

Data Path : Z:\pestpcbsrv\HPCHEM1\ECD_0\Data\P0071025\
 Data File : PO112194.D
 Signal(s) : Signal #1: ECD1A.ch Signal #2: ECD2B.ch
 Acq On : 10 Jul 2025 15:50
 Operator : YP/AJ
 Sample : Q2546-01
 Misc :
 ALS Vial : 15 Sample Multiplier: 1

Instrument :
 ECD_0
 ClientSampleId :
 HD-02-7-9-2025

Integration File signal 1: autoint1.e
 Integration File signal 2: autoint2.e
 Quant Time: Jul 10 16:06:25 2025
 Quant Method : Z:\pestpcbsrv\HPCHEM1\ECD_0\methods\P0070825.M
 Quant Title : GC EXTRACTABLES
 QLast Update : Wed Jul 09 10:50:50 2025
 Response via : Initial Calibration
 Integrator: ChemStation

Volume Inj. : 2 µl
 Signal #1 Phase : ZB-MR1 Signal #2 Phase: ZB-MR2
 Signal #1 Info : 30Mx0.32mmx 0.50µ Signal #2 Info : 30M x 0.32mm x 0.25µm

Compound	RT#1	RT#2	Resp#1	Resp#2	ng/ml	ng/ml
System Monitoring Compounds						
1) SA Tetrachlo...	3.671	3.665	209.4E6	135.9E6	21.159	21.338
2) SA Decachlor...	8.700	8.648	87291218	25085164	12.767	14.555
Target Compounds						
3) L1 AR-1016-1	4.761	4.746	1073403	11442255	3.156	51.349 #
4) L1 AR-1016-2	4.795	4.779	3522759	7360299	7.084	22.365 #
5) L1 AR-1016-3	4.843	4.936	7620520	3806055	23.541	22.406
6) L1 AR-1016-4	4.954	4.983	8169966	9649553	31.815	70.318 #
7) L1 AR-1016-5	5.223	5.204	47947390	13836537	175.207	80.235 #
8) L2 AR-1221-1	3.892	3.883	1871297	1355574	16.047	16.472
9) L2 AR-1221-2	3.979	3.967	2074869	4639463	26.317	78.167 #
10) L2 AR-1221-3	4.050	4.038	2213054	3062568	8.209	16.223 #
11) L3 AR-1232-1	4.050	4.038	2213054	3062568	10.309	20.404 #
12) L3 AR-1232-2	4.543	4.746	20151269	11442255	177.330	74.744 #
13) L3 AR-1232-3	4.795	4.936	3522759	3806055	15.383	50.407 #
14) L3 AR-1232-4	4.954	5.040	8169966	9846501	71.480	149.216 #
15) L3 AR-1232-5	5.002	5.204	24182861	13836537	329.466	186.326 #
16) L4 AR-1242-1	4.761	4.746	1073403	11442255	3.706	59.024 #
17) L4 AR-1242-2	4.795	4.746	3522759	11442255	8.271	40.382 #
18) L4 AR-1242-3	4.843	4.936	7620520	3806055	27.844	26.127
19) L4 AR-1242-4	4.954	5.040	8169966	9846501	36.260	69.419 #
20) L4 AR-1242-5	5.615	5.546	13065475	7966875	61.725	43.838 #
21) L5 AR-1248-1	4.761	4.746	1073403	11442255	4.731	74.123 #
22) L5 AR-1248-2	5.002	4.983	24182861	9649553	78.433	46.895 #
23) L5 AR-1248-3	5.223	5.040	47947390	9846501	117.714	45.841 #
24) L5 AR-1248-4	5.569	5.204	15211983	13836537	26.357	53.479 #
25) L5 AR-1248-5	5.615	5.589	13065475	7863556	33.475	31.385
26) L6 AR-1254-1	5.569	5.546	15211983	7966875	24.730	20.901
27) L6 AR-1254-2	5.705	5.681	13224622	7246137	24.687	21.838
28) L6 AR-1254-3	6.110	6.083	12869387	9392707	15.328	19.485 #
29) L6 AR-1254-4	6.343	6.310	5719972	4322035	11.891	16.579 #
30) L6 AR-1254-5	6.763	6.730	19051394	12197371	24.616	34.228 #
31) L7 AR-1260-1	6.252	6.221	7273451	7290811	14.511	25.986 #
32) L7 AR-1260-2	6.434	6.407	4757840	1697011	6.446	4.991
33) L7 AR-1260-3	6.803	6.586	1135539	3851206	1.732	13.975 #
34) L7 AR-1260-4	7.066	7.059	5072411	778095	11.654	3.878 #
35) L7 AR-1260-5	7.309	7.269	3332299	1576788	2.639	3.522 #
36) L8 AR-1262-1	6.803	6.764	1135539	357702	1.111	0.878
37) L8 AR-1262-2	7.309	7.269	3332299	1576788	2.033	3.076 #
38) L8 AR-1262-3	7.593	7.571	1037577	357126	1.616	1.989
39) L8 AR-1262-4	7.633	7.616	17429835	1888016	16.268	6.490 #
40) L8 AR-1262-5	8.152	8.108	224477	1950	0.501	0.018 #
41) L9 AR-1268-1	7.593	7.571	1037577	357126	0.565	0.727 #

Data Path : Z:\pestpcbsrv\HPCHEM1\ECD_0\Data\P0071025\
 Data File : P0112194.D
 Signal(s) : Signal #1: ECD1A.ch Signal #2: ECD2B.ch
 Acq On : 10 Jul 2025 15:50
 Operator : YP/AJ
 Sample : Q2546-01
 Misc :
 ALS Vial : 15 Sample Multiplier: 1

Instrument :
 ECD_0
ClientSampleId :
 HD-02-7-9-2025

Integration File signal 1: autoint1.e
 Integration File signal 2: autoint2.e
 Quant Time: Jul 10 16:06:25 2025
 Quant Method : Z:\pestpcbsrv\HPCHEM1\ECD_0\methods\P0070825.M
 Quant Title : GC EXTRACTABLES
 QLast Update : Wed Jul 09 10:50:50 2025
 Response via : Initial Calibration
 Integrator: ChemStation

Volume Inj. : 2 µl
 Signal #1 Phase : ZB-MR1 Signal #2 Phase: ZB-MR2
 Signal #1 Info : 30Mx0.32mmx 0.50µ Signal #2 Info : 30M x 0.32mm x 0.25µm

	Compound	RT#1	RT#2	Resp#1	Resp#2	ng/ml	ng/ml
42)	L9 AR-1268-2	7.633	7.616	17429835	1888016	11.190	4.526 #
43)	L9 AR-1268-3	7.865	7.822	1931860	438631	1.486	1.386
44)	L9 AR-1268-4	8.152	8.108	224477	1950	0.467	0.017 #

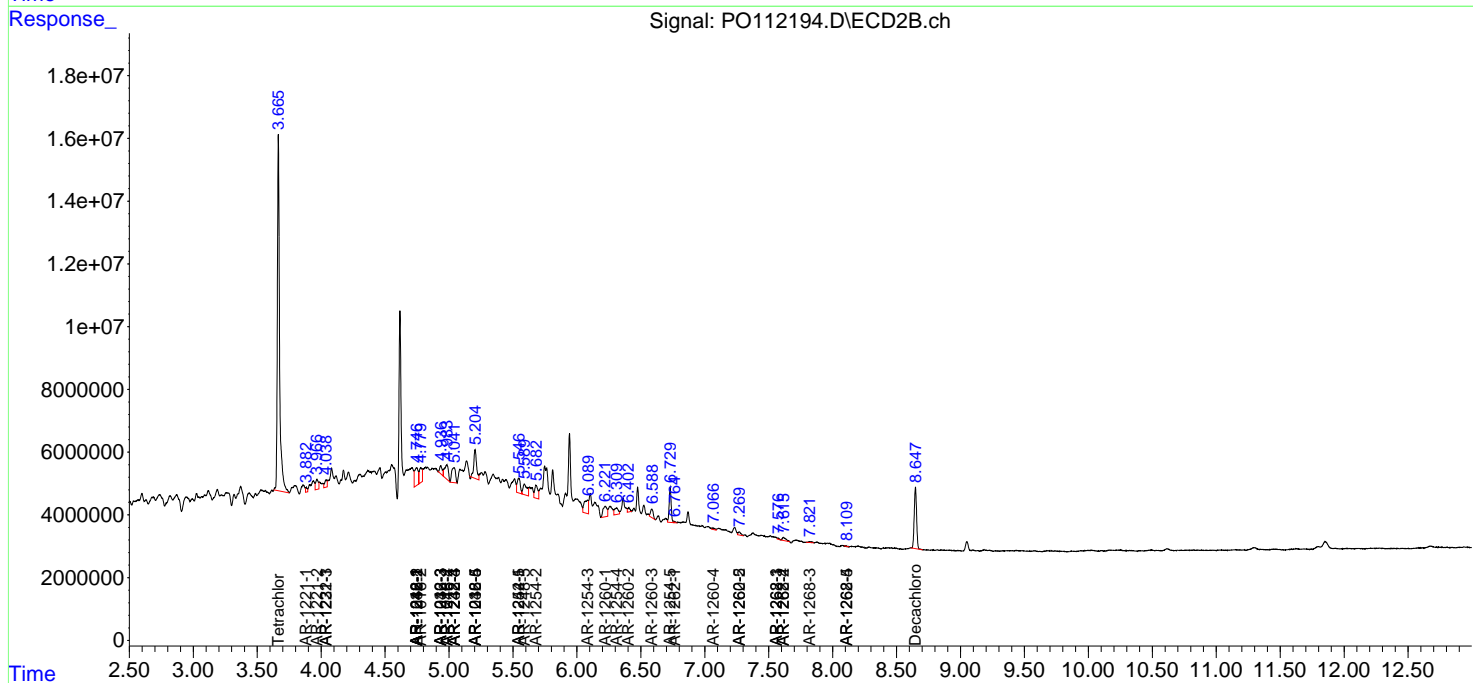
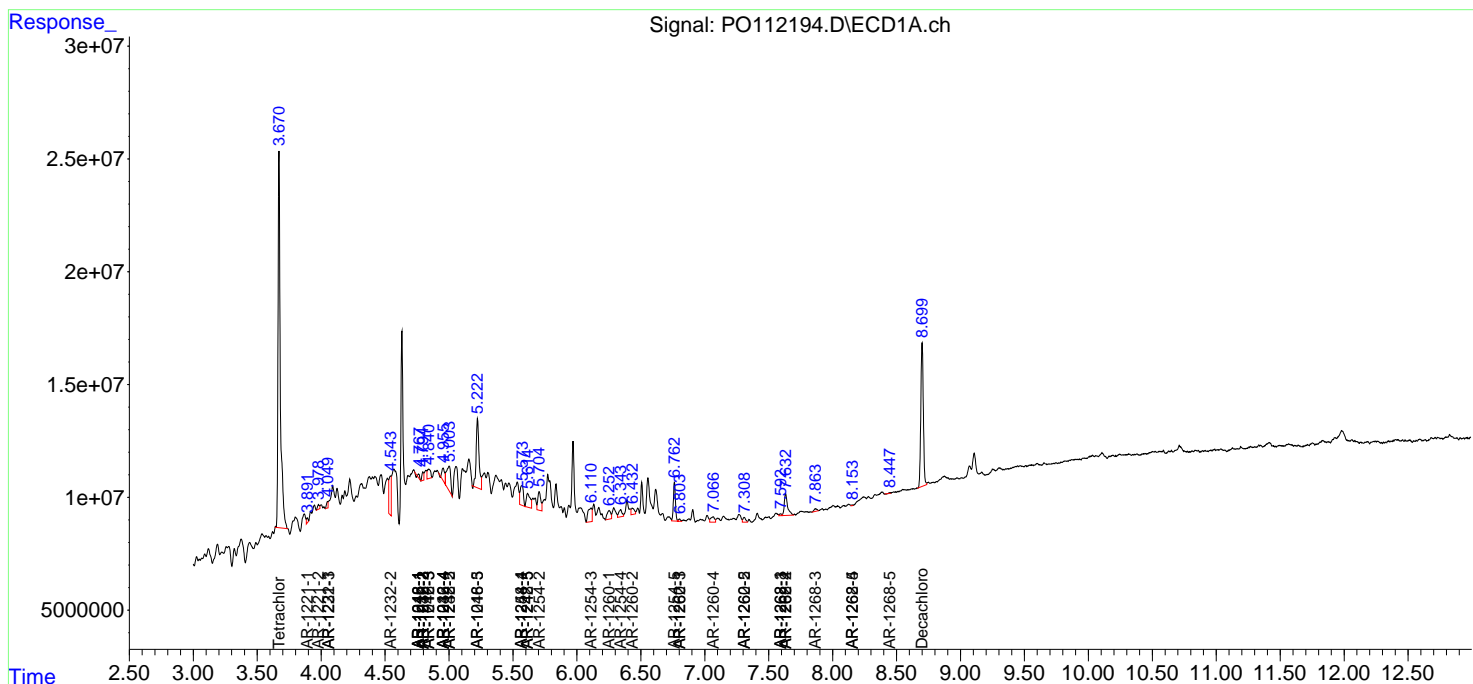
(f)=RT Delta > 1/2 Window (#)=Amounts differ by > 25% (m)=manual int.

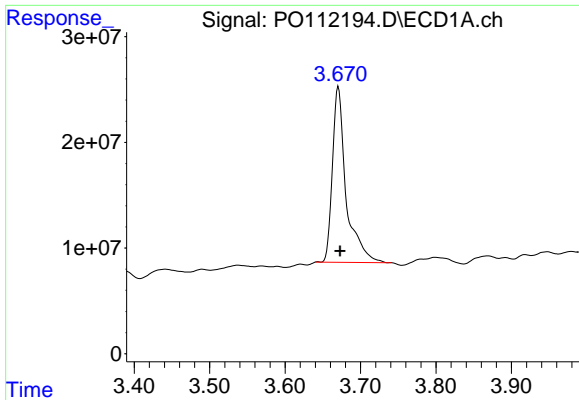
Data Path : Z:\pestpcbsrv\HPCHEM1\ECD_O\Data\P0071025\
 Data File : P0112194.D
 Signal(s) : Signal #1: ECD1A.ch Signal #2: ECD2B.ch
 Acq On : 10 Jul 2025 15:50
 Operator : YP/AJ
 Sample : Q2546-01
 Misc :
 ALS Vial : 15 Sample Multiplier: 1

Instrument :
 ECD_O
 ClientSampleId :
 HD-02-7-9-2025

Integration File signal 1: autoint1.e
 Integration File signal 2: autoint2.e
 Quant Time: Jul 10 16:06:25 2025
 Quant Method : Z:\pestpcbsrv\HPCHEM1\ECD_O\methods\P0070825.M
 Quant Title : GC EXTRACTABLES
 QLast Update : Wed Jul 09 10:50:50 2025
 Response via : Initial Calibration
 Integrator: ChemStation

Volume Inj. : 2 µl
 Signal #1 Phase : ZB-MR1 Signal #2 Phase: ZB-MR2
 Signal #1 Info : 30Mx0.32mmx 0.50µ Signal #2 Info : 30M x 0.32mm x 0.25µm

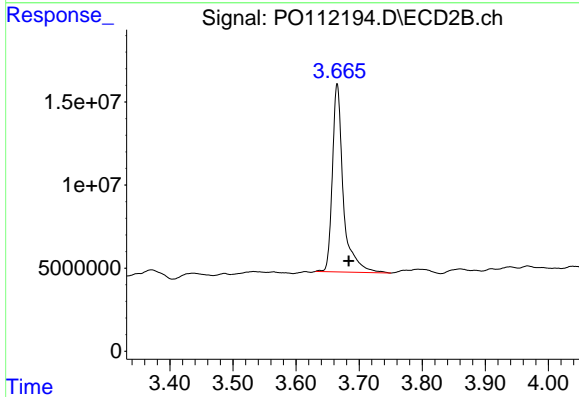




#1 Tetrachloro-m-xylene

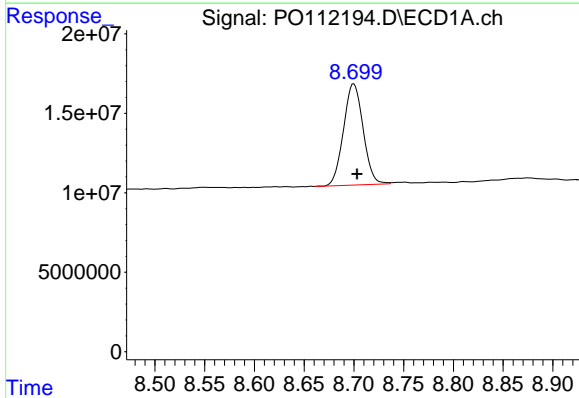
R.T.: 3.671 min
 Delta R.T.: -0.002 min
 Response: 209358456
 Conc: 21.16 ng/ml

Instrument :
 ECD_O
 ClientSampleId :
 HD-02-7-9-2025



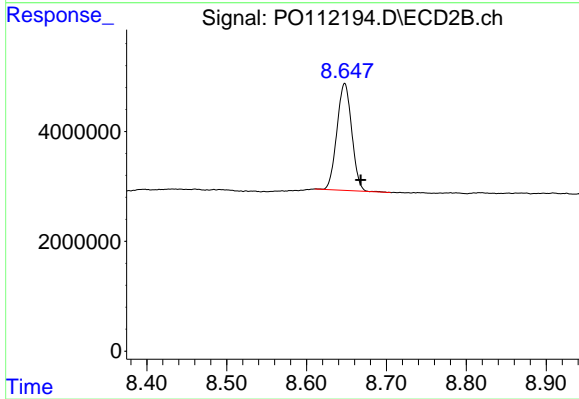
#1 Tetrachloro-m-xylene

R.T.: 3.665 min
 Delta R.T.: -0.018 min
 Response: 135945947
 Conc: 21.34 ng/ml



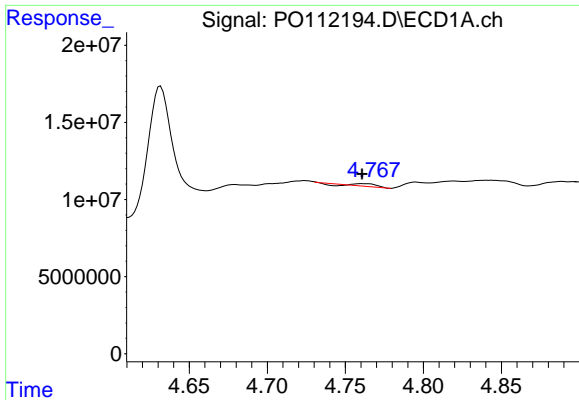
#2 Decachlorobiphenyl

R.T.: 8.700 min
 Delta R.T.: -0.003 min
 Response: 87291218
 Conc: 12.77 ng/ml



#2 Decachlorobiphenyl

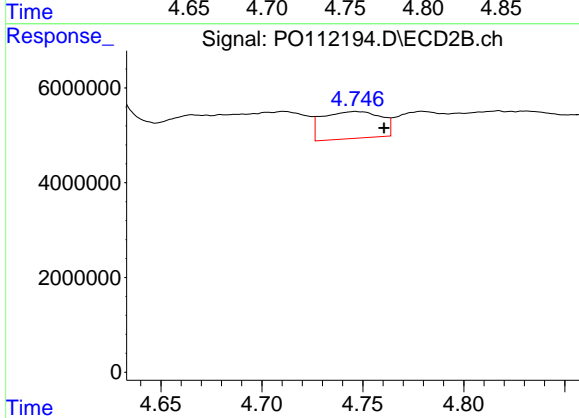
R.T.: 8.648 min
 Delta R.T.: -0.020 min
 Response: 25085164
 Conc: 14.56 ng/ml



#3 AR-1016-1

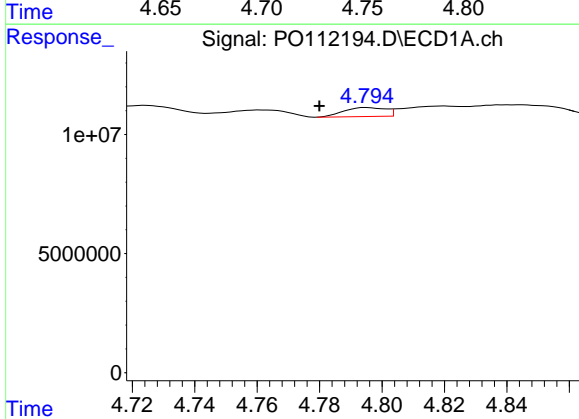
R.T.: 4.761 min
 Delta R.T.: 0.000 min
 Response: 1073403
 Conc: 3.16 ng/ml

Instrument :
 ECD_O
 ClientSampleId :
 HD-02-7-9-2025



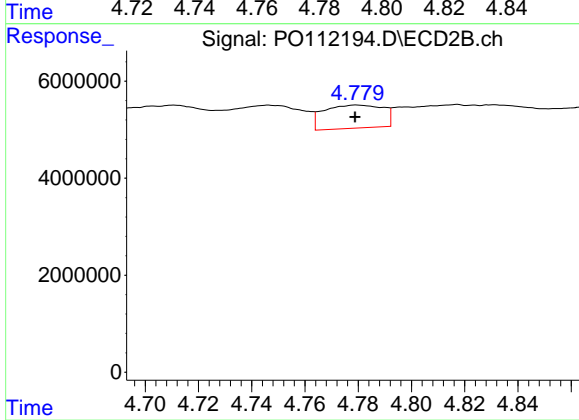
#3 AR-1016-1

R.T.: 4.746 min
 Delta R.T.: -0.014 min
 Response: 11442255
 Conc: 51.35 ng/ml



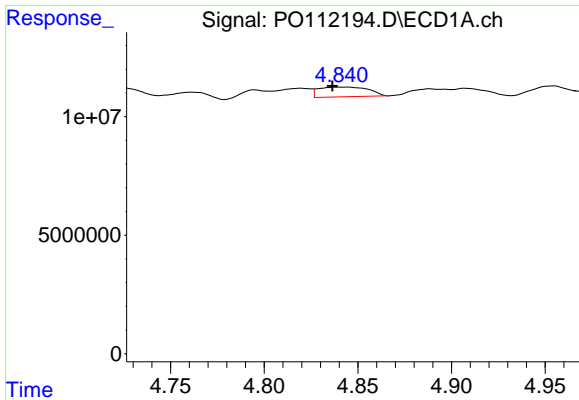
#4 AR-1016-2

R.T.: 4.795 min
 Delta R.T.: 0.015 min
 Response: 3522759
 Conc: 7.08 ng/ml



#4 AR-1016-2

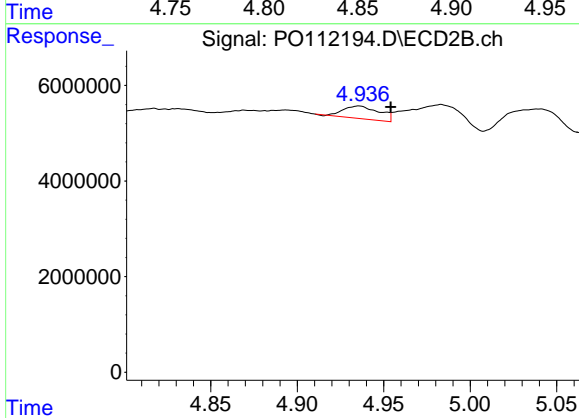
R.T.: 4.779 min
 Delta R.T.: 0.000 min
 Response: 7360299
 Conc: 22.37 ng/ml



#5 AR-1016-3

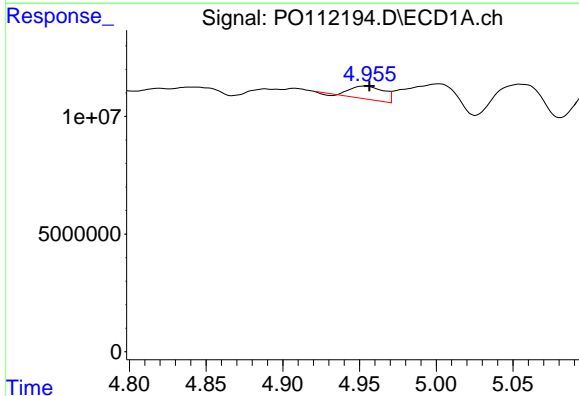
R.T.: 4.843 min
 Delta R.T.: 0.007 min
 Response: 7620520
 Conc: 23.54 ng/ml

Instrument :
 ECD_O
 ClientSampleId :
 HD-02-7-9-2025



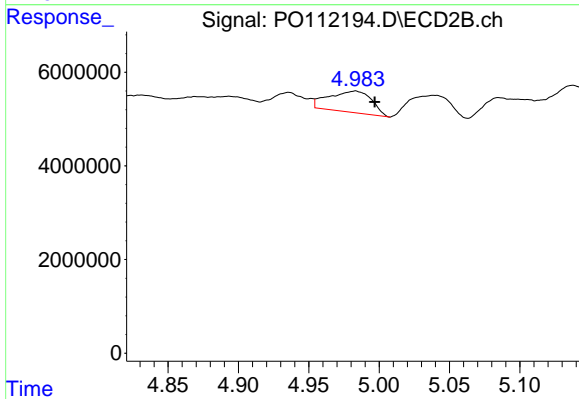
#5 AR-1016-3

R.T.: 4.936 min
 Delta R.T.: -0.018 min
 Response: 3806055
 Conc: 22.41 ng/ml



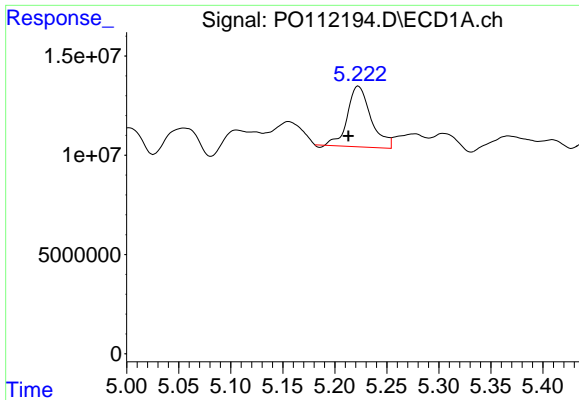
#6 AR-1016-4

R.T.: 4.954 min
 Delta R.T.: -0.002 min
 Response: 8169966
 Conc: 31.81 ng/ml



#6 AR-1016-4

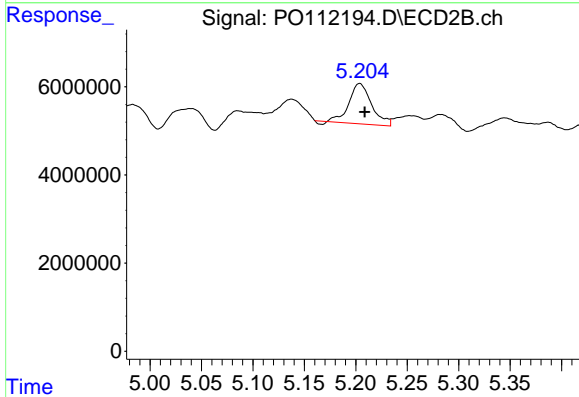
R.T.: 4.983 min
 Delta R.T.: -0.014 min
 Response: 9649553
 Conc: 70.32 ng/ml



#7 AR-1016-5

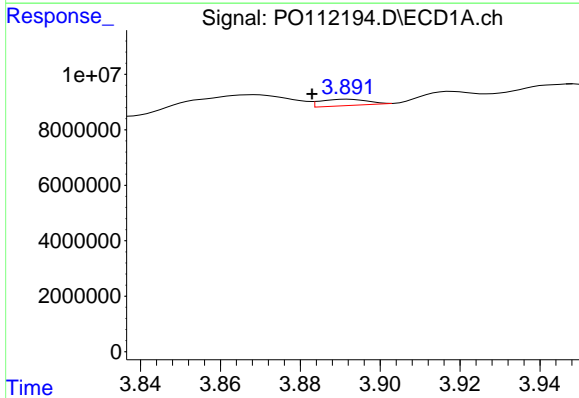
R.T.: 5.223 min
 Delta R.T.: 0.010 min
 Response: 47947390
 Conc: 175.21 ng/ml

Instrument :
 ECD_O
 ClientSampleId :
 HD-02-7-9-2025



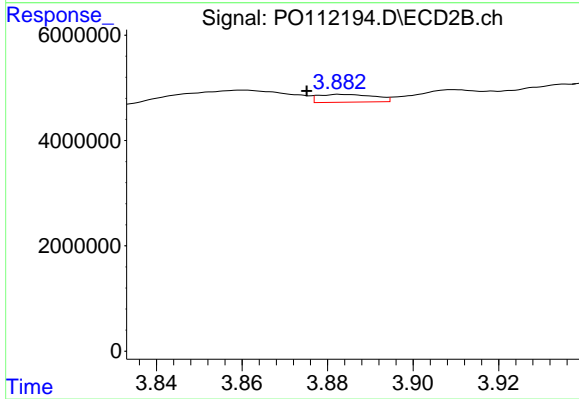
#7 AR-1016-5

R.T.: 5.204 min
 Delta R.T.: -0.005 min
 Response: 13836537
 Conc: 80.23 ng/ml



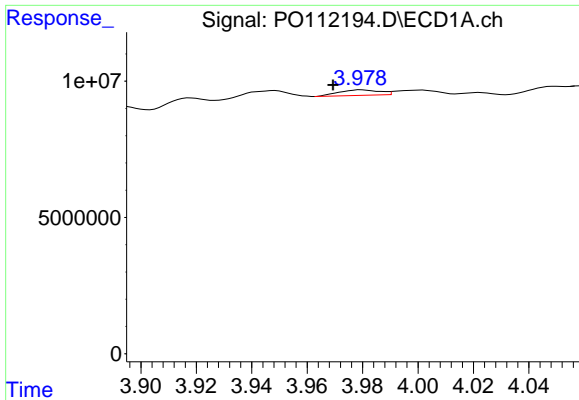
#8 AR-1221-1

R.T.: 3.892 min
 Delta R.T.: 0.009 min
 Response: 1871297
 Conc: 16.05 ng/ml



#8 AR-1221-1

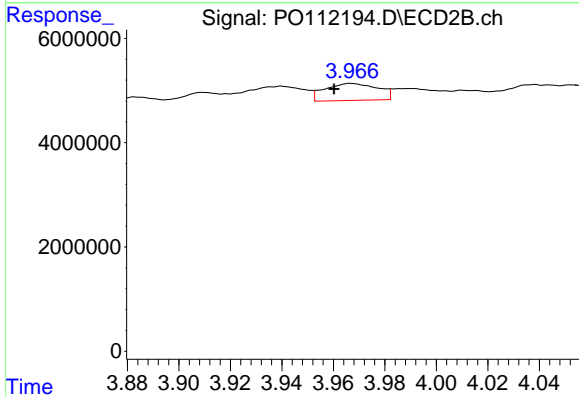
R.T.: 3.883 min
 Delta R.T.: 0.008 min
 Response: 1355574
 Conc: 16.47 ng/ml



#9 AR-1221-2

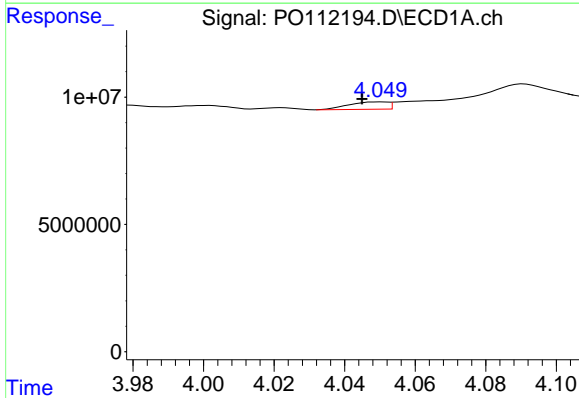
R.T.: 3.979 min
 Delta R.T.: 0.010 min
 Response: 2074869
 Conc: 26.32 ng/ml

Instrument :
 ECD_O
 ClientSampleId :
 HD-02-7-9-2025



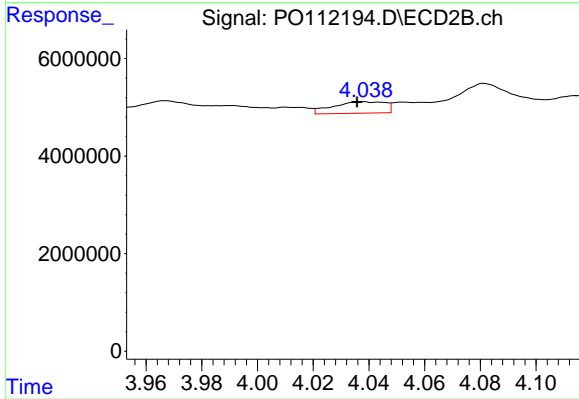
#9 AR-1221-2

R.T.: 3.967 min
 Delta R.T.: 0.007 min
 Response: 4639463
 Conc: 78.17 ng/ml



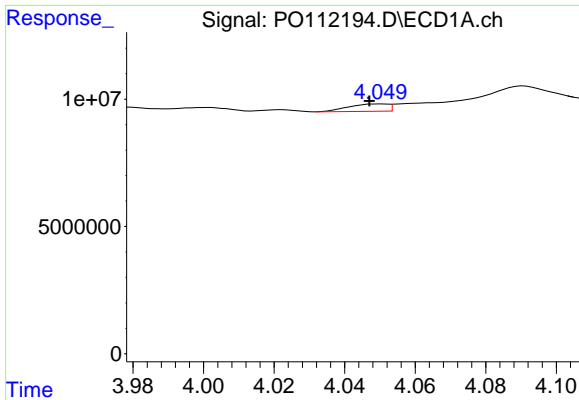
#10 AR-1221-3

R.T.: 4.050 min
 Delta R.T.: 0.005 min
 Response: 2213054
 Conc: 8.21 ng/ml



#10 AR-1221-3

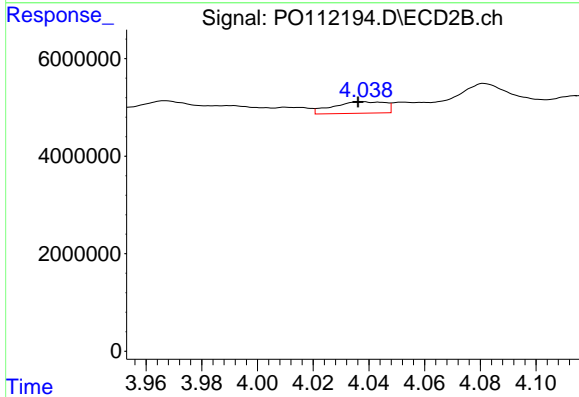
R.T.: 4.038 min
 Delta R.T.: 0.002 min
 Response: 3062568
 Conc: 16.22 ng/ml



#11 AR-1232-1

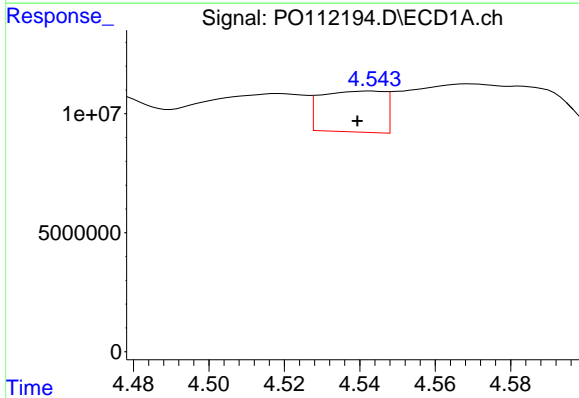
R.T.: 4.050 min
 Delta R.T.: 0.003 min
 Response: 2213054
 Conc: 10.31 ng/ml

Instrument :
 ECD_O
 ClientSampleId :
 HD-02-7-9-2025



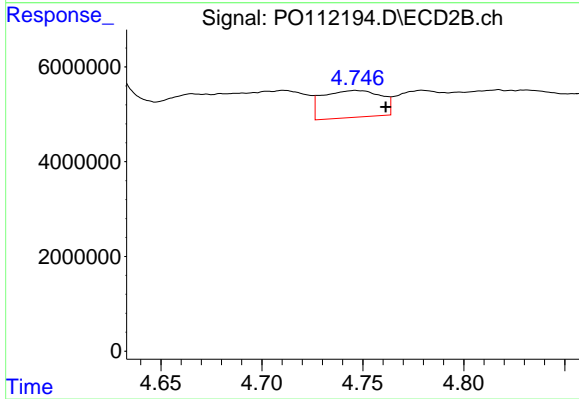
#11 AR-1232-1

R.T.: 4.038 min
 Delta R.T.: 0.002 min
 Response: 3062568
 Conc: 20.40 ng/ml



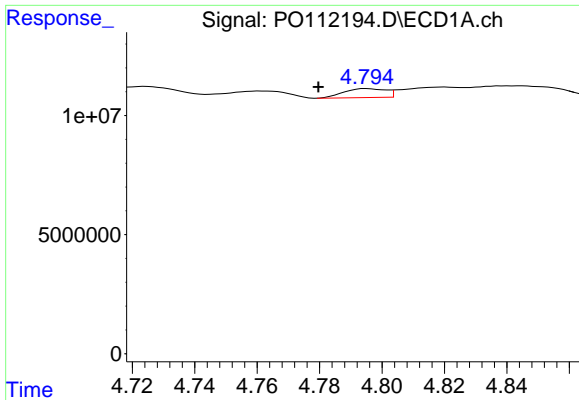
#12 AR-1232-2

R.T.: 4.543 min
 Delta R.T.: 0.003 min
 Response: 20151269
 Conc: 177.33 ng/ml



#12 AR-1232-2

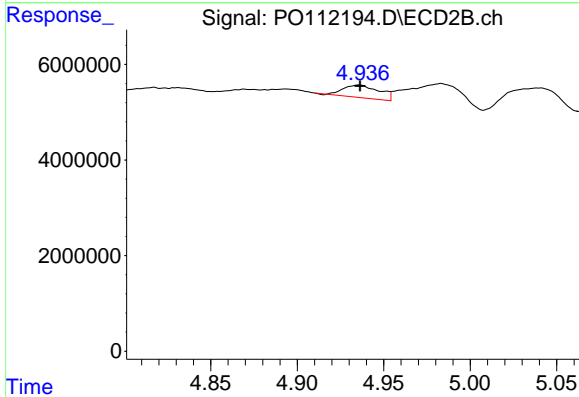
R.T.: 4.746 min
 Delta R.T.: -0.015 min
 Response: 11442255
 Conc: 74.74 ng/ml



#13 AR-1232-3

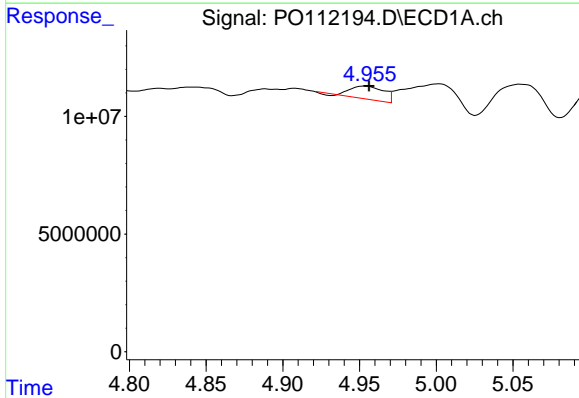
R.T.: 4.795 min
 Delta R.T.: 0.016 min
 Response: 3522759
 Conc: 15.38 ng/ml

Instrument :
 ECD_O
 ClientSampleId :
 HD-02-7-9-2025



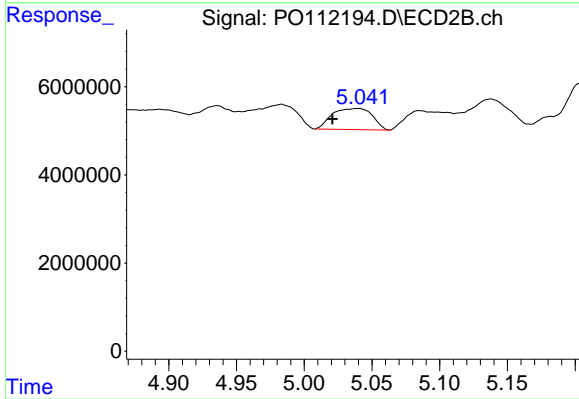
#13 AR-1232-3

R.T.: 4.936 min
 Delta R.T.: 0.000 min
 Response: 3806055
 Conc: 50.41 ng/ml



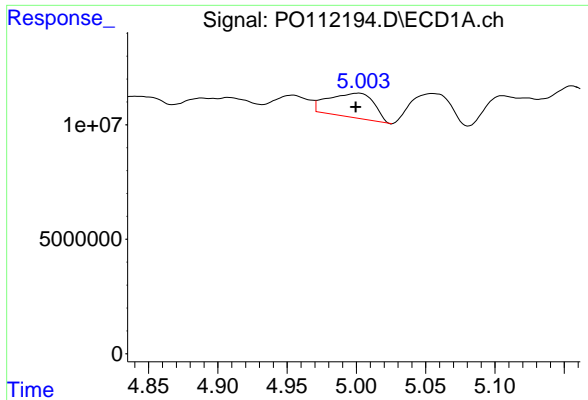
#14 AR-1232-4

R.T.: 4.954 min
 Delta R.T.: -0.002 min
 Response: 8169966
 Conc: 71.48 ng/ml



#14 AR-1232-4

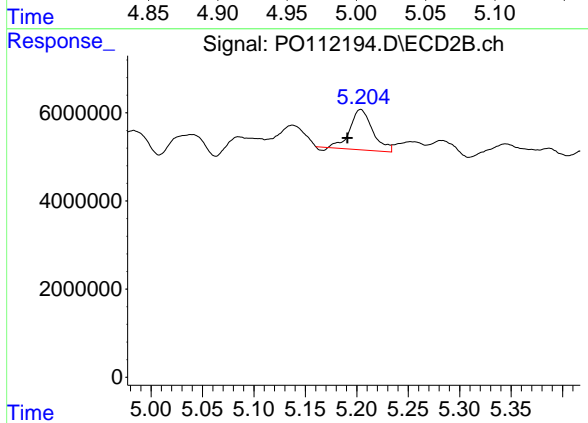
R.T.: 5.040 min
 Delta R.T.: 0.019 min
 Response: 9846501
 Conc: 149.22 ng/ml



#15 AR-1232-5

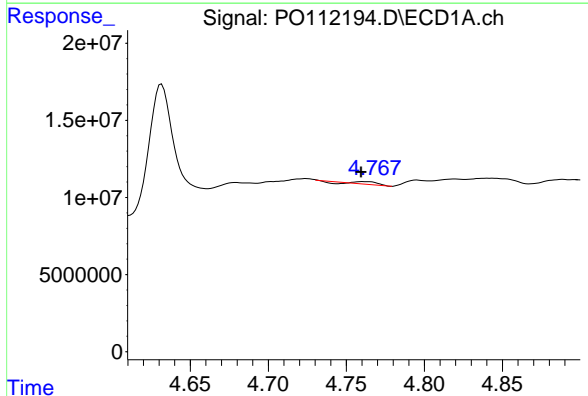
R.T.: 5.002 min
 Delta R.T.: 0.002 min
 Response: 24182861
 Conc: 329.47 ng/ml

Instrument :
 ECD_O
 ClientSampleId :
 HD-02-7-9-2025



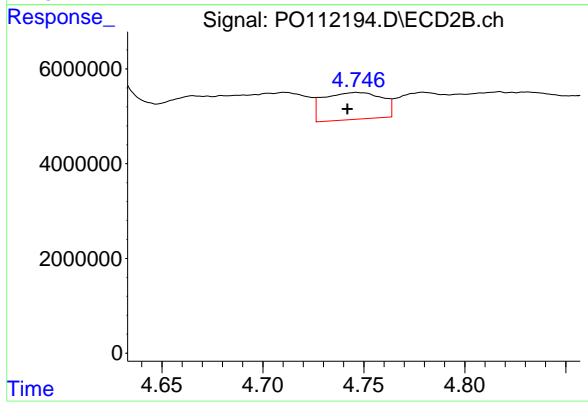
#15 AR-1232-5

R.T.: 5.204 min
 Delta R.T.: 0.013 min
 Response: 13836537
 Conc: 186.33 ng/ml



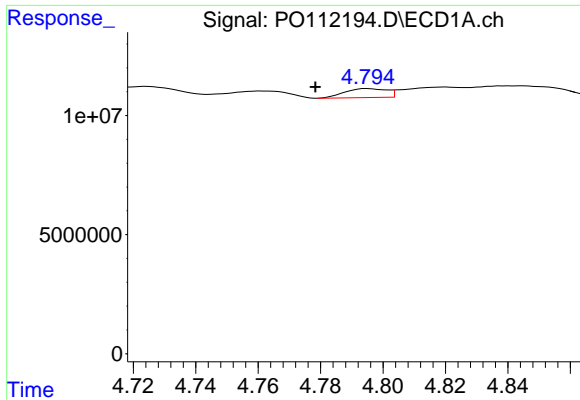
#16 AR-1242-1

R.T.: 4.761 min
 Delta R.T.: 0.002 min
 Response: 1073403
 Conc: 3.71 ng/ml



#16 AR-1242-1

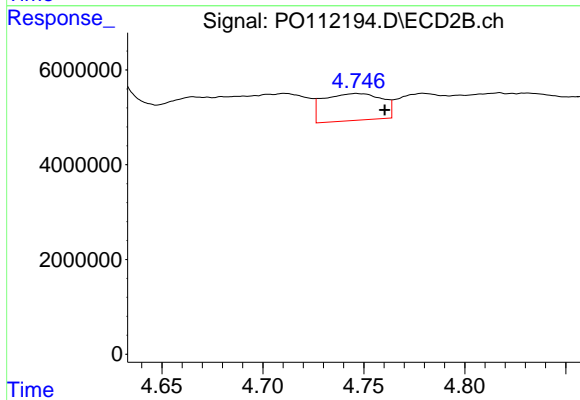
R.T.: 4.746 min
 Delta R.T.: 0.004 min
 Response: 11442255
 Conc: 59.02 ng/ml



#17 AR-1242-2

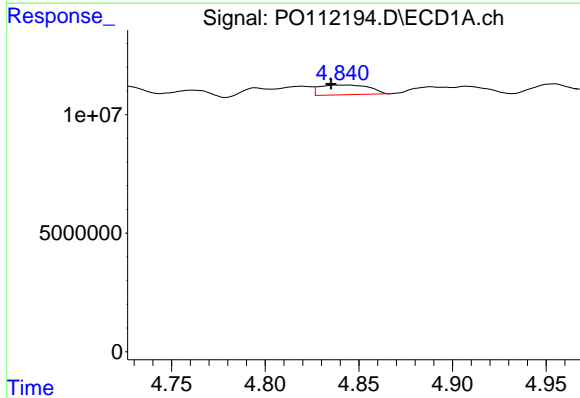
R.T.: 4.795 min
 Delta R.T.: 0.017 min
 Response: 3522759
 Conc: 8.27 ng/ml

Instrument :
 ECD_O
 ClientSampleId :
 HD-02-7-9-2025



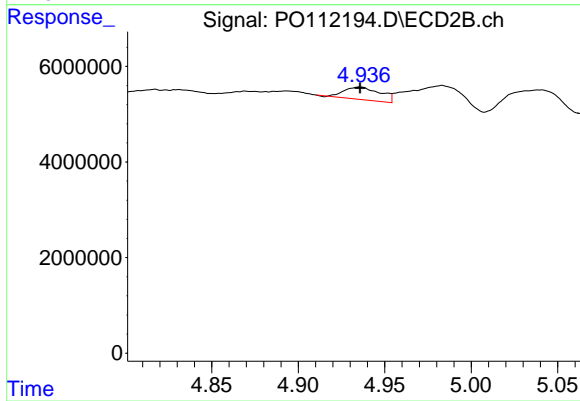
#17 AR-1242-2

R.T.: 4.746 min
 Delta R.T.: -0.014 min
 Response: 11442255
 Conc: 40.38 ng/ml



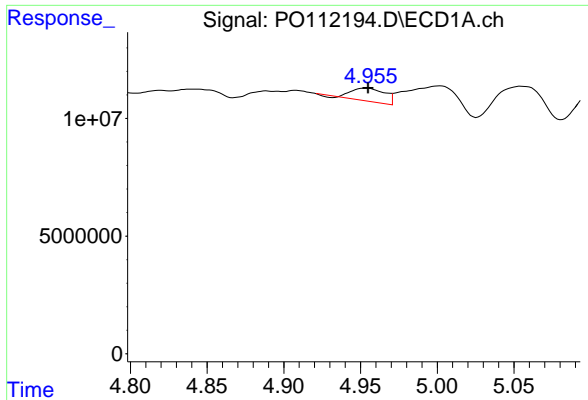
#18 AR-1242-3

R.T.: 4.843 min
 Delta R.T.: 0.008 min
 Response: 7620520
 Conc: 27.84 ng/ml



#18 AR-1242-3

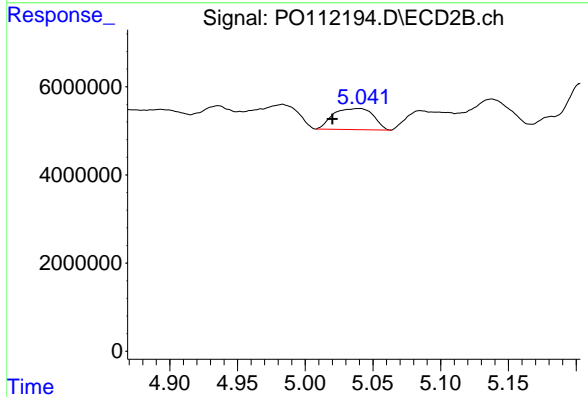
R.T.: 4.936 min
 Delta R.T.: 0.000 min
 Response: 3806055
 Conc: 26.13 ng/ml



#19 AR-1242-4

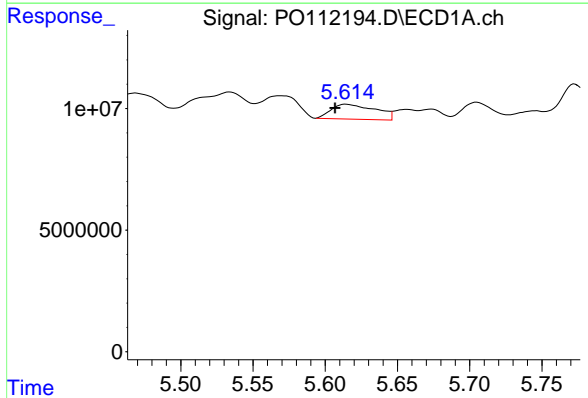
R.T.: 4.954 min
 Delta R.T.: 0.000 min
 Response: 8169966
 Conc: 36.26 ng/ml

Instrument :
 ECD_O
 ClientSampleId :
 HD-02-7-9-2025



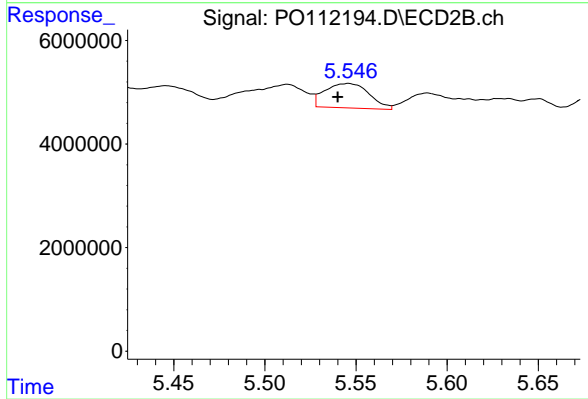
#19 AR-1242-4

R.T.: 5.040 min
 Delta R.T.: 0.020 min
 Response: 9846501
 Conc: 69.42 ng/ml



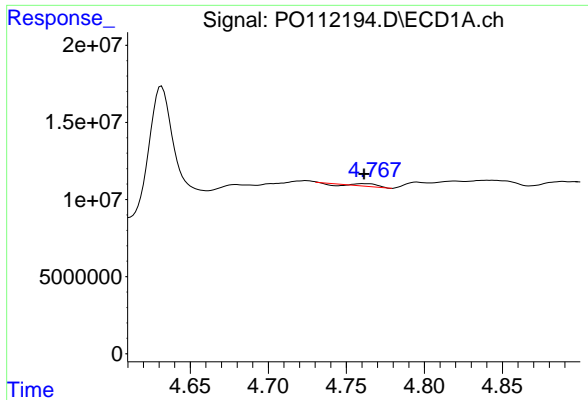
#20 AR-1242-5

R.T.: 5.615 min
 Delta R.T.: 0.008 min
 Response: 13065475
 Conc: 61.73 ng/ml



#20 AR-1242-5

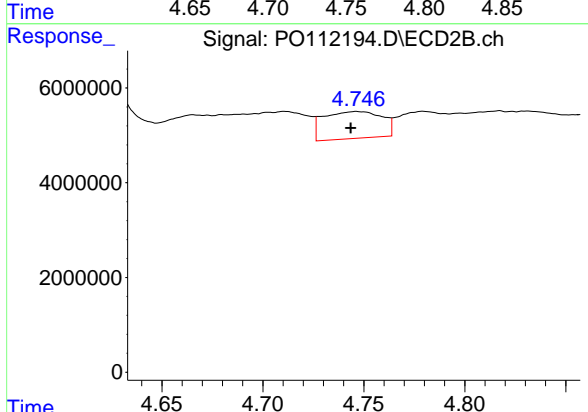
R.T.: 5.546 min
 Delta R.T.: 0.006 min
 Response: 7966875
 Conc: 43.84 ng/ml



#21 AR-1248-1

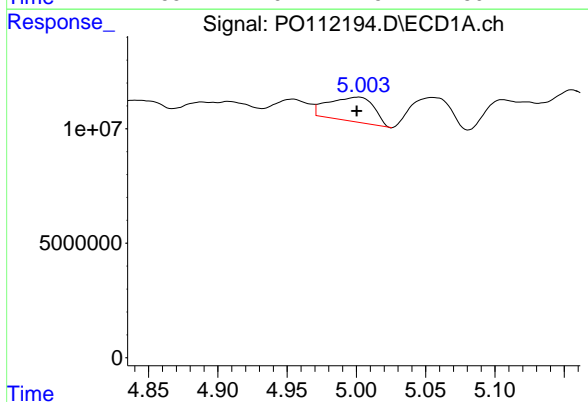
R.T.: 4.761 min
 Delta R.T.: 0.000 min
 Response: 1073403
 Conc: 4.73 ng/ml

Instrument :
 ECD_O
 ClientSampleId :
 HD-02-7-9-2025



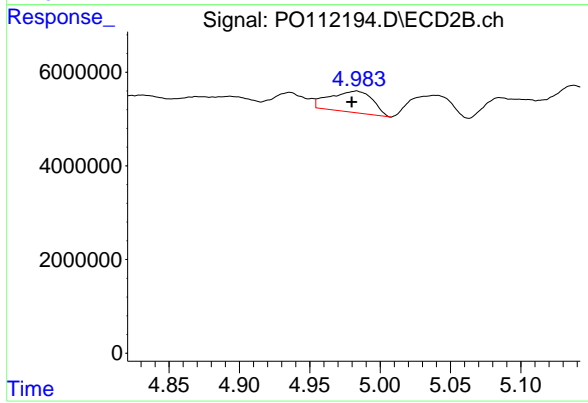
#21 AR-1248-1

R.T.: 4.746 min
 Delta R.T.: 0.003 min
 Response: 11442255
 Conc: 74.12 ng/ml



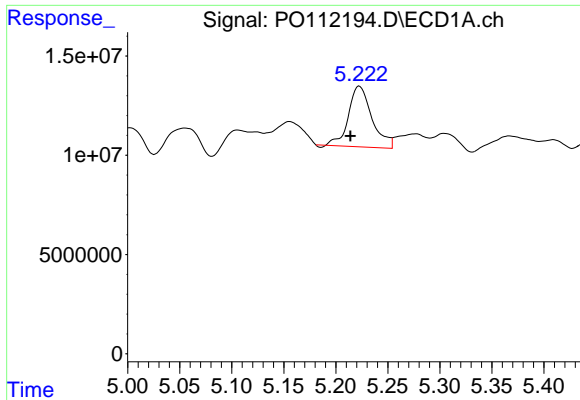
#22 AR-1248-2

R.T.: 5.002 min
 Delta R.T.: 0.002 min
 Response: 24182861
 Conc: 78.43 ng/ml



#22 AR-1248-2

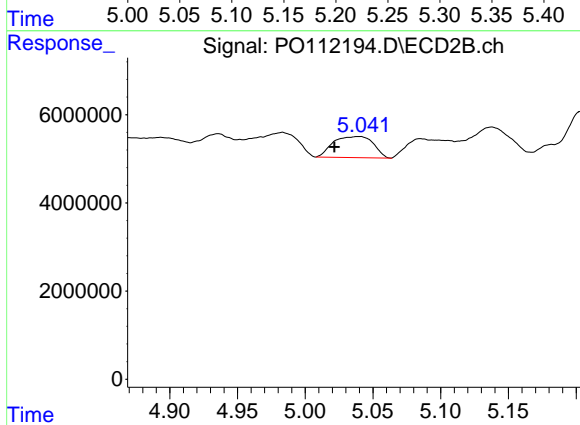
R.T.: 4.983 min
 Delta R.T.: 0.003 min
 Response: 9649553
 Conc: 46.90 ng/ml



#23 AR-1248-3

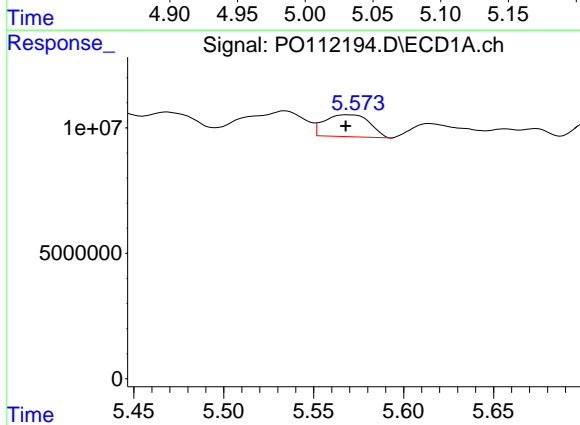
R.T.: 5.223 min
 Delta R.T.: 0.009 min
 Response: 47947390
 Conc: 117.71 ng/ml

Instrument :
 ECD_O
 ClientSampleId :
 HD-02-7-9-2025



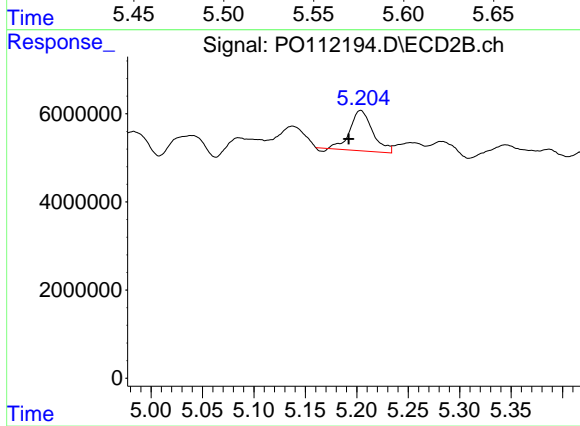
#23 AR-1248-3

R.T.: 5.040 min
 Delta R.T.: 0.018 min
 Response: 9846501
 Conc: 45.84 ng/ml



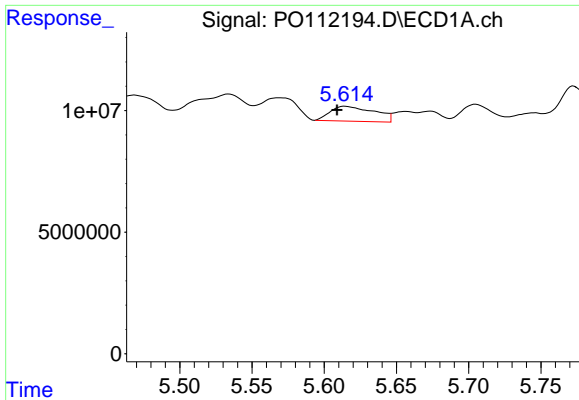
#24 AR-1248-4

R.T.: 5.569 min
 Delta R.T.: 0.002 min
 Response: 15211983
 Conc: 26.36 ng/ml



#24 AR-1248-4

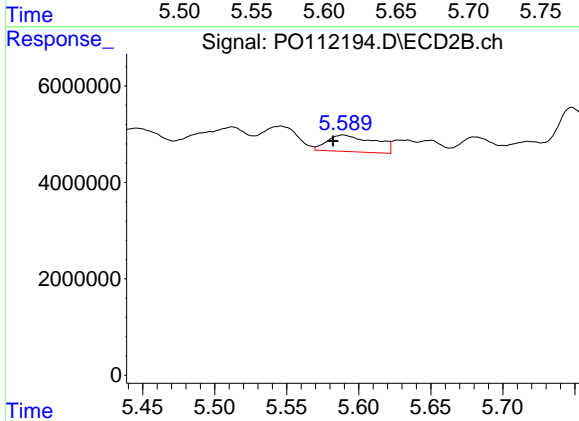
R.T.: 5.204 min
 Delta R.T.: 0.012 min
 Response: 13836537
 Conc: 53.48 ng/ml



#25 AR-1248-5

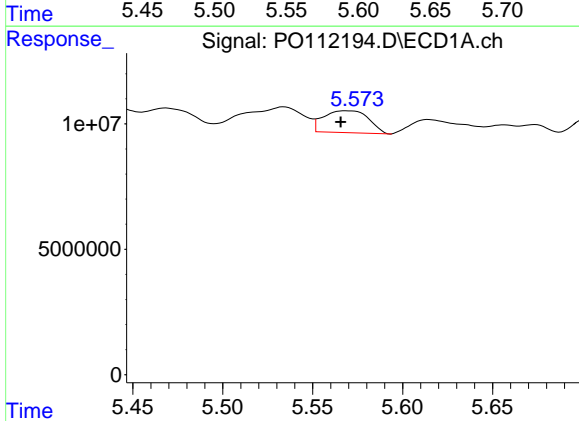
R.T.: 5.615 min
 Delta R.T.: 0.006 min
 Response: 13065475
 Conc: 33.48 ng/ml

Instrument :
 ECD_O
 ClientSampleId :
 HD-02-7-9-2025



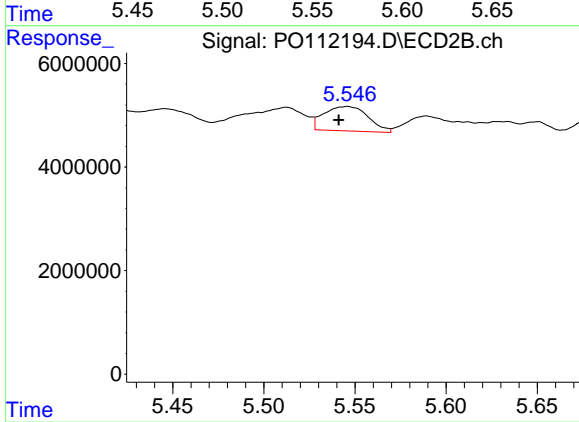
#25 AR-1248-5

R.T.: 5.589 min
 Delta R.T.: 0.007 min
 Response: 7863556
 Conc: 31.39 ng/ml



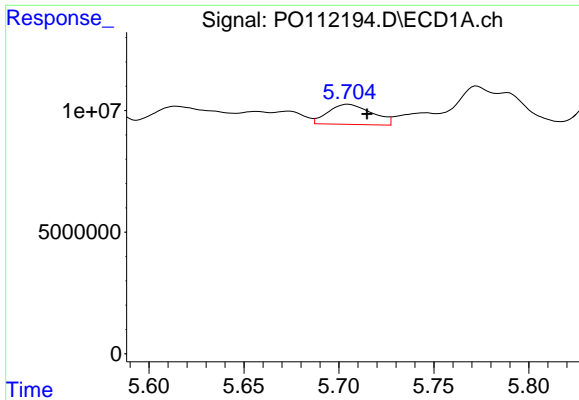
#26 AR-1254-1

R.T.: 5.569 min
 Delta R.T.: 0.004 min
 Response: 15211983
 Conc: 24.73 ng/ml



#26 AR-1254-1

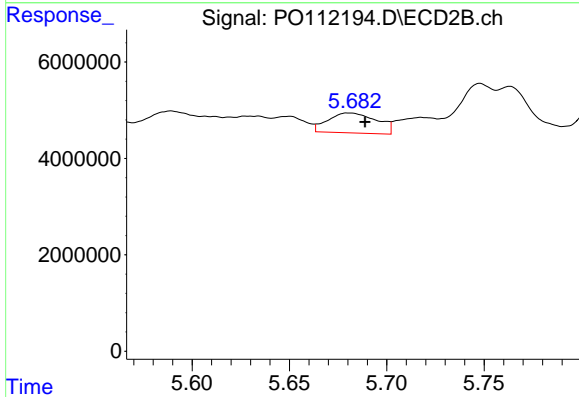
R.T.: 5.546 min
 Delta R.T.: 0.005 min
 Response: 7966875
 Conc: 20.90 ng/ml



#27 AR-1254-2

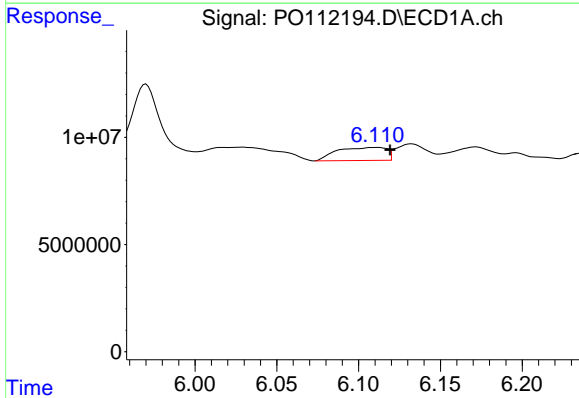
R.T.: 5.705 min
 Delta R.T.: -0.010 min
 Response: 13224622
 Conc: 24.69 ng/ml

Instrument :
 ECD_O
 ClientSampleId :
 HD-02-7-9-2025



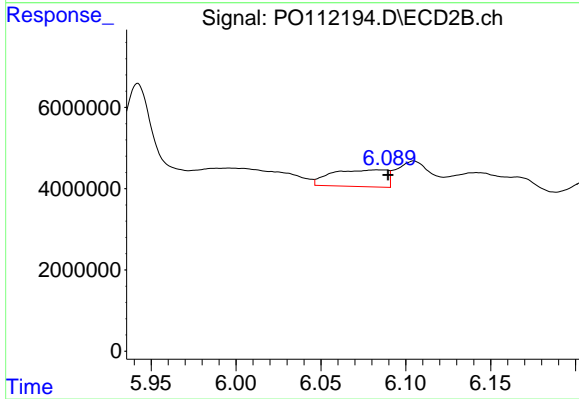
#27 AR-1254-2

R.T.: 5.681 min
 Delta R.T.: -0.008 min
 Response: 7246137
 Conc: 21.84 ng/ml



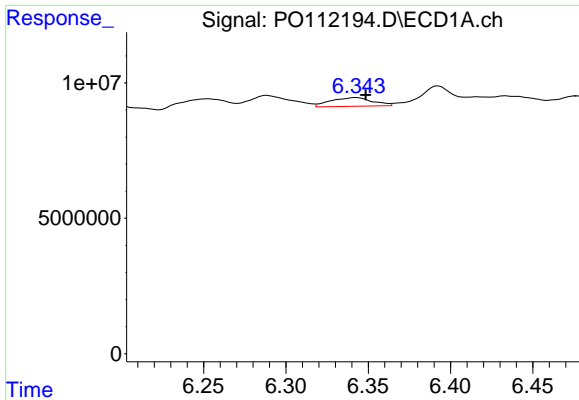
#28 AR-1254-3

R.T.: 6.110 min
 Delta R.T.: -0.009 min
 Response: 12869387
 Conc: 15.33 ng/ml



#28 AR-1254-3

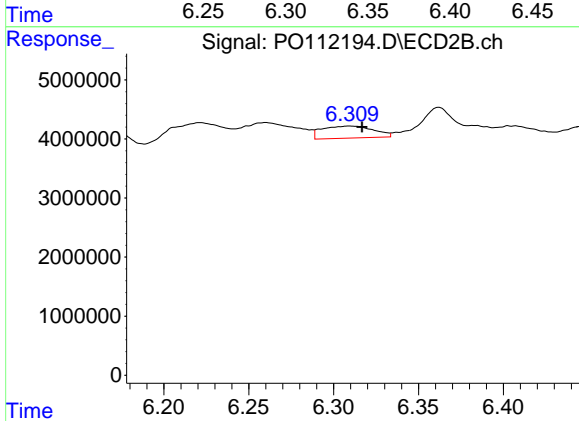
R.T.: 6.083 min
 Delta R.T.: -0.006 min
 Response: 9392707
 Conc: 19.49 ng/ml



#29 AR-1254-4

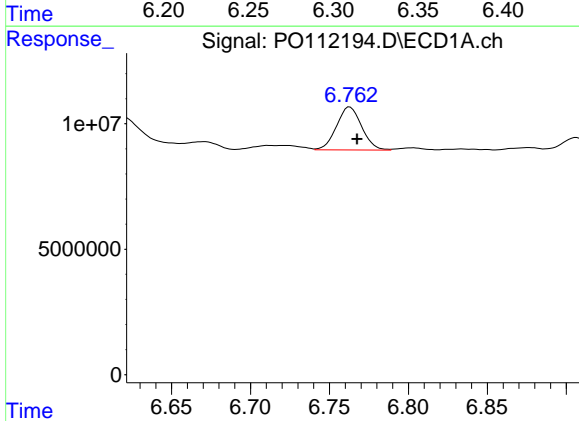
R.T.: 6.343 min
 Delta R.T.: -0.006 min
 Response: 5719972
 Conc: 11.89 ng/ml

Instrument :
 ECD_O
 ClientSampleId :
 HD-02-7-9-2025



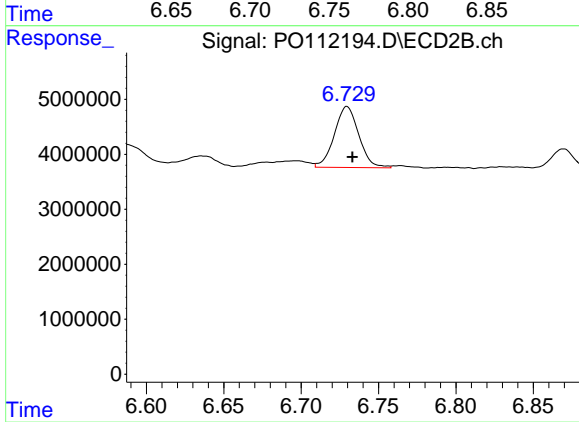
#29 AR-1254-4

R.T.: 6.310 min
 Delta R.T.: -0.007 min
 Response: 4322035
 Conc: 16.58 ng/ml



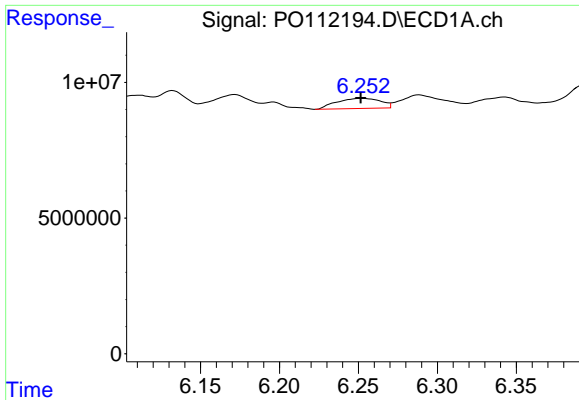
#30 AR-1254-5

R.T.: 6.763 min
 Delta R.T.: -0.005 min
 Response: 19051394
 Conc: 24.62 ng/ml



#30 AR-1254-5

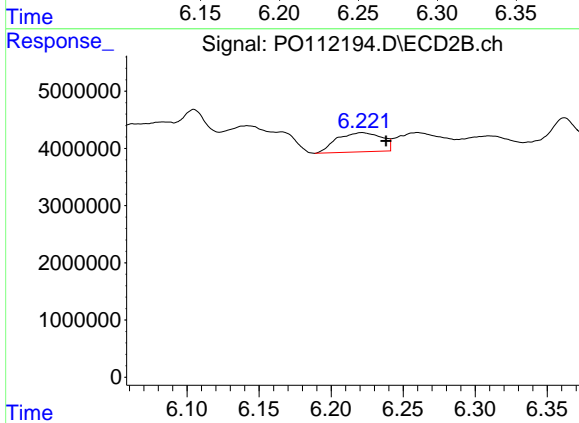
R.T.: 6.730 min
 Delta R.T.: -0.004 min
 Response: 12197371
 Conc: 34.23 ng/ml



#31 AR-1260-1

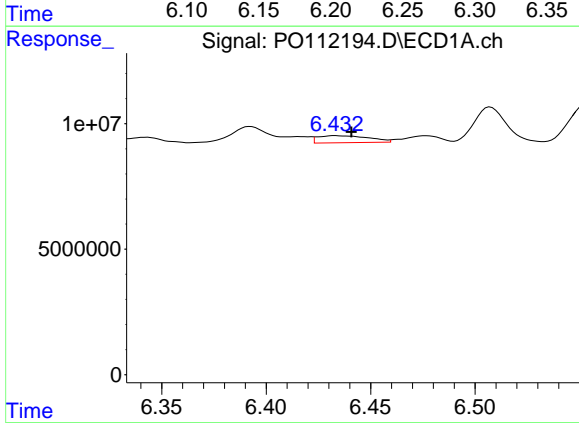
R.T.: 6.252 min
 Delta R.T.: 0.000 min
 Response: 7273451
 Conc: 14.51 ng/ml

Instrument :
 ECD_O
 ClientSampleId :
 HD-02-7-9-2025



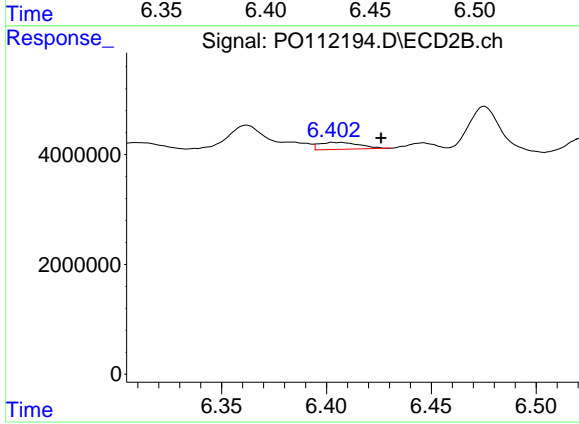
#31 AR-1260-1

R.T.: 6.221 min
 Delta R.T.: -0.017 min
 Response: 7290811
 Conc: 25.99 ng/ml



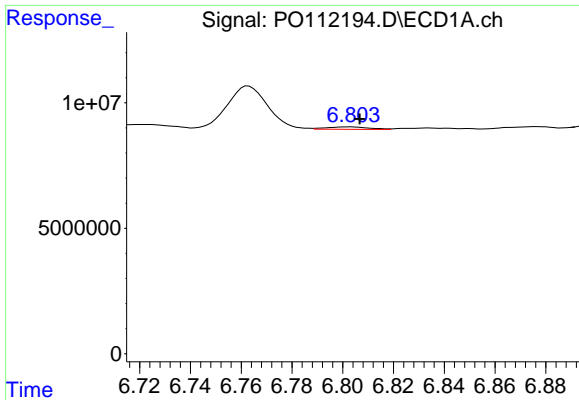
#32 AR-1260-2

R.T.: 6.434 min
 Delta R.T.: -0.007 min
 Response: 4757840
 Conc: 6.45 ng/ml



#32 AR-1260-2

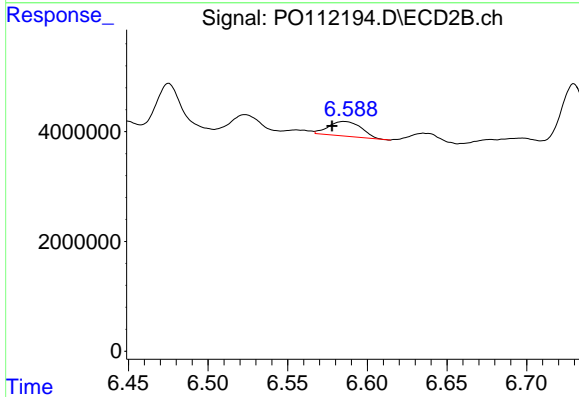
R.T.: 6.407 min
 Delta R.T.: -0.019 min
 Response: 1697011
 Conc: 4.99 ng/ml



#33 AR-1260-3

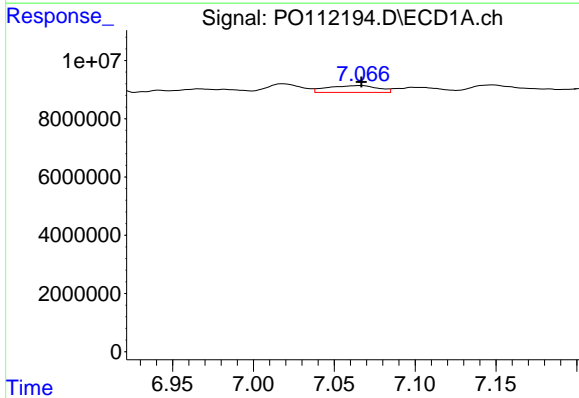
R.T.: 6.803 min
 Delta R.T.: -0.004 min
 Response: 1135539
 Conc: 1.73 ng/ml

Instrument :
 ECD_O
 ClientSampleId :
 HD-02-7-9-2025



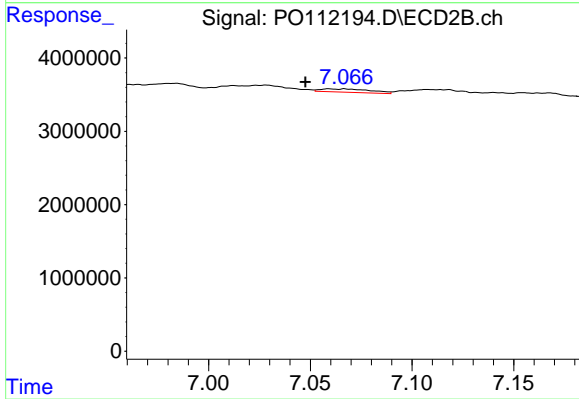
#33 AR-1260-3

R.T.: 6.586 min
 Delta R.T.: 0.008 min
 Response: 3851206
 Conc: 13.97 ng/ml



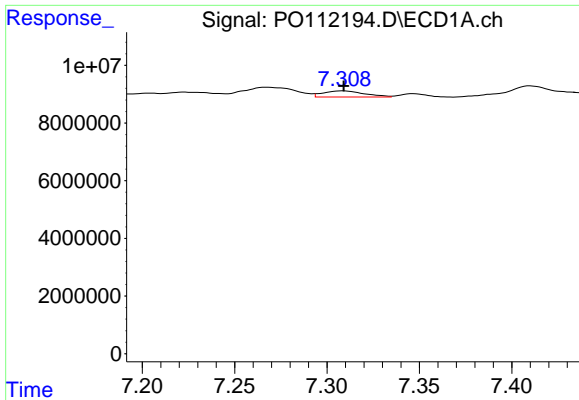
#34 AR-1260-4

R.T.: 7.066 min
 Delta R.T.: 0.000 min
 Response: 5072411
 Conc: 11.65 ng/ml



#34 AR-1260-4

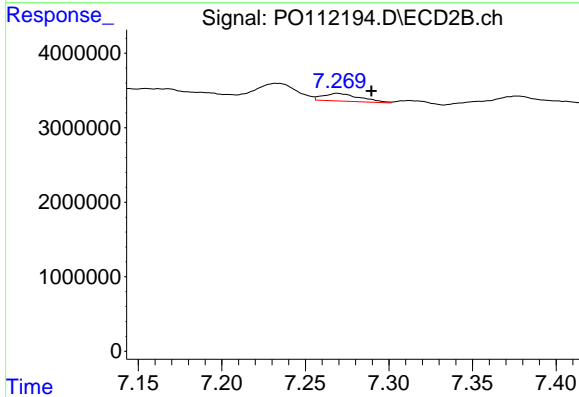
R.T.: 7.059 min
 Delta R.T.: 0.012 min
 Response: 778095
 Conc: 3.88 ng/ml



#35 AR-1260-5

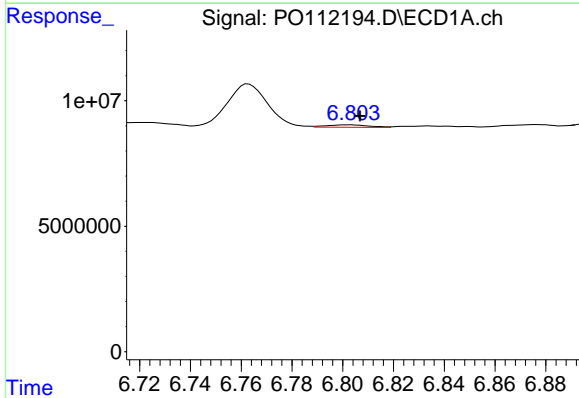
R.T.: 7.309 min
 Delta R.T.: 0.000 min
 Response: 3332299
 Conc: 2.64 ng/ml

Instrument :
 ECD_O
 ClientSampleId :
 HD-02-7-9-2025



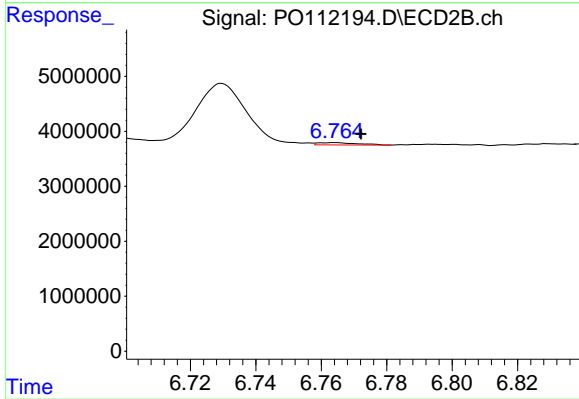
#35 AR-1260-5

R.T.: 7.269 min
 Delta R.T.: -0.020 min
 Response: 1576788
 Conc: 3.52 ng/ml



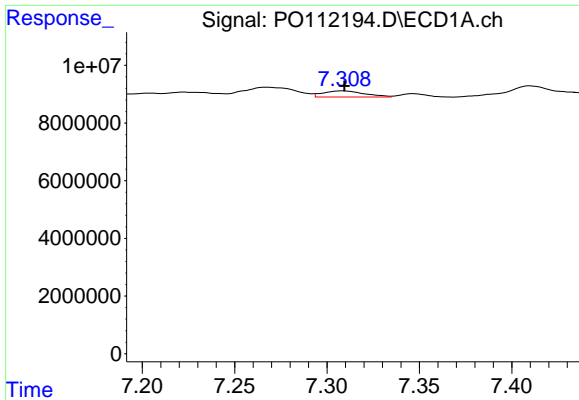
#36 AR-1262-1

R.T.: 6.803 min
 Delta R.T.: -0.004 min
 Response: 1135539
 Conc: 1.11 ng/ml



#36 AR-1262-1

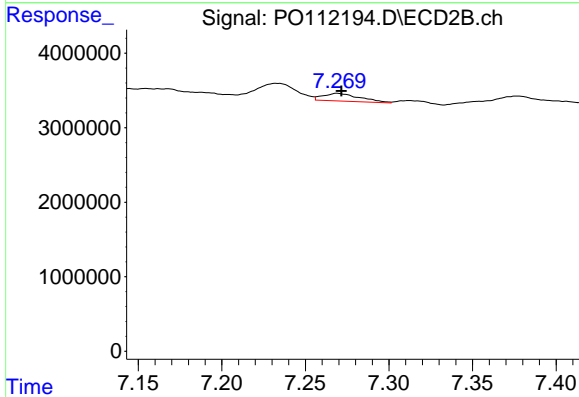
R.T.: 6.764 min
 Delta R.T.: -0.008 min
 Response: 357702
 Conc: 0.88 ng/ml



#37 AR-1262-2

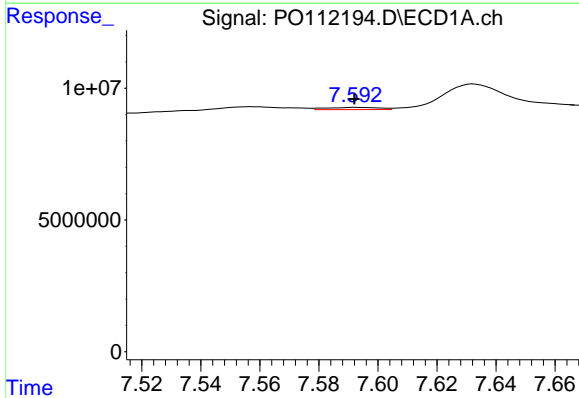
R.T.: 7.309 min
 Delta R.T.: -0.001 min
 Response: 3332299
 Conc: 2.03 ng/ml

Instrument :
 ECD_O
 ClientSampleId :
 HD-02-7-9-2025



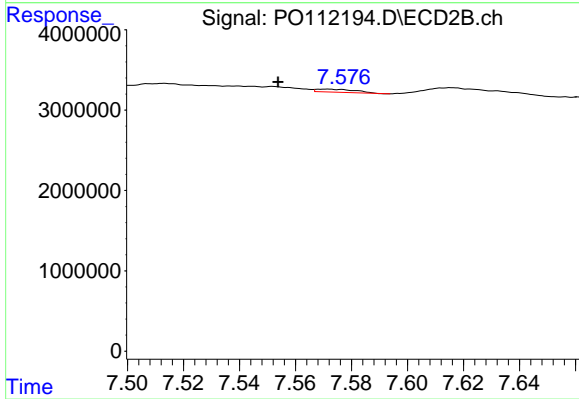
#37 AR-1262-2

R.T.: 7.269 min
 Delta R.T.: -0.002 min
 Response: 1576788
 Conc: 3.08 ng/ml



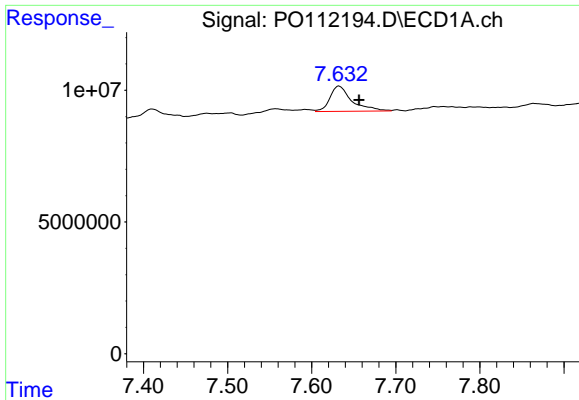
#38 AR-1262-3

R.T.: 7.593 min
 Delta R.T.: 0.000 min
 Response: 1037577
 Conc: 1.62 ng/ml



#38 AR-1262-3

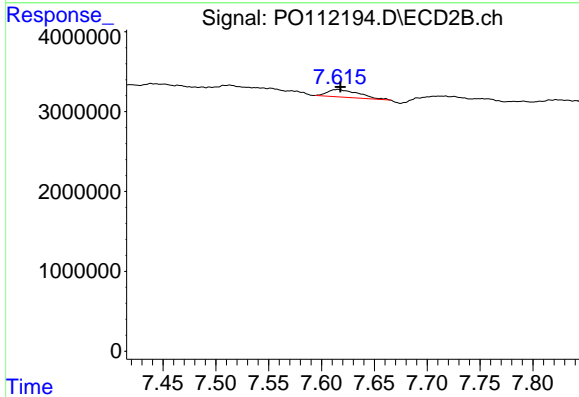
R.T.: 7.571 min
 Delta R.T.: 0.017 min
 Response: 357126
 Conc: 1.99 ng/ml



#39 AR-1262-4

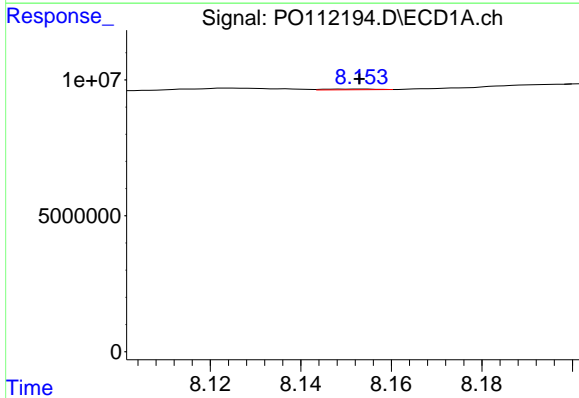
R.T.: 7.633 min
 Delta R.T.: -0.024 min
 Response: 17429835
 Conc: 16.27 ng/ml

Instrument :
 ECD_O
 ClientSampleId :
 HD-02-7-9-2025



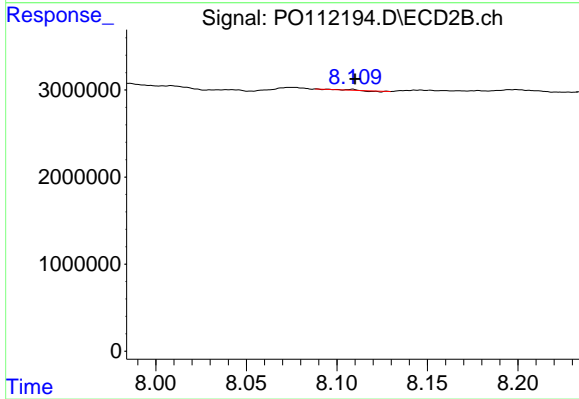
#39 AR-1262-4

R.T.: 7.616 min
 Delta R.T.: -0.002 min
 Response: 1888016
 Conc: 6.49 ng/ml



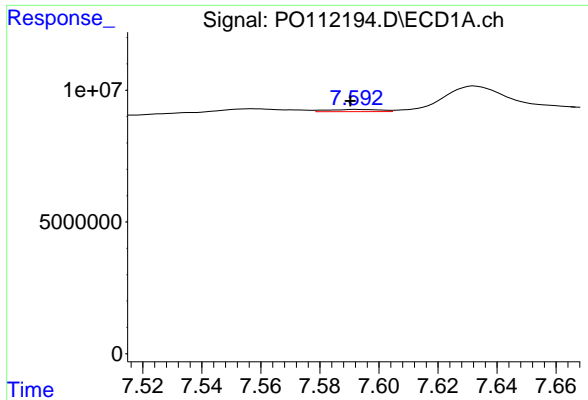
#40 AR-1262-5

R.T.: 8.152 min
 Delta R.T.: -0.001 min
 Response: 224477
 Conc: 0.50 ng/ml



#40 AR-1262-5

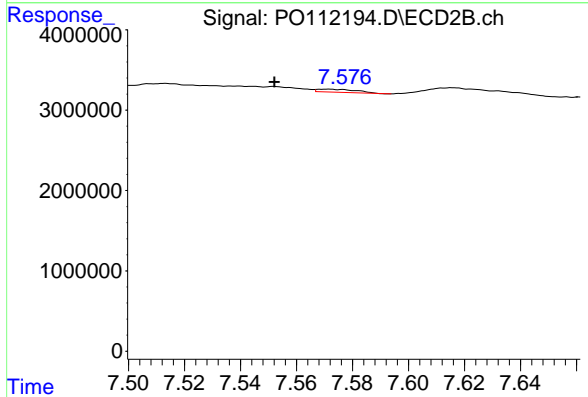
R.T.: 8.108 min
 Delta R.T.: -0.002 min
 Response: 1950
 Conc: 0.02 ng/ml



#41 AR-1268-1

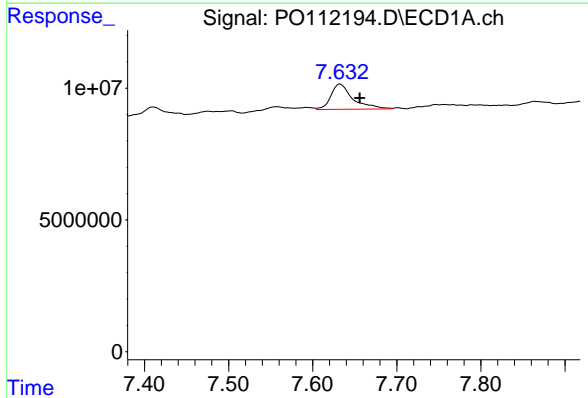
R.T.: 7.593 min
 Delta R.T.: 0.002 min
 Response: 1037577
 Conc: 0.56 ng/ml

Instrument :
 ECD_O
 ClientSampleId :
 HD-02-7-9-2025



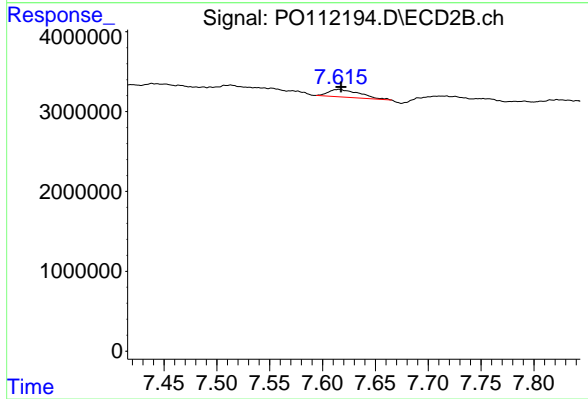
#41 AR-1268-1

R.T.: 7.571 min
 Delta R.T.: 0.019 min
 Response: 357126
 Conc: 0.73 ng/ml



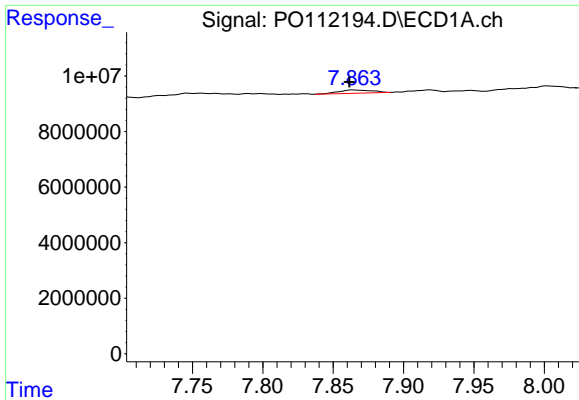
#42 AR-1268-2

R.T.: 7.633 min
 Delta R.T.: -0.023 min
 Response: 17429835
 Conc: 11.19 ng/ml



#42 AR-1268-2

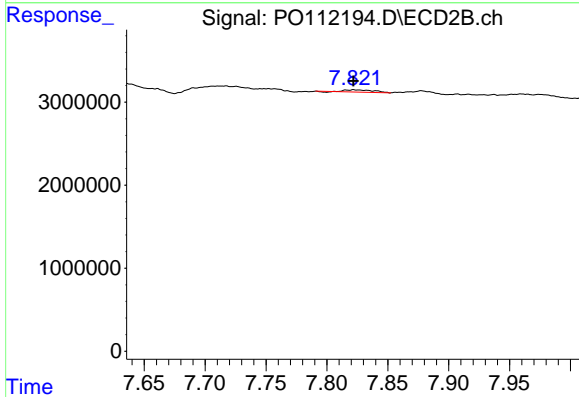
R.T.: 7.616 min
 Delta R.T.: -0.002 min
 Response: 1888016
 Conc: 4.53 ng/ml



#43 AR-1268-3

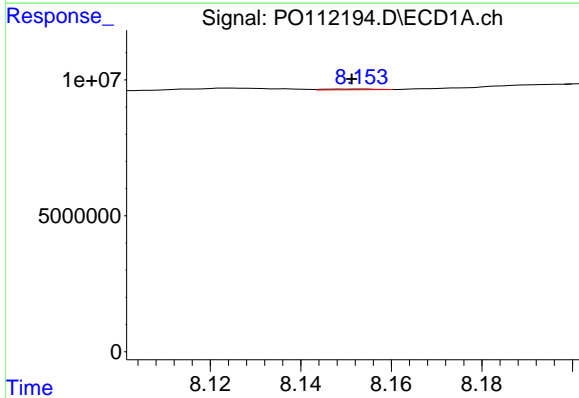
R.T.: 7.865 min
 Delta R.T.: 0.003 min
 Response: 1931860
 Conc: 1.49 ng/ml

Instrument :
 ECD_O
 ClientSampleId :
 HD-02-7-9-2025



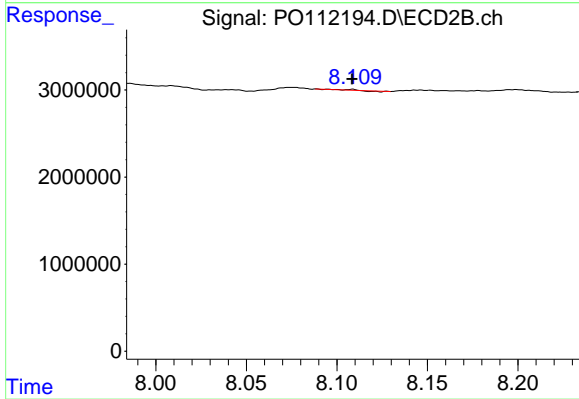
#43 AR-1268-3

R.T.: 7.822 min
 Delta R.T.: 0.000 min
 Response: 438631
 Conc: 1.39 ng/ml



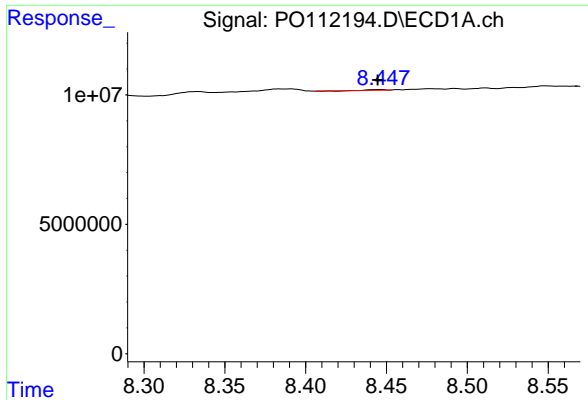
#44 AR-1268-4

R.T.: 8.152 min
 Delta R.T.: 0.000 min
 Response: 224477
 Conc: 0.47 ng/ml



#44 AR-1268-4

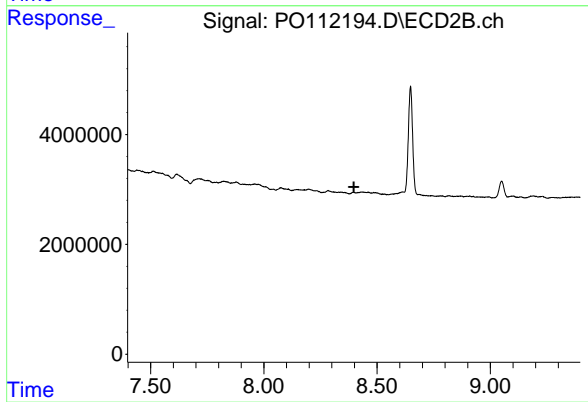
R.T.: 8.108 min
 Delta R.T.: 0.000 min
 Response: 1950
 Conc: 0.02 ng/ml



#45 AR-1268-5

R.T.: 8.446 min
Delta R.T.: 0.002 min
Response: 45024
Conc: 0.01 ng/ml

Instrument :
ECD_O
ClientSampleId :
HD-02-7-9-2025



#45 AR-1268-5

R.T.: 8.397 min
Delta R.T.: 0.000 min
Response: -82974
Conc: N.D.