

Data Path : Z:\pestpcbsrv\HPCHEM1\ECD\_0\Data\P0071025\  
 Data File : PO112196.D  
 Signal(s) : Signal #1: ECD1A.ch Signal #2: ECD2B.ch  
 Acq On : 10 Jul 2025 17:35  
 Operator : YP/AJ  
 Sample : AR1660CCC500  
 Misc :  
 ALS Vial : 49 Sample Multiplier: 1

Instrument :  
 ECD\_0  
 ClientSampleId :  
 AR1660CCC500

Integration File signal 1: autoint1.e  
 Integration File signal 2: autoint2.e  
 Quant Time: Jul 11 00:27:40 2025  
 Quant Method : Z:\pestpcbsrv\HPCHEM1\ECD\_0\methods\P0070825.M  
 Quant Title : GC EXTRACTABLES  
 QLast Update : Wed Jul 09 10:50:50 2025  
 Response via : Initial Calibration  
 Integrator: ChemStation

Volume Inj. : 2 µl  
 Signal #1 Phase : ZB-MR1 Signal #2 Phase: ZB-MR2  
 Signal #1 Info : 30Mx0.32mmx 0.50µ Signal #2 Info : 30M x 0.32mm x 0.25µm

Compound	RT#1	RT#2	Resp#1	Resp#2	ng/ml	ng/ml
System Monitoring Compounds						
1) SA Tetrachlo...	3.670	3.665	664.1E6	412.5E6	67.120	64.752
2) SA Decachlor...	8.701	8.647	281.2E6	79599673	41.123	46.186
Target Compounds						
3) L1 AR-1016-1	4.758	4.759	221.0E6	203.6E6	649.724	913.863 #
4) L1 AR-1016-2	4.776	4.791	324.6E6	14496555	652.820	44.049 #
5) L1 AR-1016-3	4.833	4.935	211.0E6	104.7E6	651.841	616.167
6) L1 AR-1016-4	4.953	4.977	172.7E6	81674763	672.489	595.178
7) L1 AR-1016-5	5.210	5.190	195.2E6	115.3E6	713.185	668.750
8) L2 AR-1221-1	3.881	3.873	19407094	14259400	166.422	173.272
9) L2 AR-1221-2	3.969	3.960	28448828	20623358	360.840	347.466
10) L2 AR-1221-3	4.044	4.035	110.6E6	76230292	410.320	403.812
11) L3 AR-1232-1	4.044	4.035	110.6E6	76230292	515.284	507.865
12) L3 AR-1232-2	4.536	4.759	156.7E6	203.6E6	1379.317	1330.235
13) L3 AR-1232-3	4.776	4.935	324.6E6	104.7E6	1417.596	1386.198
14) L3 AR-1232-4	4.953	5.019	172.7E6	99461392	1510.936	1507.260
15) L3 AR-1232-5	4.995	5.190	125.4E6	115.3E6	1708.973	1553.007
16) L4 AR-1242-1	4.758	4.741	221.0E6	138.2E6	762.977	713.090
17) L4 AR-1242-2	4.776	4.759	324.6E6	203.6E6	762.214	718.681
18) L4 AR-1242-3	4.833	4.935	211.0E6	104.7E6	770.994	718.481
19) L4 AR-1242-4	4.953	5.019	172.7E6	99461392	766.450	701.219
20) L4 AR-1242-5	5.604	5.539	49465853	114.8E6	233.692	631.448 #
21) L5 AR-1248-1	4.758	4.741	221.0E6	138.2E6	973.937	895.512
22) L5 AR-1248-2	4.995	4.977	125.4E6	81674763	406.840	396.927
23) L5 AR-1248-3	5.210	5.019	195.2E6	99461392	479.160	463.045
24) L5 AR-1248-4	5.563	5.190	175.0E6	115.3E6	303.259	445.745 #
25) L5 AR-1248-5	5.604	5.579	49465853	34841712	126.737	139.061
26) L6 AR-1254-1	5.563	5.539	175.0E6	114.8E6	284.541	301.063
27) L6 AR-1254-2	5.713	5.687	106.9E6	77902306	199.624	234.779
28) L6 AR-1254-3	6.133	6.104	239.3E6	128.5E6	285.062	266.654
29) L6 AR-1254-4	6.345	6.315	39316612	17414496	81.736	66.800
30) L6 AR-1254-5	6.764	6.731	283.8E6	155.9E6	366.699	437.391
31) L7 AR-1260-1	6.247	6.219	310.6E6	162.5E6	619.592	579.291
32) L7 AR-1260-2	6.438	6.407	402.2E6	188.2E6	544.898	553.477
33) L7 AR-1260-3	6.804	6.558	273.3E6	129.3E6	416.944	469.175
34) L7 AR-1260-4	7.063	7.063	235.0E6	12520228	539.883	62.400 #
35) L7 AR-1260-5	7.306	7.270	597.2E6	211.7E6	473.035	472.808
36) L8 AR-1262-1	6.804	6.771	273.3E6	135.9E6	267.498	333.744
37) L8 AR-1262-2	7.306	7.270	597.2E6	211.7E6	364.301	413.014
38) L8 AR-1262-3	7.590	7.552	128.4E6	47105223	199.930	262.389 #
39) L8 AR-1262-4	7.653	7.615	350.2E6	115.6E6	326.851	397.278
40) L8 AR-1262-5	8.150	8.108	107.9E6	31613080	240.797	298.847
41) L9 AR-1268-1	7.590	7.552	128.4E6	47105223	69.852	95.848 #

Data Path : Z:\pestpcbsrv\HPCHEM1\ECD\_0\Data\P0071025\  
 Data File : P0112196.D  
 Signal(s) : Signal #1: ECD1A.ch Signal #2: ECD2B.ch  
 Acq On : 10 Jul 2025 17:35  
 Operator : YP/AJ  
 Sample : AR1660CCC500  
 Misc :  
 ALS Vial : 49 Sample Multiplier: 1

Instrument :  
 ECD\_0  
 ClientSampleId :  
 AR1660CCC500

Integration File signal 1: autoint1.e  
 Integration File signal 2: autoint2.e  
 Quant Time: Jul 11 00:27:40 2025  
 Quant Method : Z:\pestpcbsrv\HPCHEM1\ECD\_0\methods\P0070825.M  
 Quant Title : GC EXTRACTABLES  
 QLast Update : Wed Jul 09 10:50:50 2025  
 Response via : Initial Calibration  
 Integrator: ChemStation

Volume Inj. : 2 µl  
 Signal #1 Phase : ZB-MR1 Signal #2 Phase: ZB-MR2  
 Signal #1 Info : 30Mx0.32mmx 0.50µ Signal #2 Info : 30M x 0.32mm x 0.25µm

	Compound	RT#1	RT#2	Resp#1	Resp#2	ng/ml	ng/ml
42)	L9 AR-1268-2	7.653	7.615	350.2E6	115.6E6	224.832	277.037
43)	L9 AR-1268-3	7.861	7.820	5686158	1697196	4.375	5.364
44)	L9 AR-1268-4	8.150	8.108	107.9E6	31613080	224.624	283.495 #
45)	L9 AR-1268-5	8.444	8.396	28860238	8543088	8.843	11.759 #

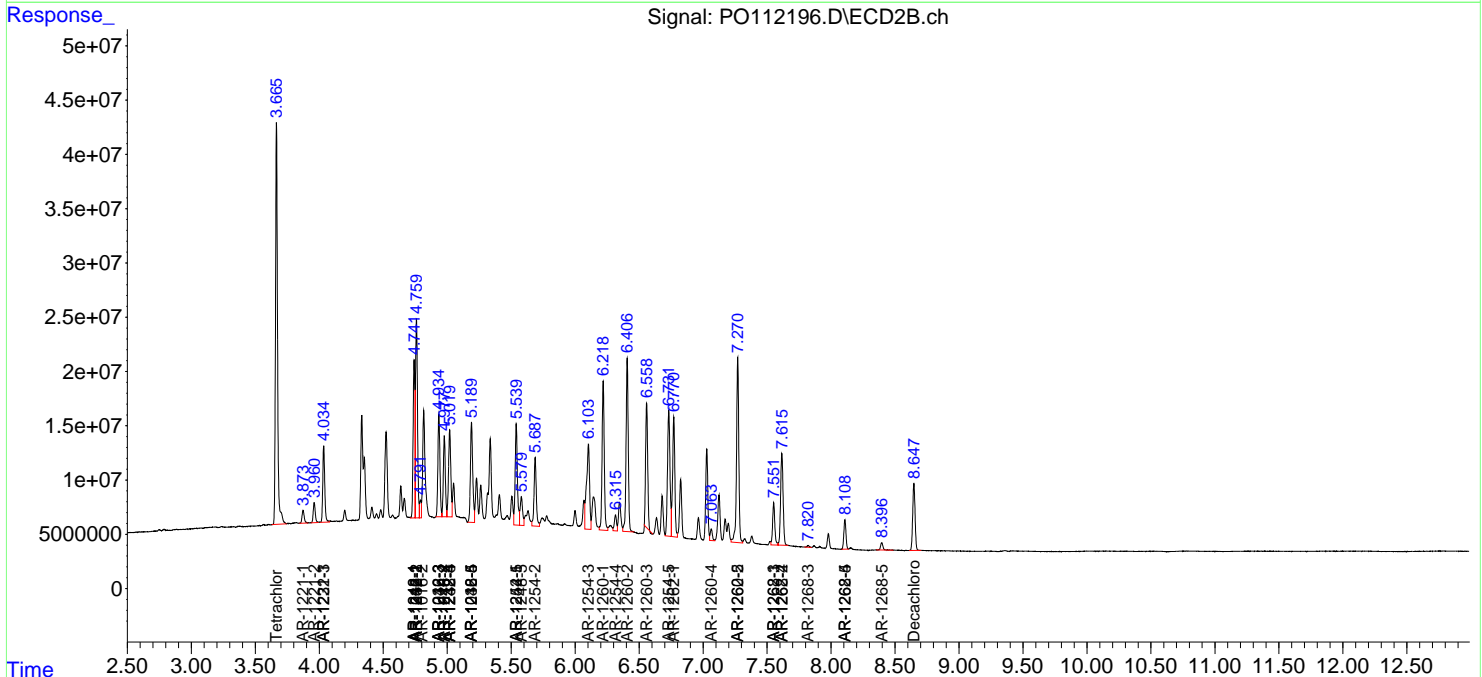
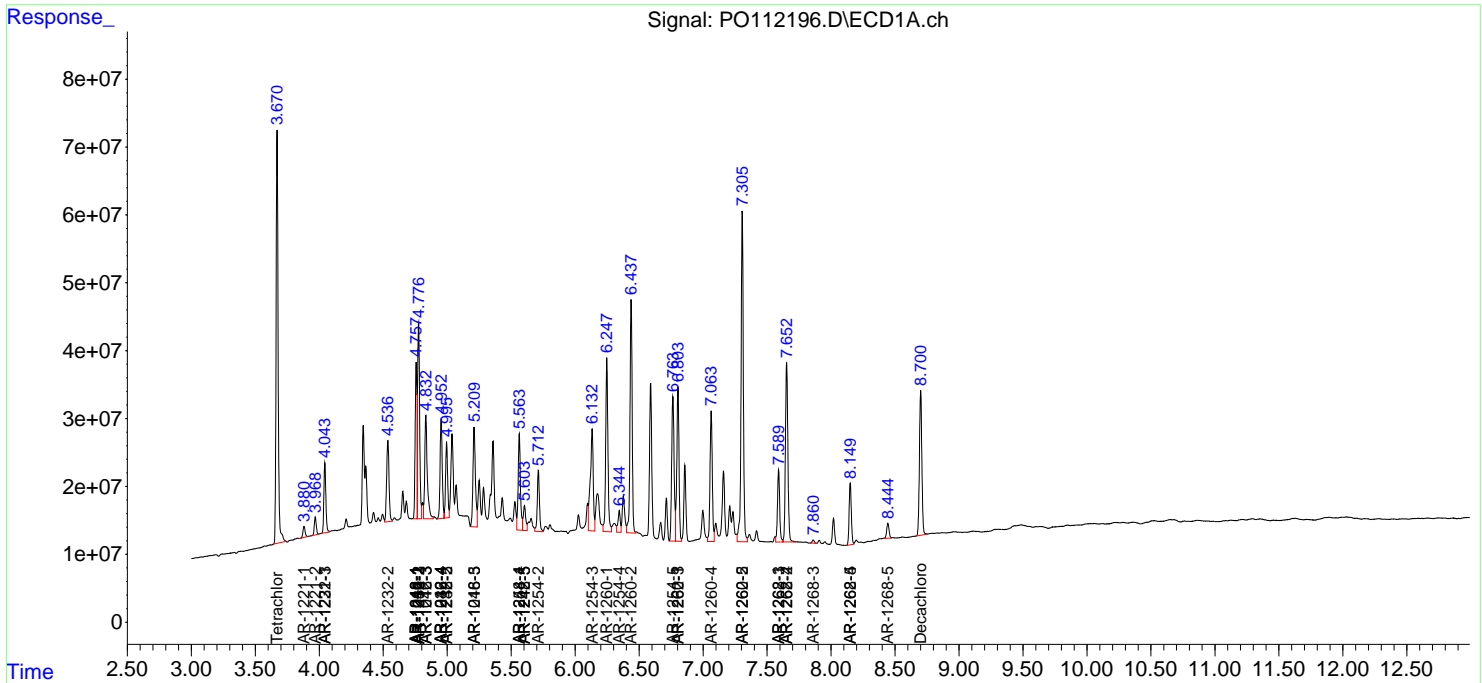
(f)=RT Delta > 1/2 Window (#)=Amounts differ by > 25% (m)=manual int.

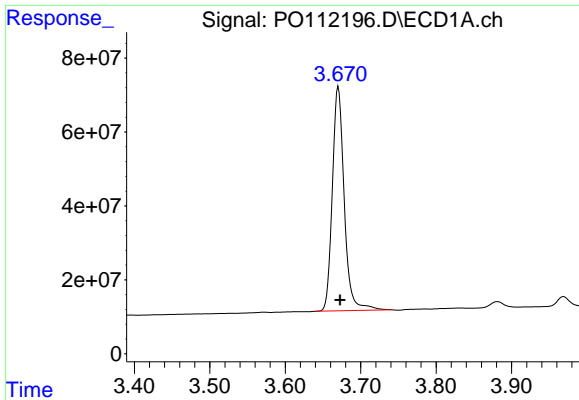
Data Path : Z:\pestpcbsrv\HPCHEM1\ECD\_O\Data\PO071025\  
 Data File : PO112196.D  
 Signal(s) : Signal #1: ECD1A.ch Signal #2: ECD2B.ch  
 Acq On : 10 Jul 2025 17:35  
 Operator : YP/AJ  
 Sample : AR1660CCC500  
 Misc :  
 ALS Vial : 49 Sample Multiplier: 1

**Instrument :**  
 ECD\_O  
**ClientSampleId :**  
 AR1660CCC500

Integration File signal 1: autoint1.e  
 Integration File signal 2: autoint2.e  
 Quant Time: Jul 11 00:27:40 2025  
 Quant Method : Z:\pestpcbsrv\HPCHEM1\ECD\_O\methods\PO070825.M  
 Quant Title : GC EXTRACTABLES  
 QLast Update : Wed Jul 09 10:50:50 2025  
 Response via : Initial Calibration  
 Integrator: ChemStation

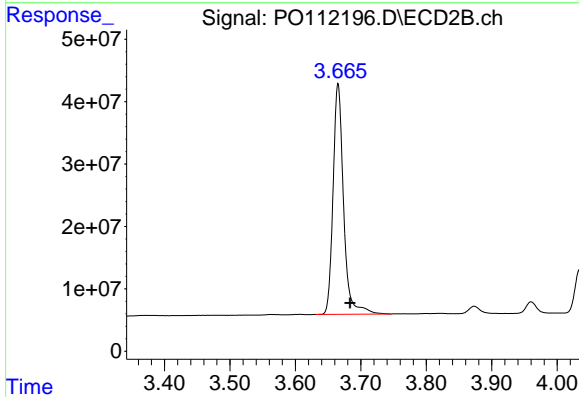
Volume Inj. : 2 µl  
 Signal #1 Phase : ZB-MR1 Signal #2 Phase: ZB-MR2  
 Signal #1 Info : 30Mx0.32mmx 0.50µ Signal #2 Info : 30M x 0.32mm x 0.25µm



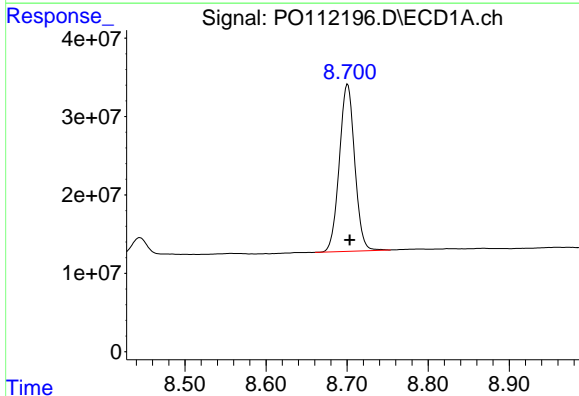


#1 Tetrachloro-m-xylene  
 R.T.: 3.670 min  
 Delta R.T.: -0.003 min  
 Response: 664136733  
 Conc: 67.12 ng/ml

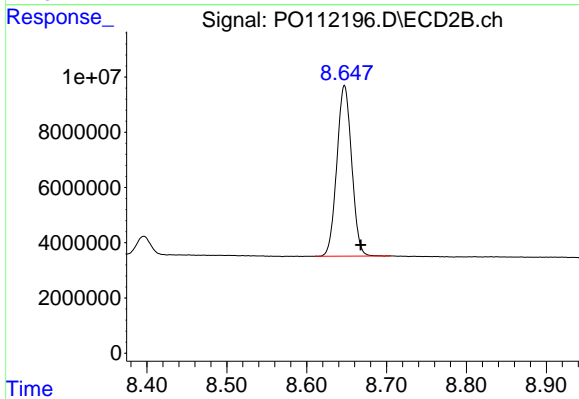
Instrument :  
 ECD\_O  
 ClientSampleId :  
 AR1660CCC500



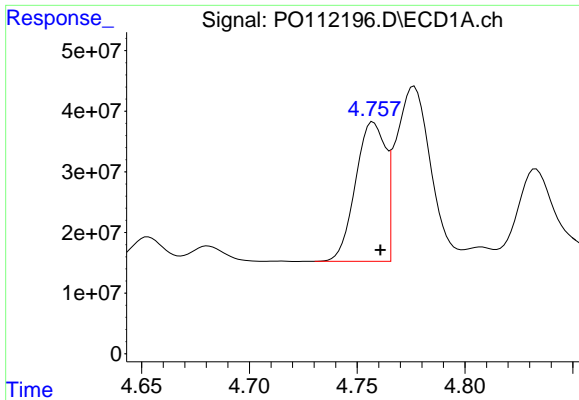
#1 Tetrachloro-m-xylene  
 R.T.: 3.665 min  
 Delta R.T.: -0.018 min  
 Response: 412538137  
 Conc: 64.75 ng/ml



#2 Decachlorobiphenyl  
 R.T.: 8.701 min  
 Delta R.T.: -0.003 min  
 Response: 281161733  
 Conc: 41.12 ng/ml



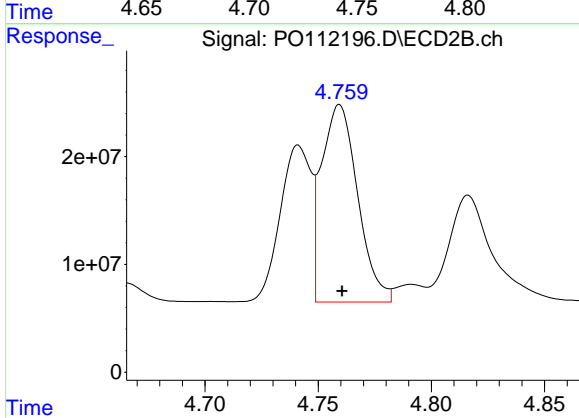
#2 Decachlorobiphenyl  
 R.T.: 8.647 min  
 Delta R.T.: -0.021 min  
 Response: 79599673  
 Conc: 46.19 ng/ml



#3 AR-1016-1

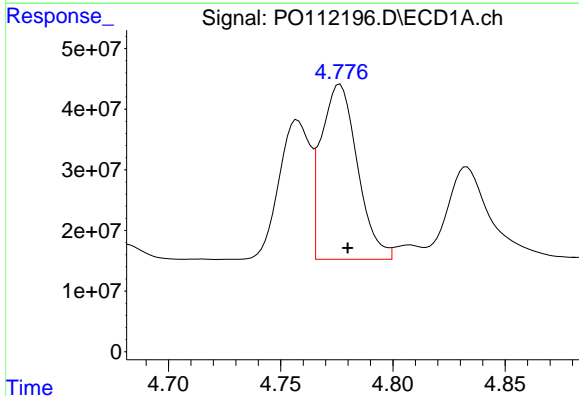
R.T.: 4.758 min  
 Delta R.T.: -0.003 min  
 Response: 220986043  
 Conc: 649.72 ng/ml

Instrument :  
 ECD\_O  
 ClientSampleId :  
 AR1660CCC500



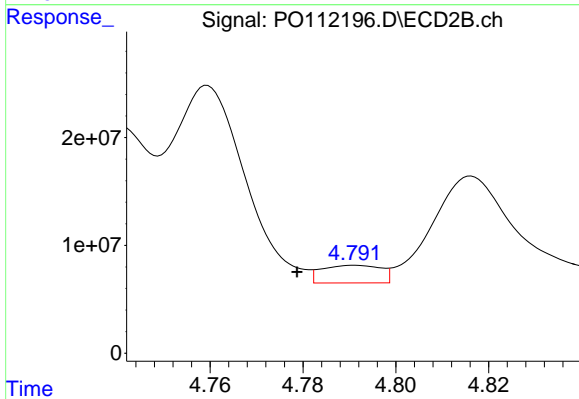
#3 AR-1016-1

R.T.: 4.759 min  
 Delta R.T.: -0.001 min  
 Response: 203640032  
 Conc: 913.86 ng/ml



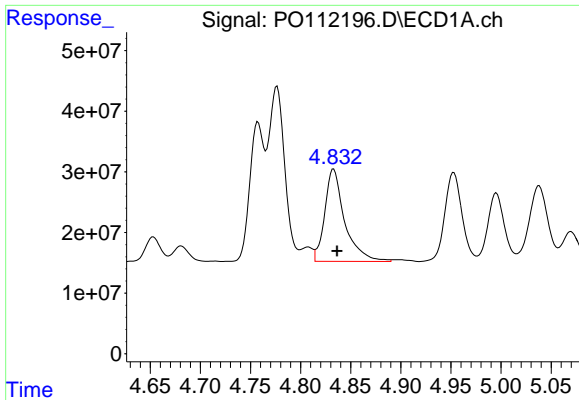
#4 AR-1016-2

R.T.: 4.776 min  
 Delta R.T.: -0.003 min  
 Response: 324641990  
 Conc: 652.82 ng/ml



#4 AR-1016-2

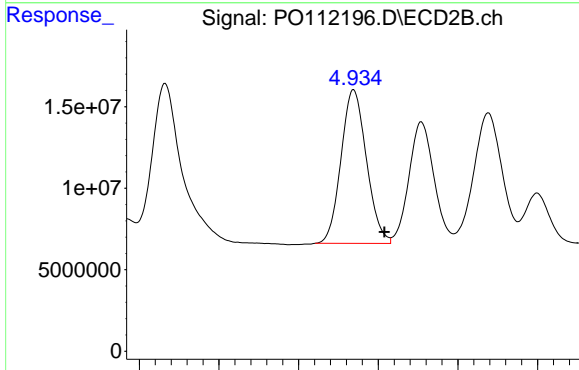
R.T.: 4.791 min  
 Delta R.T.: 0.012 min  
 Response: 14496555  
 Conc: 44.05 ng/ml



#5 AR-1016-3

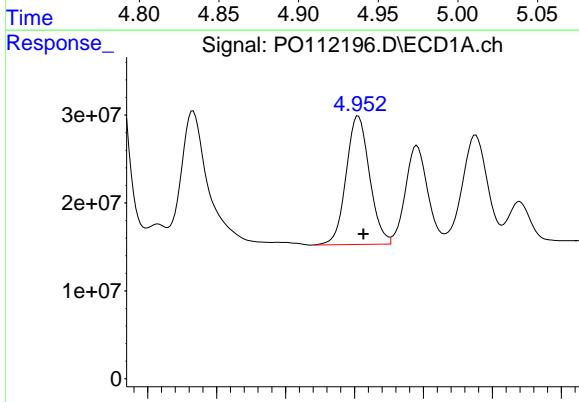
R.T.: 4.833 min  
 Delta R.T.: -0.003 min  
 Response: 211009995  
 Conc: 651.84 ng/ml

Instrument :  
 ECD\_O  
 ClientSampleId :  
 AR1660CCC500



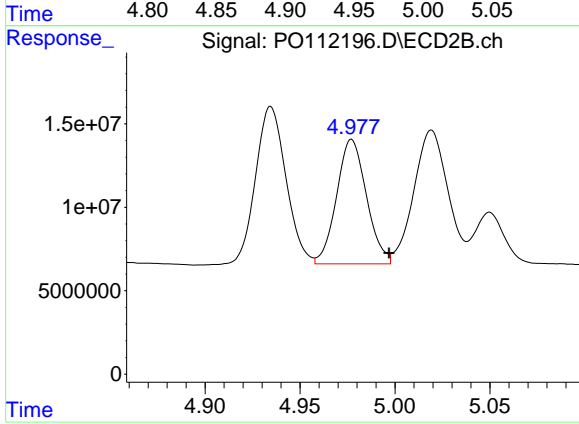
#5 AR-1016-3

R.T.: 4.935 min  
 Delta R.T.: -0.019 min  
 Response: 104666286  
 Conc: 616.17 ng/ml



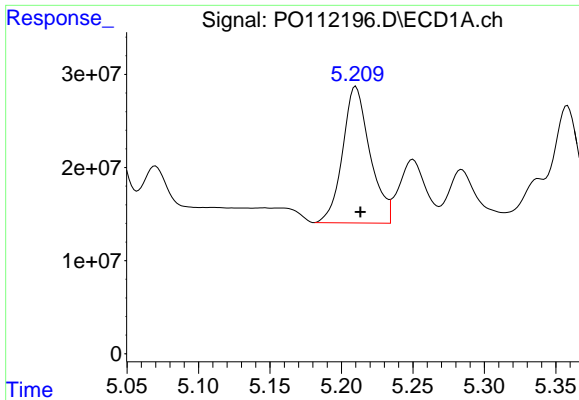
#6 AR-1016-4

R.T.: 4.953 min  
 Delta R.T.: -0.004 min  
 Response: 172695027  
 Conc: 672.49 ng/ml



#6 AR-1016-4

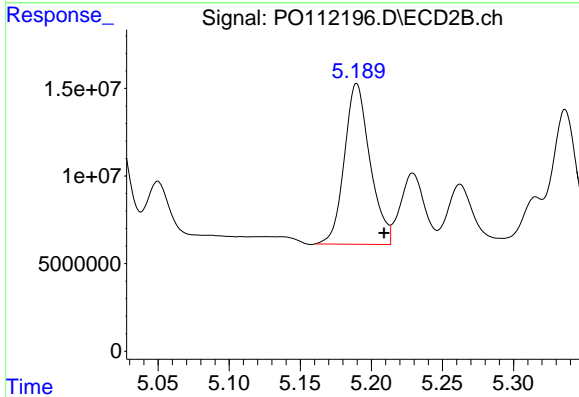
R.T.: 4.977 min  
 Delta R.T.: -0.020 min  
 Response: 81674763  
 Conc: 595.18 ng/ml



#7 AR-1016-5

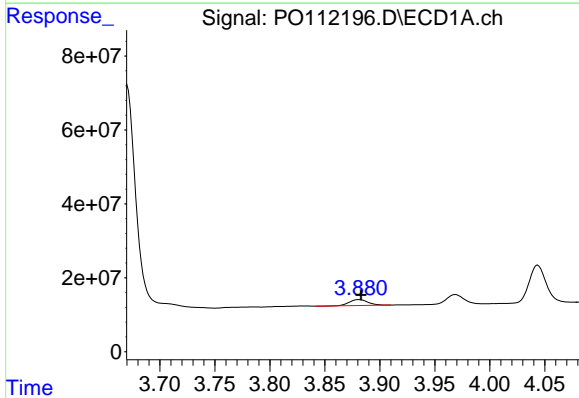
R.T.: 5.210 min  
 Delta R.T.: -0.003 min  
 Response: 195171428  
 Conc: 713.18 ng/ml

Instrument :  
 ECD\_O  
 ClientSampleId :  
 AR1660CCC500



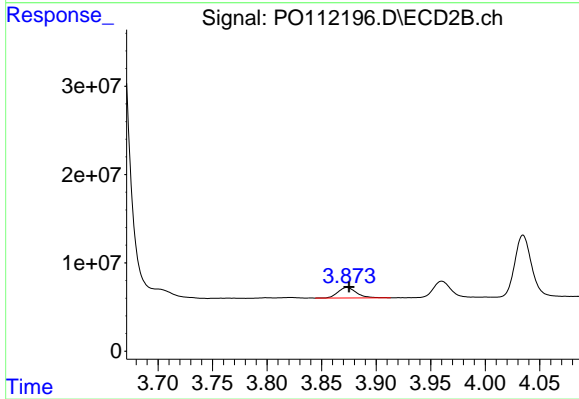
#7 AR-1016-5

R.T.: 5.190 min  
 Delta R.T.: -0.019 min  
 Response: 115326217  
 Conc: 668.75 ng/ml



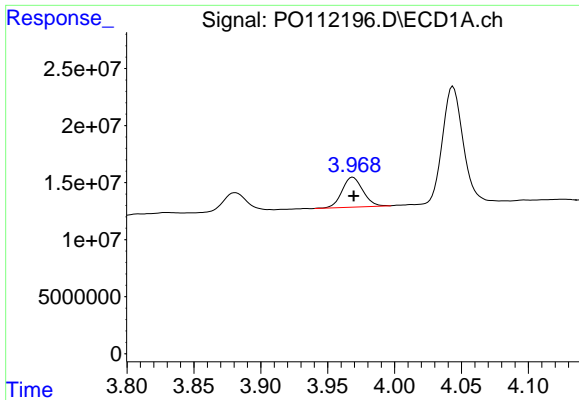
#8 AR-1221-1

R.T.: 3.881 min  
 Delta R.T.: -0.002 min  
 Response: 19407094  
 Conc: 166.42 ng/ml



#8 AR-1221-1

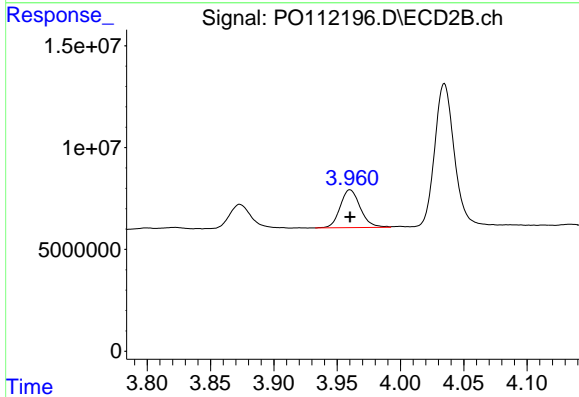
R.T.: 3.873 min  
 Delta R.T.: -0.002 min  
 Response: 14259400  
 Conc: 173.27 ng/ml



#9 AR-1221-2

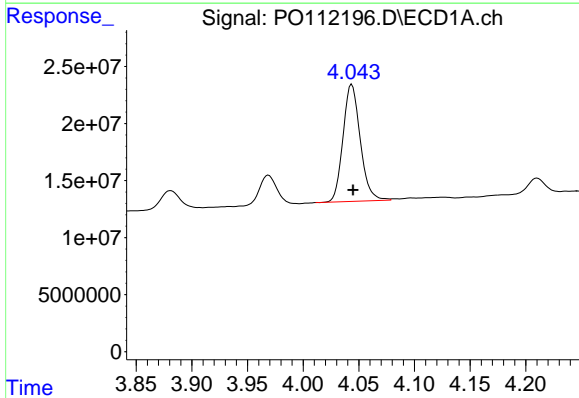
R.T.: 3.969 min  
 Delta R.T.: 0.000 min  
 Response: 28448828  
 Conc: 360.84 ng/ml

Instrument :  
 ECD\_O  
 ClientSampleId :  
 AR1660CCC500



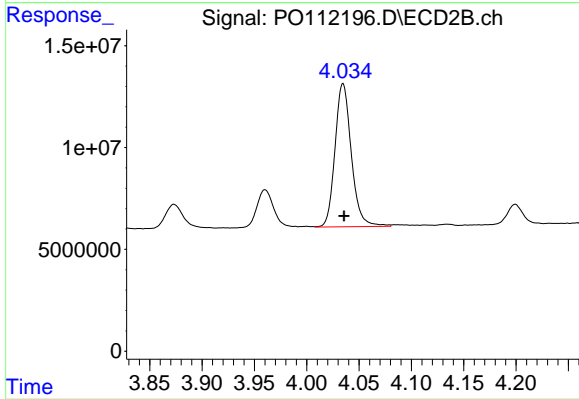
#9 AR-1221-2

R.T.: 3.960 min  
 Delta R.T.: 0.000 min  
 Response: 20623358  
 Conc: 347.47 ng/ml



#10 AR-1221-3

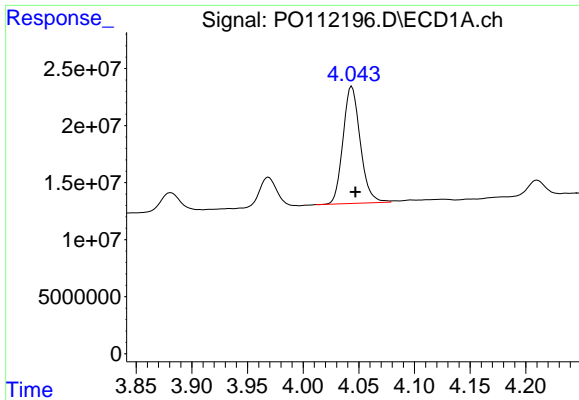
R.T.: 4.044 min  
 Delta R.T.: -0.001 min  
 Response: 110614850  
 Conc: 410.32 ng/ml



#10 AR-1221-3

R.T.: 4.035 min  
 Delta R.T.: -0.001 min  
 Response: 76230292  
 Conc: 403.81 ng/ml

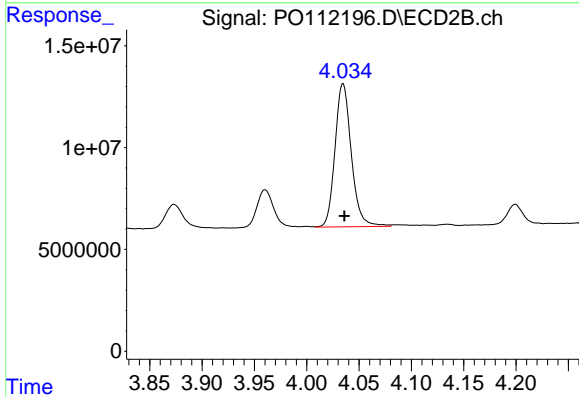




#11 AR-1232-1

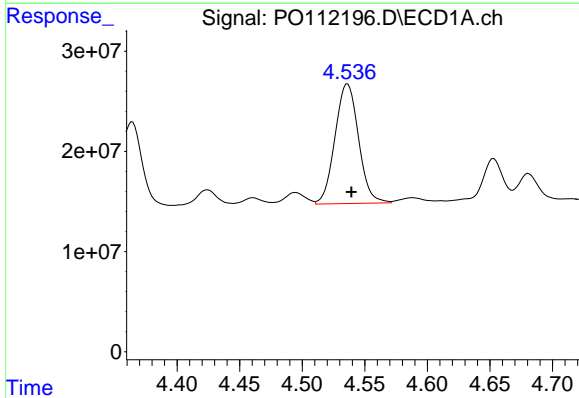
R.T.: 4.044 min  
 Delta R.T.: -0.003 min  
 Response: 110614850  
 Conc: 515.28 ng/ml

Instrument :  
 ECD\_O  
 ClientSampleId :  
 AR1660CCC500



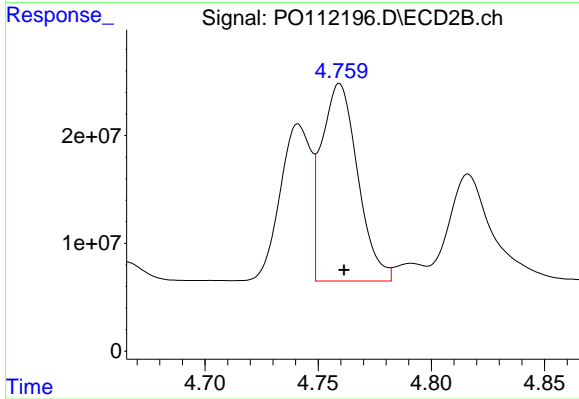
#11 AR-1232-1

R.T.: 4.035 min  
 Delta R.T.: -0.001 min  
 Response: 76230292  
 Conc: 507.87 ng/ml



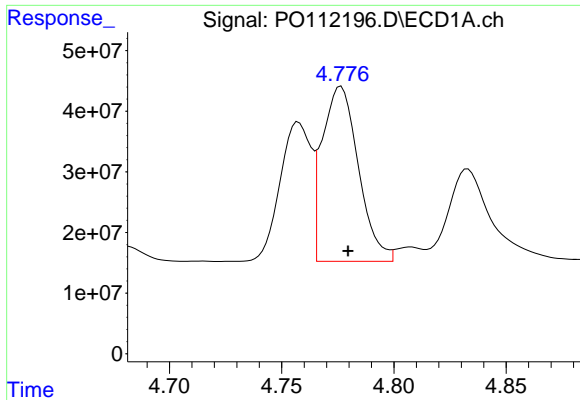
#12 AR-1232-2

R.T.: 4.536 min  
 Delta R.T.: -0.003 min  
 Response: 156741381  
 Conc: 1379.32 ng/ml



#12 AR-1232-2

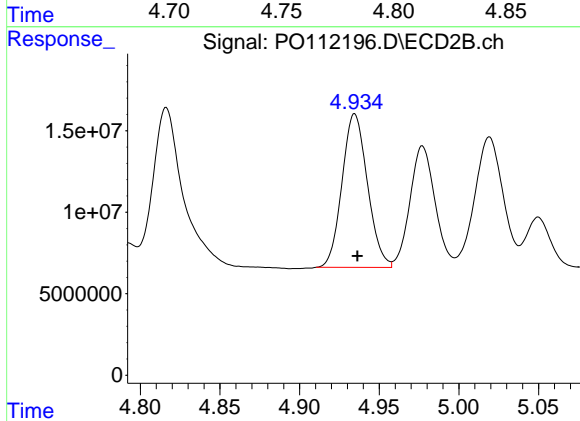
R.T.: 4.759 min  
 Delta R.T.: -0.002 min  
 Response: 203640032  
 Conc: 1330.24 ng/ml



#13 AR-1232-3

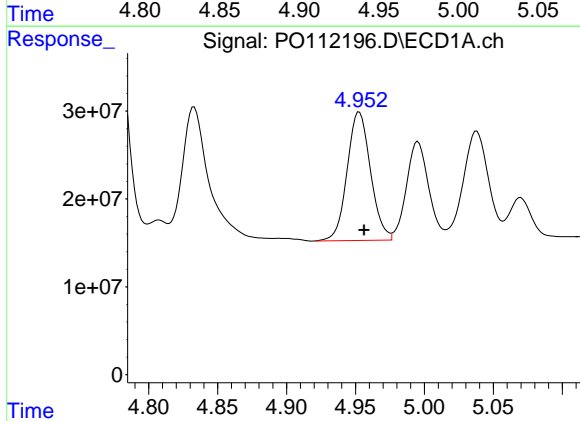
R.T.: 4.776 min  
 Delta R.T.: -0.003 min  
 Response: 324641990  
 Conc: 1417.60 ng/ml

Instrument :  
 ECD\_O  
 ClientSampleId :  
 AR1660CCC500



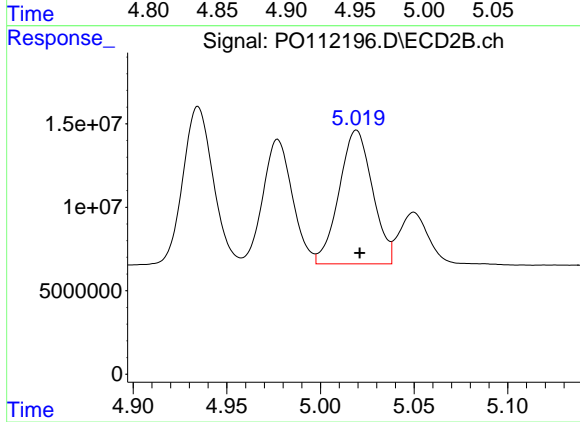
#13 AR-1232-3

R.T.: 4.935 min  
 Delta R.T.: -0.002 min  
 Response: 104666286  
 Conc: 1386.20 ng/ml



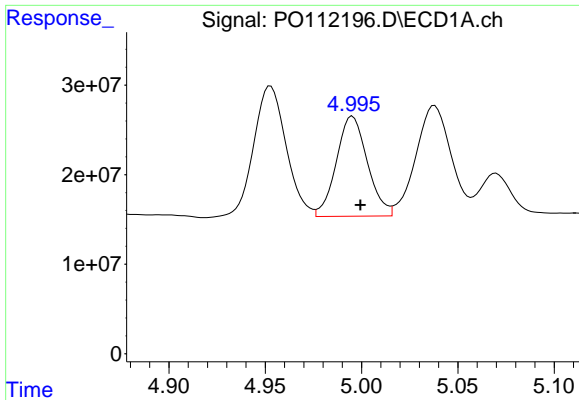
#14 AR-1232-4

R.T.: 4.953 min  
 Delta R.T.: -0.003 min  
 Response: 172695027  
 Conc: 1510.94 ng/ml



#14 AR-1232-4

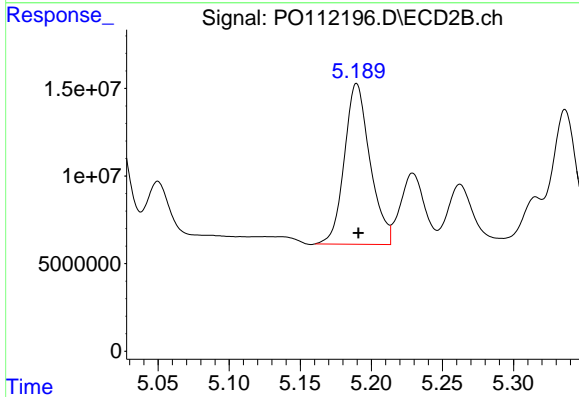
R.T.: 5.019 min  
 Delta R.T.: -0.002 min  
 Response: 99461392  
 Conc: 1507.26 ng/ml



#15 AR-1232-5

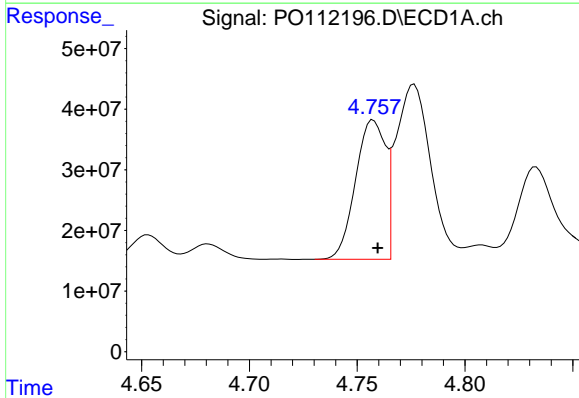
R.T.: 4.995 min  
 Delta R.T.: -0.004 min  
 Response: 125439007  
 Conc: 1708.97 ng/ml

Instrument :  
 ECD\_O  
 ClientSampleId :  
 AR1660CCC500



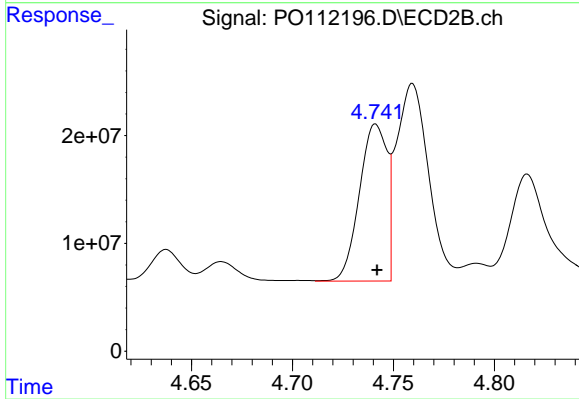
#15 AR-1232-5

R.T.: 5.190 min  
 Delta R.T.: -0.001 min  
 Response: 115326217  
 Conc: 1553.01 ng/ml



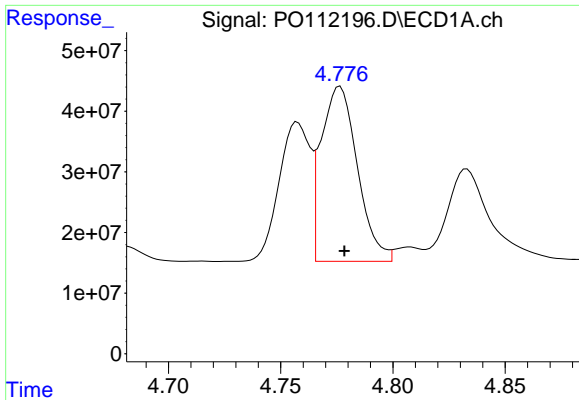
#16 AR-1242-1

R.T.: 4.758 min  
 Delta R.T.: -0.002 min  
 Response: 220986043  
 Conc: 762.98 ng/ml



#16 AR-1242-1

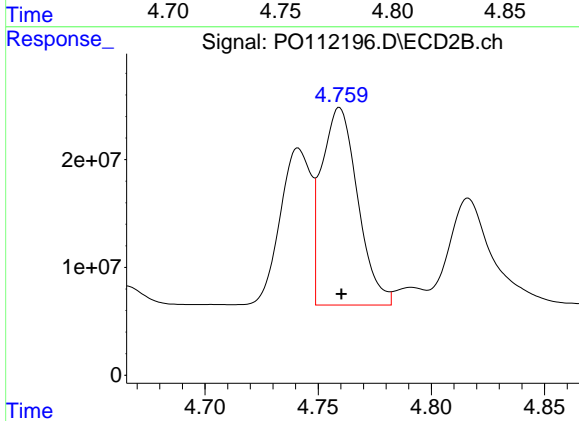
R.T.: 4.741 min  
 Delta R.T.: 0.000 min  
 Response: 138238486  
 Conc: 713.09 ng/ml



#17 AR-1242-2

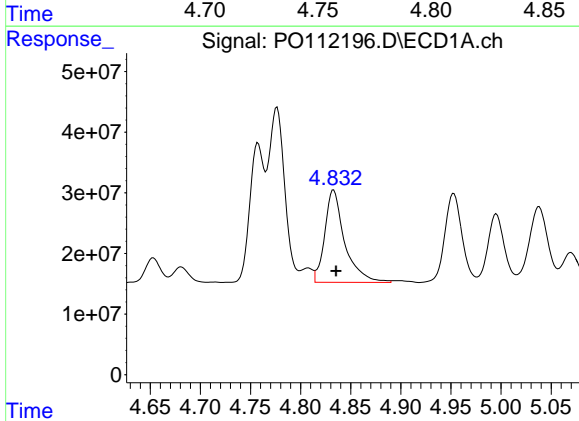
R.T.: 4.776 min  
 Delta R.T.: -0.002 min  
 Response: 324641990  
 Conc: 762.21 ng/ml

Instrument :  
 ECD\_O  
 ClientSampleId :  
 AR1660CCC500



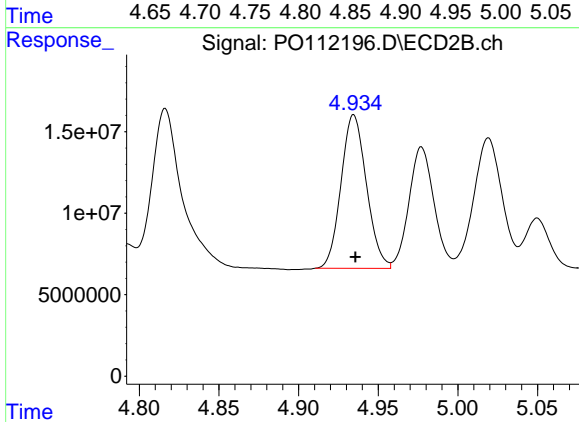
#17 AR-1242-2

R.T.: 4.759 min  
 Delta R.T.: 0.000 min  
 Response: 203640032  
 Conc: 718.68 ng/ml



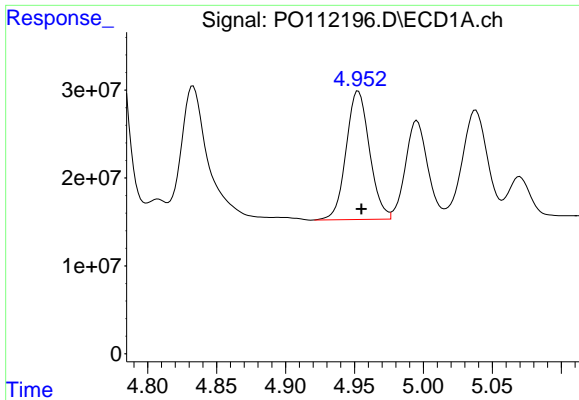
#18 AR-1242-3

R.T.: 4.833 min  
 Delta R.T.: -0.002 min  
 Response: 211009995  
 Conc: 770.99 ng/ml



#18 AR-1242-3

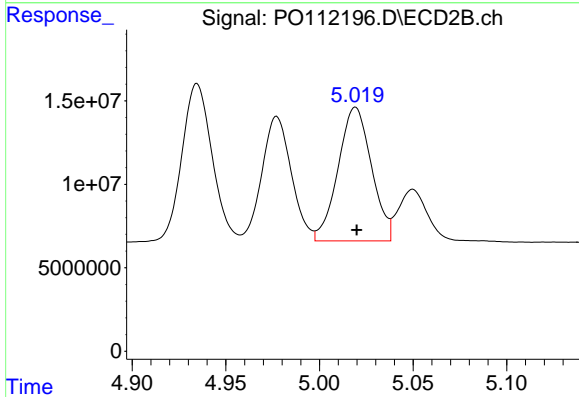
R.T.: 4.935 min  
 Delta R.T.: -0.001 min  
 Response: 104666286  
 Conc: 718.48 ng/ml



#19 AR-1242-4

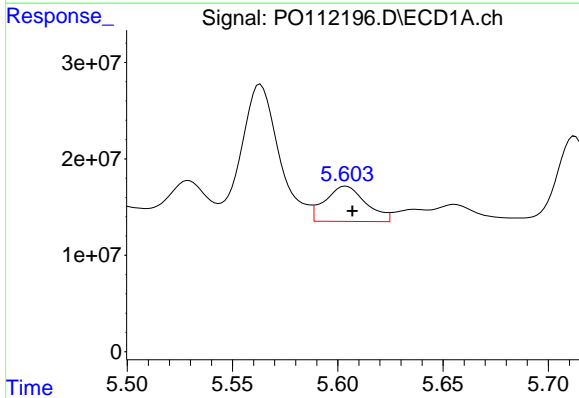
R.T.: 4.953 min  
 Delta R.T.: -0.002 min  
 Response: 172695027  
 Conc: 766.45 ng/ml

Instrument :  
 ECD\_O  
 ClientSampleId :  
 AR1660CCC500



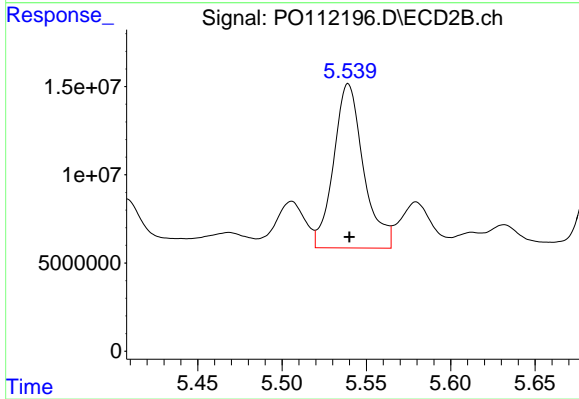
#19 AR-1242-4

R.T.: 5.019 min  
 Delta R.T.: 0.000 min  
 Response: 99461392  
 Conc: 701.22 ng/ml



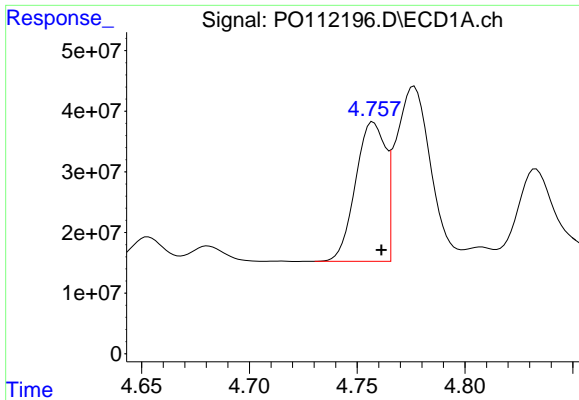
#20 AR-1242-5

R.T.: 5.604 min  
 Delta R.T.: -0.003 min  
 Response: 49465853  
 Conc: 233.69 ng/ml



#20 AR-1242-5

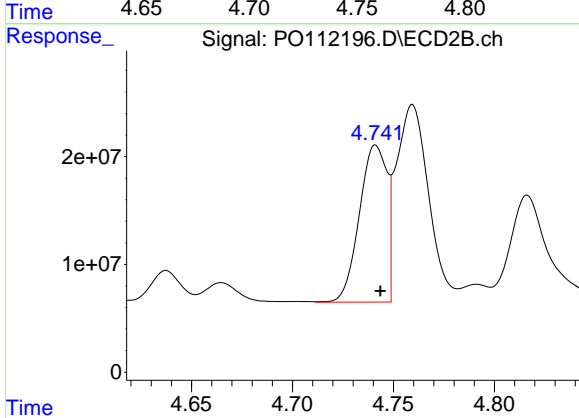
R.T.: 5.539 min  
 Delta R.T.: 0.000 min  
 Response: 114755722  
 Conc: 631.45 ng/ml



#21 AR-1248-1

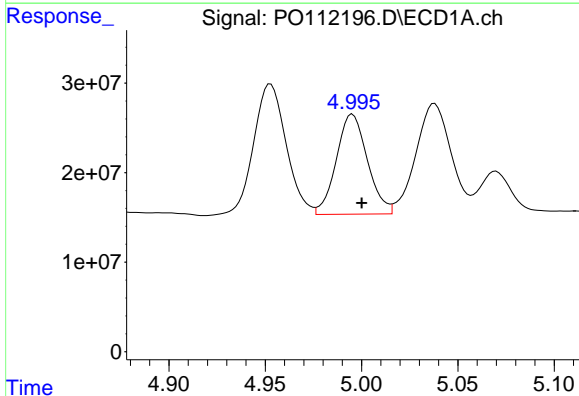
R.T.: 4.758 min  
 Delta R.T.: -0.004 min  
 Response: 220986043  
 Conc: 973.94 ng/ml

Instrument :  
 ECD\_O  
 ClientSampleId :  
 AR1660CCC500



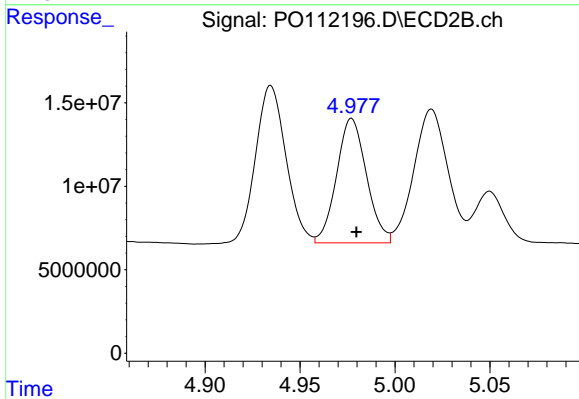
#21 AR-1248-1

R.T.: 4.741 min  
 Delta R.T.: -0.002 min  
 Response: 138238486  
 Conc: 895.51 ng/ml



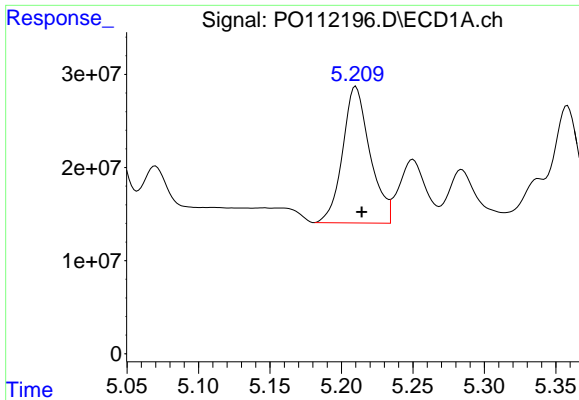
#22 AR-1248-2

R.T.: 4.995 min  
 Delta R.T.: -0.005 min  
 Response: 125439007  
 Conc: 406.84 ng/ml



#22 AR-1248-2

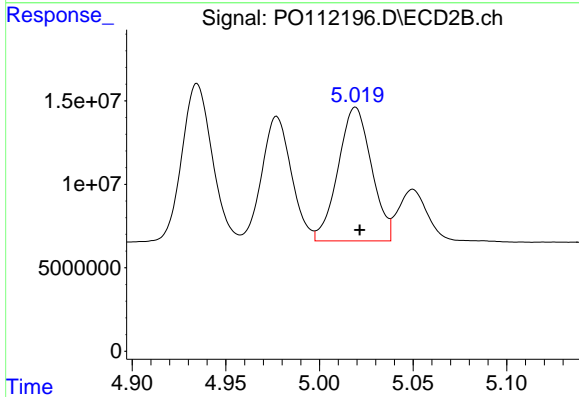
R.T.: 4.977 min  
 Delta R.T.: -0.003 min  
 Response: 81674763  
 Conc: 396.93 ng/ml



#23 AR-1248-3

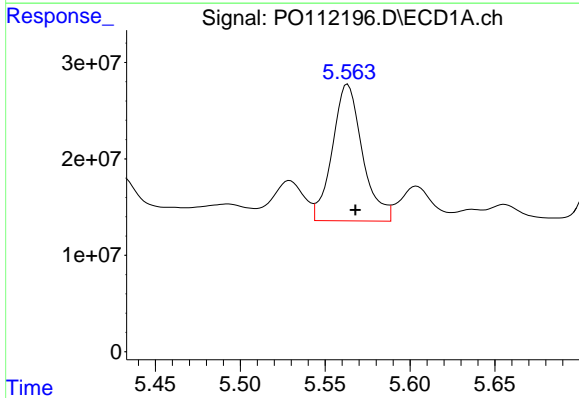
R.T.: 5.210 min  
 Delta R.T.: -0.004 min  
 Response: 195171428  
 Conc: 479.16 ng/ml

Instrument :  
 ECD\_O  
 ClientSampleId :  
 AR1660CCC500



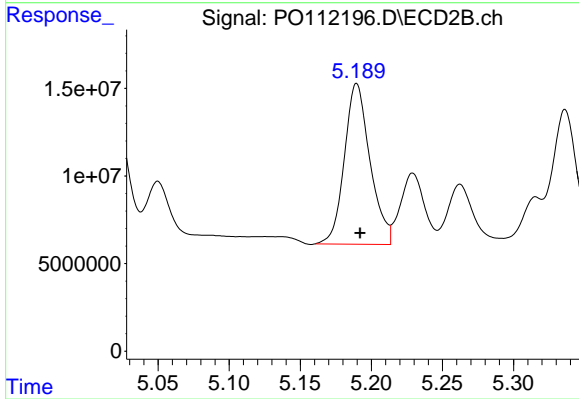
#23 AR-1248-3

R.T.: 5.019 min  
 Delta R.T.: -0.002 min  
 Response: 99461392  
 Conc: 463.05 ng/ml



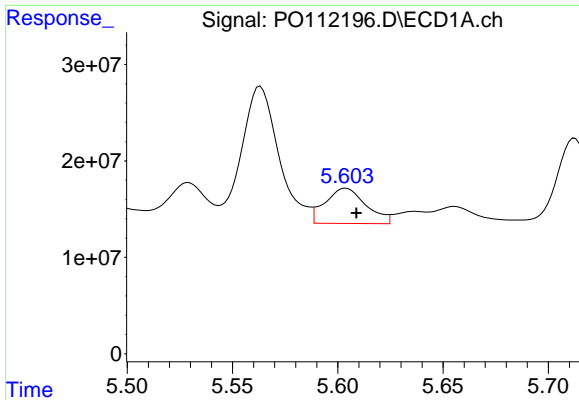
#24 AR-1248-4

R.T.: 5.563 min  
 Delta R.T.: -0.004 min  
 Response: 175025141  
 Conc: 303.26 ng/ml



#24 AR-1248-4

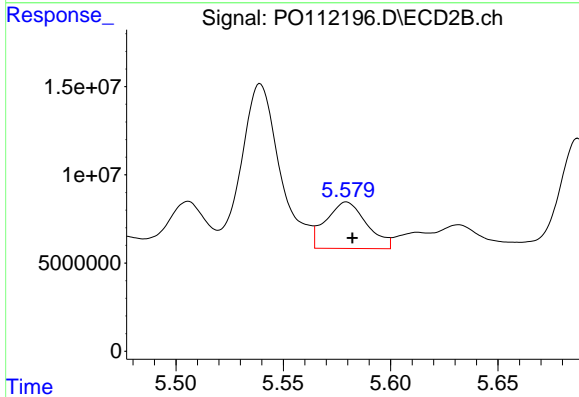
R.T.: 5.190 min  
 Delta R.T.: -0.002 min  
 Response: 115326217  
 Conc: 445.75 ng/ml



#25 AR-1248-5

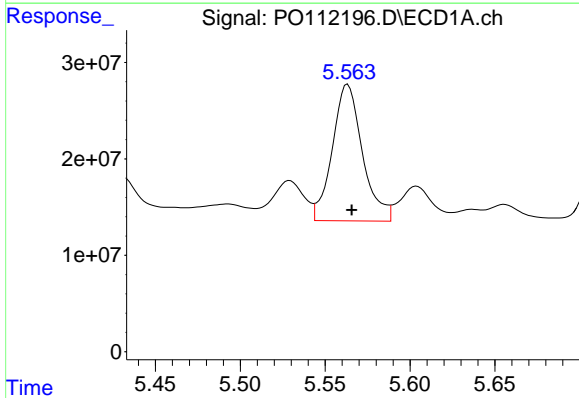
R.T.: 5.604 min  
 Delta R.T.: -0.005 min  
 Response: 49465853  
 Conc: 126.74 ng/ml

Instrument :  
 ECD\_O  
 ClientSampleId :  
 AR1660CCC500



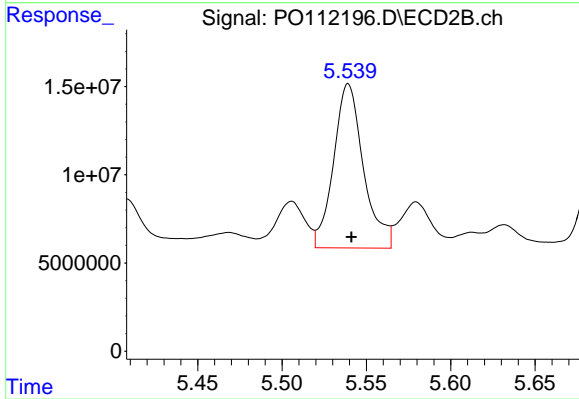
#25 AR-1248-5

R.T.: 5.579 min  
 Delta R.T.: -0.003 min  
 Response: 34841712  
 Conc: 139.06 ng/ml



#26 AR-1254-1

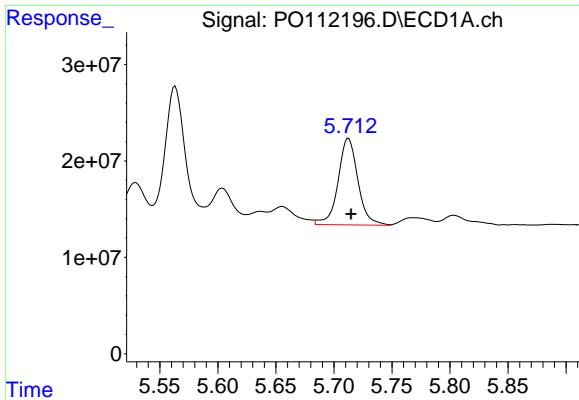
R.T.: 5.563 min  
 Delta R.T.: -0.002 min  
 Response: 175025141  
 Conc: 284.54 ng/ml



#26 AR-1254-1

R.T.: 5.539 min  
 Delta R.T.: -0.002 min  
 Response: 114755722  
 Conc: 301.06 ng/ml

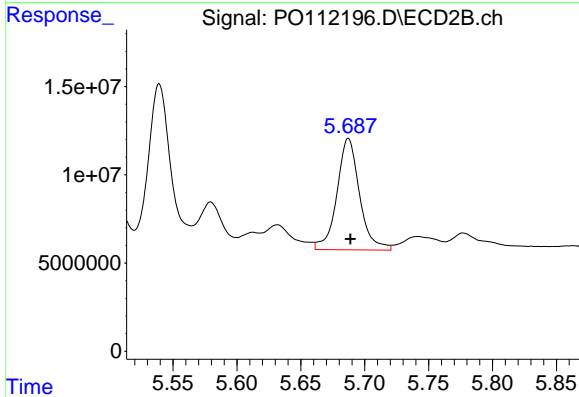




#27 AR-1254-2

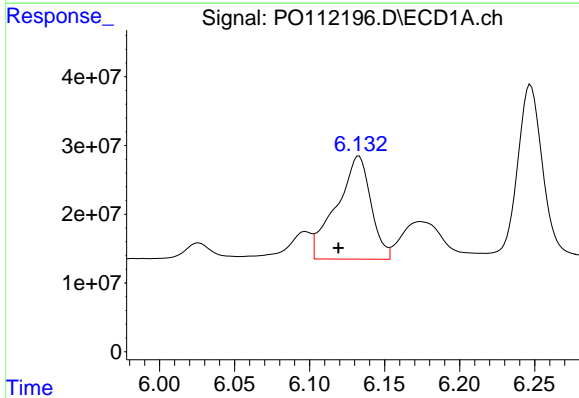
R.T.: 5.713 min  
 Delta R.T.: -0.002 min  
 Response: 106935954  
 Conc: 199.62 ng/ml

Instrument :  
 ECD\_O  
 ClientSampleId :  
 AR1660CCC500



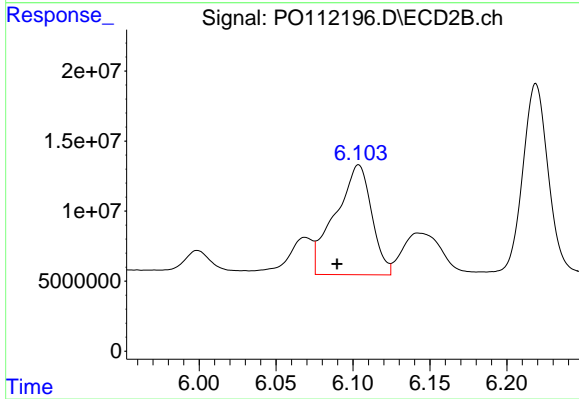
#27 AR-1254-2

R.T.: 5.687 min  
 Delta R.T.: -0.002 min  
 Response: 77902306  
 Conc: 234.78 ng/ml



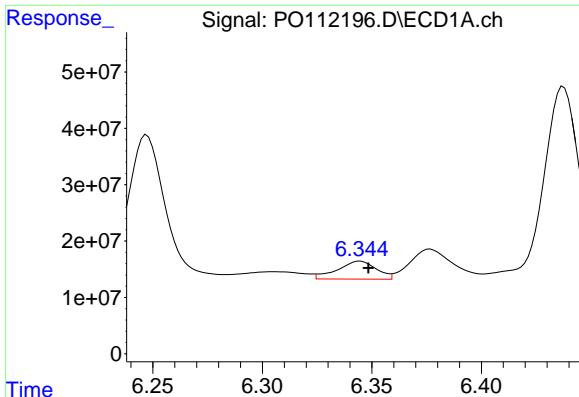
#28 AR-1254-3

R.T.: 6.133 min  
 Delta R.T.: 0.014 min  
 Response: 239331712  
 Conc: 285.06 ng/ml



#28 AR-1254-3

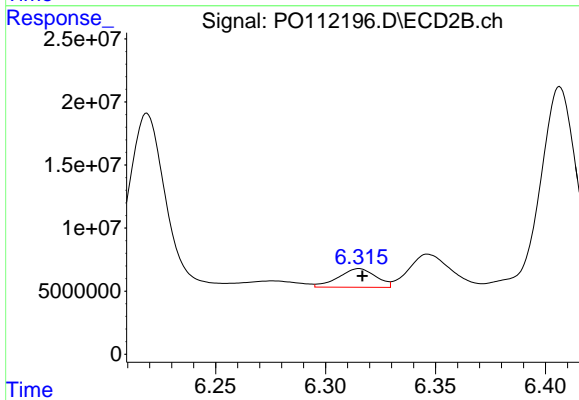
R.T.: 6.104 min  
 Delta R.T.: 0.014 min  
 Response: 128538487  
 Conc: 266.65 ng/ml



#29 AR-1254-4

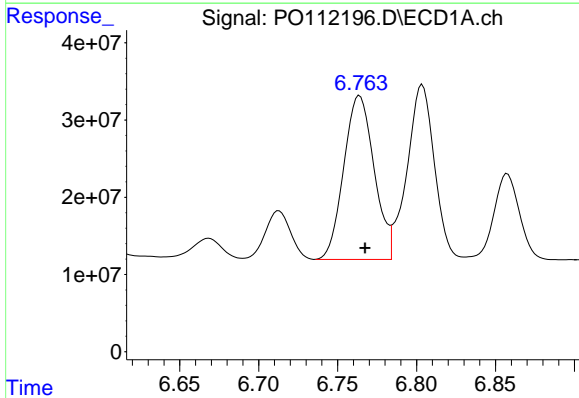
R.T.: 6.345 min  
 Delta R.T.: -0.004 min  
 Response: 39316612  
 Conc: 81.74 ng/ml

Instrument :  
 ECD\_O  
 ClientSampleId :  
 AR1660CCC500



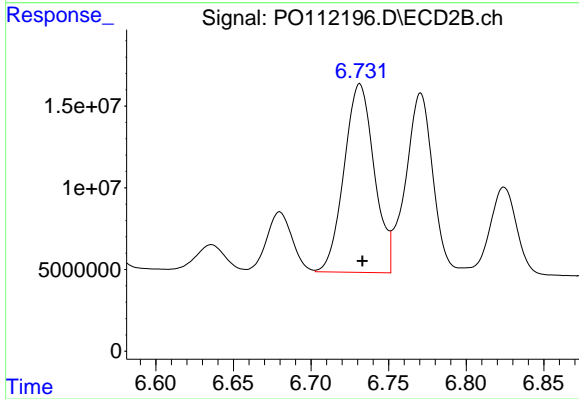
#29 AR-1254-4

R.T.: 6.315 min  
 Delta R.T.: -0.002 min  
 Response: 17414496  
 Conc: 66.80 ng/ml



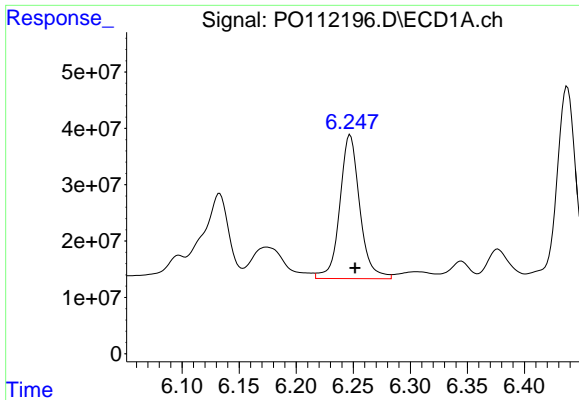
#30 AR-1254-5

R.T.: 6.764 min  
 Delta R.T.: -0.004 min  
 Response: 283805547  
 Conc: 366.70 ng/ml



#30 AR-1254-5

R.T.: 6.731 min  
 Delta R.T.: -0.002 min  
 Response: 155867055  
 Conc: 437.39 ng/ml

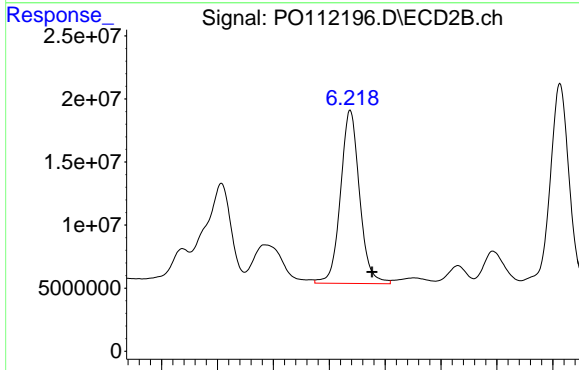


#31 AR-1260-1

R.T.: 6.247 min  
 Delta R.T.: -0.004 min  
 Response: 310563884  
 Conc: 619.59 ng/ml

Instrument :  
 ECD\_O  
 ClientSampleId :  
 AR1660CCC500

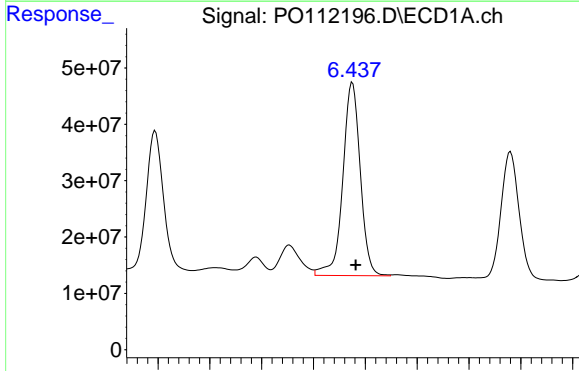
Time



#31 AR-1260-1

R.T.: 6.219 min  
 Delta R.T.: -0.019 min  
 Response: 162527090  
 Conc: 579.29 ng/ml

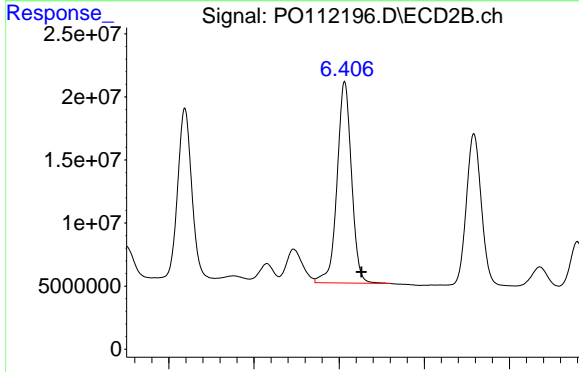
Time



#32 AR-1260-2

R.T.: 6.438 min  
 Delta R.T.: -0.003 min  
 Response: 402208211  
 Conc: 544.90 ng/ml

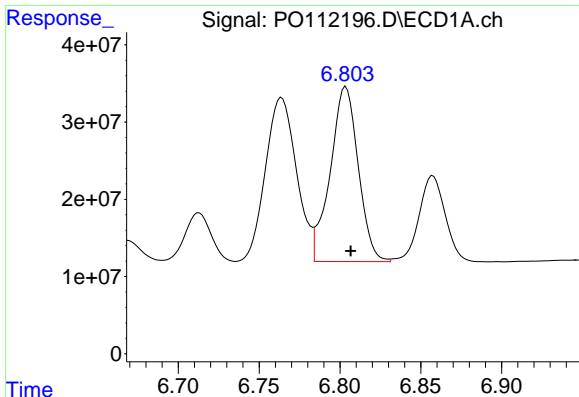
Time



#32 AR-1260-2

R.T.: 6.407 min  
 Delta R.T.: -0.020 min  
 Response: 188180285  
 Conc: 553.48 ng/ml

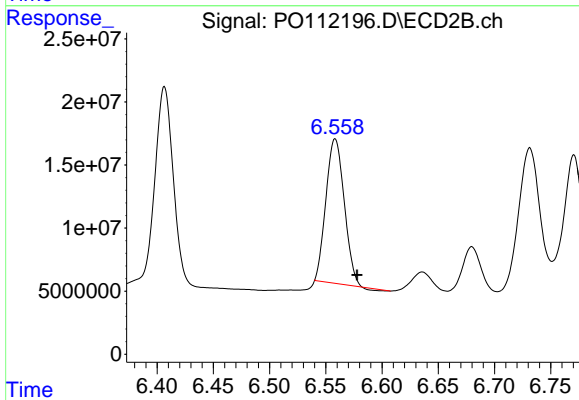
Time



#33 AR-1260-3

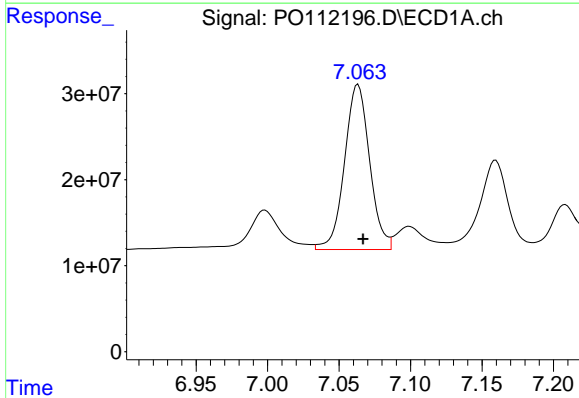
R.T.: 6.804 min  
 Delta R.T.: -0.003 min  
 Response: 273298939  
 Conc: 416.94 ng/ml

Instrument :  
 ECD\_O  
 ClientSampleId :  
 AR1660CCC500



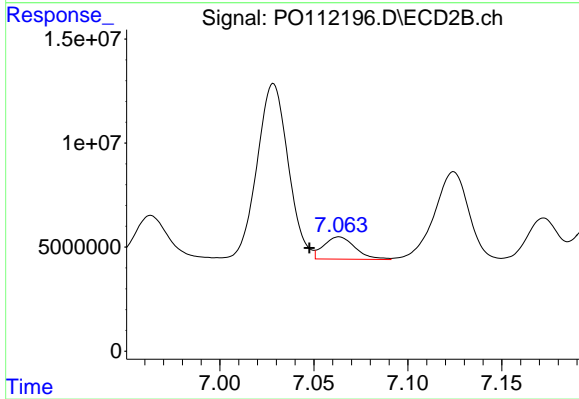
#33 AR-1260-3

R.T.: 6.558 min  
 Delta R.T.: -0.020 min  
 Response: 129298153  
 Conc: 469.18 ng/ml



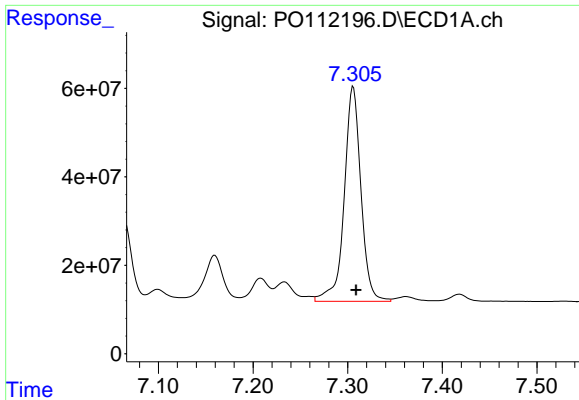
#34 AR-1260-4

R.T.: 7.063 min  
 Delta R.T.: -0.003 min  
 Response: 234982945  
 Conc: 539.88 ng/ml



#34 AR-1260-4

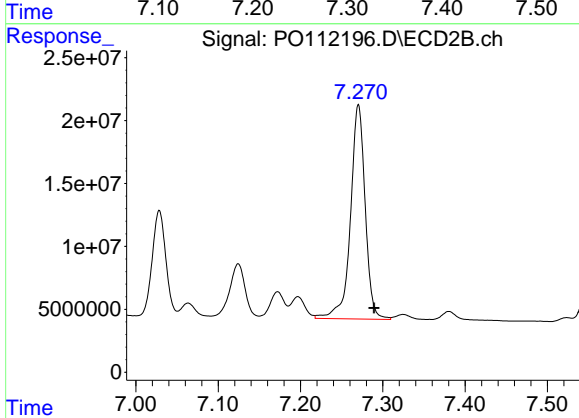
R.T.: 7.063 min  
 Delta R.T.: 0.016 min  
 Response: 12520228  
 Conc: 62.40 ng/ml



#35 AR-1260-5

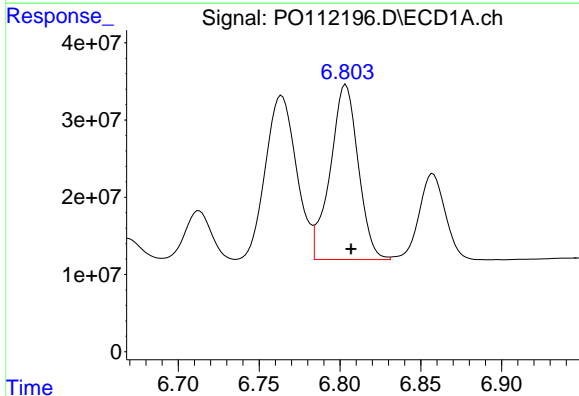
R.T.: 7.306 min  
 Delta R.T.: -0.003 min  
 Response: 597224387  
 Conc: 473.04 ng/ml

Instrument :  
 ECD\_O  
 ClientSampleId :  
 AR1660CCC500



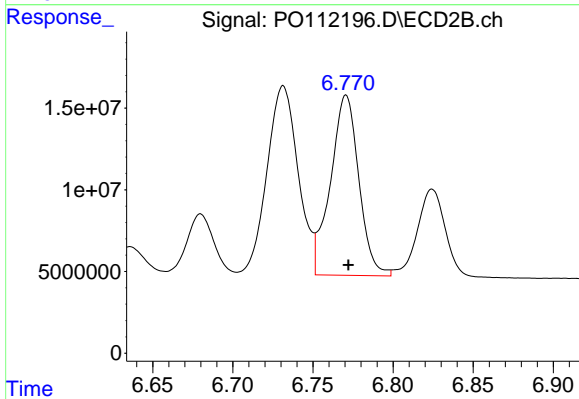
#35 AR-1260-5

R.T.: 7.270 min  
 Delta R.T.: -0.019 min  
 Response: 211689646  
 Conc: 472.81 ng/ml



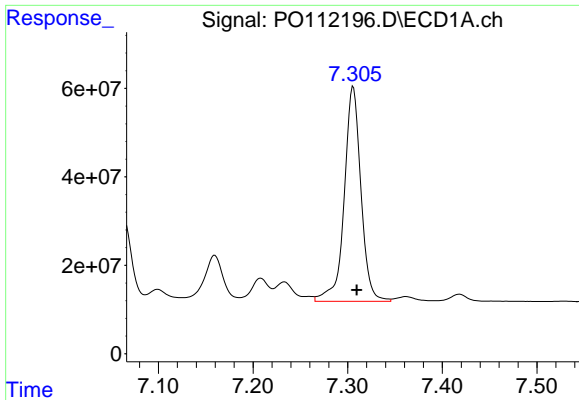
#36 AR-1262-1

R.T.: 6.804 min  
 Delta R.T.: -0.003 min  
 Response: 273298939  
 Conc: 267.50 ng/ml



#36 AR-1262-1

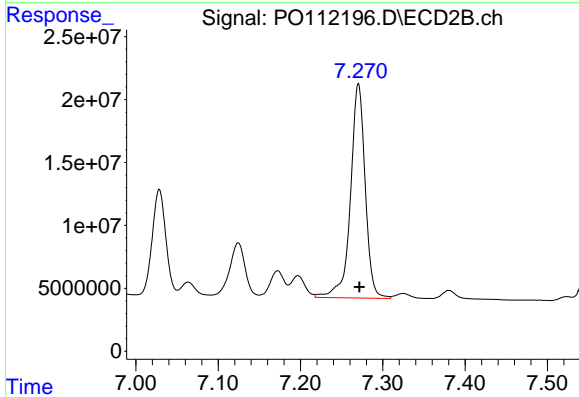
R.T.: 6.771 min  
 Delta R.T.: -0.001 min  
 Response: 135941090  
 Conc: 333.74 ng/ml



#37 AR-1262-2

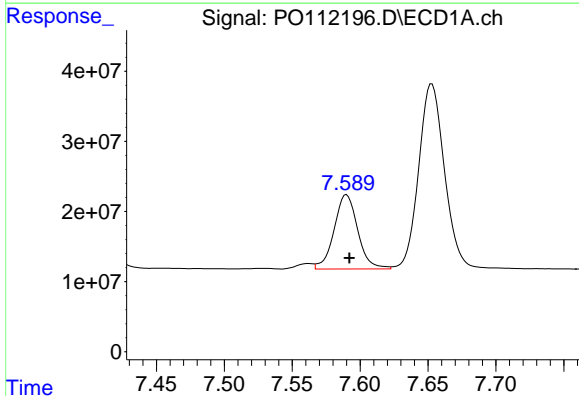
R.T.: 7.306 min  
 Delta R.T.: -0.004 min  
 Response: 597224387  
 Conc: 364.30 ng/ml

Instrument :  
 ECD\_O  
 ClientSampleId :  
 AR1660CCC500



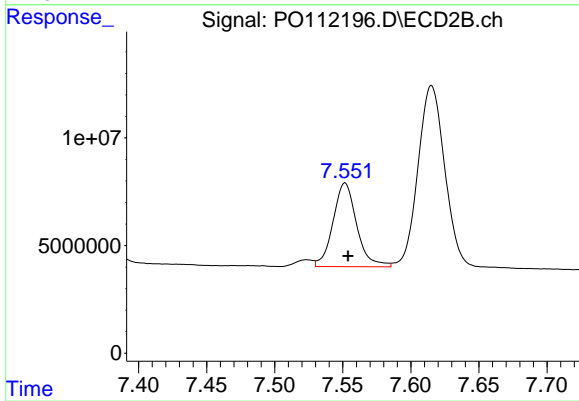
#37 AR-1262-2

R.T.: 7.270 min  
 Delta R.T.: -0.001 min  
 Response: 211689646  
 Conc: 413.01 ng/ml



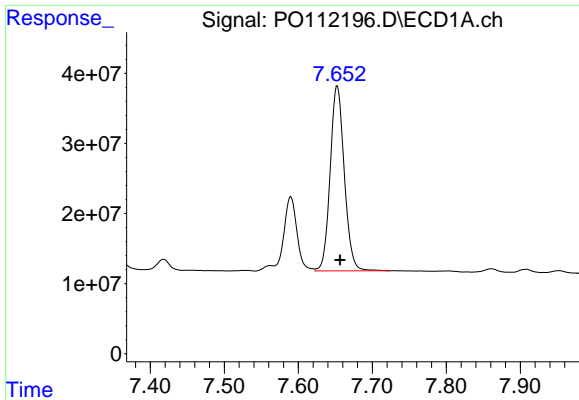
#38 AR-1262-3

R.T.: 7.590 min  
 Delta R.T.: -0.002 min  
 Response: 128350047  
 Conc: 199.93 ng/ml



#38 AR-1262-3

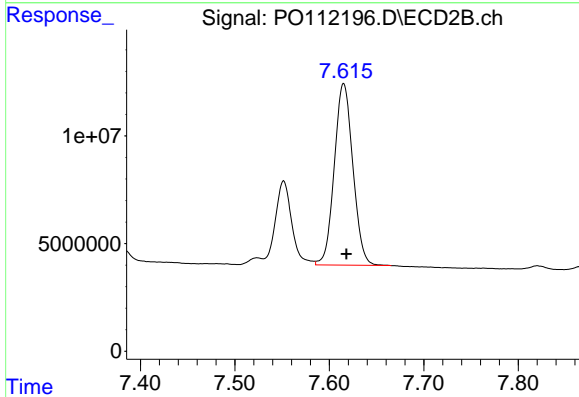
R.T.: 7.552 min  
 Delta R.T.: -0.002 min  
 Response: 47105223  
 Conc: 262.39 ng/ml



#39 AR-1262-4

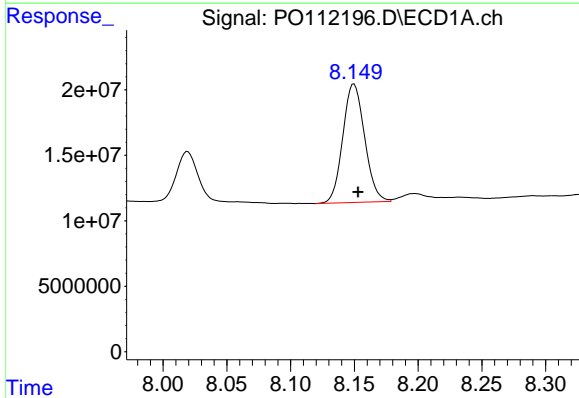
R.T.: 7.653 min  
 Delta R.T.: -0.004 min  
 Response: 350199340  
 Conc: 326.85 ng/ml

Instrument :  
 ECD\_O  
 ClientSampleId :  
 AR1660CCC500



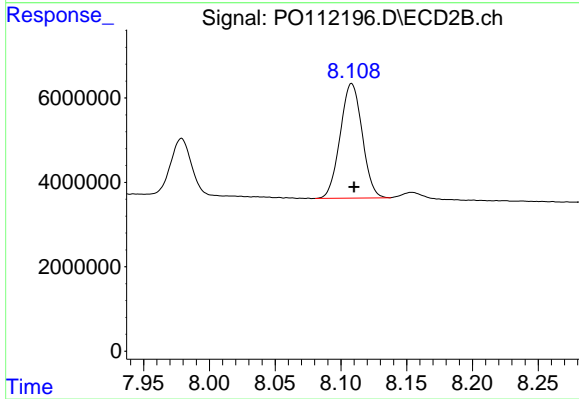
#39 AR-1262-4

R.T.: 7.615 min  
 Delta R.T.: -0.003 min  
 Response: 115575892  
 Conc: 397.28 ng/ml



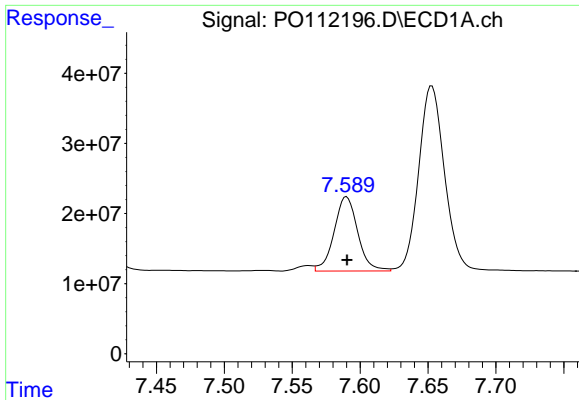
#40 AR-1262-5

R.T.: 8.150 min  
 Delta R.T.: -0.003 min  
 Response: 107911185  
 Conc: 240.80 ng/ml



#40 AR-1262-5

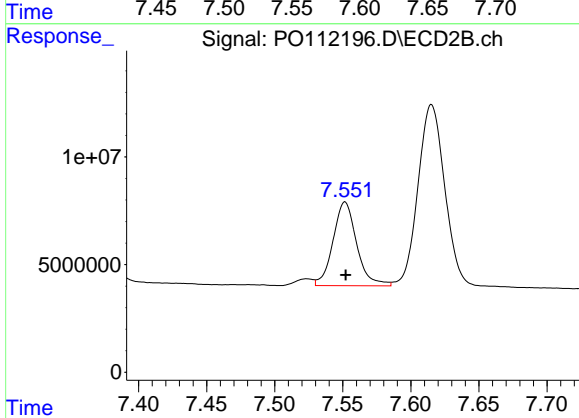
R.T.: 8.108 min  
 Delta R.T.: -0.002 min  
 Response: 31613080  
 Conc: 298.85 ng/ml



#41 AR-1268-1

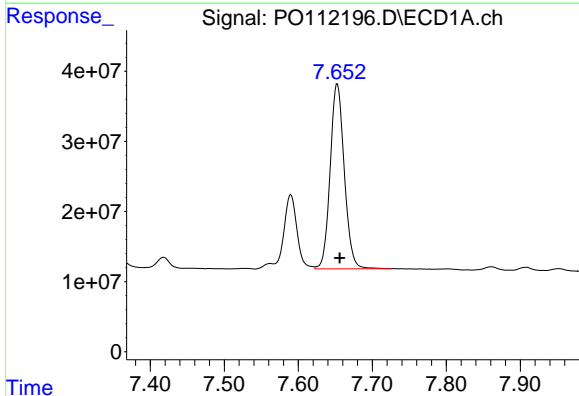
R.T.: 7.590 min  
 Delta R.T.: 0.000 min  
 Response: 128350047  
 Conc: 69.85 ng/ml

Instrument :  
 ECD\_O  
 ClientSampleId :  
 AR1660CCC500



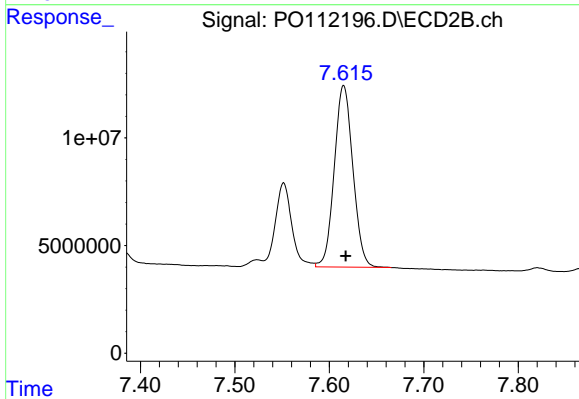
#41 AR-1268-1

R.T.: 7.552 min  
 Delta R.T.: 0.000 min  
 Response: 47105223  
 Conc: 95.85 ng/ml



#42 AR-1268-2

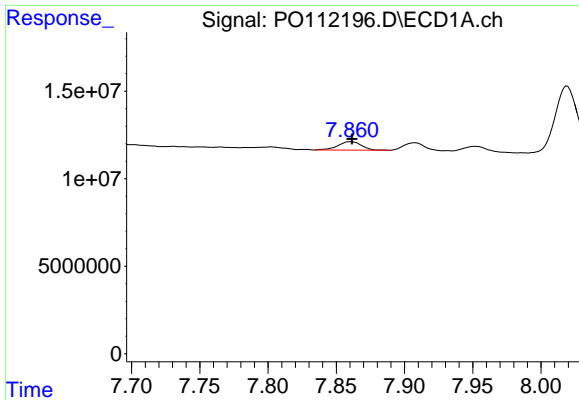
R.T.: 7.653 min  
 Delta R.T.: -0.003 min  
 Response: 350199340  
 Conc: 224.83 ng/ml



#42 AR-1268-2

R.T.: 7.615 min  
 Delta R.T.: -0.002 min  
 Response: 115575892  
 Conc: 277.04 ng/ml

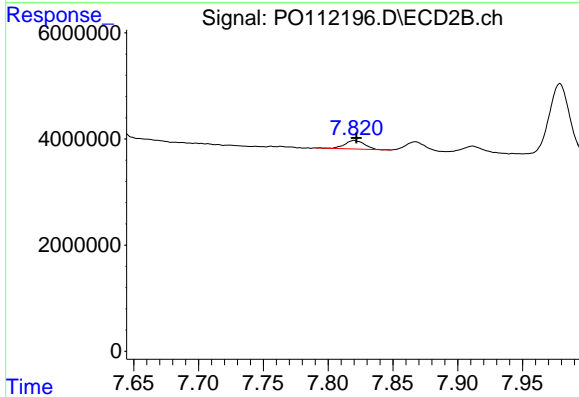




#43 AR-1268-3

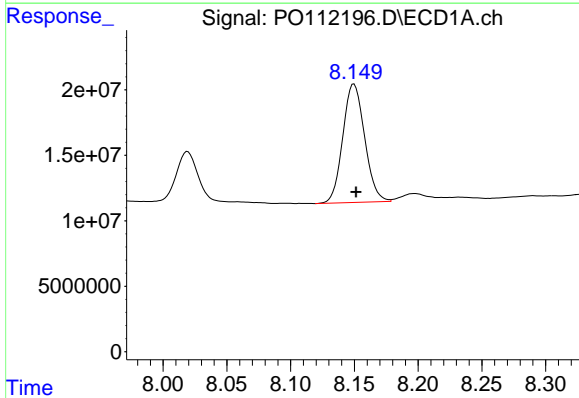
R.T.: 7.861 min  
 Delta R.T.: -0.001 min  
 Response: 5686158  
 Conc: 4.38 ng/ml

Instrument :  
 ECD\_O  
 ClientSampleId :  
 AR1660CCC500



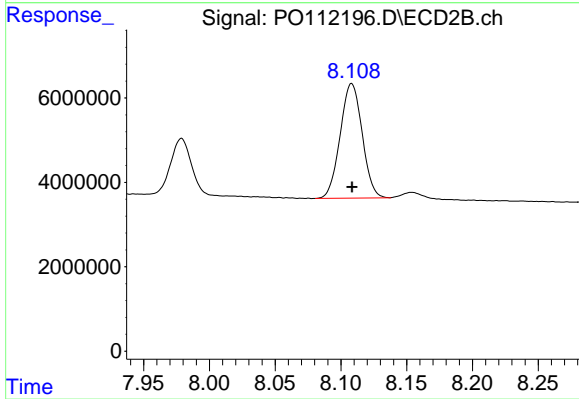
#43 AR-1268-3

R.T.: 7.820 min  
 Delta R.T.: -0.002 min  
 Response: 1697196  
 Conc: 5.36 ng/ml



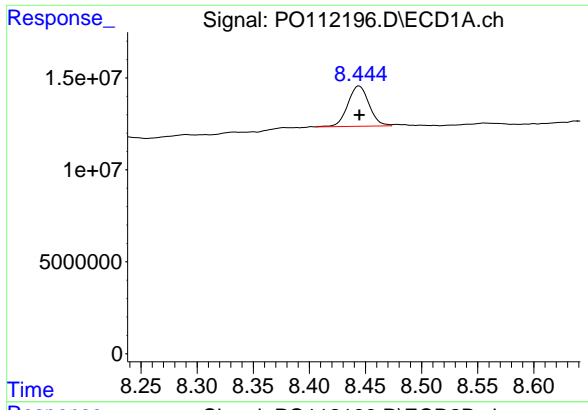
#44 AR-1268-4

R.T.: 8.150 min  
 Delta R.T.: -0.001 min  
 Response: 107911185  
 Conc: 224.62 ng/ml



#44 AR-1268-4

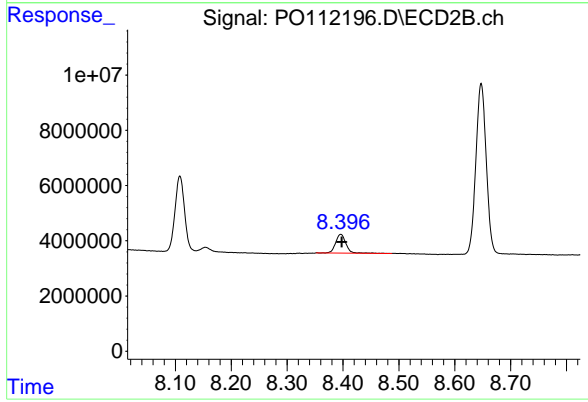
R.T.: 8.108 min  
 Delta R.T.: 0.000 min  
 Response: 31613080  
 Conc: 283.49 ng/ml



#45 AR-1268-5

R.T.: 8.444 min  
 Delta R.T.: 0.000 min  
 Response: 28860238  
 Conc: 8.84 ng/ml

Instrument :  
 ECD\_O  
 ClientSampleId :  
 AR1660CCC500



#45 AR-1268-5

R.T.: 8.396 min  
 Delta R.T.: -0.002 min  
 Response: 8543088  
 Conc: 11.76 ng/ml