

Data Path : Z:\pestpcbsrv\HPCHEM1\ECD_0\Data\P0071025\
 Data File : PO112197.D
 Signal(s) : Signal #1: ECD1A.ch Signal #2: ECD2B.ch
 Acq On : 10 Jul 2025 18:11
 Operator : YP/AJ
 Sample : AR1242CCC500
 Misc :
 ALS Vial : 4 Sample Multiplier: 1

Instrument :
 ECD_0
 ClientSampleId :
 AR1242CCC500

Integration File signal 1: autoint1.e
 Integration File signal 2: autoint2.e
 Quant Time: Jul 10 22:54:33 2025
 Quant Method : Z:\pestpcbsrv\HPCHEM1\ECD_0\methods\P0070825.M
 Quant Title : GC EXTRACTABLES
 QLast Update : Wed Jul 09 10:50:50 2025
 Response via : Initial Calibration
 Integrator: ChemStation

Volume Inj. : 2 µl
 Signal #1 Phase : ZB-MR1 Signal #2 Phase: ZB-MR2
 Signal #1 Info : 30Mx0.32mmx 0.50µ Signal #2 Info : 30M x 0.32mm x 0.25µm

Compound	RT#1	RT#2	Resp#1	Resp#2	ng/ml	ng/ml
System Monitoring Compounds						
1) SA Tetrachlo...	3.673	3.666	505.0E6	308.7E6	51.033	48.450
2) SA Decachlor...	8.702	8.648	287.9E6	79851640	42.115	46.332
Target Compounds						
3) L1 AR-1016-1	4.760	4.760	141.3E6	131.4E6	415.329	589.713 #
4) L1 AR-1016-2	4.779	4.792	209.0E6	9324630	420.352	28.334 #
5) L1 AR-1016-3	4.836	4.935	129.4E6	68555307	399.785	403.583
6) L1 AR-1016-4	4.956	4.978	106.1E6	51094668	413.048	372.335
7) L1 AR-1016-5	5.212	5.190	115.0E6	71965197	420.186	417.310
8) L2 AR-1221-1	3.883	3.874	13302556	9614700	114.073	116.832
9) L2 AR-1221-2	3.971	3.961	19600753	14043701	248.613	236.611
10) L2 AR-1221-3	4.046	4.035	72290842	50240333	268.159	266.136
11) L3 AR-1232-1	4.046	4.035	72290842	50240333	336.757	334.714
12) L3 AR-1232-2	4.538	4.760	105.4E6	131.4E6	927.907	858.397
13) L3 AR-1232-3	4.779	4.935	209.0E6	68555307	912.793	907.945
14) L3 AR-1232-4	4.956	5.019	106.1E6	65113813	928.029	986.749
15) L3 AR-1232-5	4.998	5.190	75700282	71965197	1031.336	969.099
16) L4 AR-1242-1	4.760	4.742	141.3E6	89411044	487.725	461.218
17) L4 AR-1242-2	4.779	4.760	209.0E6	131.4E6	490.791	463.763
18) L4 AR-1242-3	4.836	4.935	129.4E6	68555307	472.863	470.597
19) L4 AR-1242-4	4.956	5.019	106.1E6	65113813	470.759	459.063
20) L4 AR-1242-5	5.606	5.539	116.5E6	86744685	550.340	477.316
21) L5 AR-1248-1	4.760	4.742	141.3E6	89411044	622.579	579.206
22) L5 AR-1248-2	4.998	4.978	75700282	51094668	245.521	248.312
23) L5 AR-1248-3	5.212	5.019	115.0E6	65113813	282.306	303.139
24) L5 AR-1248-4	5.565	5.190	139.6E6	71965197	241.879	278.151
25) L5 AR-1248-5	5.606	5.580	116.5E6	73293984	298.462	292.533
26) L6 AR-1254-1	5.565	5.539	139.6E6	86744685	226.949	227.576
27) L6 AR-1254-2	5.715	5.687	45364082	28880813	84.684	87.040
28) L6 AR-1254-3	6.119	6.088	32505079	30487431	38.716	63.246 #
29) L6 AR-1254-4	6.348	6.317	28339316	16713572	58.915	64.112
30) L6 AR-1254-5	6.766	6.732	25310657	5276550	32.703	14.807 #
31) L7 AR-1260-1	6.263	6.232	10568964	9154431	21.086	32.629 #
32) L7 AR-1260-2	6.440	6.406	4764330	2252193	6.455	6.624
33) L7 AR-1260-3	6.838	6.556	10965563	2821256	16.729	10.237 #
34) L7 AR-1260-4	7.071	7.065	143444	1027899	0.330	5.123 #
35) L7 AR-1260-5	7.310	7.267	3889456	3761857	3.081	8.402 #
36) L8 AR-1262-1	6.838	6.798	10965563	1701330	10.733	4.177 #
37) L8 AR-1262-2	7.310	7.267	3889456	3761857	2.373	7.340 #
38) L8 AR-1262-3	7.535f	7.555	-542393	1184774	N.D.	6.600 #
39) L8 AR-1262-4	0.000	7.568f	0	1628526	N.D.	5.598 #
40) L8 AR-1262-5	8.160	8.111	2109135	60086	4.706	0.568 #
41) L9 AR-1268-1	7.535f	7.555	-542393	1184774	N.D.	2.411 #

Data Path : Z:\pestpcbsrv\HPCHEM1\ECD_0\Data\P0071025\
 Data File : P0112197.D
 Signal(s) : Signal #1: ECD1A.ch Signal #2: ECD2B.ch
 Acq On : 10 Jul 2025 18:11
 Operator : YP/AJ
 Sample : AR1242CCC500
 Misc :
 ALS Vial : 4 Sample Multiplier: 1

Instrument :
 ECD_0
 ClientSampleId :
 AR1242CCC500

Integration File signal 1: autoint1.e
 Integration File signal 2: autoint2.e
 Quant Time: Jul 10 22:54:33 2025
 Quant Method : Z:\pestpcbsrv\HPCHEM1\ECD_0\methods\P0070825.M
 Quant Title : GC EXTRACTABLES
 QLast Update : Wed Jul 09 10:50:50 2025
 Response via : Initial Calibration
 Integrator: ChemStation

Volume Inj. : 2 µl
 Signal #1 Phase : ZB-MR1 Signal #2 Phase: ZB-MR2
 Signal #1 Info : 30Mx0.32mmx 0.50µ Signal #2 Info : 30M x 0.32mm x 0.25µm

	Compound	RT#1	RT#2	Resp#1	Resp#2	ng/ml	ng/ml
42)	L9 AR-1268-2	0.000	7.568f	0	1628526	N.D.	3.904 #
43)	L9 AR-1268-3	7.860	7.815	1534397	480662	1.181	1.519 #
44)	L9 AR-1268-4	8.160	8.111	2109135	60086	4.390	0.539 #
45)	L9 AR-1268-5	8.449	8.395	2279454	533084	0.698	0.734

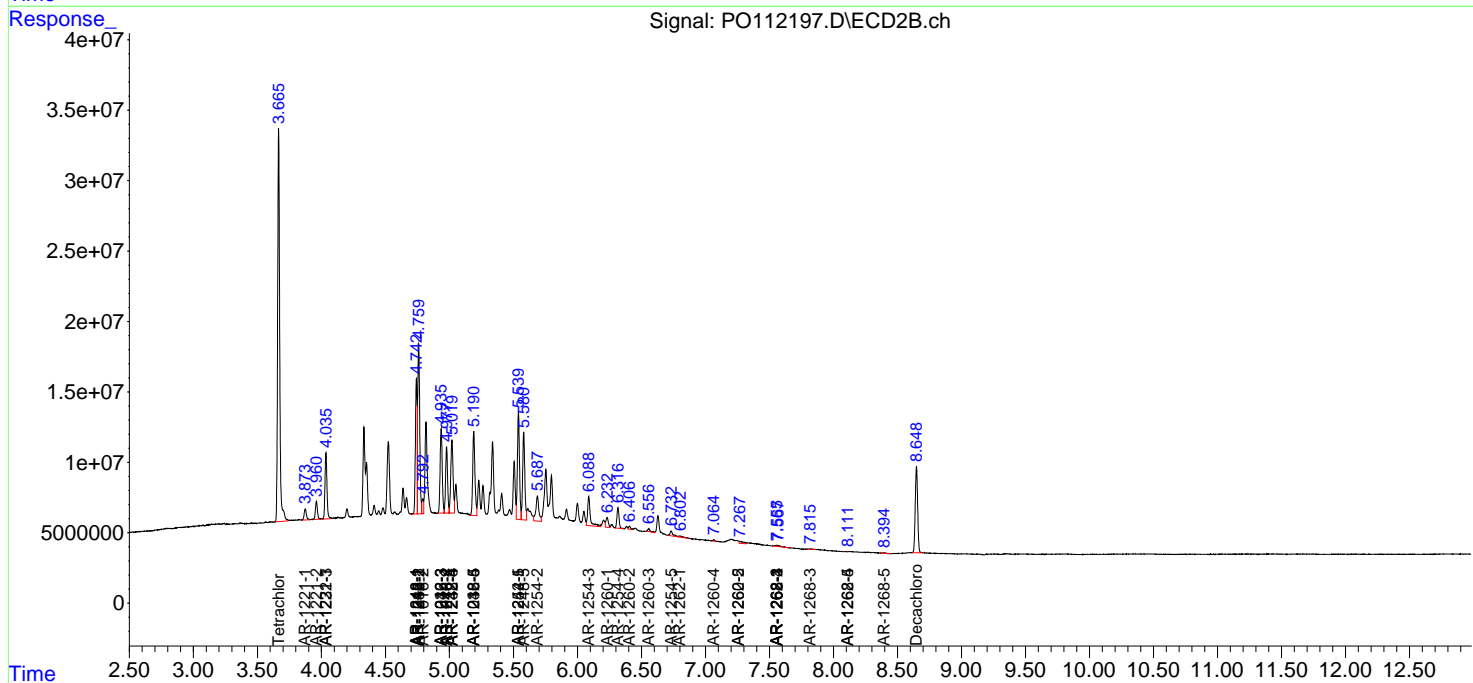
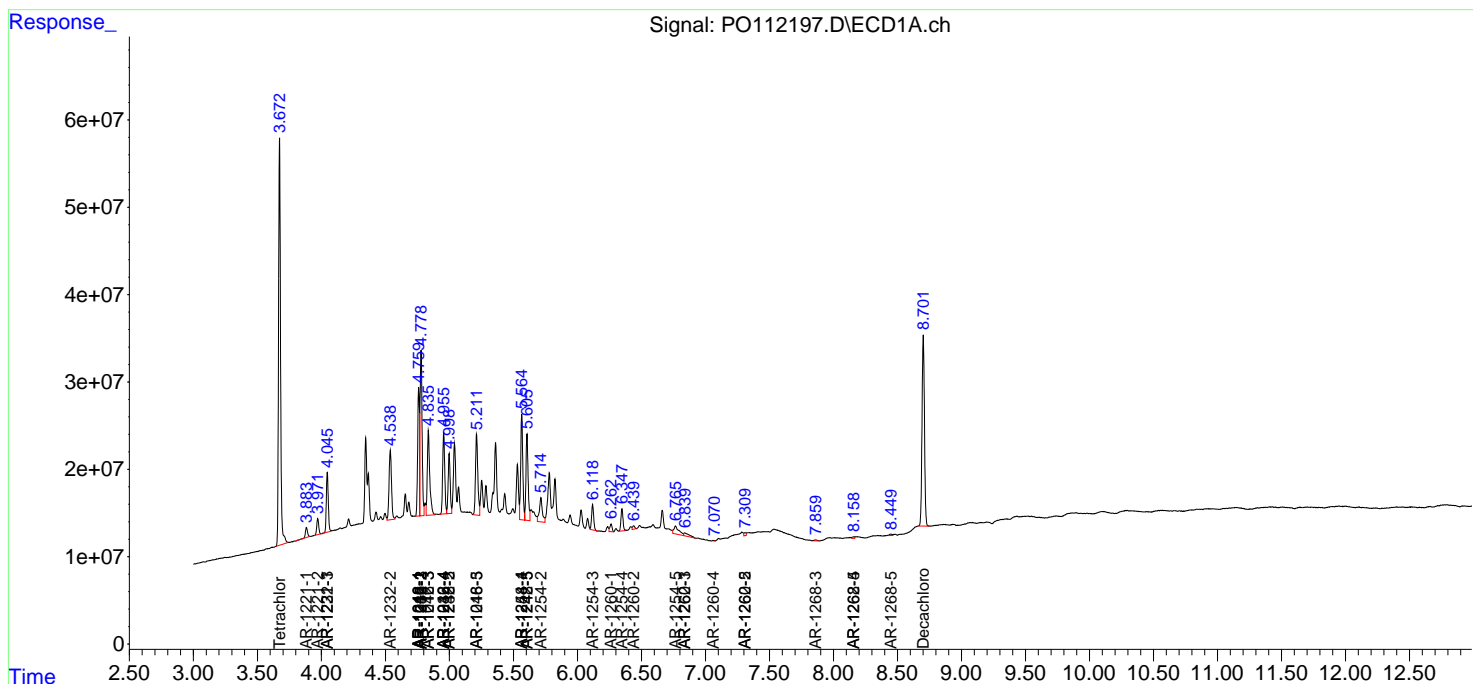
(f)=RT Delta > 1/2 Window (#)=Amounts differ by > 25% (m)=manual int.

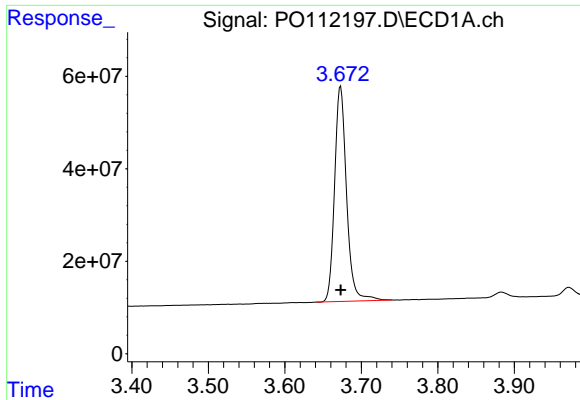
Data Path : Z:\pestpcbsrv\HPCHEM1\ECD_O\Data\P0071025\
 Data File : P0112197.D
 Signal(s) : Signal #1: ECD1A.ch Signal #2: ECD2B.ch
 Acq On : 10 Jul 2025 18:11
 Operator : YP/AJ
 Sample : AR1242CCC500
 Misc :
 ALS Vial : 4 Sample Multiplier: 1

Instrument :
 ECD_O
 ClientSampleId :
 AR1242CCC500

Integration File signal 1: autoint1.e
 Integration File signal 2: autoint2.e
 Quant Time: Jul 10 22:54:33 2025
 Quant Method : Z:\pestpcbsrv\HPCHEM1\ECD_O\methods\P0070825.M
 Quant Title : GC EXTRACTABLES
 QLast Update : Wed Jul 09 10:50:50 2025
 Response via : Initial Calibration
 Integrator: ChemStation

Volume Inj. : 2 µl
 Signal #1 Phase : ZB-MR1 Signal #2 Phase: ZB-MR2
 Signal #1 Info : 30Mx0.32mmx 0.50µ Signal #2 Info : 30M x 0.32mm x 0.25µm

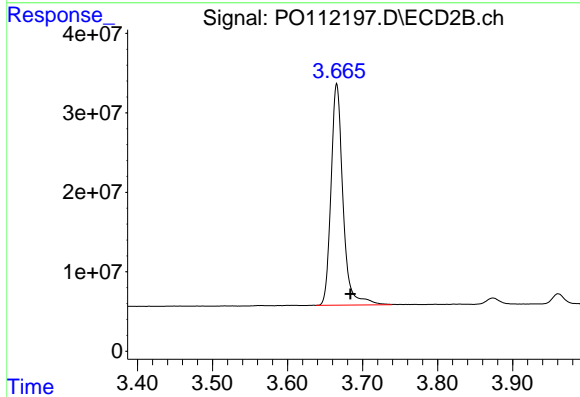




#1 Tetrachloro-m-xylene

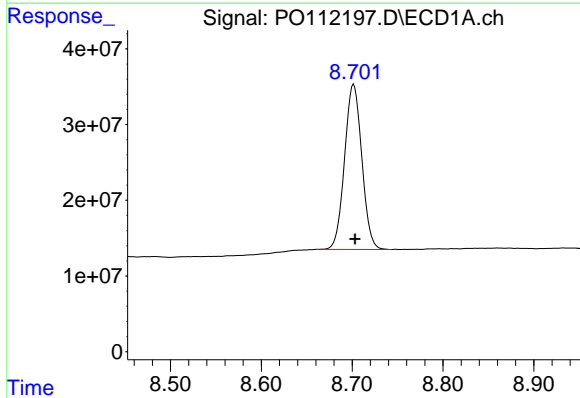
R.T.: 3.673 min
 Delta R.T.: 0.000 min
 Response: 504953763
 Conc: 51.03 ng/ml

Instrument :
 ECD_O
 ClientSampleId :
 AR1242CCC500



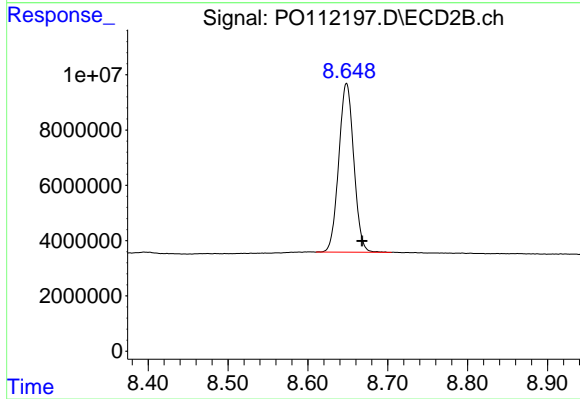
#1 Tetrachloro-m-xylene

R.T.: 3.666 min
 Delta R.T.: -0.018 min
 Response: 308677246
 Conc: 48.45 ng/ml



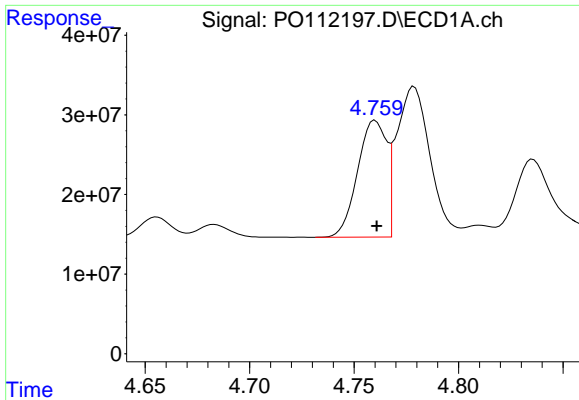
#2 Decachlorobiphenyl

R.T.: 8.702 min
 Delta R.T.: -0.002 min
 Response: 287942963
 Conc: 42.12 ng/ml



#2 Decachlorobiphenyl

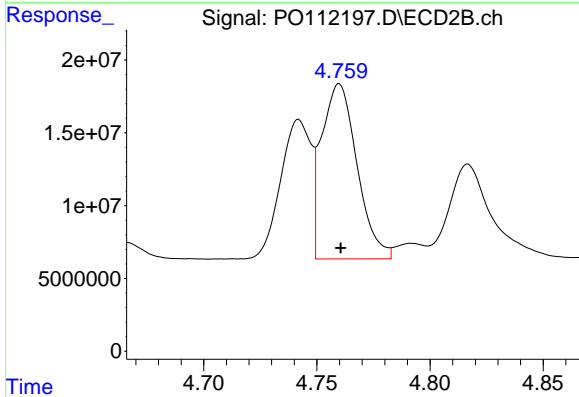
R.T.: 8.648 min
 Delta R.T.: -0.019 min
 Response: 79851640
 Conc: 46.33 ng/ml



#3 AR-1016-1

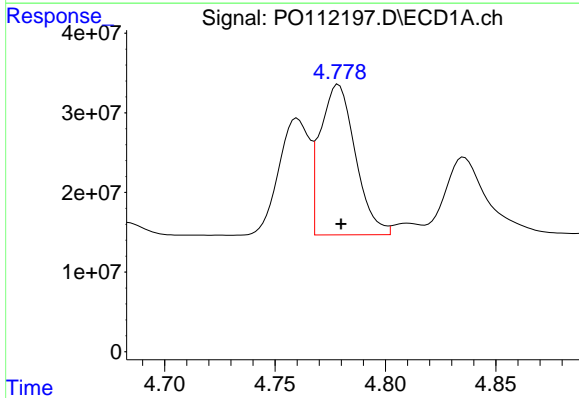
R.T.: 4.760 min
 Delta R.T.: 0.000 min
 Response: 141262936
 Conc: 415.33 ng/ml

Instrument :
 ECD_O
 ClientSampleId :
 AR1242CCC500



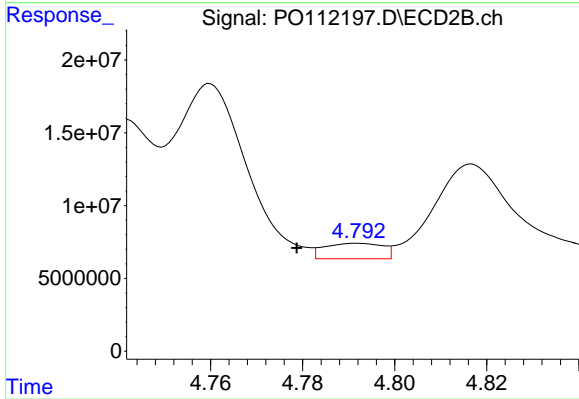
#3 AR-1016-1

R.T.: 4.760 min
 Delta R.T.: 0.000 min
 Response: 131408287
 Conc: 589.71 ng/ml



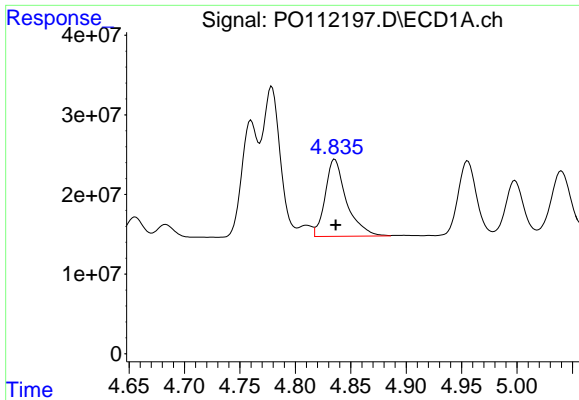
#4 AR-1016-2

R.T.: 4.779 min
 Delta R.T.: -0.001 min
 Response: 209037631
 Conc: 420.35 ng/ml



#4 AR-1016-2

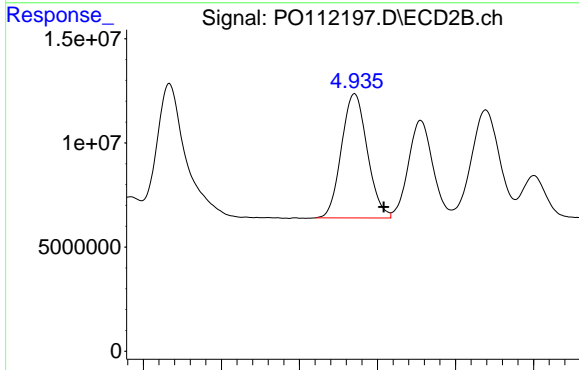
R.T.: 4.792 min
 Delta R.T.: 0.013 min
 Response: 9324630
 Conc: 28.33 ng/ml



#5 AR-1016-3

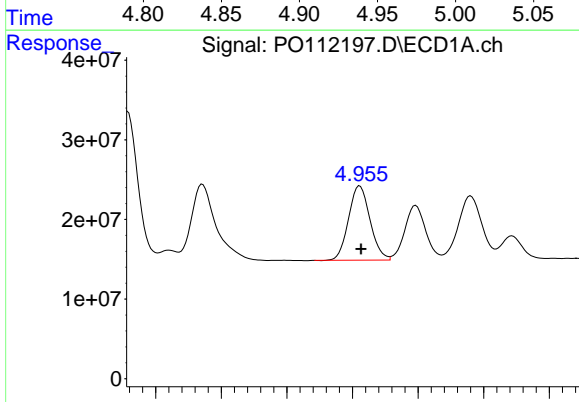
R.T.: 4.836 min
 Delta R.T.: 0.000 min
 Response: 129415875
 Conc: 399.78 ng/ml

Instrument :
 ECD_O
 ClientSampleId :
 AR1242CCC500



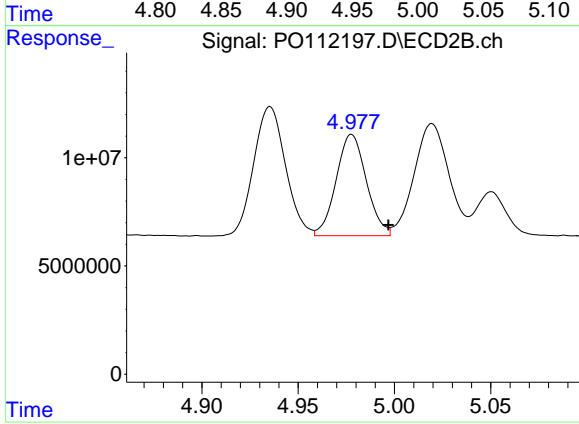
#5 AR-1016-3

R.T.: 4.935 min
 Delta R.T.: -0.019 min
 Response: 68555307
 Conc: 403.58 ng/ml



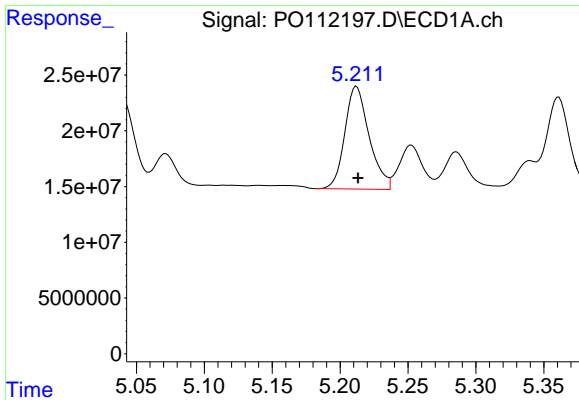
#6 AR-1016-4

R.T.: 4.956 min
 Delta R.T.: 0.000 min
 Response: 106070598
 Conc: 413.05 ng/ml



#6 AR-1016-4

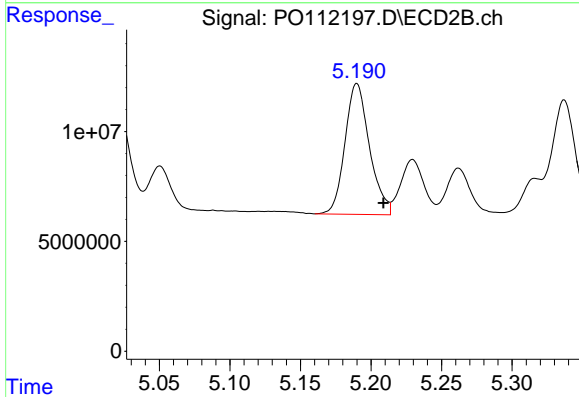
R.T.: 4.978 min
 Delta R.T.: -0.019 min
 Response: 51094668
 Conc: 372.34 ng/ml



#7 AR-1016-5

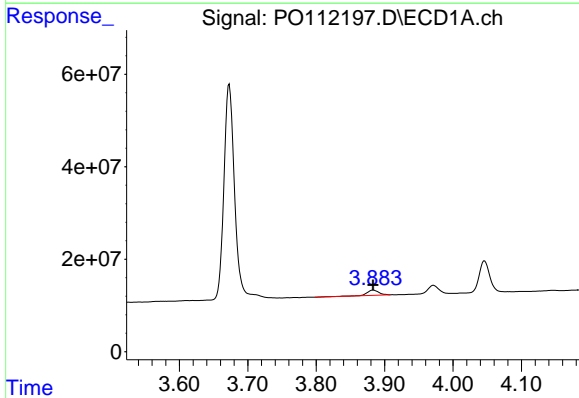
R.T.: 5.212 min
 Delta R.T.: -0.001 min
 Response: 114988812
 Conc: 420.19 ng/ml

Instrument :
 ECD_O
 ClientSampleId :
 AR1242CCC500



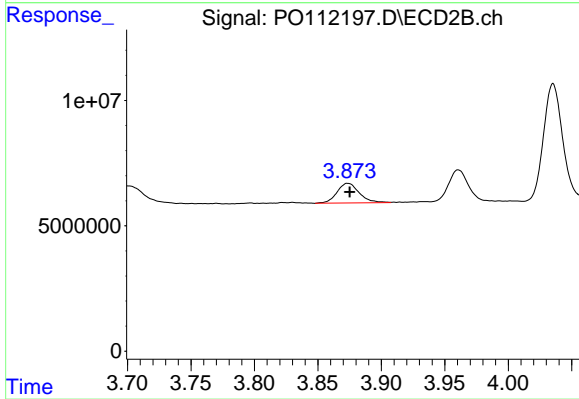
#7 AR-1016-5

R.T.: 5.190 min
 Delta R.T.: -0.019 min
 Response: 71965197
 Conc: 417.31 ng/ml



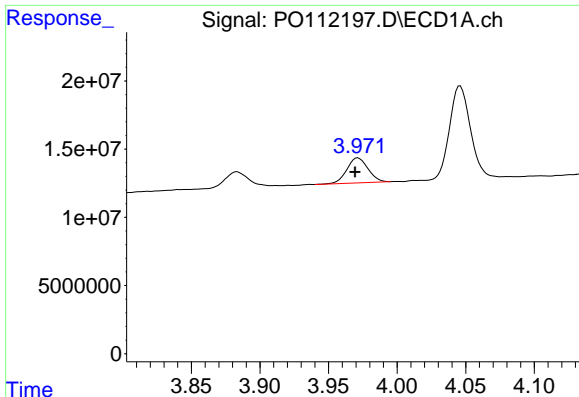
#8 AR-1221-1

R.T.: 3.883 min
 Delta R.T.: 0.000 min
 Response: 13302556
 Conc: 114.07 ng/ml



#8 AR-1221-1

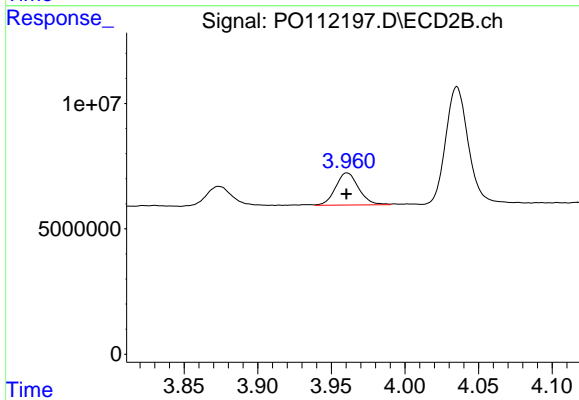
R.T.: 3.874 min
 Delta R.T.: -0.002 min
 Response: 9614700
 Conc: 116.83 ng/ml



#9 AR-1221-2

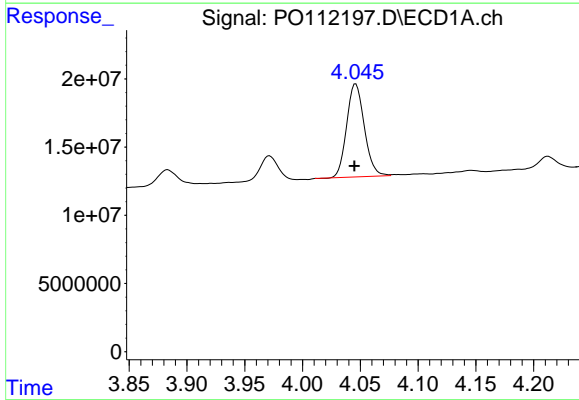
R.T.: 3.971 min
 Delta R.T.: 0.002 min
 Response: 19600753
 Conc: 248.61 ng/ml

Instrument :
 ECD_O
 ClientSampleId :
 AR1242CCC500



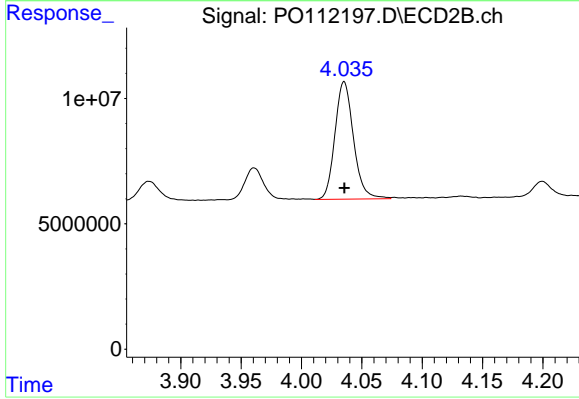
#9 AR-1221-2

R.T.: 3.961 min
 Delta R.T.: 0.000 min
 Response: 14043701
 Conc: 236.61 ng/ml



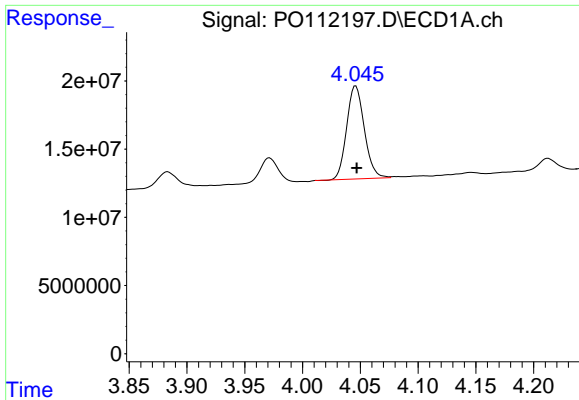
#10 AR-1221-3

R.T.: 4.046 min
 Delta R.T.: 0.001 min
 Response: 72290842
 Conc: 268.16 ng/ml



#10 AR-1221-3

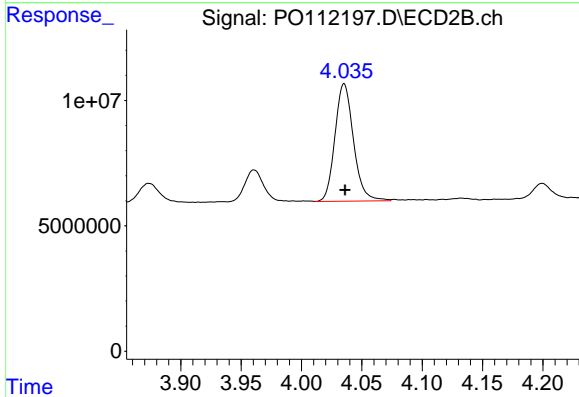
R.T.: 4.035 min
 Delta R.T.: 0.000 min
 Response: 50240333
 Conc: 266.14 ng/ml



#11 AR-1232-1

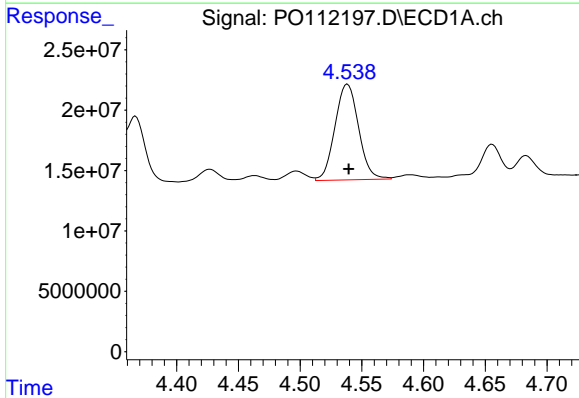
R.T.: 4.046 min
 Delta R.T.: -0.001 min
 Response: 72290842
 Conc: 336.76 ng/ml

Instrument :
 ECD_O
 ClientSampleId :
 AR1242CCC500



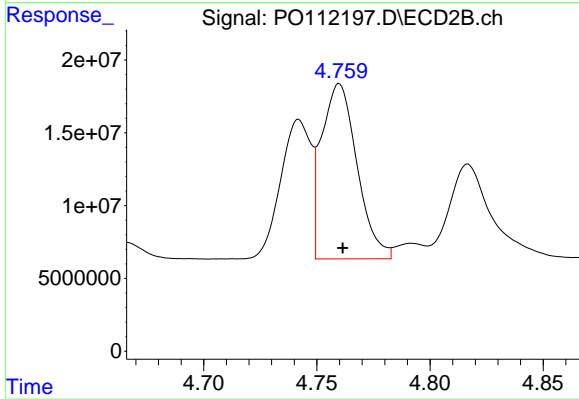
#11 AR-1232-1

R.T.: 4.035 min
 Delta R.T.: 0.000 min
 Response: 50240333
 Conc: 334.71 ng/ml



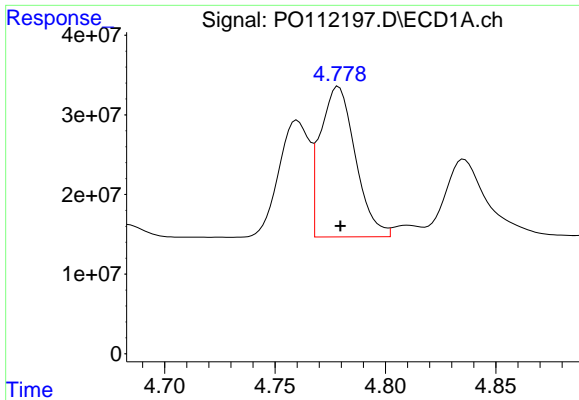
#12 AR-1232-2

R.T.: 4.538 min
 Delta R.T.: 0.000 min
 Response: 105444574
 Conc: 927.91 ng/ml



#12 AR-1232-2

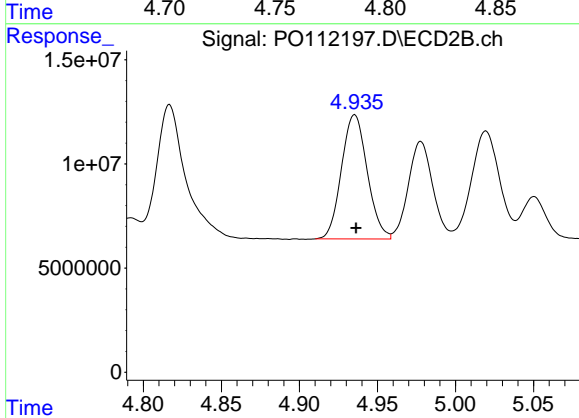
R.T.: 4.760 min
 Delta R.T.: -0.001 min
 Response: 131408287
 Conc: 858.40 ng/ml



#13 AR-1232-3

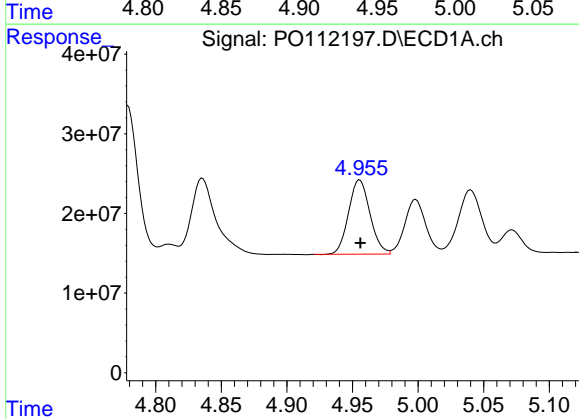
R.T.: 4.779 min
 Delta R.T.: 0.000 min
 Response: 209037631
 Conc: 912.79 ng/ml

Instrument :
 ECD_O
 ClientSampleId :
 AR1242CCC500



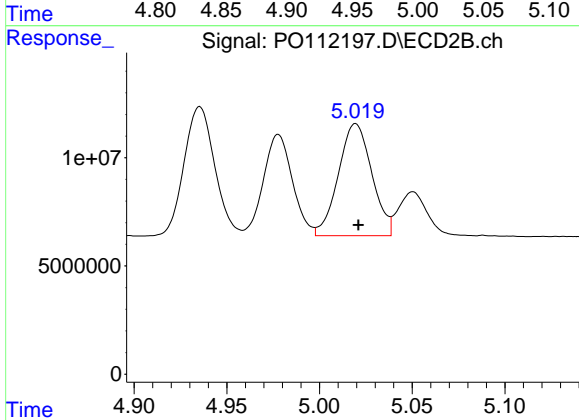
#13 AR-1232-3

R.T.: 4.935 min
 Delta R.T.: 0.000 min
 Response: 68555307
 Conc: 907.94 ng/ml



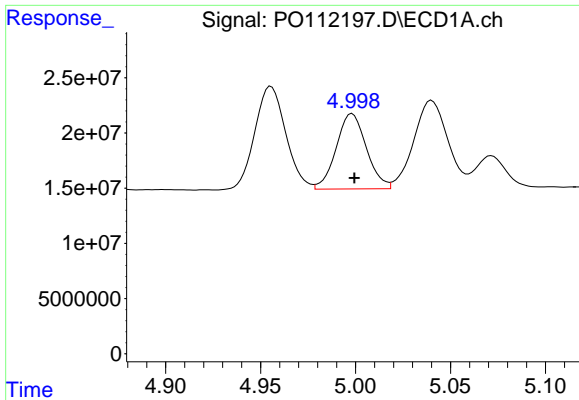
#14 AR-1232-4

R.T.: 4.956 min
 Delta R.T.: 0.000 min
 Response: 106070598
 Conc: 928.03 ng/ml



#14 AR-1232-4

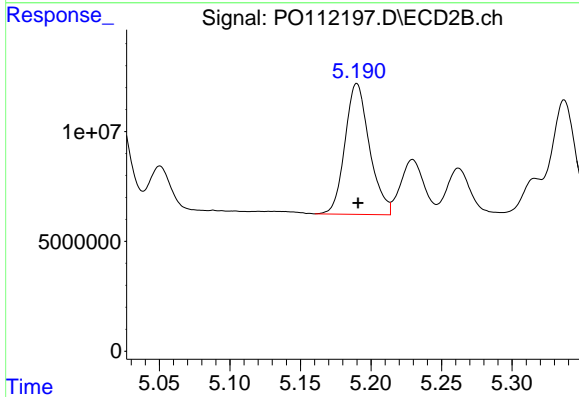
R.T.: 5.019 min
 Delta R.T.: -0.001 min
 Response: 65113813
 Conc: 986.75 ng/ml



#15 AR-1232-5

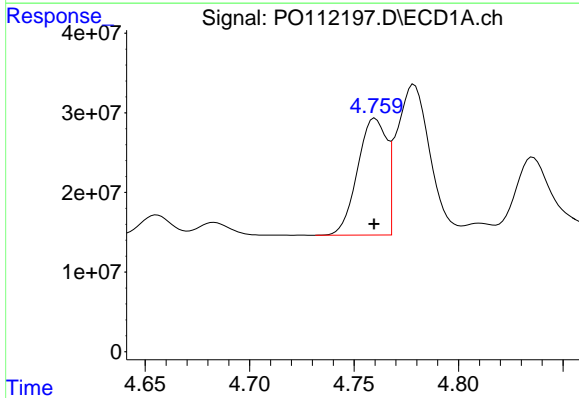
R.T.: 4.998 min
 Delta R.T.: -0.001 min
 Response: 75700282
 Conc: 1031.34 ng/ml

Instrument :
 ECD_O
 ClientSampleId :
 AR1242CCC500



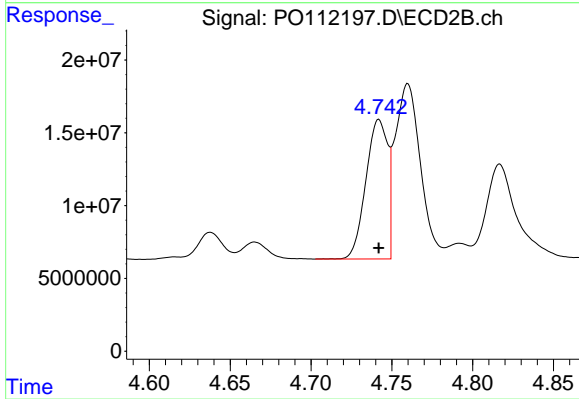
#15 AR-1232-5

R.T.: 5.190 min
 Delta R.T.: 0.000 min
 Response: 71965197
 Conc: 969.10 ng/ml



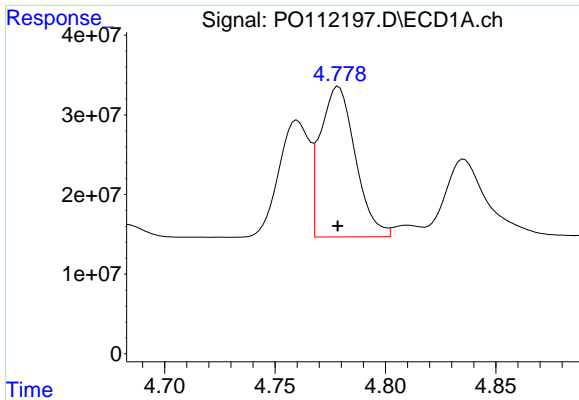
#16 AR-1242-1

R.T.: 4.760 min
 Delta R.T.: 0.000 min
 Response: 141262936
 Conc: 487.72 ng/ml



#16 AR-1242-1

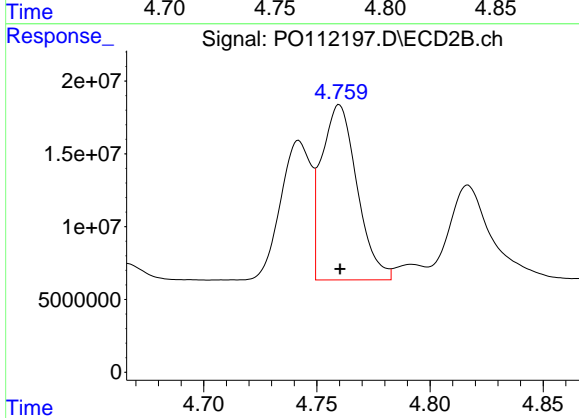
R.T.: 4.742 min
 Delta R.T.: 0.000 min
 Response: 89411044
 Conc: 461.22 ng/ml



#17 AR-1242-2

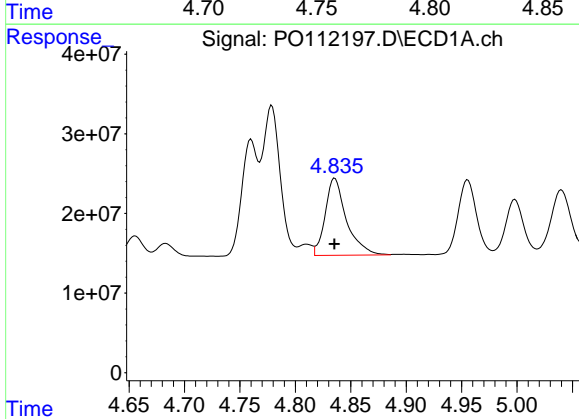
R.T.: 4.779 min
 Delta R.T.: 0.000 min
 Response: 209037631
 Conc: 490.79 ng/ml

Instrument :
 ECD_O
 ClientSampleId :
 AR1242CCC500



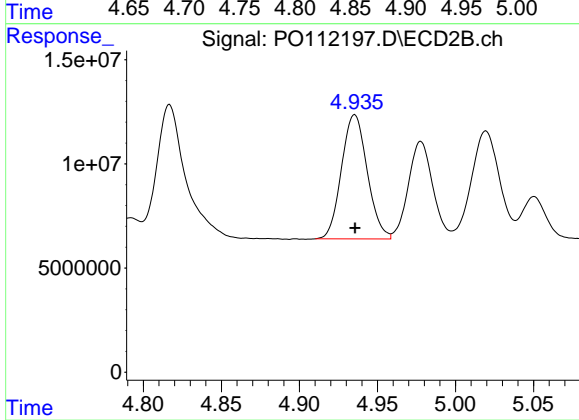
#17 AR-1242-2

R.T.: 4.760 min
 Delta R.T.: 0.000 min
 Response: 131408287
 Conc: 463.76 ng/ml



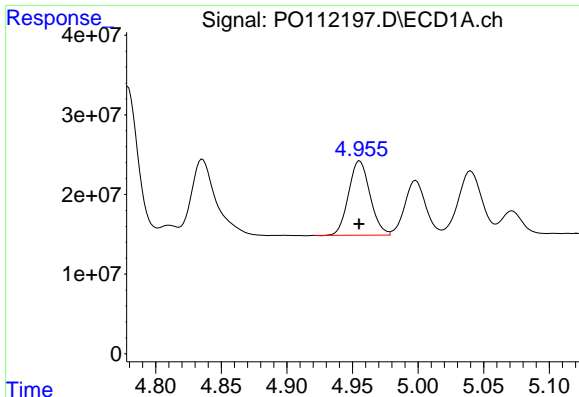
#18 AR-1242-3

R.T.: 4.836 min
 Delta R.T.: 0.000 min
 Response: 129415875
 Conc: 472.86 ng/ml



#18 AR-1242-3

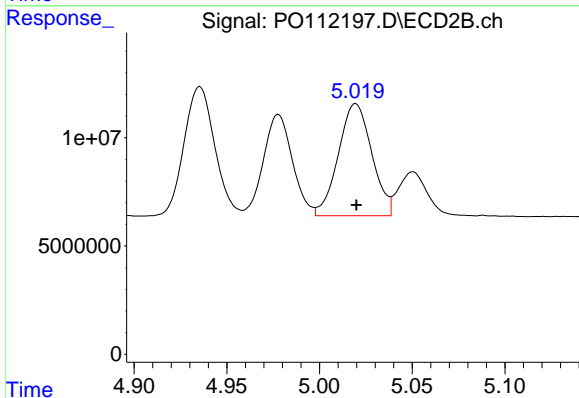
R.T.: 4.935 min
 Delta R.T.: 0.000 min
 Response: 68555307
 Conc: 470.60 ng/ml



#19 AR-1242-4

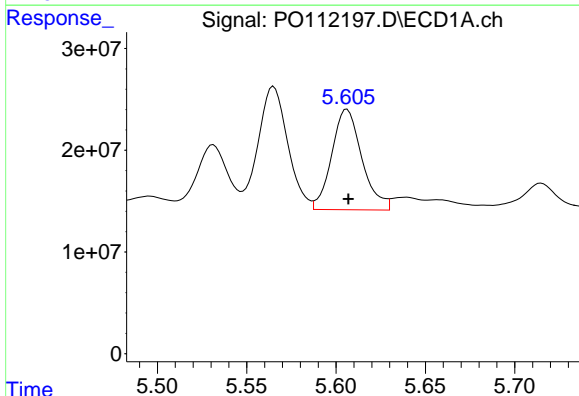
R.T.: 4.956 min
 Delta R.T.: 0.000 min
 Response: 106070598
 Conc: 470.76 ng/ml

Instrument :
 ECD_O
 ClientSampleId :
 AR1242CCC500



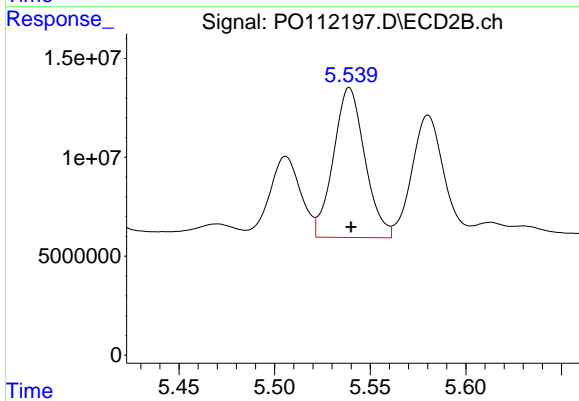
#19 AR-1242-4

R.T.: 5.019 min
 Delta R.T.: 0.000 min
 Response: 65113813
 Conc: 459.06 ng/ml



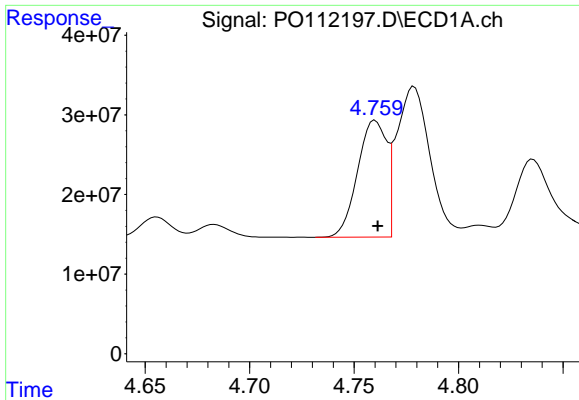
#20 AR-1242-5

R.T.: 5.606 min
 Delta R.T.: 0.000 min
 Response: 116491059
 Conc: 550.34 ng/ml



#20 AR-1242-5

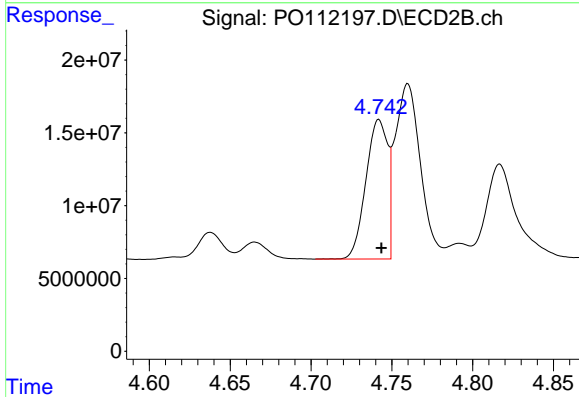
R.T.: 5.539 min
 Delta R.T.: 0.000 min
 Response: 86744685
 Conc: 477.32 ng/ml



#21 AR-1248-1

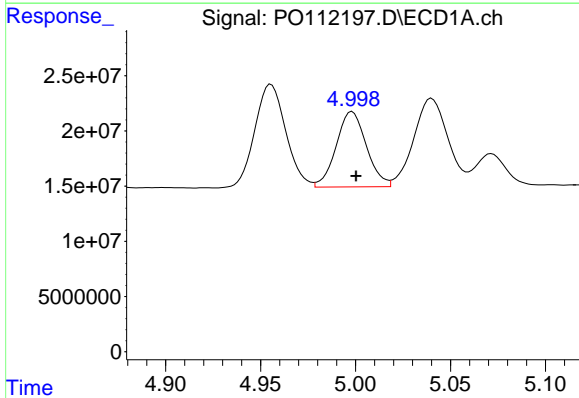
R.T.: 4.760 min
 Delta R.T.: -0.001 min
 Response: 141262936
 Conc: 622.58 ng/ml

Instrument :
 ECD_O
 ClientSampleId :
 AR1242CCC500



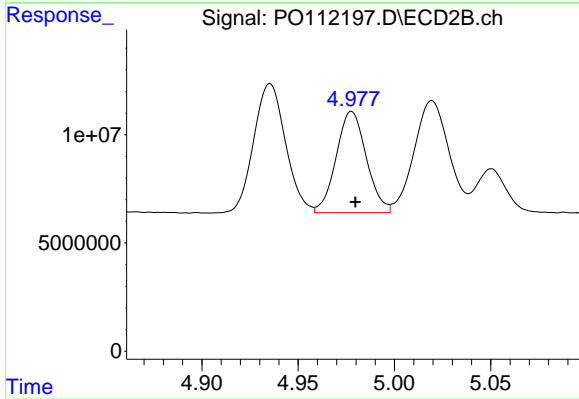
#21 AR-1248-1

R.T.: 4.742 min
 Delta R.T.: -0.001 min
 Response: 89411044
 Conc: 579.21 ng/ml



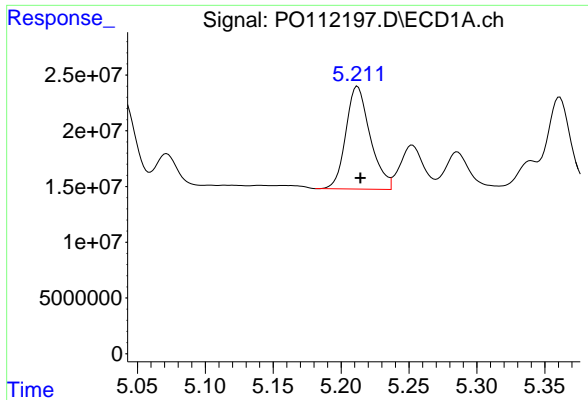
#22 AR-1248-2

R.T.: 4.998 min
 Delta R.T.: -0.002 min
 Response: 75700282
 Conc: 245.52 ng/ml



#22 AR-1248-2

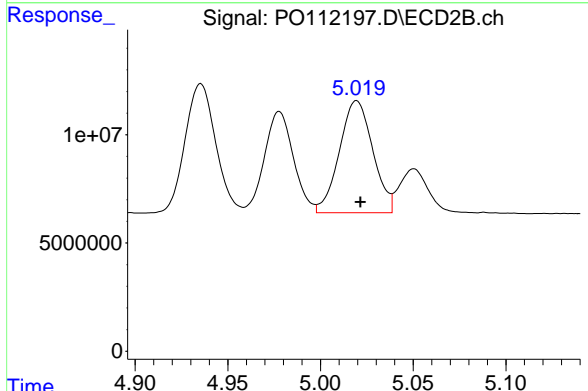
R.T.: 4.978 min
 Delta R.T.: -0.002 min
 Response: 51094668
 Conc: 248.31 ng/ml



#23 AR-1248-3

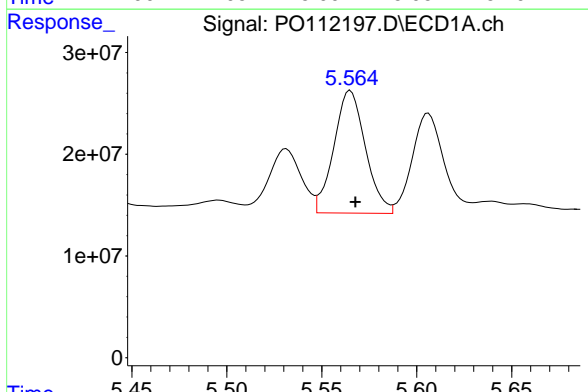
R.T.: 5.212 min
 Delta R.T.: -0.002 min
 Response: 114988812
 Conc: 282.31 ng/ml

Instrument :
 ECD_O
 ClientSampleId :
 AR1242CCC500



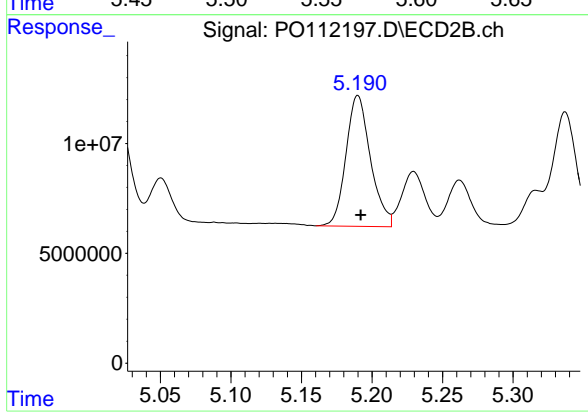
#23 AR-1248-3

R.T.: 5.019 min
 Delta R.T.: -0.002 min
 Response: 65113813
 Conc: 303.14 ng/ml



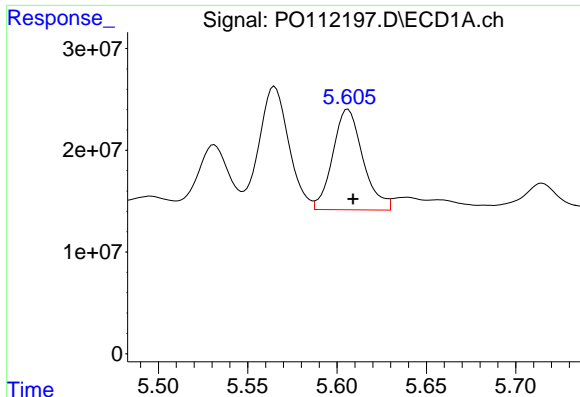
#24 AR-1248-4

R.T.: 5.565 min
 Delta R.T.: -0.003 min
 Response: 139599633
 Conc: 241.88 ng/ml



#24 AR-1248-4

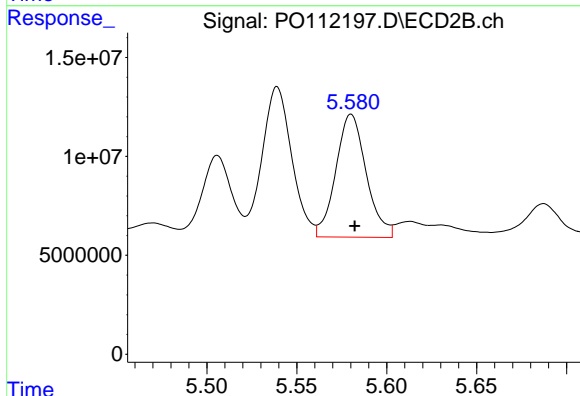
R.T.: 5.190 min
 Delta R.T.: -0.002 min
 Response: 71965197
 Conc: 278.15 ng/ml



#25 AR-1248-5

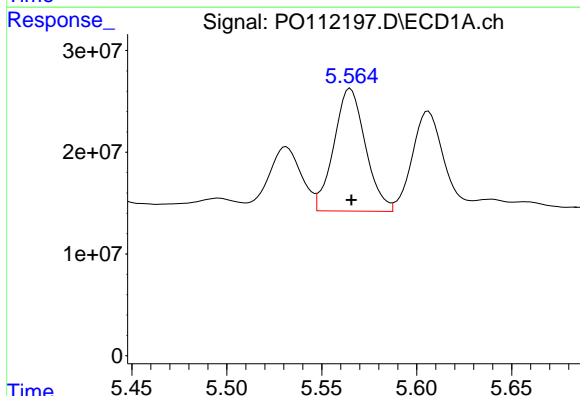
R.T.: 5.606 min
 Delta R.T.: -0.003 min
 Response: 116491059
 Conc: 298.46 ng/ml

Instrument :
 ECD_O
 ClientSampleId :
 AR1242CCC500



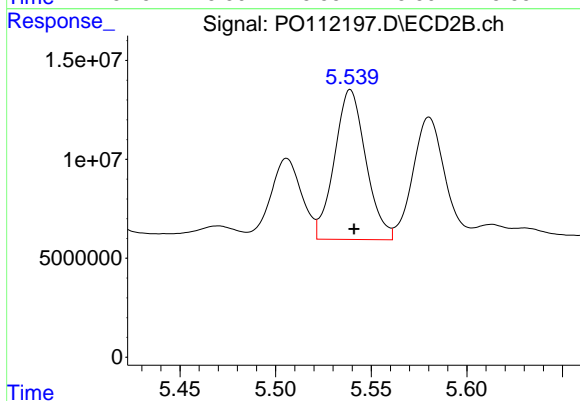
#25 AR-1248-5

R.T.: 5.580 min
 Delta R.T.: -0.002 min
 Response: 73293984
 Conc: 292.53 ng/ml



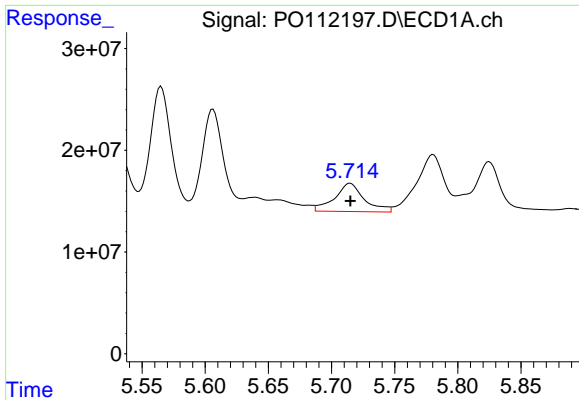
#26 AR-1254-1

R.T.: 5.565 min
 Delta R.T.: 0.000 min
 Response: 139599633
 Conc: 226.95 ng/ml



#26 AR-1254-1

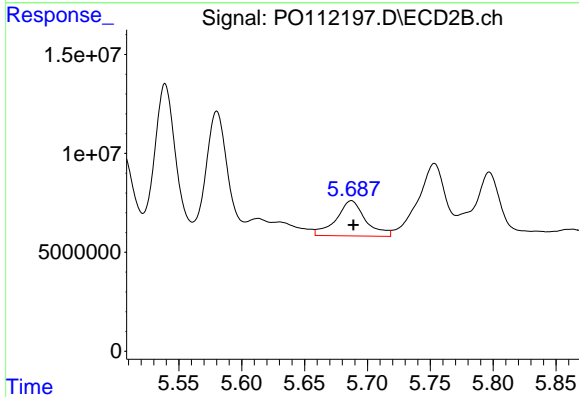
R.T.: 5.539 min
 Delta R.T.: -0.002 min
 Response: 86744685
 Conc: 227.58 ng/ml



#27 AR-1254-2

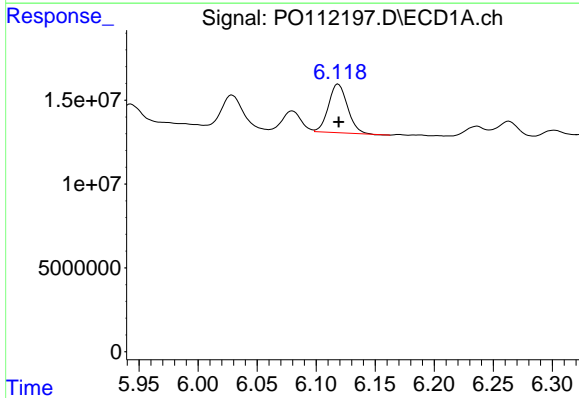
R.T.: 5.715 min
 Delta R.T.: 0.000 min
 Response: 45364082
 Conc: 84.68 ng/ml

Instrument :
 ECD_O
 ClientSampleId :
 AR1242CCC500



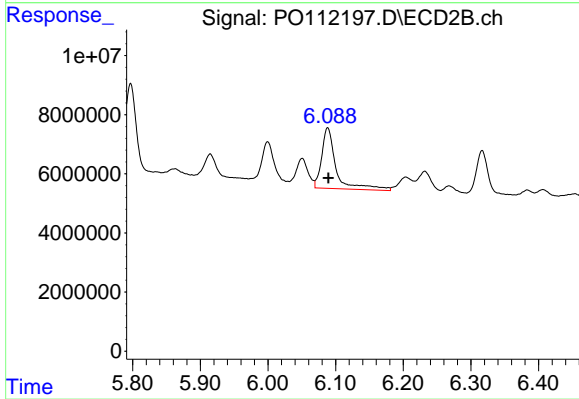
#27 AR-1254-2

R.T.: 5.687 min
 Delta R.T.: -0.002 min
 Response: 28880813
 Conc: 87.04 ng/ml



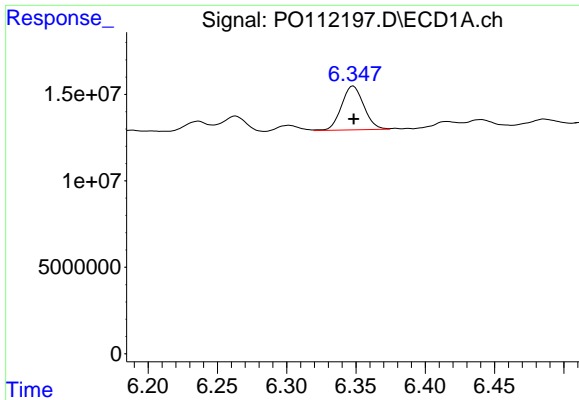
#28 AR-1254-3

R.T.: 6.119 min
 Delta R.T.: 0.000 min
 Response: 32505079
 Conc: 38.72 ng/ml



#28 AR-1254-3

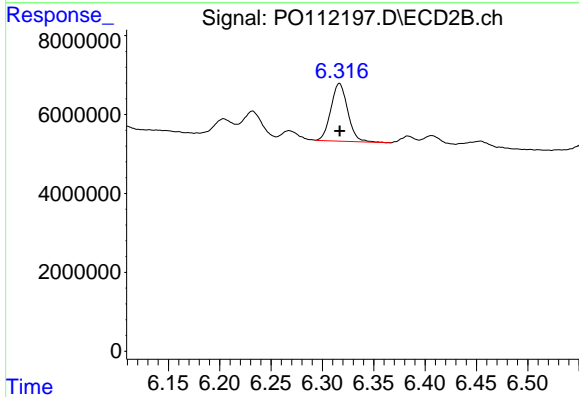
R.T.: 6.088 min
 Delta R.T.: -0.001 min
 Response: 30487431
 Conc: 63.25 ng/ml



#29 AR-1254-4

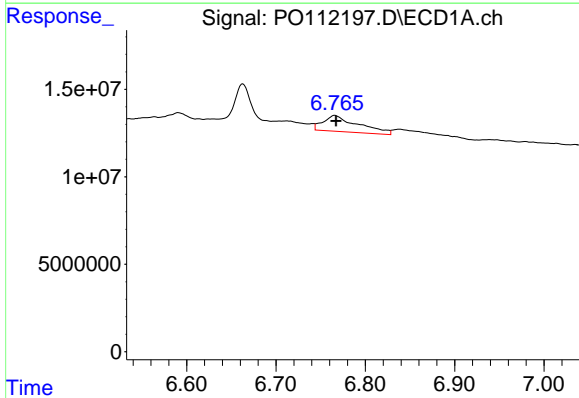
R.T.: 6.348 min
 Delta R.T.: 0.000 min
 Response: 28339316
 Conc: 58.92 ng/ml

Instrument :
 ECD_O
 ClientSampleId :
 AR1242CCC500



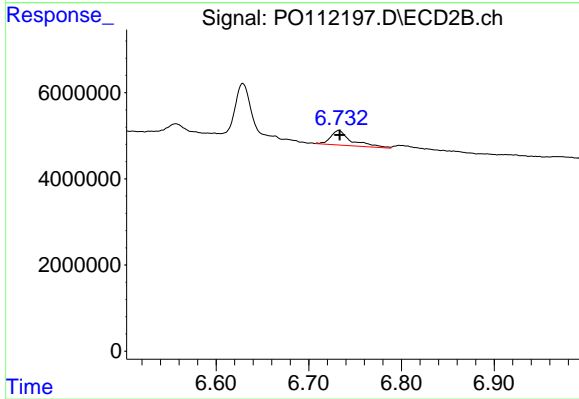
#29 AR-1254-4

R.T.: 6.317 min
 Delta R.T.: 0.000 min
 Response: 16713572
 Conc: 64.11 ng/ml



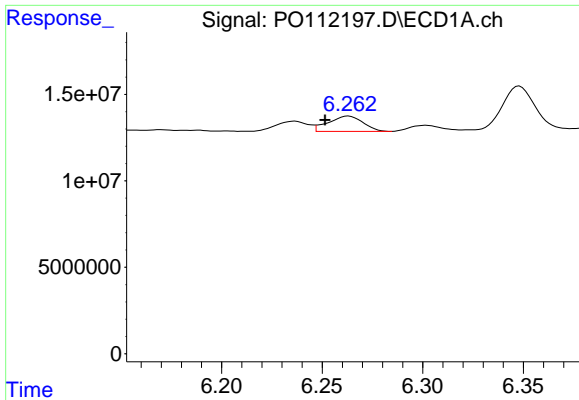
#30 AR-1254-5

R.T.: 6.766 min
 Delta R.T.: -0.001 min
 Response: 25310657
 Conc: 32.70 ng/ml



#30 AR-1254-5

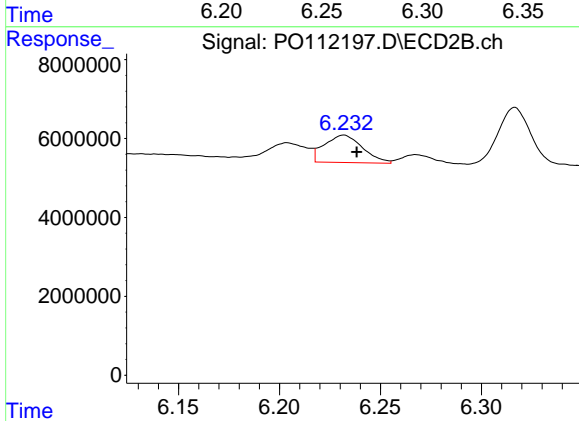
R.T.: 6.732 min
 Delta R.T.: 0.000 min
 Response: 5276550
 Conc: 14.81 ng/ml



#31 AR-1260-1

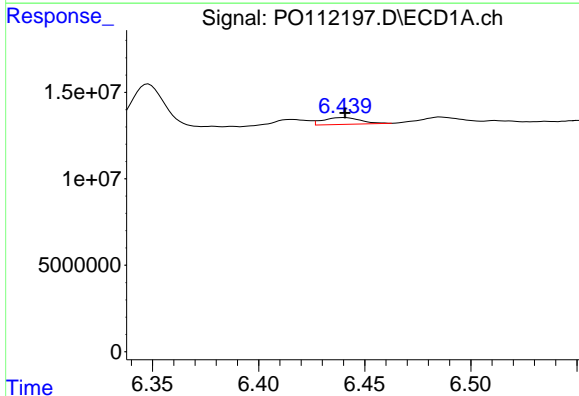
R.T.: 6.263 min
 Delta R.T.: 0.012 min
 Response: 10568964
 Conc: 21.09 ng/ml

Instrument :
 ECD_O
 ClientSampleId :
 AR1242CCC500



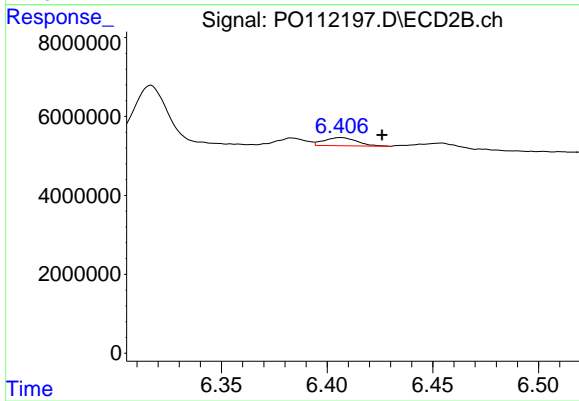
#31 AR-1260-1

R.T.: 6.232 min
 Delta R.T.: -0.006 min
 Response: 9154431
 Conc: 32.63 ng/ml



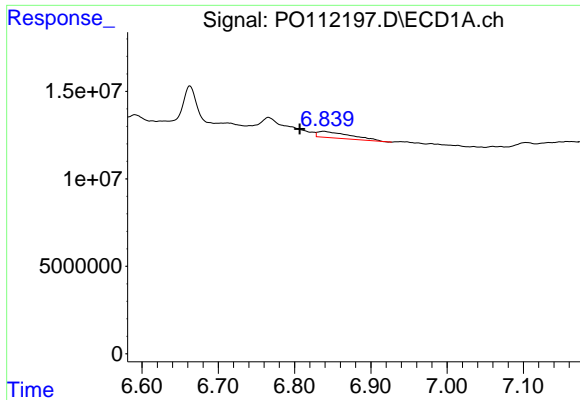
#32 AR-1260-2

R.T.: 6.440 min
 Delta R.T.: 0.000 min
 Response: 4764330
 Conc: 6.45 ng/ml



#32 AR-1260-2

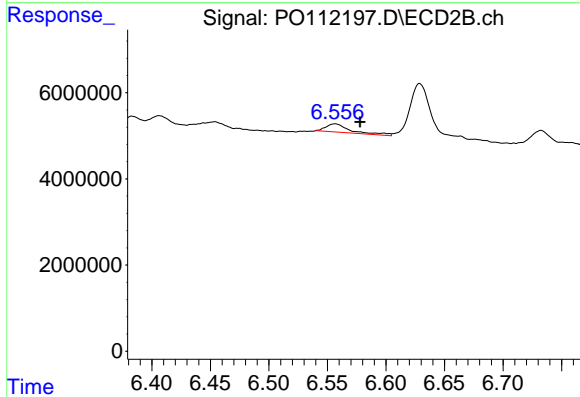
R.T.: 6.406 min
 Delta R.T.: -0.020 min
 Response: 2252193
 Conc: 6.62 ng/ml



#33 AR-1260-3

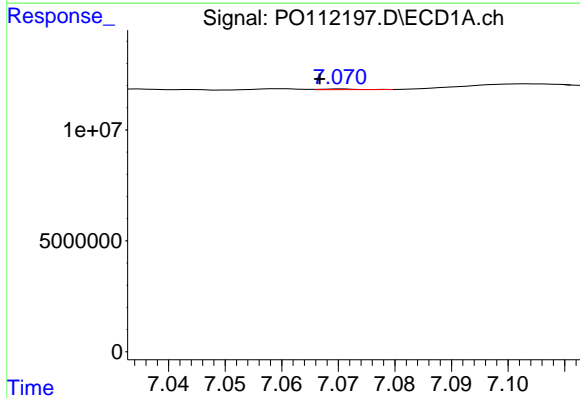
R.T.: 6.838 min
 Delta R.T.: 0.031 min
 Response: 10965563
 Conc: 16.73 ng/ml

Instrument :
 ECD_O
 ClientSampleId :
 AR1242CCC500



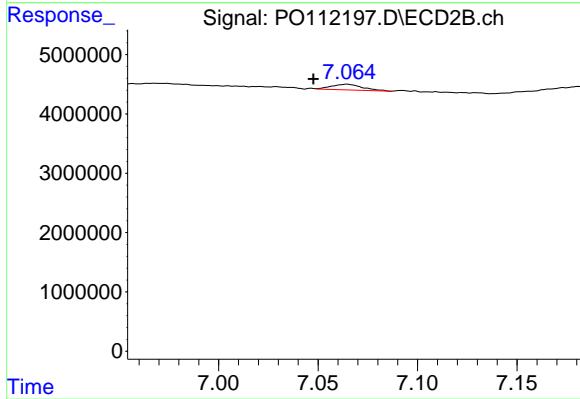
#33 AR-1260-3

R.T.: 6.556 min
 Delta R.T.: -0.021 min
 Response: 2821256
 Conc: 10.24 ng/ml



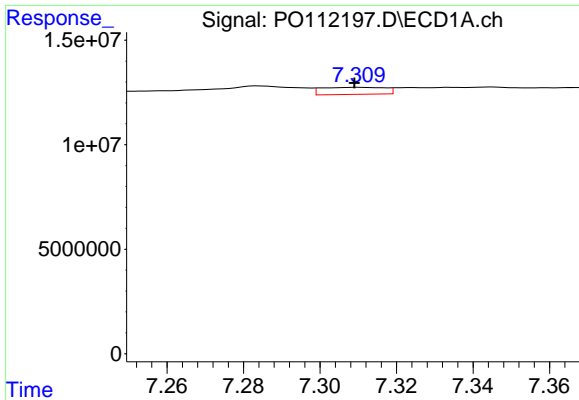
#34 AR-1260-4

R.T.: 7.071 min
 Delta R.T.: 0.004 min
 Response: 143444
 Conc: 0.33 ng/ml



#34 AR-1260-4

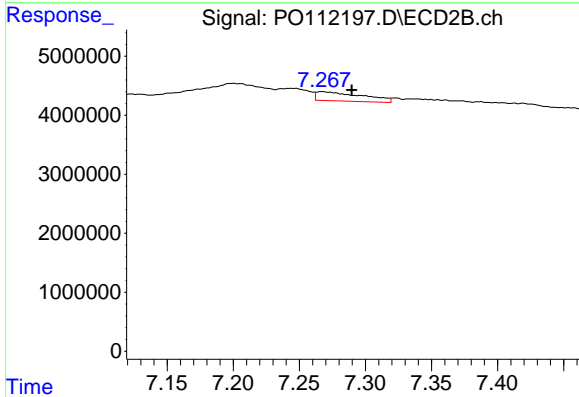
R.T.: 7.065 min
 Delta R.T.: 0.017 min
 Response: 1027899
 Conc: 5.12 ng/ml



#35 AR-1260-5

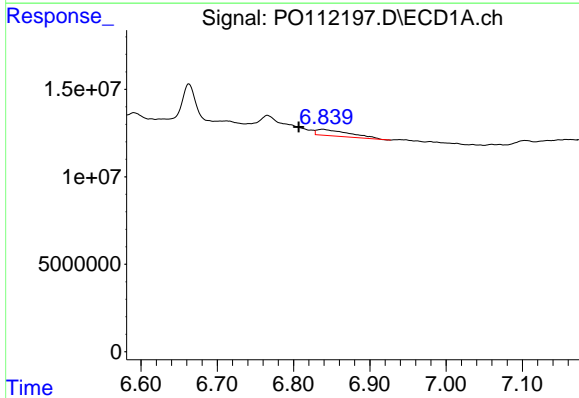
R.T.: 7.310 min
 Delta R.T.: 0.001 min
 Response: 3889456
 Conc: 3.08 ng/ml

Instrument :
 ECD_O
 ClientSampleId :
 AR1242CCC500



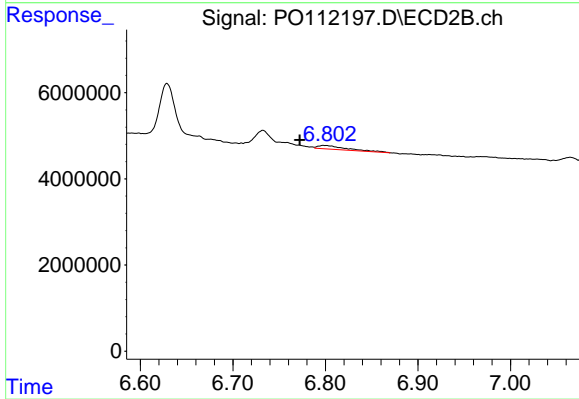
#35 AR-1260-5

R.T.: 7.267 min
 Delta R.T.: -0.022 min
 Response: 3761857
 Conc: 8.40 ng/ml



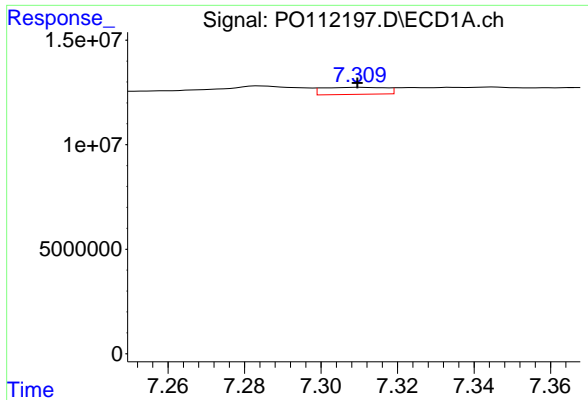
#36 AR-1262-1

R.T.: 6.838 min
 Delta R.T.: 0.031 min
 Response: 10965563
 Conc: 10.73 ng/ml



#36 AR-1262-1

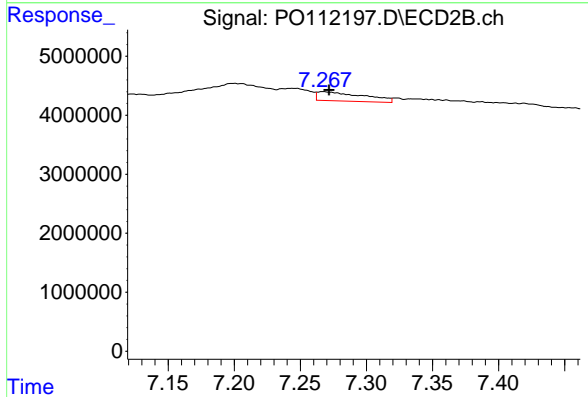
R.T.: 6.798 min
 Delta R.T.: 0.026 min
 Response: 1701330
 Conc: 4.18 ng/ml



#37 AR-1262-2

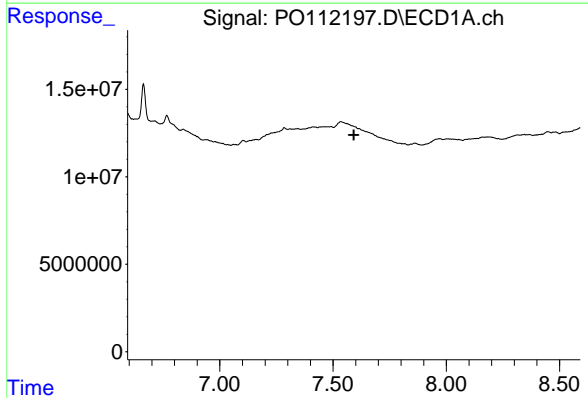
R.T.: 7.310 min
 Delta R.T.: 0.000 min
 Response: 3889456
 Conc: 2.37 ng/ml

Instrument : ECD_O
 ClientSampleId : AR1242CCC500



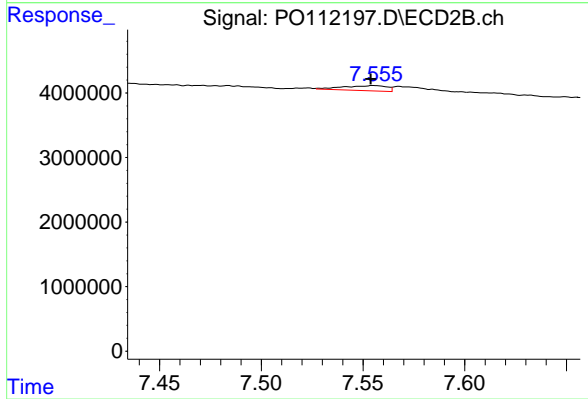
#37 AR-1262-2

R.T.: 7.267 min
 Delta R.T.: -0.004 min
 Response: 3761857
 Conc: 7.34 ng/ml



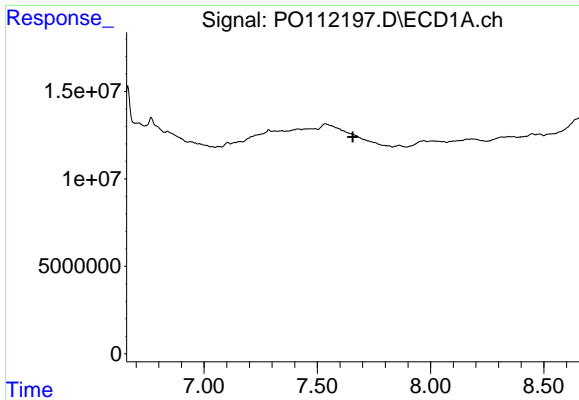
#38 AR-1262-3

R.T.: 7.535 min
 Delta R.T.: -0.057 min
 Response: -542393
 Conc: N.D.



#38 AR-1262-3

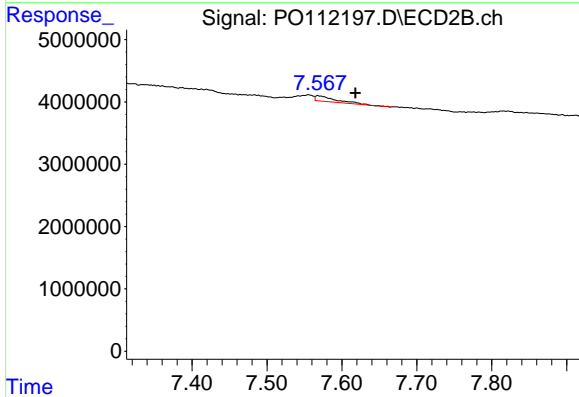
R.T.: 7.555 min
 Delta R.T.: 0.002 min
 Response: 1184774
 Conc: 6.60 ng/ml



#39 AR-1262-4

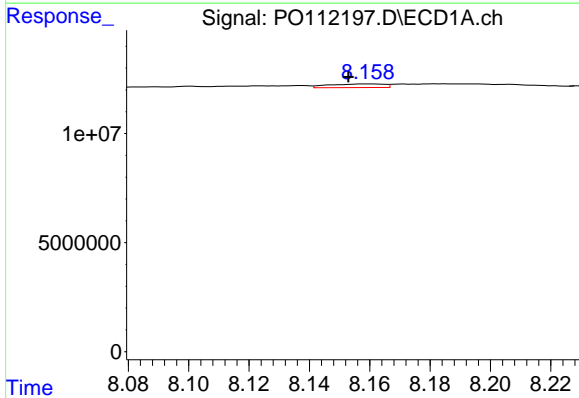
R.T.: 0.000 min
 Exp R.T.: 7.657 min
 Response: 0
 Conc: N.D.

Instrument :
 ECD_O
 ClientSampleId :
 AR1242CCC500



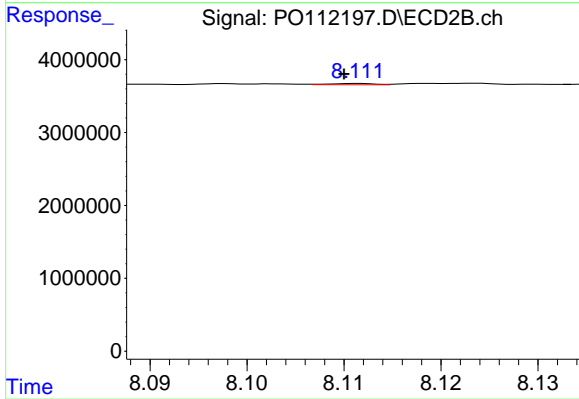
#39 AR-1262-4

R.T.: 7.568 min
 Delta R.T.: -0.050 min
 Response: 1628526
 Conc: 5.60 ng/ml



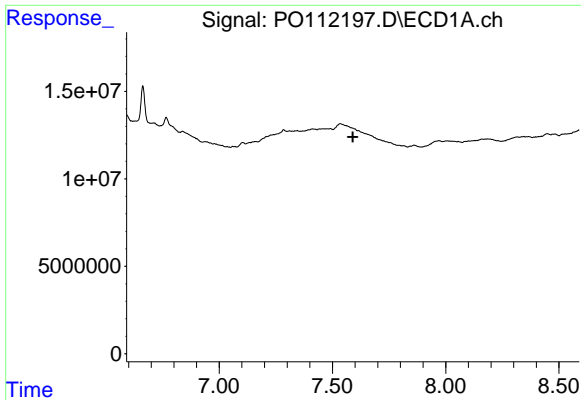
#40 AR-1262-5

R.T.: 8.160 min
 Delta R.T.: 0.007 min
 Response: 2109135
 Conc: 4.71 ng/ml



#40 AR-1262-5

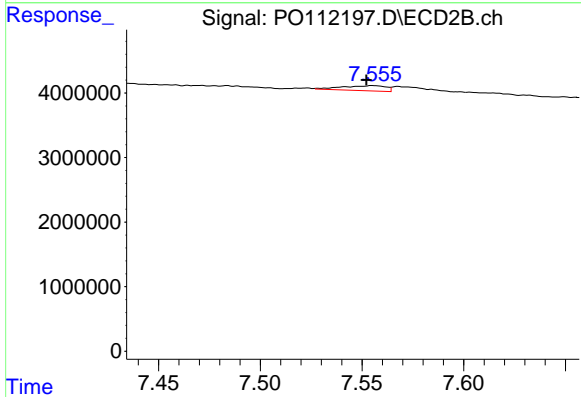
R.T.: 8.111 min
 Delta R.T.: 0.001 min
 Response: 60086
 Conc: 0.57 ng/ml



#41 AR-1268-1

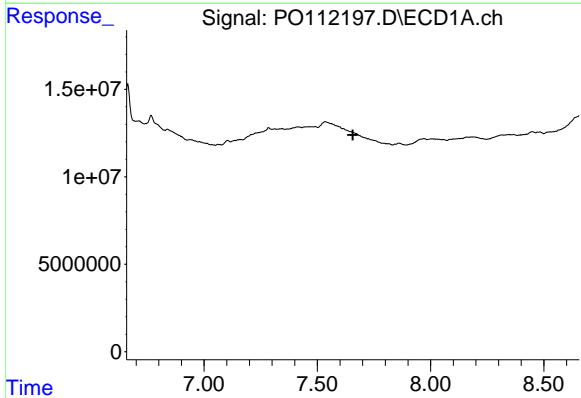
R.T.: 7.535 min
 Delta R.T.: -0.056 min
 Response: -542393
 Conc: N.D.

Instrument :
 ECD_O
 ClientSampleId :
 AR1242CCC500



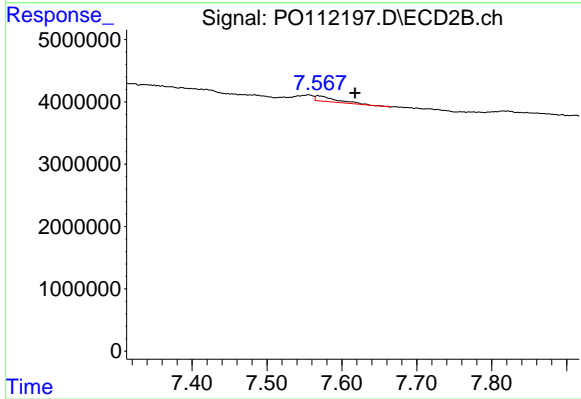
#41 AR-1268-1

R.T.: 7.555 min
 Delta R.T.: 0.003 min
 Response: 1184774
 Conc: 2.41 ng/ml



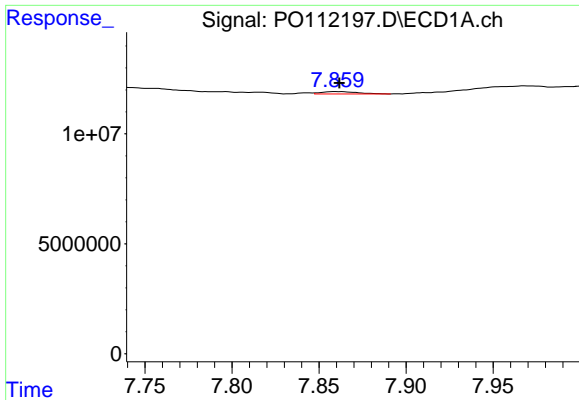
#42 AR-1268-2

R.T.: 0.000 min
 Exp R.T. : 7.656 min
 Response: 0
 Conc: N.D.



#42 AR-1268-2

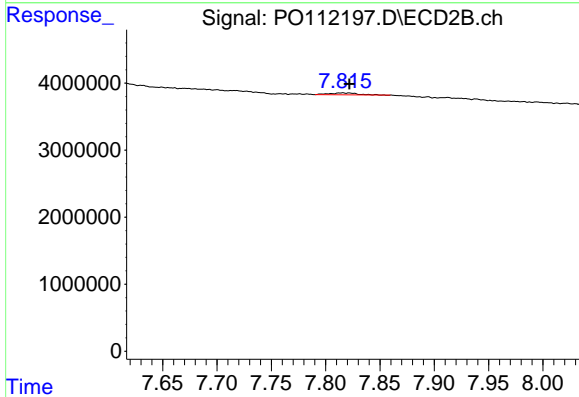
R.T.: 7.568 min
 Delta R.T.: -0.050 min
 Response: 1628526
 Conc: 3.90 ng/ml



#43 AR-1268-3

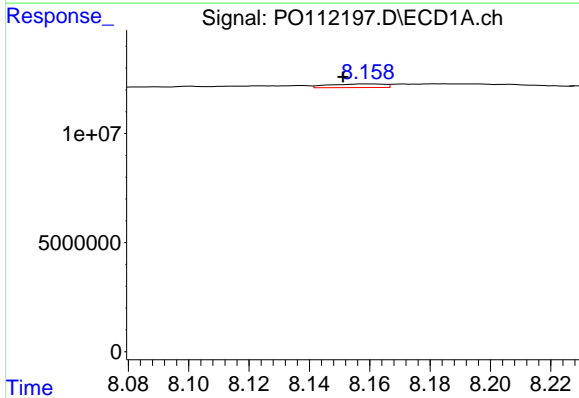
R.T.: 7.860 min
 Delta R.T.: -0.002 min
 Response: 1534397
 Conc: 1.18 ng/ml

Instrument :
 ECD_O
 ClientSampleId :
 AR1242CCC500



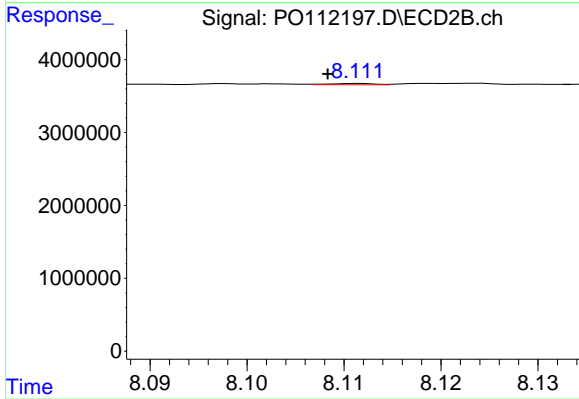
#43 AR-1268-3

R.T.: 7.815 min
 Delta R.T.: -0.006 min
 Response: 480662
 Conc: 1.52 ng/ml



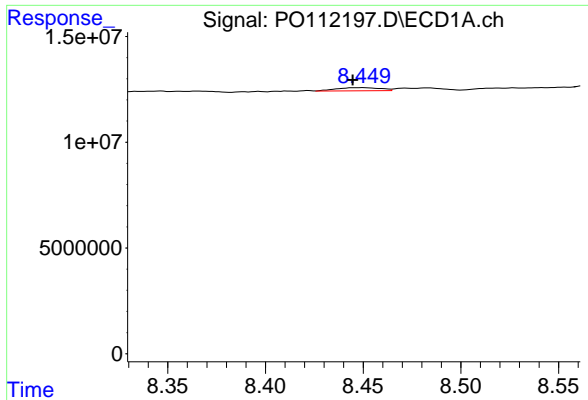
#44 AR-1268-4

R.T.: 8.160 min
 Delta R.T.: 0.008 min
 Response: 2109135
 Conc: 4.39 ng/ml



#44 AR-1268-4

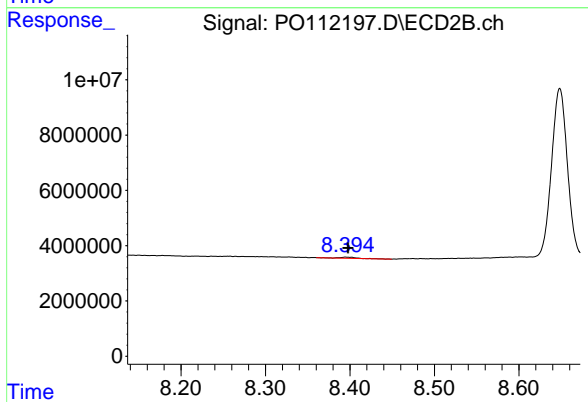
R.T.: 8.111 min
 Delta R.T.: 0.003 min
 Response: 60086
 Conc: 0.54 ng/ml



#45 AR-1268-5

R.T.: 8.449 min
 Delta R.T.: 0.005 min
 Response: 2279454
 Conc: 0.70 ng/ml

Instrument :
 ECD_O
 ClientSampleId :
 AR1242CCC500



#45 AR-1268-5

R.T.: 8.395 min
 Delta R.T.: -0.003 min
 Response: 533084
 Conc: 0.73 ng/ml