

Data Path : Z:\pestpcbsrv\HPCHEM1\ECD_0\Data\P0071025\
 Data File : PO112198.D
 Signal(s) : Signal #1: ECD1A.ch Signal #2: ECD2B.ch
 Acq On : 10 Jul 2025 18:28
 Operator : YP/AJ
 Sample : AR1248CCC500
 Misc :
 ALS Vial : 5 Sample Multiplier: 1

Instrument :
 ECD_0
 ClientSampleId :
 AR1248CCC500

Integration File signal 1: autoint1.e
 Integration File signal 2: autoint2.e
 Quant Time: Jul 10 22:55:03 2025
 Quant Method : Z:\pestpcbsrv\HPCHEM1\ECD_0\methods\P0070825.M
 Quant Title : GC EXTRACTABLES
 QLast Update : Wed Jul 09 10:50:50 2025
 Response via : Initial Calibration
 Integrator: ChemStation

Volume Inj. : 2 µl
 Signal #1 Phase : ZB-MR1 Signal #2 Phase: ZB-MR2
 Signal #1 Info : 30Mx0.32mmx 0.50µ Signal #2 Info : 30M x 0.32mm x 0.25µm

Compound	RT#1	RT#2	Resp#1	Resp#2	ng/ml	ng/ml
System Monitoring Compounds						
1) SA Tetrachlo...	3.671	3.666	540.3E6	333.3E6	54.602	52.322
2) SA Decachlor...	8.698	8.687	281.2E6	200603	41.128	0.116 #
Target Compounds						
3) L1 AR-1016-1	4.758	4.759	113.4E6	78165809	333.471	350.780
4) L1 AR-1016-2	4.776	4.791	120.8E6	15582373	242.827	47.349 #
5) L1 AR-1016-3	4.833	4.936	66649193	49003790	205.889	288.484 #
6) L1 AR-1016-4	4.955	4.977	75983045	97204224	295.885	708.344 #
7) L1 AR-1016-5	5.209	5.229	199.0E6	42234380	727.273	244.908 #
8) L2 AR-1221-1	3.885	3.875	2066236	815406	17.719	9.908 #
9) L2 AR-1221-2	3.972	3.963	7653646	5069746	97.078	85.416
10) L2 AR-1221-3	4.045	4.035	7803393	5924943	28.946	31.386
11) L3 AR-1232-1	4.045	4.035	7803393	5924943	36.351	39.473
12) L3 AR-1232-2	4.536	4.759	49679430	78165809	437.177	510.602
13) L3 AR-1232-3	4.776	4.936	120.8E6	49003790	527.298	649.005
14) L3 AR-1232-4	4.955	5.019	75983045	102.7E6	664.788	1556.376 #
15) L3 AR-1232-5	4.995	5.189	150.6E6	123.2E6	2051.215	1658.614
16) L4 AR-1242-1	4.758	4.741	113.4E6	73279354	391.598	378.005
17) L4 AR-1242-2	4.776	4.759	120.8E6	78165809	283.518	275.861
18) L4 AR-1242-3	4.833	4.936	66649193	49003790	243.525	336.386 #
19) L4 AR-1242-4	4.955	5.019	75983045	102.7E6	337.226	724.069 #
20) L4 AR-1242-5	5.604	5.539	200.5E6	173.3E6	947.090	953.499
21) L5 AR-1248-1	4.758	4.741	113.4E6	73279354	499.873	474.705
22) L5 AR-1248-2	4.995	4.977	150.6E6	97204224	488.314	472.398
23) L5 AR-1248-3	5.209	5.019	199.0E6	102.7E6	488.626	478.134
24) L5 AR-1248-4	5.562	5.189	290.5E6	123.2E6	503.420	476.057
25) L5 AR-1248-5	5.604	5.579	200.5E6	123.7E6	513.629	493.665
26) L6 AR-1254-1	5.562	5.539	290.5E6	173.3E6	472.348	454.611
27) L6 AR-1254-2	5.712	5.687	94218822	58955542	175.884	177.678
28) L6 AR-1254-3	6.116	6.087	106.0E6	73551176	126.204	152.582
29) L6 AR-1254-4	6.345	6.316	76200830	50018529	158.416	191.866
30) L6 AR-1254-5	6.764	6.731	50077430	11552521	64.704	32.418 #
31) L7 AR-1260-1	6.260	6.232	34949474	36592482	69.726	130.426 #
32) L7 AR-1260-2	6.436	6.406	8351234	4885212	11.314	14.368 #
33) L7 AR-1260-3	6.836	6.556	12651130	4982256	19.301	18.079
34) L7 AR-1260-4	7.059	7.063	1967071	2550125	4.519	12.710 #
35) L7 AR-1260-5	7.306	7.297	5981098	293939	4.737	0.657 #
36) L8 AR-1262-1	6.836	6.800	12651130	2238915	12.383	5.497 #
37) L8 AR-1262-2	7.306	7.269	5981098	1398689	3.648	2.729 #
38) L8 AR-1262-3	7.596	7.551	12565022	3303745	19.572	18.403
39) L8 AR-1262-4	7.650	7.609	9423823	1817224	8.796	6.246 #
40) L8 AR-1262-5	8.146	8.106	3967850	123767	8.854	1.170 #
41) L9 AR-1268-1	7.596	7.551	12565022	3303745	6.838	6.722

Data Path : Z:\pestpcbsrv\HPCHEM1\ECD_0\Data\P0071025\
 Data File : P0112198.D
 Signal(s) : Signal #1: ECD1A.ch Signal #2: ECD2B.ch
 Acq On : 10 Jul 2025 18:28
 Operator : YP/AJ
 Sample : AR1248CCC500
 Misc :
 ALS Vial : 5 Sample Multiplier: 1

Instrument :
 ECD_0
 ClientSampleId :
 AR1248CCC500

Integration File signal 1: autoint1.e
 Integration File signal 2: autoint2.e
 Quant Time: Jul 10 22:55:03 2025
 Quant Method : Z:\pestpcbsrv\HPCHEM1\ECD_0\methods\P0070825.M
 Quant Title : GC EXTRACTABLES
 QLast Update : Wed Jul 09 10:50:50 2025
 Response via : Initial Calibration
 Integrator: ChemStation

Volume Inj. : 2 µl
 Signal #1 Phase : ZB-MR1 Signal #2 Phase: ZB-MR2
 Signal #1 Info : 30Mx0.32mmx 0.50µ Signal #2 Info : 30M x 0.32mm x 0.25µm

	Compound	RT#1	RT#2	Resp#1	Resp#2	ng/ml	ng/ml
42)	L9 AR-1268-2	7.650	7.609	9423823	1817224	6.050	4.356 #
43)	L9 AR-1268-3	7.856	7.820	625768	414589	0.481	1.310 #
44)	L9 AR-1268-4	8.146	8.106	3967850	123767	8.259	1.110 #
45)	L9 AR-1268-5	8.444	8.396	3202869	589696	0.981	0.812

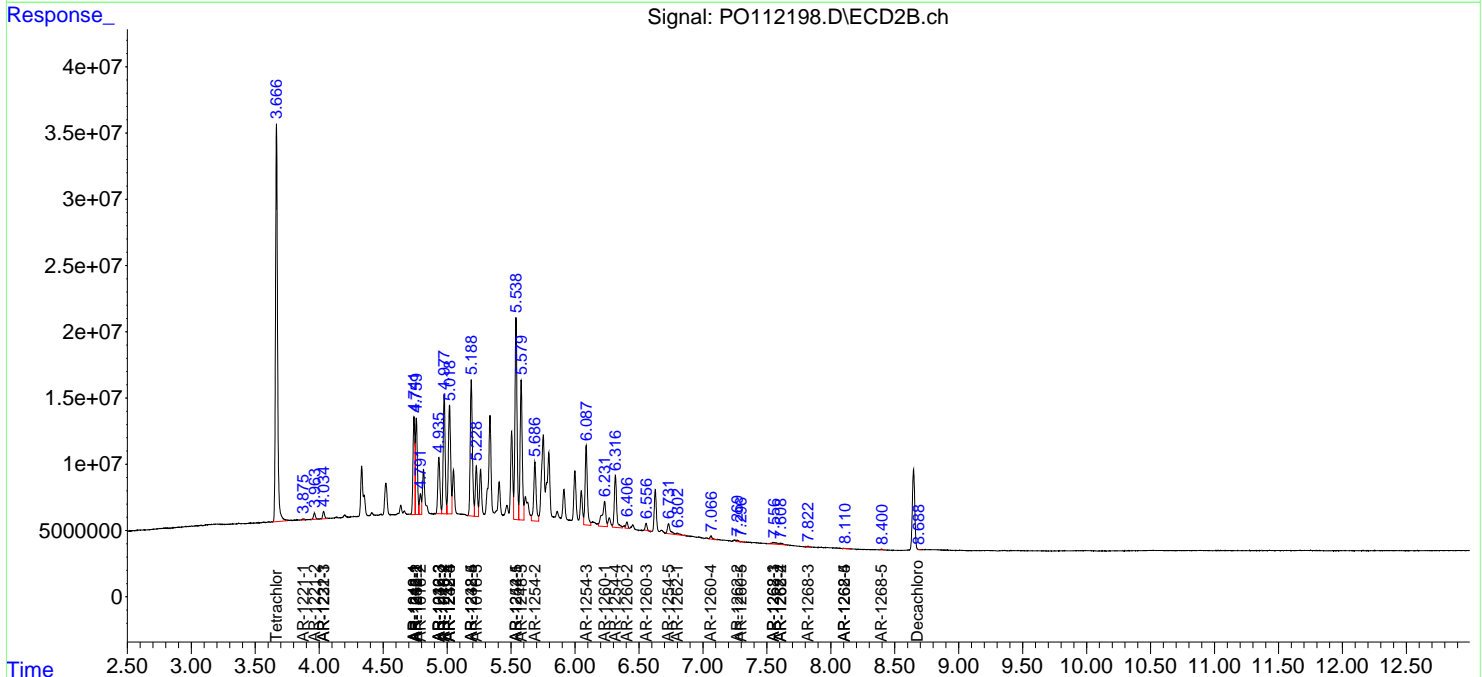
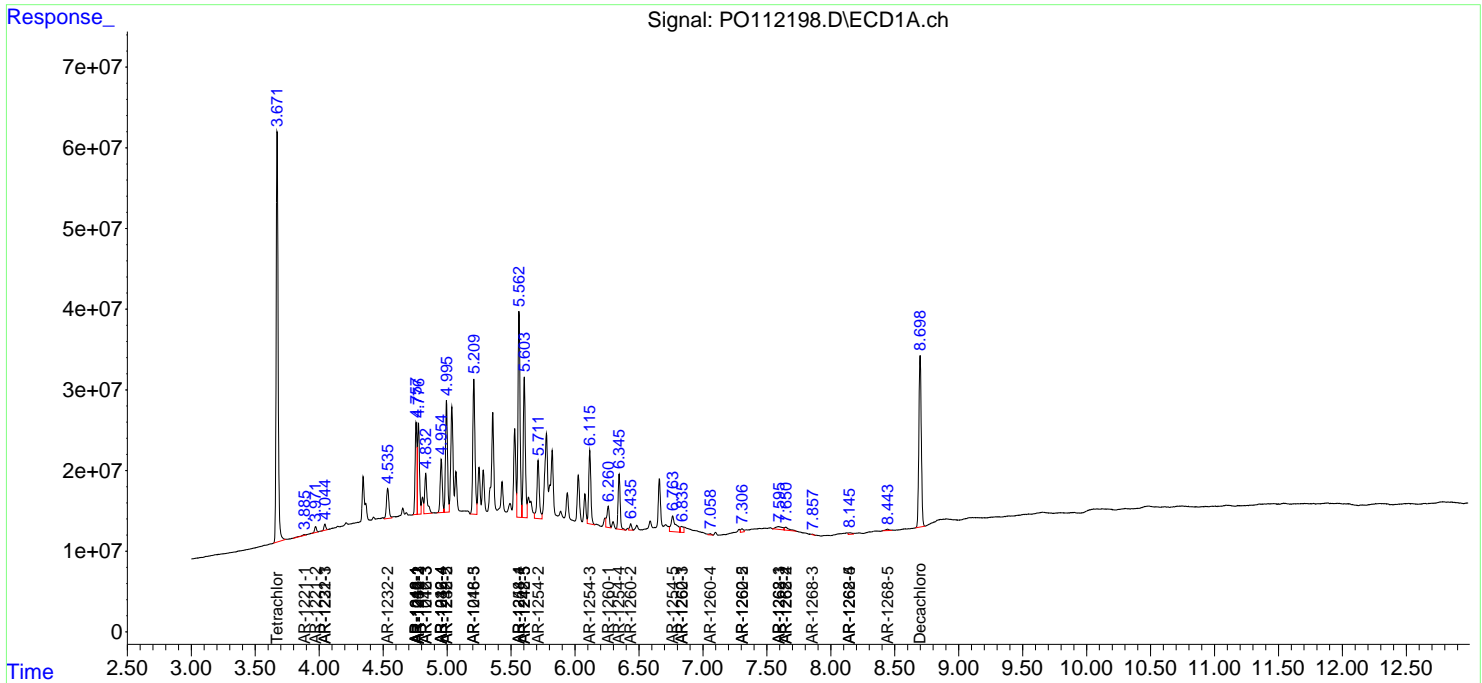
(f)=RT Delta > 1/2 Window (#)=Amounts differ by > 25% (m)=manual int.

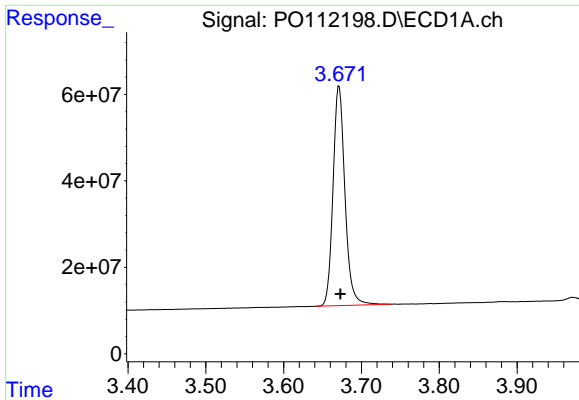
Data Path : Z:\pestpcbsrv\HPCHEM1\ECD_O\Data\PO071025\
 Data File : PO112198.D
 Signal(s) : Signal #1: ECD1A.ch Signal #2: ECD2B.ch
 Acq On : 10 Jul 2025 18:28
 Operator : YP/AJ
 Sample : AR1248CCC500
 Misc :
 ALS Vial : 5 Sample Multiplier: 1

Instrument :
 ECD_O
 ClientSampleId :
 AR1248CCC500

Integration File signal 1: autoint1.e
 Integration File signal 2: autoint2.e
 Quant Time: Jul 10 22:55:03 2025
 Quant Method : Z:\pestpcbsrv\HPCHEM1\ECD_O\methods\PO070825.M
 Quant Title : GC EXTRACTABLES
 QLast Update : Wed Jul 09 10:50:50 2025
 Response via : Initial Calibration
 Integrator: ChemStation

Volume Inj. : 2 µl
 Signal #1 Phase : ZB-MR1 Signal #2 Phase: ZB-MR2
 Signal #1 Info : 30Mx0.32mmx 0.50µ Signal #2 Info : 30M x 0.32mm x 0.25µm

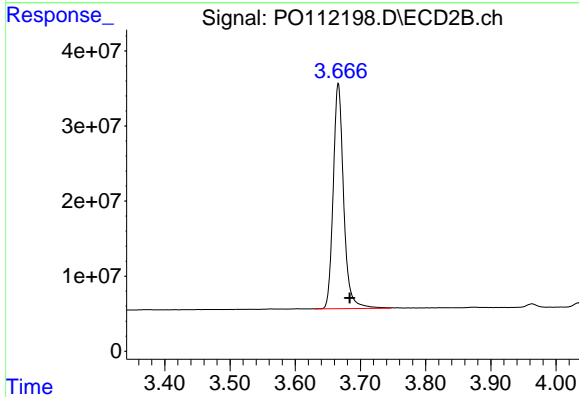




#1 Tetrachloro-m-xylene

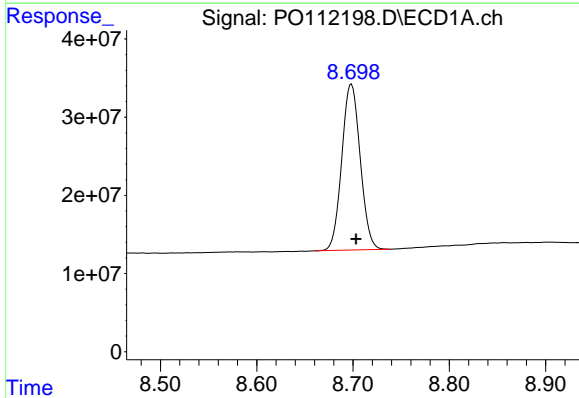
R.T.: 3.671 min
 Delta R.T.: -0.002 min
 Response: 540275021
 Conc: 54.60 ng/ml

Instrument :
 ECD_O
 ClientSampleId :
 AR1248CCC500



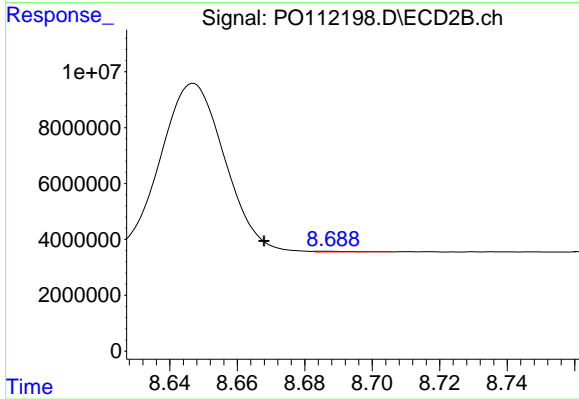
#1 Tetrachloro-m-xylene

R.T.: 3.666 min
 Delta R.T.: -0.018 min
 Response: 333348768
 Conc: 52.32 ng/ml



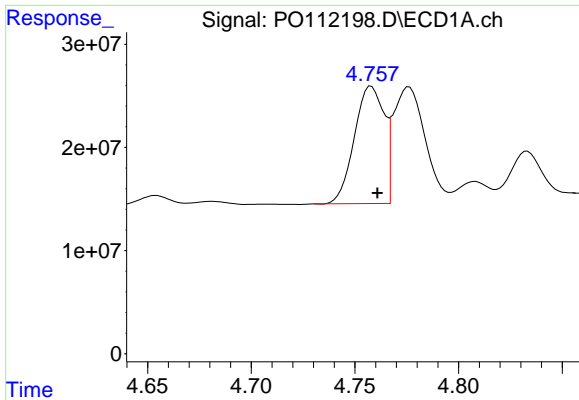
#2 Decachlorobiphenyl

R.T.: 8.698 min
 Delta R.T.: -0.005 min
 Response: 281190848
 Conc: 41.13 ng/ml



#2 Decachlorobiphenyl

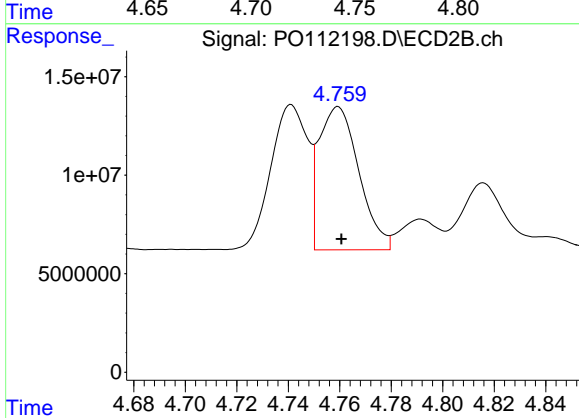
R.T.: 8.687 min
 Delta R.T.: 0.019 min
 Response: 200603
 Conc: 0.12 ng/ml



#3 AR-1016-1

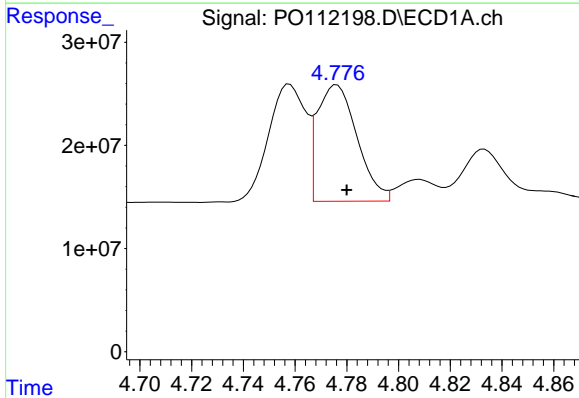
R.T.: 4.758 min
 Delta R.T.: -0.003 min
 Response: 113421065
 Conc: 333.47 ng/ml

Instrument :
 ECD_O
 ClientSampleId :
 AR1248CCC500



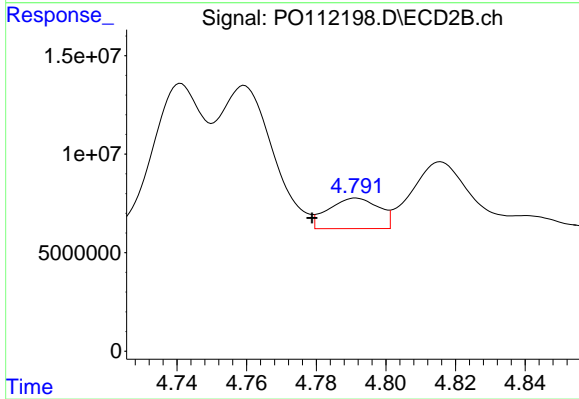
#3 AR-1016-1

R.T.: 4.759 min
 Delta R.T.: -0.001 min
 Response: 78165809
 Conc: 350.78 ng/ml



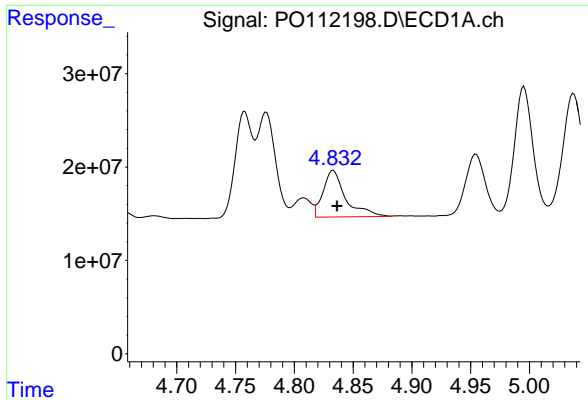
#4 AR-1016-2

R.T.: 4.776 min
 Delta R.T.: -0.004 min
 Response: 120755998
 Conc: 242.83 ng/ml



#4 AR-1016-2

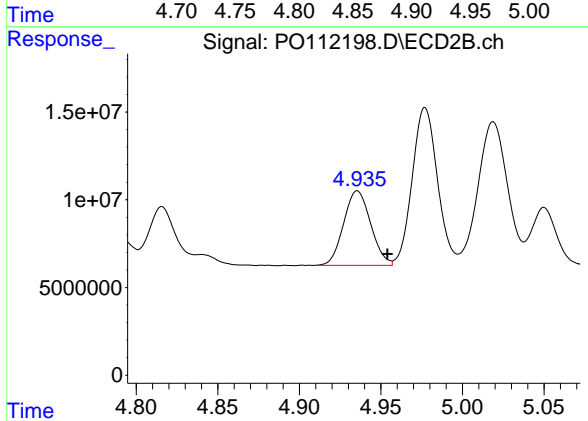
R.T.: 4.791 min
 Delta R.T.: 0.013 min
 Response: 15582373
 Conc: 47.35 ng/ml



#5 AR-1016-3

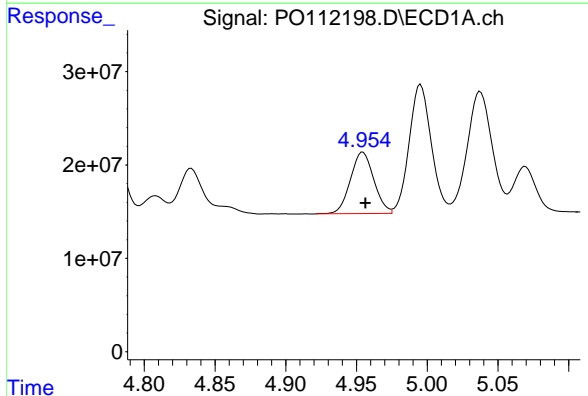
R.T.: 4.833 min
 Delta R.T.: -0.003 min
 Response: 66649193
 Conc: 205.89 ng/ml

Instrument :
 ECD_O
 ClientSampleId :
 AR1248CCC500



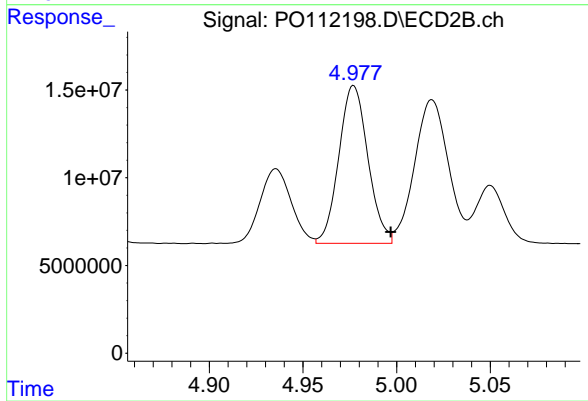
#5 AR-1016-3

R.T.: 4.936 min
 Delta R.T.: -0.018 min
 Response: 49003790
 Conc: 288.48 ng/ml



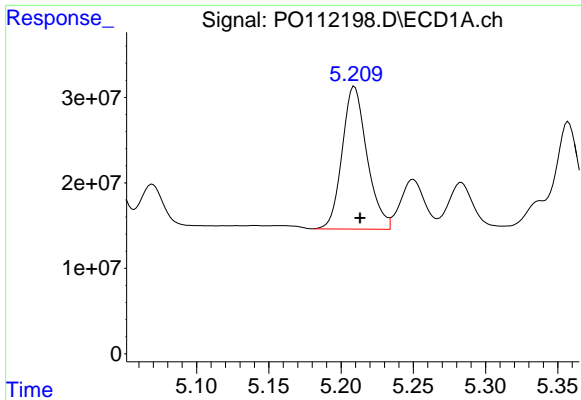
#6 AR-1016-4

R.T.: 4.955 min
 Delta R.T.: -0.002 min
 Response: 75983045
 Conc: 295.88 ng/ml



#6 AR-1016-4

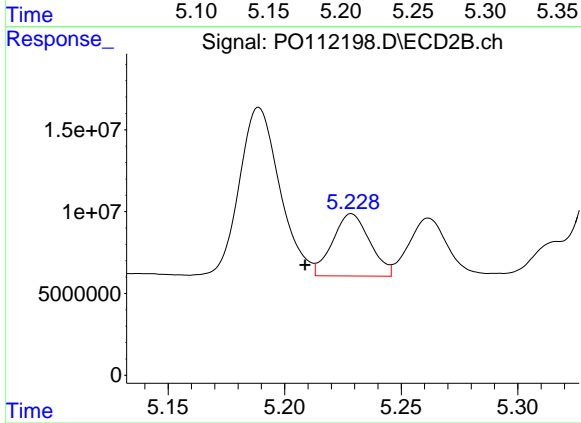
R.T.: 4.977 min
 Delta R.T.: -0.020 min
 Response: 97204224
 Conc: 708.34 ng/ml



#7 AR-1016-5

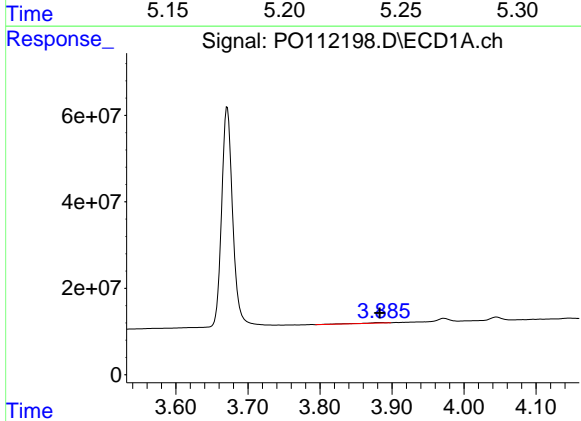
R.T.: 5.209 min
 Delta R.T.: -0.004 min
 Response: 199026885
 Conc: 727.27 ng/ml

Instrument :
 ECD_O
 ClientSampleId :
 AR1248CCC500



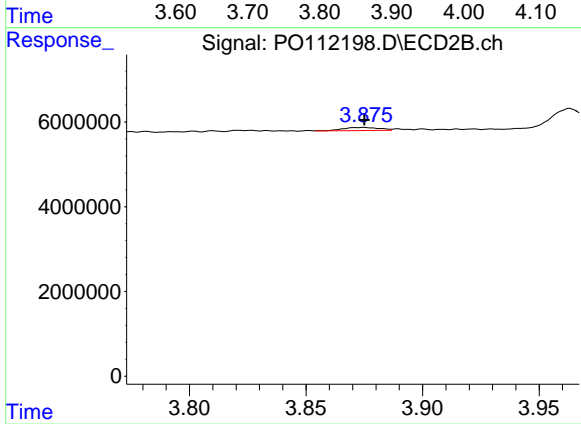
#7 AR-1016-5

R.T.: 5.229 min
 Delta R.T.: 0.020 min
 Response: 42234380
 Conc: 244.91 ng/ml



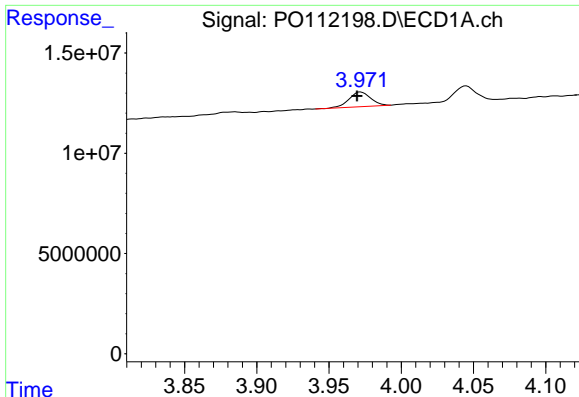
#8 AR-1221-1

R.T.: 3.885 min
 Delta R.T.: 0.002 min
 Response: 2066236
 Conc: 17.72 ng/ml



#8 AR-1221-1

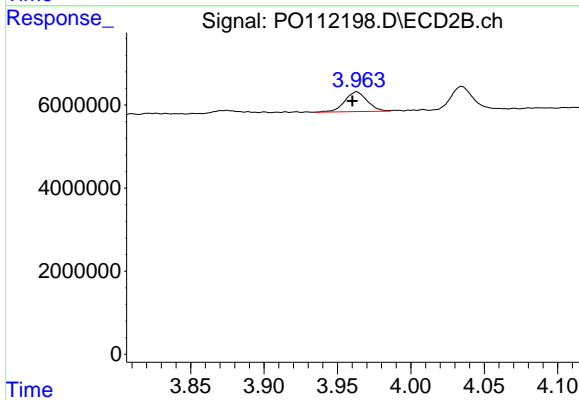
R.T.: 3.875 min
 Delta R.T.: 0.000 min
 Response: 815406
 Conc: 9.91 ng/ml



#9 AR-1221-2

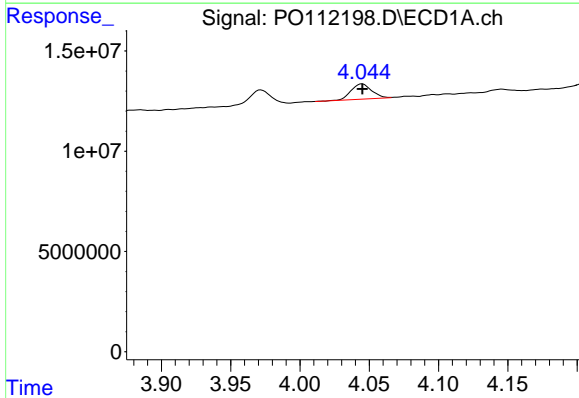
R.T.: 3.972 min
 Delta R.T.: 0.002 min
 Response: 7653646
 Conc: 97.08 ng/ml

Instrument :
 ECD_O
 ClientSampleId :
 AR1248CCC500



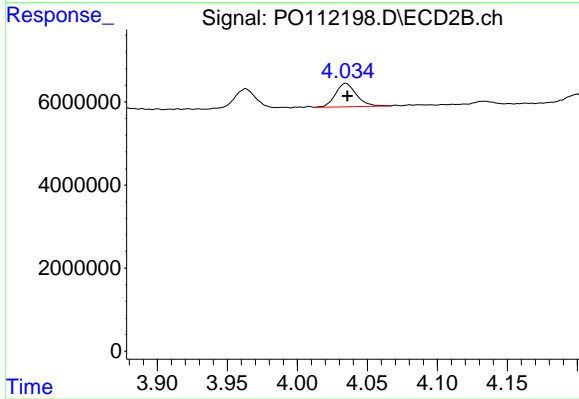
#9 AR-1221-2

R.T.: 3.963 min
 Delta R.T.: 0.003 min
 Response: 5069746
 Conc: 85.42 ng/ml



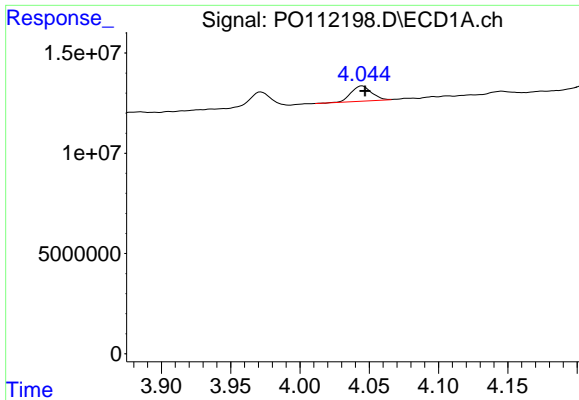
#10 AR-1221-3

R.T.: 4.045 min
 Delta R.T.: 0.000 min
 Response: 7803393
 Conc: 28.95 ng/ml



#10 AR-1221-3

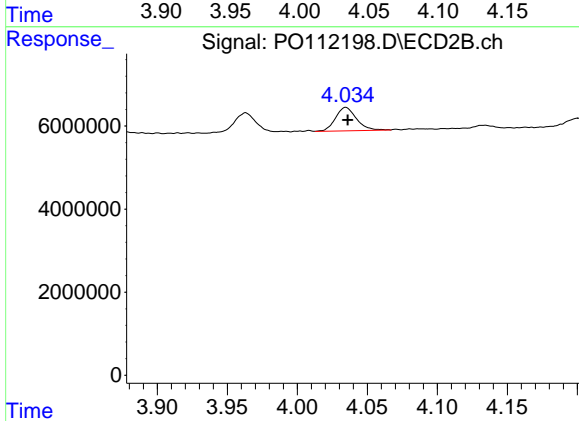
R.T.: 4.035 min
 Delta R.T.: -0.001 min
 Response: 5924943
 Conc: 31.39 ng/ml



#11 AR-1232-1

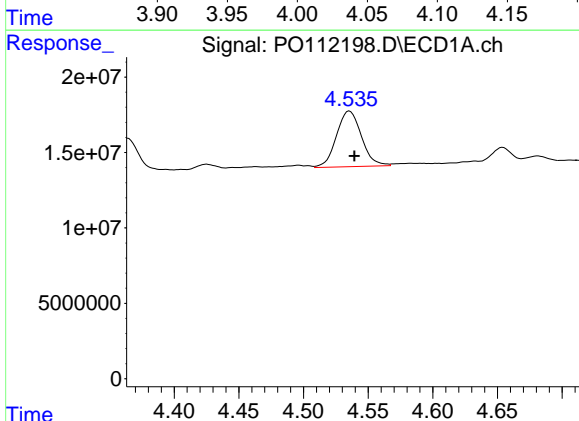
R.T.: 4.045 min
 Delta R.T.: -0.002 min
 Response: 7803393
 Conc: 36.35 ng/ml

Instrument :
 ECD_O
 ClientSampleId :
 AR1248CCC500



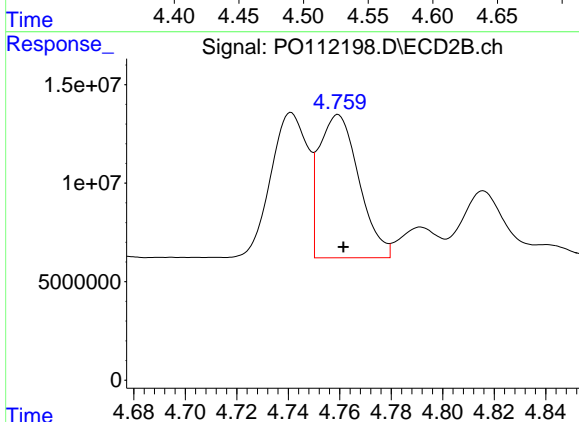
#11 AR-1232-1

R.T.: 4.035 min
 Delta R.T.: -0.001 min
 Response: 5924943
 Conc: 39.47 ng/ml



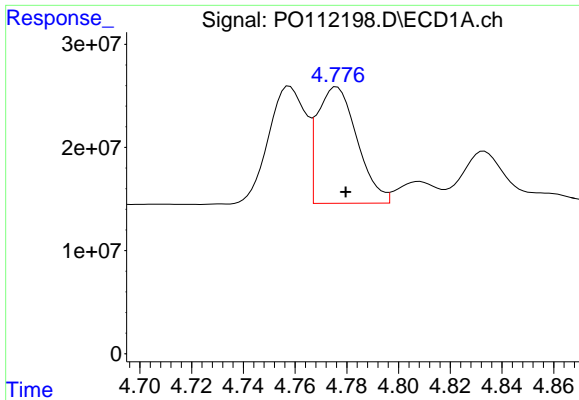
#12 AR-1232-2

R.T.: 4.536 min
 Delta R.T.: -0.004 min
 Response: 49679430
 Conc: 437.18 ng/ml



#12 AR-1232-2

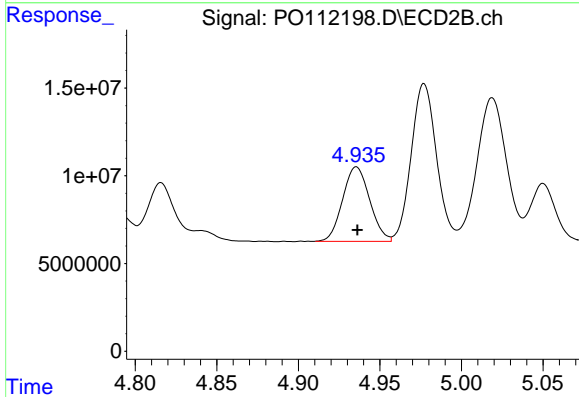
R.T.: 4.759 min
 Delta R.T.: -0.002 min
 Response: 78165809
 Conc: 510.60 ng/ml



#13 AR-1232-3

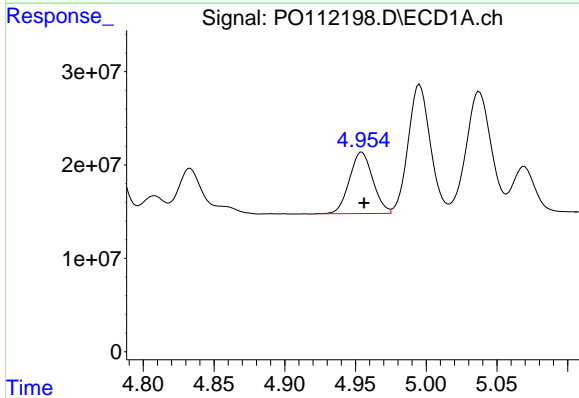
R.T.: 4.776 min
 Delta R.T.: -0.003 min
 Response: 120755998
 Conc: 527.30 ng/ml

Instrument :
 ECD_O
 ClientSampleId :
 AR1248CCC500



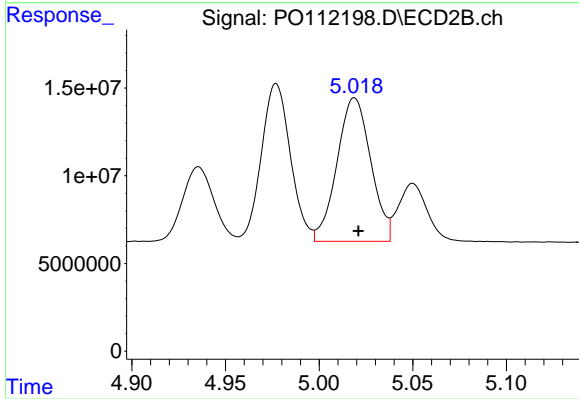
#13 AR-1232-3

R.T.: 4.936 min
 Delta R.T.: 0.000 min
 Response: 49003790
 Conc: 649.00 ng/ml



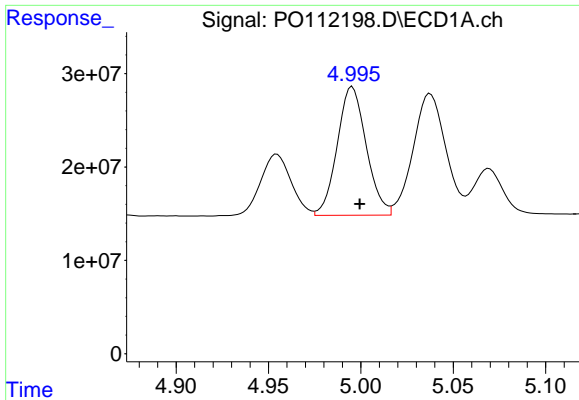
#14 AR-1232-4

R.T.: 4.955 min
 Delta R.T.: -0.002 min
 Response: 75983045
 Conc: 664.79 ng/ml



#14 AR-1232-4

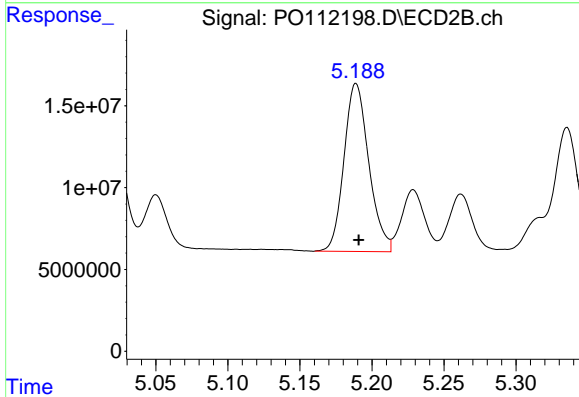
R.T.: 5.019 min
 Delta R.T.: -0.002 min
 Response: 102702467
 Conc: 1556.38 ng/ml



#15 AR-1232-5

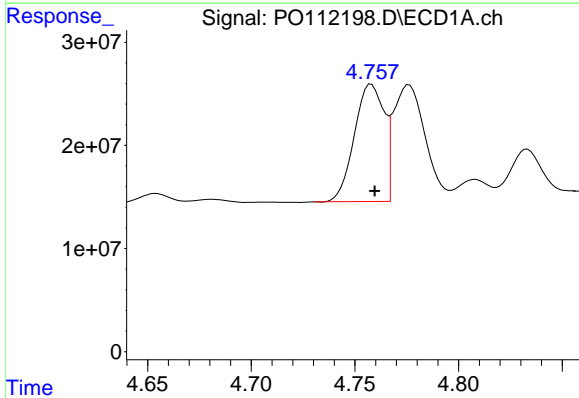
R.T.: 4.995 min
 Delta R.T.: -0.004 min
 Response: 150559702
 Conc: 2051.22 ng/ml

Instrument :
 ECD_O
 ClientSampleId :
 AR1248CCC500



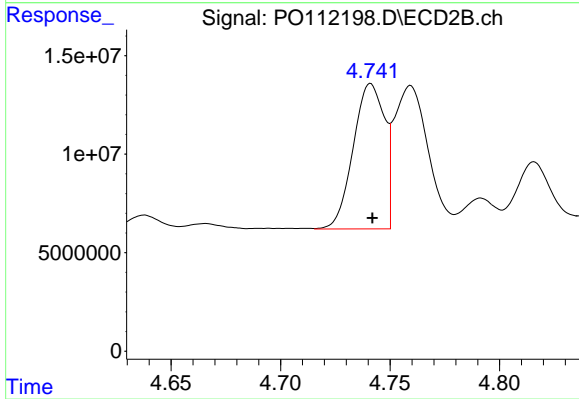
#15 AR-1232-5

R.T.: 5.189 min
 Delta R.T.: -0.002 min
 Response: 123168586
 Conc: 1658.61 ng/ml



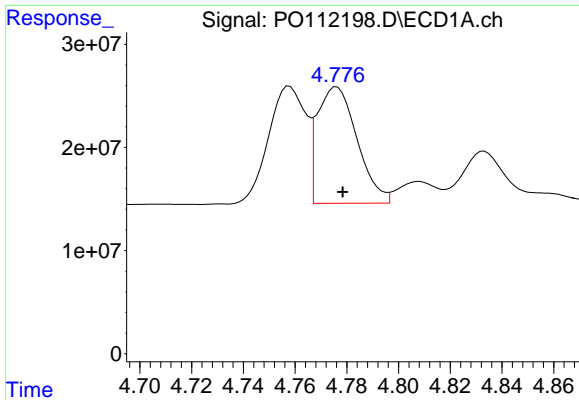
#16 AR-1242-1

R.T.: 4.758 min
 Delta R.T.: -0.002 min
 Response: 113421065
 Conc: 391.60 ng/ml



#16 AR-1242-1

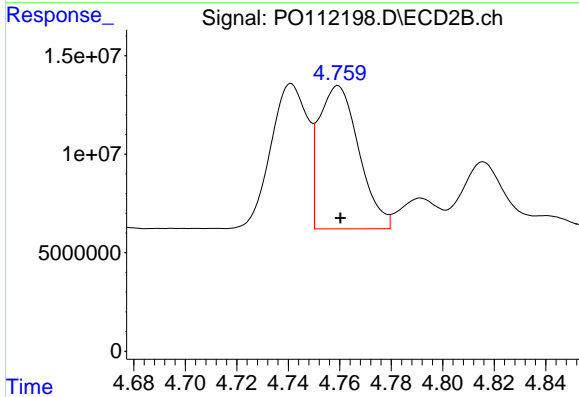
R.T.: 4.741 min
 Delta R.T.: 0.000 min
 Response: 73279354
 Conc: 378.00 ng/ml



#17 AR-1242-2

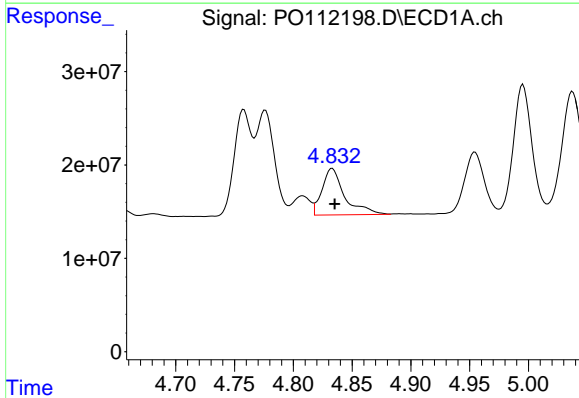
R.T.: 4.776 min
 Delta R.T.: -0.002 min
 Response: 120755998
 Conc: 283.52 ng/ml

Instrument :
 ECD_O
 ClientSampleId :
 AR1248CCC500



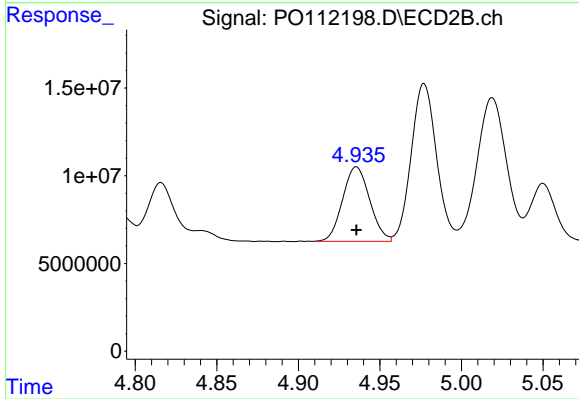
#17 AR-1242-2

R.T.: 4.759 min
 Delta R.T.: 0.000 min
 Response: 78165809
 Conc: 275.86 ng/ml



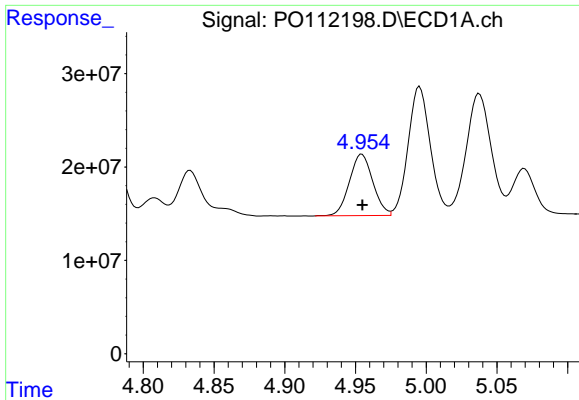
#18 AR-1242-3

R.T.: 4.833 min
 Delta R.T.: -0.002 min
 Response: 66649193
 Conc: 243.52 ng/ml



#18 AR-1242-3

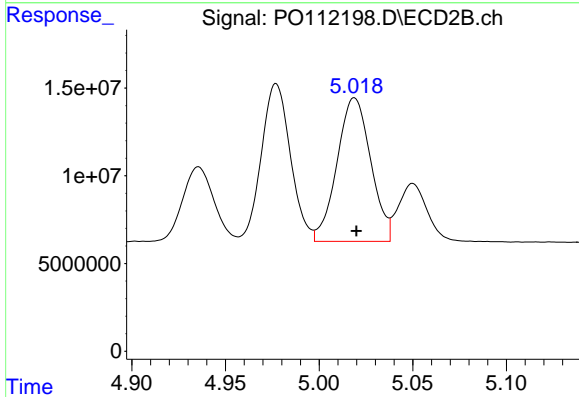
R.T.: 4.936 min
 Delta R.T.: 0.000 min
 Response: 49003790
 Conc: 336.39 ng/ml



#19 AR-1242-4

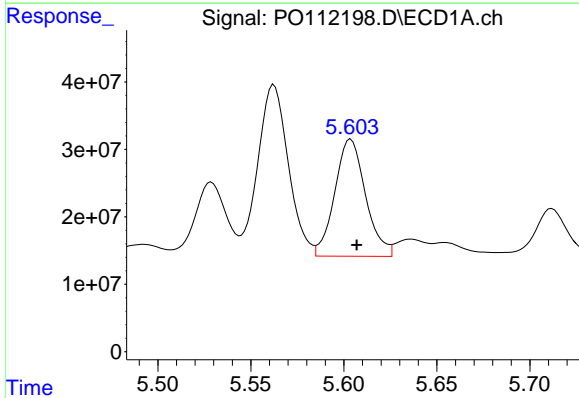
R.T.: 4.955 min
 Delta R.T.: 0.000 min
 Response: 75983045
 Conc: 337.23 ng/ml

Instrument :
 ECD_O
 ClientSampleId :
 AR1248CCC500



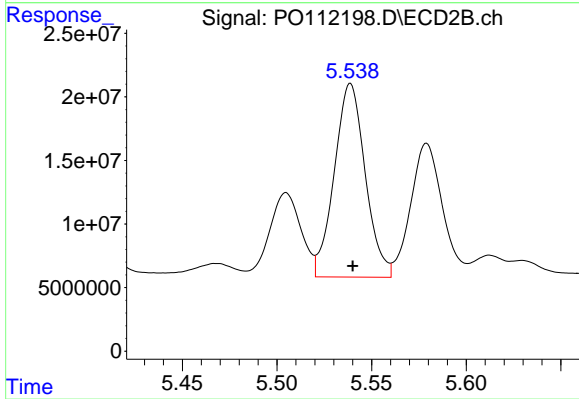
#19 AR-1242-4

R.T.: 5.019 min
 Delta R.T.: -0.001 min
 Response: 102702467
 Conc: 724.07 ng/ml



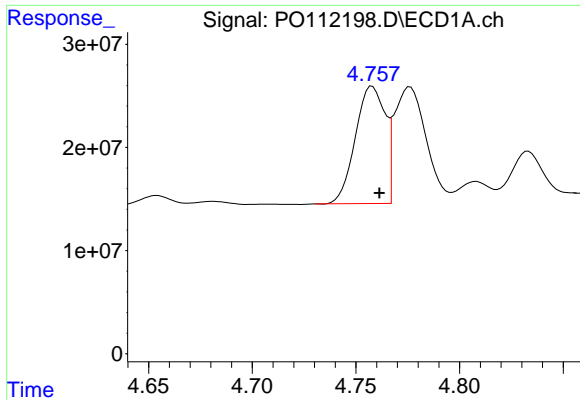
#20 AR-1242-5

R.T.: 5.604 min
 Delta R.T.: -0.003 min
 Response: 200471526
 Conc: 947.09 ng/ml



#20 AR-1242-5

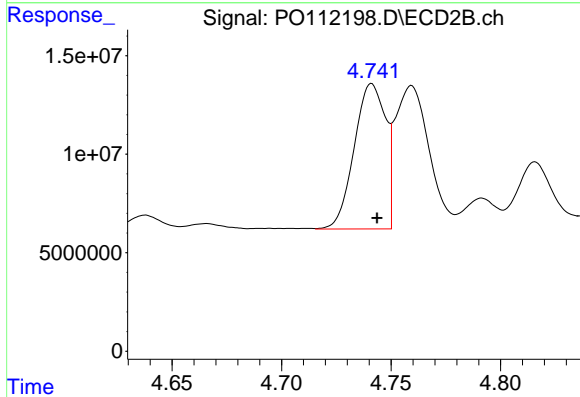
R.T.: 5.539 min
 Delta R.T.: -0.001 min
 Response: 173283336
 Conc: 953.50 ng/ml



#21 AR-1248-1

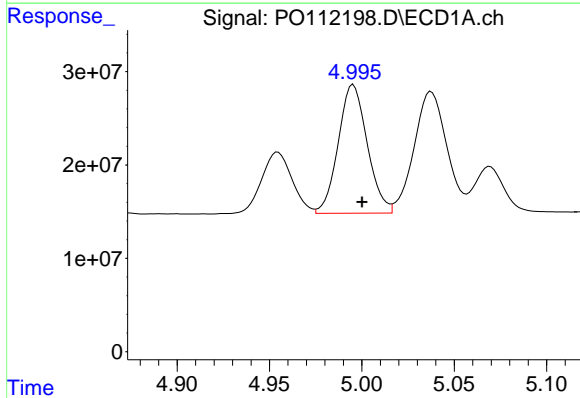
R.T.: 4.758 min
 Delta R.T.: -0.003 min
 Response: 113421065
 Conc: 499.87 ng/ml

Instrument :
 ECD_O
 ClientSampleId :
 AR1248CCC500



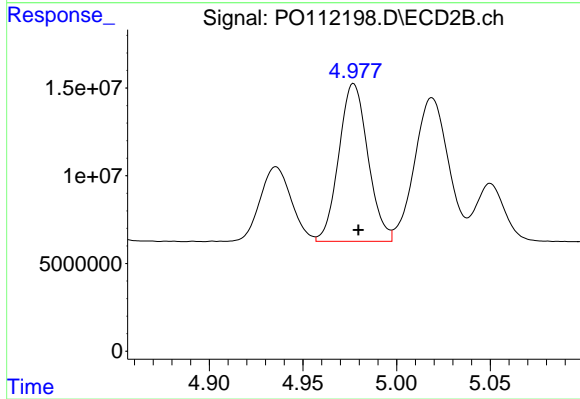
#21 AR-1248-1

R.T.: 4.741 min
 Delta R.T.: -0.002 min
 Response: 73279354
 Conc: 474.71 ng/ml



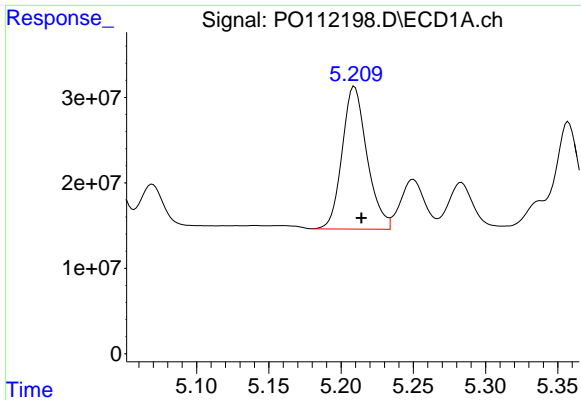
#22 AR-1248-2

R.T.: 4.995 min
 Delta R.T.: -0.005 min
 Response: 150559702
 Conc: 488.31 ng/ml



#22 AR-1248-2

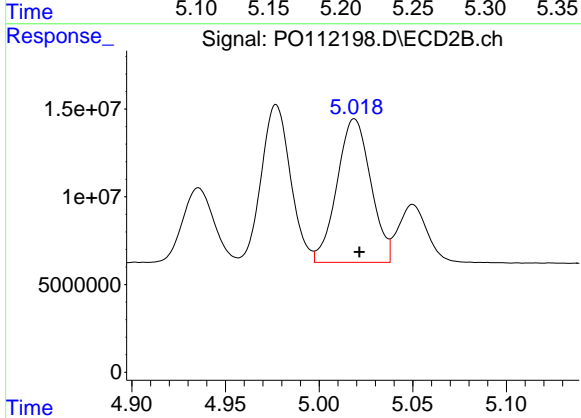
R.T.: 4.977 min
 Delta R.T.: -0.003 min
 Response: 97204224
 Conc: 472.40 ng/ml



#23 AR-1248-3

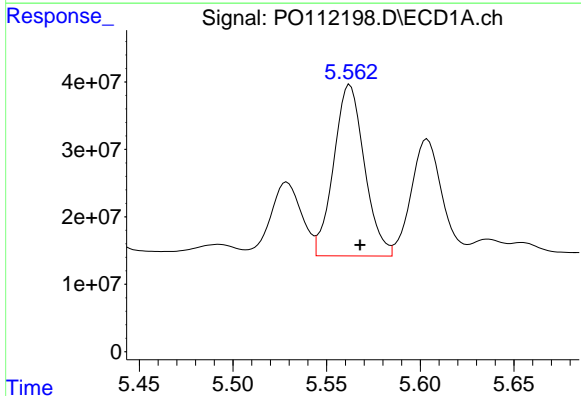
R.T.: 5.209 min
 Delta R.T.: -0.005 min
 Response: 199026885
 Conc: 488.63 ng/ml

Instrument :
 ECD_O
 ClientSampleId :
 AR1248CCC500



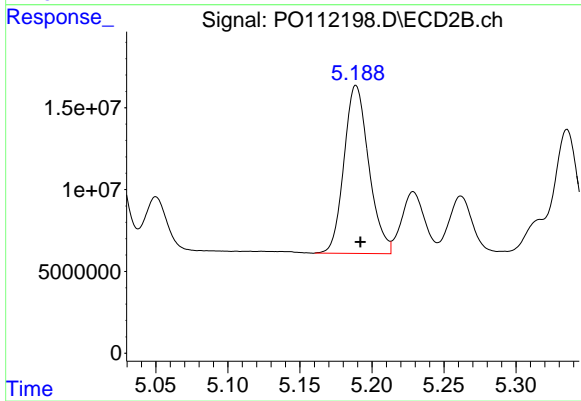
#23 AR-1248-3

R.T.: 5.019 min
 Delta R.T.: -0.003 min
 Response: 102702467
 Conc: 478.13 ng/ml



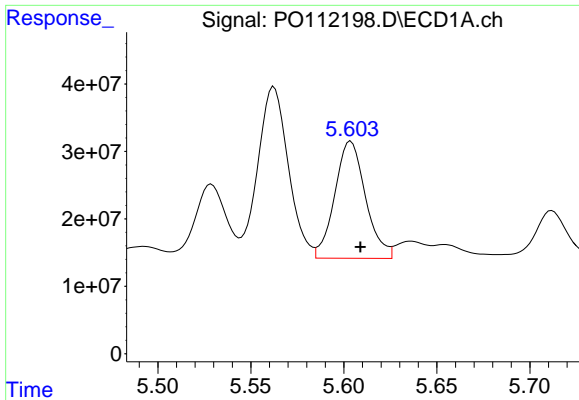
#24 AR-1248-4

R.T.: 5.562 min
 Delta R.T.: -0.005 min
 Response: 290547581
 Conc: 503.42 ng/ml



#24 AR-1248-4

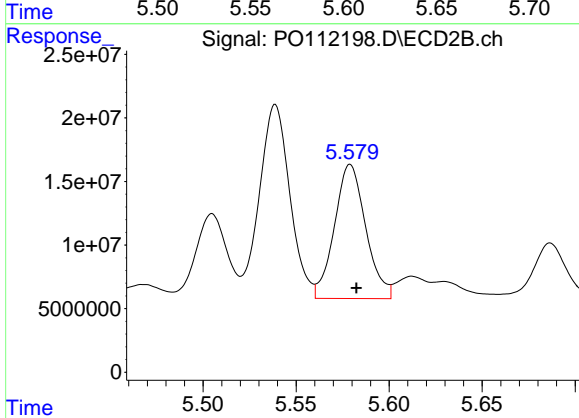
R.T.: 5.189 min
 Delta R.T.: -0.003 min
 Response: 123168586
 Conc: 476.06 ng/ml



#25 AR-1248-5

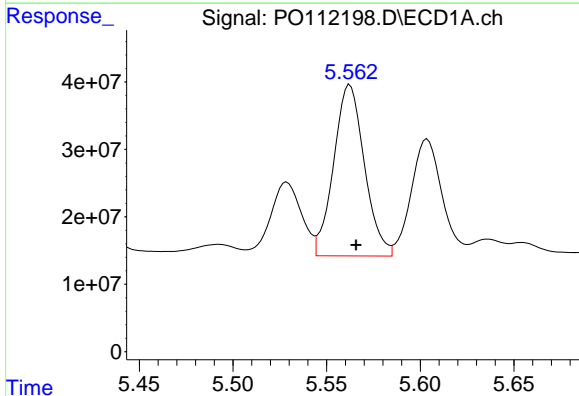
R.T.: 5.604 min
 Delta R.T.: -0.005 min
 Response: 200471526
 Conc: 513.63 ng/ml

Instrument :
 ECD_O
 ClientSampleId :
 AR1248CCC500



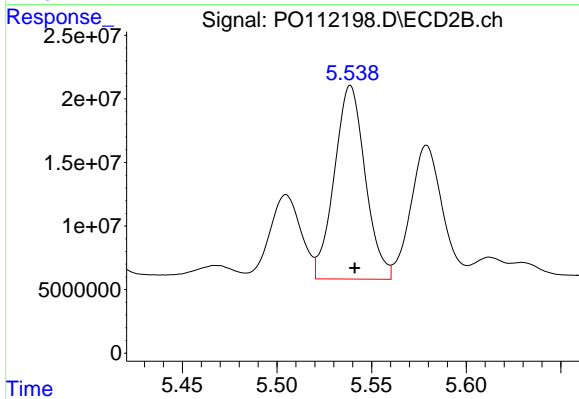
#25 AR-1248-5

R.T.: 5.579 min
 Delta R.T.: -0.003 min
 Response: 123687432
 Conc: 493.66 ng/ml



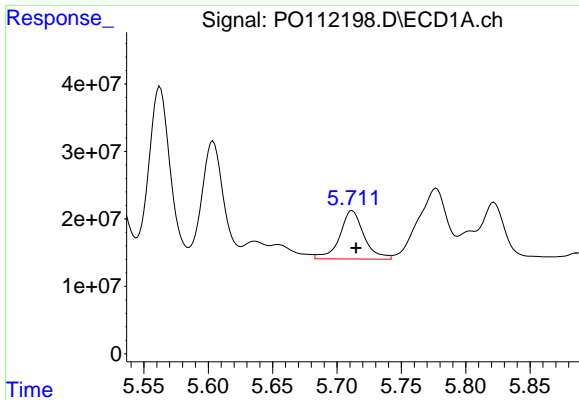
#26 AR-1254-1

R.T.: 5.562 min
 Delta R.T.: -0.003 min
 Response: 290547581
 Conc: 472.35 ng/ml



#26 AR-1254-1

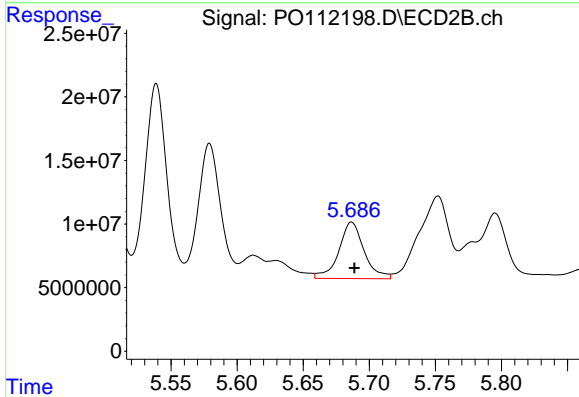
R.T.: 5.539 min
 Delta R.T.: -0.002 min
 Response: 173283336
 Conc: 454.61 ng/ml



#27 AR-1254-2

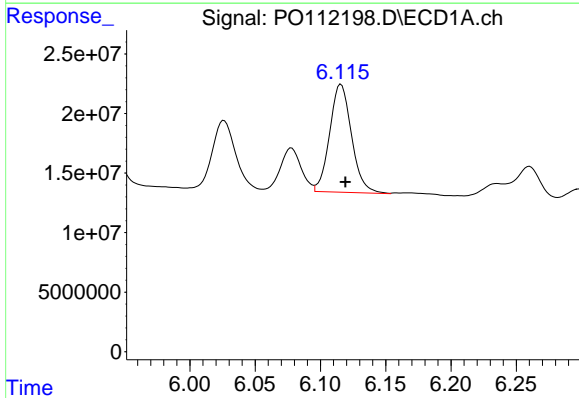
R.T.: 5.712 min
 Delta R.T.: -0.003 min
 Response: 94218822
 Conc: 175.88 ng/ml

Instrument :
 ECD_O
 ClientSampleId :
 AR1248CCC500



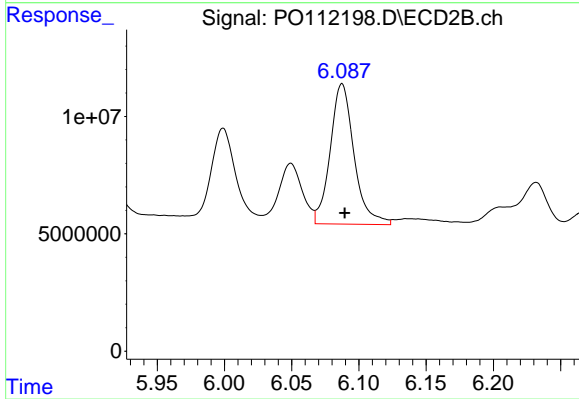
#27 AR-1254-2

R.T.: 5.687 min
 Delta R.T.: -0.002 min
 Response: 58955542
 Conc: 177.68 ng/ml



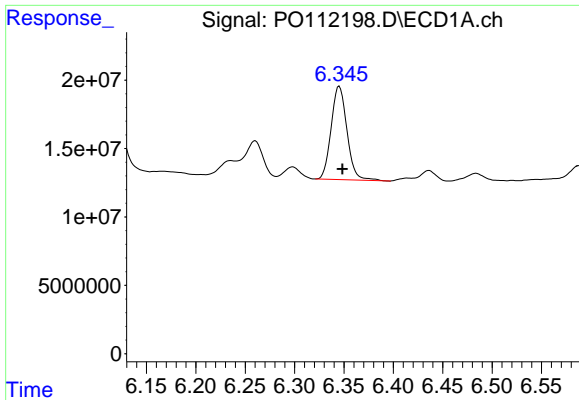
#28 AR-1254-3

R.T.: 6.116 min
 Delta R.T.: -0.003 min
 Response: 105957838
 Conc: 126.20 ng/ml



#28 AR-1254-3

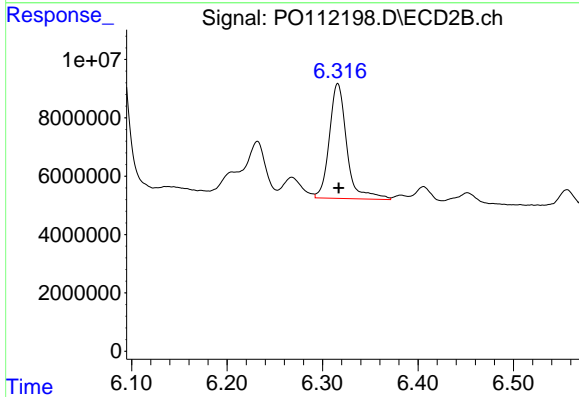
R.T.: 6.087 min
 Delta R.T.: -0.002 min
 Response: 73551176
 Conc: 152.58 ng/ml



#29 AR-1254-4

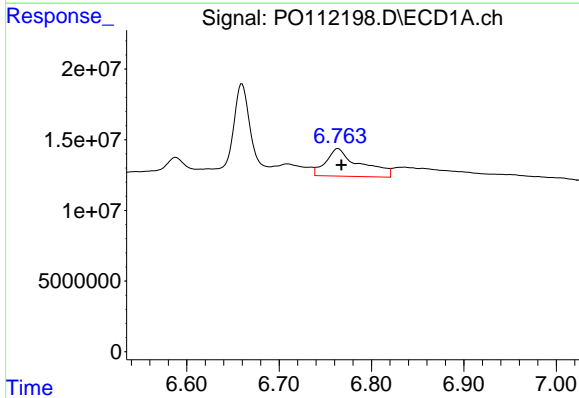
R.T.: 6.345 min
 Delta R.T.: -0.003 min
 Response: 76200830
 Conc: 158.42 ng/ml

Instrument :
 ECD_O
 ClientSampleId :
 AR1248CCC500



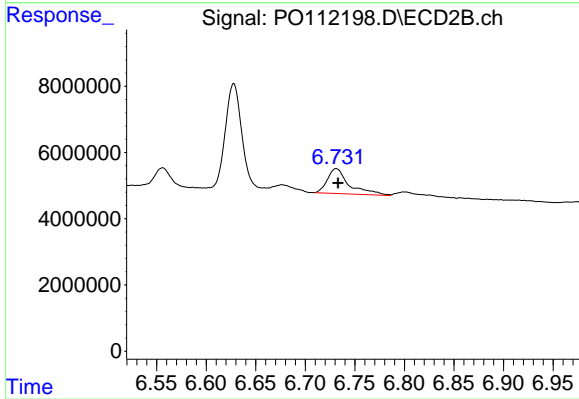
#29 AR-1254-4

R.T.: 6.316 min
 Delta R.T.: 0.000 min
 Response: 50018529
 Conc: 191.87 ng/ml



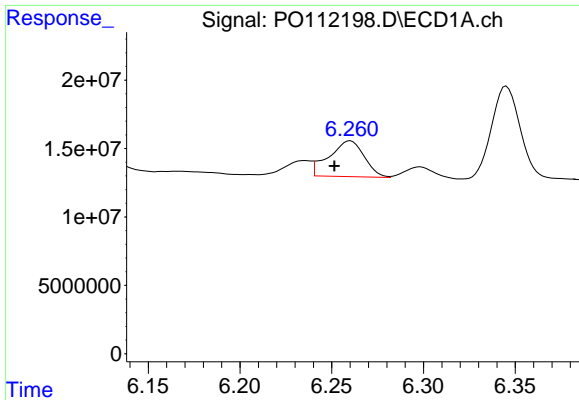
#30 AR-1254-5

R.T.: 6.764 min
 Delta R.T.: -0.004 min
 Response: 50077430
 Conc: 64.70 ng/ml



#30 AR-1254-5

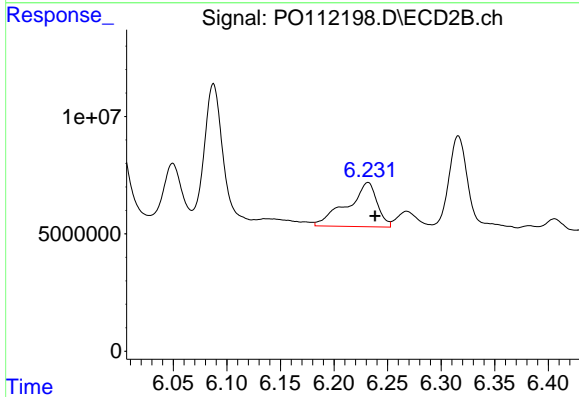
R.T.: 6.731 min
 Delta R.T.: -0.002 min
 Response: 11552521
 Conc: 32.42 ng/ml



#31 AR-1260-1

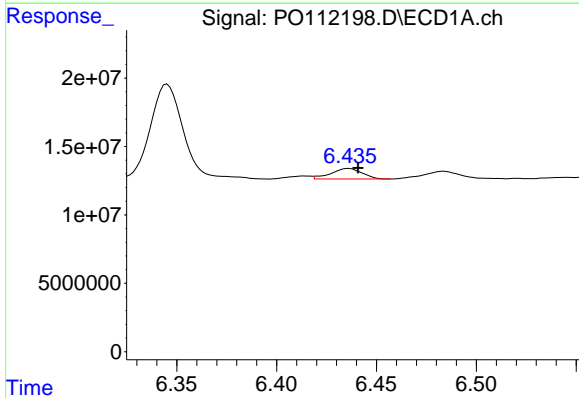
R.T.: 6.260 min
 Delta R.T.: 0.009 min
 Response: 34949474
 Conc: 69.73 ng/ml

Instrument :
 ECD_O
 ClientSampleId :
 AR1248CCC500



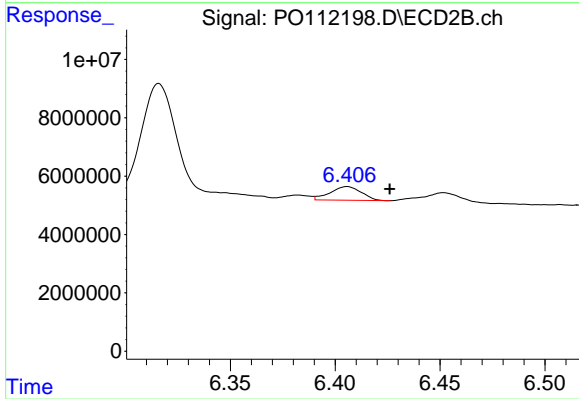
#31 AR-1260-1

R.T.: 6.232 min
 Delta R.T.: -0.006 min
 Response: 36592482
 Conc: 130.43 ng/ml



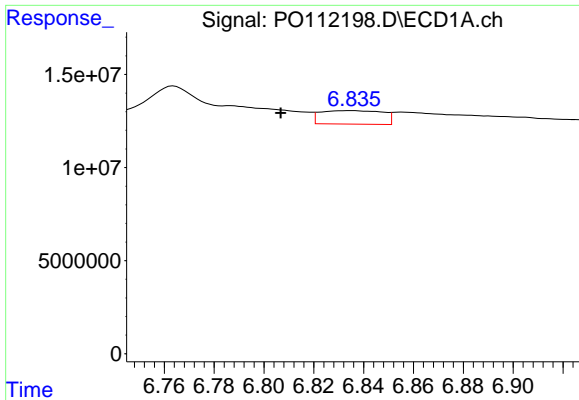
#32 AR-1260-2

R.T.: 6.436 min
 Delta R.T.: -0.005 min
 Response: 8351234
 Conc: 11.31 ng/ml



#32 AR-1260-2

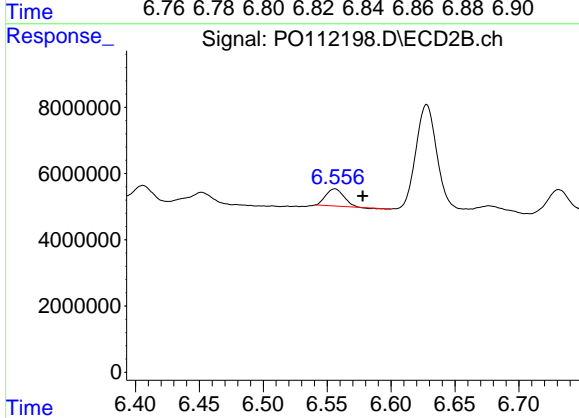
R.T.: 6.406 min
 Delta R.T.: -0.020 min
 Response: 4885212
 Conc: 14.37 ng/ml



#33 AR-1260-3

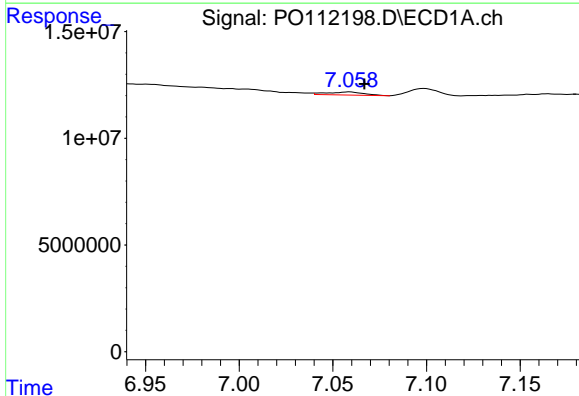
R.T.: 6.836 min
 Delta R.T.: 0.029 min
 Response: 12651130
 Conc: 19.30 ng/ml

Instrument :
 ECD_O
 ClientSampleId :
 AR1248CCC500



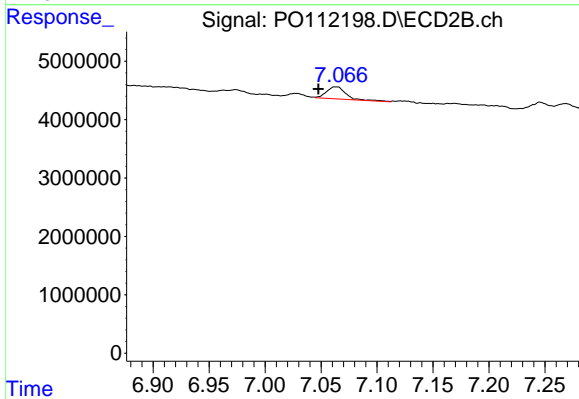
#33 AR-1260-3

R.T.: 6.556 min
 Delta R.T.: -0.022 min
 Response: 4982256
 Conc: 18.08 ng/ml



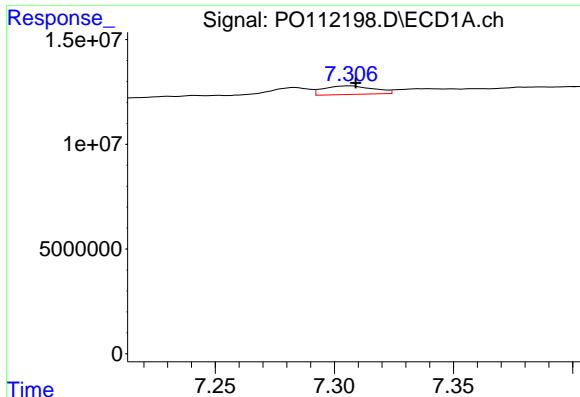
#34 AR-1260-4

R.T.: 7.059 min
 Delta R.T.: -0.008 min
 Response: 1967071
 Conc: 4.52 ng/ml



#34 AR-1260-4

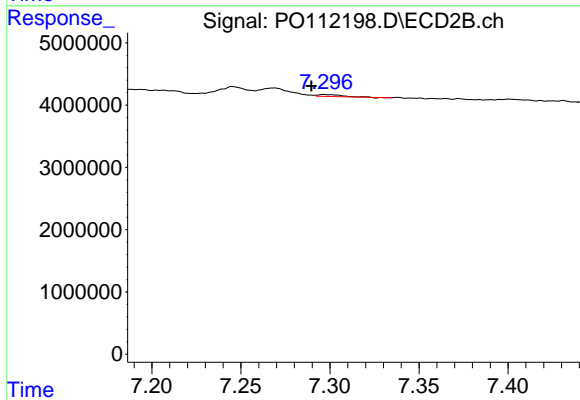
R.T.: 7.063 min
 Delta R.T.: 0.016 min
 Response: 2550125
 Conc: 12.71 ng/ml



#35 AR-1260-5

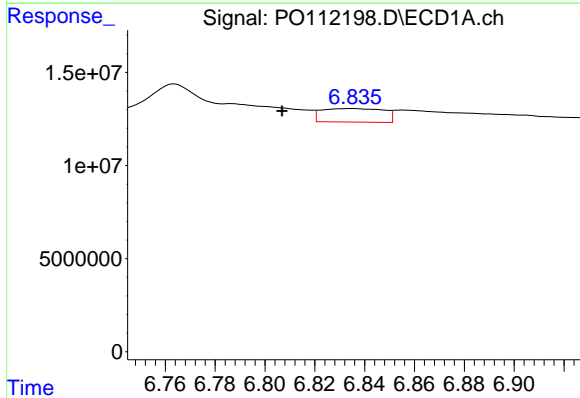
R.T.: 7.306 min
 Delta R.T.: -0.002 min
 Response: 5981098
 Conc: 4.74 ng/ml

Instrument :
 ECD_O
 ClientSampleId :
 AR1248CCC500



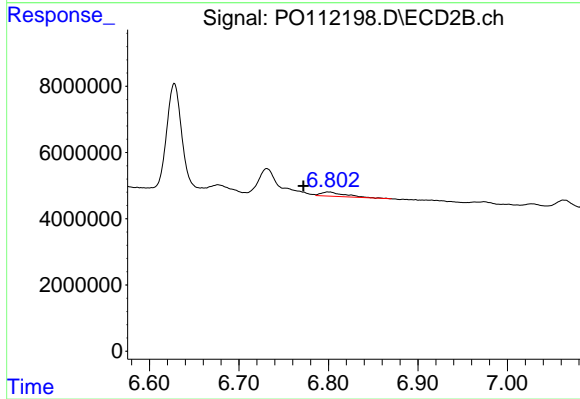
#35 AR-1260-5

R.T.: 7.297 min
 Delta R.T.: 0.007 min
 Response: 293939
 Conc: 0.66 ng/ml



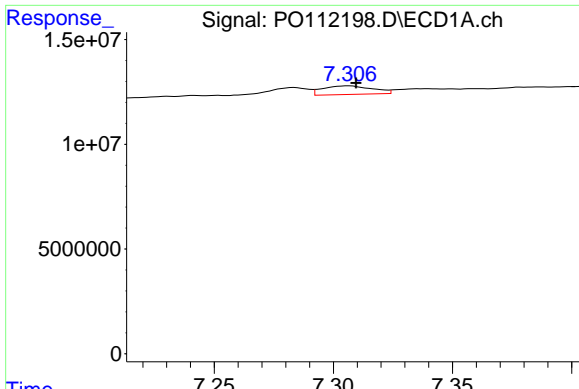
#36 AR-1262-1

R.T.: 6.836 min
 Delta R.T.: 0.029 min
 Response: 12651130
 Conc: 12.38 ng/ml



#36 AR-1262-1

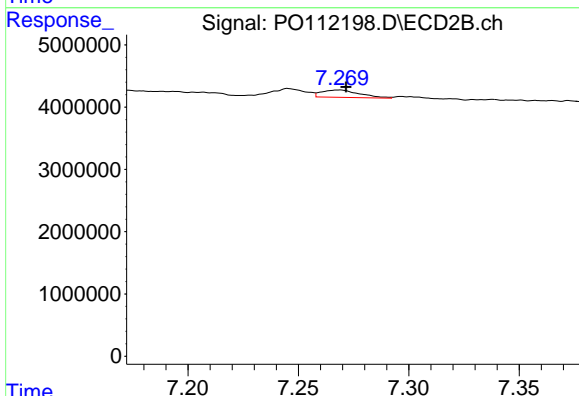
R.T.: 6.800 min
 Delta R.T.: 0.028 min
 Response: 2238915
 Conc: 5.50 ng/ml



#37 AR-1262-2

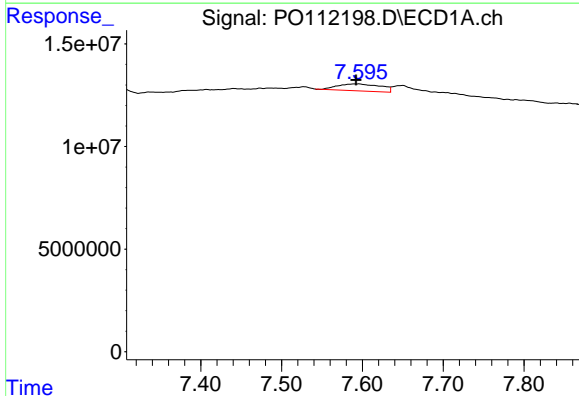
R.T.: 7.306 min
 Delta R.T.: -0.003 min
 Response: 5981098
 Conc: 3.65 ng/ml

Instrument : ECD_O
 ClientSampleId : AR1248CCC500



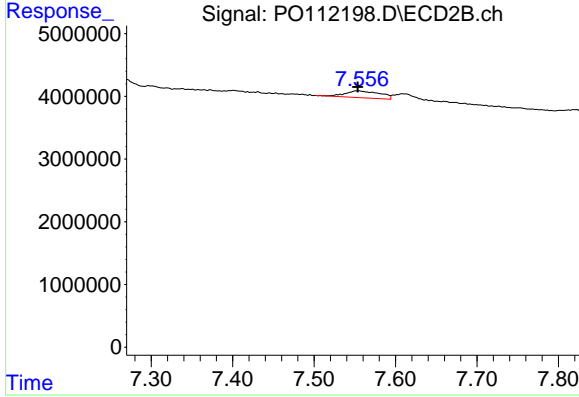
#37 AR-1262-2

R.T.: 7.269 min
 Delta R.T.: -0.003 min
 Response: 1398689
 Conc: 2.73 ng/ml



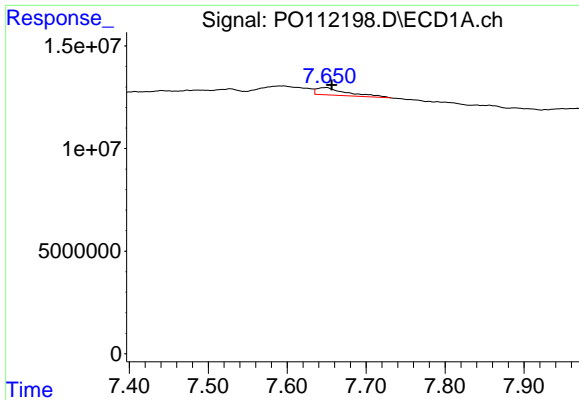
#38 AR-1262-3

R.T.: 7.596 min
 Delta R.T.: 0.004 min
 Response: 12565022
 Conc: 19.57 ng/ml



#38 AR-1262-3

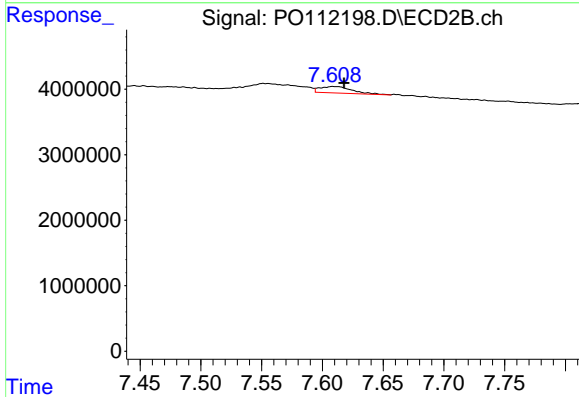
R.T.: 7.551 min
 Delta R.T.: -0.002 min
 Response: 3303745
 Conc: 18.40 ng/ml



#39 AR-1262-4

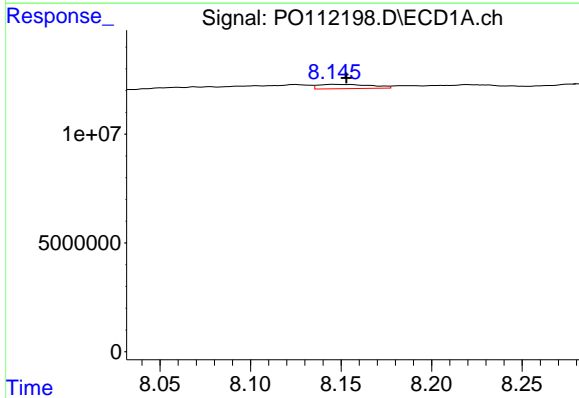
R.T.: 7.650 min
 Delta R.T.: -0.006 min
 Response: 9423823
 Conc: 8.80 ng/ml

Instrument :
 ECD_O
 ClientSampleId :
 AR1248CCC500



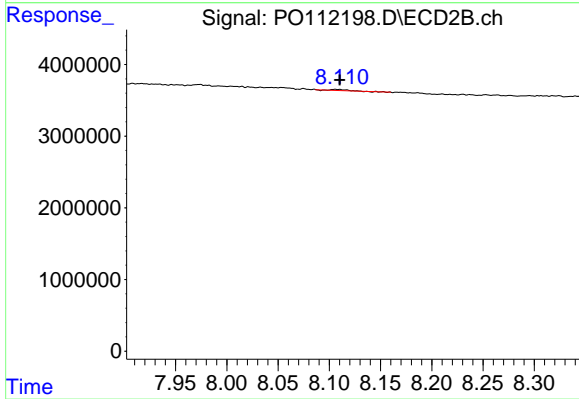
#39 AR-1262-4

R.T.: 7.609 min
 Delta R.T.: -0.009 min
 Response: 1817224
 Conc: 6.25 ng/ml



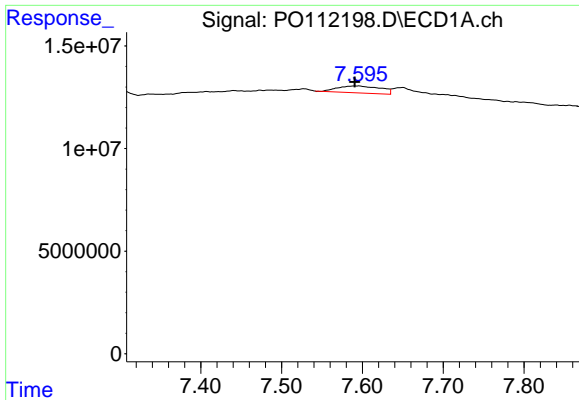
#40 AR-1262-5

R.T.: 8.146 min
 Delta R.T.: -0.007 min
 Response: 3967850
 Conc: 8.85 ng/ml



#40 AR-1262-5

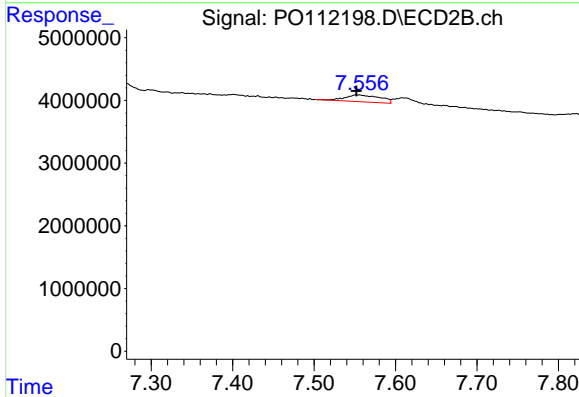
R.T.: 8.106 min
 Delta R.T.: -0.004 min
 Response: 123767
 Conc: 1.17 ng/ml



#41 AR-1268-1

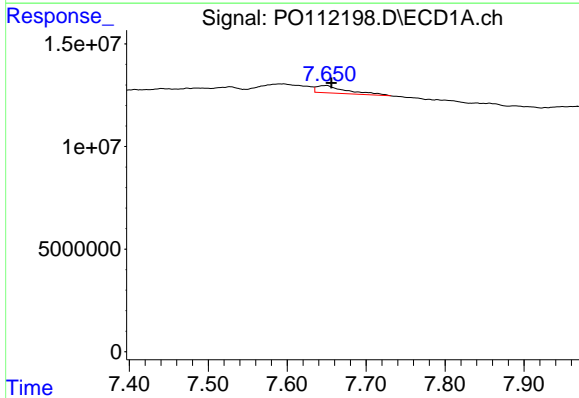
R.T.: 7.596 min
 Delta R.T.: 0.005 min
 Response: 12565022
 Conc: 6.84 ng/ml

Instrument :
 ECD_O
 ClientSampleId :
 AR1248CCC500



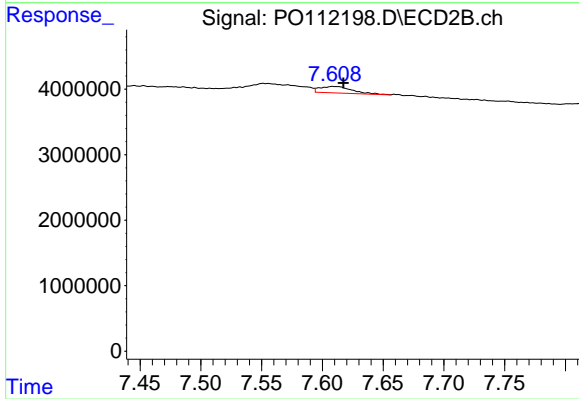
#41 AR-1268-1

R.T.: 7.551 min
 Delta R.T.: 0.000 min
 Response: 3303745
 Conc: 6.72 ng/ml



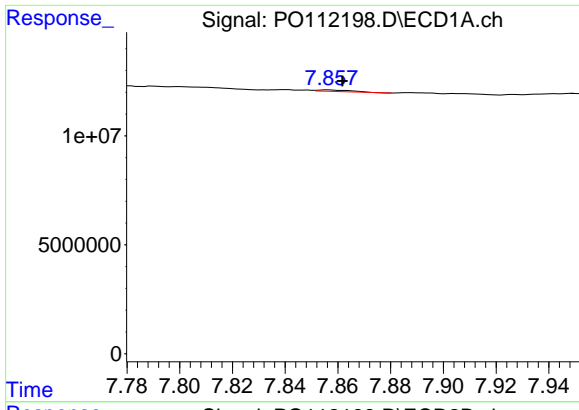
#42 AR-1268-2

R.T.: 7.650 min
 Delta R.T.: -0.006 min
 Response: 9423823
 Conc: 6.05 ng/ml



#42 AR-1268-2

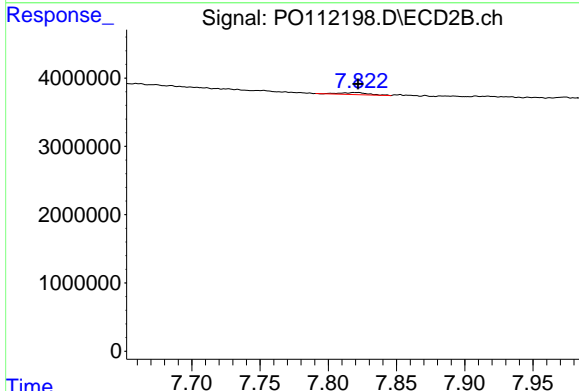
R.T.: 7.609 min
 Delta R.T.: -0.009 min
 Response: 1817224
 Conc: 4.36 ng/ml



#43 AR-1268-3

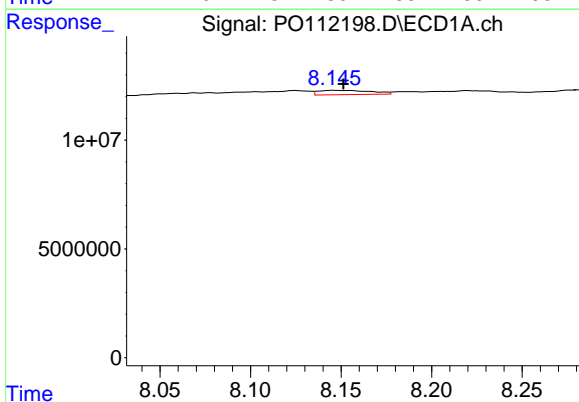
R.T.: 7.856 min
 Delta R.T.: -0.005 min
 Response: 625768
 Conc: 0.48 ng/ml

Instrument : ECD_O
 ClientSampleId : AR1248CCC500



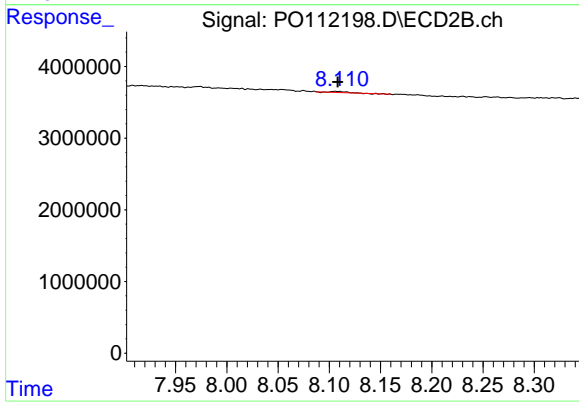
#43 AR-1268-3

R.T.: 7.820 min
 Delta R.T.: -0.002 min
 Response: 414589
 Conc: 1.31 ng/ml



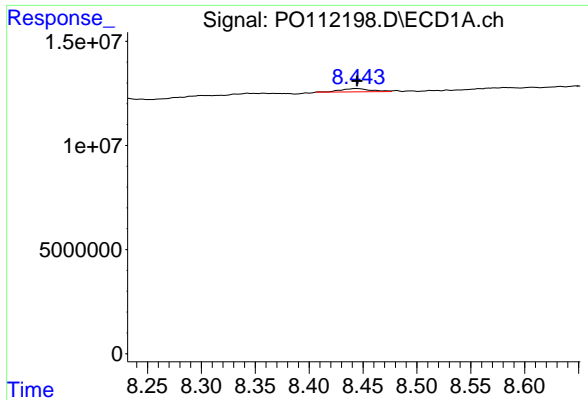
#44 AR-1268-4

R.T.: 8.146 min
 Delta R.T.: -0.005 min
 Response: 3967850
 Conc: 8.26 ng/ml



#44 AR-1268-4

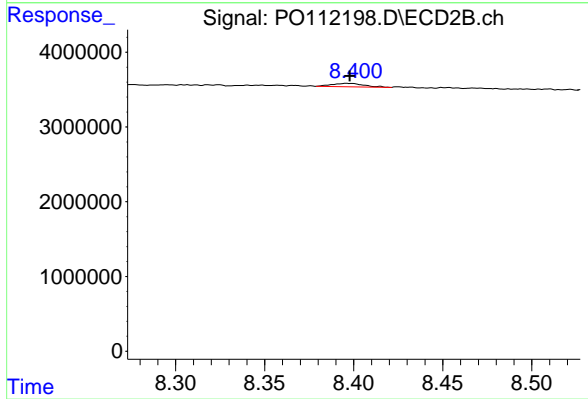
R.T.: 8.106 min
 Delta R.T.: -0.003 min
 Response: 123767
 Conc: 1.11 ng/ml



#45 AR-1268-5

R.T.: 8.444 min
 Delta R.T.: 0.000 min
 Response: 3202869
 Conc: 0.98 ng/ml

Instrument :
 ECD_O
 ClientSampleId :
 AR1248CCC500



#45 AR-1268-5

R.T.: 8.396 min
 Delta R.T.: -0.001 min
 Response: 589696
 Conc: 0.81 ng/ml