

Data Path : Z:\pestpcbsrv\HPCHEM1\ECD_0\Data\P0071025\
 Data File : PO112199.D
 Signal(s) : Signal #1: ECD1A.ch Signal #2: ECD2B.ch
 Acq On : 10 Jul 2025 18:47
 Operator : YP/AJ
 Sample : AR1254CCC500
 Misc :
 ALS Vial : 6 Sample Multiplier: 1

Instrument :
 ECD_0
 ClientSampleId :
 AR1254CCC500

Integration File signal 1: autoint1.e
 Integration File signal 2: autoint2.e
 Quant Time: Jul 10 22:55:32 2025
 Quant Method : Z:\pestpcbsrv\HPCHEM1\ECD_0\methods\P0070825.M
 Quant Title : GC EXTRACTABLES
 QLast Update : Wed Jul 09 10:50:50 2025
 Response via : Initial Calibration
 Integrator: ChemStation

Volume Inj. : 2 µl
 Signal #1 Phase : ZB-MR1 Signal #2 Phase: ZB-MR2
 Signal #1 Info : 30Mx0.32mmx 0.50µ Signal #2 Info : 30M x 0.32mm x 0.25µm

Compound	RT#1	RT#2	Resp#1	Resp#2	ng/ml	ng/ml
System Monitoring Compounds						
1) SA Tetrachlo...	3.671	3.665	619.2E6	382.2E6	62.574	59.989
2) SA Decachlor...	8.701	8.648	290.9E6	83116419	42.553	48.226
Target Compounds						
3) L1 AR-1016-1	4.759	4.759	5398750	3907709	15.873	17.536
4) L1 AR-1016-2	4.778	4.792	4679642	2265638	9.410	6.884 #
5) L1 AR-1016-3	4.834	4.937	3560085	1864009	10.998	10.973
6) L1 AR-1016-4	4.954	5.017	3266803	25472688	12.721	185.624 #
7) L1 AR-1016-5	5.210	5.229	91362985	6793143	333.854	39.392 #
8) L2 AR-1221-1	3.887	3.874	447910	65250	3.841	0.793 #
9) L2 AR-1221-2	3.973	3.963	7823907	5502774	99.237	92.712
10) L2 AR-1221-3	4.046	4.034	785461	928799	2.914	4.920 #
11) L3 AR-1232-1	4.046	4.034	785461	928799	3.659	6.188 #
12) L3 AR-1232-2	4.538	4.759	3532301	3907709	31.084	25.526
13) L3 AR-1232-3	4.778	4.937	4679642	1864009	20.434	24.687
14) L3 AR-1232-4	4.954	5.017	3266803	25472688	28.582	386.019 #
15) L3 AR-1232-5	4.997	5.189	125.8E6	54549192	1714.046	734.571 #
16) L4 AR-1242-1	4.759	4.739	5398750	4789729	18.640	24.707 #
17) L4 AR-1242-2	4.778	4.759	4679642	3907709	10.987	13.791 #
18) L4 AR-1242-3	4.834	4.937	3560085	1864009	13.008	12.795
19) L4 AR-1242-4	4.954	5.017	3266803	25472688	14.499	179.587 #
20) L4 AR-1242-5	5.605	5.540	44659158	206.4E6	210.984	1135.763 #
21) L5 AR-1248-1	4.759	4.739	5398750	4789729	23.794	31.028 #
22) L5 AR-1248-2	4.997	4.977	125.8E6	83998433	408.048	408.220
23) L5 AR-1248-3	5.210	5.017	91362985	25472688	224.303	118.589 #
24) L5 AR-1248-4	5.565	5.189	346.5E6	54549192	600.436	210.837 #
25) L5 AR-1248-5	5.605	5.580	44659158	28289154	114.421	112.908
26) L6 AR-1254-1	5.565	5.540	346.5E6	206.4E6	563.376	541.511
27) L6 AR-1254-2	5.714	5.687	303.2E6	176.0E6	566.091	530.281
28) L6 AR-1254-3	6.118	6.088	421.4E6	249.6E6	501.938	517.823
29) L6 AR-1254-4	6.348	6.316	281.7E6	147.6E6	585.559	566.102
30) L6 AR-1254-5	6.767	6.733	377.8E6	171.2E6	488.177	480.281
31) L7 AR-1260-1	6.249	6.219	186.8E6	113.9E6	372.706	405.816
32) L7 AR-1260-2	6.439	6.406	175.5E6	90833795	237.715	267.161
33) L7 AR-1260-3	6.836	6.557	34419613	70961521	52.510	257.493 #
34) L7 AR-1260-4	7.065	7.064	19078991	34362292	43.835	171.259 #
35) L7 AR-1260-5	7.307	7.299	39113438	5677324	30.980	12.680 #
36) L8 AR-1262-1	6.836	6.801	34419613	13610375	33.689	33.414
37) L8 AR-1262-2	7.307	7.270	39113438	15972263	23.859	31.162 #
38) L8 AR-1262-3	7.593	7.554	7002578	4153518	10.908	23.136 #
39) L8 AR-1262-4	7.652	7.612	38413664	12869890	35.853	44.239
40) L8 AR-1262-5	8.153	8.109	1254778	342210	2.800	3.235
41) L9 AR-1268-1	7.593	7.554	7002578	4153518	3.811	8.451 #

Data Path : Z:\pestpcbsrv\HPCHEM1\ECD_0\Data\P0071025\
 Data File : P0112199.D
 Signal(s) : Signal #1: ECD1A.ch Signal #2: ECD2B.ch
 Acq On : 10 Jul 2025 18:47
 Operator : YP/AJ
 Sample : AR1254CCC500
 Misc :
 ALS Vial : 6 Sample Multiplier: 1

Instrument :
 ECD_0
 ClientSampleId :
 AR1254CCC500

Integration File signal 1: autoint1.e
 Integration File signal 2: autoint2.e
 Quant Time: Jul 10 22:55:32 2025
 Quant Method : Z:\pestpcbsrv\HPCHEM1\ECD_0\methods\P0070825.M
 Quant Title : GC EXTRACTABLES
 QLast Update : Wed Jul 09 10:50:50 2025
 Response via : Initial Calibration
 Integrator: ChemStation

Volume Inj. : 2 µl
 Signal #1 Phase : ZB-MR1 Signal #2 Phase: ZB-MR2
 Signal #1 Info : 30Mx0.32mmx 0.50µ Signal #2 Info : 30M x 0.32mm x 0.25µm

	Compound	RT#1	RT#2	Resp#1	Resp#2	ng/ml	ng/ml
42)	L9 AR-1268-2	7.652	7.612	38413664	12869890	24.662	30.849 #
43)	L9 AR-1268-3	7.855	7.818	468255	268564	0.360	0.849 #
44)	L9 AR-1268-4	8.153	8.109	1254778	342210	2.612	3.069
45)	L9 AR-1268-5	8.446	8.397	1648928	533808	0.505	0.735 #

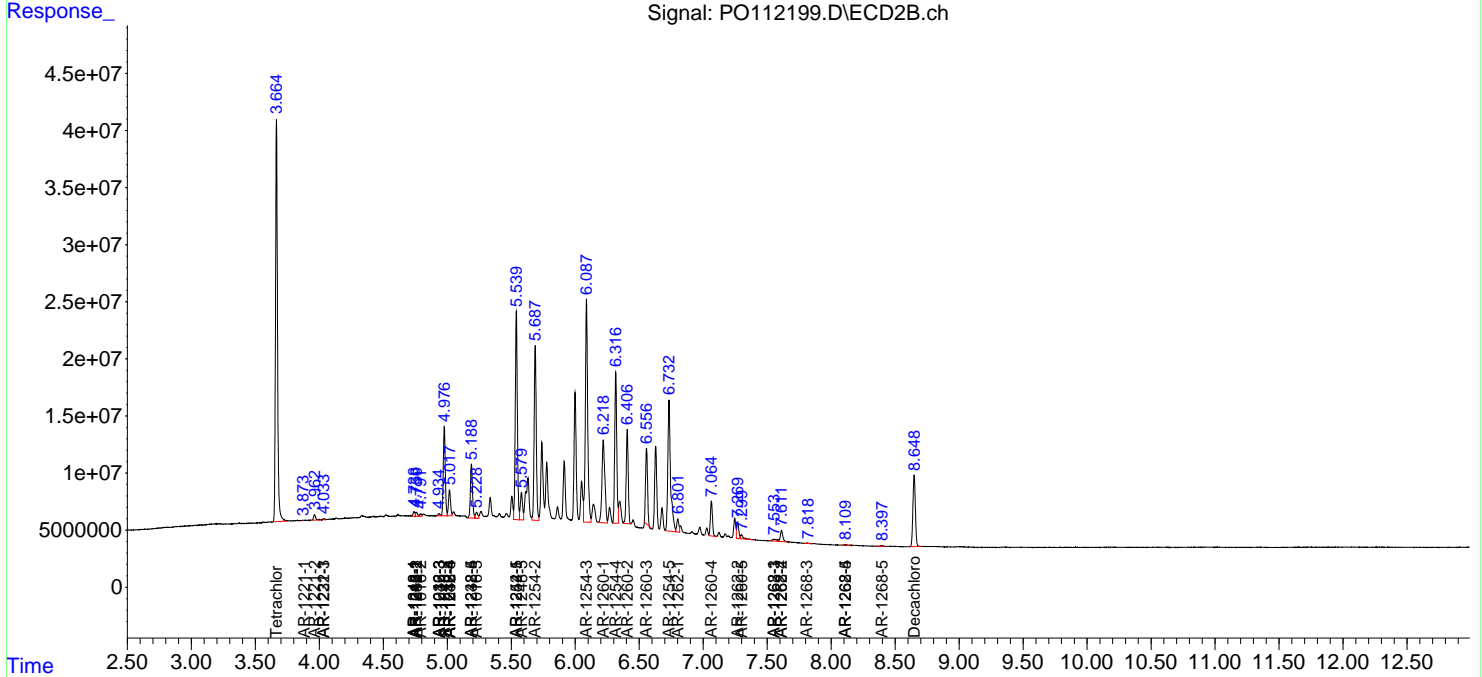
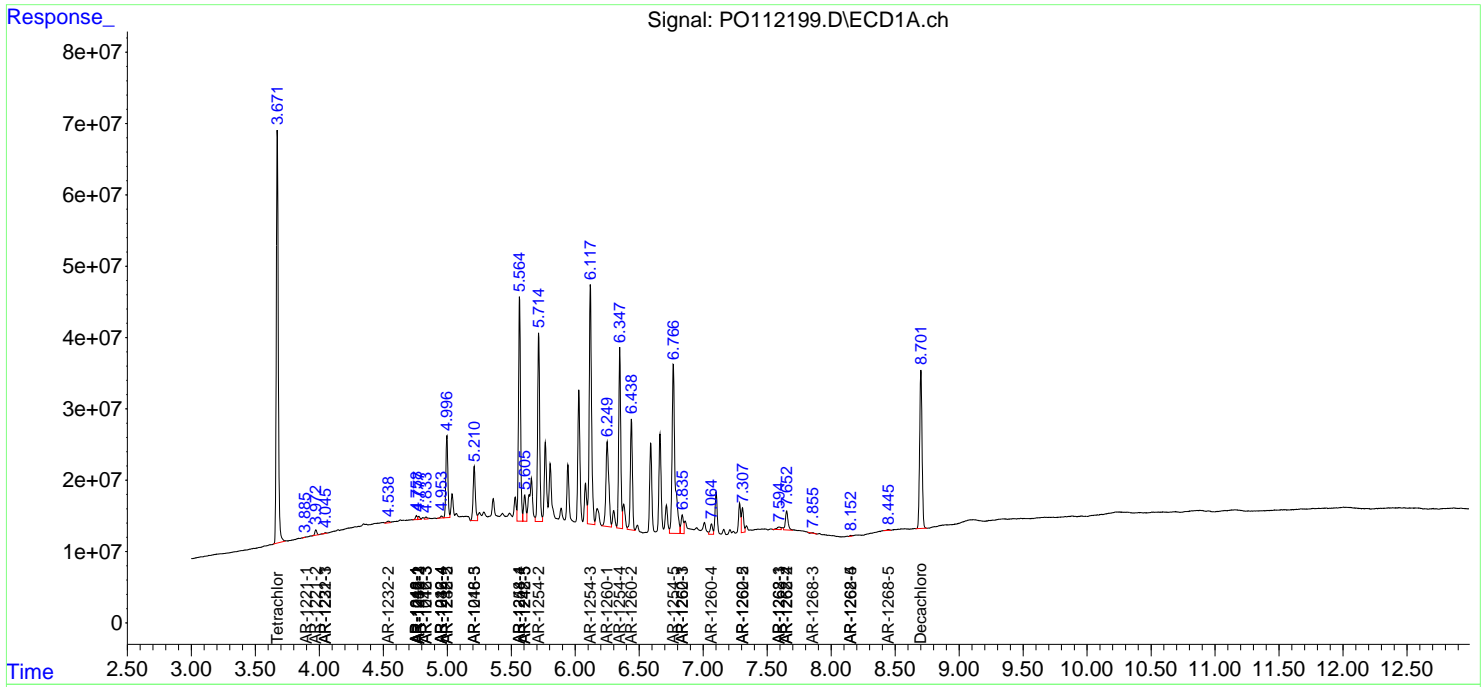
(f)=RT Delta > 1/2 Window (#)=Amounts differ by > 25% (m)=manual int.

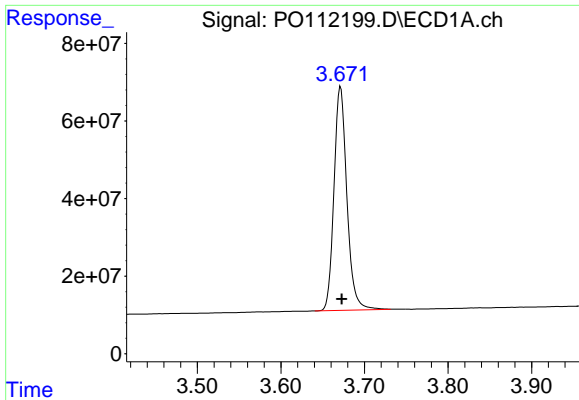
Data Path : Z:\pestpcbsrv\HPCHEM1\ECD_O\Data\PO071025\
 Data File : PO112199.D
 Signal(s) : Signal #1: ECD1A.ch Signal #2: ECD2B.ch
 Acq On : 10 Jul 2025 18:47
 Operator : YP/AJ
 Sample : AR1254CCC500
 Misc :
 ALS Vial : 6 Sample Multiplier: 1

Instrument :
 ECD_O
 ClientSampleId :
 AR1254CCC500

Integration File signal 1: autoint1.e
 Integration File signal 2: autoint2.e
 Quant Time: Jul 10 22:55:32 2025
 Quant Method : Z:\pestpcbsrv\HPCHEM1\ECD_O\methods\PO070825.M
 Quant Title : GC EXTRACTABLES
 QLast Update : Wed Jul 09 10:50:50 2025
 Response via : Initial Calibration
 Integrator: ChemStation

Volume Inj. : 2 µl
 Signal #1 Phase : ZB-MR1 Signal #2 Phase: ZB-MR2
 Signal #1 Info : 30Mx0.32mmx 0.50µ Signal #2 Info : 30M x 0.32mm x 0.25µm

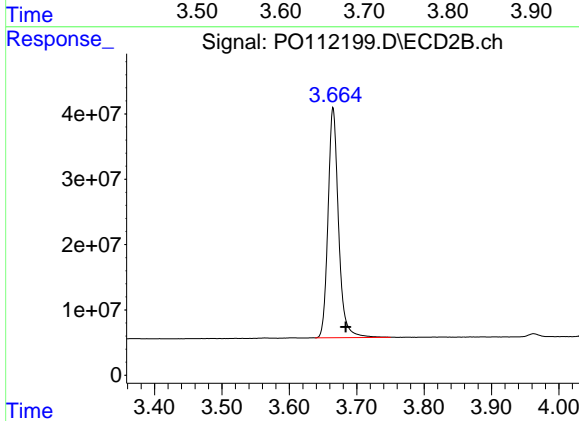




#1 Tetrachloro-m-xylene

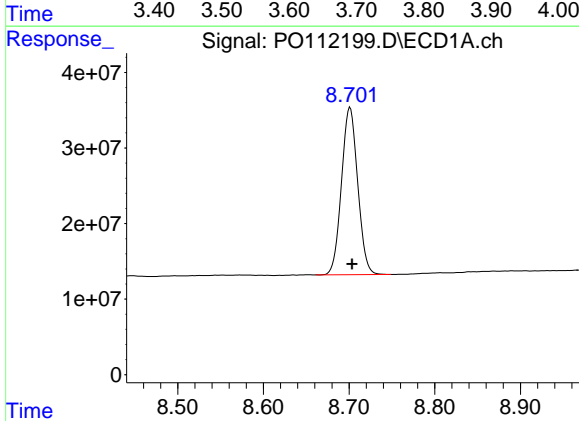
R.T.: 3.671 min
Delta R.T.: -0.002 min
Response: 619155865
Conc: 62.57 ng/ml

Instrument :
ECD_O
ClientSampleId :
AR1254CCC500



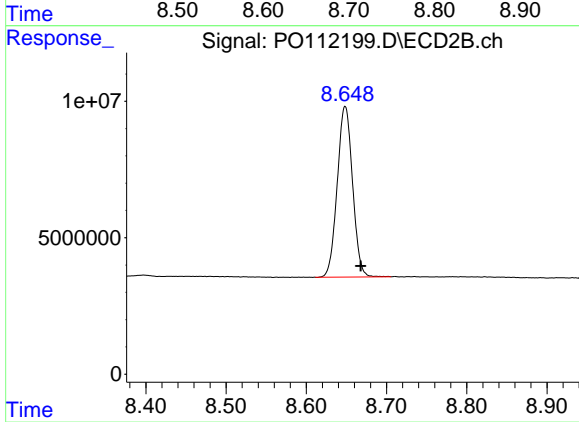
#1 Tetrachloro-m-xylene

R.T.: 3.665 min
Delta R.T.: -0.019 min
Response: 382192973
Conc: 59.99 ng/ml



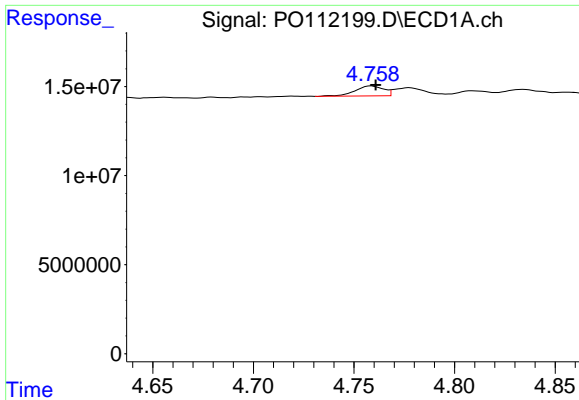
#2 Decachlorobiphenyl

R.T.: 8.701 min
Delta R.T.: -0.002 min
Response: 290935131
Conc: 42.55 ng/ml



#2 Decachlorobiphenyl

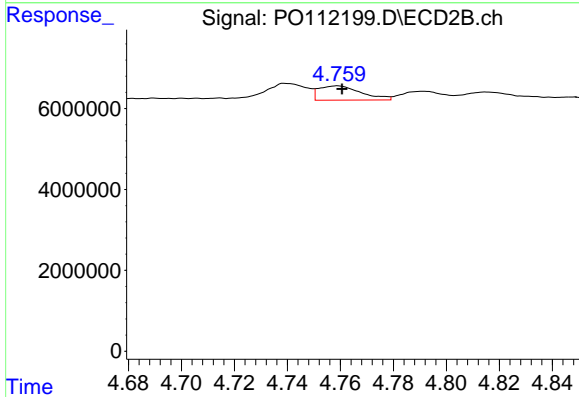
R.T.: 8.648 min
Delta R.T.: -0.019 min
Response: 83116419
Conc: 48.23 ng/ml



#3 AR-1016-1

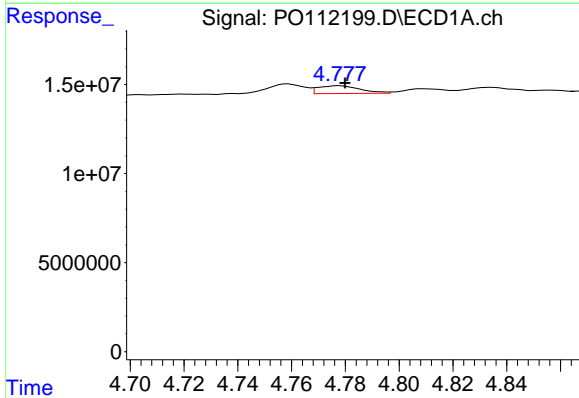
R.T.: 4.759 min
 Delta R.T.: -0.002 min
 Response: 5398750
 Conc: 15.87 ng/ml

Instrument :
 ECD_O
 ClientSampleId :
 AR1254CCC500



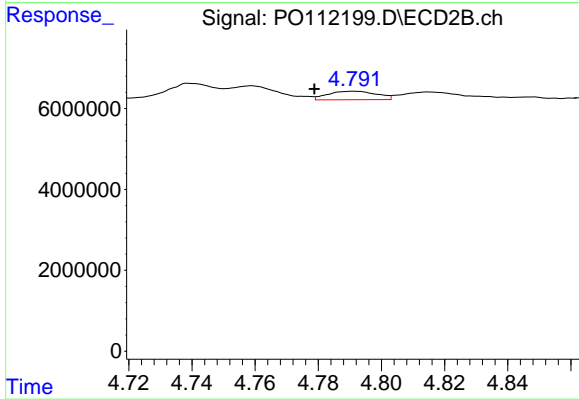
#3 AR-1016-1

R.T.: 4.759 min
 Delta R.T.: -0.002 min
 Response: 3907709
 Conc: 17.54 ng/ml



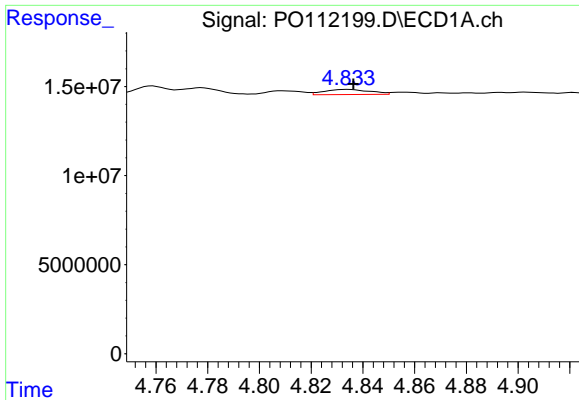
#4 AR-1016-2

R.T.: 4.778 min
 Delta R.T.: -0.002 min
 Response: 4679642
 Conc: 9.41 ng/ml



#4 AR-1016-2

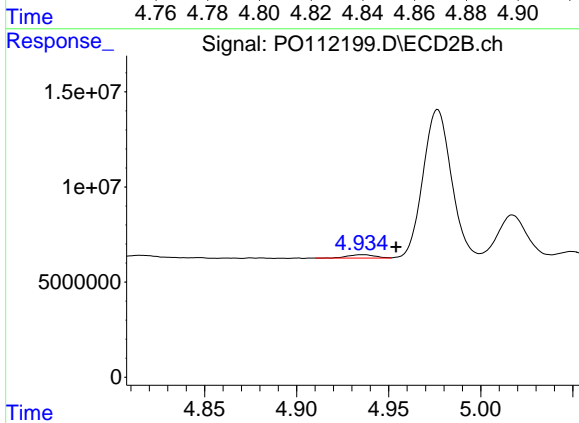
R.T.: 4.792 min
 Delta R.T.: 0.013 min
 Response: 2265638
 Conc: 6.88 ng/ml



#5 AR-1016-3

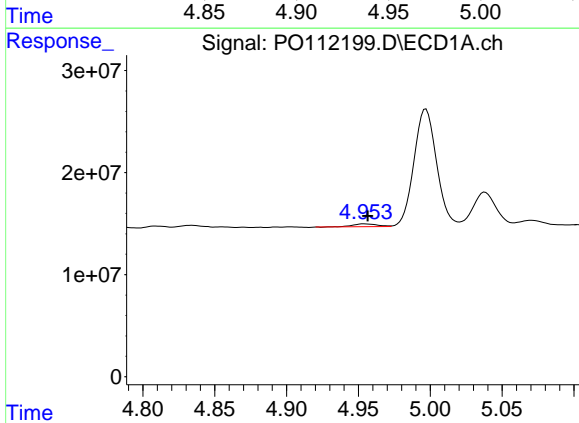
R.T.: 4.834 min
 Delta R.T.: -0.002 min
 Response: 3560085
 Conc: 11.00 ng/ml

Instrument :
 ECD_O
 ClientSampleId :
 AR1254CCC500



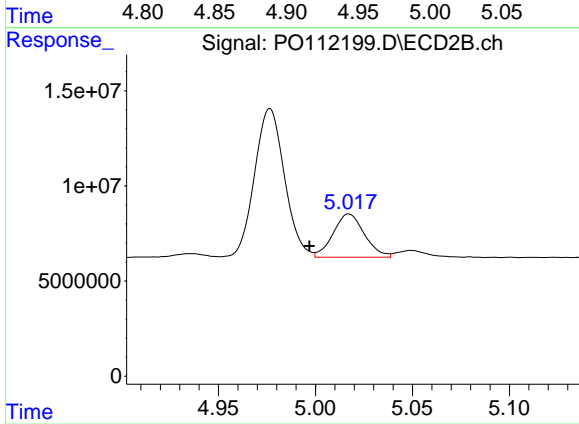
#5 AR-1016-3

R.T.: 4.937 min
 Delta R.T.: -0.017 min
 Response: 1864009
 Conc: 10.97 ng/ml



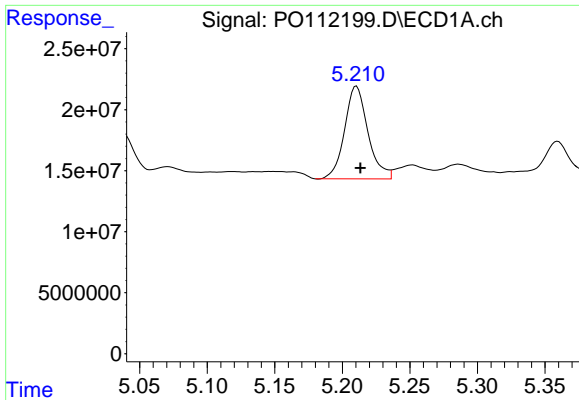
#6 AR-1016-4

R.T.: 4.954 min
 Delta R.T.: -0.002 min
 Response: 3266803
 Conc: 12.72 ng/ml



#6 AR-1016-4

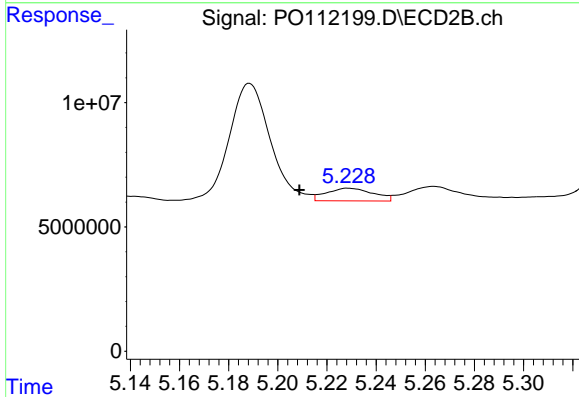
R.T.: 5.017 min
 Delta R.T.: 0.020 min
 Response: 25472688
 Conc: 185.62 ng/ml



#7 AR-1016-5

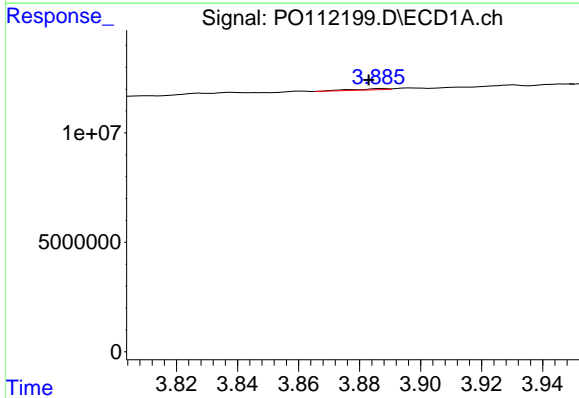
R.T.: 5.210 min
 Delta R.T.: -0.003 min
 Response: 91362985
 Conc: 333.85 ng/ml

Instrument :
 ECD_O
 ClientSampleId :
 AR1254CCC500



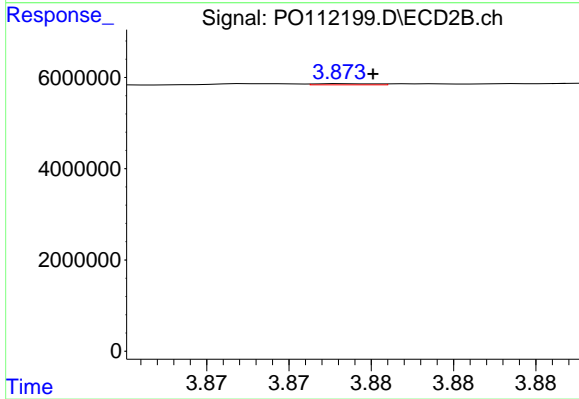
#7 AR-1016-5

R.T.: 5.229 min
 Delta R.T.: 0.020 min
 Response: 6793143
 Conc: 39.39 ng/ml



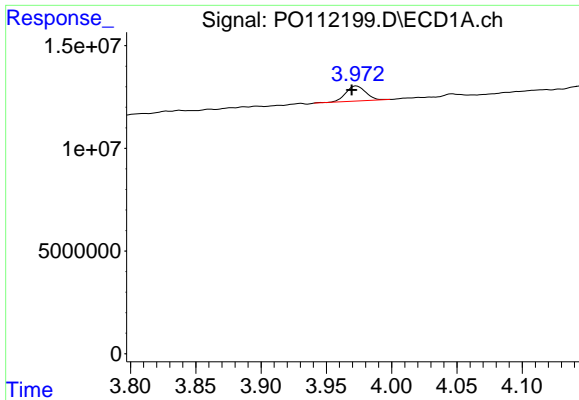
#8 AR-1221-1

R.T.: 3.887 min
 Delta R.T.: 0.004 min
 Response: 447910
 Conc: 3.84 ng/ml



#8 AR-1221-1

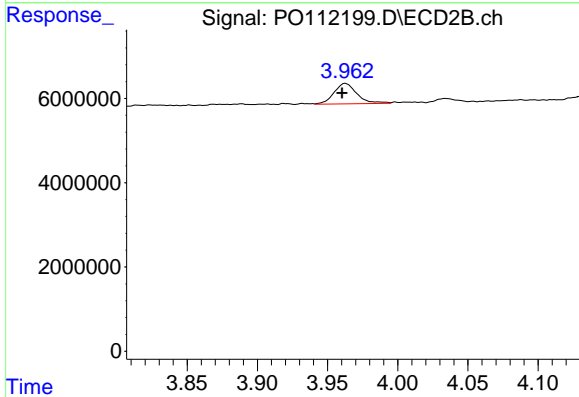
R.T.: 3.874 min
 Delta R.T.: -0.002 min
 Response: 65250
 Conc: 0.79 ng/ml



#9 AR-1221-2

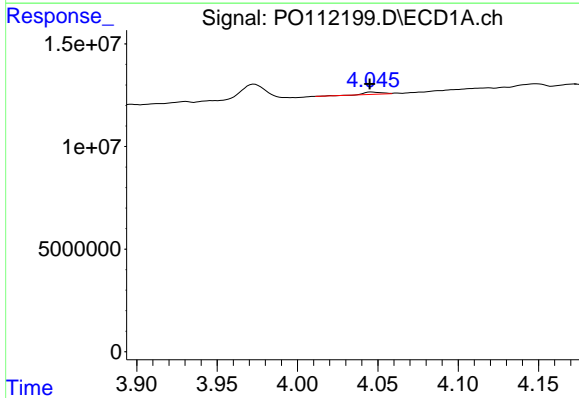
R.T.: 3.973 min
 Delta R.T.: 0.004 min
 Response: 7823907
 Conc: 99.24 ng/ml

Instrument :
 ECD_O
 ClientSampleId :
 AR1254CCC500



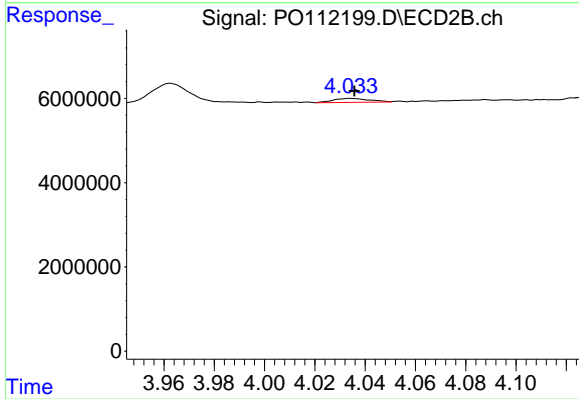
#9 AR-1221-2

R.T.: 3.963 min
 Delta R.T.: 0.002 min
 Response: 5502774
 Conc: 92.71 ng/ml



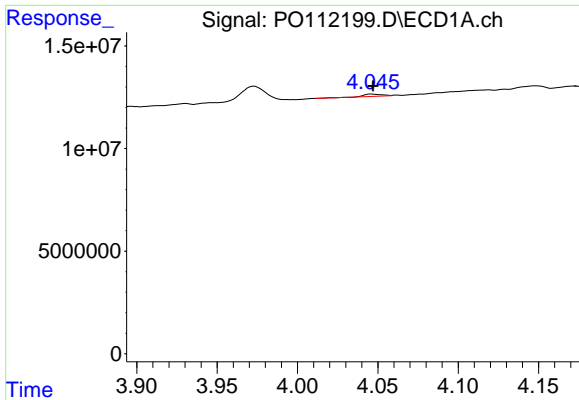
#10 AR-1221-3

R.T.: 4.046 min
 Delta R.T.: 0.001 min
 Response: 785461
 Conc: 2.91 ng/ml



#10 AR-1221-3

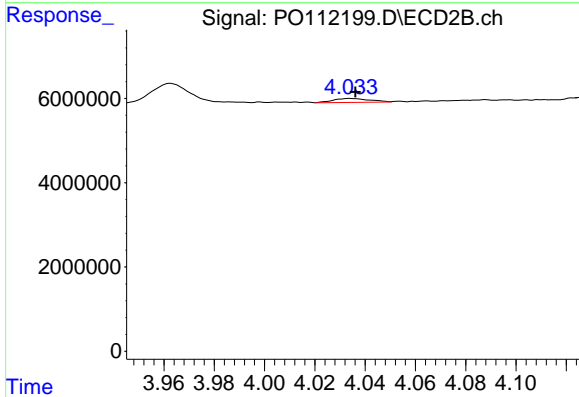
R.T.: 4.034 min
 Delta R.T.: -0.002 min
 Response: 928799
 Conc: 4.92 ng/ml



#11 AR-1232-1

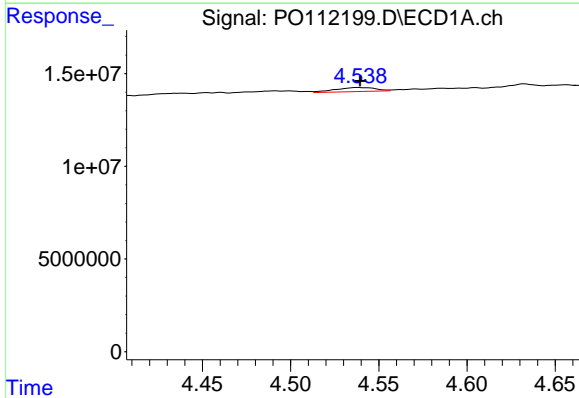
R.T.: 4.046 min
 Delta R.T.: 0.000 min
 Response: 785461
 Conc: 3.66 ng/ml

Instrument :
 ECD_O
 ClientSampleId :
 AR1254CCC500



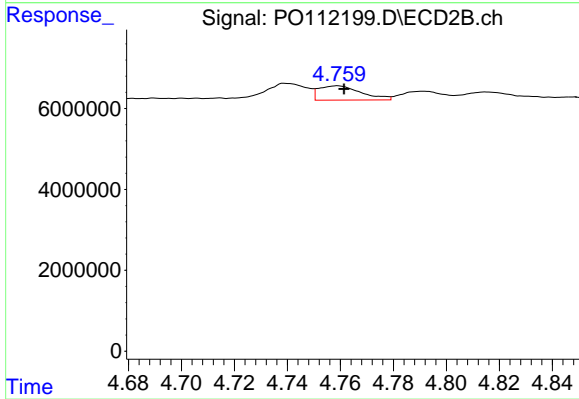
#11 AR-1232-1

R.T.: 4.034 min
 Delta R.T.: -0.002 min
 Response: 928799
 Conc: 6.19 ng/ml



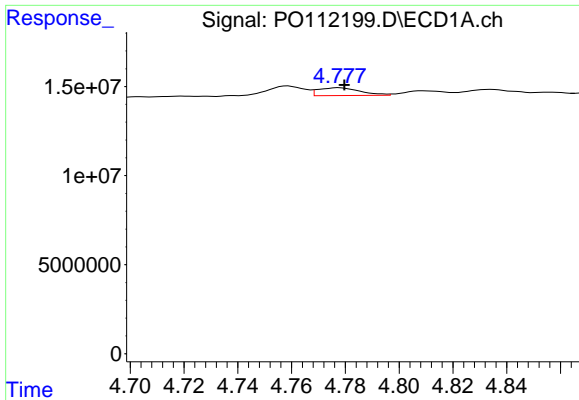
#12 AR-1232-2

R.T.: 4.538 min
 Delta R.T.: 0.000 min
 Response: 3532301
 Conc: 31.08 ng/ml



#12 AR-1232-2

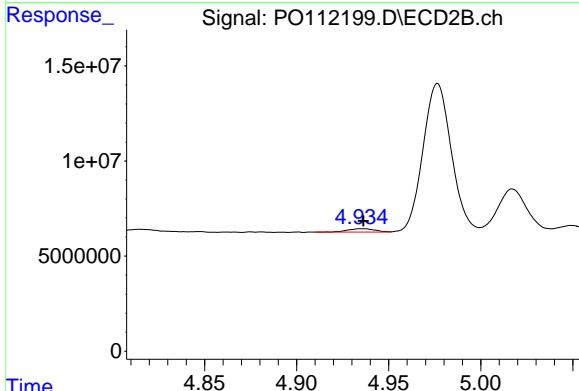
R.T.: 4.759 min
 Delta R.T.: -0.002 min
 Response: 3907709
 Conc: 25.53 ng/ml



#13 AR-1232-3

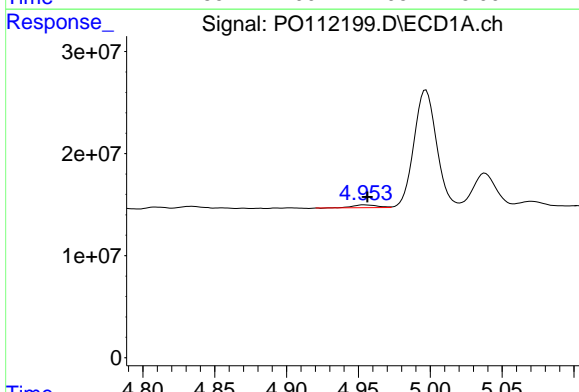
R.T.: 4.778 min
 Delta R.T.: -0.002 min
 Response: 4679642
 Conc: 20.43 ng/ml

Instrument :
 ECD_O
 ClientSampleId :
 AR1254CCC500



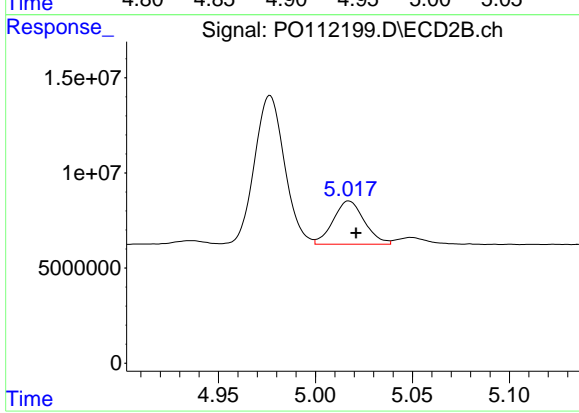
#13 AR-1232-3

R.T.: 4.937 min
 Delta R.T.: 0.000 min
 Response: 1864009
 Conc: 24.69 ng/ml



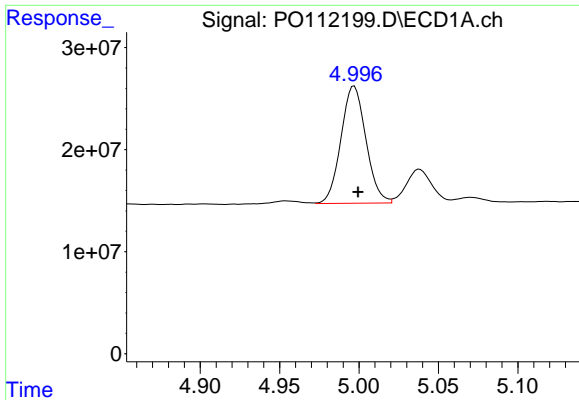
#14 AR-1232-4

R.T.: 4.954 min
 Delta R.T.: -0.002 min
 Response: 3266803
 Conc: 28.58 ng/ml



#14 AR-1232-4

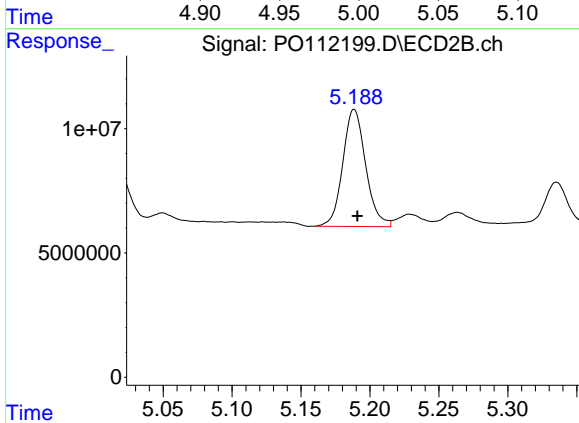
R.T.: 5.017 min
 Delta R.T.: -0.004 min
 Response: 25472688
 Conc: 386.02 ng/ml



#15 AR-1232-5

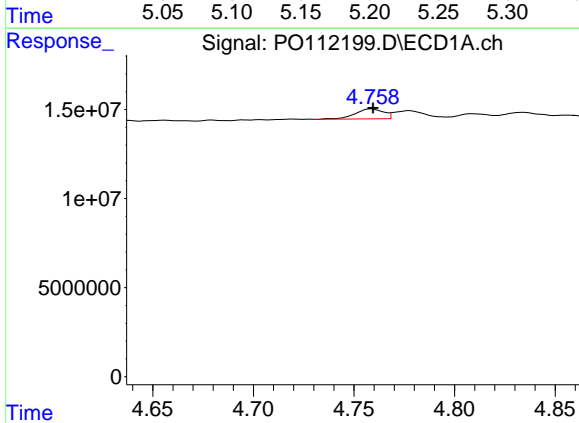
R.T.: 4.997 min
 Delta R.T.: -0.002 min
 Response: 125811426
 Conc: 1714.05 ng/ml

Instrument :
 ECD_O
 ClientSampleId :
 AR1254CCC500



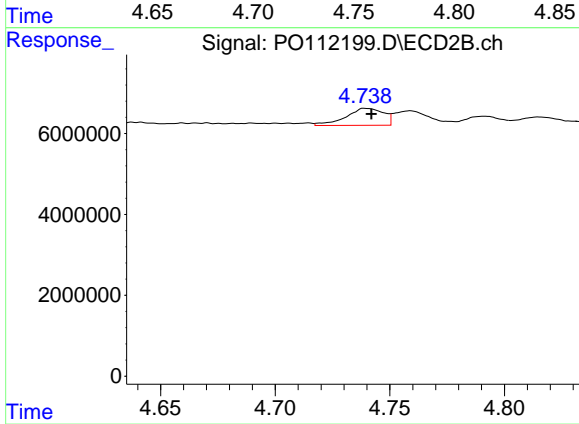
#15 AR-1232-5

R.T.: 5.189 min
 Delta R.T.: -0.002 min
 Response: 54549192
 Conc: 734.57 ng/ml



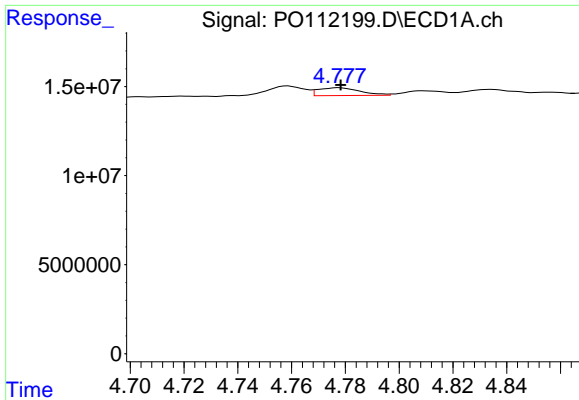
#16 AR-1242-1

R.T.: 4.759 min
 Delta R.T.: 0.000 min
 Response: 5398750
 Conc: 18.64 ng/ml



#16 AR-1242-1

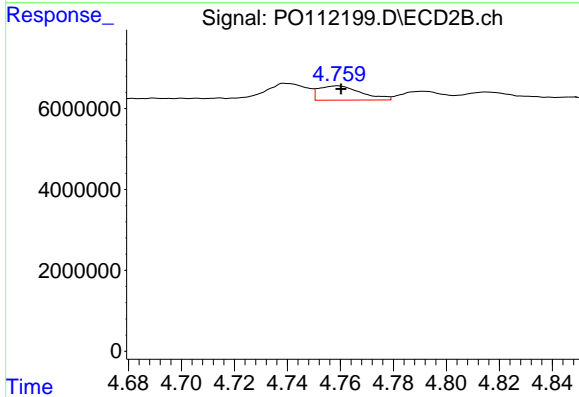
R.T.: 4.739 min
 Delta R.T.: -0.003 min
 Response: 4789729
 Conc: 24.71 ng/ml



#17 AR-1242-2

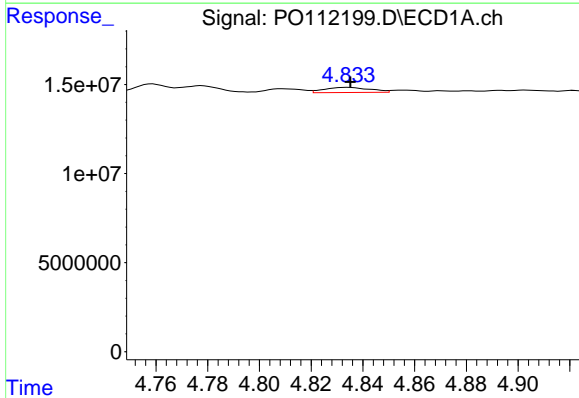
R.T.: 4.778 min
 Delta R.T.: 0.000 min
 Response: 4679642
 Conc: 10.99 ng/ml

Instrument :
 ECD_O
 ClientSampleId :
 AR1254CCC500



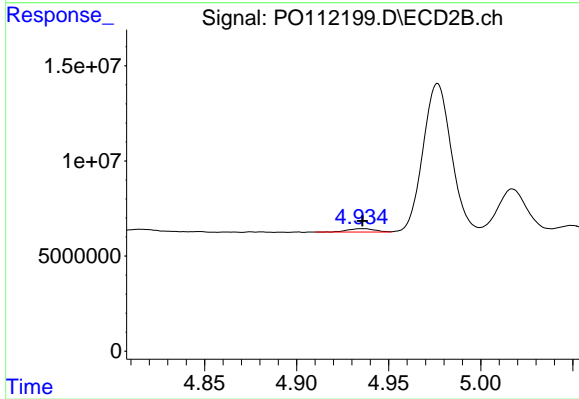
#17 AR-1242-2

R.T.: 4.759 min
 Delta R.T.: -0.001 min
 Response: 3907709
 Conc: 13.79 ng/ml



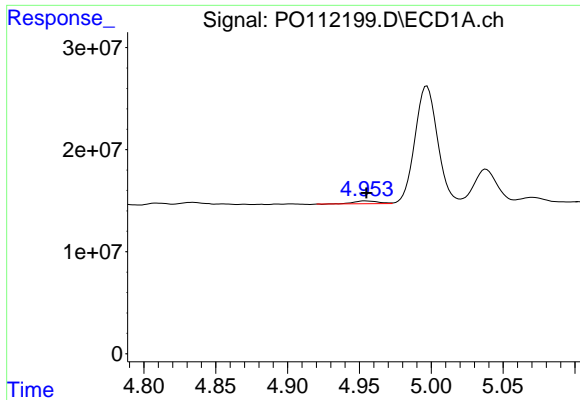
#18 AR-1242-3

R.T.: 4.834 min
 Delta R.T.: -0.001 min
 Response: 3560085
 Conc: 13.01 ng/ml



#18 AR-1242-3

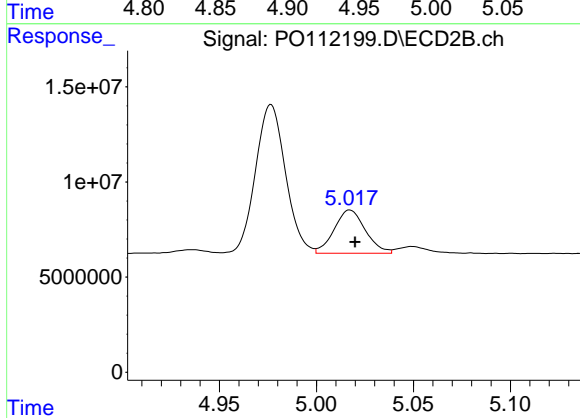
R.T.: 4.937 min
 Delta R.T.: 0.001 min
 Response: 1864009
 Conc: 12.80 ng/ml



#19 AR-1242-4

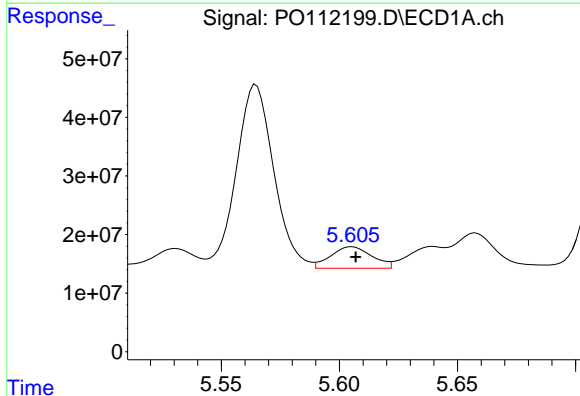
R.T.: 4.954 min
 Delta R.T.: 0.000 min
 Response: 3266803
 Conc: 14.50 ng/ml

Instrument :
 ECD_O
 ClientSampleId :
 AR1254CCC500



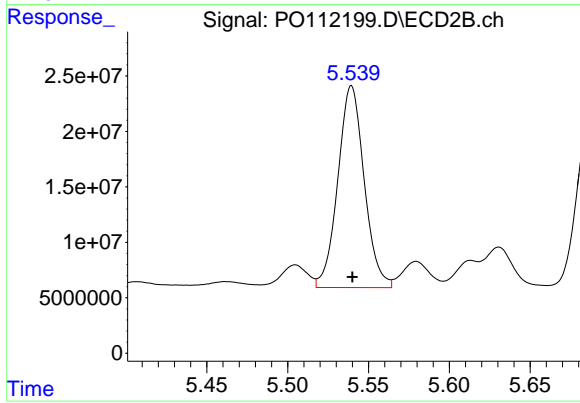
#19 AR-1242-4

R.T.: 5.017 min
 Delta R.T.: -0.003 min
 Response: 25472688
 Conc: 179.59 ng/ml



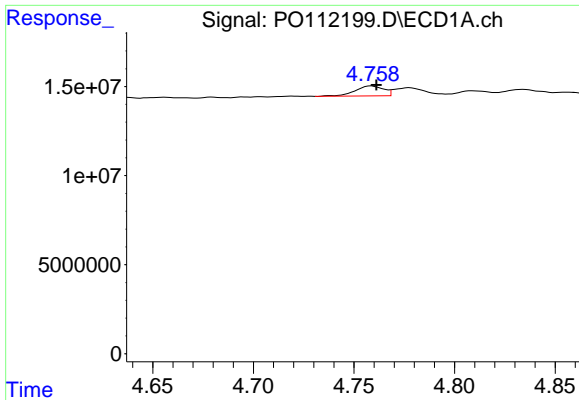
#20 AR-1242-5

R.T.: 5.605 min
 Delta R.T.: -0.001 min
 Response: 44659158
 Conc: 210.98 ng/ml



#20 AR-1242-5

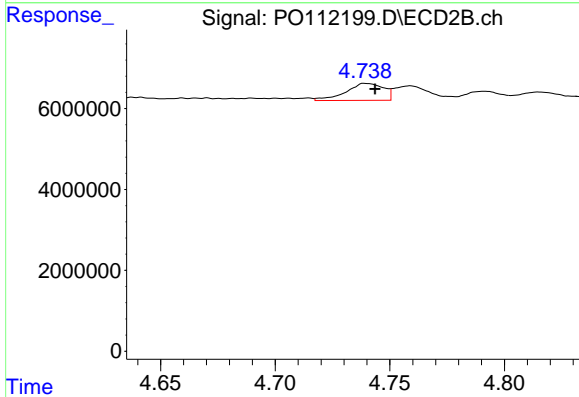
R.T.: 5.540 min
 Delta R.T.: 0.000 min
 Response: 206406920
 Conc: 1135.76 ng/ml



#21 AR-1248-1

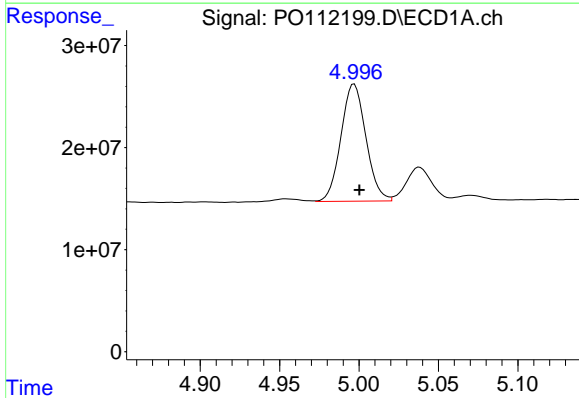
R.T.: 4.759 min
 Delta R.T.: -0.003 min
 Response: 5398750
 Conc: 23.79 ng/ml

Instrument :
 ECD_O
 ClientSampleId :
 AR1254CCC500



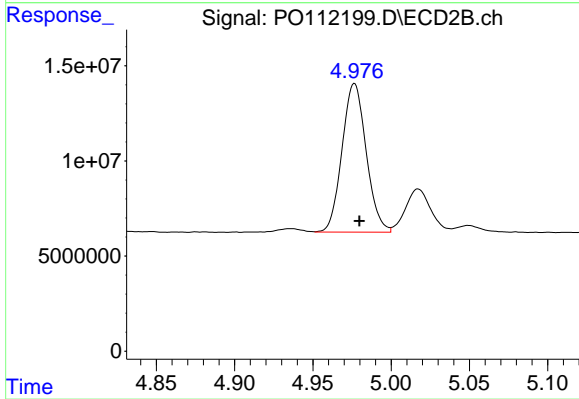
#21 AR-1248-1

R.T.: 4.739 min
 Delta R.T.: -0.005 min
 Response: 4789729
 Conc: 31.03 ng/ml



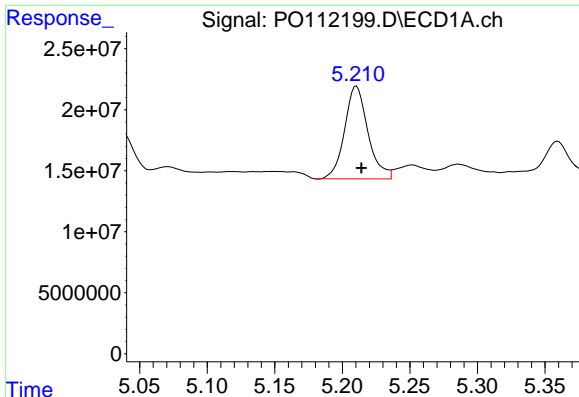
#22 AR-1248-2

R.T.: 4.997 min
 Delta R.T.: -0.003 min
 Response: 125811426
 Conc: 408.05 ng/ml



#22 AR-1248-2

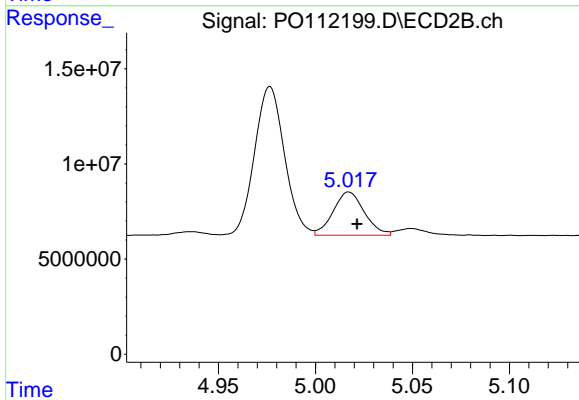
R.T.: 4.977 min
 Delta R.T.: -0.003 min
 Response: 83998433
 Conc: 408.22 ng/ml



#23 AR-1248-3

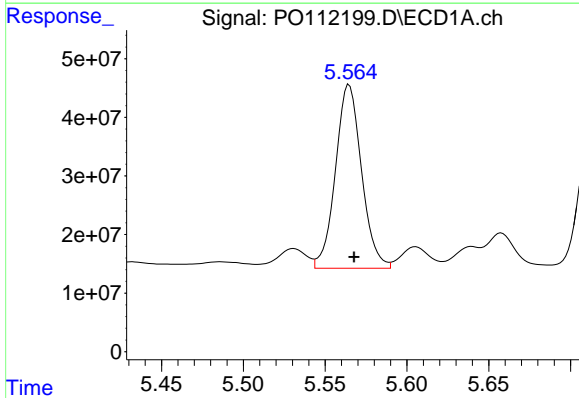
R.T.: 5.210 min
 Delta R.T.: -0.004 min
 Response: 91362985
 Conc: 224.30 ng/ml

Instrument :
 ECD_O
 ClientSampleId :
 AR1254CCC500



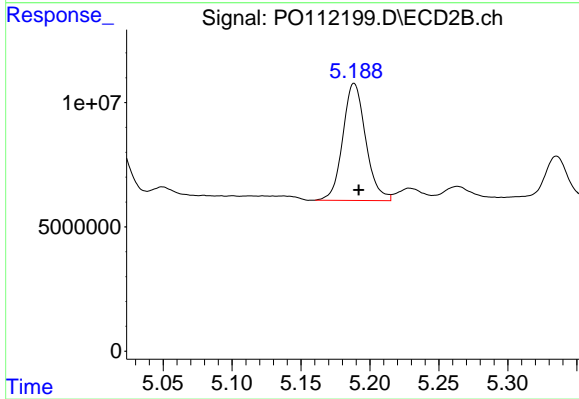
#23 AR-1248-3

R.T.: 5.017 min
 Delta R.T.: -0.004 min
 Response: 25472688
 Conc: 118.59 ng/ml



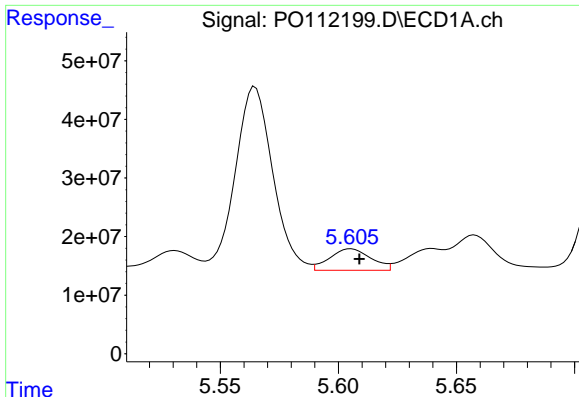
#24 AR-1248-4

R.T.: 5.565 min
 Delta R.T.: -0.003 min
 Response: 346540074
 Conc: 600.44 ng/ml



#24 AR-1248-4

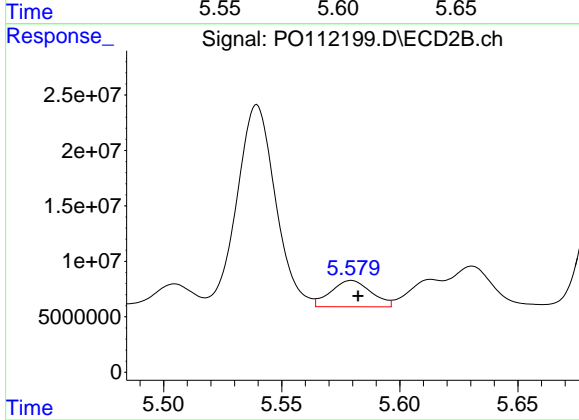
R.T.: 5.189 min
 Delta R.T.: -0.003 min
 Response: 54549192
 Conc: 210.84 ng/ml



#25 AR-1248-5

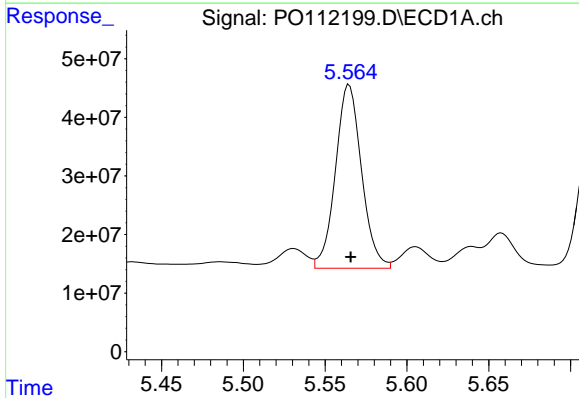
R.T.: 5.605 min
Delta R.T.: -0.003 min
Response: 44659158
Conc: 114.42 ng/ml

Instrument :
ECD_O
ClientSampleId :
AR1254CCC500



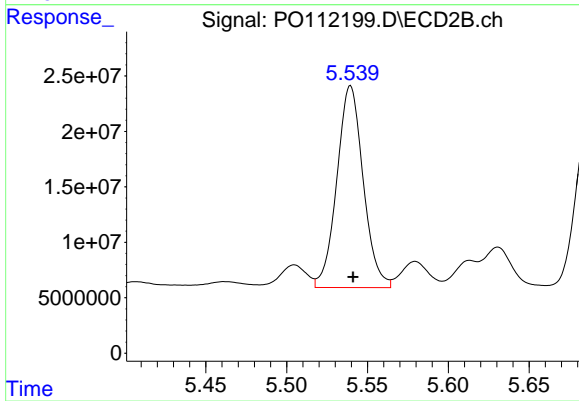
#25 AR-1248-5

R.T.: 5.580 min
Delta R.T.: -0.003 min
Response: 28289154
Conc: 112.91 ng/ml



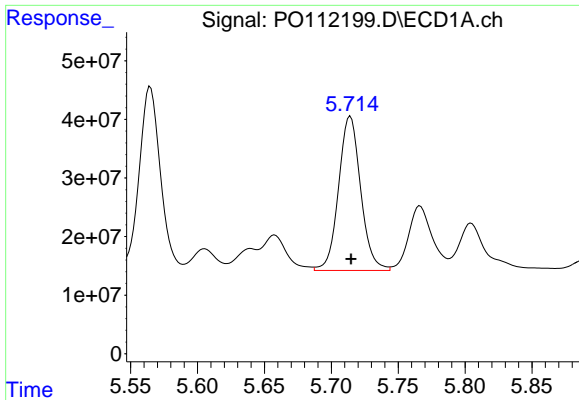
#26 AR-1254-1

R.T.: 5.565 min
Delta R.T.: 0.000 min
Response: 346540074
Conc: 563.38 ng/ml



#26 AR-1254-1

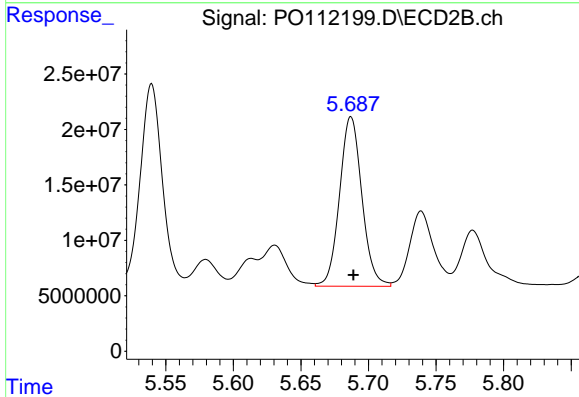
R.T.: 5.540 min
Delta R.T.: -0.002 min
Response: 206406920
Conc: 541.51 ng/ml



#27 AR-1254-2

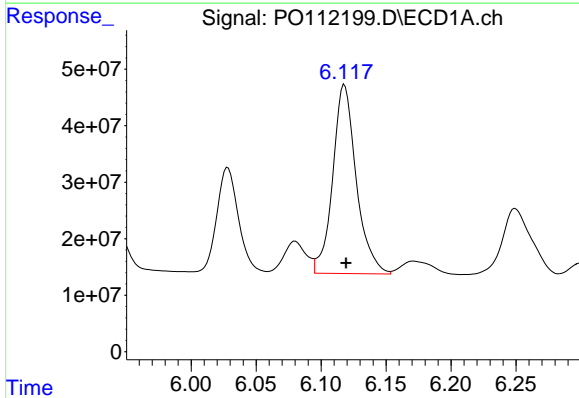
R.T.: 5.714 min
 Delta R.T.: 0.000 min
 Response: 303246760
 Conc: 566.09 ng/ml

Instrument :
 ECD_O
 ClientSampleId :
 AR1254CCC500



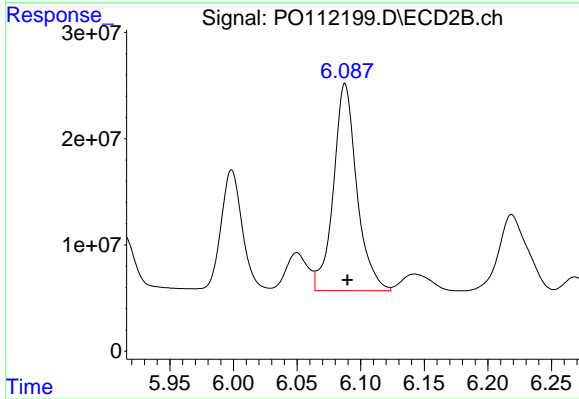
#27 AR-1254-2

R.T.: 5.687 min
 Delta R.T.: -0.002 min
 Response: 175953097
 Conc: 530.28 ng/ml



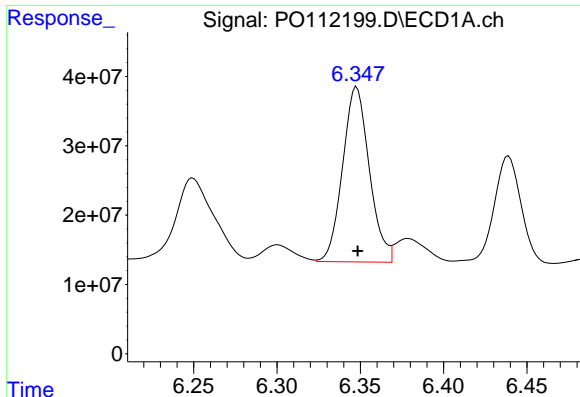
#28 AR-1254-3

R.T.: 6.118 min
 Delta R.T.: -0.001 min
 Response: 421416166
 Conc: 501.94 ng/ml



#28 AR-1254-3

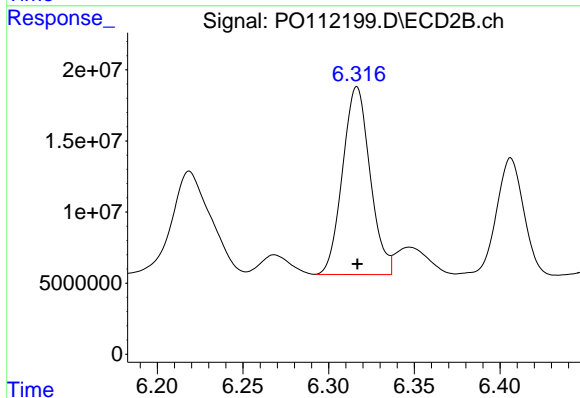
R.T.: 6.088 min
 Delta R.T.: -0.002 min
 Response: 249612662
 Conc: 517.82 ng/ml



#29 AR-1254-4

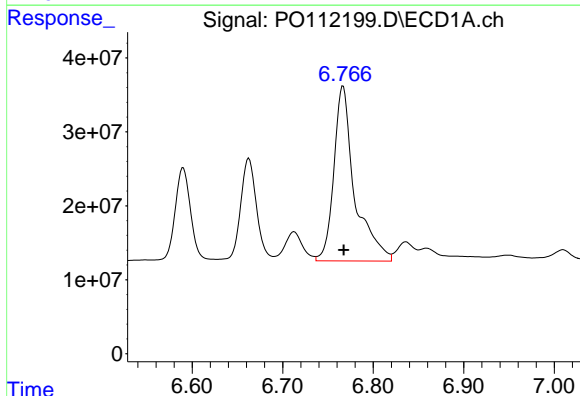
R.T.: 6.348 min
 Delta R.T.: 0.000 min
 Response: 281664782
 Conc: 585.56 ng/ml

Instrument :
 ECD_O
 ClientSampleId :
 AR1254CCC500



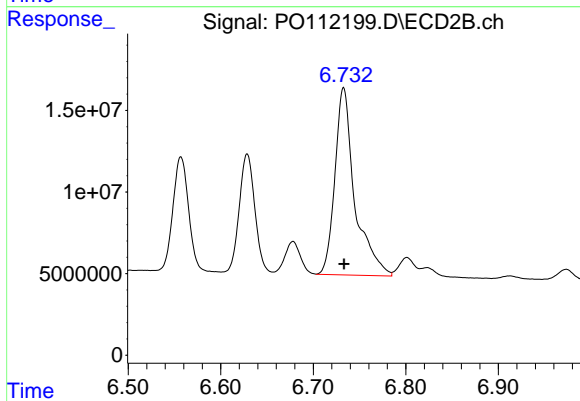
#29 AR-1254-4

R.T.: 6.316 min
 Delta R.T.: 0.000 min
 Response: 147579749
 Conc: 566.10 ng/ml



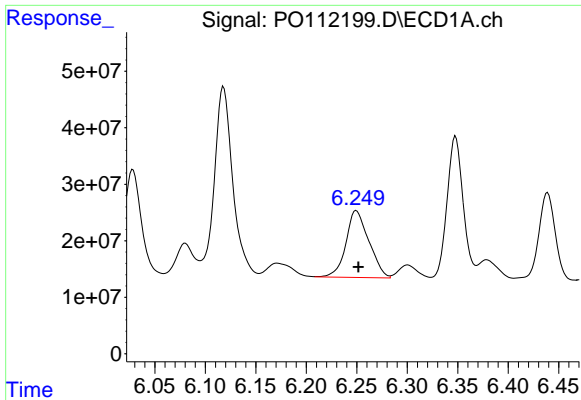
#30 AR-1254-5

R.T.: 6.767 min
 Delta R.T.: 0.000 min
 Response: 377823352
 Conc: 488.18 ng/ml



#30 AR-1254-5

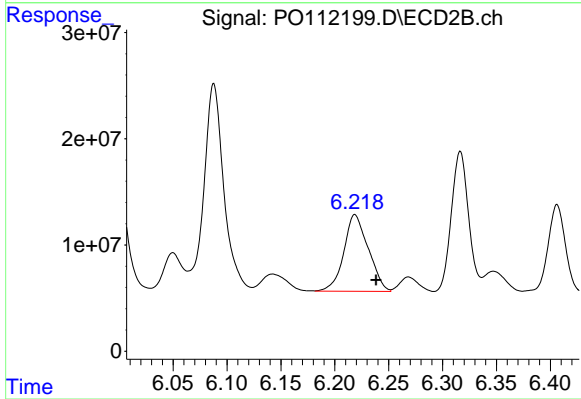
R.T.: 6.733 min
 Delta R.T.: 0.000 min
 Response: 171151018
 Conc: 480.28 ng/ml



#31 AR-1260-1

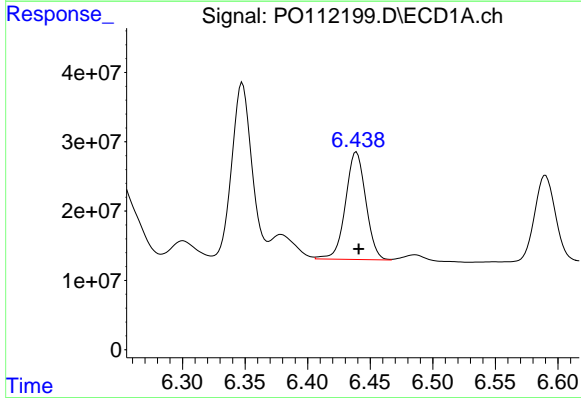
R.T.: 6.249 min
 Delta R.T.: -0.002 min
 Response: 186814782
 Conc: 372.71 ng/ml

Instrument :
 ECD_O
 ClientSampleId :
 AR1254CCC500



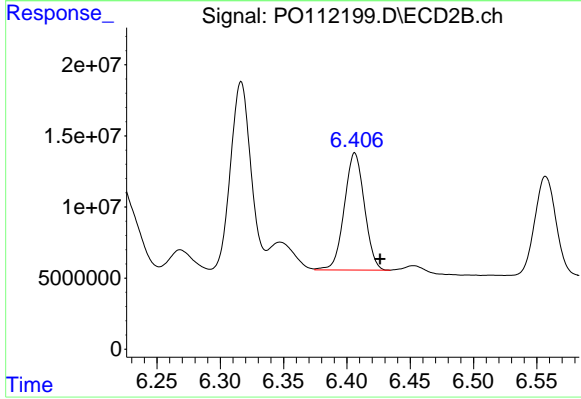
#31 AR-1260-1

R.T.: 6.219 min
 Delta R.T.: -0.020 min
 Response: 113856633
 Conc: 405.82 ng/ml



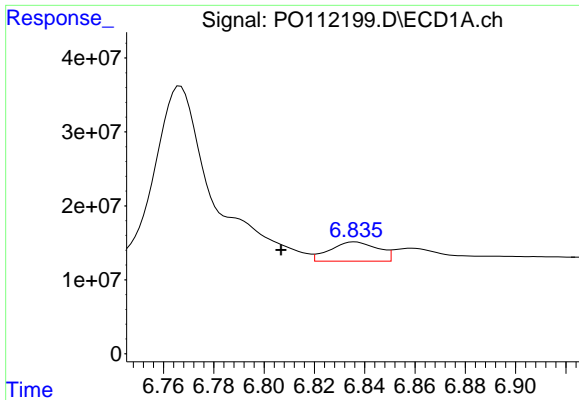
#32 AR-1260-2

R.T.: 6.439 min
 Delta R.T.: -0.002 min
 Response: 175465435
 Conc: 237.71 ng/ml



#32 AR-1260-2

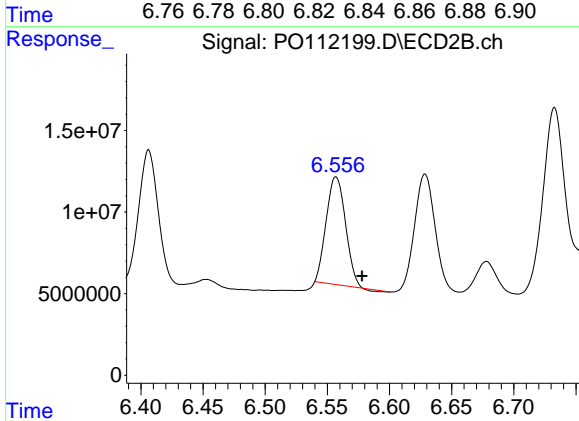
R.T.: 6.406 min
 Delta R.T.: -0.020 min
 Response: 90833795
 Conc: 267.16 ng/ml



#33 AR-1260-3

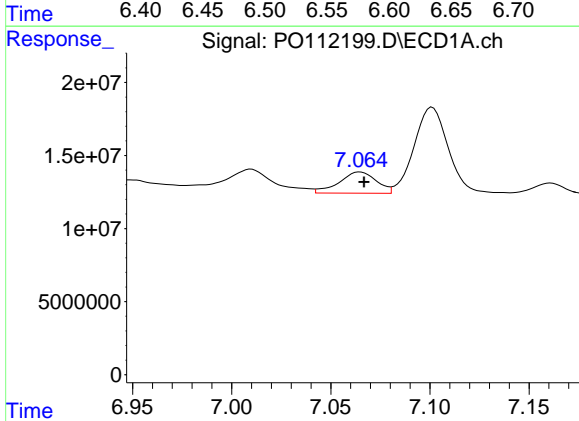
R.T.: 6.836 min
 Delta R.T.: 0.029 min
 Response: 34419613
 Conc: 52.51 ng/ml

Instrument :
 ECD_O
 ClientSampleId :
 AR1254CCC500



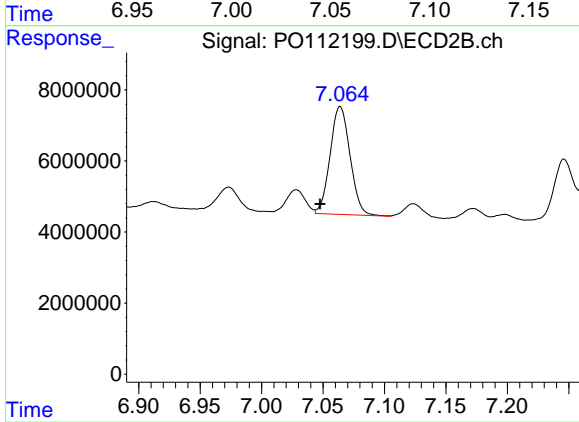
#33 AR-1260-3

R.T.: 6.557 min
 Delta R.T.: -0.021 min
 Response: 70961521
 Conc: 257.49 ng/ml



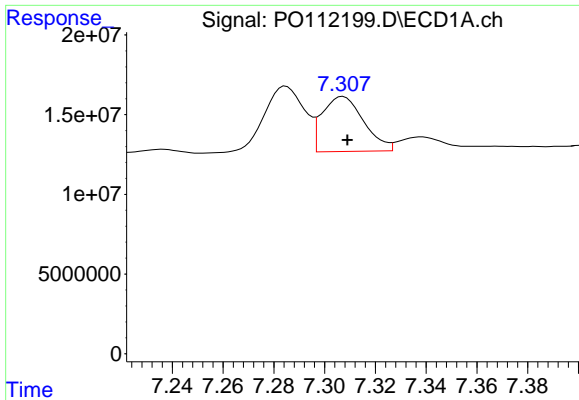
#34 AR-1260-4

R.T.: 7.065 min
 Delta R.T.: -0.002 min
 Response: 19078991
 Conc: 43.83 ng/ml



#34 AR-1260-4

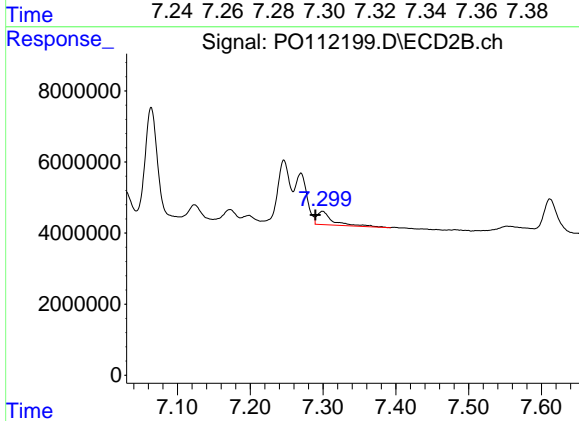
R.T.: 7.064 min
 Delta R.T.: 0.016 min
 Response: 34362292
 Conc: 171.26 ng/ml



#35 AR-1260-5

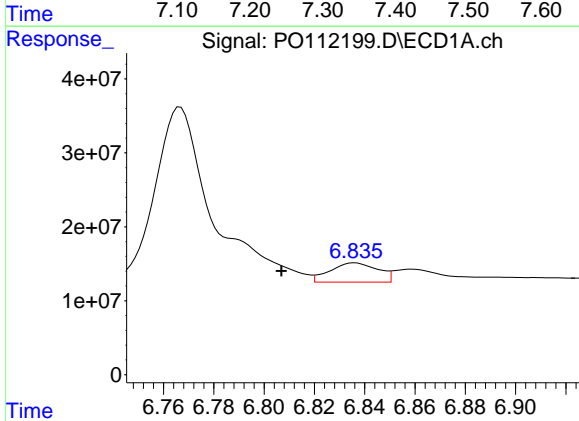
R.T.: 7.307 min
 Delta R.T.: -0.002 min
 Response: 39113438
 Conc: 30.98 ng/ml

Instrument :
 ECD_O
 ClientSampleId :
 AR1254CCC500



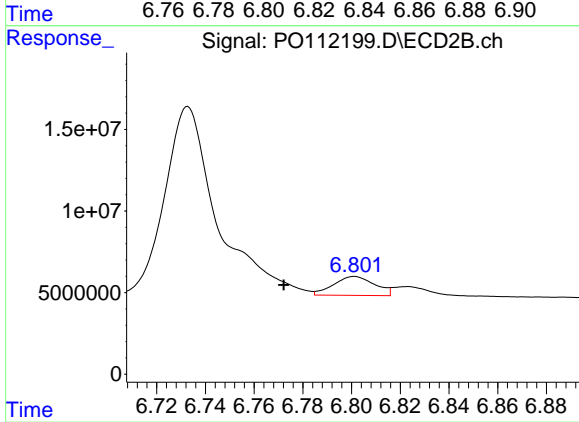
#35 AR-1260-5

R.T.: 7.299 min
 Delta R.T.: 0.010 min
 Response: 5677324
 Conc: 12.68 ng/ml



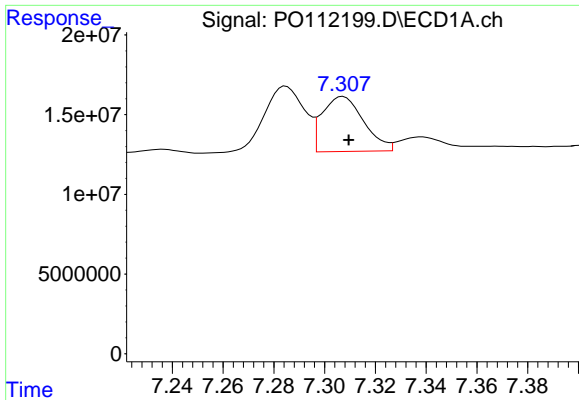
#36 AR-1262-1

R.T.: 6.836 min
 Delta R.T.: 0.029 min
 Response: 34419613
 Conc: 33.69 ng/ml



#36 AR-1262-1

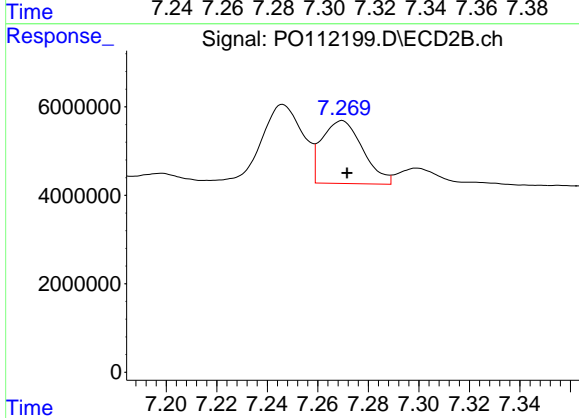
R.T.: 6.801 min
 Delta R.T.: 0.029 min
 Response: 13610375
 Conc: 33.41 ng/ml



#37 AR-1262-2

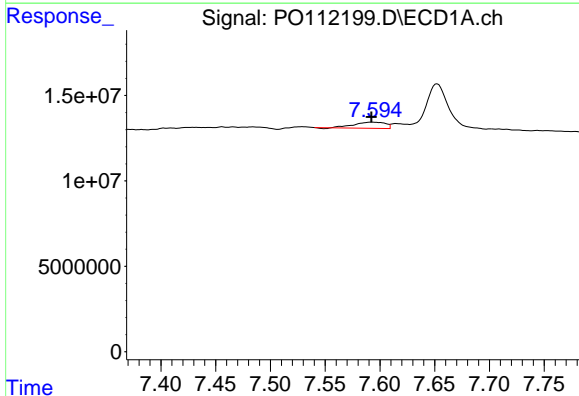
R.T.: 7.307 min
 Delta R.T.: -0.002 min
 Response: 39113438
 Conc: 23.86 ng/ml

Instrument :
 ECD_O
 ClientSampleId :
 AR1254CCC500



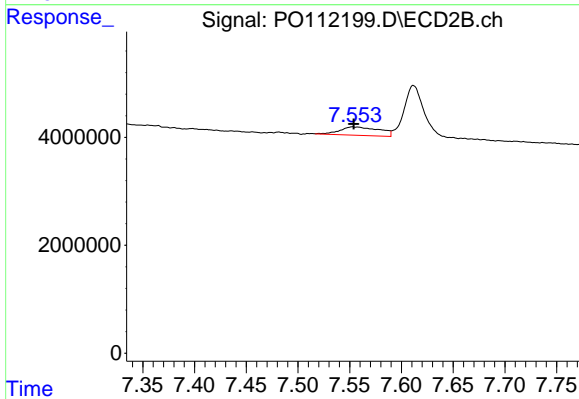
#37 AR-1262-2

R.T.: 7.270 min
 Delta R.T.: -0.002 min
 Response: 15972263
 Conc: 31.16 ng/ml



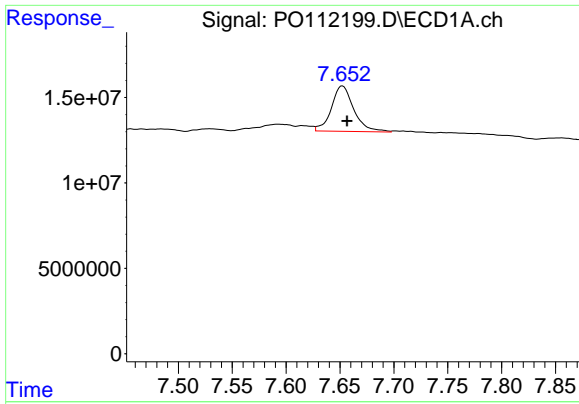
#38 AR-1262-3

R.T.: 7.593 min
 Delta R.T.: 0.000 min
 Response: 7002578
 Conc: 10.91 ng/ml



#38 AR-1262-3

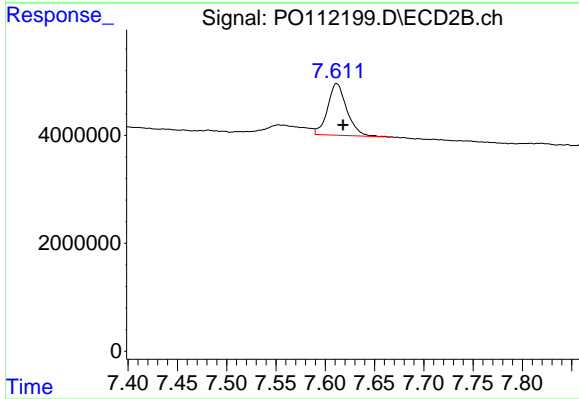
R.T.: 7.554 min
 Delta R.T.: 0.000 min
 Response: 4153518
 Conc: 23.14 ng/ml



#39 AR-1262-4

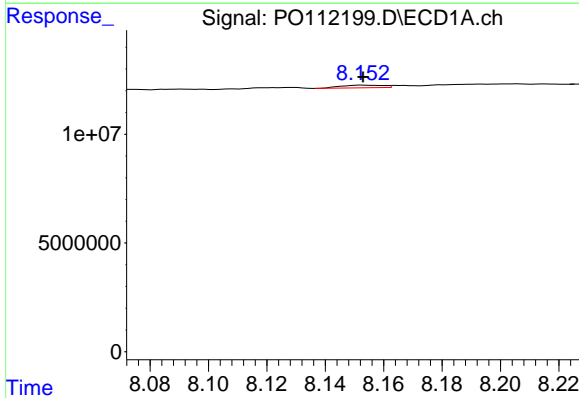
R.T.: 7.652 min
 Delta R.T.: -0.004 min
 Response: 38413664
 Conc: 35.85 ng/ml

Instrument :
 ECD_O
 ClientSampleId :
 AR1254CCC500



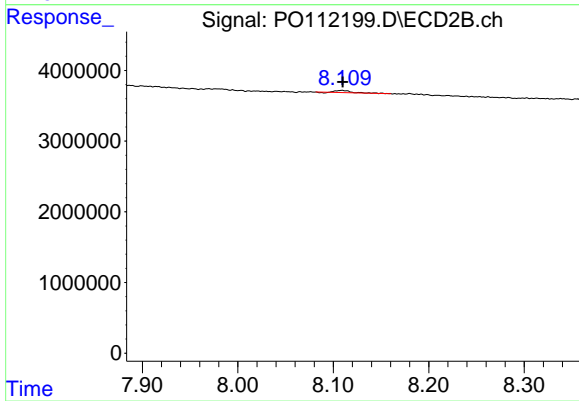
#39 AR-1262-4

R.T.: 7.612 min
 Delta R.T.: -0.006 min
 Response: 12869890
 Conc: 44.24 ng/ml



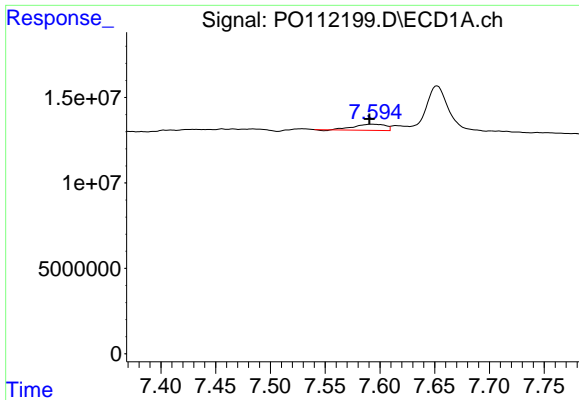
#40 AR-1262-5

R.T.: 8.153 min
 Delta R.T.: 0.000 min
 Response: 1254778
 Conc: 2.80 ng/ml



#40 AR-1262-5

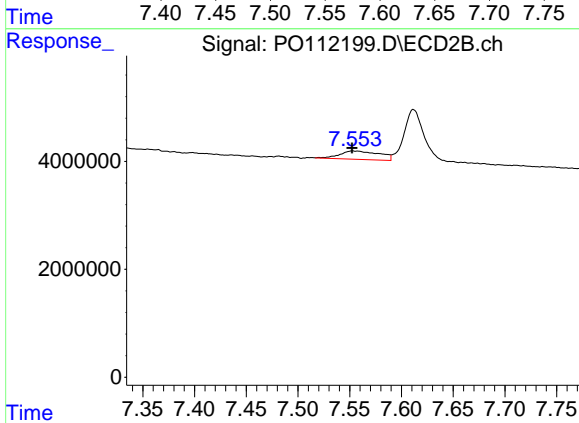
R.T.: 8.109 min
 Delta R.T.: 0.000 min
 Response: 342210
 Conc: 3.24 ng/ml



#41 AR-1268-1

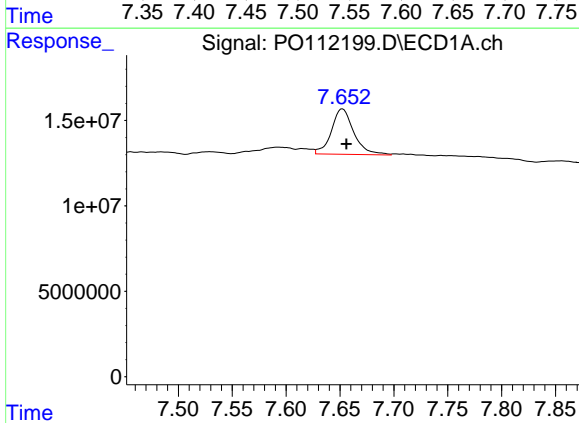
R.T.: 7.593 min
 Delta R.T.: 0.003 min
 Response: 7002578
 Conc: 3.81 ng/ml

Instrument :
 ECD_O
 ClientSampleId :
 AR1254CCC500



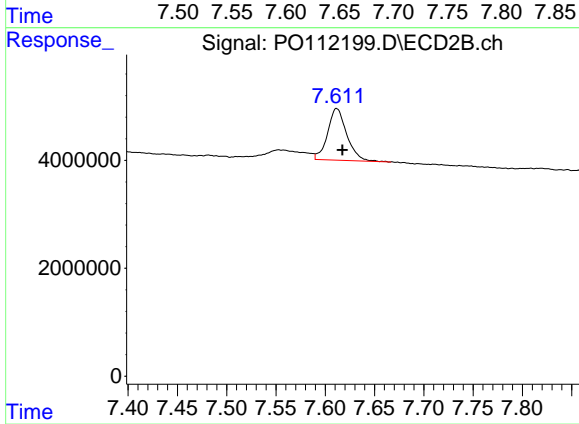
#41 AR-1268-1

R.T.: 7.554 min
 Delta R.T.: 0.002 min
 Response: 4153518
 Conc: 8.45 ng/ml



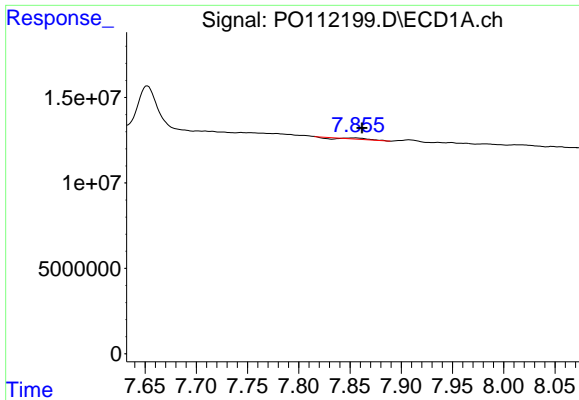
#42 AR-1268-2

R.T.: 7.652 min
 Delta R.T.: -0.004 min
 Response: 38413664
 Conc: 24.66 ng/ml



#42 AR-1268-2

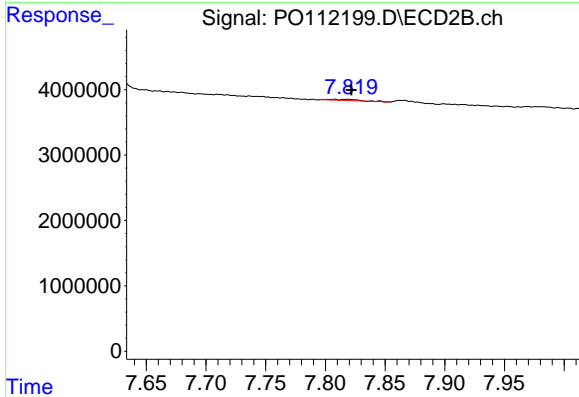
R.T.: 7.612 min
 Delta R.T.: -0.006 min
 Response: 12869890
 Conc: 30.85 ng/ml



#43 AR-1268-3

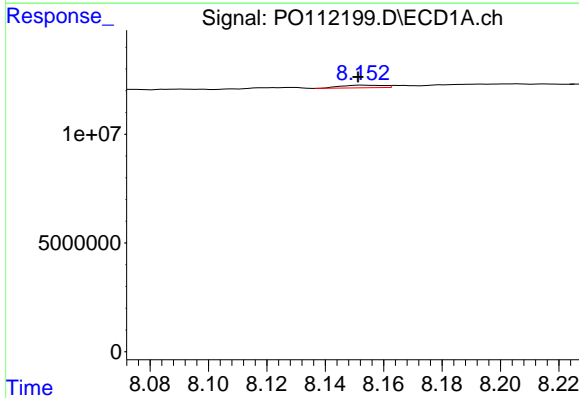
R.T.: 7.855 min
 Delta R.T.: -0.006 min
 Response: 468255
 Conc: 0.36 ng/ml

Instrument :
 ECD_O
 ClientSampleId :
 AR1254CCC500



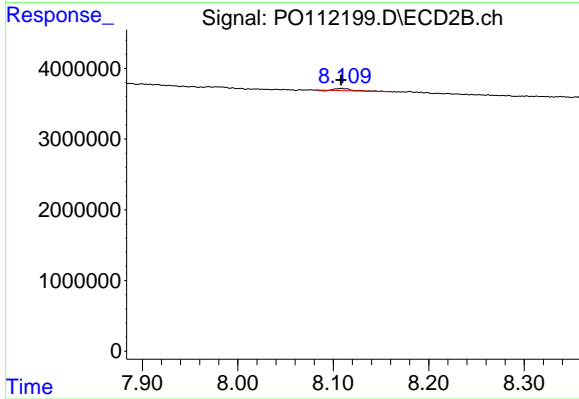
#43 AR-1268-3

R.T.: 7.818 min
 Delta R.T.: -0.004 min
 Response: 268564
 Conc: 0.85 ng/ml



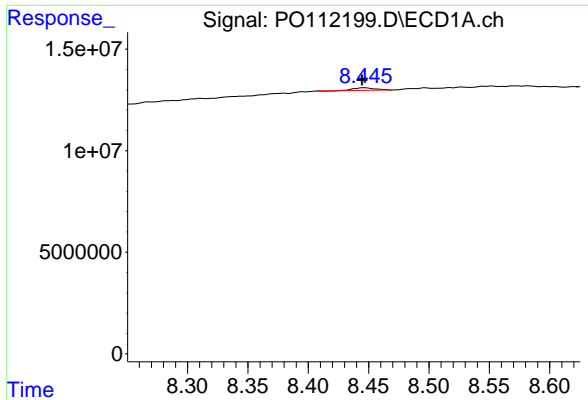
#44 AR-1268-4

R.T.: 8.153 min
 Delta R.T.: 0.002 min
 Response: 1254778
 Conc: 2.61 ng/ml



#44 AR-1268-4

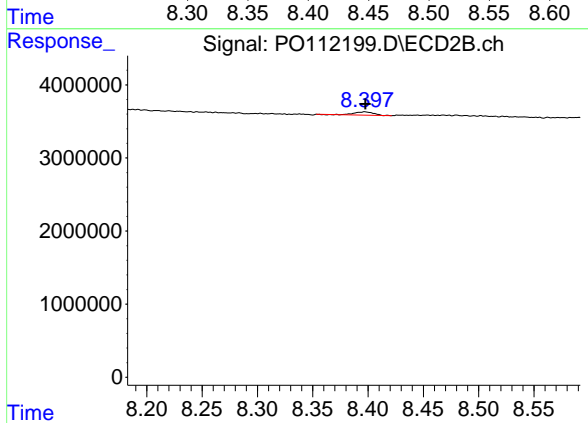
R.T.: 8.109 min
 Delta R.T.: 0.000 min
 Response: 342210
 Conc: 3.07 ng/ml



#45 AR-1268-5

R.T.: 8.446 min
 Delta R.T.: 0.002 min
 Response: 1648928
 Conc: 0.51 ng/ml

Instrument :
 ECD_O
 ClientSampleId :
 AR1254CCC500



#45 AR-1268-5

R.T.: 8.397 min
 Delta R.T.: 0.000 min
 Response: 533808
 Conc: 0.73 ng/ml