

Data Path : Z:\pestpcbsrv\HPCHEM1\ECD_0\Data\P0071025\
 Data File : PO112200.D
 Signal(s) : Signal #1: ECD1A.ch Signal #2: ECD2B.ch
 Acq On : 10 Jul 2025 19:05
 Operator : YP/AJ
 Sample : I.BLK
 Misc :
 ALS Vial : 2 Sample Multiplier: 1

Instrument :
 ECD_0
 ClientSampleId :
 I.BLK

Integration File signal 1: autoint1.e
 Integration File signal 2: autoint2.e
 Quant Time: Jul 10 22:56:10 2025
 Quant Method : Z:\pestpcbsrv\HPCHEM1\ECD_0\methods\P0070825.M
 Quant Title : GC EXTRACTABLES
 QLast Update : Wed Jul 09 10:50:50 2025
 Response via : Initial Calibration
 Integrator: ChemStation

Volume Inj. : 2 µl
 Signal #1 Phase : ZB-MR2 Signal #2 Phase: ZB-MR2
 Signal #1 Info : 30Mx0.32mmx 0.50µ Signal #2 Info : 30M x 0.32mm x 0.25µm

Compound	RT#1	RT#2	Resp#1	Resp#2	ng/ml	ng/ml

System Monitoring Compounds						
1) SA Tetrachlo...	3.673	3.666	177.4E6	110.3E6	17.933	17.317
2) SA Decachlor...	8.702	8.649	106.9E6	31253279	15.640	18.134
Target Compounds						
3) L1 AR-1016-1	4.751	4.762	182822	385647	0.538	1.731 #
4) L1 AR-1016-2	4.775	4.778	1021525	201586	2.054	0.613 #
5) L1 AR-1016-3	4.843	4.955	481036	347583	1.486	2.046 #
6) L1 AR-1016-4	4.948	4.994	1226689	655181	4.777	4.774
7) L1 AR-1016-5	5.217	5.209	10129917	818098	37.016	4.744 #
8) L2 AR-1221-1	3.893	3.875	405703	118607	3.479	1.441 #
9) L2 AR-1221-2	3.975	3.964	2226361	2315651	28.239	39.015 #
10) L2 AR-1221-3	4.025	4.038	649090	207575	2.408	1.100 #
11) L3 AR-1232-1	4.025	4.038	649090	207575	3.024	1.383 #
12) L3 AR-1232-2	4.529	4.762	354655	385647	3.121	2.519
13) L3 AR-1232-3	4.775	4.937	1021525	92293	4.461	1.222 #
14) L3 AR-1232-4	4.948	5.017	1226689	255113	10.732	3.866 #
15) L3 AR-1232-5	4.979	5.195	2181712	831652	29.724	11.199 #
16) L4 AR-1242-1	4.751	4.742	182822	109753	0.631	0.566
17) L4 AR-1242-2	4.775	4.762	1021525	385647	2.398	1.361 #
18) L4 AR-1242-3	4.843	4.937	481036	92293	1.758	0.634 #
19) L4 AR-1242-4	4.948	5.017	1226689	255113	5.444	1.799 #
20) L4 AR-1242-5	5.627	5.541	21124602	885867	99.799	4.875 #
21) L5 AR-1248-1	4.751	4.742	182822	109753	0.806	0.711
22) L5 AR-1248-2	4.979	4.994	2181712	655181	7.076	3.184 #
23) L5 AR-1248-3	5.217	5.017	10129917	255113	24.870	1.188 #
24) L5 AR-1248-4	5.572	5.195	10734289	831652	18.599	3.214 #
25) L5 AR-1248-5	5.627	5.586	21124602	932029	54.123	3.720 #
26) L6 AR-1254-1	5.572	5.541	10734289	885867	17.451	2.324 #
27) L6 AR-1254-2	5.729	5.684	16160895	2123858	30.169	6.401 #
28) L6 AR-1254-3	6.117	6.089	11405375	881828	13.585	1.829 #
29) L6 AR-1254-4	6.344	6.323	6637984	360872	13.800	1.384 #
30) L6 AR-1254-5	6.778	6.723	3146757	261853	4.066	0.735 #
31) L7 AR-1260-1	6.242	6.242	4682662	1214682	9.342	4.329 #
32) L7 AR-1260-2	6.417	6.427	13254930	29528	17.957	0.087 #
33) L7 AR-1260-3	6.807	6.582	5614624	278363	8.566	1.010 #
34) L7 AR-1260-4	7.077	7.045	9951428	373295	22.864	1.860 #
35) L7 AR-1260-5	7.298	7.278	256103	244425	0.203	0.546 #
36) L8 AR-1262-1	6.807	6.768	5614624	118983	5.495	0.292 #
37) L8 AR-1262-2	7.298	7.274	256103	99430	0.156	0.194
38) L8 AR-1262-3	7.596	7.564	6575438	8223255	10.243	45.806 #
39) L8 AR-1262-4	7.663	7.663f	2102598	-752	1.962	N.D. #
40) L8 AR-1262-5	8.158	8.114	456150	46611	1.018	0.441 #
41) L9 AR-1268-1	7.596	7.564	6575438	8223255	3.579	16.732 #

Data Path : Z:\pestpcbsrv\HPCHEM1\ECD_0\Data\P0071025\
 Data File : P0112200.D
 Signal(s) : Signal #1: ECD1A.ch Signal #2: ECD2B.ch
 Acq On : 10 Jul 2025 19:05
 Operator : YP/AJ
 Sample : I.BLK
 Misc :
 ALS Vial : 2 Sample Multiplier: 1

Instrument :
 ECD_0
 ClientSampleId :
 I.BLK

Integration File signal 1: autoint1.e
 Integration File signal 2: autoint2.e
 Quant Time: Jul 10 22:56:10 2025
 Quant Method : Z:\pestpcbsrv\HPCHEM1\ECD_0\methods\P0070825.M
 Quant Title : GC EXTRACTABLES
 QLast Update : Wed Jul 09 10:50:50 2025
 Response via : Initial Calibration
 Integrator: ChemStation

Volume Inj. : 2 µl
 Signal #1 Phase : ZB-MR1 Signal #2 Phase: ZB-MR2
 Signal #1 Info : 30Mx0.32mmx 0.50µ Signal #2 Info : 30M x 0.32mm x 0.25µm

	Compound	RT#1	RT#2	Resp#1	Resp#2	ng/ml	ng/ml
42)	L9 AR-1268-2	7.663	7.663f	2102598	-752	1.350	N.D. #
43)	L9 AR-1268-3	7.858	7.818	562866	127554	0.433	0.403
44)	L9 AR-1268-4	8.158	8.105	456150	50337	0.950	0.451 #
45)	L9 AR-1268-5	8.442	8.395	1241083	55745	0.380	0.077 #

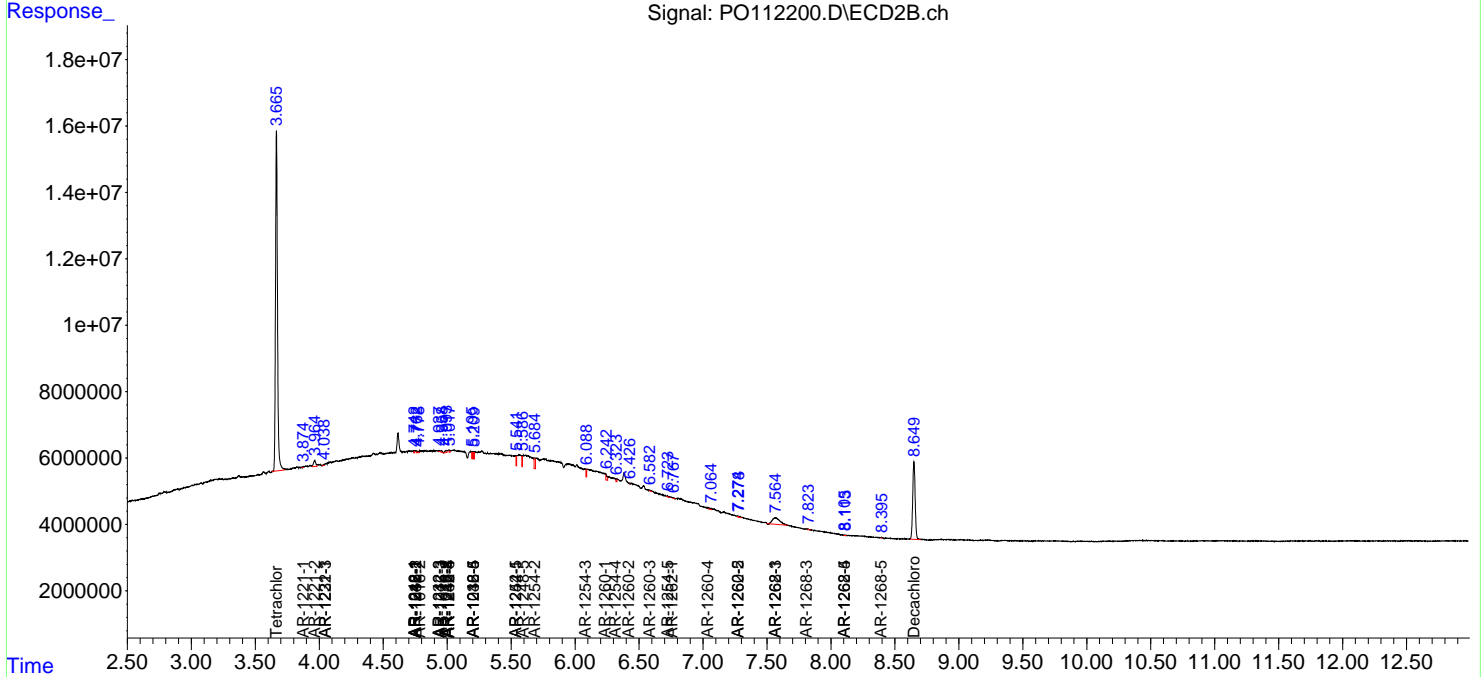
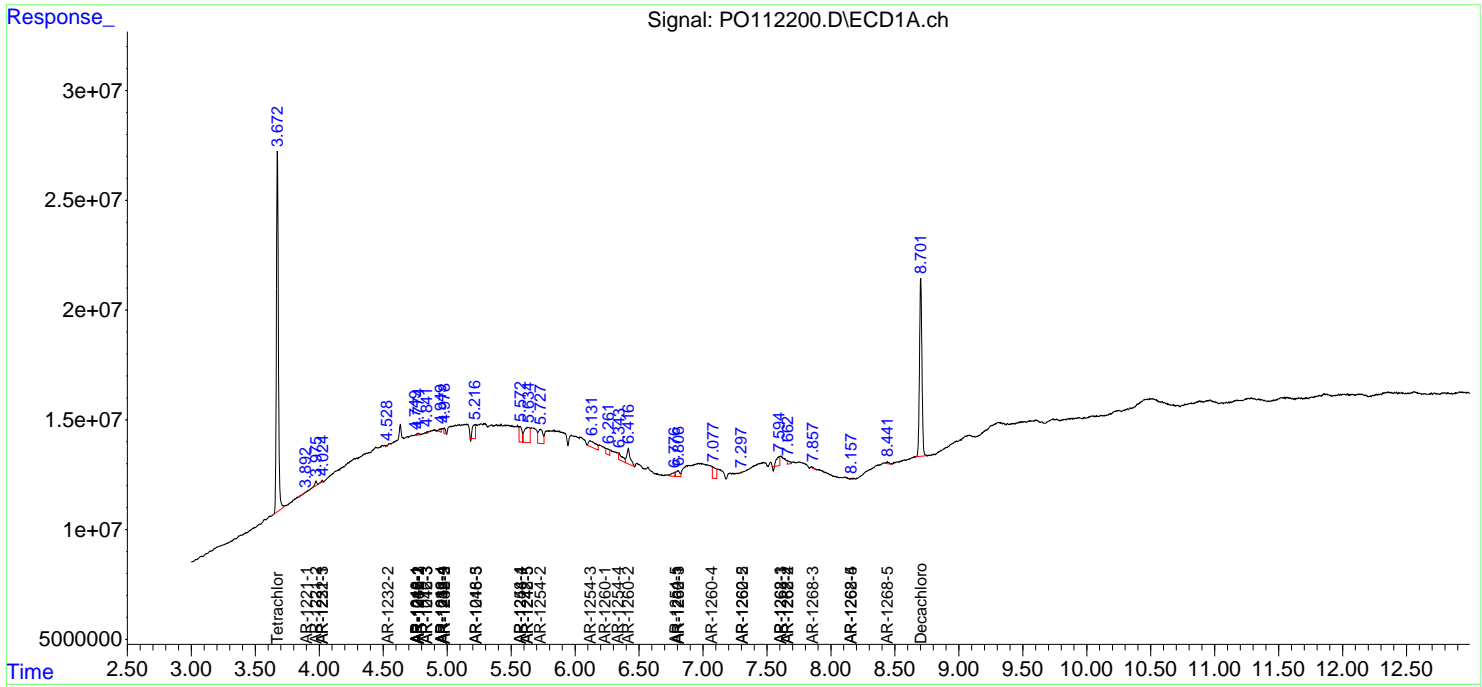
(f)=RT Delta > 1/2 Window (#)=Amounts differ by > 25% (m)=manual int.

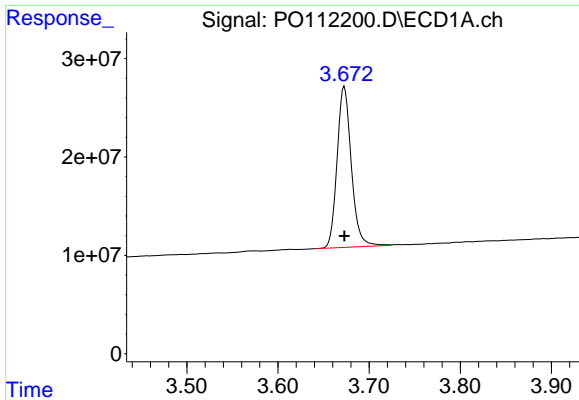
Data Path : Z:\pestpcbsrv\HPCHEM1\ECD_O\Data\PO071025\
 Data File : PO112200.D
 Signal(s) : Signal #1: ECD1A.ch Signal #2: ECD2B.ch
 Acq On : 10 Jul 2025 19:05
 Operator : YP/AJ
 Sample : I.BLK
 Misc :
 ALS Vial : 2 Sample Multiplier: 1

Instrument :
 ECD_O
 ClientSampleId :
 I.BLK

Integration File signal 1: autoint1.e
 Integration File signal 2: autoint2.e
 Quant Time: Jul 10 22:56:10 2025
 Quant Method : Z:\pestpcbsrv\HPCHEM1\ECD_O\methods\PO070825.M
 Quant Title : GC EXTRACTABLES
 QLast Update : Wed Jul 09 10:50:50 2025
 Response via : Initial Calibration
 Integrator: ChemStation

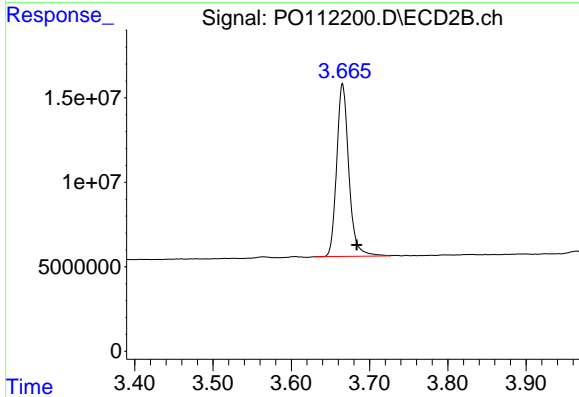
Volume Inj. : 2 µl
 Signal #1 Phase : ZB-MR1 Signal #2 Phase: ZB-MR2
 Signal #1 Info : 30Mx0.32mmx 0.50µ Signal #2 Info : 30M x 0.32mm x 0.25µm



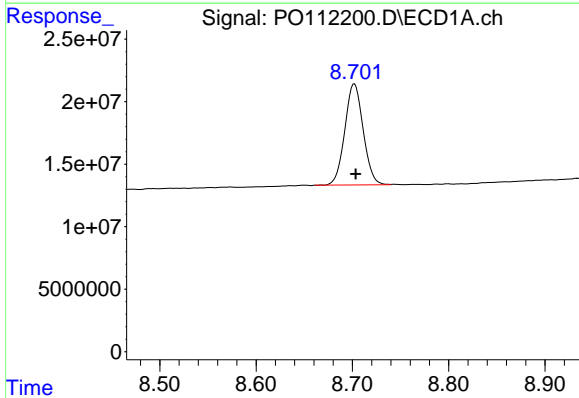


#1 Tetrachloro-m-xylene
 R.T.: 3.673 min
 Delta R.T.: 0.000 min
 Response: 177441785
 Conc: 17.93 ng/ml

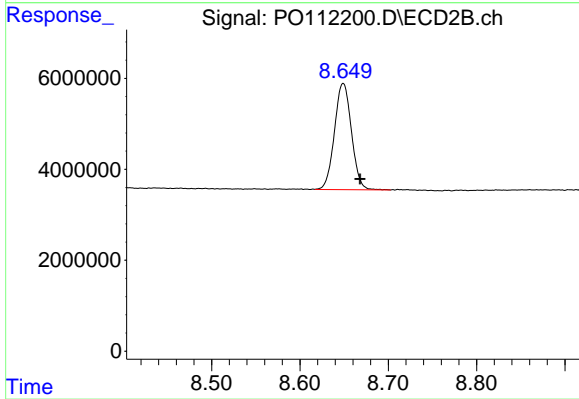
Instrument :
 ECD_O
 ClientSampleId :
 I.BLK



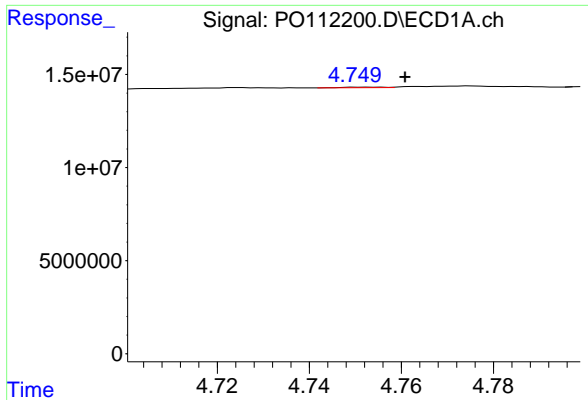
#1 Tetrachloro-m-xylene
 R.T.: 3.666 min
 Delta R.T.: -0.018 min
 Response: 110328162
 Conc: 17.32 ng/ml



#2 Decachlorobiphenyl
 R.T.: 8.702 min
 Delta R.T.: -0.001 min
 Response: 106931424
 Conc: 15.64 ng/ml



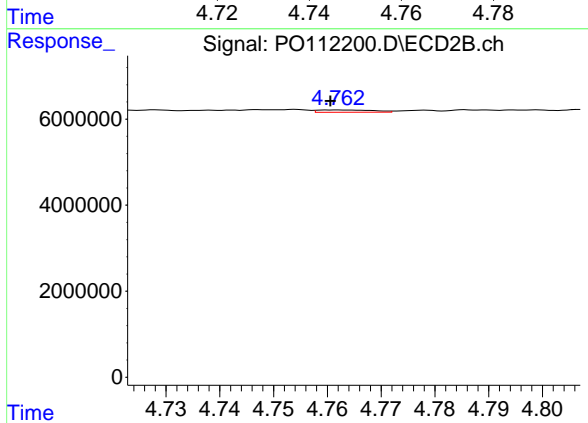
#2 Decachlorobiphenyl
 R.T.: 8.649 min
 Delta R.T.: -0.019 min
 Response: 31253279
 Conc: 18.13 ng/ml



#3 AR-1016-1

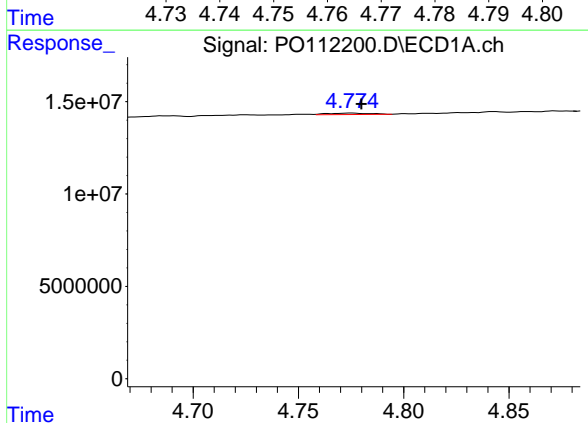
R.T.: 4.751 min
 Delta R.T.: -0.010 min
 Response: 182822
 Conc: 0.54 ng/ml

Instrument :
 ECD_O
 ClientSampleId :
 I.BLK



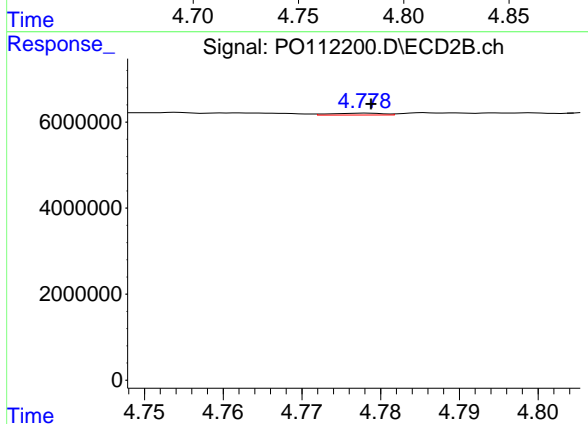
#3 AR-1016-1

R.T.: 4.762 min
 Delta R.T.: 0.001 min
 Response: 385647
 Conc: 1.73 ng/ml



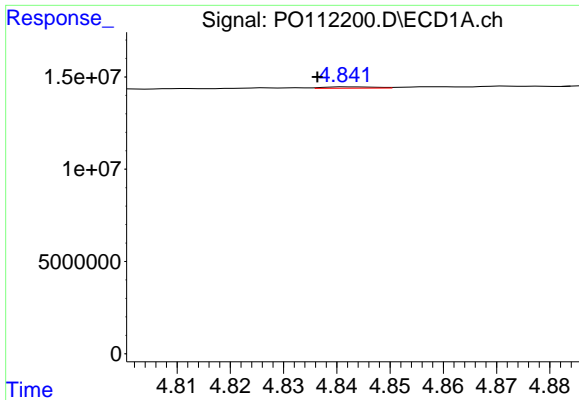
#4 AR-1016-2

R.T.: 4.775 min
 Delta R.T.: -0.005 min
 Response: 1021525
 Conc: 2.05 ng/ml



#4 AR-1016-2

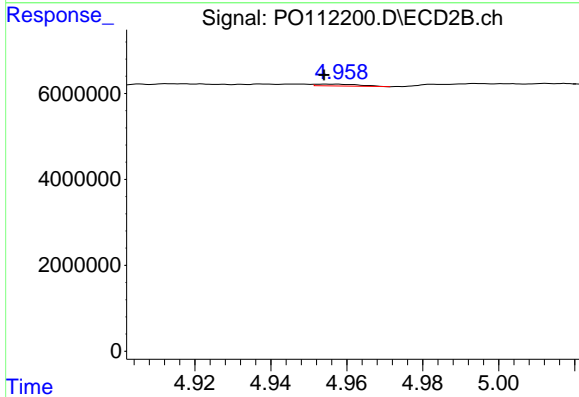
R.T.: 4.778 min
 Delta R.T.: 0.000 min
 Response: 201586
 Conc: 0.61 ng/ml



#5 AR-1016-3

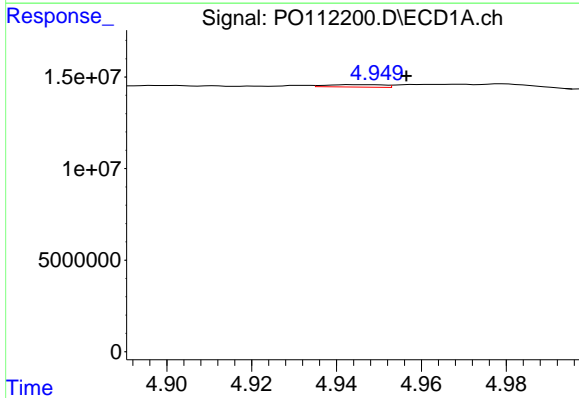
R.T.: 4.843 min
 Delta R.T.: 0.006 min
 Response: 481036
 Conc: 1.49 ng/ml

Instrument :
 ECD_O
 ClientSampleId :
 I.BLK



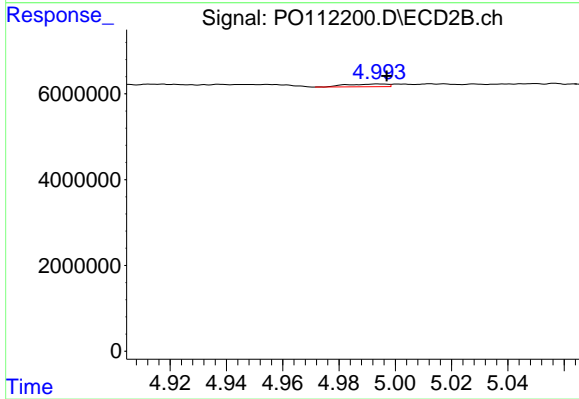
#5 AR-1016-3

R.T.: 4.955 min
 Delta R.T.: 0.000 min
 Response: 347583
 Conc: 2.05 ng/ml



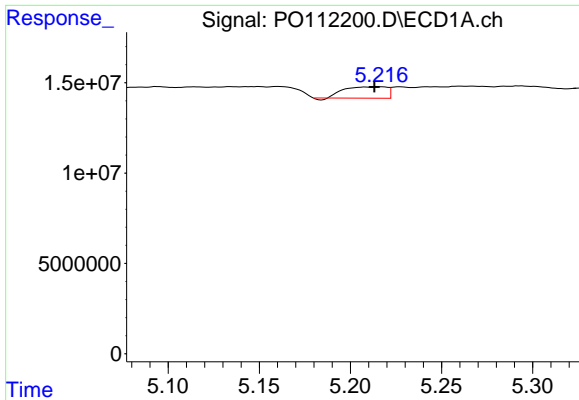
#6 AR-1016-4

R.T.: 4.948 min
 Delta R.T.: -0.008 min
 Response: 1226689
 Conc: 4.78 ng/ml



#6 AR-1016-4

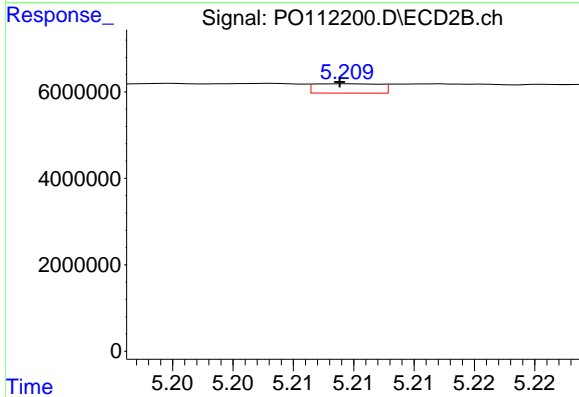
R.T.: 4.994 min
 Delta R.T.: -0.003 min
 Response: 655181
 Conc: 4.77 ng/ml



#7 AR-1016-5

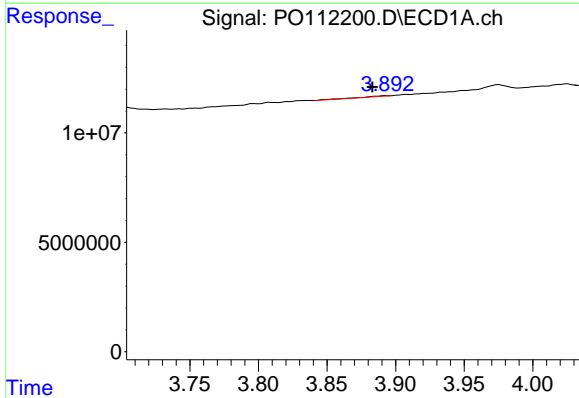
R.T.: 5.217 min
 Delta R.T.: 0.004 min
 Response: 10129917
 Conc: 37.02 ng/ml

Instrument :
 ECD_O
 ClientSampleId :
 I.BLK



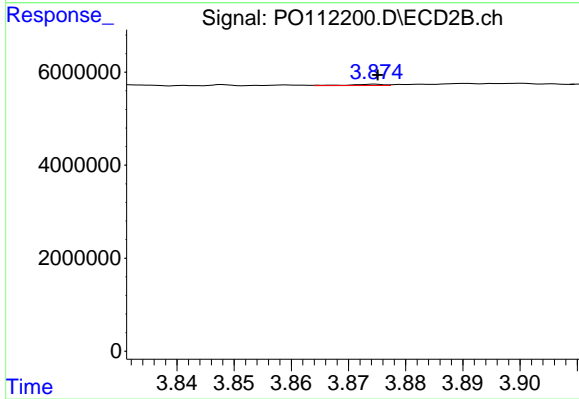
#7 AR-1016-5

R.T.: 5.209 min
 Delta R.T.: 0.000 min
 Response: 818098
 Conc: 4.74 ng/ml



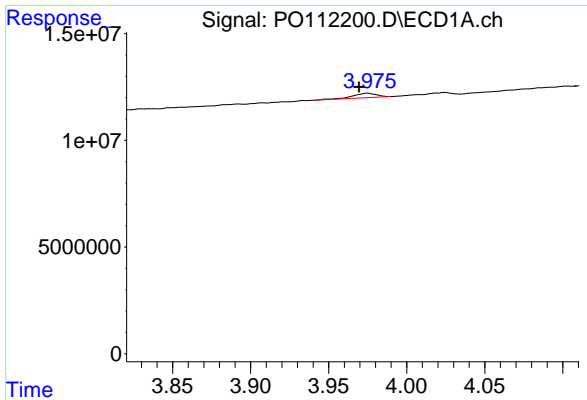
#8 AR-1221-1

R.T.: 3.893 min
 Delta R.T.: 0.010 min
 Response: 405703
 Conc: 3.48 ng/ml



#8 AR-1221-1

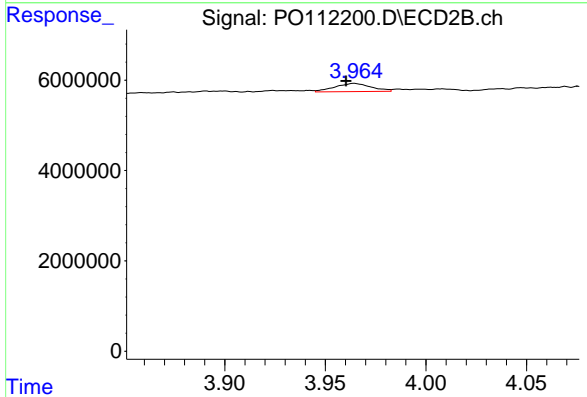
R.T.: 3.875 min
 Delta R.T.: 0.000 min
 Response: 118607
 Conc: 1.44 ng/ml



#9 AR-1221-2

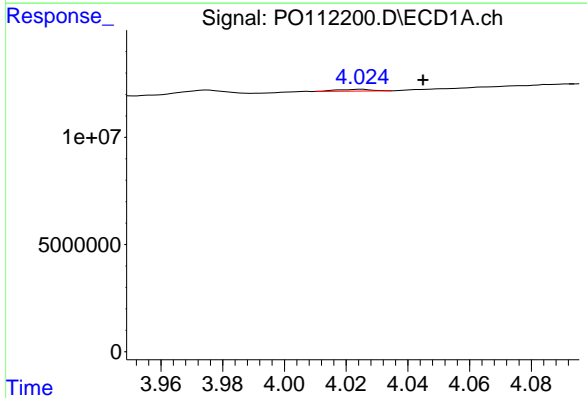
R.T.: 3.975 min
 Delta R.T.: 0.006 min
 Response: 2226361
 Conc: 28.24 ng/ml

Instrument :
 ECD_O
 ClientSampleId :
 I.BLK



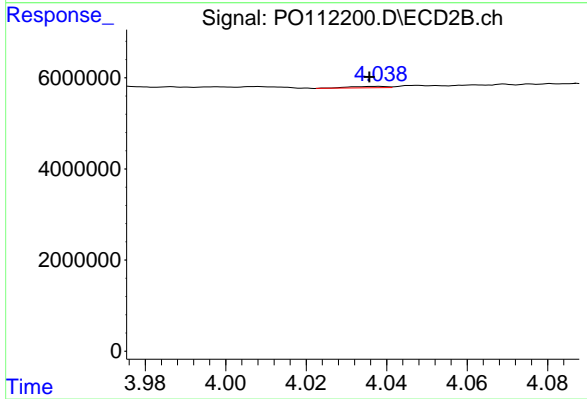
#9 AR-1221-2

R.T.: 3.964 min
 Delta R.T.: 0.004 min
 Response: 2315651
 Conc: 39.01 ng/ml



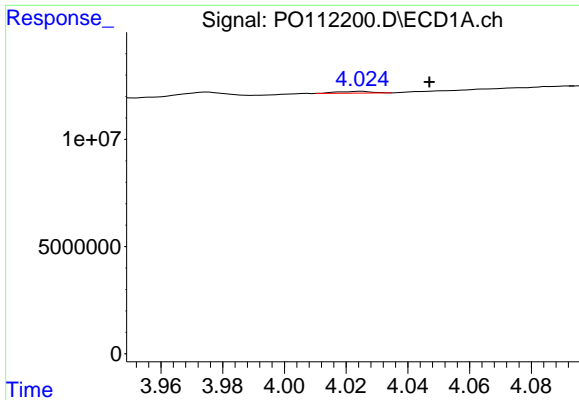
#10 AR-1221-3

R.T.: 4.025 min
 Delta R.T.: -0.020 min
 Response: 649090
 Conc: 2.41 ng/ml



#10 AR-1221-3

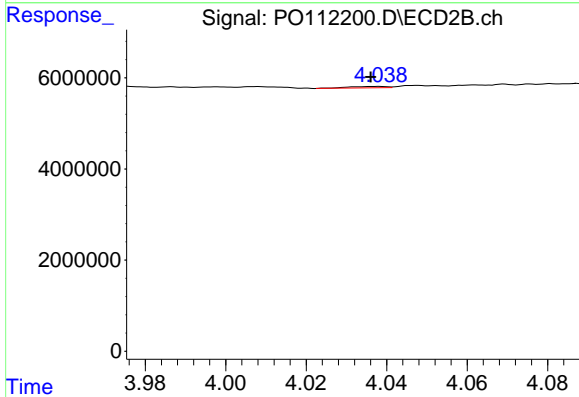
R.T.: 4.038 min
 Delta R.T.: 0.002 min
 Response: 207575
 Conc: 1.10 ng/ml



#11 AR-1232-1

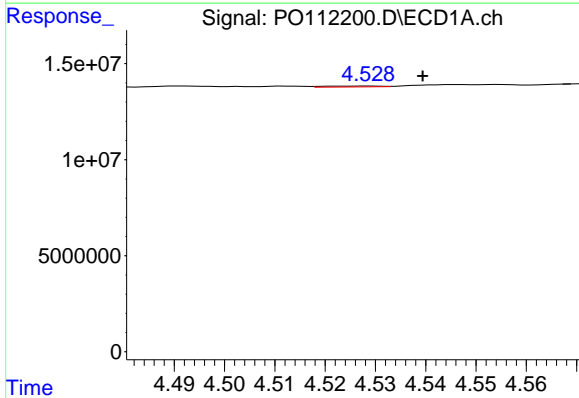
R.T.: 4.025 min
 Delta R.T.: -0.022 min
 Response: 649090
 Conc: 3.02 ng/ml

Instrument :
 ECD_O
 ClientSampleId :
 I.BLK



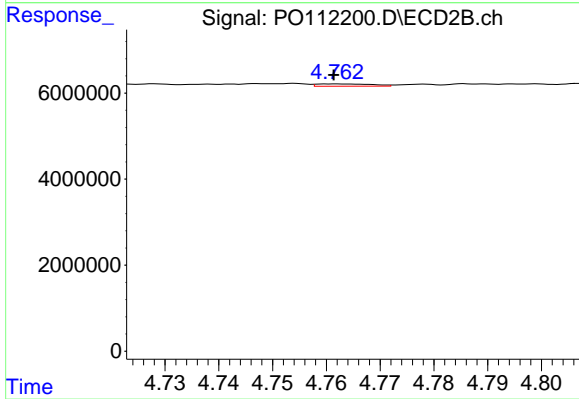
#11 AR-1232-1

R.T.: 4.038 min
 Delta R.T.: 0.002 min
 Response: 207575
 Conc: 1.38 ng/ml



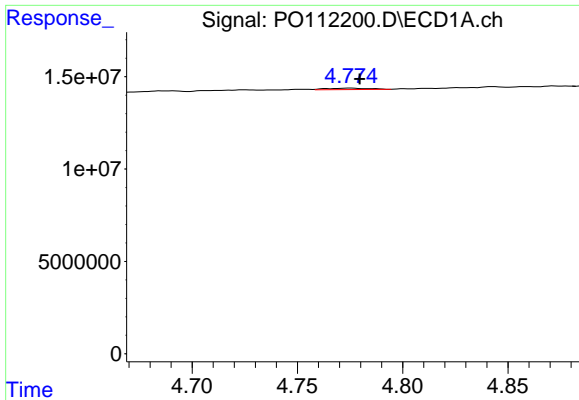
#12 AR-1232-2

R.T.: 4.529 min
 Delta R.T.: -0.011 min
 Response: 354655
 Conc: 3.12 ng/ml



#12 AR-1232-2

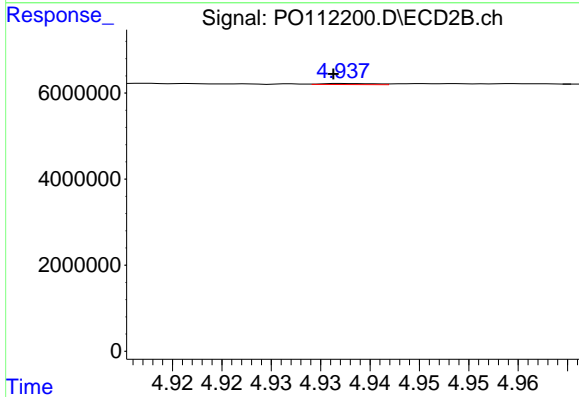
R.T.: 4.762 min
 Delta R.T.: 0.000 min
 Response: 385647
 Conc: 2.52 ng/ml



#13 AR-1232-3

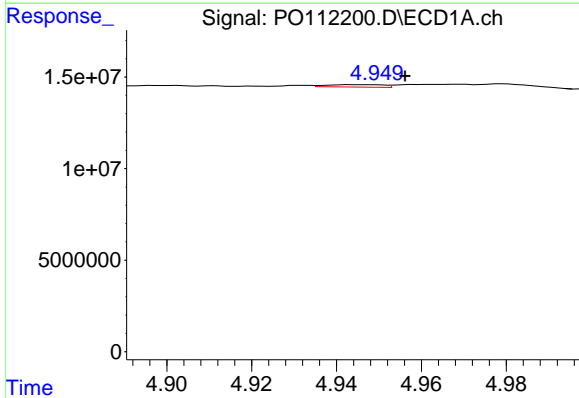
R.T.: 4.775 min
 Delta R.T.: -0.005 min
 Response: 1021525
 Conc: 4.46 ng/ml

Instrument :
 ECD_O
 ClientSampleId :
 I.BLK



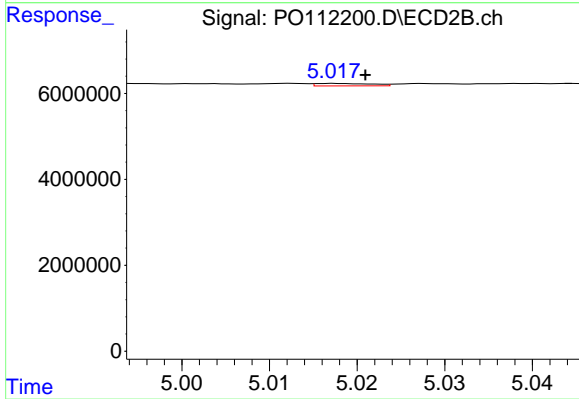
#13 AR-1232-3

R.T.: 4.937 min
 Delta R.T.: 0.001 min
 Response: 92293
 Conc: 1.22 ng/ml



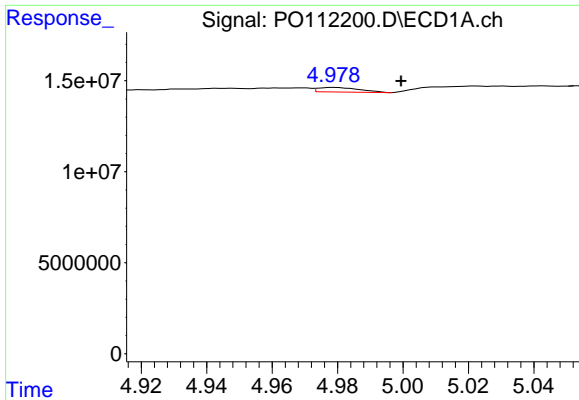
#14 AR-1232-4

R.T.: 4.948 min
 Delta R.T.: -0.008 min
 Response: 1226689
 Conc: 10.73 ng/ml



#14 AR-1232-4

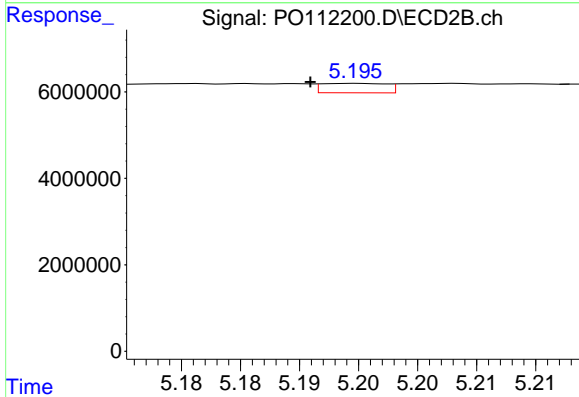
R.T.: 5.017 min
 Delta R.T.: -0.004 min
 Response: 255113
 Conc: 3.87 ng/ml



#15 AR-1232-5

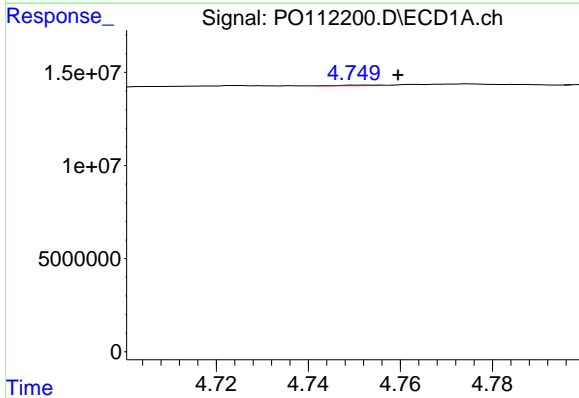
R.T.: 4.979 min
 Delta R.T.: -0.020 min
 Response: 2181712
 Conc: 29.72 ng/ml

Instrument :
 ECD_O
 ClientSampleId :
 I.BLK



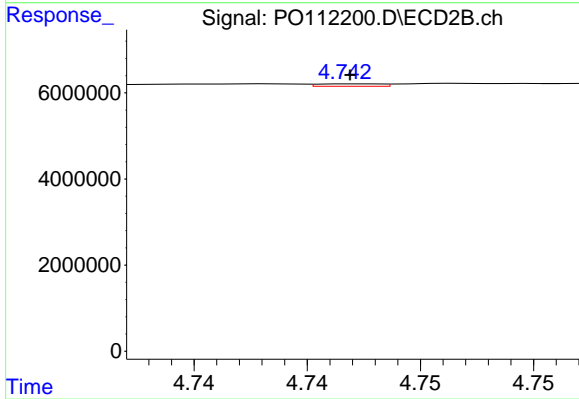
#15 AR-1232-5

R.T.: 5.195 min
 Delta R.T.: 0.004 min
 Response: 831652
 Conc: 11.20 ng/ml



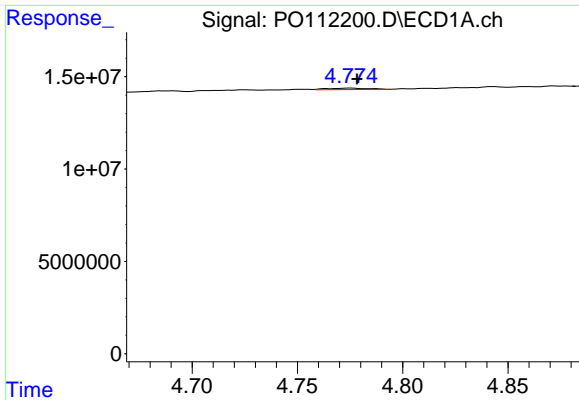
#16 AR-1242-1

R.T.: 4.751 min
 Delta R.T.: -0.008 min
 Response: 182822
 Conc: 0.63 ng/ml



#16 AR-1242-1

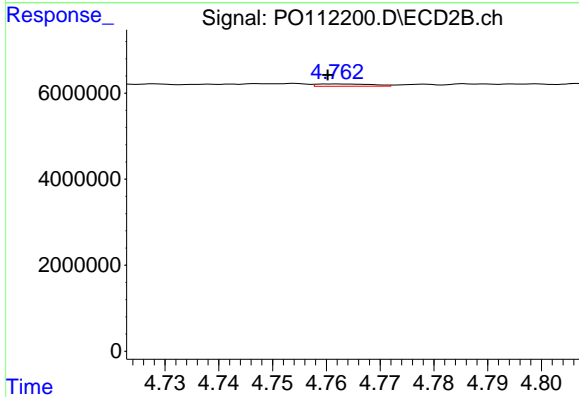
R.T.: 4.742 min
 Delta R.T.: 0.000 min
 Response: 109753
 Conc: 0.57 ng/ml



#17 AR-1242-2

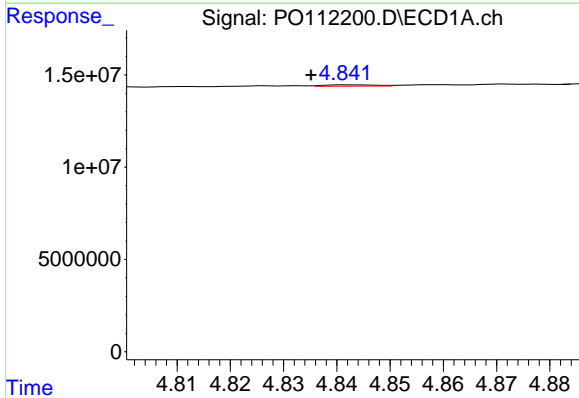
R.T.: 4.775 min
 Delta R.T.: -0.003 min
 Response: 1021525
 Conc: 2.40 ng/ml

Instrument :
 ECD_O
 ClientSampleId :
 I.BLK



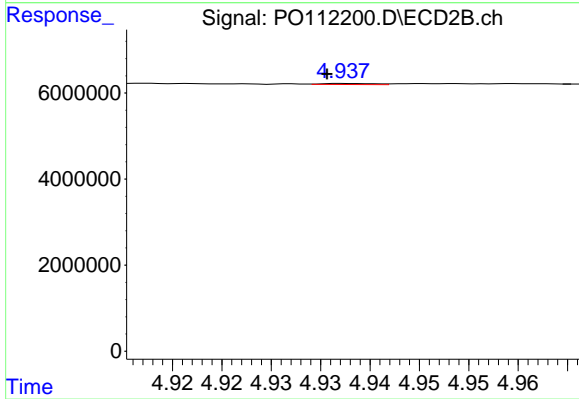
#17 AR-1242-2

R.T.: 4.762 min
 Delta R.T.: 0.002 min
 Response: 385647
 Conc: 1.36 ng/ml



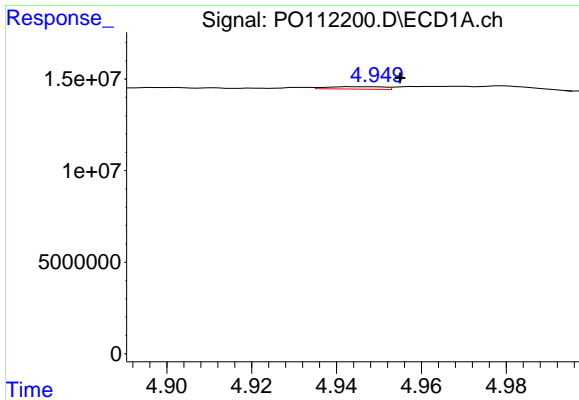
#18 AR-1242-3

R.T.: 4.843 min
 Delta R.T.: 0.007 min
 Response: 481036
 Conc: 1.76 ng/ml



#18 AR-1242-3

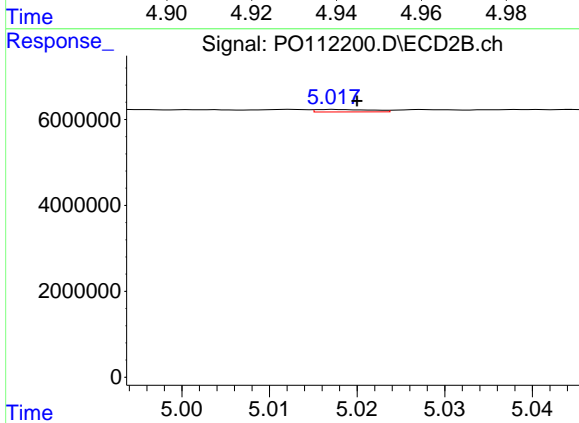
R.T.: 4.937 min
 Delta R.T.: 0.002 min
 Response: 92293
 Conc: 0.63 ng/ml



#19 AR-1242-4

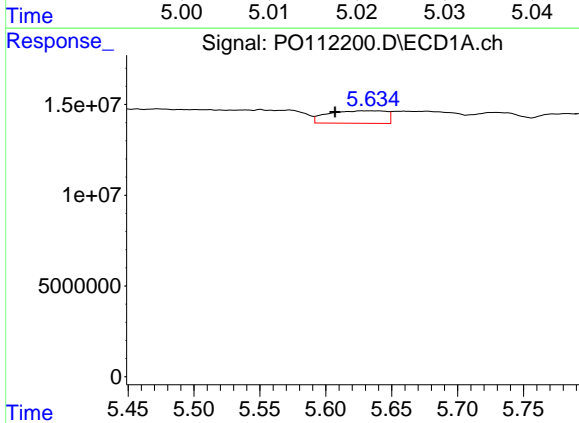
R.T.: 4.948 min
 Delta R.T.: -0.007 min
 Response: 1226689
 Conc: 5.44 ng/ml

Instrument :
 ECD_O
 ClientSampleId :
 I.BLK



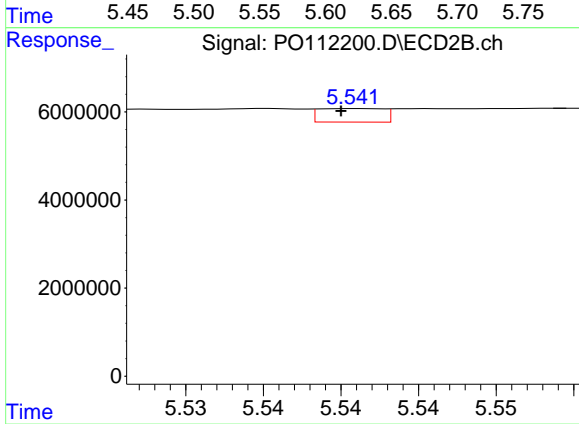
#19 AR-1242-4

R.T.: 5.017 min
 Delta R.T.: -0.003 min
 Response: 255113
 Conc: 1.80 ng/ml



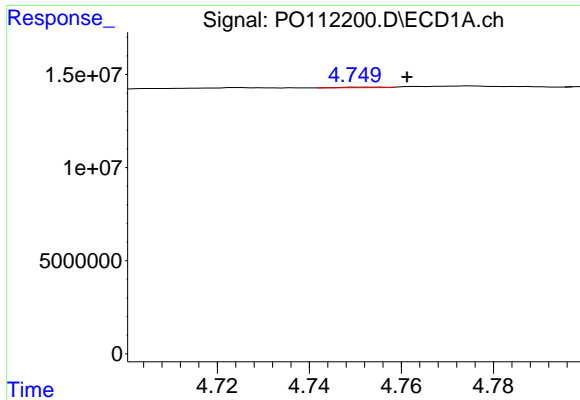
#20 AR-1242-5

R.T.: 5.627 min
 Delta R.T.: 0.020 min
 Response: 21124602
 Conc: 99.80 ng/ml



#20 AR-1242-5

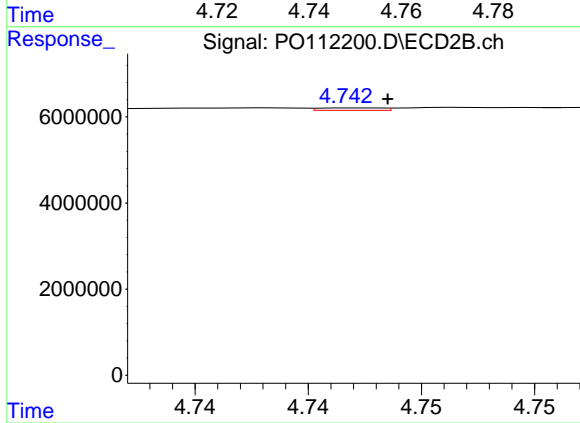
R.T.: 5.541 min
 Delta R.T.: 0.001 min
 Response: 885867
 Conc: 4.87 ng/ml



#21 AR-1248-1

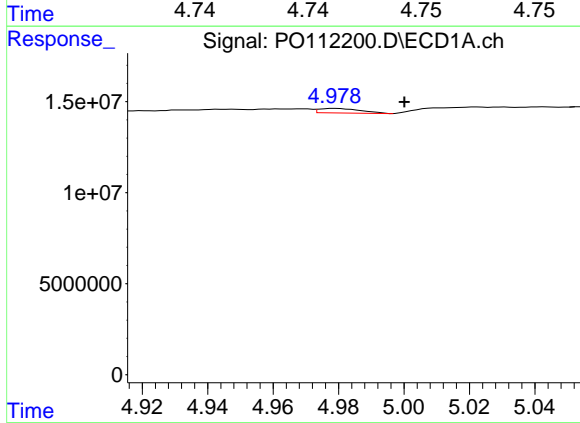
R.T.: 4.751 min
 Delta R.T.: -0.010 min
 Response: 182822
 Conc: 0.81 ng/ml

Instrument :
 ECD_O
 ClientSampleId :
 I.BLK



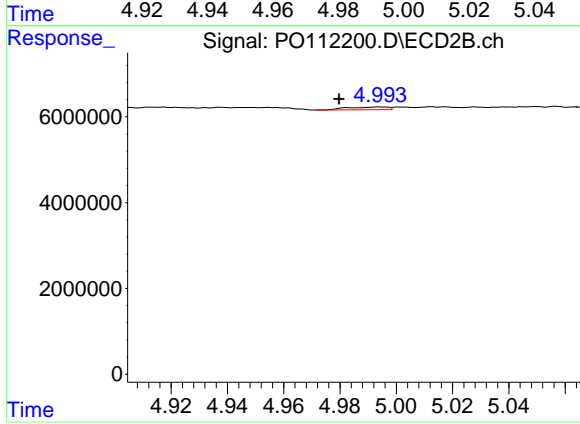
#21 AR-1248-1

R.T.: 4.742 min
 Delta R.T.: -0.001 min
 Response: 109753
 Conc: 0.71 ng/ml



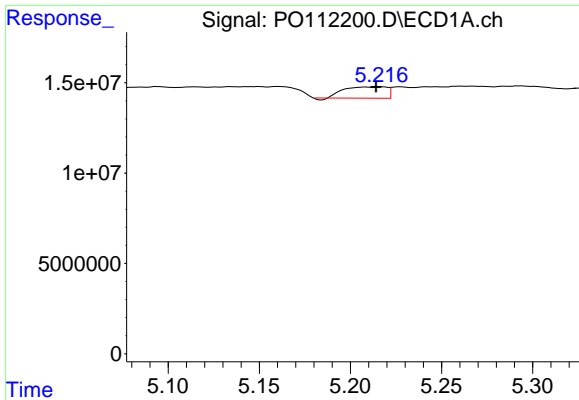
#22 AR-1248-2

R.T.: 4.979 min
 Delta R.T.: -0.021 min
 Response: 2181712
 Conc: 7.08 ng/ml



#22 AR-1248-2

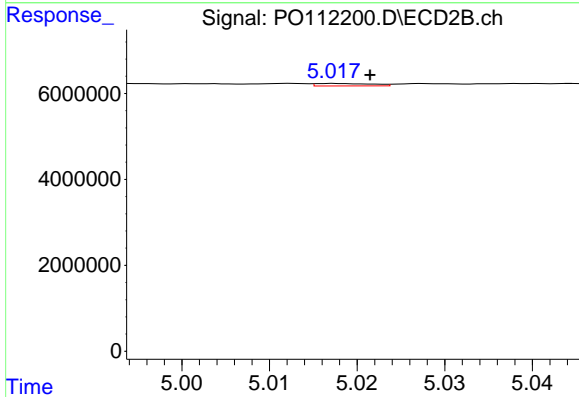
R.T.: 4.994 min
 Delta R.T.: 0.014 min
 Response: 655181
 Conc: 3.18 ng/ml



#23 AR-1248-3

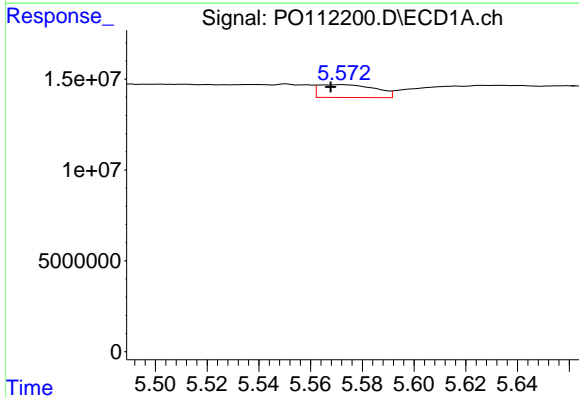
R.T.: 5.217 min
 Delta R.T.: 0.003 min
 Response: 10129917
 Conc: 24.87 ng/ml

Instrument :
 ECD_O
 ClientSampleId :
 I.BLK



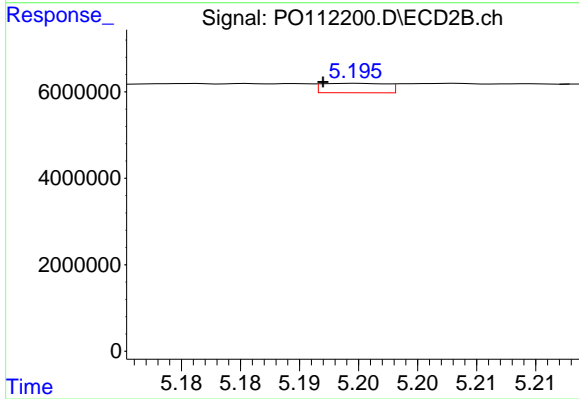
#23 AR-1248-3

R.T.: 5.017 min
 Delta R.T.: -0.004 min
 Response: 255113
 Conc: 1.19 ng/ml



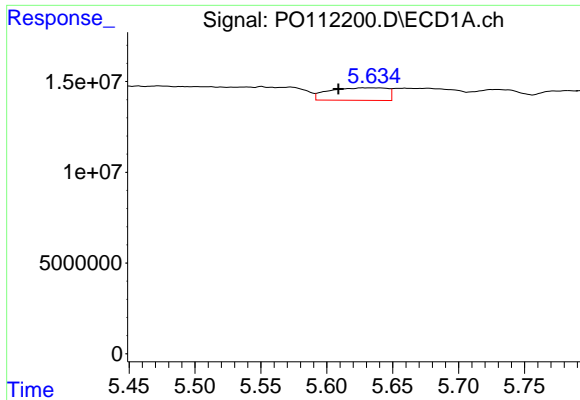
#24 AR-1248-4

R.T.: 5.572 min
 Delta R.T.: 0.005 min
 Response: 10734289
 Conc: 18.60 ng/ml



#24 AR-1248-4

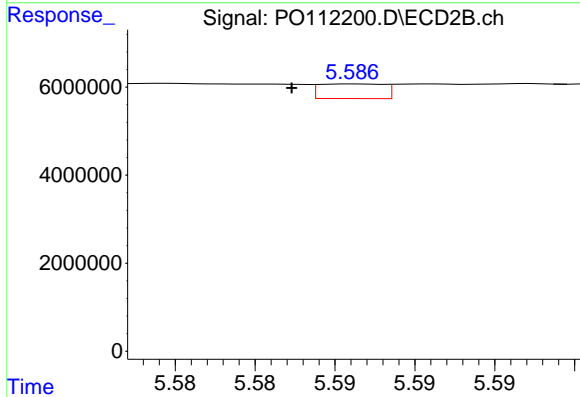
R.T.: 5.195 min
 Delta R.T.: 0.003 min
 Response: 831652
 Conc: 3.21 ng/ml



#25 AR-1248-5

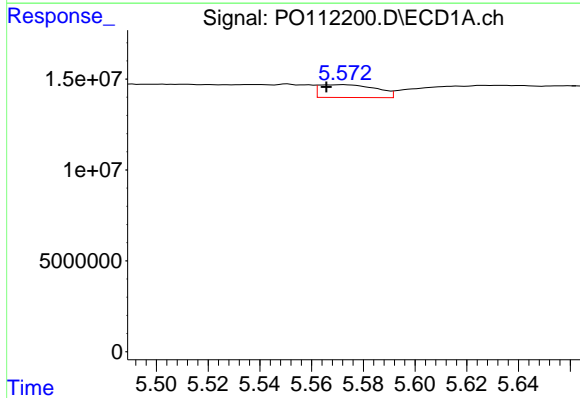
R.T.: 5.627 min
 Delta R.T.: 0.018 min
 Response: 21124602
 Conc: 54.12 ng/ml

Instrument :
 ECD_O
 ClientSampleId :
 I.BLK



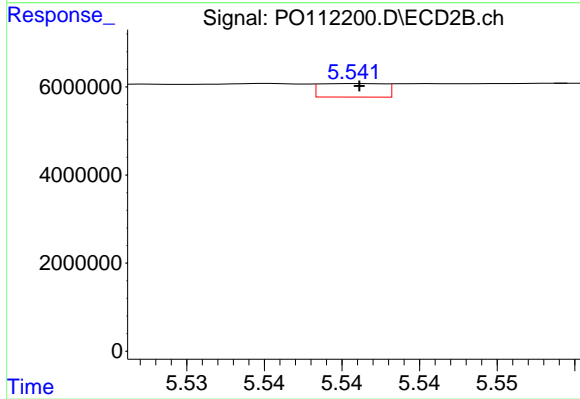
#25 AR-1248-5

R.T.: 5.586 min
 Delta R.T.: 0.004 min
 Response: 932029
 Conc: 3.72 ng/ml



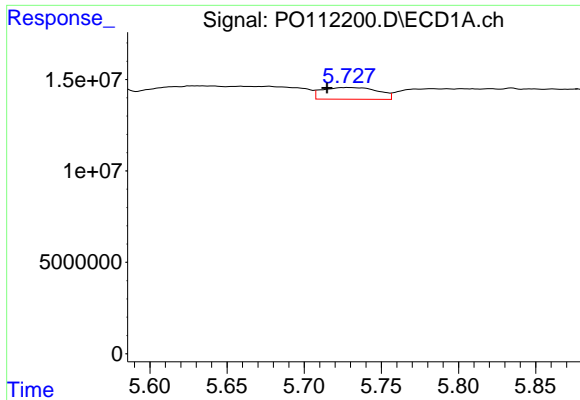
#26 AR-1254-1

R.T.: 5.572 min
 Delta R.T.: 0.007 min
 Response: 10734289
 Conc: 17.45 ng/ml



#26 AR-1254-1

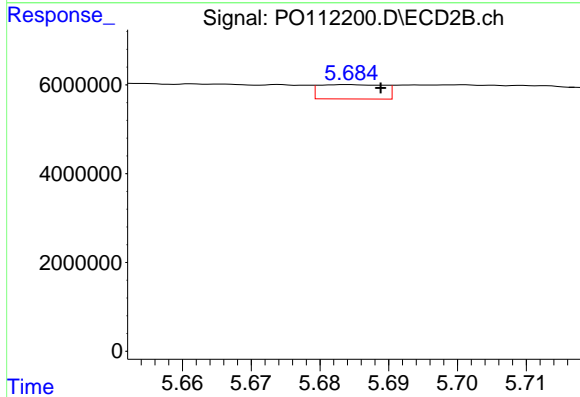
R.T.: 5.541 min
 Delta R.T.: 0.000 min
 Response: 885867
 Conc: 2.32 ng/ml



#27 AR-1254-2

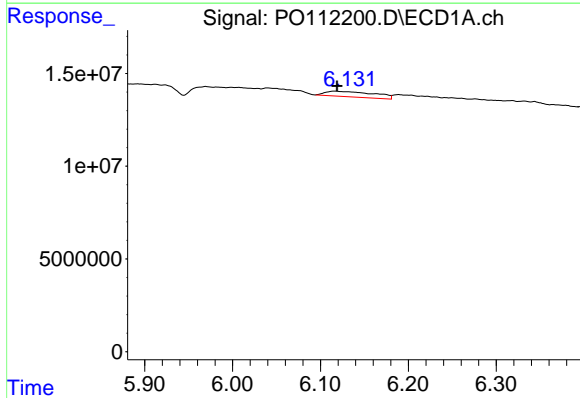
R.T.: 5.729 min
 Delta R.T.: 0.014 min
 Response: 16160895
 Conc: 30.17 ng/ml

Instrument :
 ECD_O
 ClientSampleId :
 I.BLK



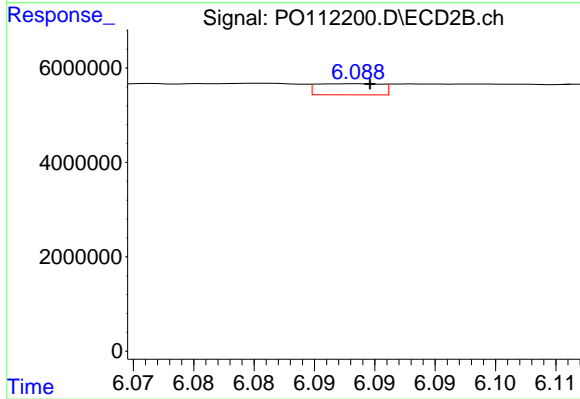
#27 AR-1254-2

R.T.: 5.684 min
 Delta R.T.: -0.005 min
 Response: 2123858
 Conc: 6.40 ng/ml



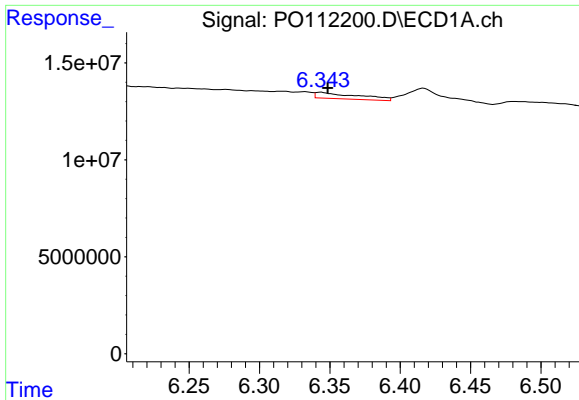
#28 AR-1254-3

R.T.: 6.117 min
 Delta R.T.: -0.002 min
 Response: 11405375
 Conc: 13.58 ng/ml



#28 AR-1254-3

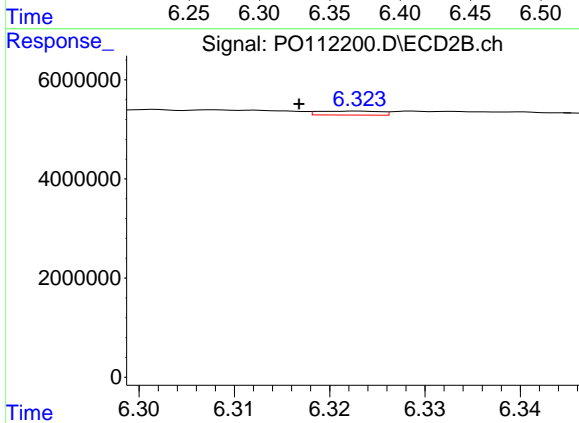
R.T.: 6.089 min
 Delta R.T.: -0.001 min
 Response: 881828
 Conc: 1.83 ng/ml



#29 AR-1254-4

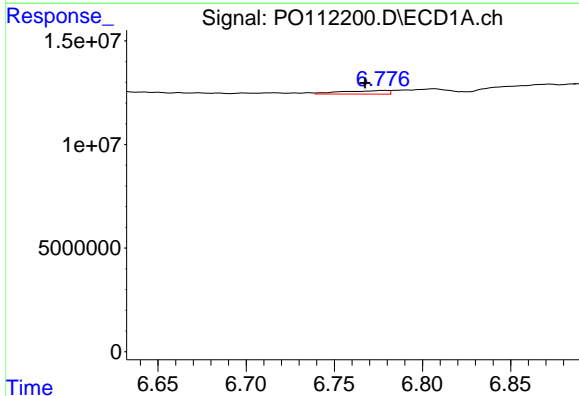
R.T.: 6.344 min
 Delta R.T.: -0.005 min
 Response: 6637984
 Conc: 13.80 ng/ml

Instrument :
 ECD_O
 ClientSampleId :
 I.BLK



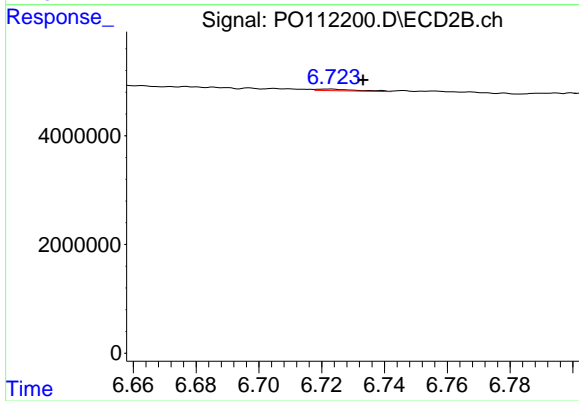
#29 AR-1254-4

R.T.: 6.323 min
 Delta R.T.: 0.006 min
 Response: 360872
 Conc: 1.38 ng/ml



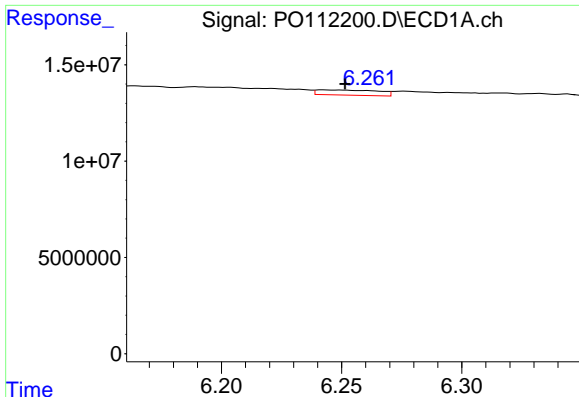
#30 AR-1254-5

R.T.: 6.778 min
 Delta R.T.: 0.011 min
 Response: 3146757
 Conc: 4.07 ng/ml



#30 AR-1254-5

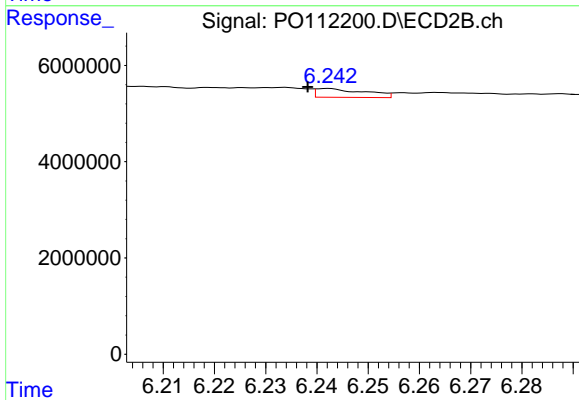
R.T.: 6.723 min
 Delta R.T.: -0.010 min
 Response: 261853
 Conc: 0.73 ng/ml



#31 AR-1260-1

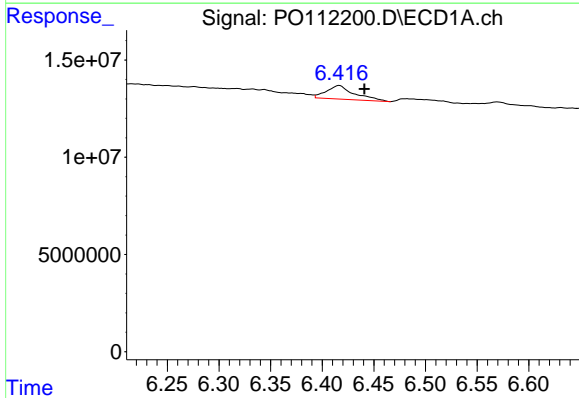
R.T.: 6.242 min
 Delta R.T.: -0.009 min
 Response: 4682662
 Conc: 9.34 ng/ml

Instrument :
 ECD_O
 ClientSampleId :
 I.BLK



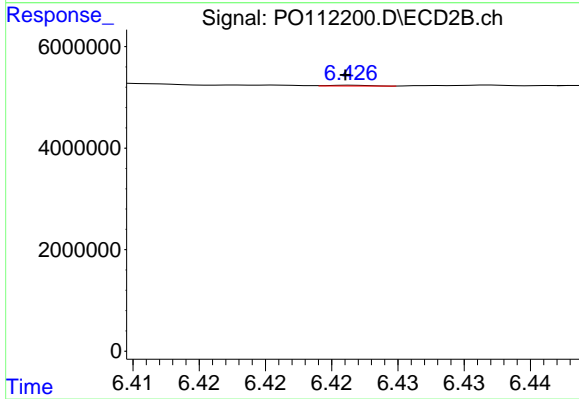
#31 AR-1260-1

R.T.: 6.242 min
 Delta R.T.: 0.004 min
 Response: 1214682
 Conc: 4.33 ng/ml



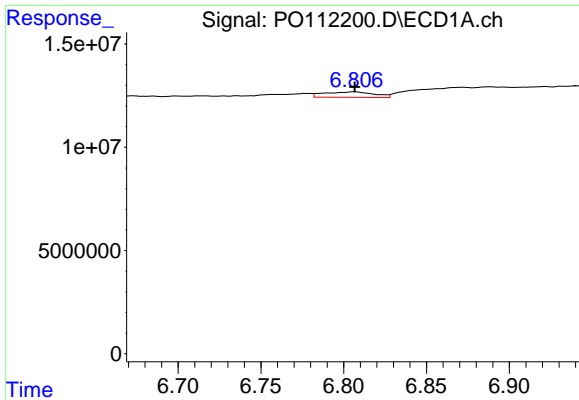
#32 AR-1260-2

R.T.: 6.417 min
 Delta R.T.: -0.024 min
 Response: 13254930
 Conc: 17.96 ng/ml



#32 AR-1260-2

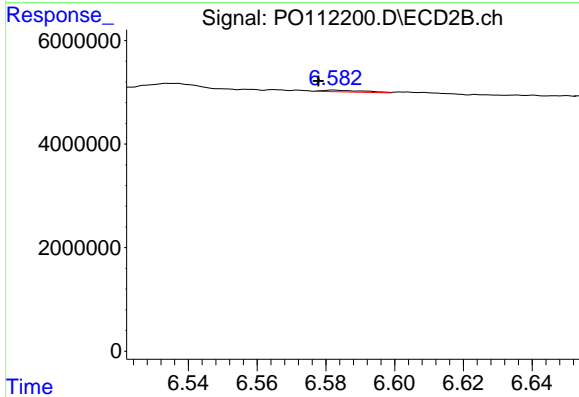
R.T.: 6.427 min
 Delta R.T.: 0.000 min
 Response: 29528
 Conc: 0.09 ng/ml



#33 AR-1260-3

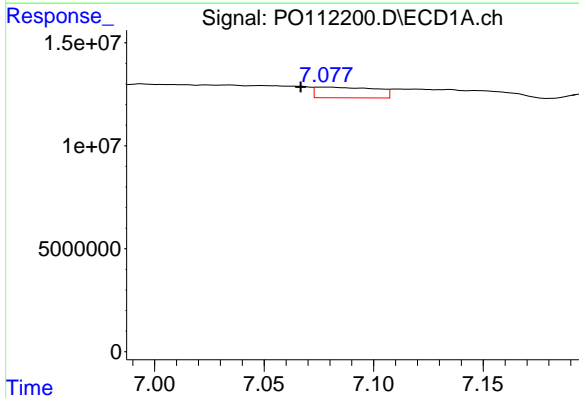
R.T.: 6.807 min
 Delta R.T.: 0.000 min
 Response: 5614624
 Conc: 8.57 ng/ml

Instrument :
 ECD_O
 ClientSampleId :
 I.BLK



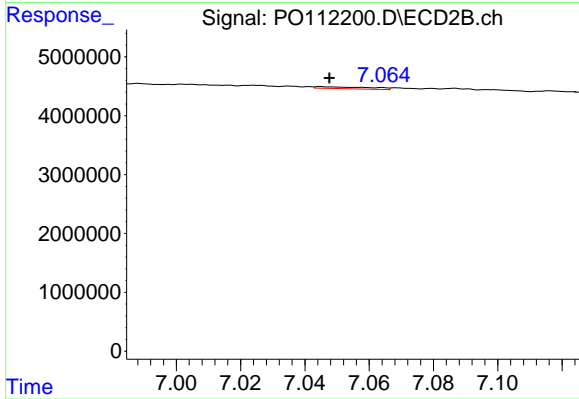
#33 AR-1260-3

R.T.: 6.582 min
 Delta R.T.: 0.004 min
 Response: 278363
 Conc: 1.01 ng/ml



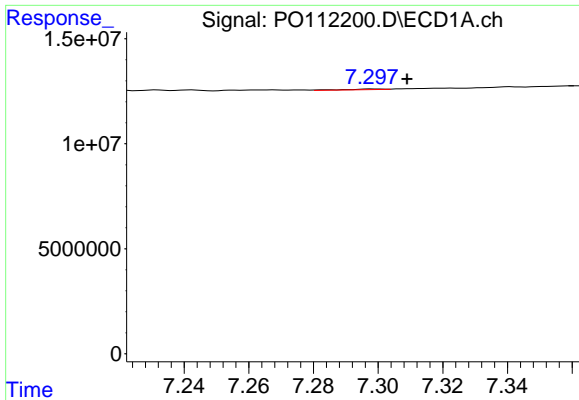
#34 AR-1260-4

R.T.: 7.077 min
 Delta R.T.: 0.010 min
 Response: 9951428
 Conc: 22.86 ng/ml



#34 AR-1260-4

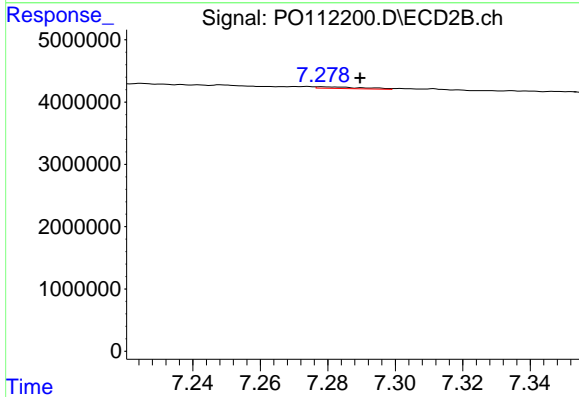
R.T.: 7.045 min
 Delta R.T.: -0.003 min
 Response: 373295
 Conc: 1.86 ng/ml



#35 AR-1260-5

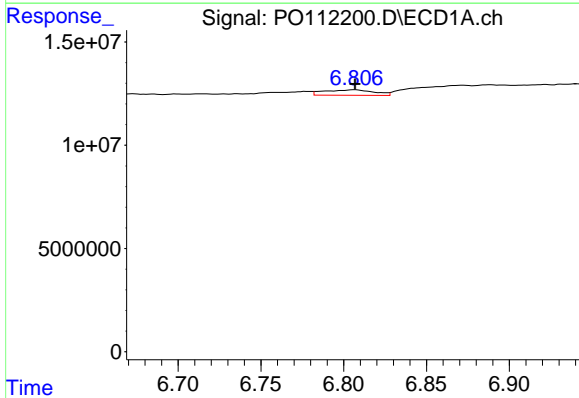
R.T.: 7.298 min
 Delta R.T.: -0.011 min
 Response: 256103
 Conc: 0.20 ng/ml

Instrument :
 ECD_O
 ClientSampleId :
 I.BLK



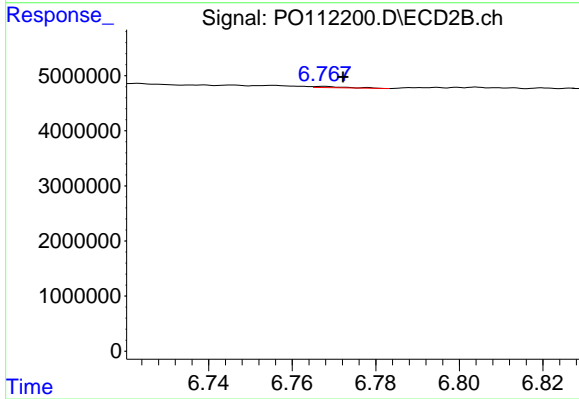
#35 AR-1260-5

R.T.: 7.278 min
 Delta R.T.: -0.011 min
 Response: 244425
 Conc: 0.55 ng/ml



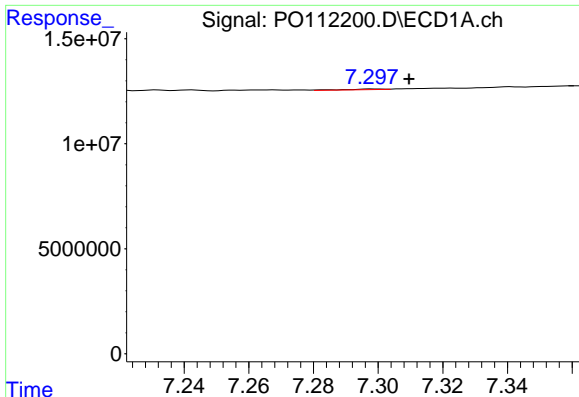
#36 AR-1262-1

R.T.: 6.807 min
 Delta R.T.: 0.000 min
 Response: 5614624
 Conc: 5.50 ng/ml



#36 AR-1262-1

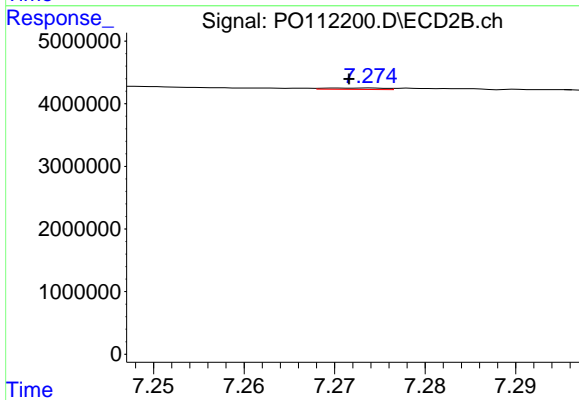
R.T.: 6.768 min
 Delta R.T.: -0.005 min
 Response: 118983
 Conc: 0.29 ng/ml



#37 AR-1262-2

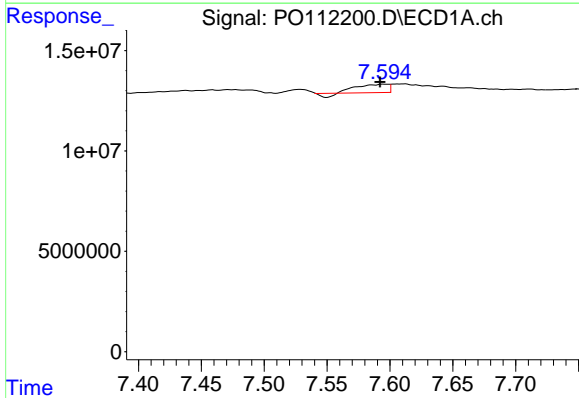
R.T.: 7.298 min
 Delta R.T.: -0.011 min
 Response: 256103
 Conc: 0.16 ng/ml

Instrument :
 ECD_O
 ClientSampleId :
 I.BLK



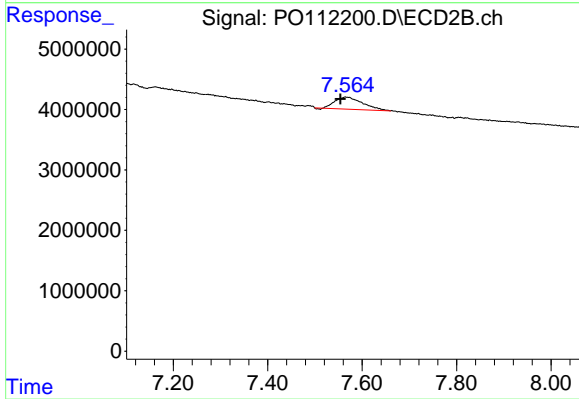
#37 AR-1262-2

R.T.: 7.274 min
 Delta R.T.: 0.002 min
 Response: 99430
 Conc: 0.19 ng/ml



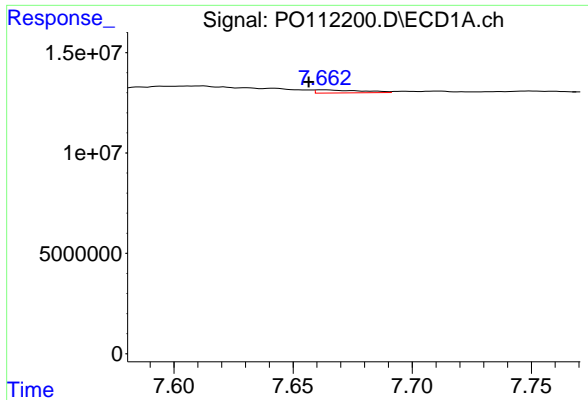
#38 AR-1262-3

R.T.: 7.596 min
 Delta R.T.: 0.004 min
 Response: 6575438
 Conc: 10.24 ng/ml



#38 AR-1262-3

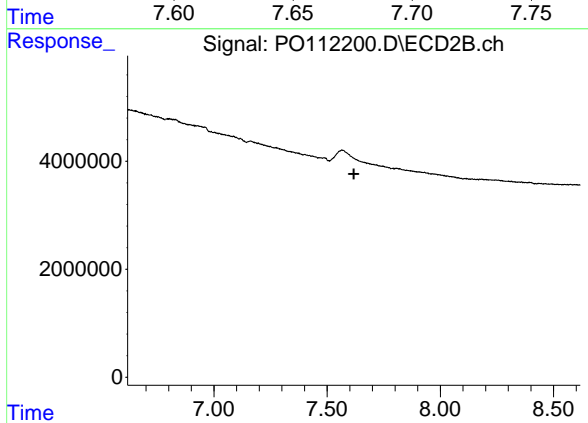
R.T.: 7.564 min
 Delta R.T.: 0.010 min
 Response: 8223255
 Conc: 45.81 ng/ml



#39 AR-1262-4

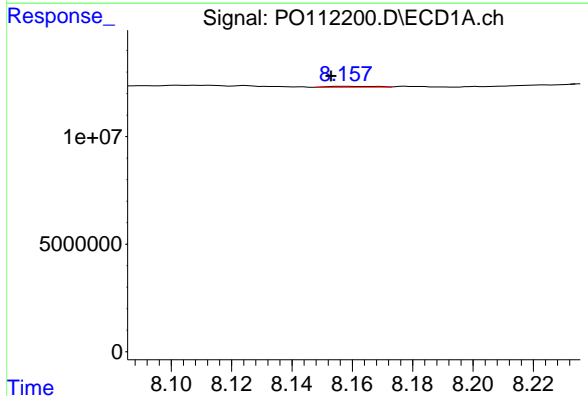
R.T.: 7.663 min
 Delta R.T.: 0.007 min
 Response: 2102598
 Conc: 1.96 ng/ml

Instrument :
 ECD_O
 ClientSampleId :
 I.BLK



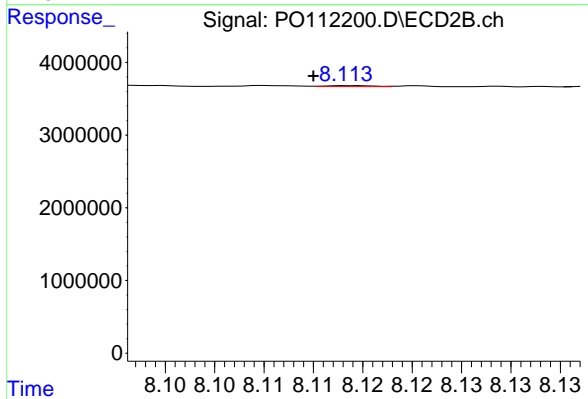
#39 AR-1262-4

R.T.: 7.663 min
 Delta R.T.: 0.045 min
 Response: -752
 Conc: N.D.



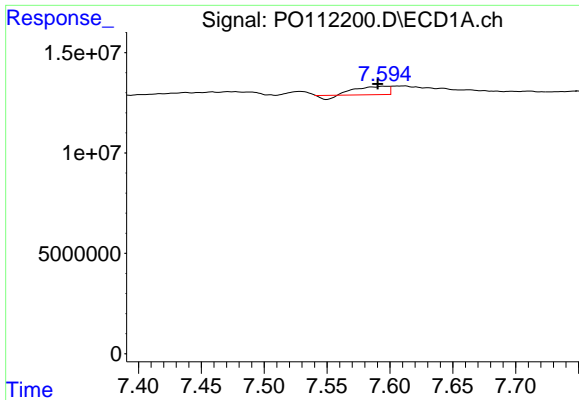
#40 AR-1262-5

R.T.: 8.158 min
 Delta R.T.: 0.005 min
 Response: 456150
 Conc: 1.02 ng/ml



#40 AR-1262-5

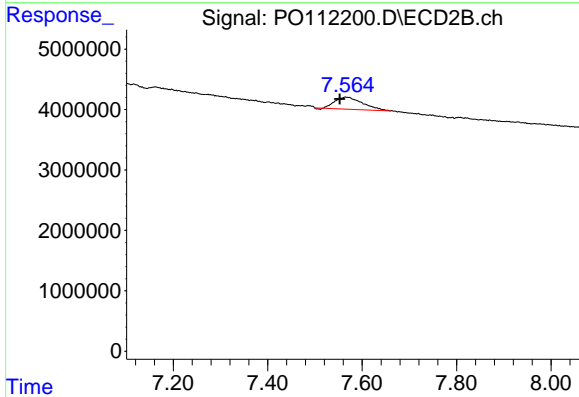
R.T.: 8.114 min
 Delta R.T.: 0.004 min
 Response: 46611
 Conc: 0.44 ng/ml



#41 AR-1268-1

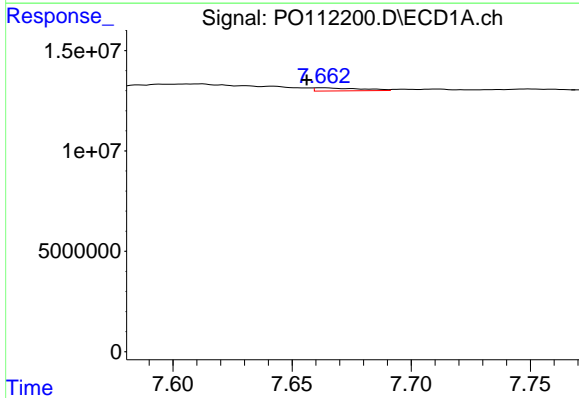
R.T.: 7.596 min
 Delta R.T.: 0.006 min
 Response: 6575438
 Conc: 3.58 ng/ml

Instrument :
 ECD_O
 ClientSampleId :
 I.BLK



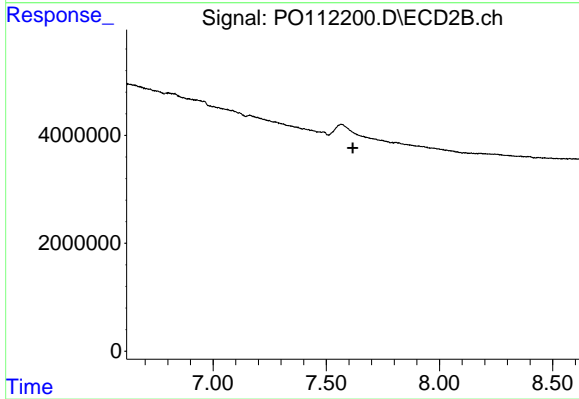
#41 AR-1268-1

R.T.: 7.564 min
 Delta R.T.: 0.012 min
 Response: 8223255
 Conc: 16.73 ng/ml



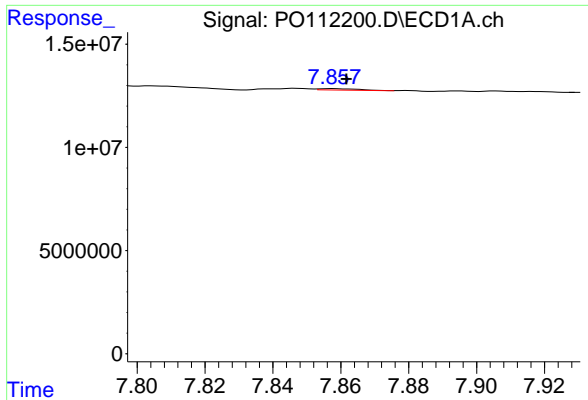
#42 AR-1268-2

R.T.: 7.663 min
 Delta R.T.: 0.007 min
 Response: 2102598
 Conc: 1.35 ng/ml



#42 AR-1268-2

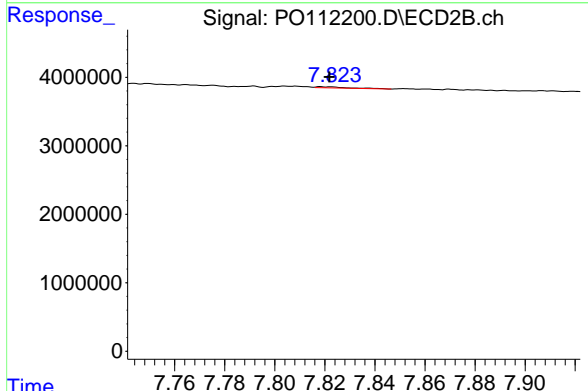
R.T.: 7.663 min
 Delta R.T.: 0.045 min
 Response: -752
 Conc: N.D.



#43 AR-1268-3

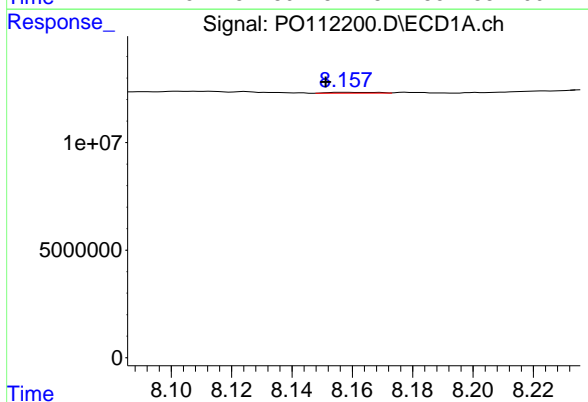
R.T.: 7.858 min
 Delta R.T.: -0.004 min
 Response: 562866
 Conc: 0.43 ng/ml

Instrument :
 ECD_O
 ClientSampleId :
 I.BLK



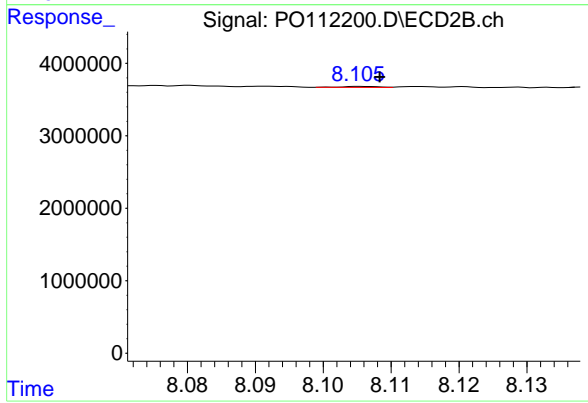
#43 AR-1268-3

R.T.: 7.818 min
 Delta R.T.: -0.004 min
 Response: 127554
 Conc: 0.40 ng/ml



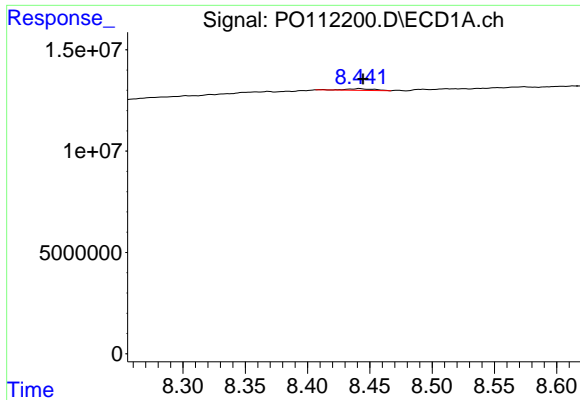
#44 AR-1268-4

R.T.: 8.158 min
 Delta R.T.: 0.006 min
 Response: 456150
 Conc: 0.95 ng/ml



#44 AR-1268-4

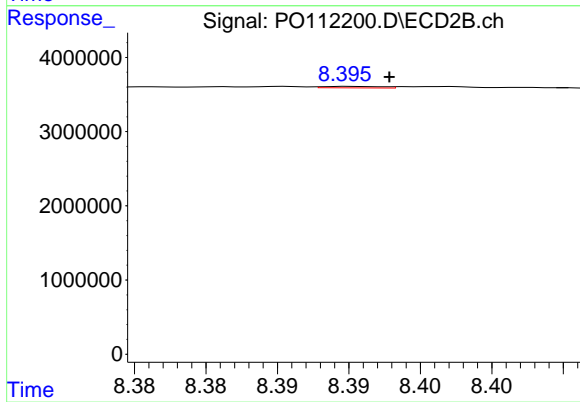
R.T.: 8.105 min
 Delta R.T.: -0.003 min
 Response: 50337
 Conc: 0.45 ng/ml



#45 AR-1268-5

R.T.: 8.442 min
 Delta R.T.: -0.003 min
 Response: 1241083
 Conc: 0.38 ng/ml

Instrument :
 ECD_O
 ClientSampleId :
 I.BLK



#45 AR-1268-5

R.T.: 8.395 min
 Delta R.T.: -0.003 min
 Response: 55745
 Conc: 0.08 ng/ml