

Data Path : Z:\pestpcbsrv\HPCHEM1\ECD\_0\Data\P0071025\  
 Data File : PO112201.D  
 Signal(s) : Signal #1: ECD1A.ch Signal #2: ECD2B.ch  
 Acq On : 10 Jul 2025 19:23  
 Operator : YP/AJ  
 Sample : Q2551-02  
 Misc :  
 ALS Vial : 17 Sample Multiplier: 1

Instrument :  
 ECD\_0  
 ClientSampleId :  
 VNJ-204

Integration File signal 1: autoint1.e  
 Integration File signal 2: autoint2.e  
 Quant Time: Jul 10 22:56:46 2025  
 Quant Method : Z:\pestpcbsrv\HPCHEM1\ECD\_0\methods\P0070825.M  
 Quant Title : GC EXTRACTABLES  
 QLast Update : Wed Jul 09 10:50:50 2025  
 Response via : Initial Calibration  
 Integrator: ChemStation

Volume Inj. : 2 µl  
 Signal #1 Phase : ZB-MR1 Signal #2 Phase: ZB-MR2  
 Signal #1 Info : 30Mx0.32mmx 0.50µ Signal #2 Info : 30M x 0.32mm x 0.25µm

Compound	RT#1	RT#2	Resp#1	Resp#2	ng/ml	ng/ml
System Monitoring Compounds						
1) SA Tetrachlo...	3.670	3.664	298.2E6	216.9E6	30.134	34.043
2) SA Decachlor...	8.699	8.648	94878530	27210546	13.877	15.788
Target Compounds						
3) L1 AR-1016-1	4.760	4.751	2068197	12952376	6.081	58.126 #
4) L1 AR-1016-2	4.795	4.777	3719167	7199921	7.479	21.878 #
5) L1 AR-1016-3	4.825	4.962	12011468	3186565	37.105	18.759 #
6) L1 AR-1016-4	4.952	4.988	5766583	7171518	22.456	52.260 #
7) L1 AR-1016-5	5.198	5.211	244664	3063632	0.894	17.765 #
8) L2 AR-1221-1	3.873	3.864	72587635	50330860	622.461	611.591
9) L2 AR-1221-2	3.975	3.963	643908	18483680	8.167	311.417 #
10) L2 AR-1221-3	4.046	4.035	4917334	17668284	18.241	93.594 #
11) L3 AR-1232-1	4.046	4.035	4917334	17668284	22.907	117.711 #
12) L3 AR-1232-2	4.544	4.751	56737118	12952376	499.284	84.609 #
13) L3 AR-1232-3	4.795	4.934	3719167	3928966	16.240	52.035 #
14) L3 AR-1232-4	4.952	5.044	5766583	9112467	50.453	138.092 #
15) L3 AR-1232-5	5.007	5.211	17737089	3063632	241.649	41.256 #
16) L4 AR-1242-1	4.760	4.751	2068197	12952376	7.141	66.814 #
17) L4 AR-1242-2	4.795	4.751	3719167	12952376	8.732	45.711 #
18) L4 AR-1242-3	4.825	4.934	12011468	3928966	43.888	26.970 #
19) L4 AR-1242-4	4.952	5.044	5766583	9112467	25.593	64.244 #
20) L4 AR-1242-5	5.606	5.547	139.2E6	29209681	657.698	160.728 #
21) L5 AR-1248-1	4.760	4.751	2068197	12952376	9.115	83.906 #
22) L5 AR-1248-2	5.007	4.988	17737089	7171518	57.527	34.852 #
23) L5 AR-1248-3	5.198	5.044	244664	9112467	0.601	42.423 #
24) L5 AR-1248-4	5.571	5.211	62703893	3063632	108.644	11.841 #
25) L5 AR-1248-5	5.606	5.581	139.2E6	86511236	356.684	345.286
26) L6 AR-1254-1	5.571	5.547	62703893	29209681	101.939	76.632
27) L6 AR-1254-2	5.713	5.688	60447833	18485849	112.842	55.712 #
28) L6 AR-1254-3	6.093	6.063	30583808	23510993	36.428	48.774 #
29) L6 AR-1254-4	6.341	6.312	37713387	11017605	78.403	42.262 #
30) L6 AR-1254-5	6.762	6.729	36930904	18761972	47.718	52.649
31) L7 AR-1260-1	6.239	6.240	35283656	24006520	70.393	85.566
32) L7 AR-1260-2	6.438	6.405	26162188	7993375	35.444	23.510 #
33) L7 AR-1260-3	6.825	6.558	4015499	2404790	6.126	8.726 #
34) L7 AR-1260-4	7.071	7.035	58959743	17442035	135.462	86.930 #
35) L7 AR-1260-5	7.305	7.309	19081498	2048985	15.114	4.576 #
36) L8 AR-1262-1	6.825	6.791	4015499	1444366	3.930	3.546
37) L8 AR-1262-2	7.305	7.268	19081498	6945265	11.640	13.550
38) L8 AR-1262-3	7.617	7.581	2411689	1145269	3.757	6.379 #
39) L8 AR-1262-4	7.659	7.620	25958970	10244063	24.228	35.213 #
40) L8 AR-1262-5	8.132	8.093	29797373	538958	66.491	5.095 #
41) L9 AR-1268-1	7.617	7.581	2411689	1145269	1.313	2.330 #

Data Path : Z:\pestpcbsrv\HPCHEM1\ECD\_0\Data\P0071025\  
 Data File : P0112201.D  
 Signal(s) : Signal #1: ECD1A.ch Signal #2: ECD2B.ch  
 Acq On : 10 Jul 2025 19:23  
 Operator : YP/AJ  
 Sample : Q2551-02  
 Misc :  
 ALS Vial : 17 Sample Multiplier: 1

Instrument :  
 ECD\_0  
 ClientSampleId :  
 VNJ-204

Integration File signal 1: autoint1.e  
 Integration File signal 2: autoint2.e  
 Quant Time: Jul 10 22:56:46 2025  
 Quant Method : Z:\pestpcbsrv\HPCHEM1\ECD\_0\methods\P0070825.M  
 Quant Title : GC EXTRACTABLES  
 QLast Update : Wed Jul 09 10:50:50 2025  
 Response via : Initial Calibration  
 Integrator: ChemStation

Volume Inj. : 2 µl  
 Signal #1 Phase : ZB-MR1 Signal #2 Phase: ZB-MR2  
 Signal #1 Info : 30Mx0.32mmx 0.50µ Signal #2 Info : 30M x 0.32mm x 0.25µm

	Compound	RT#1	RT#2	Resp#1	Resp#2	ng/ml	ng/ml
42)	L9 AR-1268-2	7.659	7.620	25958970	10244063	16.666	24.555 #
43)	L9 AR-1268-3	7.871	7.833	-2567788	3485993	N.D.	11.018 #
44)	L9 AR-1268-4	8.132	8.093	29797373	538958	62.025	4.833 #
45)	L9 AR-1268-5	8.439	8.393	1551364	393896	0.475	0.542

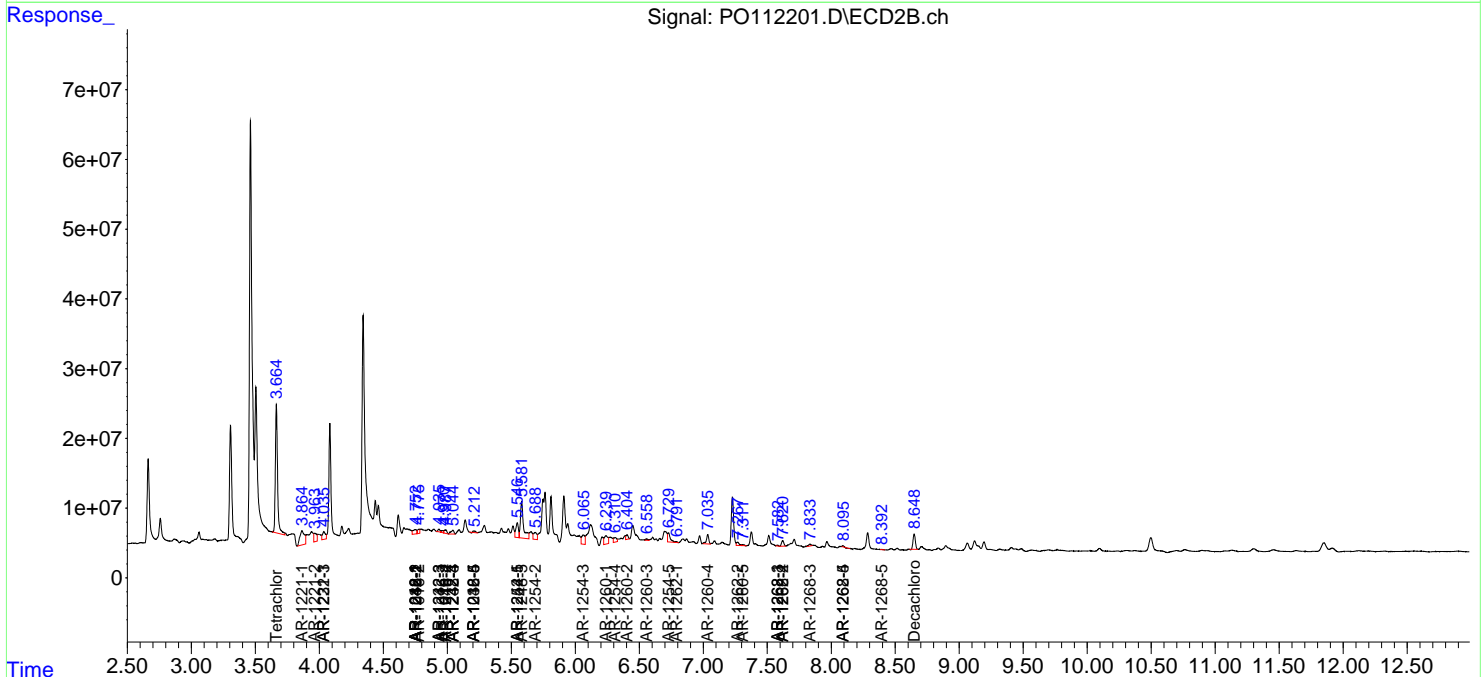
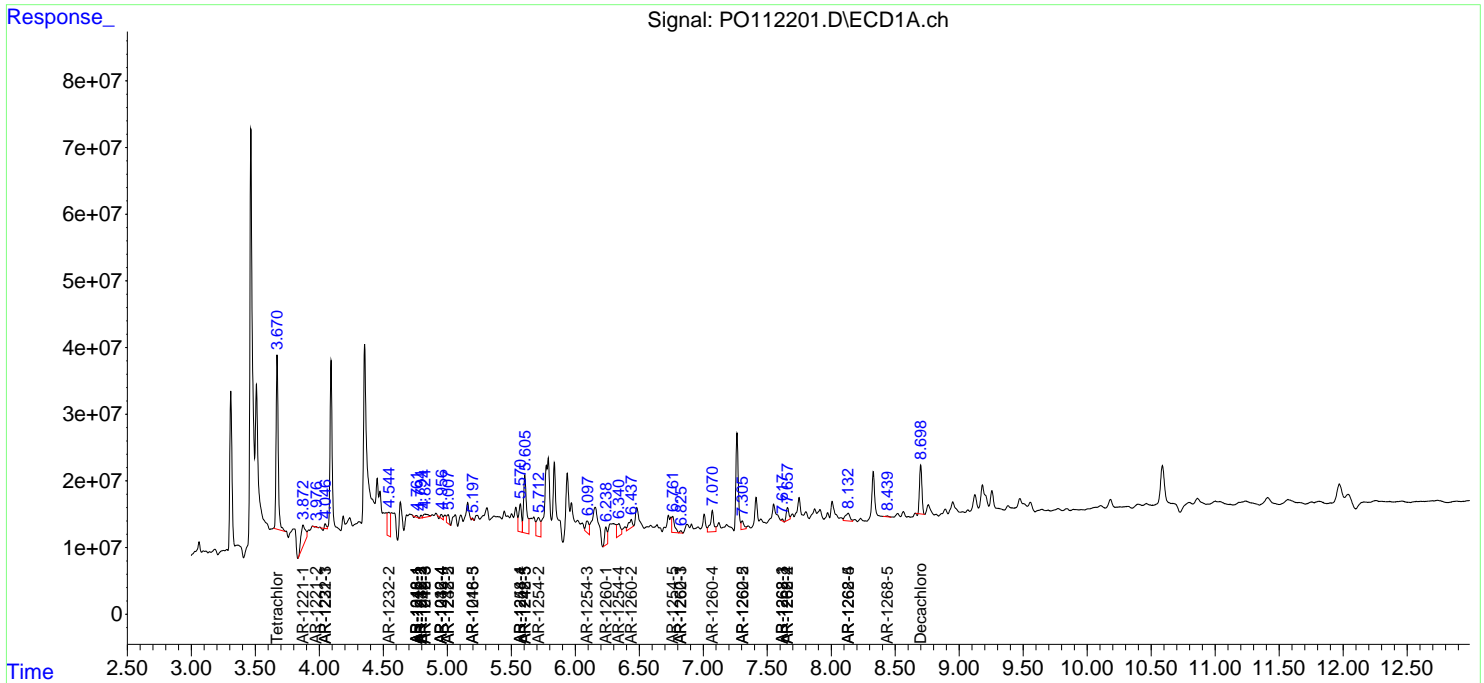
(f)=RT Delta > 1/2 Window (#)=Amounts differ by > 25% (m)=manual int.

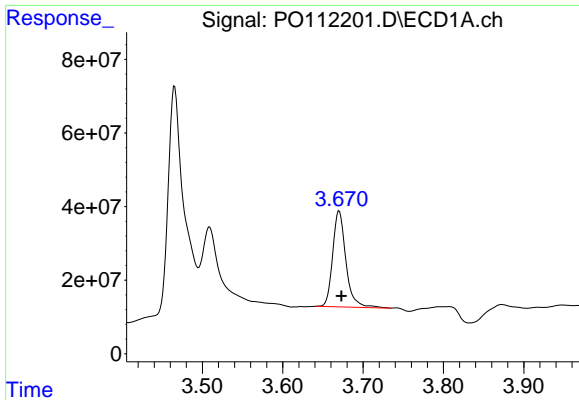
Data Path : Z:\pestpcbsrv\HPCHEM1\ECD\_O\Data\PO071025\  
 Data File : PO112201.D  
 Signal(s) : Signal #1: ECD1A.ch Signal #2: ECD2B.ch  
 Acq On : 10 Jul 2025 19:23  
 Operator : YP/AJ  
 Sample : Q2551-02  
 Misc :  
 ALS Vial : 17 Sample Multiplier: 1

Instrument :  
 ECD\_O  
 ClientSampleId :  
 VNJ-204

Integration File signal 1: autoint1.e  
 Integration File signal 2: autoint2.e  
 Quant Time: Jul 10 22:56:46 2025  
 Quant Method : Z:\pestpcbsrv\HPCHEM1\ECD\_O\methods\PO070825.M  
 Quant Title : GC EXTRACTABLES  
 QLast Update : Wed Jul 09 10:50:50 2025  
 Response via : Initial Calibration  
 Integrator: ChemStation

Volume Inj. : 2 µl  
 Signal #1 Phase : ZB-MR1 Signal #2 Phase: ZB-MR2  
 Signal #1 Info : 30Mx0.32mmx 0.50µ Signal #2 Info : 30M x 0.32mm x 0.25µm

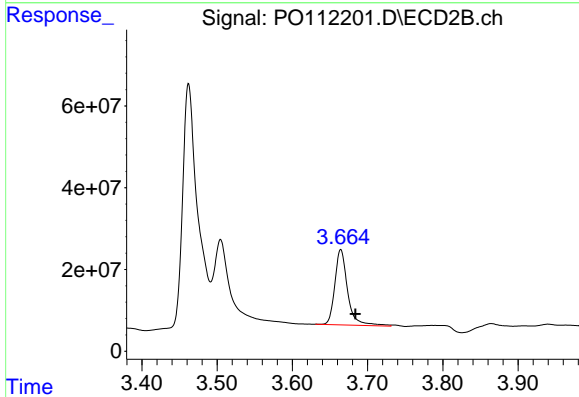




#1 Tetrachloro-m-xylene

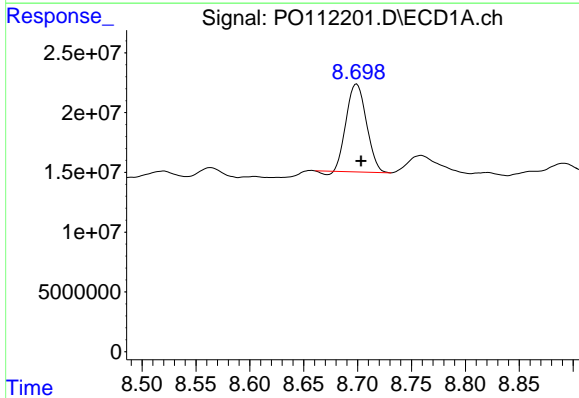
R.T.: 3.670 min  
 Delta R.T.: -0.003 min  
 Response: 298169767  
 Conc: 30.13 ng/ml

Instrument :  
 ECD\_O  
 ClientSampleId :  
 VNJ-204



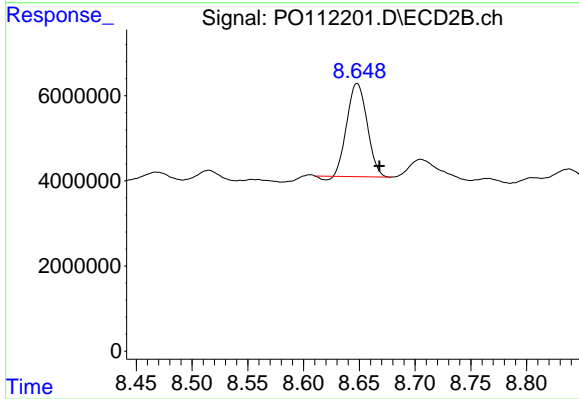
#1 Tetrachloro-m-xylene

R.T.: 3.664 min  
 Delta R.T.: -0.019 min  
 Response: 216890784  
 Conc: 34.04 ng/ml



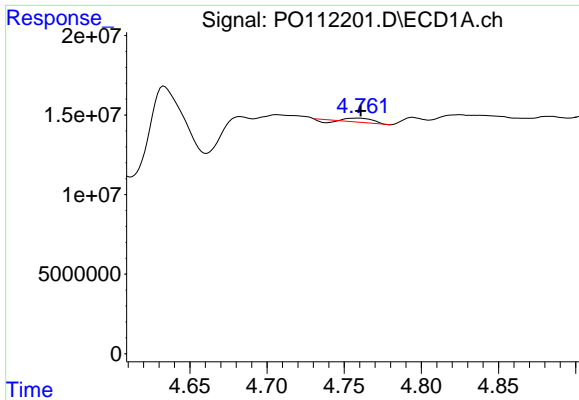
#2 Decachlorobiphenyl

R.T.: 8.699 min  
 Delta R.T.: -0.004 min  
 Response: 94878530  
 Conc: 13.88 ng/ml



#2 Decachlorobiphenyl

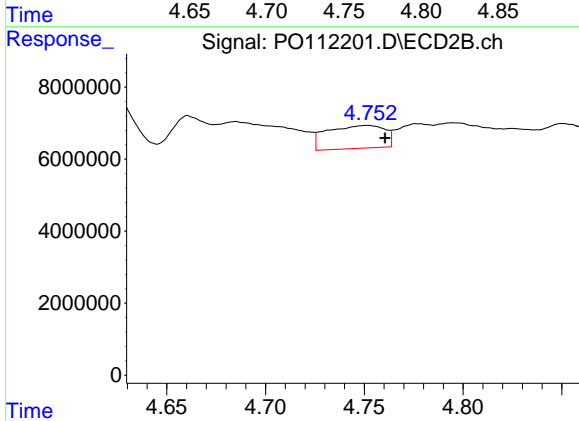
R.T.: 8.648 min  
 Delta R.T.: -0.020 min  
 Response: 27210546  
 Conc: 15.79 ng/ml



#3 AR-1016-1

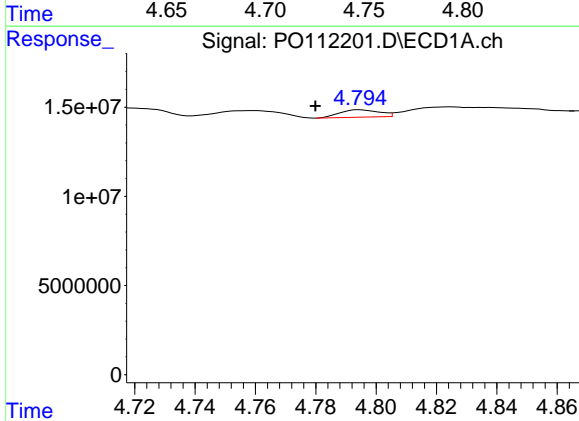
R.T.: 4.760 min  
 Delta R.T.: -0.001 min  
 Response: 2068197  
 Conc: 6.08 ng/ml

Instrument :  
 ECD\_O  
 ClientSampleId :  
 VNJ-204



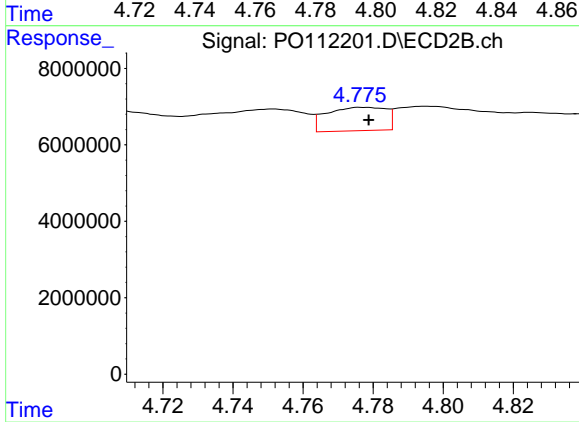
#3 AR-1016-1

R.T.: 4.751 min  
 Delta R.T.: -0.009 min  
 Response: 12952376  
 Conc: 58.13 ng/ml



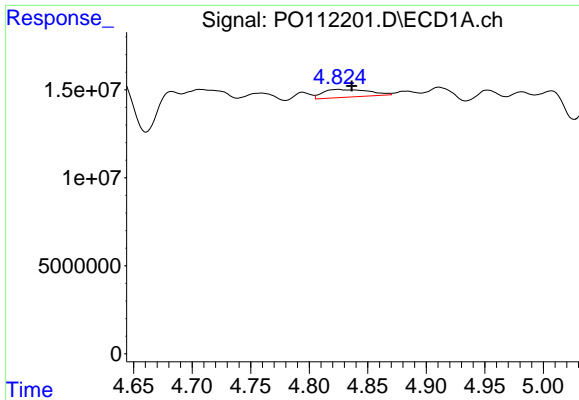
#4 AR-1016-2

R.T.: 4.795 min  
 Delta R.T.: 0.015 min  
 Response: 3719167  
 Conc: 7.48 ng/ml



#4 AR-1016-2

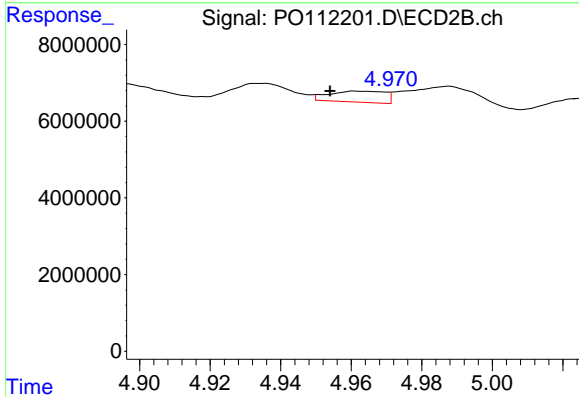
R.T.: 4.777 min  
 Delta R.T.: -0.002 min  
 Response: 7199921  
 Conc: 21.88 ng/ml



#5 AR-1016-3

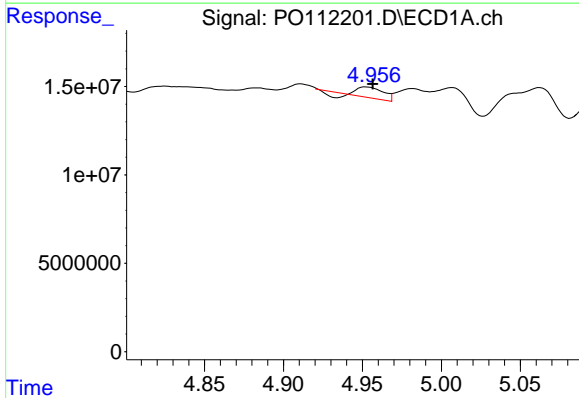
R.T.: 4.825 min  
 Delta R.T.: -0.011 min  
 Response: 12011468  
 Conc: 37.11 ng/ml

Instrument :  
 ECD\_O  
 ClientSampleId :  
 VNJ-204



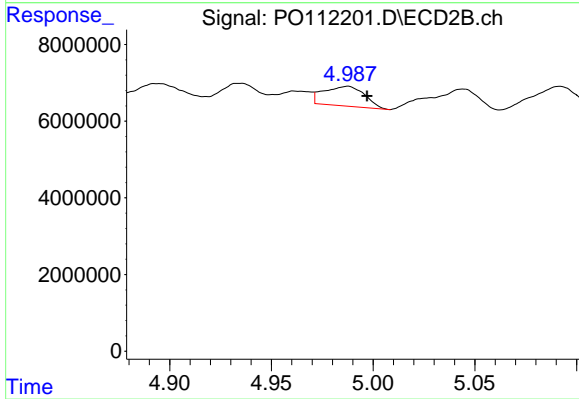
#5 AR-1016-3

R.T.: 4.962 min  
 Delta R.T.: 0.008 min  
 Response: 3186565  
 Conc: 18.76 ng/ml



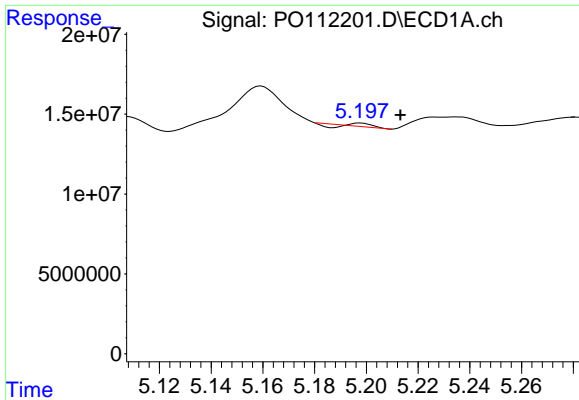
#6 AR-1016-4

R.T.: 4.952 min  
 Delta R.T.: -0.004 min  
 Response: 5766583  
 Conc: 22.46 ng/ml



#6 AR-1016-4

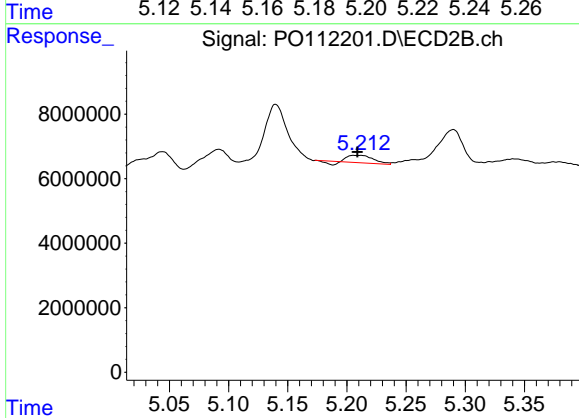
R.T.: 4.988 min  
 Delta R.T.: -0.009 min  
 Response: 7171518  
 Conc: 52.26 ng/ml



#7 AR-1016-5

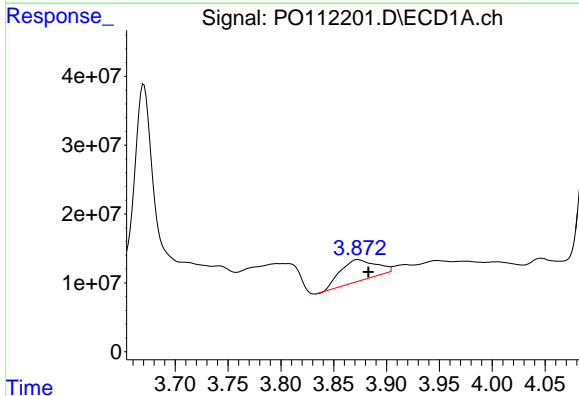
R.T.: 5.198 min  
 Delta R.T.: -0.015 min  
 Response: 244664  
 Conc: 0.89 ng/ml

Instrument : ECD\_O  
 ClientSampleId : VNJ-204



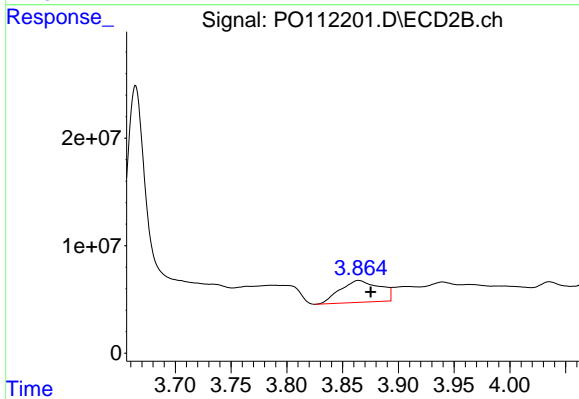
#7 AR-1016-5

R.T.: 5.211 min  
 Delta R.T.: 0.003 min  
 Response: 3063632  
 Conc: 17.77 ng/ml



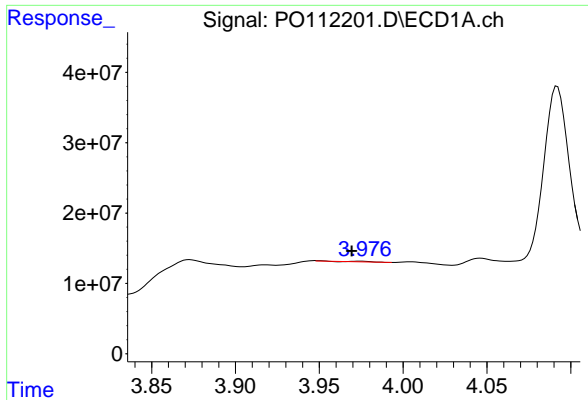
#8 AR-1221-1

R.T.: 3.873 min  
 Delta R.T.: -0.010 min  
 Response: 72587635  
 Conc: 622.46 ng/ml



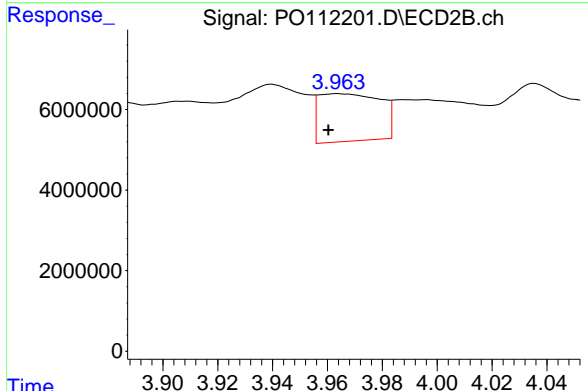
#8 AR-1221-1

R.T.: 3.864 min  
 Delta R.T.: -0.011 min  
 Response: 50330860  
 Conc: 611.59 ng/ml

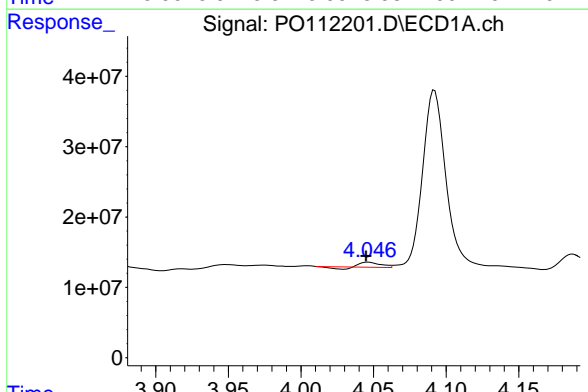


#9 AR-1221-2  
 R.T.: 3.975 min  
 Delta R.T.: 0.005 min  
 Response: 643908  
 Conc: 8.17 ng/ml

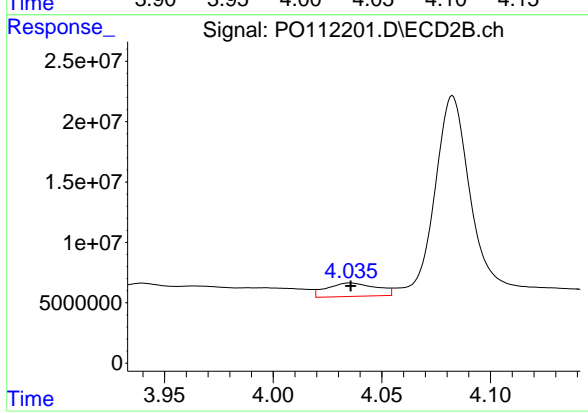
Instrument : ECD\_O  
 ClientSampleId : VNJ-204



#9 AR-1221-2  
 R.T.: 3.963 min  
 Delta R.T.: 0.003 min  
 Response: 18483680  
 Conc: 311.42 ng/ml

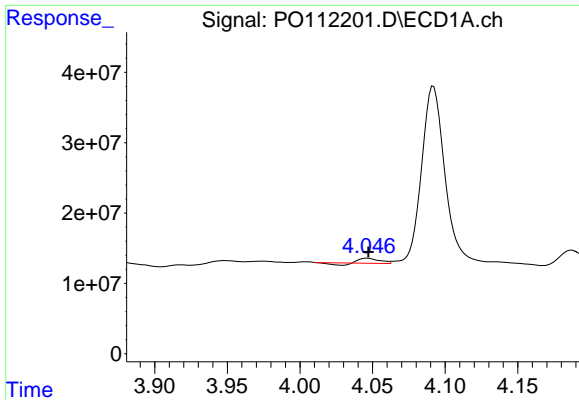


#10 AR-1221-3  
 R.T.: 4.046 min  
 Delta R.T.: 0.001 min  
 Response: 4917334  
 Conc: 18.24 ng/ml



#10 AR-1221-3  
 R.T.: 4.035 min  
 Delta R.T.: 0.000 min  
 Response: 17668284  
 Conc: 93.59 ng/ml

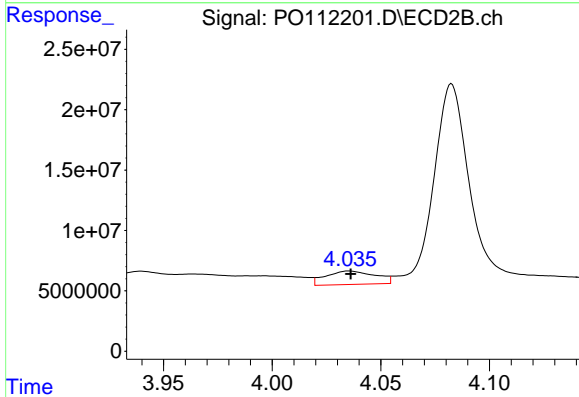




#11 AR-1232-1

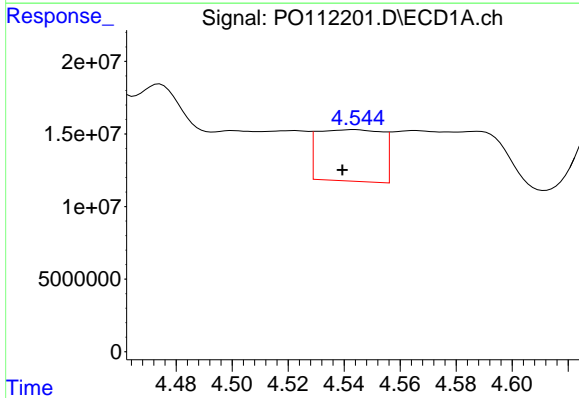
R.T.: 4.046 min  
 Delta R.T.: 0.000 min  
 Response: 4917334  
 Conc: 22.91 ng/ml

Instrument :  
 ECD\_O  
 ClientSampleId :  
 VNJ-204



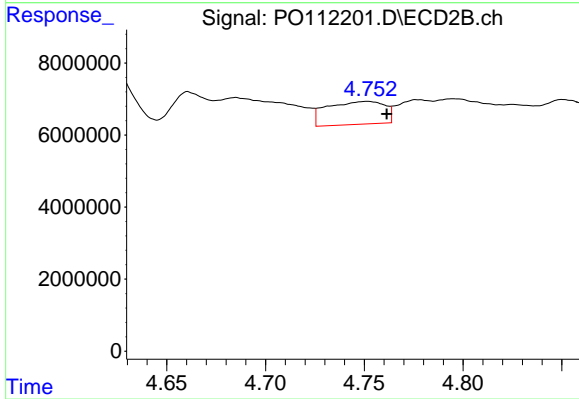
#11 AR-1232-1

R.T.: 4.035 min  
 Delta R.T.: 0.000 min  
 Response: 17668284  
 Conc: 117.71 ng/ml



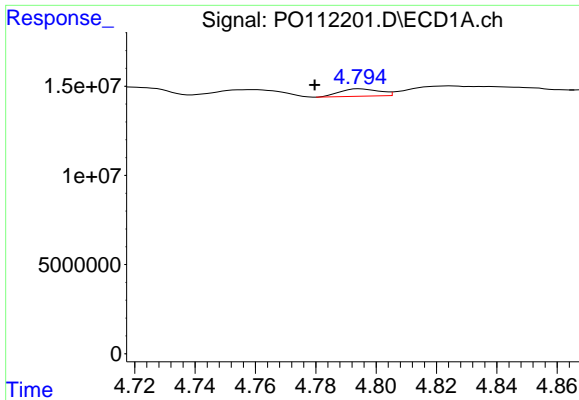
#12 AR-1232-2

R.T.: 4.544 min  
 Delta R.T.: 0.004 min  
 Response: 56737118  
 Conc: 499.28 ng/ml



#12 AR-1232-2

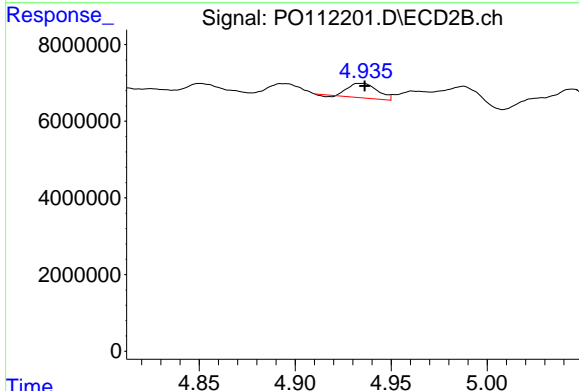
R.T.: 4.751 min  
 Delta R.T.: -0.010 min  
 Response: 12952376  
 Conc: 84.61 ng/ml



#13 AR-1232-3

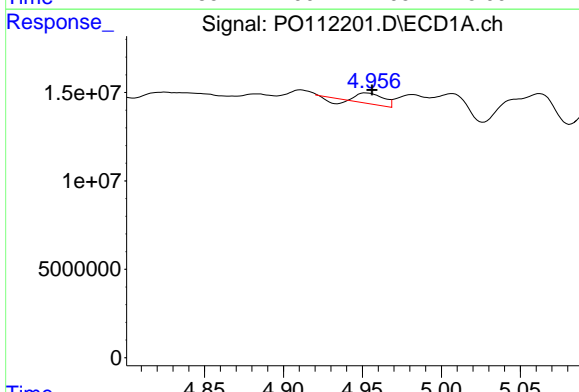
R.T.: 4.795 min  
 Delta R.T.: 0.015 min  
 Response: 3719167  
 Conc: 16.24 ng/ml

Instrument :  
 ECD\_O  
 ClientSampleId :  
 VNJ-204



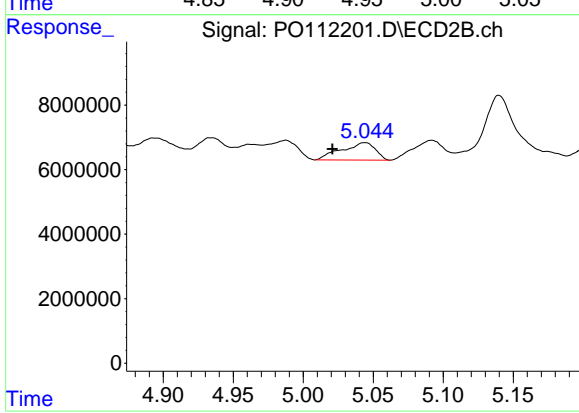
#13 AR-1232-3

R.T.: 4.934 min  
 Delta R.T.: -0.002 min  
 Response: 3928966  
 Conc: 52.04 ng/ml



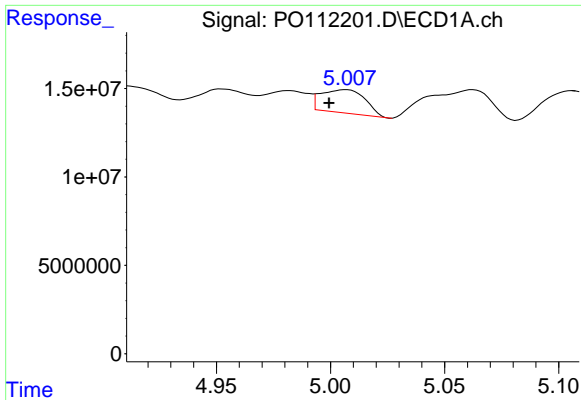
#14 AR-1232-4

R.T.: 4.952 min  
 Delta R.T.: -0.004 min  
 Response: 5766583  
 Conc: 50.45 ng/ml



#14 AR-1232-4

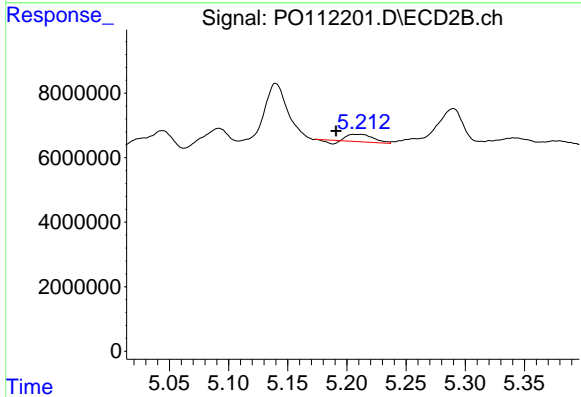
R.T.: 5.044 min  
 Delta R.T.: 0.023 min  
 Response: 9112467  
 Conc: 138.09 ng/ml



#15 AR-1232-5

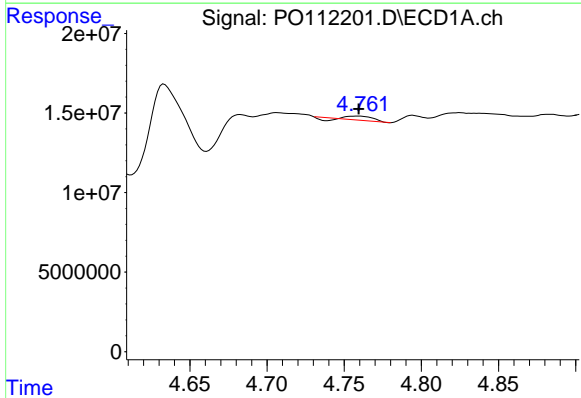
R.T.: 5.007 min  
 Delta R.T.: 0.008 min  
 Response: 17737089  
 Conc: 241.65 ng/ml

Instrument :  
 ECD\_O  
 ClientSampleId :  
 VNJ-204



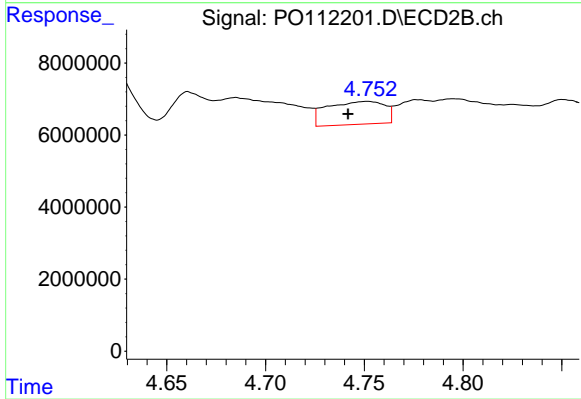
#15 AR-1232-5

R.T.: 5.211 min  
 Delta R.T.: 0.021 min  
 Response: 3063632  
 Conc: 41.26 ng/ml



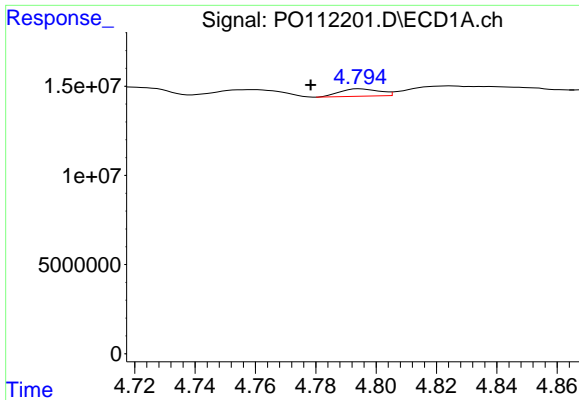
#16 AR-1242-1

R.T.: 4.760 min  
 Delta R.T.: 0.000 min  
 Response: 2068197  
 Conc: 7.14 ng/ml



#16 AR-1242-1

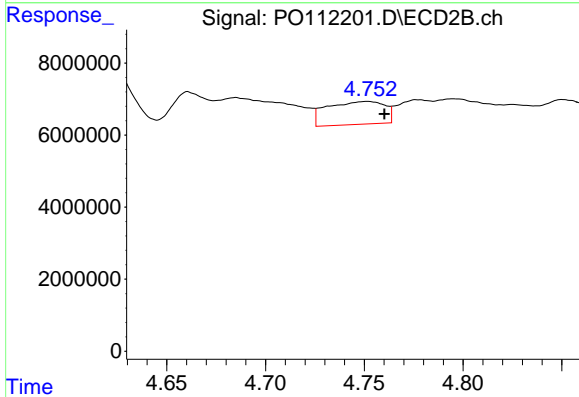
R.T.: 4.751 min  
 Delta R.T.: 0.009 min  
 Response: 12952376  
 Conc: 66.81 ng/ml



#17 AR-1242-2

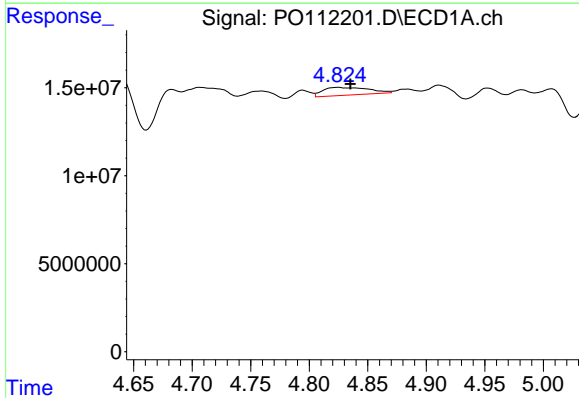
R.T.: 4.795 min  
 Delta R.T.: 0.016 min  
 Response: 3719167  
 Conc: 8.73 ng/ml

Instrument :  
 ECD\_O  
 ClientSampleId :  
 VNJ-204



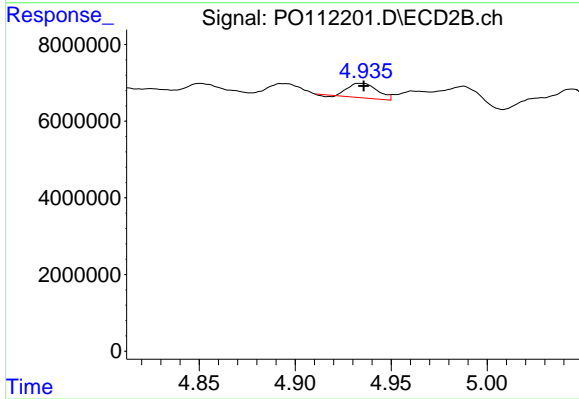
#17 AR-1242-2

R.T.: 4.751 min  
 Delta R.T.: -0.009 min  
 Response: 12952376  
 Conc: 45.71 ng/ml



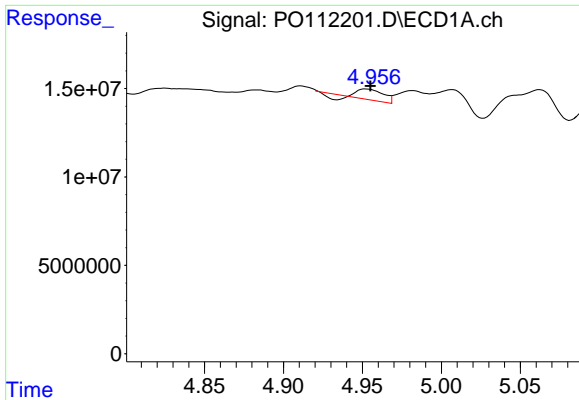
#18 AR-1242-3

R.T.: 4.825 min  
 Delta R.T.: -0.010 min  
 Response: 12011468  
 Conc: 43.89 ng/ml



#18 AR-1242-3

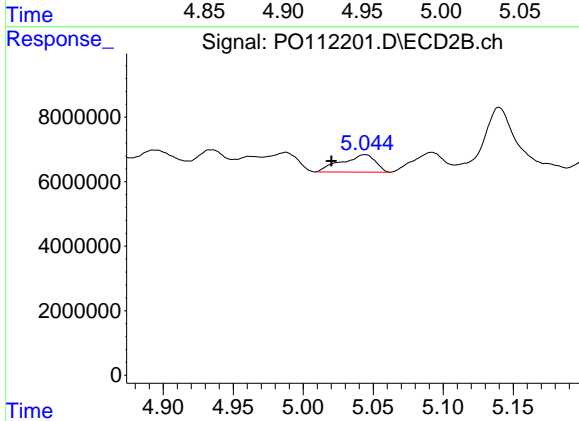
R.T.: 4.934 min  
 Delta R.T.: -0.001 min  
 Response: 3928966  
 Conc: 26.97 ng/ml



#19 AR-1242-4

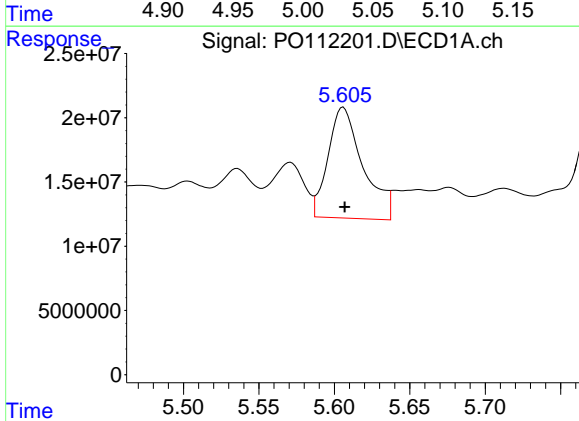
R.T.: 4.952 min  
 Delta R.T.: -0.003 min  
 Response: 5766583  
 Conc: 25.59 ng/ml

Instrument :  
 ECD\_O  
 ClientSampleId :  
 VNJ-204



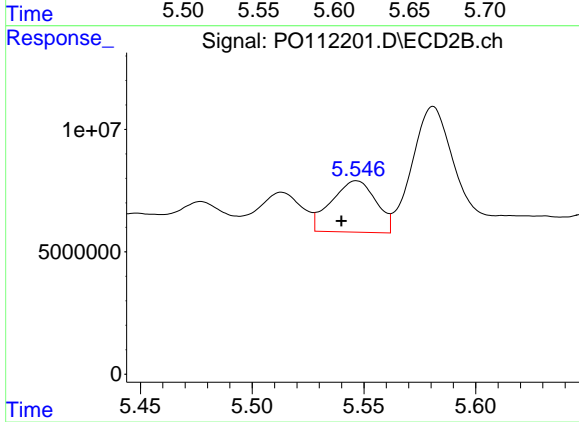
#19 AR-1242-4

R.T.: 5.044 min  
 Delta R.T.: 0.024 min  
 Response: 9112467  
 Conc: 64.24 ng/ml



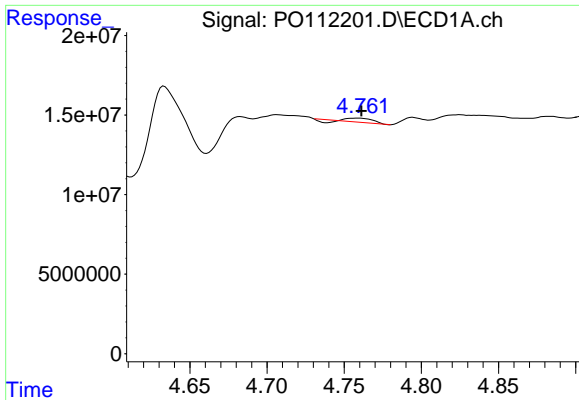
#20 AR-1242-5

R.T.: 5.606 min  
 Delta R.T.: 0.000 min  
 Response: 139215532  
 Conc: 657.70 ng/ml



#20 AR-1242-5

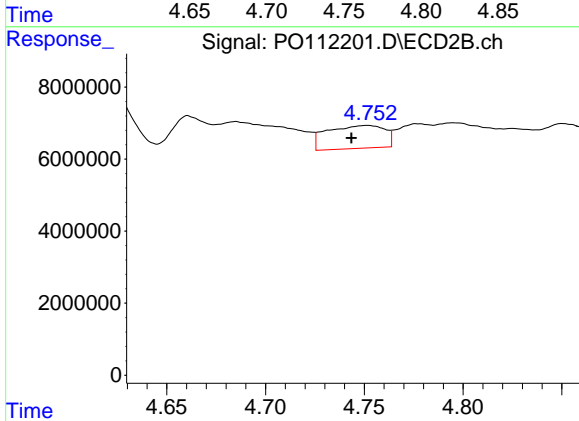
R.T.: 5.547 min  
 Delta R.T.: 0.007 min  
 Response: 29209681  
 Conc: 160.73 ng/ml



#21 AR-1248-1

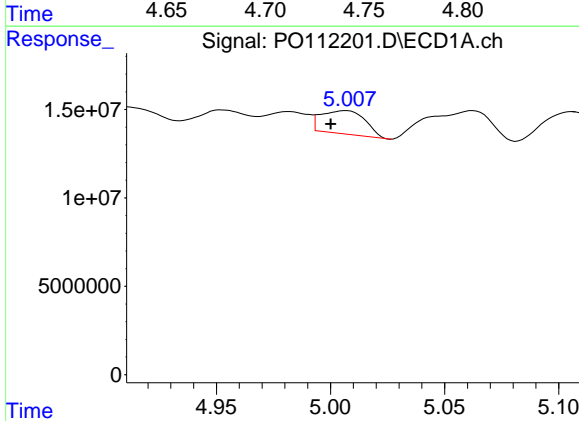
R.T.: 4.760 min  
 Delta R.T.: -0.002 min  
 Response: 2068197  
 Conc: 9.12 ng/ml

Instrument :  
 ECD\_O  
 ClientSampleId :  
 VNJ-204



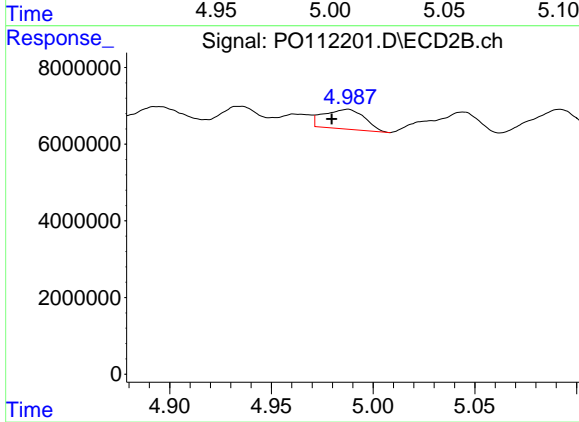
#21 AR-1248-1

R.T.: 4.751 min  
 Delta R.T.: 0.008 min  
 Response: 12952376  
 Conc: 83.91 ng/ml



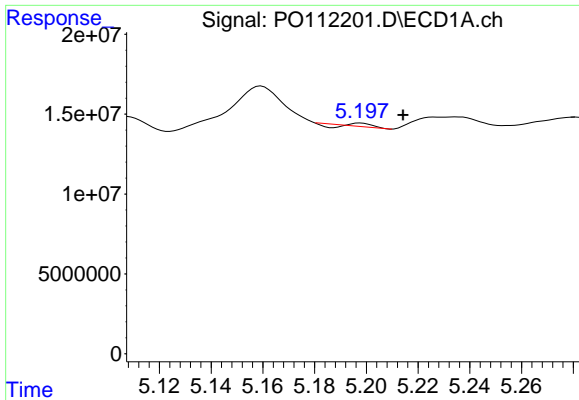
#22 AR-1248-2

R.T.: 5.007 min  
 Delta R.T.: 0.007 min  
 Response: 17737089  
 Conc: 57.53 ng/ml



#22 AR-1248-2

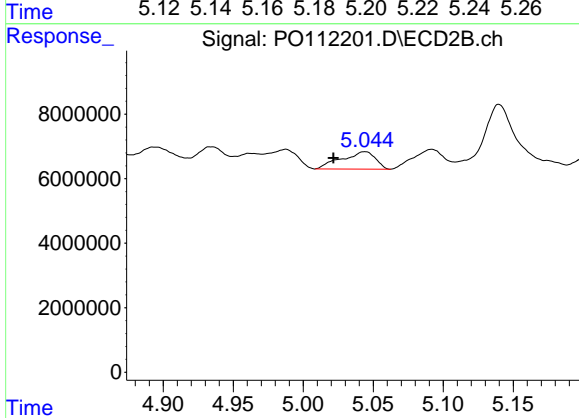
R.T.: 4.988 min  
 Delta R.T.: 0.008 min  
 Response: 7171518  
 Conc: 34.85 ng/ml



#23 AR-1248-3

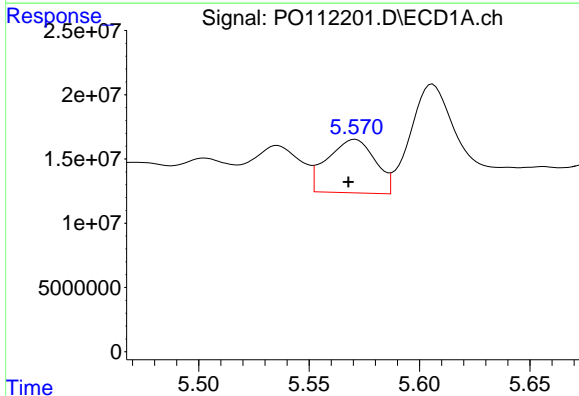
R.T.: 5.198 min  
 Delta R.T.: -0.016 min  
 Response: 244664  
 Conc: 0.60 ng/ml

Instrument :  
 ECD\_O  
 ClientSampleId :  
 VNJ-204



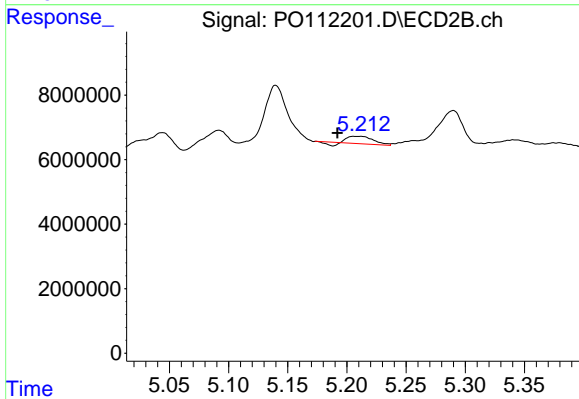
#23 AR-1248-3

R.T.: 5.044 min  
 Delta R.T.: 0.023 min  
 Response: 9112467  
 Conc: 42.42 ng/ml



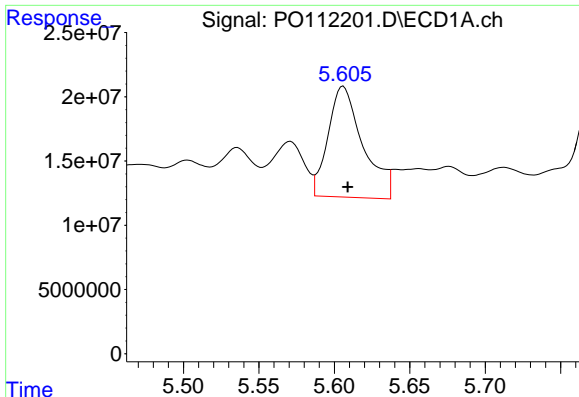
#24 AR-1248-4

R.T.: 5.571 min  
 Delta R.T.: 0.003 min  
 Response: 62703893  
 Conc: 108.64 ng/ml



#24 AR-1248-4

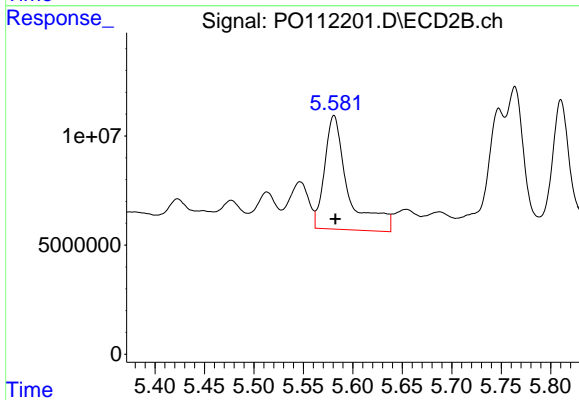
R.T.: 5.211 min  
 Delta R.T.: 0.019 min  
 Response: 3063632  
 Conc: 11.84 ng/ml



#25 AR-1248-5

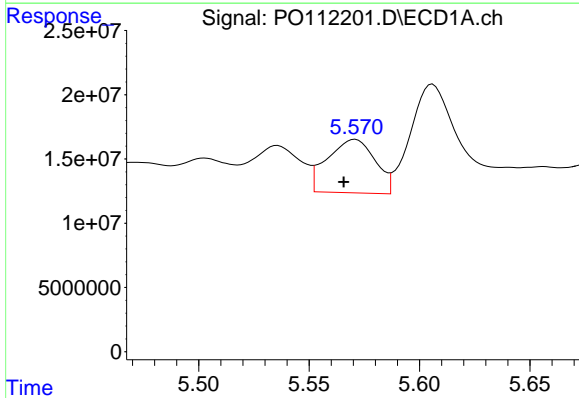
R.T.: 5.606 min  
 Delta R.T.: -0.003 min  
 Response: 139215532  
 Conc: 356.68 ng/ml

Instrument :  
 ECD\_O  
 ClientSampleId :  
 VNJ-204



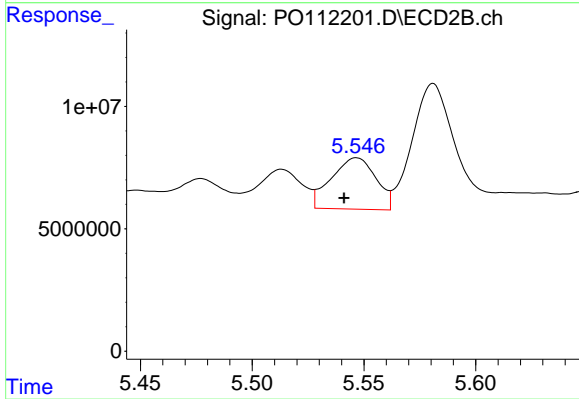
#25 AR-1248-5

R.T.: 5.581 min  
 Delta R.T.: -0.001 min  
 Response: 86511236  
 Conc: 345.29 ng/ml



#26 AR-1254-1

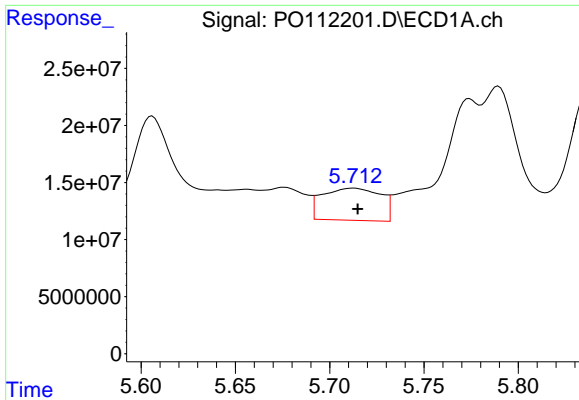
R.T.: 5.571 min  
 Delta R.T.: 0.005 min  
 Response: 62703893  
 Conc: 101.94 ng/ml



#26 AR-1254-1

R.T.: 5.547 min  
 Delta R.T.: 0.006 min  
 Response: 29209681  
 Conc: 76.63 ng/ml

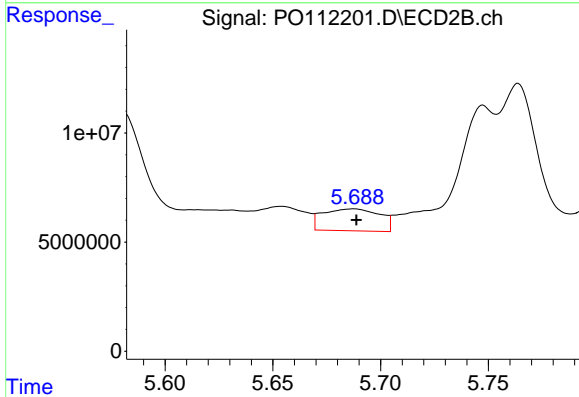




#27 AR-1254-2

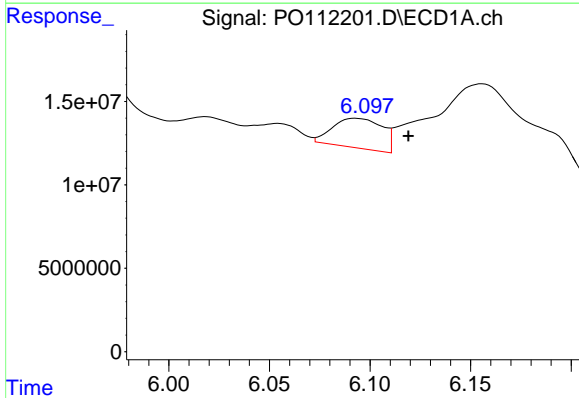
R.T.: 5.713 min  
 Delta R.T.: -0.002 min  
 Response: 60447833  
 Conc: 112.84 ng/ml

Instrument :  
 ECD\_O  
 ClientSampleId :  
 VNJ-204



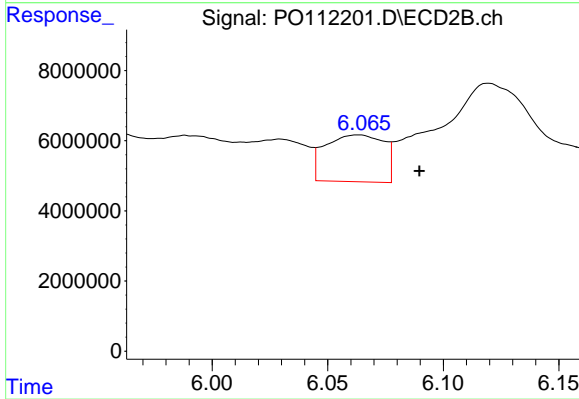
#27 AR-1254-2

R.T.: 5.688 min  
 Delta R.T.: -0.001 min  
 Response: 18485849  
 Conc: 55.71 ng/ml



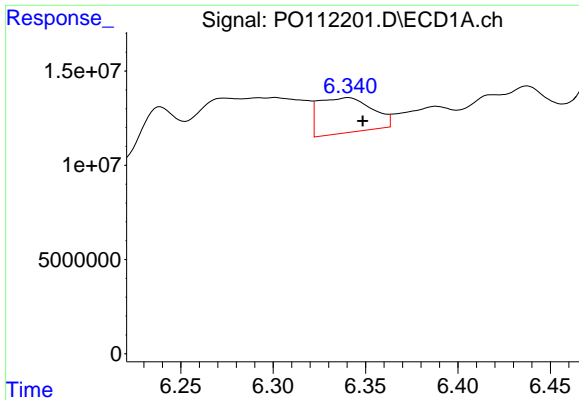
#28 AR-1254-3

R.T.: 6.093 min  
 Delta R.T.: -0.026 min  
 Response: 30583808  
 Conc: 36.43 ng/ml



#28 AR-1254-3

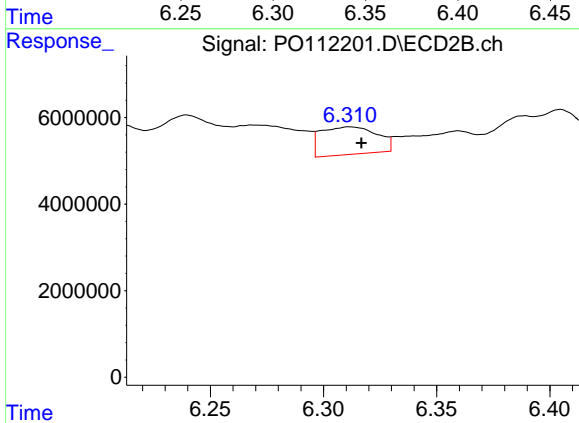
R.T.: 6.063 min  
 Delta R.T.: -0.026 min  
 Response: 23510993  
 Conc: 48.77 ng/ml



#29 AR-1254-4

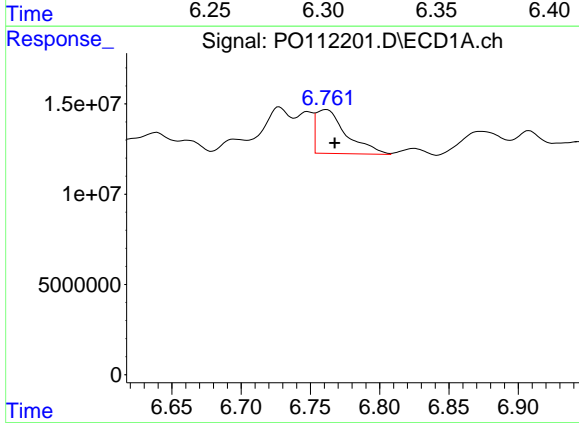
R.T.: 6.341 min  
 Delta R.T.: -0.008 min  
 Response: 37713387  
 Conc: 78.40 ng/ml

Instrument :  
 ECD\_O  
 ClientSampleId :  
 VNJ-204



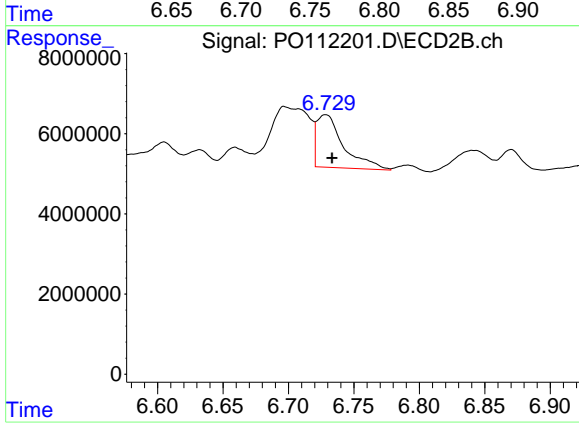
#29 AR-1254-4

R.T.: 6.312 min  
 Delta R.T.: -0.005 min  
 Response: 11017605  
 Conc: 42.26 ng/ml



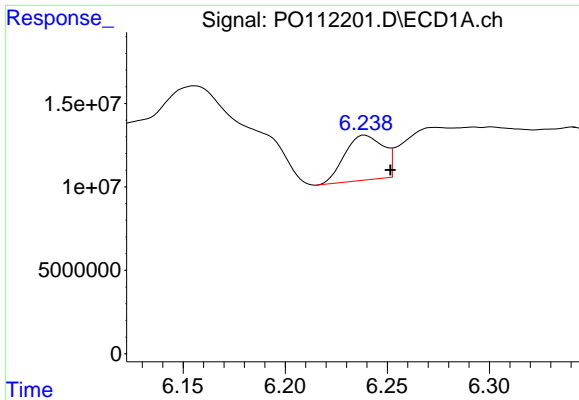
#30 AR-1254-5

R.T.: 6.762 min  
 Delta R.T.: -0.006 min  
 Response: 36930904  
 Conc: 47.72 ng/ml



#30 AR-1254-5

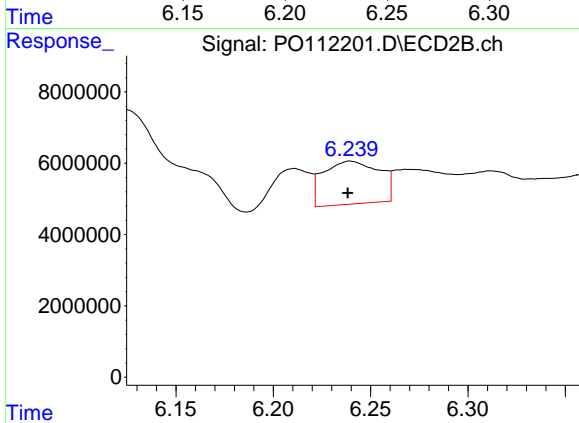
R.T.: 6.729 min  
 Delta R.T.: -0.005 min  
 Response: 18761972  
 Conc: 52.65 ng/ml



#31 AR-1260-1

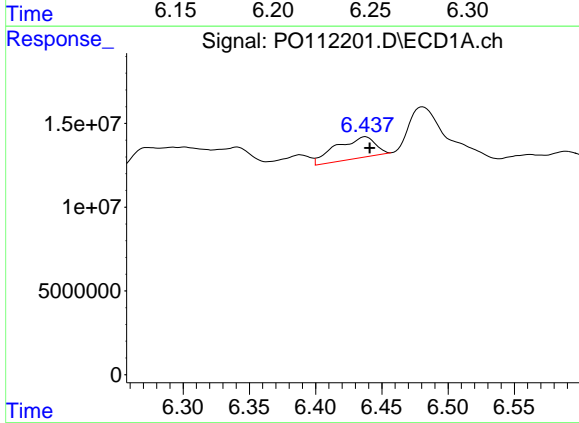
R.T.: 6.239 min  
 Delta R.T.: -0.012 min  
 Response: 35283656  
 Conc: 70.39 ng/ml

Instrument :  
 ECD\_O  
 ClientSampleId :  
 VNJ-204



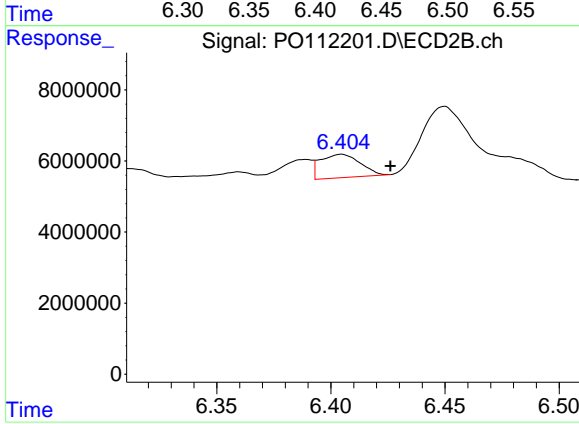
#31 AR-1260-1

R.T.: 6.240 min  
 Delta R.T.: 0.001 min  
 Response: 24006520  
 Conc: 85.57 ng/ml



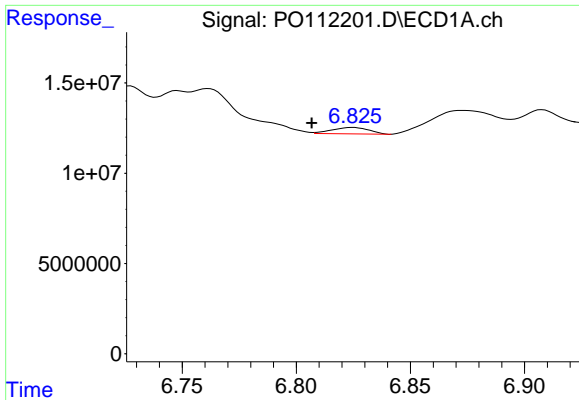
#32 AR-1260-2

R.T.: 6.438 min  
 Delta R.T.: -0.003 min  
 Response: 26162188  
 Conc: 35.44 ng/ml



#32 AR-1260-2

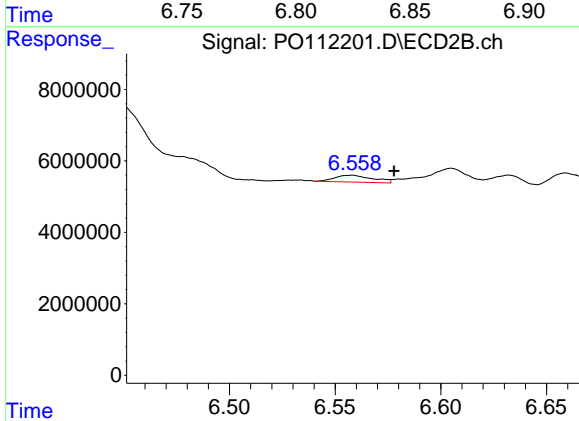
R.T.: 6.405 min  
 Delta R.T.: -0.021 min  
 Response: 7993375  
 Conc: 23.51 ng/ml



#33 AR-1260-3

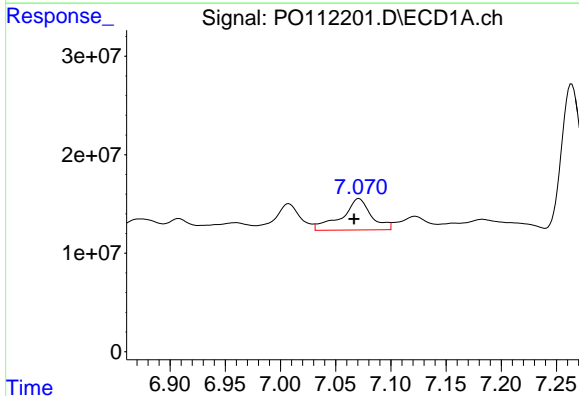
R.T.: 6.825 min  
 Delta R.T.: 0.018 min  
 Response: 4015499  
 Conc: 6.13 ng/ml

Instrument :  
 ECD\_O  
 ClientSampleId :  
 VNJ-204



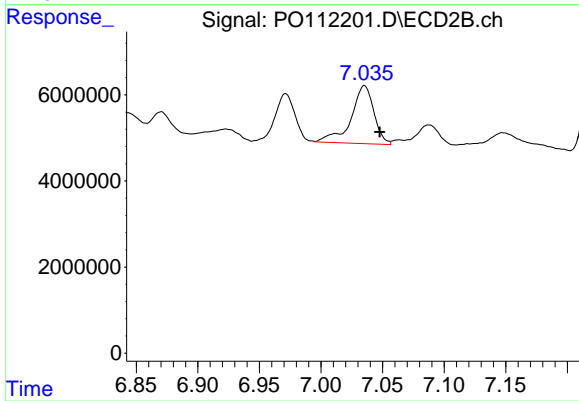
#33 AR-1260-3

R.T.: 6.558 min  
 Delta R.T.: -0.020 min  
 Response: 2404790  
 Conc: 8.73 ng/ml



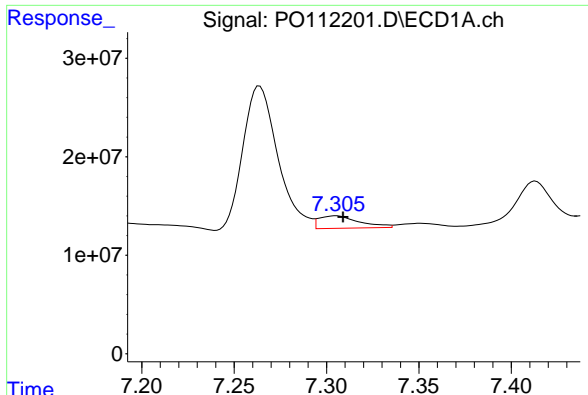
#34 AR-1260-4

R.T.: 7.071 min  
 Delta R.T.: 0.004 min  
 Response: 58959743  
 Conc: 135.46 ng/ml



#34 AR-1260-4

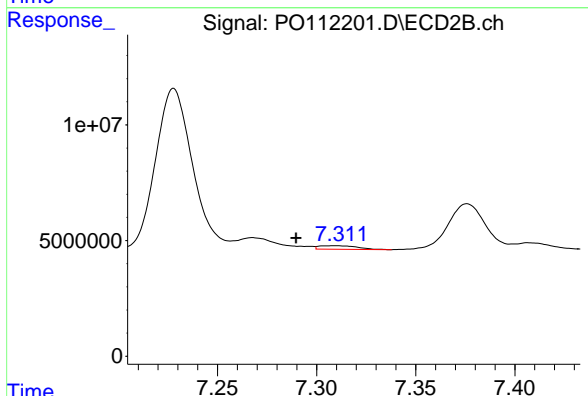
R.T.: 7.035 min  
 Delta R.T.: -0.012 min  
 Response: 17442035  
 Conc: 86.93 ng/ml



#35 AR-1260-5

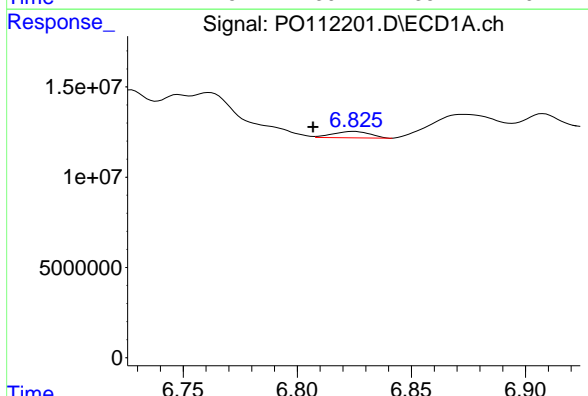
R.T.: 7.305 min  
 Delta R.T.: -0.004 min  
 Response: 19081498  
 Conc: 15.11 ng/ml

Instrument :  
 ECD\_O  
 ClientSampleId :  
 VNJ-204



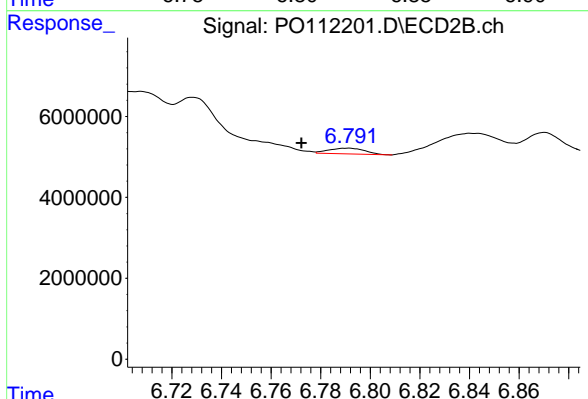
#35 AR-1260-5

R.T.: 7.309 min  
 Delta R.T.: 0.020 min  
 Response: 2048985  
 Conc: 4.58 ng/ml



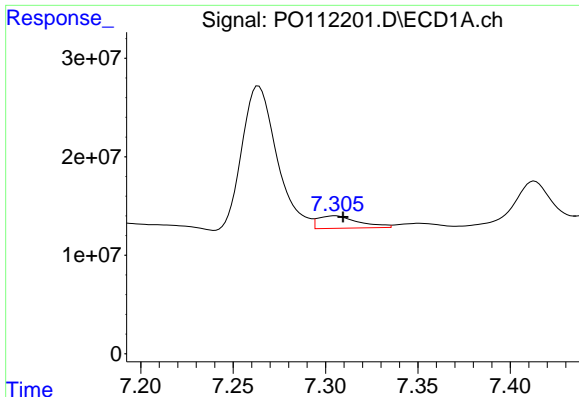
#36 AR-1262-1

R.T.: 6.825 min  
 Delta R.T.: 0.018 min  
 Response: 4015499  
 Conc: 3.93 ng/ml



#36 AR-1262-1

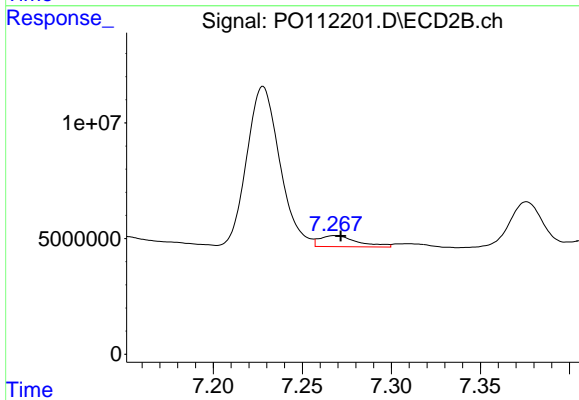
R.T.: 6.791 min  
 Delta R.T.: 0.019 min  
 Response: 1444366  
 Conc: 3.55 ng/ml



#37 AR-1262-2

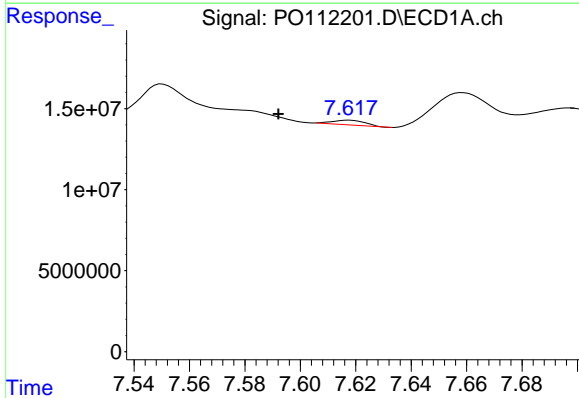
R.T.: 7.305 min  
 Delta R.T.: -0.005 min  
 Response: 19081498  
 Conc: 11.64 ng/ml

Instrument :  
 ECD\_O  
 ClientSampleId :  
 VNJ-204



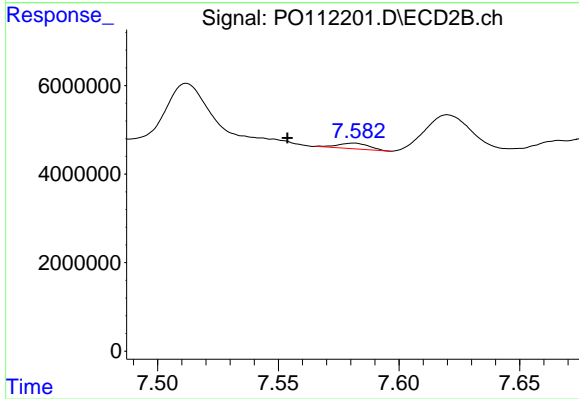
#37 AR-1262-2

R.T.: 7.268 min  
 Delta R.T.: -0.004 min  
 Response: 6945265  
 Conc: 13.55 ng/ml



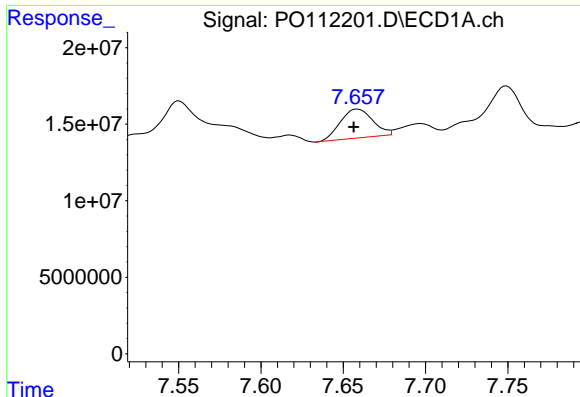
#38 AR-1262-3

R.T.: 7.617 min  
 Delta R.T.: 0.025 min  
 Response: 2411689  
 Conc: 3.76 ng/ml



#38 AR-1262-3

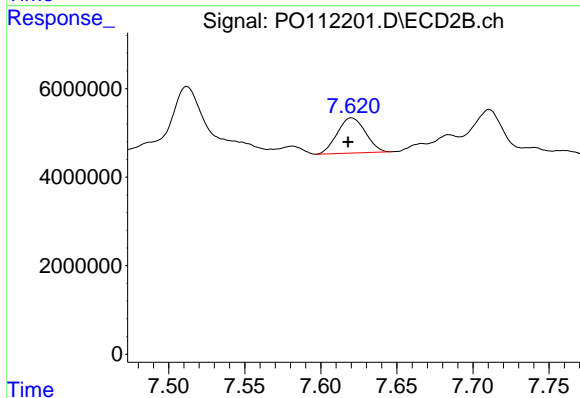
R.T.: 7.581 min  
 Delta R.T.: 0.027 min  
 Response: 1145269  
 Conc: 6.38 ng/ml



#39 AR-1262-4

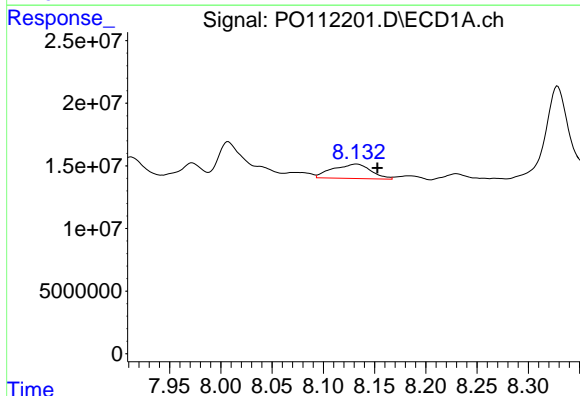
R.T.: 7.659 min  
 Delta R.T.: 0.002 min  
 Response: 25958970  
 Conc: 24.23 ng/ml

Instrument :  
 ECD\_O  
 ClientSampleId :  
 VNJ-204



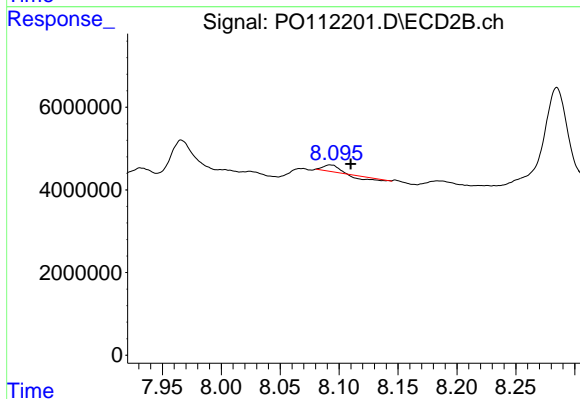
#39 AR-1262-4

R.T.: 7.620 min  
 Delta R.T.: 0.002 min  
 Response: 10244063  
 Conc: 35.21 ng/ml



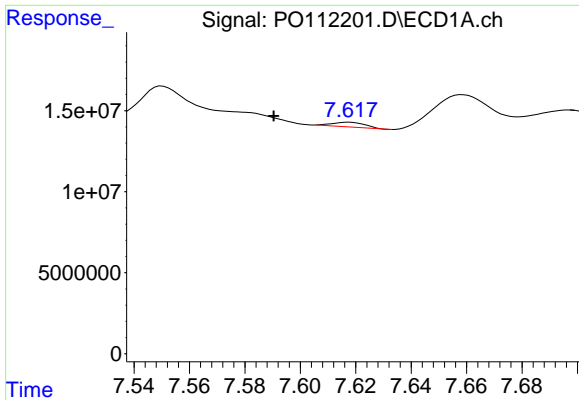
#40 AR-1262-5

R.T.: 8.132 min  
 Delta R.T.: -0.021 min  
 Response: 29797373  
 Conc: 66.49 ng/ml



#40 AR-1262-5

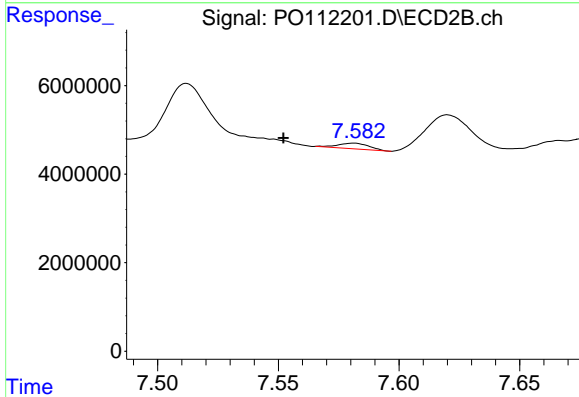
R.T.: 8.093 min  
 Delta R.T.: -0.017 min  
 Response: 538958  
 Conc: 5.09 ng/ml



#41 AR-1268-1

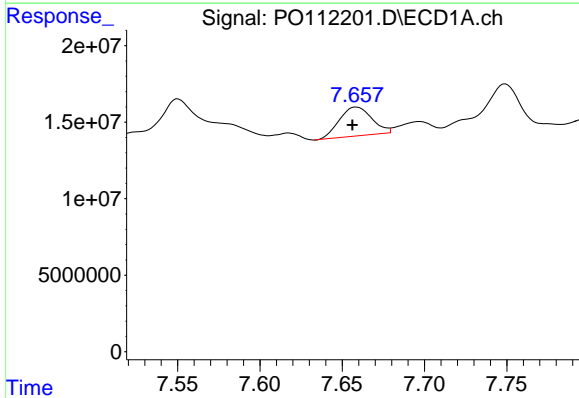
R.T.: 7.617 min  
 Delta R.T.: 0.027 min  
 Response: 2411689  
 Conc: 1.31 ng/ml

Instrument :  
 ECD\_O  
 ClientSampleId :  
 VNJ-204



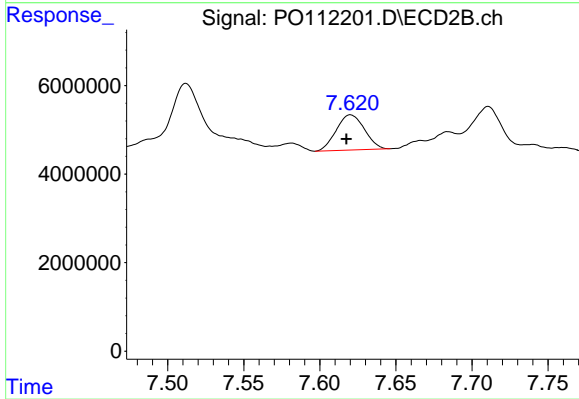
#41 AR-1268-1

R.T.: 7.581 min  
 Delta R.T.: 0.029 min  
 Response: 1145269  
 Conc: 2.33 ng/ml



#42 AR-1268-2

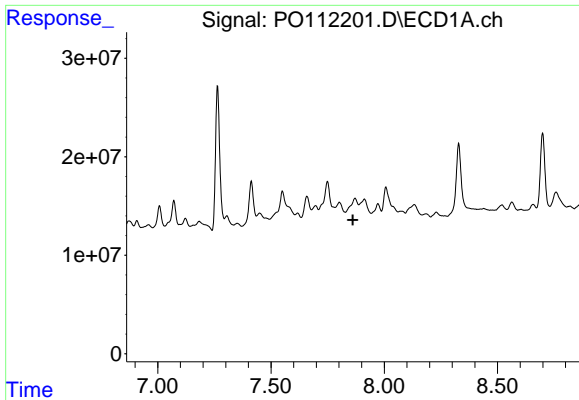
R.T.: 7.659 min  
 Delta R.T.: 0.003 min  
 Response: 25958970  
 Conc: 16.67 ng/ml



#42 AR-1268-2

R.T.: 7.620 min  
 Delta R.T.: 0.003 min  
 Response: 10244063  
 Conc: 24.56 ng/ml

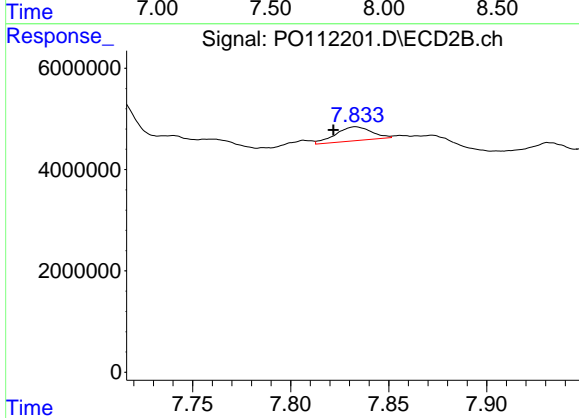




#43 AR-1268-3

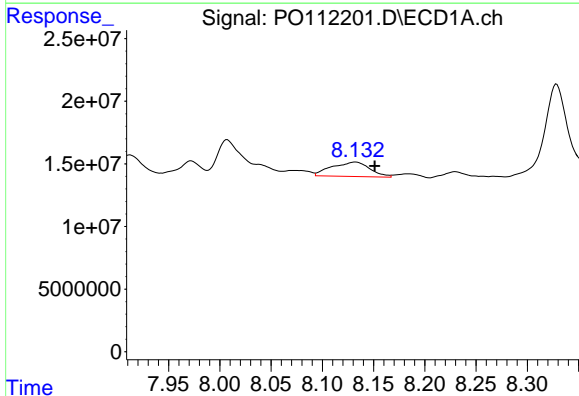
R.T.: 7.871 min  
 Delta R.T.: 0.009 min  
 Response: -2567788  
 Conc: N.D.

Instrument :  
 ECD\_O  
 ClientSampleId :  
 VNJ-204



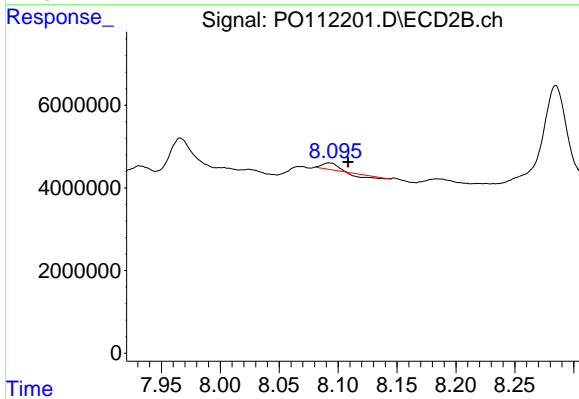
#43 AR-1268-3

R.T.: 7.833 min  
 Delta R.T.: 0.011 min  
 Response: 3485993  
 Conc: 11.02 ng/ml



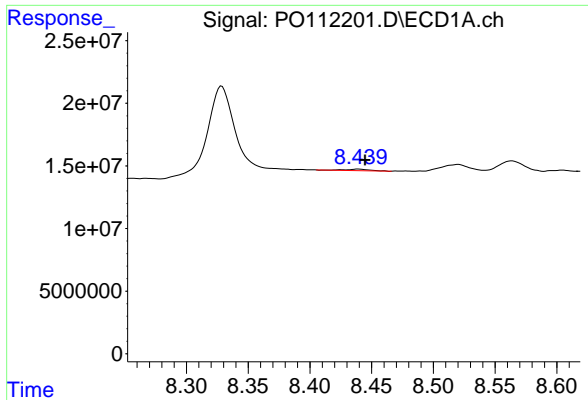
#44 AR-1268-4

R.T.: 8.132 min  
 Delta R.T.: -0.019 min  
 Response: 29797373  
 Conc: 62.03 ng/ml



#44 AR-1268-4

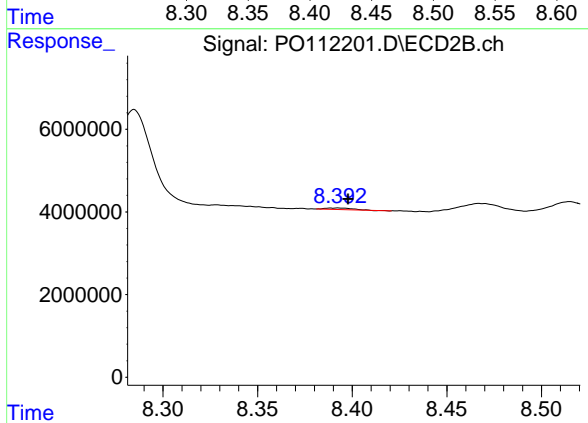
R.T.: 8.093 min  
 Delta R.T.: -0.016 min  
 Response: 538958  
 Conc: 4.83 ng/ml



#45 AR-1268-5

R.T.: 8.439 min  
 Delta R.T.: -0.005 min  
 Response: 1551364  
 Conc: 0.48 ng/ml

Instrument :  
 ECD\_O  
 ClientSampleId :  
 VNJ-204



#45 AR-1268-5

R.T.: 8.393 min  
 Delta R.T.: -0.005 min  
 Response: 393896  
 Conc: 0.54 ng/ml