

Data Path : Z:\pestpcbsrv\HPCHEM1\ECD_0\Data\P0071025\
 Data File : PO112202.D
 Signal(s) : Signal #1: ECD1A.ch Signal #2: ECD2B.ch
 Acq On : 10 Jul 2025 20:32
 Operator : YP/AJ
 Sample : AR1660CCC500
 Misc :
 ALS Vial : 3 Sample Multiplier: 1

Instrument :
 ECD_0
 ClientSampleId :
 AR1660CCC500

Integration File signal 1: autoint1.e
 Integration File signal 2: autoint2.e
 Quant Time: Jul 10 22:57:18 2025
 Quant Method : Z:\pestpcbsrv\HPCHEM1\ECD_0\methods\P0070825.M
 Quant Title : GC EXTRACTABLES
 QLast Update : Wed Jul 09 10:50:50 2025
 Response via : Initial Calibration
 Integrator: ChemStation

Volume Inj. : 2 µl
 Signal #1 Phase : ZB-MR2 Signal #2 Phase: ZB-MR2
 Signal #1 Info : 30Mx0.32mmx 0.50µ Signal #2 Info : 30M x 0.32mm x 0.25µm

Compound	RT#1	RT#2	Resp#1	Resp#2	ng/ml	ng/ml
System Monitoring Compounds						
1) SA Tetrachlo...	3.670	3.665	530.8E6	327.4E6	53.648	51.391
2) SA Decachlor...	8.699	8.647	299.1E6	82521445	43.748	47.881
Target Compounds						
3) L1 AR-1016-1	4.757	4.759	175.9E6	160.6E6	517.097	720.746 #
4) L1 AR-1016-2	4.776	4.790	259.6E6	11039683	522.103	33.545 #
5) L1 AR-1016-3	4.833	4.934	178.6E6	82974752	551.608	488.469
6) L1 AR-1016-4	4.952	4.976	133.6E6	64261363	520.189	468.283
7) L1 AR-1016-5	5.209	5.228	164.5E6	38717640	601.160	224.515 #
8) L2 AR-1221-1	3.881	3.873	18248702	11327753	156.488	137.648
9) L2 AR-1221-2	3.969	3.960	23091783	16101359	292.892	271.279
10) L2 AR-1221-3	4.044	4.034	89083586	60858005	330.451	322.381
11) L3 AR-1232-1	4.044	4.034	89083586	60858005	414.984	405.451
12) L3 AR-1232-2	4.536	4.759	127.9E6	160.6E6	1125.669	1049.131
13) L3 AR-1232-3	4.776	4.934	259.6E6	82974752	1133.745	1098.916
14) L3 AR-1232-4	4.952	5.018	133.6E6	79448863	1168.752	1203.986
15) L3 AR-1232-5	4.996	5.189	95343852	93778323	1298.958	1262.839
16) L4 AR-1242-1	4.757	4.740	175.9E6	110.3E6	607.231	569.162
17) L4 AR-1242-2	4.776	4.759	259.6E6	160.6E6	609.593	566.810
18) L4 AR-1242-3	4.833	4.934	178.6E6	82974752	652.440	569.579
19) L4 AR-1242-4	4.952	5.018	133.6E6	79448863	592.870	560.127
20) L4 AR-1242-5	5.603	5.538	48060102	92433857	227.051	508.621 #
21) L5 AR-1248-1	4.757	4.740	175.9E6	110.3E6	775.129	714.764
22) L5 AR-1248-2	4.996	4.976	95343852	64261363	309.231	312.301
23) L5 AR-1248-3	5.209	5.018	164.5E6	79448863	403.895	369.876
24) L5 AR-1248-4	5.563	5.189	158.6E6	93778323	274.797	362.461 #
25) L5 AR-1248-5	5.603	5.579	48060102	28357060	123.135	113.179
26) L6 AR-1254-1	5.563	5.538	158.6E6	92433857	257.836	242.501
27) L6 AR-1254-2	5.712	5.687	118.2E6	68476807	220.588	206.373
28) L6 AR-1254-3	6.132	6.103	232.3E6	112.0E6	276.657	232.434
29) L6 AR-1254-4	6.345	6.315	30105934	16979469	62.588	65.132
30) L6 AR-1254-5	6.764	6.730	332.1E6	156.0E6	429.113	437.754
31) L7 AR-1260-1	6.247	6.217	249.0E6	140.4E6	496.856	500.592
32) L7 AR-1260-2	6.437	6.405	373.1E6	171.8E6	505.469	505.240
33) L7 AR-1260-3	6.803	6.557	320.9E6	117.6E6	489.593	426.641
34) L7 AR-1260-4	7.063	7.063	201.9E6	11856732	463.867	59.093 #
35) L7 AR-1260-5	7.306	7.269	586.0E6	213.6E6	464.143	477.046
36) L8 AR-1262-1	6.803	6.769	320.9E6	140.5E6	314.107	344.921
37) L8 AR-1262-2	7.306	7.269	586.0E6	213.6E6	357.452	416.715
38) L8 AR-1262-3	7.590	7.551	145.0E6	48611180	225.920	270.778
39) L8 AR-1262-4	7.653	7.614	390.7E6	118.8E6	364.627	408.215
40) L8 AR-1262-5	8.150	8.108	131.9E6	33596075	294.397	317.593
41) L9 AR-1268-1	7.590	7.551	145.0E6	48611180	78.933	98.913 #

Data Path : Z:\pestpcbsrv\HPCHEM1\ECD_0\Data\P0071025\
 Data File : P0112202.D
 Signal(s) : Signal #1: ECD1A.ch Signal #2: ECD2B.ch
 Acq On : 10 Jul 2025 20:32
 Operator : YP/AJ
 Sample : AR1660CCC500
 Misc :
 ALS Vial : 3 Sample Multiplier: 1

Instrument :
 ECD_0
 ClientSampleId :
 AR1660CCC500

Integration File signal 1: autoint1.e
 Integration File signal 2: autoint2.e
 Quant Time: Jul 10 22:57:18 2025
 Quant Method : Z:\pestpcbsrv\HPCHEM1\ECD_0\methods\P0070825.M
 Quant Title : GC EXTRACTABLES
 QLast Update : Wed Jul 09 10:50:50 2025
 Response via : Initial Calibration
 Integrator: ChemStation

Volume Inj. : 2 µl
 Signal #1 Phase : ZB-MR1 Signal #2 Phase: ZB-MR2
 Signal #1 Info : 30Mx0.32mmx 0.50µ Signal #2 Info : 30M x 0.32mm x 0.25µm

	Compound	RT#1	RT#2	Resp#1	Resp#2	ng/ml	ng/ml
42)	L9 AR-1268-2	7.653	7.614	390.7E6	118.8E6	250.817	284.664
43)	L9 AR-1268-3	7.860	7.819	6570931	1887892	5.056	5.967
44)	L9 AR-1268-4	8.150	8.108	131.9E6	33596075	274.623	301.278
45)	L9 AR-1268-5	8.444	8.396	28292165	8385974	8.669	11.543 #

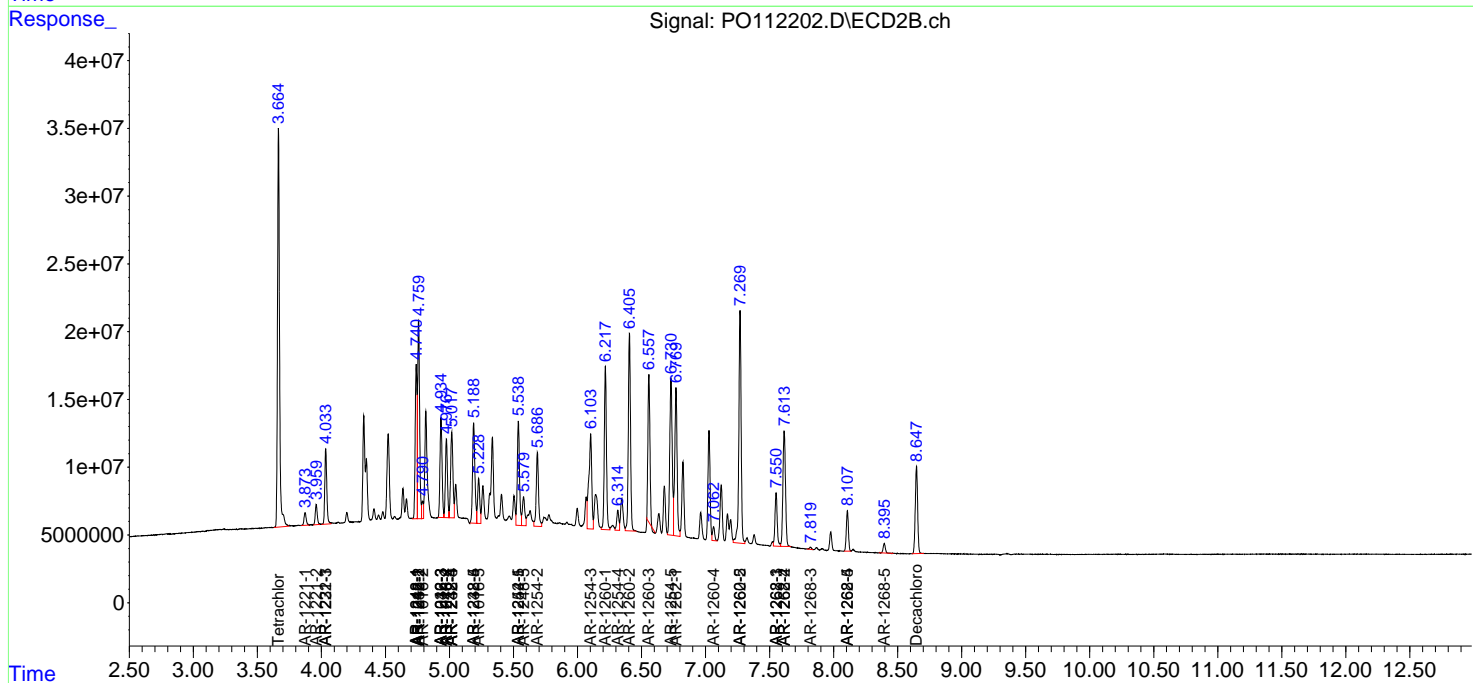
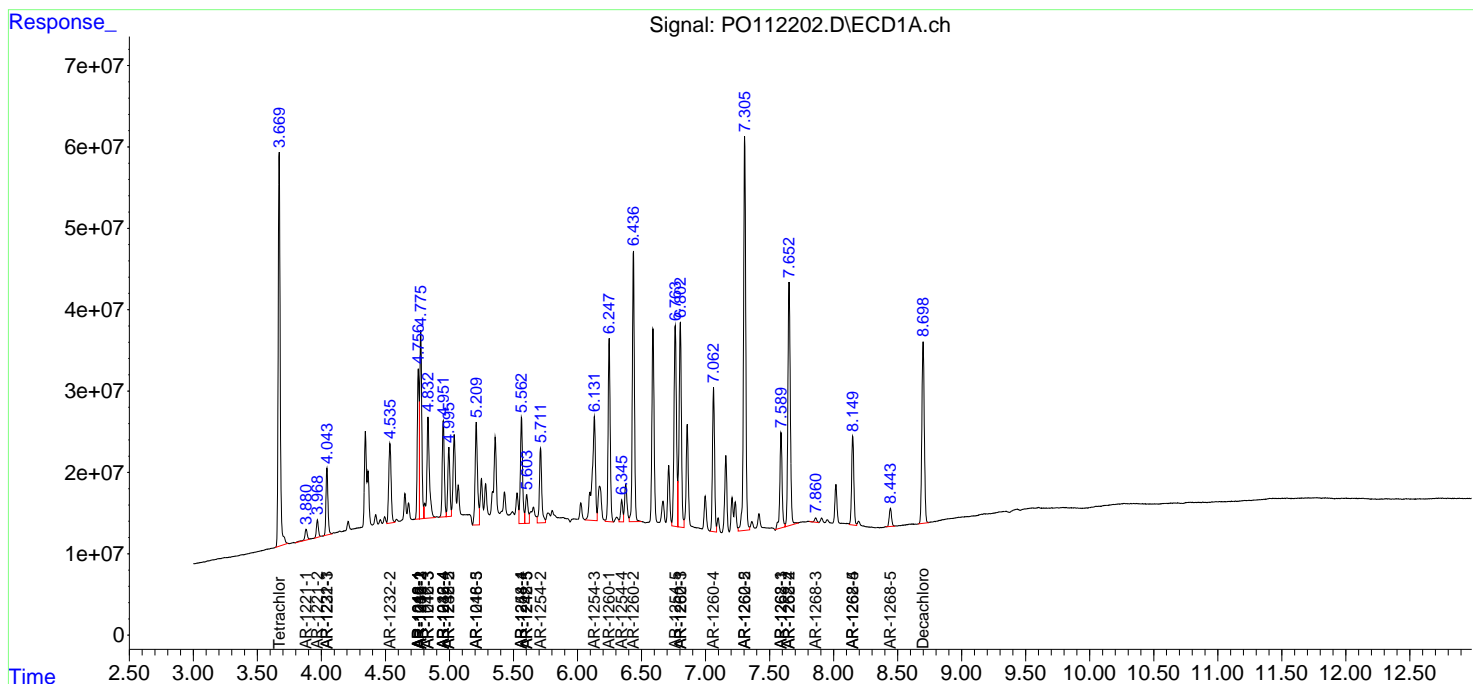
(f)=RT Delta > 1/2 Window (#)=Amounts differ by > 25% (m)=manual int.

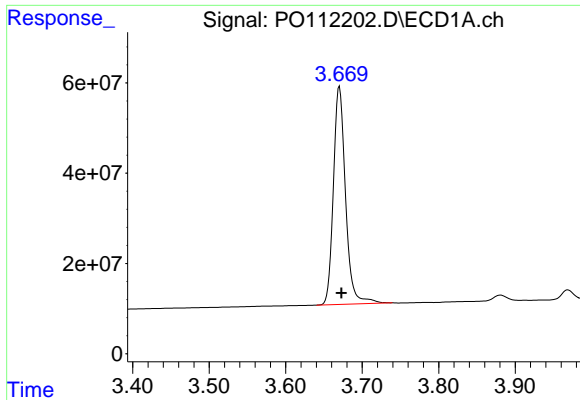
Data Path : Z:\pestpcbsrv\HPCHEM1\ECD_O\Data\PO071025\
 Data File : PO112202.D
 Signal(s) : Signal #1: ECD1A.ch Signal #2: ECD2B.ch
 Acq On : 10 Jul 2025 20:32
 Operator : YP/AJ
 Sample : AR1660CCC500
 Misc :
 ALS Vial : 3 Sample Multiplier: 1

Instrument :
 ECD_O
 ClientSampleId :
 AR1660CCC500

Integration File signal 1: autoint1.e
 Integration File signal 2: autoint2.e
 Quant Time: Jul 10 22:57:18 2025
 Quant Method : Z:\pestpcbsrv\HPCHEM1\ECD_O\methods\PO070825.M
 Quant Title : GC EXTRACTABLES
 QLast Update : Wed Jul 09 10:50:50 2025
 Response via : Initial Calibration
 Integrator: ChemStation

Volume Inj. : 2 µl
 Signal #1 Phase : ZB-MR1 Signal #2 Phase: ZB-MR2
 Signal #1 Info : 30Mx0.32mmx 0.50µ Signal #2 Info : 30M x 0.32mm x 0.25µm

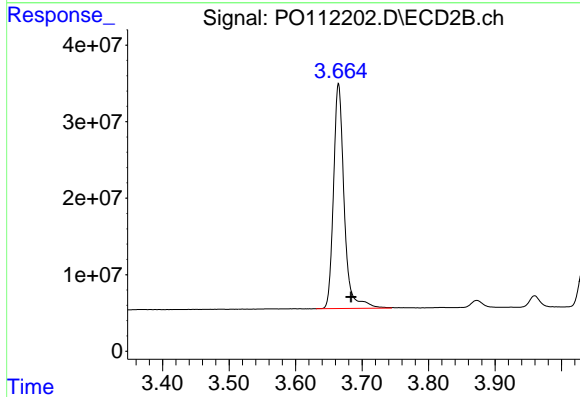




#1 Tetrachloro-m-xylene

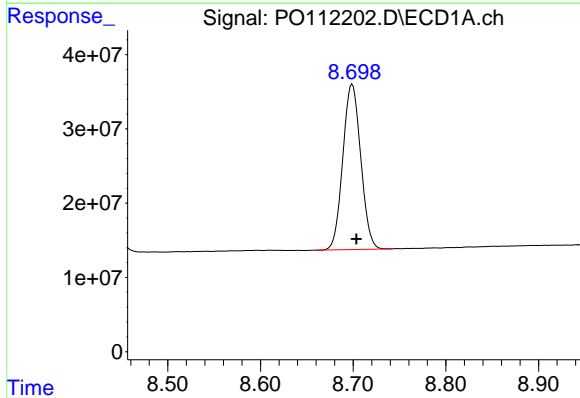
R.T.: 3.670 min
 Delta R.T.: -0.003 min
 Response: 530831853
 Conc: 53.65 ng/ml

Instrument :
 ECD_O
 ClientSampleId :
 AR1660CCC500



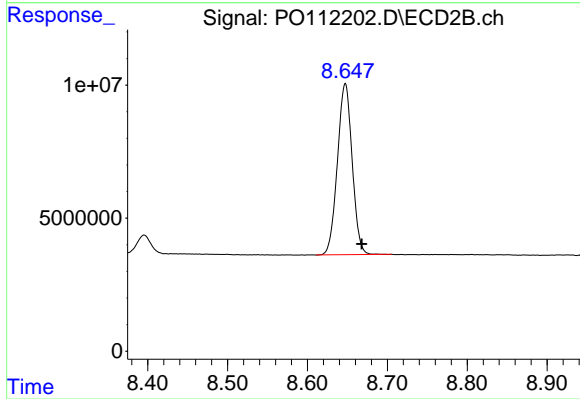
#1 Tetrachloro-m-xylene

R.T.: 3.665 min
 Delta R.T.: -0.019 min
 Response: 327414788
 Conc: 51.39 ng/ml



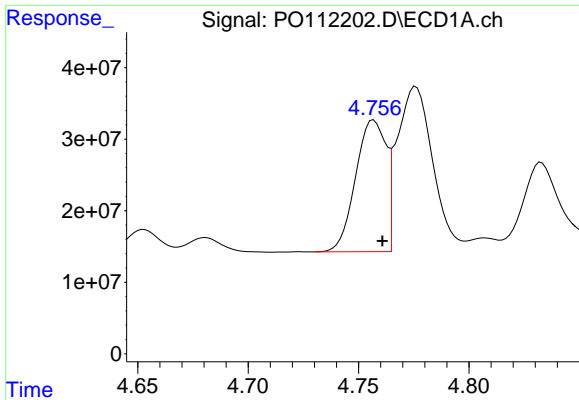
#2 Decachlorobiphenyl

R.T.: 8.699 min
 Delta R.T.: -0.004 min
 Response: 299109433
 Conc: 43.75 ng/ml



#2 Decachlorobiphenyl

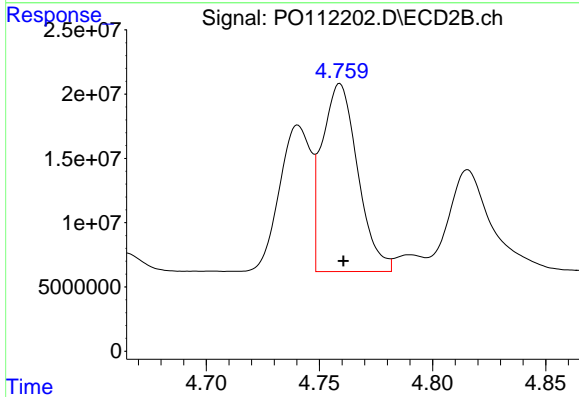
R.T.: 8.647 min
 Delta R.T.: -0.021 min
 Response: 82521445
 Conc: 47.88 ng/ml



#3 AR-1016-1

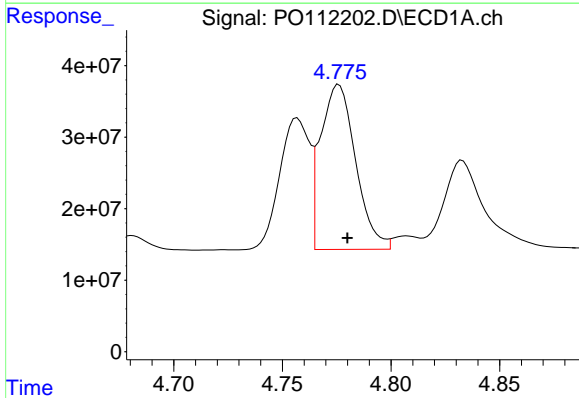
R.T.: 4.757 min
 Delta R.T.: -0.004 min
 Response: 175876384
 Conc: 517.10 ng/ml

Instrument :
 ECD_O
 ClientSampleId :
 AR1660CCC500



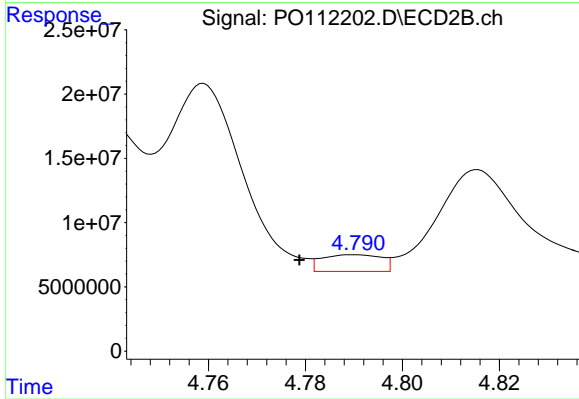
#3 AR-1016-1

R.T.: 4.759 min
 Delta R.T.: -0.002 min
 Response: 160606963
 Conc: 720.75 ng/ml



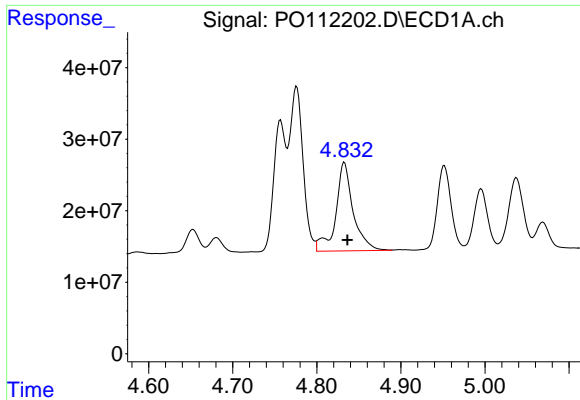
#4 AR-1016-2

R.T.: 4.776 min
 Delta R.T.: -0.004 min
 Response: 259637580
 Conc: 522.10 ng/ml



#4 AR-1016-2

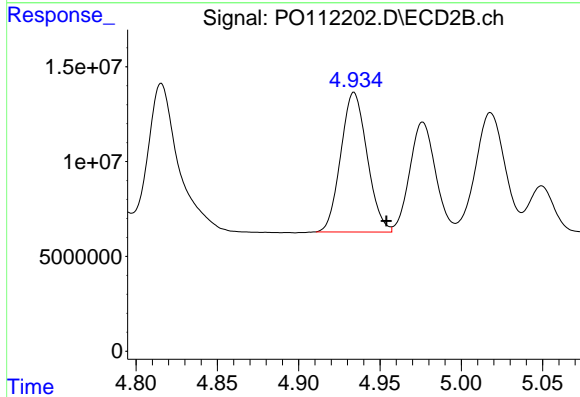
R.T.: 4.790 min
 Delta R.T.: 0.011 min
 Response: 11039683
 Conc: 33.55 ng/ml



#5 AR-1016-3

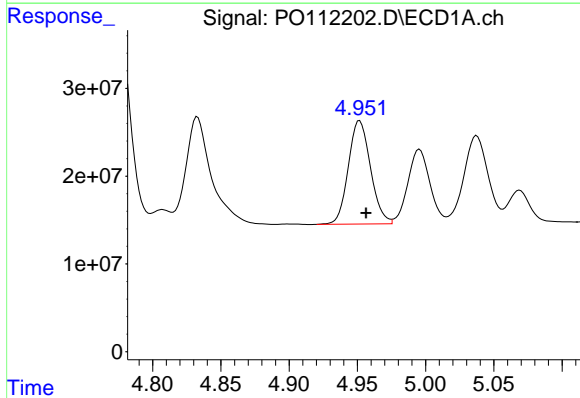
R.T.: 4.833 min
 Delta R.T.: -0.003 min
 Response: 178563282
 Conc: 551.61 ng/ml

Instrument :
 ECD_O
 ClientSampleId :
 AR1660CCC500



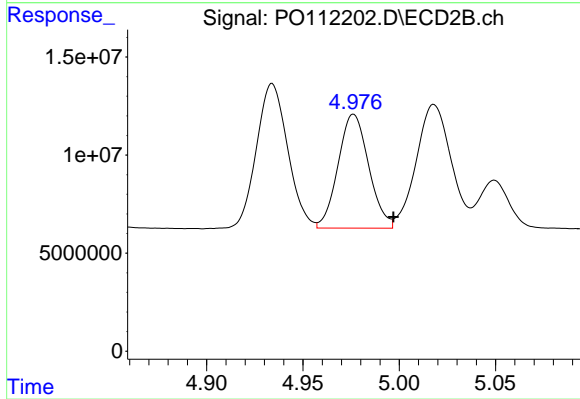
#5 AR-1016-3

R.T.: 4.934 min
 Delta R.T.: -0.020 min
 Response: 82974752
 Conc: 488.47 ng/ml



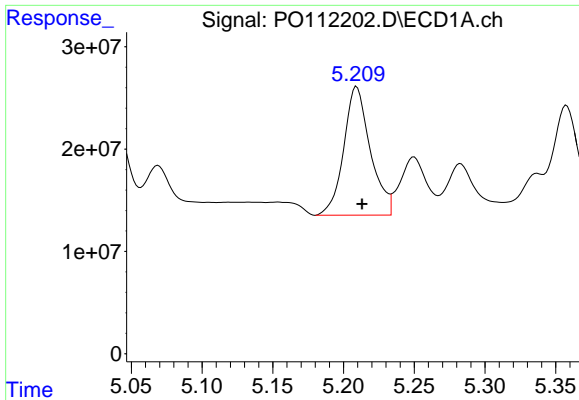
#6 AR-1016-4

R.T.: 4.952 min
 Delta R.T.: -0.005 min
 Response: 133584442
 Conc: 520.19 ng/ml



#6 AR-1016-4

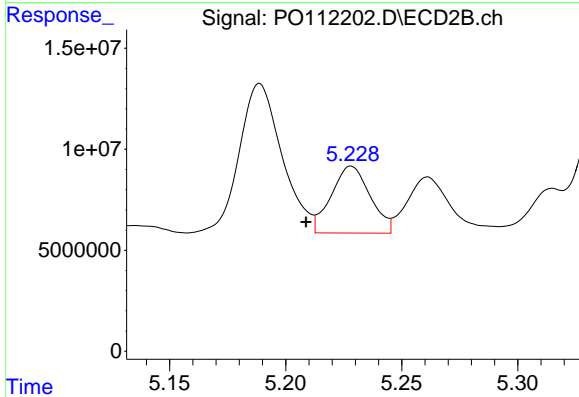
R.T.: 4.976 min
 Delta R.T.: -0.021 min
 Response: 64261363
 Conc: 468.28 ng/ml



#7 AR-1016-5

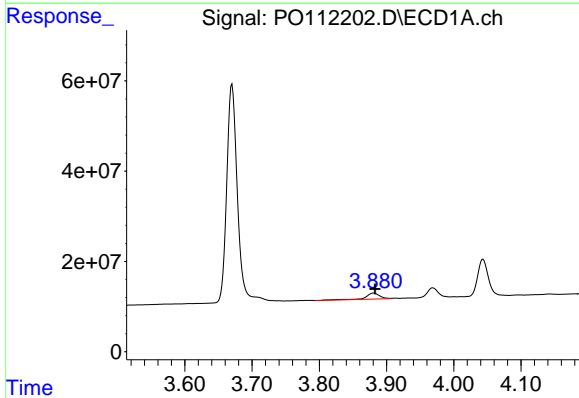
R.T.: 5.209 min
 Delta R.T.: -0.004 min
 Response: 164514516
 Conc: 601.16 ng/ml

Instrument :
 ECD_O
 ClientSampleId :
 AR1660CCC500



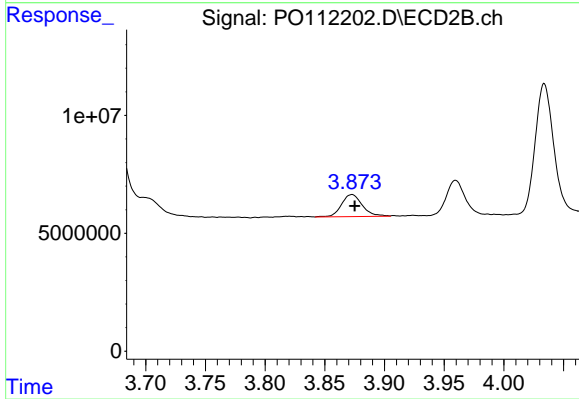
#7 AR-1016-5

R.T.: 5.228 min
 Delta R.T.: 0.019 min
 Response: 38717640
 Conc: 224.51 ng/ml



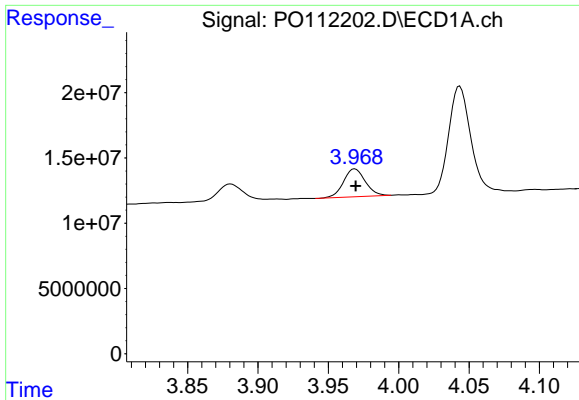
#8 AR-1221-1

R.T.: 3.881 min
 Delta R.T.: -0.002 min
 Response: 18248702
 Conc: 156.49 ng/ml



#8 AR-1221-1

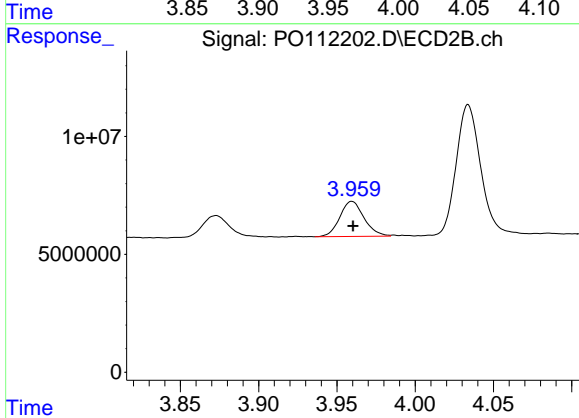
R.T.: 3.873 min
 Delta R.T.: -0.002 min
 Response: 11327753
 Conc: 137.65 ng/ml



#9 AR-1221-2

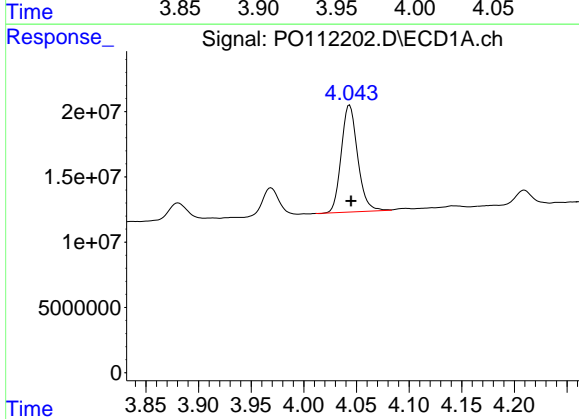
R.T.: 3.969 min
 Delta R.T.: 0.000 min
 Response: 23091783
 Conc: 292.89 ng/ml

Instrument :
 ECD_O
 ClientSampleId :
 AR1660CCC500



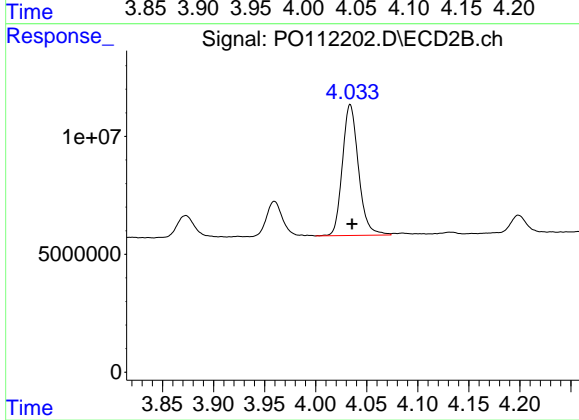
#9 AR-1221-2

R.T.: 3.960 min
 Delta R.T.: 0.000 min
 Response: 16101359
 Conc: 271.28 ng/ml



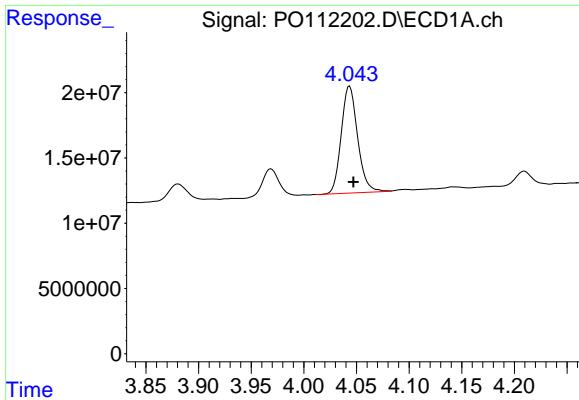
#10 AR-1221-3

R.T.: 4.044 min
 Delta R.T.: -0.001 min
 Response: 89083586
 Conc: 330.45 ng/ml



#10 AR-1221-3

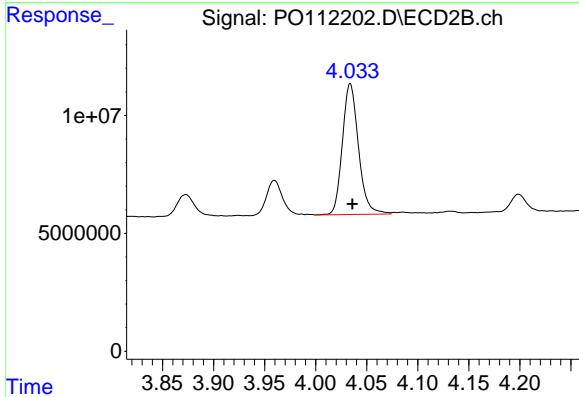
R.T.: 4.034 min
 Delta R.T.: -0.002 min
 Response: 60858005
 Conc: 322.38 ng/ml



#11 AR-1232-1

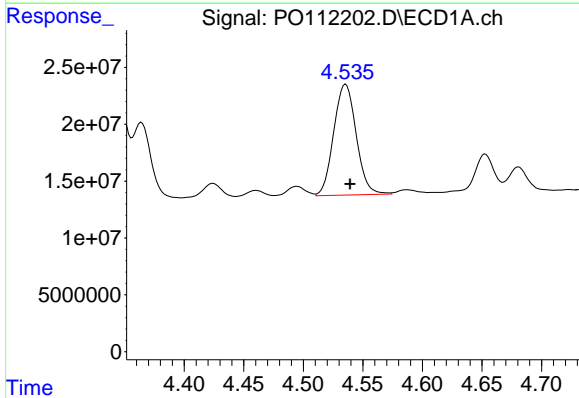
R.T.: 4.044 min
 Delta R.T.: -0.003 min
 Response: 89083586
 Conc: 414.98 ng/ml

Instrument :
 ECD_O
 ClientSampleId :
 AR1660CCC500



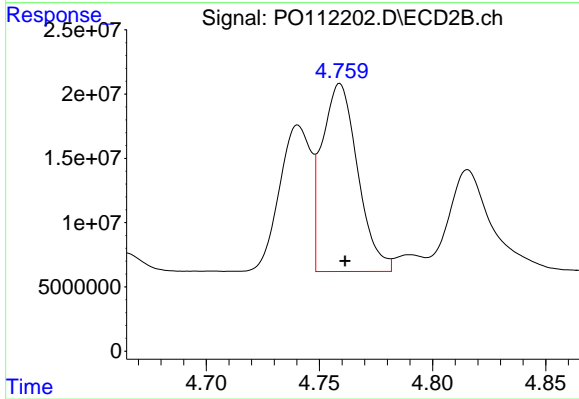
#11 AR-1232-1

R.T.: 4.034 min
 Delta R.T.: -0.002 min
 Response: 60858005
 Conc: 405.45 ng/ml



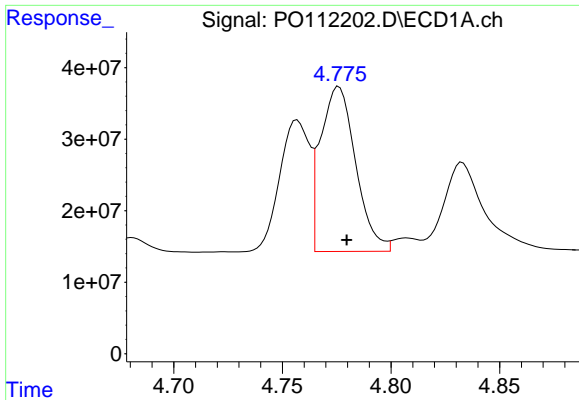
#12 AR-1232-2

R.T.: 4.536 min
 Delta R.T.: -0.004 min
 Response: 127917602
 Conc: 1125.67 ng/ml



#12 AR-1232-2

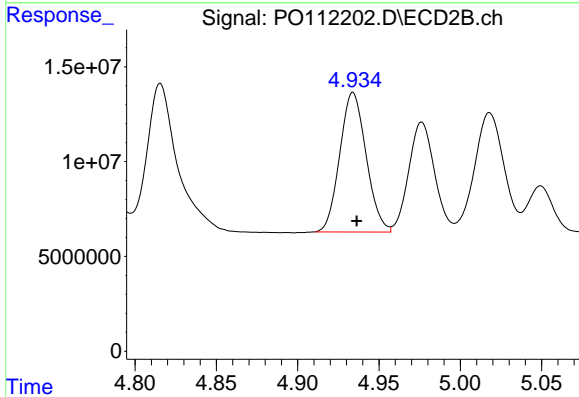
R.T.: 4.759 min
 Delta R.T.: -0.002 min
 Response: 160606963
 Conc: 1049.13 ng/ml



#13 AR-1232-3

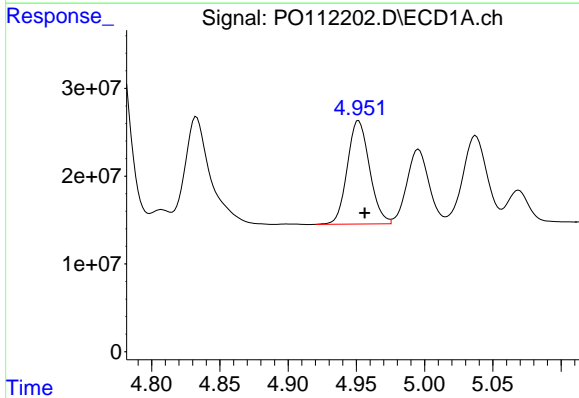
R.T.: 4.776 min
 Delta R.T.: -0.004 min
 Response: 259637580
 Conc: 1133.74 ng/ml

Instrument :
 ECD_O
 ClientSampleId :
 AR1660CCC500



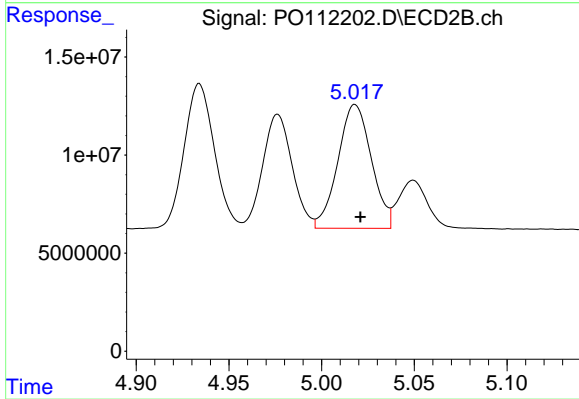
#13 AR-1232-3

R.T.: 4.934 min
 Delta R.T.: -0.002 min
 Response: 82974752
 Conc: 1098.92 ng/ml



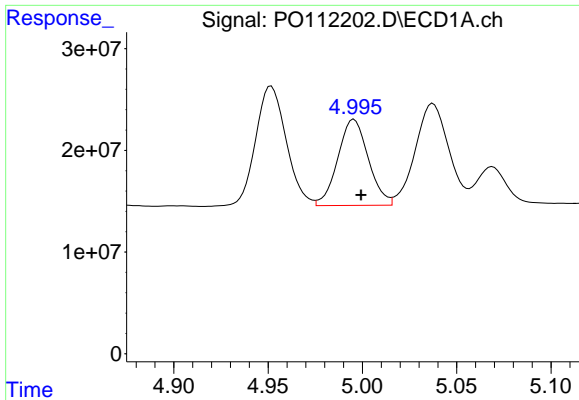
#14 AR-1232-4

R.T.: 4.952 min
 Delta R.T.: -0.004 min
 Response: 133584442
 Conc: 1168.75 ng/ml



#14 AR-1232-4

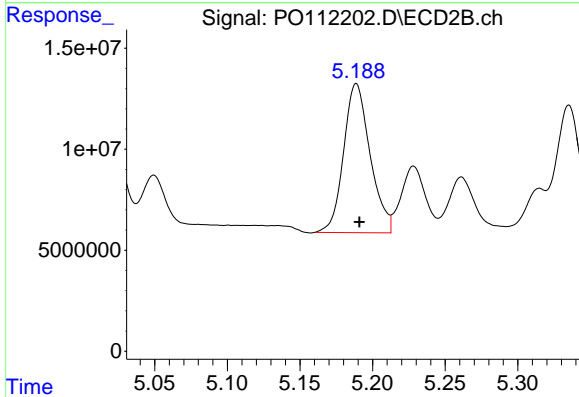
R.T.: 5.018 min
 Delta R.T.: -0.003 min
 Response: 79448863
 Conc: 1203.99 ng/ml



#15 AR-1232-5

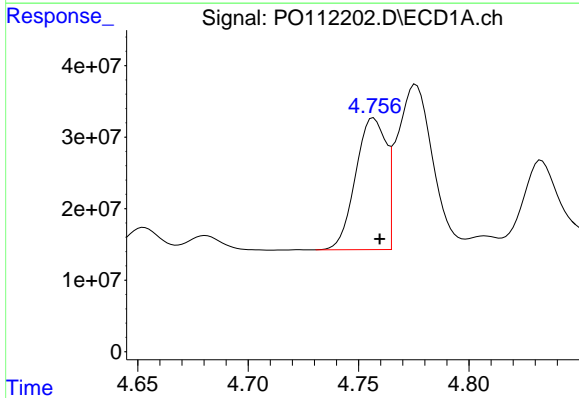
R.T.: 4.996 min
 Delta R.T.: -0.004 min
 Response: 95343852
 Conc: 1298.96 ng/ml

Instrument :
 ECD_O
 ClientSampleId :
 AR1660CCC500



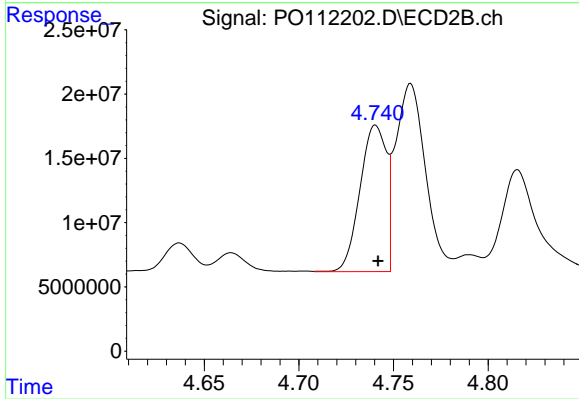
#15 AR-1232-5

R.T.: 5.189 min
 Delta R.T.: -0.002 min
 Response: 93778323
 Conc: 1262.84 ng/ml



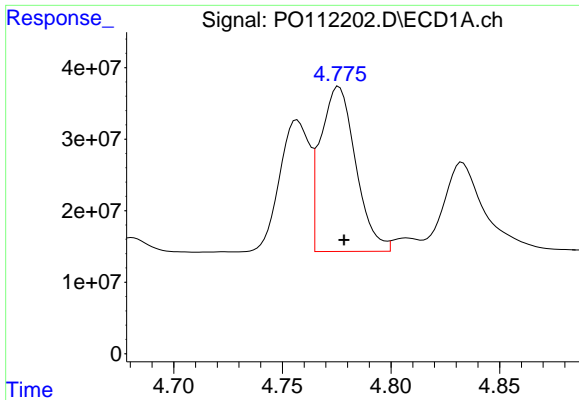
#16 AR-1242-1

R.T.: 4.757 min
 Delta R.T.: -0.002 min
 Response: 175876384
 Conc: 607.23 ng/ml



#16 AR-1242-1

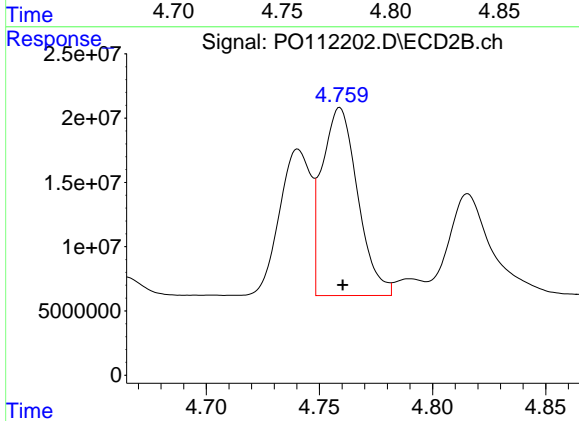
R.T.: 4.740 min
 Delta R.T.: -0.001 min
 Response: 110336824
 Conc: 569.16 ng/ml



#17 AR-1242-2

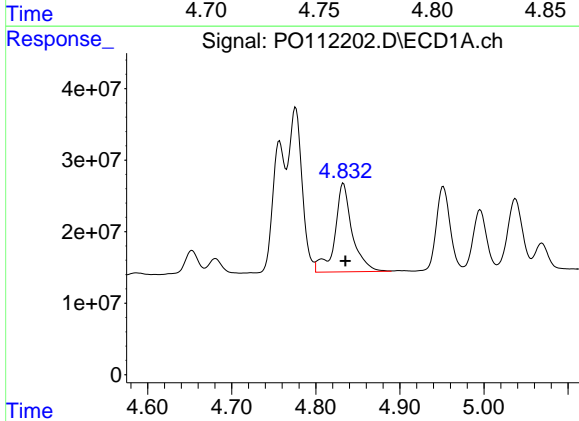
R.T.: 4.776 min
 Delta R.T.: -0.002 min
 Response: 259637580
 Conc: 609.59 ng/ml

Instrument :
 ECD_O
 ClientSampleId :
 AR1660CCC500



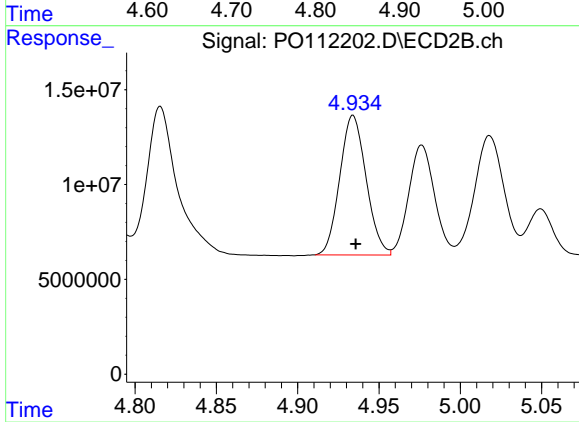
#17 AR-1242-2

R.T.: 4.759 min
 Delta R.T.: -0.001 min
 Response: 160606963
 Conc: 566.81 ng/ml



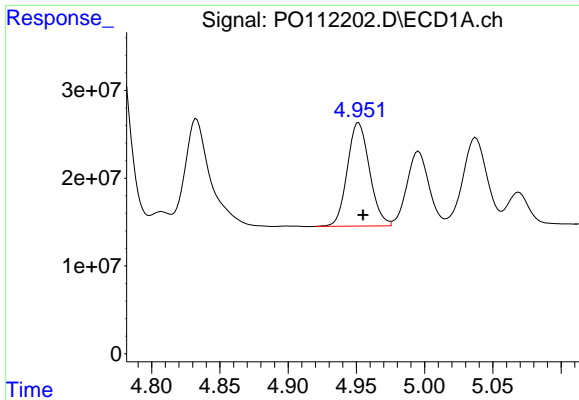
#18 AR-1242-3

R.T.: 4.833 min
 Delta R.T.: -0.002 min
 Response: 178563282
 Conc: 652.44 ng/ml



#18 AR-1242-3

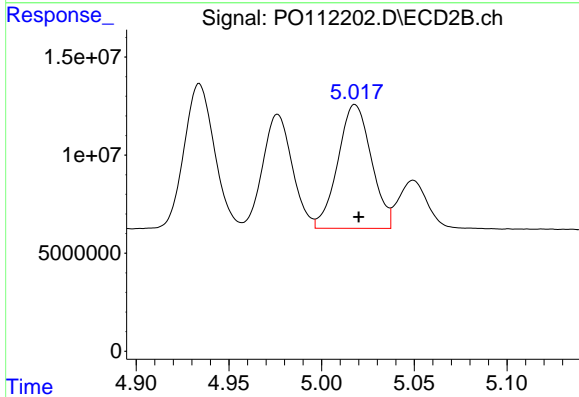
R.T.: 4.934 min
 Delta R.T.: -0.002 min
 Response: 82974752
 Conc: 569.58 ng/ml



#19 AR-1242-4

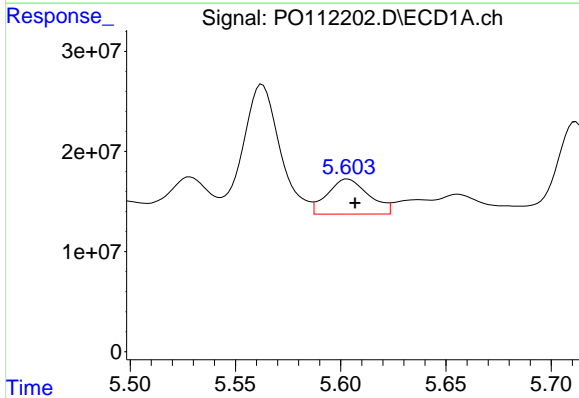
R.T.: 4.952 min
 Delta R.T.: -0.003 min
 Response: 133584442
 Conc: 592.87 ng/ml

Instrument :
 ECD_O
 ClientSampleId :
 AR1660CCC500



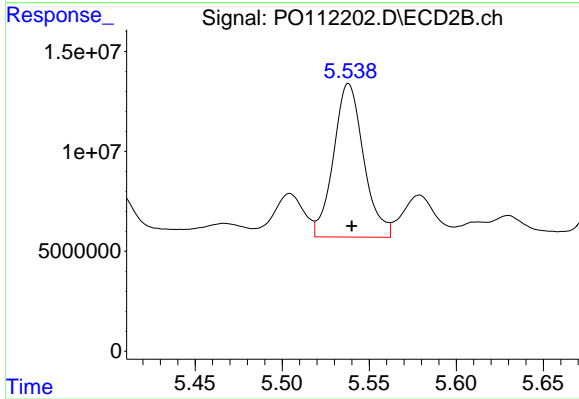
#19 AR-1242-4

R.T.: 5.018 min
 Delta R.T.: -0.002 min
 Response: 79448863
 Conc: 560.13 ng/ml



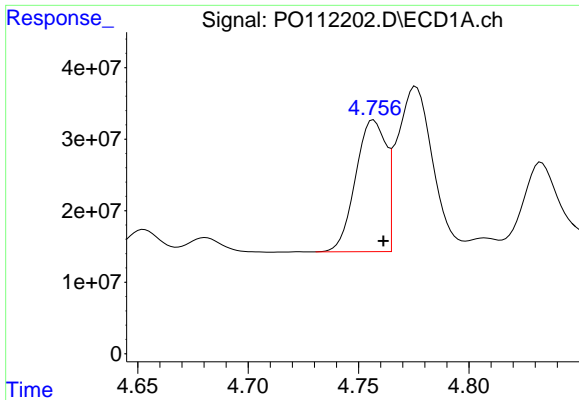
#20 AR-1242-5

R.T.: 5.603 min
 Delta R.T.: -0.003 min
 Response: 48060102
 Conc: 227.05 ng/ml



#20 AR-1242-5

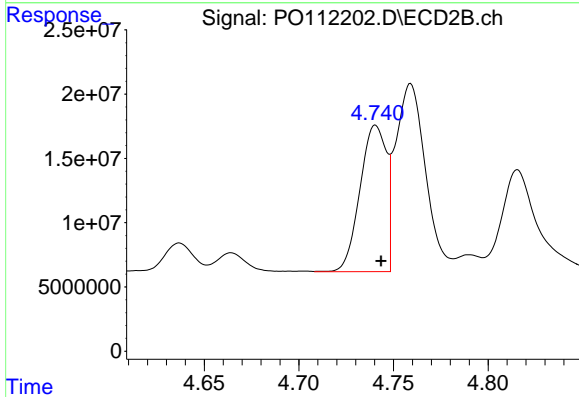
R.T.: 5.538 min
 Delta R.T.: -0.002 min
 Response: 92433857
 Conc: 508.62 ng/ml



#21 AR-1248-1

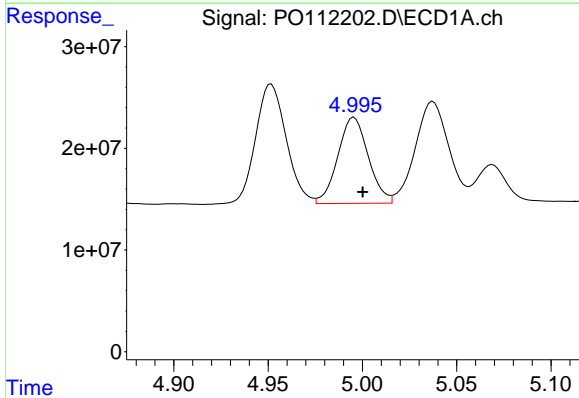
R.T.: 4.757 min
 Delta R.T.: -0.004 min
 Response: 175876384
 Conc: 775.13 ng/ml

Instrument :
 ECD_O
 ClientSampleId :
 AR1660CCC500



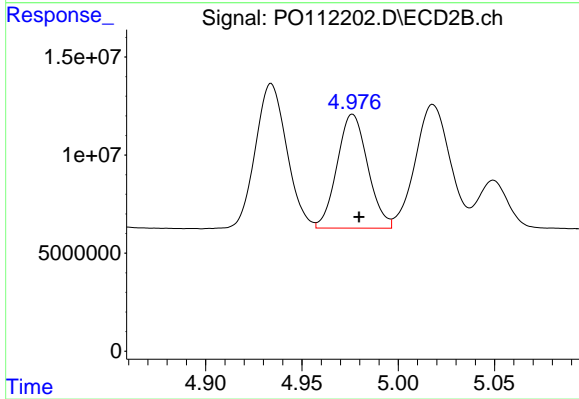
#21 AR-1248-1

R.T.: 4.740 min
 Delta R.T.: -0.003 min
 Response: 110336824
 Conc: 714.76 ng/ml



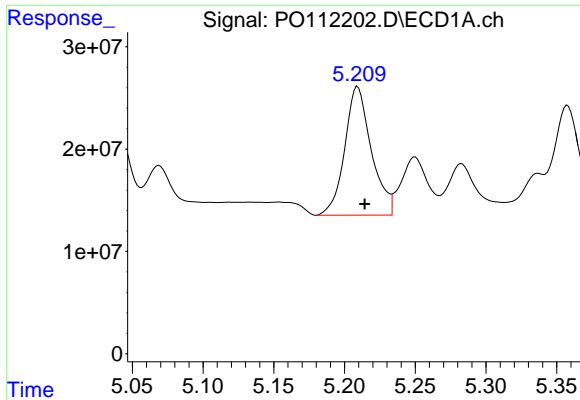
#22 AR-1248-2

R.T.: 4.996 min
 Delta R.T.: -0.005 min
 Response: 95343852
 Conc: 309.23 ng/ml



#22 AR-1248-2

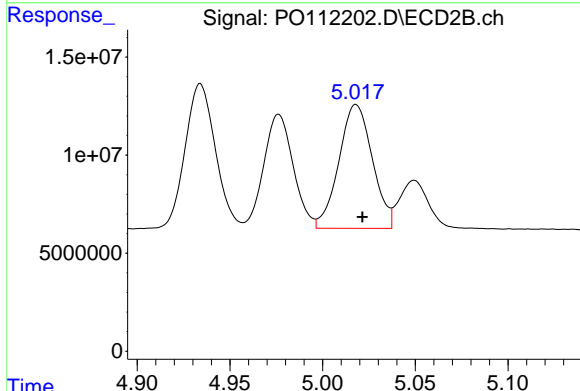
R.T.: 4.976 min
 Delta R.T.: -0.003 min
 Response: 64261363
 Conc: 312.30 ng/ml



#23 AR-1248-3

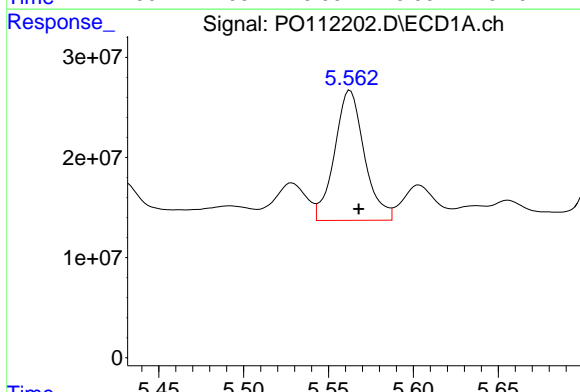
R.T.: 5.209 min
 Delta R.T.: -0.005 min
 Response: 164514516
 Conc: 403.90 ng/ml

Instrument :
 ECD_O
 ClientSampleId :
 AR1660CCC500



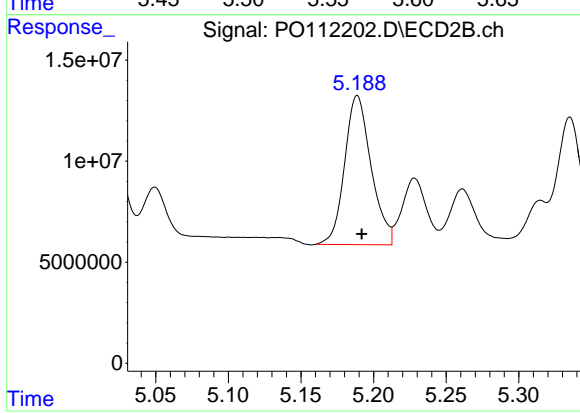
#23 AR-1248-3

R.T.: 5.018 min
 Delta R.T.: -0.003 min
 Response: 79448863
 Conc: 369.88 ng/ml



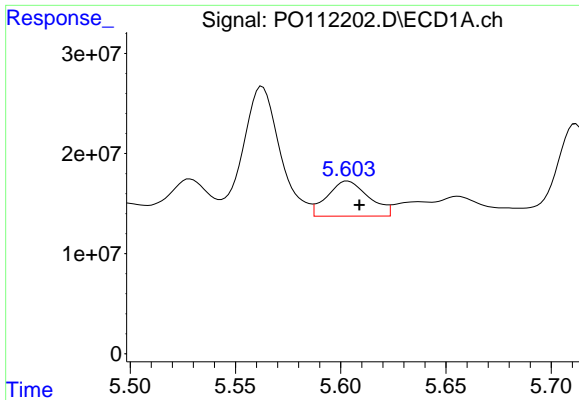
#24 AR-1248-4

R.T.: 5.563 min
 Delta R.T.: -0.005 min
 Response: 158598345
 Conc: 274.80 ng/ml



#24 AR-1248-4

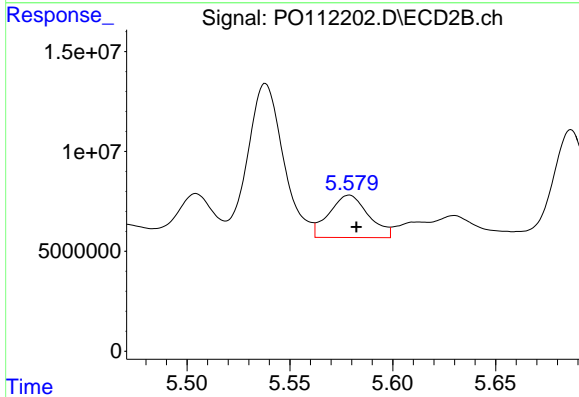
R.T.: 5.189 min
 Delta R.T.: -0.003 min
 Response: 93778323
 Conc: 362.46 ng/ml



#25 AR-1248-5

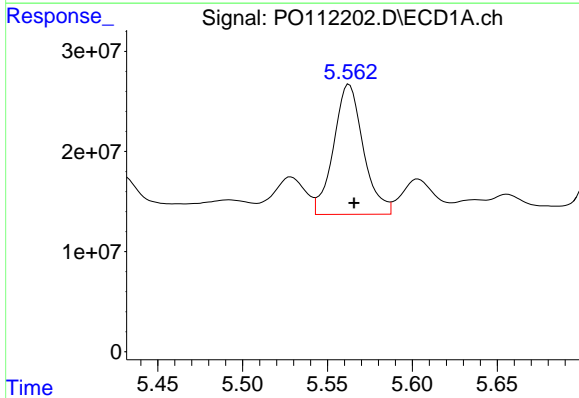
R.T.: 5.603 min
 Delta R.T.: -0.005 min
 Response: 48060102
 Conc: 123.13 ng/ml

Instrument :
 ECD_O
 ClientSampleId :
 AR1660CCC500



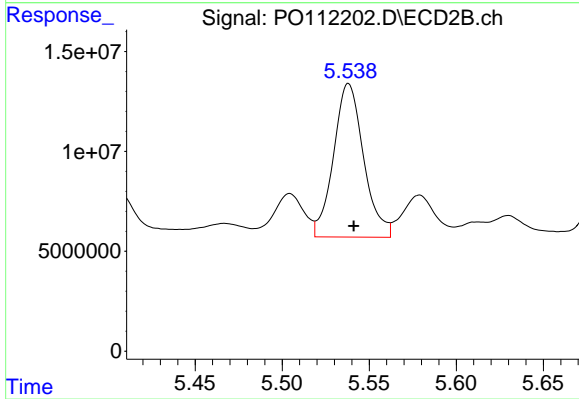
#25 AR-1248-5

R.T.: 5.579 min
 Delta R.T.: -0.003 min
 Response: 28357060
 Conc: 113.18 ng/ml



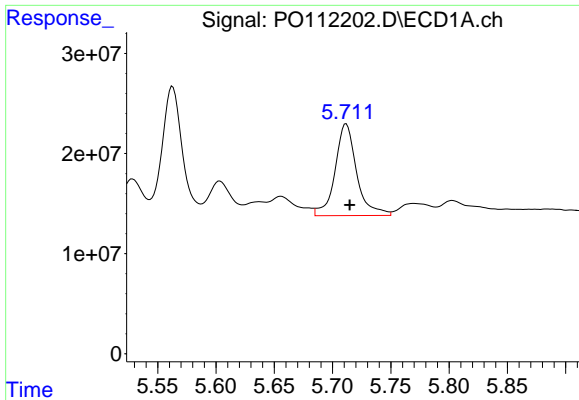
#26 AR-1254-1

R.T.: 5.563 min
 Delta R.T.: -0.003 min
 Response: 158598345
 Conc: 257.84 ng/ml



#26 AR-1254-1

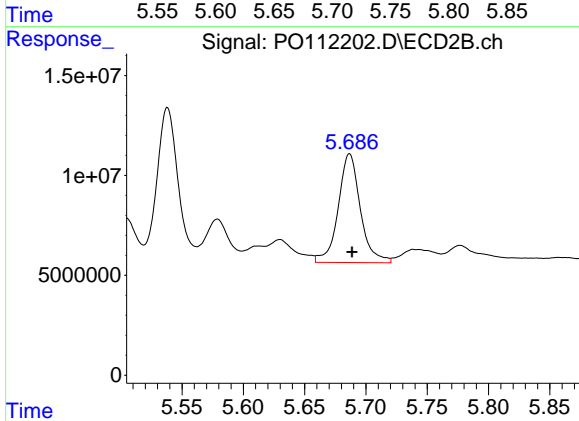
R.T.: 5.538 min
 Delta R.T.: -0.003 min
 Response: 92433857
 Conc: 242.50 ng/ml



#27 AR-1254-2

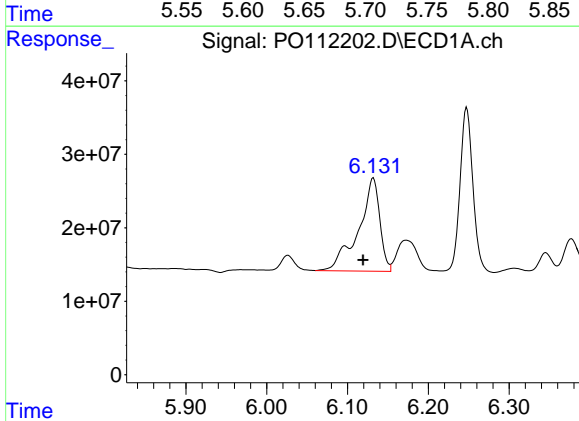
R.T.: 5.712 min
 Delta R.T.: -0.003 min
 Response: 118165820
 Conc: 220.59 ng/ml

Instrument :
 ECD_O
 ClientSampleId :
 AR1660CCC500



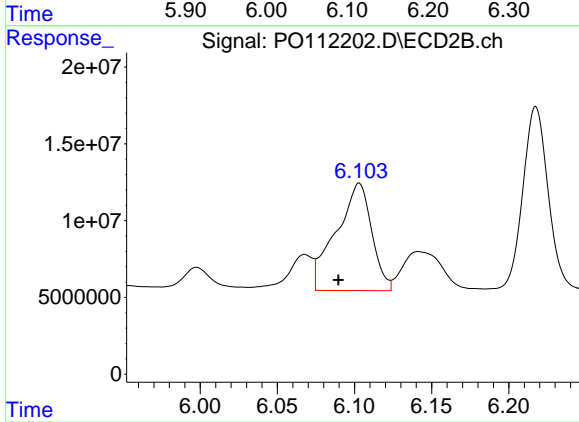
#27 AR-1254-2

R.T.: 5.687 min
 Delta R.T.: -0.002 min
 Response: 68476807
 Conc: 206.37 ng/ml



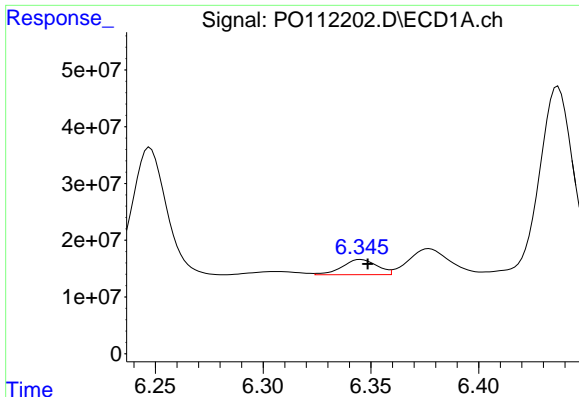
#28 AR-1254-3

R.T.: 6.132 min
 Delta R.T.: 0.013 min
 Response: 232275161
 Conc: 276.66 ng/ml



#28 AR-1254-3

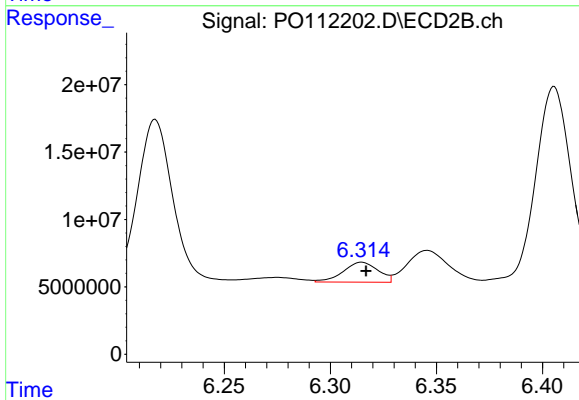
R.T.: 6.103 min
 Delta R.T.: 0.013 min
 Response: 112043208
 Conc: 232.43 ng/ml



#29 AR-1254-4

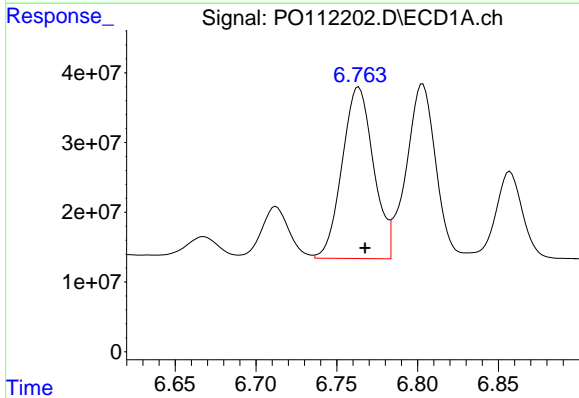
R.T.: 6.345 min
 Delta R.T.: -0.003 min
 Response: 30105934
 Conc: 62.59 ng/ml

Instrument :
 ECD_O
 ClientSampleId :
 AR1660CCC500



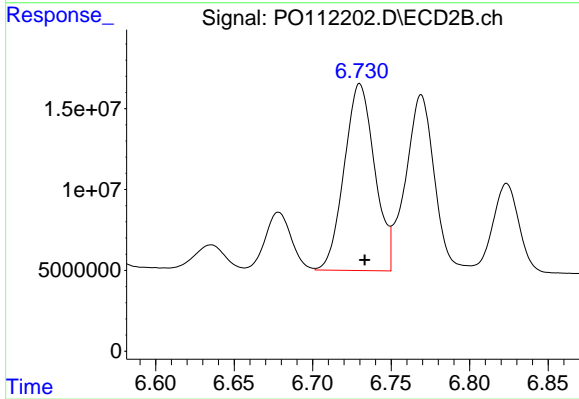
#29 AR-1254-4

R.T.: 6.315 min
 Delta R.T.: -0.002 min
 Response: 16979469
 Conc: 65.13 ng/ml



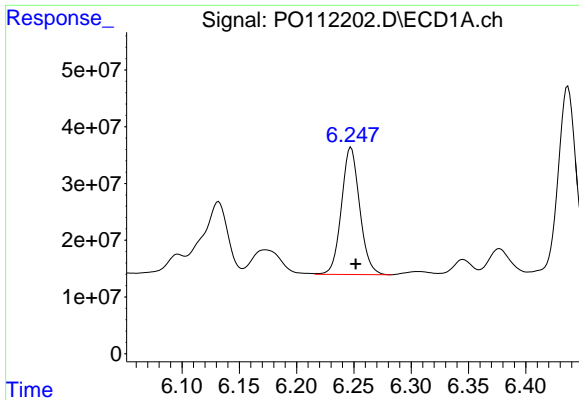
#30 AR-1254-5

R.T.: 6.764 min
 Delta R.T.: -0.004 min
 Response: 332111012
 Conc: 429.11 ng/ml



#30 AR-1254-5

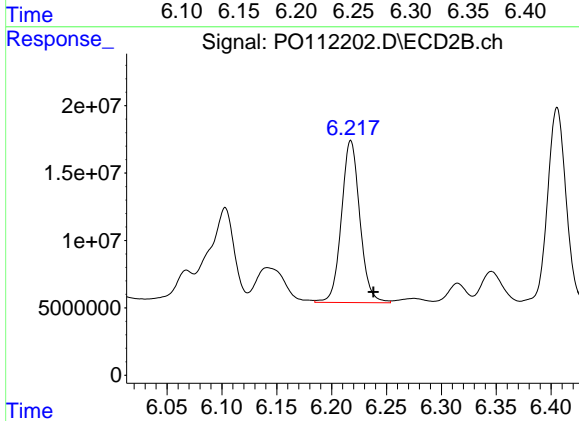
R.T.: 6.730 min
 Delta R.T.: -0.003 min
 Response: 155996434
 Conc: 437.75 ng/ml



#31 AR-1260-1

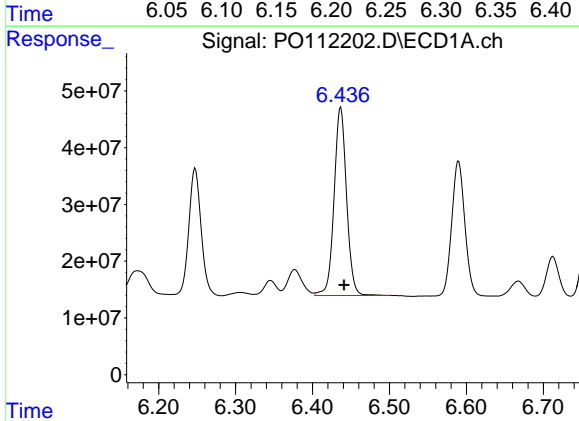
R.T.: 6.247 min
 Delta R.T.: -0.004 min
 Response: 249043528
 Conc: 496.86 ng/ml

Instrument :
 ECD_O
 ClientSampleId :
 AR1660CCC500



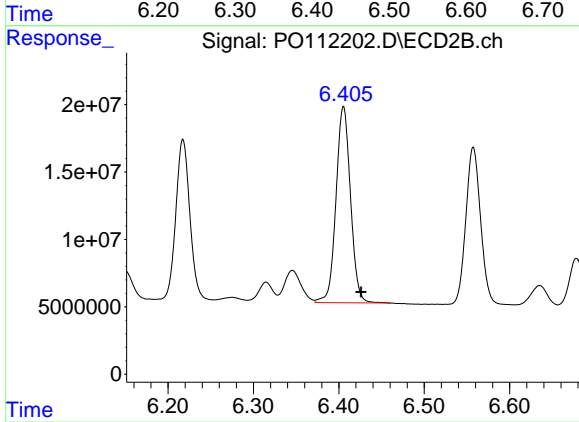
#31 AR-1260-1

R.T.: 6.217 min
 Delta R.T.: -0.021 min
 Response: 140447086
 Conc: 500.59 ng/ml



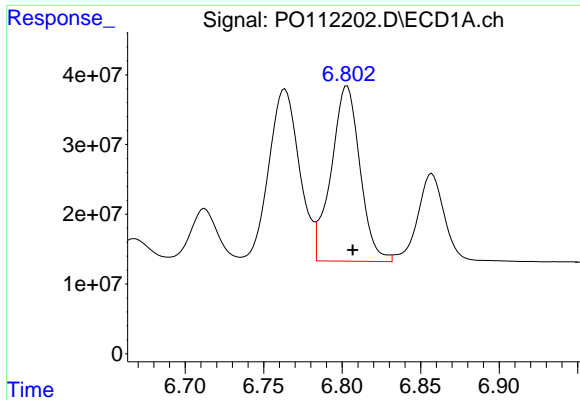
#32 AR-1260-2

R.T.: 6.437 min
 Delta R.T.: -0.004 min
 Response: 373104048
 Conc: 505.47 ng/ml



#32 AR-1260-2

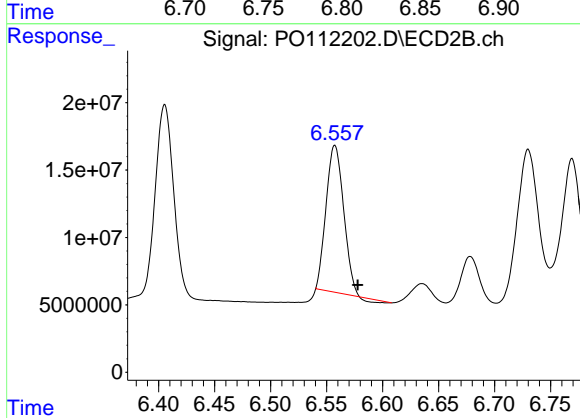
R.T.: 6.405 min
 Delta R.T.: -0.021 min
 Response: 171780048
 Conc: 505.24 ng/ml



#33 AR-1260-3

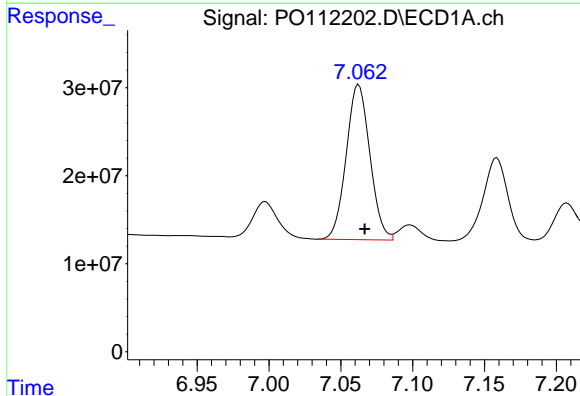
R.T.: 6.803 min
 Delta R.T.: -0.004 min
 Response: 320919297
 Conc: 489.59 ng/ml

Instrument :
 ECD_O
 ClientSampleId :
 AR1660CCC500



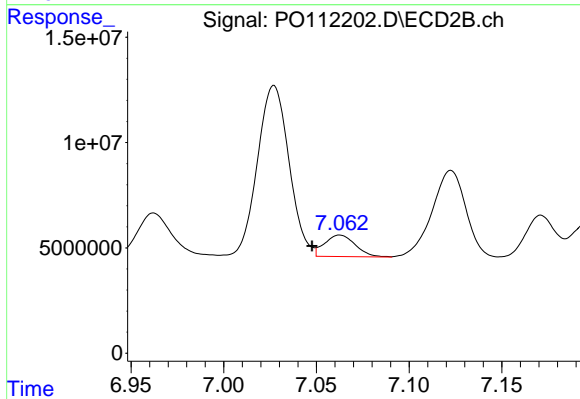
#33 AR-1260-3

R.T.: 6.557 min
 Delta R.T.: -0.020 min
 Response: 117576272
 Conc: 426.64 ng/ml



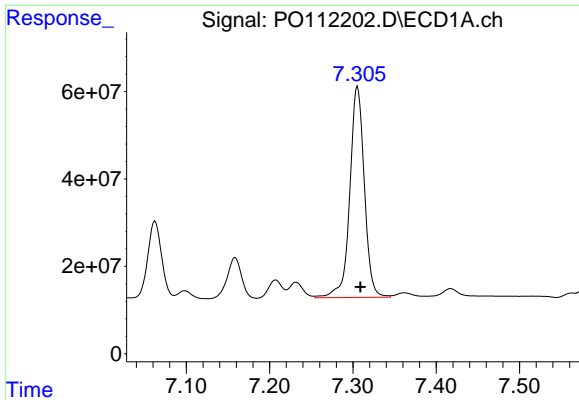
#34 AR-1260-4

R.T.: 7.063 min
 Delta R.T.: -0.004 min
 Response: 201897117
 Conc: 463.87 ng/ml



#34 AR-1260-4

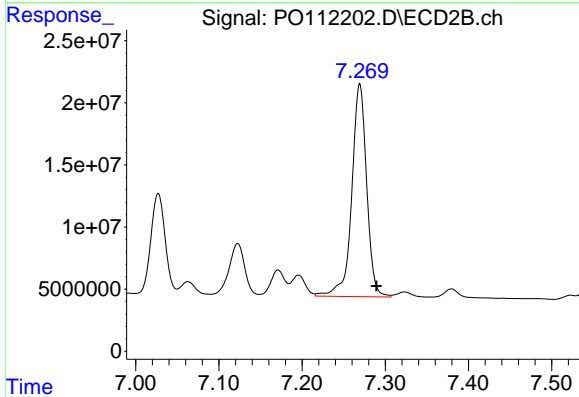
R.T.: 7.063 min
 Delta R.T.: 0.015 min
 Response: 11856732
 Conc: 59.09 ng/ml



#35 AR-1260-5

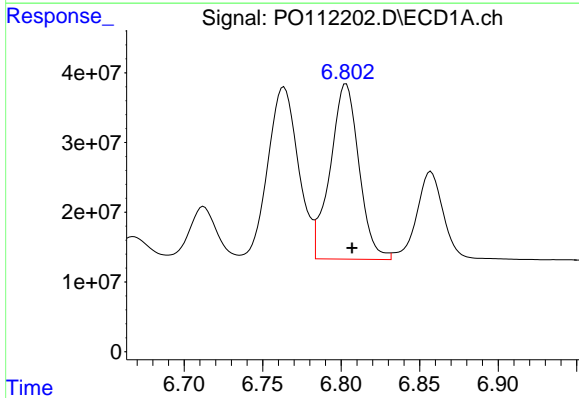
R.T.: 7.306 min
 Delta R.T.: -0.003 min
 Response: 585997700
 Conc: 464.14 ng/ml

Instrument :
 ECD_O
 ClientSampleId :
 AR1660CCC500



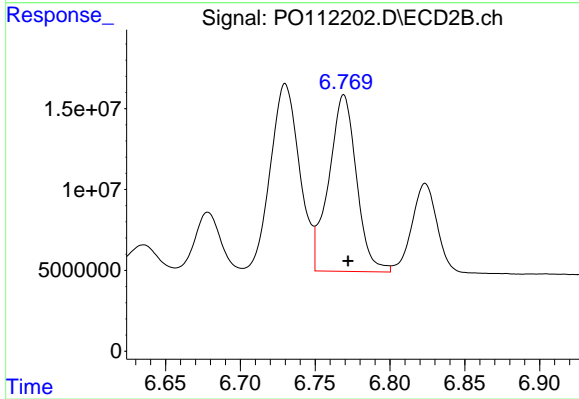
#35 AR-1260-5

R.T.: 7.269 min
 Delta R.T.: -0.020 min
 Response: 213586919
 Conc: 477.05 ng/ml



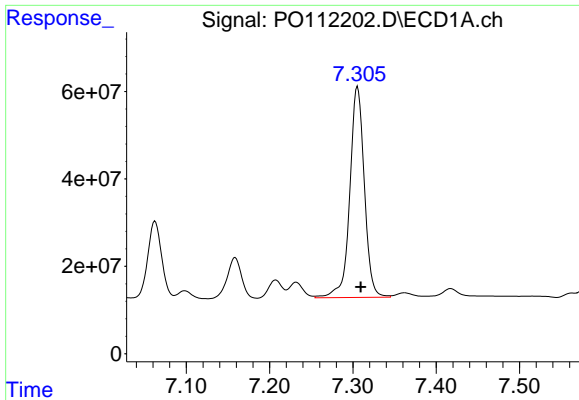
#36 AR-1262-1

R.T.: 6.803 min
 Delta R.T.: -0.004 min
 Response: 320919297
 Conc: 314.11 ng/ml



#36 AR-1262-1

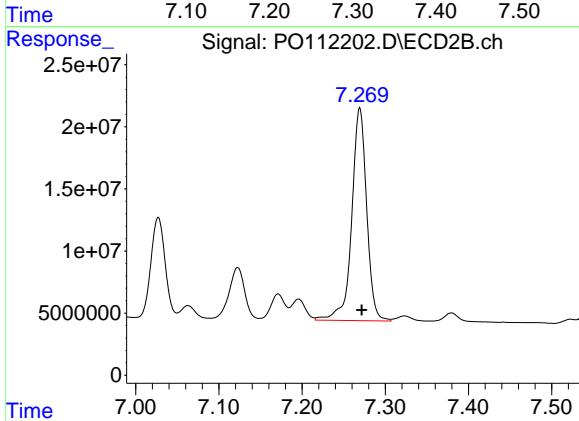
R.T.: 6.769 min
 Delta R.T.: -0.003 min
 Response: 140493689
 Conc: 344.92 ng/ml



#37 AR-1262-2

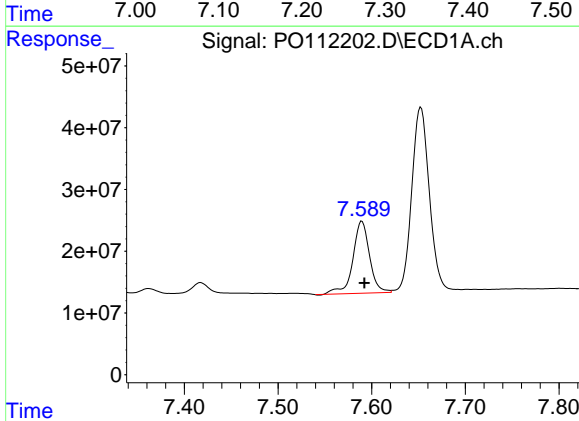
R.T.: 7.306 min
 Delta R.T.: -0.004 min
 Response: 585997700
 Conc: 357.45 ng/ml

Instrument :
 ECD_O
 ClientSampleId :
 AR1660CCC500



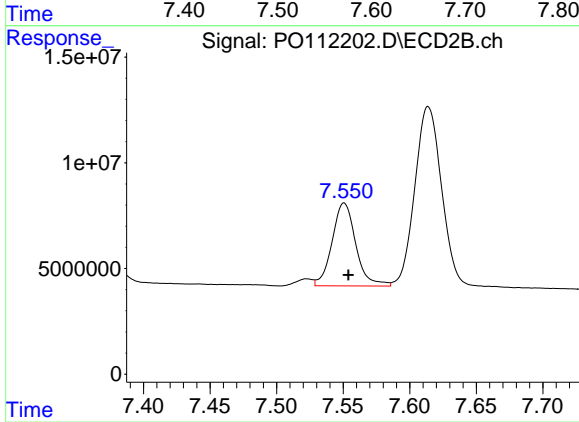
#37 AR-1262-2

R.T.: 7.269 min
 Delta R.T.: -0.002 min
 Response: 213586919
 Conc: 416.72 ng/ml



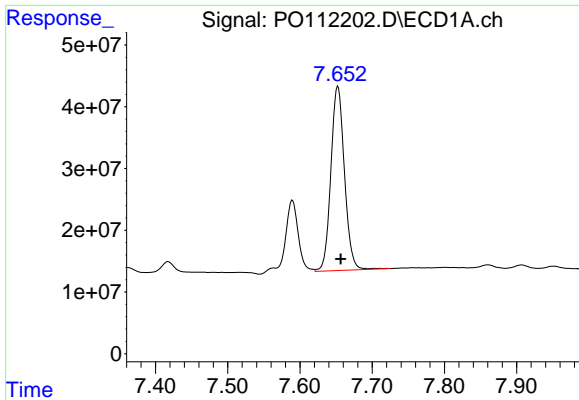
#38 AR-1262-3

R.T.: 7.590 min
 Delta R.T.: -0.002 min
 Response: 145035025
 Conc: 225.92 ng/ml



#38 AR-1262-3

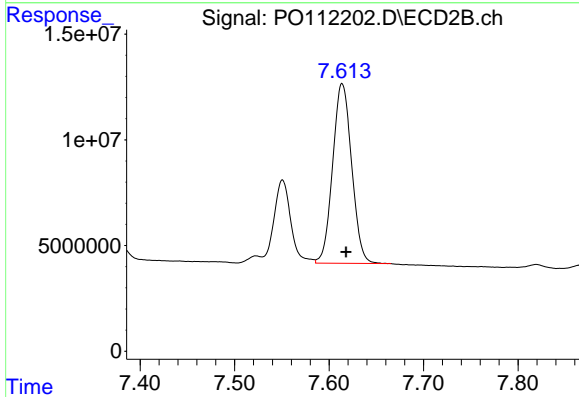
R.T.: 7.551 min
 Delta R.T.: -0.003 min
 Response: 48611180
 Conc: 270.78 ng/ml



#39 AR-1262-4

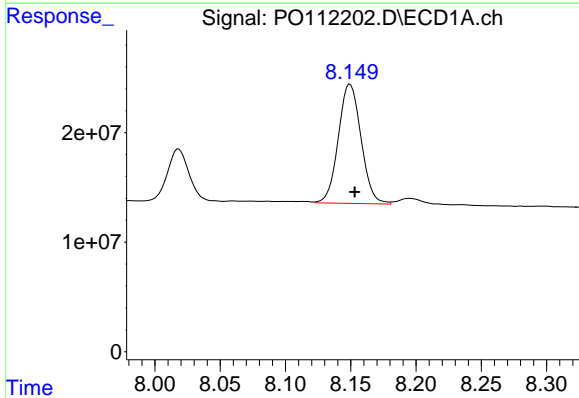
R.T.: 7.653 min
 Delta R.T.: -0.004 min
 Response: 390673925
 Conc: 364.63 ng/ml

Instrument :
 ECD_O
 ClientSampleId :
 AR1660CCC500



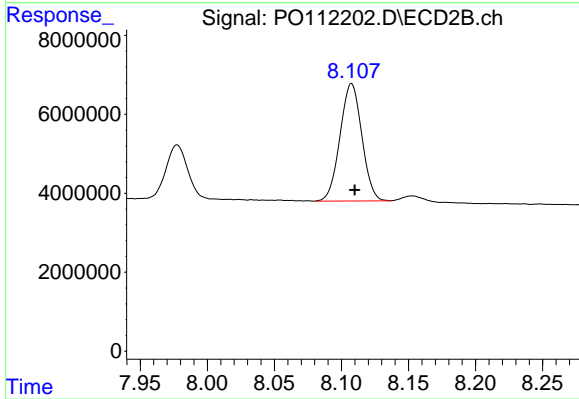
#39 AR-1262-4

R.T.: 7.614 min
 Delta R.T.: -0.004 min
 Response: 118757847
 Conc: 408.22 ng/ml



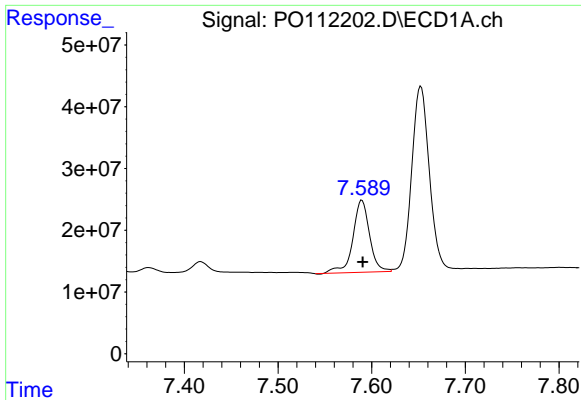
#40 AR-1262-5

R.T.: 8.150 min
 Delta R.T.: -0.003 min
 Response: 131931193
 Conc: 294.40 ng/ml



#40 AR-1262-5

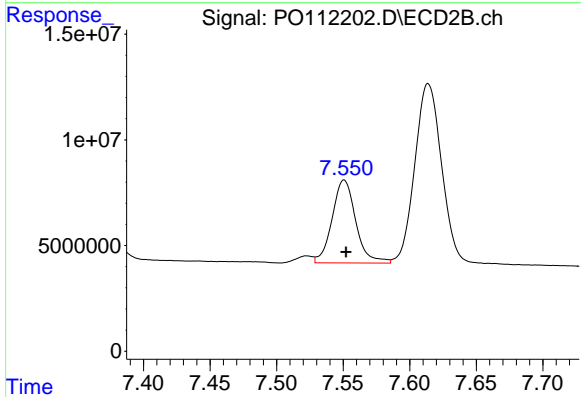
R.T.: 8.108 min
 Delta R.T.: -0.002 min
 Response: 33596075
 Conc: 317.59 ng/ml



#41 AR-1268-1

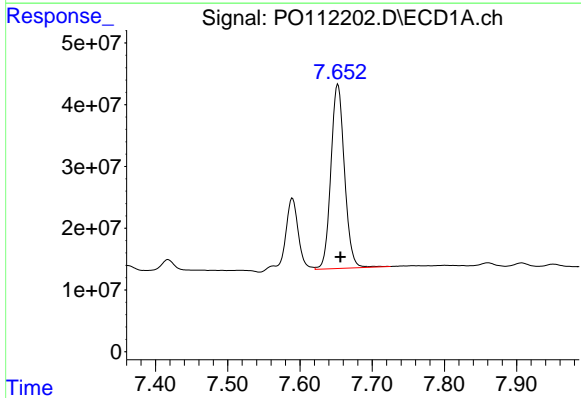
R.T.: 7.590 min
 Delta R.T.: 0.000 min
 Response: 145035025
 Conc: 78.93 ng/ml

Instrument :
 ECD_O
 ClientSampleId :
 AR1660CCC500



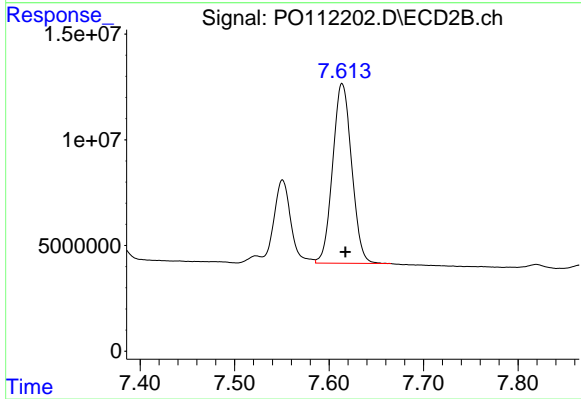
#41 AR-1268-1

R.T.: 7.551 min
 Delta R.T.: -0.001 min
 Response: 48611180
 Conc: 98.91 ng/ml



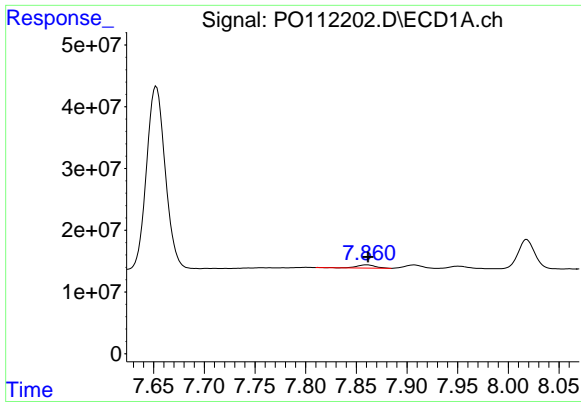
#42 AR-1268-2

R.T.: 7.653 min
 Delta R.T.: -0.004 min
 Response: 390673925
 Conc: 250.82 ng/ml



#42 AR-1268-2

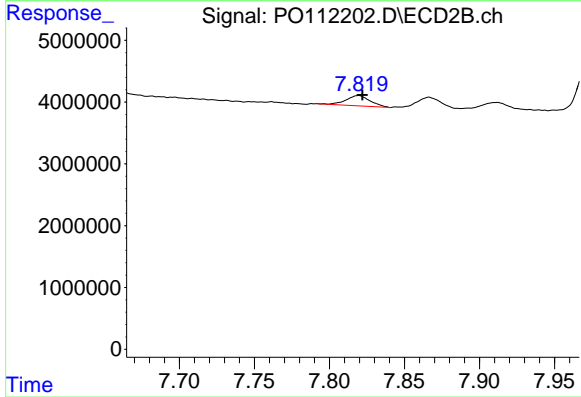
R.T.: 7.614 min
 Delta R.T.: -0.003 min
 Response: 118757847
 Conc: 284.66 ng/ml



#43 AR-1268-3

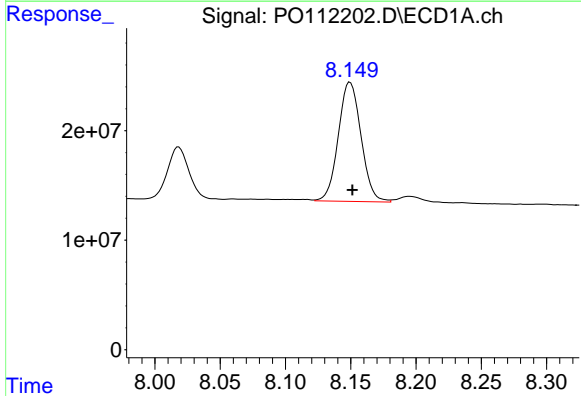
R.T.: 7.860 min
 Delta R.T.: -0.001 min
 Response: 6570931
 Conc: 5.06 ng/ml

Instrument :
 ECD_O
 ClientSampleId :
 AR1660CCC500



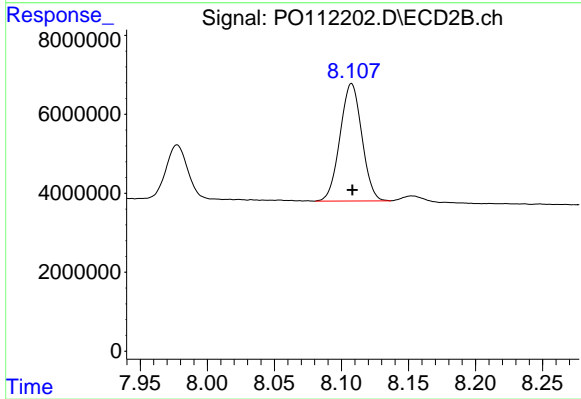
#43 AR-1268-3

R.T.: 7.819 min
 Delta R.T.: -0.002 min
 Response: 1887892
 Conc: 5.97 ng/ml



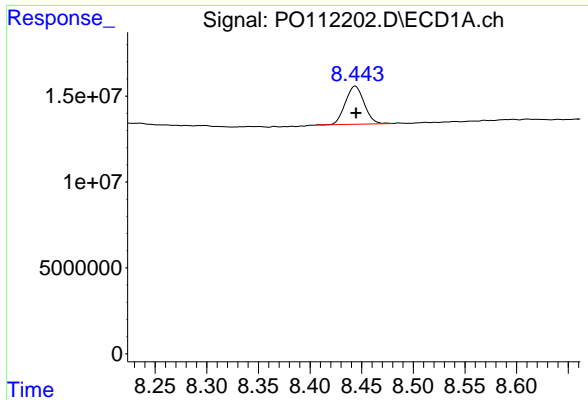
#44 AR-1268-4

R.T.: 8.150 min
 Delta R.T.: -0.002 min
 Response: 131931193
 Conc: 274.62 ng/ml



#44 AR-1268-4

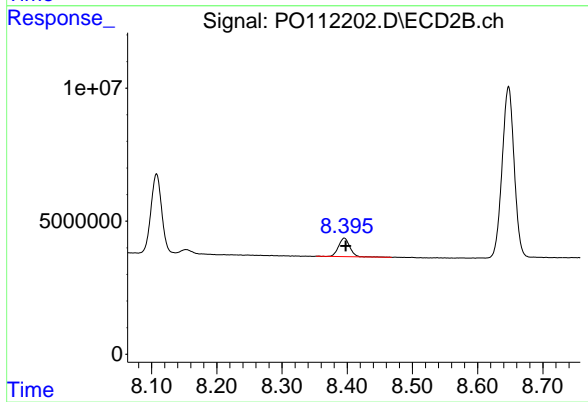
R.T.: 8.108 min
 Delta R.T.: 0.000 min
 Response: 33596075
 Conc: 301.28 ng/ml



#45 AR-1268-5

R.T.: 8.444 min
 Delta R.T.: 0.000 min
 Response: 28292165
 Conc: 8.67 ng/ml

Instrument :
 ECD_O
 ClientSampleId :
 AR1660CCC500



#45 AR-1268-5

R.T.: 8.396 min
 Delta R.T.: -0.002 min
 Response: 8385974
 Conc: 11.54 ng/ml