

Data Path : Z:\pestpcbsrv\HPCHEM1\ECD_O\Data\P0071025\
 Data File : PO112203.D
 Signal(s) : Signal #1: ECD1A.ch Signal #2: ECD2B.ch
 Acq On : 10 Jul 2025 21:24
 Operator : YP/AJ
 Sample : AR1242CCC500
 Misc :
 ALS Vial : 4 Sample Multiplier: 1

Instrument :
 ECD_O
 ClientSampleId :
 AR1242CCC500

Integration File signal 1: autoint1.e
 Integration File signal 2: autoint2.e
 Quant Time: Jul 10 22:57:49 2025
 Quant Method : Z:\pestpcbsrv\HPCHEM1\ECD_O\methods\P0070825.M
 Quant Title : GC EXTRACTABLES
 QLast Update : Wed Jul 09 10:50:50 2025
 Response via : Initial Calibration
 Integrator: ChemStation

Volume Inj. : 2 µl
 Signal #1 Phase : ZB-MR1 Signal #2 Phase: ZB-MR2
 Signal #1 Info : 30Mx0.32mmx 0.50µ Signal #2 Info : 30M x 0.32mm x 0.25µm

Compound	RT#1	RT#2	Resp#1	Resp#2	ng/ml	ng/ml
System Monitoring Compounds						
1) SA Tetrachlo...	3.670	3.665	524.1E6	320.7E6	52.969	50.343
2) SA Decachlor...	8.699	8.647	317.7E6	84200663	46.469	48.856
Target Compounds						
3) L1 AR-1016-1	4.757	4.759	147.9E6	136.1E6	434.794	610.875 #
4) L1 AR-1016-2	4.776	4.791	220.6E6	9795744	443.604	29.765 #
5) L1 AR-1016-3	4.833	4.935	139.1E6	70918704	429.706	417.496
6) L1 AR-1016-4	4.953	4.977	113.1E6	52372234	440.436	381.645
7) L1 AR-1016-5	5.210	5.189	133.5E6	78756539	487.688	456.691
8) L2 AR-1221-1	3.881	3.873	14036623	10041847	120.368	122.023
9) L2 AR-1221-2	3.969	3.960	20878255	14715895	264.816	247.936
10) L2 AR-1221-3	4.044	4.034	77734553	52850717	288.352	279.964
11) L3 AR-1232-1	4.044	4.034	77734553	52850717	362.116	352.105
12) L3 AR-1232-2	4.536	4.759	110.0E6	136.1E6	967.894	889.201
13) L3 AR-1232-3	4.776	4.935	220.6E6	70918704	963.285	939.246
14) L3 AR-1232-4	4.953	5.019	113.1E6	68154853	989.564	1032.834
15) L3 AR-1232-5	4.996	5.189	77636088	78756539	1057.709	1060.552
16) L4 AR-1242-1	4.757	4.741	147.9E6	93589942	510.582	482.775
17) L4 AR-1242-2	4.776	4.759	220.6E6	136.1E6	517.940	480.405
18) L4 AR-1242-3	4.833	4.935	139.1E6	70918704	508.255	486.821
19) L4 AR-1242-4	4.953	5.019	113.1E6	68154853	501.974	480.503
20) L4 AR-1242-5	5.605	5.539	124.6E6	92736136	588.419	510.285
21) L5 AR-1248-1	4.757	4.741	147.9E6	93589942	651.757	606.277
22) L5 AR-1248-2	4.996	4.977	77636088	52372234	251.799	254.521
23) L5 AR-1248-3	5.210	5.019	133.5E6	68154853	327.658	317.297
24) L5 AR-1248-4	5.563	5.189	153.6E6	78756539	266.213	304.400
25) L5 AR-1248-5	5.605	5.579	124.6E6	78802958	319.113	314.521
26) L6 AR-1254-1	5.563	5.539	153.6E6	92736136	249.782	243.294
27) L6 AR-1254-2	5.713	5.687	43750563	31672617	81.672	95.454
28) L6 AR-1254-3	6.117	6.087	41830283	30183603	49.823	62.616 #
29) L6 AR-1254-4	6.346	6.316	36435029	21173423	75.746	81.219
30) L6 AR-1254-5	6.764	6.732	23243511	5930609	30.032	16.642 #
31) L7 AR-1260-1	6.261	6.231	13943012	11078715	27.817	39.488 #
32) L7 AR-1260-2	6.435	6.407	4959400	2289760	6.719	6.735
33) L7 AR-1260-3	6.837	6.557	4863066	2511794	7.419	9.114
34) L7 AR-1260-4	7.073	7.063	2692254	2416442	6.186	12.043 #
35) L7 AR-1260-5	7.281	7.296	2265871	360710	1.795	0.806 #
36) L8 AR-1262-1	6.837	6.806	4863066	1324423	4.760	3.252 #
37) L8 AR-1262-2	7.281	7.296	2265871	360710	1.382	0.704 #
38) L8 AR-1262-3	7.597	7.564	7131017	5568018	11.108	31.015 #
39) L8 AR-1262-4	7.648	7.564f	2267340	5568018	2.116	19.139 #
40) L8 AR-1262-5	8.165	8.116	2177546	25922	4.859	0.245 #
41) L9 AR-1268-1	7.597	7.564	7131017	5568018	3.881	11.330 #

Data Path : Z:\pestpcbsrv\HPCHEM1\ECD_0\Data\P0071025\
 Data File : P0112203.D
 Signal(s) : Signal #1: ECD1A.ch Signal #2: ECD2B.ch
 Acq On : 10 Jul 2025 21:24
 Operator : YP/AJ
 Sample : AR1242CCC500
 Misc :
 ALS Vial : 4 Sample Multiplier: 1

Instrument :
 ECD_0
 ClientSampleId :
 AR1242CCC500

Integration File signal 1: autoint1.e
 Integration File signal 2: autoint2.e
 Quant Time: Jul 10 22:57:49 2025
 Quant Method : Z:\pestpcbsrv\HPCHEM1\ECD_0\methods\P0070825.M
 Quant Title : GC EXTRACTABLES
 QLast Update : Wed Jul 09 10:50:50 2025
 Response via : Initial Calibration
 Integrator: ChemStation

Volume Inj. : 2 µl
 Signal #1 Phase : ZB-MR1 Signal #2 Phase: ZB-MR2
 Signal #1 Info : 30Mx0.32mmx 0.50µ Signal #2 Info : 30M x 0.32mm x 0.25µm

	Compound	RT#1	RT#2	Resp#1	Resp#2	ng/ml	ng/ml
42)	L9 AR-1268-2	7.648	7.564f	2267340	5568018	1.456	13.347 #
43)	L9 AR-1268-3	7.861	7.820	1417924	286919	1.091	0.907
44)	L9 AR-1268-4	8.165	8.116	2177546	25922	4.533	0.232 #
45)	L9 AR-1268-5	8.442	8.393	2351300	580134	0.720	0.799

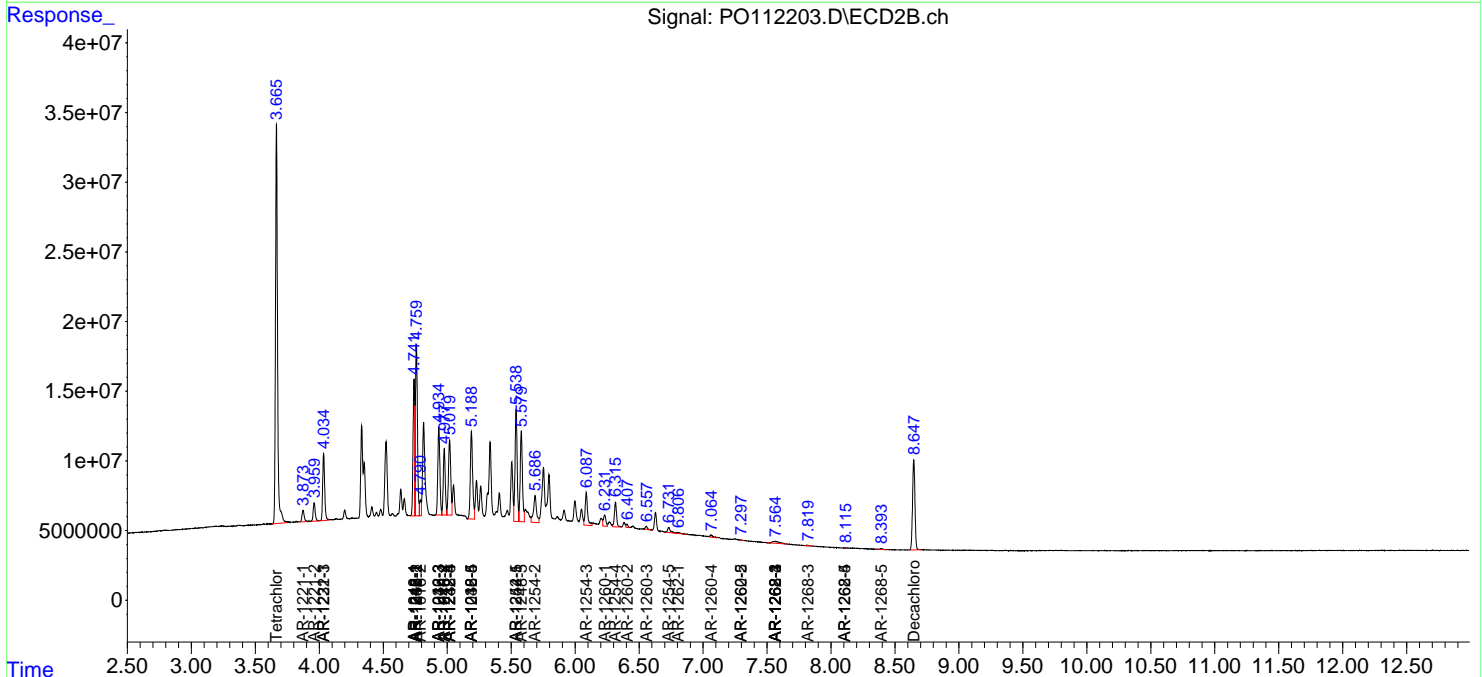
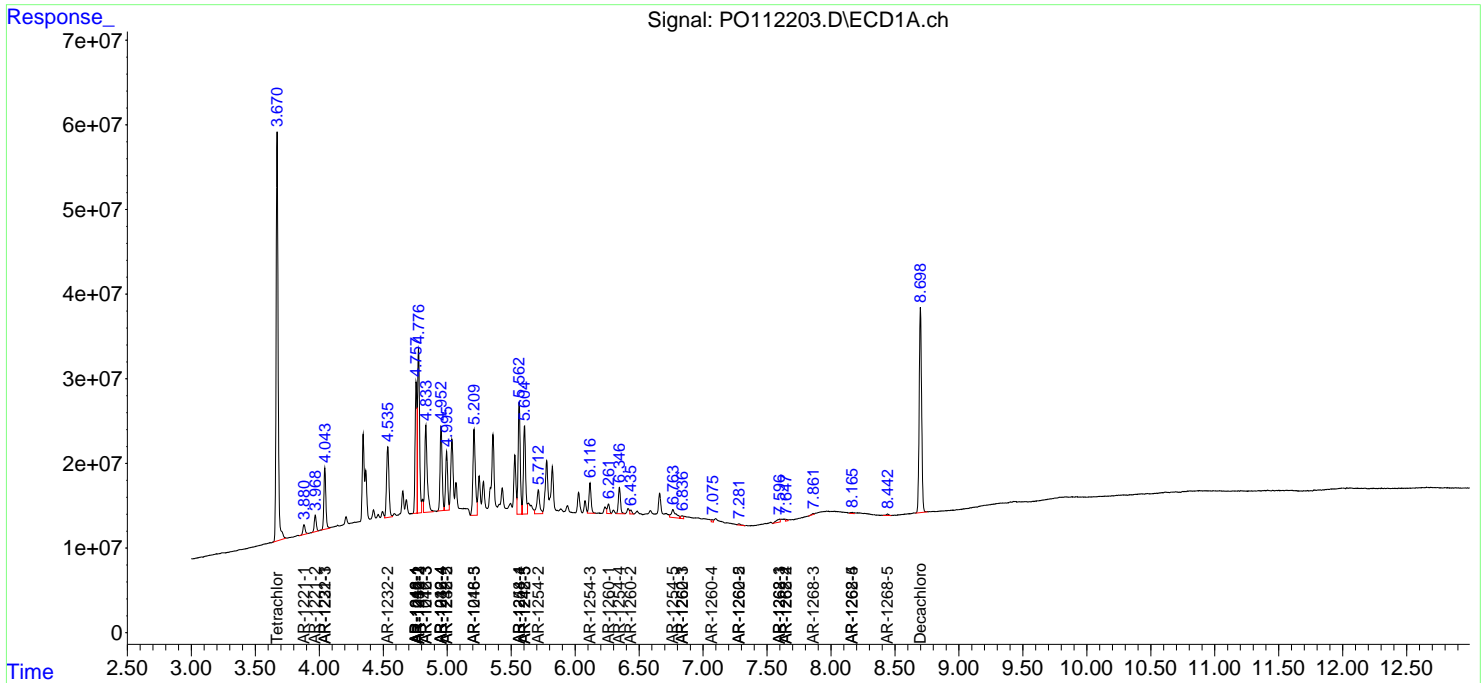
(f)=RT Delta > 1/2 Window (#)=Amounts differ by > 25% (m)=manual int.

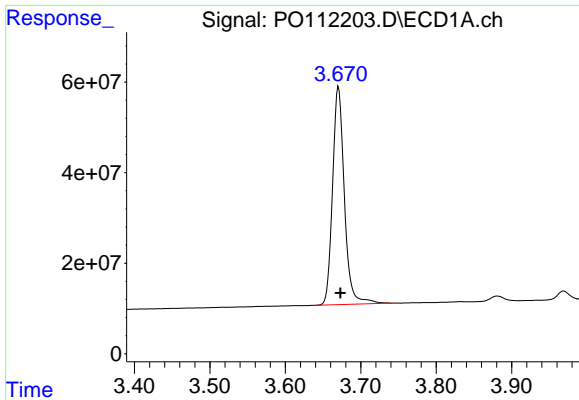
Data Path : Z:\pestpcbsrv\HPCHEM1\ECD_O\Data\P0071025\
 Data File : P0112203.D
 Signal(s) : Signal #1: ECD1A.ch Signal #2: ECD2B.ch
 Acq On : 10 Jul 2025 21:24
 Operator : YP/AJ
 Sample : AR1242CCC500
 Misc :
 ALS Vial : 4 Sample Multiplier: 1

Instrument :
 ECD_O
 ClientSampleId :
 AR1242CCC500

Integration File signal 1: autoint1.e
 Integration File signal 2: autoint2.e
 Quant Time: Jul 10 22:57:49 2025
 Quant Method : Z:\pestpcbsrv\HPCHEM1\ECD_O\methods\P0070825.M
 Quant Title : GC EXTRACTABLES
 QLast Update : Wed Jul 09 10:50:50 2025
 Response via : Initial Calibration
 Integrator: ChemStation

Volume Inj. : 2 µl
 Signal #1 Phase : ZB-MR1 Signal #2 Phase: ZB-MR2
 Signal #1 Info : 30Mx0.32mmx 0.50µ Signal #2 Info : 30M x 0.32mm x 0.25µm

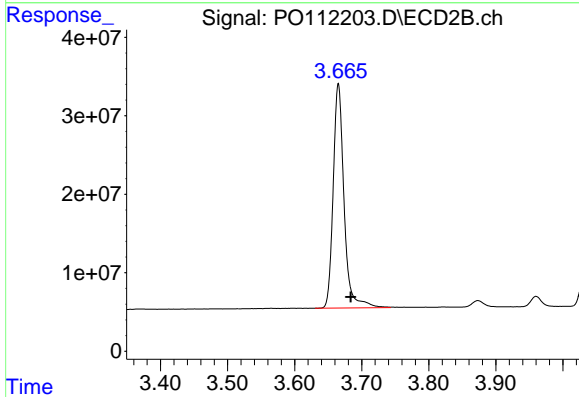




#1 Tetrachloro-m-xylene

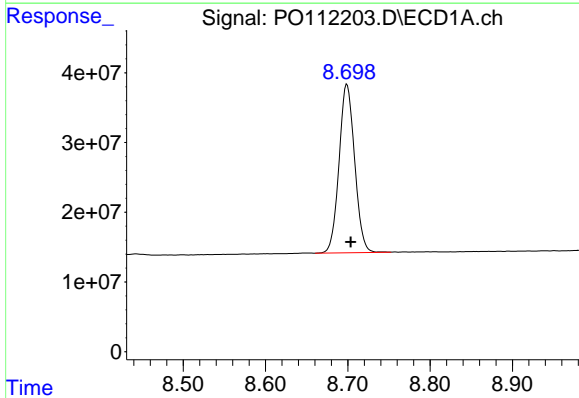
R.T.: 3.670 min
Delta R.T.: -0.003 min
Response: 524111309
Conc: 52.97 ng/ml

Instrument :
ECD_O
ClientSampleId :
AR1242CCC500



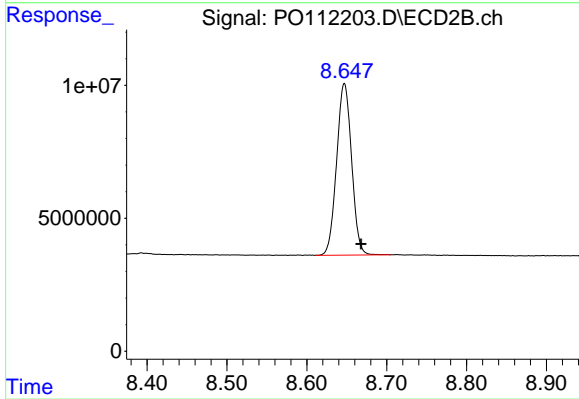
#1 Tetrachloro-m-xylene

R.T.: 3.665 min
Delta R.T.: -0.018 min
Response: 320739328
Conc: 50.34 ng/ml



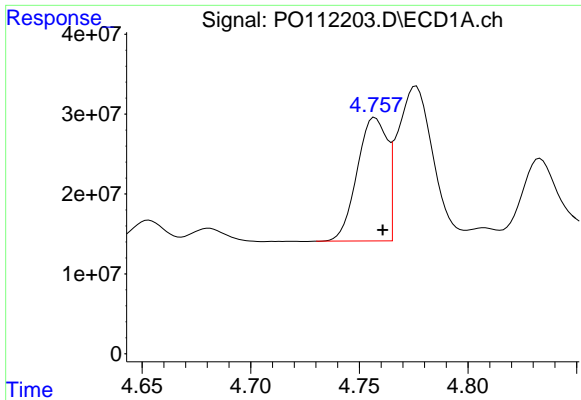
#2 Decachlorobiphenyl

R.T.: 8.699 min
Delta R.T.: -0.004 min
Response: 317709639
Conc: 46.47 ng/ml



#2 Decachlorobiphenyl

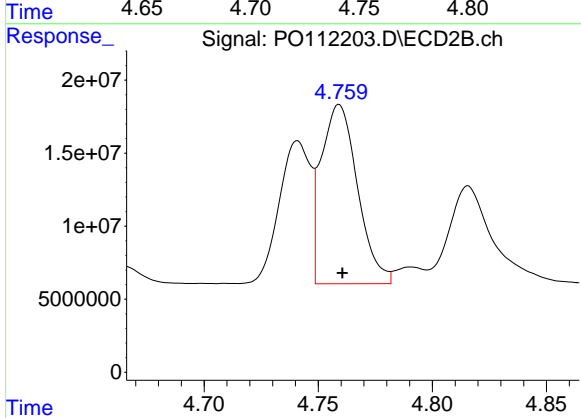
R.T.: 8.647 min
Delta R.T.: -0.021 min
Response: 84200663
Conc: 48.86 ng/ml



#3 AR-1016-1

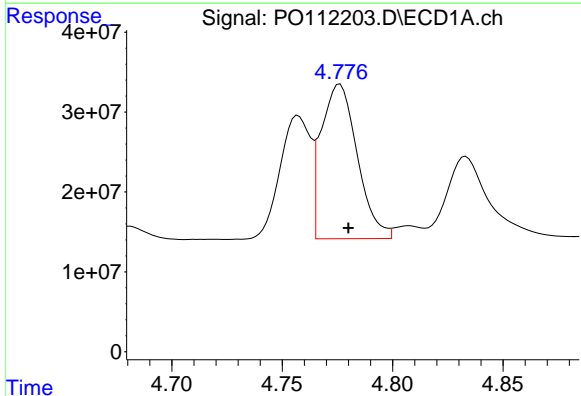
R.T.: 4.757 min
 Delta R.T.: -0.004 min
 Response: 147883360
 Conc: 434.79 ng/ml

Instrument :
 ECD_O
 ClientSampleId :
 AR1242CCC500



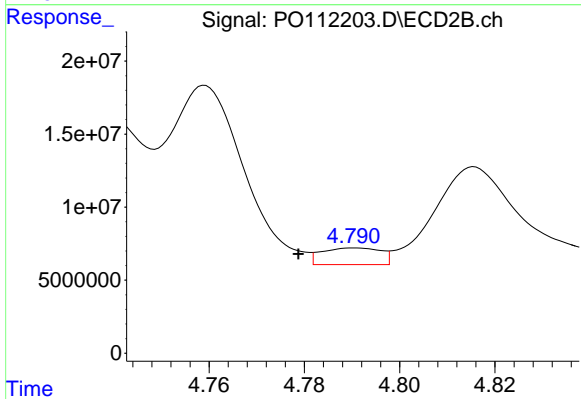
#3 AR-1016-1

R.T.: 4.759 min
 Delta R.T.: -0.001 min
 Response: 136123964
 Conc: 610.88 ng/ml



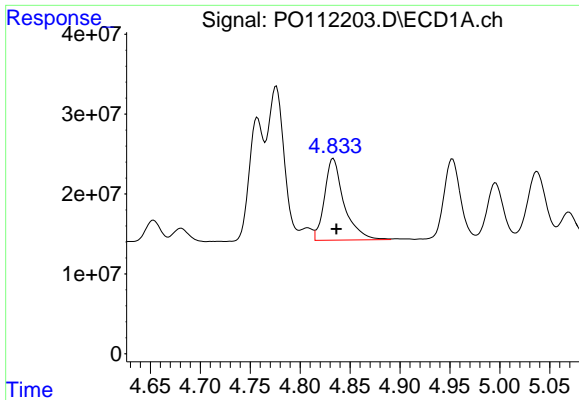
#4 AR-1016-2

R.T.: 4.776 min
 Delta R.T.: -0.004 min
 Response: 220600756
 Conc: 443.60 ng/ml



#4 AR-1016-2

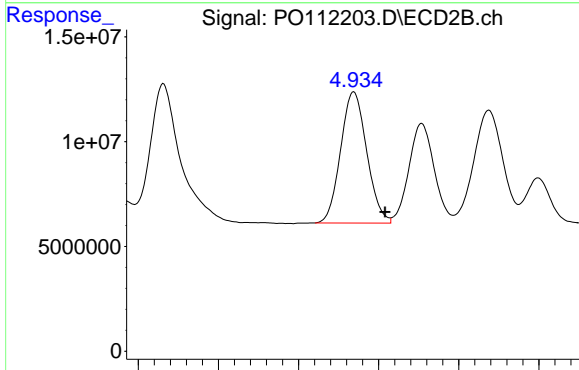
R.T.: 4.791 min
 Delta R.T.: 0.012 min
 Response: 9795744
 Conc: 29.77 ng/ml



#5 AR-1016-3

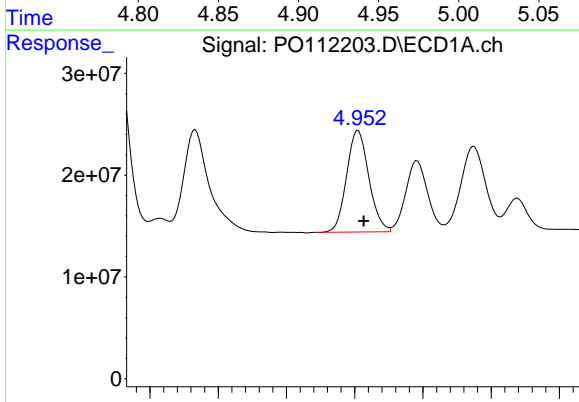
R.T.: 4.833 min
 Delta R.T.: -0.003 min
 Response: 139101982
 Conc: 429.71 ng/ml

Instrument :
 ECD_O
 ClientSampleId :
 AR1242CCC500



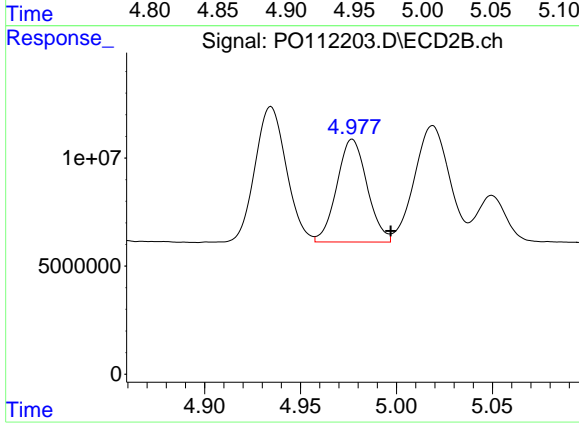
#5 AR-1016-3

R.T.: 4.935 min
 Delta R.T.: -0.019 min
 Response: 70918704
 Conc: 417.50 ng/ml



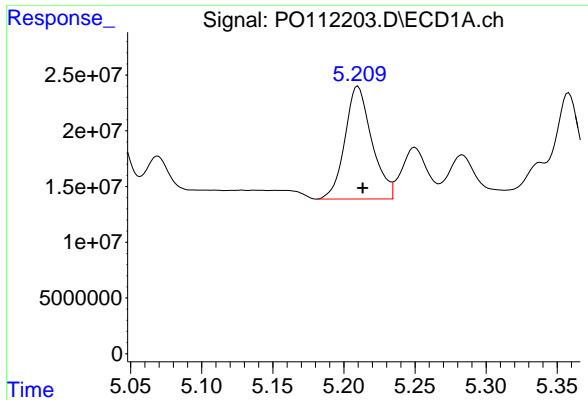
#6 AR-1016-4

R.T.: 4.953 min
 Delta R.T.: -0.004 min
 Response: 113103897
 Conc: 440.44 ng/ml



#6 AR-1016-4

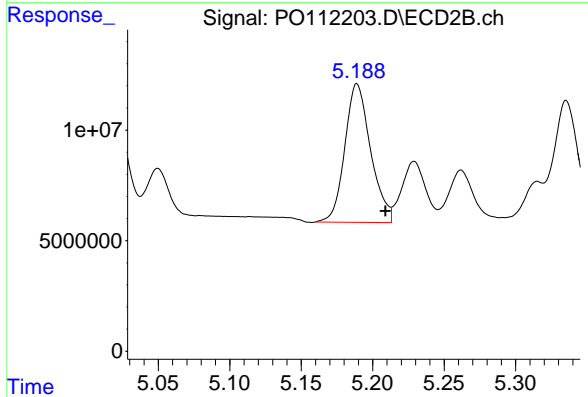
R.T.: 4.977 min
 Delta R.T.: -0.020 min
 Response: 52372234
 Conc: 381.65 ng/ml



#7 AR-1016-5

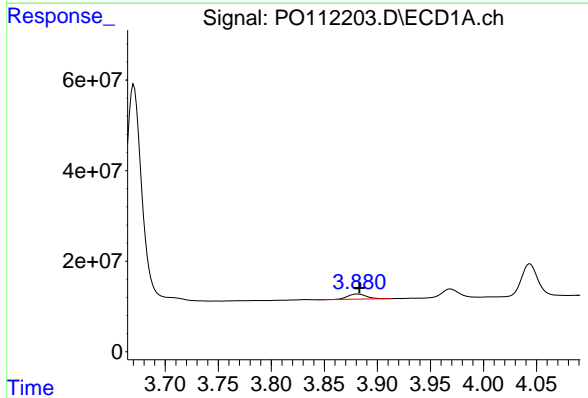
R.T.: 5.210 min
 Delta R.T.: -0.003 min
 Response: 133461591
 Conc: 487.69 ng/ml

Instrument :
 ECD_O
 ClientSampleId :
 AR1242CCC500



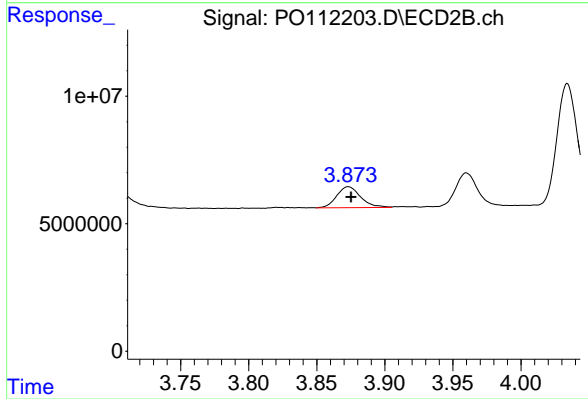
#7 AR-1016-5

R.T.: 5.189 min
 Delta R.T.: -0.020 min
 Response: 78756539
 Conc: 456.69 ng/ml



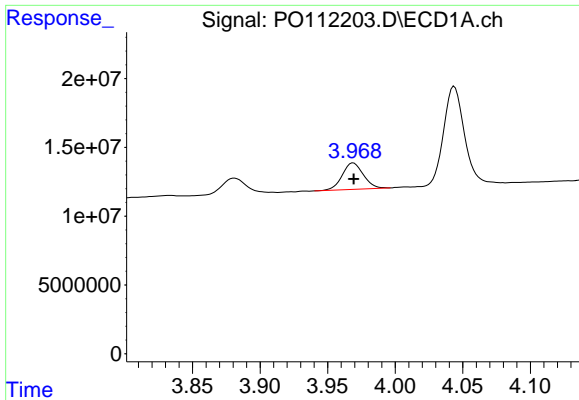
#8 AR-1221-1

R.T.: 3.881 min
 Delta R.T.: -0.002 min
 Response: 14036623
 Conc: 120.37 ng/ml



#8 AR-1221-1

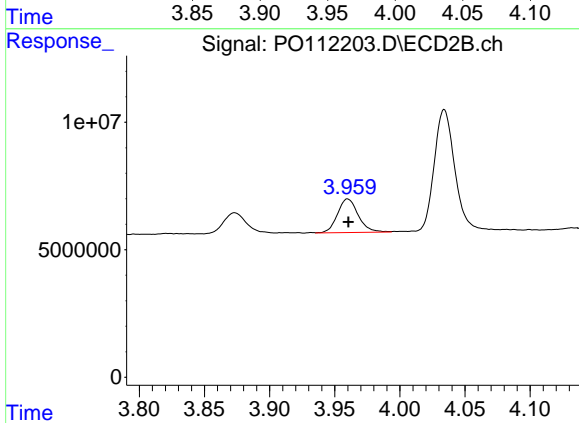
R.T.: 3.873 min
 Delta R.T.: -0.002 min
 Response: 10041847
 Conc: 122.02 ng/ml



#9 AR-1221-2

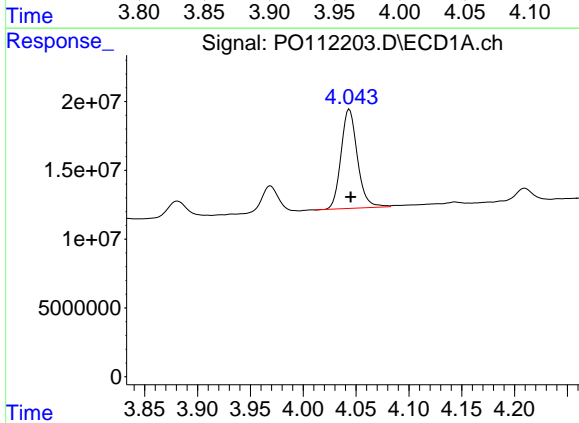
R.T.: 3.969 min
 Delta R.T.: 0.000 min
 Response: 20878255
 Conc: 264.82 ng/ml

Instrument :
 ECD_O
 ClientSampleId :
 AR1242CCC500



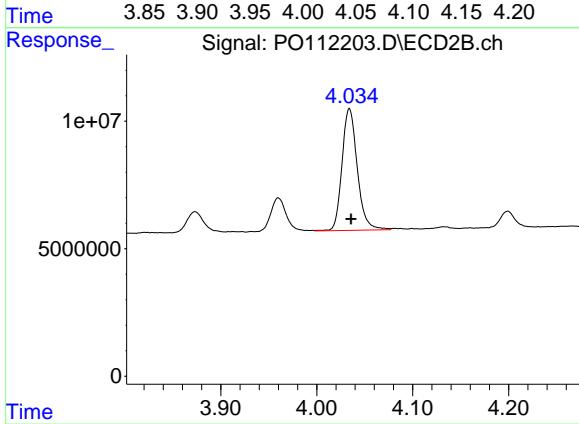
#9 AR-1221-2

R.T.: 3.960 min
 Delta R.T.: 0.000 min
 Response: 14715895
 Conc: 247.94 ng/ml



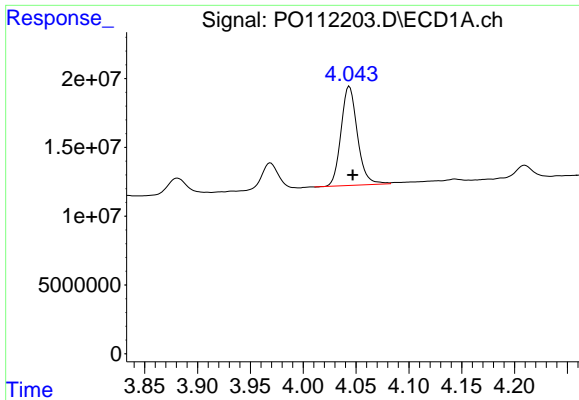
#10 AR-1221-3

R.T.: 4.044 min
 Delta R.T.: -0.001 min
 Response: 77734553
 Conc: 288.35 ng/ml



#10 AR-1221-3

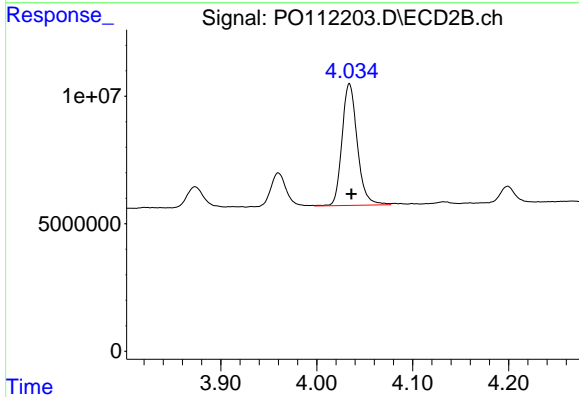
R.T.: 4.034 min
 Delta R.T.: -0.002 min
 Response: 52850717
 Conc: 279.96 ng/ml



#11 AR-1232-1

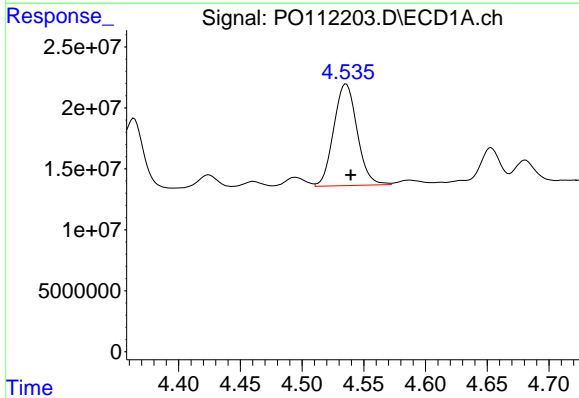
R.T.: 4.044 min
 Delta R.T.: -0.003 min
 Response: 77734553
 Conc: 362.12 ng/ml

Instrument :
 ECD_O
 ClientSampleId :
 AR1242CCC500



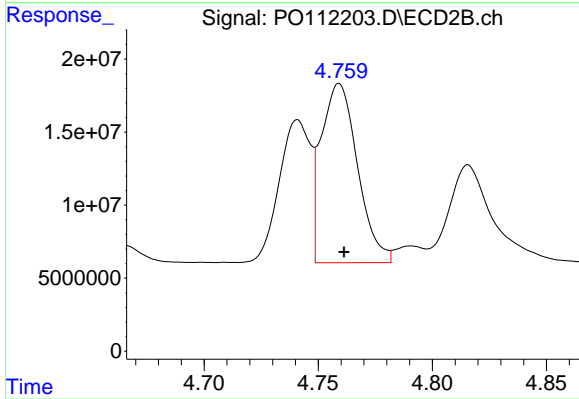
#11 AR-1232-1

R.T.: 4.034 min
 Delta R.T.: -0.002 min
 Response: 52850717
 Conc: 352.10 ng/ml



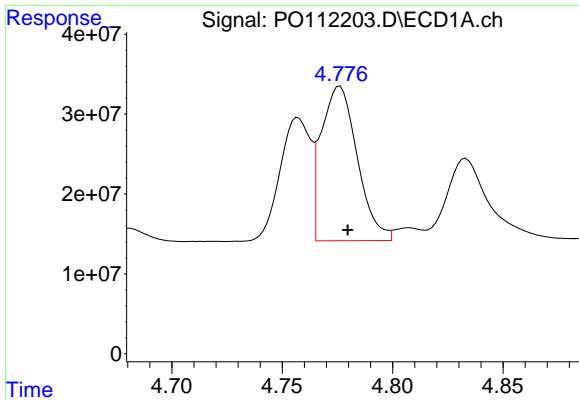
#12 AR-1232-2

R.T.: 4.536 min
 Delta R.T.: -0.004 min
 Response: 109988590
 Conc: 967.89 ng/ml



#12 AR-1232-2

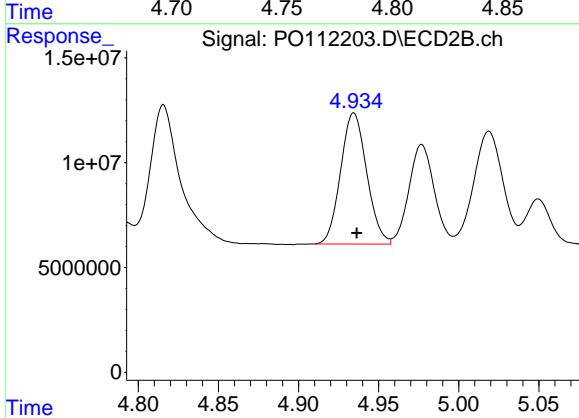
R.T.: 4.759 min
 Delta R.T.: -0.002 min
 Response: 136123964
 Conc: 889.20 ng/ml



#13 AR-1232-3

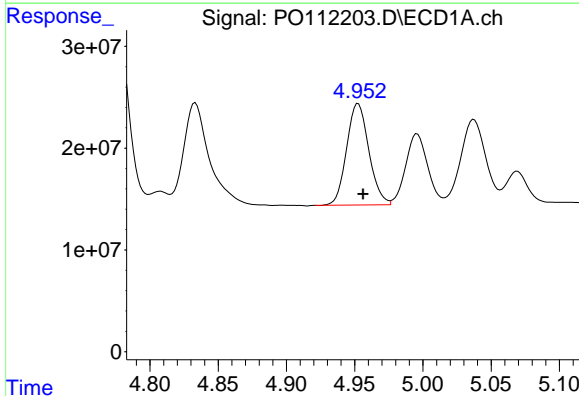
R.T.: 4.776 min
 Delta R.T.: -0.003 min
 Response: 220600756
 Conc: 963.28 ng/ml

Instrument :
 ECD_O
 ClientSampleId :
 AR1242CCC500



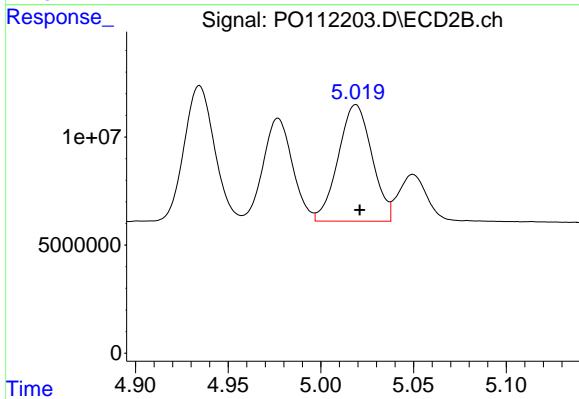
#13 AR-1232-3

R.T.: 4.935 min
 Delta R.T.: -0.002 min
 Response: 70918704
 Conc: 939.25 ng/ml



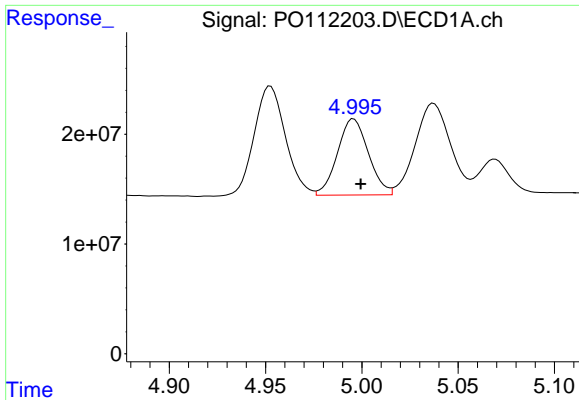
#14 AR-1232-4

R.T.: 4.953 min
 Delta R.T.: -0.004 min
 Response: 113103897
 Conc: 989.56 ng/ml



#14 AR-1232-4

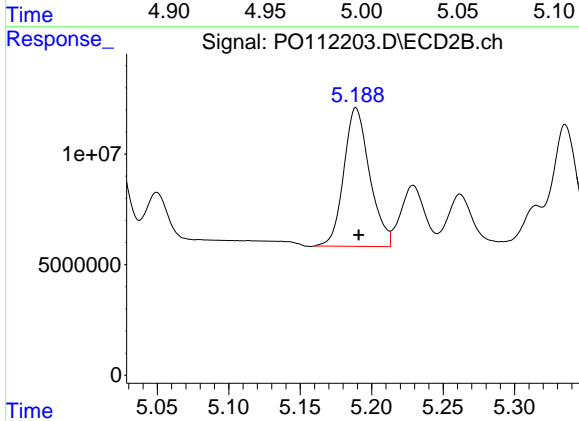
R.T.: 5.019 min
 Delta R.T.: -0.002 min
 Response: 68154853
 Conc: 1032.83 ng/ml



#15 AR-1232-5

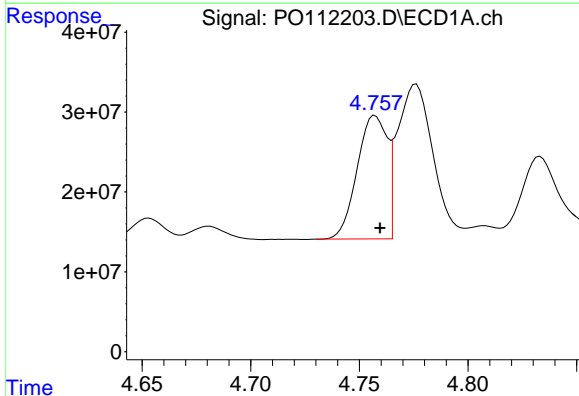
R.T.: 4.996 min
 Delta R.T.: -0.004 min
 Response: 77636088
 Conc: 1057.71 ng/ml

Instrument :
 ECD_O
 ClientSampleId :
 AR1242CCC500



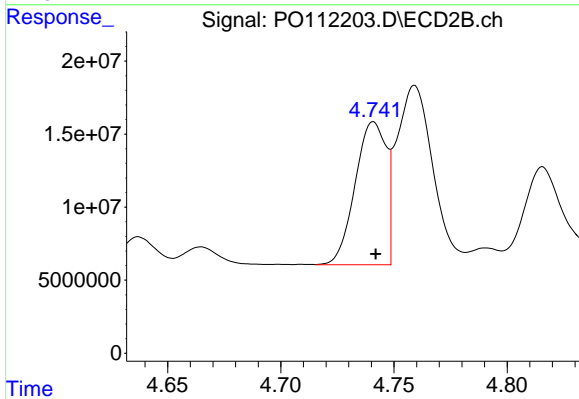
#15 AR-1232-5

R.T.: 5.189 min
 Delta R.T.: -0.002 min
 Response: 78756539
 Conc: 1060.55 ng/ml



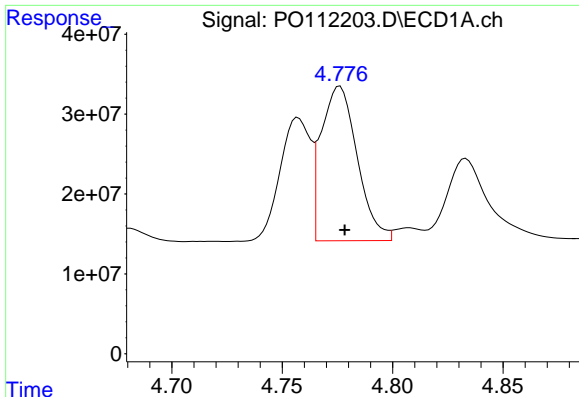
#16 AR-1242-1

R.T.: 4.757 min
 Delta R.T.: -0.002 min
 Response: 147883360
 Conc: 510.58 ng/ml



#16 AR-1242-1

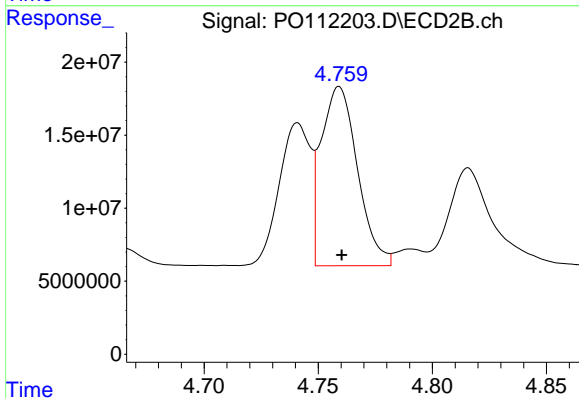
R.T.: 4.741 min
 Delta R.T.: 0.000 min
 Response: 93589942
 Conc: 482.77 ng/ml



#17 AR-1242-2

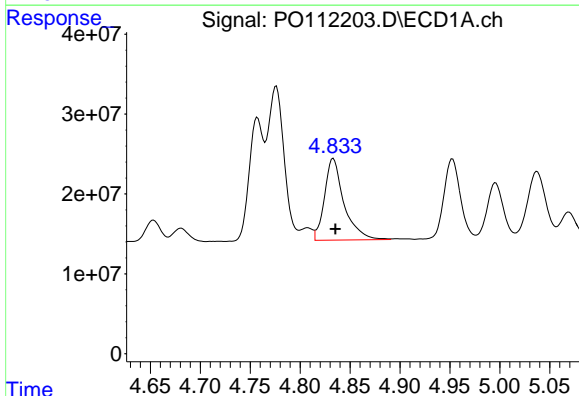
R.T.: 4.776 min
 Delta R.T.: -0.002 min
 Response: 220600756
 Conc: 517.94 ng/ml

Instrument :
 ECD_O
 ClientSampleId :
 AR1242CCC500



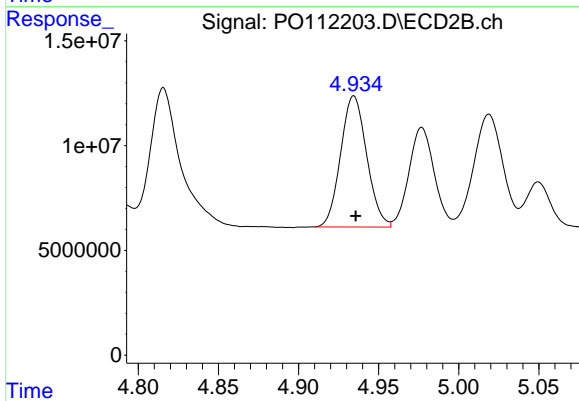
#17 AR-1242-2

R.T.: 4.759 min
 Delta R.T.: -0.001 min
 Response: 136123964
 Conc: 480.41 ng/ml



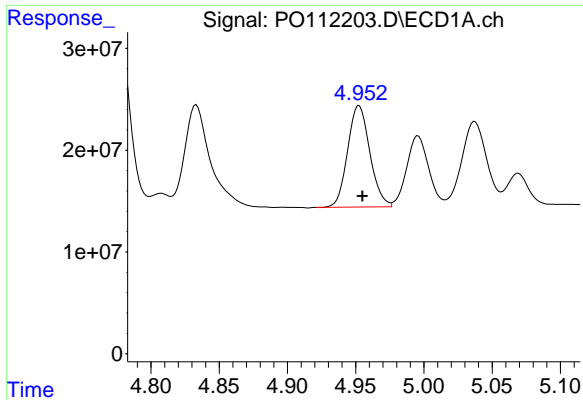
#18 AR-1242-3

R.T.: 4.833 min
 Delta R.T.: -0.002 min
 Response: 139101982
 Conc: 508.25 ng/ml



#18 AR-1242-3

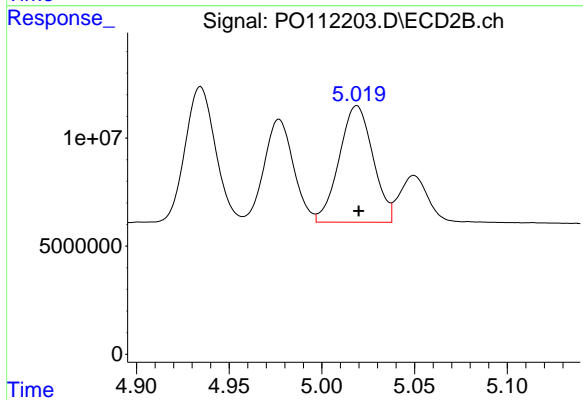
R.T.: 4.935 min
 Delta R.T.: -0.001 min
 Response: 70918704
 Conc: 486.82 ng/ml



#19 AR-1242-4

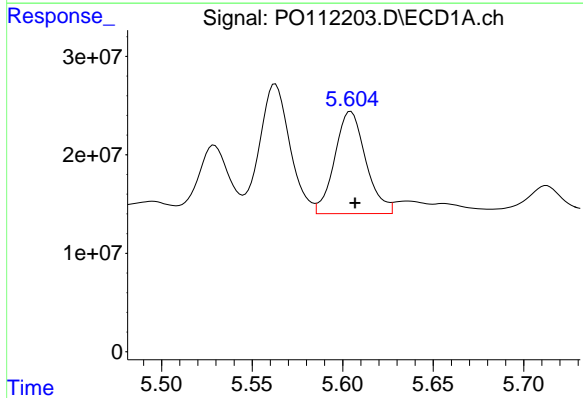
R.T.: 4.953 min
 Delta R.T.: -0.002 min
 Response: 113103897
 Conc: 501.97 ng/ml

Instrument :
 ECD_O
 ClientSampleId :
 AR1242CCC500



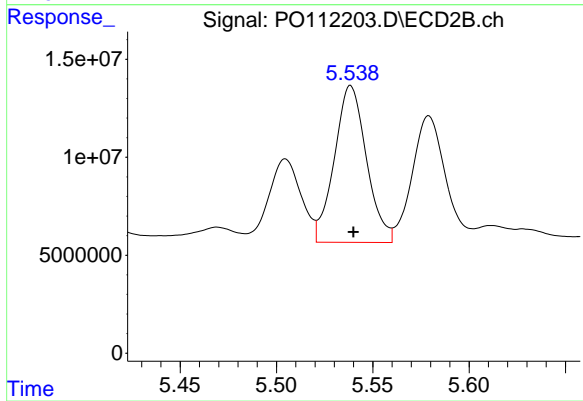
#19 AR-1242-4

R.T.: 5.019 min
 Delta R.T.: -0.001 min
 Response: 68154853
 Conc: 480.50 ng/ml



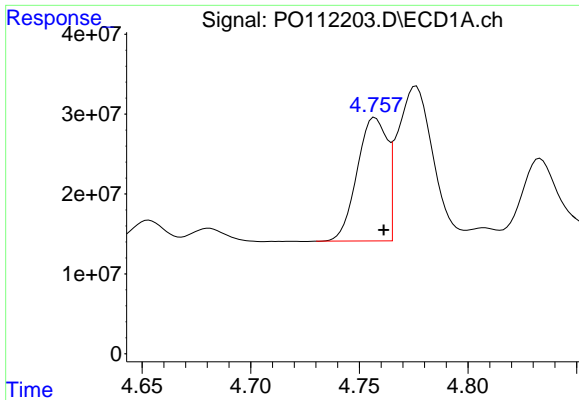
#20 AR-1242-5

R.T.: 5.605 min
 Delta R.T.: -0.002 min
 Response: 124551236
 Conc: 588.42 ng/ml



#20 AR-1242-5

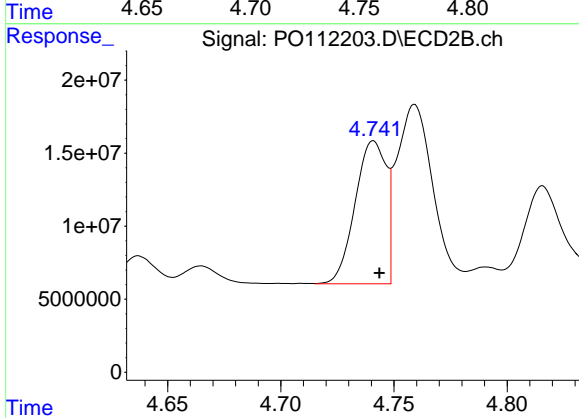
R.T.: 5.539 min
 Delta R.T.: -0.001 min
 Response: 92736136
 Conc: 510.28 ng/ml



#21 AR-1248-1

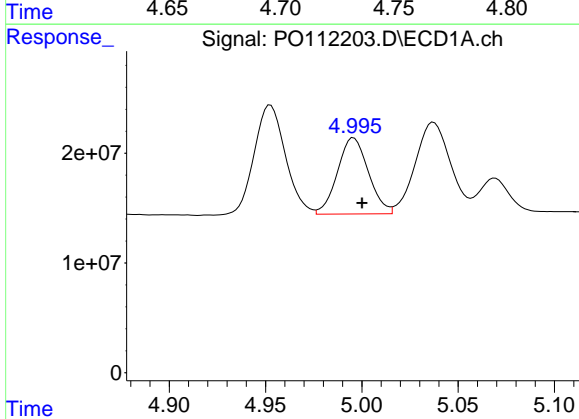
R.T.: 4.757 min
 Delta R.T.: -0.004 min
 Response: 147883360
 Conc: 651.76 ng/ml

Instrument :
 ECD_O
 ClientSampleId :
 AR1242CCC500



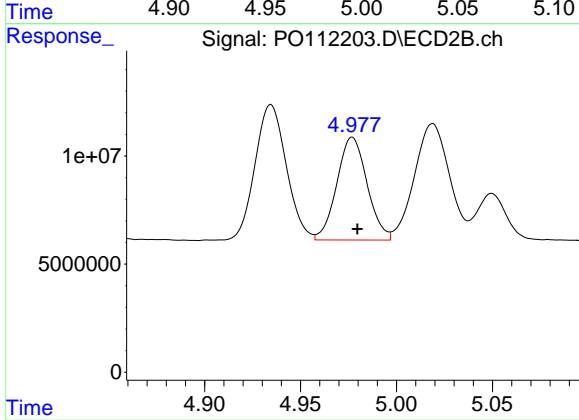
#21 AR-1248-1

R.T.: 4.741 min
 Delta R.T.: -0.003 min
 Response: 93589942
 Conc: 606.28 ng/ml



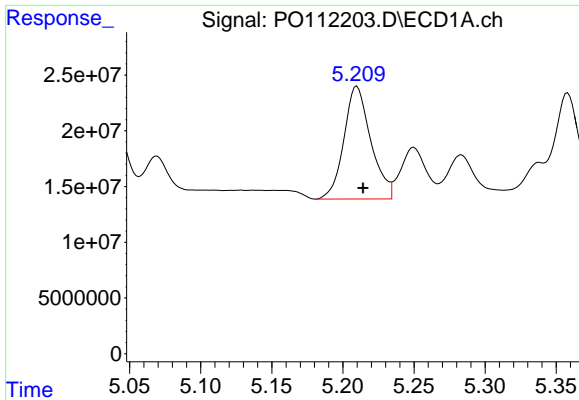
#22 AR-1248-2

R.T.: 4.996 min
 Delta R.T.: -0.004 min
 Response: 77636088
 Conc: 251.80 ng/ml



#22 AR-1248-2

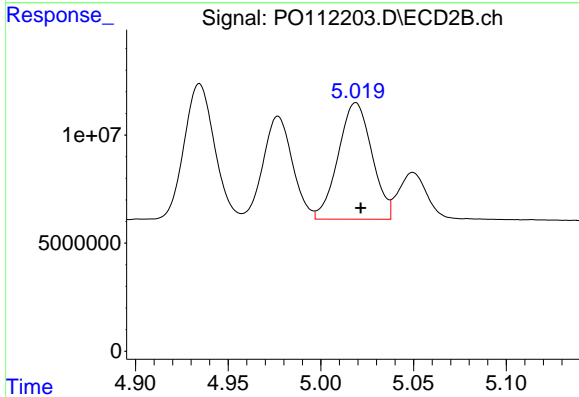
R.T.: 4.977 min
 Delta R.T.: -0.003 min
 Response: 52372234
 Conc: 254.52 ng/ml



#23 AR-1248-3

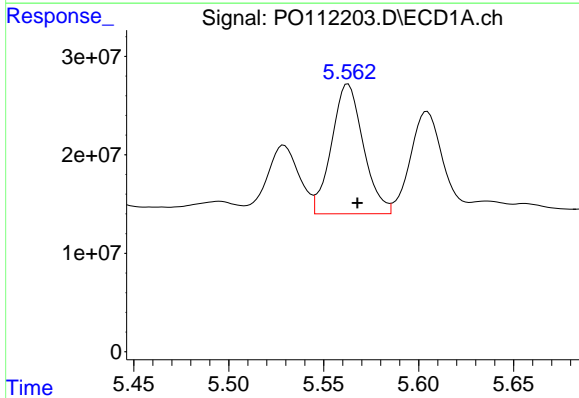
R.T.: 5.210 min
 Delta R.T.: -0.004 min
 Response: 133461591
 Conc: 327.66 ng/ml

Instrument :
 ECD_O
 ClientSampleId :
 AR1242CCC500



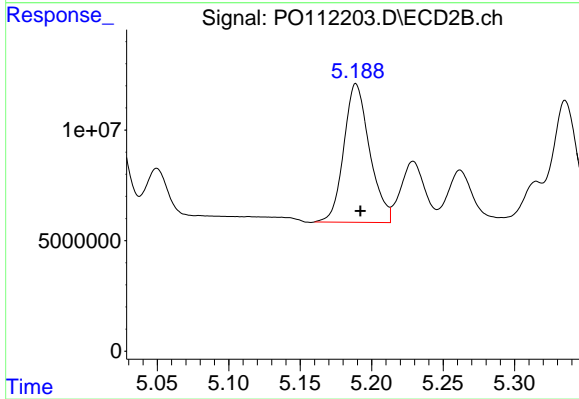
#23 AR-1248-3

R.T.: 5.019 min
 Delta R.T.: -0.003 min
 Response: 68154853
 Conc: 317.30 ng/ml



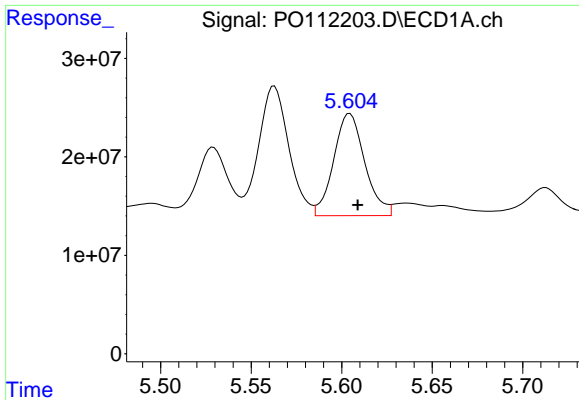
#24 AR-1248-4

R.T.: 5.563 min
 Delta R.T.: -0.005 min
 Response: 153643981
 Conc: 266.21 ng/ml



#24 AR-1248-4

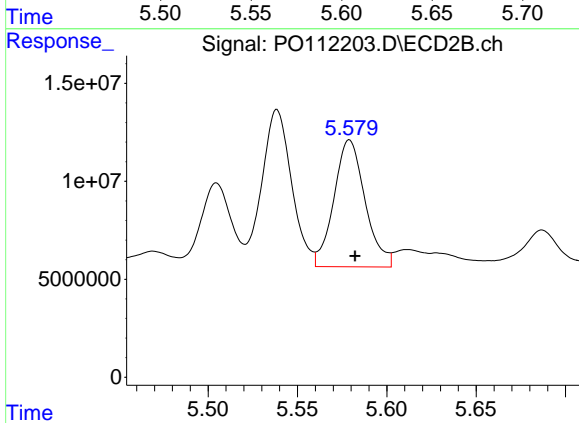
R.T.: 5.189 min
 Delta R.T.: -0.003 min
 Response: 78756539
 Conc: 304.40 ng/ml



#25 AR-1248-5

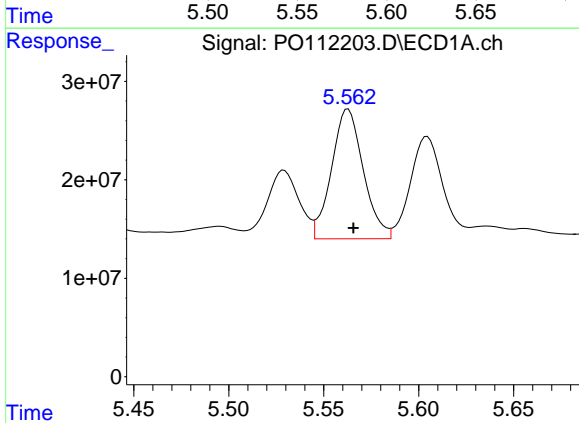
R.T.: 5.605 min
 Delta R.T.: -0.004 min
 Response: 124551236
 Conc: 319.11 ng/ml

Instrument :
 ECD_O
 ClientSampleId :
 AR1242CCC500



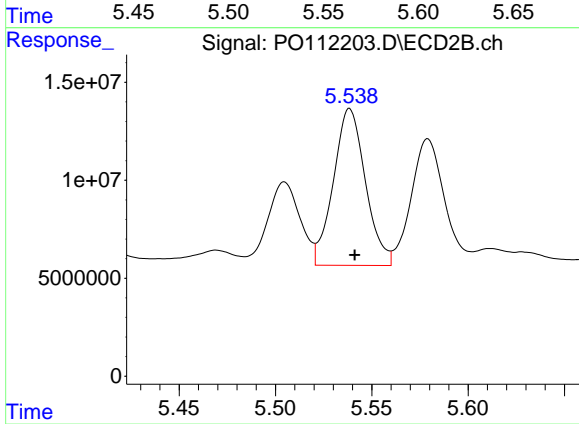
#25 AR-1248-5

R.T.: 5.579 min
 Delta R.T.: -0.003 min
 Response: 78802958
 Conc: 314.52 ng/ml



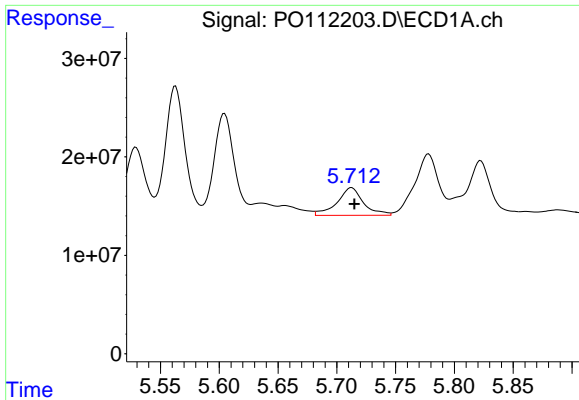
#26 AR-1254-1

R.T.: 5.563 min
 Delta R.T.: -0.003 min
 Response: 153643981
 Conc: 249.78 ng/ml



#26 AR-1254-1

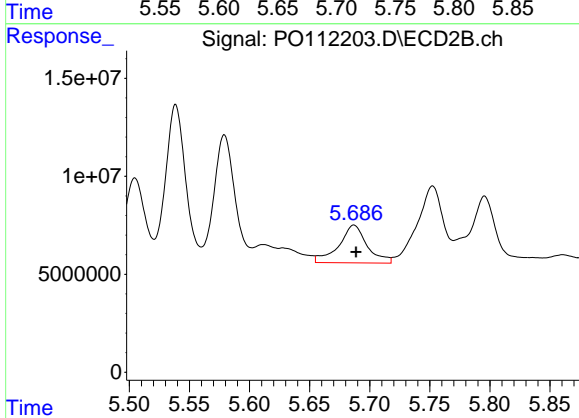
R.T.: 5.539 min
 Delta R.T.: -0.003 min
 Response: 92736136
 Conc: 243.29 ng/ml



#27 AR-1254-2

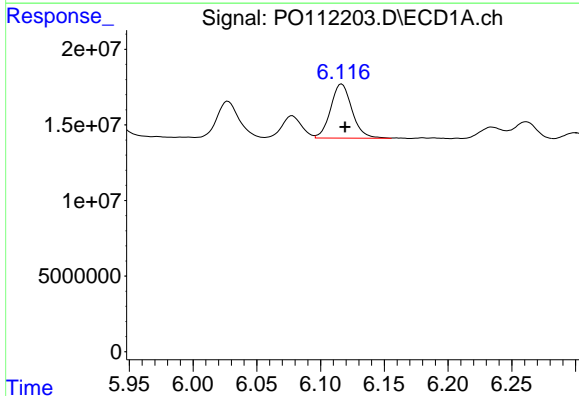
R.T.: 5.713 min
 Delta R.T.: -0.002 min
 Response: 43750563
 Conc: 81.67 ng/ml

Instrument :
 ECD_O
 ClientSampleId :
 AR1242CCC500



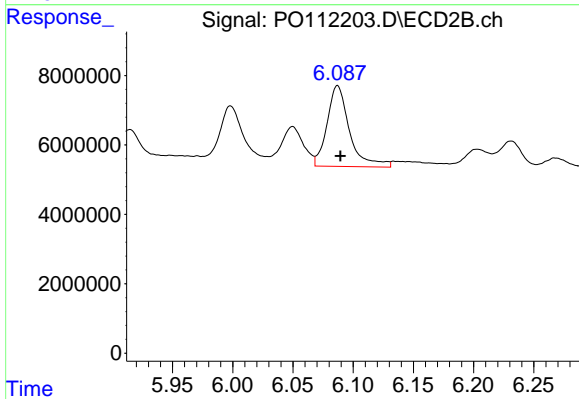
#27 AR-1254-2

R.T.: 5.687 min
 Delta R.T.: -0.002 min
 Response: 31672617
 Conc: 95.45 ng/ml



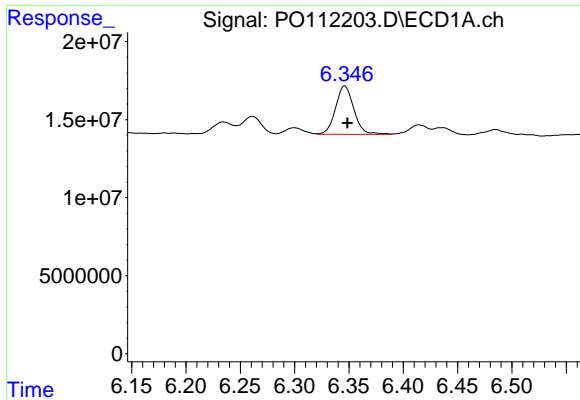
#28 AR-1254-3

R.T.: 6.117 min
 Delta R.T.: -0.003 min
 Response: 41830283
 Conc: 49.82 ng/ml



#28 AR-1254-3

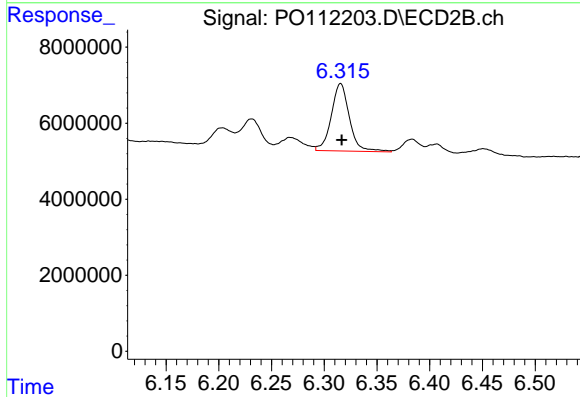
R.T.: 6.087 min
 Delta R.T.: -0.003 min
 Response: 30183603
 Conc: 62.62 ng/ml



#29 AR-1254-4

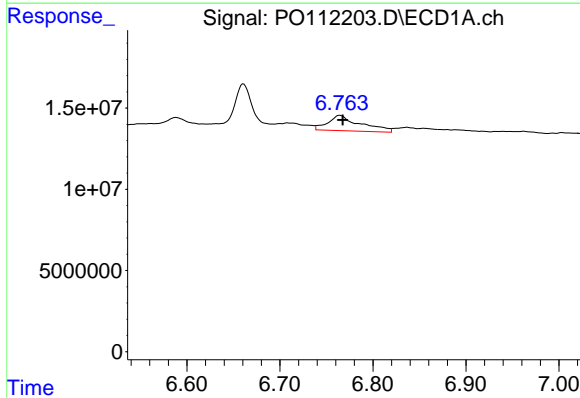
R.T.: 6.346 min
 Delta R.T.: -0.002 min
 Response: 36435029
 Conc: 75.75 ng/ml

Instrument :
 ECD_O
 ClientSampleId :
 AR1242CCC500



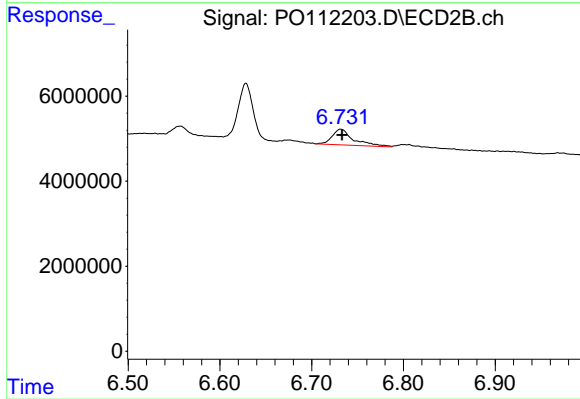
#29 AR-1254-4

R.T.: 6.316 min
 Delta R.T.: -0.001 min
 Response: 21173423
 Conc: 81.22 ng/ml



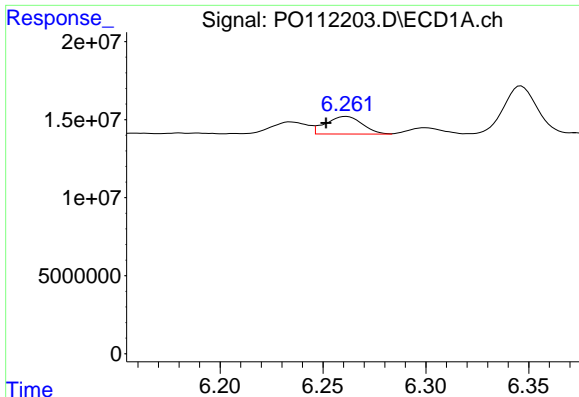
#30 AR-1254-5

R.T.: 6.764 min
 Delta R.T.: -0.003 min
 Response: 23243511
 Conc: 30.03 ng/ml



#30 AR-1254-5

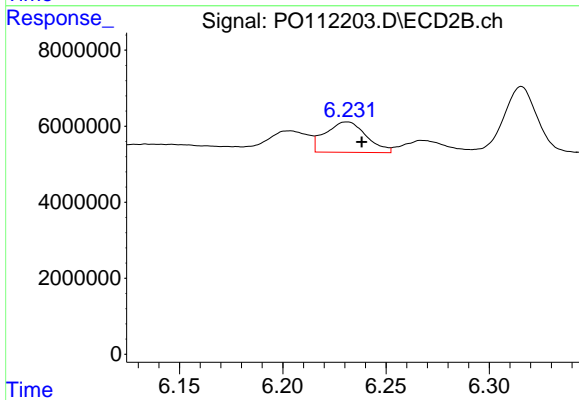
R.T.: 6.732 min
 Delta R.T.: -0.001 min
 Response: 5930609
 Conc: 16.64 ng/ml



#31 AR-1260-1

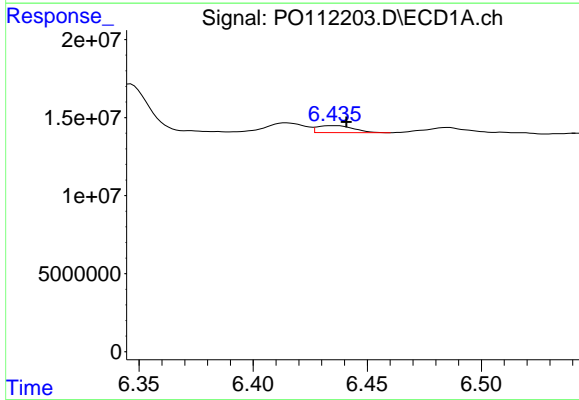
R.T.: 6.261 min
 Delta R.T.: 0.010 min
 Response: 13943012
 Conc: 27.82 ng/ml

Instrument :
 ECD_O
 ClientSampleId :
 AR1242CCC500



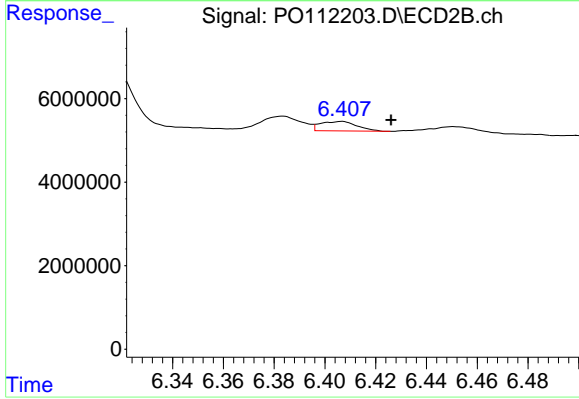
#31 AR-1260-1

R.T.: 6.231 min
 Delta R.T.: -0.007 min
 Response: 11078715
 Conc: 39.49 ng/ml



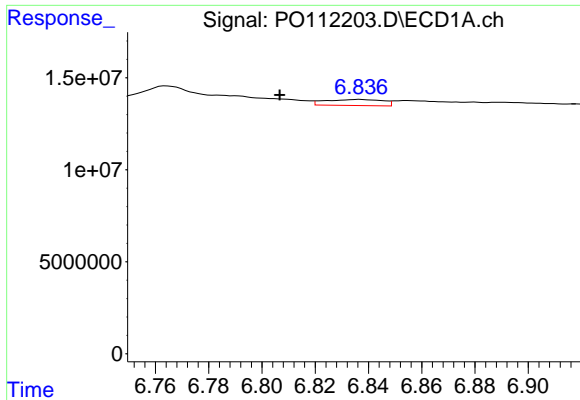
#32 AR-1260-2

R.T.: 6.435 min
 Delta R.T.: -0.005 min
 Response: 4959400
 Conc: 6.72 ng/ml



#32 AR-1260-2

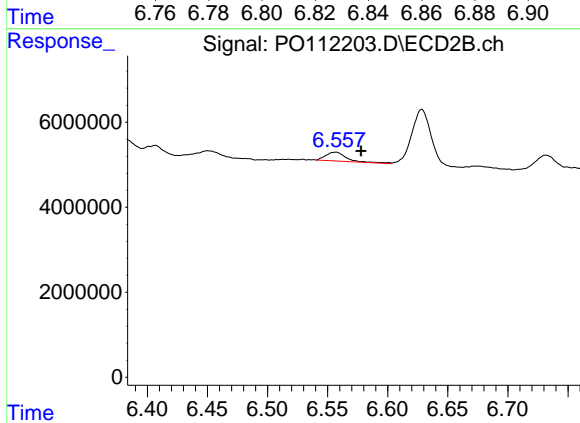
R.T.: 6.407 min
 Delta R.T.: -0.020 min
 Response: 2289760
 Conc: 6.73 ng/ml



#33 AR-1260-3

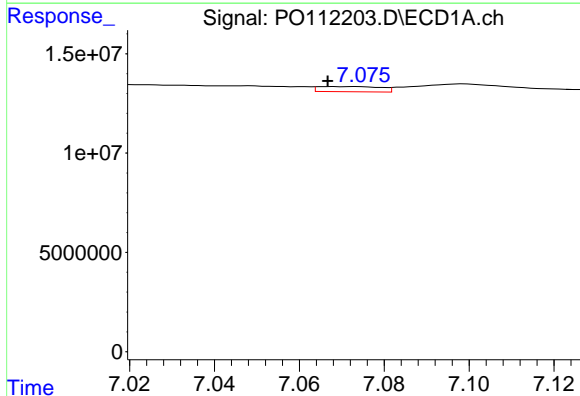
R.T.: 6.837 min
 Delta R.T.: 0.030 min
 Response: 4863066
 Conc: 7.42 ng/ml

Instrument :
 ECD_O
 ClientSampleId :
 AR1242CCC500



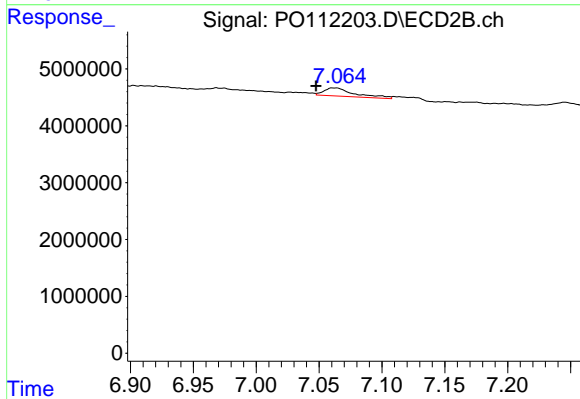
#33 AR-1260-3

R.T.: 6.557 min
 Delta R.T.: -0.021 min
 Response: 2511794
 Conc: 9.11 ng/ml



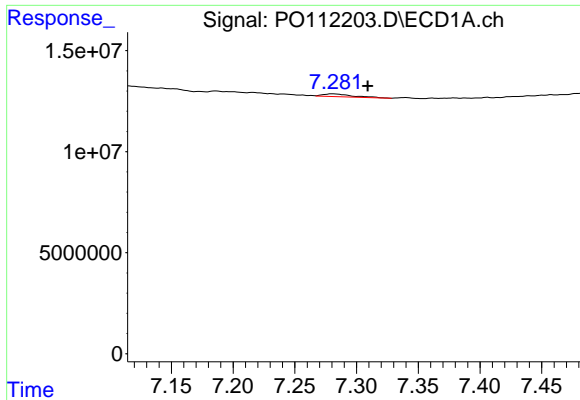
#34 AR-1260-4

R.T.: 7.073 min
 Delta R.T.: 0.007 min
 Response: 2692254
 Conc: 6.19 ng/ml



#34 AR-1260-4

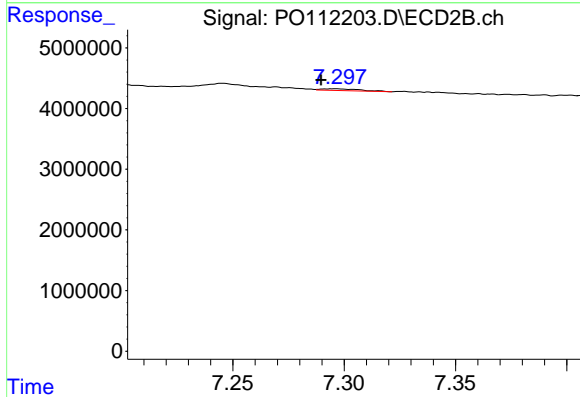
R.T.: 7.063 min
 Delta R.T.: 0.015 min
 Response: 2416442
 Conc: 12.04 ng/ml



#35 AR-1260-5

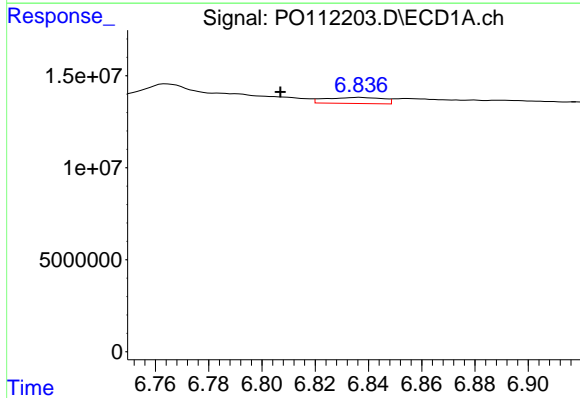
R.T.: 7.281 min
 Delta R.T.: -0.028 min
 Response: 2265871
 Conc: 1.79 ng/ml

Instrument :
 ECD_O
 ClientSampleId :
 AR1242CCC500



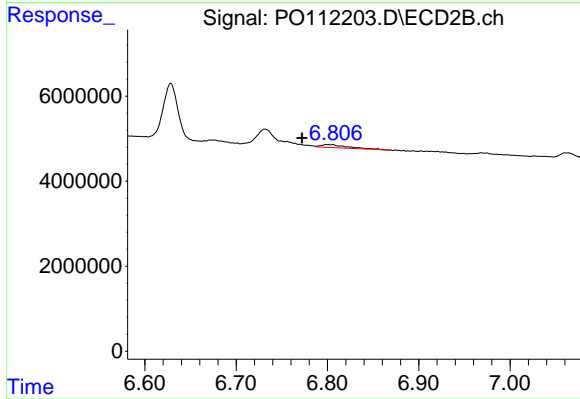
#35 AR-1260-5

R.T.: 7.296 min
 Delta R.T.: 0.006 min
 Response: 360710
 Conc: 0.81 ng/ml



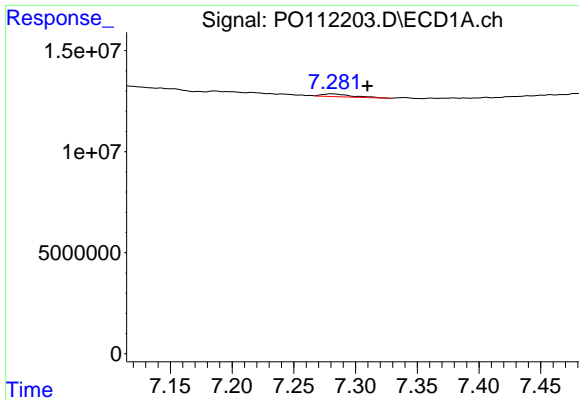
#36 AR-1262-1

R.T.: 6.837 min
 Delta R.T.: 0.030 min
 Response: 4863066
 Conc: 4.76 ng/ml



#36 AR-1262-1

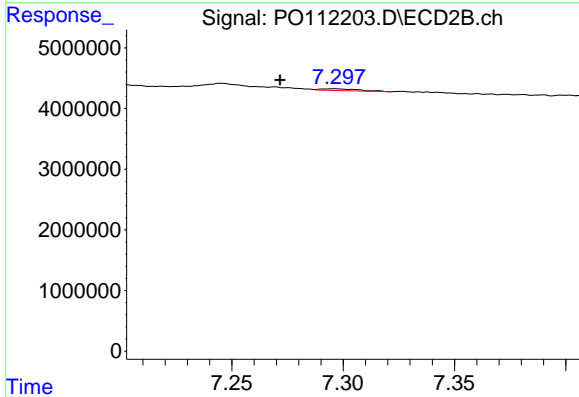
R.T.: 6.806 min
 Delta R.T.: 0.034 min
 Response: 1324423
 Conc: 3.25 ng/ml



#37 AR-1262-2

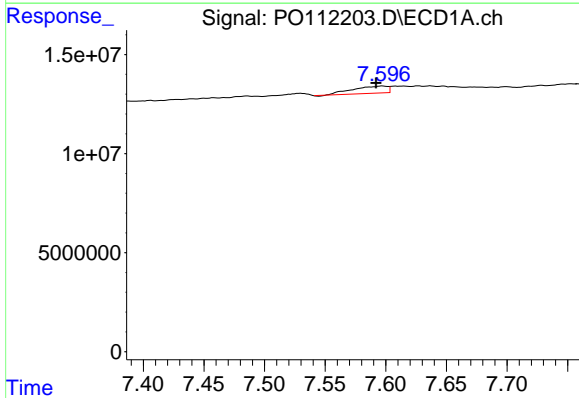
R.T.: 7.281 min
 Delta R.T.: -0.028 min
 Response: 2265871
 Conc: 1.38 ng/ml

Instrument :
 ECD_O
 ClientSampleId :
 AR1242CCC500



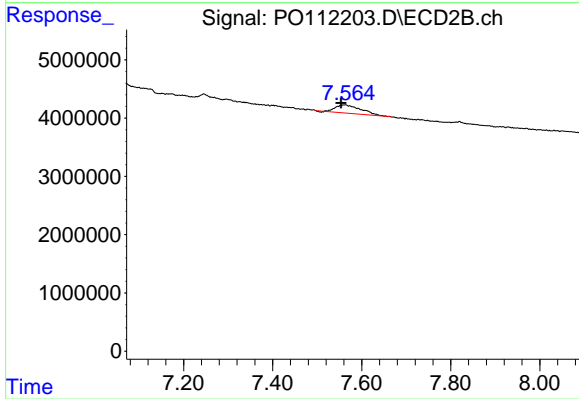
#37 AR-1262-2

R.T.: 7.296 min
 Delta R.T.: 0.024 min
 Response: 360710
 Conc: 0.70 ng/ml



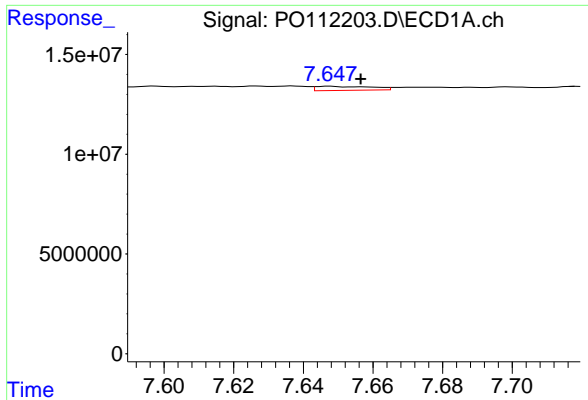
#38 AR-1262-3

R.T.: 7.597 min
 Delta R.T.: 0.005 min
 Response: 7131017
 Conc: 11.11 ng/ml



#38 AR-1262-3

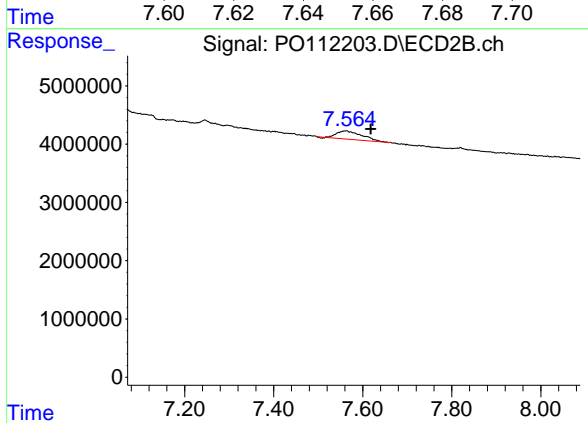
R.T.: 7.564 min
 Delta R.T.: 0.010 min
 Response: 5568018
 Conc: 31.02 ng/ml



#39 AR-1262-4

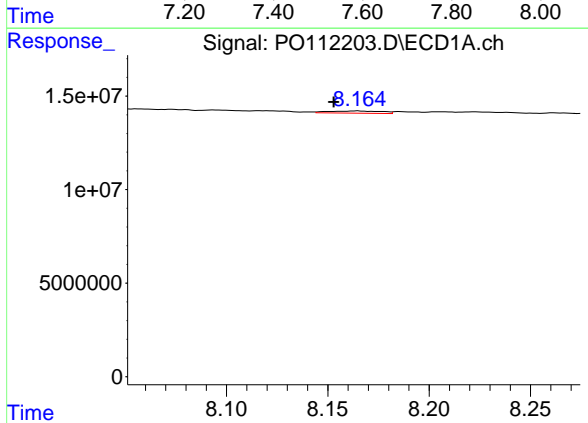
R.T.: 7.648 min
 Delta R.T.: -0.009 min
 Response: 2267340
 Conc: 2.12 ng/ml

Instrument :
 ECD_O
 ClientSampleId :
 AR1242CCC500



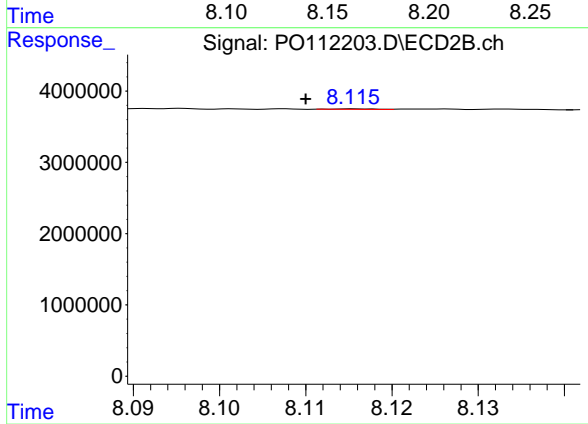
#39 AR-1262-4

R.T.: 7.564 min
 Delta R.T.: -0.054 min
 Response: 5568018
 Conc: 19.14 ng/ml



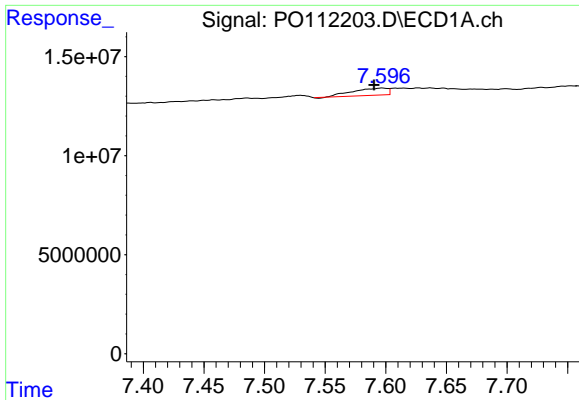
#40 AR-1262-5

R.T.: 8.165 min
 Delta R.T.: 0.012 min
 Response: 2177546
 Conc: 4.86 ng/ml



#40 AR-1262-5

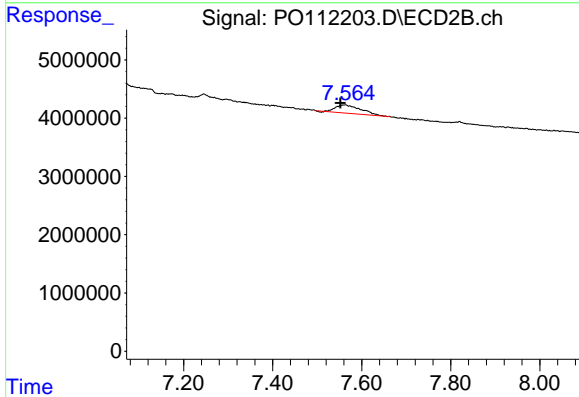
R.T.: 8.116 min
 Delta R.T.: 0.006 min
 Response: 25922
 Conc: 0.25 ng/ml



#41 AR-1268-1

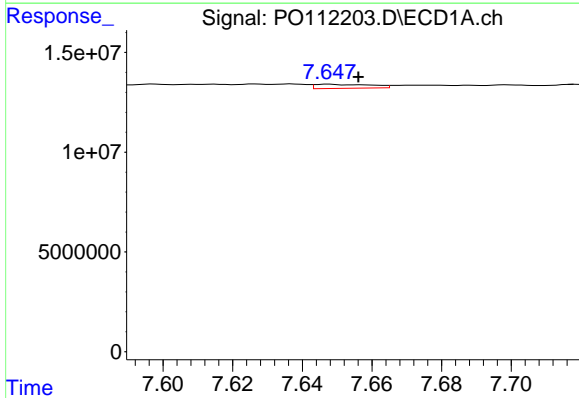
R.T.: 7.597 min
 Delta R.T.: 0.007 min
 Response: 7131017
 Conc: 3.88 ng/ml

Instrument :
 ECD_O
 ClientSampleId :
 AR1242CCC500



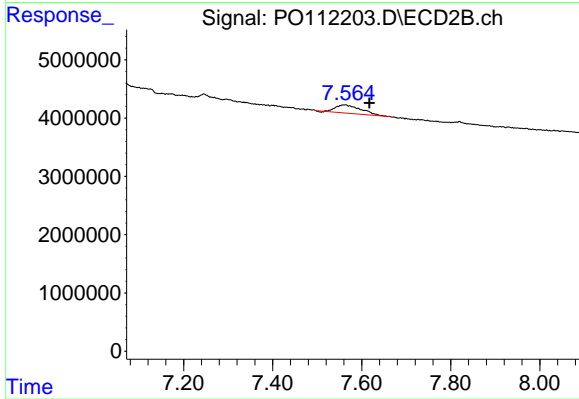
#41 AR-1268-1

R.T.: 7.564 min
 Delta R.T.: 0.012 min
 Response: 5568018
 Conc: 11.33 ng/ml



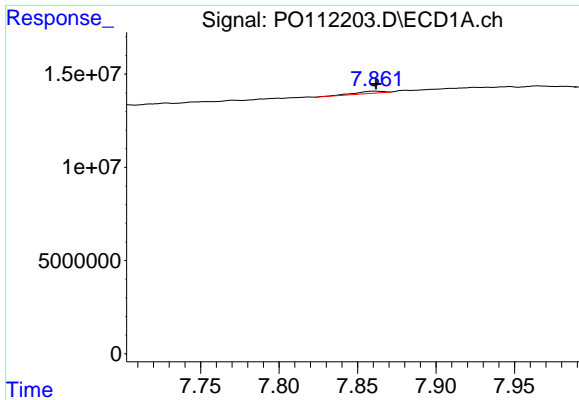
#42 AR-1268-2

R.T.: 7.648 min
 Delta R.T.: -0.008 min
 Response: 2267340
 Conc: 1.46 ng/ml



#42 AR-1268-2

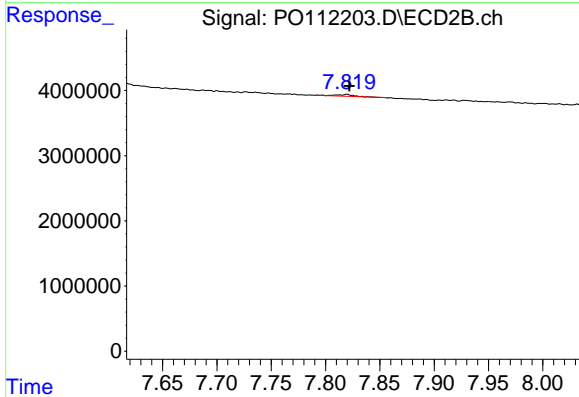
R.T.: 7.564 min
 Delta R.T.: -0.053 min
 Response: 5568018
 Conc: 13.35 ng/ml



#43 AR-1268-3

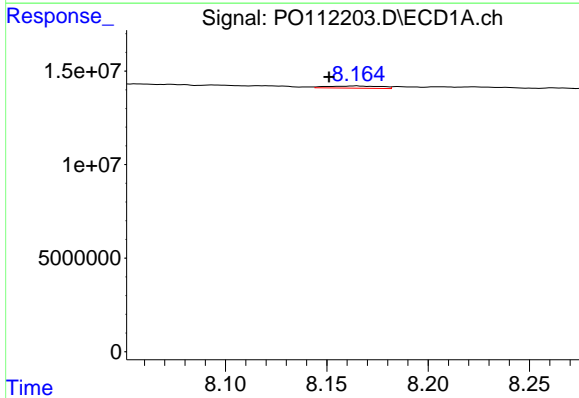
R.T.: 7.861 min
 Delta R.T.: 0.000 min
 Response: 1417924
 Conc: 1.09 ng/ml

Instrument :
 ECD_O
 ClientSampleId :
 AR1242CCC500



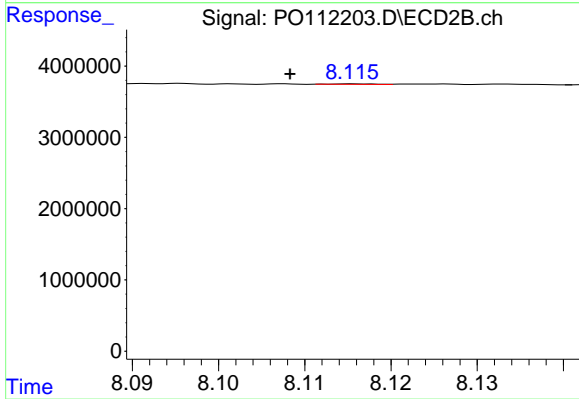
#43 AR-1268-3

R.T.: 7.820 min
 Delta R.T.: -0.002 min
 Response: 286919
 Conc: 0.91 ng/ml



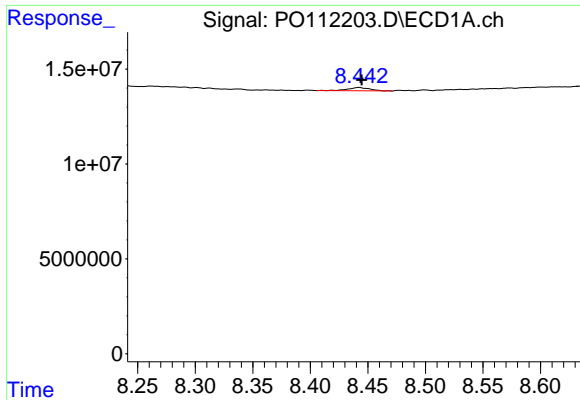
#44 AR-1268-4

R.T.: 8.165 min
 Delta R.T.: 0.013 min
 Response: 2177546
 Conc: 4.53 ng/ml



#44 AR-1268-4

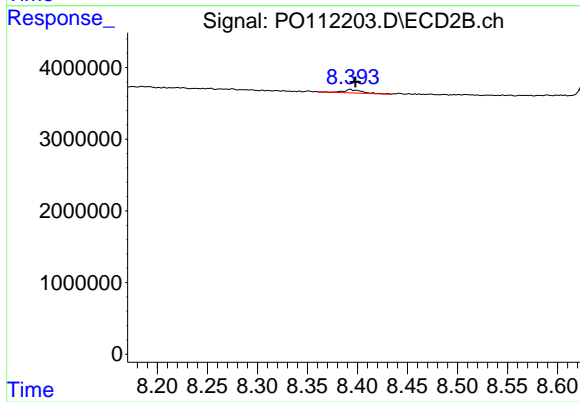
R.T.: 8.116 min
 Delta R.T.: 0.008 min
 Response: 25922
 Conc: 0.23 ng/ml



#45 AR-1268-5

R.T.: 8.442 min
 Delta R.T.: -0.002 min
 Response: 2351300
 Conc: 0.72 ng/ml

Instrument :
 ECD_O
 ClientSampleId :
 AR1242CCC500



#45 AR-1268-5

R.T.: 8.393 min
 Delta R.T.: -0.005 min
 Response: 580134
 Conc: 0.80 ng/ml