

Data Path : Z:\pestpcbsrv\HPCHEM1\ECD_0\Data\P0071025\
 Data File : PO112204.D
 Signal(s) : Signal #1: ECD1A.ch Signal #2: ECD2B.ch
 Acq On : 10 Jul 2025 21:43
 Operator : YP/AJ
 Sample : AR1248CCC500
 Misc :
 ALS Vial : 5 Sample Multiplier: 1

Instrument :
 ECD_0
 ClientSampleId :
 AR1248CCC500

Integration File signal 1: autoint1.e
 Integration File signal 2: autoint2.e
 Quant Time: Jul 10 22:58:19 2025
 Quant Method : Z:\pestpcbsrv\HPCHEM1\ECD_0\methods\P0070825.M
 Quant Title : GC EXTRACTABLES
 QLast Update : Wed Jul 09 10:50:50 2025
 Response via : Initial Calibration
 Integrator: ChemStation

Volume Inj. : 2 µl
 Signal #1 Phase : ZB-MR2 Signal #2 Phase: ZB-MR2
 Signal #1 Info : 30Mx0.32mmx 0.50µ Signal #2 Info : 30M x 0.32mm x 0.25µm

Compound	RT#1	RT#2	Resp#1	Resp#2	ng/ml	ng/ml
System Monitoring Compounds						
1) SA Tetrachlo...	3.672	3.665	508.6E6	312.2E6	51.402	48.996
2) SA Decachlor...	8.700	8.647	323.7E6	85020064	47.338	49.331
Target Compounds						
3) L1 AR-1016-1	4.759	4.759	110.9E6	74921994	326.013	336.223
4) L1 AR-1016-2	4.778	4.790	117.6E6	15056816	236.386	45.752 #
5) L1 AR-1016-3	4.834	4.935	66641463	46957511	205.865	276.437 #
6) L1 AR-1016-4	4.955	4.977	74595923	93118834	290.483	678.573 #
7) L1 AR-1016-5	5.210	5.229	205.9E6	43288576	752.524	251.021 #
8) L2 AR-1221-1	3.882	3.875	793060	1034062	6.801	12.565 #
9) L2 AR-1221-2	3.973	3.962	6877713	4897042	87.236	82.506
10) L2 AR-1221-3	4.046	4.034	7196332	5423589	26.694	28.730
11) L3 AR-1232-1	4.046	4.034	7196332	5423589	33.523	36.133
12) L3 AR-1232-2	4.537	4.759	46650999	74921994	410.527	489.412
13) L3 AR-1232-3	4.778	4.935	117.6E6	46957511	513.312	621.904
14) L3 AR-1232-4	4.955	5.018	74595923	99656647	652.652	1510.219 #
15) L3 AR-1232-5	4.997	5.189	144.3E6	122.9E6	1965.256	1655.530
16) L4 AR-1242-1	4.759	4.741	110.9E6	70816507	382.840	365.300
17) L4 AR-1242-2	4.778	4.759	117.6E6	74921994	275.998	264.413
18) L4 AR-1242-3	4.834	4.935	66641463	46957511	243.496	322.339 #
19) L4 AR-1242-4	4.955	5.018	74595923	99656647	331.069	702.595 #
20) L4 AR-1242-5	5.605	5.538	201.1E6	172.4E6	949.852	948.621
21) L5 AR-1248-1	4.759	4.741	110.9E6	70816507	488.694	458.751
22) L5 AR-1248-2	4.997	4.977	144.3E6	93118834	467.851	452.543
23) L5 AR-1248-3	5.210	5.018	205.9E6	99656647	505.591	463.954
24) L5 AR-1248-4	5.564	5.189	292.4E6	122.9E6	506.619	475.171
25) L5 AR-1248-5	5.605	5.579	201.1E6	123.6E6	515.126	493.225
26) L6 AR-1254-1	5.564	5.538	292.4E6	172.4E6	475.349	452.285
27) L6 AR-1254-2	5.714	5.687	86651043	57271599	161.757	172.603
28) L6 AR-1254-3	6.117	6.087	119.7E6	75239752	142.582	156.085
29) L6 AR-1254-4	6.347	6.315	110.7E6	51592324	230.117	197.903
30) L6 AR-1254-5	6.766	6.731	49660573	13430556	64.165	37.689 #
31) L7 AR-1260-1	6.262	6.231	46772881	35469993	93.315	126.425 #
32) L7 AR-1260-2	6.438	6.406	19297476	6122013	26.144	18.006 #
33) L7 AR-1260-3	6.843f	6.555	6565741	4731355	10.017	17.168 #
34) L7 AR-1260-4	7.064	7.063	11996176	3595228	27.562	17.918 #
35) L7 AR-1260-5	7.306	7.294	6164106	3810138	4.882	8.510 #
36) L8 AR-1262-1	6.843f	6.800	6565741	2199625	6.426	5.400
37) L8 AR-1262-2	7.306	7.267	6164106	2460193	3.760	4.800 #
38) L8 AR-1262-3	7.592	7.555	4111452	4995754	6.404	27.828 #
39) L8 AR-1262-4	7.650	7.610	6555685	2076558	6.119	7.138
40) L8 AR-1262-5	8.169	8.109	4515973	104673	10.077	0.990 #
41) L9 AR-1268-1	7.592	7.555	4111452	4995754	2.238	10.165 #

Data Path : Z:\pestpcbsrv\HPCHEM1\ECD_0\Data\P0071025\
 Data File : P0112204.D
 Signal(s) : Signal #1: ECD1A.ch Signal #2: ECD2B.ch
 Acq On : 10 Jul 2025 21:43
 Operator : YP/AJ
 Sample : AR1248CCC500
 Misc :
 ALS Vial : 5 Sample Multiplier: 1

Instrument :
 ECD_0
 ClientSampleId :
 AR1248CCC500

Integration File signal 1: autoint1.e
 Integration File signal 2: autoint2.e
 Quant Time: Jul 10 22:58:19 2025
 Quant Method : Z:\pestpcbsrv\HPCHEM1\ECD_0\methods\P0070825.M
 Quant Title : GC EXTRACTABLES
 QLast Update : Wed Jul 09 10:50:50 2025
 Response via : Initial Calibration
 Integrator: ChemStation

Volume Inj. : 2 µl
 Signal #1 Phase : ZB-MR1 Signal #2 Phase: ZB-MR2
 Signal #1 Info : 30Mx0.32mmx 0.50µ Signal #2 Info : 30M x 0.32mm x 0.25µm

	Compound	RT#1	RT#2	Resp#1	Resp#2	ng/ml	ng/ml
42)	L9 AR-1268-2	7.650	7.610	6555685	2076558	4.209	4.978
43)	L9 AR-1268-3	7.810f	7.819	916915	617368	0.705	1.951 #
44)	L9 AR-1268-4	8.169	8.109	4515973	104673	9.400	0.939 #
45)	L9 AR-1268-5	8.443	8.395	3423229	676313	1.049	0.931

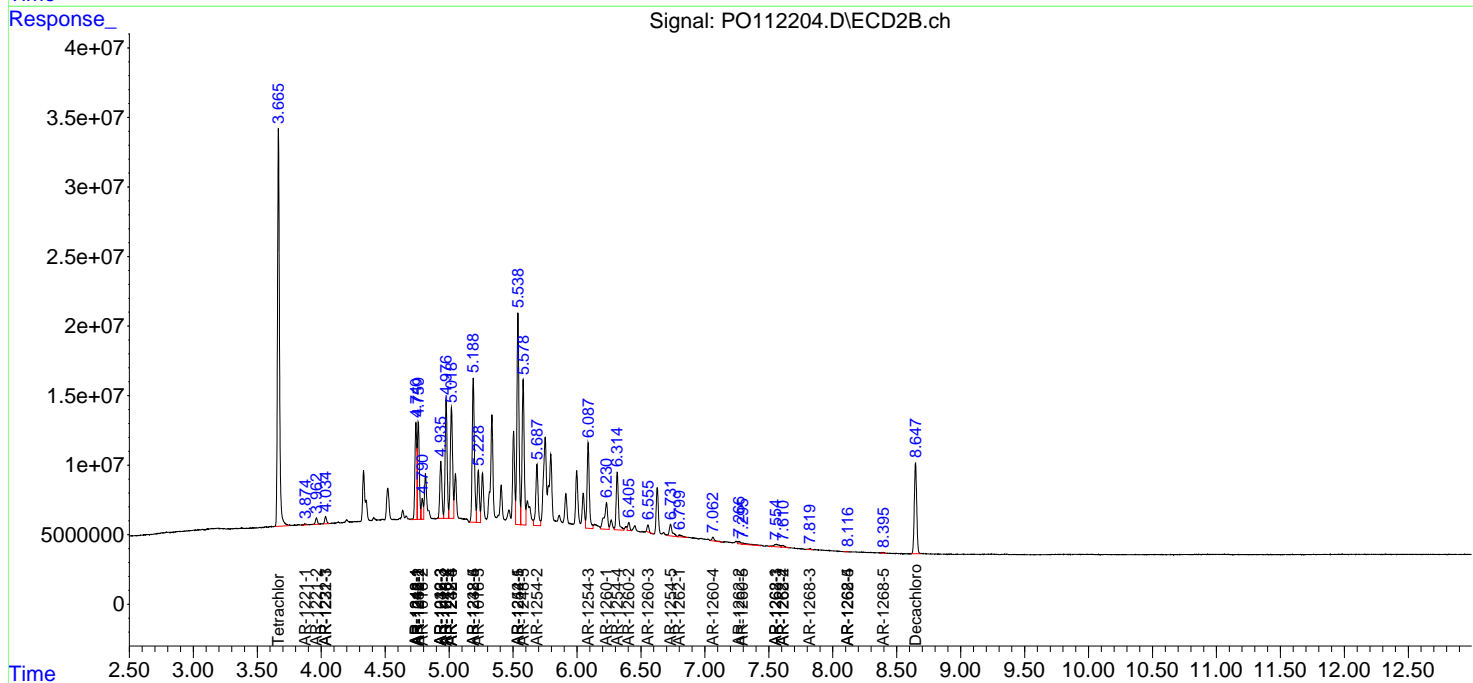
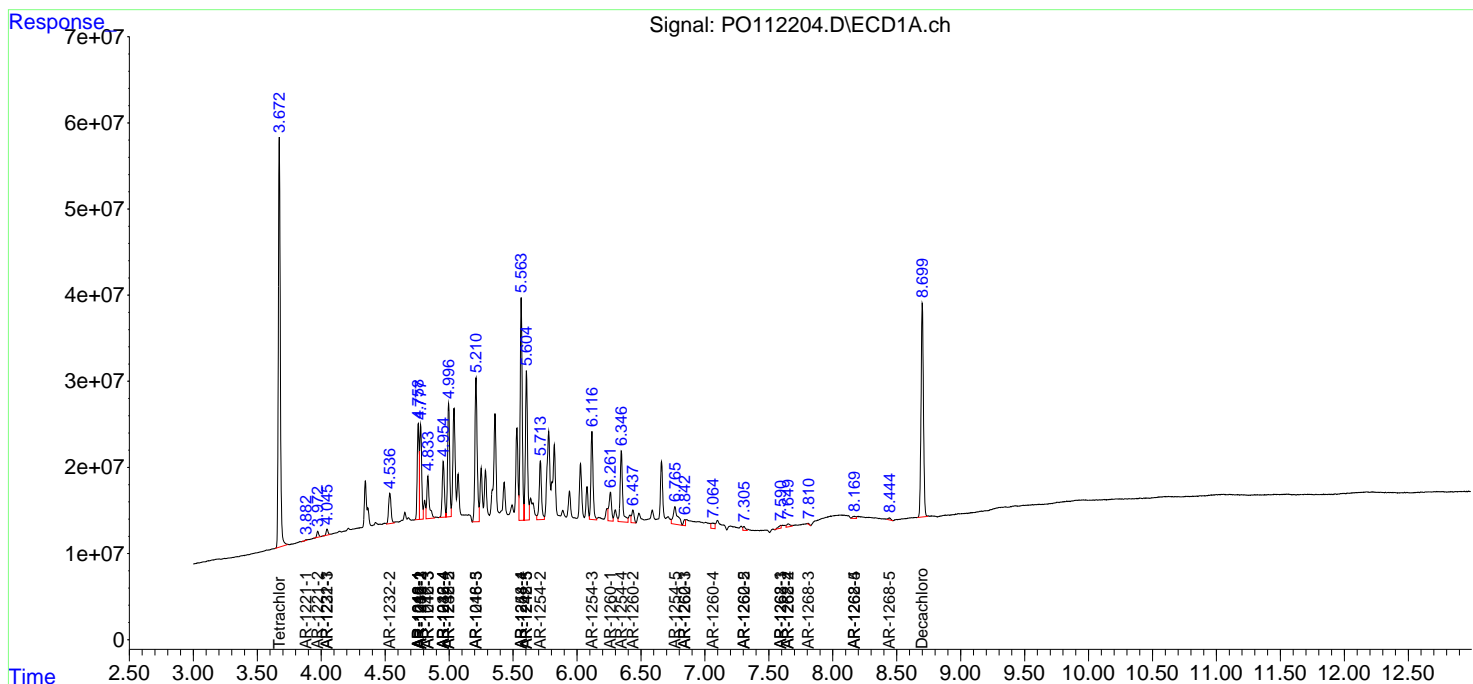
(f)=RT Delta > 1/2 Window (#)=Amounts differ by > 25% (m)=manual int.

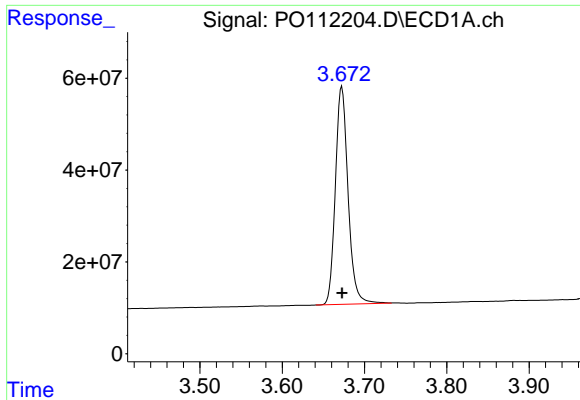
Data Path : Z:\pestpcbsrv\HPCHEM1\ECD_O\Data\PO071025\
 Data File : PO112204.D
 Signal(s) : Signal #1: ECD1A.ch Signal #2: ECD2B.ch
 Acq On : 10 Jul 2025 21:43
 Operator : YP/AJ
 Sample : AR1248CCC500
 Misc :
 ALS Vial : 5 Sample Multiplier: 1

Instrument :
 ECD_O
 ClientSampleId :
 AR1248CCC500

Integration File signal 1: autoint1.e
 Integration File signal 2: autoint2.e
 Quant Time: Jul 10 22:58:19 2025
 Quant Method : Z:\pestpcbsrv\HPCHEM1\ECD_O\methods\PO070825.M
 Quant Title : GC EXTRACTABLES
 QLast Update : Wed Jul 09 10:50:50 2025
 Response via : Initial Calibration
 Integrator: ChemStation

Volume Inj. : 2 µl
 Signal #1 Phase : ZB-MR1 Signal #2 Phase: ZB-MR2
 Signal #1 Info : 30Mx0.32mmx 0.50µ Signal #2 Info : 30M x 0.32mm x 0.25µm

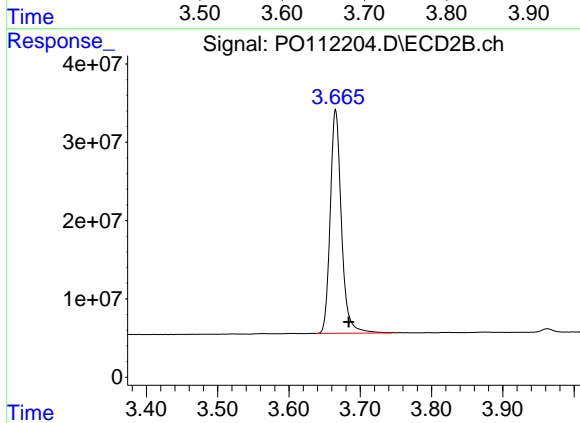




#1 Tetrachloro-m-xylene

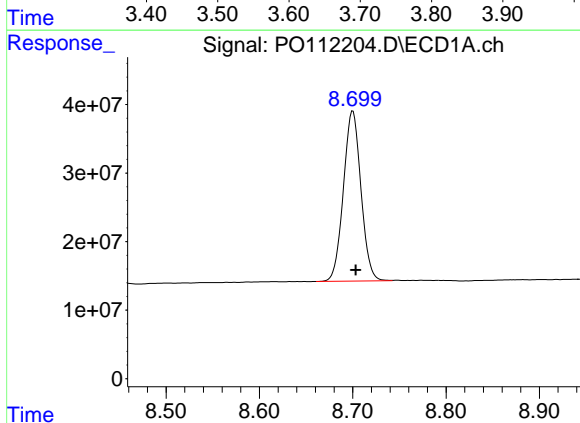
R.T.: 3.672 min
Delta R.T.: 0.000 min
Response: 508603688
Conc: 51.40 ng/ml

Instrument :
ECD_O
ClientSampleId :
AR1248CCC500



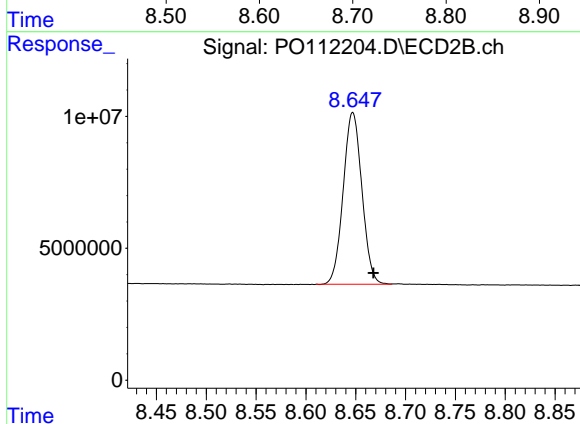
#1 Tetrachloro-m-xylene

R.T.: 3.665 min
Delta R.T.: -0.018 min
Response: 312156217
Conc: 49.00 ng/ml



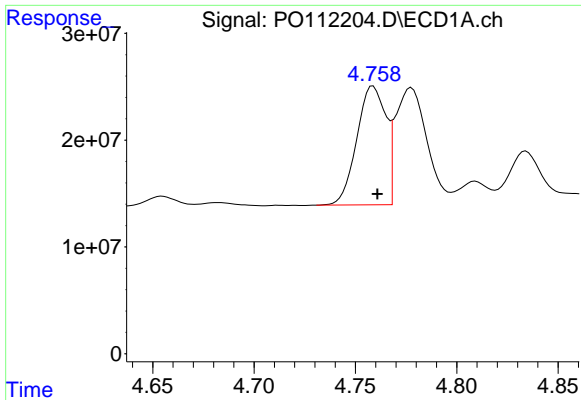
#2 Decachlorobiphenyl

R.T.: 8.700 min
Delta R.T.: -0.003 min
Response: 323654199
Conc: 47.34 ng/ml



#2 Decachlorobiphenyl

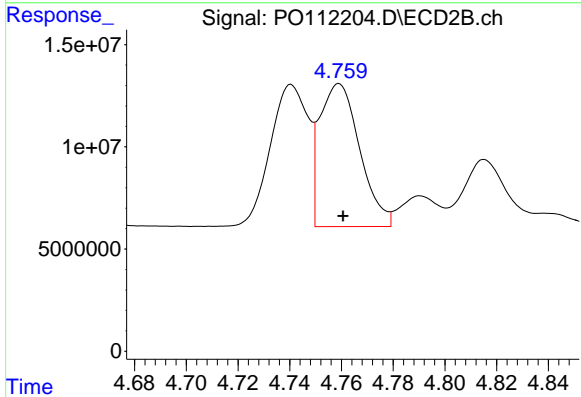
R.T.: 8.647 min
Delta R.T.: -0.021 min
Response: 85020064
Conc: 49.33 ng/ml



#3 AR-1016-1

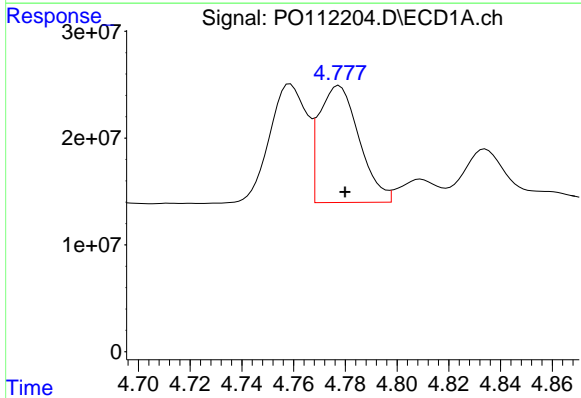
R.T.: 4.759 min
 Delta R.T.: -0.002 min
 Response: 110884514
 Conc: 326.01 ng/ml

Instrument :
 ECD_O
 ClientSampleId :
 AR1248CCC500



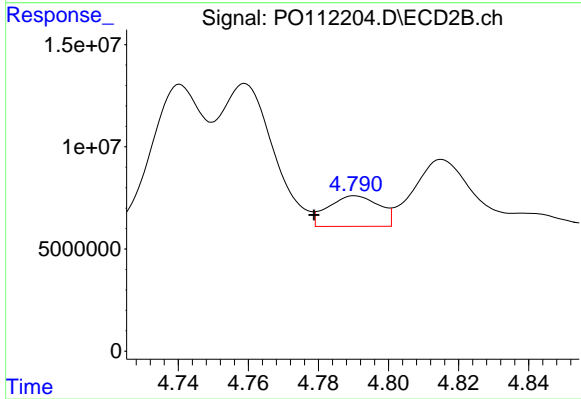
#3 AR-1016-1

R.T.: 4.759 min
 Delta R.T.: -0.002 min
 Response: 74921994
 Conc: 336.22 ng/ml



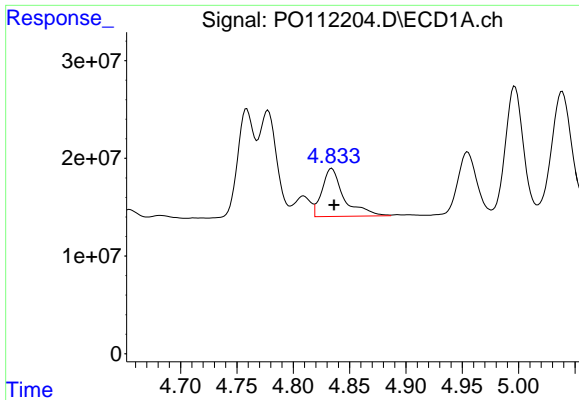
#4 AR-1016-2

R.T.: 4.778 min
 Delta R.T.: -0.002 min
 Response: 117552914
 Conc: 236.39 ng/ml



#4 AR-1016-2

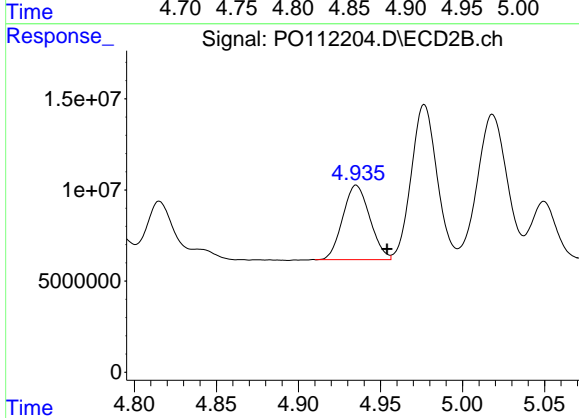
R.T.: 4.790 min
 Delta R.T.: 0.012 min
 Response: 15056816
 Conc: 45.75 ng/ml



#5 AR-1016-3

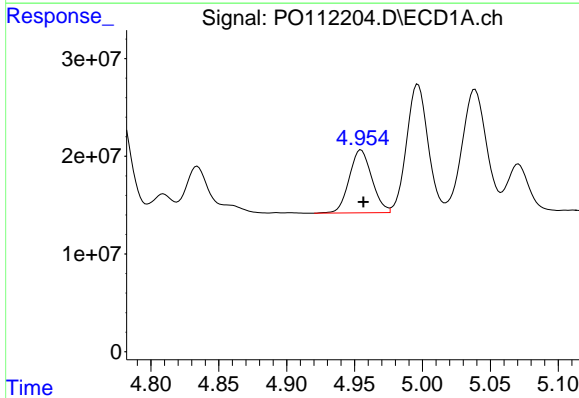
R.T.: 4.834 min
 Delta R.T.: -0.002 min
 Response: 66641463
 Conc: 205.87 ng/ml

Instrument :
 ECD_O
 ClientSampleId :
 AR1248CCC500



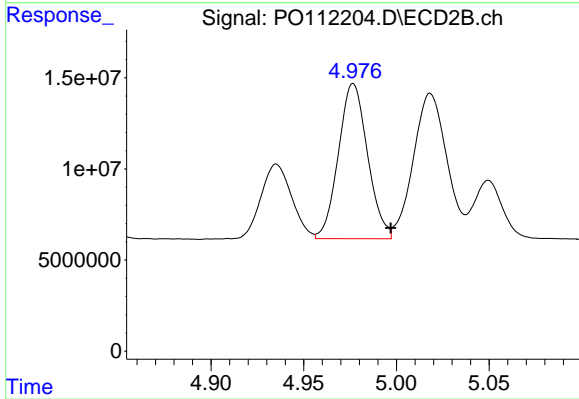
#5 AR-1016-3

R.T.: 4.935 min
 Delta R.T.: -0.019 min
 Response: 46957511
 Conc: 276.44 ng/ml



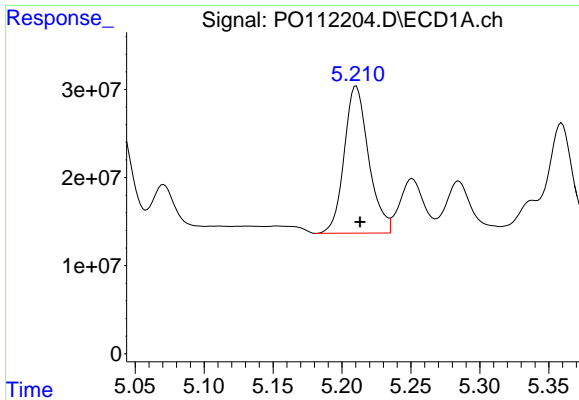
#6 AR-1016-4

R.T.: 4.955 min
 Delta R.T.: -0.002 min
 Response: 74595923
 Conc: 290.48 ng/ml



#6 AR-1016-4

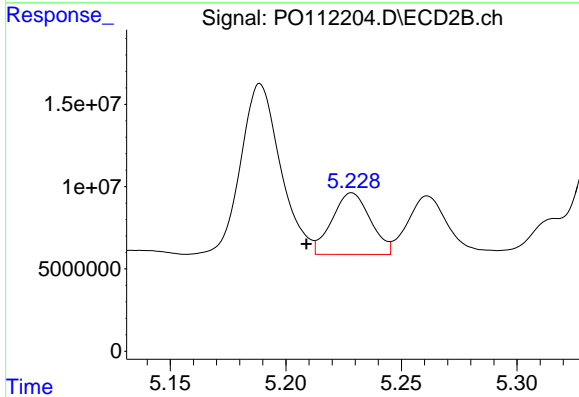
R.T.: 4.977 min
 Delta R.T.: -0.020 min
 Response: 93118834
 Conc: 678.57 ng/ml



#7 AR-1016-5

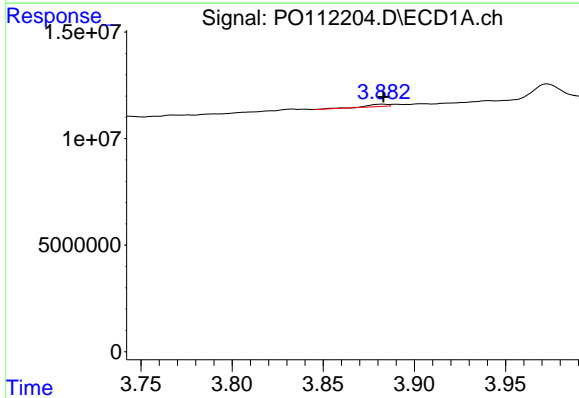
R.T.: 5.210 min
 Delta R.T.: -0.003 min
 Response: 205937101
 Conc: 752.52 ng/ml

Instrument :
 ECD_O
 ClientSampleId :
 AR1248CCC500



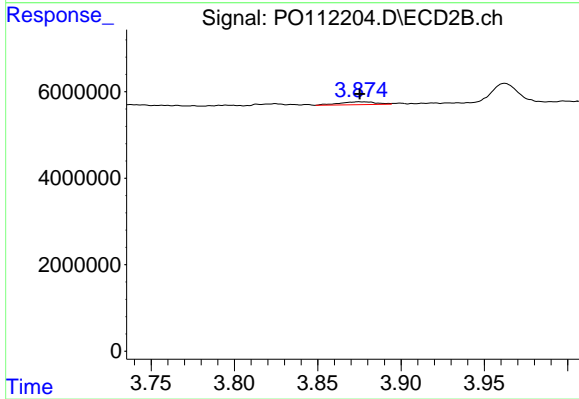
#7 AR-1016-5

R.T.: 5.229 min
 Delta R.T.: 0.020 min
 Response: 43288576
 Conc: 251.02 ng/ml



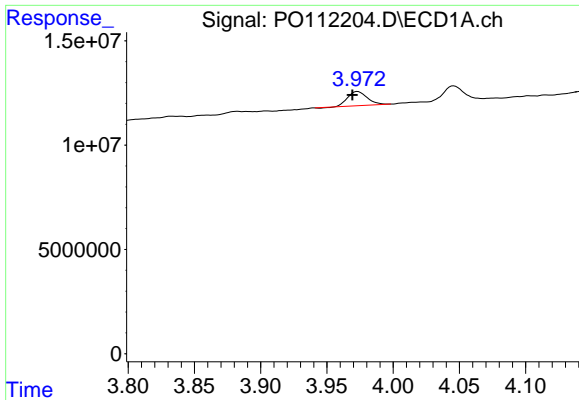
#8 AR-1221-1

R.T.: 3.882 min
 Delta R.T.: 0.000 min
 Response: 793060
 Conc: 6.80 ng/ml



#8 AR-1221-1

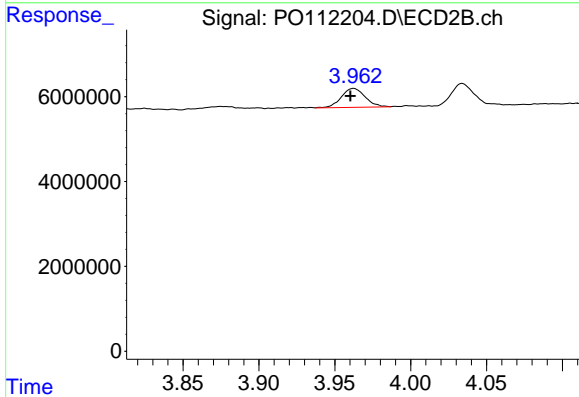
R.T.: 3.875 min
 Delta R.T.: 0.000 min
 Response: 1034062
 Conc: 12.57 ng/ml



#9 AR-1221-2

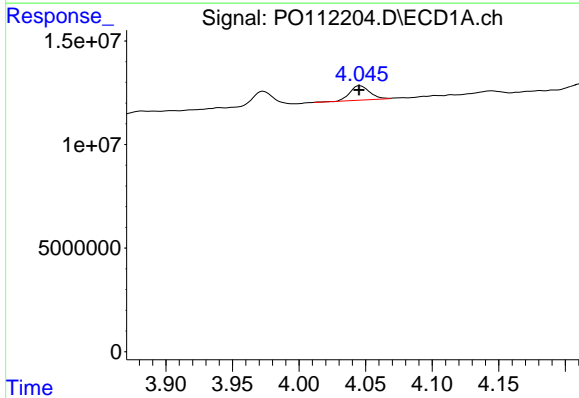
R.T.: 3.973 min
 Delta R.T.: 0.004 min
 Response: 6877713
 Conc: 87.24 ng/ml

Instrument :
 ECD_O
 ClientSampleId :
 AR1248CCC500



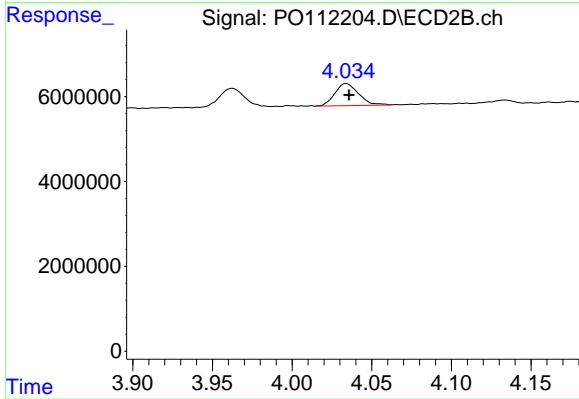
#9 AR-1221-2

R.T.: 3.962 min
 Delta R.T.: 0.002 min
 Response: 4897042
 Conc: 82.51 ng/ml



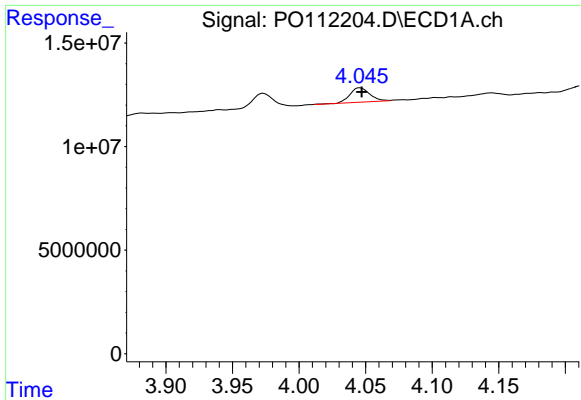
#10 AR-1221-3

R.T.: 4.046 min
 Delta R.T.: 0.000 min
 Response: 7196332
 Conc: 26.69 ng/ml



#10 AR-1221-3

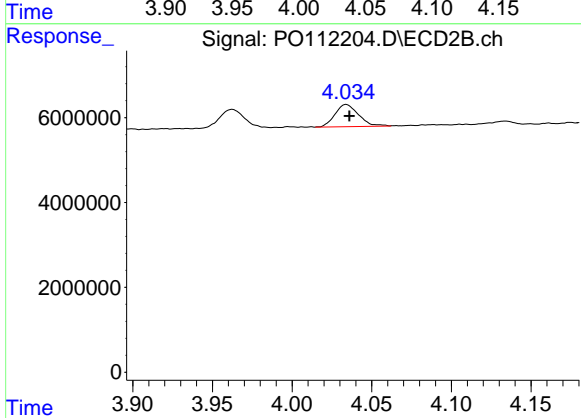
R.T.: 4.034 min
 Delta R.T.: -0.002 min
 Response: 5423589
 Conc: 28.73 ng/ml



#11 AR-1232-1

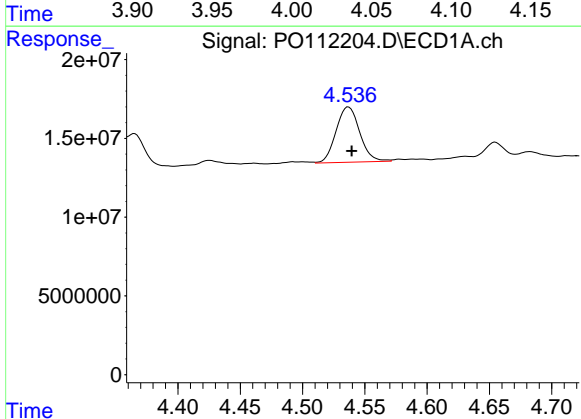
R.T.: 4.046 min
 Delta R.T.: -0.001 min
 Response: 7196332
 Conc: 33.52 ng/ml

Instrument :
 ECD_O
 ClientSampleId :
 AR1248CCC500



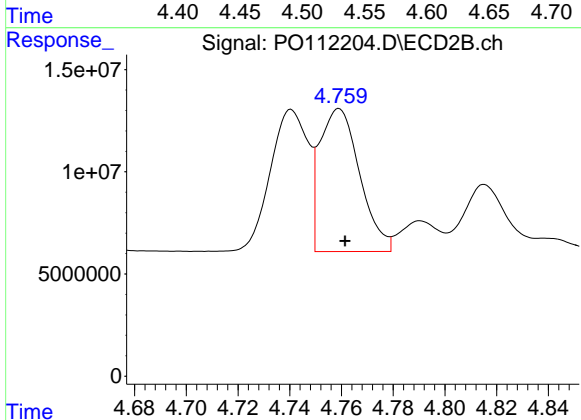
#11 AR-1232-1

R.T.: 4.034 min
 Delta R.T.: -0.002 min
 Response: 5423589
 Conc: 36.13 ng/ml



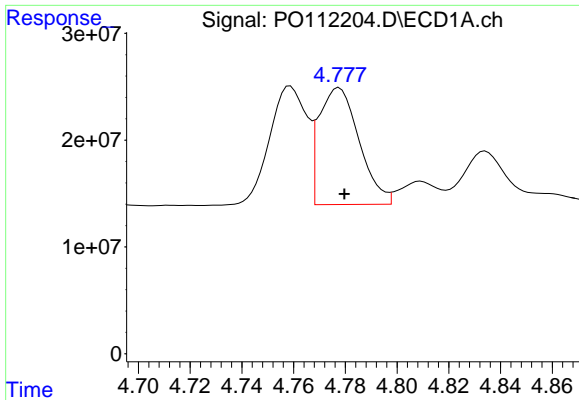
#12 AR-1232-2

R.T.: 4.537 min
 Delta R.T.: -0.003 min
 Response: 46650999
 Conc: 410.53 ng/ml



#12 AR-1232-2

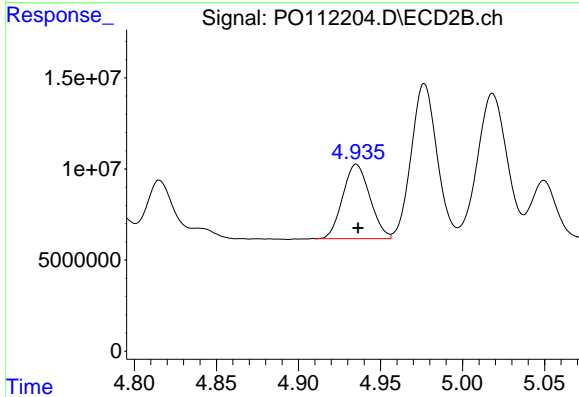
R.T.: 4.759 min
 Delta R.T.: -0.002 min
 Response: 74921994
 Conc: 489.41 ng/ml



#13 AR-1232-3

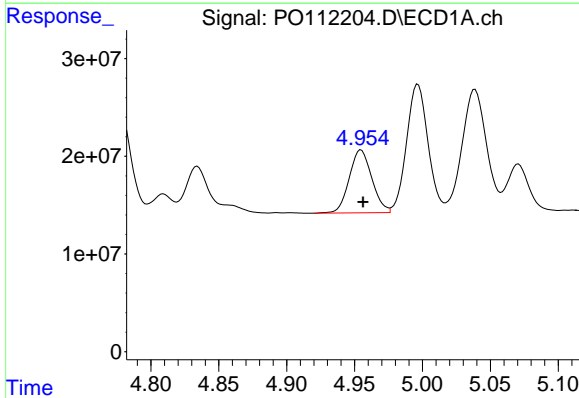
R.T.: 4.778 min
 Delta R.T.: -0.002 min
 Response: 117552914
 Conc: 513.31 ng/ml

Instrument :
 ECD_O
 ClientSampleId :
 AR1248CCC500



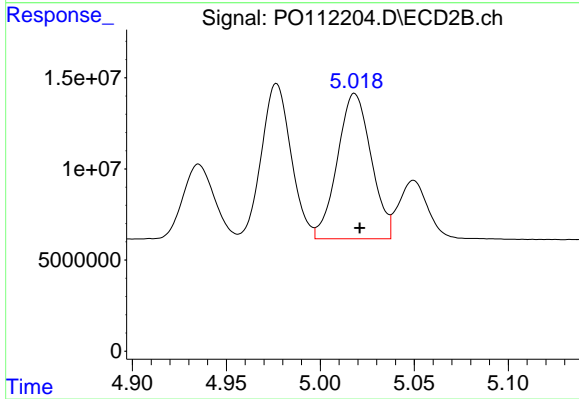
#13 AR-1232-3

R.T.: 4.935 min
 Delta R.T.: -0.001 min
 Response: 46957511
 Conc: 621.90 ng/ml



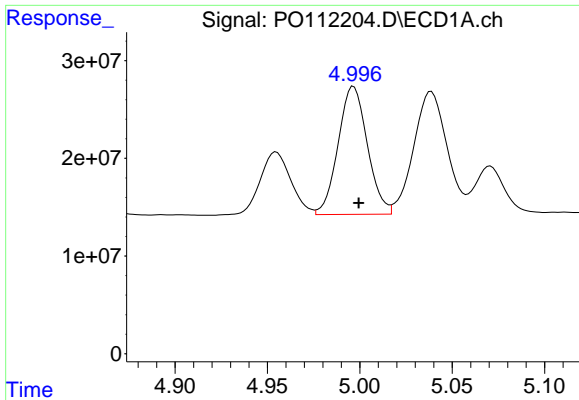
#14 AR-1232-4

R.T.: 4.955 min
 Delta R.T.: -0.001 min
 Response: 74595923
 Conc: 652.65 ng/ml



#14 AR-1232-4

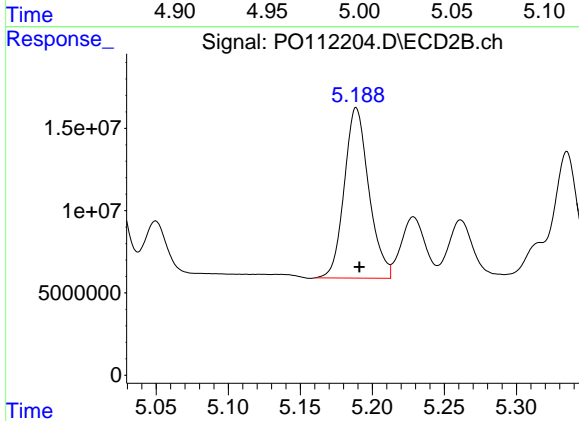
R.T.: 5.018 min
 Delta R.T.: -0.003 min
 Response: 99656647
 Conc: 1510.22 ng/ml



#15 AR-1232-5

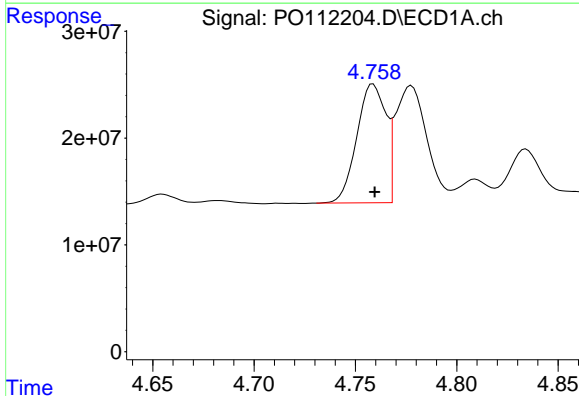
R.T.: 4.997 min
 Delta R.T.: -0.003 min
 Response: 144250302
 Conc: 1965.26 ng/ml

Instrument :
 ECD_O
 ClientSampleId :
 AR1248CCC500



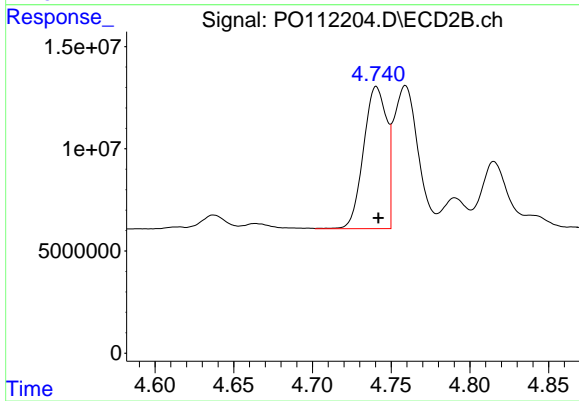
#15 AR-1232-5

R.T.: 5.189 min
 Delta R.T.: -0.002 min
 Response: 122939553
 Conc: 1655.53 ng/ml



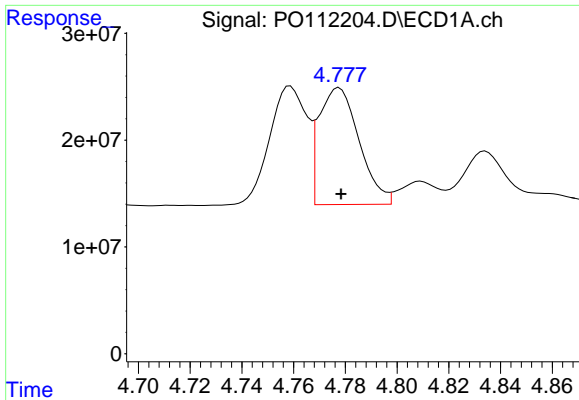
#16 AR-1242-1

R.T.: 4.759 min
 Delta R.T.: 0.000 min
 Response: 110884514
 Conc: 382.84 ng/ml



#16 AR-1242-1

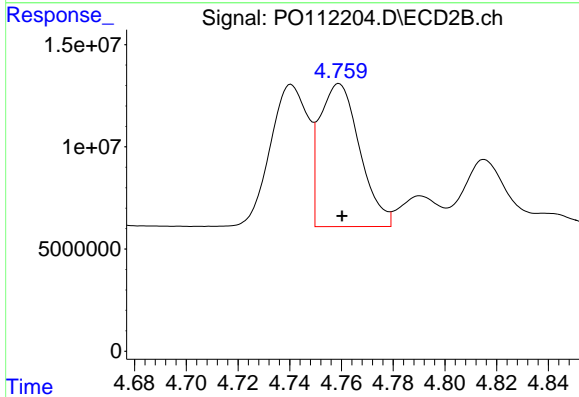
R.T.: 4.741 min
 Delta R.T.: -0.001 min
 Response: 70816507
 Conc: 365.30 ng/ml



#17 AR-1242-2

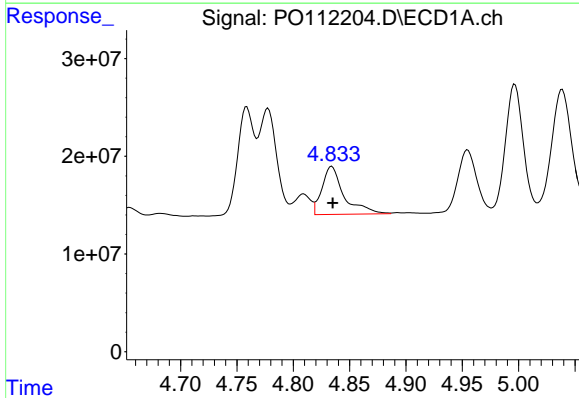
R.T.: 4.778 min
 Delta R.T.: 0.000 min
 Response: 117552914
 Conc: 276.00 ng/ml

Instrument :
 ECD_O
 ClientSampleId :
 AR1248CCC500



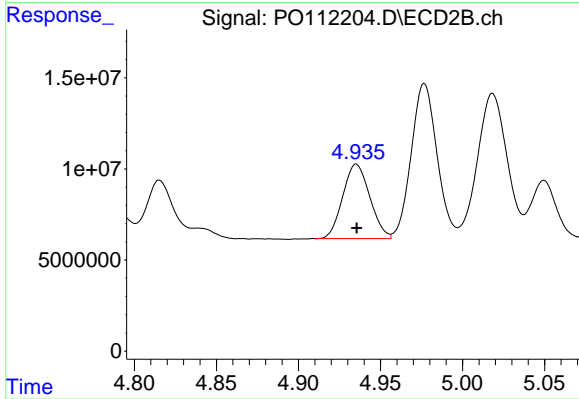
#17 AR-1242-2

R.T.: 4.759 min
 Delta R.T.: -0.001 min
 Response: 74921994
 Conc: 264.41 ng/ml



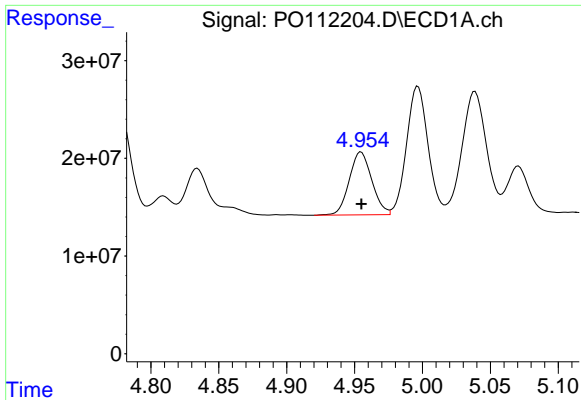
#18 AR-1242-3

R.T.: 4.834 min
 Delta R.T.: 0.000 min
 Response: 66641463
 Conc: 243.50 ng/ml



#18 AR-1242-3

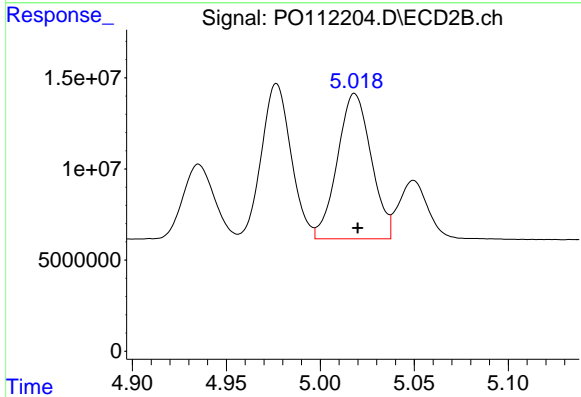
R.T.: 4.935 min
 Delta R.T.: 0.000 min
 Response: 46957511
 Conc: 322.34 ng/ml



#19 AR-1242-4

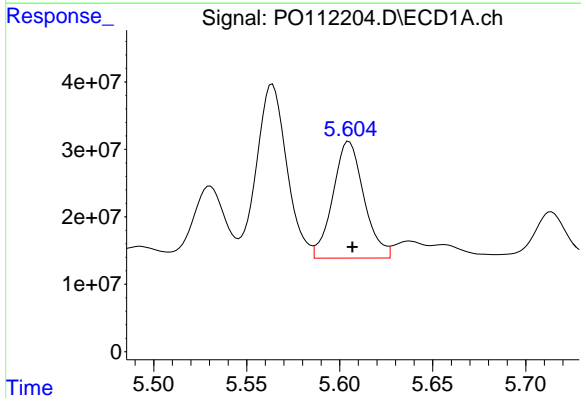
R.T.: 4.955 min
 Delta R.T.: 0.000 min
 Response: 74595923
 Conc: 331.07 ng/ml

Instrument :
 ECD_O
 ClientSampleId :
 AR1248CCC500



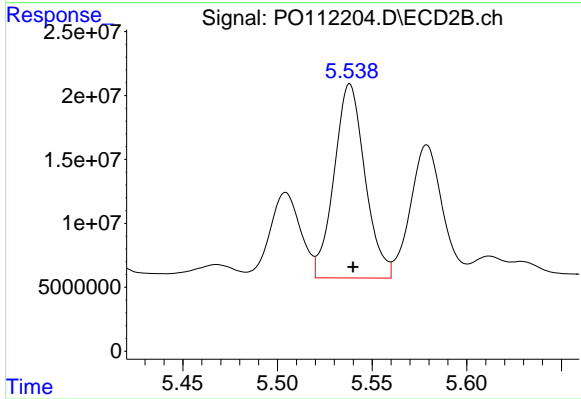
#19 AR-1242-4

R.T.: 5.018 min
 Delta R.T.: -0.002 min
 Response: 99656647
 Conc: 702.60 ng/ml



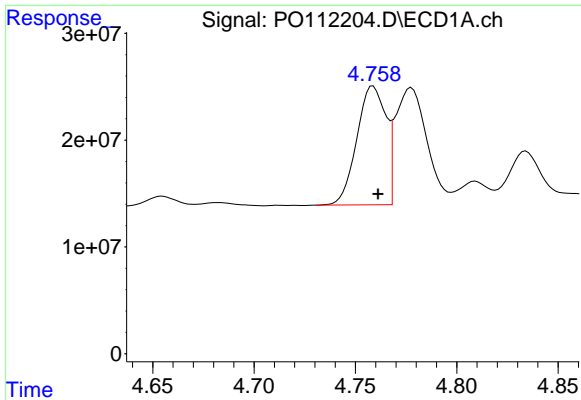
#20 AR-1242-5

R.T.: 5.605 min
 Delta R.T.: -0.002 min
 Response: 201056160
 Conc: 949.85 ng/ml



#20 AR-1242-5

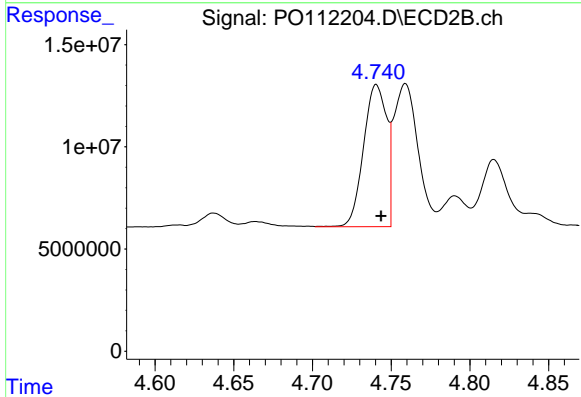
R.T.: 5.538 min
 Delta R.T.: -0.002 min
 Response: 172396760
 Conc: 948.62 ng/ml



#21 AR-1248-1

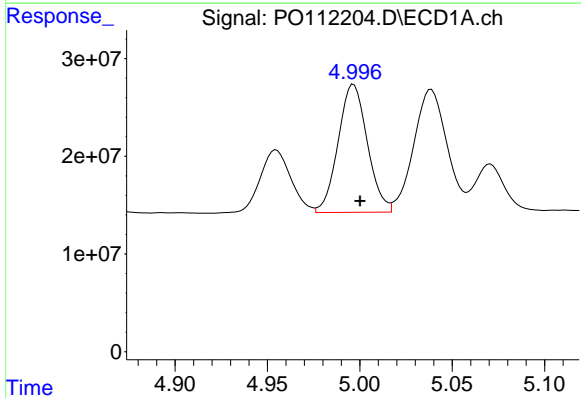
R.T.: 4.759 min
 Delta R.T.: -0.002 min
 Response: 110884514
 Conc: 488.69 ng/ml

Instrument :
 ECD_O
 ClientSampleId :
 AR1248CCC500



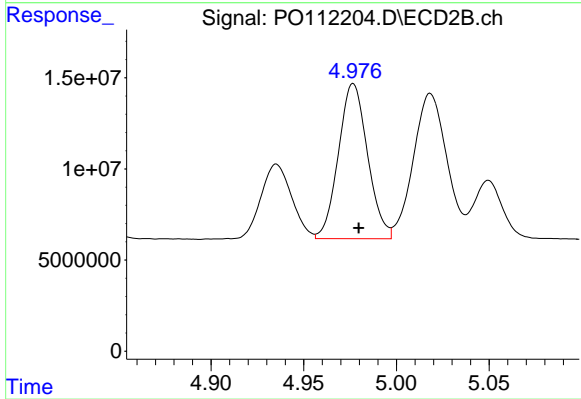
#21 AR-1248-1

R.T.: 4.741 min
 Delta R.T.: -0.003 min
 Response: 70816507
 Conc: 458.75 ng/ml



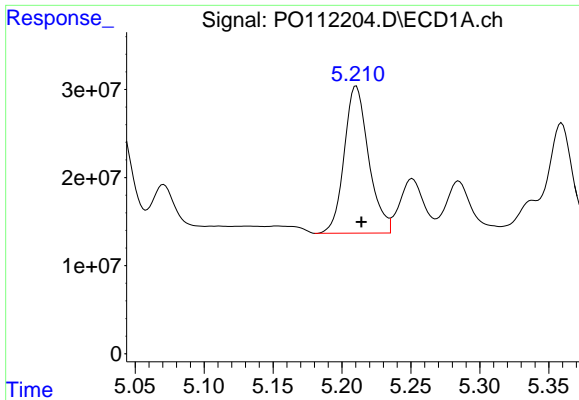
#22 AR-1248-2

R.T.: 4.997 min
 Delta R.T.: -0.003 min
 Response: 144250302
 Conc: 467.85 ng/ml



#22 AR-1248-2

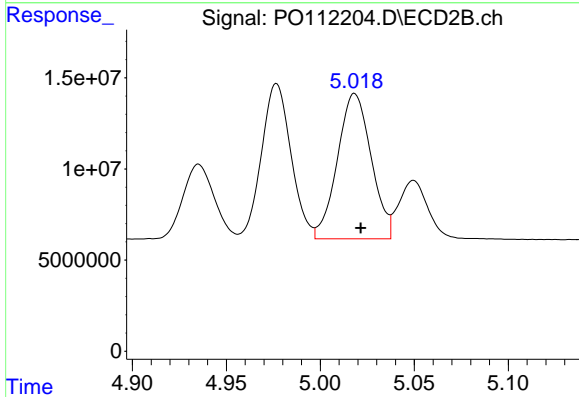
R.T.: 4.977 min
 Delta R.T.: -0.003 min
 Response: 93118834
 Conc: 452.54 ng/ml



#23 AR-1248-3

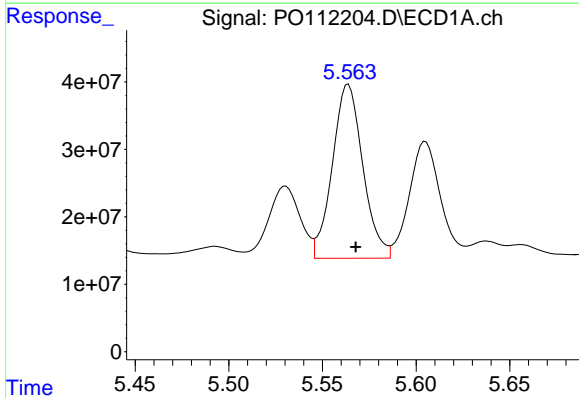
R.T.: 5.210 min
 Delta R.T.: -0.004 min
 Response: 205937101
 Conc: 505.59 ng/ml

Instrument :
 ECD_O
 ClientSampleId :
 AR1248CCC500



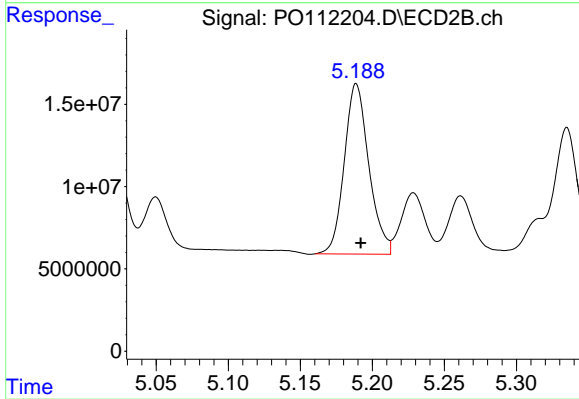
#23 AR-1248-3

R.T.: 5.018 min
 Delta R.T.: -0.003 min
 Response: 99656647
 Conc: 463.95 ng/ml



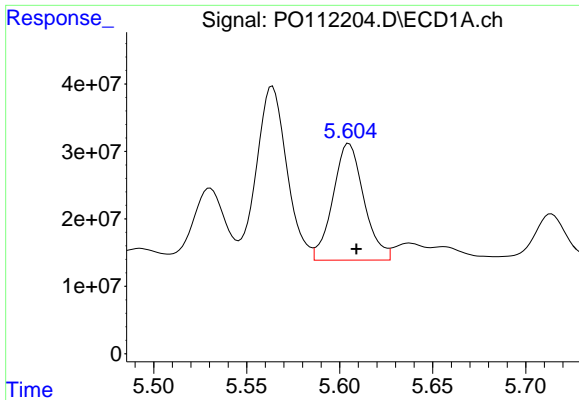
#24 AR-1248-4

R.T.: 5.564 min
 Delta R.T.: -0.004 min
 Response: 292393700
 Conc: 506.62 ng/ml



#24 AR-1248-4

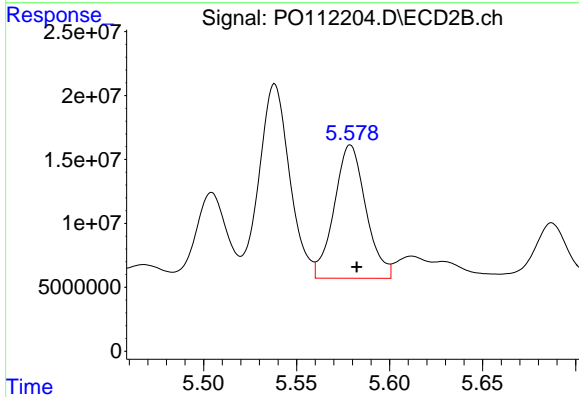
R.T.: 5.189 min
 Delta R.T.: -0.003 min
 Response: 122939553
 Conc: 475.17 ng/ml



#25 AR-1248-5

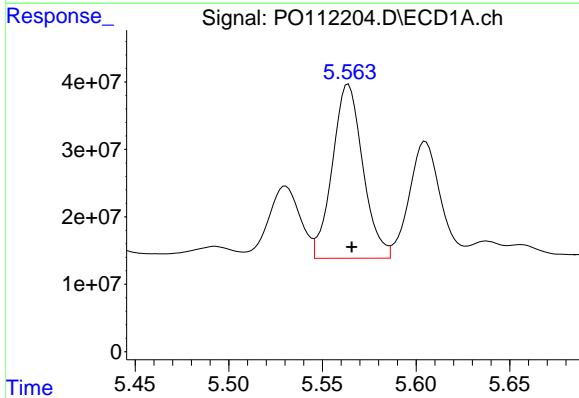
R.T.: 5.605 min
 Delta R.T.: -0.004 min
 Response: 201056160
 Conc: 515.13 ng/ml

Instrument :
 ECD_O
 ClientSampleId :
 AR1248CCC500



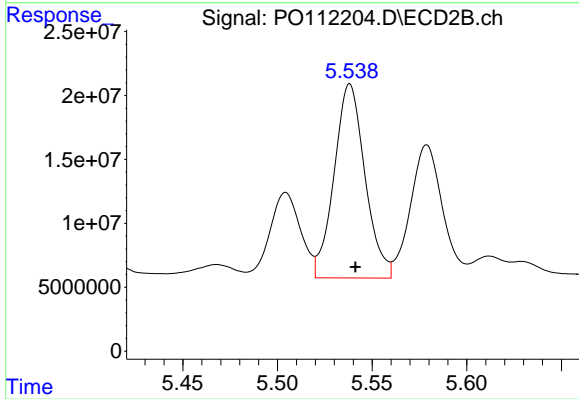
#25 AR-1248-5

R.T.: 5.579 min
 Delta R.T.: -0.003 min
 Response: 123577373
 Conc: 493.23 ng/ml



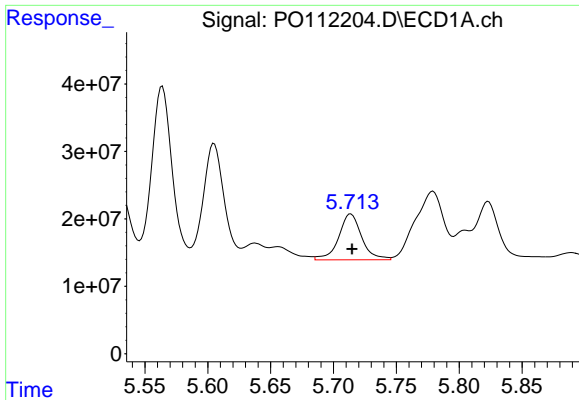
#26 AR-1254-1

R.T.: 5.564 min
 Delta R.T.: -0.002 min
 Response: 292393700
 Conc: 475.35 ng/ml



#26 AR-1254-1

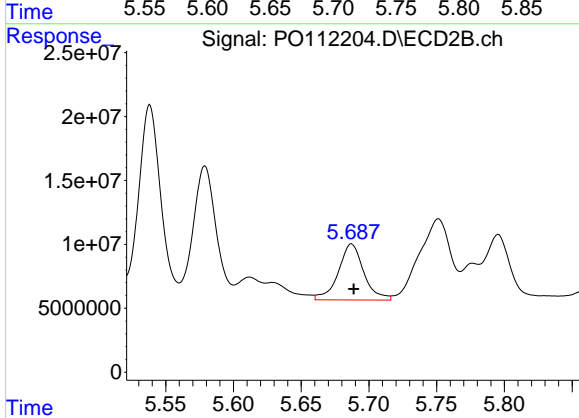
R.T.: 5.538 min
 Delta R.T.: -0.003 min
 Response: 172396760
 Conc: 452.29 ng/ml



#27 AR-1254-2

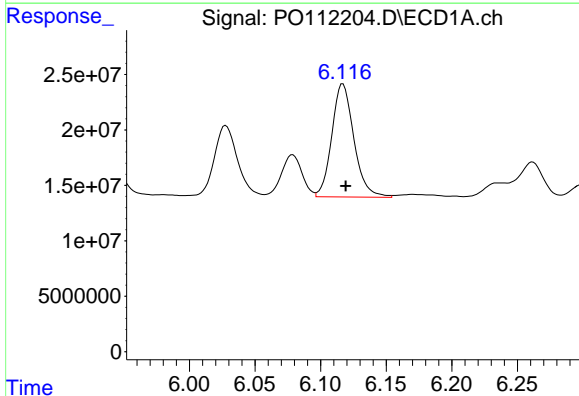
R.T.: 5.714 min
 Delta R.T.: -0.001 min
 Response: 86651043
 Conc: 161.76 ng/ml

Instrument :
 ECD_O
 ClientSampleId :
 AR1248CCC500



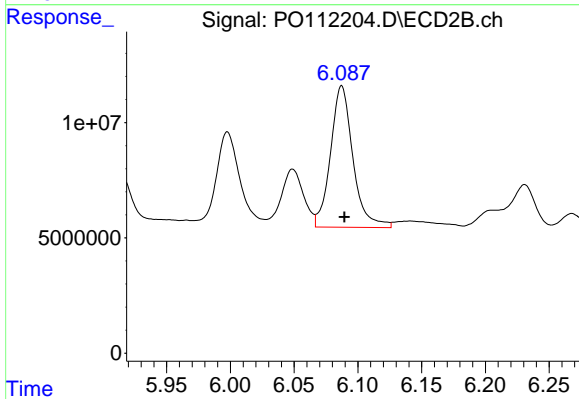
#27 AR-1254-2

R.T.: 5.687 min
 Delta R.T.: -0.002 min
 Response: 57271599
 Conc: 172.60 ng/ml



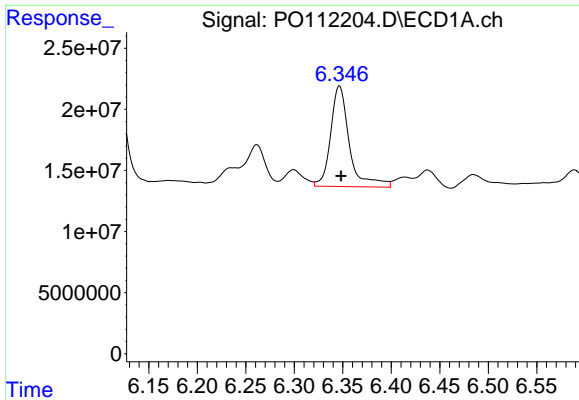
#28 AR-1254-3

R.T.: 6.117 min
 Delta R.T.: -0.002 min
 Response: 119708605
 Conc: 142.58 ng/ml



#28 AR-1254-3

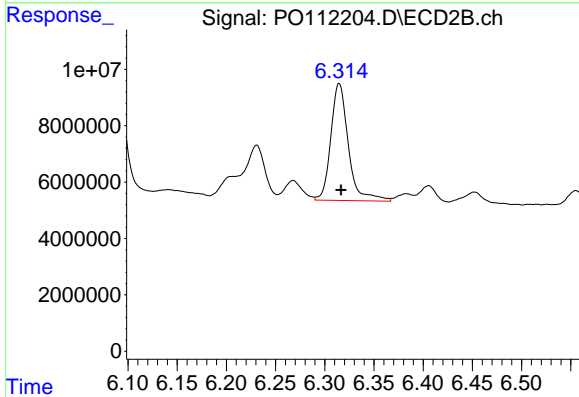
R.T.: 6.087 min
 Delta R.T.: -0.002 min
 Response: 75239752
 Conc: 156.09 ng/ml



#29 AR-1254-4

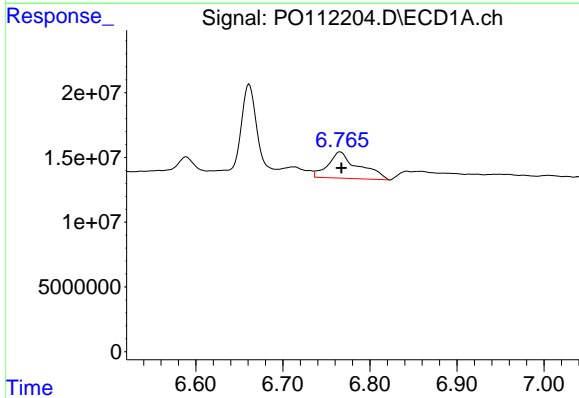
R.T.: 6.347 min
 Delta R.T.: -0.002 min
 Response: 110690627
 Conc: 230.12 ng/ml

Instrument :
 ECD_O
 ClientSampleId :
 AR1248CCC500



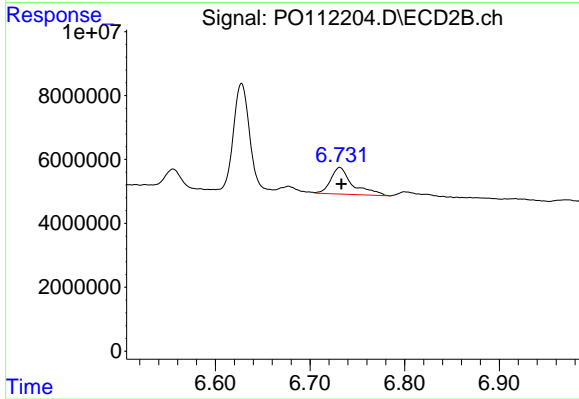
#29 AR-1254-4

R.T.: 6.315 min
 Delta R.T.: -0.002 min
 Response: 51592324
 Conc: 197.90 ng/ml



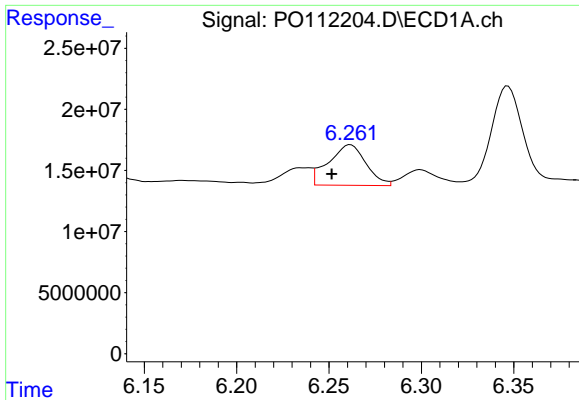
#30 AR-1254-5

R.T.: 6.766 min
 Delta R.T.: -0.002 min
 Response: 49660573
 Conc: 64.17 ng/ml



#30 AR-1254-5

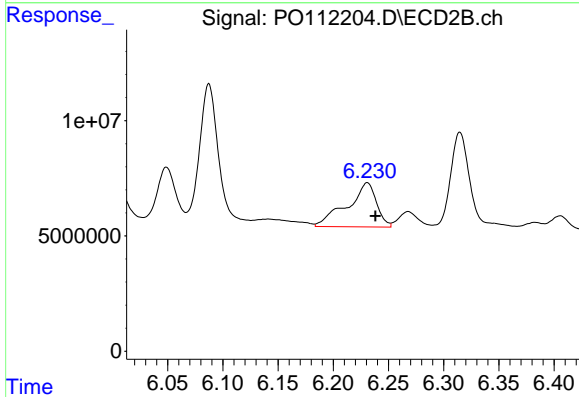
R.T.: 6.731 min
 Delta R.T.: -0.002 min
 Response: 13430556
 Conc: 37.69 ng/ml



#31 AR-1260-1

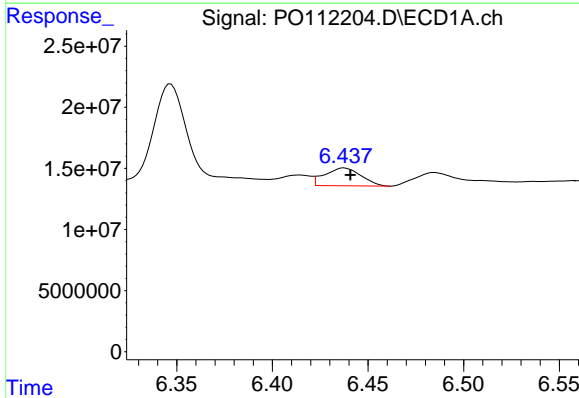
R.T.: 6.262 min
 Delta R.T.: 0.010 min
 Response: 46772881
 Conc: 93.31 ng/ml

Instrument :
 ECD_O
 ClientSampleId :
 AR1248CCC500



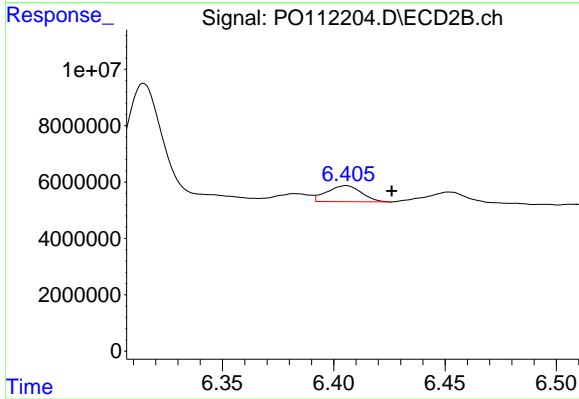
#31 AR-1260-1

R.T.: 6.231 min
 Delta R.T.: -0.007 min
 Response: 35469993
 Conc: 126.42 ng/ml



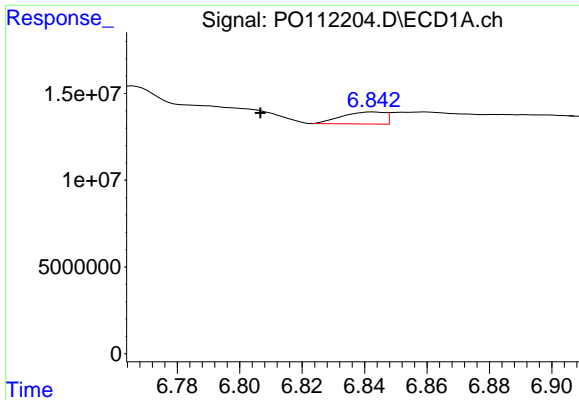
#32 AR-1260-2

R.T.: 6.438 min
 Delta R.T.: -0.003 min
 Response: 19297476
 Conc: 26.14 ng/ml



#32 AR-1260-2

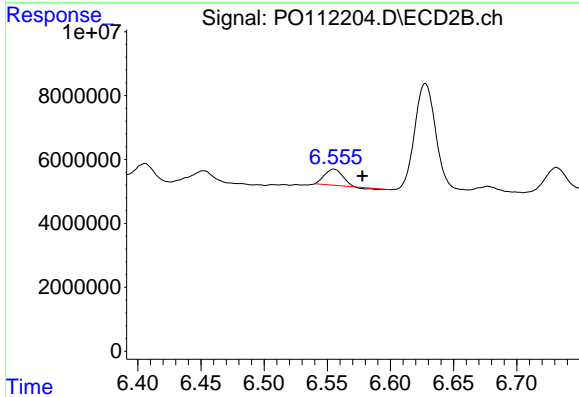
R.T.: 6.406 min
 Delta R.T.: -0.020 min
 Response: 6122013
 Conc: 18.01 ng/ml



#33 AR-1260-3

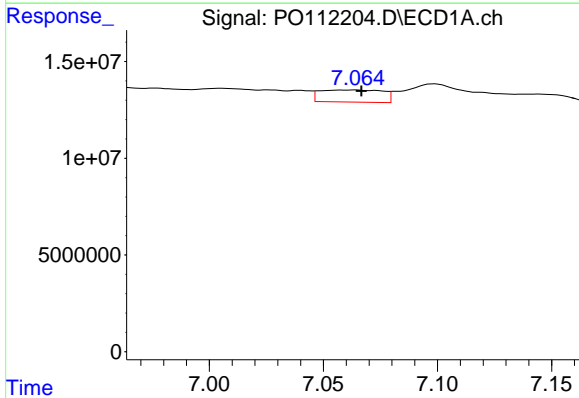
R.T.: 6.843 min
 Delta R.T.: 0.036 min
 Response: 6565741
 Conc: 10.02 ng/ml

Instrument :
 ECD_O
 ClientSampleId :
 AR1248CCC500



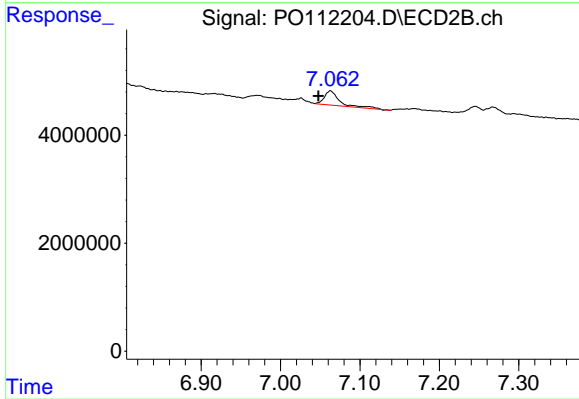
#33 AR-1260-3

R.T.: 6.555 min
 Delta R.T.: -0.023 min
 Response: 4731355
 Conc: 17.17 ng/ml



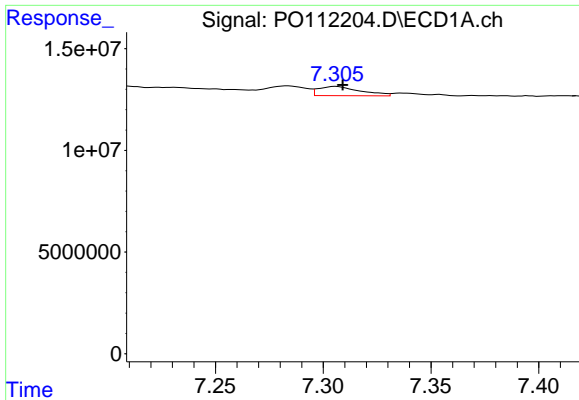
#34 AR-1260-4

R.T.: 7.064 min
 Delta R.T.: -0.002 min
 Response: 11996176
 Conc: 27.56 ng/ml



#34 AR-1260-4

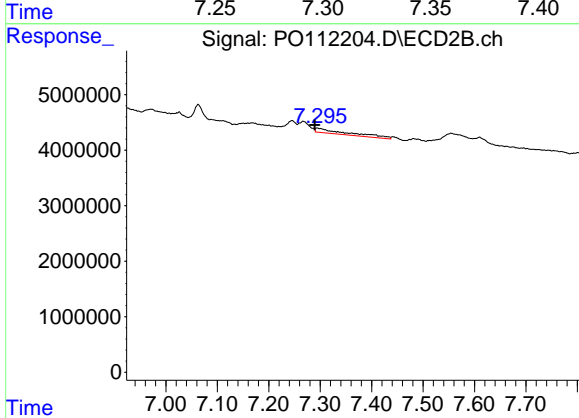
R.T.: 7.063 min
 Delta R.T.: 0.015 min
 Response: 3595228
 Conc: 17.92 ng/ml



#35 AR-1260-5

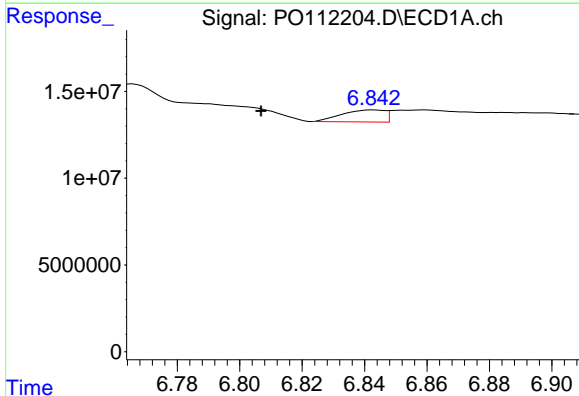
R.T.: 7.306 min
 Delta R.T.: -0.003 min
 Response: 6164106
 Conc: 4.88 ng/ml

Instrument :
 ECD_O
 ClientSampleId :
 AR1248CCC500



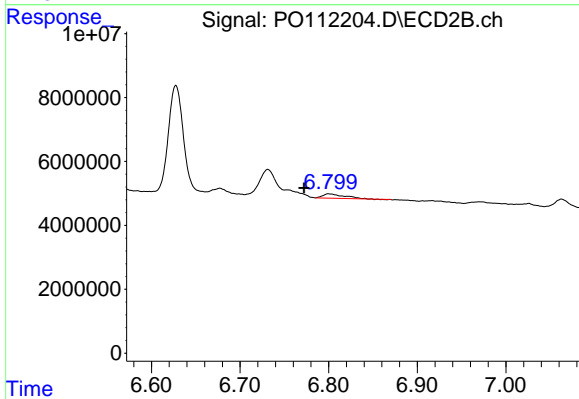
#35 AR-1260-5

R.T.: 7.294 min
 Delta R.T.: 0.004 min
 Response: 3810138
 Conc: 8.51 ng/ml



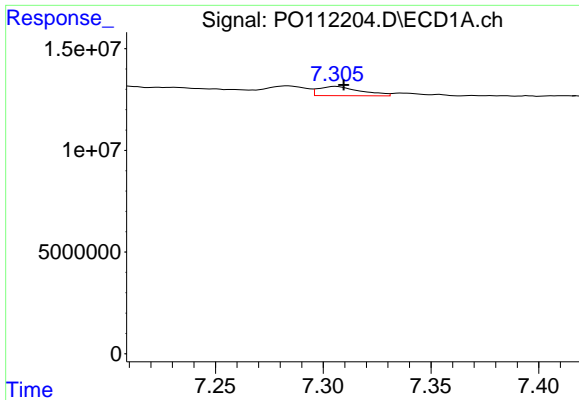
#36 AR-1262-1

R.T.: 6.843 min
 Delta R.T.: 0.036 min
 Response: 6565741
 Conc: 6.43 ng/ml



#36 AR-1262-1

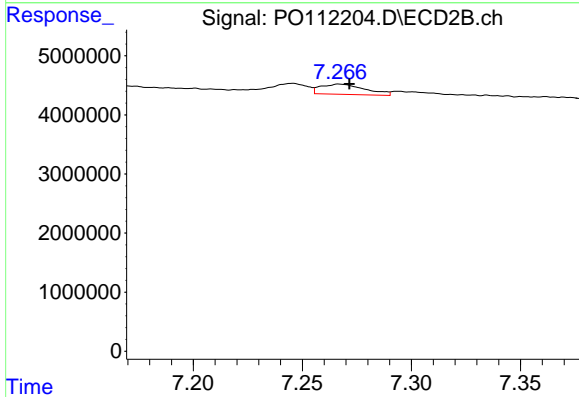
R.T.: 6.800 min
 Delta R.T.: 0.028 min
 Response: 2199625
 Conc: 5.40 ng/ml



#37 AR-1262-2

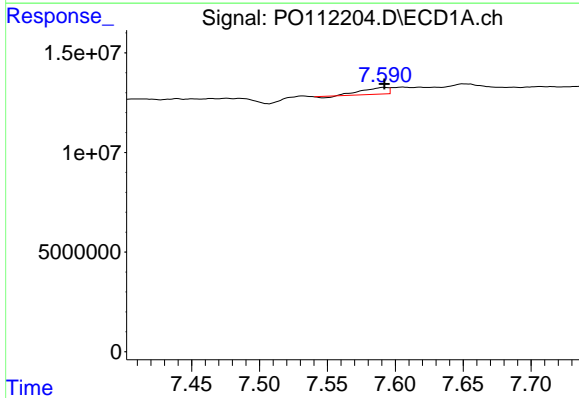
R.T.: 7.306 min
 Delta R.T.: -0.004 min
 Response: 6164106
 Conc: 3.76 ng/ml

Instrument :
 ECD_O
 ClientSampleId :
 AR1248CCC500



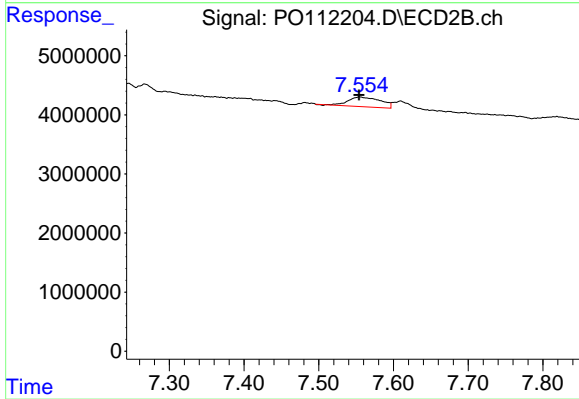
#37 AR-1262-2

R.T.: 7.267 min
 Delta R.T.: -0.005 min
 Response: 2460193
 Conc: 4.80 ng/ml



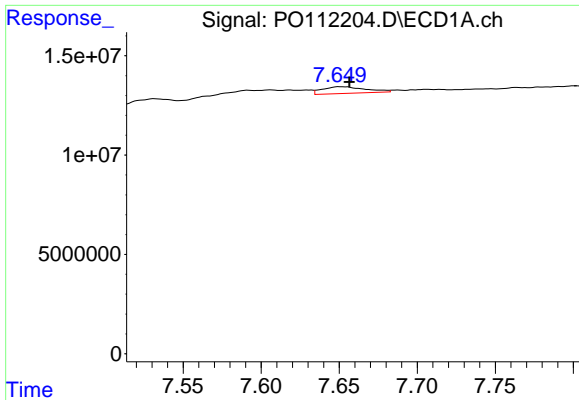
#38 AR-1262-3

R.T.: 7.592 min
 Delta R.T.: 0.000 min
 Response: 4111452
 Conc: 6.40 ng/ml



#38 AR-1262-3

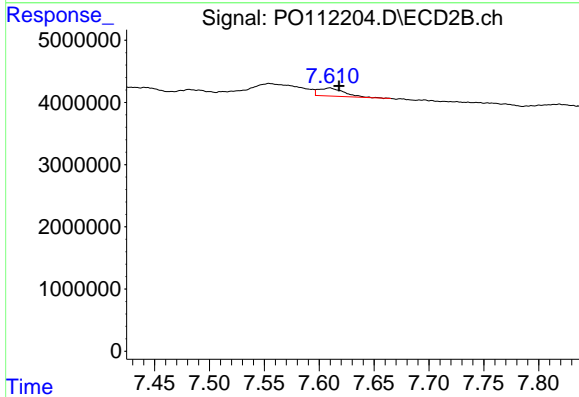
R.T.: 7.555 min
 Delta R.T.: 0.000 min
 Response: 4995754
 Conc: 27.83 ng/ml



#39 AR-1262-4

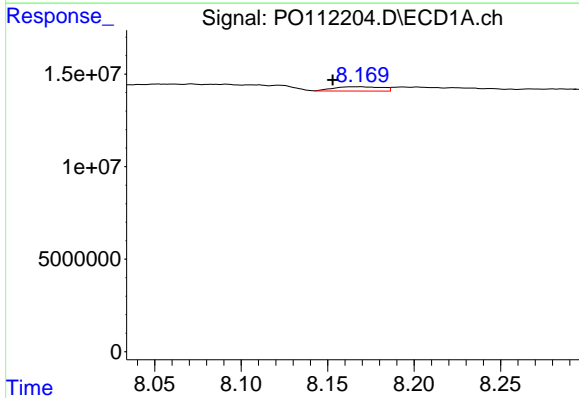
R.T.: 7.650 min
 Delta R.T.: -0.006 min
 Response: 6555685
 Conc: 6.12 ng/ml

Instrument :
 ECD_O
 ClientSampleId :
 AR1248CCC500



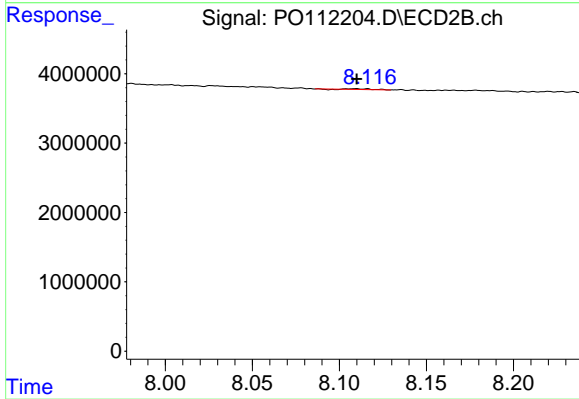
#39 AR-1262-4

R.T.: 7.610 min
 Delta R.T.: -0.008 min
 Response: 2076558
 Conc: 7.14 ng/ml



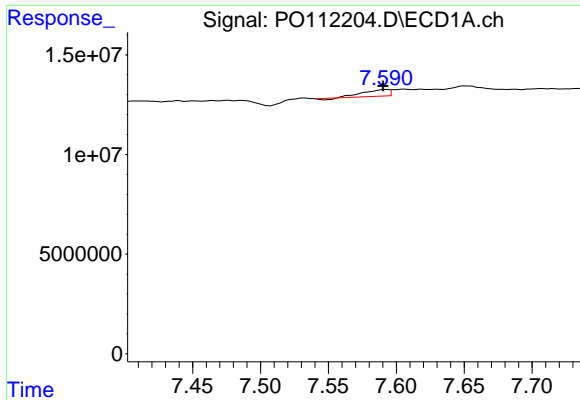
#40 AR-1262-5

R.T.: 8.169 min
 Delta R.T.: 0.016 min
 Response: 4515973
 Conc: 10.08 ng/ml



#40 AR-1262-5

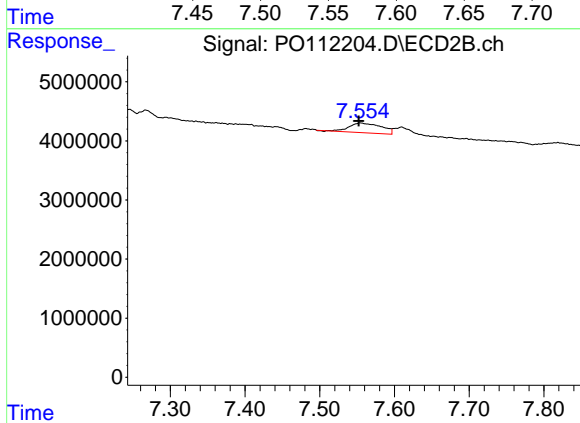
R.T.: 8.109 min
 Delta R.T.: 0.000 min
 Response: 104673
 Conc: 0.99 ng/ml



#41 AR-1268-1

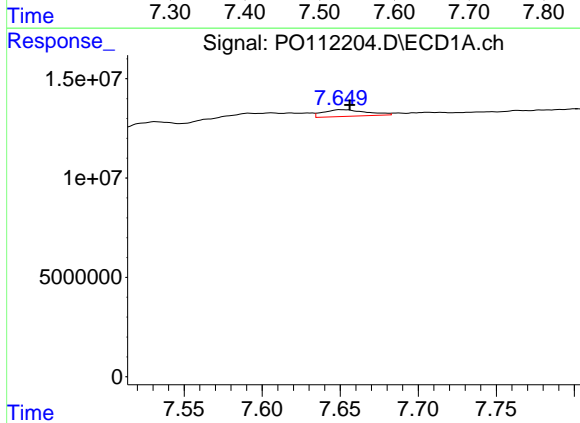
R.T.: 7.592 min
 Delta R.T.: 0.001 min
 Response: 4111452
 Conc: 2.24 ng/ml

Instrument :
 ECD_O
 ClientSampleId :
 AR1248CCC500



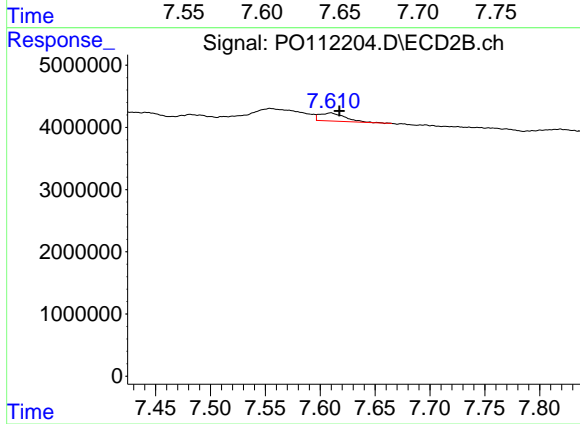
#41 AR-1268-1

R.T.: 7.555 min
 Delta R.T.: 0.002 min
 Response: 4995754
 Conc: 10.17 ng/ml



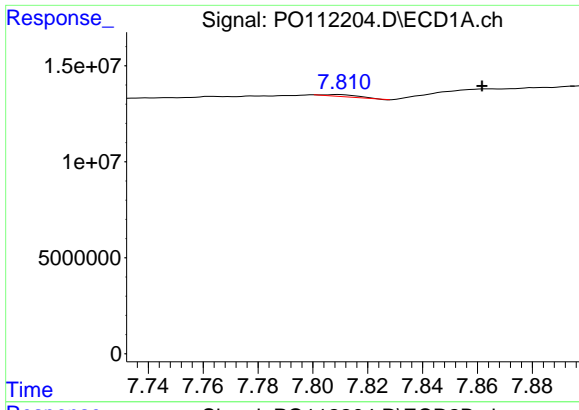
#42 AR-1268-2

R.T.: 7.650 min
 Delta R.T.: -0.006 min
 Response: 6555685
 Conc: 4.21 ng/ml



#42 AR-1268-2

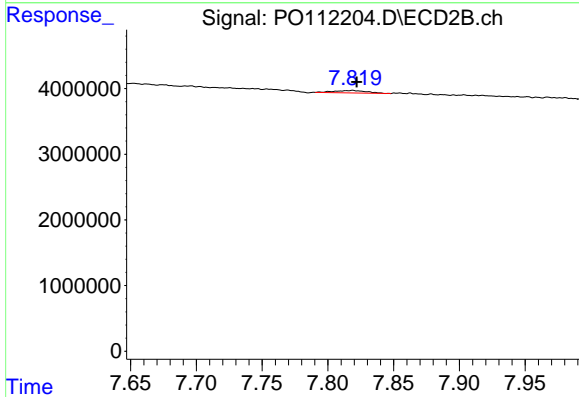
R.T.: 7.610 min
 Delta R.T.: -0.008 min
 Response: 2076558
 Conc: 4.98 ng/ml



#43 AR-1268-3

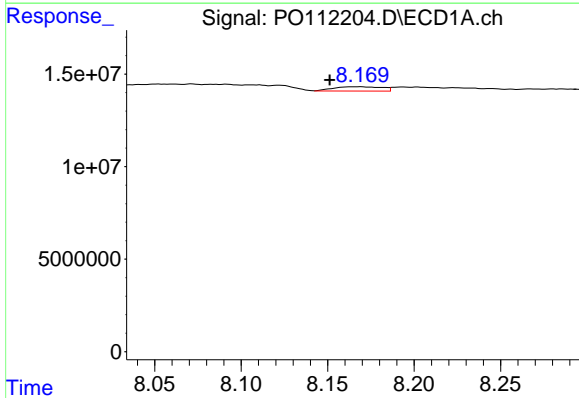
R.T.: 7.810 min
 Delta R.T.: -0.052 min
 Response: 916915
 Conc: 0.71 ng/ml

Instrument :
 ECD_O
 ClientSampleId :
 AR1248CCC500



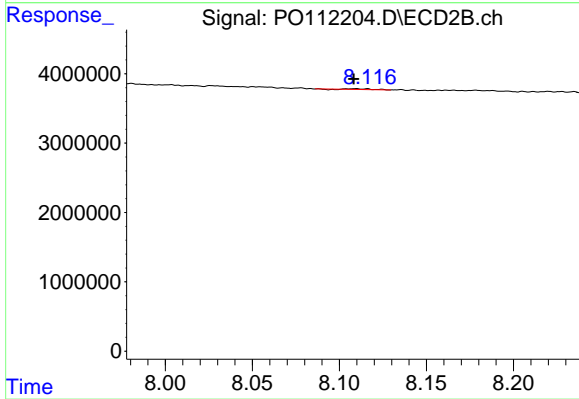
#43 AR-1268-3

R.T.: 7.819 min
 Delta R.T.: -0.003 min
 Response: 617368
 Conc: 1.95 ng/ml



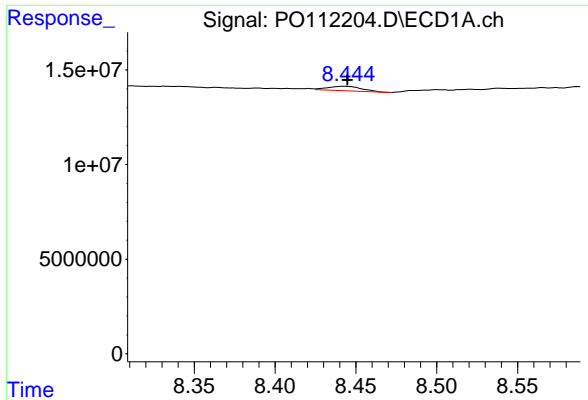
#44 AR-1268-4

R.T.: 8.169 min
 Delta R.T.: 0.018 min
 Response: 4515973
 Conc: 9.40 ng/ml



#44 AR-1268-4

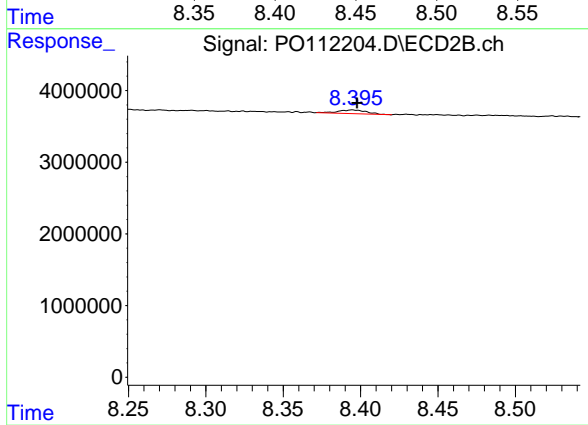
R.T.: 8.109 min
 Delta R.T.: 0.001 min
 Response: 104673
 Conc: 0.94 ng/ml



#45 AR-1268-5

R.T.: 8.443 min
Delta R.T.: -0.002 min
Response: 3423229
Conc: 1.05 ng/ml

Instrument :
ECD_O
ClientSampleId :
AR1248CCC500



#45 AR-1268-5

R.T.: 8.395 min
Delta R.T.: -0.003 min
Response: 676313
Conc: 0.93 ng/ml