

Data Path : Z:\pestpcbsrv\HPCHEM1\ECD_0\Data\P0071025\
 Data File : PO112205.D
 Signal(s) : Signal #1: ECD1A.ch Signal #2: ECD2B.ch
 Acq On : 10 Jul 2025 22:01
 Operator : YP/AJ
 Sample : AR1254CCC500
 Misc :
 ALS Vial : 6 Sample Multiplier: 1

Instrument :
 ECD_0
 ClientSampleId :
 AR1254CCC500

Integration File signal 1: autoint1.e
 Integration File signal 2: autoint2.e
 Quant Time: Jul 10 22:58:49 2025
 Quant Method : Z:\pestpcbsrv\HPCHEM1\ECD_0\methods\P0070825.M
 Quant Title : GC EXTRACTABLES
 QLast Update : Wed Jul 09 10:50:50 2025
 Response via : Initial Calibration
 Integrator: ChemStation

Volume Inj. : 2 µl
 Signal #1 Phase : ZB-MR2 Signal #2 Phase: ZB-MR2
 Signal #1 Info : 30Mx0.32mmx 0.50µ Signal #2 Info : 30M x 0.32mm x 0.25µm

Compound	RT#1	RT#2	Resp#1	Resp#2	ng/ml	ng/ml
System Monitoring Compounds						
1) SA Tetrachlo...	3.672	3.665	526.8E6	320.9E6	53.237	50.376
2) SA Decachlor...	8.700	8.648	331.8E6	87324768	48.533	50.668
Target Compounds						
3) L1 AR-1016-1	4.760	4.760	4594667	3244428	13.509	14.560
4) L1 AR-1016-2	4.778	4.791	3783936	2156112	7.609	6.552
5) L1 AR-1016-3	4.833	4.935	4058568	1781277	12.538	10.486
6) L1 AR-1016-4	4.954	4.977	4647404	71208648	18.097	518.909 #
7) L1 AR-1016-5	5.211	5.189	97232834	54019616	355.303	313.247
9) L2 AR-1221-2	3.974	3.963	5922379	4625119	75.118	77.925
10) L2 AR-1221-3	4.047	4.035	1004634	764658	3.727	4.051
11) L3 AR-1232-1	4.047	4.035	1004634	764658	4.680	5.094
12) L3 AR-1232-2	4.539	4.760	2904577	3244428	25.560	21.194
13) L3 AR-1232-3	4.778	4.935	3783936	1781277	16.523	23.591 #
14) L3 AR-1232-4	4.954	5.018	4647404	21995463	40.661	333.324 #
15) L3 AR-1232-5	4.998	5.189	105.9E6	54019616	1443.391	727.440 #
16) L4 AR-1242-1	4.760	4.740	4594667	4467892	15.864	23.047 #
17) L4 AR-1242-2	4.778	4.760	3783936	3244428	8.884	11.450 #
18) L4 AR-1242-3	4.833	4.935	4058568	1781277	14.829	12.228
19) L4 AR-1242-4	4.954	5.018	4647404	21995463	20.626	155.072 #
20) L4 AR-1242-5	5.606	5.539	44374281	187.4E6	209.638	1031.015 #
21) L5 AR-1248-1	4.760	4.740	4594667	4467892	20.250	28.943 #
22) L5 AR-1248-2	4.998	4.977	105.9E6	71208648	343.615	346.063
23) L5 AR-1248-3	5.211	5.018	97232834	21995463	238.714	102.400 #
24) L5 AR-1248-4	5.565	5.189	320.8E6	54019616	555.920	208.790 #
25) L5 AR-1248-5	5.606	5.579	44374281	28214637	113.691	112.611
26) L6 AR-1254-1	5.565	5.539	320.8E6	187.4E6	521.608	491.569
27) L6 AR-1254-2	5.714	5.688	277.2E6	161.8E6	517.395	487.627
28) L6 AR-1254-3	6.118	6.088	411.7E6	229.4E6	490.352	475.877
29) L6 AR-1254-4	6.348	6.316	294.5E6	139.2E6	612.144	533.852
30) L6 AR-1254-5	6.767	6.733	398.0E6	172.7E6	514.238	484.678
31) L7 AR-1260-1	6.249	6.219	188.3E6	107.3E6	375.672	382.524
32) L7 AR-1260-2	6.439	6.406	193.3E6	88549125	261.855	260.441
33) L7 AR-1260-3	6.837	6.557	33002298	67318991	50.348	244.276 #
34) L7 AR-1260-4	7.065	7.064	24761569	35885162	56.891	178.849 #
35) L7 AR-1260-5	7.307	7.299	42923111	5200909	33.998	11.616 #
36) L8 AR-1262-1	6.837	6.801	33002298	14063084	32.302	34.526
37) L8 AR-1262-2	7.307	7.269	42923111	17265283	26.183	33.685 #
38) L8 AR-1262-3	7.597	7.556	7756795	6378561	12.083	35.530 #
39) L8 AR-1262-4	7.652	7.611	37427867	13944373	34.932	47.932 #
40) L8 AR-1262-5	8.157	8.106	13254023	296198	29.576	2.800 #
41) L9 AR-1268-1	7.597	7.556	7756795	6378561	4.221	12.979 #
42) L9 AR-1268-2	7.652	7.611	37427867	13944373	24.029	33.425 #

Data Path : Z:\pestpcbsrv\HPCHEM1\ECD_0\Data\P0071025\
 Data File : PO112205.D
 Signal(s) : Signal #1: ECD1A.ch Signal #2: ECD2B.ch
 Acq On : 10 Jul 2025 22:01
 Operator : YP/AJ
 Sample : AR1254CCC500
 Misc :
 ALS Vial : 6 Sample Multiplier: 1

Instrument :
 ECD_0
 ClientSampleId :
 AR1254CCC500

Integration File signal 1: autoint1.e
 Integration File signal 2: autoint2.e
 Quant Time: Jul 10 22:58:49 2025
 Quant Method : Z:\pestpcbsrv\HPCHEM1\ECD_0\methods\P0070825.M
 Quant Title : GC EXTRACTABLES
 QLast Update : Wed Jul 09 10:50:50 2025
 Response via : Initial Calibration
 Integrator: ChemStation

Volume Inj. : 2 µl
 Signal #1 Phase : ZB-MR1 Signal #2 Phase: ZB-MR2
 Signal #1 Info : 30Mx0.32mmx 0.50µ Signal #2 Info : 30M x 0.32mm x 0.25µm

	Compound	RT#1	RT#2	Resp#1	Resp#2	ng/ml	ng/ml
43)	L9 AR-1268-3	7.871	7.820	719575	337481	0.554	1.067 #
44)	L9 AR-1268-4	8.157	8.106	13254023	296198	27.589	2.656 #
45)	L9 AR-1268-5	8.444	8.398	2147374	674693	0.658	0.929 #

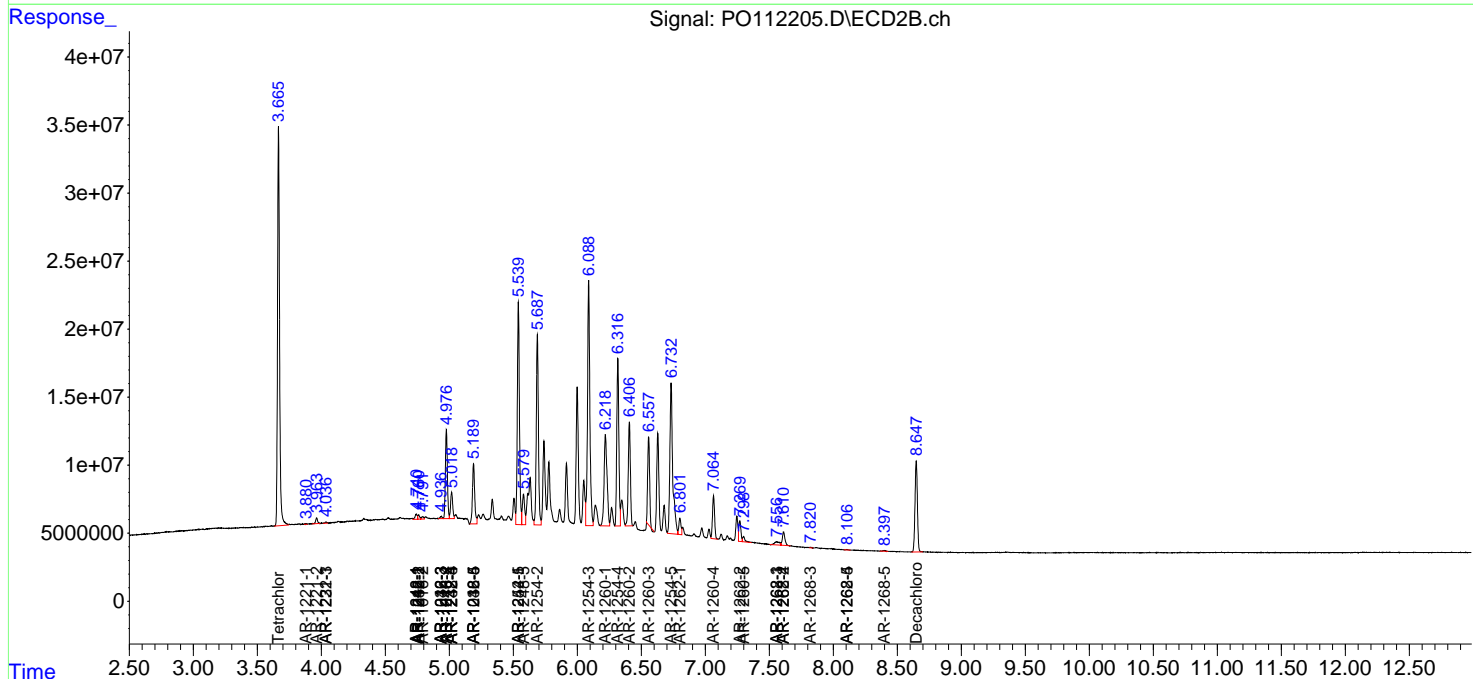
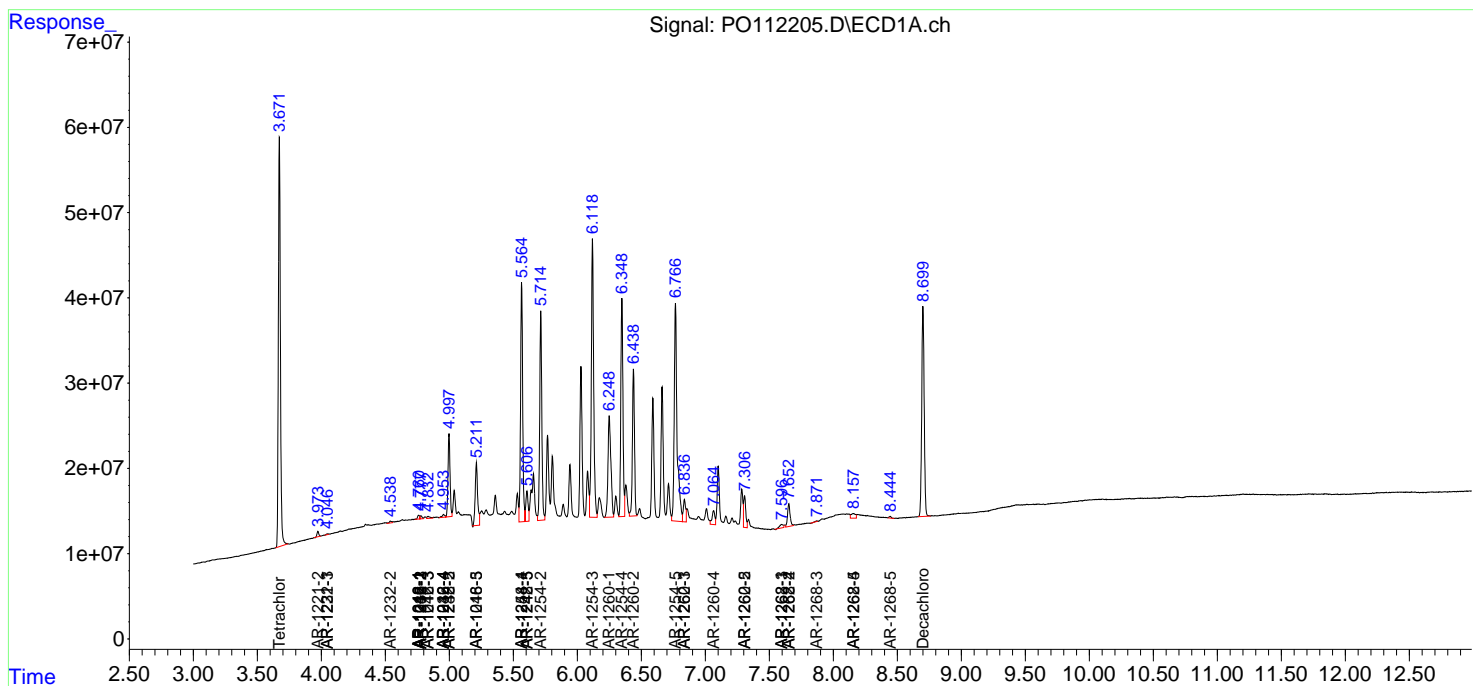
(f)=RT Delta > 1/2 Window (#)=Amounts differ by > 25% (m)=manual int.

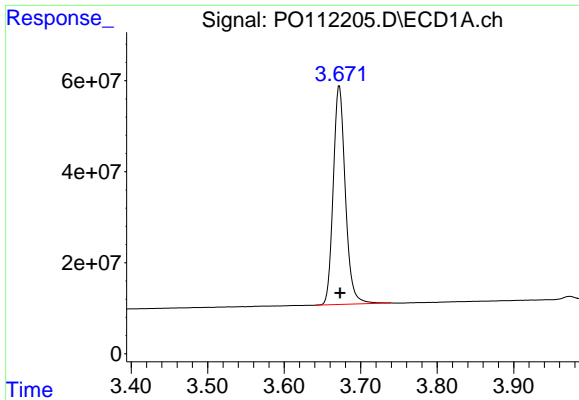
Data Path : Z:\pestpcbsrv\HPCHEM1\ECD_O\Data\PO071025\
 Data File : PO112205.D
 Signal(s) : Signal #1: ECD1A.ch Signal #2: ECD2B.ch
 Acq On : 10 Jul 2025 22:01
 Operator : YP/AJ
 Sample : AR1254CCC500
 Misc :
 ALS Vial : 6 Sample Multiplier: 1

Instrument :
 ECD_O
 ClientSampleId :
 AR1254CCC500

Integration File signal 1: autoint1.e
 Integration File signal 2: autoint2.e
 Quant Time: Jul 10 22:58:49 2025
 Quant Method : Z:\pestpcbsrv\HPCHEM1\ECD_O\methods\PO070825.M
 Quant Title : GC EXTRACTABLES
 QLast Update : Wed Jul 09 10:50:50 2025
 Response via : Initial Calibration
 Integrator: ChemStation

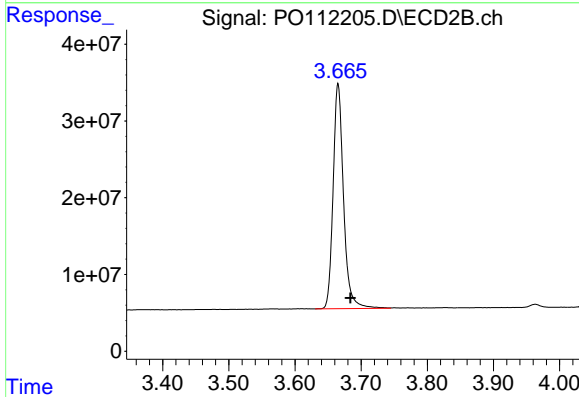
Volume Inj. : 2 µl
 Signal #1 Phase : ZB-MR1 Signal #2 Phase: ZB-MR2
 Signal #1 Info : 30Mx0.32mmx 0.50µ Signal #2 Info : 30M x 0.32mm x 0.25µm



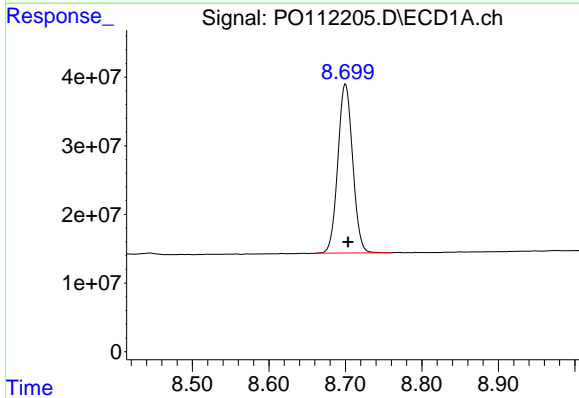


#1 Tetrachloro-m-xylene
 R.T.: 3.672 min
 Delta R.T.: 0.000 min
 Response: 526768722
 Conc: 53.24 ng/ml

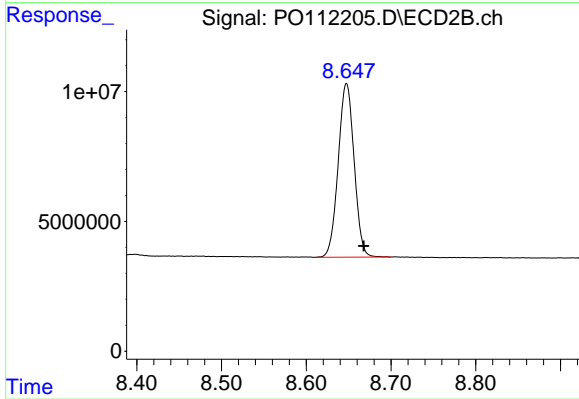
Instrument :
 ECD_O
 ClientSampleId :
 AR1254CCC500



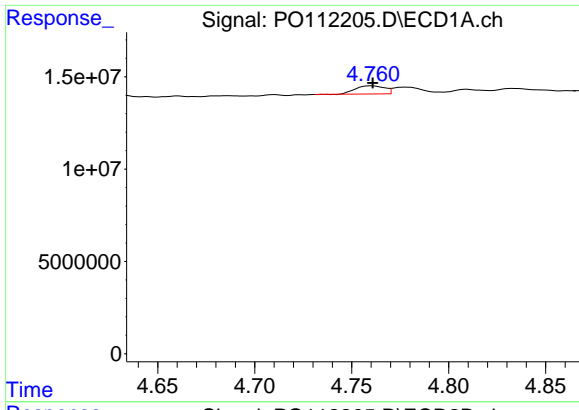
#1 Tetrachloro-m-xylene
 R.T.: 3.665 min
 Delta R.T.: -0.018 min
 Response: 320946494
 Conc: 50.38 ng/ml



#2 Decachlorobiphenyl
 R.T.: 8.700 min
 Delta R.T.: -0.003 min
 Response: 331823131
 Conc: 48.53 ng/ml



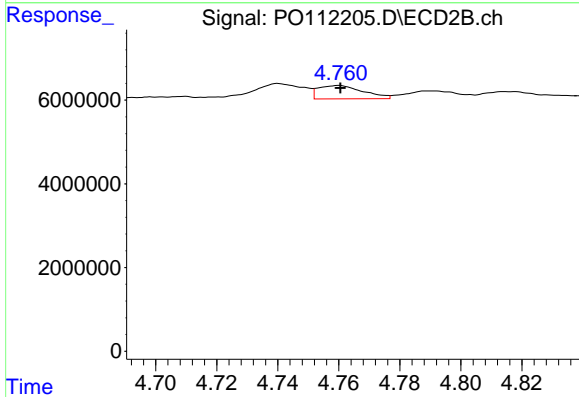
#2 Decachlorobiphenyl
 R.T.: 8.648 min
 Delta R.T.: -0.020 min
 Response: 87324768
 Conc: 50.67 ng/ml



#3 AR-1016-1

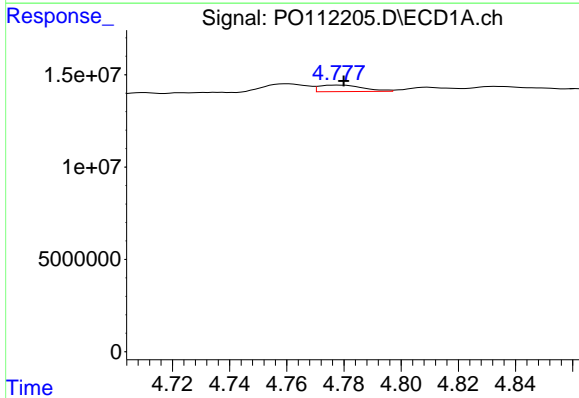
R.T.: 4.760 min
 Delta R.T.: 0.000 min
 Response: 4594667
 Conc: 13.51 ng/ml

Instrument :
 ECD_O
 ClientSampleId :
 AR1254CCC500



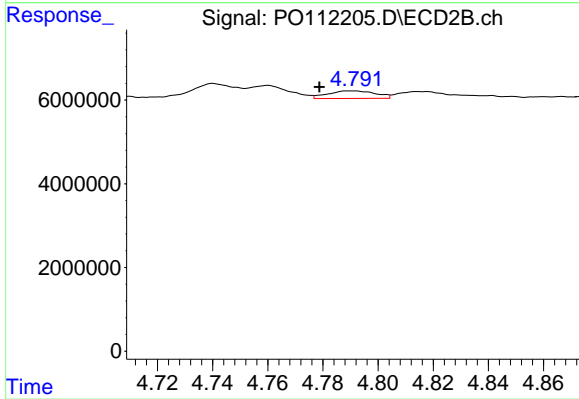
#3 AR-1016-1

R.T.: 4.760 min
 Delta R.T.: 0.000 min
 Response: 3244428
 Conc: 14.56 ng/ml



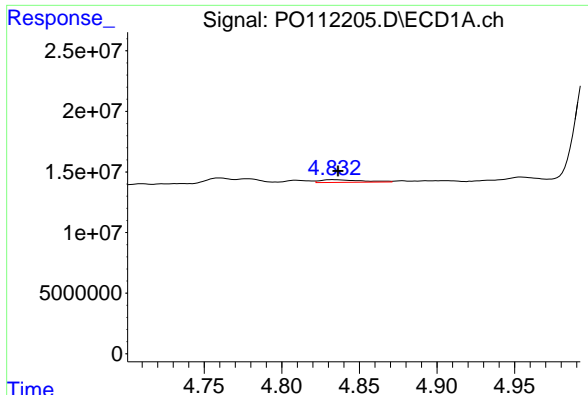
#4 AR-1016-2

R.T.: 4.778 min
 Delta R.T.: -0.002 min
 Response: 3783936
 Conc: 7.61 ng/ml



#4 AR-1016-2

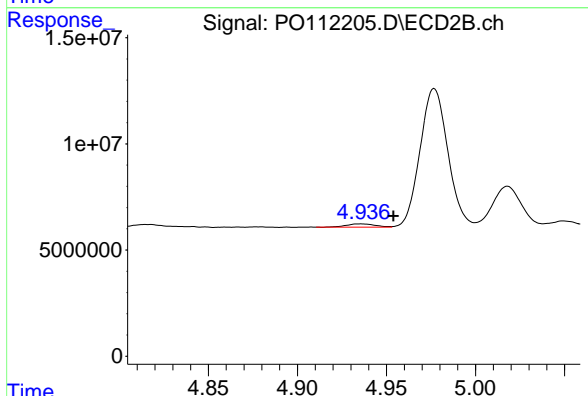
R.T.: 4.791 min
 Delta R.T.: 0.012 min
 Response: 2156112
 Conc: 6.55 ng/ml



#5 AR-1016-3

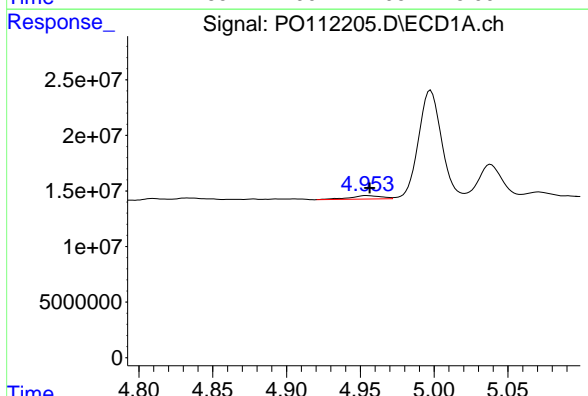
R.T.: 4.833 min
 Delta R.T.: -0.003 min
 Response: 4058568
 Conc: 12.54 ng/ml

Instrument :
 ECD_O
 ClientSampleId :
 AR1254CCC500



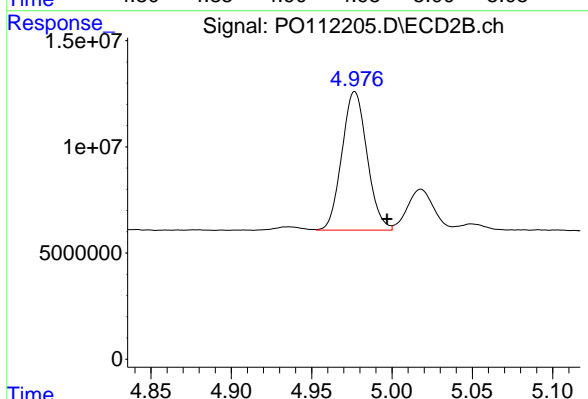
#5 AR-1016-3

R.T.: 4.935 min
 Delta R.T.: -0.019 min
 Response: 1781277
 Conc: 10.49 ng/ml



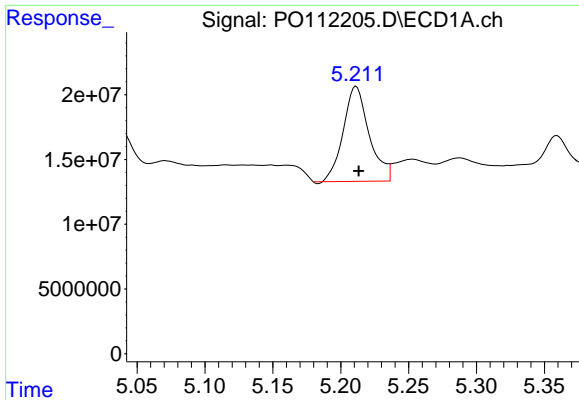
#6 AR-1016-4

R.T.: 4.954 min
 Delta R.T.: -0.002 min
 Response: 4647404
 Conc: 18.10 ng/ml



#6 AR-1016-4

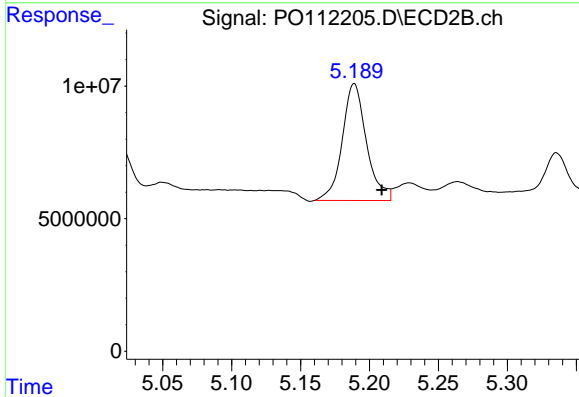
R.T.: 4.977 min
 Delta R.T.: -0.020 min
 Response: 71208648
 Conc: 518.91 ng/ml



#7 AR-1016-5

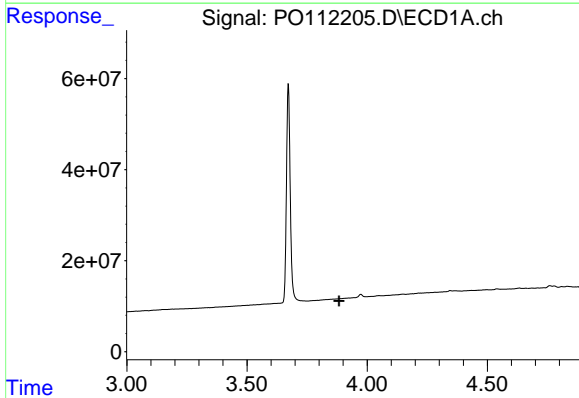
R.T.: 5.211 min
 Delta R.T.: -0.002 min
 Response: 97232834
 Conc: 355.30 ng/ml

Instrument :
 ECD_O
 ClientSampleId :
 AR1254CCC500



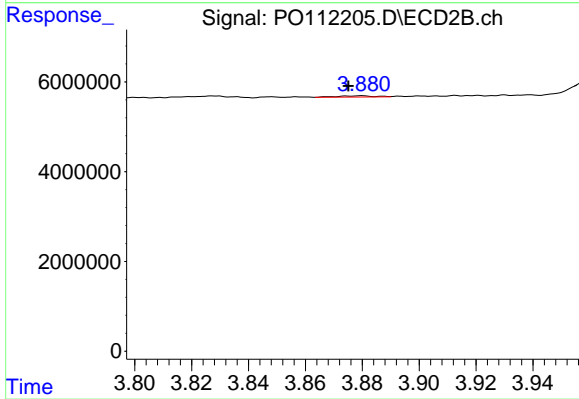
#7 AR-1016-5

R.T.: 5.189 min
 Delta R.T.: -0.020 min
 Response: 54019616
 Conc: 313.25 ng/ml



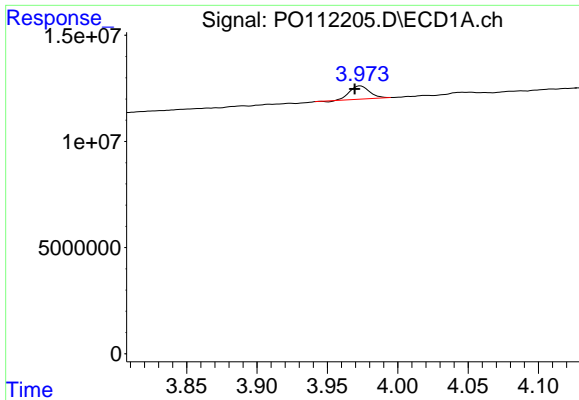
#8 AR-1221-1

R.T.: 3.924 min
 Delta R.T.: 0.041 min
 Response: -2223580
 Conc: N.D.



#8 AR-1221-1

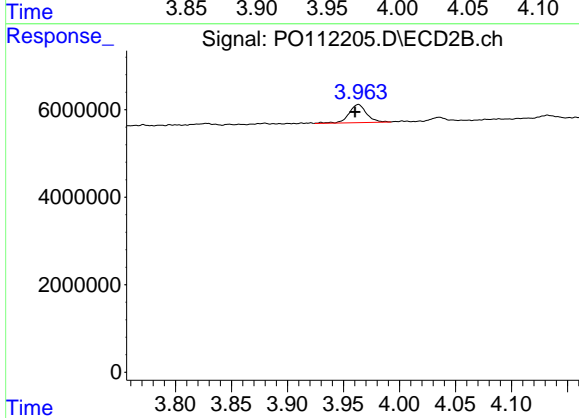
R.T.: 3.880 min
 Delta R.T.: 0.005 min
 Response: 253877
 Conc: 3.08 ng/ml



#9 AR-1221-2

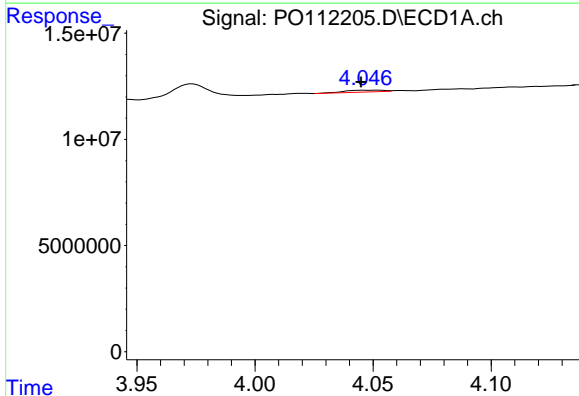
R.T.: 3.974 min
 Delta R.T.: 0.004 min
 Response: 5922379
 Conc: 75.12 ng/ml

Instrument :
 ECD_O
 ClientSampleId :
 AR1254CCC500



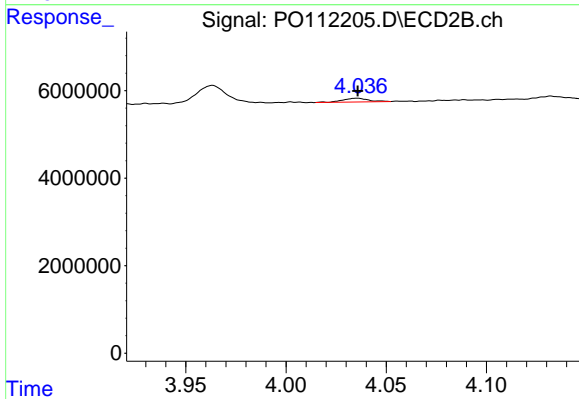
#9 AR-1221-2

R.T.: 3.963 min
 Delta R.T.: 0.003 min
 Response: 4625119
 Conc: 77.92 ng/ml



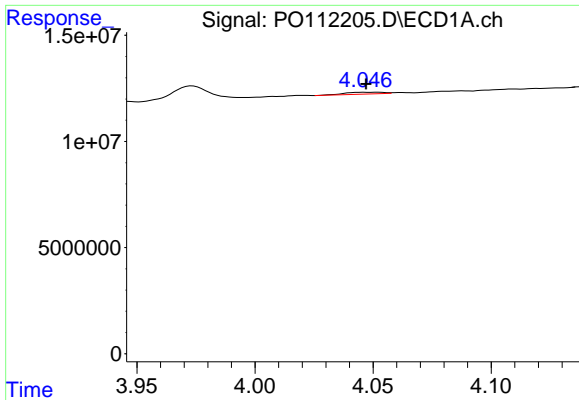
#10 AR-1221-3

R.T.: 4.047 min
 Delta R.T.: 0.002 min
 Response: 1004634
 Conc: 3.73 ng/ml



#10 AR-1221-3

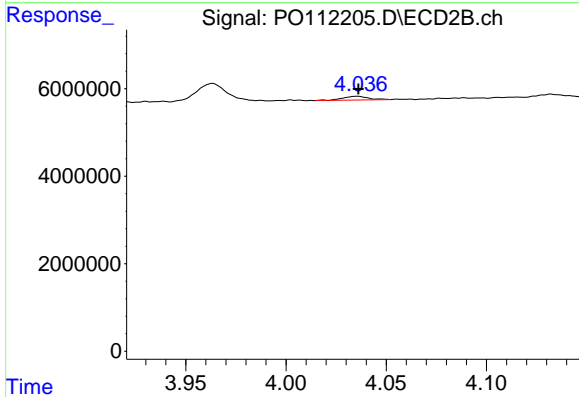
R.T.: 4.035 min
 Delta R.T.: 0.000 min
 Response: 764658
 Conc: 4.05 ng/ml



#11 AR-1232-1

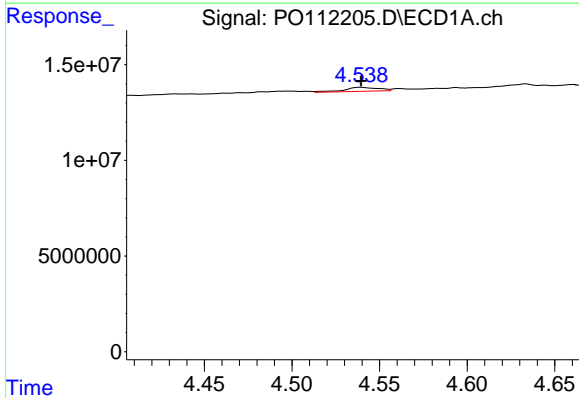
R.T.: 4.047 min
 Delta R.T.: 0.000 min
 Response: 1004634
 Conc: 4.68 ng/ml

Instrument :
 ECD_O
 ClientSampleId :
 AR1254CCC500



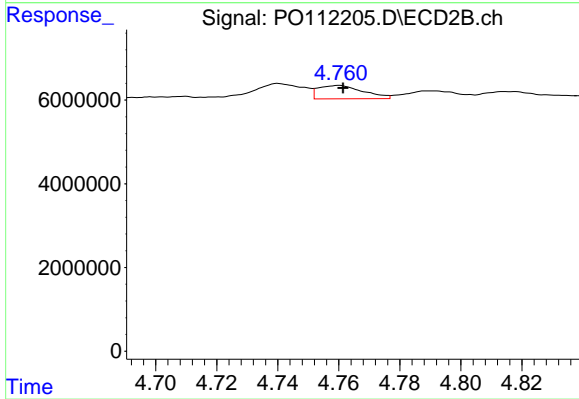
#11 AR-1232-1

R.T.: 4.035 min
 Delta R.T.: 0.000 min
 Response: 764658
 Conc: 5.09 ng/ml



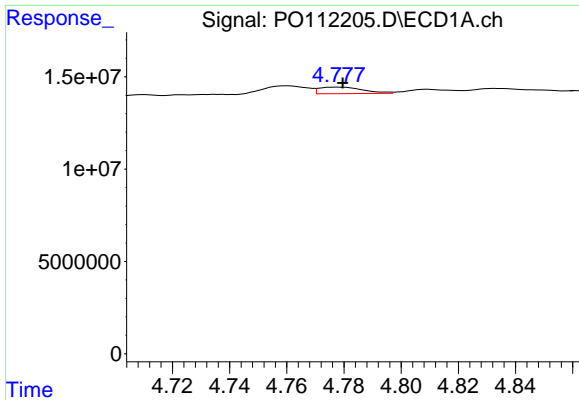
#12 AR-1232-2

R.T.: 4.539 min
 Delta R.T.: 0.000 min
 Response: 2904577
 Conc: 25.56 ng/ml



#12 AR-1232-2

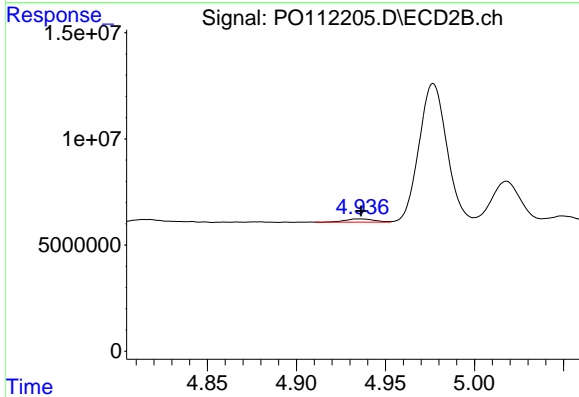
R.T.: 4.760 min
 Delta R.T.: -0.002 min
 Response: 3244428
 Conc: 21.19 ng/ml



#13 AR-1232-3

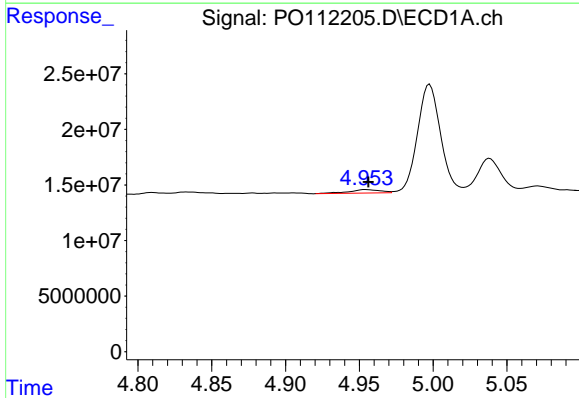
R.T.: 4.778 min
 Delta R.T.: -0.002 min
 Response: 3783936
 Conc: 16.52 ng/ml

Instrument :
 ECD_O
 ClientSampleId :
 AR1254CCC500



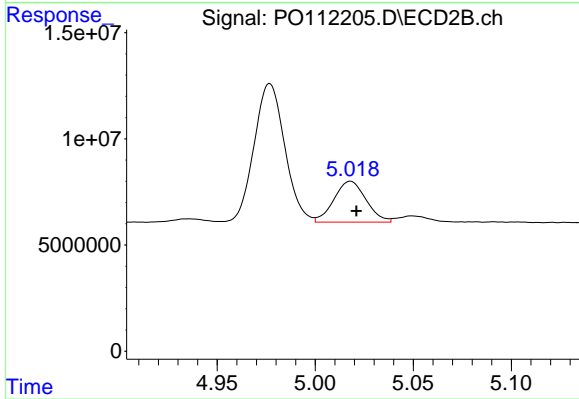
#13 AR-1232-3

R.T.: 4.935 min
 Delta R.T.: 0.000 min
 Response: 1781277
 Conc: 23.59 ng/ml



#14 AR-1232-4

R.T.: 4.954 min
 Delta R.T.: -0.002 min
 Response: 4647404
 Conc: 40.66 ng/ml



#14 AR-1232-4

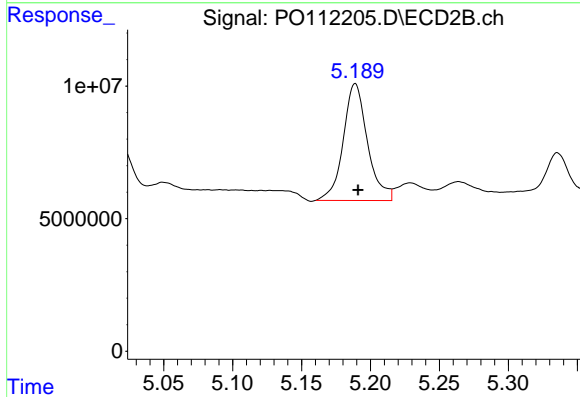
R.T.: 5.018 min
 Delta R.T.: -0.003 min
 Response: 21995463
 Conc: 333.32 ng/ml



#15 AR-1232-5

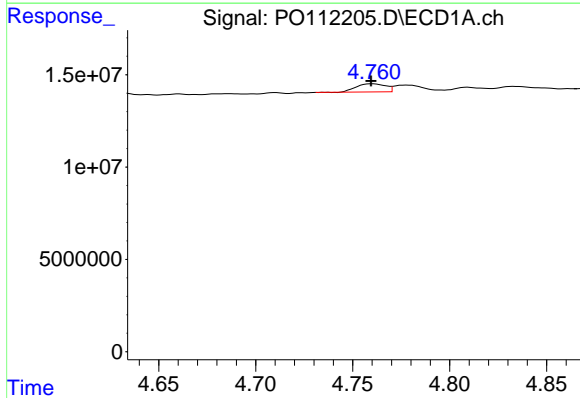
R.T.: 4.998 min
 Delta R.T.: -0.002 min
 Response: 105945237
 Conc: 1443.39 ng/ml

Instrument :
 ECD_O
 ClientSampleId :
 AR1254CCC500



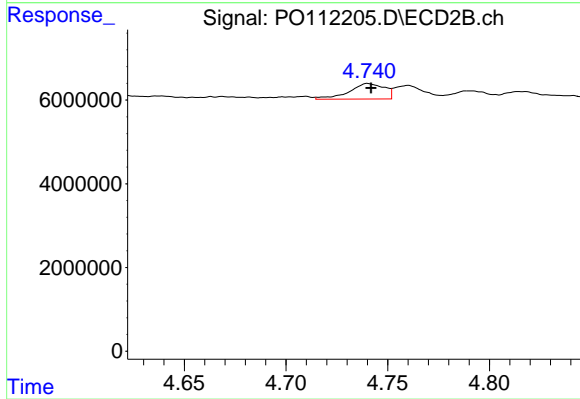
#15 AR-1232-5

R.T.: 5.189 min
 Delta R.T.: -0.002 min
 Response: 54019616
 Conc: 727.44 ng/ml



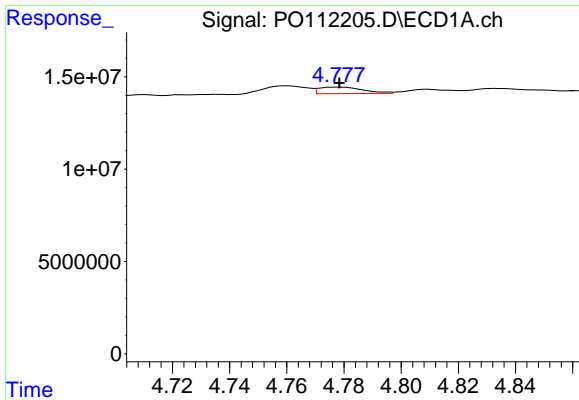
#16 AR-1242-1

R.T.: 4.760 min
 Delta R.T.: 0.000 min
 Response: 4594667
 Conc: 15.86 ng/ml



#16 AR-1242-1

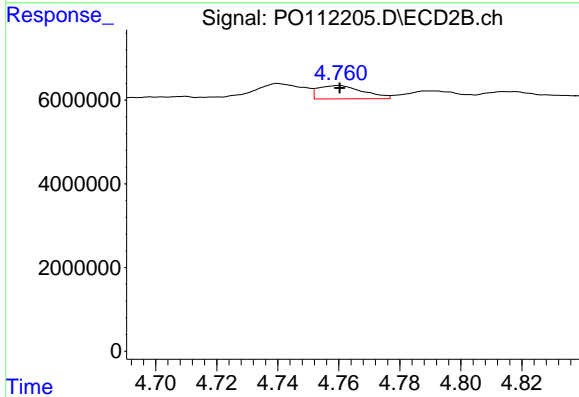
R.T.: 4.740 min
 Delta R.T.: -0.002 min
 Response: 4467892
 Conc: 23.05 ng/ml



#17 AR-1242-2

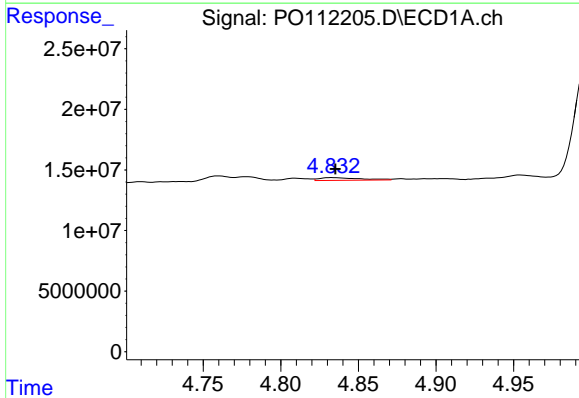
R.T.: 4.778 min
 Delta R.T.: 0.000 min
 Response: 3783936
 Conc: 8.88 ng/ml

Instrument :
 ECD_O
 ClientSampleId :
 AR1254CCC500



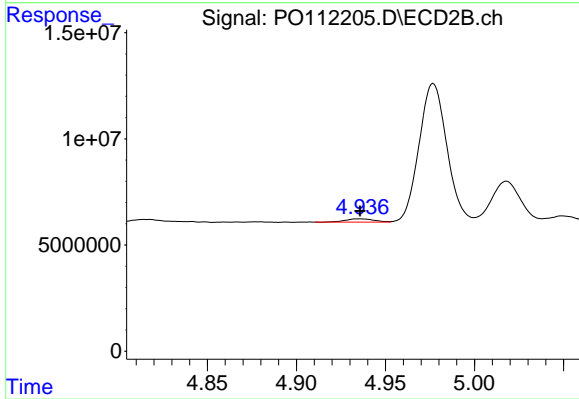
#17 AR-1242-2

R.T.: 4.760 min
 Delta R.T.: 0.000 min
 Response: 3244428
 Conc: 11.45 ng/ml



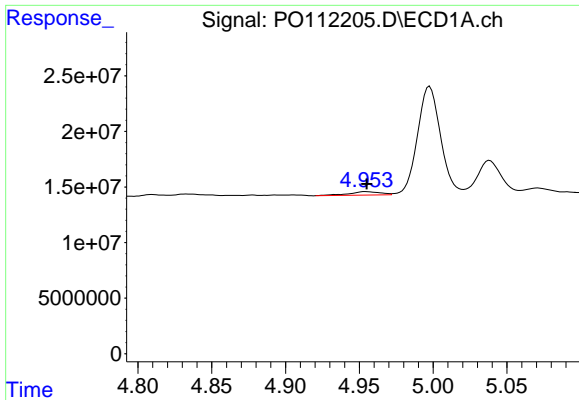
#18 AR-1242-3

R.T.: 4.833 min
 Delta R.T.: -0.002 min
 Response: 4058568
 Conc: 14.83 ng/ml



#18 AR-1242-3

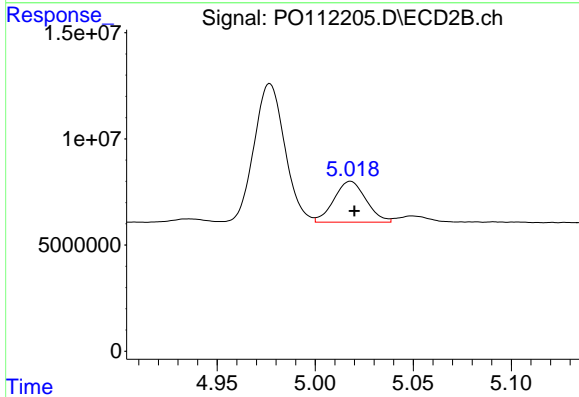
R.T.: 4.935 min
 Delta R.T.: 0.000 min
 Response: 1781277
 Conc: 12.23 ng/ml



#19 AR-1242-4

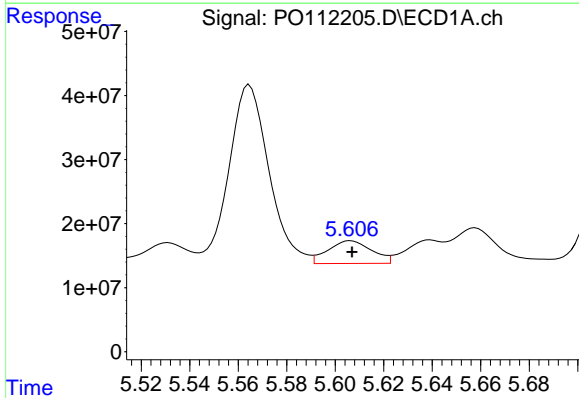
R.T.: 4.954 min
 Delta R.T.: 0.000 min
 Response: 4647404
 Conc: 20.63 ng/ml

Instrument :
 ECD_O
 ClientSampleId :
 AR1254CCC500



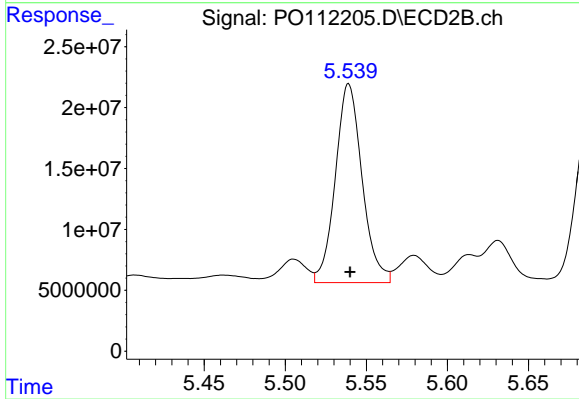
#19 AR-1242-4

R.T.: 5.018 min
 Delta R.T.: -0.002 min
 Response: 21995463
 Conc: 155.07 ng/ml



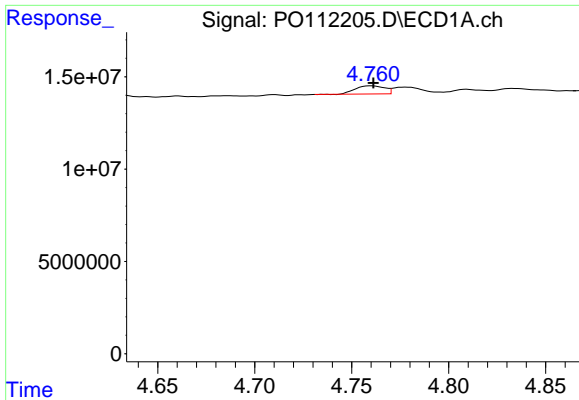
#20 AR-1242-5

R.T.: 5.606 min
 Delta R.T.: 0.000 min
 Response: 44374281
 Conc: 209.64 ng/ml



#20 AR-1242-5

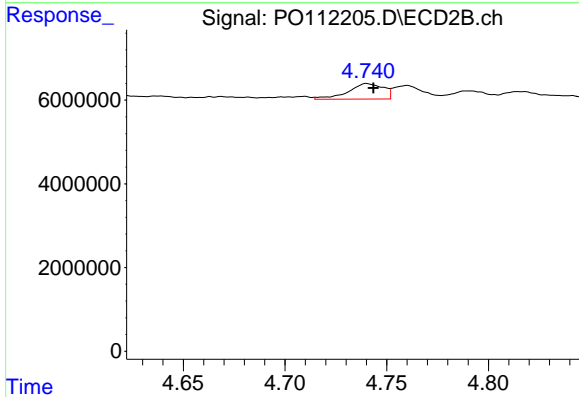
R.T.: 5.539 min
 Delta R.T.: 0.000 min
 Response: 187370640
 Conc: 1031.02 ng/ml



#21 AR-1248-1

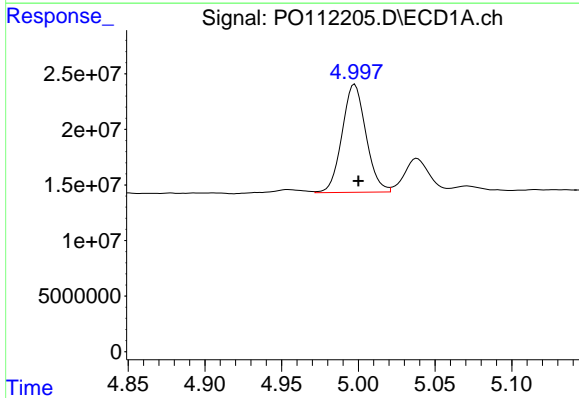
R.T.: 4.760 min
 Delta R.T.: -0.001 min
 Response: 4594667
 Conc: 20.25 ng/ml

Instrument :
 ECD_O
 ClientSampleId :
 AR1254CCC500



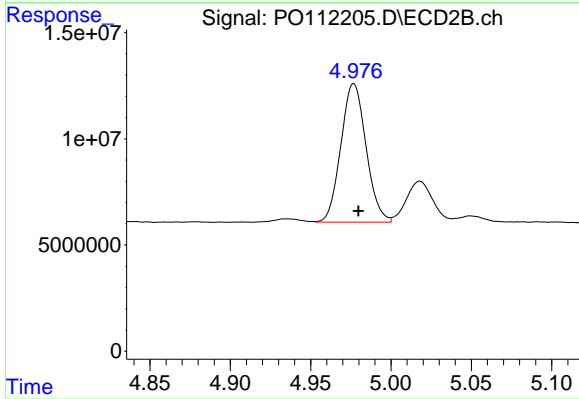
#21 AR-1248-1

R.T.: 4.740 min
 Delta R.T.: -0.003 min
 Response: 4467892
 Conc: 28.94 ng/ml



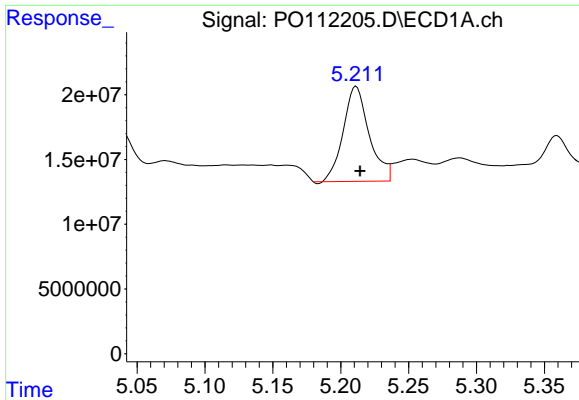
#22 AR-1248-2

R.T.: 4.998 min
 Delta R.T.: -0.003 min
 Response: 105945237
 Conc: 343.62 ng/ml



#22 AR-1248-2

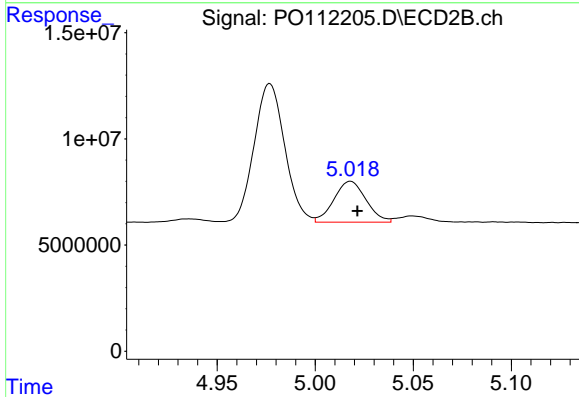
R.T.: 4.977 min
 Delta R.T.: -0.003 min
 Response: 71208648
 Conc: 346.06 ng/ml



#23 AR-1248-3

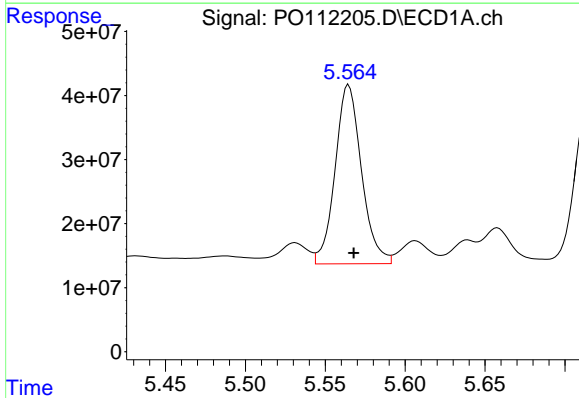
R.T.: 5.211 min
 Delta R.T.: -0.003 min
 Response: 97232834
 Conc: 238.71 ng/ml

Instrument :
 ECD_O
 ClientSampleId :
 AR1254CCC500



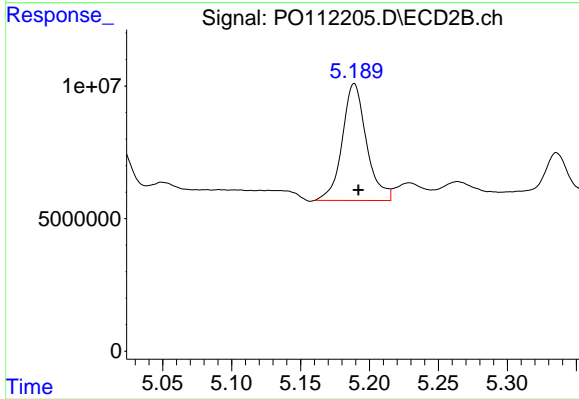
#23 AR-1248-3

R.T.: 5.018 min
 Delta R.T.: -0.003 min
 Response: 21995463
 Conc: 102.40 ng/ml



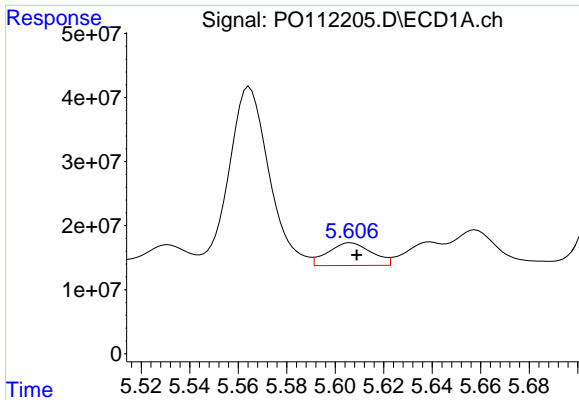
#24 AR-1248-4

R.T.: 5.565 min
 Delta R.T.: -0.003 min
 Response: 320847722
 Conc: 555.92 ng/ml



#24 AR-1248-4

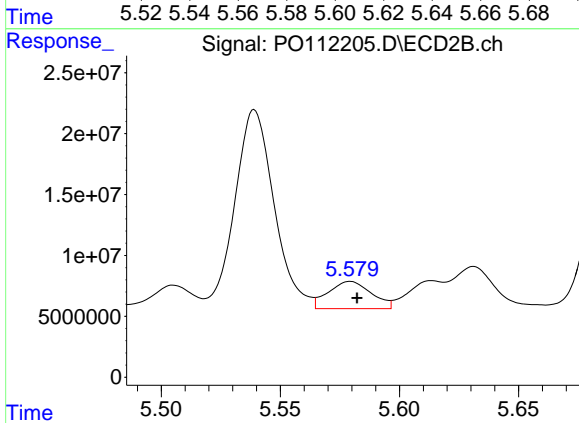
R.T.: 5.189 min
 Delta R.T.: -0.003 min
 Response: 54019616
 Conc: 208.79 ng/ml



#25 AR-1248-5

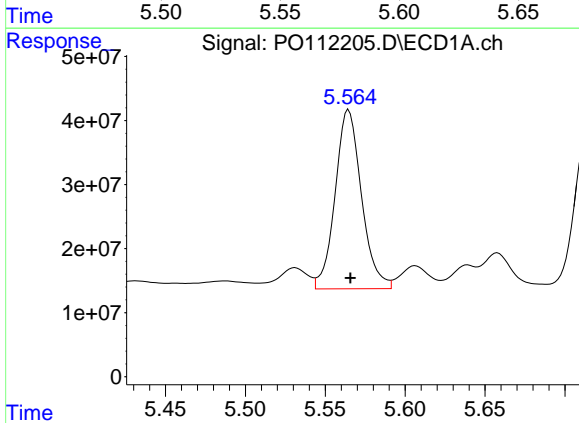
R.T.: 5.606 min
 Delta R.T.: -0.002 min
 Response: 44374281
 Conc: 113.69 ng/ml

Instrument :
 ECD_O
 ClientSampleId :
 AR1254CCC500



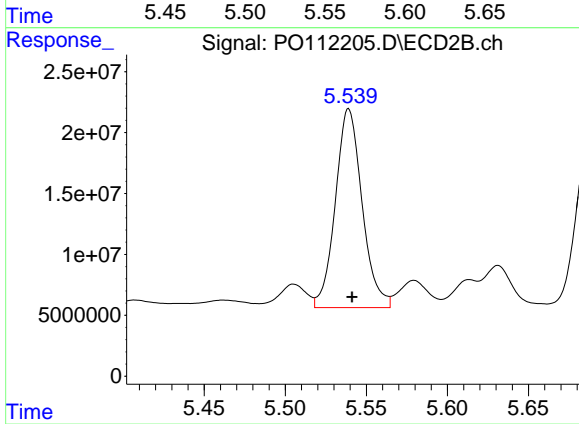
#25 AR-1248-5

R.T.: 5.579 min
 Delta R.T.: -0.003 min
 Response: 28214637
 Conc: 112.61 ng/ml



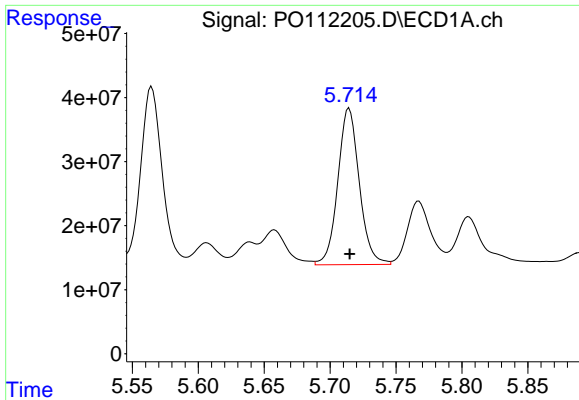
#26 AR-1254-1

R.T.: 5.565 min
 Delta R.T.: -0.001 min
 Response: 320847722
 Conc: 521.61 ng/ml



#26 AR-1254-1

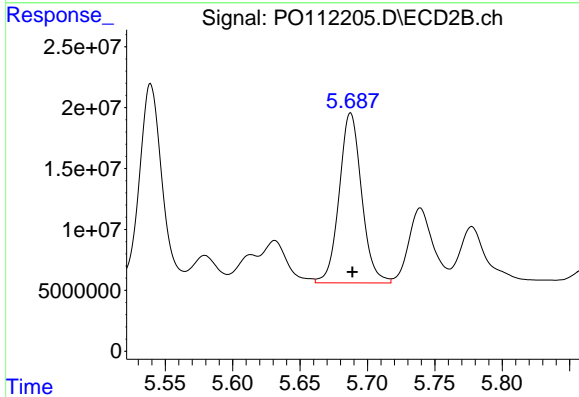
R.T.: 5.539 min
 Delta R.T.: -0.002 min
 Response: 187370640
 Conc: 491.57 ng/ml



#27 AR-1254-2

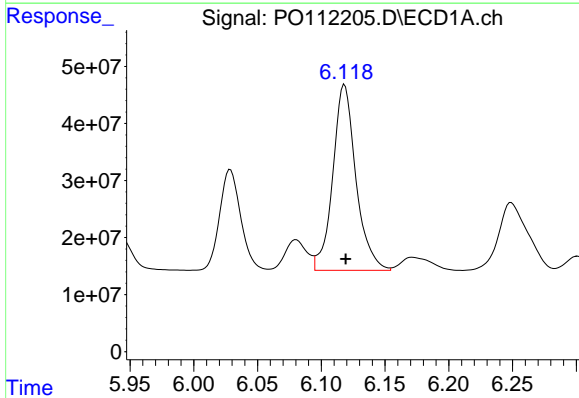
R.T.: 5.714 min
 Delta R.T.: 0.000 min
 Response: 277160984
 Conc: 517.39 ng/ml

Instrument :
 ECD_O
 ClientSampleId :
 AR1254CCC500



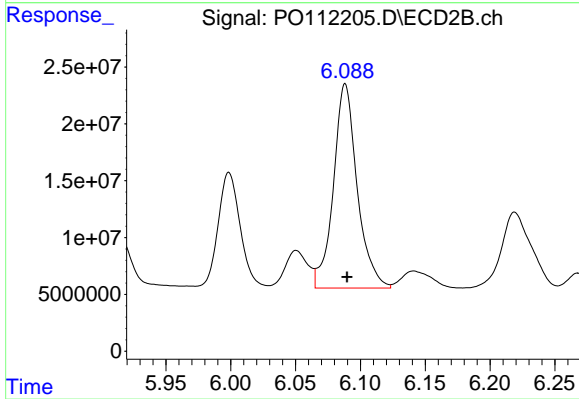
#27 AR-1254-2

R.T.: 5.688 min
 Delta R.T.: -0.001 min
 Response: 161799892
 Conc: 487.63 ng/ml



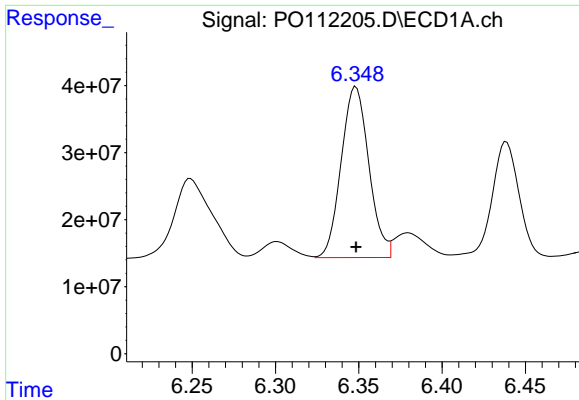
#28 AR-1254-3

R.T.: 6.118 min
 Delta R.T.: 0.000 min
 Response: 411688593
 Conc: 490.35 ng/ml



#28 AR-1254-3

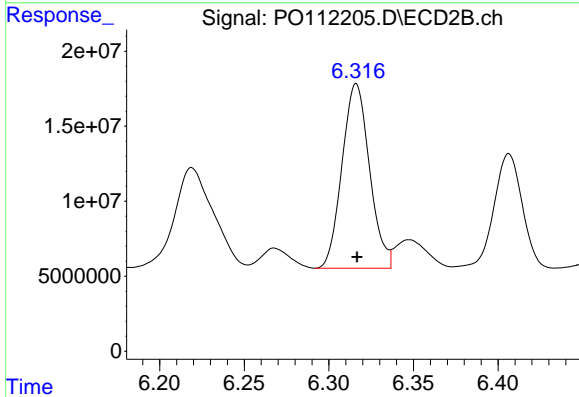
R.T.: 6.088 min
 Delta R.T.: -0.001 min
 Response: 229393227
 Conc: 475.88 ng/ml



#29 AR-1254-4

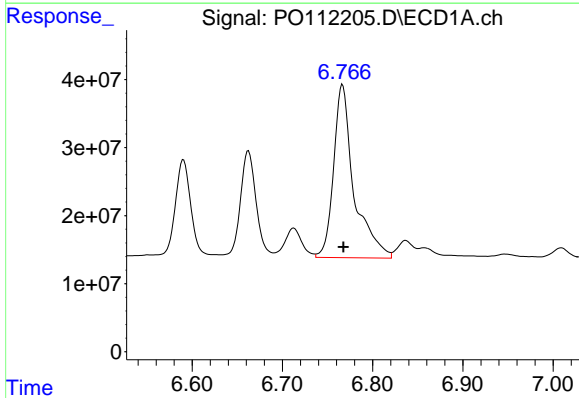
R.T.: 6.348 min
 Delta R.T.: 0.000 min
 Response: 294452500
 Conc: 612.14 ng/ml

Instrument :
 ECD_O
 ClientSampleId :
 AR1254CCC500



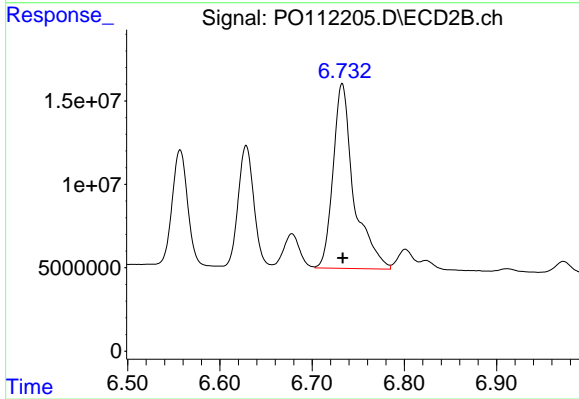
#29 AR-1254-4

R.T.: 6.316 min
 Delta R.T.: 0.000 min
 Response: 139172462
 Conc: 533.85 ng/ml



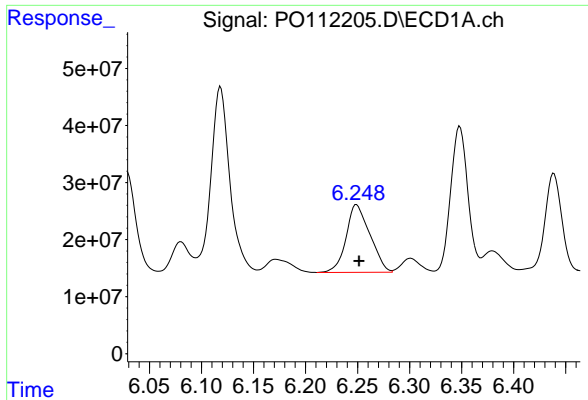
#30 AR-1254-5

R.T.: 6.767 min
 Delta R.T.: 0.000 min
 Response: 397993752
 Conc: 514.24 ng/ml



#30 AR-1254-5

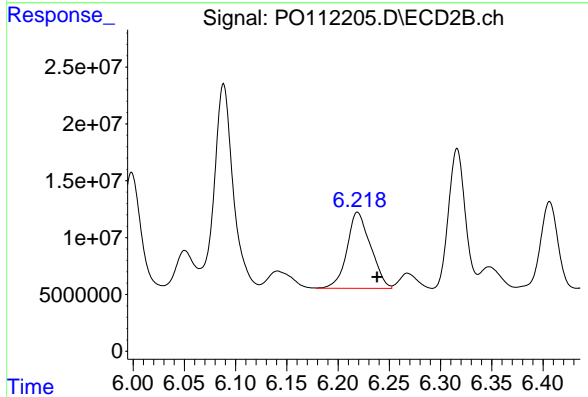
R.T.: 6.733 min
 Delta R.T.: 0.000 min
 Response: 172717958
 Conc: 484.68 ng/ml



#31 AR-1260-1

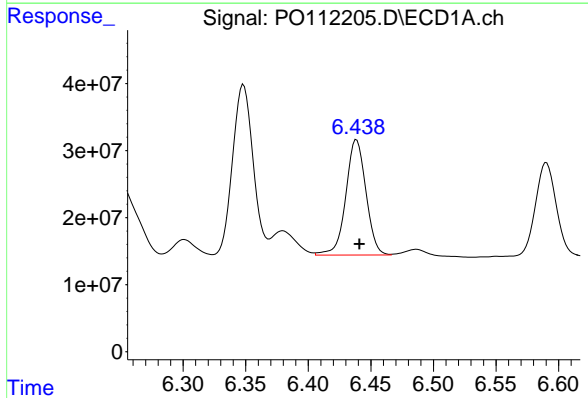
R.T.: 6.249 min
 Delta R.T.: -0.002 min
 Response: 188301256
 Conc: 375.67 ng/ml

Instrument :
 ECD_O
 ClientSampleId :
 AR1254CCC500



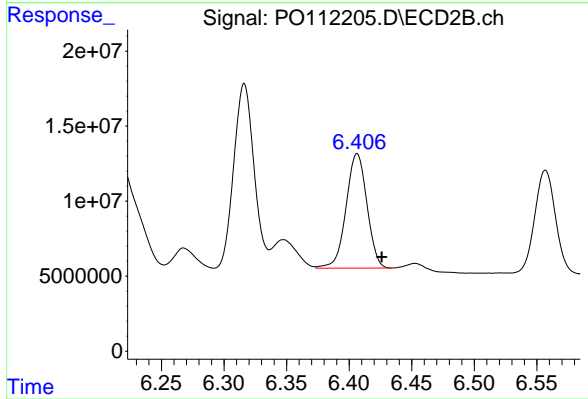
#31 AR-1260-1

R.T.: 6.219 min
 Delta R.T.: -0.019 min
 Response: 107321741
 Conc: 382.52 ng/ml



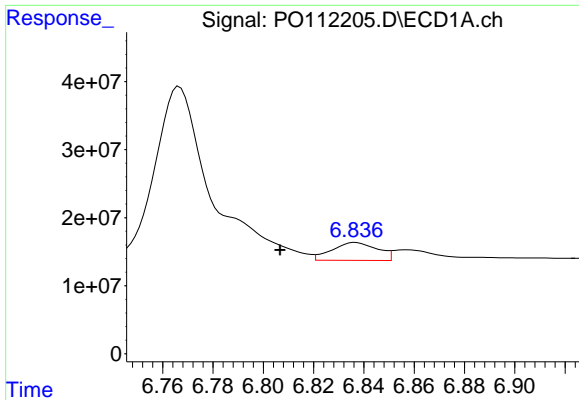
#32 AR-1260-2

R.T.: 6.439 min
 Delta R.T.: -0.002 min
 Response: 193284262
 Conc: 261.86 ng/ml



#32 AR-1260-2

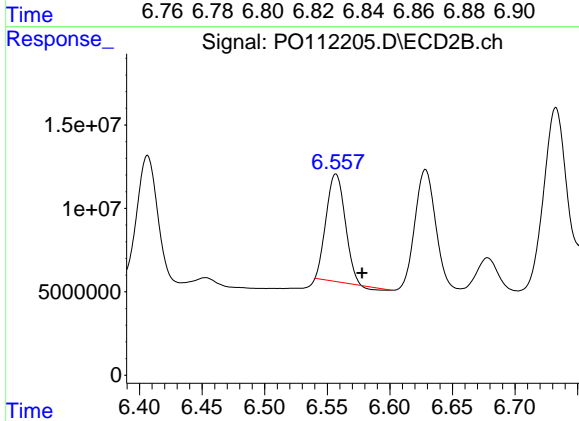
R.T.: 6.406 min
 Delta R.T.: -0.020 min
 Response: 88549125
 Conc: 260.44 ng/ml



#33 AR-1260-3

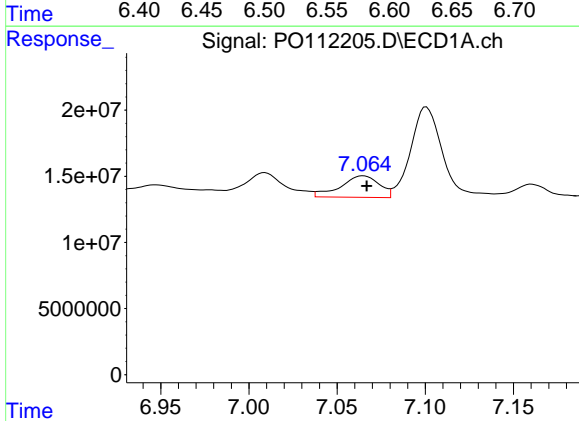
R.T.: 6.837 min
 Delta R.T.: 0.030 min
 Response: 33002298
 Conc: 50.35 ng/ml

Instrument :
 ECD_O
 ClientSampleId :
 AR1254CCC500



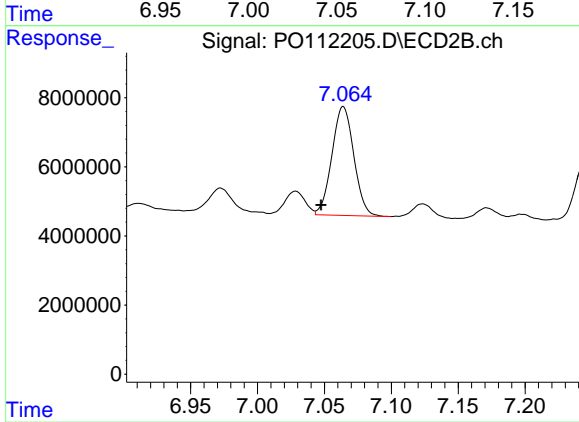
#33 AR-1260-3

R.T.: 6.557 min
 Delta R.T.: -0.021 min
 Response: 67318991
 Conc: 244.28 ng/ml



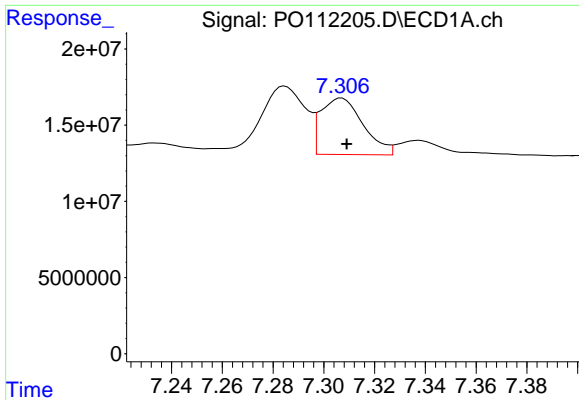
#34 AR-1260-4

R.T.: 7.065 min
 Delta R.T.: -0.002 min
 Response: 24761569
 Conc: 56.89 ng/ml



#34 AR-1260-4

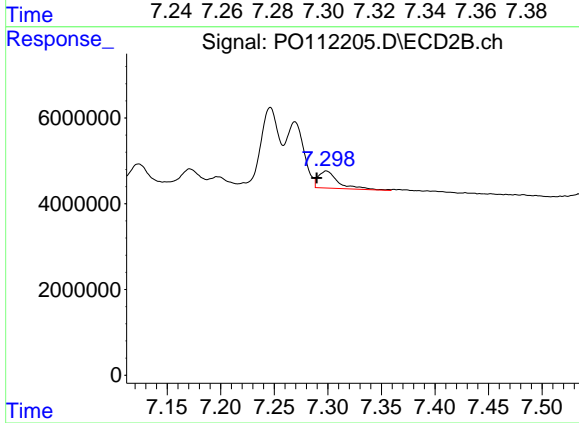
R.T.: 7.064 min
 Delta R.T.: 0.016 min
 Response: 35885162
 Conc: 178.85 ng/ml



#35 AR-1260-5

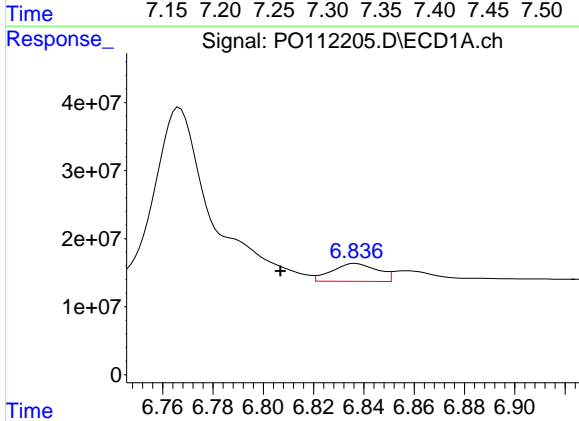
R.T.: 7.307 min
 Delta R.T.: -0.002 min
 Response: 42923111
 Conc: 34.00 ng/ml

Instrument :
 ECD_O
 ClientSampleId :
 AR1254CCC500



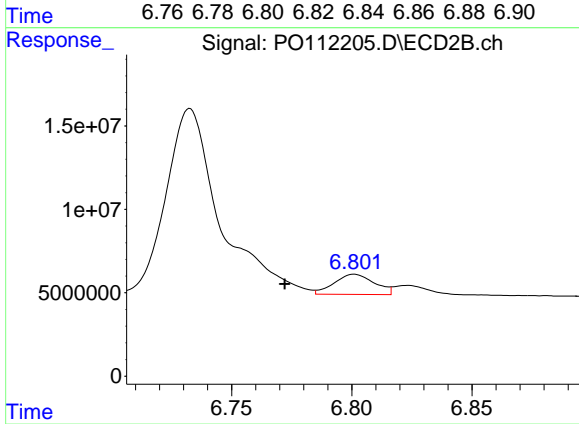
#35 AR-1260-5

R.T.: 7.299 min
 Delta R.T.: 0.009 min
 Response: 5200909
 Conc: 11.62 ng/ml



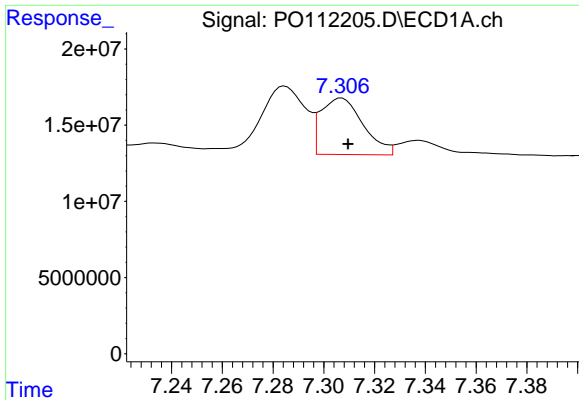
#36 AR-1262-1

R.T.: 6.837 min
 Delta R.T.: 0.030 min
 Response: 33002298
 Conc: 32.30 ng/ml



#36 AR-1262-1

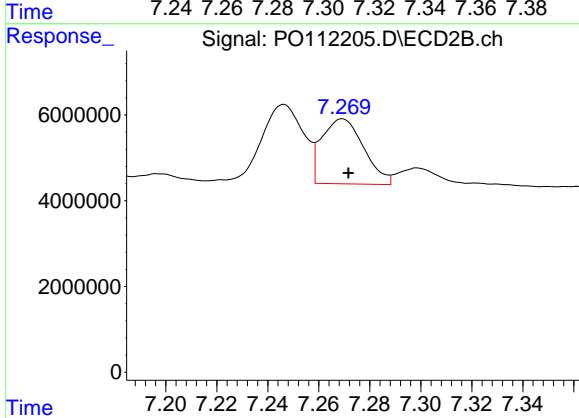
R.T.: 6.801 min
 Delta R.T.: 0.029 min
 Response: 14063084
 Conc: 34.53 ng/ml



#37 AR-1262-2

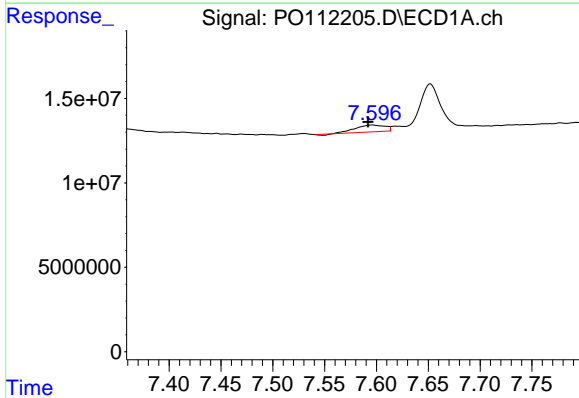
R.T.: 7.307 min
 Delta R.T.: -0.003 min
 Response: 42923111
 Conc: 26.18 ng/ml

Instrument :
 ECD_O
 ClientSampleId :
 AR1254CCC500



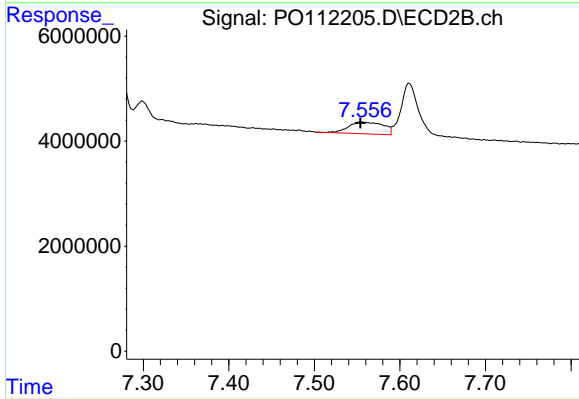
#37 AR-1262-2

R.T.: 7.269 min
 Delta R.T.: -0.002 min
 Response: 17265283
 Conc: 33.69 ng/ml



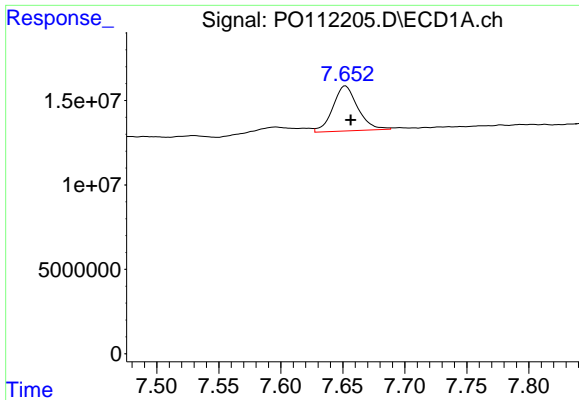
#38 AR-1262-3

R.T.: 7.597 min
 Delta R.T.: 0.004 min
 Response: 7756795
 Conc: 12.08 ng/ml



#38 AR-1262-3

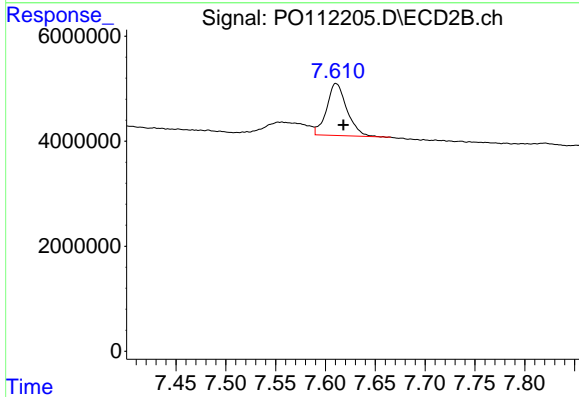
R.T.: 7.556 min
 Delta R.T.: 0.002 min
 Response: 6378561
 Conc: 35.53 ng/ml



#39 AR-1262-4

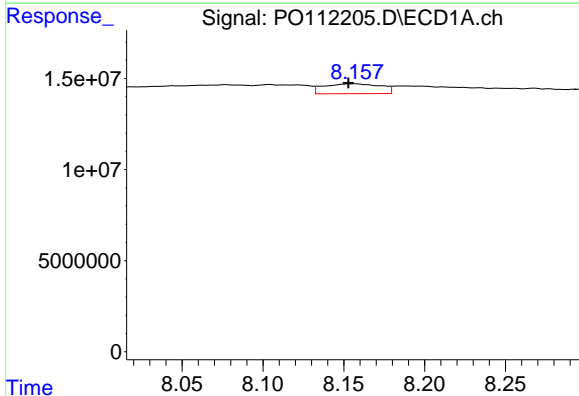
R.T.: 7.652 min
 Delta R.T.: -0.004 min
 Response: 37427867
 Conc: 34.93 ng/ml

Instrument :
 ECD_O
 ClientSampleId :
 AR1254CCC500



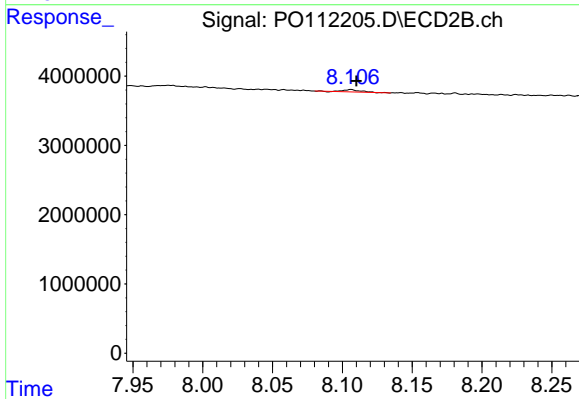
#39 AR-1262-4

R.T.: 7.611 min
 Delta R.T.: -0.007 min
 Response: 13944373
 Conc: 47.93 ng/ml



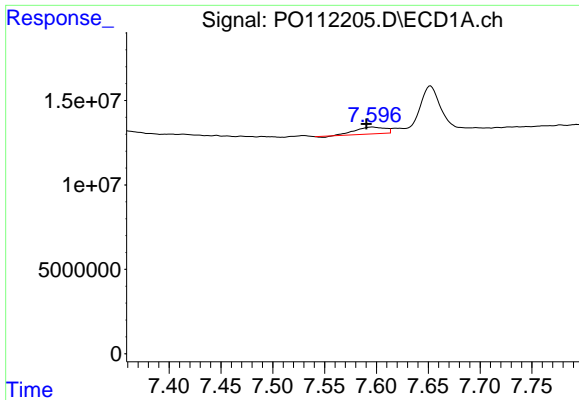
#40 AR-1262-5

R.T.: 8.157 min
 Delta R.T.: 0.004 min
 Response: 13254023
 Conc: 29.58 ng/ml



#40 AR-1262-5

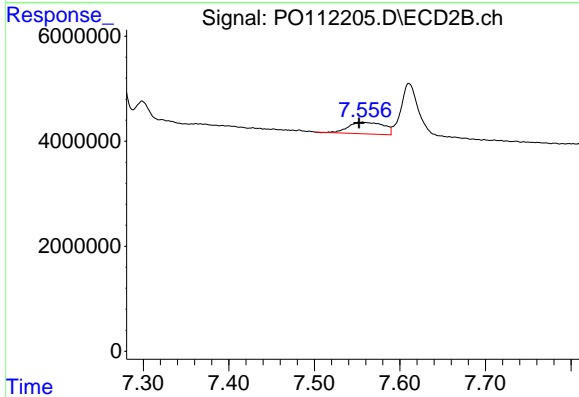
R.T.: 8.106 min
 Delta R.T.: -0.004 min
 Response: 296198
 Conc: 2.80 ng/ml



#41 AR-1268-1

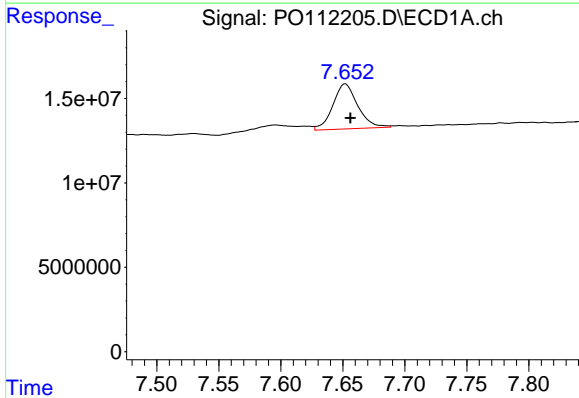
R.T.: 7.597 min
 Delta R.T.: 0.006 min
 Response: 7756795
 Conc: 4.22 ng/ml

Instrument :
 ECD_O
 ClientSampleId :
 AR1254CCC500



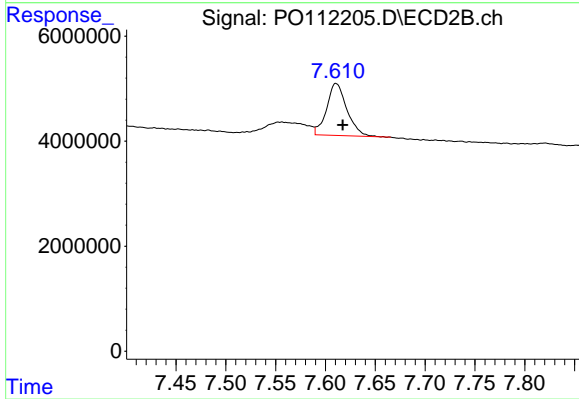
#41 AR-1268-1

R.T.: 7.556 min
 Delta R.T.: 0.004 min
 Response: 6378561
 Conc: 12.98 ng/ml



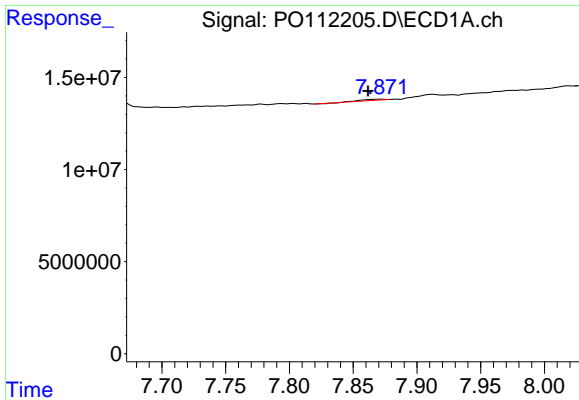
#42 AR-1268-2

R.T.: 7.652 min
 Delta R.T.: -0.004 min
 Response: 37427867
 Conc: 24.03 ng/ml



#42 AR-1268-2

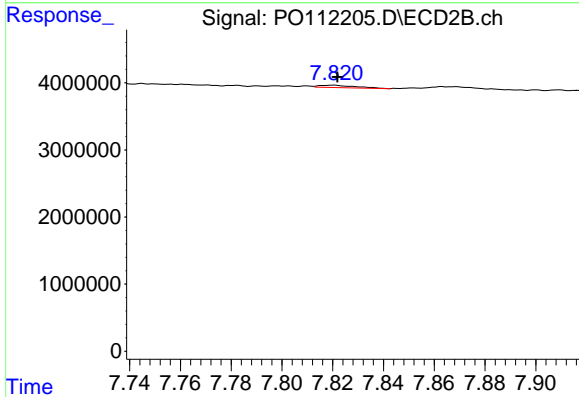
R.T.: 7.611 min
 Delta R.T.: -0.007 min
 Response: 13944373
 Conc: 33.42 ng/ml



#43 AR-1268-3

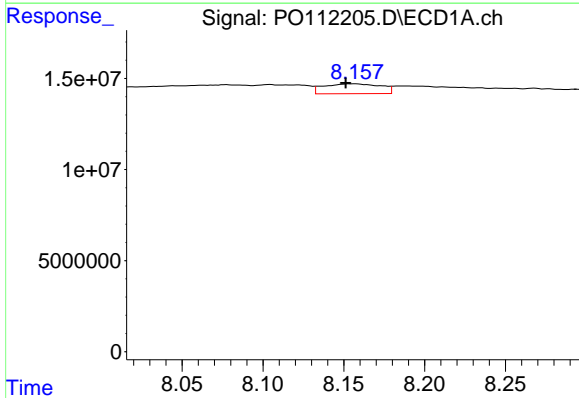
R.T.: 7.871 min
 Delta R.T.: 0.010 min
 Response: 719575
 Conc: 0.55 ng/ml

Instrument :
 ECD_O
 ClientSampleId :
 AR1254CCC500



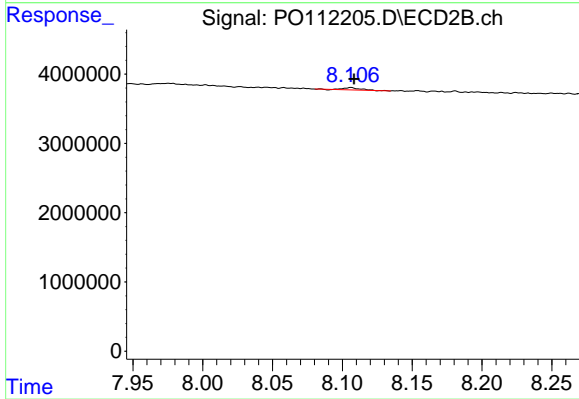
#43 AR-1268-3

R.T.: 7.820 min
 Delta R.T.: -0.002 min
 Response: 337481
 Conc: 1.07 ng/ml



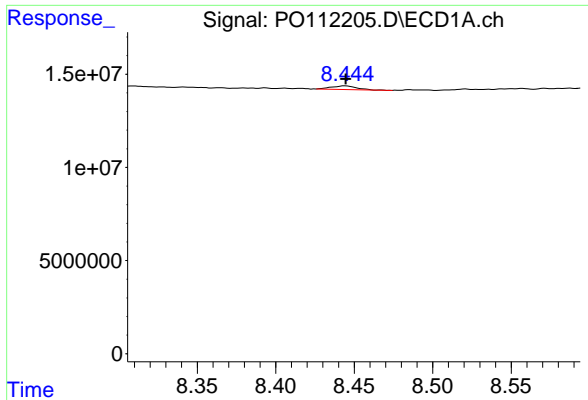
#44 AR-1268-4

R.T.: 8.157 min
 Delta R.T.: 0.006 min
 Response: 13254023
 Conc: 27.59 ng/ml



#44 AR-1268-4

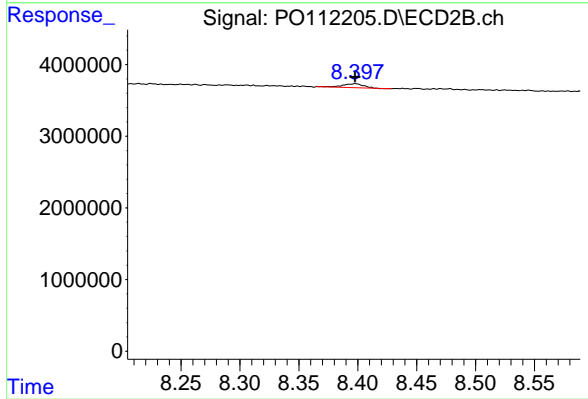
R.T.: 8.106 min
 Delta R.T.: -0.002 min
 Response: 296198
 Conc: 2.66 ng/ml



#45 AR-1268-5

R.T.: 8.444 min
 Delta R.T.: 0.000 min
 Response: 2147374
 Conc: 0.66 ng/ml

Instrument :
 ECD_O
 ClientSampleId :
 AR1254CCC500



#45 AR-1268-5

R.T.: 8.398 min
 Delta R.T.: 0.000 min
 Response: 674693
 Conc: 0.93 ng/ml