

Data Path : Z:\pestpcbsrv\HPCHEM1\ECD_0\Data\P0071025\
 Data File : PO112206.D
 Signal(s) : Signal #1: ECD1A.ch Signal #2: ECD2B.ch
 Acq On : 10 Jul 2025 22:20
 Operator : YP/AJ
 Sample : I.BLK
 Misc :
 ALS Vial : 2 Sample Multiplier: 1

Instrument :
 ECD_0
 ClientSampleId :
 I.BLK

Integration File signal 1: autoint1.e
 Integration File signal 2: autoint2.e
 Quant Time: Jul 10 22:59:17 2025
 Quant Method : Z:\pestpcbsrv\HPCHEM1\ECD_0\methods\P0070825.M
 Quant Title : GC EXTRACTABLES
 QLast Update : Wed Jul 09 10:50:50 2025
 Response via : Initial Calibration
 Integrator: ChemStation

Volume Inj. : 2 µl
 Signal #1 Phase : ZB-MR1 Signal #2 Phase: ZB-MR2
 Signal #1 Info : 30Mx0.32mmx 0.50µ Signal #2 Info : 30M x 0.32mm x 0.25µm

Compound	RT#1	RT#2	Resp#1	Resp#2	ng/ml	ng/ml

System Monitoring Compounds						
1) SA Tetrachlo...	3.672	3.665	182.5E6	113.9E6	18.448	17.885
2) SA Decachlor...	8.700	8.648	118.8E6	32785968	17.377	19.023
Target Compounds						
3) L1 AR-1016-1	4.761	4.754	199061	874324	0.585	3.924 #
4) L1 AR-1016-2	4.776	4.771	222814	135546	0.448	0.412
5) L1 AR-1016-3	4.844	4.946	771632	1225158	2.384	7.212 #
6) L1 AR-1016-4	4.954	4.998	3602003	342505	14.027	2.496 #
7) L1 AR-1016-5	5.212	5.192	16090471	9180399	58.797	53.235
8) L2 AR-1221-1	3.843f	3.875	858816	182106	7.365	2.213 #
9) L2 AR-1221-2	3.974	3.965	2375785	2312658	30.134	38.964 #
10) L2 AR-1221-3	4.028	4.038	361298	170639	1.340	0.904 #
11) L3 AR-1232-1	4.028	4.038	361298	170639	1.683	1.137 #
12) L3 AR-1232-2	4.556	4.754	673467	874324	5.926	5.711
13) L3 AR-1232-3	4.776	4.936	222814	281824	0.973	3.732 #
14) L3 AR-1232-4	4.954	5.026	3602003	519787	31.514	7.877 #
15) L3 AR-1232-5	5.022	5.192	6899538	9180399	93.999	123.625 #
16) L4 AR-1242-1	4.761	4.740	199061	645386	0.687	3.329 #
17) L4 AR-1242-2	4.776	4.754	222814	874324	0.523	3.086 #
18) L4 AR-1242-3	4.844	4.936	771632	281824	2.819	1.935 #
19) L4 AR-1242-4	4.954	5.026	3602003	519787	15.986	3.665 #
20) L4 AR-1242-5	5.610	5.525	11174592	4220222	52.792	23.222 #
21) L5 AR-1248-1	4.761	4.740	199061	645386	0.877	4.181 #
22) L5 AR-1248-2	5.022	4.989	6899538	1100319	22.377	5.347 #
23) L5 AR-1248-3	5.212	5.026	16090471	519787	39.503	2.420 #
24) L5 AR-1248-4	5.572	5.192	8740544	9180399	15.144	35.483 #
25) L5 AR-1248-5	5.610	5.602	11174592	1524087	28.630	6.083 #
26) L6 AR-1254-1	5.572	5.525	8740544	4220222	14.210	11.072
27) L6 AR-1254-2	5.725	5.688	11951277	8769289	22.310	26.429
28) L6 AR-1254-3	6.120	6.090	1283762	8443599	1.529	17.516 #
29) L6 AR-1254-4	6.335	6.281f	1701645	3892025	3.538	14.929 #
30) L6 AR-1254-5	6.778	6.761	5198006	395137	6.716	1.109 #
31) L7 AR-1260-1	6.258	6.245	539055	814432	1.075	2.903 #
32) L7 AR-1260-2	6.464	6.431	92390	224475	0.125	0.660 #
33) L7 AR-1260-3	6.798	6.585	8949664	-105760	13.654	N.D. #
34) L7 AR-1260-4	7.071	7.047	9971635	140601	22.910	0.701 #
35) L7 AR-1260-5	7.314	7.296	1196228	578860	0.947	1.293 #
36) L8 AR-1262-1	6.798	6.761	8949664	395137	8.760	0.970 #
37) L8 AR-1262-2	7.314	7.272	1196228	530009	0.730	1.034 #
38) L8 AR-1262-3	7.609	7.566	11499815	11465194	17.913	63.864 #
39) L8 AR-1262-4	7.655	7.566f	1049462	11465194	0.979	39.410 #
40) L8 AR-1262-5	8.148	8.126	3938993	19485	8.790	0.184 #
41) L9 AR-1268-1	7.609	7.566	11499815	11465194	6.259	23.329 #

Data Path : Z:\pestpcbsrv\HPCHEM1\ECD_0\Data\P0071025\
 Data File : P0112206.D
 Signal(s) : Signal #1: ECD1A.ch Signal #2: ECD2B.ch
 Acq On : 10 Jul 2025 22:20
 Operator : YP/AJ
 Sample : I.BLK
 Misc :
 ALS Vial : 2 Sample Multiplier: 1

Instrument :
 ECD_0
 ClientSampleId :
 I.BLK

Integration File signal 1: autoint1.e
 Integration File signal 2: autoint2.e
 Quant Time: Jul 10 22:59:17 2025
 Quant Method : Z:\pestpcbsrv\HPCHEM1\ECD_0\methods\P0070825.M
 Quant Title : GC EXTRACTABLES
 QLast Update : Wed Jul 09 10:50:50 2025
 Response via : Initial Calibration
 Integrator: ChemStation

Volume Inj. : 2 µl
 Signal #1 Phase : ZB-MR1 Signal #2 Phase: ZB-MR2
 Signal #1 Info : 30Mx0.32mmx 0.50µ Signal #2 Info : 30M x 0.32mm x 0.25µm

	Compound	RT#1	RT#2	Resp#1	Resp#2	ng/ml	ng/ml
42)	L9 AR-1268-2	7.655	7.566f	1049462	11465194	0.674	27.482 #
43)	L9 AR-1268-3	7.863	7.838	404091	51074	0.311	0.161 #
44)	L9 AR-1268-4	8.148	8.126	3938993	19485	8.199	0.175 #
45)	L9 AR-1268-5	8.443	8.394	436116	210205	0.134	0.289 #

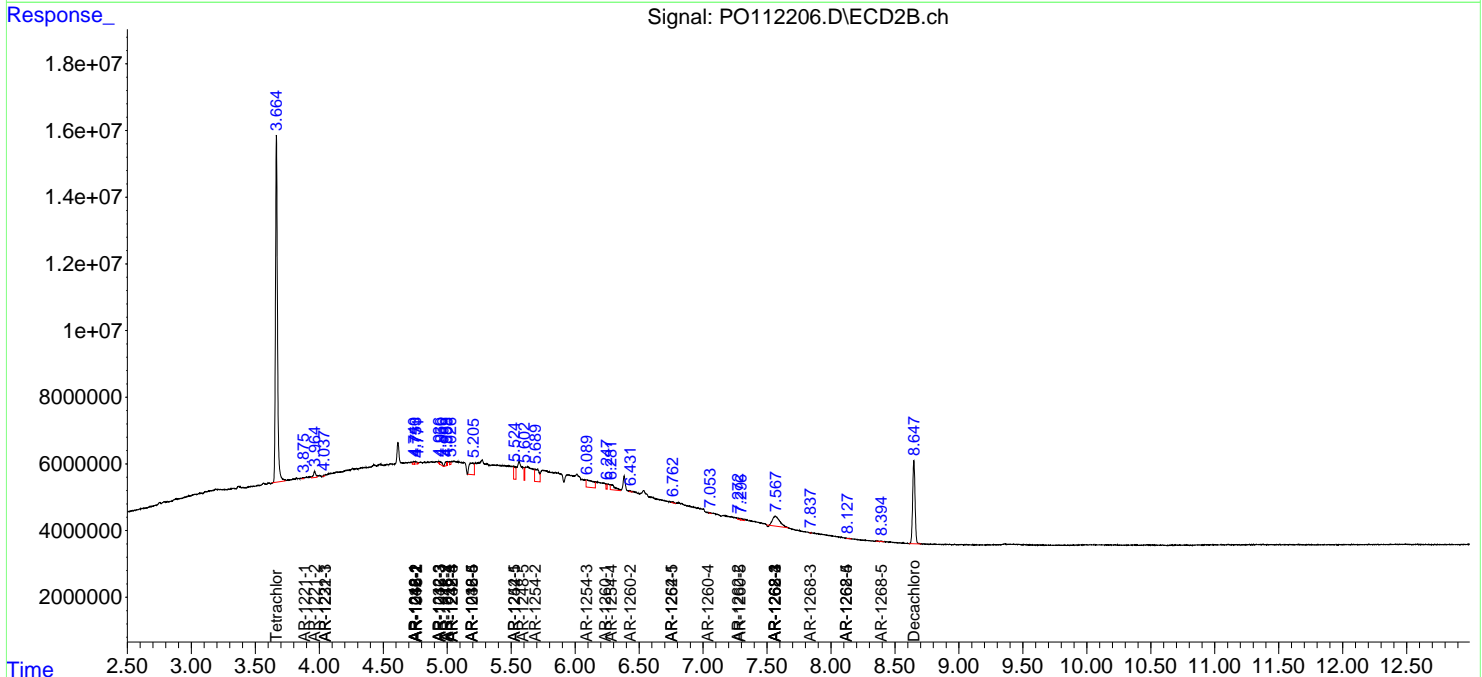
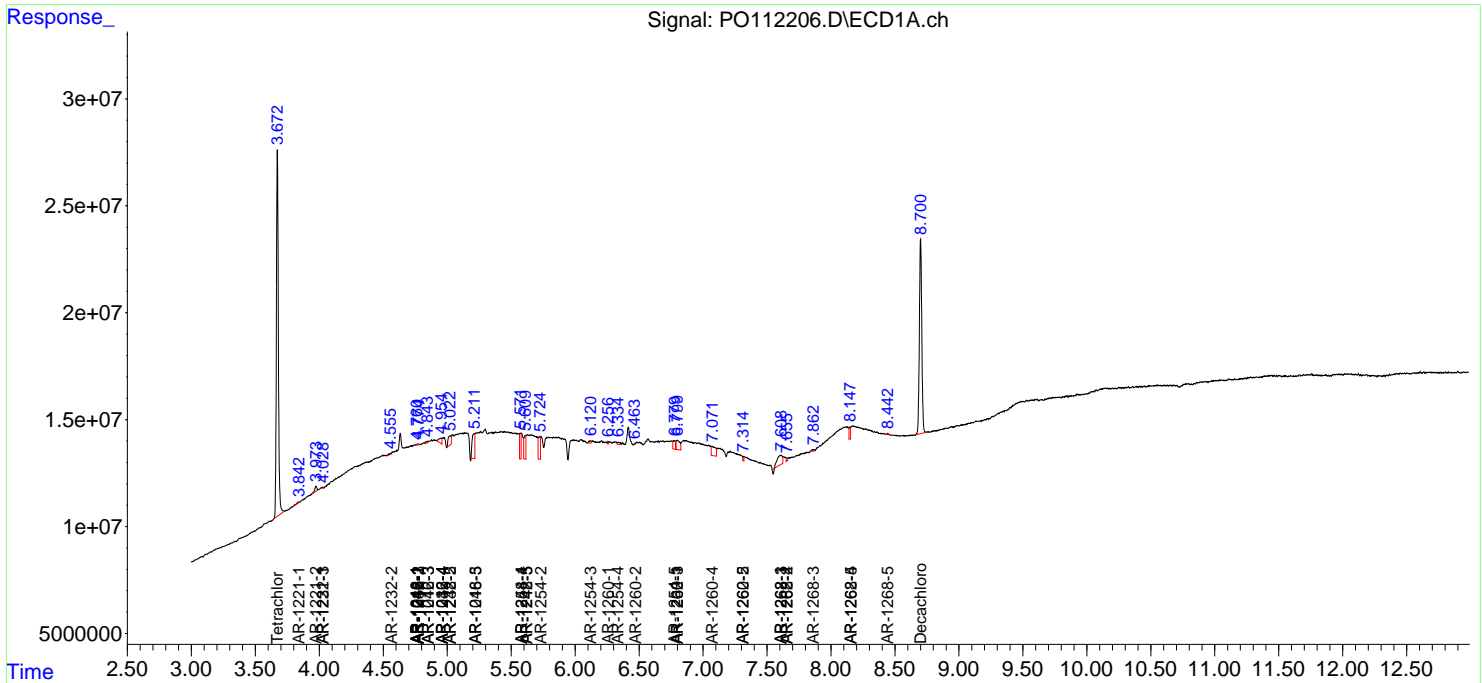
(f)=RT Delta > 1/2 Window (#)=Amounts differ by > 25% (m)=manual int.

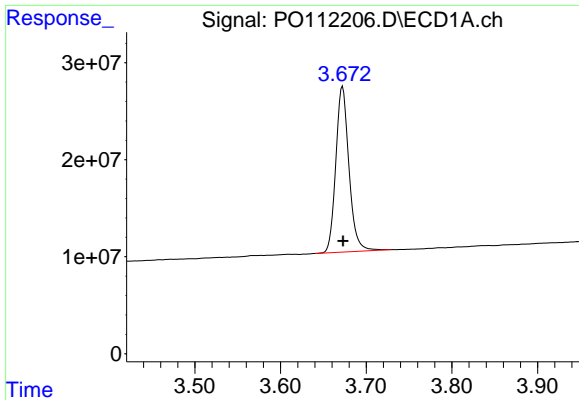
Data Path : Z:\pestpcbsrv\HPCHEM1\ECD_O\Data\PO071025\
 Data File : PO112206.D
 Signal(s) : Signal #1: ECD1A.ch Signal #2: ECD2B.ch
 Acq On : 10 Jul 2025 22:20
 Operator : YP/AJ
 Sample : I.BLK
 Misc :
 ALS Vial : 2 Sample Multiplier: 1

Instrument :
 ECD_O
 ClientSampleId :
 I.BLK

Integration File signal 1: autoint1.e
 Integration File signal 2: autoint2.e
 Quant Time: Jul 10 22:59:17 2025
 Quant Method : Z:\pestpcbsrv\HPCHEM1\ECD_O\methods\PO070825.M
 Quant Title : GC EXTRACTABLES
 QLast Update : Wed Jul 09 10:50:50 2025
 Response via : Initial Calibration
 Integrator: ChemStation

Volume Inj. : 2 µl
 Signal #1 Phase : ZB-MR1 Signal #2 Phase: ZB-MR2
 Signal #1 Info : 30Mx0.32mmx 0.50µ Signal #2 Info : 30M x 0.32mm x 0.25µm

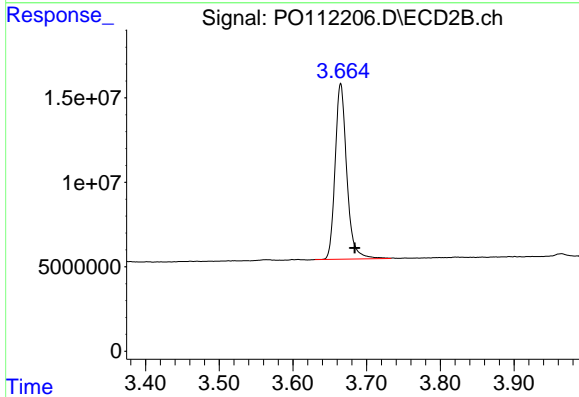




#1 Tetrachloro-m-xylene

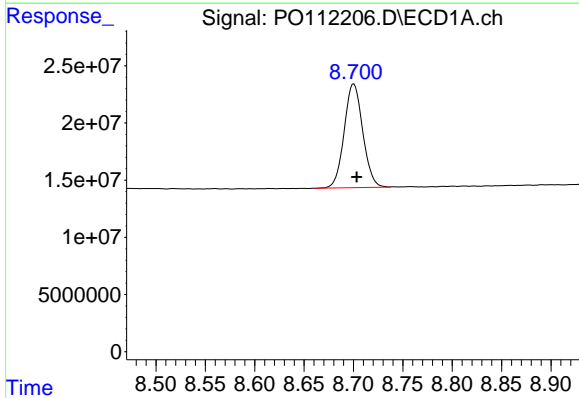
R.T.: 3.672 min
 Delta R.T.: 0.000 min
 Response: 182535676
 Conc: 18.45 ng/ml

Instrument :
 ECD_O
 ClientSampleId :
 I.BLK



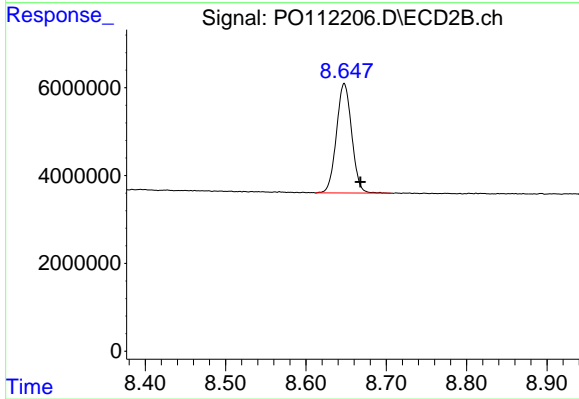
#1 Tetrachloro-m-xylene

R.T.: 3.665 min
 Delta R.T.: -0.019 min
 Response: 113946127
 Conc: 17.88 ng/ml



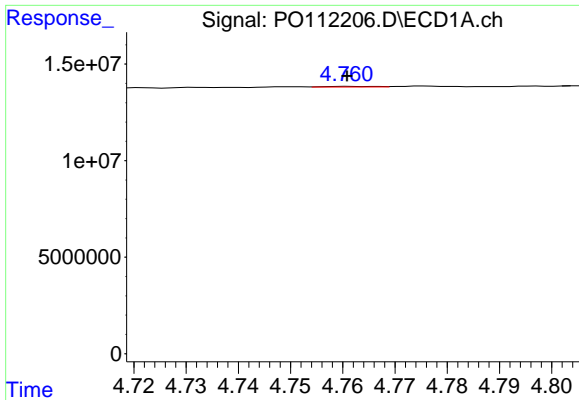
#2 Decachlorobiphenyl

R.T.: 8.700 min
 Delta R.T.: -0.003 min
 Response: 118804568
 Conc: 17.38 ng/ml



#2 Decachlorobiphenyl

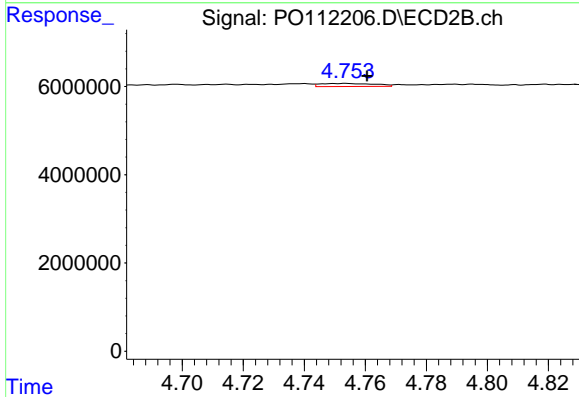
R.T.: 8.648 min
 Delta R.T.: -0.020 min
 Response: 32785968
 Conc: 19.02 ng/ml



#3 AR-1016-1

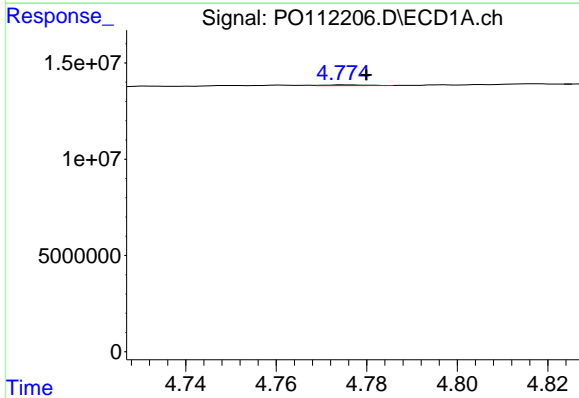
R.T.: 4.761 min
 Delta R.T.: 0.000 min
 Response: 199061
 Conc: 0.59 ng/ml

Instrument :
 ECD_O
 ClientSampleId :
 I.BLK



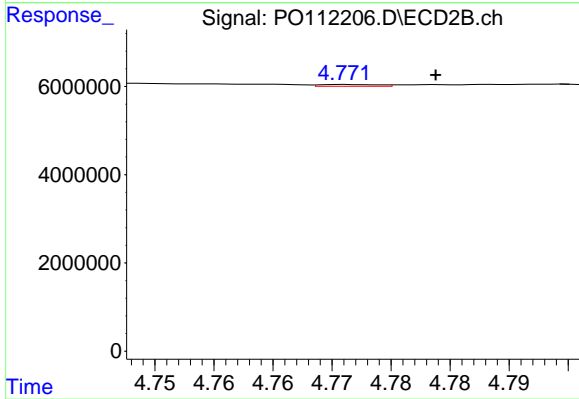
#3 AR-1016-1

R.T.: 4.754 min
 Delta R.T.: -0.007 min
 Response: 874324
 Conc: 3.92 ng/ml



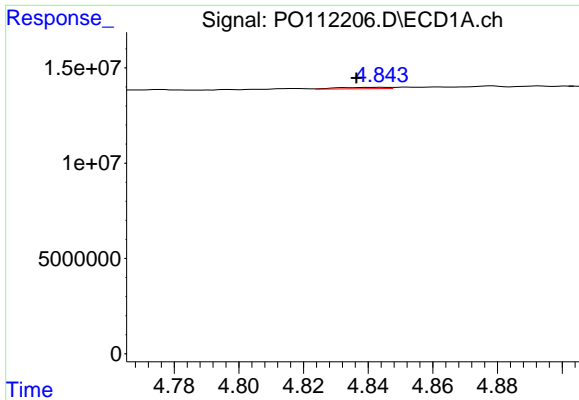
#4 AR-1016-2

R.T.: 4.776 min
 Delta R.T.: -0.004 min
 Response: 222814
 Conc: 0.45 ng/ml



#4 AR-1016-2

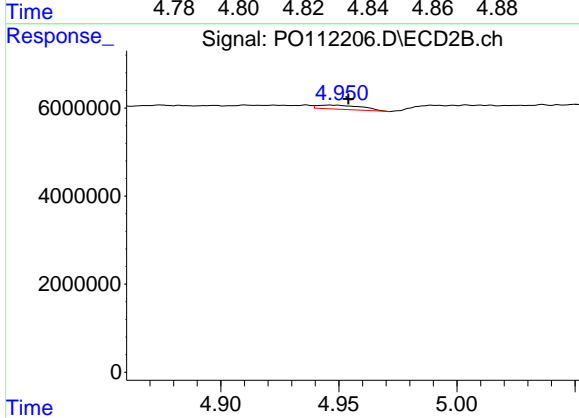
R.T.: 4.771 min
 Delta R.T.: -0.008 min
 Response: 135546
 Conc: 0.41 ng/ml



#5 AR-1016-3

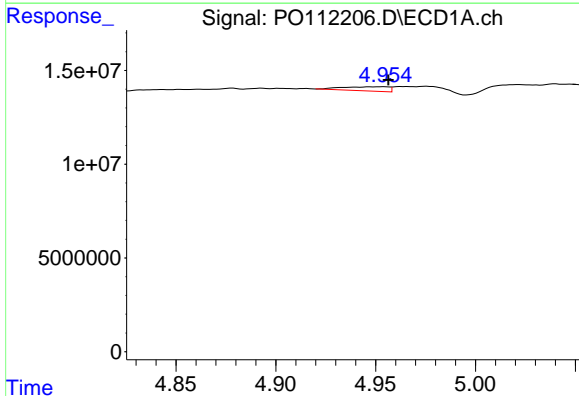
R.T.: 4.844 min
 Delta R.T.: 0.008 min
 Response: 771632
 Conc: 2.38 ng/ml

Instrument :
 ECD_O
 ClientSampleId :
 I.BLK



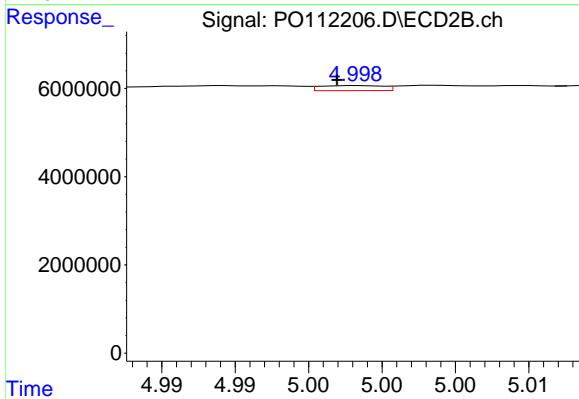
#5 AR-1016-3

R.T.: 4.946 min
 Delta R.T.: -0.008 min
 Response: 1225158
 Conc: 7.21 ng/ml



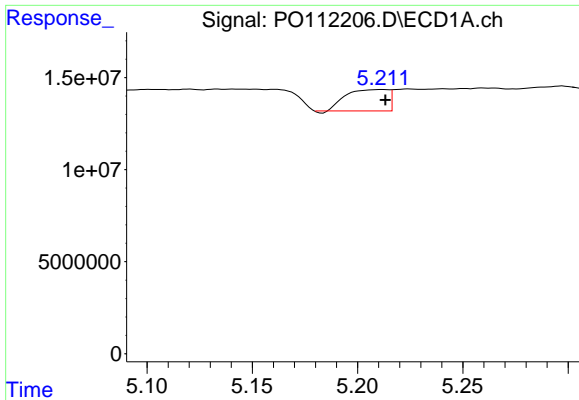
#6 AR-1016-4

R.T.: 4.954 min
 Delta R.T.: -0.002 min
 Response: 3602003
 Conc: 14.03 ng/ml



#6 AR-1016-4

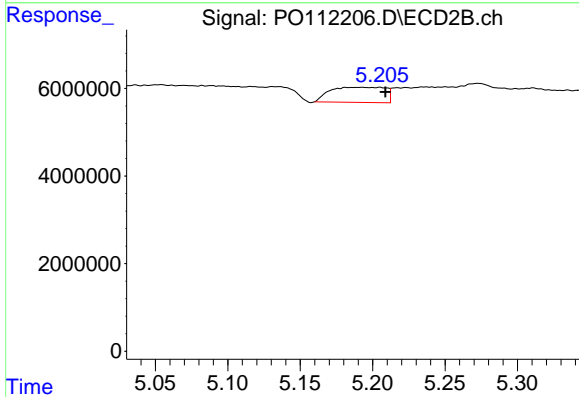
R.T.: 4.998 min
 Delta R.T.: 0.002 min
 Response: 342505
 Conc: 2.50 ng/ml



#7 AR-1016-5

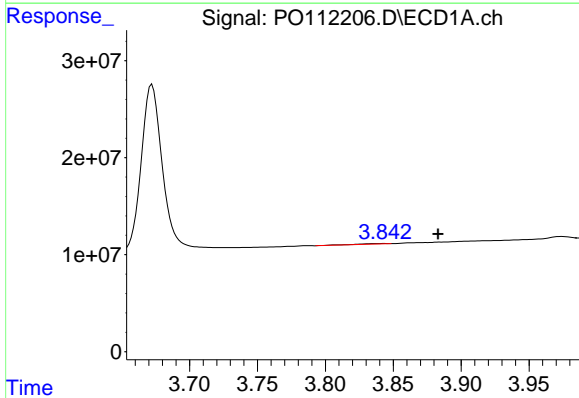
R.T.: 5.212 min
 Delta R.T.: -0.001 min
 Response: 16090471
 Conc: 58.80 ng/ml

Instrument :
 ECD_O
 ClientSampleId :
 I.BLK



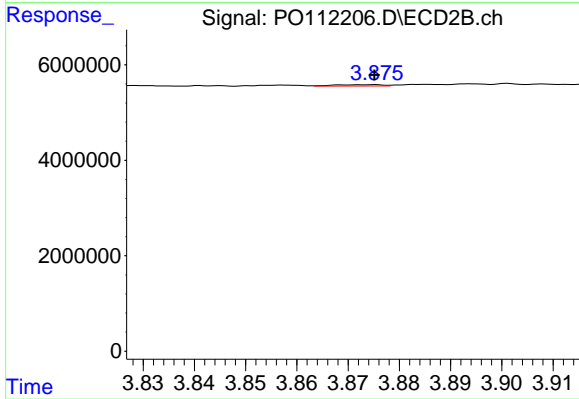
#7 AR-1016-5

R.T.: 5.192 min
 Delta R.T.: -0.017 min
 Response: 9180399
 Conc: 53.24 ng/ml



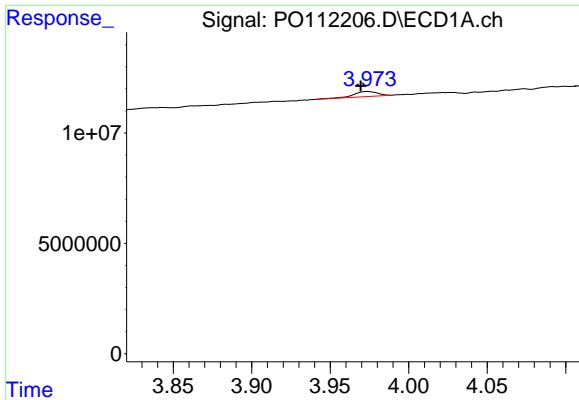
#8 AR-1221-1

R.T.: 3.843 min
 Delta R.T.: -0.040 min
 Response: 858816
 Conc: 7.36 ng/ml



#8 AR-1221-1

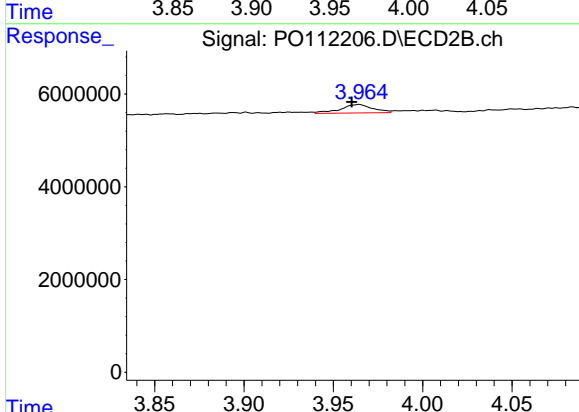
R.T.: 3.875 min
 Delta R.T.: 0.000 min
 Response: 182106
 Conc: 2.21 ng/ml



#9 AR-1221-2

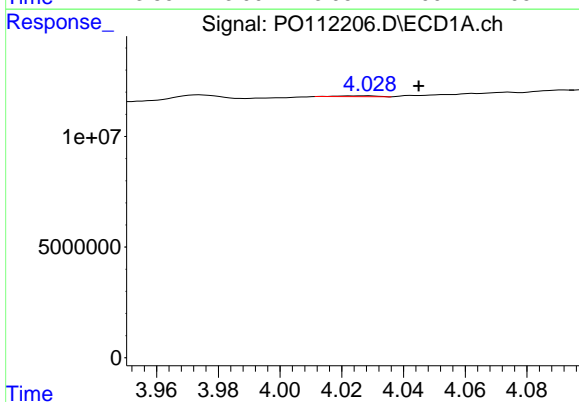
R.T.: 3.974 min
 Delta R.T.: 0.005 min
 Response: 2375785
 Conc: 30.13 ng/ml

Instrument :
 ECD_O
 ClientSampleId :
 I.BLK



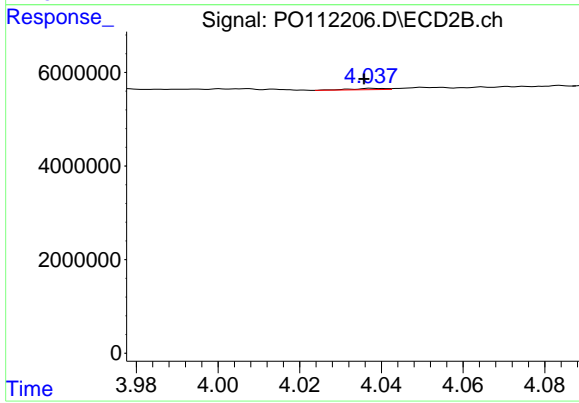
#9 AR-1221-2

R.T.: 3.965 min
 Delta R.T.: 0.004 min
 Response: 2312658
 Conc: 38.96 ng/ml



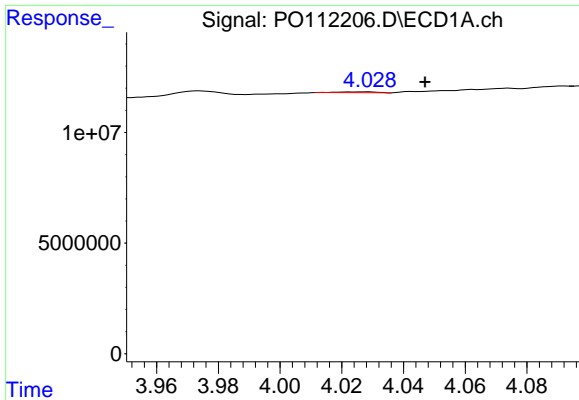
#10 AR-1221-3

R.T.: 4.028 min
 Delta R.T.: -0.017 min
 Response: 361298
 Conc: 1.34 ng/ml



#10 AR-1221-3

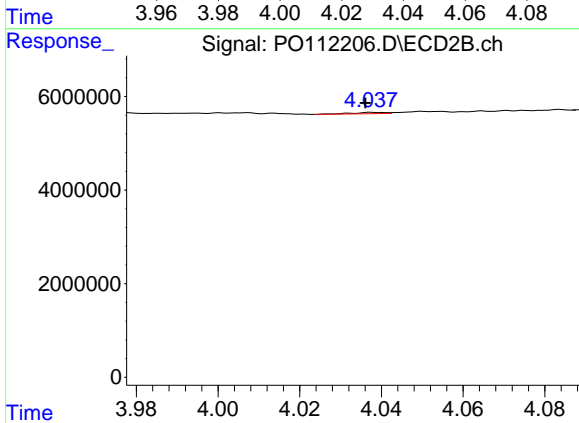
R.T.: 4.038 min
 Delta R.T.: 0.002 min
 Response: 170639
 Conc: 0.90 ng/ml



#11 AR-1232-1

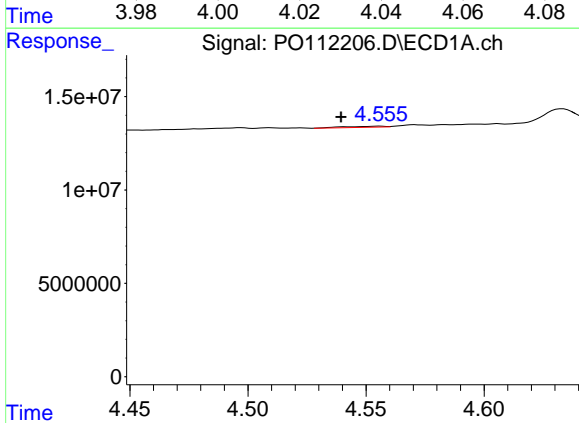
R.T.: 4.028 min
 Delta R.T.: -0.019 min
 Response: 361298
 Conc: 1.68 ng/ml

Instrument :
 ECD_O
 ClientSampleId :
 I.BLK



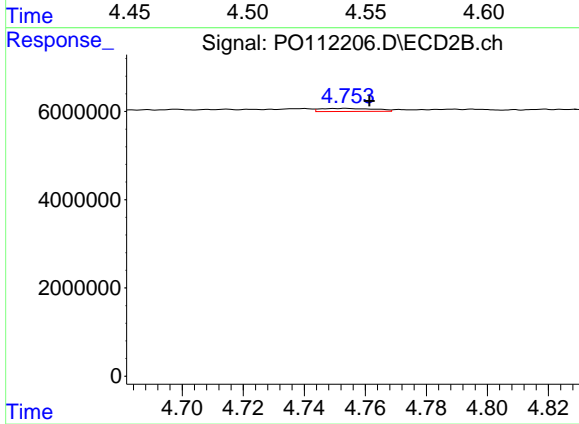
#11 AR-1232-1

R.T.: 4.038 min
 Delta R.T.: 0.002 min
 Response: 170639
 Conc: 1.14 ng/ml



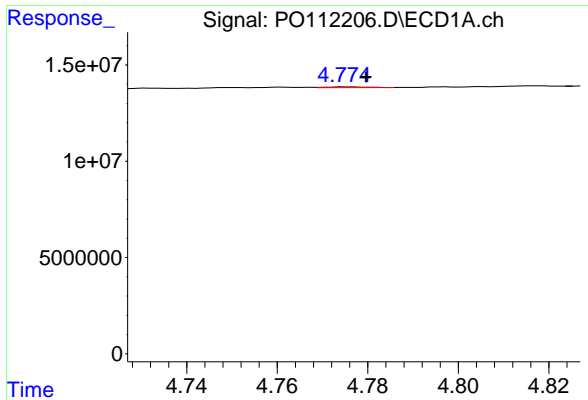
#12 AR-1232-2

R.T.: 4.556 min
 Delta R.T.: 0.017 min
 Response: 673467
 Conc: 5.93 ng/ml



#12 AR-1232-2

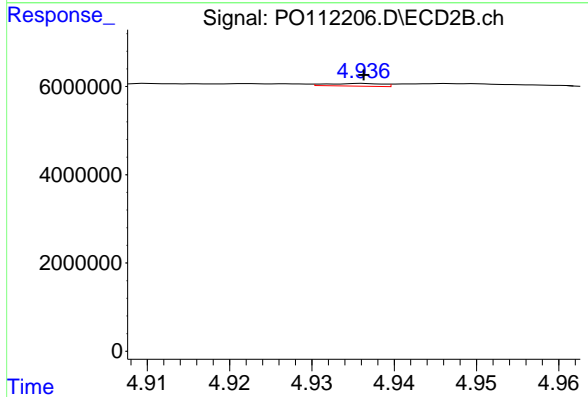
R.T.: 4.754 min
 Delta R.T.: -0.008 min
 Response: 874324
 Conc: 5.71 ng/ml



#13 AR-1232-3

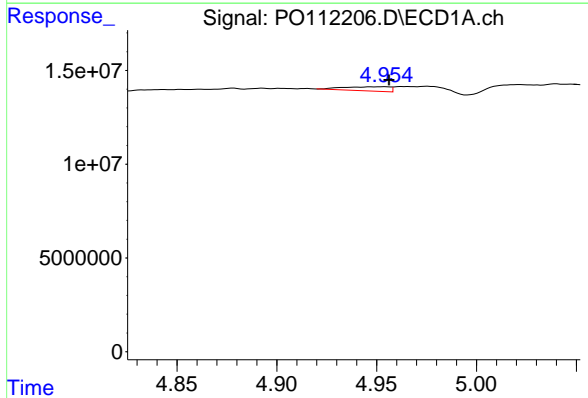
R.T.: 4.776 min
 Delta R.T.: -0.004 min
 Response: 222814
 Conc: 0.97 ng/ml

Instrument :
 ECD_O
 ClientSampleId :
 I.BLK



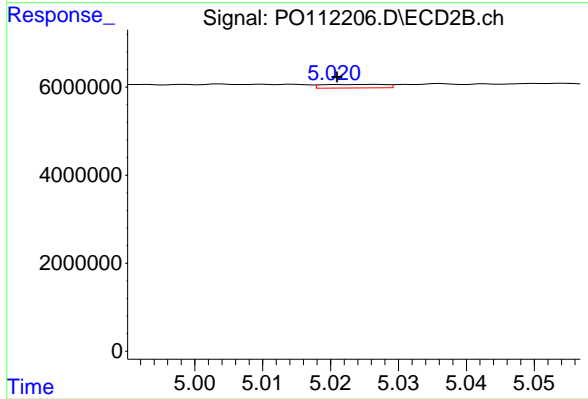
#13 AR-1232-3

R.T.: 4.936 min
 Delta R.T.: 0.000 min
 Response: 281824
 Conc: 3.73 ng/ml



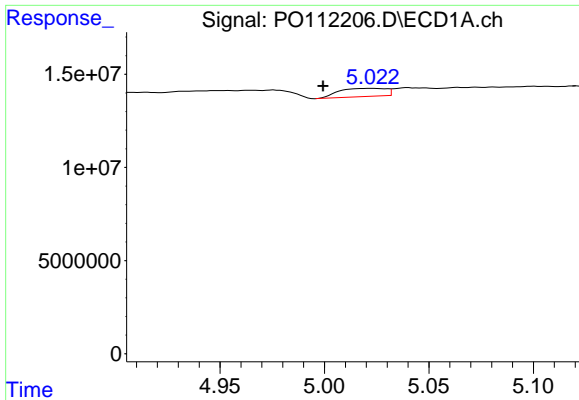
#14 AR-1232-4

R.T.: 4.954 min
 Delta R.T.: -0.002 min
 Response: 3602003
 Conc: 31.51 ng/ml



#14 AR-1232-4

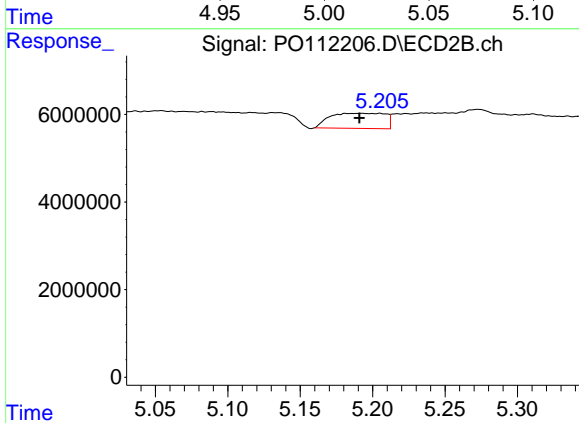
R.T.: 5.026 min
 Delta R.T.: 0.006 min
 Response: 519787
 Conc: 7.88 ng/ml



#15 AR-1232-5

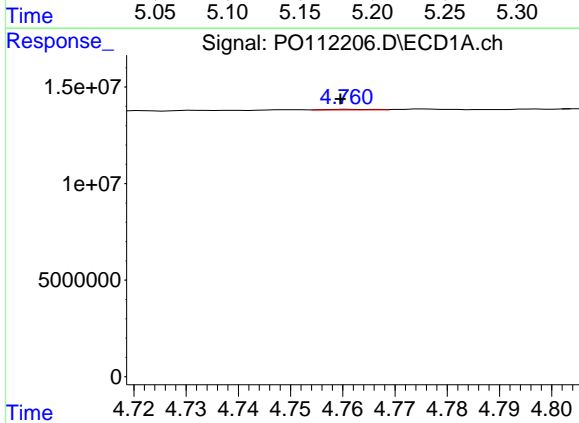
R.T.: 5.022 min
 Delta R.T.: 0.023 min
 Response: 6899538
 Conc: 94.00 ng/ml

Instrument :
 ECD_O
 ClientSampleId :
 I.BLK



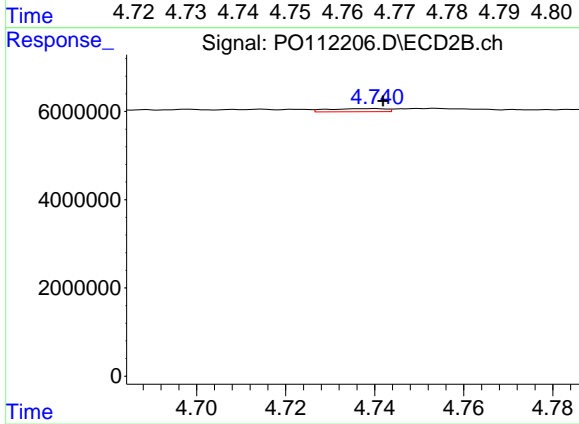
#15 AR-1232-5

R.T.: 5.192 min
 Delta R.T.: 0.001 min
 Response: 9180399
 Conc: 123.63 ng/ml



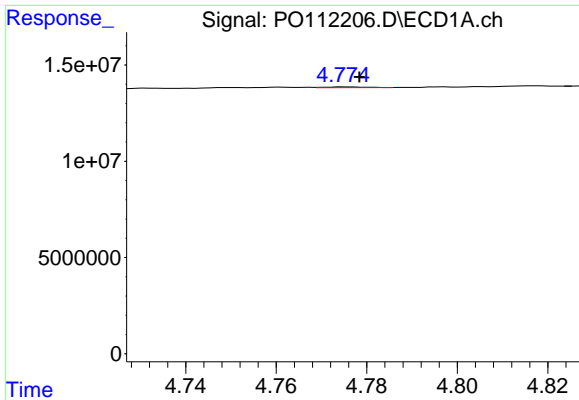
#16 AR-1242-1

R.T.: 4.761 min
 Delta R.T.: 0.001 min
 Response: 199061
 Conc: 0.69 ng/ml



#16 AR-1242-1

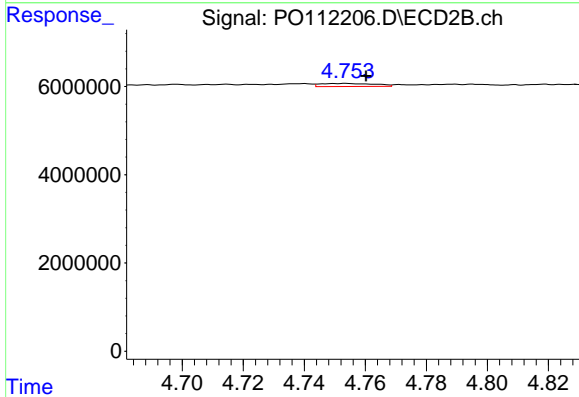
R.T.: 4.740 min
 Delta R.T.: -0.002 min
 Response: 645386
 Conc: 3.33 ng/ml



#17 AR-1242-2

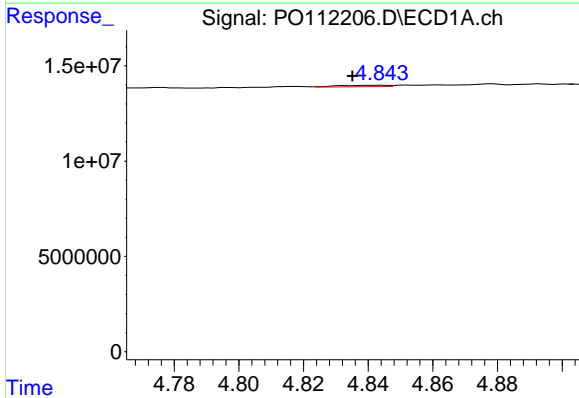
R.T.: 4.776 min
 Delta R.T.: -0.003 min
 Response: 222814
 Conc: 0.52 ng/ml

Instrument :
 ECD_O
 ClientSampleId :
 I.BLK



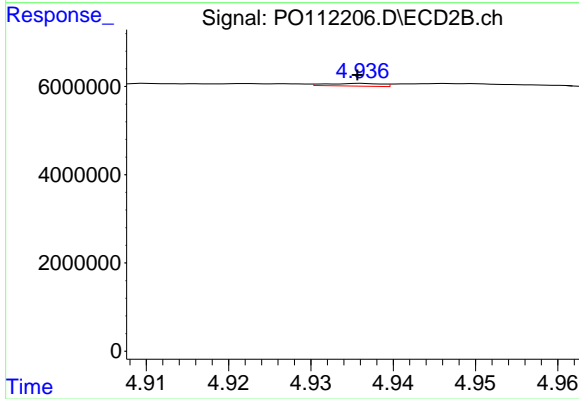
#17 AR-1242-2

R.T.: 4.754 min
 Delta R.T.: -0.007 min
 Response: 874324
 Conc: 3.09 ng/ml



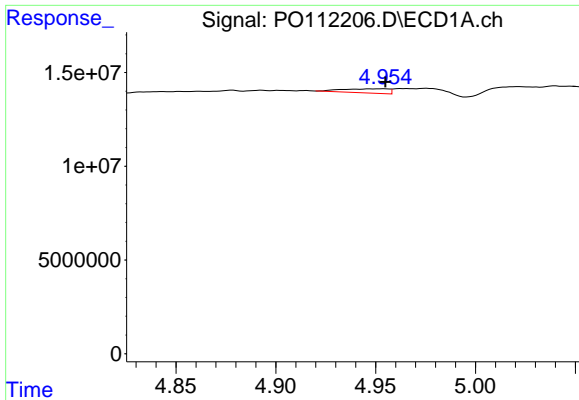
#18 AR-1242-3

R.T.: 4.844 min
 Delta R.T.: 0.009 min
 Response: 771632
 Conc: 2.82 ng/ml



#18 AR-1242-3

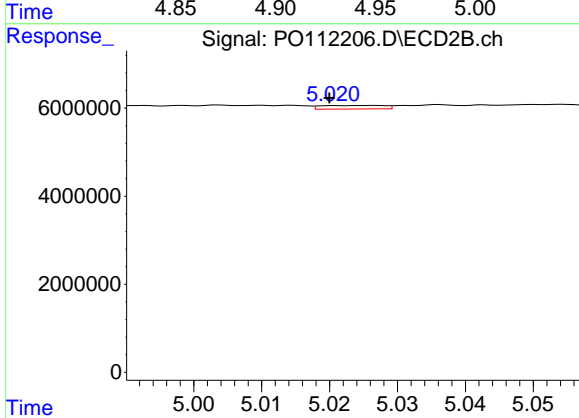
R.T.: 4.936 min
 Delta R.T.: 0.000 min
 Response: 281824
 Conc: 1.93 ng/ml



#19 AR-1242-4

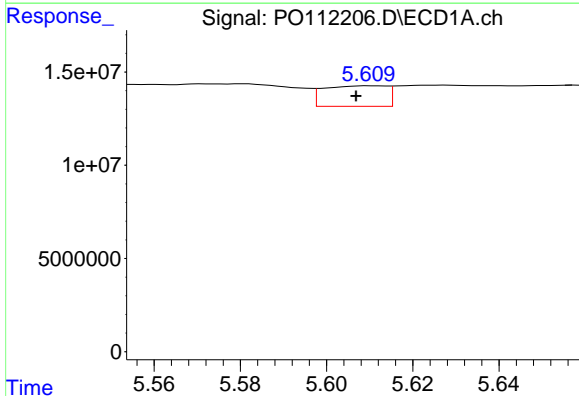
R.T.: 4.954 min
 Delta R.T.: 0.000 min
 Response: 3602003
 Conc: 15.99 ng/ml

Instrument :
 ECD_O
 ClientSampleId :
 I.BLK



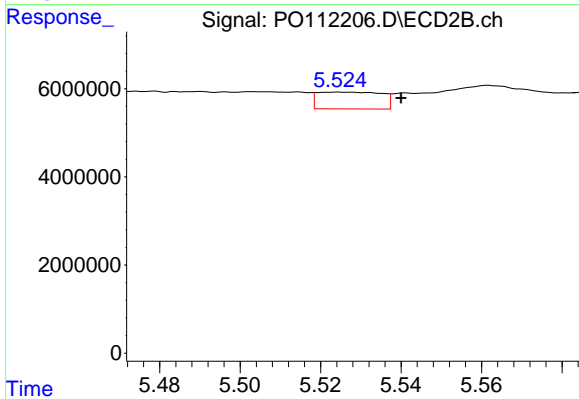
#19 AR-1242-4

R.T.: 5.026 min
 Delta R.T.: 0.006 min
 Response: 519787
 Conc: 3.66 ng/ml



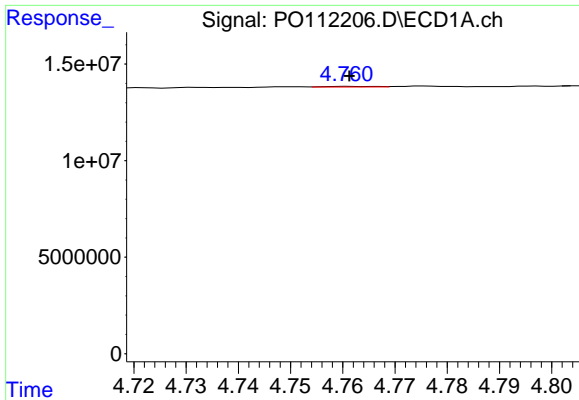
#20 AR-1242-5

R.T.: 5.610 min
 Delta R.T.: 0.003 min
 Response: 11174592
 Conc: 52.79 ng/ml



#20 AR-1242-5

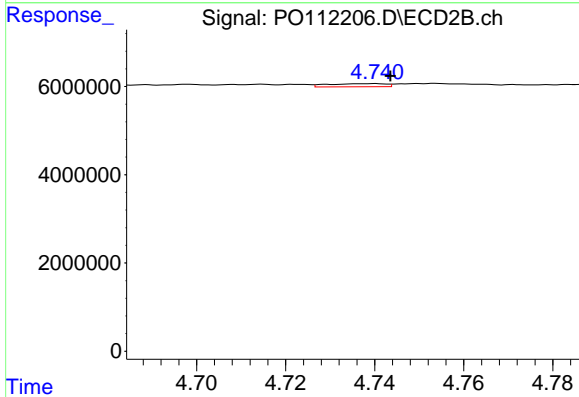
R.T.: 5.525 min
 Delta R.T.: -0.015 min
 Response: 4220222
 Conc: 23.22 ng/ml



#21 AR-1248-1

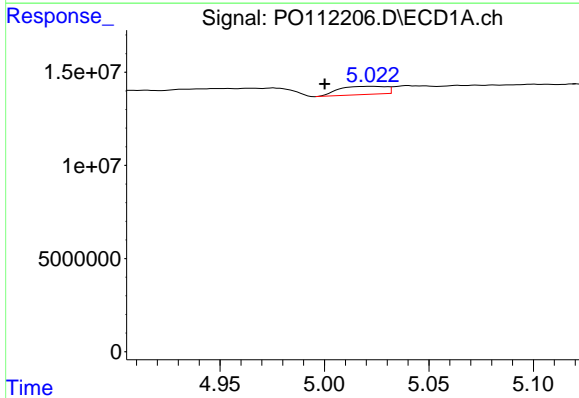
R.T.: 4.761 min
 Delta R.T.: 0.000 min
 Response: 199061
 Conc: 0.88 ng/ml

Instrument :
 ECD_O
 ClientSampleId :
 I.BLK



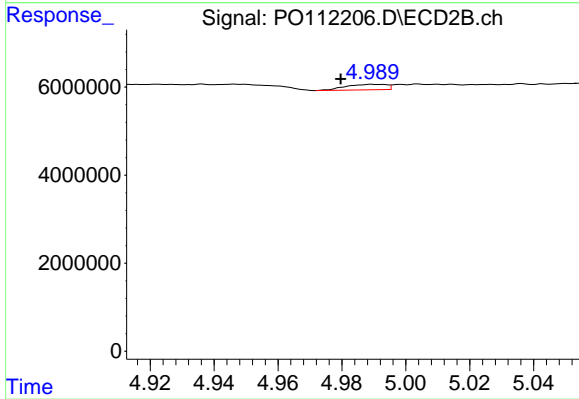
#21 AR-1248-1

R.T.: 4.740 min
 Delta R.T.: -0.003 min
 Response: 645386
 Conc: 4.18 ng/ml



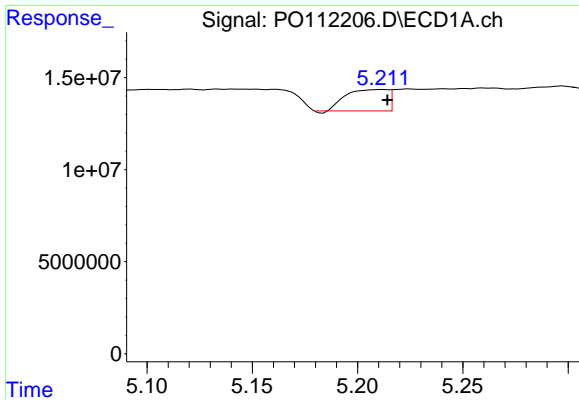
#22 AR-1248-2

R.T.: 5.022 min
 Delta R.T.: 0.022 min
 Response: 6899538
 Conc: 22.38 ng/ml



#22 AR-1248-2

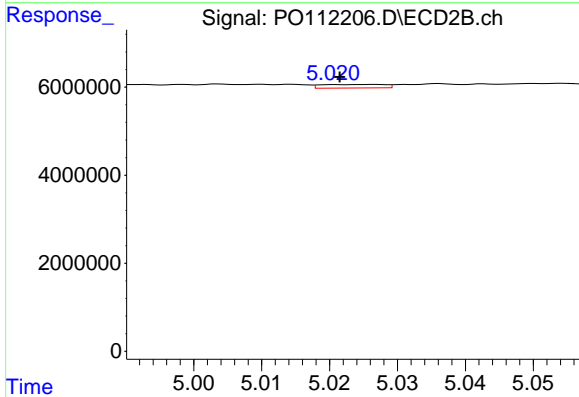
R.T.: 4.989 min
 Delta R.T.: 0.010 min
 Response: 1100319
 Conc: 5.35 ng/ml



#23 AR-1248-3

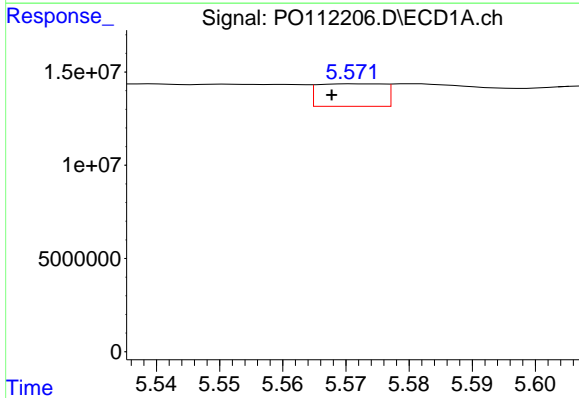
R.T.: 5.212 min
 Delta R.T.: -0.002 min
 Response: 16090471
 Conc: 39.50 ng/ml

Instrument :
 ECD_O
 ClientSampleId :
 I.BLK



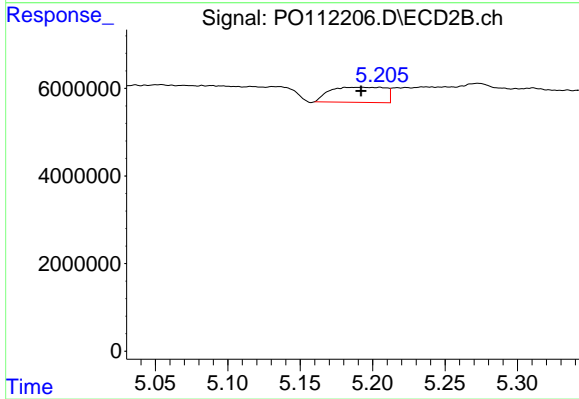
#23 AR-1248-3

R.T.: 5.026 min
 Delta R.T.: 0.005 min
 Response: 519787
 Conc: 2.42 ng/ml



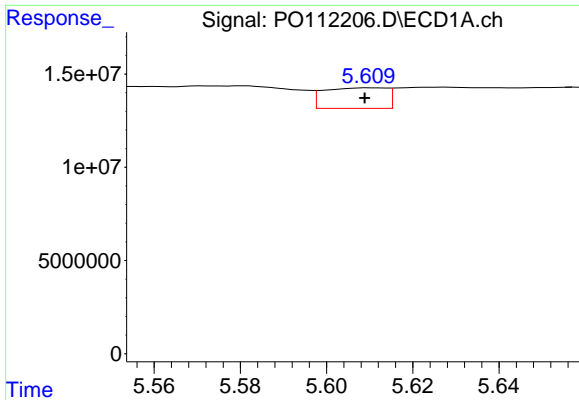
#24 AR-1248-4

R.T.: 5.572 min
 Delta R.T.: 0.004 min
 Response: 8740544
 Conc: 15.14 ng/ml



#24 AR-1248-4

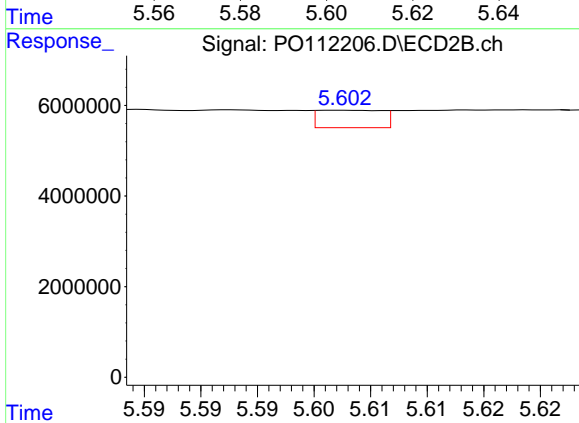
R.T.: 5.192 min
 Delta R.T.: 0.000 min
 Response: 9180399
 Conc: 35.48 ng/ml



#25 AR-1248-5

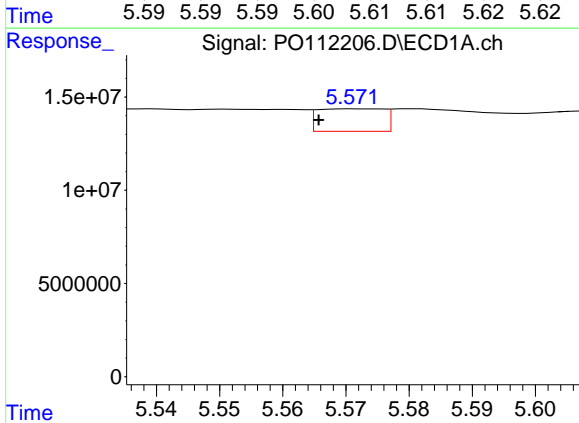
R.T.: 5.610 min
 Delta R.T.: 0.001 min
 Response: 11174592
 Conc: 28.63 ng/ml

Instrument :
 ECD_O
 ClientSampleId :
 I.BLK



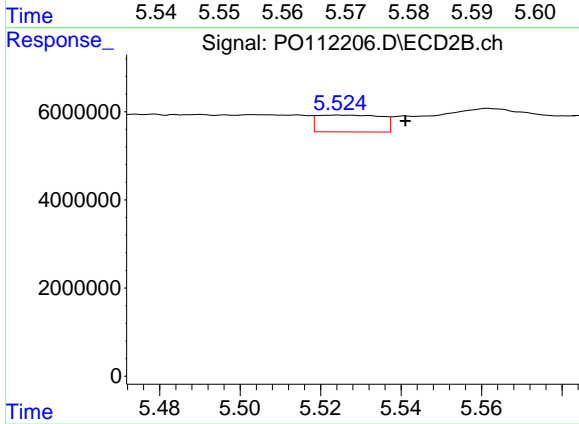
#25 AR-1248-5

R.T.: 5.602 min
 Delta R.T.: 0.020 min
 Response: 1524087
 Conc: 6.08 ng/ml



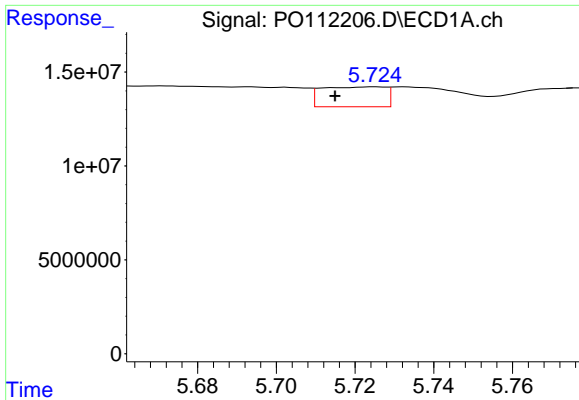
#26 AR-1254-1

R.T.: 5.572 min
 Delta R.T.: 0.006 min
 Response: 8740544
 Conc: 14.21 ng/ml



#26 AR-1254-1

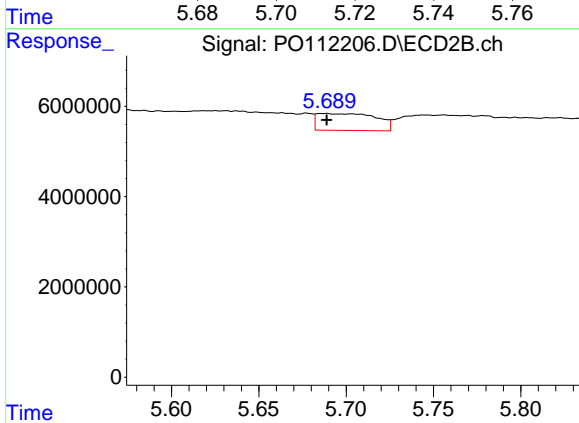
R.T.: 5.525 min
 Delta R.T.: -0.016 min
 Response: 4220222
 Conc: 11.07 ng/ml



#27 AR-1254-2

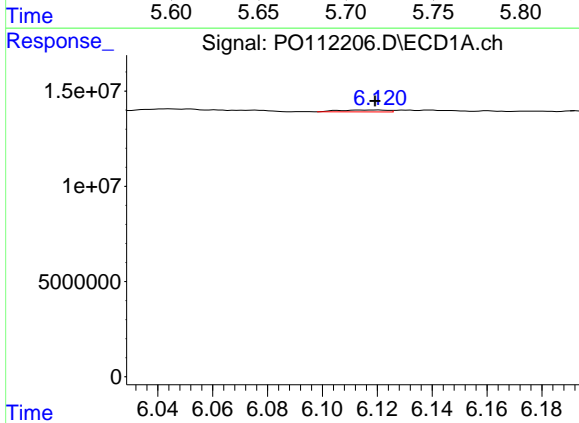
R.T.: 5.725 min
 Delta R.T.: 0.010 min
 Response: 11951277
 Conc: 22.31 ng/ml

Instrument :
 ECD_O
 ClientSampleId :
 I.BLK



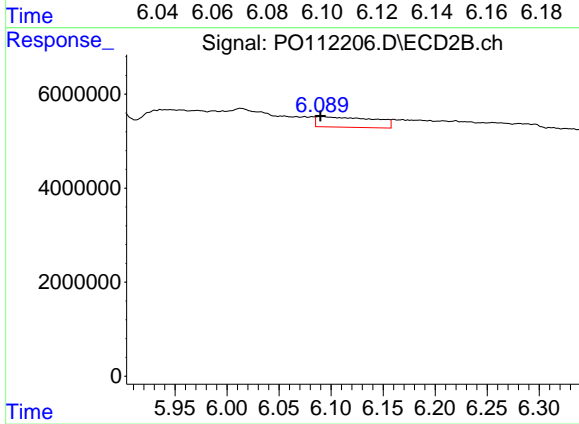
#27 AR-1254-2

R.T.: 5.688 min
 Delta R.T.: 0.000 min
 Response: 8769289
 Conc: 26.43 ng/ml



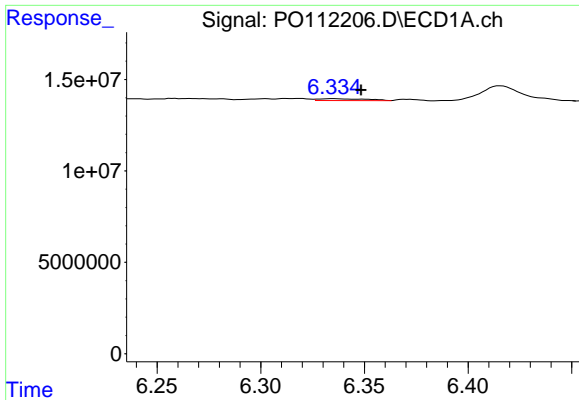
#28 AR-1254-3

R.T.: 6.120 min
 Delta R.T.: 0.001 min
 Response: 1283762
 Conc: 1.53 ng/ml



#28 AR-1254-3

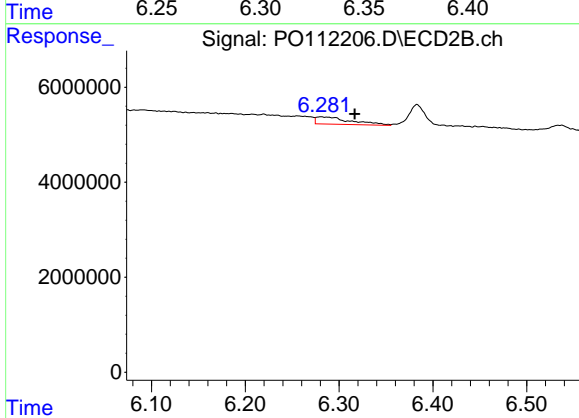
R.T.: 6.090 min
 Delta R.T.: 0.000 min
 Response: 8443599
 Conc: 17.52 ng/ml



#29 AR-1254-4

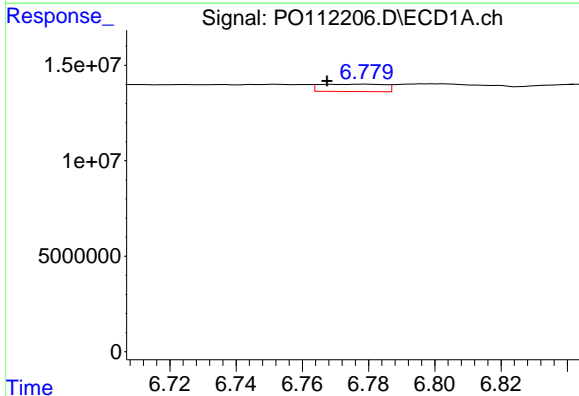
R.T.: 6.335 min
 Delta R.T.: -0.014 min
 Response: 1701645
 Conc: 3.54 ng/ml

Instrument :
 ECD_O
 ClientSampleId :
 I.BLK



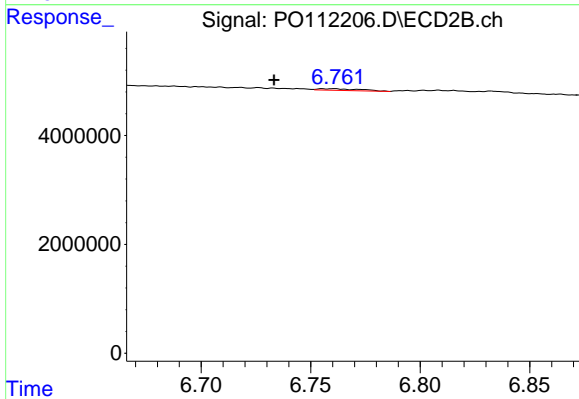
#29 AR-1254-4

R.T.: 6.281 min
 Delta R.T.: -0.036 min
 Response: 3892025
 Conc: 14.93 ng/ml



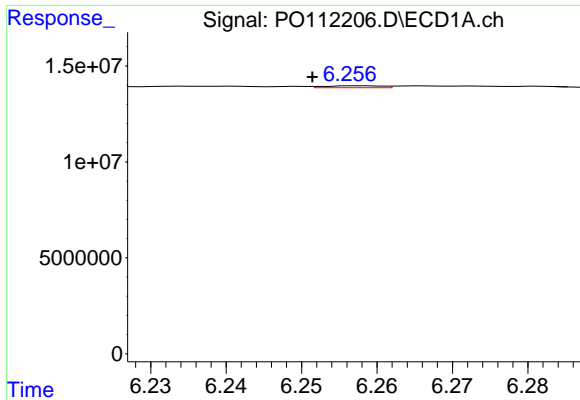
#30 AR-1254-5

R.T.: 6.778 min
 Delta R.T.: 0.011 min
 Response: 5198006
 Conc: 6.72 ng/ml



#30 AR-1254-5

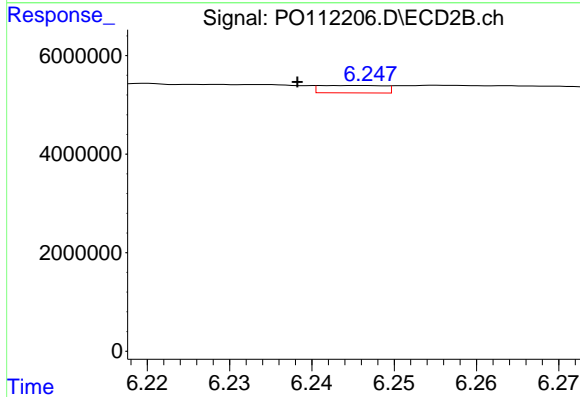
R.T.: 6.761 min
 Delta R.T.: 0.027 min
 Response: 395137
 Conc: 1.11 ng/ml



#31 AR-1260-1

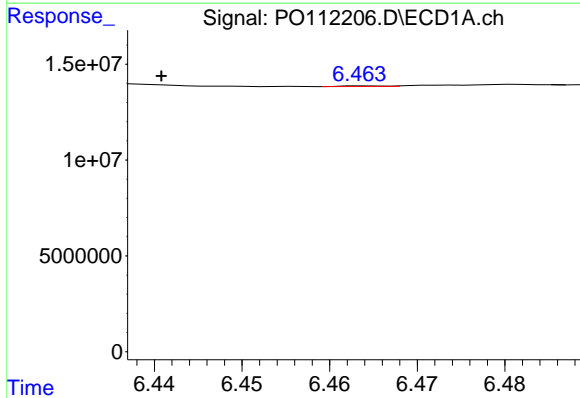
R.T.: 6.258 min
Delta R.T.: 0.006 min
Response: 539055
Conc: 1.08 ng/ml

Instrument :
ECD_O
ClientSampleId :
I.BLK



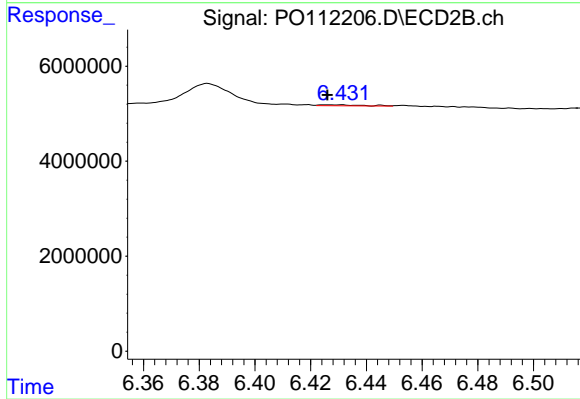
#31 AR-1260-1

R.T.: 6.245 min
Delta R.T.: 0.007 min
Response: 814432
Conc: 2.90 ng/ml



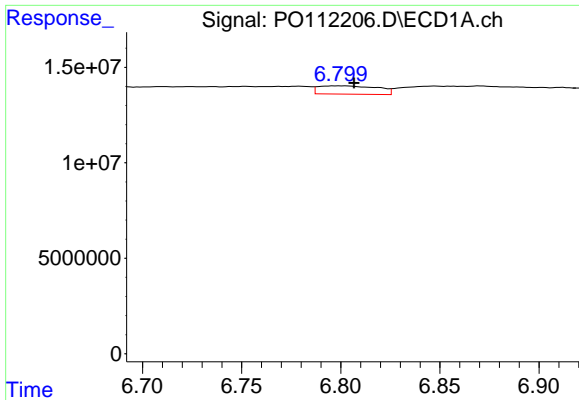
#32 AR-1260-2

R.T.: 6.464 min
Delta R.T.: 0.024 min
Response: 92390
Conc: 0.13 ng/ml



#32 AR-1260-2

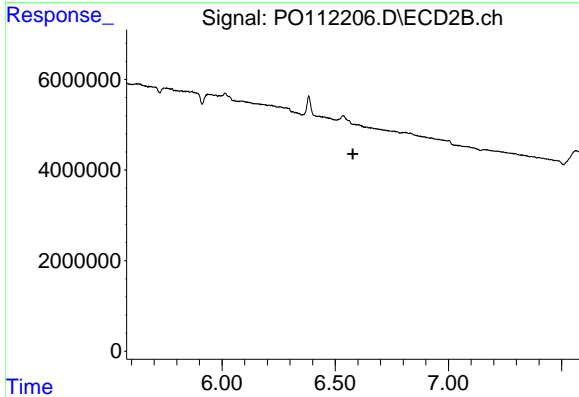
R.T.: 6.431 min
Delta R.T.: 0.005 min
Response: 224475
Conc: 0.66 ng/ml



#33 AR-1260-3

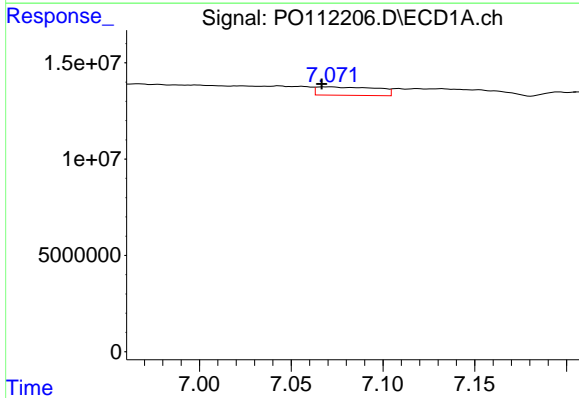
R.T.: 6.798 min
 Delta R.T.: -0.009 min
 Response: 8949664
 Conc: 13.65 ng/ml

Instrument :
 ECD_O
 ClientSampleId :
 I.BLK



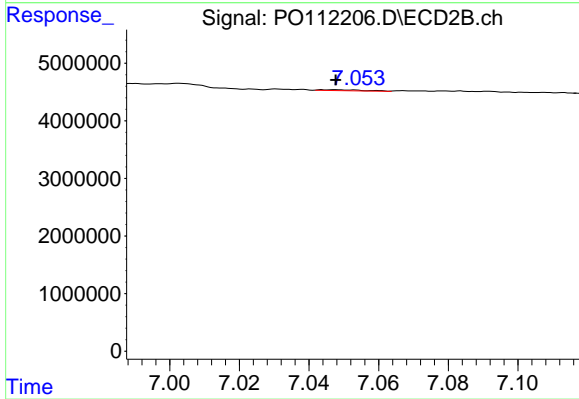
#33 AR-1260-3

R.T.: 6.585 min
 Delta R.T.: 0.007 min
 Response: -105760
 Conc: N.D.



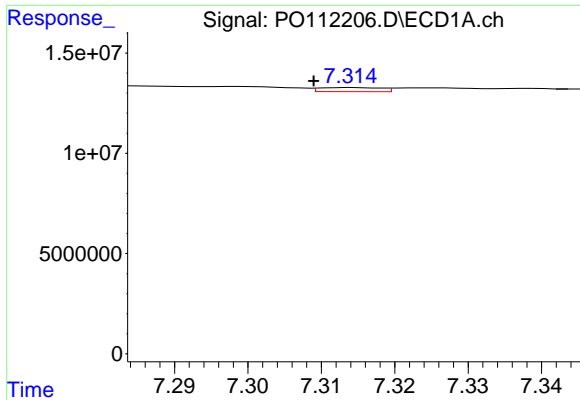
#34 AR-1260-4

R.T.: 7.071 min
 Delta R.T.: 0.004 min
 Response: 9971635
 Conc: 22.91 ng/ml



#34 AR-1260-4

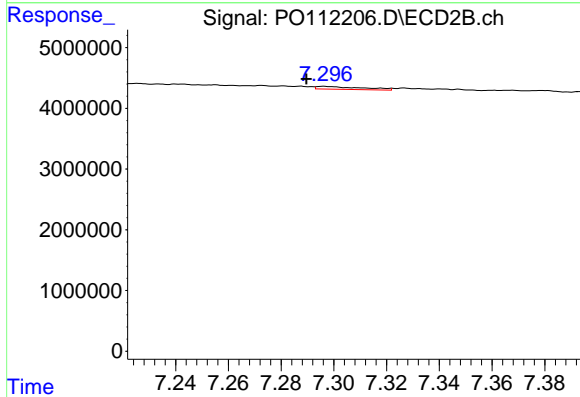
R.T.: 7.047 min
 Delta R.T.: 0.000 min
 Response: 140601
 Conc: 0.70 ng/ml



#35 AR-1260-5

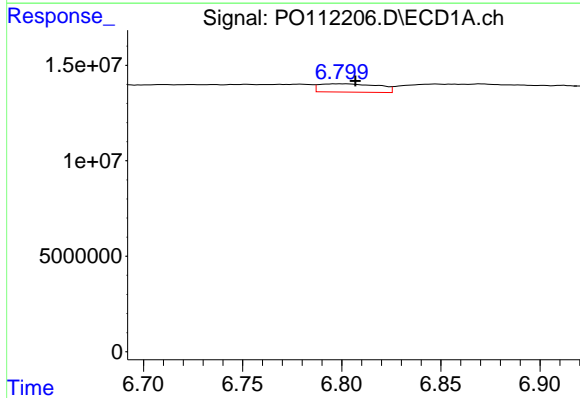
R.T.: 7.314 min
 Delta R.T.: 0.005 min
 Response: 1196228
 Conc: 0.95 ng/ml

Instrument :
 ECD_O
 ClientSampleId :
 I.BLK



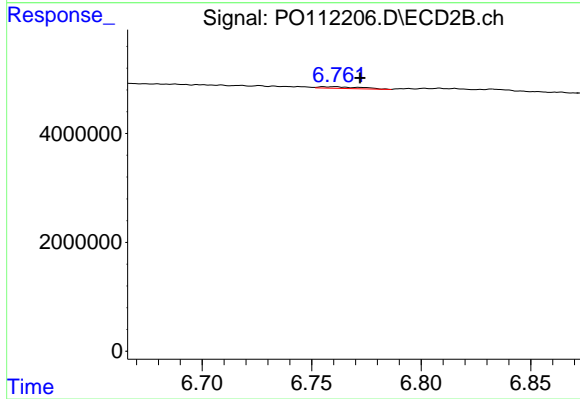
#35 AR-1260-5

R.T.: 7.296 min
 Delta R.T.: 0.007 min
 Response: 578860
 Conc: 1.29 ng/ml



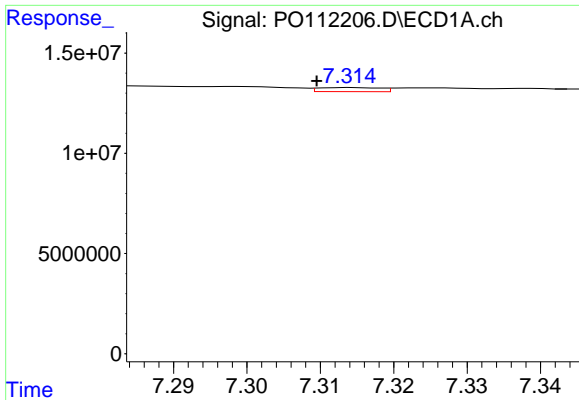
#36 AR-1262-1

R.T.: 6.798 min
 Delta R.T.: -0.009 min
 Response: 8949664
 Conc: 8.76 ng/ml



#36 AR-1262-1

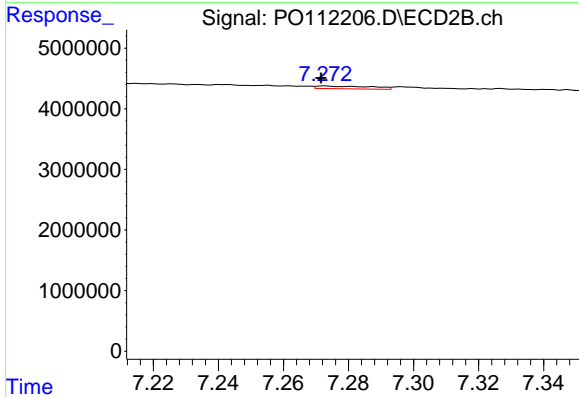
R.T.: 6.761 min
 Delta R.T.: -0.011 min
 Response: 395137
 Conc: 0.97 ng/ml



#37 AR-1262-2

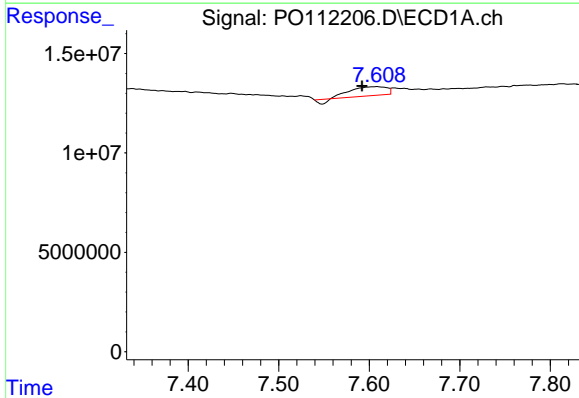
R.T.: 7.314 min
 Delta R.T.: 0.005 min
 Response: 1196228
 Conc: 0.73 ng/ml

Instrument :
 ECD_O
 ClientSampleId :
 I.BLK



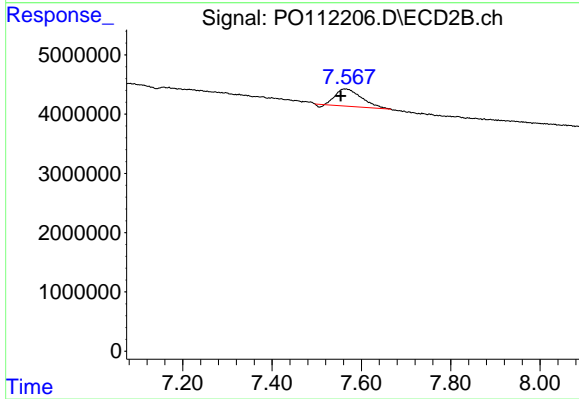
#37 AR-1262-2

R.T.: 7.272 min
 Delta R.T.: 0.000 min
 Response: 530009
 Conc: 1.03 ng/ml



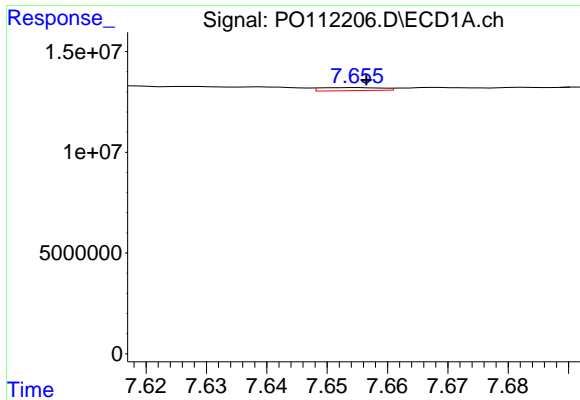
#38 AR-1262-3

R.T.: 7.609 min
 Delta R.T.: 0.017 min
 Response: 11499815
 Conc: 17.91 ng/ml



#38 AR-1262-3

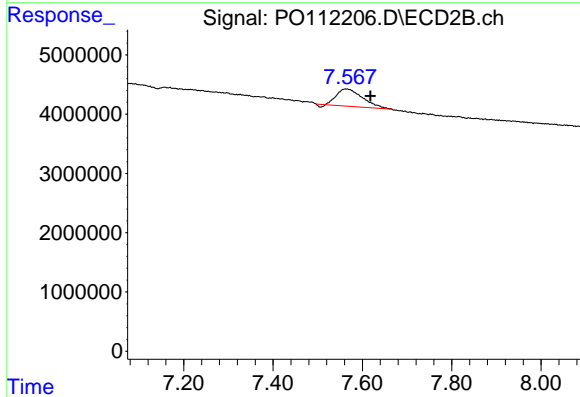
R.T.: 7.566 min
 Delta R.T.: 0.012 min
 Response: 11465194
 Conc: 63.86 ng/ml



#39 AR-1262-4

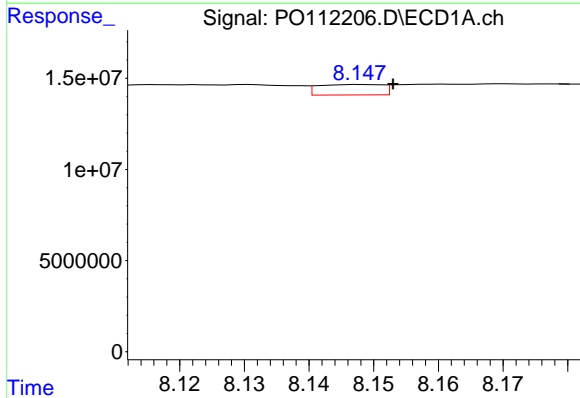
R.T.: 7.655 min
 Delta R.T.: -0.002 min
 Response: 1049462
 Conc: 0.98 ng/ml

Instrument :
 ECD_O
 ClientSampleId :
 I.BLK



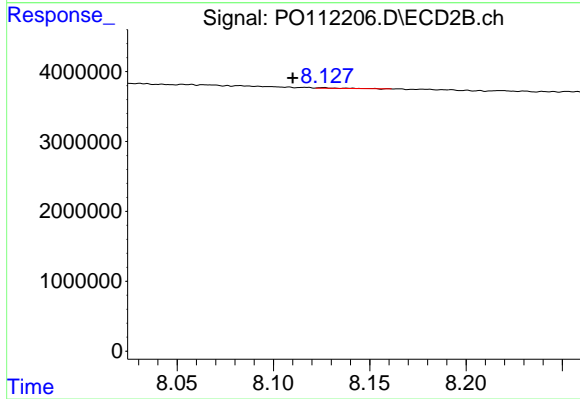
#39 AR-1262-4

R.T.: 7.566 min
 Delta R.T.: -0.052 min
 Response: 11465194
 Conc: 39.41 ng/ml



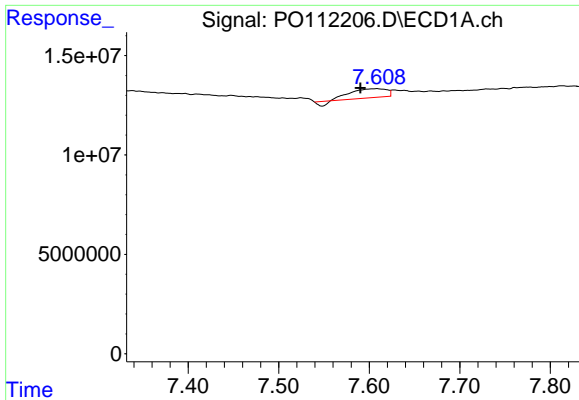
#40 AR-1262-5

R.T.: 8.148 min
 Delta R.T.: -0.005 min
 Response: 3938993
 Conc: 8.79 ng/ml



#40 AR-1262-5

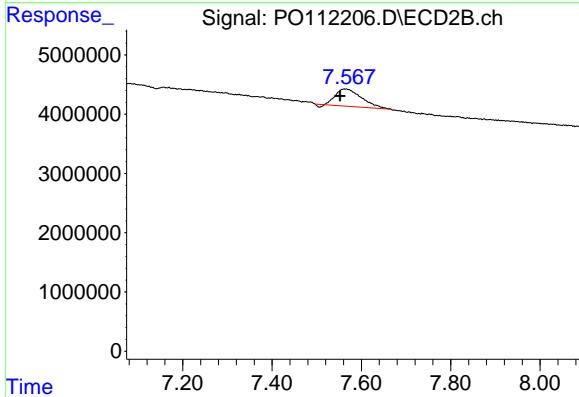
R.T.: 8.126 min
 Delta R.T.: 0.016 min
 Response: 19485
 Conc: 0.18 ng/ml



#41 AR-1268-1

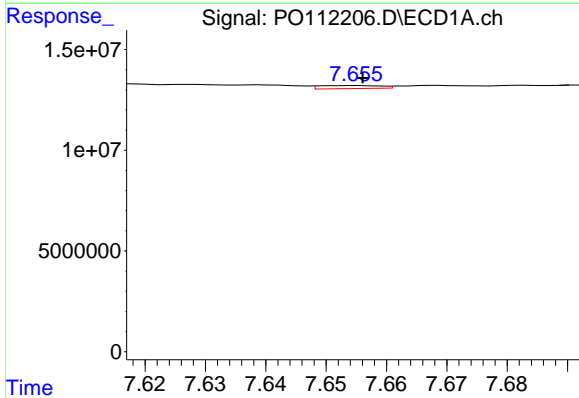
R.T.: 7.609 min
 Delta R.T.: 0.018 min
 Response: 11499815
 Conc: 6.26 ng/ml

Instrument :
 ECD_O
 ClientSampleId :
 I.BLK



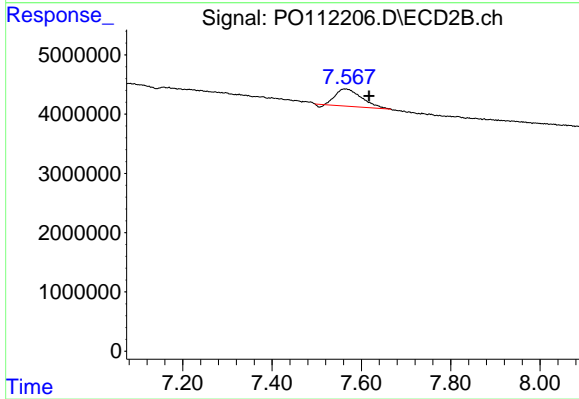
#41 AR-1268-1

R.T.: 7.566 min
 Delta R.T.: 0.014 min
 Response: 11465194
 Conc: 23.33 ng/ml



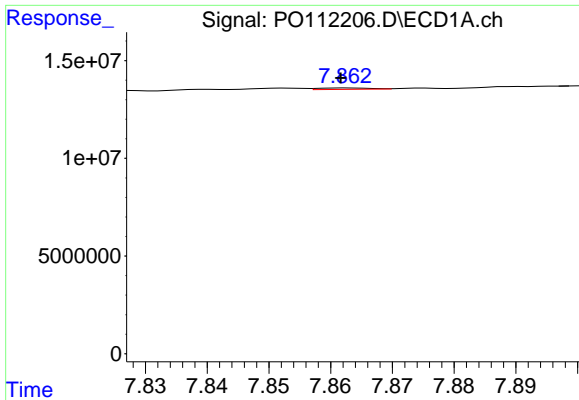
#42 AR-1268-2

R.T.: 7.655 min
 Delta R.T.: -0.001 min
 Response: 1049462
 Conc: 0.67 ng/ml



#42 AR-1268-2

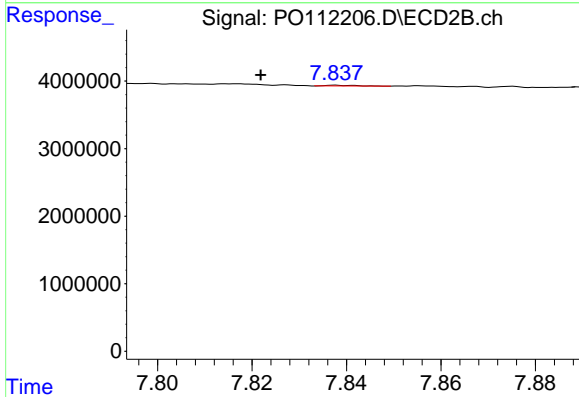
R.T.: 7.566 min
 Delta R.T.: -0.052 min
 Response: 11465194
 Conc: 27.48 ng/ml



#43 AR-1268-3

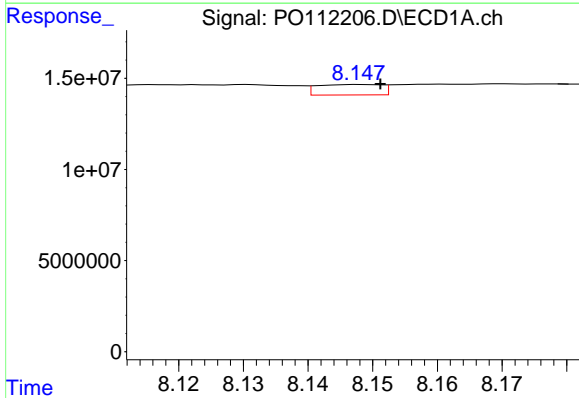
R.T.: 7.863 min
 Delta R.T.: 0.000 min
 Response: 404091
 Conc: 0.31 ng/ml

Instrument :
 ECD_O
 ClientSampleId :
 I.BLK



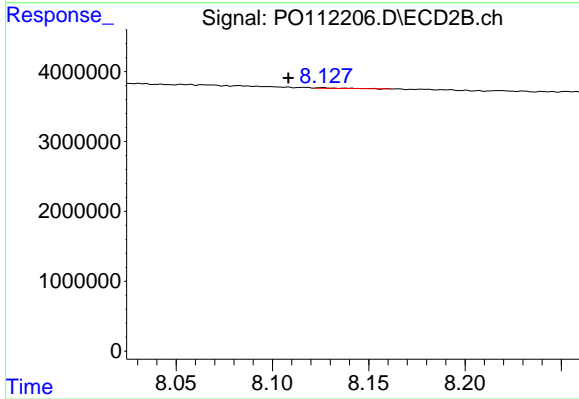
#43 AR-1268-3

R.T.: 7.838 min
 Delta R.T.: 0.016 min
 Response: 51074
 Conc: 0.16 ng/ml



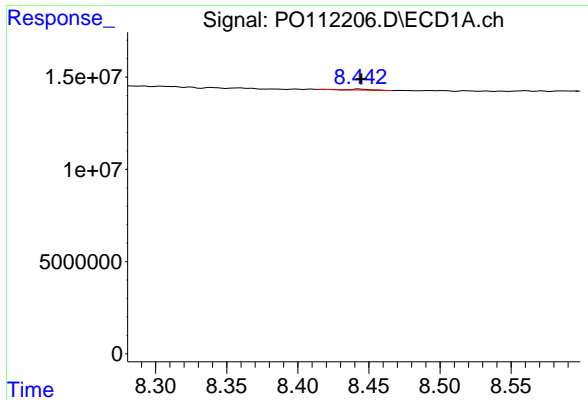
#44 AR-1268-4

R.T.: 8.148 min
 Delta R.T.: -0.003 min
 Response: 3938993
 Conc: 8.20 ng/ml



#44 AR-1268-4

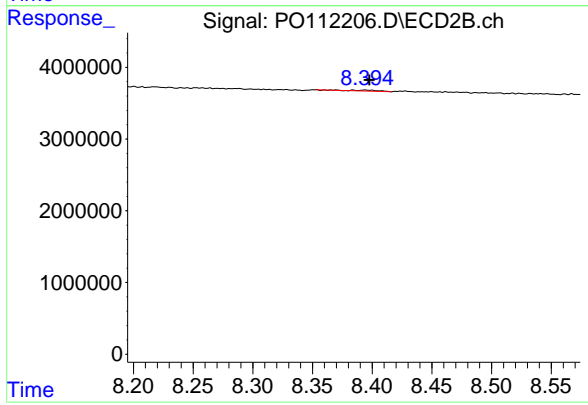
R.T.: 8.126 min
 Delta R.T.: 0.018 min
 Response: 19485
 Conc: 0.17 ng/ml



#45 AR-1268-5

R.T.: 8.443 min
 Delta R.T.: -0.002 min
 Response: 436116
 Conc: 0.13 ng/ml

Instrument :
 ECD_O
 ClientSampleId :
 I.BLK



#45 AR-1268-5

R.T.: 8.394 min
 Delta R.T.: -0.004 min
 Response: 210205
 Conc: 0.29 ng/ml