

Data Path : Z:\pestpcbsrv\HPCHEM1\ECD\_O\Data\PO071118\  
 Data File : PO046567.D  
 Signal(s) : Signal #1: ECD1A.CH Signal #2: ECD2B.CH  
 Acq On : 11 Jul 2018 17:14  
 Operator : SM/SJ  
 Sample : J3931-01  
 Misc :  
 ALS Vial : 7 Sample Multiplier: 1

Instrument :  
 ECD\_O  
 ClientSampleId :  
 070918-DBRI-E-D-B

Integration File signal 1: autoint1.e  
 Integration File signal 2: autoint2.e  
 Quant Time: Jul 12 04:05:14 2018  
 Quant Method : Z:\pestpcbsrv\HPCHEM1\ECD\_O\methods\PO070718.M  
 Quant Title : GC EXTRACTABLES  
 QLast Update : Mon Jul 09 15:27:34 2018  
 Response via : Initial Calibration  
 Integrator: ChemStation 6890 Scale Mode: Small noise peaks clipped

Volume Inj. : 2 µl  
 Signal #1 Phase : ZB-MR1 Signal #2 Phase: ZB-MR2  
 Signal #1 Info : 30Mx0.32mmx 0.50µ Signal #2 Info : 30M x 0.32mm x 0.25µm

Compound	RT#1	RT#2	Resp#1	Resp#2	ng/ml	ng/ml
-----						
System Monitoring Compounds						
1) SA Tetrachlo...	4.203	3.530	4418262	3213870	18.488	15.131
2) SA Decachlor...	9.732	8.461	2924980	2768020	15.346	14.270
Target Compounds						
3) L1 AR-1016-1	5.155	4.376	648008	220013	114.875	40.301 #
4) L1 AR-1016-2	5.508	4.839	861227	267608	120.334	55.190 #
5) L1 AR-1016-3	5.508	4.912	861227	345679	143.282	59.326 #
6) L1 AR-1016-4	5.847	5.072	325450	-42226	55.801	N.D. #
7) L1 AR-1016-5	5.938	5.184	481109	314796	73.970	57.124
8) L2 AR-1221-1	4.379	3.764	426215	182694	133.922	68.318 #
9) L2 AR-1221-2	4.507	3.845	596386	431107	252.135	199.959
10) L2 AR-1221-3	4.577	3.913	2407270	824791	318.475	120.390 #
11) L3 AR-1232-1	4.924	4.196	1015280	589493	415.383	253.956 #
12) L3 AR-1232-2	5.316	4.616	594663	236844	167.979	68.754 #
13) L3 AR-1232-3	5.316	4.639	594663	363266	117.158	76.145 #
14) L3 AR-1232-4	5.508	4.639	861227	363266	264.293	103.366 #
15) L3 AR-1232-5	5.508	4.802	861227	489045	324.347	175.571 #
16) L4 AR-1242-1	5.316	4.639	594663	363266	58.483	37.920 #
17) L4 AR-1242-2	5.508	4.802	861227	489045	133.034	88.111 #
18) L4 AR-1242-3	5.508	4.912	861227	345679	158.079	66.571 #
19) L4 AR-1242-4	5.847	5.072	325450	-42226	60.921	N.D. #
20) L4 AR-1242-5	5.938	5.184	481109	314796	79.757	60.769
21) L5 AR-1248-1	5.847	5.072	325450	-42226	41.020	N.D. #
22) L5 AR-1248-2	5.938	5.184	481109	314796	67.944	49.319 #
23) L5 AR-1248-3	0.000	5.402	0	148730	N.D.	12.087 #
24) L5 AR-1248-4	0.000	5.435	0	127460	N.D.	14.642 #
25) L5 AR-1248-5	6.453	0.000	203140	0	22.321	N.D. #
26) L6 AR-1254-1	6.453	5.402	203140	148730	14.569	11.123
30) L6 AR-1254-5	0.000	6.463	0	358505	N.D.	39.526 #
31) L7 AR-1260-1	0.000	6.086	0	265099	N.D.	20.323 #
32) L7 AR-1260-2	0.000	6.251	0	177712	N.D.	11.145 #
33) L7 AR-1260-3	0.000	6.569	0	310029	N.D.	17.288 #
34) L7 AR-1260-4	0.000	7.112	0	483656	N.D.	17.409 #
35) L7 AR-1260-5	0.000	7.416	0	126429	N.D.	6.581 #
36) L8 AR-1262-1	0.000	6.251	0	177712	N.D.	13.569 #
37) L8 AR-1262-2	0.000	6.388	0	238028	N.D.	18.375 #
38) L8 AR-1262-3	0.000	6.569	0	310029	N.D.	17.704 #
39) L8 AR-1262-4	7.733	6.851	174158	860195	12.953	56.269 #
40) L8 AR-1262-5	0.000	7.112	0	483656	N.D.	15.668 #
41) L9 AR-1268-1	0.000	7.416	0	126429	N.D.	4.518 #

Data Path : Z:\pestpcbsrv\HPCHEM1\ECD\_O\Data\PO071118\  
 Data File : PO046567.D  
 Signal(s) : Signal #1: ECD1A.CH Signal #2: ECD2B.CH  
 Acq On : 11 Jul 2018 17:14  
 Operator : SM/SJ  
 Sample : J3931-01  
 Misc :  
 ALS Vial : 7 Sample Multiplier: 1

**Instrument :**  
 ECD\_O  
**ClientSampleId :**  
 070918-DBRI-E-D-B

Integration File signal 1: autoint1.e  
 Integration File signal 2: autoint2.e  
 Quant Time: Jul 12 04:05:14 2018  
 Quant Method : Z:\pestpcbsrv\HPCHEM1\ECD\_O\methods\PO070718.M  
 Quant Title : GC EXTRACTABLES  
 QLast Update : Mon Jul 09 15:27:34 2018  
 Response via : Initial Calibration  
 Integrator: ChemStation 6890 Scale Mode: Small noise peaks clipped

Volume Inj. : 2 µl  
 Signal #1 Phase : ZB-MR1 Signal #2 Phase: ZB-MR2  
 Signal #1 Info : 30Mx0.32mmx 0.50µ Signal #2 Info : 30M x 0.32mm x 0.25µm

Compound	RT#1	RT#2	Resp#1	Resp#2	ng/ml	ng/ml
42) L9 AR-1268-2	0.000	7.416	0	126429	N.D.	4.589 #
43) L9 AR-1268-3	0.000	7.706	0	171920	N.D.	7.701 #

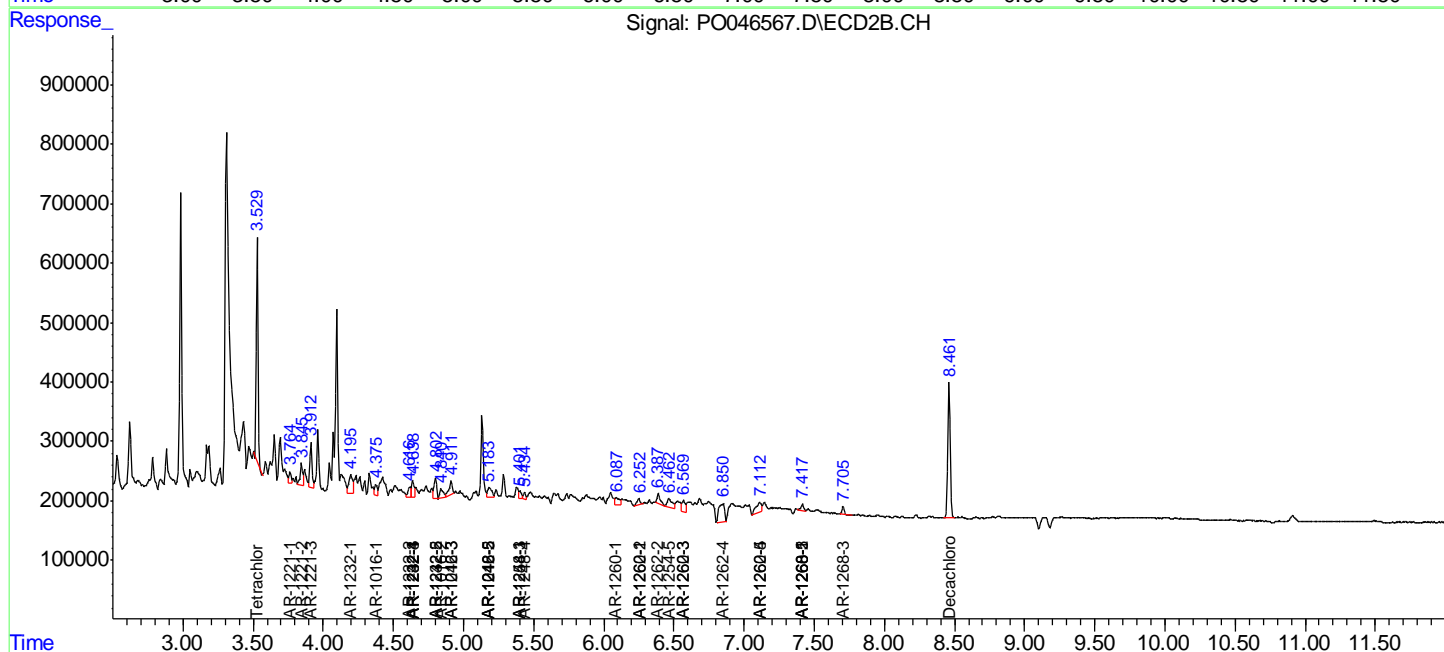
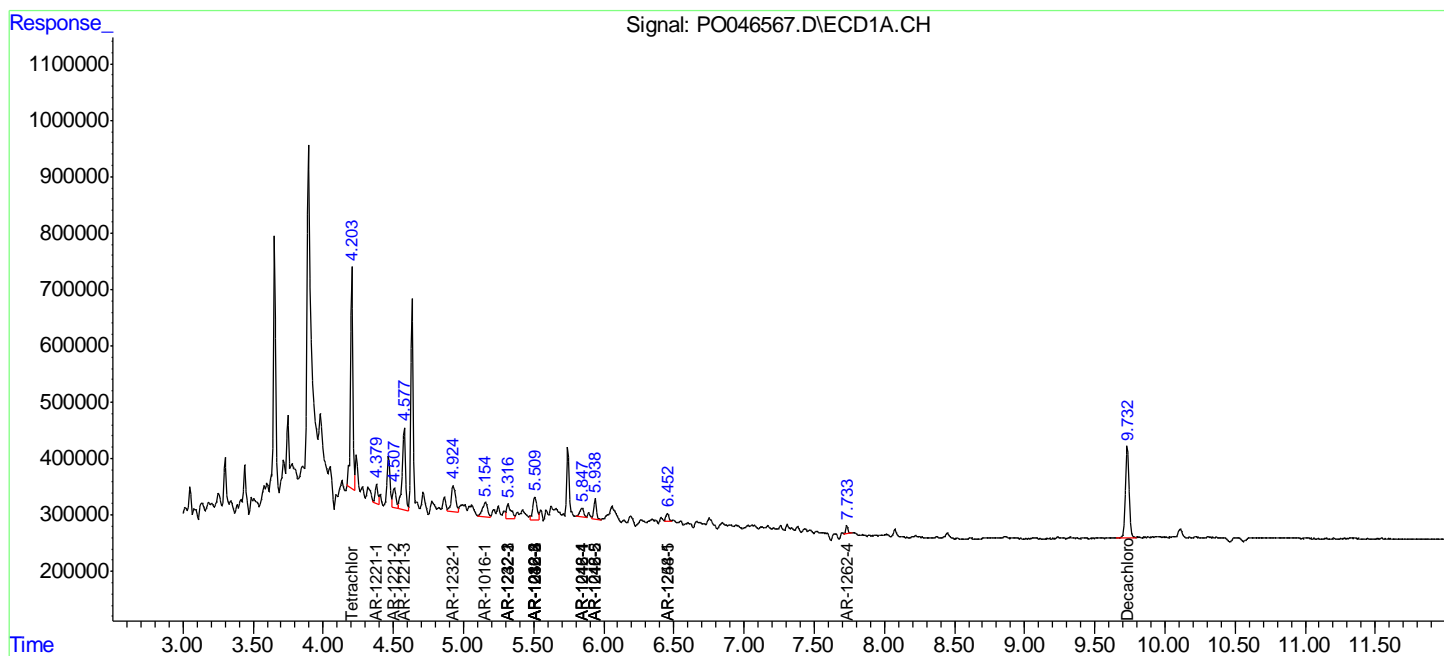
(f)=RT Delta > 1/2 Window (#)=Amounts differ by > 25% (m)=manual int.

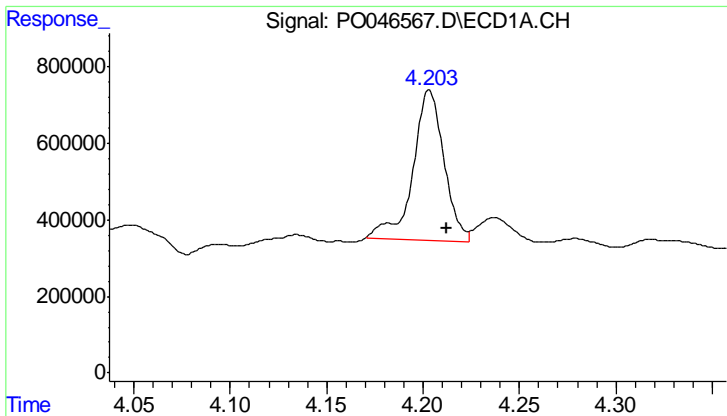
Data Path : Z:\pestpcbsrv\HPCHEM1\ECD\_O\Data\PO071118\  
 Data File : PO046567.D  
 Signal(s) : Signal #1: ECD1A.CH Signal #2: ECD2B.CH  
 Acq On : 11 Jul 2018 17:14  
 Operator : SM/SJ  
 Sample : J3931-01  
 Misc :  
 ALS Vial : 7 Sample Multiplier: 1

Instrument :  
 ECD\_O  
 ClientSampleId :  
 070918-DBRI-E-D-B

Integration File signal 1: autoint1.e  
 Integration File signal 2: autoint2.e  
 Quant Time: Jul 12 04:05:14 2018  
 Quant Method : Z:\pestpcbsrv\HPCHEM1\ECD\_O\methods\PO070718.M  
 Quant Title : GC EXTRACTABLES  
 QLast Update : Mon Jul 09 15:27:34 2018  
 Response via : Initial Calibration  
 Integrator: ChemStation 6890 Scale Mode: Small noise peaks clipped

Volume Inj. : 2 µl  
 Signal #1 Phase : ZB-MR1 Signal #2 Phase: ZB-MR2  
 Signal #1 Info : 30Mx0.32mmx 0.50µ Signal #2 Info : 30M x 0.32mm x 0.25µm

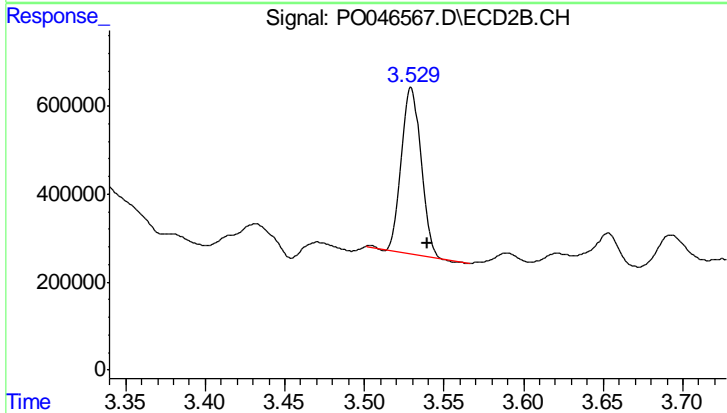




#1 Tetrachloro-m-xylene

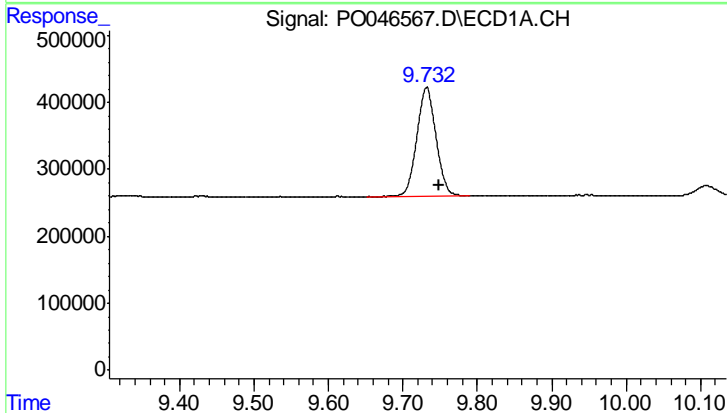
R.T.: 4.203 min  
 Delta R.T.: -0.009 min  
 Response: 4418262  
 Conc: 18.49 ng/ml

Instrument :  
 ECD\_O  
 ClientSampleId :  
 070918-DBRI-E-D-B



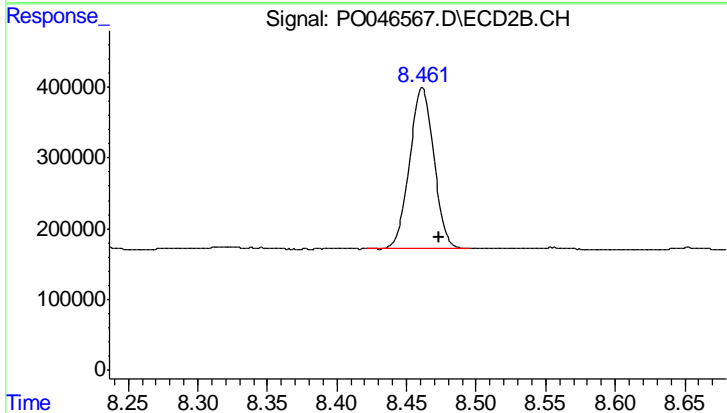
#1 Tetrachloro-m-xylene

R.T.: 3.530 min  
 Delta R.T.: -0.010 min  
 Response: 3213870  
 Conc: 15.13 ng/ml



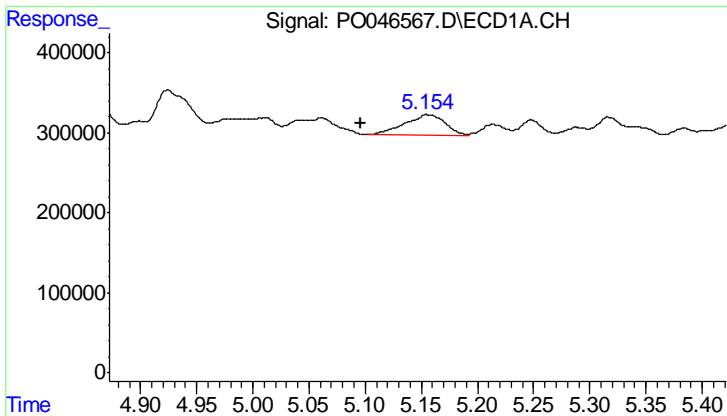
#2 Decachlorobiphenyl

R.T.: 9.732 min  
 Delta R.T.: -0.016 min  
 Response: 2924980  
 Conc: 15.35 ng/ml



#2 Decachlorobiphenyl

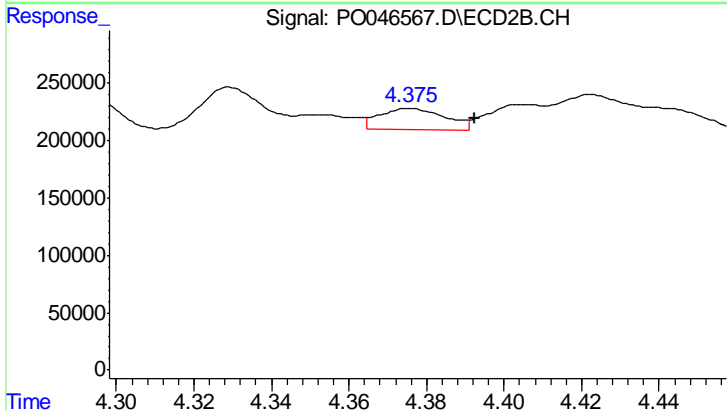
R.T.: 8.461 min  
 Delta R.T.: -0.012 min  
 Response: 2768020  
 Conc: 14.27 ng/ml



#3 AR-1016-1

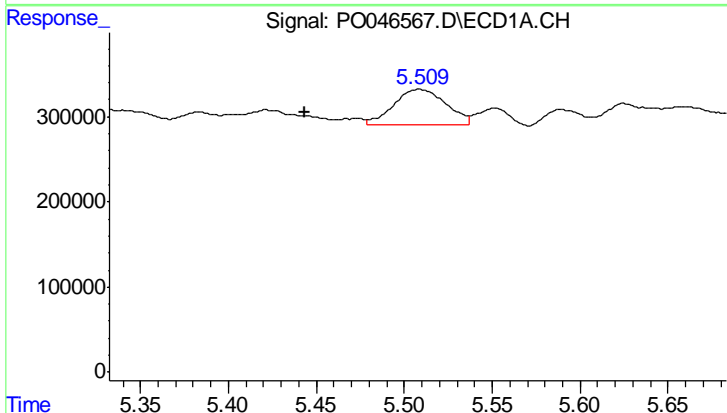
R.T.: 5.155 min  
 Delta R.T.: 0.059 min  
 Response: 648008  
 Conc: 114.88 ng/ml

Instrument :  
 ECD\_O  
 ClientSampleId :  
 070918-DBRI-E-D-B



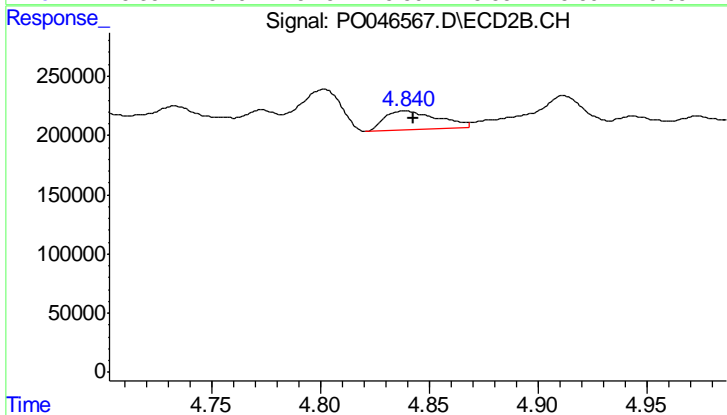
#3 AR-1016-1

R.T.: 4.376 min  
 Delta R.T.: -0.017 min  
 Response: 220013  
 Conc: 40.30 ng/ml



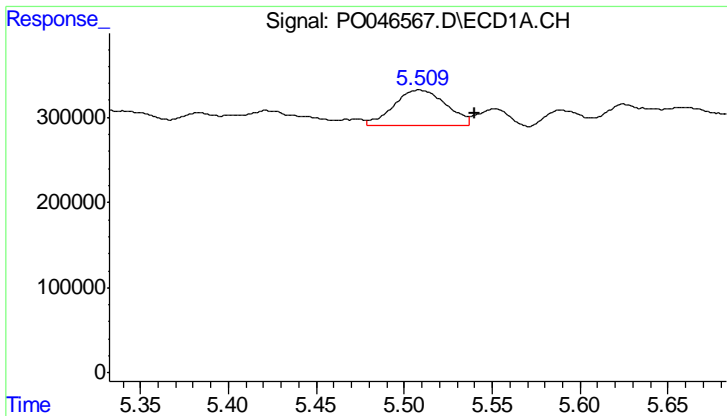
#4 AR-1016-2

R.T.: 5.508 min  
 Delta R.T.: 0.065 min  
 Response: 861227  
 Conc: 120.33 ng/ml



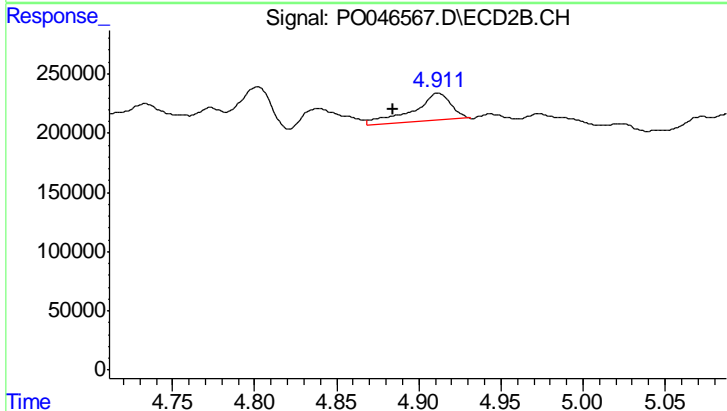
#4 AR-1016-2

R.T.: 4.839 min  
 Delta R.T.: -0.004 min  
 Response: 267608  
 Conc: 55.19 ng/ml

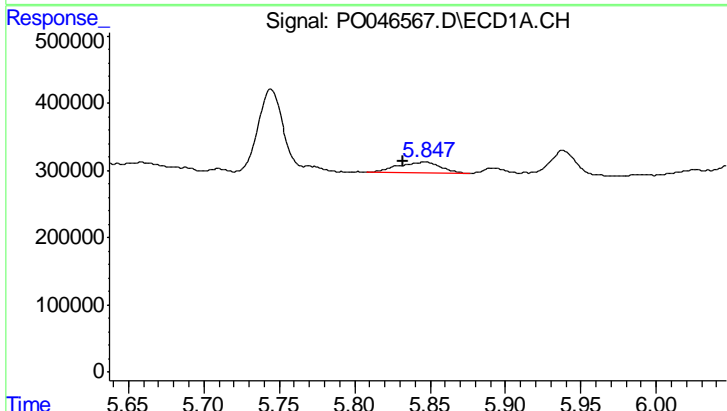


#5 AR-1016-3  
 R.T.: 5.508 min  
 Delta R.T.: -0.031 min  
 Response: 861227  
 Conc: 143.28 ng/ml

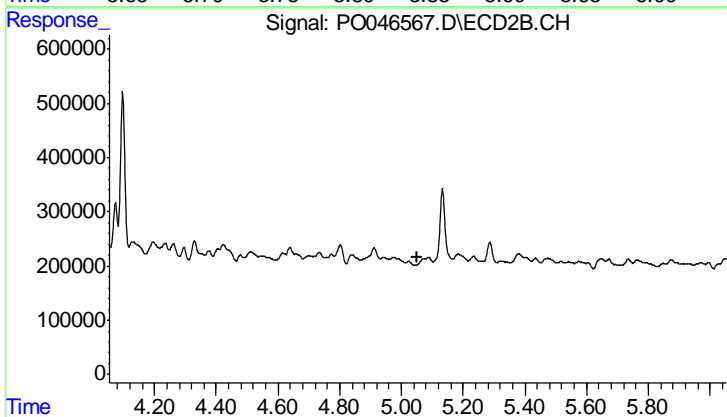
Instrument :  
 ECD\_O  
 ClientSampleId :  
 070918-DBRI-E-D-B



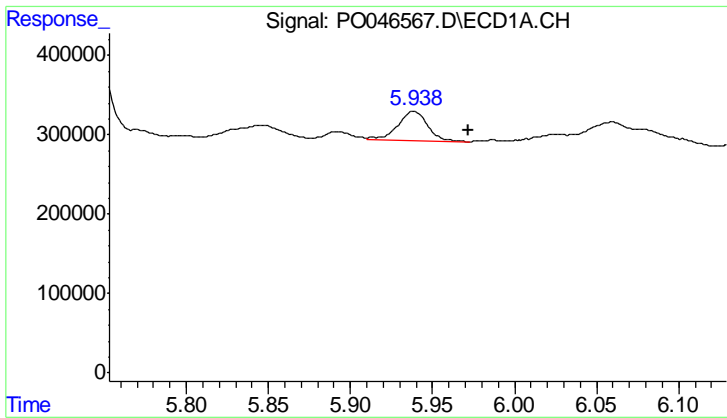
#5 AR-1016-3  
 R.T.: 4.912 min  
 Delta R.T.: 0.028 min  
 Response: 345679  
 Conc: 59.33 ng/ml



#6 AR-1016-4  
 R.T.: 5.847 min  
 Delta R.T.: 0.015 min  
 Response: 325450  
 Conc: 55.80 ng/ml



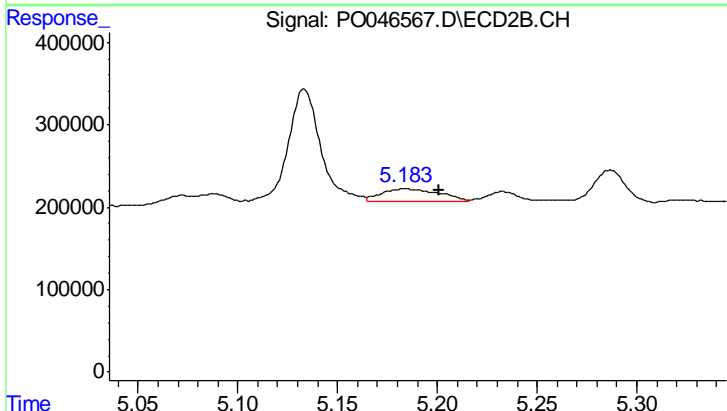
#6 AR-1016-4  
 R.T.: 5.072 min  
 Delta R.T.: 0.019 min  
 Response: -42226  
 Conc: N.D.



#7 AR-1016-5

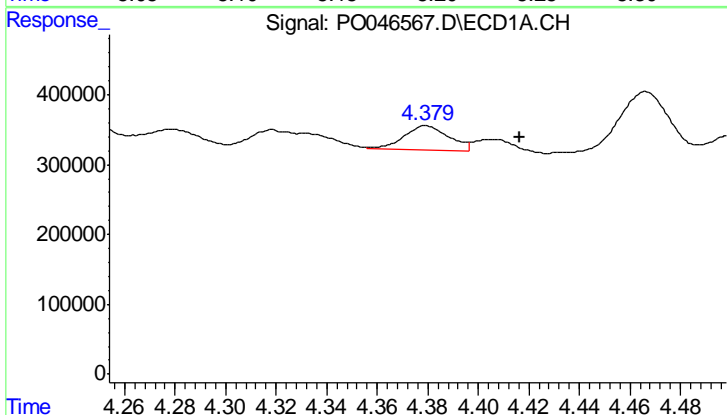
R.T.: 5.938 min  
 Delta R.T.: -0.033 min  
 Response: 481109  
 Conc: 73.97 ng/ml

Instrument :  
 ECD\_O  
 ClientSampleId :  
 070918-DBRI-E-D-B



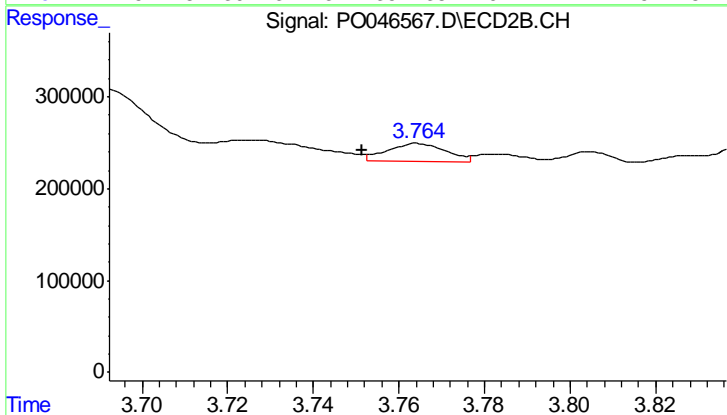
#7 AR-1016-5

R.T.: 5.184 min  
 Delta R.T.: -0.017 min  
 Response: 314796  
 Conc: 57.12 ng/ml



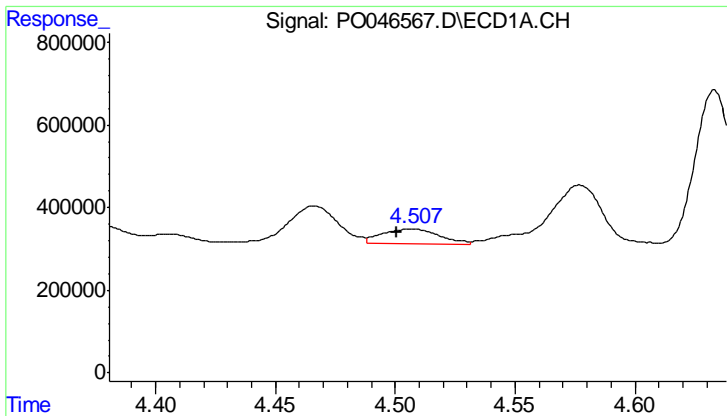
#8 AR-1221-1

R.T.: 4.379 min  
 Delta R.T.: -0.037 min  
 Response: 426215  
 Conc: 133.92 ng/ml



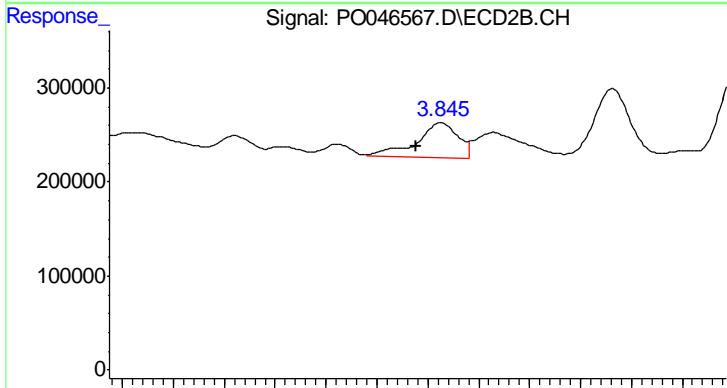
#8 AR-1221-1

R.T.: 3.764 min  
 Delta R.T.: 0.013 min  
 Response: 182694  
 Conc: 68.32 ng/ml

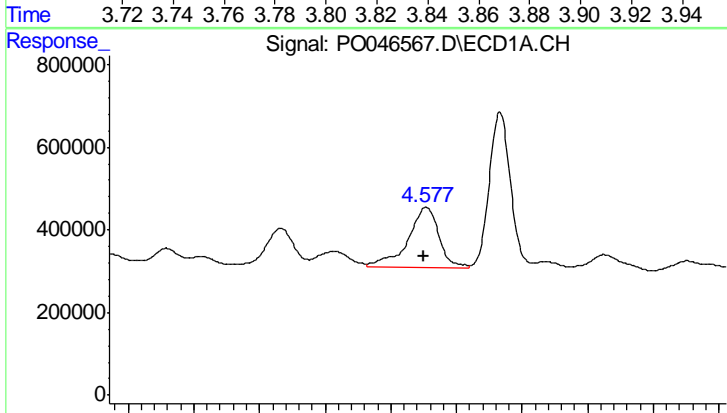


#9 AR-1221-2  
 R.T.: 4.507 min  
 Delta R.T.: 0.007 min  
 Response: 596386  
 Conc: 252.13 ng/ml

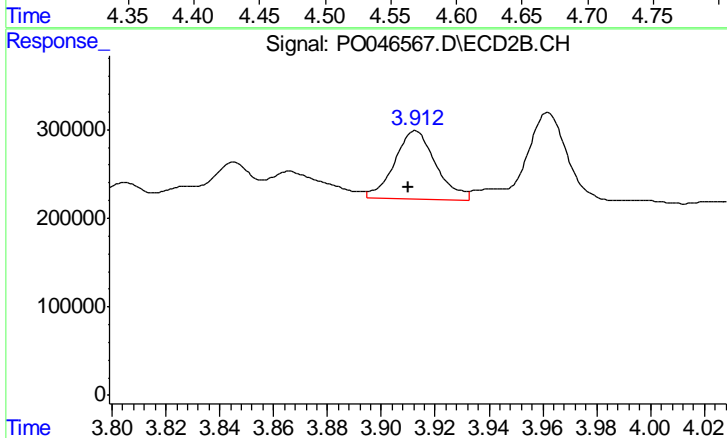
Instrument :  
 ECD\_O  
 ClientSampleId :  
 070918-DBRI-E-D-B



#9 AR-1221-2  
 R.T.: 3.845 min  
 Delta R.T.: 0.010 min  
 Response: 431107  
 Conc: 199.96 ng/ml

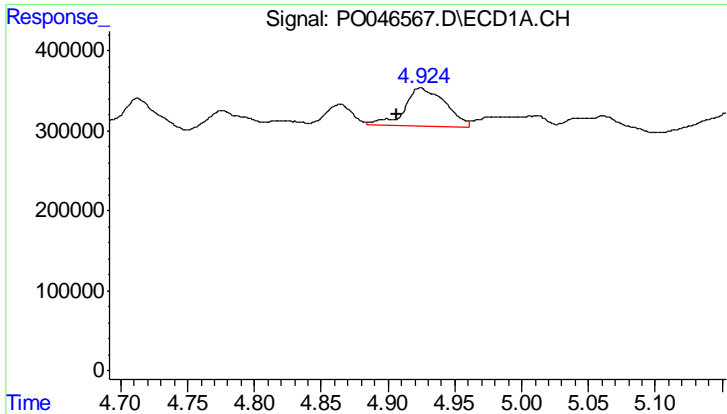


#10 AR-1221-3  
 R.T.: 4.577 min  
 Delta R.T.: 0.002 min  
 Response: 2407270  
 Conc: 318.48 ng/ml



#10 AR-1221-3  
 R.T.: 3.913 min  
 Delta R.T.: 0.003 min  
 Response: 824791  
 Conc: 120.39 ng/ml

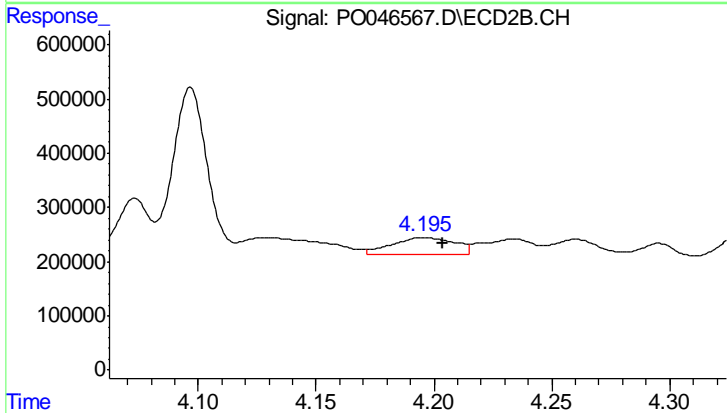




#11 AR-1232-1

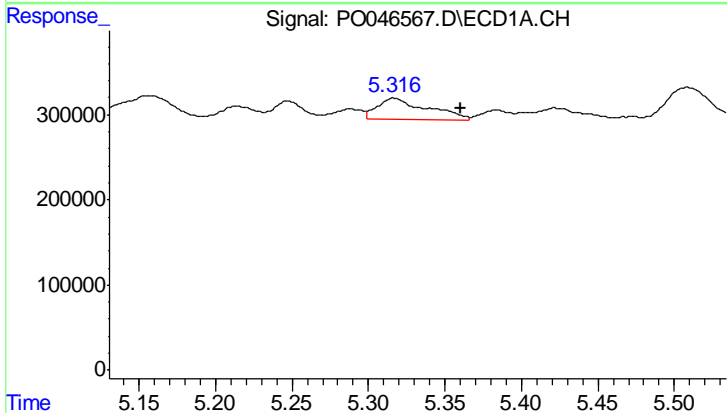
R.T.: 4.924 min  
 Delta R.T.: 0.017 min  
 Response: 1015280  
 Conc: 415.38 ng/ml

Instrument :  
 ECD\_O  
 ClientSampled :  
 070918-DBRI-E-D-B



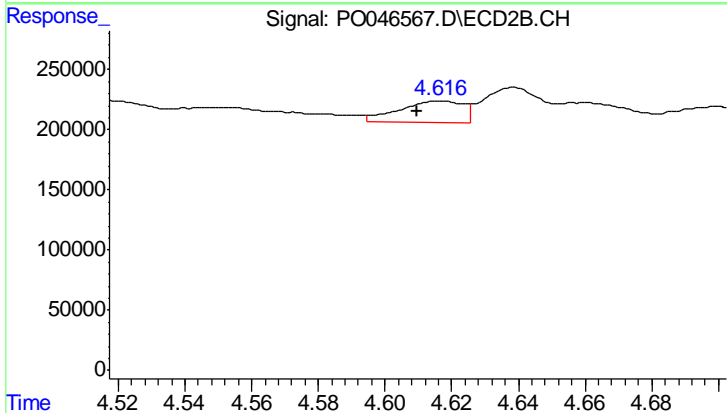
#11 AR-1232-1

R.T.: 4.196 min  
 Delta R.T.: -0.008 min  
 Response: 589493  
 Conc: 253.96 ng/ml



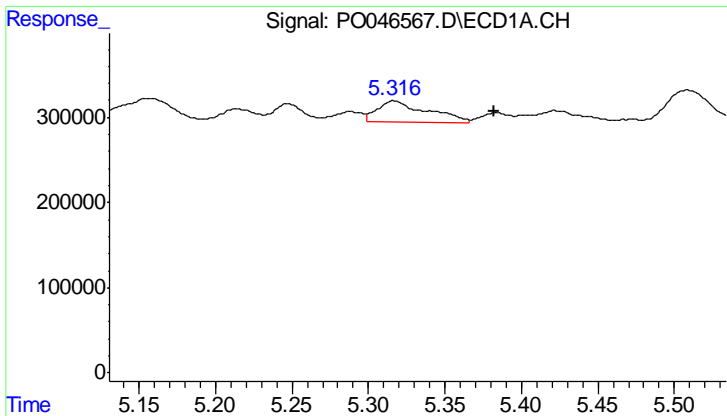
#12 AR-1232-2

R.T.: 5.316 min  
 Delta R.T.: -0.044 min  
 Response: 594663  
 Conc: 167.98 ng/ml



#12 AR-1232-2

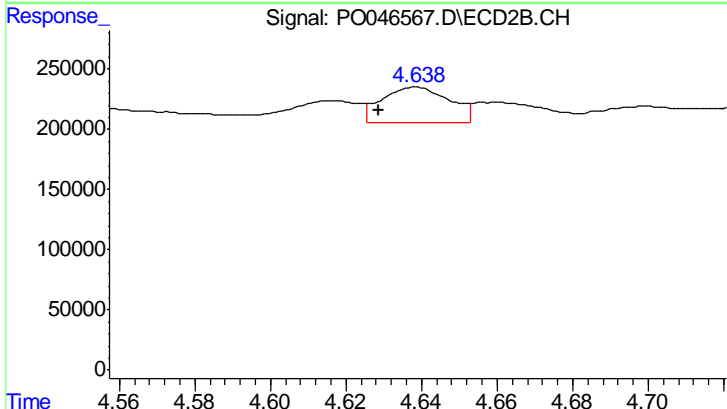
R.T.: 4.616 min  
 Delta R.T.: 0.007 min  
 Response: 236844  
 Conc: 68.75 ng/ml



#13 AR-1232-3

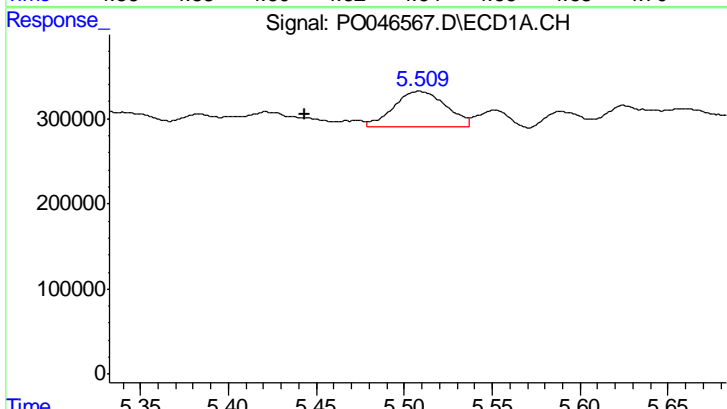
R.T.: 5.316 min  
 Delta R.T.: -0.066 min  
 Response: 594663  
 Conc: 117.16 ng/ml

Instrument :  
 ECD\_O  
 ClientSampleId :  
 070918-DBRI-E-D-B



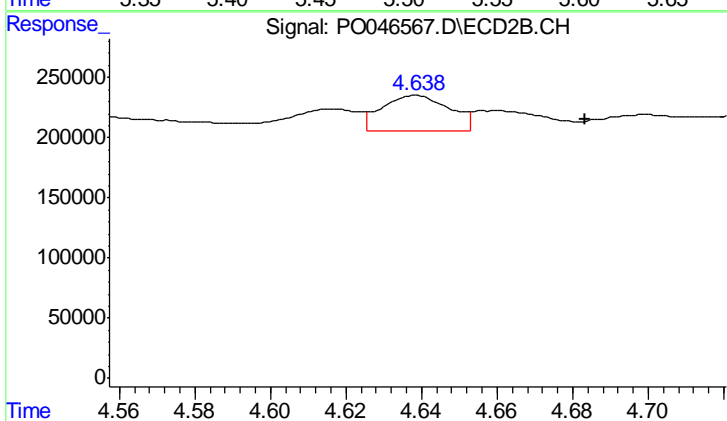
#13 AR-1232-3

R.T.: 4.639 min  
 Delta R.T.: 0.010 min  
 Response: 363266  
 Conc: 76.15 ng/ml



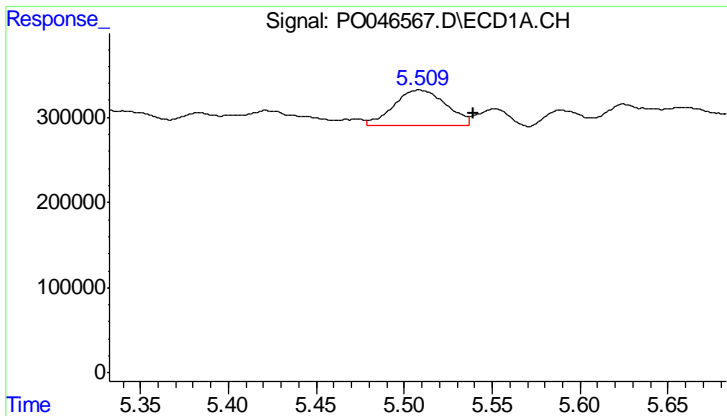
#14 AR-1232-4

R.T.: 5.508 min  
 Delta R.T.: 0.065 min  
 Response: 861227  
 Conc: 264.29 ng/ml



#14 AR-1232-4

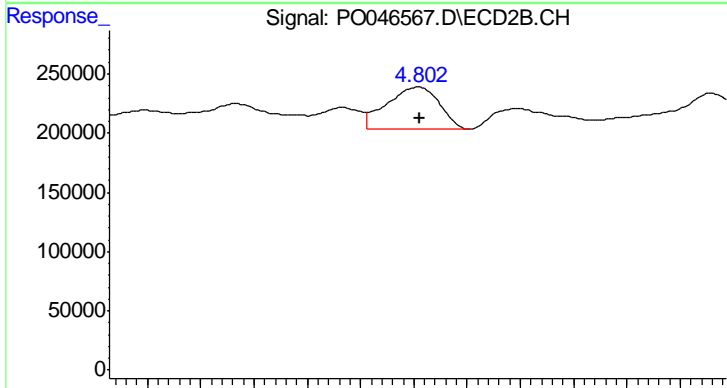
R.T.: 4.639 min  
 Delta R.T.: -0.045 min  
 Response: 363266  
 Conc: 103.37 ng/ml



#15 AR-1232-5

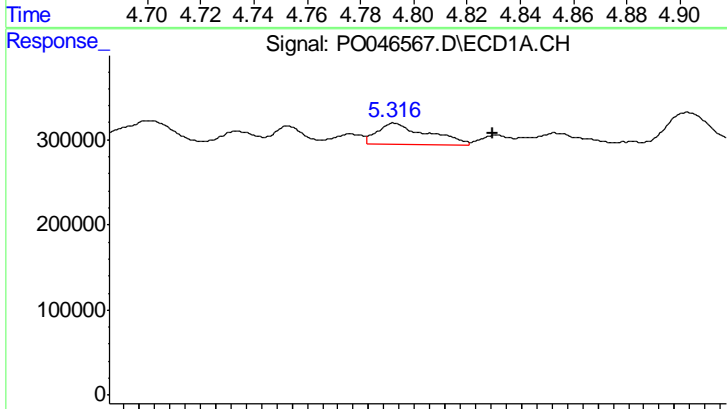
R.T.: 5.508 min  
 Delta R.T.: -0.031 min  
 Response: 861227  
 Conc: 324.35 ng/ml

Instrument :  
 ECD\_O  
 ClientSampleId :  
 070918-DBRI-E-D-B



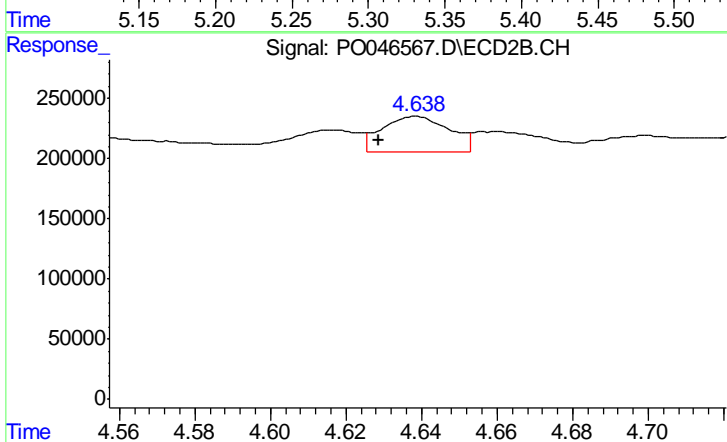
#15 AR-1232-5

R.T.: 4.802 min  
 Delta R.T.: 0.000 min  
 Response: 489045  
 Conc: 175.57 ng/ml



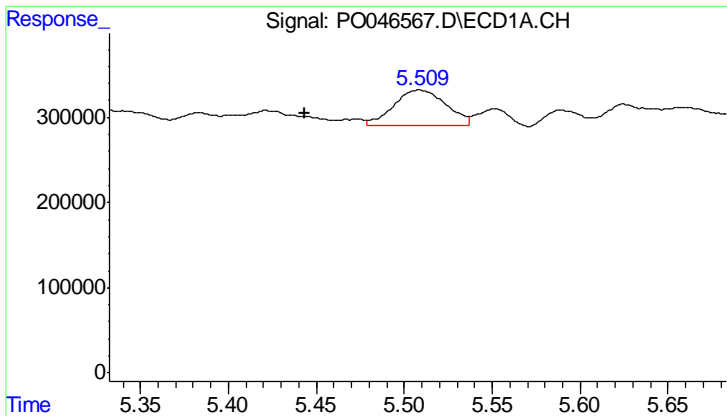
#16 AR-1242-1

R.T.: 5.316 min  
 Delta R.T.: -0.065 min  
 Response: 594663  
 Conc: 58.48 ng/ml



#16 AR-1242-1

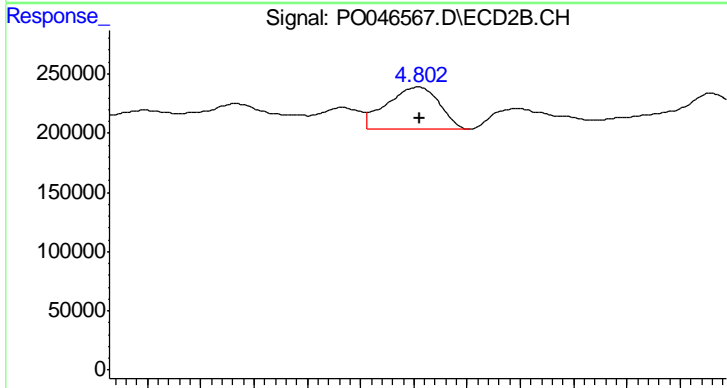
R.T.: 4.639 min  
 Delta R.T.: 0.010 min  
 Response: 363266  
 Conc: 37.92 ng/ml



#17 AR-1242-2

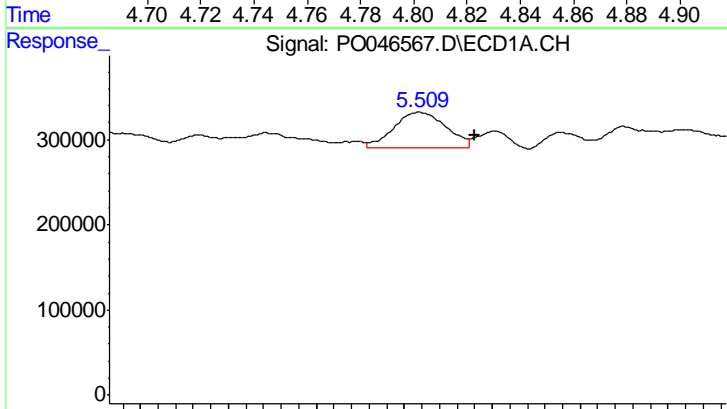
R.T.: 5.508 min  
 Delta R.T.: 0.065 min  
 Response: 861227  
 Conc: 133.03 ng/ml

Instrument :  
 ECD\_O  
 ClientSampleId :  
 070918-DBRI-E-D-B



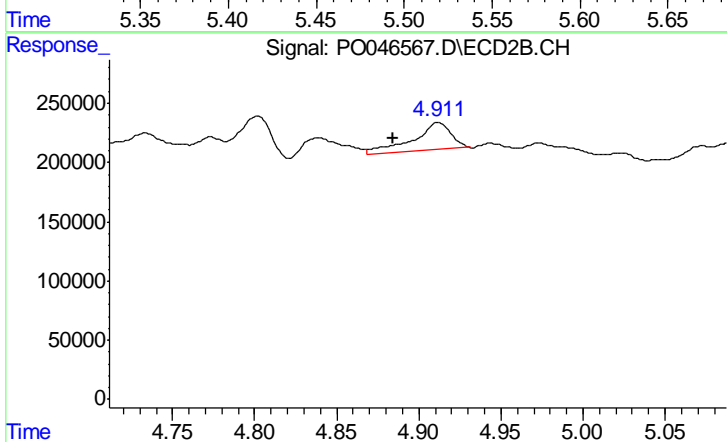
#17 AR-1242-2

R.T.: 4.802 min  
 Delta R.T.: 0.000 min  
 Response: 489045  
 Conc: 88.11 ng/ml



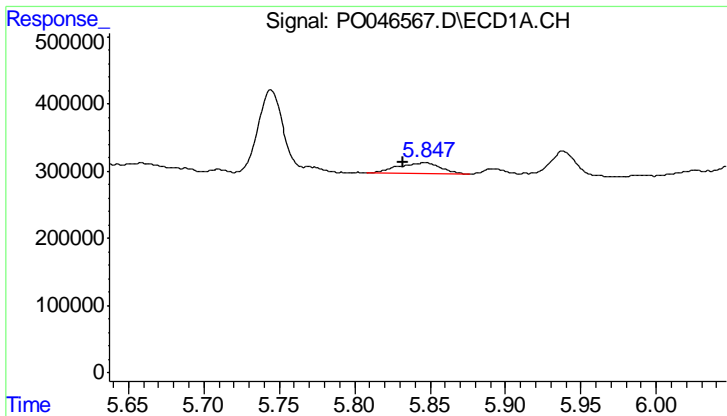
#18 AR-1242-3

R.T.: 5.508 min  
 Delta R.T.: -0.032 min  
 Response: 861227  
 Conc: 158.08 ng/ml



#18 AR-1242-3

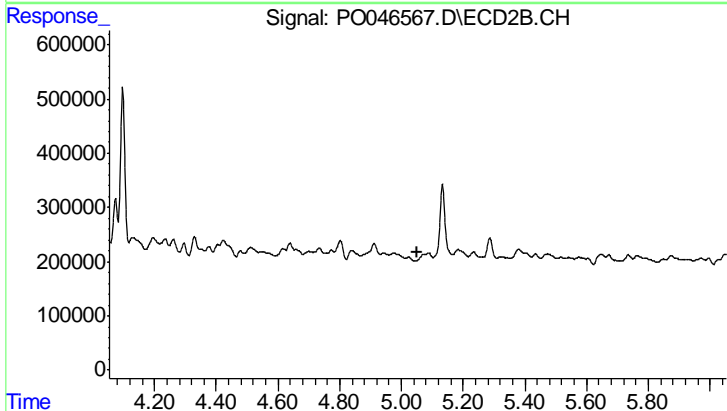
R.T.: 4.912 min  
 Delta R.T.: 0.028 min  
 Response: 345679  
 Conc: 66.57 ng/ml



#19 AR-1242-4

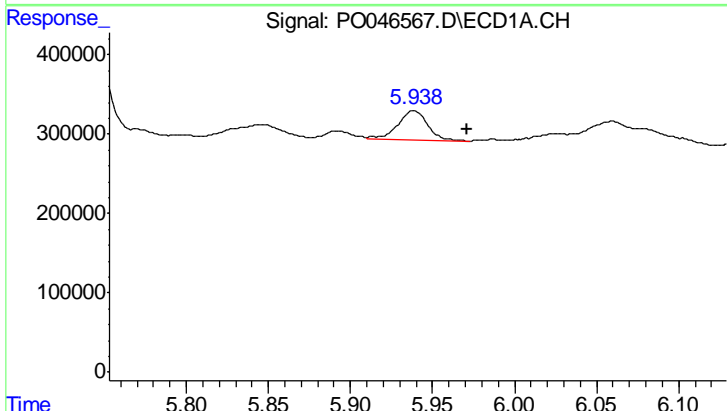
R.T.: 5.847 min  
 Delta R.T.: 0.015 min  
 Response: 325450  
 Conc: 60.92 ng/ml

Instrument :  
 ECD\_O  
 ClientSampled :  
 070918-DBRI-E-D-B



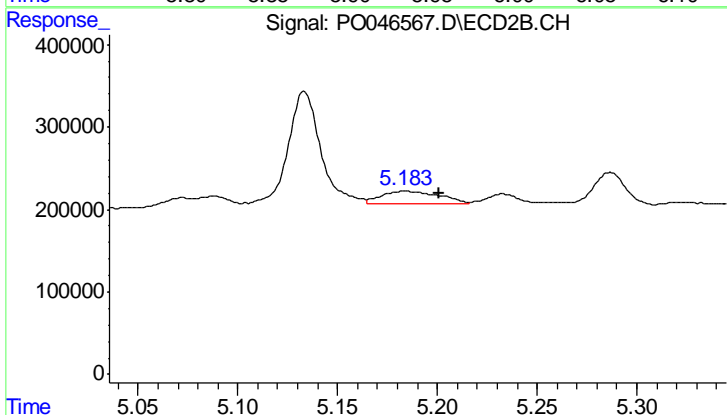
#19 AR-1242-4

R.T.: 5.072 min  
 Delta R.T.: 0.019 min  
 Response: -42226  
 Conc: N.D.



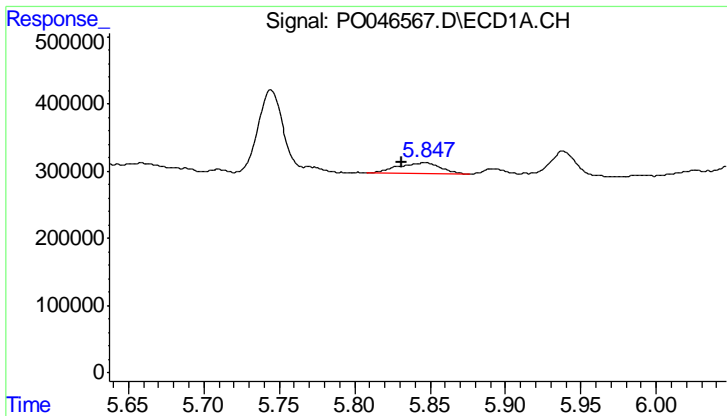
#20 AR-1242-5

R.T.: 5.938 min  
 Delta R.T.: -0.033 min  
 Response: 481109  
 Conc: 79.76 ng/ml



#20 AR-1242-5

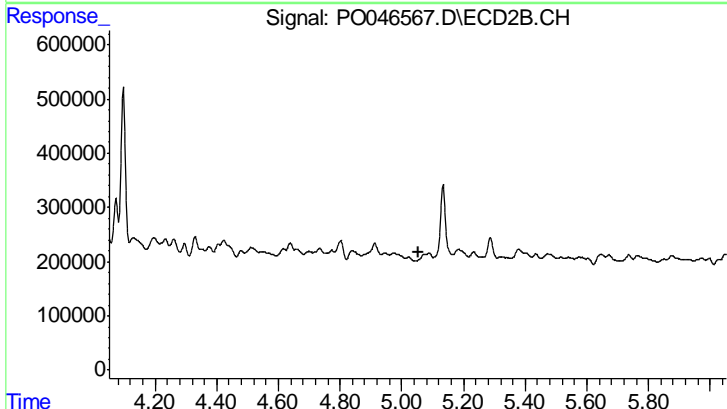
R.T.: 5.184 min  
 Delta R.T.: -0.017 min  
 Response: 314796  
 Conc: 60.77 ng/ml



#21 AR-1248-1

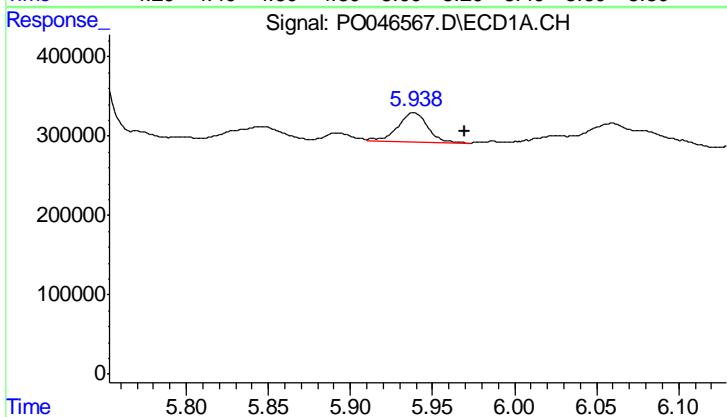
R.T.: 5.847 min  
 Delta R.T.: 0.016 min  
 Response: 325450  
 Conc: 41.02 ng/ml

Instrument :  
 ECD\_O  
 ClientSampled :  
 070918-DBRI-E-D-B



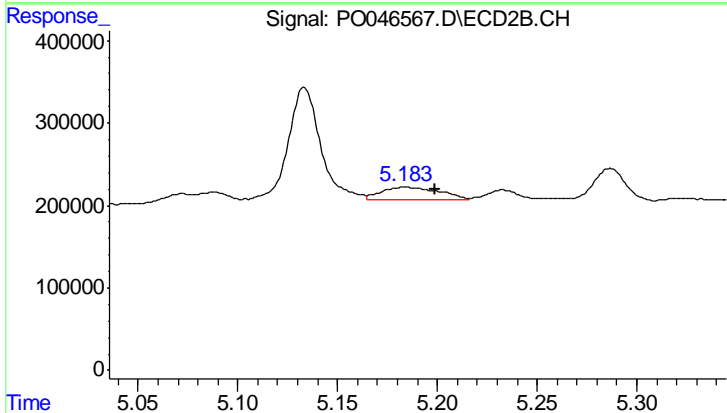
#21 AR-1248-1

R.T.: 5.072 min  
 Delta R.T.: 0.020 min  
 Response: -42226  
 Conc: N.D.



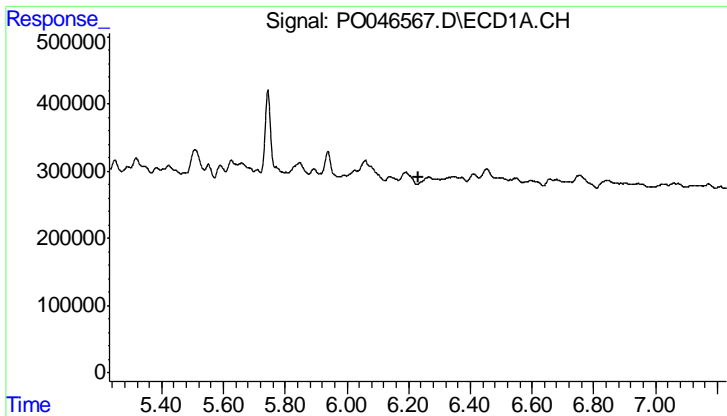
#22 AR-1248-2

R.T.: 5.938 min  
 Delta R.T.: -0.031 min  
 Response: 481109  
 Conc: 67.94 ng/ml



#22 AR-1248-2

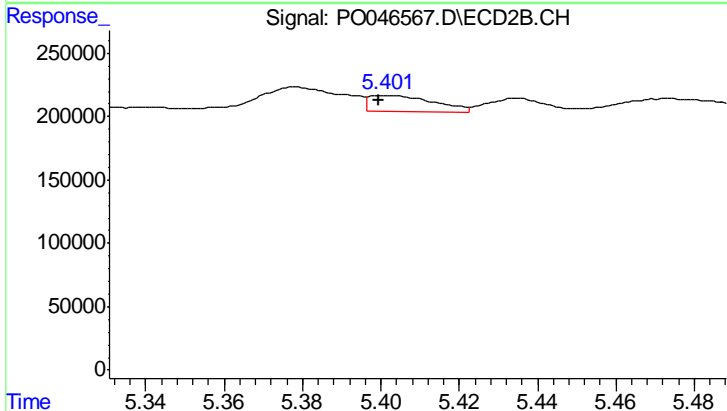
R.T.: 5.184 min  
 Delta R.T.: -0.015 min  
 Response: 314796  
 Conc: 49.32 ng/ml



#23 AR-1248-3

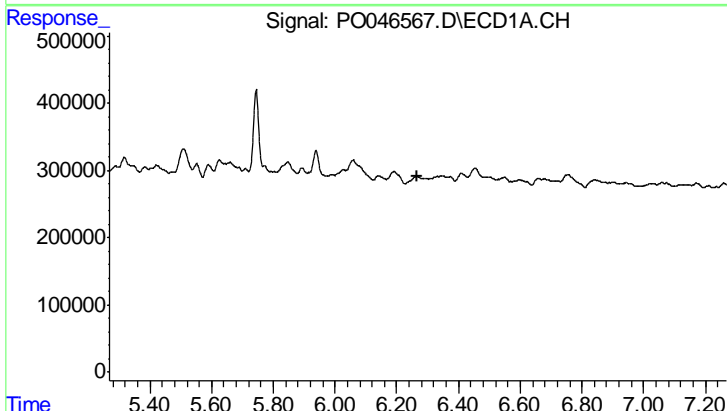
R.T.: 0.000 min  
 Exp R.T.: 6.230 min  
 Response: 0  
 Conc: N.D.

Instrument :  
 ECD\_O  
 ClientSampled :  
 070918-DBRI-E-D-B



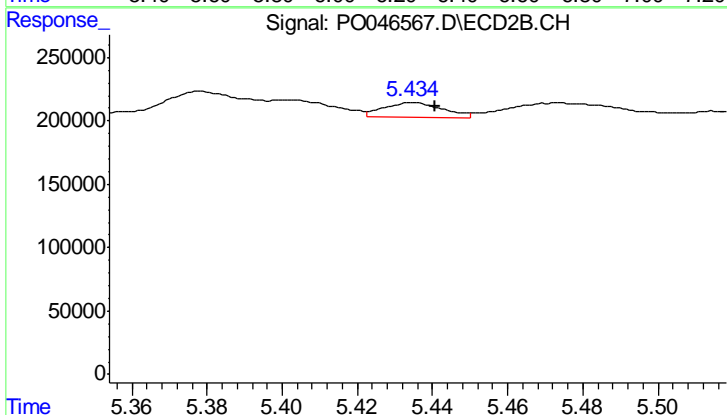
#23 AR-1248-3

R.T.: 5.402 min  
 Delta R.T.: 0.002 min  
 Response: 148730  
 Conc: 12.09 ng/ml



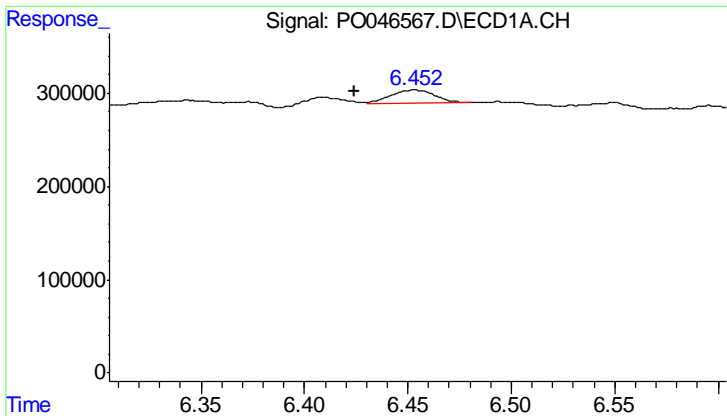
#24 AR-1248-4

R.T.: 0.000 min  
 Exp R.T.: 6.268 min  
 Response: 0  
 Conc: N.D.



#24 AR-1248-4

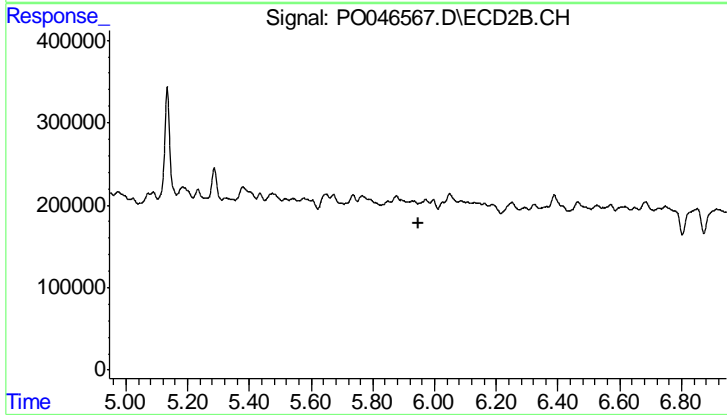
R.T.: 5.435 min  
 Delta R.T.: -0.006 min  
 Response: 127460  
 Conc: 14.64 ng/ml



#25 AR-1248-5

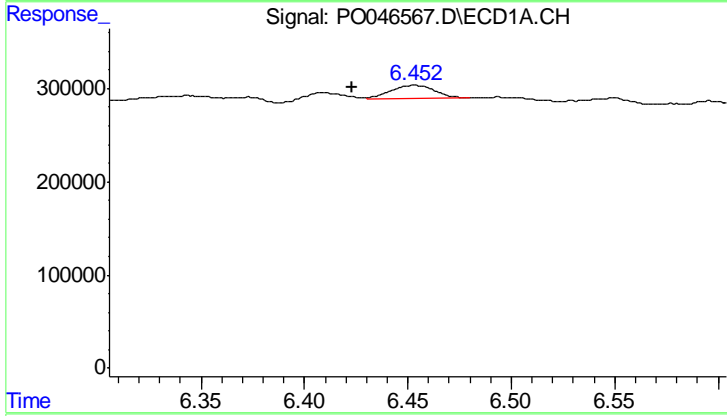
R.T.: 6.453 min  
 Delta R.T.: 0.029 min  
 Response: 203140  
 Conc: 22.32 ng/ml

Instrument :  
 ECD\_O  
 ClientSampleId :  
 070918-DBRI-E-D-B



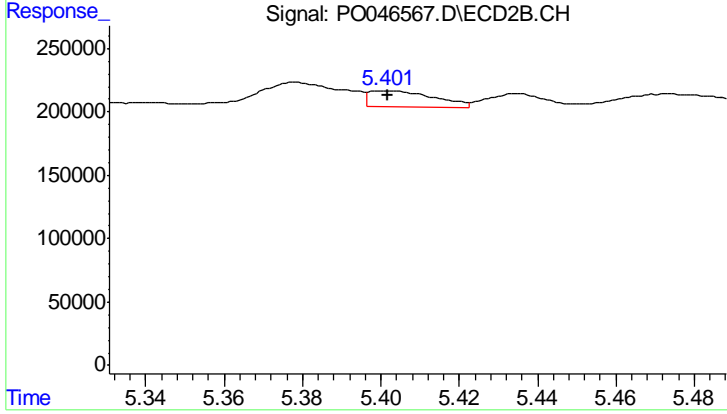
#25 AR-1248-5

R.T.: 0.000 min  
 Exp R.T.: 5.946 min  
 Response: 0  
 Conc: N.D.



#26 AR-1254-1

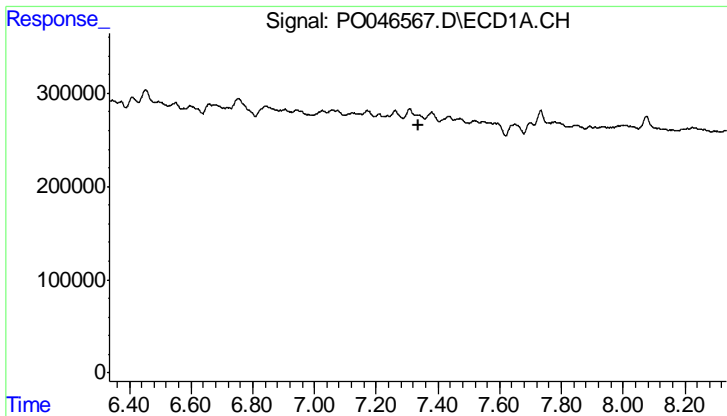
R.T.: 6.453 min  
 Delta R.T.: 0.030 min  
 Response: 203140  
 Conc: 14.57 ng/ml



#26 AR-1254-1

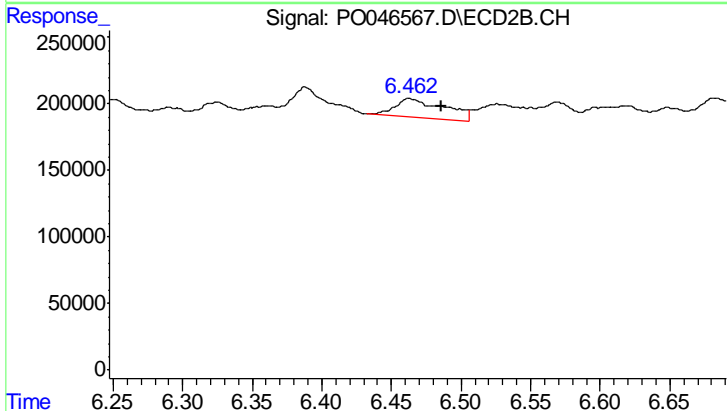
R.T.: 5.402 min  
 Delta R.T.: 0.000 min  
 Response: 148730  
 Conc: 11.12 ng/ml



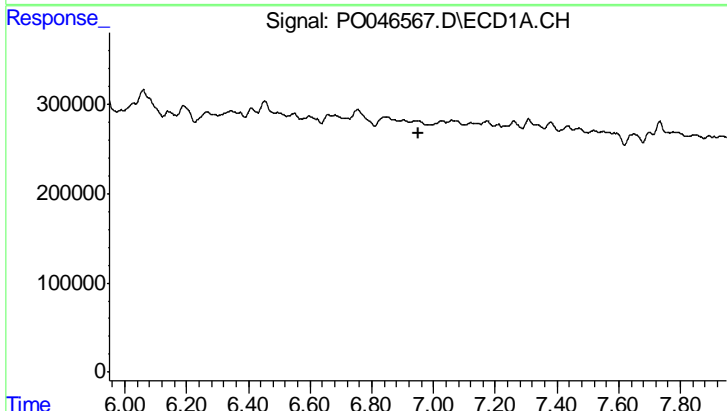


#30 AR-1254-5  
 R.T.: 0.000 min  
 Exp R.T.: 7.336 min  
 Response: 0  
 Conc: N.D.

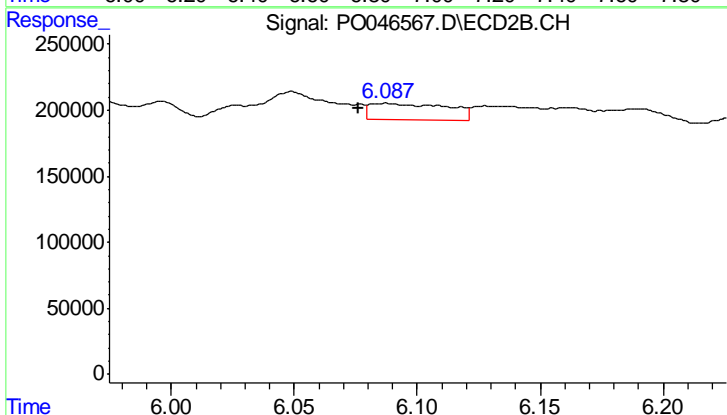
Instrument :  
 ECD\_O  
 ClientSampled :  
 070918-DBRI-E-D-B



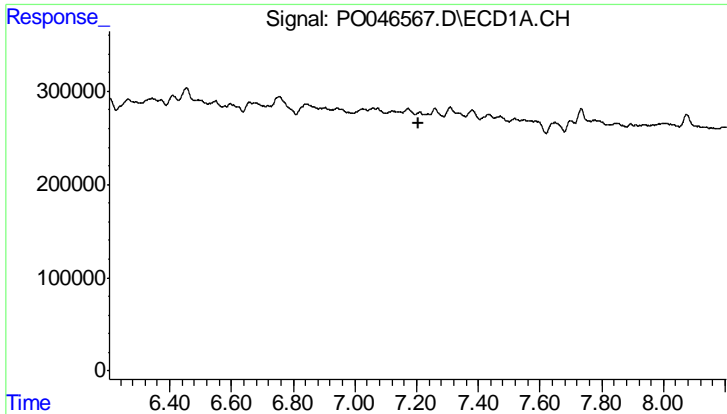
#30 AR-1254-5  
 R.T.: 6.463 min  
 Delta R.T.: -0.023 min  
 Response: 358505  
 Conc: 39.53 ng/ml



#31 AR-1260-1  
 R.T.: 0.000 min  
 Exp R.T.: 6.950 min  
 Response: 0  
 Conc: N.D.



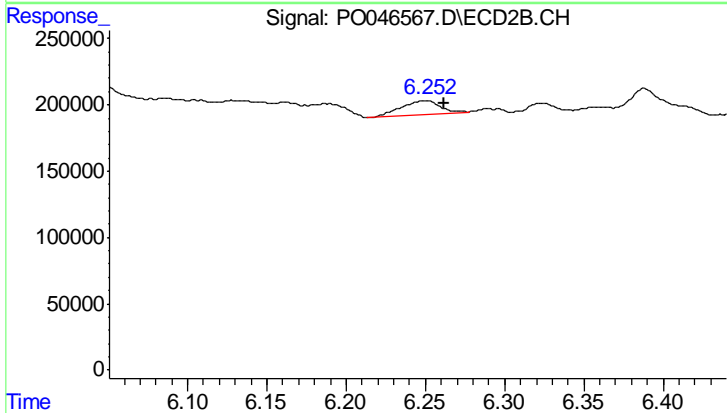
#31 AR-1260-1  
 R.T.: 6.086 min  
 Delta R.T.: 0.010 min  
 Response: 265099  
 Conc: 20.32 ng/ml



#32 AR-1260-2

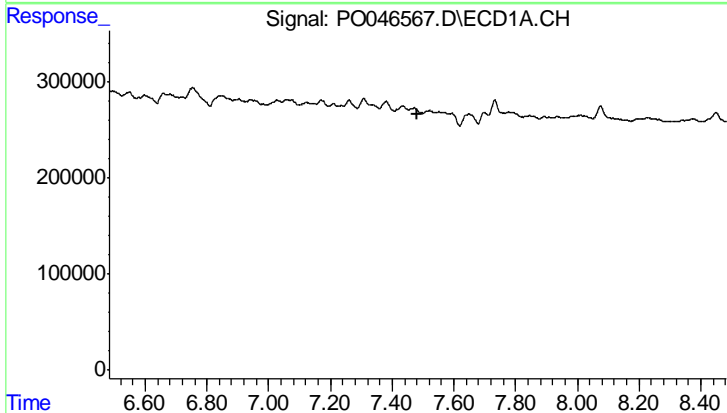
R.T.: 0.000 min  
 Exp R.T.: 7.205 min  
 Response: 0  
 Conc: N.D.

Instrument :  
 ECD\_O  
 ClientSampleId :  
 070918-DBRI-E-D-B



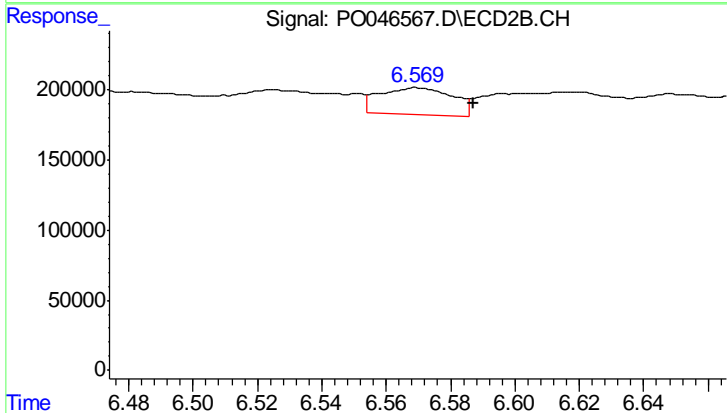
#32 AR-1260-2

R.T.: 6.251 min  
 Delta R.T.: -0.011 min  
 Response: 177712  
 Conc: 11.15 ng/ml



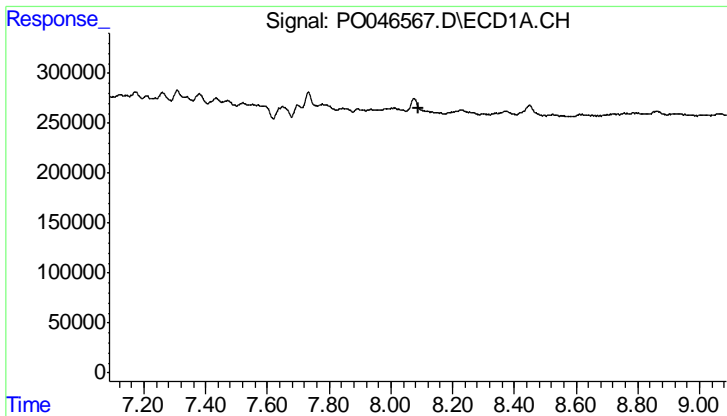
#33 AR-1260-3

R.T.: 0.000 min  
 Exp R.T.: 7.483 min  
 Response: 0  
 Conc: N.D.



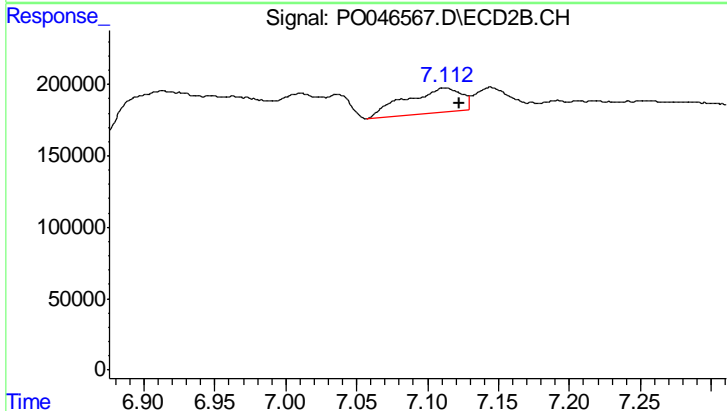
#33 AR-1260-3

R.T.: 6.569 min  
 Delta R.T.: -0.018 min  
 Response: 310029  
 Conc: 17.29 ng/ml

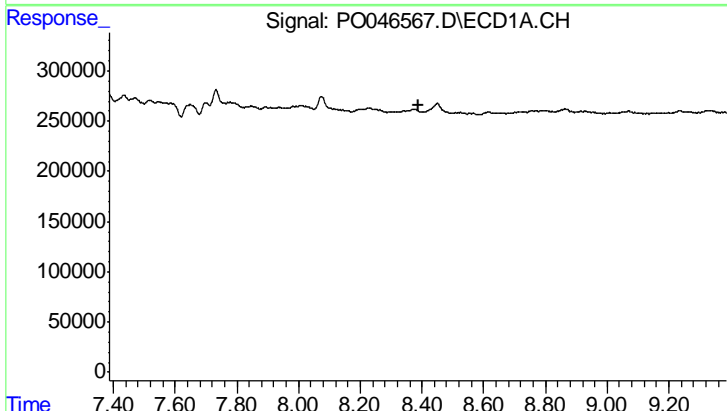


#34 AR-1260-4  
 R.T.: 0.000 min  
 Exp R.T.: 8.088 min  
 Response: 0  
 Conc: N.D.

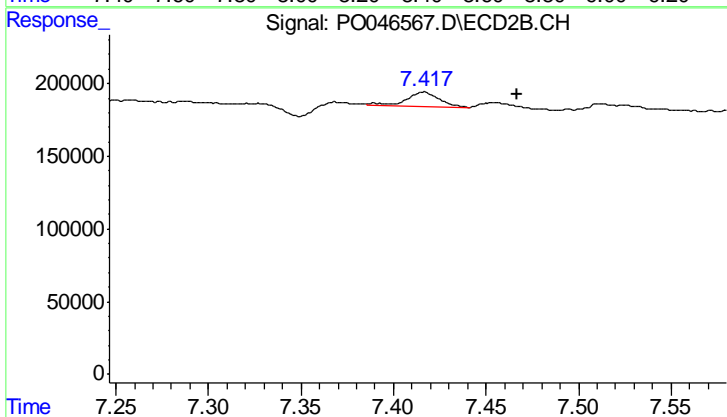
Instrument :  
 ECD\_O  
 ClientSampleId :  
 070918-DBRI-E-D-B



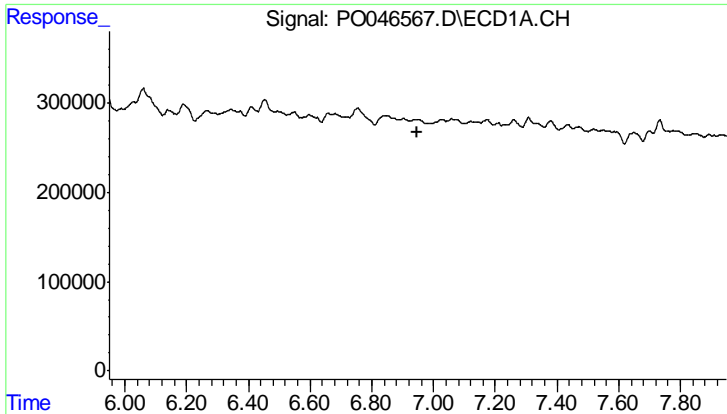
#34 AR-1260-4  
 R.T.: 7.112 min  
 Delta R.T.: -0.010 min  
 Response: 483656  
 Conc: 17.41 ng/ml



#35 AR-1260-5  
 R.T.: 0.000 min  
 Exp R.T.: 8.387 min  
 Response: 0  
 Conc: N.D.



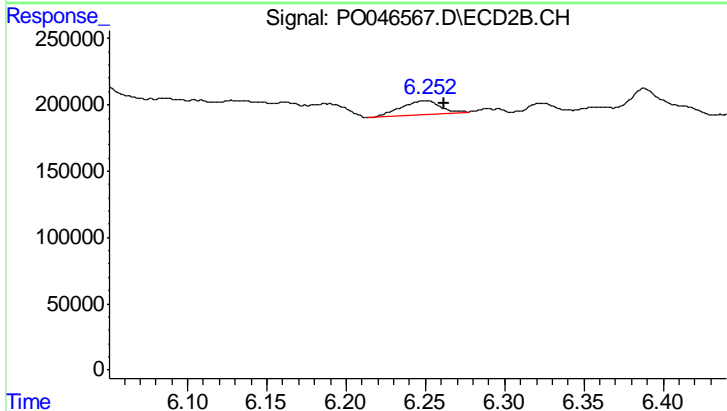
#35 AR-1260-5  
 R.T.: 7.416 min  
 Delta R.T.: -0.050 min  
 Response: 126429  
 Conc: 6.58 ng/ml



#36 AR-1262-1

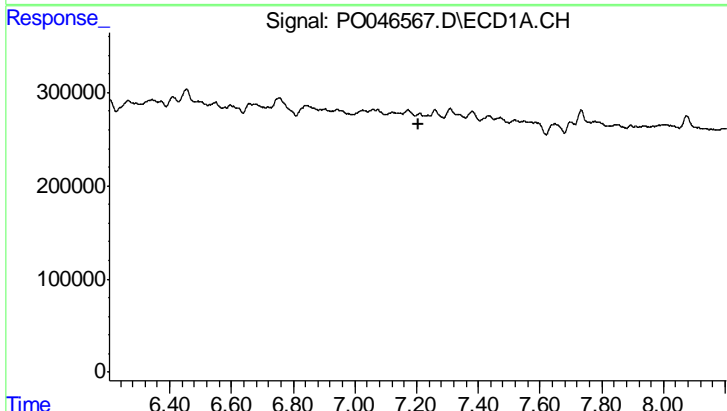
R.T.: 0.000 min  
 Exp R.T.: 6.949 min  
 Response: 0  
 Conc: N.D.

Instrument :  
 ECD\_O  
 ClientSampled :  
 070918-DBRI-E-D-B



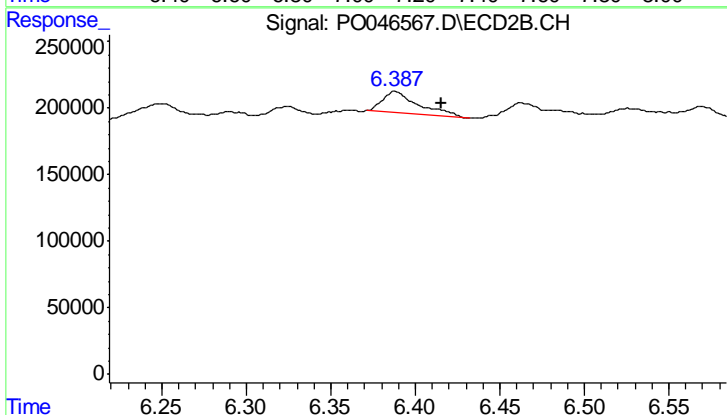
#36 AR-1262-1

R.T.: 6.251 min  
 Delta R.T.: -0.011 min  
 Response: 177712  
 Conc: 13.57 ng/ml



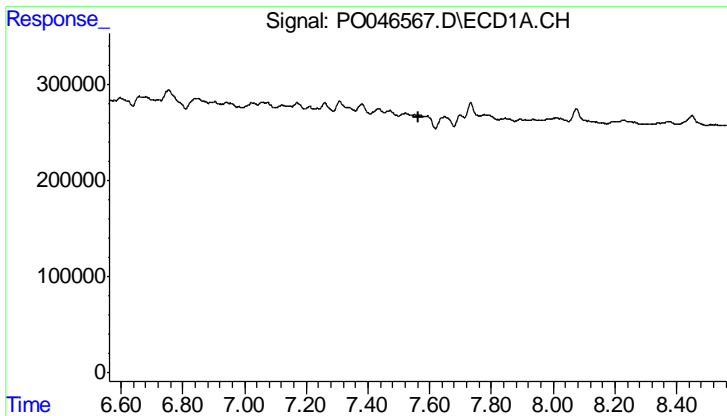
#37 AR-1262-2

R.T.: 0.000 min  
 Exp R.T.: 7.205 min  
 Response: 0  
 Conc: N.D.



#37 AR-1262-2

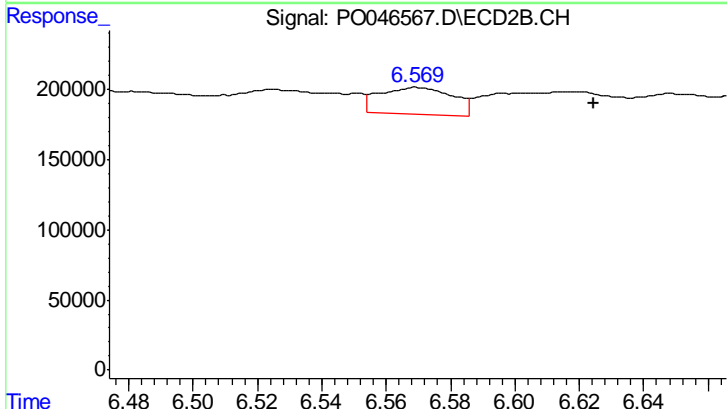
R.T.: 6.388 min  
 Delta R.T.: -0.027 min  
 Response: 238028  
 Conc: 18.37 ng/ml



#38 AR-1262-3

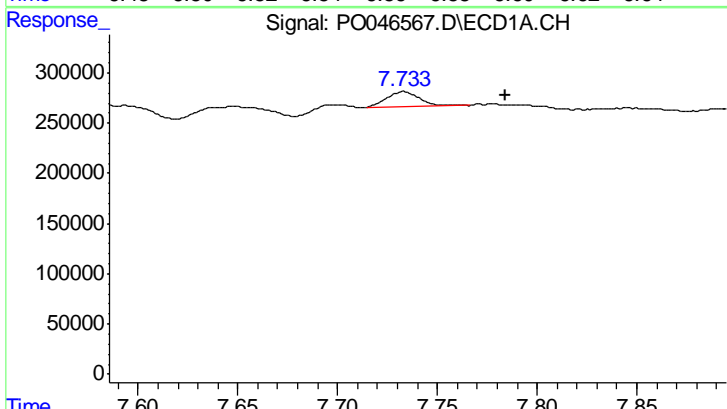
R.T.: 0.000 min  
 Exp R.T.: 7.562 min  
 Response: 0  
 Conc: N.D.

Instrument :  
 ECD\_O  
 ClientSampleId :  
 070918-DBRI-E-D-B



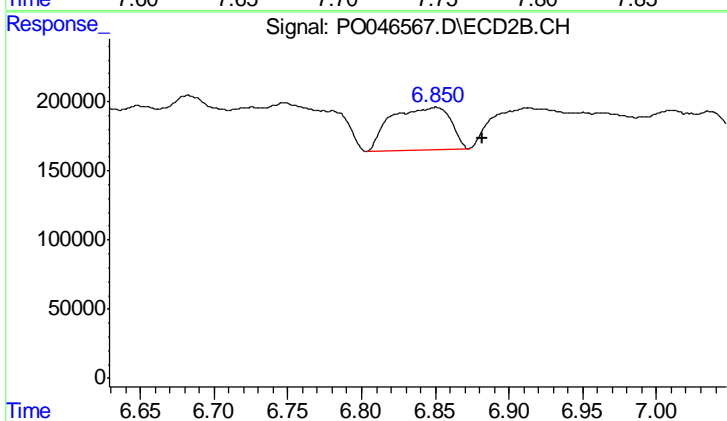
#38 AR-1262-3

R.T.: 6.569 min  
 Delta R.T.: -0.055 min  
 Response: 310029  
 Conc: 17.70 ng/ml



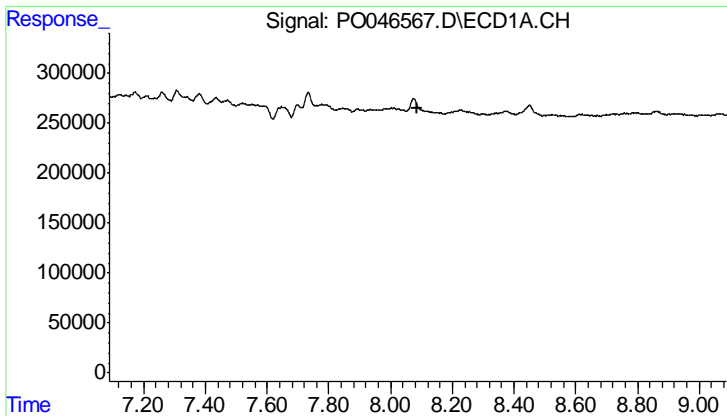
#39 AR-1262-4

R.T.: 7.733 min  
 Delta R.T.: -0.051 min  
 Response: 174158  
 Conc: 12.95 ng/ml



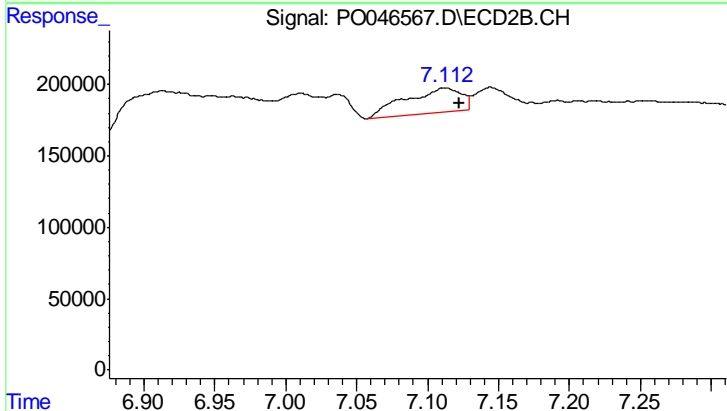
#39 AR-1262-4

R.T.: 6.851 min  
 Delta R.T.: -0.031 min  
 Response: 860195  
 Conc: 56.27 ng/ml

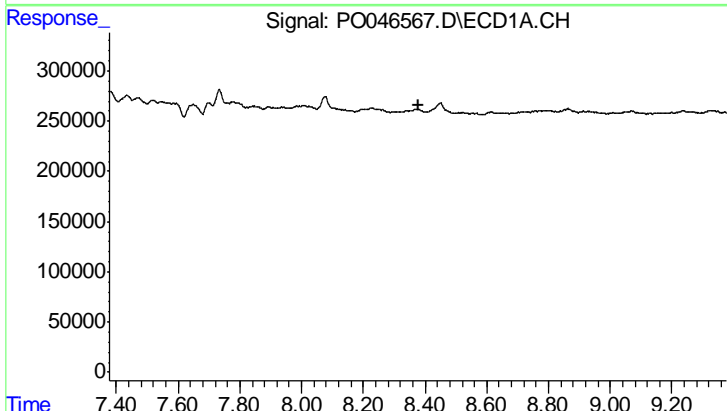


#40 AR-1262-5  
 R.T.: 0.000 min  
 Exp R.T.: 8.088 min  
 Response: 0  
 Conc: N.D.

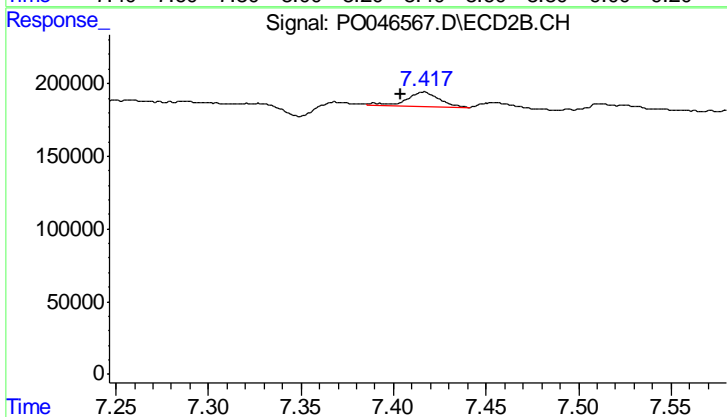
Instrument :  
 ECD\_O  
 ClientSampleId :  
 070918-DBRI-E-D-B



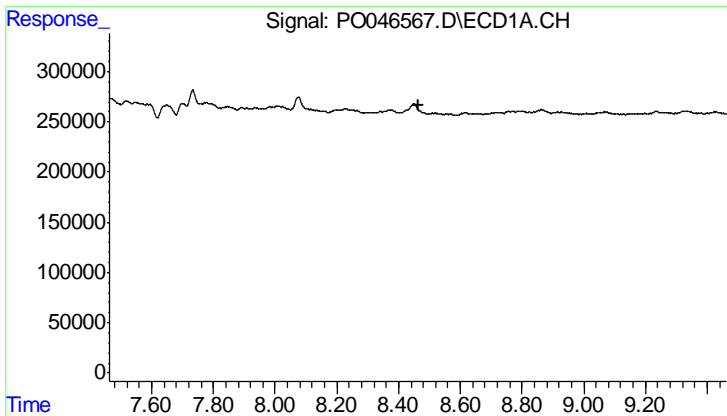
#40 AR-1262-5  
 R.T.: 7.112 min  
 Delta R.T.: -0.010 min  
 Response: 483656  
 Conc: 15.67 ng/ml



#41 AR-1268-1  
 R.T.: 0.000 min  
 Exp R.T.: 8.377 min  
 Response: 0  
 Conc: N.D.



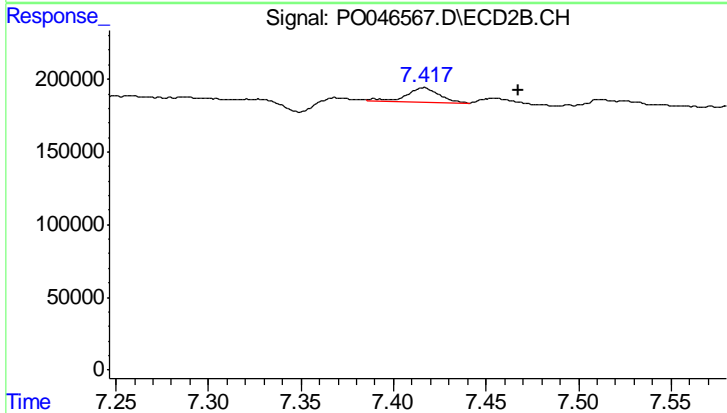
#41 AR-1268-1  
 R.T.: 7.416 min  
 Delta R.T.: 0.013 min  
 Response: 126429  
 Conc: 4.52 ng/ml



#42 AR-1268-2

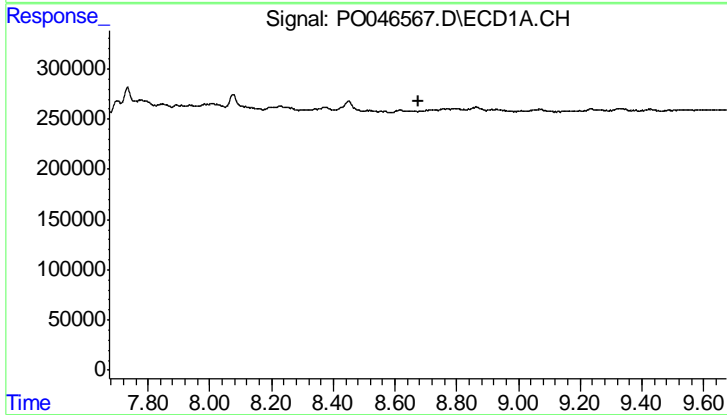
R.T.: 0.000 min  
 Exp R.T.: 8.463 min  
 Response: 0  
 Conc: N.D.

Instrument :  
 ECD\_O  
 ClientSampleId :  
 070918-DBRI-E-D-B



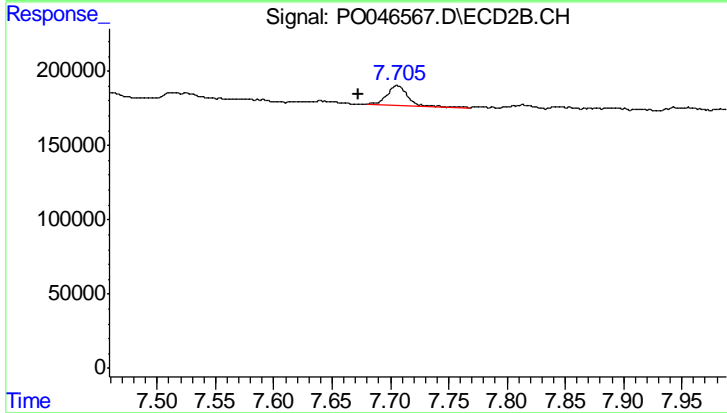
#42 AR-1268-2

R.T.: 7.416 min  
 Delta R.T.: -0.051 min  
 Response: 126429  
 Conc: 4.59 ng/ml



#43 AR-1268-3

R.T.: 0.000 min  
 Exp R.T.: 8.675 min  
 Response: 0  
 Conc: N.D.



#43 AR-1268-3

R.T.: 7.706 min  
 Delta R.T.: 0.034 min  
 Response: 171920  
 Conc: 7.70 ng/ml