

Data Path : Z:\pestpcbsrv\HPCHEM1\ECD O\Data\PO071118\  
 Data File : PO046577.D  
 Signal(s) : Signal #1: ECD1A.CH Signal #2: ECD2B.CH  
 Acq On : 11 Jul 2018 20:43  
 Operator : SM/SJ  
 Sample : PB110995BL  
 Misc :  
 ALS Vial : 13 Sample Multiplier: 1

Instrument :  
 ECD\_O  
 ClientSampled :  
 PB110995BL

Manual Integrations  
 APPROVED

Sohil  
 7/12/2018 7:06:16 PM

Integration File signal 1: autoint1.e  
 Integration File signal 2: autoint2.e  
 Quant Time: Jul 12 05:20:24 2018  
 Quant Method : Z:\pestpcbsrv\HPCHEM1\ECD\_O\methods\PO070718.M  
 Quant Title : GC EXTRACTABLES  
 QLast Update : Mon Jul 09 15:27:34 2018  
 Response via : Initial Calibration  
 Integrator: ChemStation 6890 Scale Mode: Small noise peaks clipped

Volume Inj. : 2 µl  
 Signal #1 Phase : ZB-MR1 Signal #2 Phase: ZB-MR2  
 Signal #1 Info : 30Mx0.32mmx 0.50µ Signal #2 Info : 30M x 0.32mm x 0.25µm

Compound	RT#1	RT#2	Resp#1	Resp#2	ng/ml	ng/ml
----------	------	------	--------	--------	-------	-------

-----  
 System Monitoring Compounds

1) SA Tetrachlo...	4.204	3.529	4165487	4043170	17.430	19.035
2) SA Decachlor...	9.729	8.459	3242837	3223117	17.013m	16.616

Target Compounds  
 -----

(f)=RT Delta > 1/2 Window (#)=Amounts differ by > 25% (m)=manual int.

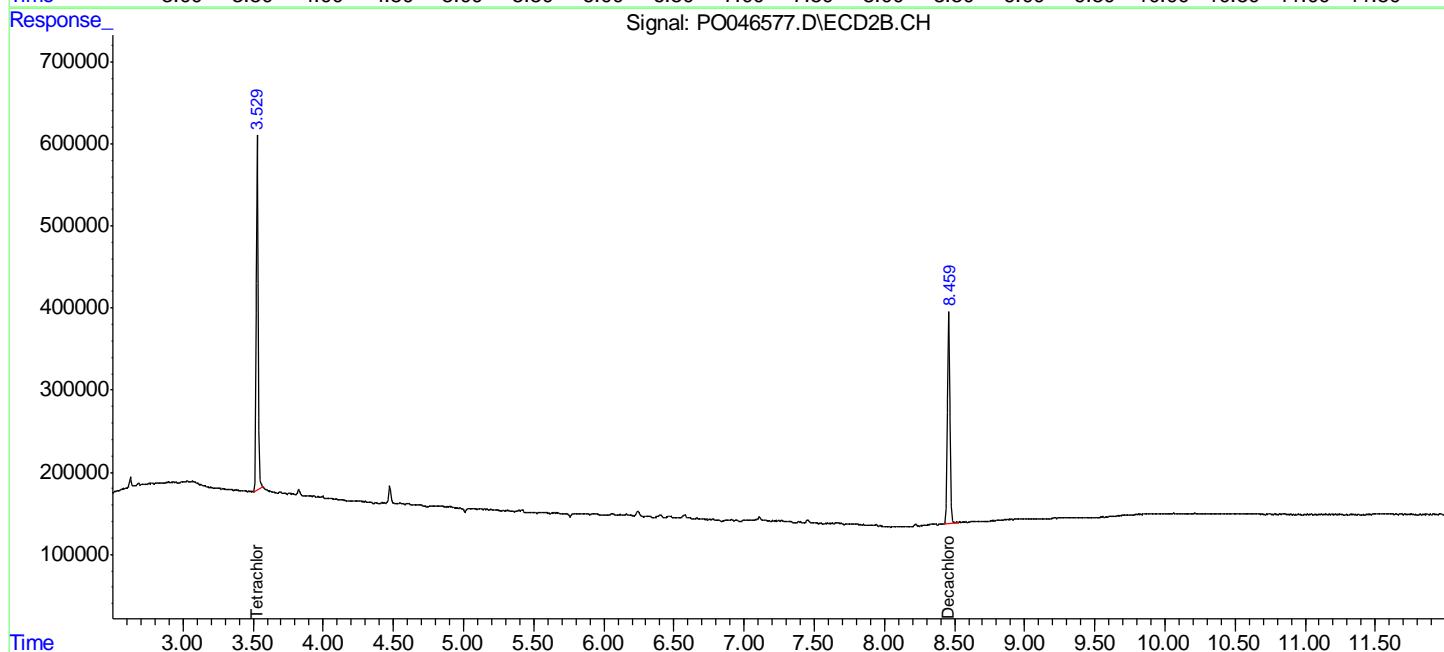
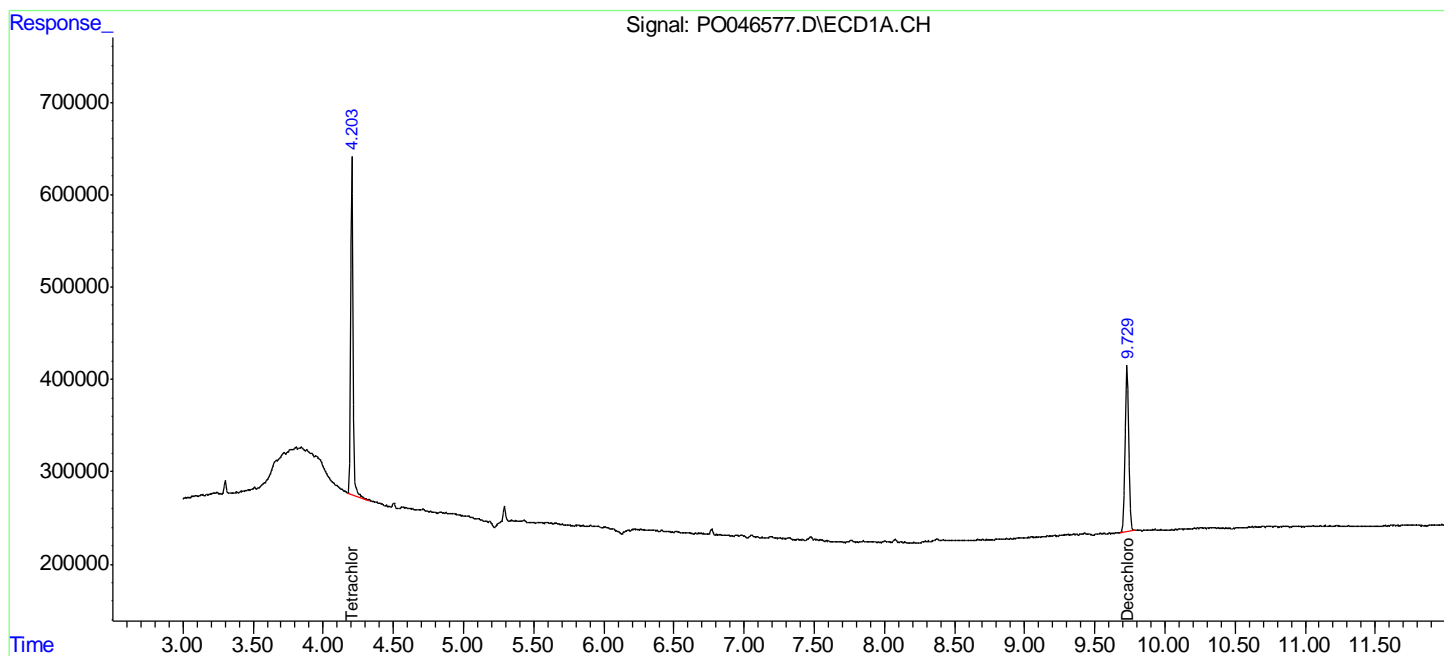
Data Path : Z:\pestpcbsrv\HPCHEM1\ECD O\Data\PO071118\  
 Data File : PO046577.D  
 Signal(s) : Signal #1: ECD1A.CH Signal #2: ECD2B.CH  
 Acq On : 11 Jul 2018 20:43  
 Operator : SM/SJ  
 Sample : PB110995BL  
 Misc :  
 ALS Vial : 13 Sample Multiplier: 1

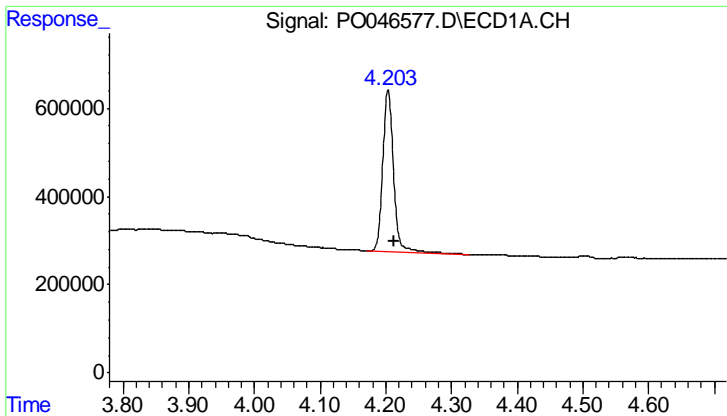
**Instrument :**  
 ECD\_O  
**Client Sampled :**  
 PB110995BL

**Manual Integrations**  
**APPROVED**  
 Sohil  
 7/12/2018 7:06:16 PM

Integration File signal 1: autoint1.e  
 Integration File signal 2: autoint2.e  
 Quant Time: Jul 12 05:20:24 2018  
 Quant Method : Z:\pestpcbsrv\HPCHEM1\ECD\_O\methods\PO070718.M  
 Quant Title : GC EXTRACTABLES  
 QLast Update : Mon Jul 09 15:27:34 2018  
 Response via : Initial Calibration  
 Integrator: ChemStation 6890 Scale Mode: Small noise peaks clipped

Volume Inj. : 2 µl  
 Signal #1 Phase : ZB-MR1 Signal #2 Phase: ZB-MR2  
 Signal #1 Info : 30Mx0.32mmx 0.50µ Signal #2 Info : 30M x 0.32mm x 0.25µm



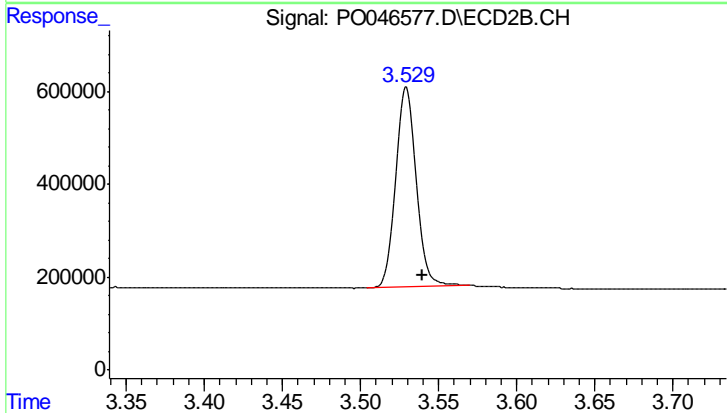


#1 Tetrachloro-m-xylene

R.T.: 4.204 min  
 Delta R.T.: -0.009 min  
 Response: 4165487  
 Conc: 17.43 ng/ml

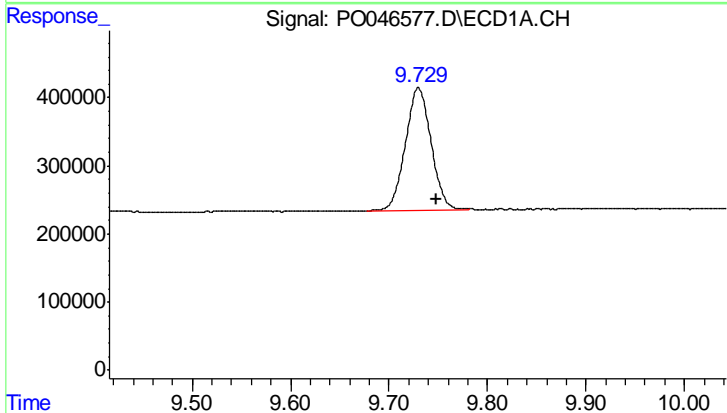
**Instrument :**  
 ECD\_O  
**ClientSampled :**  
 PB110995BL

**Manual Integrations**  
**APPROVED**  
 Sohil  
 7/12/2018 7:06:16 PM



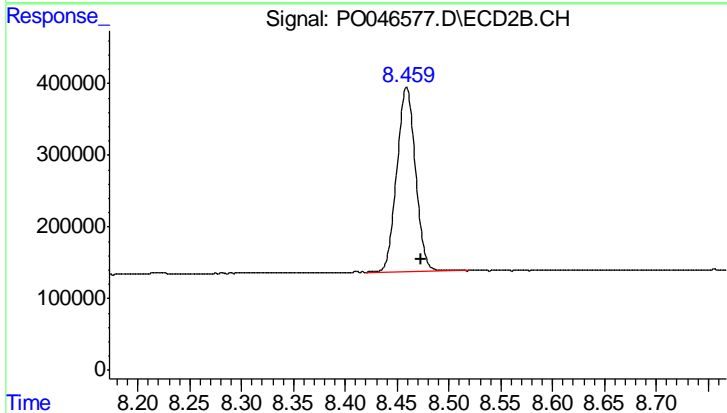
#1 Tetrachloro-m-xylene

R.T.: 3.529 min  
 Delta R.T.: -0.010 min  
 Response: 4043170  
 Conc: 19.04 ng/ml



#2 Decachlorobiphenyl

R.T.: 9.729 min  
 Delta R.T.: -0.019 min  
 Response: 3242837  
 Conc: 17.01 ng/ml m



#2 Decachlorobiphenyl

R.T.: 8.459 min  
 Delta R.T.: -0.014 min  
 Response: 3223117  
 Conc: 16.62 ng/ml