

Data Path : Z:\pestpcbsrv\HPCHEM1\ECD\_0\Data\P0071122\  
 Data File : P0087925.D  
 Signal(s) : Signal #1: ECD1A.ch Signal #2: ECD2B.ch  
 Acq On : 11 Jul 2022 22:40  
 Operator : YP/AJ  
 Sample : N3650-13MSD  
 Misc :  
 ALS Vial : 20 Sample Multiplier: 1

**Instrument :**  
 ECD\_0  
**ClientSampleId :**  
 S5-05-SMSD

**Manual Integrations**  
**APPROVED**  
 Reviewed By :Yogesh Patel 07/12/2022  
 Supervised By :Ankita Jodhani 07/12/2022

Integration File signal 1: autoint1.e  
 Integration File signal 2: autoint2.e  
 Quant Time: Jul 12 03:15:11 2022  
 Quant Method : Z:\pestpcbsrv\HPCHEM1\ECD\_0\methods\P0062722.M  
 Quant Title : GC EXTRACTABLES  
 QLast Update : Tue Jun 28 02:46:21 2022  
 Response via : Initial Calibration  
 Integrator: ChemStation

Volume Inj. : 2 µl  
 Signal #1 Phase : ZB-MR1 Signal #2 Phase: ZB-MR2  
 Signal #1 Info : 30Mx0.32mmx 0.50µ Signal #2 Info : 30M x 0.32mm x 0.25µm

Compound	RT#1	RT#2	Resp#1	Resp#2	ng/ml	ng/ml
-----						
System Monitoring Compounds						
1) SA Tetrachlo...	4.446	3.606	48916614	16983235	18.899	17.260
2) SA Decachlor...	10.295	8.609	37432409	16825024	18.325	20.755
Target Compounds						
3) L1 AR-1016-1	5.622	4.686	35998992	16139792	401.086	403.590
4) L1 AR-1016-2	5.645	4.704	50973933	22289520	405.588	399.806
5) L1 AR-1016-3	5.708	4.880	31589778	12071153	405.881	410.022
6) L1 AR-1016-4	5.807	4.922	25022634	15244125	409.373	634.353 #
7) L1 AR-1016-5	6.104	5.135	28813457	13483628	480.776	440.814
26) L6 AR-1254-1	6.484	5.487	80964753	42412325	807.724	767.237
27) L6 AR-1254-2	6.703	5.635	148.3E6	59797680	971.634	1222.323 #
28) L6 AR-1254-3	7.073	6.038	214.6E6	108.6E6	1408.977	1431.477m
29) L6 AR-1254-4	7.359	6.267	153.3E6	69378358	1393.015	1528.178
30) L6 AR-1254-5	7.800	6.684	1130.4E6	518.6E6	9418.065	8112.702
31) L7 AR-1260-1	7.237	6.168	152.1E6	82066493	1356.932	1453.658
32) L7 AR-1260-2	7.488	6.357	446.8E6	98275726	3278.690	1452.577 #
33) L7 AR-1260-3	7.855	6.509	71280954	80791973	760.996	1278.981 #
34) L7 AR-1260-4	8.072	6.982	172.4E6	30925525	1648.064	665.001 #
35) L7 AR-1260-5	8.412	7.224	123.6E6	62633379	626.574	581.045
-----						

(f)=RT Delta > 1/2 Window (#)=Amounts differ by > 25% (m)=manual int.

Data Path : Z:\pestpcbsrv\HPCHEM1\ECD\_O\Data\P0071122\  
 Data File : P0087925.D  
 Signal(s) : Signal #1: ECD1A.ch Signal #2: ECD2B.ch  
 Acq On : 11 Jul 2022 22:40  
 Operator : YP/AJ  
 Sample : N3650-13MSD  
 Misc :  
 ALS Vial : 20 Sample Multiplier: 1

**Instrument :**

ECD\_O

**ClientSampleId :**

S5-05-SMSD

**Manual Integrations**

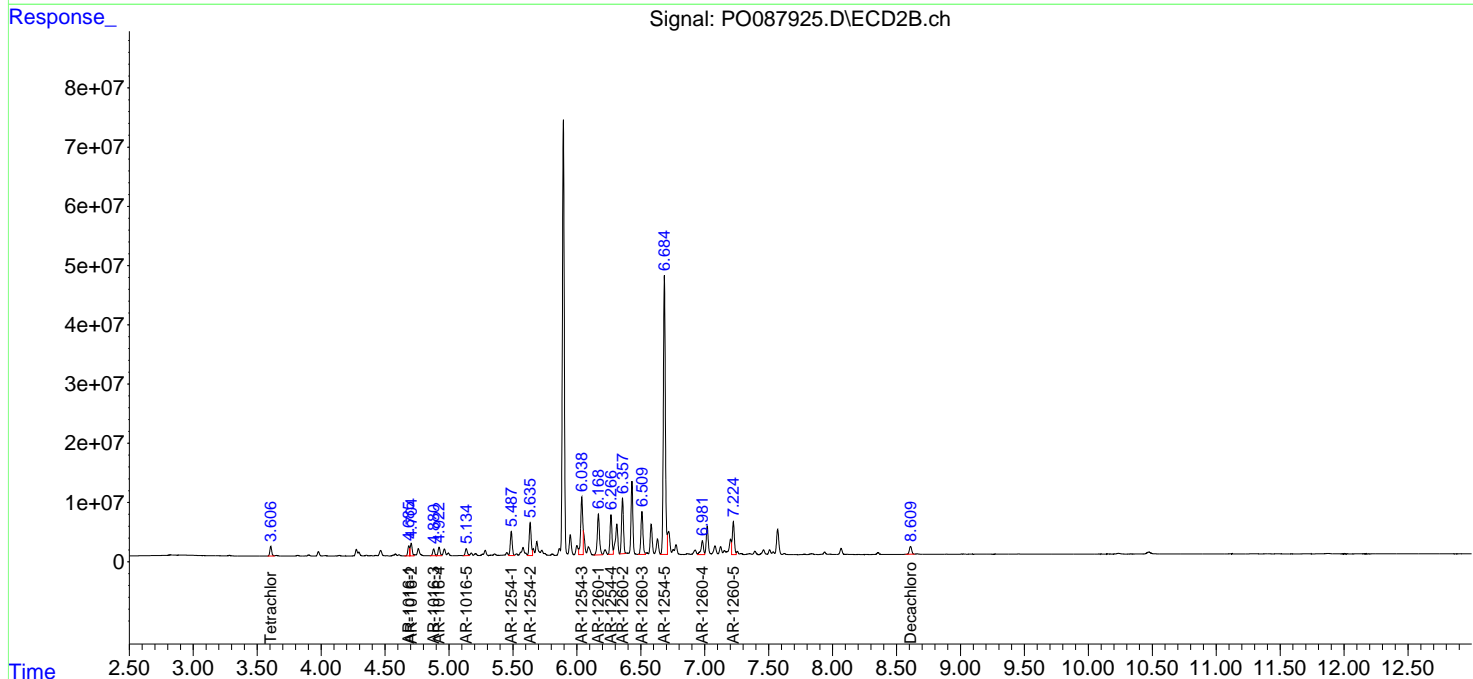
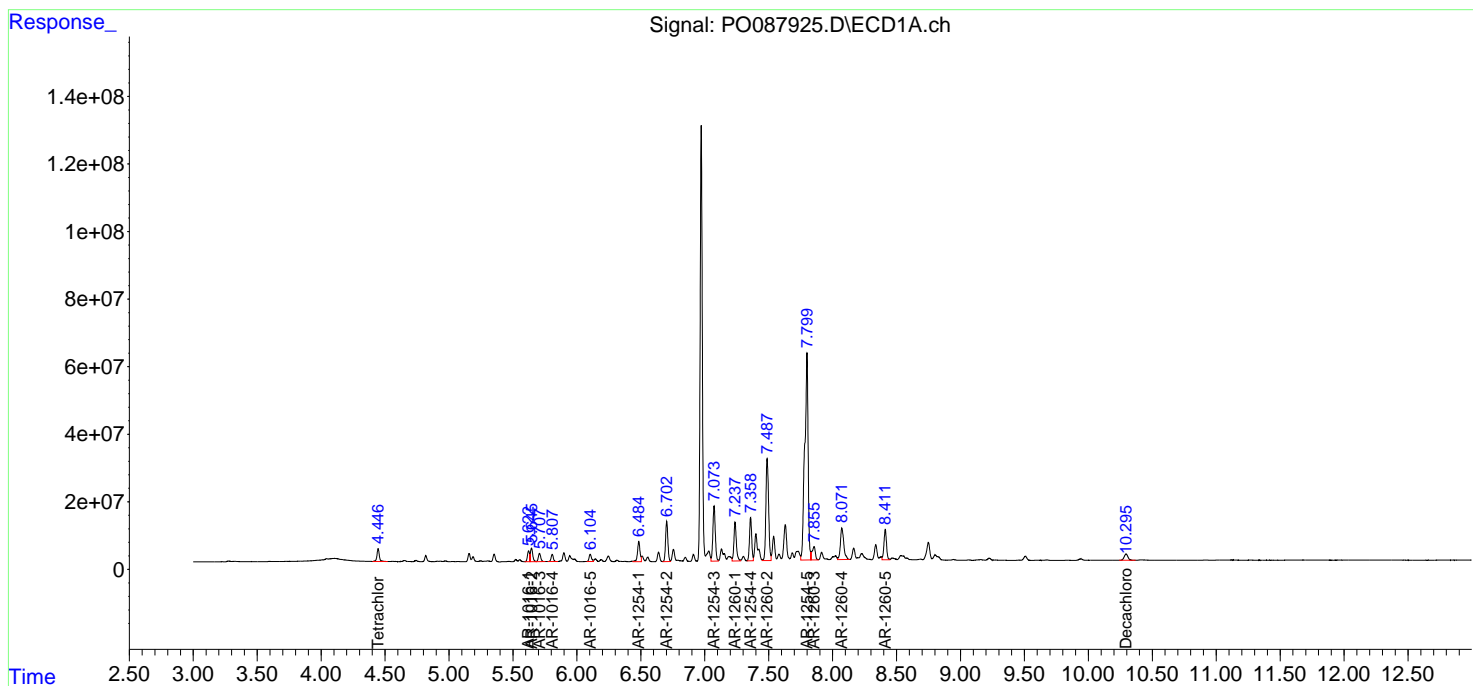
**APPROVED**

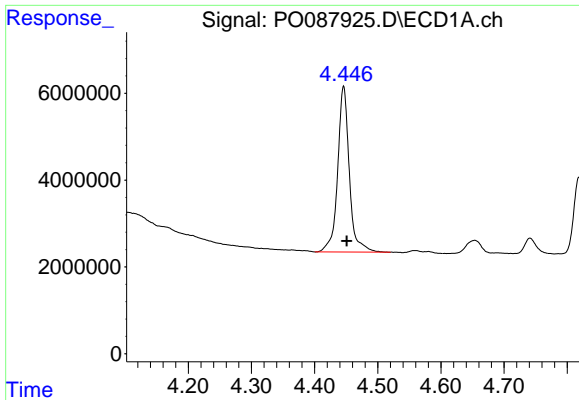
Reviewed By :Yogesh Patel 07/12/2022

Supervised By :Ankita Jodhani 07/12/2022

Integration File signal 1: autoint1.e  
 Integration File signal 2: autoint2.e  
 Quant Time: Jul 12 03:15:11 2022  
 Quant Method : Z:\pestpcbsrv\HPCHEM1\ECD\_O\methods\P0062722.M  
 Quant Title : GC EXTRACTABLES  
 QLast Update : Tue Jun 28 02:46:21 2022  
 Response via : Initial Calibration  
 Integrator: ChemStation

Volume Inj. : 2 µl  
 Signal #1 Phase : ZB-MR1 Signal #2 Phase: ZB-MR2  
 Signal #1 Info : 30Mx0.32mmx 0.50µ Signal #2 Info : 30M x 0.32mm x 0.25µm



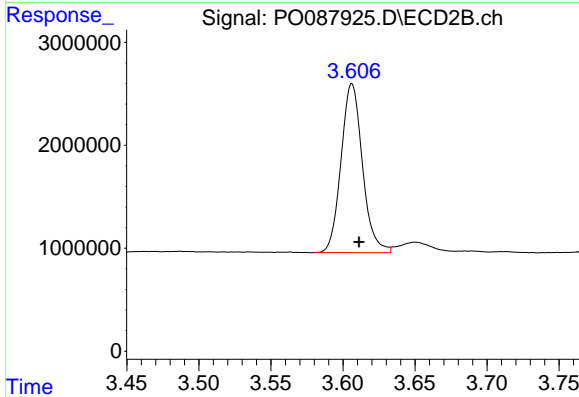


#1 Tetrachloro-m-xylene  
 R.T.: 4.446 min  
 Delta R.T.: -0.005 min  
 Response: 48916614  
 Conc: 18.90 ng/ml

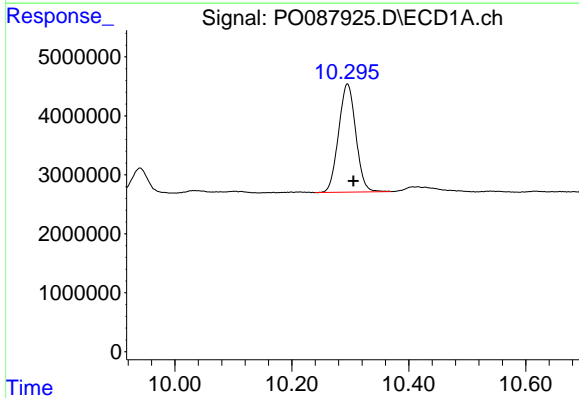
Instrument :  
 ECD\_O  
 ClientSampleId :  
 S5-05-SMSD

Manual Integrations  
 APPROVED

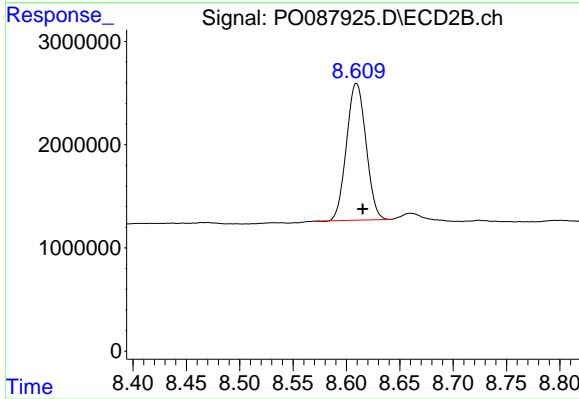
Reviewed By :Yogesh Patel 07/12/2022  
 Supervised By :Ankita Jodhani 07/12/2022



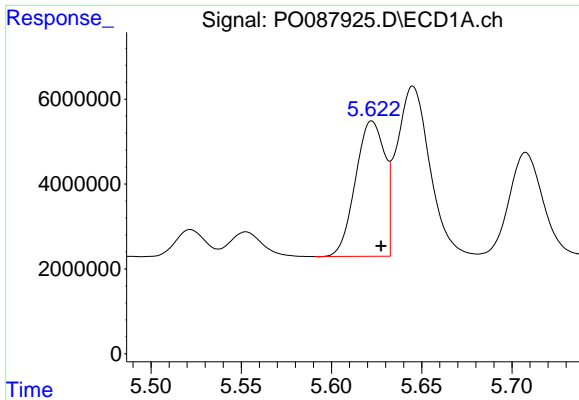
#1 Tetrachloro-m-xylene  
 R.T.: 3.606 min  
 Delta R.T.: -0.005 min  
 Response: 16983235  
 Conc: 17.26 ng/ml



#2 Decachlorobiphenyl  
 R.T.: 10.295 min  
 Delta R.T.: -0.010 min  
 Response: 37432409  
 Conc: 18.33 ng/ml



#2 Decachlorobiphenyl  
 R.T.: 8.609 min  
 Delta R.T.: -0.006 min  
 Response: 16825024  
 Conc: 20.75 ng/ml



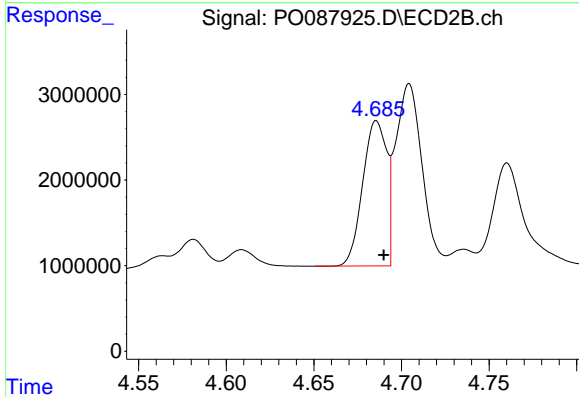
#3 AR-1016-1

R.T.: 5.622 min  
 Delta R.T.: -0.005 min  
 Response: 35998992  
 Conc: 401.09 ng/ml

Instrument :  
 ECD\_O  
 ClientSampleId :  
 S5-05-SMSD

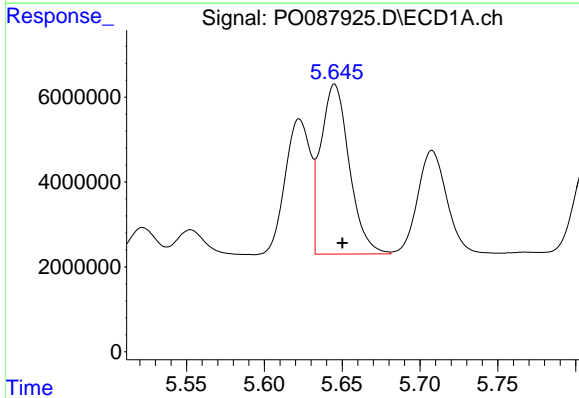
Manual Integrations  
 APPROVED

Reviewed By :Yogesh Patel 07/12/2022  
 Supervised By :Ankita Jodhani 07/12/2022



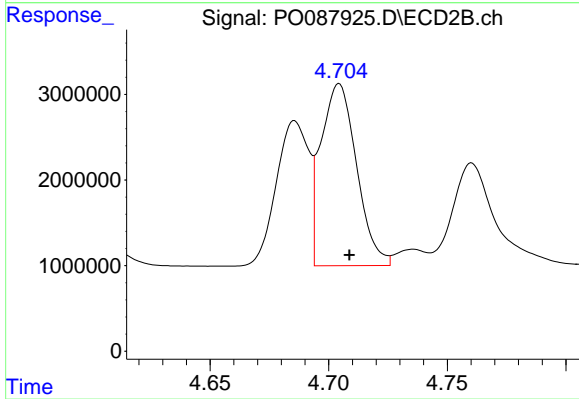
#3 AR-1016-1

R.T.: 4.686 min  
 Delta R.T.: -0.004 min  
 Response: 16139792  
 Conc: 403.59 ng/ml



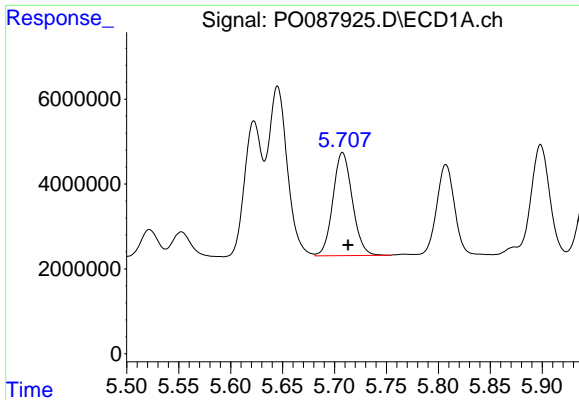
#4 AR-1016-2

R.T.: 5.645 min  
 Delta R.T.: -0.005 min  
 Response: 50973933  
 Conc: 405.59 ng/ml



#4 AR-1016-2

R.T.: 4.704 min  
 Delta R.T.: -0.004 min  
 Response: 22289520  
 Conc: 399.81 ng/ml



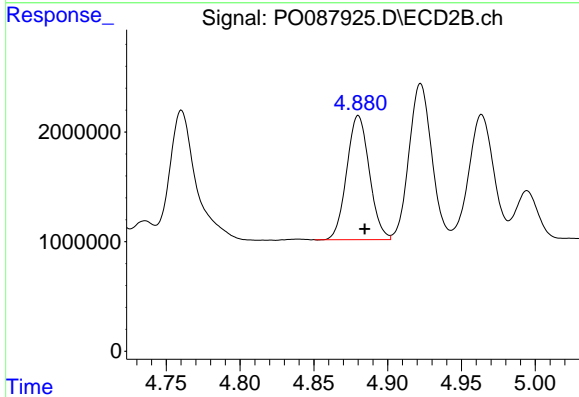
#5 AR-1016-3

R.T.: 5.708 min  
 Delta R.T.: -0.005 min  
 Response: 31589778  
 Conc: 405.88 ng/ml

Instrument :  
 ECD\_O  
 ClientSampleId :  
 S5-05-SMSD

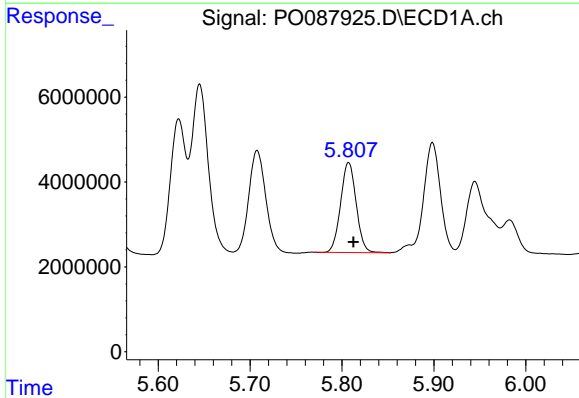
Manual Integrations  
 APPROVED

Reviewed By :Yogesh Patel 07/12/2022  
 Supervised By :Ankita Jodhani 07/12/2022



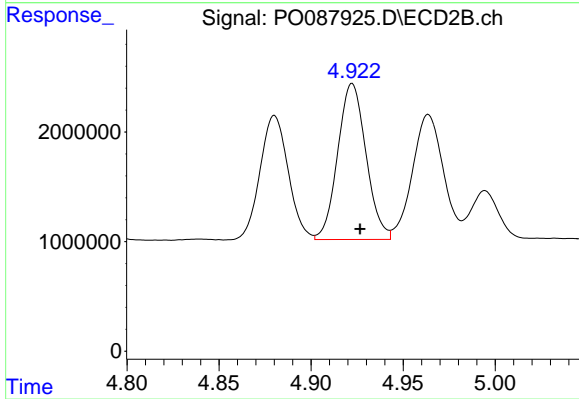
#5 AR-1016-3

R.T.: 4.880 min  
 Delta R.T.: -0.004 min  
 Response: 12071153  
 Conc: 410.02 ng/ml



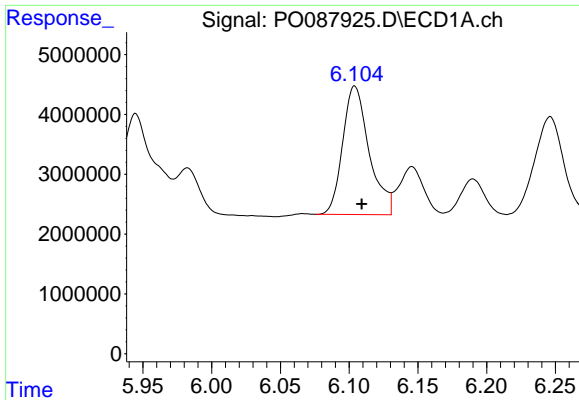
#6 AR-1016-4

R.T.: 5.807 min  
 Delta R.T.: -0.005 min  
 Response: 25022634  
 Conc: 409.37 ng/ml



#6 AR-1016-4

R.T.: 4.922 min  
 Delta R.T.: -0.004 min  
 Response: 15244125  
 Conc: 634.35 ng/ml



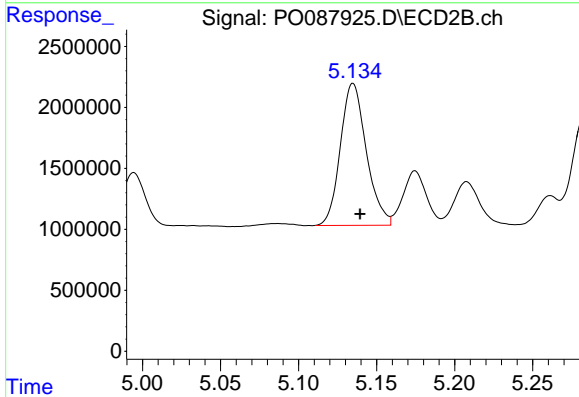
#7 AR-1016-5

R.T.: 6.104 min  
 Delta R.T.: -0.005 min  
 Response: 28813457  
 Conc: 480.78 ng/ml

Instrument :  
 ECD\_O  
 ClientSampleId :  
 S5-05-SMSD

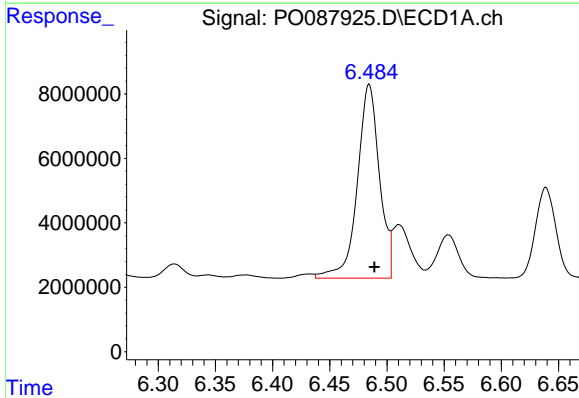
Manual Integrations  
 APPROVED

Reviewed By :Yogesh Patel 07/12/2022  
 Supervised By :Ankita Jodhani 07/12/2022



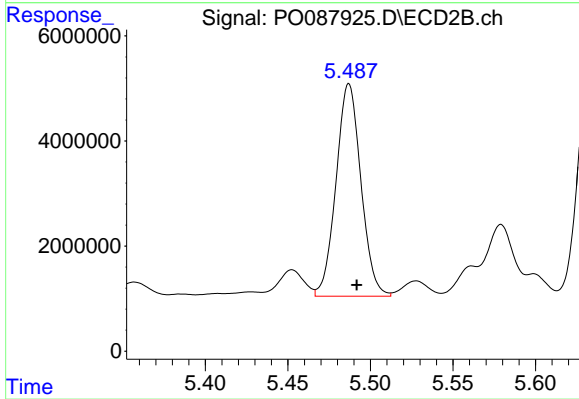
#7 AR-1016-5

R.T.: 5.135 min  
 Delta R.T.: -0.005 min  
 Response: 13483628  
 Conc: 440.81 ng/ml



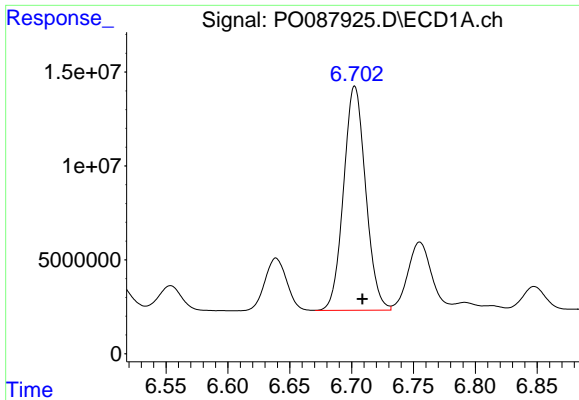
#26 AR-1254-1

R.T.: 6.484 min  
 Delta R.T.: -0.005 min  
 Response: 80964753  
 Conc: 807.72 ng/ml



#26 AR-1254-1

R.T.: 5.487 min  
 Delta R.T.: -0.005 min  
 Response: 42412325  
 Conc: 767.24 ng/ml



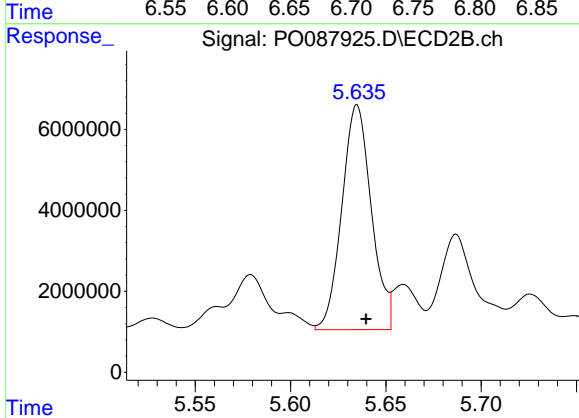
#27 AR-1254-2

R.T.: 6.703 min  
 Delta R.T.: -0.006 min  
 Response: 148273969  
 Conc: 971.63 ng/ml

Instrument :  
 ECD\_O  
 ClientSampleId :  
 S5-05-SMSD

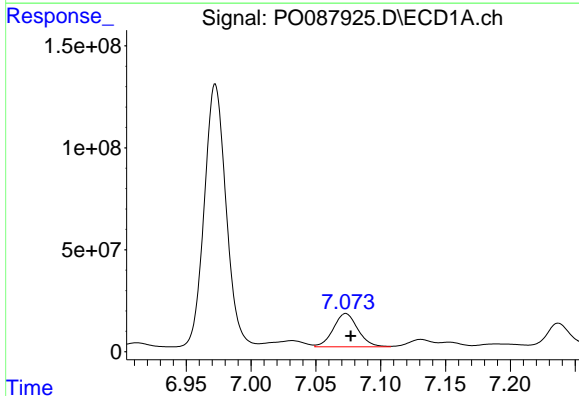
Manual Integrations  
 APPROVED

Reviewed By :Yogesh Patel 07/12/2022  
 Supervised By :Ankita Jodhani 07/12/2022



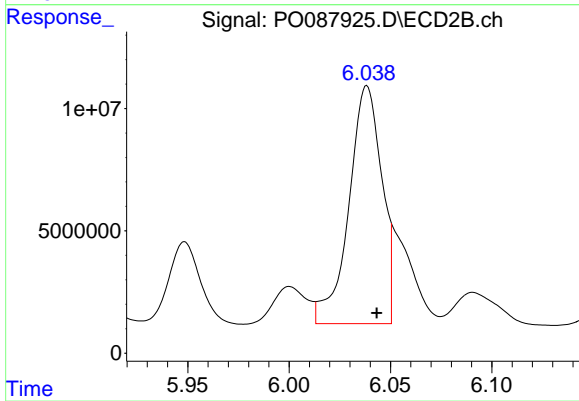
#27 AR-1254-2

R.T.: 5.635 min  
 Delta R.T.: -0.005 min  
 Response: 59797680  
 Conc: 1222.32 ng/ml



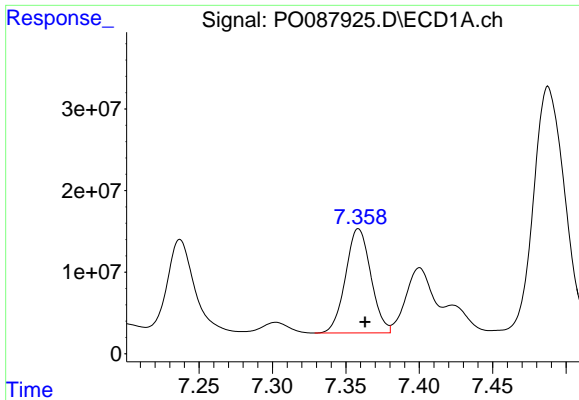
#28 AR-1254-3

R.T.: 7.073 min  
 Delta R.T.: -0.004 min  
 Response: 214602205  
 Conc: 1408.98 ng/ml



#28 AR-1254-3

R.T.: 6.038 min  
 Delta R.T.: -0.005 min  
 Response: 108624678  
 Conc: 1431.48 ng/ml m



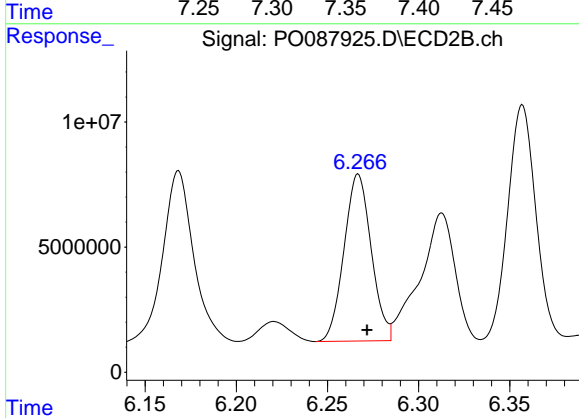
#29 AR-1254-4

R.T.: 7.359 min  
 Delta R.T.: -0.005 min  
 Response: 153336318  
 Conc: 1393.01 ng/ml

Instrument :  
 ECD\_O  
 ClientSampleId :  
 S5-05-SMSD

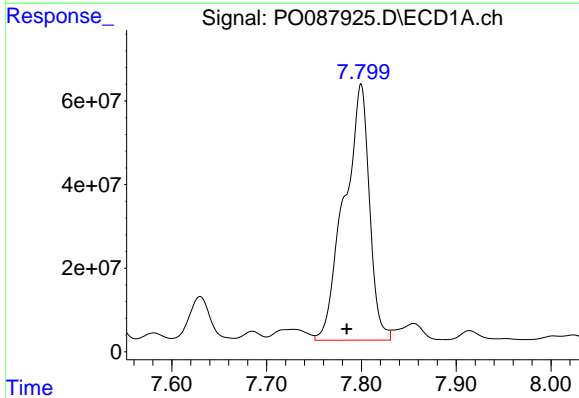
Manual Integrations  
 APPROVED

Reviewed By :Yogesh Patel 07/12/2022  
 Supervised By :Ankita Jodhani 07/12/2022



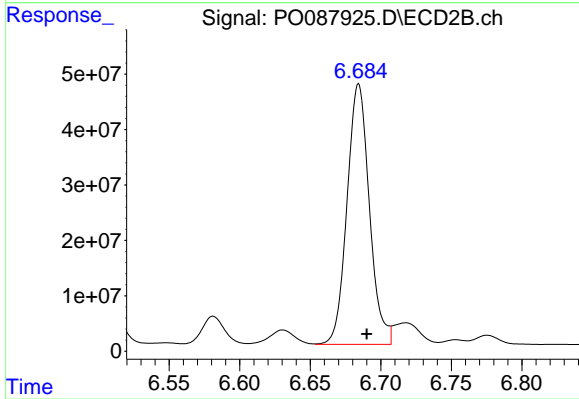
#29 AR-1254-4

R.T.: 6.267 min  
 Delta R.T.: -0.005 min  
 Response: 69378358  
 Conc: 1528.18 ng/ml



#30 AR-1254-5

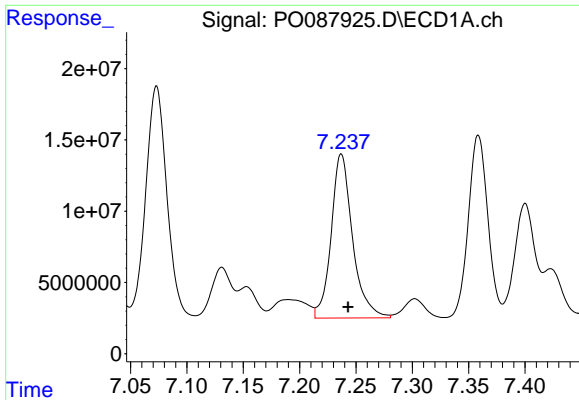
R.T.: 7.800 min  
 Delta R.T.: 0.015 min  
 Response: 1130449836  
 Conc: 9418.07 ng/ml



#30 AR-1254-5

R.T.: 6.684 min  
 Delta R.T.: -0.006 min  
 Response: 518642858  
 Conc: 8112.70 ng/ml





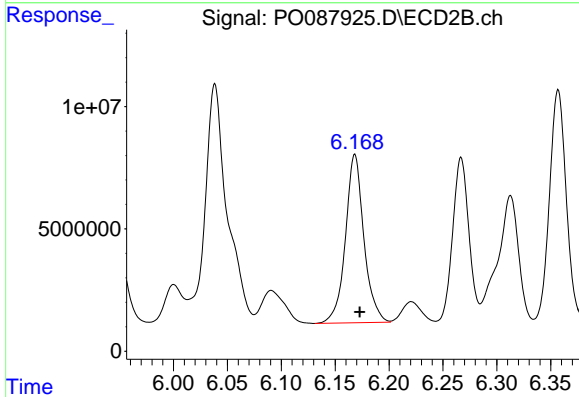
#31 AR-1260-1

R.T.: 7.237 min  
 Delta R.T.: -0.006 min  
 Response: 152116413  
 Conc: 1356.93 ng/ml

Instrument :  
 ECD\_O  
 ClientSampleId :  
 S5-05-SMSD

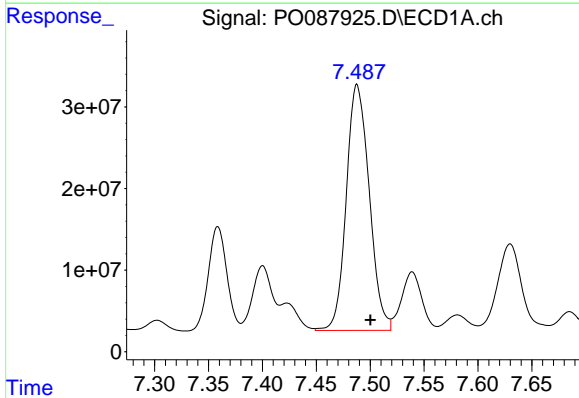
Manual Integrations  
 APPROVED

Reviewed By :Yogesh Patel 07/12/2022  
 Supervised By :Ankita Jodhani 07/12/2022



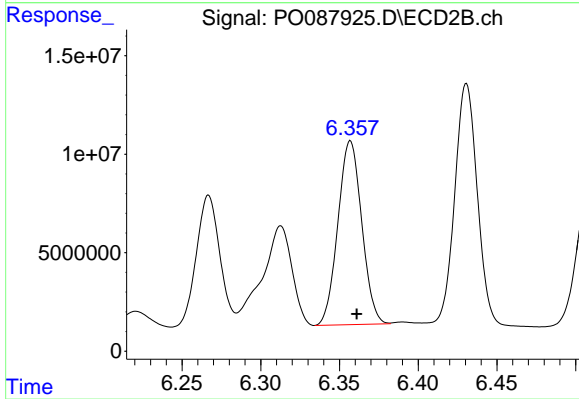
#31 AR-1260-1

R.T.: 6.168 min  
 Delta R.T.: -0.005 min  
 Response: 82066493  
 Conc: 1453.66 ng/ml



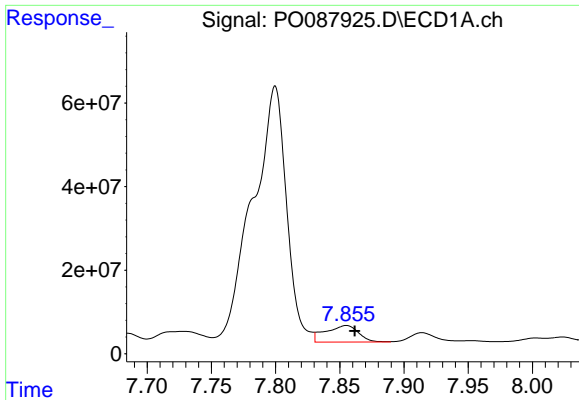
#32 AR-1260-2

R.T.: 7.488 min  
 Delta R.T.: -0.013 min  
 Response: 446806754  
 Conc: 3278.69 ng/ml



#32 AR-1260-2

R.T.: 6.357 min  
 Delta R.T.: -0.004 min  
 Response: 98275726  
 Conc: 1452.58 ng/ml



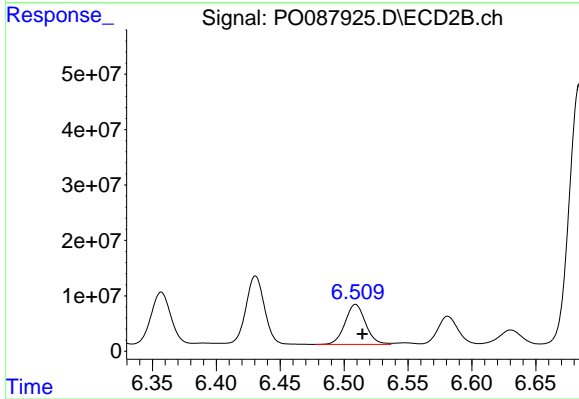
#33 AR-1260-3

R.T.: 7.855 min  
 Delta R.T.: -0.007 min  
 Response: 71280954  
 Conc: 761.00 ng/ml

Instrument :  
 ECD\_O  
 ClientSampleId :  
 S5-05-SMSD

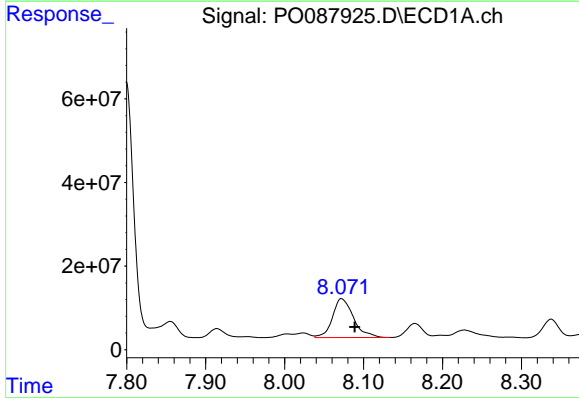
Manual Integrations  
 APPROVED

Reviewed By :Yogesh Patel 07/12/2022  
 Supervised By :Ankita Jodhani 07/12/2022



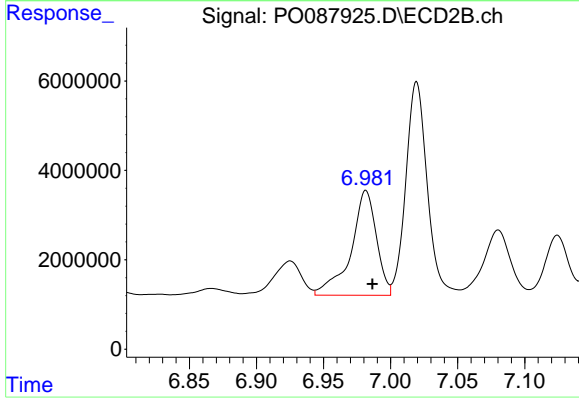
#33 AR-1260-3

R.T.: 6.509 min  
 Delta R.T.: -0.005 min  
 Response: 80791973  
 Conc: 1278.98 ng/ml



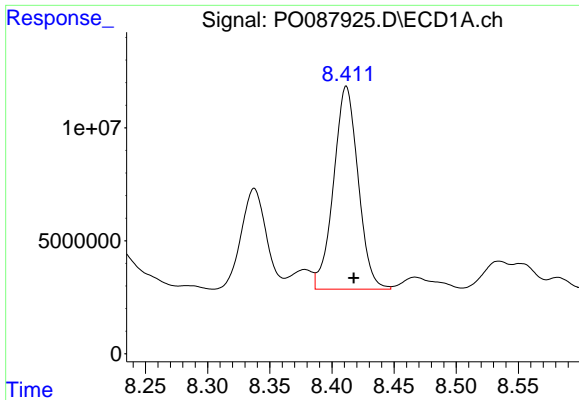
#34 AR-1260-4

R.T.: 8.072 min  
 Delta R.T.: -0.017 min  
 Response: 172401392  
 Conc: 1648.06 ng/ml



#34 AR-1260-4

R.T.: 6.982 min  
 Delta R.T.: -0.005 min  
 Response: 30925525  
 Conc: 665.00 ng/ml



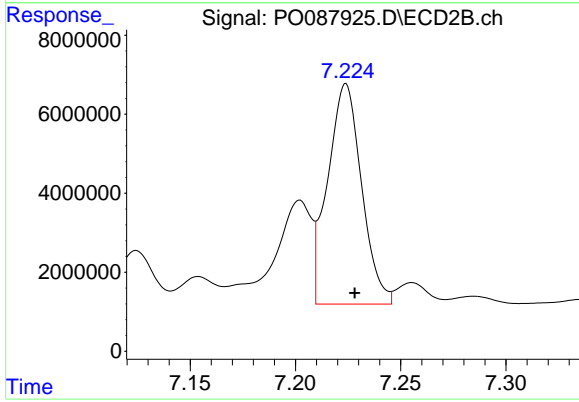
#35 AR-1260-5

R.T.: 8.412 min  
 Delta R.T.: -0.006 min  
 Response: 123601060  
 Conc: 626.57 ng/ml

Instrument :  
 ECD\_O  
 ClientSampleId :  
 S5-05-SMSD

Manual Integrations  
 APPROVED

Reviewed By :Yogesh Patel 07/12/2022  
 Supervised By :Ankita Jodhani 07/12/2022



#35 AR-1260-5

R.T.: 7.224 min  
 Delta R.T.: -0.004 min  
 Response: 62633379  
 Conc: 581.04 ng/ml