

Data Path : Z:\pestpcbsrv\HPCHEM1\ECD_O\Data\PO071218\
 Data File : PO046616.D
 Signal(s) : Signal #1: ECD1A.CH Signal #2: ECD2B.CH
 Acq On : 12 Jul 2018 12:24
 Operator : SM/SJ
 Sample : J3911-01
 Misc :
 ALS Vial : 8 Sample Multiplier: 1

Instrument :
 ECD_O
 ClientSampleId :
 RB47196RTRE

Integration File signal 1: autoint1.e
 Integration File signal 2: autoint2.e
 Quant Time: Jul 12 14:32:26 2018
 Quant Method : Z:\pestpcbsrv\HPCHEM1\ECD_O\methods\PO070718.M
 Quant Title : GC EXTRACTABLES
 QLast Update : Mon Jul 09 15:27:34 2018
 Response via : Initial Calibration
 Integrator: ChemStation 6890 Scale Mode: Small noise peaks clipped

Volume Inj. : 2 µl
 Signal #1 Phase : ZB-MR1 Signal #2 Phase: ZB-MR2
 Signal #1 Info : 30Mx0.32mmx 0.50µ Signal #2 Info : 30M x 0.32mm x 0.25µm

Compound	RT#1	RT#2	Resp#1	Resp#2	ng/ml	ng/ml

System Monitoring Compounds						
1) SA Tetrachlo...	4.209	3.533	1740777	1950021	7.284	9.181 #
2) SA Decachlor...	9.733	8.462	908116	846398	4.764	4.363
Target Compounds						
3) L1 AR-1016-1	0.000	4.384	0	136008	N.D.	24.913 #
8) L2 AR-1221-1	0.000	3.693	0	263321	N.D.	98.468 #
25) L5 AR-1248-5	0.000	5.897	0	102586	N.D.	17.522 #
28) L6 AR-1254-3	0.000	5.897	0	102586	N.D.	5.212 #

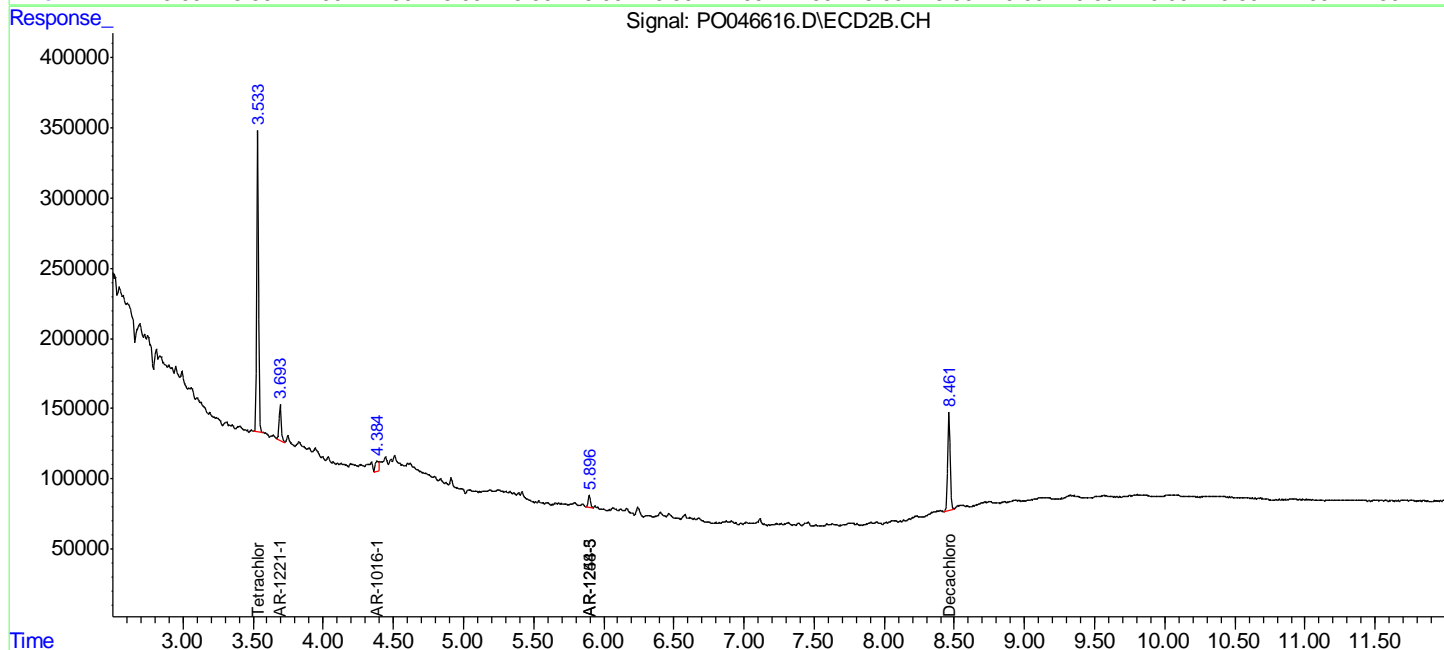
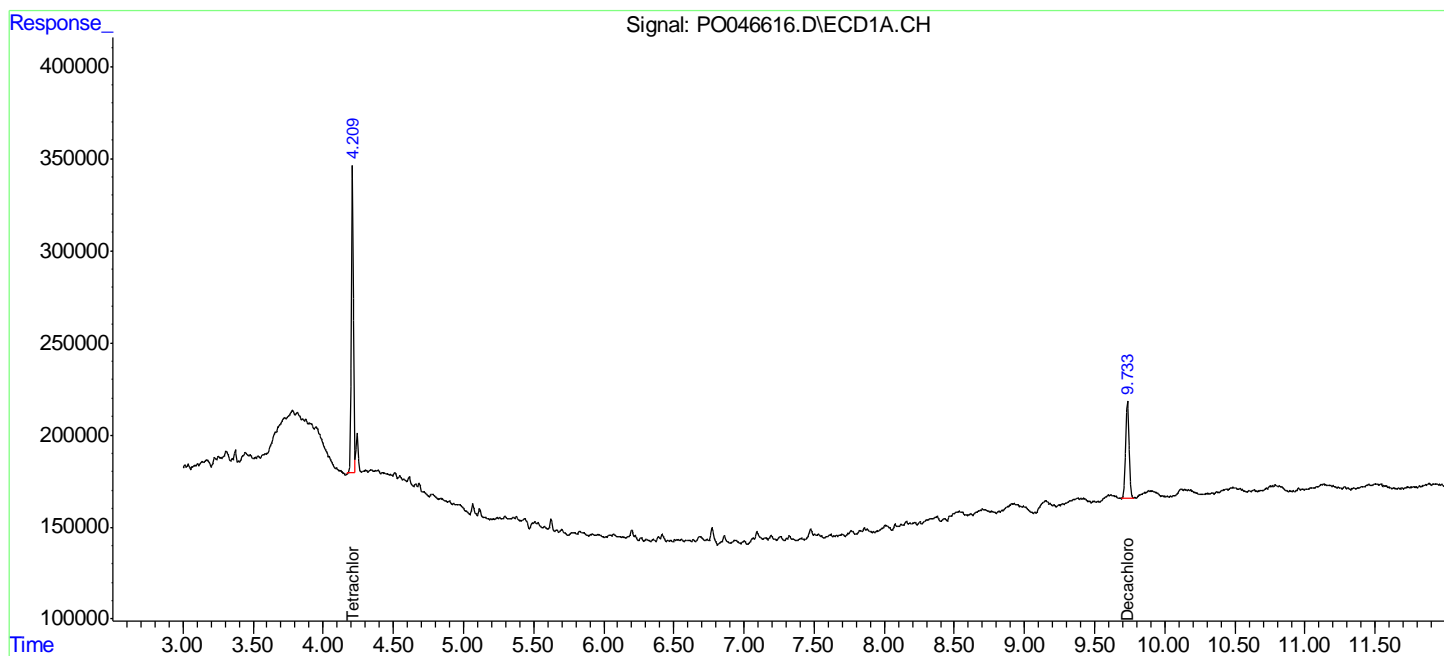
(f)=RT Delta > 1/2 Window (#)=Amounts differ by > 25% (m)=manual int.

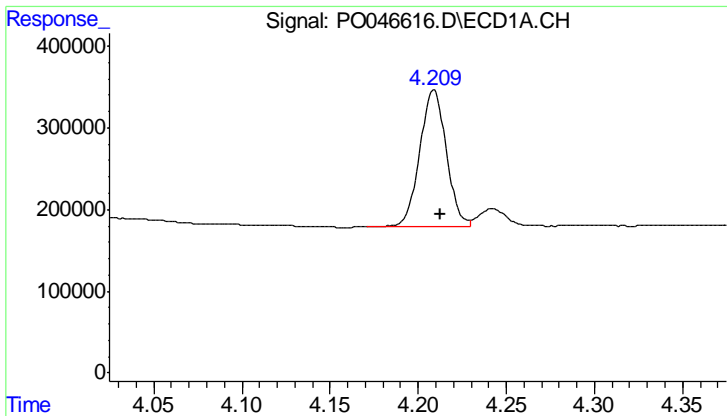
Data Path : Z:\pestpcbsrv\HPCHEM1\ECD_O\Data\PO071218\
 Data File : PO046616.D
 Signal(s) : Signal #1: ECD1A.CH Signal #2: ECD2B.CH
 Acq On : 12 Jul 2018 12:24
 Operator : SM/SJ
 Sample : J3911-01
 Misc :
 ALS Vial : 8 Sample Multiplier: 1

Instrument :
 ECD_O
 ClientSampled :
 RB47196RTRE

Integration File signal 1: autoint1.e
 Integration File signal 2: autoint2.e
 Quant Time: Jul 12 14:32:26 2018
 Quant Method : Z:\pestpcbsrv\HPCHEM1\ECD_O\methods\PO070718.M
 Quant Title : GC EXTRACTABLES
 QLast Update : Mon Jul 09 15:27:34 2018
 Response via : Initial Calibration
 Integrator: ChemStation 6890 Scale Mode: Small noise peaks clipped

Volume Inj. : 2 µl
 Signal #1 Phase : ZB-MR1 Signal #2 Phase: ZB-MR2
 Signal #1 Info : 30Mx0.32mmx 0.50µ Signal #2 Info : 30M x 0.32mm x 0.25µm

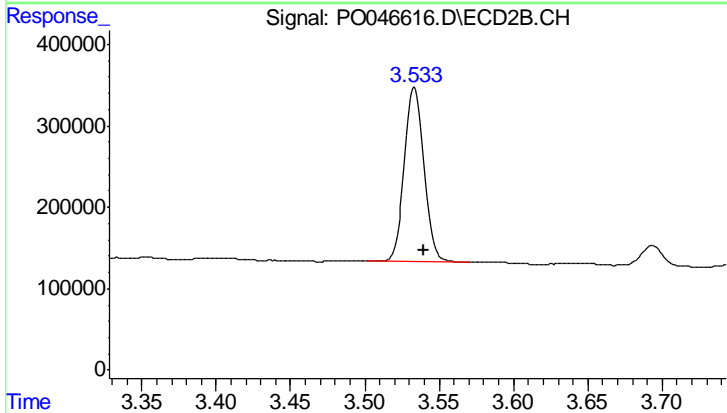




#1 Tetrachloro-m-xylene

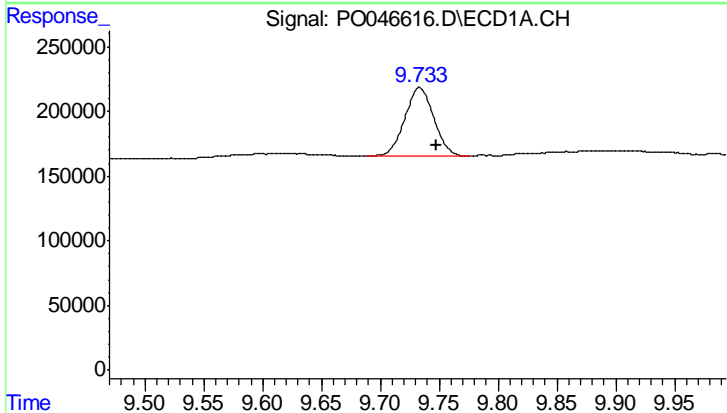
R.T.: 4.209 min
 Delta R.T.: -0.003 min
 Response: 1740777
 Conc: 7.28 ng/ml

Instrument :
 ECD_O
 ClientSampleId :
 RB47196RTRE



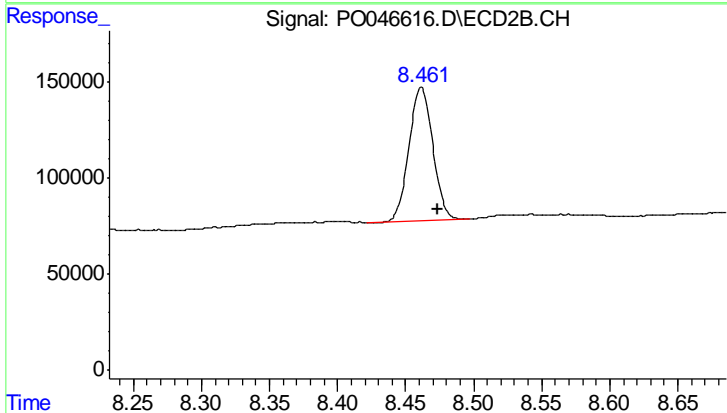
#1 Tetrachloro-m-xylene

R.T.: 3.533 min
 Delta R.T.: -0.006 min
 Response: 1950021
 Conc: 9.18 ng/ml



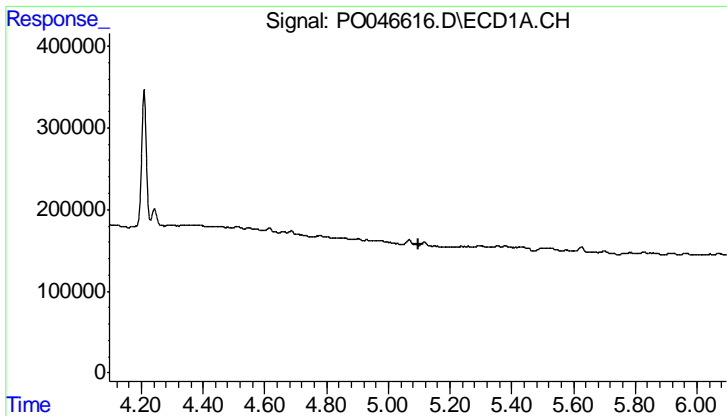
#2 Decachlorobiphenyl

R.T.: 9.733 min
 Delta R.T.: -0.015 min
 Response: 908116
 Conc: 4.76 ng/ml



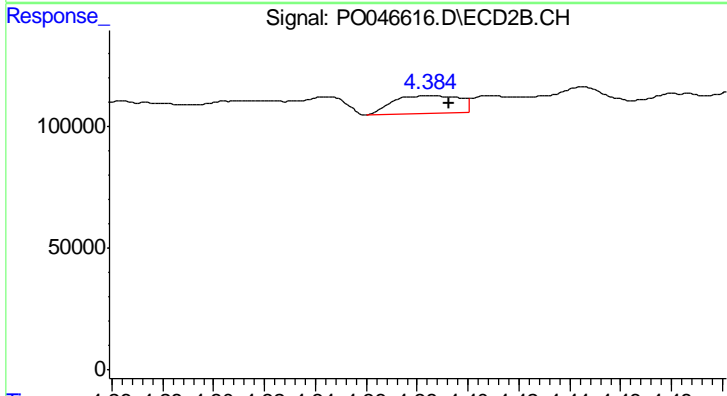
#2 Decachlorobiphenyl

R.T.: 8.462 min
 Delta R.T.: -0.012 min
 Response: 846398
 Conc: 4.36 ng/ml

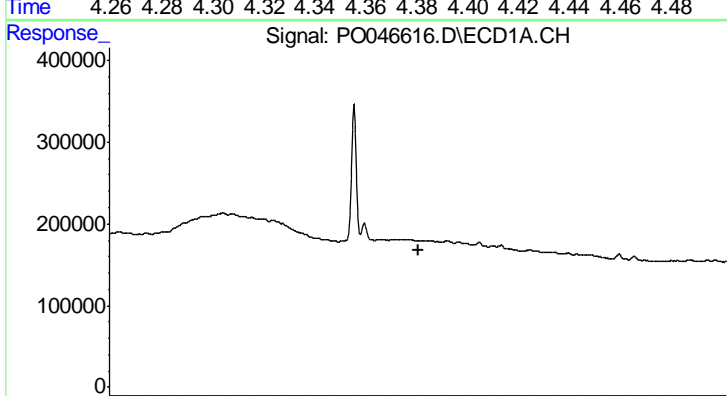


#3 AR-1016-1
 R.T.: 0.000 min
 Exp R.T.: 5.096 min
 Response: 0
 Conc: N.D.

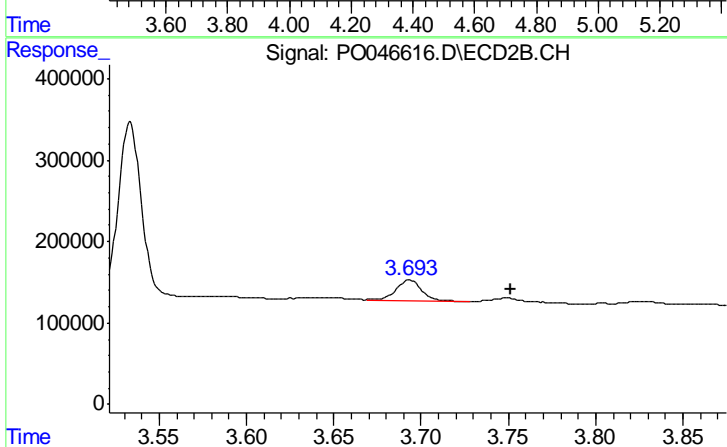
Instrument :
 ECD_O
 ClientSampleId :
 RB47196RTRE



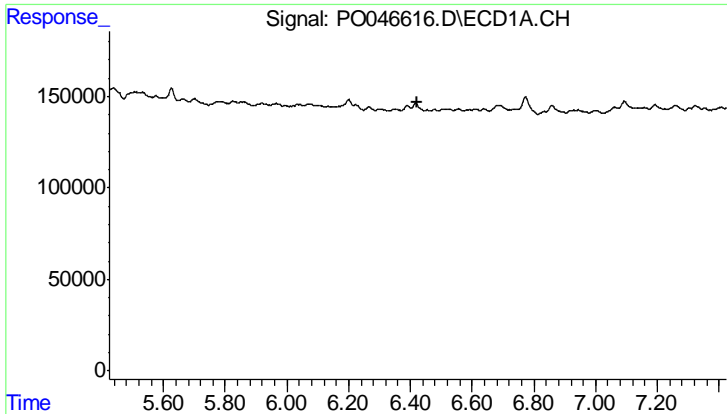
#3 AR-1016-1
 R.T.: 4.384 min
 Delta R.T.: -0.008 min
 Response: 136008
 Conc: 24.91 ng/ml



#8 AR-1221-1
 R.T.: 0.000 min
 Exp R.T.: 4.416 min
 Response: 0
 Conc: N.D.



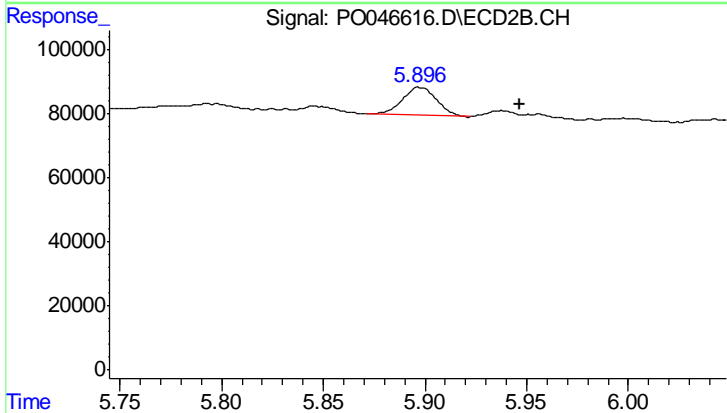
#8 AR-1221-1
 R.T.: 3.693 min
 Delta R.T.: -0.058 min
 Response: 263321
 Conc: 98.47 ng/ml



#25 AR-1248-5

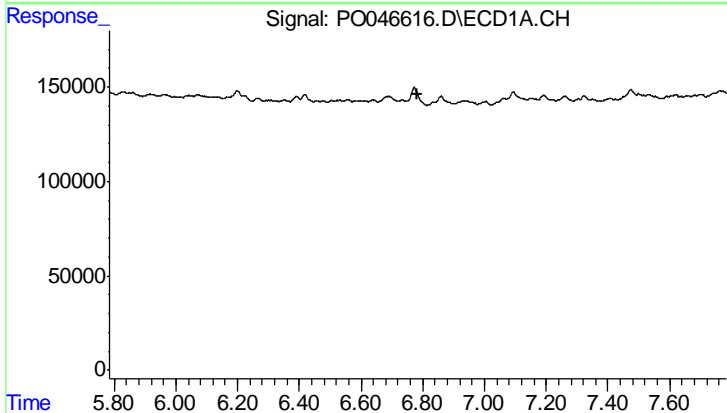
R.T.: 0.000 min
 Exp R.T.: 6.424 min
 Response: 0
 Conc: N.D.

Instrument :
 ECD_O
 ClientSampleId :
 RB47196RTRE



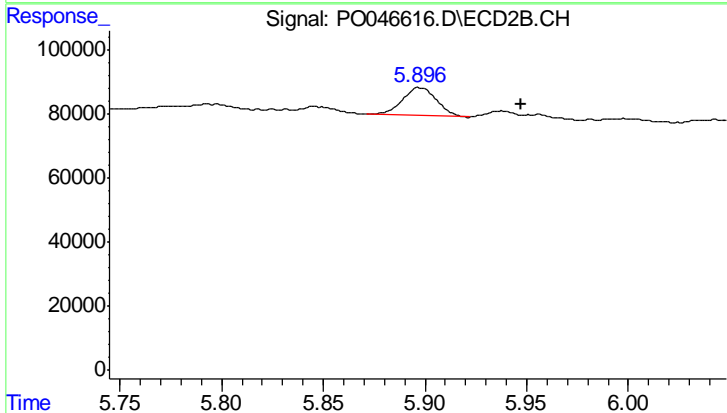
#25 AR-1248-5

R.T.: 5.897 min
 Delta R.T.: -0.049 min
 Response: 102586
 Conc: 17.52 ng/ml



#28 AR-1254-3

R.T.: 0.000 min
 Exp R.T.: 6.784 min
 Response: 0
 Conc: N.D.



#28 AR-1254-3

R.T.: 5.897 min
 Delta R.T.: -0.050 min
 Response: 102586
 Conc: 5.21 ng/ml