

Data Path : Z:\pestpcbsrv\HPCHEM1\ECD\_O\Data\PO071218\  
 Data File : PO046615.D  
 Signal(s) : Signal #1: ECD1A.CH Signal #2: ECD2B.CH  
 Acq On : 12 Jul 2018 12:08  
 Operator : SM/SJ  
 Sample : J3904-03RE  
 Misc :  
 ALS Vial : 7 Sample Multiplier: 1

Instrument :  
 ECD\_O  
 ClientSampleId :  
 REFURBISHED-DRUM-1

Manual Integrations  
 APPROVED

Sohil  
 7/13/2018 2:19:14 PM

Integration File signal 1: autoint1.e  
 Integration File signal 2: autoint2.e  
 Quant Time: Jul 12 14:54:08 2018  
 Quant Method : Z:\pestpcbsrv\HPCHEM1\ECD\_O\methods\PO070718.M  
 Quant Title : GC EXTRACTABLES  
 QLast Update : Mon Jul 09 15:27:34 2018  
 Response via : Initial Calibration  
 Integrator: ChemStation 6890 Scale Mode: Small noise peaks clipped

Volume Inj. : 2 µl  
 Signal #1 Phase : ZB-MR1 Signal #2 Phase: ZB-MR2  
 Signal #1 Info : 30Mx0.32mmx 0.50µ Signal #2 Info : 30M x 0.32mm x 0.25µm

Compound	RT#1	RT#2	Resp#1	Resp#2	ng/ml	ng/ml
----------	------	------	--------	--------	-------	-------

-----  
 System Monitoring Compounds

1) SA Tetrachlo...	4.226	3.555	2212537	2334805	9.258	10.992m
2) SA Decachlor...	9.739	8.470	2284343	1959384	11.985	10.101

Target Compounds  
 -----

(f)=RT Delta > 1/2 Window (#)=Amounts differ by > 25% (m)=manual int.

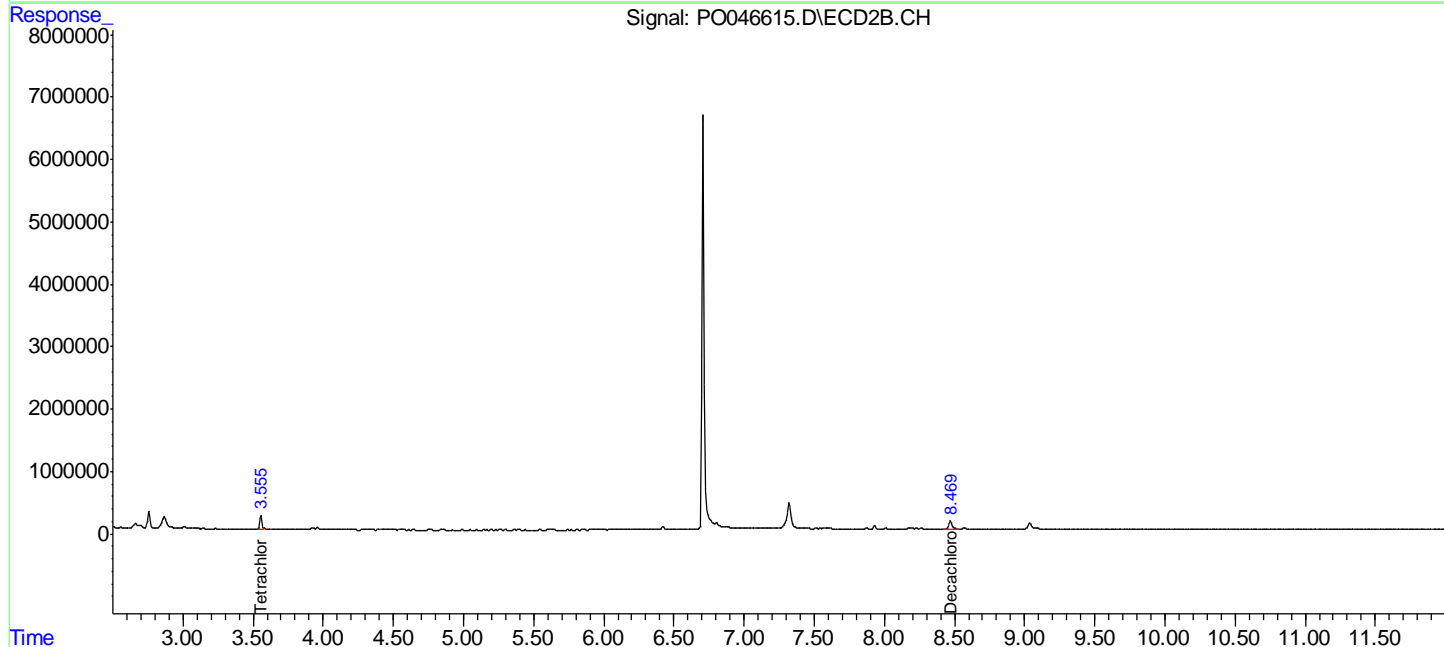
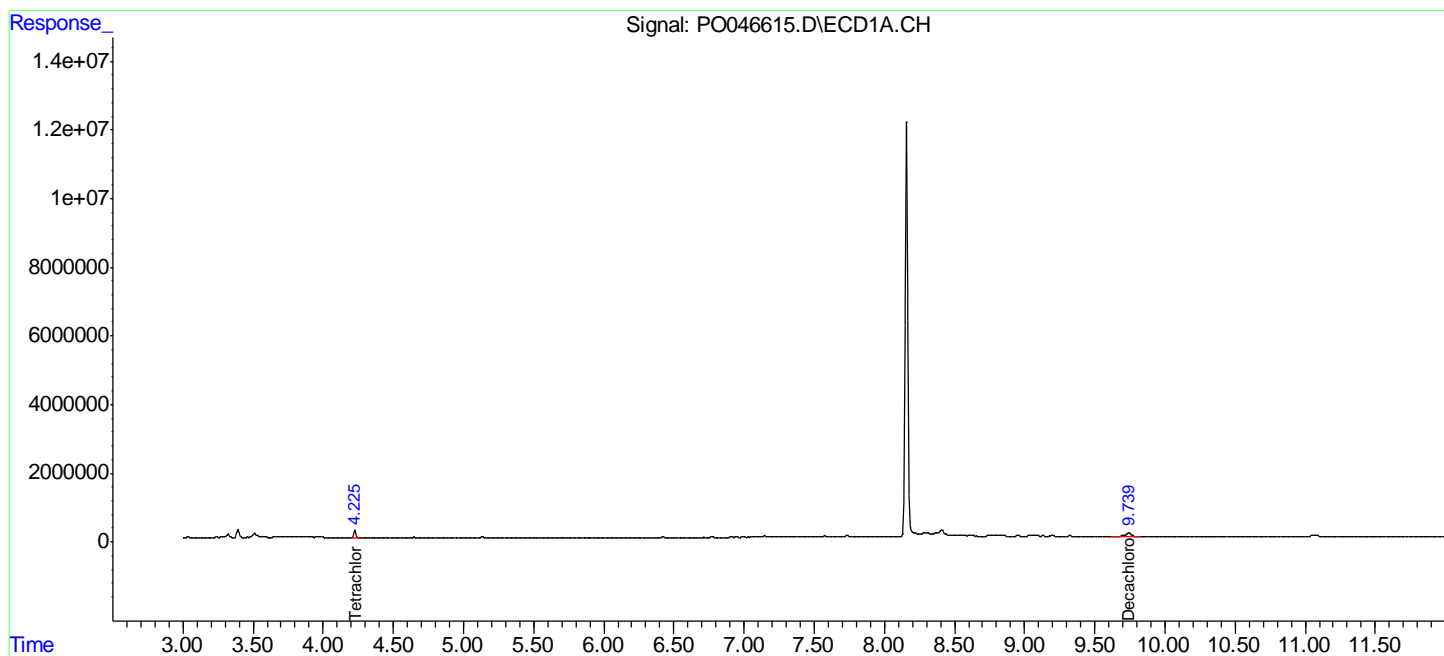
Data Path : Z:\pestpcbsrv\HPCHEM1\ECD\_O\Data\PO071218\  
 Data File : PO046615.D  
 Signal(s) : Signal #1: ECD1A.CH Signal #2: ECD2B.CH  
 Acq On : 12 Jul 2018 12:08  
 Operator : SM/SJ  
 Sample : J3904-03RE  
 Misc :  
 ALS Vial : 7 Sample Multiplier: 1

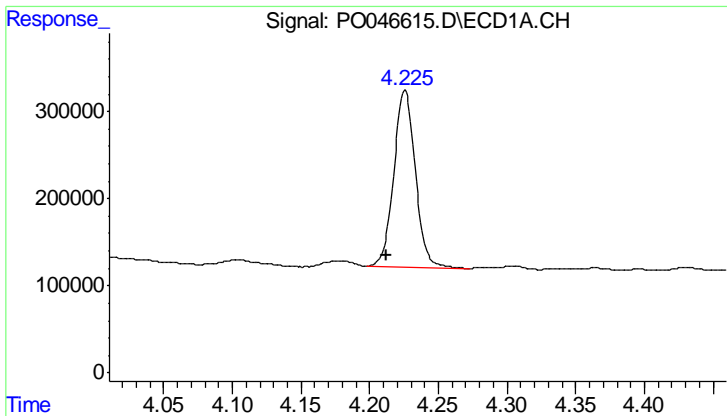
**Instrument :**  
 ECD\_O  
**ClientSampled :**  
 REFURBISHED-DRUM-1

**Manual Integrations**  
**APPROVED**  
 Sohil  
 7/13/2018 2:19:14 PM

Integration File signal 1: autoint1.e  
 Integration File signal 2: autoint2.e  
 Quant Time: Jul 12 14:54:08 2018  
 Quant Method : Z:\pestpcbsrv\HPCHEM1\ECD\_O\methods\PO070718.M  
 Quant Title : GC EXTRACTABLES  
 QLast Update : Mon Jul 09 15:27:34 2018  
 Response via : Initial Calibration  
 Integrator: ChemStation 6890 Scale Mode: Small noise peaks clipped

Volume Inj. : 2 µl  
 Signal #1 Phase : ZB-MR1 Signal #2 Phase: ZB-MR2  
 Signal #1 Info : 30Mx0.32mmx 0.50µ Signal #2 Info : 30M x 0.32mm x 0.25µm



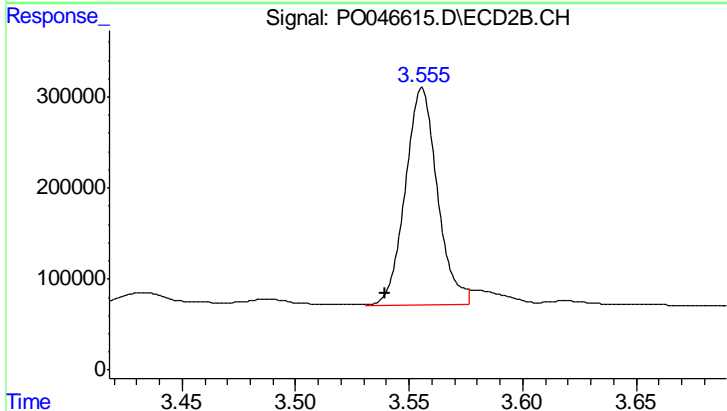


#1 Tetrachloro-m-xylene

R.T.: 4.226 min  
 Delta R.T.: 0.013 min  
 Response: 2212537  
 Conc: 9.26 ng/ml

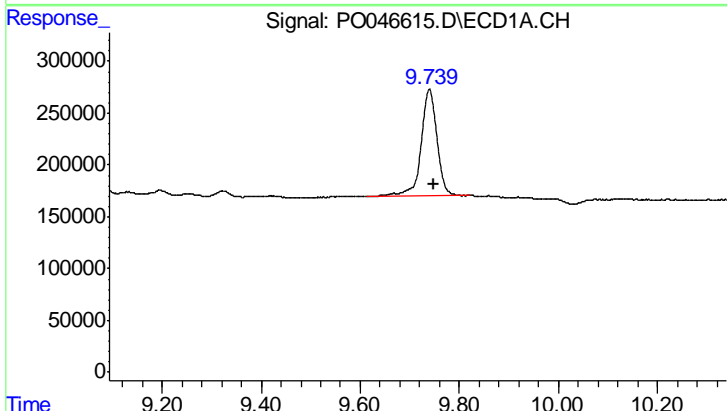
Instrument :  
 ECD\_O  
 ClientSampleId :  
 REFURBISHED-DRUM-1

Manual Integrations  
 APPROVED  
 Sohil  
 7/13/2018 2:19:14 PM



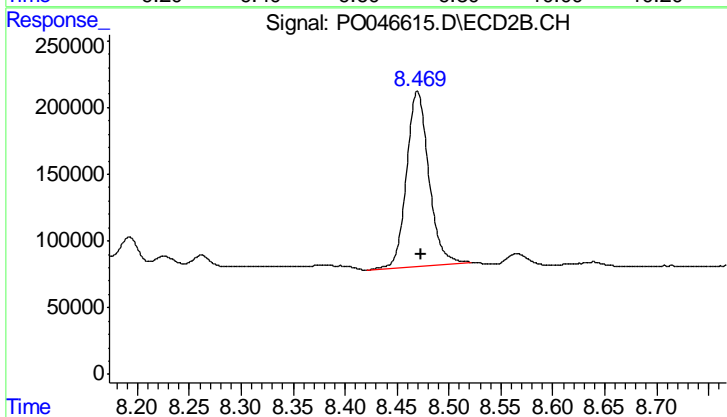
#1 Tetrachloro-m-xylene

R.T.: 3.555 min  
 Delta R.T.: 0.016 min  
 Response: 2334805  
 Conc: 10.99 ng/ml m



#2 Decachlorobiphenyl

R.T.: 9.739 min  
 Delta R.T.: -0.009 min  
 Response: 2284343  
 Conc: 11.98 ng/ml



#2 Decachlorobiphenyl

R.T.: 8.470 min  
 Delta R.T.: -0.004 min  
 Response: 1959384  
 Conc: 10.10 ng/ml