

Data Path : Z:\pestpcbsrv\HPCHEM1\ECD_O\Data\PO071218\
 Data File : PO046624.D
 Signal(s) : Signal #1: ECD1A.CH Signal #2: ECD2B.CH
 Acq On : 12 Jul 2018 15:16
 Operator : SM/SJ
 Sample : J3824-01
 Misc :
 ALS Vial : 14 Sample Multiplier: 1

Instrument :
 ECD_O
 ClientSampleId :
 HD-02-071018

Integration File signal 1: autoint1.e
 Integration File signal 2: autoint2.e
 Quant Time: Jul 13 05:02:55 2018
 Quant Method : Z:\pestpcbsrv\HPCHEM1\ECD_O\methods\PO070718.M
 Quant Title : GC EXTRACTABLES
 QLast Update : Mon Jul 09 15:27:34 2018
 Response via : Initial Calibration
 Integrator: ChemStation 6890 Scale Mode: Small noise peaks clipped

Volume Inj. : 2 µl
 Signal #1 Phase : ZB-MR1 Signal #2 Phase: ZB-MR2
 Signal #1 Info : 30Mx0.32mmx 0.50µ Signal #2 Info : 30M x 0.32mm x 0.25µm

Compound	RT#1	RT#2	Resp#1	Resp#2	ng/ml	ng/ml

System Monitoring Compounds						
1) SA Tetrachlo...	4.207	3.531	5290831	5934989	22.139	27.942 #
2) SA Decachlor...	9.733	8.460	3012762	2766652	15.806	14.262

Target Compounds

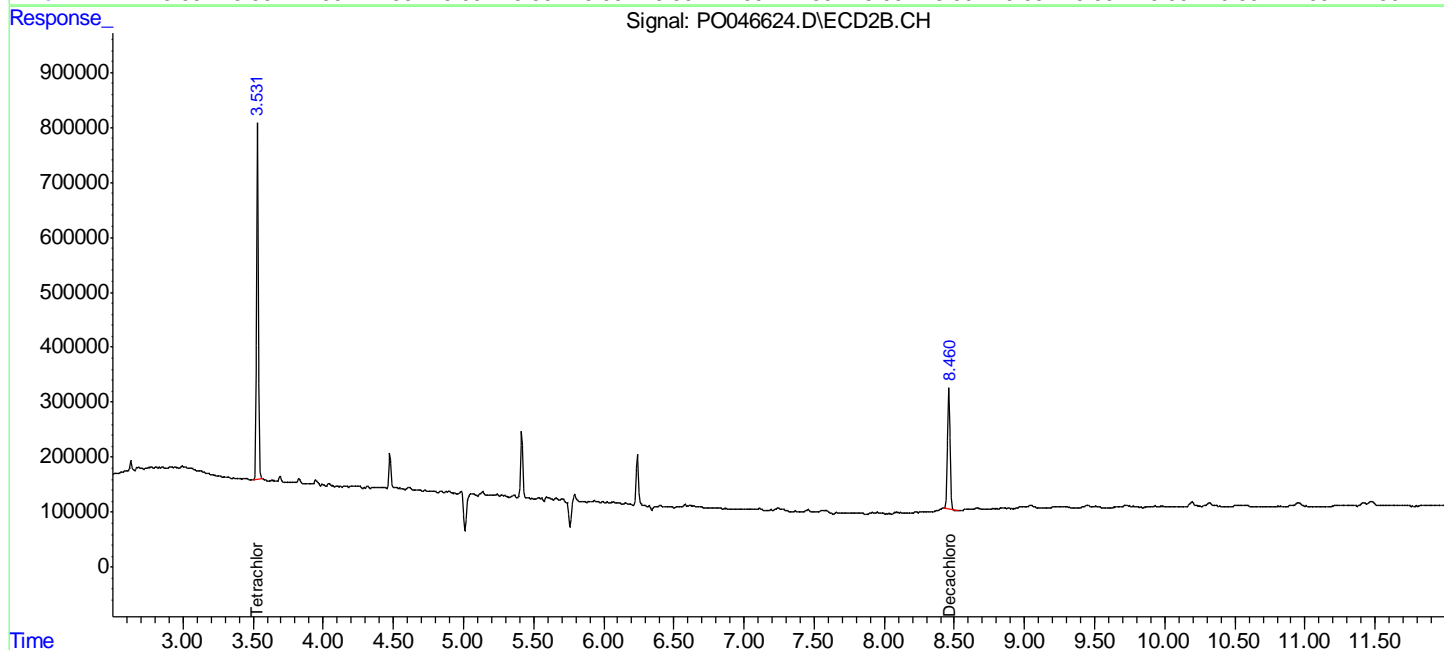
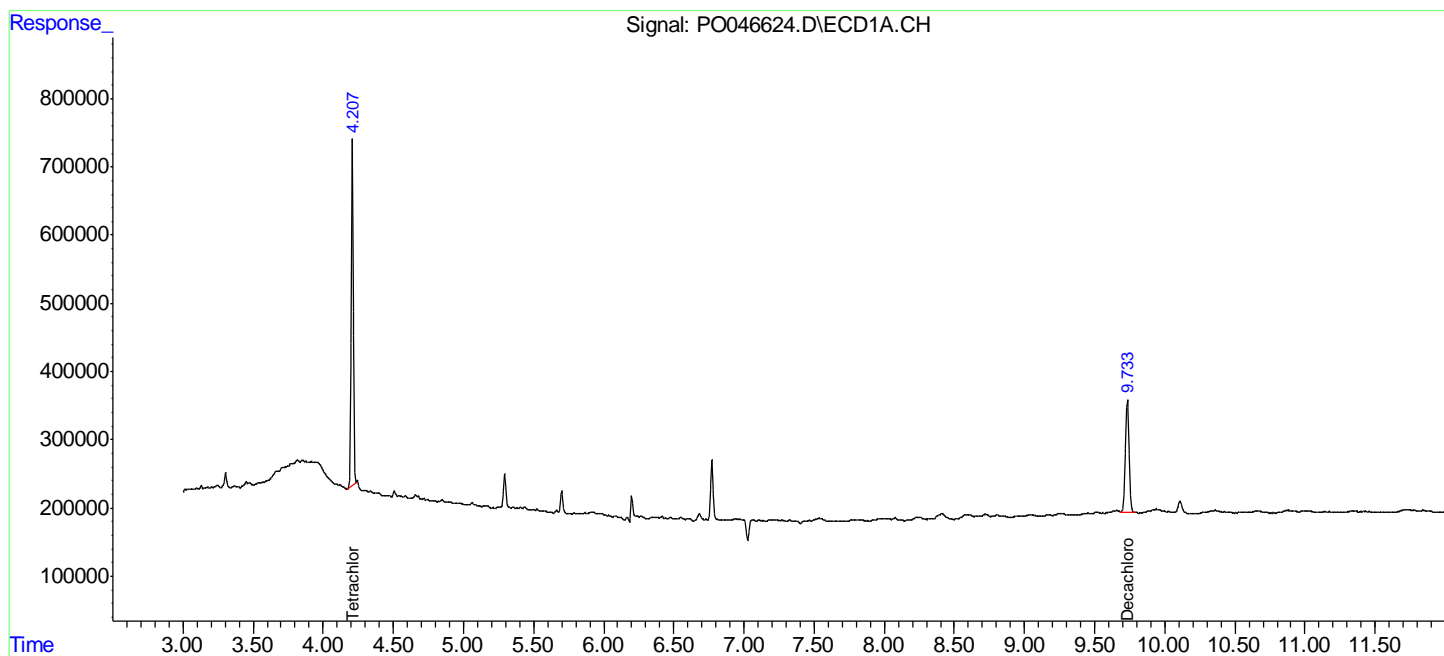
(f)=RT Delta > 1/2 Window (#)=Amounts differ by > 25% (m)=manual int.

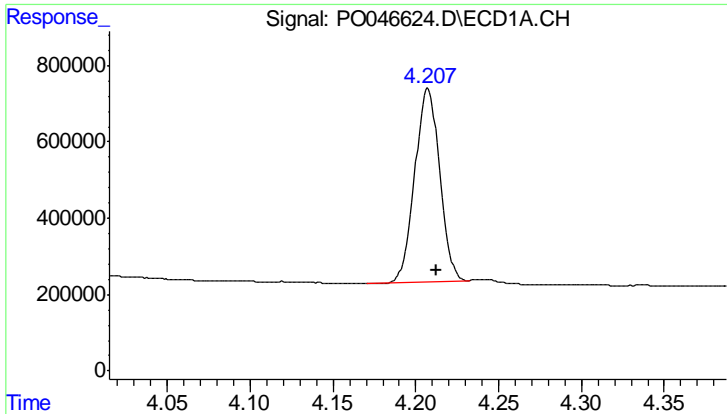
Data Path : Z:\pestpcbsrv\HPCHEM1\ECD_O\Data\PO071218\
 Data File : PO046624.D
 Signal(s) : Signal #1: ECD1A.CH Signal #2: ECD2B.CH
 Acq On : 12 Jul 2018 15:16
 Operator : SM/SJ
 Sample : J3824-01
 Misc :
 ALS Vial : 14 Sample Multiplier: 1

Instrument :
 ECD_O
 ClientSampleId :
 HD-02-071018

Integration File signal 1: autoint1.e
 Integration File signal 2: autoint2.e
 Quant Time: Jul 13 05:02:55 2018
 Quant Method : Z:\pestpcbsrv\HPCHEM1\ECD_O\methods\PO070718.M
 Quant Title : GC EXTRACTABLES
 QLast Update : Mon Jul 09 15:27:34 2018
 Response via : Initial Calibration
 Integrator: ChemStation 6890 Scale Mode: Small noise peaks clipped

Volume Inj. : 2 µl
 Signal #1 Phase : ZB-MR1 Signal #2 Phase: ZB-MR2
 Signal #1 Info : 30Mx0.32mmx 0.50µ Signal #2 Info : 30M x 0.32mm x 0.25µm

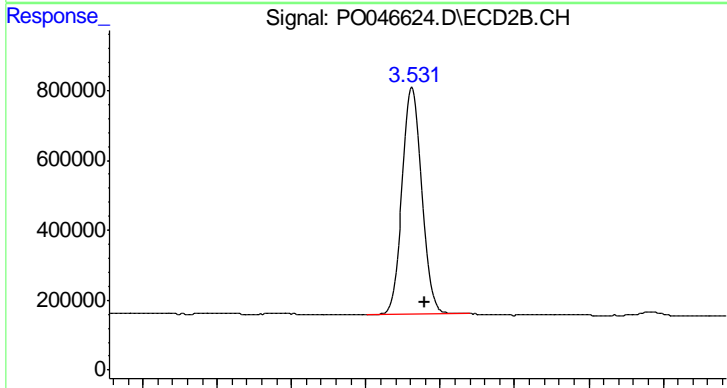




#1 Tetrachloro-m-xylene

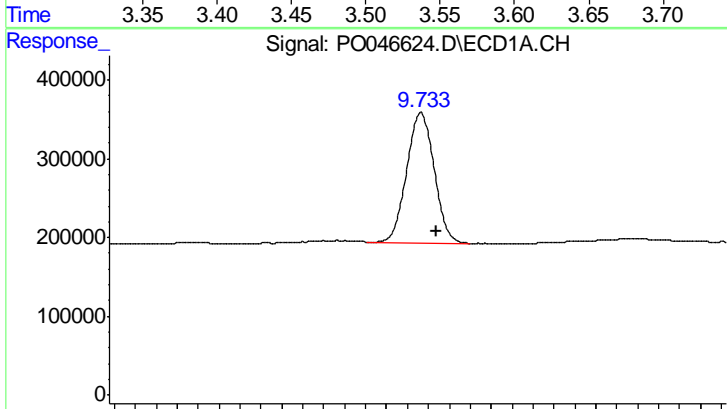
R.T.: 4.207 min
 Delta R.T.: -0.005 min
 Response: 5290831
 Conc: 22.14 ng/ml

Instrument :
 ECD_O
 ClientSampleId :
 HD-02-071018



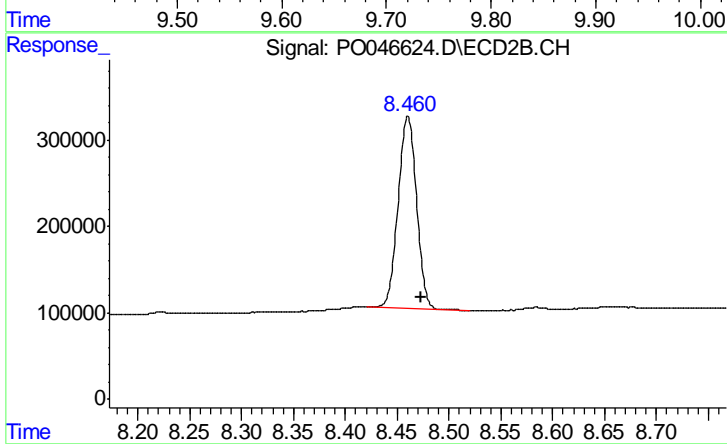
#1 Tetrachloro-m-xylene

R.T.: 3.531 min
 Delta R.T.: -0.008 min
 Response: 5934989
 Conc: 27.94 ng/ml



#2 Decachlorobiphenyl

R.T.: 9.733 min
 Delta R.T.: -0.015 min
 Response: 3012762
 Conc: 15.81 ng/ml



#2 Decachlorobiphenyl

R.T.: 8.460 min
 Delta R.T.: -0.013 min
 Response: 2766652
 Conc: 14.26 ng/ml