

Data Path : Z:\pestpcbsrv\HPCHEM1\ECD_O\Data\PO071218\
 Data File : PO046675.D
 Signal(s) : Signal #1: ECD1A.CH Signal #2: ECD2B.CH
 Acq On : 13 Jul 2018 10:39
 Operator : SM/SJ
 Sample : AR1660CCC500
 Misc :
 ALS Vial : 3 Sample Multiplier: 1

Instrument :
 ECD_O
ClientSampleId :
 AR1660CCC500

Manual Integrations
APPROVED
 Sohil
 7/13/2018 2:38:27 PM
 7/13/2018 2:38:27 PM

Integration File signal 1: autoint1.e
 Integration File signal 2: autoint2.e
 Quant Time: Jul 13 12:07:29 2018
 Quant Method : Z:\pestpcbsrv\HPCHEM1\ECD_O\methods\PO070718.M
 Quant Title : GC EXTRACTABLES
 QLast Update : Mon Jul 09 15:27:34 2018
 Response via : Initial Calibration
 Integrator: ChemStation 6890 Scale Mode: Small noise peaks clipped

Volume Inj. : 2 µl
 Signal #1 Phase : ZB-MR1 Signal #2 Phase: ZB-MR2
 Signal #1 Info : 30Mx0.32mmx 0.50µ Signal #2 Info : 30M x 0.32mm x 0.25µm

Compound	RT#1	RT#2	Resp#1	Resp#2	ng/ml	ng/ml

System Monitoring Compounds						
1) SA Tetrachlo...	4.199	3.524	12039851	11280378	50.379	53.108
2) SA Decachlor...	9.719	8.451	9613812	9752459	50.438	50.275
Target Compounds						
3) L1 AR-1016-1	5.082	4.375	3119466	3235688	553.001	592.701
4) L1 AR-1016-2	5.428	4.826	4152066	2589881	580.144	534.121
5) L1 AR-1016-3	5.524	4.866	3426118	3146773	570.002	540.056m
6) L1 AR-1016-4	5.816	5.036	3410778	3761652	584.806	592.144m
7) L1 AR-1016-5	5.956	5.183	3829278	3106271	588.747	563.675
31) L7 AR-1260-1	6.931	6.057	6069848	6991615	528.484	535.995
32) L7 AR-1260-2	7.186	6.243	7403922	8803975	548.457	552.134
33) L7 AR-1260-3	7.463	6.568	8193845	9581868	506.437m	534.315m
34) L7 AR-1260-4	8.068	7.103	11005871	14518313	523.493	522.572
35) L7 AR-1260-5	8.365	7.447	6765697	10019949	501.652	521.552

(f)=RT Delta > 1/2 Window (#)=Amounts differ by > 25% (m)=manual int.

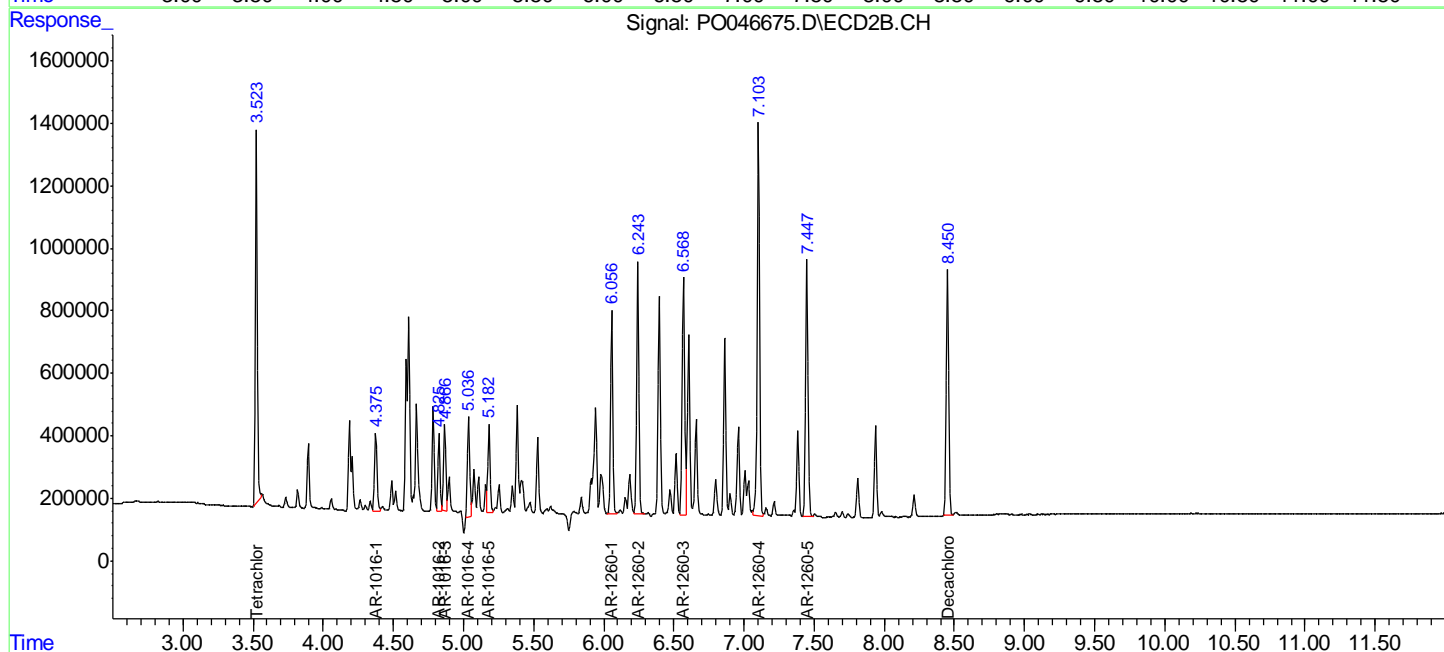
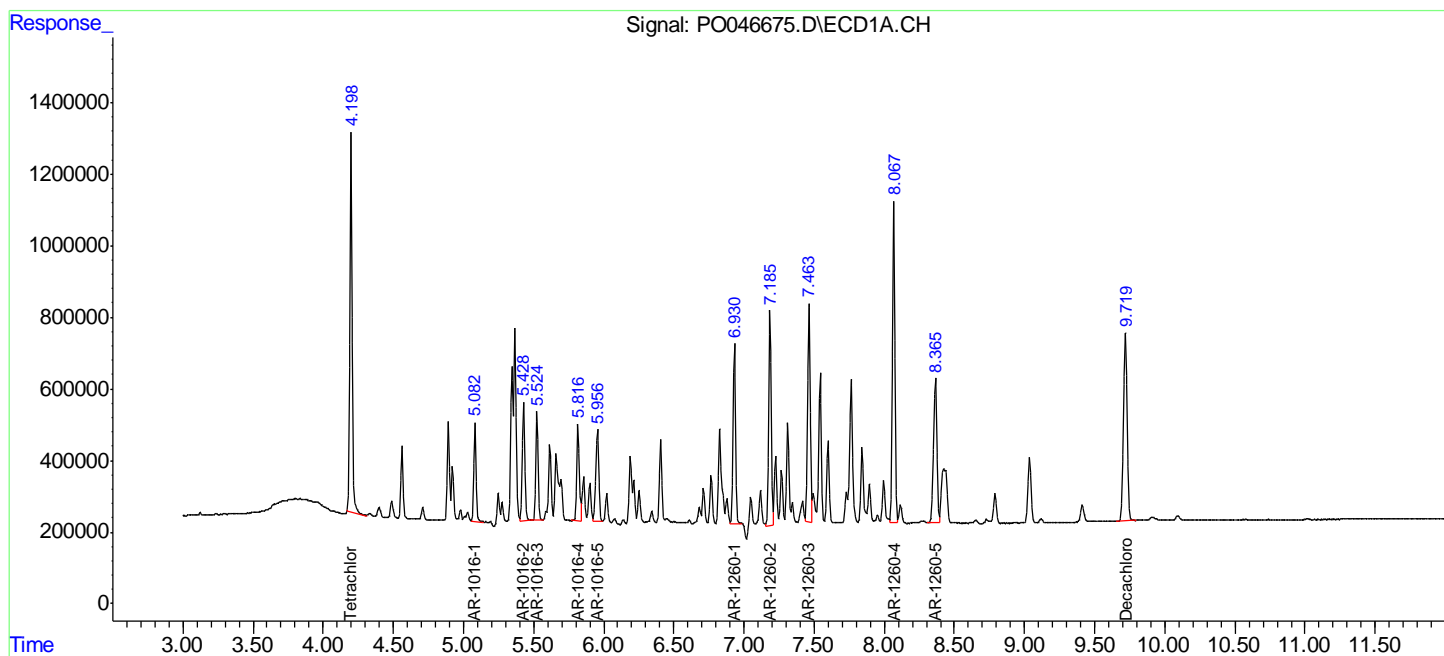
Data Path : Z:\pestpcbsrv\HPCHEM1\ECD_O\Data\PO071218\
 Data File : PO046675.D
 Signal(s) : Signal #1: ECD1A.CH Signal #2: ECD2B.CH
 Acq On : 13 Jul 2018 10:39
 Operator : SM/SJ
 Sample : AR1660CCC500
 Misc :
 ALS Vial : 3 Sample Multiplier: 1

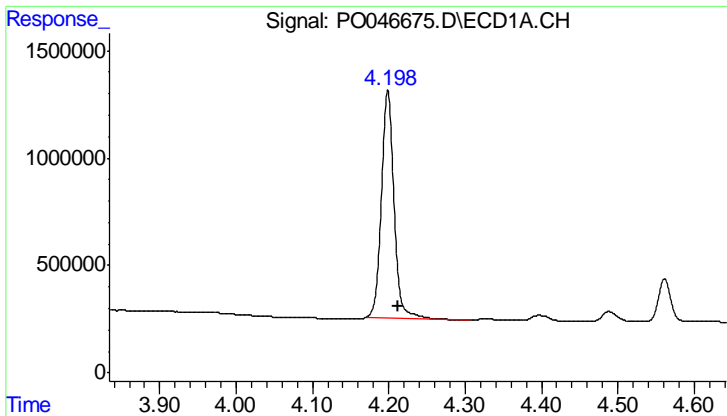
Instrument :
 ECD_O
ClientSampled :
 AR1660CCC500

Manual Integrations
APPROVED
 Sohil
 7/13/2018 2:38:27 PM
 7/13/2018 2:38:27 PM

Integration File signal 1: autoint1.e
 Integration File signal 2: autoint2.e
 Quant Time: Jul 13 12:07:29 2018
 Quant Method : Z:\pestpcbsrv\HPCHEM1\ECD_O\methods\PO070718.M
 Quant Title : GC EXTRACTABLES
 QLast Update : Mon Jul 09 15:27:34 2018
 Response via : Initial Calibration
 Integrator: ChemStation 6890 Scale Mode: Small noise peaks clipped

Volume Inj. : 2 µl
 Signal #1 Phase : ZB-MR1 Signal #2 Phase: ZB-MR2
 Signal #1 Info : 30Mx0.32mmx 0.50µ Signal #2 Info : 30M x 0.32mm x 0.25µm





#1 Tetrachloro-m-xylene

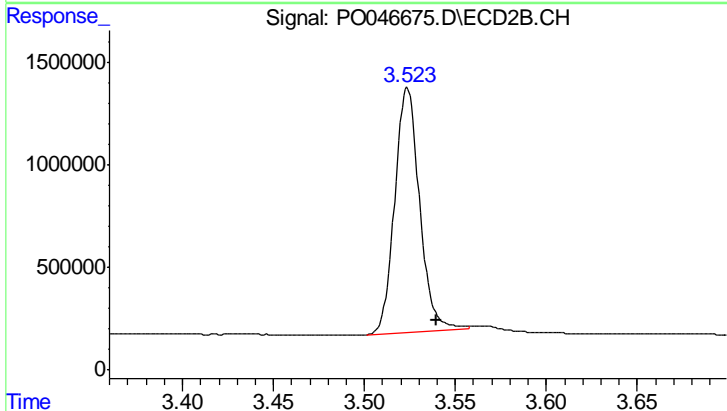
R.T.: 4.199 min
 Delta R.T.: -0.014 min
 Response: 12039851
 Conc: 50.38 ng/ml

Instrument :
 ECD_O
 ClientSampleId :
 AR1660CCC500

Manual Integrations
 APPROVED

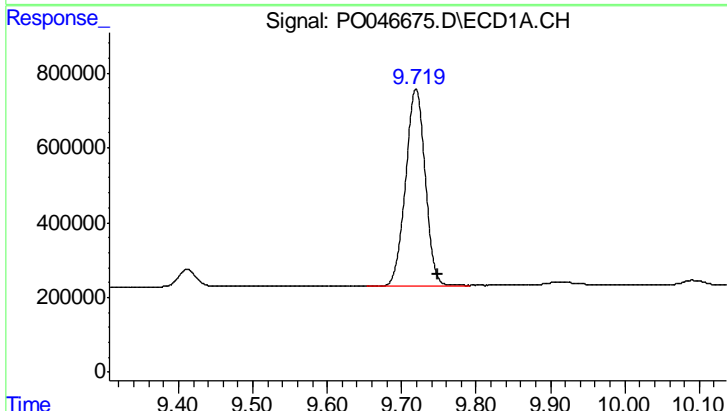
Sohil
 7/13/2018 2:38:27 PM

7/13/2018 2:38:27 PM



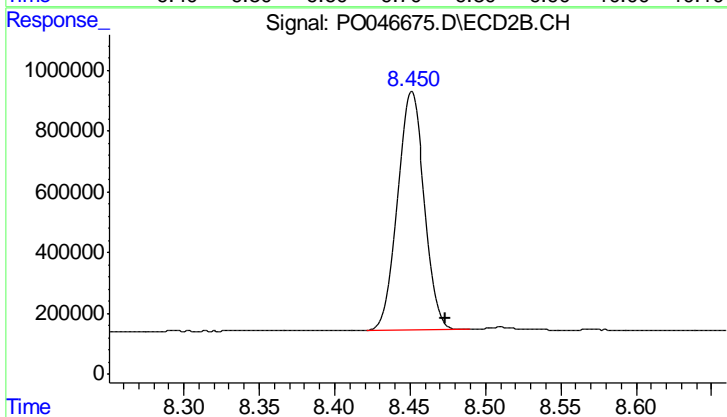
#1 Tetrachloro-m-xylene

R.T.: 3.524 min
 Delta R.T.: -0.016 min
 Response: 11280378
 Conc: 53.11 ng/ml



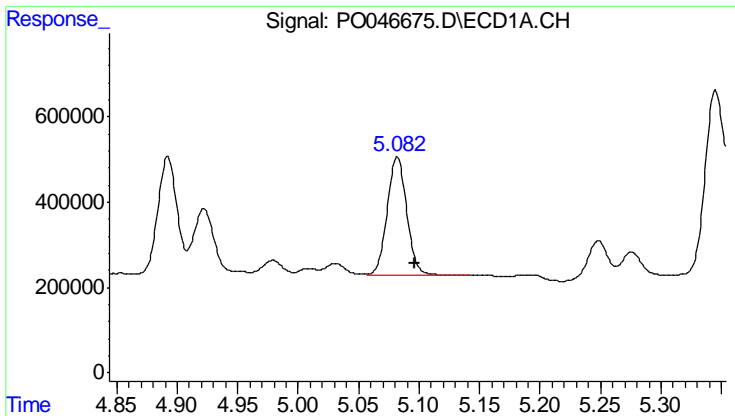
#2 Decachlorobiphenyl

R.T.: 9.719 min
 Delta R.T.: -0.028 min
 Response: 9613812
 Conc: 50.44 ng/ml



#2 Decachlorobiphenyl

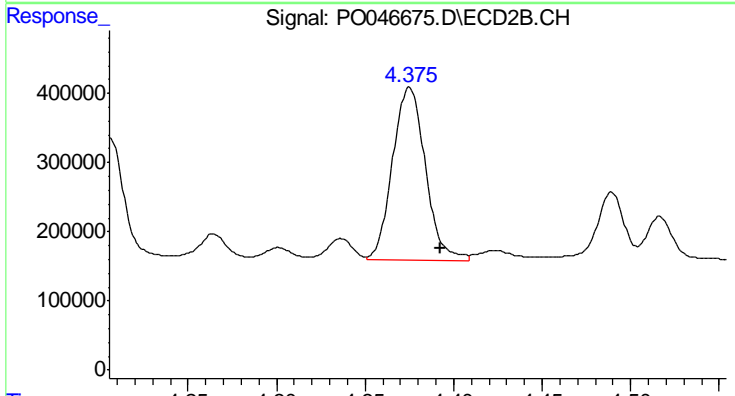
R.T.: 8.451 min
 Delta R.T.: -0.022 min
 Response: 9752459
 Conc: 50.28 ng/ml



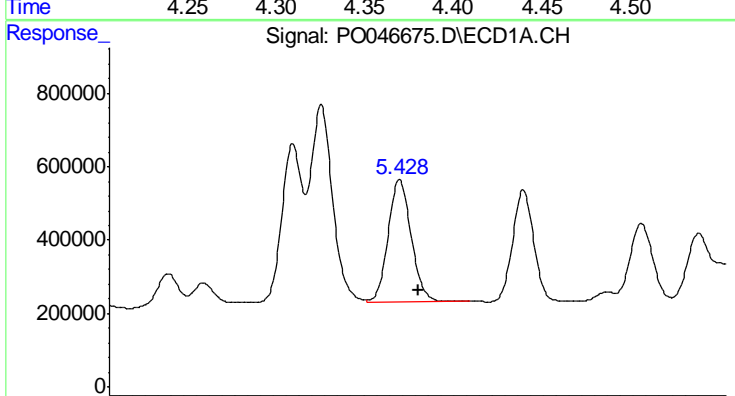
#3 AR-1016-1
 R.T.: 5.082 min
 Delta R.T.: -0.014 min
 Response: 3119466
 Conc: 553.00 ng/ml

Instrument :
 ECD_O
ClientSampled :
 AR1660CCC500

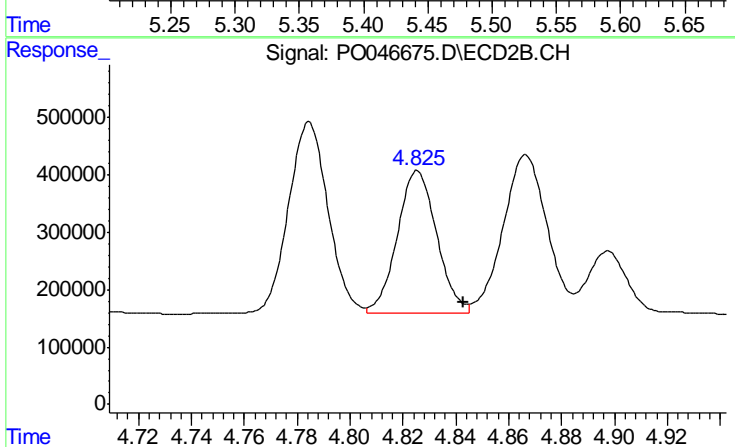
Manual Integrations
APPROVED
 Sohil
 7/13/2018 2:38:27 PM
 7/13/2018 2:38:27 PM



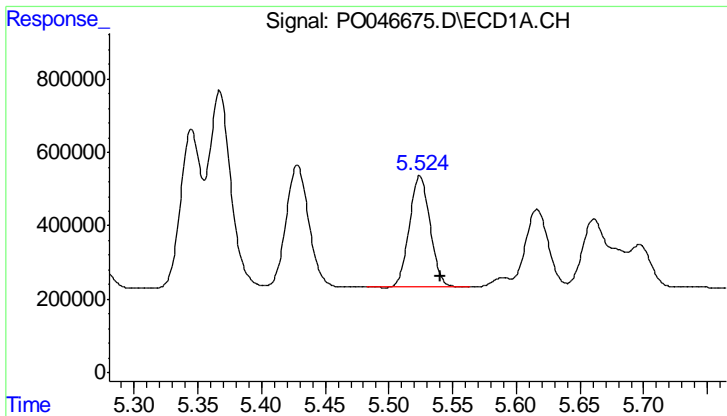
#3 AR-1016-1
 R.T.: 4.375 min
 Delta R.T.: -0.017 min
 Response: 3235688
 Conc: 592.70 ng/ml



#4 AR-1016-2
 R.T.: 5.428 min
 Delta R.T.: -0.015 min
 Response: 4152066
 Conc: 580.14 ng/ml



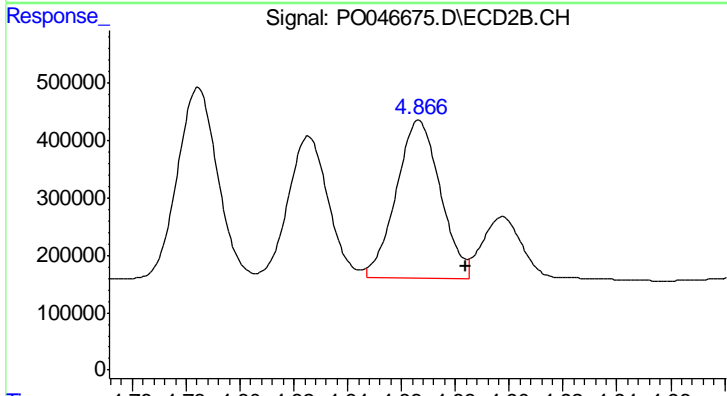
#4 AR-1016-2
 R.T.: 4.826 min
 Delta R.T.: -0.017 min
 Response: 2589881
 Conc: 534.12 ng/ml



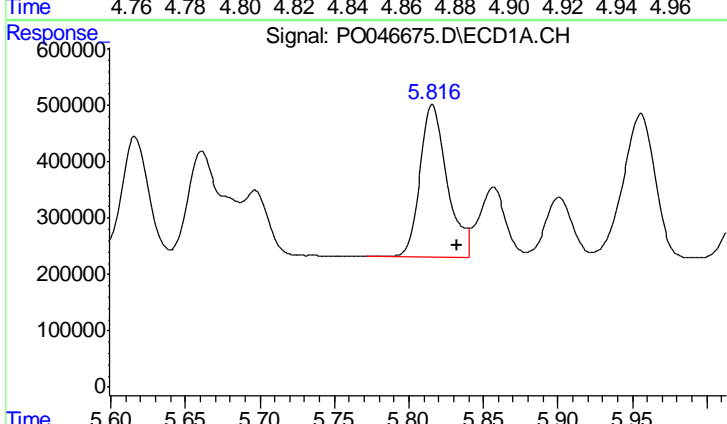
#5 AR-1016-3
 R.T.: 5.524 min
 Delta R.T.: -0.016 min
 Response: 3426118
 Conc: 570.00 ng/ml

Instrument :
 ECD_O
ClientSampled :
 AR1660CCC500

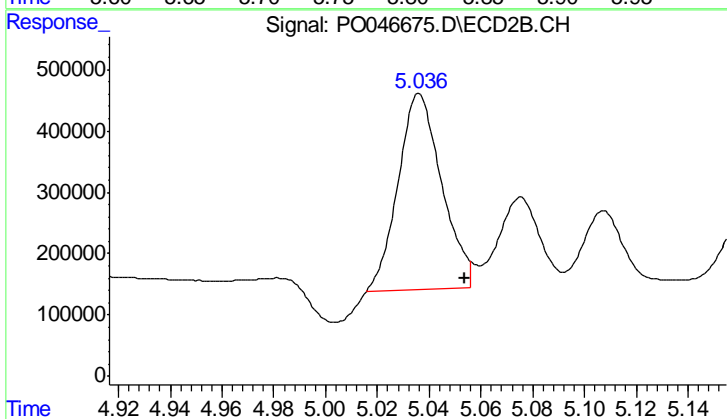
Manual Integrations
APPROVED
 Sohil
 7/13/2018 2:38:27 PM
 7/13/2018 2:38:27 PM



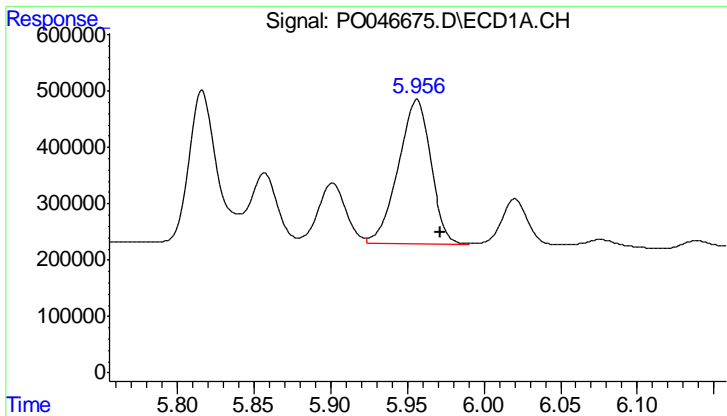
#5 AR-1016-3
 R.T.: 4.866 min
 Delta R.T.: -0.018 min
 Response: 3146773
 Conc: 540.06 ng/ml m



#6 AR-1016-4
 R.T.: 5.816 min
 Delta R.T.: -0.016 min
 Response: 3410778
 Conc: 584.81 ng/ml



#6 AR-1016-4
 R.T.: 5.036 min
 Delta R.T.: -0.018 min
 Response: 3761652
 Conc: 592.14 ng/ml m



#7 AR-1016-5

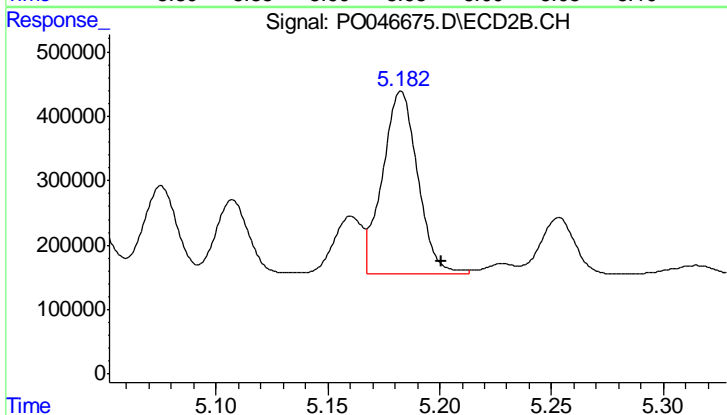
R.T.: 5.956 min
 Delta R.T.: -0.016 min
 Response: 3829278
 Conc: 588.75 ng/ml

Instrument :
 ECD_O
 ClientSampled :
 AR1660CCC500

Manual Integrations
 APPROVED

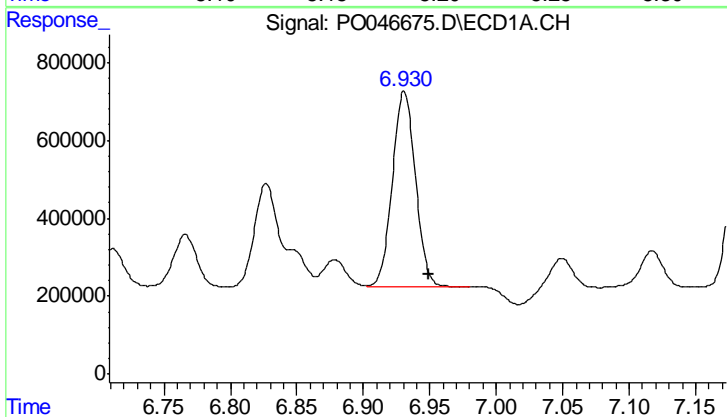
Sohil
 7/13/2018 2:38:27 PM

7/13/2018 2:38:27 PM



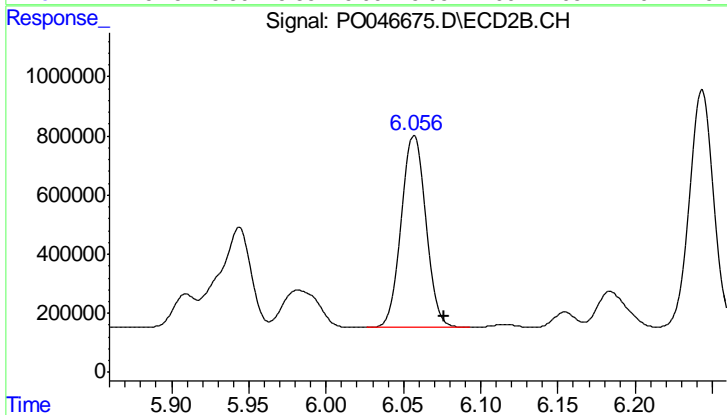
#7 AR-1016-5

R.T.: 5.183 min
 Delta R.T.: -0.018 min
 Response: 3106271
 Conc: 563.67 ng/ml



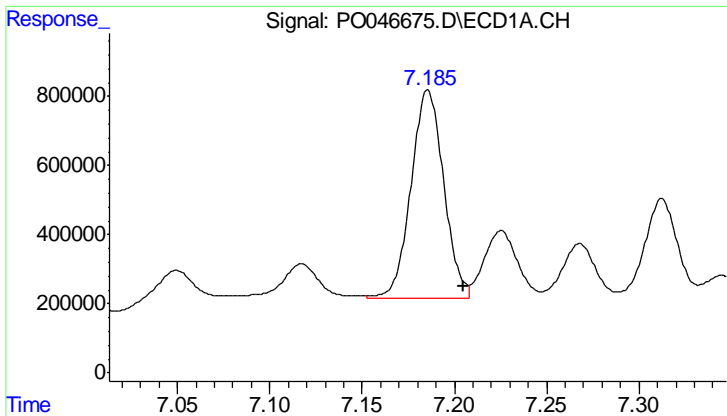
#31 AR-1260-1

R.T.: 6.931 min
 Delta R.T.: -0.019 min
 Response: 6069848
 Conc: 528.48 ng/ml



#31 AR-1260-1

R.T.: 6.057 min
 Delta R.T.: -0.019 min
 Response: 6991615
 Conc: 535.99 ng/ml



#32 AR-1260-2

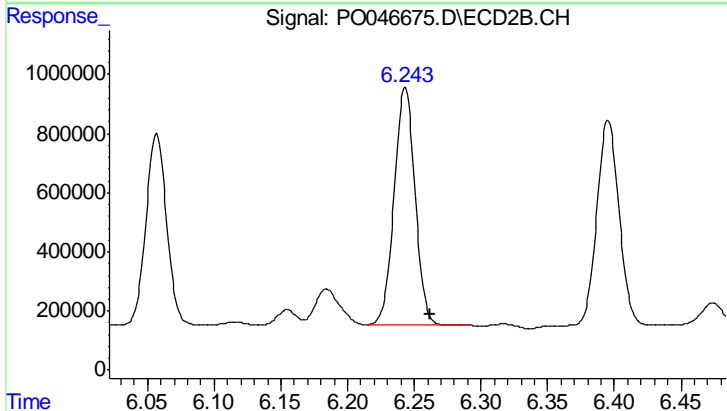
R.T.: 7.186 min
 Delta R.T.: -0.019 min
 Response: 7403922
 Conc: 548.46 ng/ml

Instrument :
 ECD_O
 ClientSampleId :
 AR1660CCC500

Manual Integrations
 APPROVED

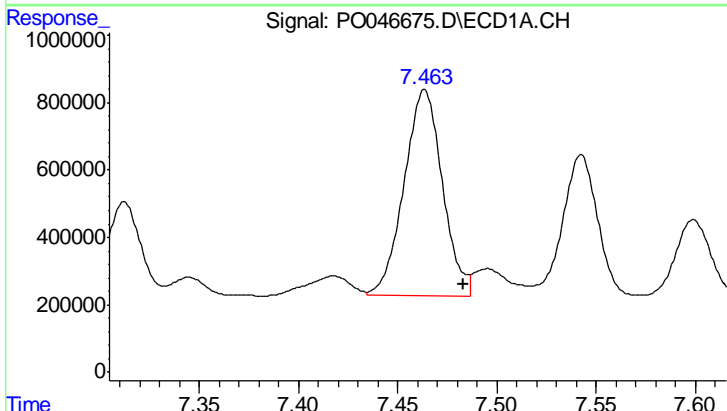
Sohil
 7/13/2018 2:38:27 PM

7/13/2018 2:38:27 PM



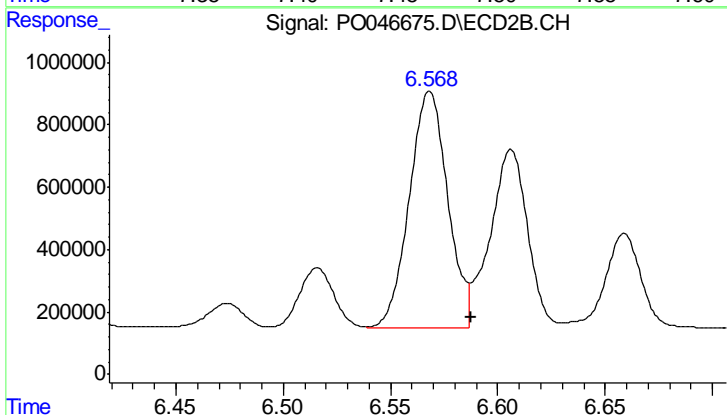
#32 AR-1260-2

R.T.: 6.243 min
 Delta R.T.: -0.019 min
 Response: 8803975
 Conc: 552.13 ng/ml



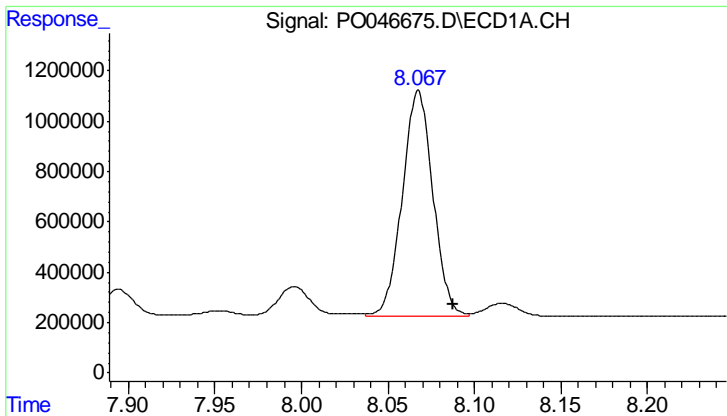
#33 AR-1260-3

R.T.: 7.463 min
 Delta R.T.: -0.020 min
 Response: 8193845
 Conc: 506.44 ng/ml m



#33 AR-1260-3

R.T.: 6.568 min
 Delta R.T.: -0.020 min
 Response: 9581868
 Conc: 534.32 ng/ml m



#34 AR-1260-4

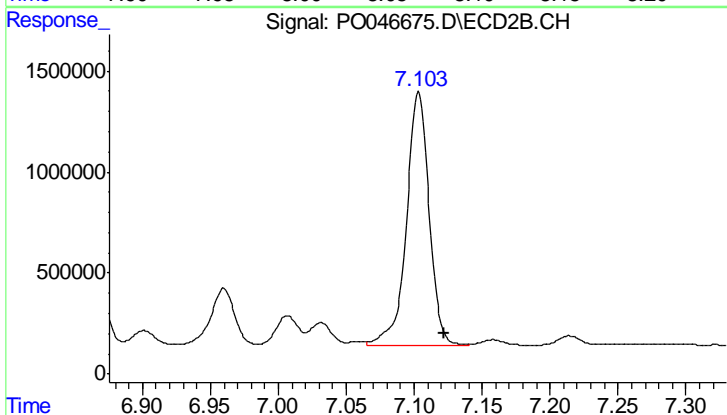
R.T.: 8.068 min
 Delta R.T.: -0.020 min
 Response: 11005871
 Conc: 523.49 ng/ml

Instrument :
 ECD_O
 ClientSampled :
 AR1660CCC500

Manual Integrations
 APPROVED

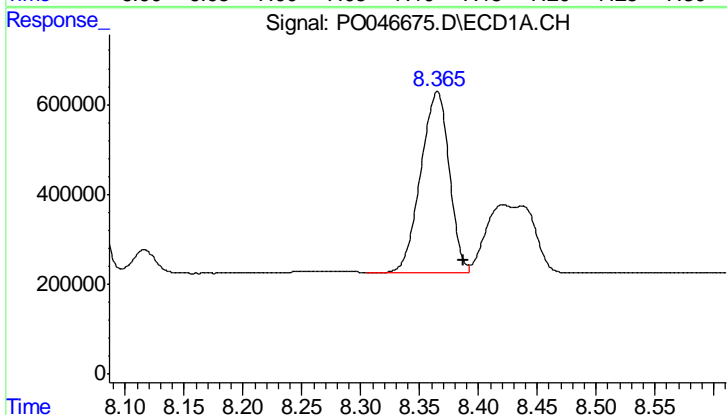
Sohil
 7/13/2018 2:38:27 PM

7/13/2018 2:38:27 PM



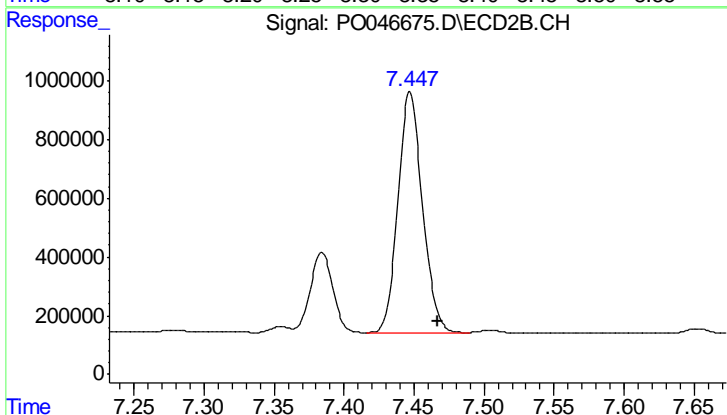
#34 AR-1260-4

R.T.: 7.103 min
 Delta R.T.: -0.019 min
 Response: 14518313
 Conc: 522.57 ng/ml



#35 AR-1260-5

R.T.: 8.365 min
 Delta R.T.: -0.022 min
 Response: 6765697
 Conc: 501.65 ng/ml



#35 AR-1260-5

R.T.: 7.447 min
 Delta R.T.: -0.020 min
 Response: 10019949
 Conc: 521.55 ng/ml