

Data Path : Z:\pestpcbsrv\HPCHEM1\ECD_0\Data\P0071221\
 Data File : P0079485.D
 Signal(s) : Signal #1: ECD1A.CH Signal #2: ECD2B.CH
 Acq On : 12 Jul 2021 10:58
 Operator : DD\AJ
 Sample : M2983-05DL 5X
 Misc :
 ALS Vial : 7 Sample Multiplier: 1

Instrument :
 ECD_0
ClientSampled :
 506DL

Manual Integrations
APPROVED
 mohammad
 7/13/2021 10:43:56 AM

Integration File signal 1: autoint1.e
 Integration File signal 2: autoint2.e
 Quant Time: Jul 13 06:52:12 2021
 Quant Method : Z:\pestpcbsrv\HPCHEM1\ECD_0\methods\P0070821.M
 Quant Title : GC EXTRACTABLES
 QLast Update : Sat Jul 10 00:52:22 2021
 Response via : Initial Calibration
 Integrator: ChemStation 6890 Scale Mode: Small noise peaks clipped

Volume Inj. : 2 µl
 Signal #1 Phase : ZB-MR1 Signal #2 Phase: ZB-MR2
 Signal #1 Info : 30Mx0.32mmx 0.50µ Signal #2 Info : 30M x 0.32mm x 0.25µm

Compound	RT#1	RT#2	Resp#1	Resp#2	ng/ml	ng/ml

System Monitoring Compounds						
1) SA Tetrachlo...	5.017	4.226	171823	100848	2.570m	3.517m#
2) SA Decachlor...	11.141	9.675	158718	74090	3.121	2.799
Target Compounds						
16) L4 AR-1242-1	6.348	5.507	629605	278649	348.521	312.210
17) L4 AR-1242-2	6.372	5.527	1572719	432528	627.753m	366.060m#
18) L4 AR-1242-3	6.438	5.725	655808	286390	425.505m	449.668
19) L4 AR-1242-4	6.548	5.820	962136	248125	780.603	388.680 #
20) L4 AR-1242-5	7.333	6.396	549334	343444	417.559	440.264

(f)=RT Delta > 1/2 Window (#)=Amounts differ by > 25% (m)=manual int.

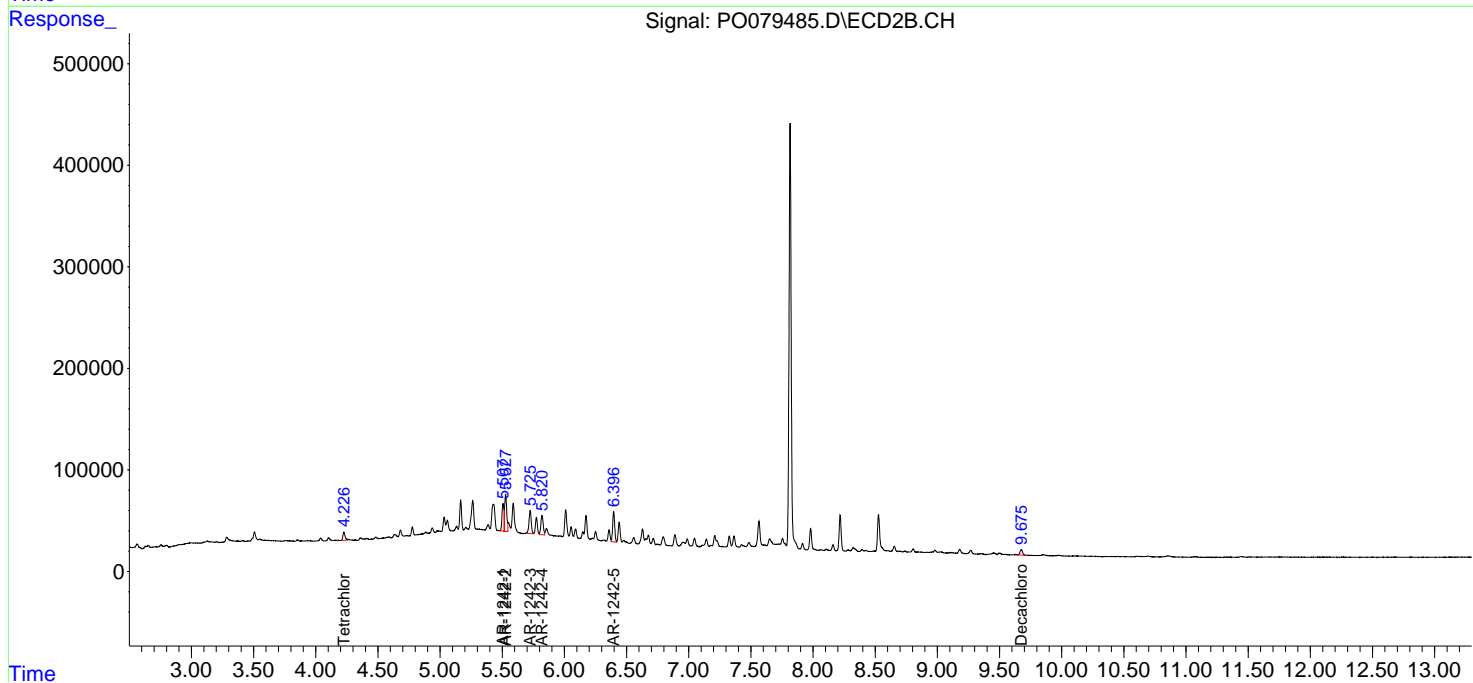
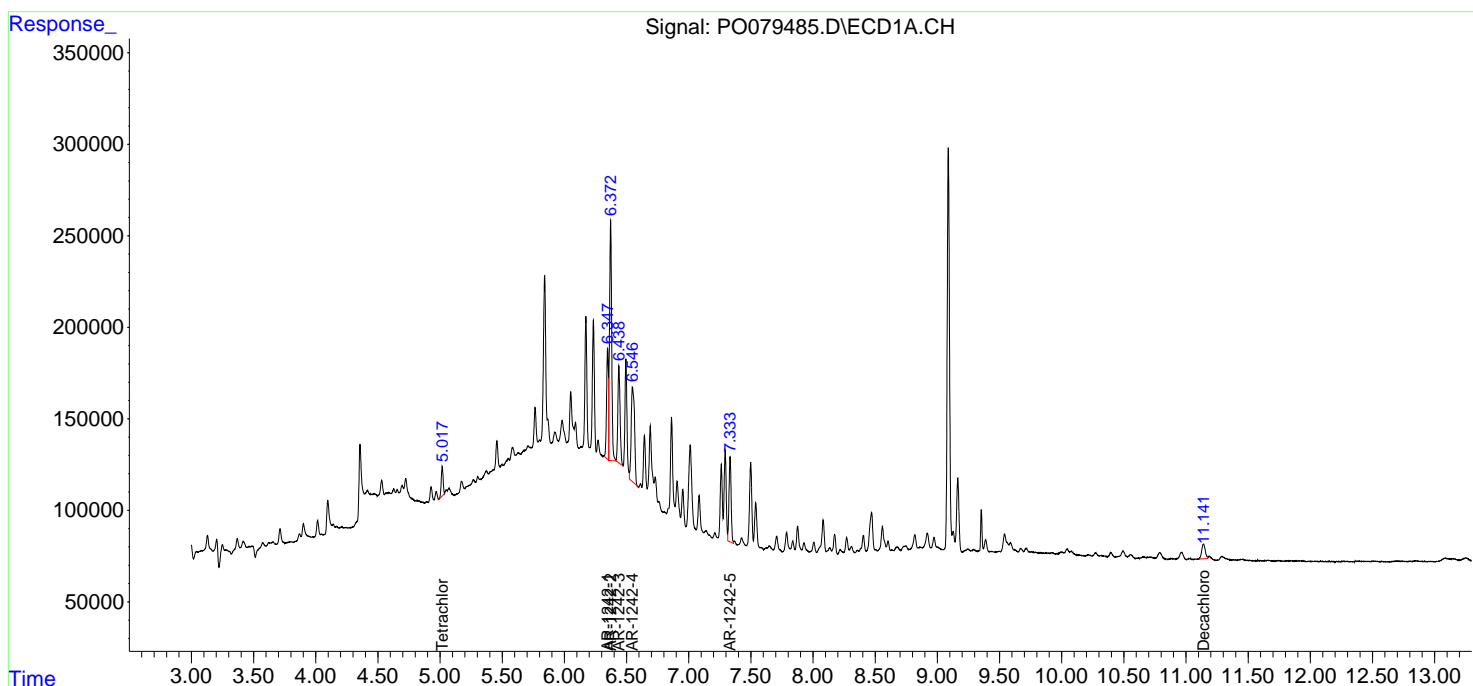
Data Path : Z:\pestpcbsrv\HPCHEM1\ECD_0\Data\P0071221\
 Data File : P0079485.D
 Signal(s) : Signal #1: ECD1A.CH Signal #2: ECD2B.CH
 Acq On : 12 Jul 2021 10:58
 Operator : DD\AJ
 Sample : M2983-05DL 5X
 Misc :
 ALS Vial : 7 Sample Multiplier: 1

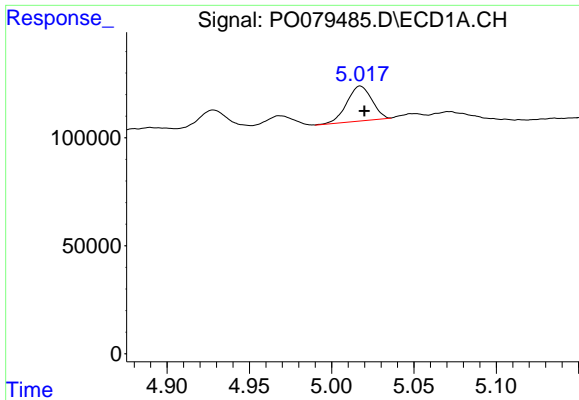
Instrument :
 ECD_O
 ClientSampled :
 506DL

Manual Integrations
APPROVED
 mohammad
 7/13/2021 10:43:56 AM

Integration File signal 1: autoint1.e
 Integration File signal 2: autoint2.e
 Quant Time: Jul 13 06:52:12 2021
 Quant Method : Z:\pestpcbsrv\HPCHEM1\ECD_0\methods\P0070821.M
 Quant Title : GC EXTRACTABLES
 QLast Update : Sat Jul 10 00:52:22 2021
 Response via : Initial Calibration
 Integrator: ChemStation 6890 Scale Mode: Small noise peaks clipped

Volume Inj. : 2 µl
 Signal #1 Phase : ZB-MR1 Signal #2 Phase: ZB-MR2
 Signal #1 Info : 30Mx0.32mmx 0.50µ Signal #2 Info : 30M x 0.32mm x 0.25µm

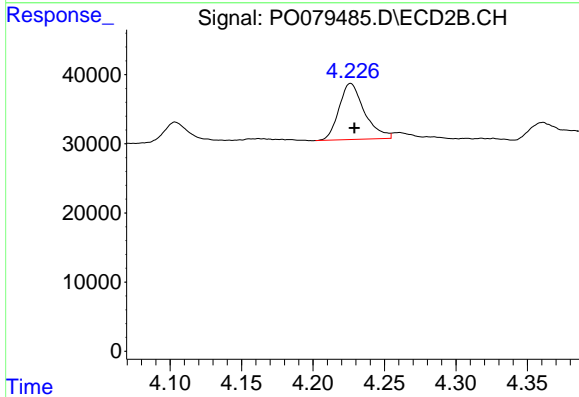




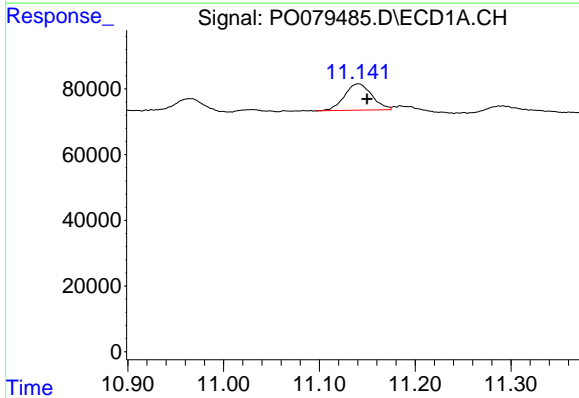
#1 Tetrachloro-m-xylene
 R.T.: 5.017 min
 Delta R.T.: -0.003 min
 Response: 171823
 Conc: 2.57 ng/ml m

Instrument :
 ECD_O
 ClientSampled :
 506DL

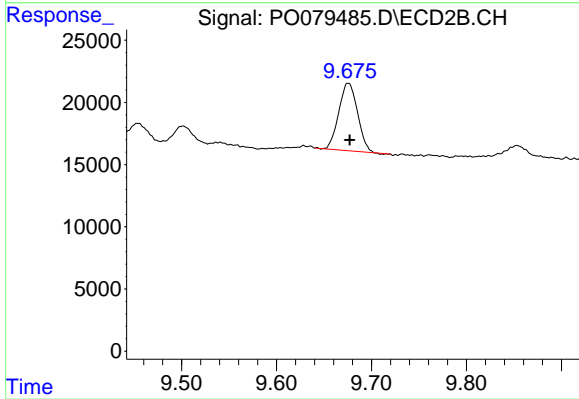
Manual Integrations
 APPROVED
 mohammad
 7/13/2021 10:43:56 AM



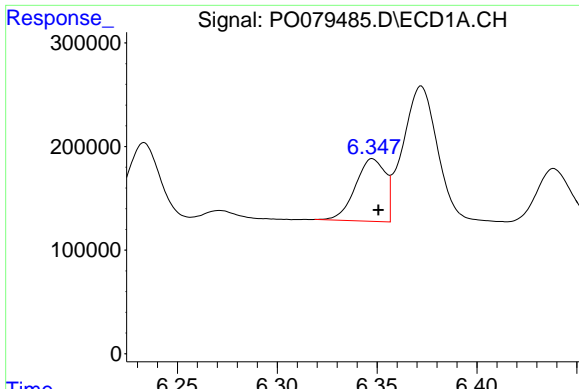
#1 Tetrachloro-m-xylene
 R.T.: 4.226 min
 Delta R.T.: -0.003 min
 Response: 100848
 Conc: 3.52 ng/ml m



#2 Decachlorobiphenyl
 R.T.: 11.141 min
 Delta R.T.: -0.009 min
 Response: 158718
 Conc: 3.12 ng/ml



#2 Decachlorobiphenyl
 R.T.: 9.675 min
 Delta R.T.: -0.002 min
 Response: 74090
 Conc: 2.80 ng/ml

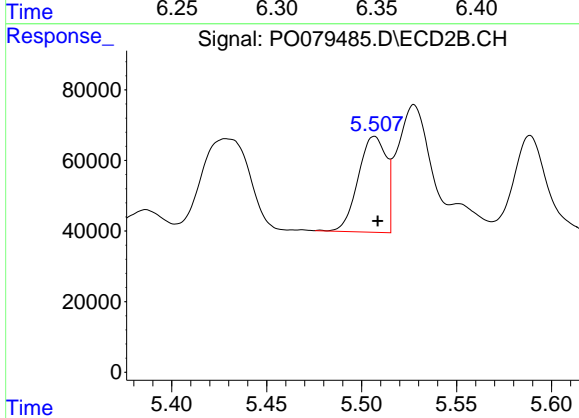


#16 AR-1242-1

R.T.: 6.348 min
 Delta R.T.: -0.003 min
 Response: 629605
 Conc: 348.52 ng/ml

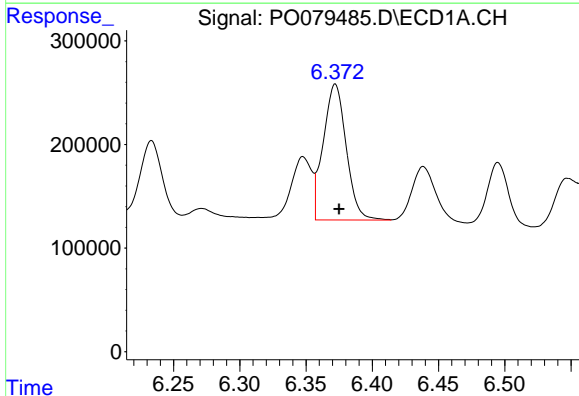
Instrument :
 ECD_O
ClientSampled :
 506DL

Manual Integrations
APPROVED
 mohammad
 7/13/2021 10:43:56 AM



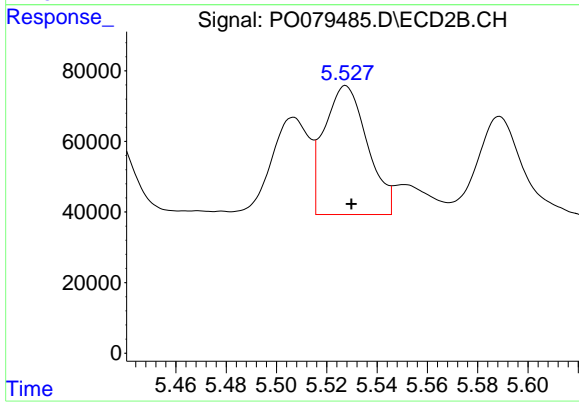
#16 AR-1242-1

R.T.: 5.507 min
 Delta R.T.: -0.002 min
 Response: 278649
 Conc: 312.21 ng/ml



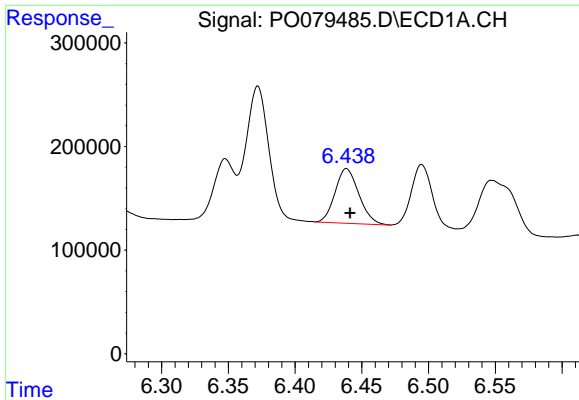
#17 AR-1242-2

R.T.: 6.372 min
 Delta R.T.: -0.003 min
 Response: 1572719
 Conc: 627.75 ng/ml m



#17 AR-1242-2

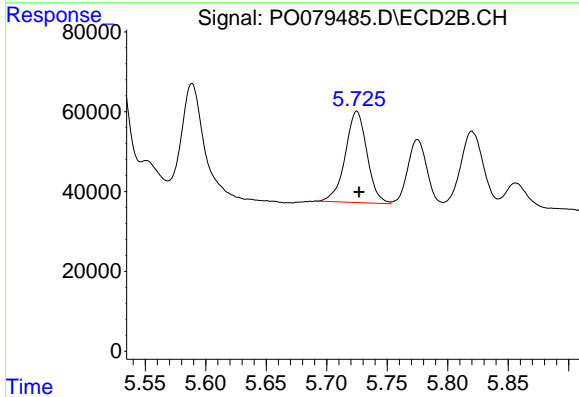
R.T.: 5.527 min
 Delta R.T.: -0.003 min
 Response: 432528
 Conc: 366.06 ng/ml m



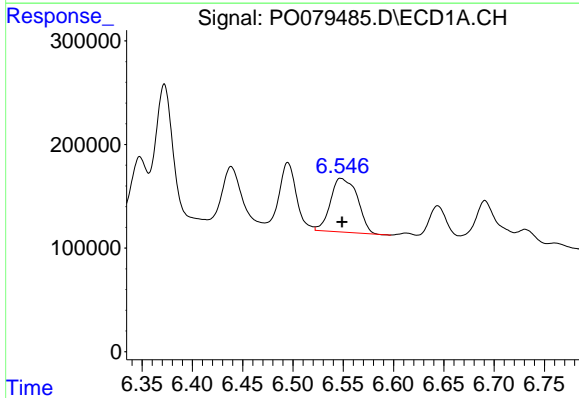
#18 AR-1242-3
 R.T.: 6.438 min
 Delta R.T.: -0.003 min
 Response: 655808
 Conc: 425.50 ng/ml m

Instrument :
 ECD_O
ClientSampled :
 506DL

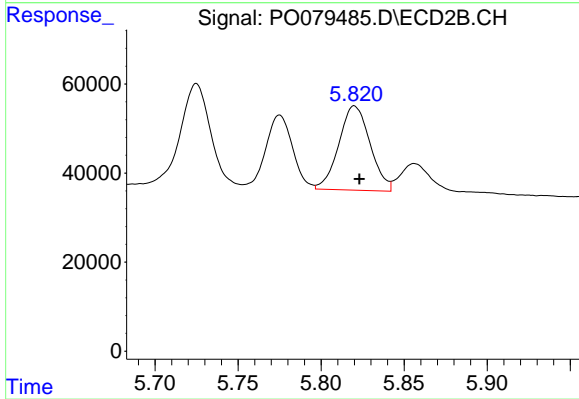
Manual Integrations
APPROVED
 mohammad
 7/13/2021 10:43:56 AM



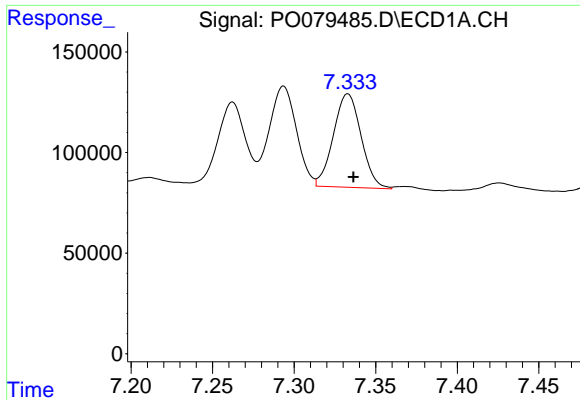
#18 AR-1242-3
 R.T.: 5.725 min
 Delta R.T.: -0.002 min
 Response: 286390
 Conc: 449.67 ng/ml



#19 AR-1242-4
 R.T.: 6.548 min
 Delta R.T.: -0.001 min
 Response: 962136
 Conc: 780.60 ng/ml



#19 AR-1242-4
 R.T.: 5.820 min
 Delta R.T.: -0.003 min
 Response: 248125
 Conc: 388.68 ng/ml



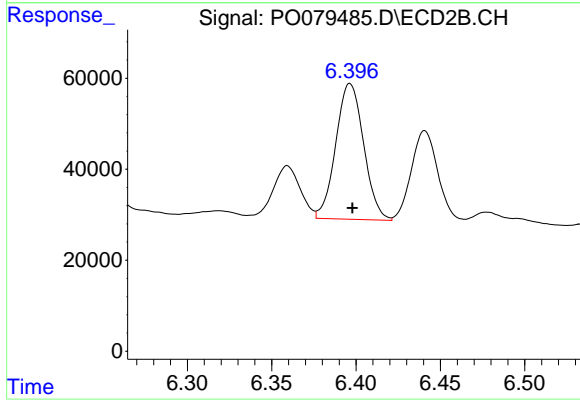
#20 AR-1242-5

R.T.: 7.333 min
Delta R.T.: -0.004 min
Response: 549334
Conc: 417.56 ng/ml

Instrument :
ECD_O
ClientSampled :
506DL

Manual Integrations
APPROVED

mohammad
7/13/2021 10:43:56 AM



#20 AR-1242-5

R.T.: 6.396 min
Delta R.T.: -0.001 min
Response: 343444
Conc: 440.26 ng/ml