

Data Path : Z:\pestpcbsrv\HPCHEM1\ECD\_0\Data\P0071221\  
 Data File : P0079487.D  
 Signal(s) : Signal #1: ECD1A.CH Signal #2: ECD2B.CH  
 Acq On : 12 Jul 2021 11:32  
 Operator : DD\AJ  
 Sample : AR1242CCC500  
 Misc :  
 ALS Vial : 4 Sample Multiplier: 1

Instrument :  
 ECD\_0  
 ClientSampleId :  
 AR1242CCC500

Integration File signal 1: autoint1.e  
 Integration File signal 2: autoint2.e  
 Quant Time: Jul 13 06:53:15 2021  
 Quant Method : Z:\pestpcbsrv\HPCHEM1\ECD\_0\methods\P0070821.M  
 Quant Title : GC EXTRACTABLES  
 QLast Update : Sat Jul 10 00:52:22 2021  
 Response via : Initial Calibration  
 Integrator: ChemStation 6890 Scale Mode: Small noise peaks clipped

Volume Inj. : 2 µl  
 Signal #1 Phase : ZB-MR1 Signal #2 Phase: ZB-MR2  
 Signal #1 Info : 30Mx0.32mmx 0.50µ Signal #2 Info : 30M x 0.32mm x 0.25µm

Compound	RT#1	RT#2	Resp#1	Resp#2	ng/ml	ng/ml
-----						
System Monitoring Compounds						
1) SA Tetrachlo...	5.018	4.226	3555894	1364157	53.185	47.570
2) SA Decachlor...	11.141	9.675	2669715	1244838	52.491	47.037
Target Compounds						
16) L4 AR-1242-1	6.348	5.507	939981	410806	520.330	460.284
17) L4 AR-1242-2	6.372	5.528	1298904	549472	518.459	465.033
18) L4 AR-1242-3	6.438	5.724	811070	294843	526.243	462.940
19) L4 AR-1242-4	6.546	5.821	664671	302320	539.263	473.574
20) L4 AR-1242-5	7.333	6.395	654150	372151	497.231	477.065
-----						

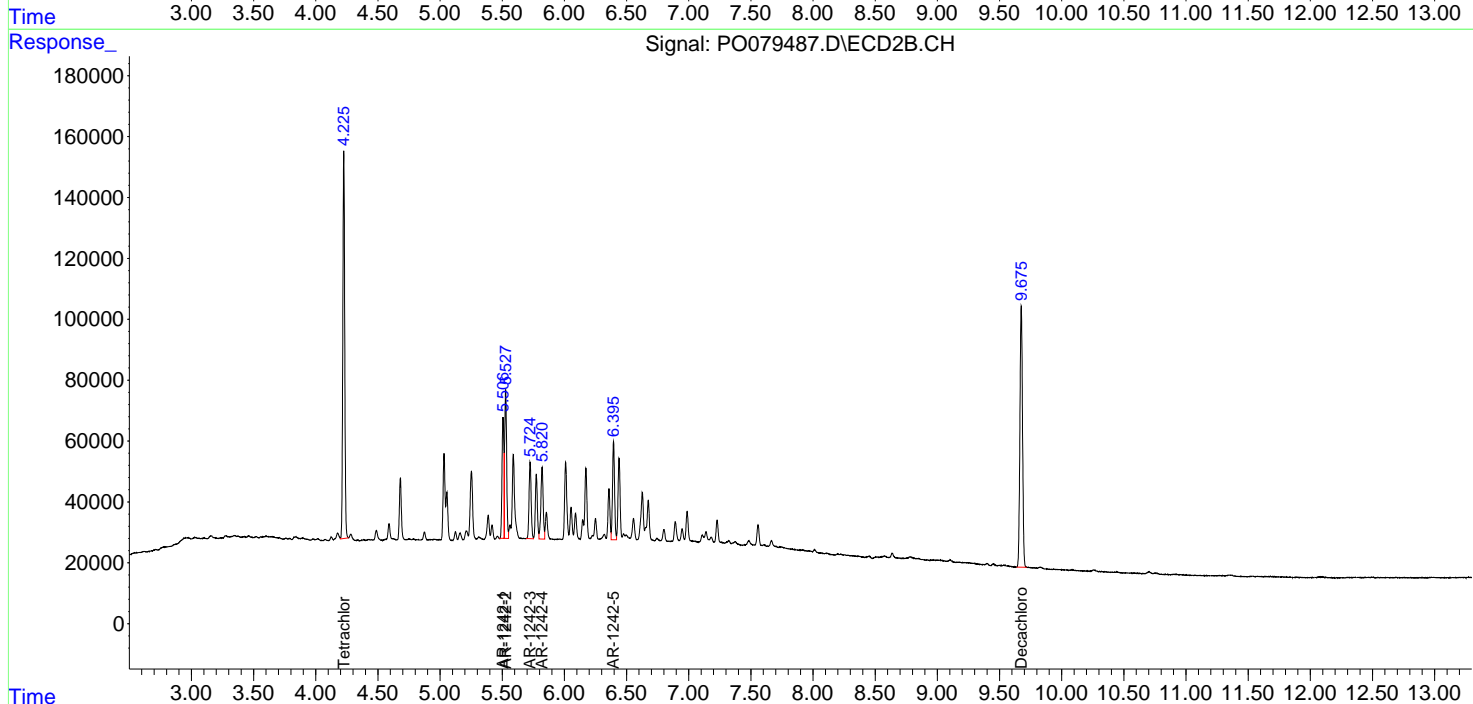
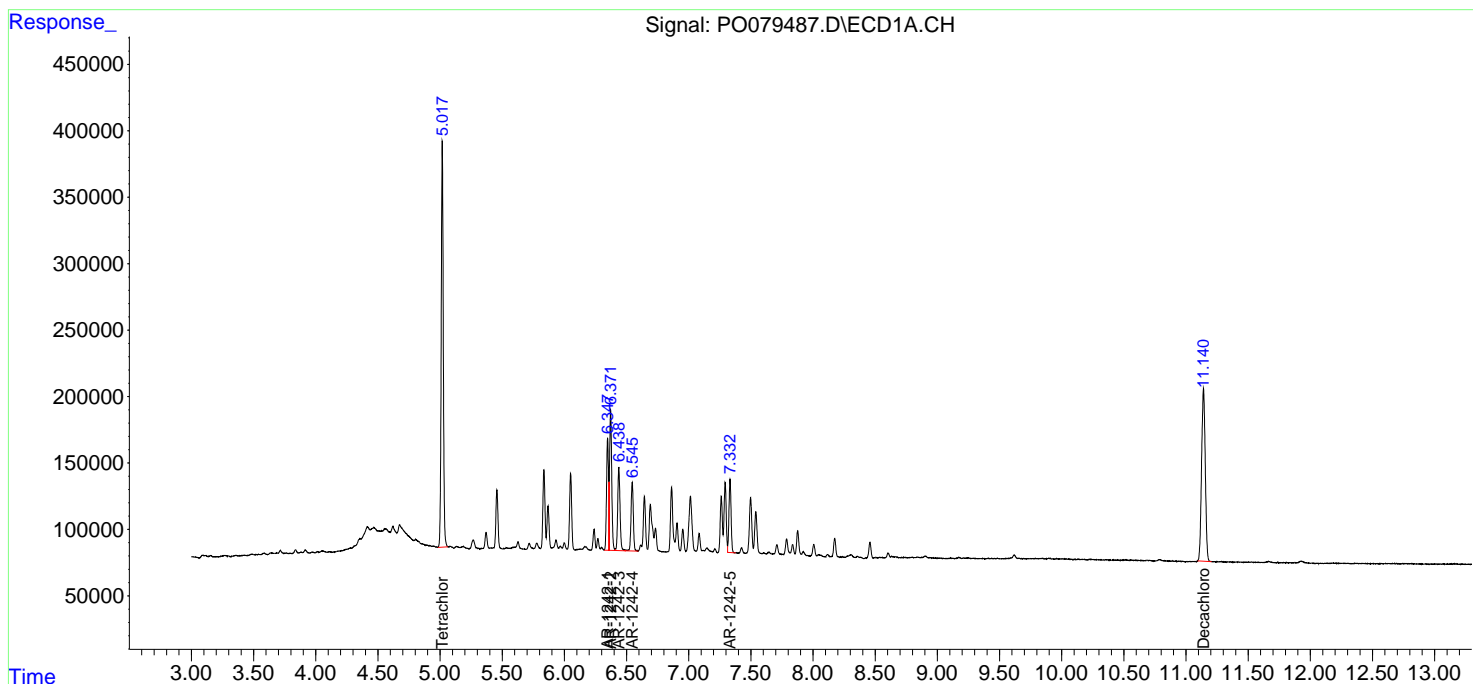
(f)=RT Delta > 1/2 Window (#)=Amounts differ by > 25% (m)=manual int.

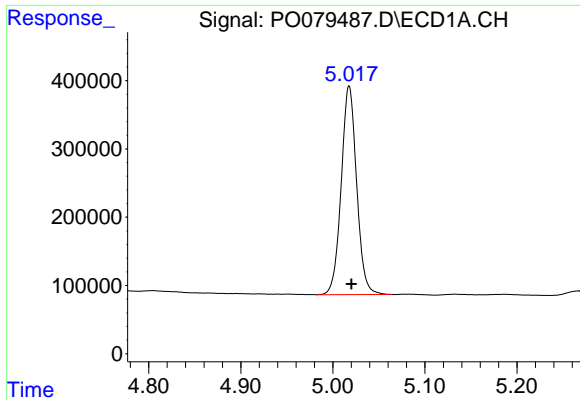
Data Path : Z:\pestpcbsrv\HPCHEM1\ECD\_0\Data\P0071221\  
 Data File : P0079487.D  
 Signal(s) : Signal #1: ECD1A.CH Signal #2: ECD2B.CH  
 Acq On : 12 Jul 2021 11:32  
 Operator : DD\AJ  
 Sample : AR1242CCC500  
 Misc :  
 ALS Vial : 4 Sample Multiplier: 1

Instrument :  
 ECD\_0  
 ClientSampleId :  
 AR1242CCC500

Integration File signal 1: autoint1.e  
 Integration File signal 2: autoint2.e  
 Quant Time: Jul 13 06:53:15 2021  
 Quant Method : Z:\pestpcbsrv\HPCHEM1\ECD\_0\methods\P0070821.M  
 Quant Title : GC EXTRACTABLES  
 QLast Update : Sat Jul 10 00:52:22 2021  
 Response via : Initial Calibration  
 Integrator: ChemStation 6890 Scale Mode: Small noise peaks clipped

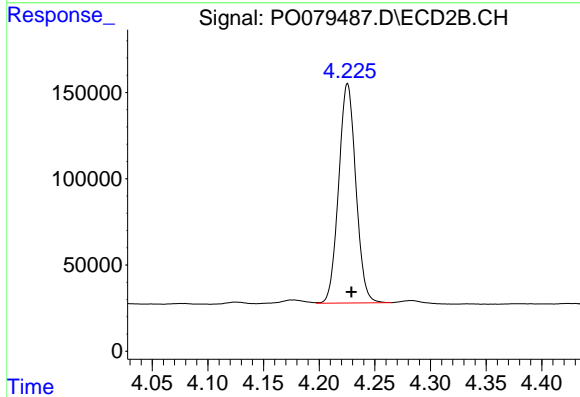
Volume Inj. : 2 µl  
 Signal #1 Phase : ZB-MR1 Signal #2 Phase: ZB-MR2  
 Signal #1 Info : 30Mx0.32mmx 0.50µ Signal #2 Info : 30M x 0.32mm x 0.25µm



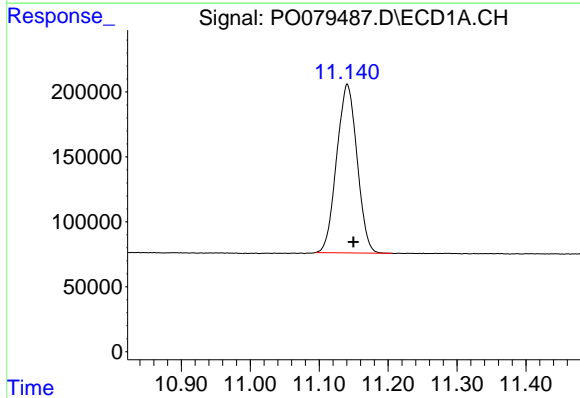


#1 Tetrachloro-m-xylene  
 R.T.: 5.018 min  
 Delta R.T.: -0.002 min  
 Response: 3555894  
 Conc: 53.18 ng/ml

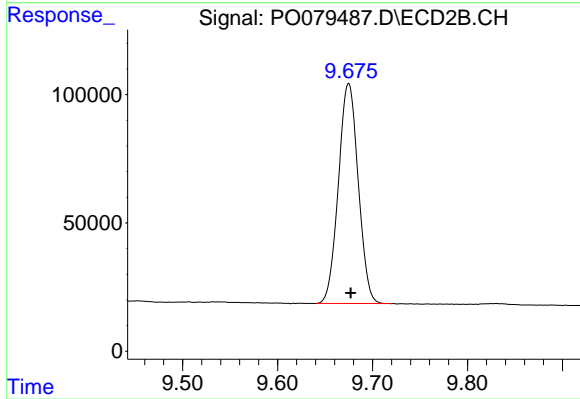
Instrument :  
 ECD\_O  
 ClientSampleId :  
 AR1242CCC500



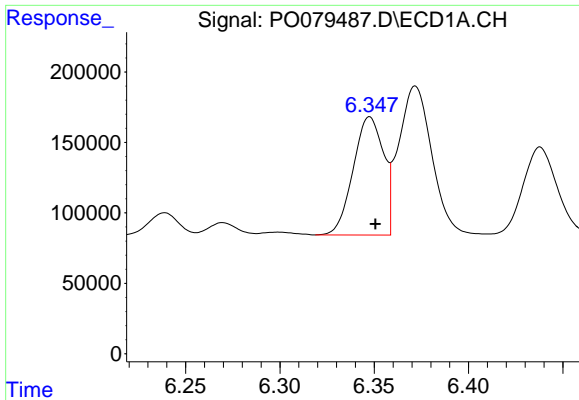
#1 Tetrachloro-m-xylene  
 R.T.: 4.226 min  
 Delta R.T.: -0.003 min  
 Response: 1364157  
 Conc: 47.57 ng/ml



#2 Decachlorobiphenyl  
 R.T.: 11.141 min  
 Delta R.T.: -0.009 min  
 Response: 2669715  
 Conc: 52.49 ng/ml



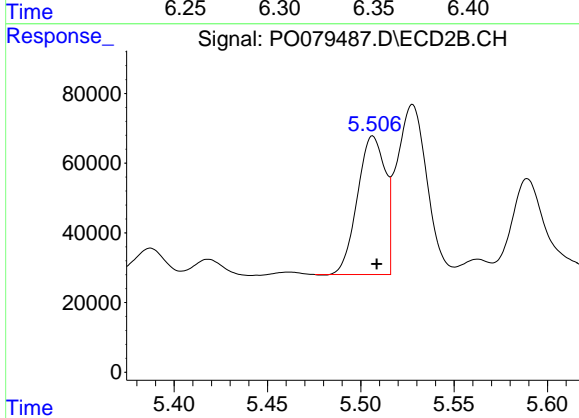
#2 Decachlorobiphenyl  
 R.T.: 9.675 min  
 Delta R.T.: -0.002 min  
 Response: 1244838  
 Conc: 47.04 ng/ml



#16 AR-1242-1

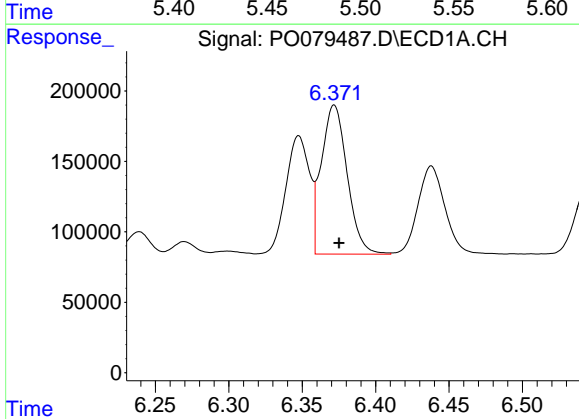
R.T.: 6.348 min  
 Delta R.T.: -0.003 min  
 Response: 939981  
 Conc: 520.33 ng/ml

Instrument :  
 ECD\_O  
 ClientSampled :  
 AR1242CCC500



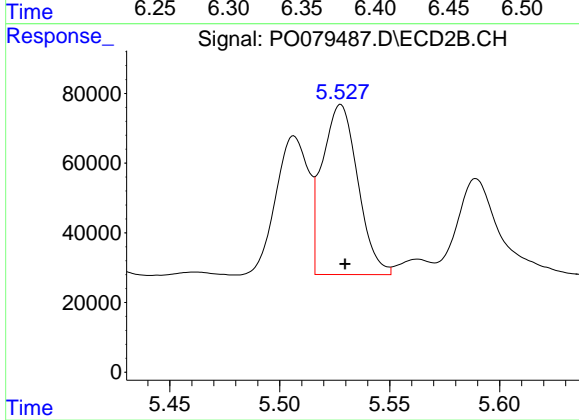
#16 AR-1242-1

R.T.: 5.507 min  
 Delta R.T.: -0.002 min  
 Response: 410806  
 Conc: 460.28 ng/ml



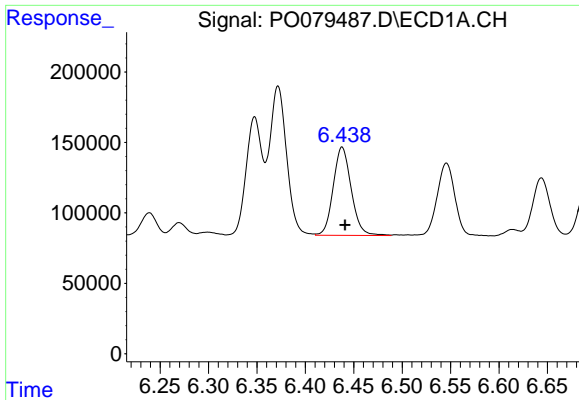
#17 AR-1242-2

R.T.: 6.372 min  
 Delta R.T.: -0.003 min  
 Response: 1298904  
 Conc: 518.46 ng/ml



#17 AR-1242-2

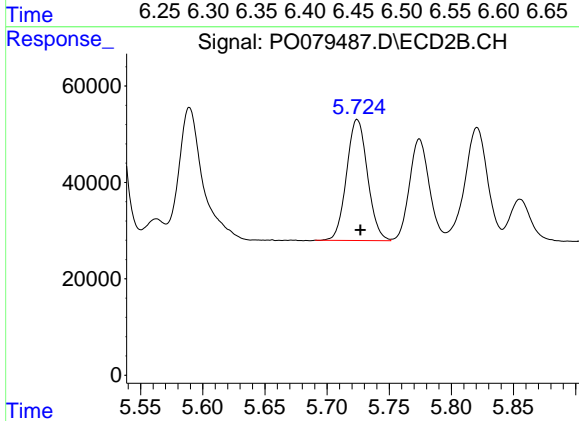
R.T.: 5.528 min  
 Delta R.T.: -0.002 min  
 Response: 549472  
 Conc: 465.03 ng/ml



#18 AR-1242-3

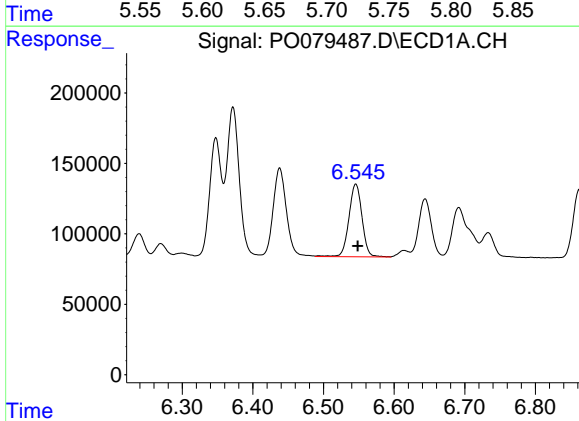
R.T.: 6.438 min  
 Delta R.T.: -0.003 min  
 Response: 811070  
 Conc: 526.24 ng/ml

Instrument :  
 ECD\_O  
 ClientSampleId :  
 AR1242CCC500



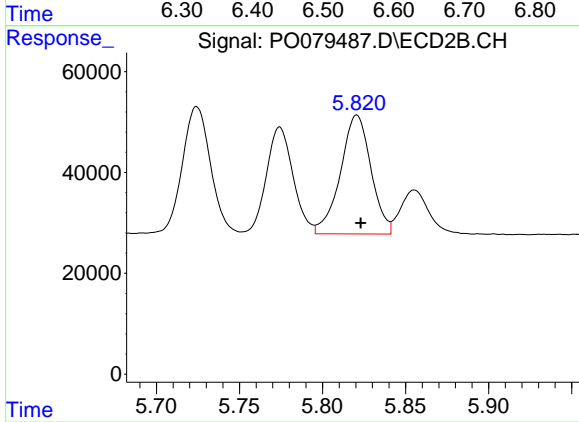
#18 AR-1242-3

R.T.: 5.724 min  
 Delta R.T.: -0.002 min  
 Response: 294843  
 Conc: 462.94 ng/ml



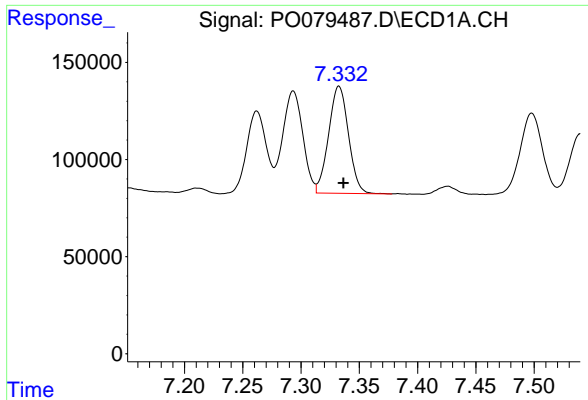
#19 AR-1242-4

R.T.: 6.546 min  
 Delta R.T.: -0.003 min  
 Response: 664671  
 Conc: 539.26 ng/ml



#19 AR-1242-4

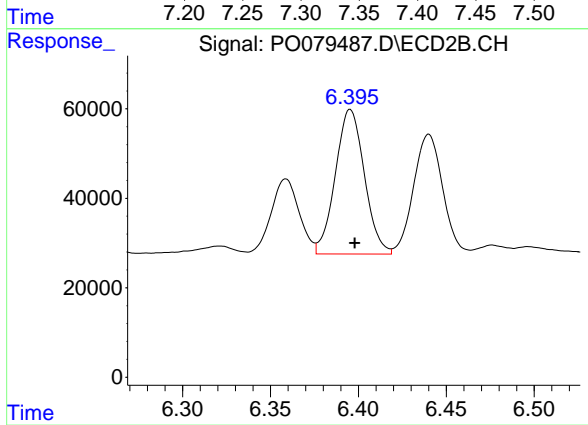
R.T.: 5.821 min  
 Delta R.T.: -0.002 min  
 Response: 302320  
 Conc: 473.57 ng/ml



#20 AR-1242-5

R.T.: 7.333 min  
Delta R.T.: -0.004 min  
Response: 654150  
Conc: 497.23 ng/ml

Instrument :  
ECD\_O  
ClientSampled :  
AR1242CCC500



#20 AR-1242-5

R.T.: 6.395 min  
Delta R.T.: -0.002 min  
Response: 372151  
Conc: 477.06 ng/ml