

Data Path : Z:\pestpcbsrv\HPCHEM1\ECD\_0\Data\P0071221\  
 Data File : P0079489.D  
 Signal(s) : Signal #1: ECD1A.CH Signal #2: ECD2B.CH  
 Acq On : 12 Jul 2021 12:07  
 Operator : DD\AJ  
 Sample : AR1254CCC500  
 Misc :  
 ALS Vial : 6 Sample Multiplier: 1

Instrument :  
 ECD\_0  
 ClientSampleId :  
 AR1254CCC500

Integration File signal 1: autoint1.e  
 Integration File signal 2: autoint2.e  
 Quant Time: Jul 13 06:54:19 2021  
 Quant Method : Z:\pestpcbsrv\HPCHEM1\ECD\_0\methods\P0070821.M  
 Quant Title : GC EXTRACTABLES  
 QLast Update : Sat Jul 10 00:52:22 2021  
 Response via : Initial Calibration  
 Integrator: ChemStation 6890 Scale Mode: Small noise peaks clipped

Volume Inj. : 2 µl  
 Signal #1 Phase : ZB-MR1 Signal #2 Phase: ZB-MR2  
 Signal #1 Info : 30Mx0.32mmx 0.50µ Signal #2 Info : 30M x 0.32mm x 0.25µm

Compound	RT#1	RT#2	Resp#1	Resp#2	ng/ml	ng/ml
-----						
System Monitoring Compounds						
1) SA Tetrachlo...	5.018	4.226	3632912	1419425	54.336	49.498
2) SA Decachlor...	11.141	9.674	2742819	1287596	53.928	48.652
Target Compounds						
26) L6 AR-1254-1	7.263	6.396	1174129	799699	508.288	475.936
27) L6 AR-1254-2	7.494	6.557	1840055	703722	511.678	475.518
28) L6 AR-1254-3	7.877	6.988	1902666	1103731	505.911	472.339
29) L6 AR-1254-4	8.174	7.229	1390260	696092	512.465	474.940
30) L6 AR-1254-5	8.604	7.667	1464712	973637	528.608	488.378
-----						

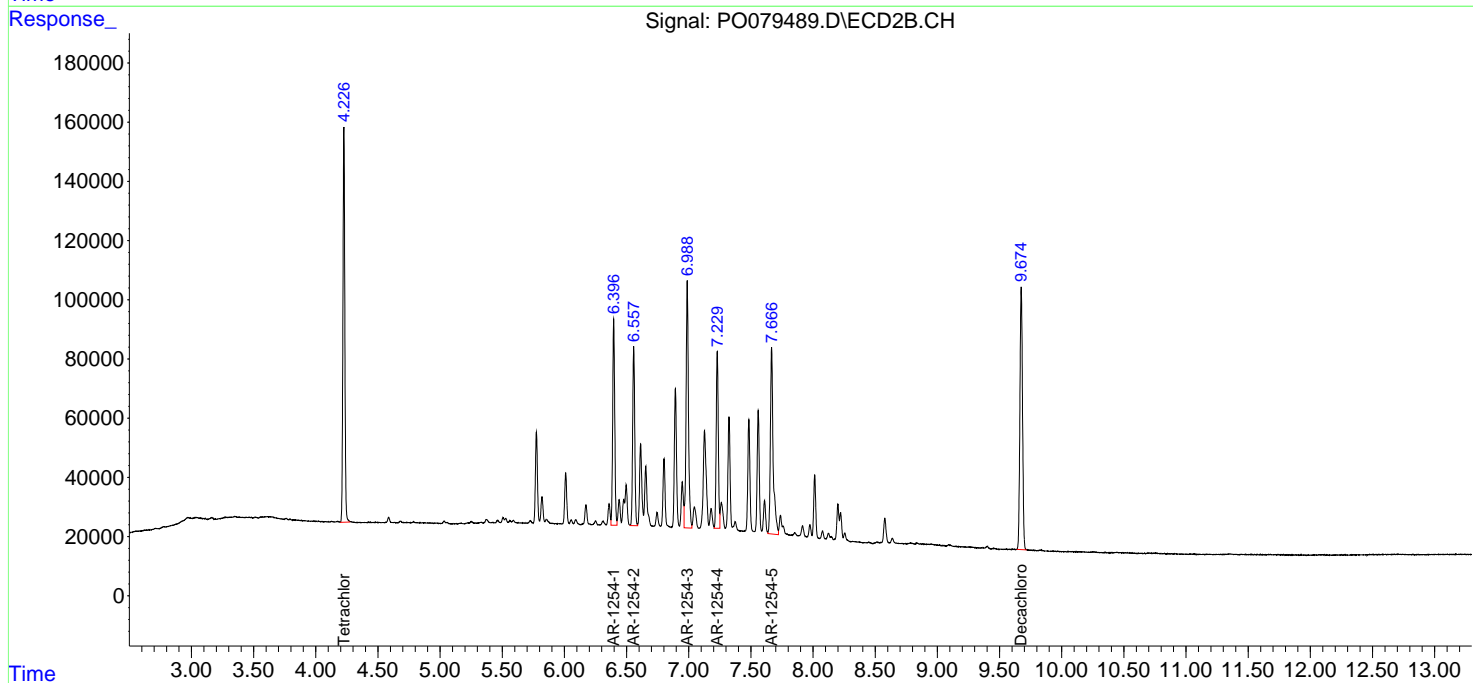
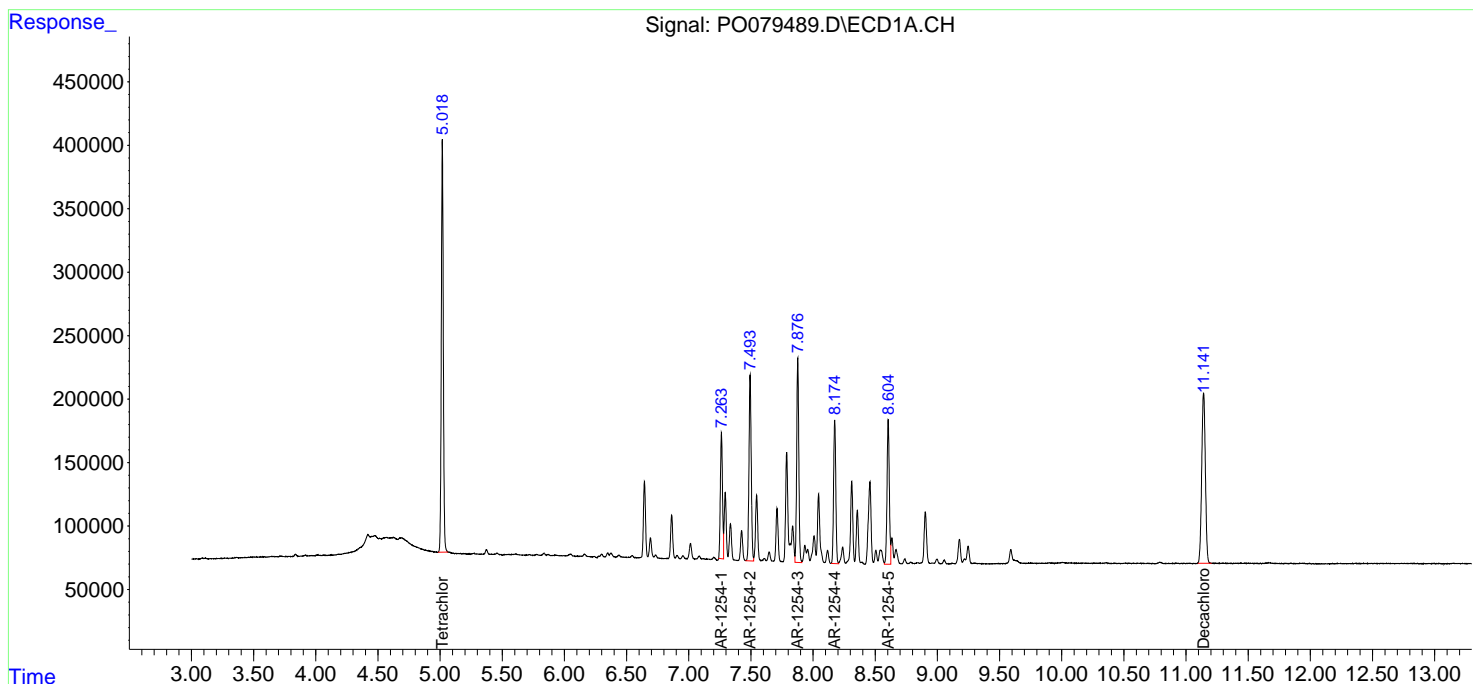
(f)=RT Delta > 1/2 Window (#)=Amounts differ by > 25% (m)=manual int.

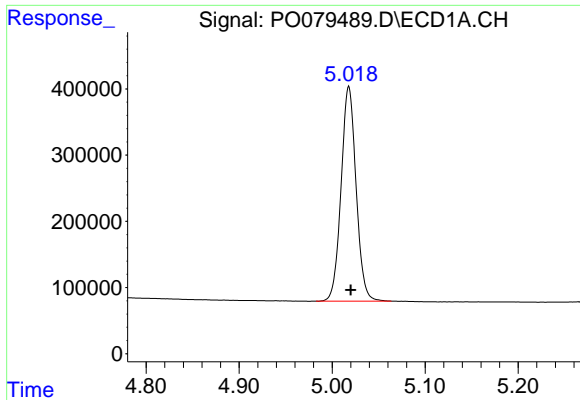
Data Path : Z:\pestpcbsrv\HPCHEM1\ECD\_0\Data\P0071221\  
 Data File : P0079489.D  
 Signal(s) : Signal #1: ECD1A.CH Signal #2: ECD2B.CH  
 Acq On : 12 Jul 2021 12:07  
 Operator : DD\AJ  
 Sample : AR1254CCC500  
 Misc :  
 ALS Vial : 6 Sample Multiplier: 1

Instrument :  
 ECD\_0  
 ClientSampled :  
 AR1254CCC500

Integration File signal 1: autoint1.e  
 Integration File signal 2: autoint2.e  
 Quant Time: Jul 13 06:54:19 2021  
 Quant Method : Z:\pestpcbsrv\HPCHEM1\ECD\_0\methods\P0070821.M  
 Quant Title : GC EXTRACTABLES  
 QLast Update : Sat Jul 10 00:52:22 2021  
 Response via : Initial Calibration  
 Integrator: ChemStation 6890 Scale Mode: Small noise peaks clipped

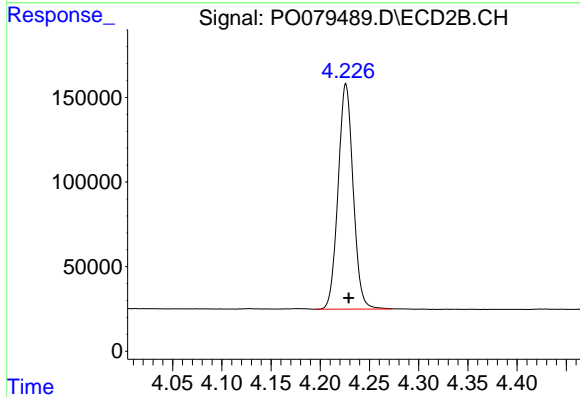
Volume Inj. : 2 µl  
 Signal #1 Phase : ZB-MR1 Signal #2 Phase: ZB-MR2  
 Signal #1 Info : 30Mx0.32mmx 0.50µ Signal #2 Info : 30M x 0.32mm x 0.25µm



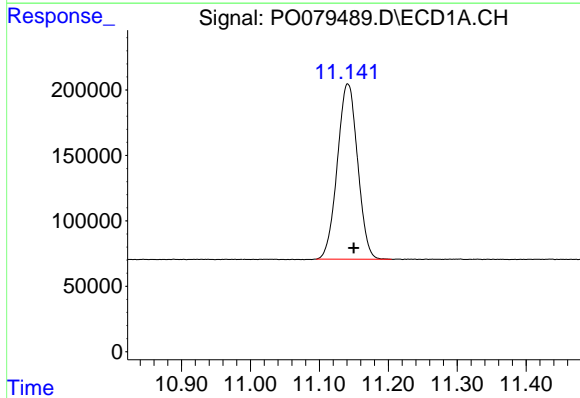


#1 Tetrachloro-m-xylene  
 R.T.: 5.018 min  
 Delta R.T.: -0.002 min  
 Response: 3632912  
 Conc: 54.34 ng/ml

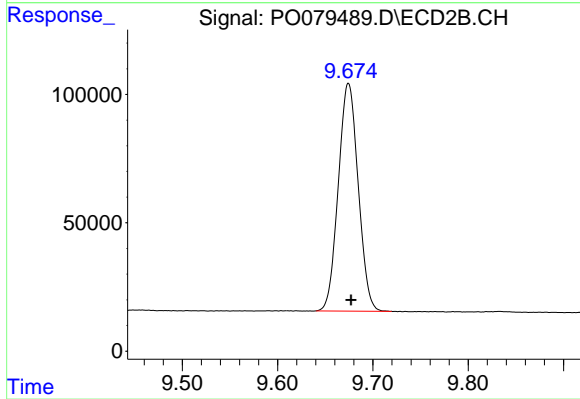
Instrument :  
 ECD\_O  
 ClientSampleId :  
 AR1254CCC500



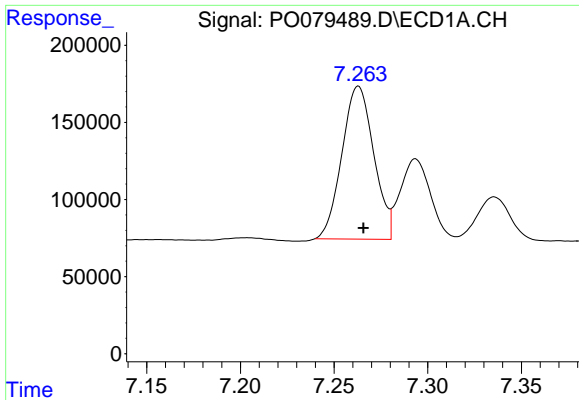
#1 Tetrachloro-m-xylene  
 R.T.: 4.226 min  
 Delta R.T.: -0.003 min  
 Response: 1419425  
 Conc: 49.50 ng/ml



#2 Decachlorobiphenyl  
 R.T.: 11.141 min  
 Delta R.T.: -0.009 min  
 Response: 2742819  
 Conc: 53.93 ng/ml



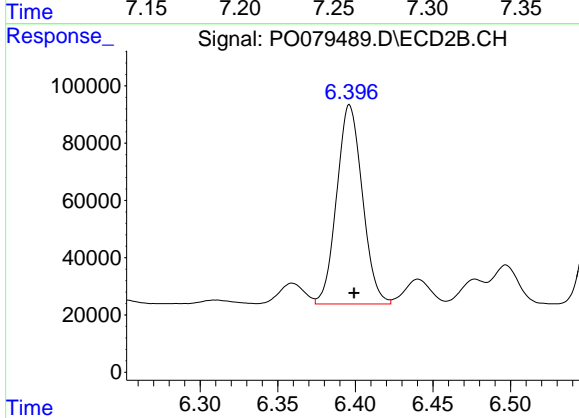
#2 Decachlorobiphenyl  
 R.T.: 9.674 min  
 Delta R.T.: -0.003 min  
 Response: 1287596  
 Conc: 48.65 ng/ml



#26 AR-1254-1

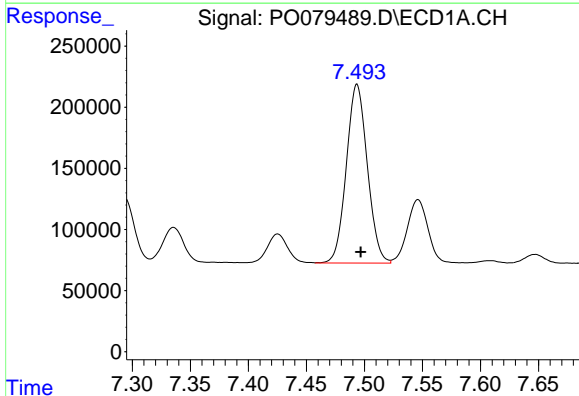
R.T.: 7.263 min  
 Delta R.T.: -0.003 min  
 Response: 1174129  
 Conc: 508.29 ng/ml

Instrument :  
 ECD\_O  
 ClientSampleId :  
 AR1254CCC500



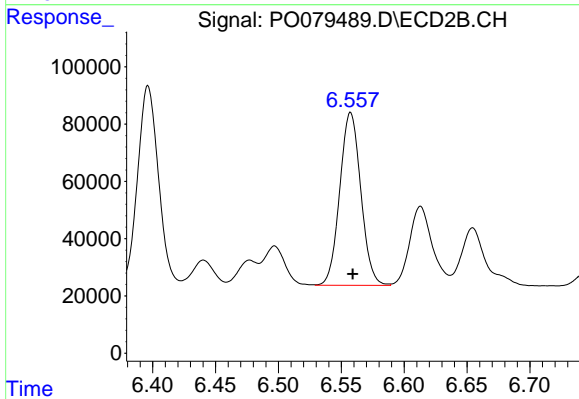
#26 AR-1254-1

R.T.: 6.396 min  
 Delta R.T.: -0.003 min  
 Response: 799699  
 Conc: 475.94 ng/ml



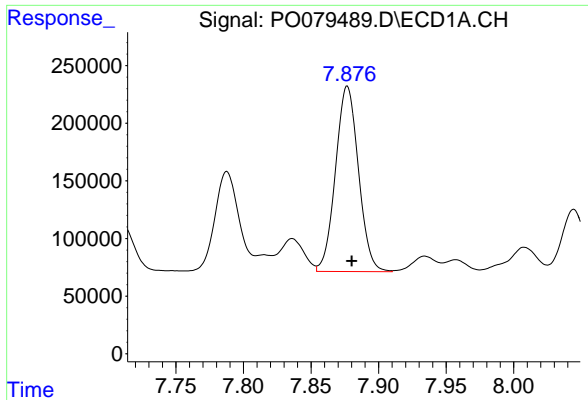
#27 AR-1254-2

R.T.: 7.494 min  
 Delta R.T.: -0.003 min  
 Response: 1840055  
 Conc: 511.68 ng/ml



#27 AR-1254-2

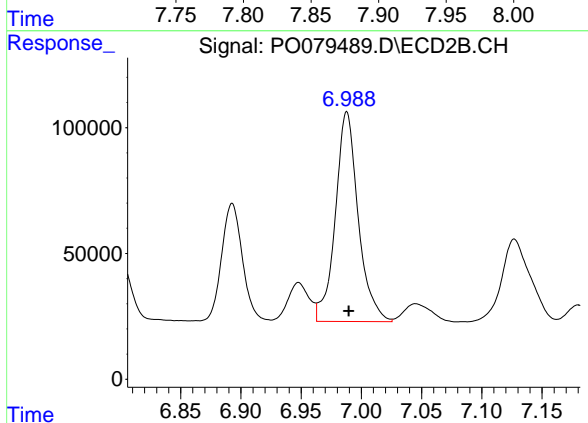
R.T.: 6.557 min  
 Delta R.T.: -0.002 min  
 Response: 703722  
 Conc: 475.52 ng/ml



#28 AR-1254-3

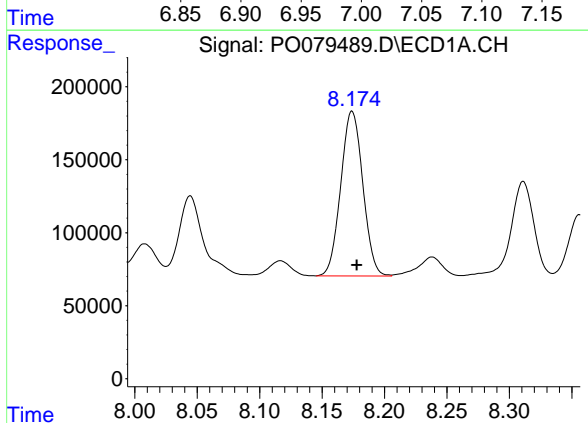
R.T.: 7.877 min  
 Delta R.T.: -0.003 min  
 Response: 1902666  
 Conc: 505.91 ng/ml

Instrument :  
 ECD\_O  
 ClientSampleId :  
 AR1254CCC500



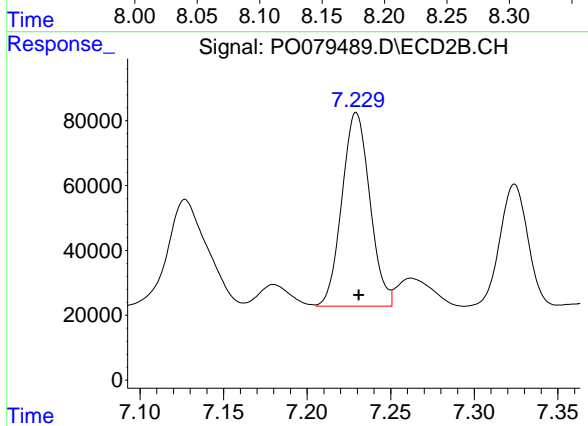
#28 AR-1254-3

R.T.: 6.988 min  
 Delta R.T.: -0.002 min  
 Response: 1103731  
 Conc: 472.34 ng/ml



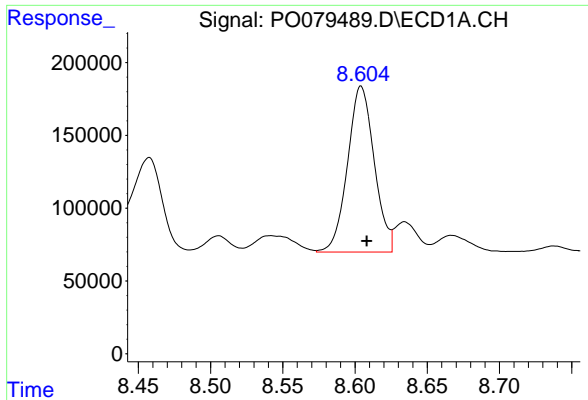
#29 AR-1254-4

R.T.: 8.174 min  
 Delta R.T.: -0.004 min  
 Response: 1390260  
 Conc: 512.47 ng/ml



#29 AR-1254-4

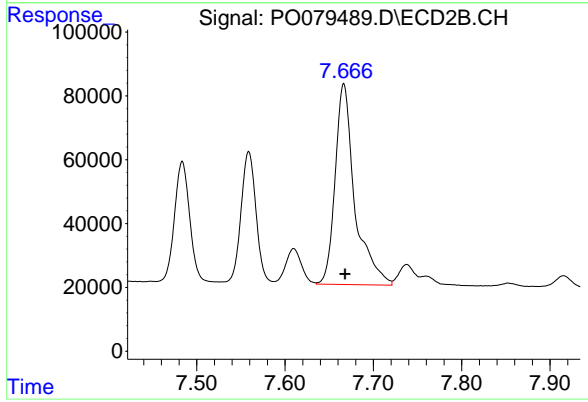
R.T.: 7.229 min  
 Delta R.T.: -0.001 min  
 Response: 696092  
 Conc: 474.94 ng/ml



#30 AR-1254-5

R.T.: 8.604 min  
Delta R.T.: -0.004 min  
Response: 1464712  
Conc: 528.61 ng/ml

Instrument :  
ECD\_O  
ClientSampleId :  
AR1254CCC500



#30 AR-1254-5

R.T.: 7.667 min  
Delta R.T.: -0.001 min  
Response: 973637  
Conc: 488.38 ng/ml