

Data Path : Z:\pestpcbsrv\HPCHEM1\ECD_0\Data\P0071224\
 Data File : P0104765.D
 Signal(s) : Signal #1: ECD1A.ch Signal #2: ECD2B.ch
 Acq On : 12 Jul 2024 16:37
 Operator : YP/AJ
 Sample : AR1254CCC500
 Misc :
 ALS Vial : 6 Sample Multiplier: 1

Instrument :
 ECD_0
ClientSampleId :
 AR1254CCC500

Manual Integrations
APPROVED

Reviewed By :Yogesh Patel 07/15/2024
 Supervised By :Ankita Jodhani 07/15/2024

Integration File signal 1: autoint1.e
 Integration File signal 2: autoint2.e
 Quant Time: Jul 13 03:48:01 2024
 Quant Method : Z:\pestpcbsrv\HPCHEM1\ECD_0\methods\P0070224.M
 Quant Title : GC EXTRACTABLES
 QLast Update : Tue Jul 02 16:29:20 2024
 Response via : Initial Calibration
 Integrator: ChemStation

Volume Inj. : 2 µl
 Signal #1 Phase : ZB-MR1 Signal #2 Phase: ZB-MR2
 Signal #1 Info : 30Mx0.32mmx 0.50µ Signal #2 Info : 30M x 0.32mm x 0.25µm

Compound	RT#1	RT#2	Resp#1	Resp#2	ng/ml	ng/ml

System Monitoring Compounds						
1) SA Tetrachlo...	4.425	3.543	420.4E6	159.8E6	46.949	48.991
2) SA Decachlor...	10.205	8.439	274.8E6	85674060	44.813m	40.854
Target Compounds						
26) L6 AR-1254-1	6.453	5.385	153.4E6	84004454	498.680	498.354
27) L6 AR-1254-2	6.672	5.530	198.7E6	73293076	444.307	492.847
28) L6 AR-1254-3	7.041	5.927	215.4E6	108.9E6	473.475	472.957
29) L6 AR-1254-4	7.328	6.152	155.2E6	67159681	460.214	470.734
30) L6 AR-1254-5	7.751	6.564	168.9E6	90977333	452.298	453.371

(f)=RT Delta > 1/2 Window (#)=Amounts differ by > 25% (m)=manual int.

Data Path : Z:\pestpcbsrv\HPCHEM1\ECD_O\Data\PO071224\
 Data File : PO104765.D
 Signal(s) : Signal #1: ECD1A.ch Signal #2: ECD2B.ch
 Acq On : 12 Jul 2024 16:37
 Operator : YP/AJ
 Sample : AR1254CCC500
 Misc :
 ALS Vial : 6 Sample Multiplier: 1

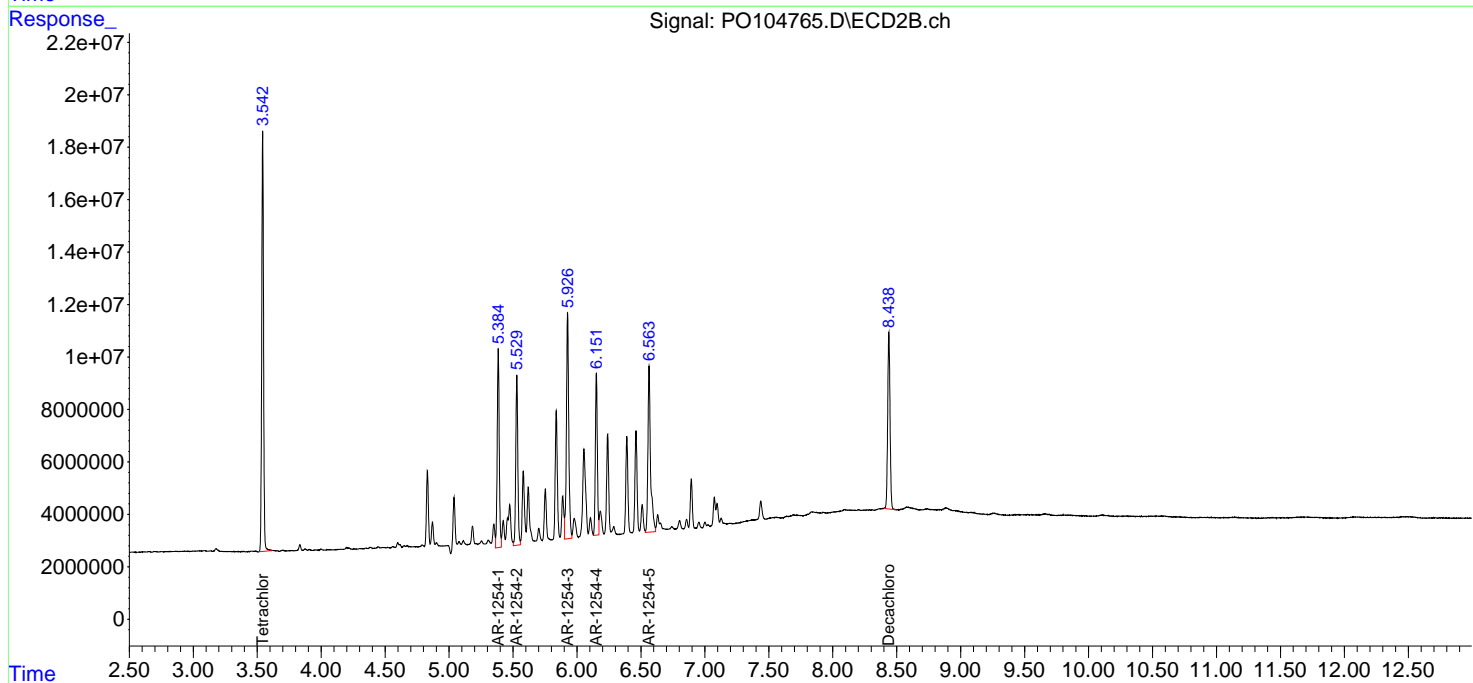
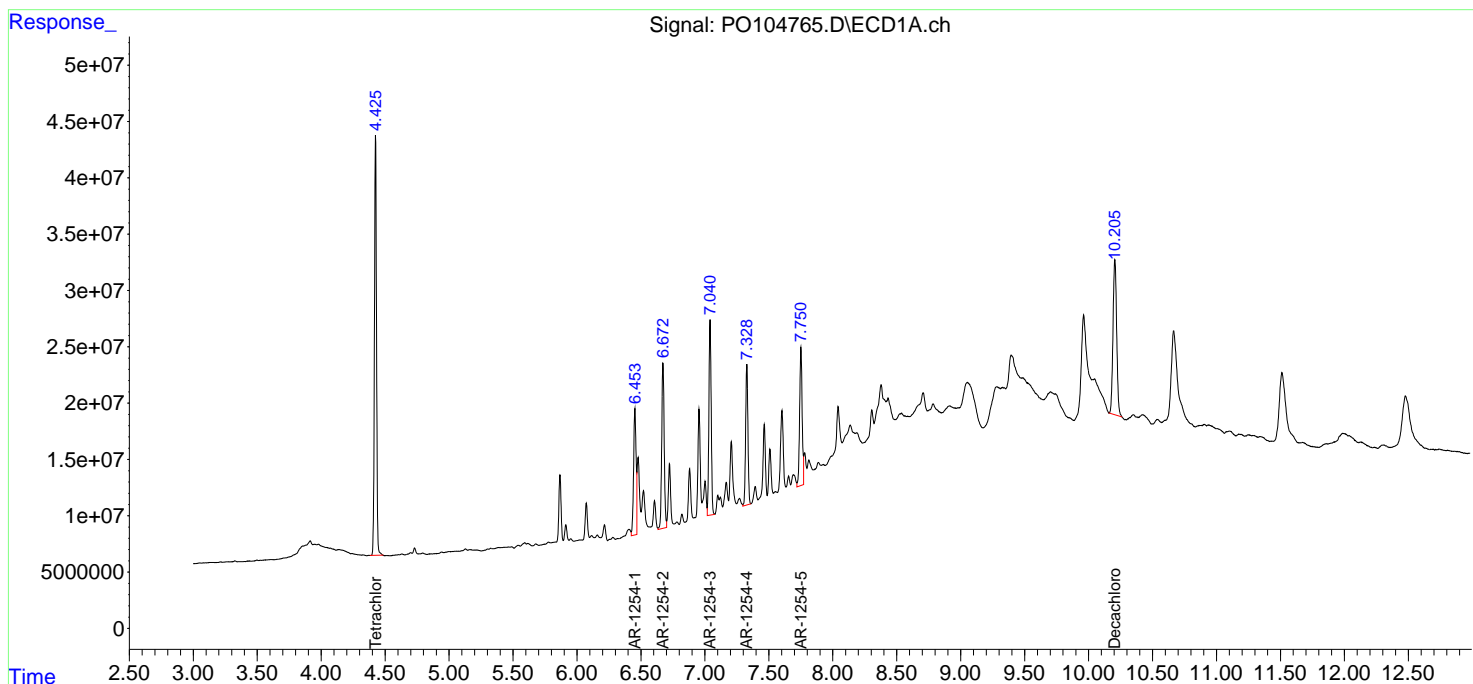
Instrument :
 ECD_O
 ClientSampleId :
 AR1254CCC500

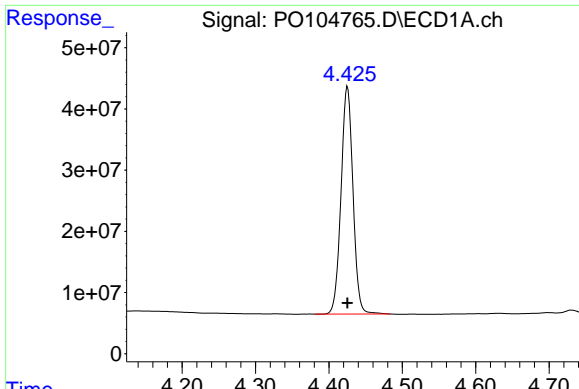
Manual Integrations
 APPROVED

Reviewed By :Yogesh Patel 07/15/2024
 Supervised By :Ankita Jodhani 07/15/2024

Integration File signal 1: autoint1.e
 Integration File signal 2: autoint2.e
 Quant Time: Jul 13 03:48:01 2024
 Quant Method : Z:\pestpcbsrv\HPCHEM1\ECD_O\methods\PO070224.M
 Quant Title : GC EXTRACTABLES
 QLast Update : Tue Jul 02 16:29:20 2024
 Response via : Initial Calibration
 Integrator: ChemStation

Volume Inj. : 2 µl
 Signal #1 Phase : ZB-MR1 Signal #2 Phase: ZB-MR2
 Signal #1 Info : 30Mx0.32mmx 0.50µm Signal #2 Info : 30M x 0.32mm x 0.25µm



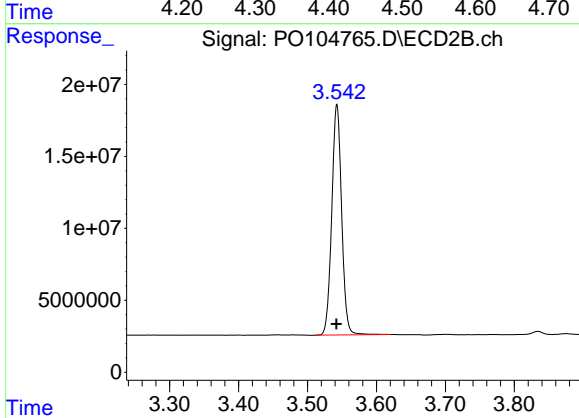


#1 Tetrachloro-m-xylene
 R.T.: 4.425 min
 Delta R.T.: 0.000 min
 Response: 420350724
 Conc: 46.95 ng/ml

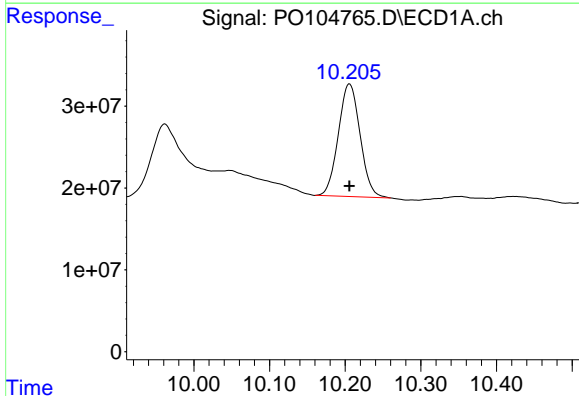
Instrument :
 ECD_O
 ClientSampleId :
 AR1254CCC500

Manual Integrations
 APPROVED

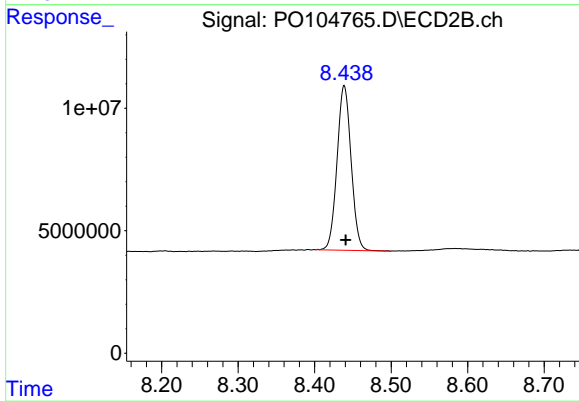
Reviewed By :Yogesh Patel 07/15/2024
 Supervised By :Ankita Jodhani 07/15/2024



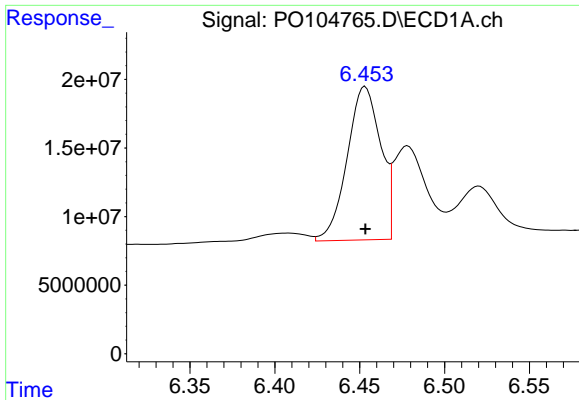
#1 Tetrachloro-m-xylene
 R.T.: 3.543 min
 Delta R.T.: 0.000 min
 Response: 159838929
 Conc: 48.99 ng/ml



#2 Decachlorobiphenyl
 R.T.: 10.205 min
 Delta R.T.: 0.000 min
 Response: 274815886
 Conc: 44.81 ng/ml m



#2 Decachlorobiphenyl
 R.T.: 8.439 min
 Delta R.T.: -0.002 min
 Response: 85674060
 Conc: 40.85 ng/ml



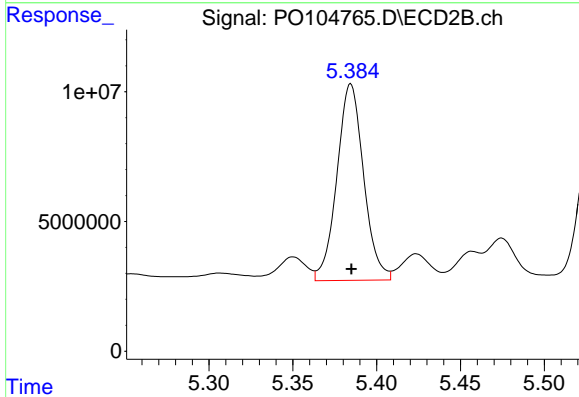
#26 AR-1254-1

R.T.: 6.453 min
 Delta R.T.: 0.000 min
 Response: 153440548
 Conc: 498.68 ng/ml

Instrument :
 ECD_O
 ClientSampleId :
 AR1254CCC500

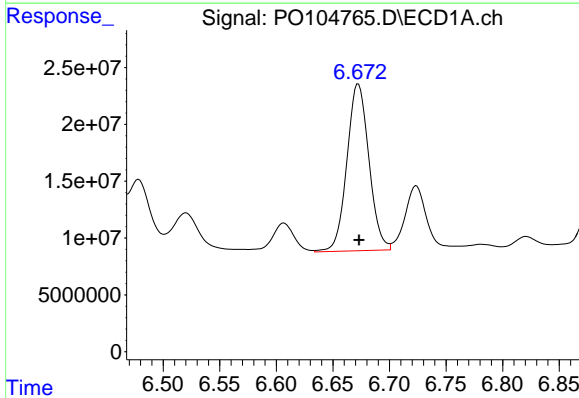
Manual Integrations
 APPROVED

Reviewed By :Yogesh Patel 07/15/2024
 Supervised By :Ankita Jodhani 07/15/2024



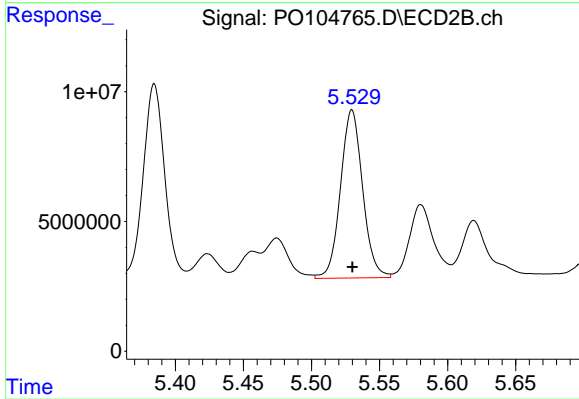
#26 AR-1254-1

R.T.: 5.385 min
 Delta R.T.: 0.000 min
 Response: 84004454
 Conc: 498.35 ng/ml



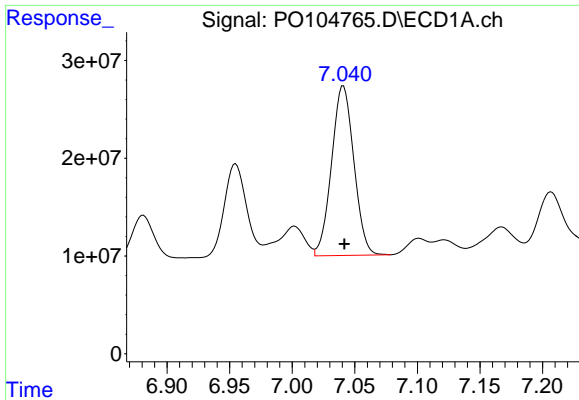
#27 AR-1254-2

R.T.: 6.672 min
 Delta R.T.: 0.000 min
 Response: 198656006
 Conc: 444.31 ng/ml



#27 AR-1254-2

R.T.: 5.530 min
 Delta R.T.: 0.000 min
 Response: 73293076
 Conc: 492.85 ng/ml



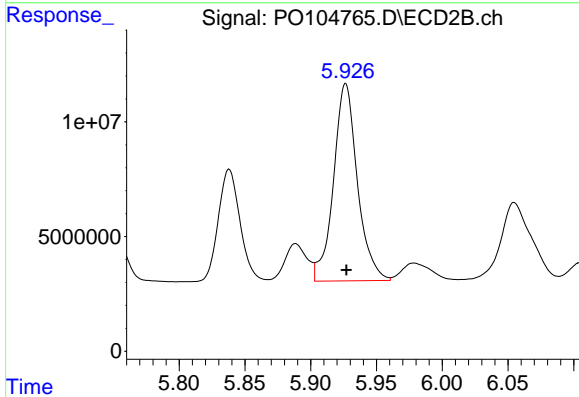
#28 AR-1254-3

R.T.: 7.041 min
 Delta R.T.: 0.000 min
 Response: 215385105
 Conc: 473.48 ng/ml

Instrument :
 ECD_O
 ClientSampleId :
 AR1254CCC500

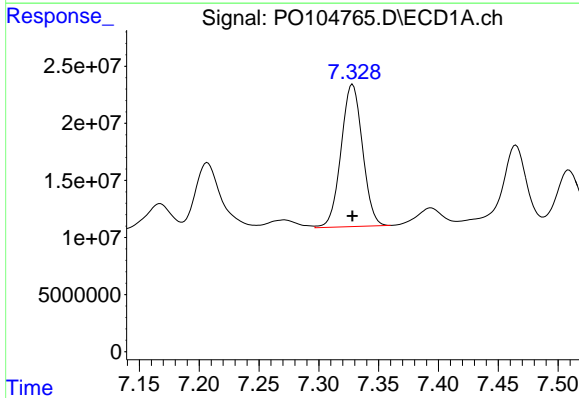
Manual Integrations
 APPROVED

Reviewed By :Yogesh Patel 07/15/2024
 Supervised By :Ankita Jodhani 07/15/2024



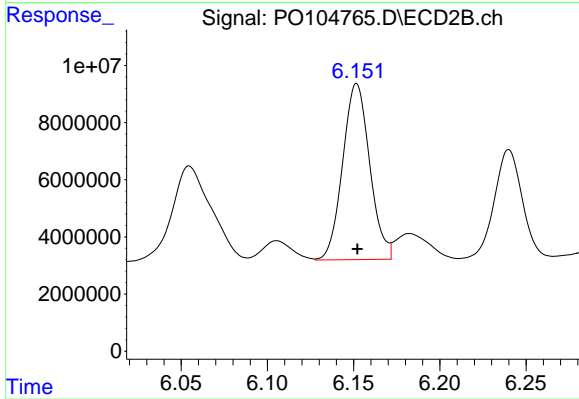
#28 AR-1254-3

R.T.: 5.927 min
 Delta R.T.: 0.000 min
 Response: 108936416
 Conc: 472.96 ng/ml



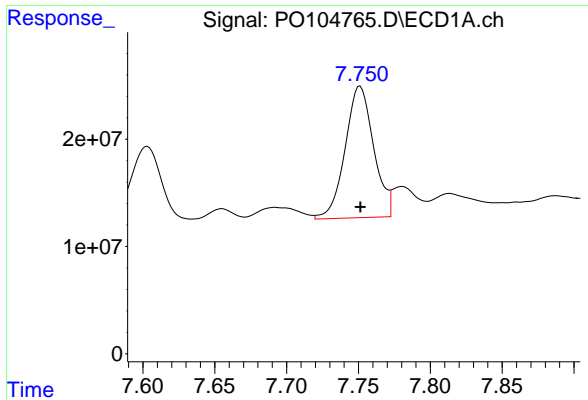
#29 AR-1254-4

R.T.: 7.328 min
 Delta R.T.: 0.000 min
 Response: 155179105
 Conc: 460.21 ng/ml



#29 AR-1254-4

R.T.: 6.152 min
 Delta R.T.: 0.000 min
 Response: 67159681
 Conc: 470.73 ng/ml



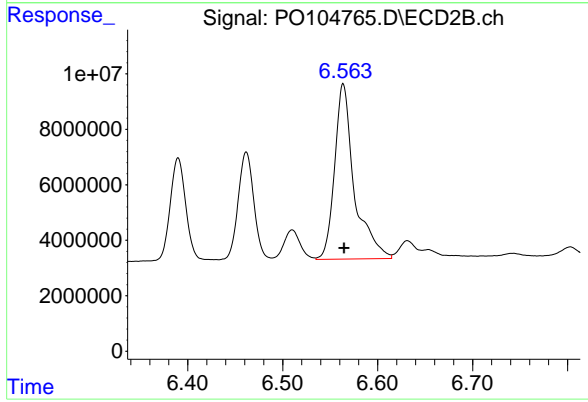
#30 AR-1254-5

R.T.: 7.751 min
 Delta R.T.: 0.000 min
 Response: 168911543
 Conc: 452.30 ng/ml

Instrument :
 ECD_O
 ClientSampleId :
 AR1254CCC500

Manual Integrations
 APPROVED

Reviewed By :Yogesh Patel 07/15/2024
 Supervised By :Ankita Jodhani 07/15/2024



#30 AR-1254-5

R.T.: 6.564 min
 Delta R.T.: 0.000 min
 Response: 90977333
 Conc: 453.37 ng/ml