

Data Path : Z:\pestpcbsrv\HPCHEM1\ECD O\Data\PO071318\
 Data File : PO046684.D
 Signal(s) : Signal #1: ECD1A.CH Signal #2: ECD2B.CH
 Acq On : 13 Jul 2018 14:04
 Operator : SM/SJ
 Sample : I.BLK
 Misc :
 ALS Vial : 2 Sample Multiplier: 1

Instrument :
 ECD_O
ClientSampleId :
 I.BLK

Manual Integrations
APPROVED
 Sohil
 7/16/2018 1:41:48 PM

Integration File signal 1: autoint1.e
 Integration File signal 2: autoint2.e
 Quant Time: Jul 14 02:47:00 2018
 Quant Method : Z:\pestpcbsrv\HPCHEM1\ECD_O\methods\PO070718.M
 Quant Title : GC EXTRACTABLES
 QLast Update : Mon Jul 09 15:27:34 2018
 Response via : Initial Calibration
 Integrator: ChemStation 6890 Scale Mode: Small noise peaks clipped

Volume Inj. : 2 µl
 Signal #1 Phase : ZB-MR1 Signal #2 Phase: ZB-MR2
 Signal #1 Info : 30Mx0.32mmx 0.50µ Signal #2 Info : 30M x 0.32mm x 0.25µm

Compound	RT#1	RT#2	Resp#1	Resp#2	ng/ml	ng/ml

System Monitoring Compounds						
1) SA Tetrachlo...	4.202	3.527	3268392	3240976	13.676	15.258
2) SA Decachlor...	9.723	8.455	3442194	3296177	18.059m	16.992

Target Compounds

(f)=RT Delta > 1/2 Window (#)=Amounts differ by > 25% (m)=manual int.

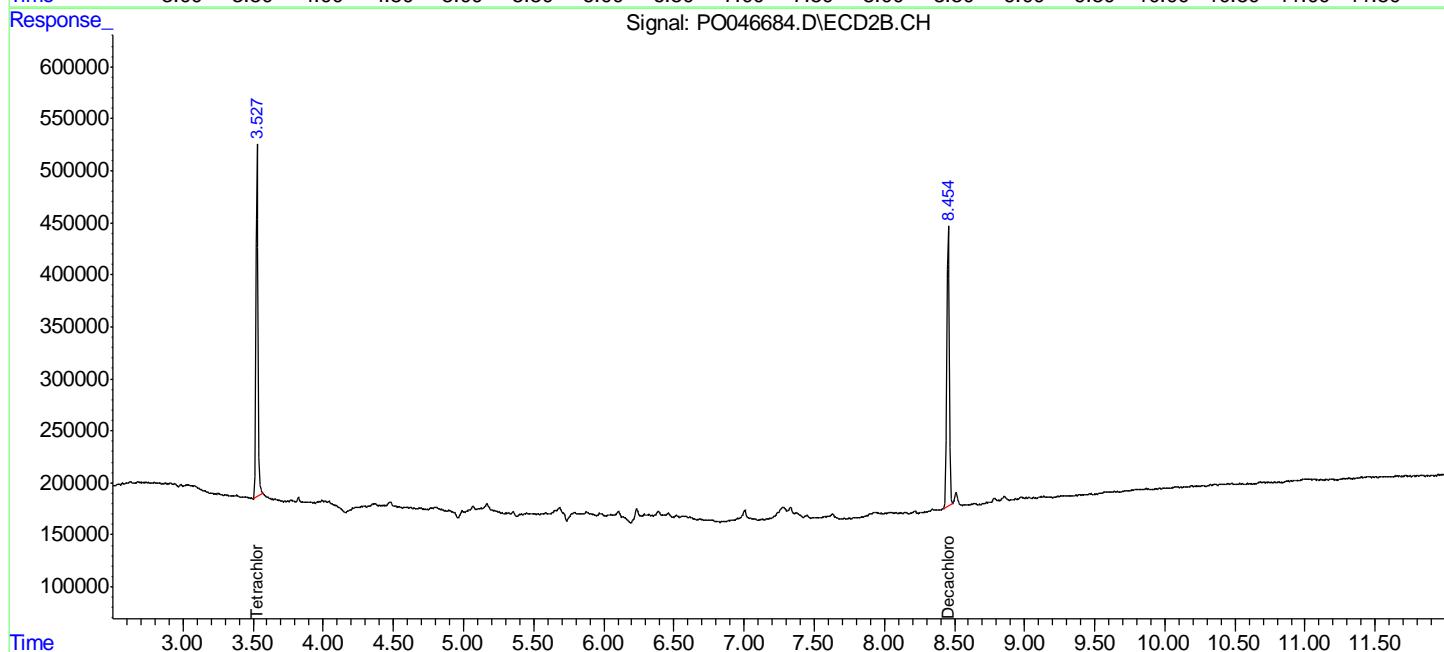
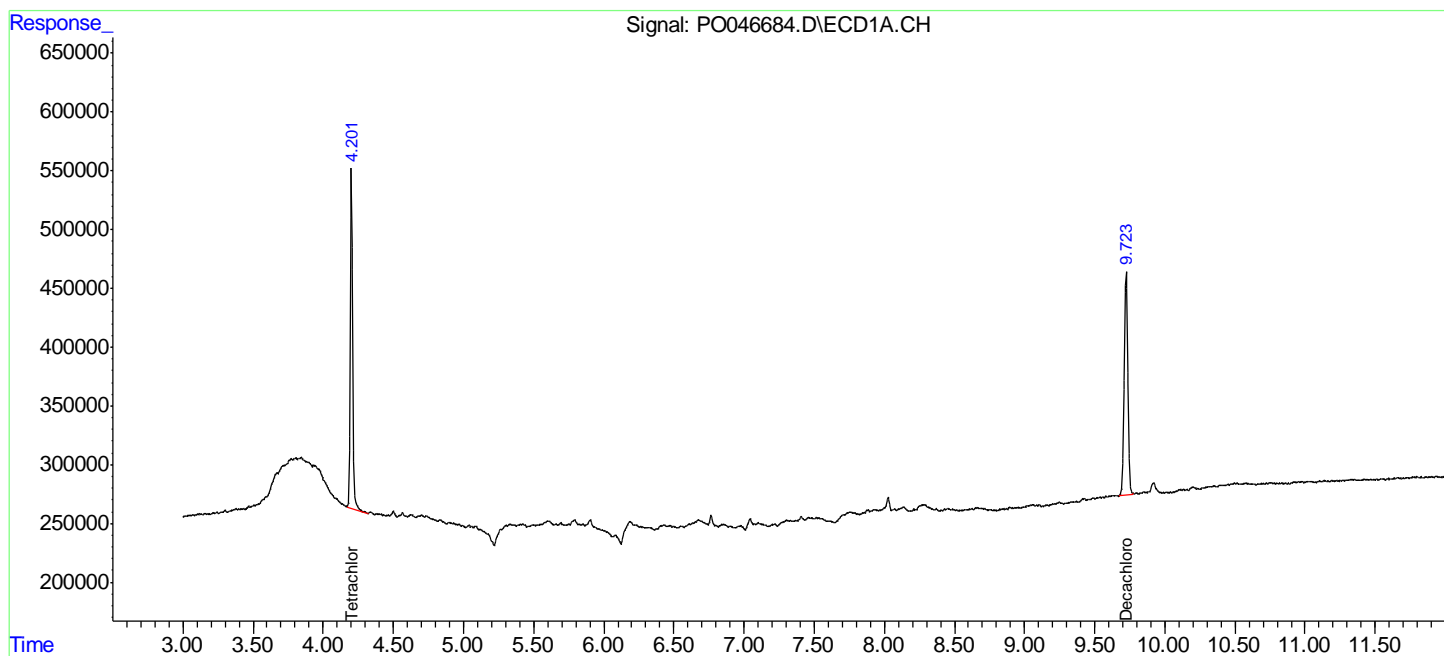
Data Path : Z:\pestpcbsrv\HPCHEM1\ECD O\Data\PO071318\
 Data File : PO046684.D
 Signal(s) : Signal #1: ECD1A.CH Signal #2: ECD2B.CH
 Acq On : 13 Jul 2018 14:04
 Operator : SM/SJ
 Sample : I.BLK
 Misc :
 ALS Vial : 2 Sample Multiplier: 1

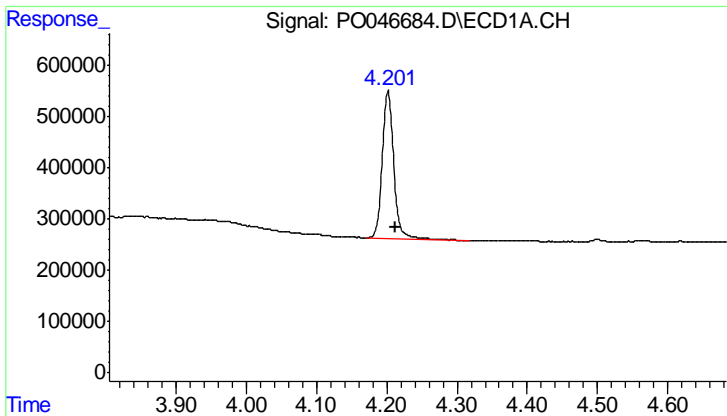
Instrument :
 ECD_O
 ClientSampled :
 I.BLK

Manual Integrations
APPROVED
 Sohil
 7/16/2018 1:41:48 PM

Integration File signal 1: autoint1.e
 Integration File signal 2: autoint2.e
 Quant Time: Jul 14 02:47:00 2018
 Quant Method : Z:\pestpcbsrv\HPCHEM1\ECD_O\methods\PO070718.M
 Quant Title : GC EXTRACTABLES
 QLast Update : Mon Jul 09 15:27:34 2018
 Response via : Initial Calibration
 Integrator: ChemStation 6890 Scale Mode: Small noise peaks clipped

Volume Inj. : 2 µl
 Signal #1 Phase : ZB-MR1 Signal #2 Phase: ZB-MR2
 Signal #1 Info : 30Mx0.32mmx 0.50µ Signal #2 Info : 30M x 0.32mm x 0.25µm





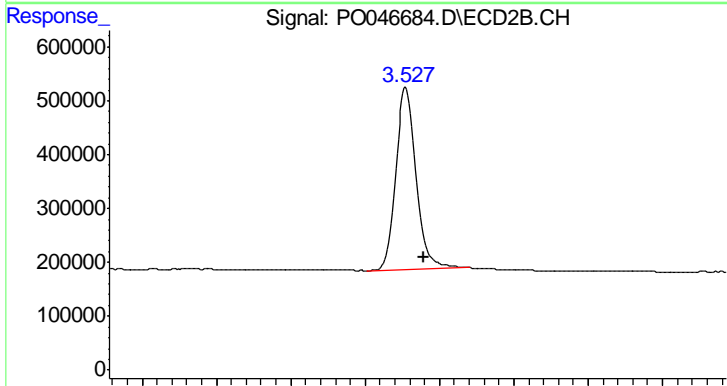
#1 Tetrachloro-m-xylene

R.T.: 4.202 min
 Delta R.T.: -0.011 min
 Response: 3268392
 Conc: 13.68 ng/ml

Instrument :
 ECD_O
 ClientSampled :
 I.BLK

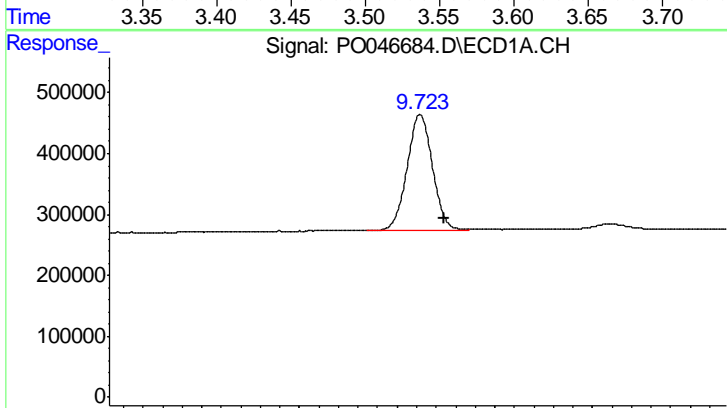
Manual Integrations
 APPROVED

Sohil
 7/16/2018 1:41:48 PM



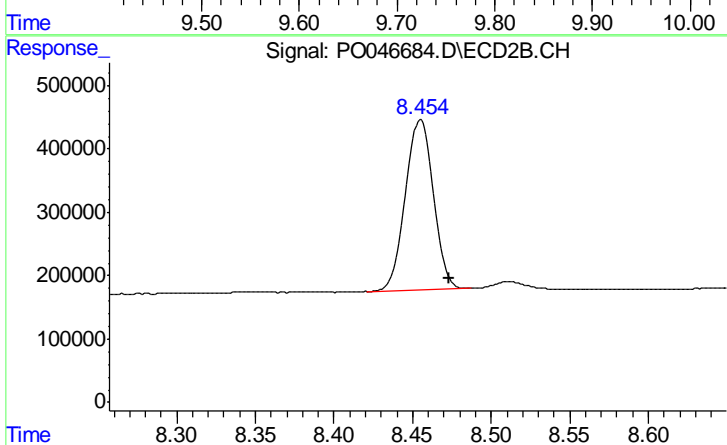
#1 Tetrachloro-m-xylene

R.T.: 3.527 min
 Delta R.T.: -0.012 min
 Response: 3240976
 Conc: 15.26 ng/ml



#2 Decachlorobiphenyl

R.T.: 9.723 min
 Delta R.T.: -0.025 min
 Response: 3442194
 Conc: 18.06 ng/ml m



#2 Decachlorobiphenyl

R.T.: 8.455 min
 Delta R.T.: -0.018 min
 Response: 3296177
 Conc: 16.99 ng/ml