

Data Path : Z:\pestpcbsrv\HPCHEM1\ECD_0\Data\P0071320\
 Data File : P0069557.D
 Signal(s) : Signal #1: ECD1A.CH Signal #2: ECD2B.CH
 Acq On : 13 Jul 2020 10:45
 Operator : DD\AJ
 Sample : L3274-05
 Misc :
 ALS Vial : 7 Sample Multiplier: 1

Instrument :
 ECD_0
 ClientSampled :

Integration File signal 1: autoint1.e
 Integration File signal 2: autoint2.e
 Quant Time: Jul 13 11:03:51 2020
 Quant Method : Z:\pestpcbsrv\HPCHEM1\ECD_0\methods\P0070820.M
 Quant Title : GC EXTRACTABLES
 QLast Update : Wed Jul 08 16:12:41 2020
 Response via : Initial Calibration
 Integrator: ChemStation 6890 Scale Mode: Small noise peaks clipped

Volume Inj. : 2 µl
 Signal #1 Phase : ZB-MR1 Signal #2 Phase: ZB-MR2
 Signal #1 Info : 30Mx0.32mmx 0.50µ Signal #2 Info : 30M x 0.32mm x 0.25µm

Compound	RT#1	RT#2	Resp#1	Resp#2	ng/ml	ng/ml
System Monitoring Compounds						
1) SA Tetrachlo...	4.393	3.566	968849	1001738	25.950	25.172
2) SA Decachlor...	10.055	8.775	5504055	4171748	91.481	73.506
Target Compounds						
3) L1 AR-1016-1	5.684f	4.775f	714413	515114	398.792	306.320
4) L1 AR-1016-2	5.741f	4.816	164304	48738	64.811	20.959 #
5) L1 AR-1016-3	5.788	5.010	98630	404378	64.308	317.442 #
6) L1 AR-1016-4	5.920f	5.059	754861	144369	582.482	132.202 #
7) L1 AR-1016-5	6.188f	5.280	600532	120222	455.778	87.399 #
9) L2 AR-1221-2	0.000	3.905	0	65198	N.D.	182.206 #
10) L2 AR-1221-3	4.831	4.021f	64808	27325	63.778	24.985 #
11) L3 AR-1232-1	4.831	4.021f	64808	27325	79.674	30.562 #
12) L3 AR-1232-2	0.000	4.816	0	48738	N.D.	50.416 #
13) L3 AR-1232-3	5.741f	5.010	164304	404378	164.365	773.967 #
14) L3 AR-1232-4	5.920f	5.105	754861	355616	1542.785	811.106 #
15) L3 AR-1232-5	5.993	5.280	245183	120222	772.588	229.810 #
16) L4 AR-1242-1	5.684f	4.775f	714413	515114	548.122	410.818 #
17) L4 AR-1242-2	5.741f	4.816	164304	48738	87.253	27.896 #
18) L4 AR-1242-3	5.788	5.010	98630	404378	86.851	420.058 #
19) L4 AR-1242-4	5.920f	5.105	754861	355616	786.645	393.088 #
20) L4 AR-1242-5	6.671	5.657	605348	632596	509.925	499.108
21) L5 AR-1248-1	5.684f	4.816f	714413	48738	731.559	49.801 #
22) L5 AR-1248-2	5.993	5.059	245183	144369	192.568	106.046 #
23) L5 AR-1248-3	6.188f	5.105	600532	355616	379.970	281.580 #
24) L5 AR-1248-4	6.630	5.280	414152	120222	204.109	74.013 #
25) L5 AR-1248-5	6.671	5.698	605348	175784	315.408	106.524 #
26) L6 AR-1254-1	6.597	5.657	1000893	632596	502.814	243.017 #
27) L6 AR-1254-2	6.826	5.818	2068310	851661	644.285	368.912 #
28) L6 AR-1254-3	7.203	6.229	1419433	734420	404.156	195.558 #
29) L6 AR-1254-4	7.496	6.469	830551	437363	277.510	173.067 #
30) L6 AR-1254-5	7.919	6.892	2093543	1986056	695.808	553.381
31) L7 AR-1260-1	7.367	6.366	1714607	1380127	652.088	523.257
32) L7 AR-1260-2	7.637	6.567	4122129	2160725	1162.013	660.135 #
33) L7 AR-1260-3	7.993	6.713	1174822	1154624	406.374	379.232
34) L7 AR-1260-4	8.219	7.193	1044825	707749	352.750	261.472 #
35) L7 AR-1260-5	8.534	7.444	1890957	1573797	279.463	245.575
36) L8 AR-1262-1	7.993	6.892	1174822	1986056	295.221	1028.512 #
37) L8 AR-1262-2	8.534	7.444	1890957	1573797	261.974	241.038
38) L8 AR-1262-3	8.805	7.728	520069	538294	108.614	199.735 #
39) L8 AR-1262-4	8.870f	7.788	767651	1303955	396.021	261.882 #
40) L8 AR-1262-5	9.448	8.287	459316	407993	176.110	164.190
41) L9 AR-1268-1	8.805	7.728	520069	538294	56.737	68.764
42) L9 AR-1268-2	8.870f	7.788	767651	1303955	92.615	182.550 #

Data Path : Z:\pestpcbsrv\HPCHEM1\ECD_0\Data\P0071320\
 Data File : P0069557.D
 Signal(s) : Signal #1: ECD1A.CH Signal #2: ECD2B.CH
 Acq On : 13 Jul 2020 10:45
 Operator : DD\AJ
 Sample : L3274-05
 Misc :
 ALS Vial : 7 Sample Multiplier: 1

Instrument :
 ECD_0
 ClientSampleId :

Integration File signal 1: autoint1.e
 Integration File signal 2: autoint2.e
 Quant Time: Jul 13 11:03:51 2020
 Quant Method : Z:\pestpcbsrv\HPCHEM1\ECD_0\methods\P0070820.M
 Quant Title : GC EXTRACTABLES
 QLast Update : Wed Jul 08 16:12:41 2020
 Response via : Initial Calibration
 Integrator: ChemStation 6890 Scale Mode: Small noise peaks clipped

Volume Inj. : 2 µl
 Signal #1 Phase : ZB-MR1 Signal #2 Phase: ZB-MR2
 Signal #1 Info : 30Mx0.32mmx 0.50µ Signal #2 Info : 30M x 0.32mm x 0.25µm

	Compound	RT#1	RT#2	Resp#1	Resp#2	ng/ml	ng/ml
43)	L9 AR-1268-3	9.072	7.994	710489	668911	100.406	112.022
44)	L9 AR-1268-4	9.448	8.287	459316	407993	151.543	141.075
45)	L9 AR-1268-5	9.785	8.557	1597616	1254368	71.917	65.053

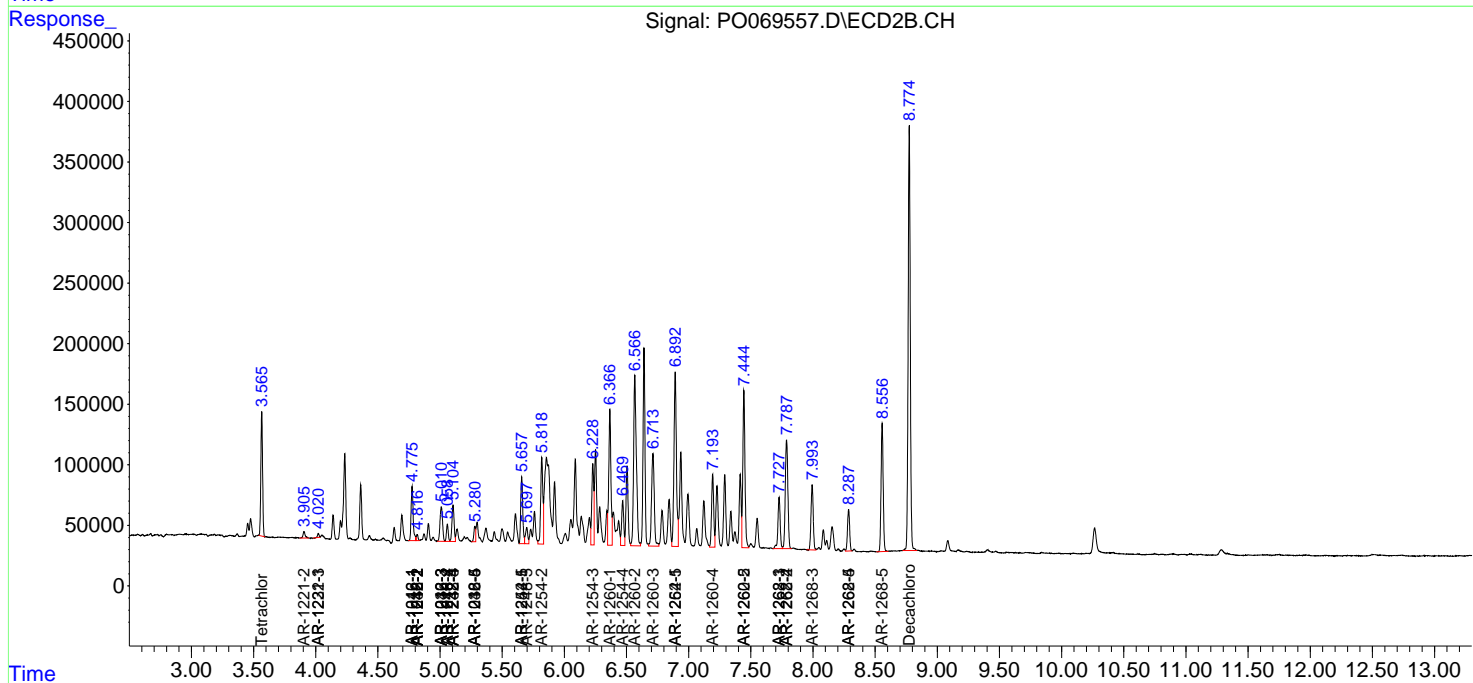
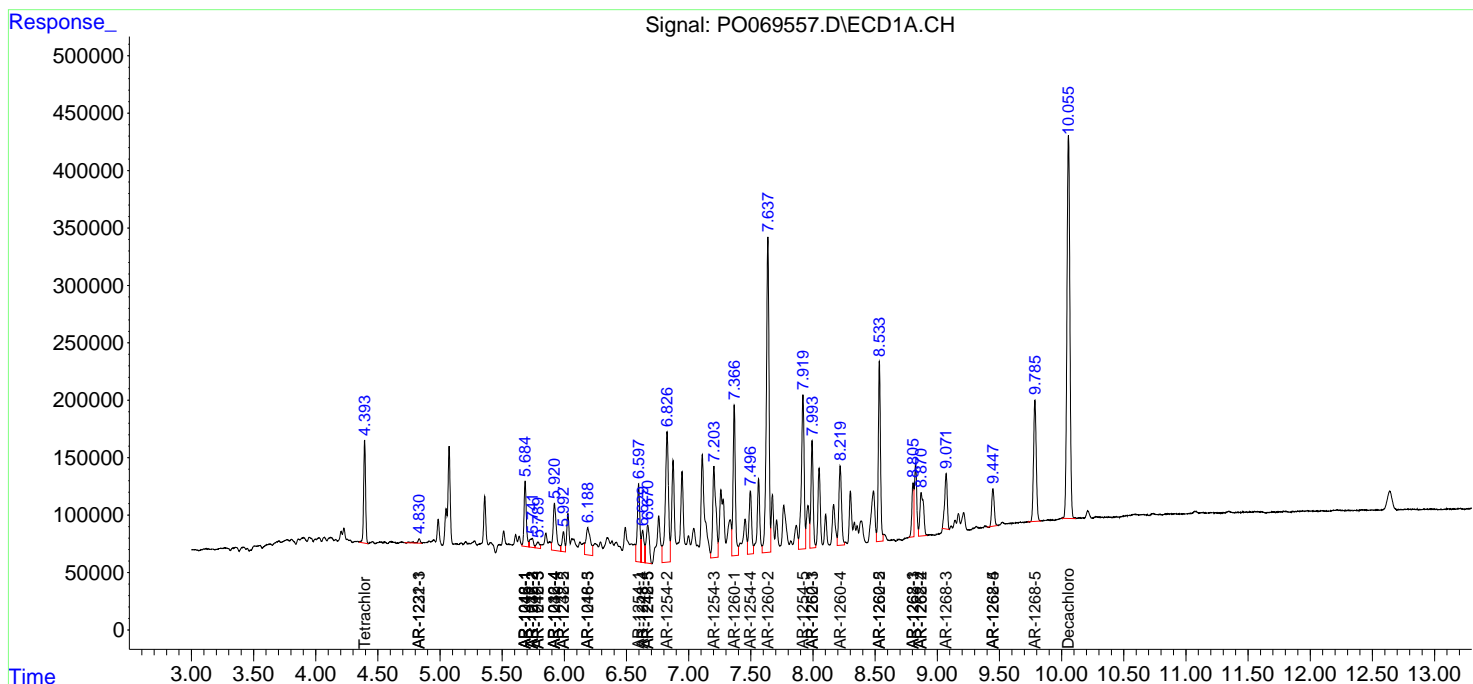
(f)=RT Delta > 1/2 Window (#)=Amounts differ by > 25% (m)=manual int.

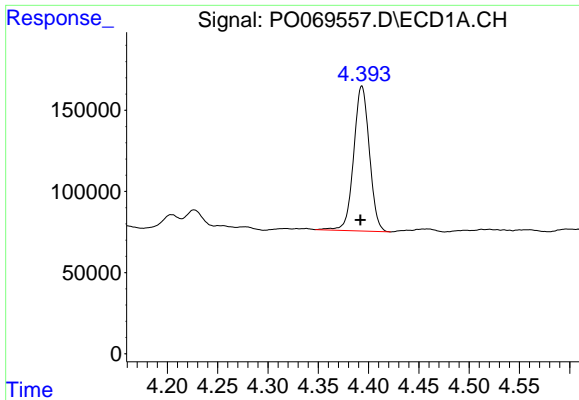
Data Path : Z:\pestpcbsrv\HPCHEM1\ECD_O\Data\P0071320\
 Data File : P0069557.D
 Signal(s) : Signal #1: ECD1A.CH Signal #2: ECD2B.CH
 Acq On : 13 Jul 2020 10:45
 Operator : DD\AJ
 Sample : L3274-05
 Misc :
 ALS Vial : 7 Sample Multiplier: 1

Instrument :
 ECD_O
 ClientSampled :

Integration File signal 1: autoint1.e
 Integration File signal 2: autoint2.e
 Quant Time: Jul 13 11:03:51 2020
 Quant Method : Z:\pestpcbsrv\HPCHEM1\ECD_O\methods\P0070820.M
 Quant Title : GC EXTRACTABLES
 QLast Update : Wed Jul 08 16:12:41 2020
 Response via : Initial Calibration
 Integrator: ChemStation 6890 Scale Mode: Small noise peaks clipped

Volume Inj. : 2 µl
 Signal #1 Phase : ZB-MR1 Signal #2 Phase: ZB-MR2
 Signal #1 Info : 30Mx0.32mmx 0.50µ Signal #2 Info : 30M x 0.32mm x 0.25µm

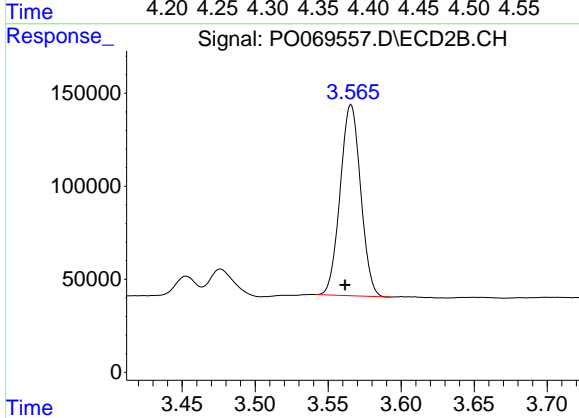




#1 Tetrachloro-m-xylene

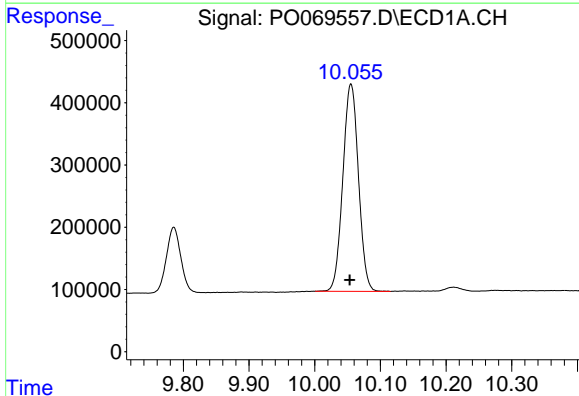
R.T.: 4.393 min
 Delta R.T.: 0.001 min
 Response: 968849
 Conc: 25.95 ng/ml

Instrument :
 ECD_O
 ClientSampled :



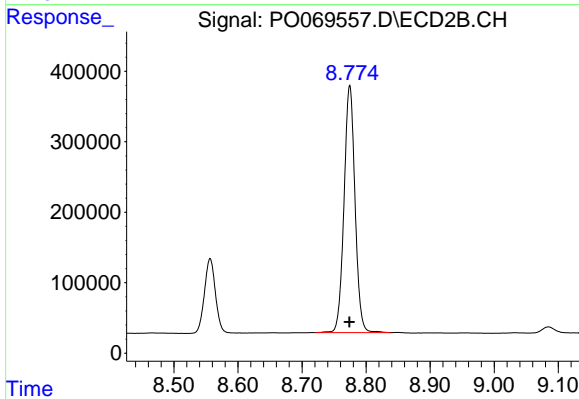
#1 Tetrachloro-m-xylene

R.T.: 3.566 min
 Delta R.T.: 0.004 min
 Response: 1001738
 Conc: 25.17 ng/ml



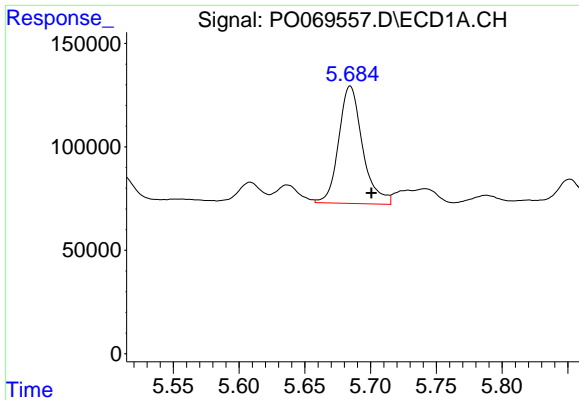
#2 Decachlorobiphenyl

R.T.: 10.055 min
 Delta R.T.: 0.002 min
 Response: 5504055
 Conc: 91.48 ng/ml



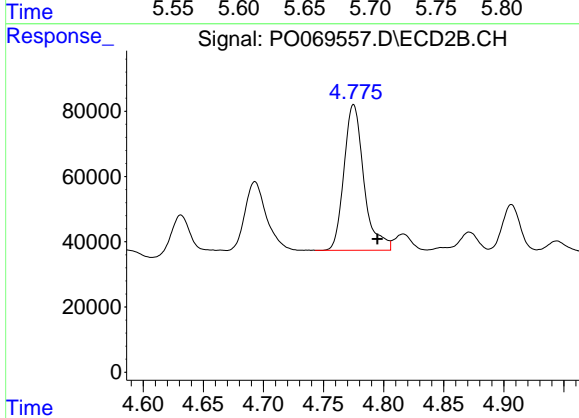
#2 Decachlorobiphenyl

R.T.: 8.775 min
 Delta R.T.: 0.000 min
 Response: 4171748
 Conc: 73.51 ng/ml

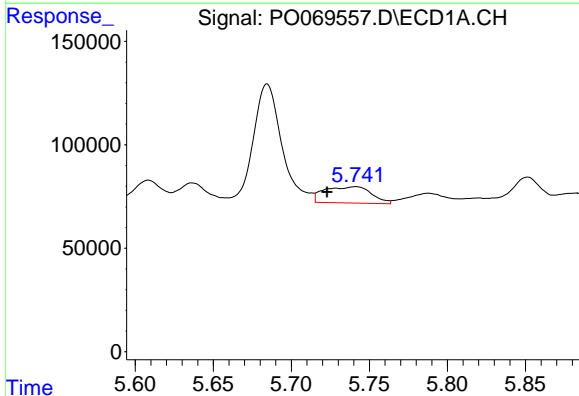


#3 AR-1016-1
 R.T.: 5.684 min
 Delta R.T.: -0.016 min
 Response: 714413
 Conc: 398.79 ng/ml

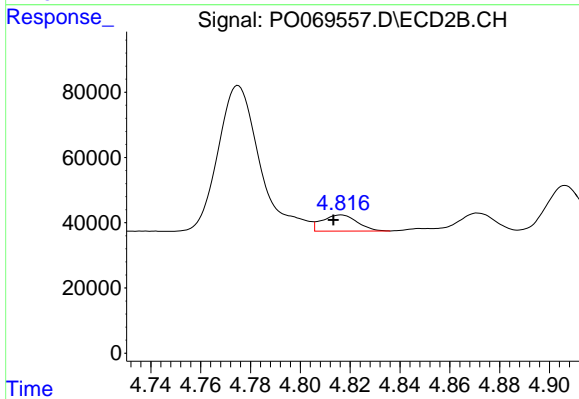
Instrument :
 ECD_O
 ClientSampled :



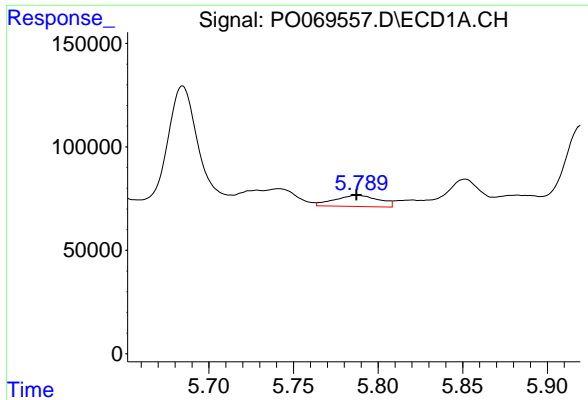
#3 AR-1016-1
 R.T.: 4.775 min
 Delta R.T.: -0.020 min
 Response: 515114
 Conc: 306.32 ng/ml



#4 AR-1016-2
 R.T.: 5.741 min
 Delta R.T.: 0.018 min
 Response: 164304
 Conc: 64.81 ng/ml

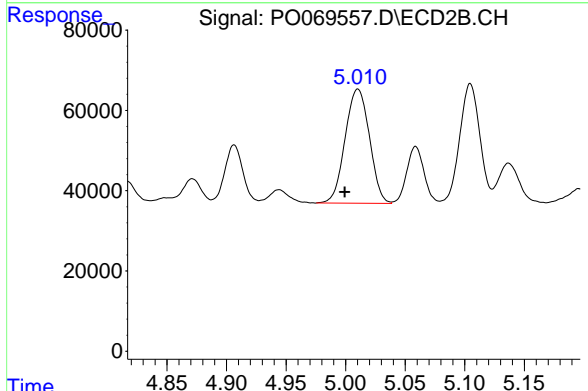


#4 AR-1016-2
 R.T.: 4.816 min
 Delta R.T.: 0.003 min
 Response: 48738
 Conc: 20.96 ng/ml

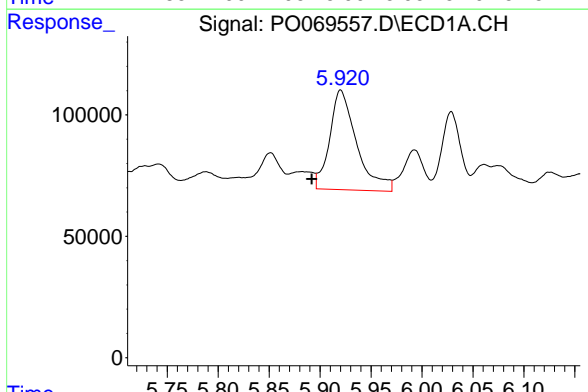


#5 AR-1016-3
 R.T.: 5.788 min
 Delta R.T.: 0.000 min
 Response: 98630
 Conc: 64.31 ng/ml

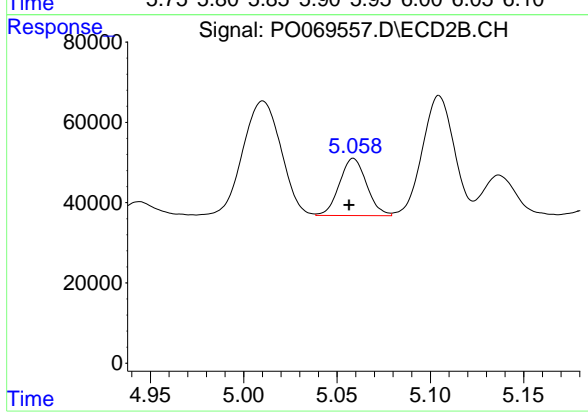
Instrument :
 ECD_O
 ClientSampled :



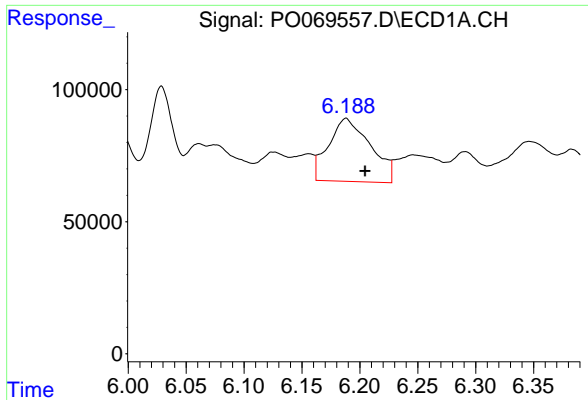
#5 AR-1016-3
 R.T.: 5.010 min
 Delta R.T.: 0.011 min
 Response: 404378
 Conc: 317.44 ng/ml



#6 AR-1016-4
 R.T.: 5.920 min
 Delta R.T.: 0.028 min
 Response: 754861
 Conc: 582.48 ng/ml



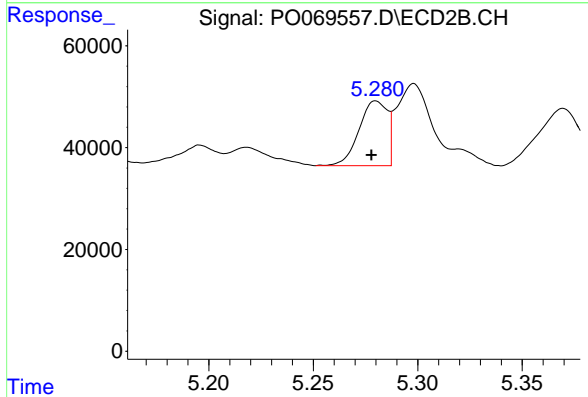
#6 AR-1016-4
 R.T.: 5.059 min
 Delta R.T.: 0.002 min
 Response: 144369
 Conc: 132.20 ng/ml



#7 AR-1016-5

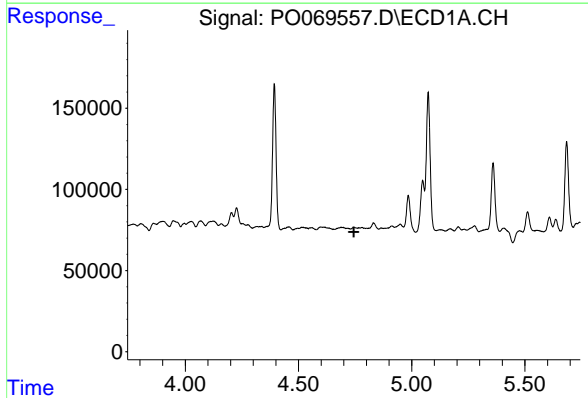
R.T.: 6.188 min
 Delta R.T.: -0.016 min
 Response: 600532
 Conc: 455.78 ng/ml

Instrument :
 ECD_O
 ClientSampled :



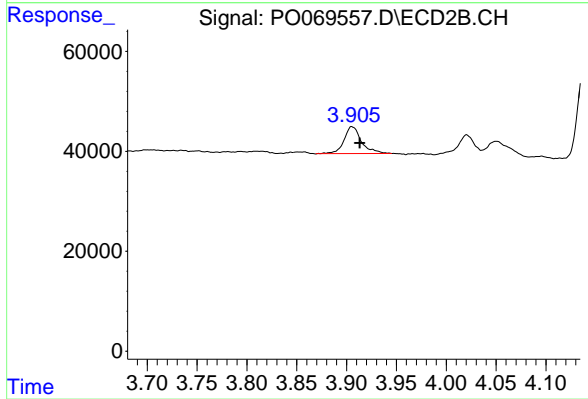
#7 AR-1016-5

R.T.: 5.280 min
 Delta R.T.: 0.002 min
 Response: 120222
 Conc: 87.40 ng/ml



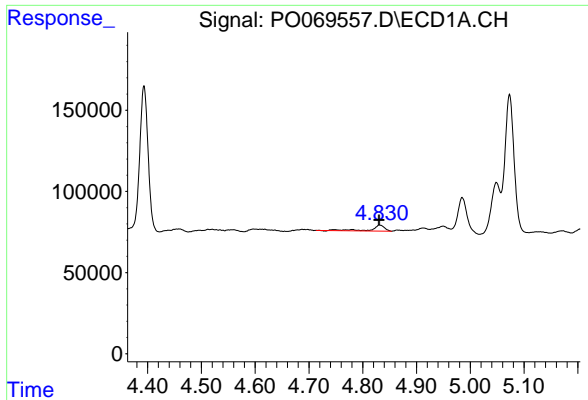
#9 AR-1221-2

R.T.: 0.000 min
 Exp R.T. : 4.745 min
 Response: 0
 Conc: N.D.



#9 AR-1221-2

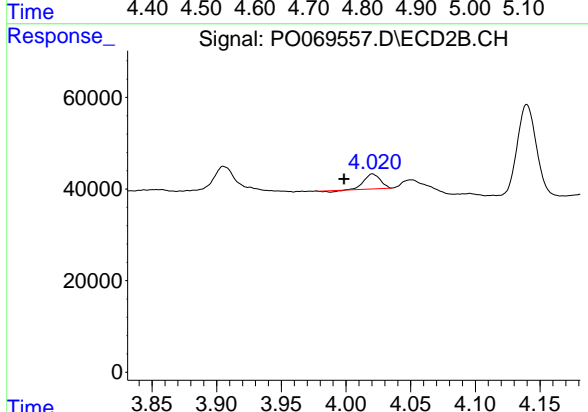
R.T.: 3.905 min
 Delta R.T.: -0.008 min
 Response: 65198
 Conc: 182.21 ng/ml



#10 AR-1221-3

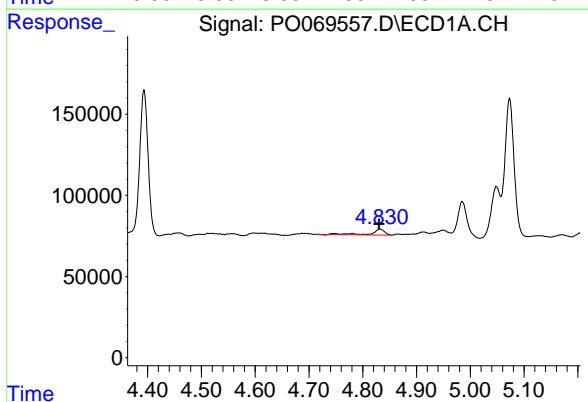
R.T.: 4.831 min
 Delta R.T.: 0.000 min
 Response: 64808
 Conc: 63.78 ng/ml

Instrument :
 ECD_O
 ClientSampled :



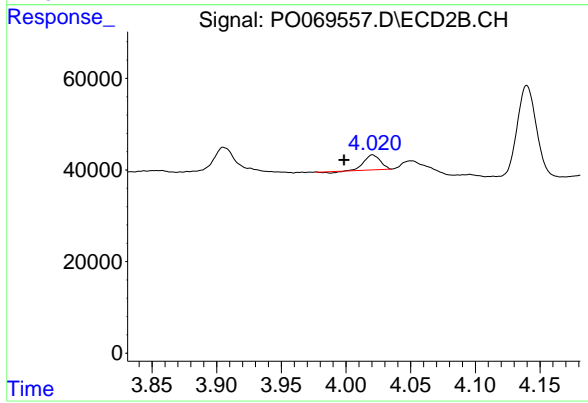
#10 AR-1221-3

R.T.: 4.021 min
 Delta R.T.: 0.022 min
 Response: 27325
 Conc: 24.99 ng/ml



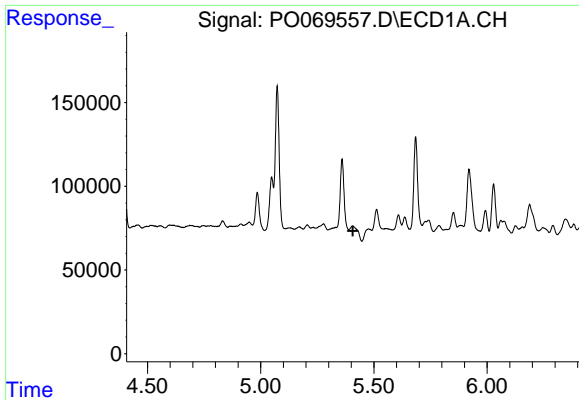
#11 AR-1232-1

R.T.: 4.831 min
 Delta R.T.: 0.000 min
 Response: 64808
 Conc: 79.67 ng/ml



#11 AR-1232-1

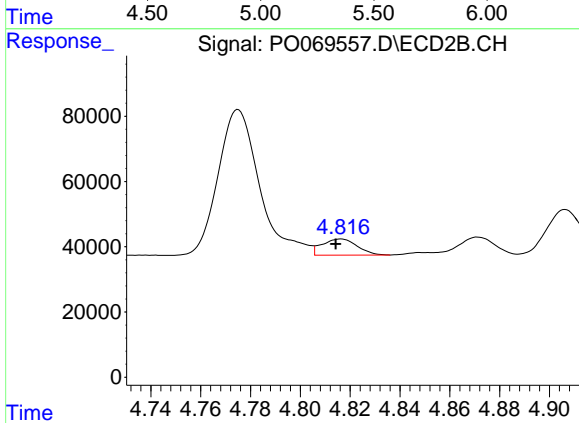
R.T.: 4.021 min
 Delta R.T.: 0.022 min
 Response: 27325
 Conc: 30.56 ng/ml



#12 AR-1232-2

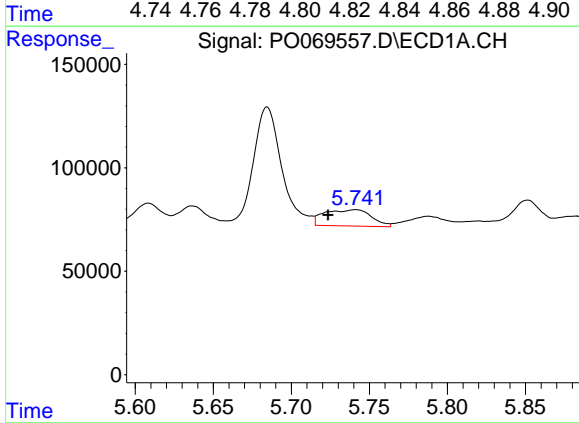
R.T.: 0.000 min
 Exp R.T.: 5.407 min
 Response: 0
 Conc: N.D.

Instrument :
 ECD_O
 ClientSampled :



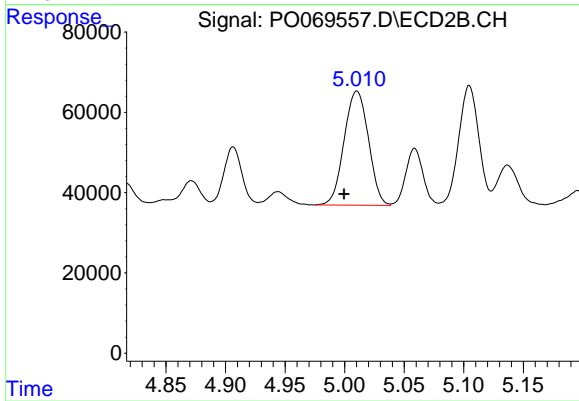
#12 AR-1232-2

R.T.: 4.816 min
 Delta R.T.: 0.002 min
 Response: 48738
 Conc: 50.42 ng/ml



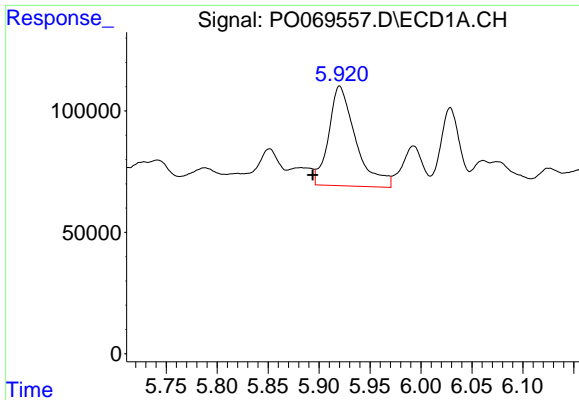
#13 AR-1232-3

R.T.: 5.741 min
 Delta R.T.: 0.018 min
 Response: 164304
 Conc: 164.37 ng/ml



#13 AR-1232-3

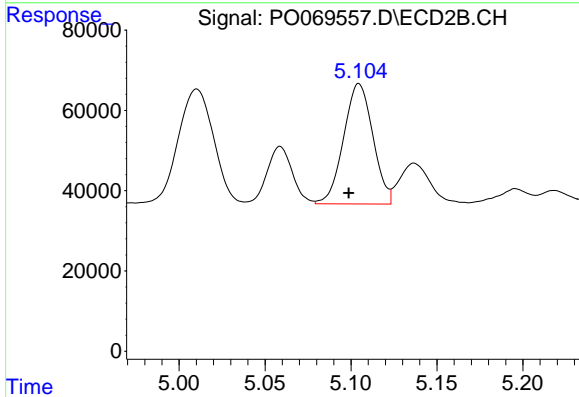
R.T.: 5.010 min
 Delta R.T.: 0.011 min
 Response: 404378
 Conc: 773.97 ng/ml



#14 AR-1232-4

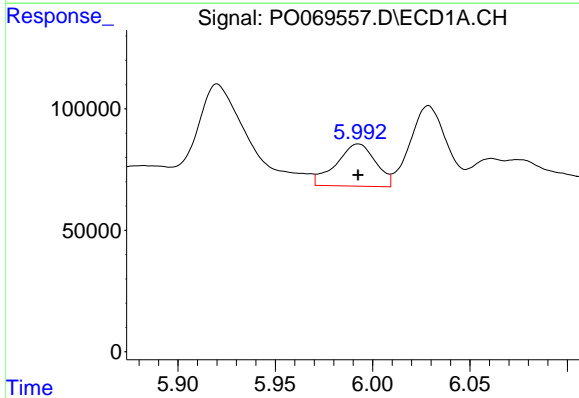
R.T.: 5.920 min
 Delta R.T.: 0.026 min
 Response: 754861
 Conc: 1542.79 ng/ml

Instrument :
 ECD_O
 ClientSampleId :



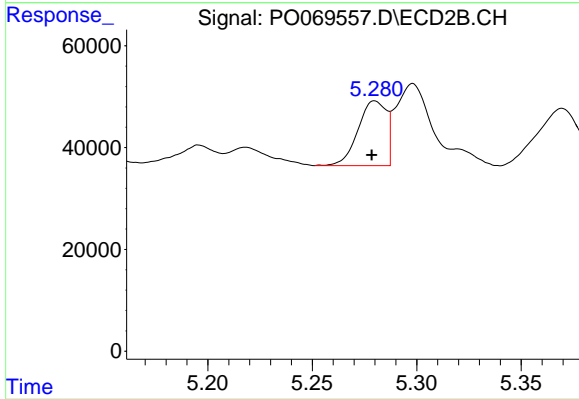
#14 AR-1232-4

R.T.: 5.105 min
 Delta R.T.: 0.006 min
 Response: 355616
 Conc: 811.11 ng/ml



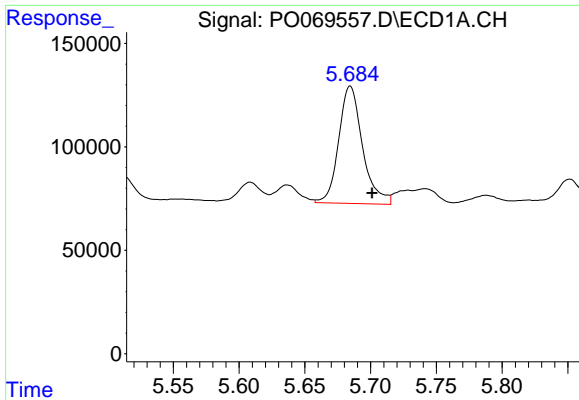
#15 AR-1232-5

R.T.: 5.993 min
 Delta R.T.: 0.000 min
 Response: 245183
 Conc: 772.59 ng/ml



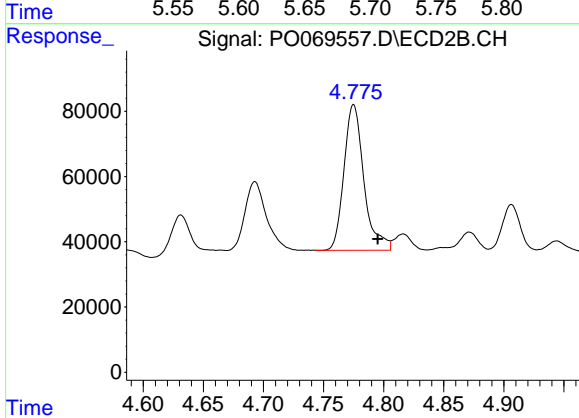
#15 AR-1232-5

R.T.: 5.280 min
 Delta R.T.: 0.002 min
 Response: 120222
 Conc: 229.81 ng/ml

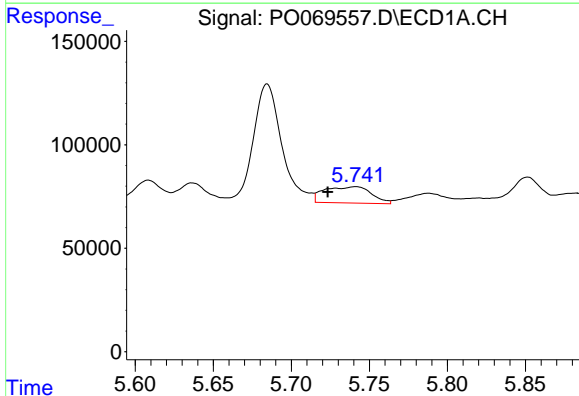


#16 AR-1242-1
 R.T.: 5.684 min
 Delta R.T.: -0.016 min
 Response: 714413
 Conc: 548.12 ng/ml

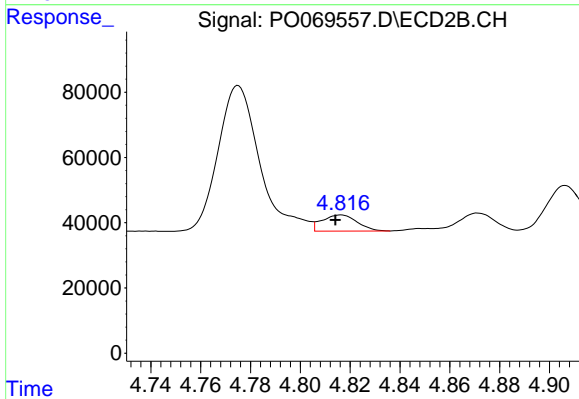
Instrument :
 ECD_O
 ClientSampled :



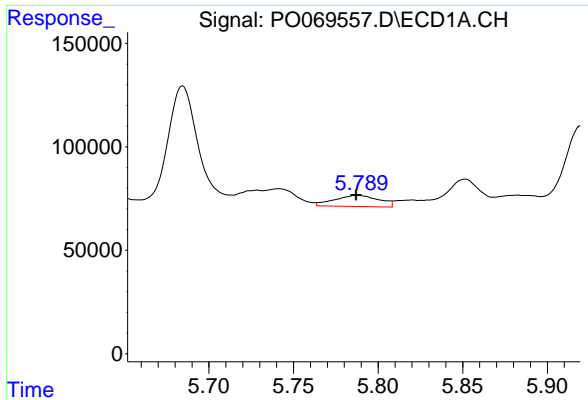
#16 AR-1242-1
 R.T.: 4.775 min
 Delta R.T.: -0.020 min
 Response: 515114
 Conc: 410.82 ng/ml



#17 AR-1242-2
 R.T.: 5.741 min
 Delta R.T.: 0.018 min
 Response: 164304
 Conc: 87.25 ng/ml



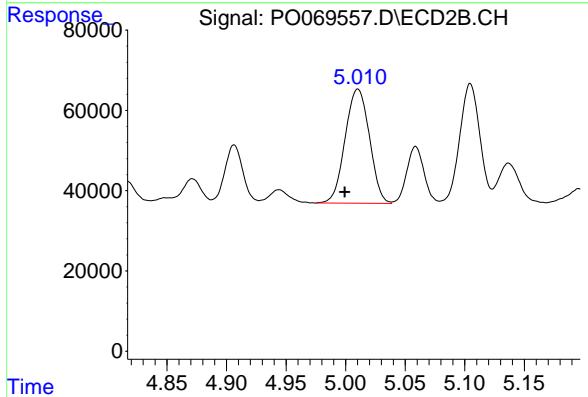
#17 AR-1242-2
 R.T.: 4.816 min
 Delta R.T.: 0.002 min
 Response: 48738
 Conc: 27.90 ng/ml



#18 AR-1242-3

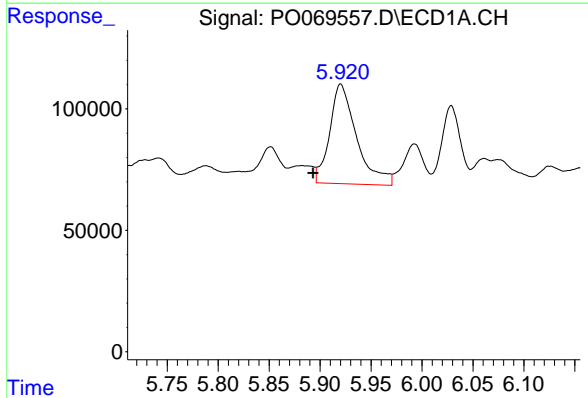
R.T.: 5.788 min
 Delta R.T.: 0.000 min
 Response: 98630
 Conc: 86.85 ng/ml

Instrument :
 ECD_O
 ClientSampled :



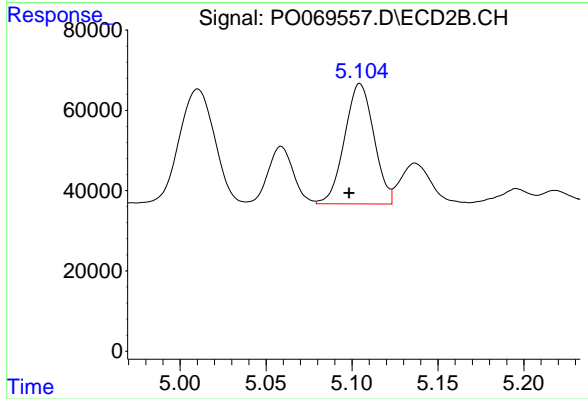
#18 AR-1242-3

R.T.: 5.010 min
 Delta R.T.: 0.011 min
 Response: 404378
 Conc: 420.06 ng/ml



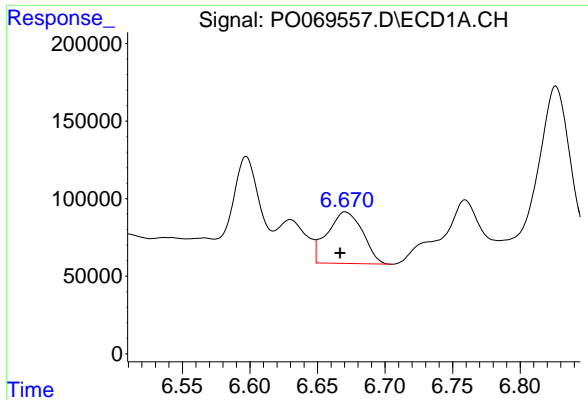
#19 AR-1242-4

R.T.: 5.920 min
 Delta R.T.: 0.027 min
 Response: 754861
 Conc: 786.65 ng/ml



#19 AR-1242-4

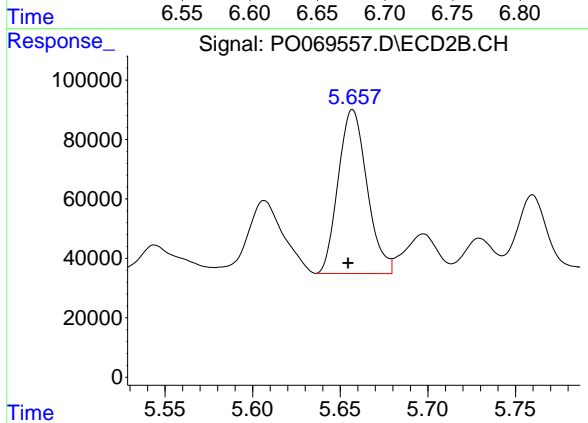
R.T.: 5.105 min
 Delta R.T.: 0.006 min
 Response: 355616
 Conc: 393.09 ng/ml



#20 AR-1242-5

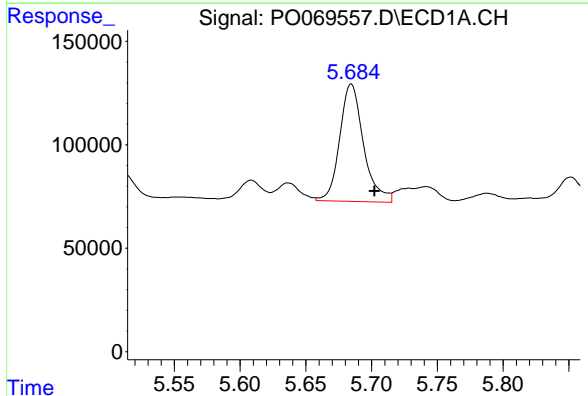
R.T.: 6.671 min
 Delta R.T.: 0.004 min
 Response: 605348
 Conc: 509.93 ng/ml

Instrument :
 ECD_O
 ClientSampled :



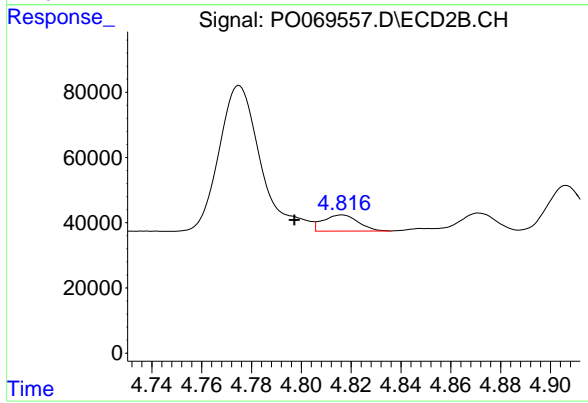
#20 AR-1242-5

R.T.: 5.657 min
 Delta R.T.: 0.003 min
 Response: 632596
 Conc: 499.11 ng/ml



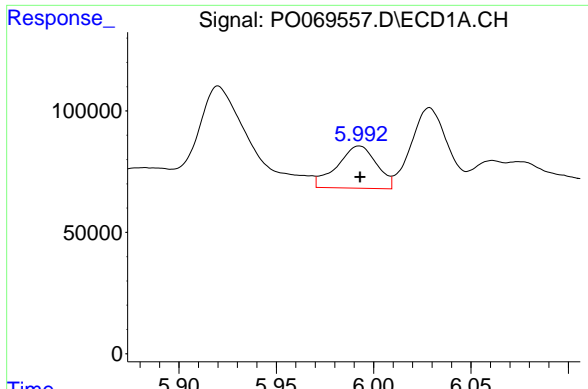
#21 AR-1248-1

R.T.: 5.684 min
 Delta R.T.: -0.018 min
 Response: 714413
 Conc: 731.56 ng/ml



#21 AR-1248-1

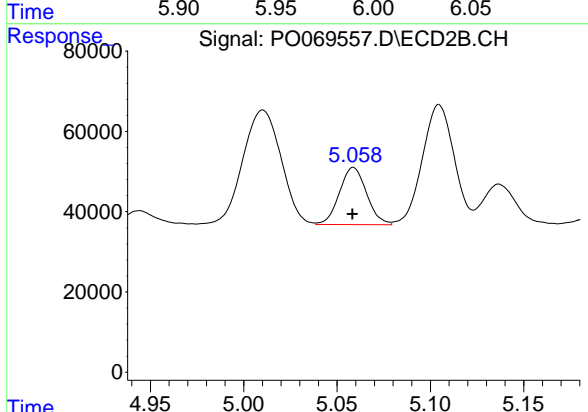
R.T.: 4.816 min
 Delta R.T.: 0.019 min
 Response: 48738
 Conc: 49.80 ng/ml



#22 AR-1248-2

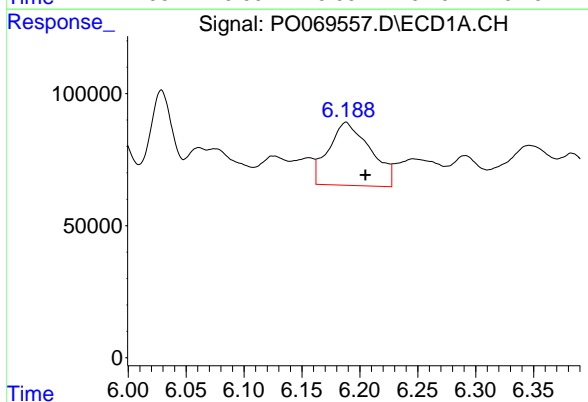
R.T.: 5.993 min
 Delta R.T.: 0.000 min
 Response: 245183
 Conc: 192.57 ng/ml

Instrument :
 ECD_O
 ClientSampled :



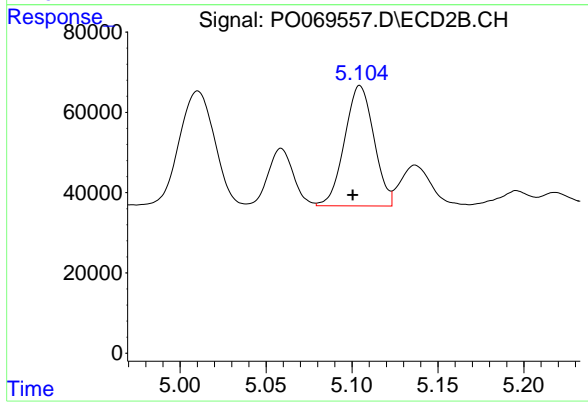
#22 AR-1248-2

R.T.: 5.059 min
 Delta R.T.: 0.000 min
 Response: 144369
 Conc: 106.05 ng/ml



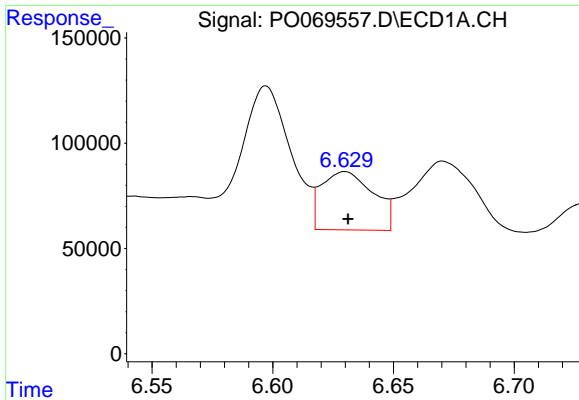
#23 AR-1248-3

R.T.: 6.188 min
 Delta R.T.: -0.016 min
 Response: 600532
 Conc: 379.97 ng/ml



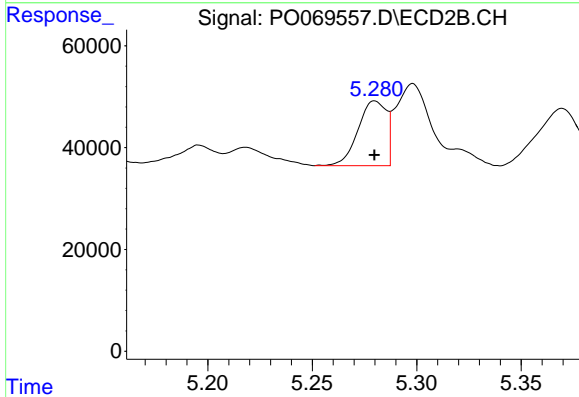
#23 AR-1248-3

R.T.: 5.105 min
 Delta R.T.: 0.004 min
 Response: 355616
 Conc: 281.58 ng/ml

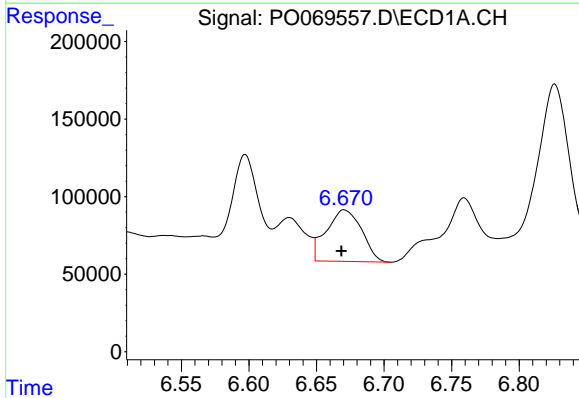


#24 AR-1248-4
 R.T.: 6.630 min
 Delta R.T.: -0.001 min
 Response: 414152
 Conc: 204.11 ng/ml

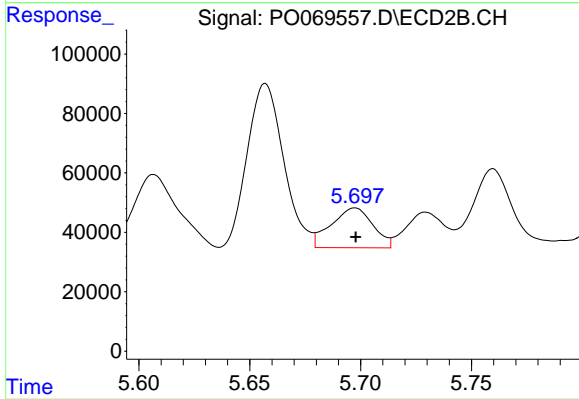
Instrument :
 ECD_O
 ClientSampleId :



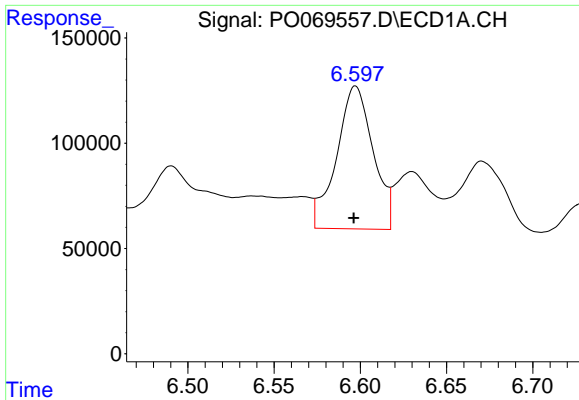
#24 AR-1248-4
 R.T.: 5.280 min
 Delta R.T.: 0.000 min
 Response: 120222
 Conc: 74.01 ng/ml



#25 AR-1248-5
 R.T.: 6.671 min
 Delta R.T.: 0.002 min
 Response: 605348
 Conc: 315.41 ng/ml



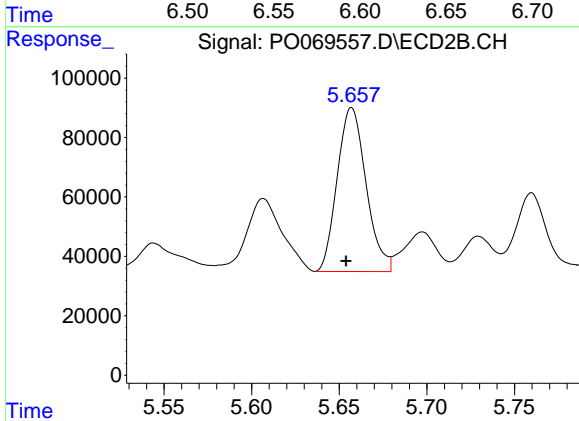
#25 AR-1248-5
 R.T.: 5.698 min
 Delta R.T.: 0.000 min
 Response: 175784
 Conc: 106.52 ng/ml



#26 AR-1254-1

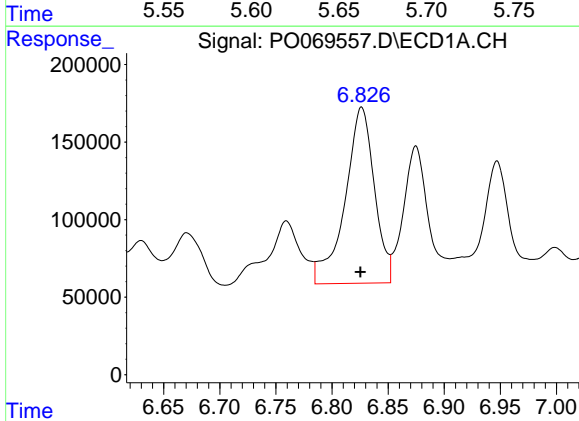
R.T.: 6.597 min
 Delta R.T.: 0.001 min
 Response: 1000893
 Conc: 502.81 ng/ml

Instrument :
 ECD_O
 ClientSampleId :



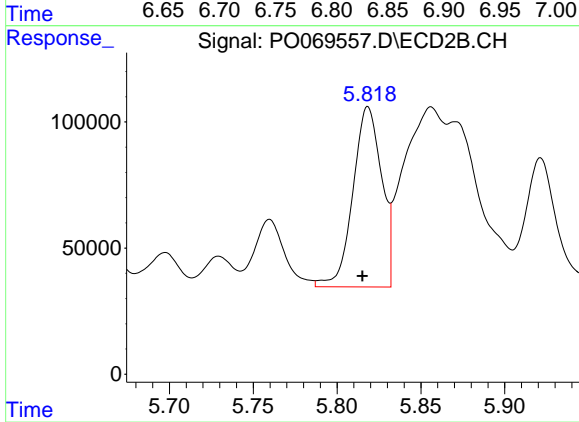
#26 AR-1254-1

R.T.: 5.657 min
 Delta R.T.: 0.003 min
 Response: 632596
 Conc: 243.02 ng/ml



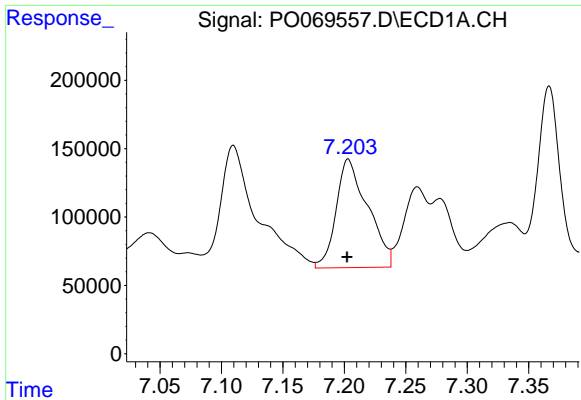
#27 AR-1254-2

R.T.: 6.826 min
 Delta R.T.: 0.001 min
 Response: 2068310
 Conc: 644.29 ng/ml



#27 AR-1254-2

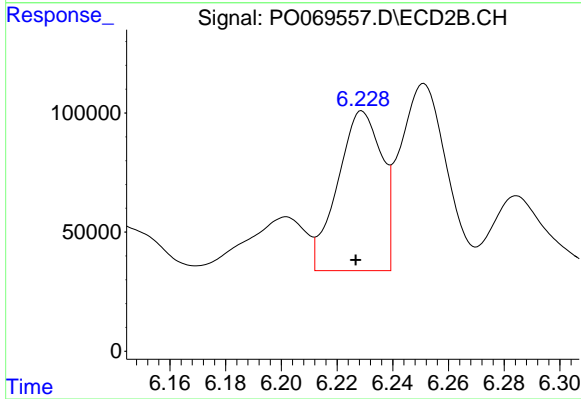
R.T.: 5.818 min
 Delta R.T.: 0.003 min
 Response: 851661
 Conc: 368.91 ng/ml



#28 AR-1254-3

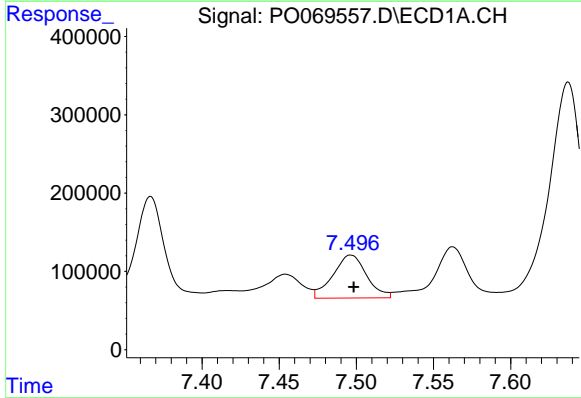
R.T.: 7.203 min
 Delta R.T.: 0.001 min
 Response: 1419433
 Conc: 404.16 ng/ml

Instrument :
 ECD_O
 ClientSampled :



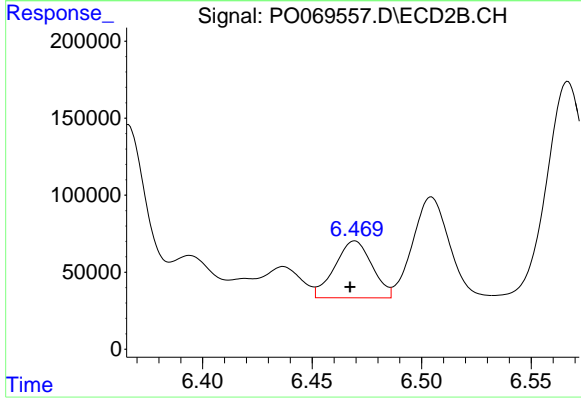
#28 AR-1254-3

R.T.: 6.229 min
 Delta R.T.: 0.002 min
 Response: 734420
 Conc: 195.56 ng/ml



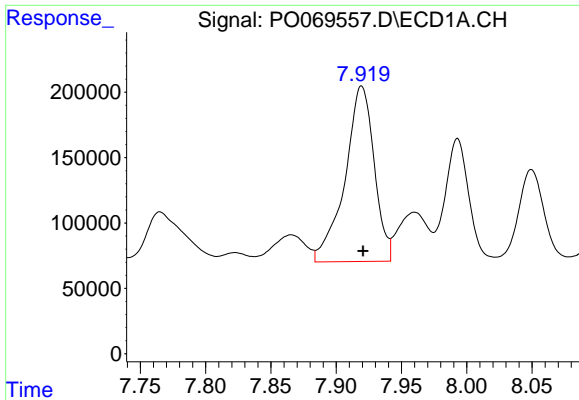
#29 AR-1254-4

R.T.: 7.496 min
 Delta R.T.: -0.002 min
 Response: 830551
 Conc: 277.51 ng/ml



#29 AR-1254-4

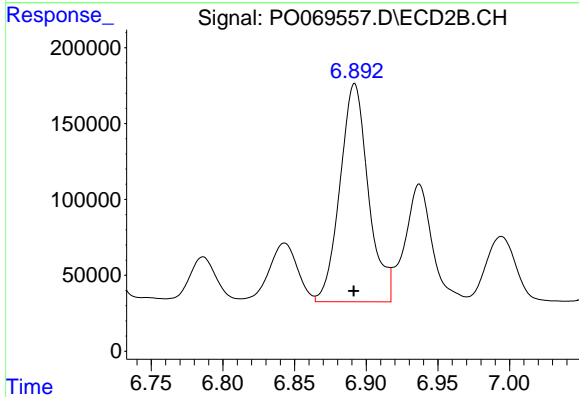
R.T.: 6.469 min
 Delta R.T.: 0.002 min
 Response: 437363
 Conc: 173.07 ng/ml



#30 AR-1254-5

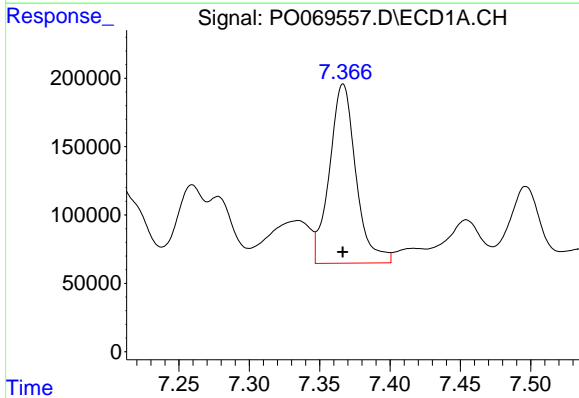
R.T.: 7.919 min
 Delta R.T.: -0.001 min
 Response: 2093543
 Conc: 695.81 ng/ml

Instrument :
 ECD_O
 ClientSampled :



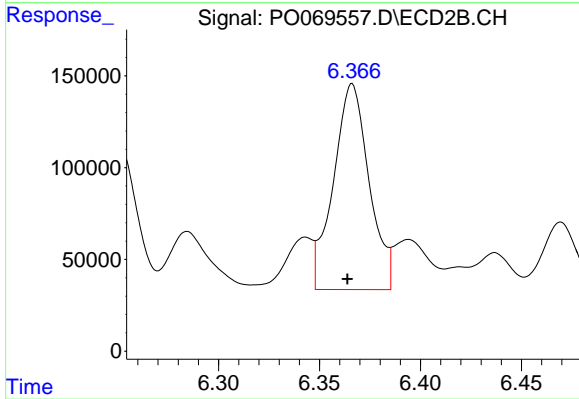
#30 AR-1254-5

R.T.: 6.892 min
 Delta R.T.: 0.000 min
 Response: 1986056
 Conc: 553.38 ng/ml



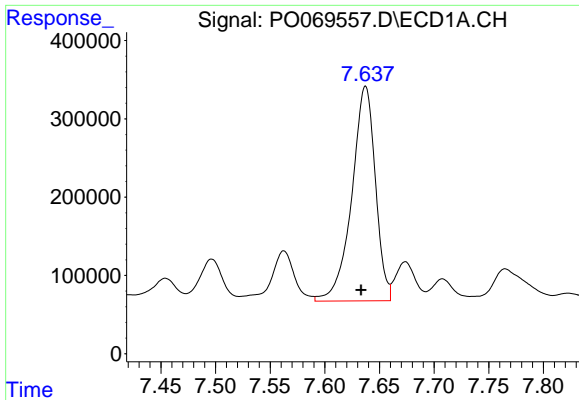
#31 AR-1260-1

R.T.: 7.367 min
 Delta R.T.: 0.000 min
 Response: 1714607
 Conc: 652.09 ng/ml



#31 AR-1260-1

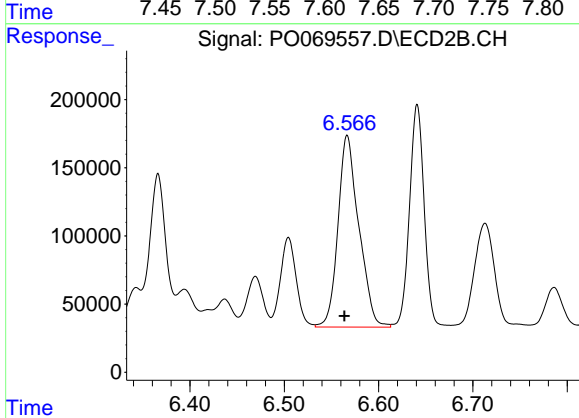
R.T.: 6.366 min
 Delta R.T.: 0.002 min
 Response: 1380127
 Conc: 523.26 ng/ml



#32 AR-1260-2

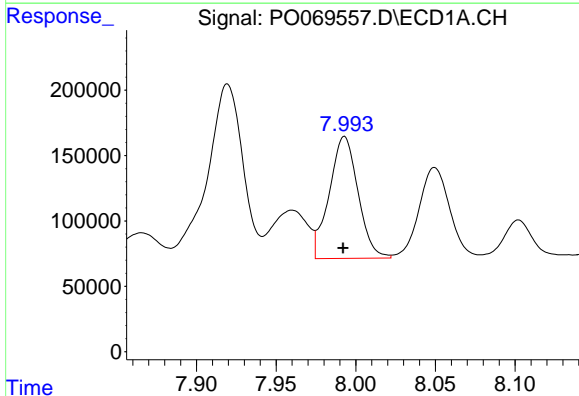
R.T.: 7.637 min
 Delta R.T.: 0.004 min
 Response: 4122129
 Conc: 1162.01 ng/ml

Instrument :
 ECD_O
 ClientSampled :



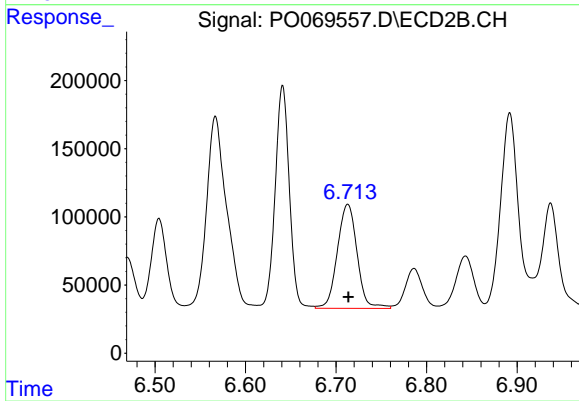
#32 AR-1260-2

R.T.: 6.567 min
 Delta R.T.: 0.003 min
 Response: 2160725
 Conc: 660.14 ng/ml



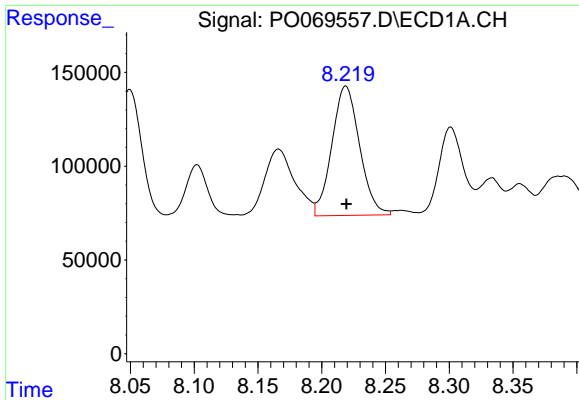
#33 AR-1260-3

R.T.: 7.993 min
 Delta R.T.: 0.000 min
 Response: 1174822
 Conc: 406.37 ng/ml



#33 AR-1260-3

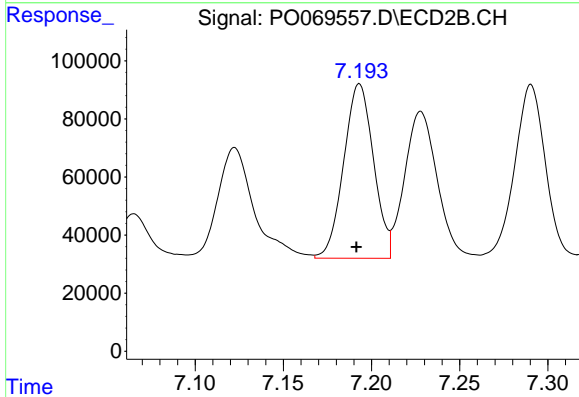
R.T.: 6.713 min
 Delta R.T.: 0.000 min
 Response: 1154624
 Conc: 379.23 ng/ml



#34 AR-1260-4

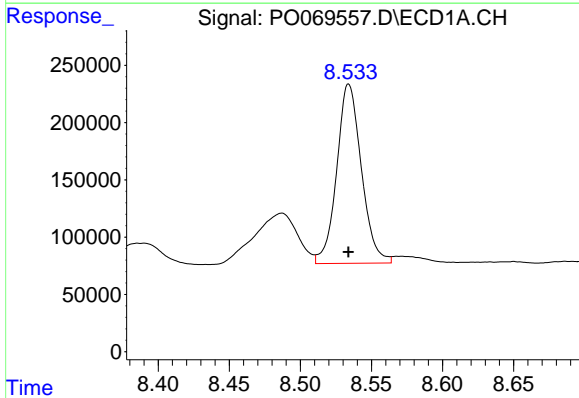
R.T.: 8.219 min
 Delta R.T.: 0.000 min
 Response: 1044825
 Conc: 352.75 ng/ml

Instrument :
 ECD_O
 ClientSampled :



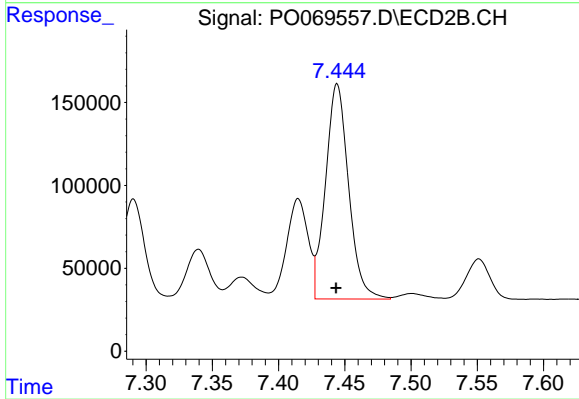
#34 AR-1260-4

R.T.: 7.193 min
 Delta R.T.: 0.002 min
 Response: 707749
 Conc: 261.47 ng/ml



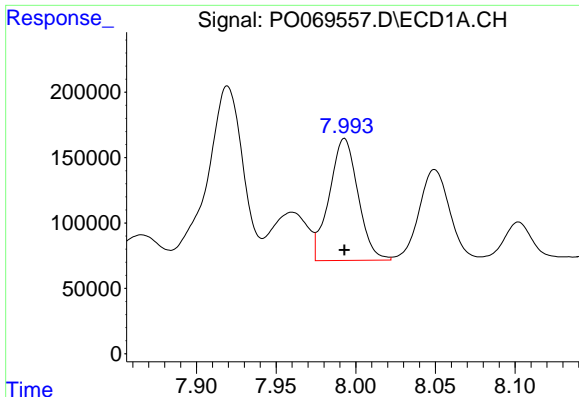
#35 AR-1260-5

R.T.: 8.534 min
 Delta R.T.: 0.000 min
 Response: 1890957
 Conc: 279.46 ng/ml



#35 AR-1260-5

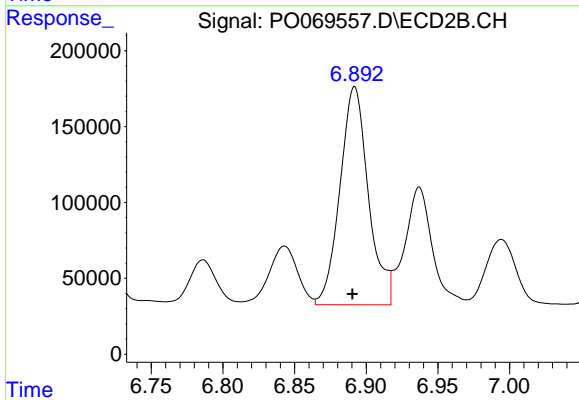
R.T.: 7.444 min
 Delta R.T.: 0.000 min
 Response: 1573797
 Conc: 245.58 ng/ml



#36 AR-1262-1

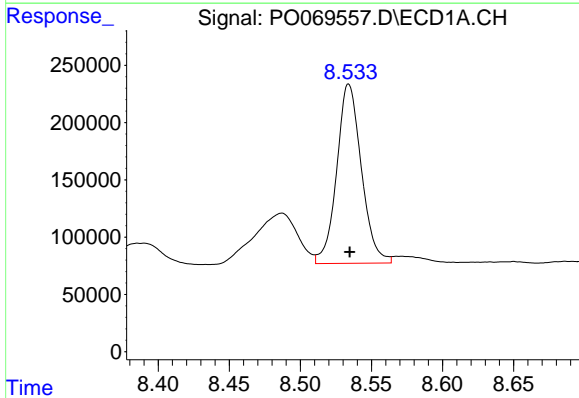
R.T.: 7.993 min
 Delta R.T.: 0.000 min
 Response: 1174822
 Conc: 295.22 ng/ml

Instrument :
 ECD_O
 ClientSampled :



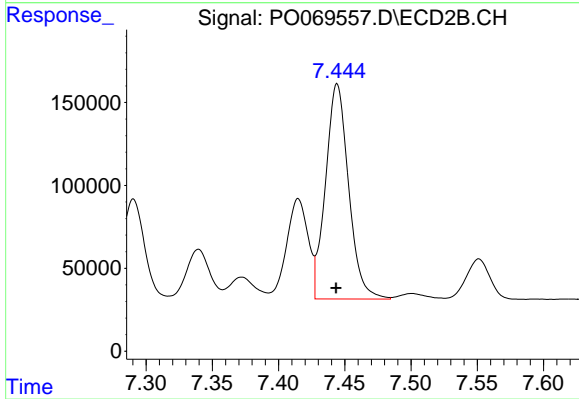
#36 AR-1262-1

R.T.: 6.892 min
 Delta R.T.: 0.001 min
 Response: 1986056
 Conc: 1028.51 ng/ml



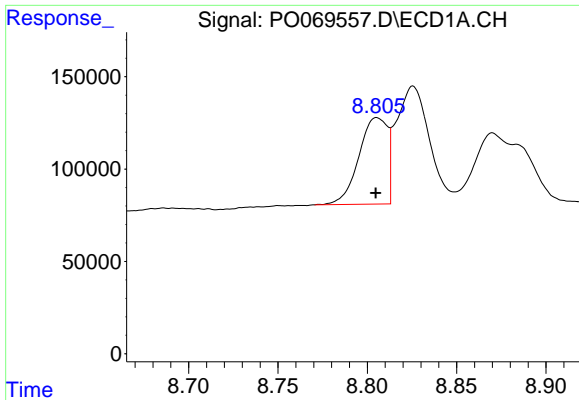
#37 AR-1262-2

R.T.: 8.534 min
 Delta R.T.: 0.000 min
 Response: 1890957
 Conc: 261.97 ng/ml



#37 AR-1262-2

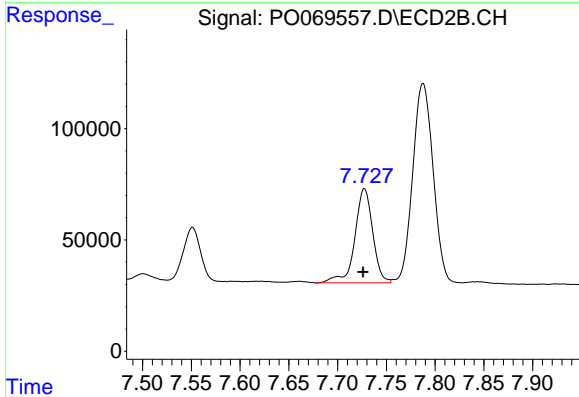
R.T.: 7.444 min
 Delta R.T.: 0.000 min
 Response: 1573797
 Conc: 241.04 ng/ml



#38 AR-1262-3

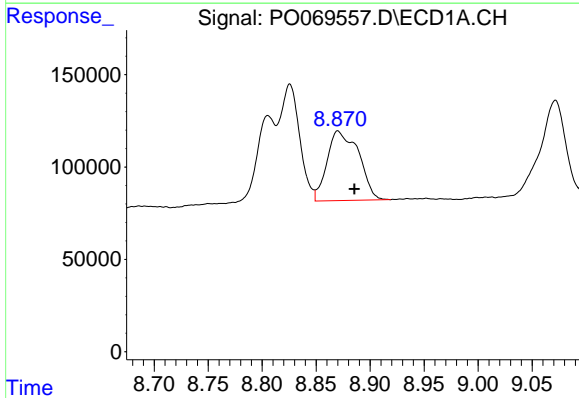
R.T.: 8.805 min
 Delta R.T.: 0.000 min
 Response: 520069
 Conc: 108.61 ng/ml

Instrument :
 ECD_O
 ClientSampleId :



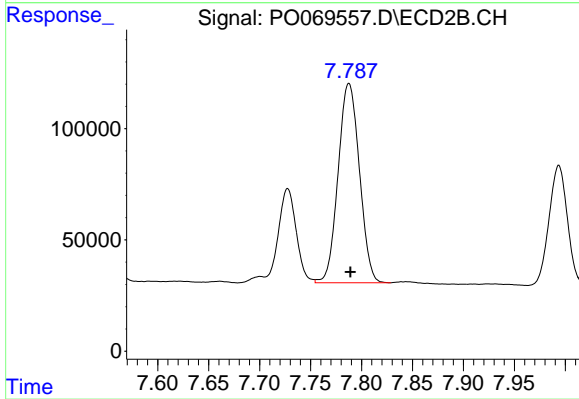
#38 AR-1262-3

R.T.: 7.728 min
 Delta R.T.: 0.001 min
 Response: 538294
 Conc: 199.73 ng/ml



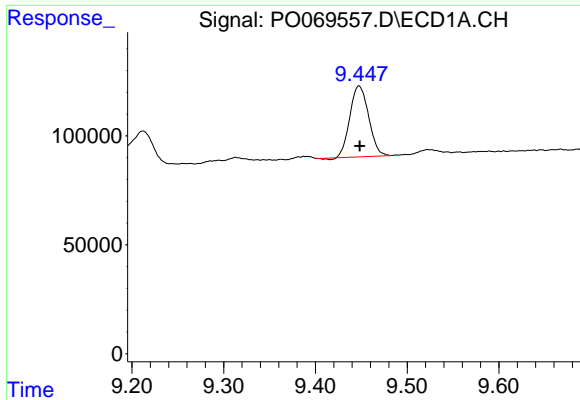
#39 AR-1262-4

R.T.: 8.870 min
 Delta R.T.: -0.015 min
 Response: 767651
 Conc: 396.02 ng/ml



#39 AR-1262-4

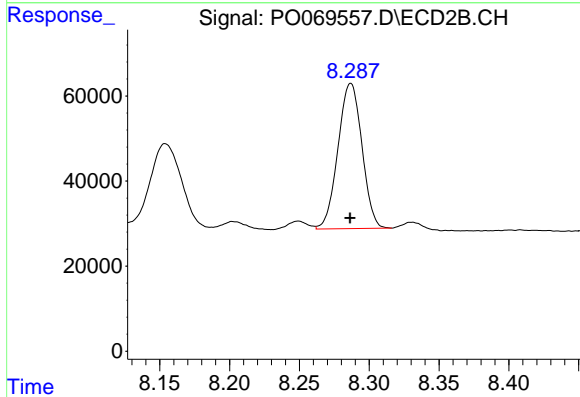
R.T.: 7.788 min
 Delta R.T.: -0.002 min
 Response: 1303955
 Conc: 261.88 ng/ml



#40 AR-1262-5

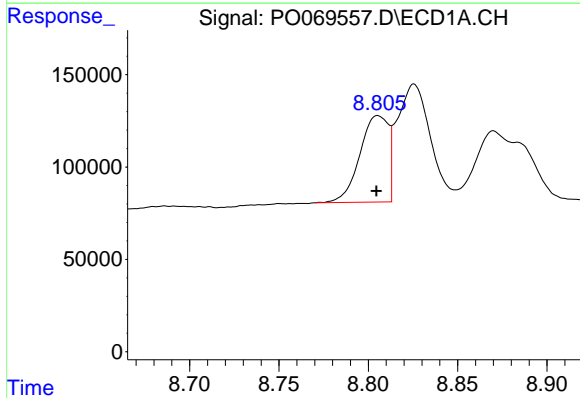
R.T.: 9.448 min
 Delta R.T.: 0.000 min
 Response: 459316
 Conc: 176.11 ng/ml

Instrument :
 ECD_O
 ClientSampleId :



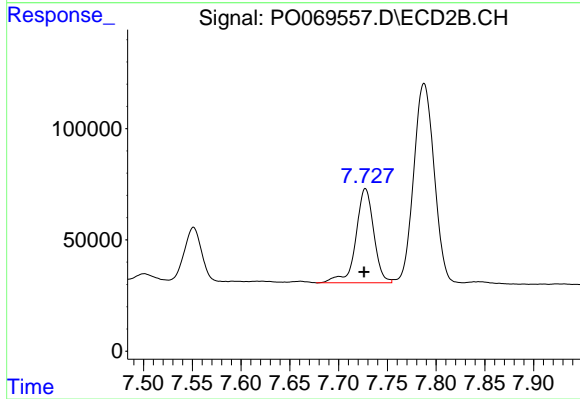
#40 AR-1262-5

R.T.: 8.287 min
 Delta R.T.: 0.000 min
 Response: 407993
 Conc: 164.19 ng/ml



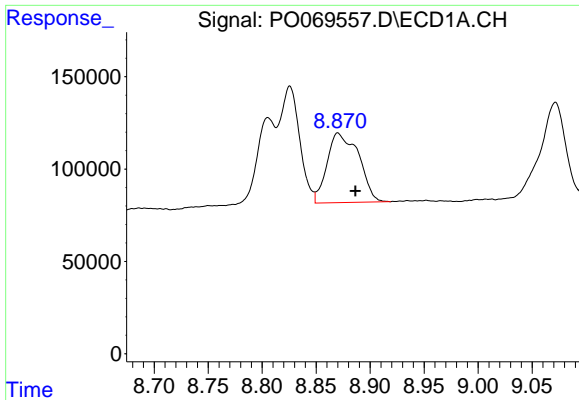
#41 AR-1268-1

R.T.: 8.805 min
 Delta R.T.: 0.000 min
 Response: 520069
 Conc: 56.74 ng/ml



#41 AR-1268-1

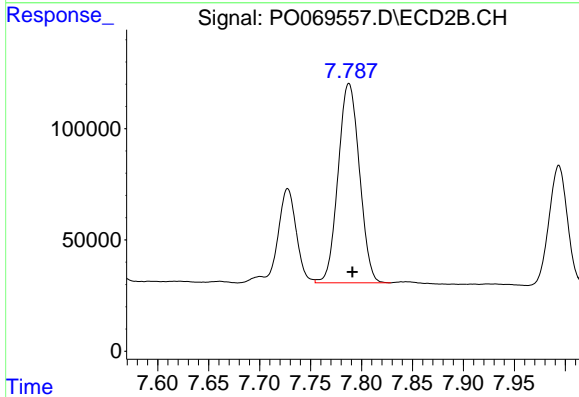
R.T.: 7.728 min
 Delta R.T.: 0.001 min
 Response: 538294
 Conc: 68.76 ng/ml



#42 AR-1268-2

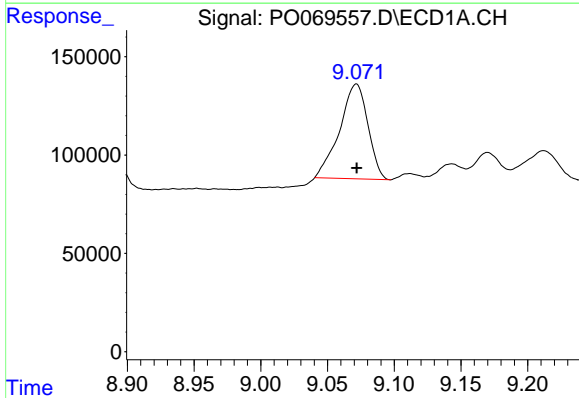
R.T.: 8.870 min
 Delta R.T.: -0.016 min
 Response: 767651
 Conc: 92.62 ng/ml

Instrument :
 ECD_O
 ClientSampled :



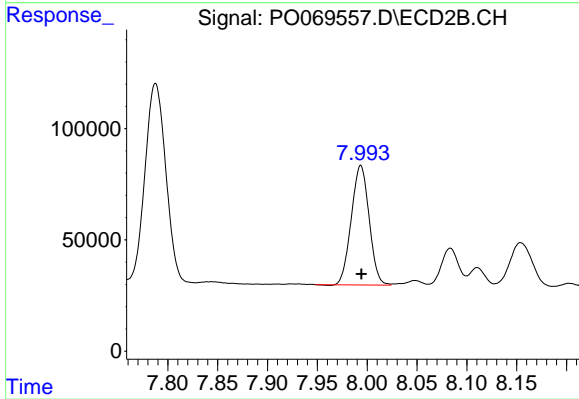
#42 AR-1268-2

R.T.: 7.788 min
 Delta R.T.: -0.004 min
 Response: 1303955
 Conc: 182.55 ng/ml



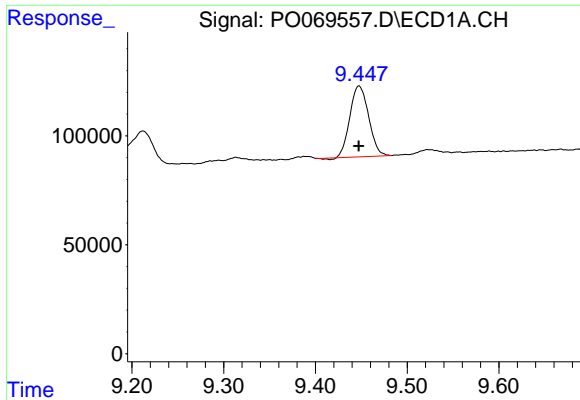
#43 AR-1268-3

R.T.: 9.072 min
 Delta R.T.: 0.000 min
 Response: 710489
 Conc: 100.41 ng/ml



#43 AR-1268-3

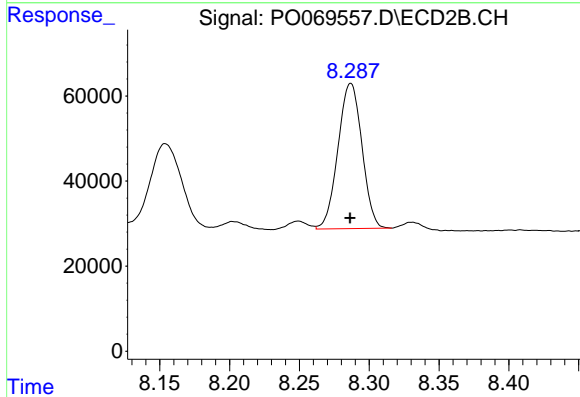
R.T.: 7.994 min
 Delta R.T.: 0.000 min
 Response: 668911
 Conc: 112.02 ng/ml



#44 AR-1268-4

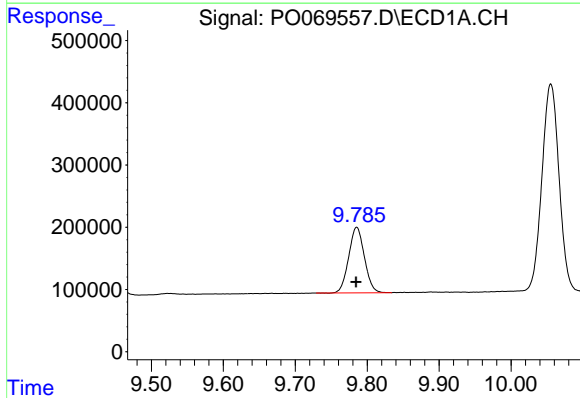
R.T.: 9.448 min
 Delta R.T.: 0.000 min
 Response: 459316
 Conc: 151.54 ng/ml

Instrument :
 ECD_O
 ClientSampled :



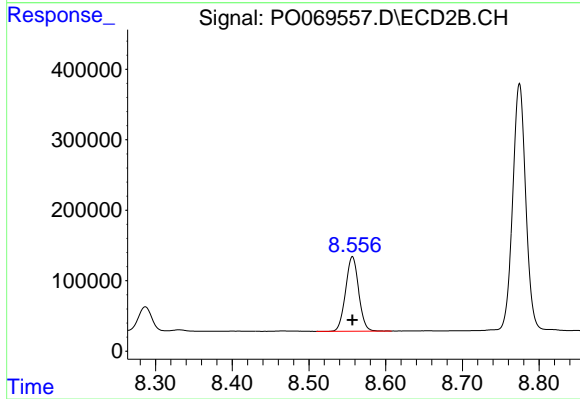
#44 AR-1268-4

R.T.: 8.287 min
 Delta R.T.: 0.000 min
 Response: 407993
 Conc: 141.07 ng/ml



#45 AR-1268-5

R.T.: 9.785 min
 Delta R.T.: 0.000 min
 Response: 1597616
 Conc: 71.92 ng/ml



#45 AR-1268-5

R.T.: 8.557 min
 Delta R.T.: 0.000 min
 Response: 1254368
 Conc: 65.05 ng/ml