

Data Path : Z:\pestpcbsrv\HPCHEM1\ECD_0\Data\P0071320\
 Data File : P0069567.D
 Signal(s) : Signal #1: ECD1A.CH Signal #2: ECD2B.CH
 Acq On : 13 Jul 2020 14:13
 Operator : DD\AJ
 Sample : L3274-10DL 10X
 Misc :
 ALS Vial : 15 Sample Multiplier: 1

Instrument :
 ECD_0
 ClientSampleId :

Integration File signal 1: autoint1.e
 Integration File signal 2: autoint2.e
 Quant Time: Jul 13 16:26:44 2020
 Quant Method : Z:\pestpcbsrv\HPCHEM1\ECD_0\methods\P0070820.M
 Quant Title : GC EXTRACTABLES
 QLast Update : Wed Jul 08 16:12:41 2020
 Response via : Initial Calibration
 Integrator: ChemStation 6890 Scale Mode: Small noise peaks clipped

Volume Inj. : 2 µl
 Signal #1 Phase : ZB-MR1 Signal #2 Phase: ZB-MR2
 Signal #1 Info : 30Mx0.32mmx 0.50µ Signal #2 Info : 30M x 0.32mm x 0.25µm

Compound	RT#1	RT#2	Resp#1	Resp#2	ng/ml	ng/ml
System Monitoring Compounds						
1) SA Tetrachlo...	4.393	3.565	96689	105781	2.590	2.658
2) SA Decachlor...	10.055	8.773	562703	550716	9.352	9.704
Target Compounds						
6) L1 AR-1016-4	0.000	5.059	0	121742	N.D.	111.482 #
7) L1 AR-1016-5	6.204	5.280	82010	87322	62.242	63.481
14) L3 AR-1232-4	0.000	5.101	0	56013	N.D.	127.758 #
15) L3 AR-1232-5	5.992	5.280	111852	87322	352.454	166.919 #
19) L4 AR-1242-4	0.000	5.101	0	56013	N.D.	61.916 #
20) L4 AR-1242-5	6.668	5.656	333187	736429	280.666	581.031 #
22) L5 AR-1248-2	5.992	5.059	111852	121742	87.849	89.426
23) L5 AR-1248-3	6.204	5.101	82010	56013	51.890	44.352
24) L5 AR-1248-4	6.631	5.280	387633	87322	191.039	53.758 #
25) L5 AR-1248-5	6.668	5.698	333187	251370	173.603	152.328
26) L6 AR-1254-1	6.597	5.656	541502	736429	272.032	282.906
27) L6 AR-1254-2	6.826	5.817	1261514	938426	392.965	406.496
28) L6 AR-1254-3	7.203	6.228	1551421	1851812	441.737	493.092
29) L6 AR-1254-4	7.498	6.470	1518794	1247737	507.470	493.736
30) L6 AR-1254-5	7.919	6.893	2754662	2800609	915.537	780.342
31) L7 AR-1260-1	7.366	6.366	1155747	1360157	439.546	515.685
32) L7 AR-1260-2	7.634	6.566	1799556	1580955	507.288	483.006
33) L7 AR-1260-3	7.991	6.713	818410	1258051	283.090	413.202 #
34) L7 AR-1260-4	8.216	7.193	1254877	614059	423.668	226.859 #
35) L7 AR-1260-5	8.534	7.444	1443060	1313450	213.269	204.950
36) L8 AR-1262-1	7.991	6.893	818410	2800609	205.658	1450.342 #
37) L8 AR-1262-2	8.534	7.444	1443060	1313450	199.922	201.164
38) L8 AR-1262-3	8.804	7.727	249841	299298	52.178	111.055 #
39) L8 AR-1262-4	8.869f	7.786	473241	1078791	244.139	216.661
40) L8 AR-1262-5	9.447	8.287	261710	253215	100.344	101.902
41) L9 AR-1268-1	8.804	7.727	249841	299298	27.256	38.234 #
42) L9 AR-1268-2	8.869f	7.786	473241	1078791	57.095	151.028 #
43) L9 AR-1268-3	9.071	7.994	113717	119231	16.070	19.967
44) L9 AR-1268-4	9.447	8.287	261710	253215	86.347	87.556
45) L9 AR-1268-5	9.786	8.556	307241	304033	13.831	15.767

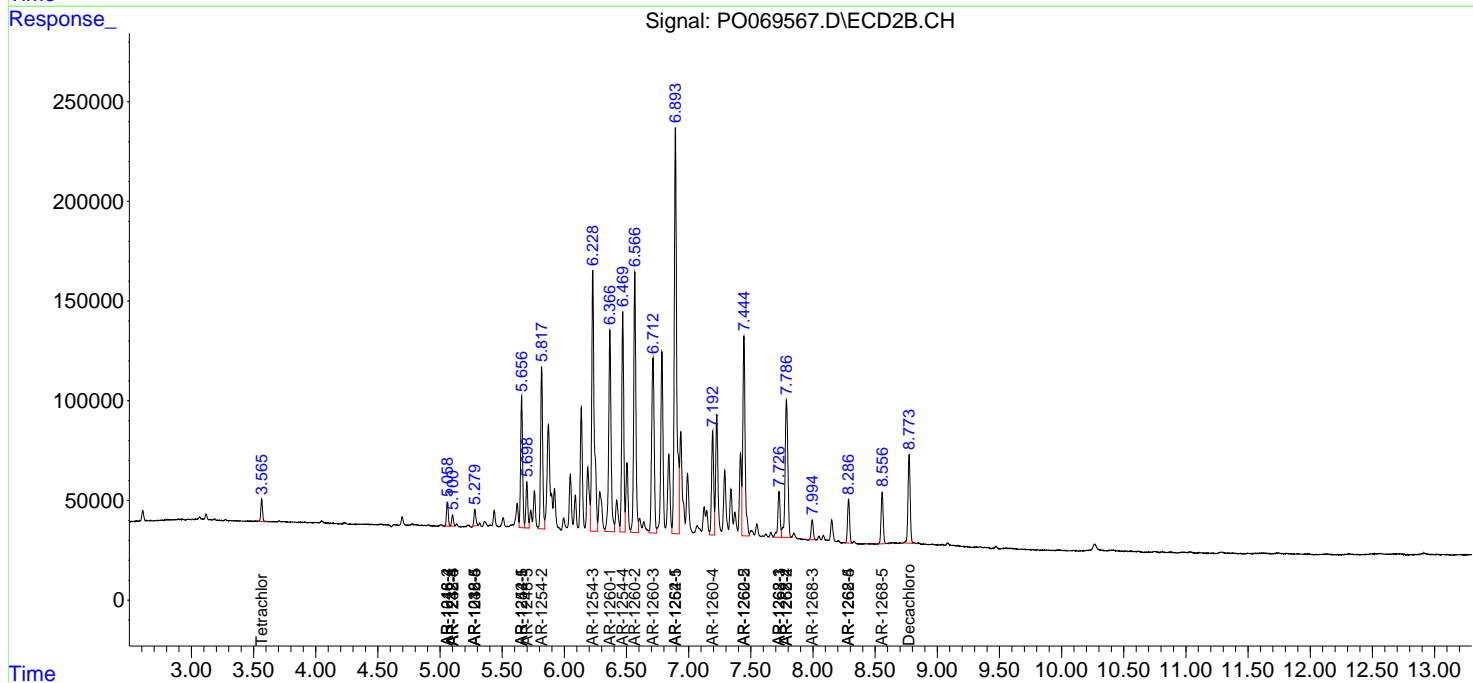
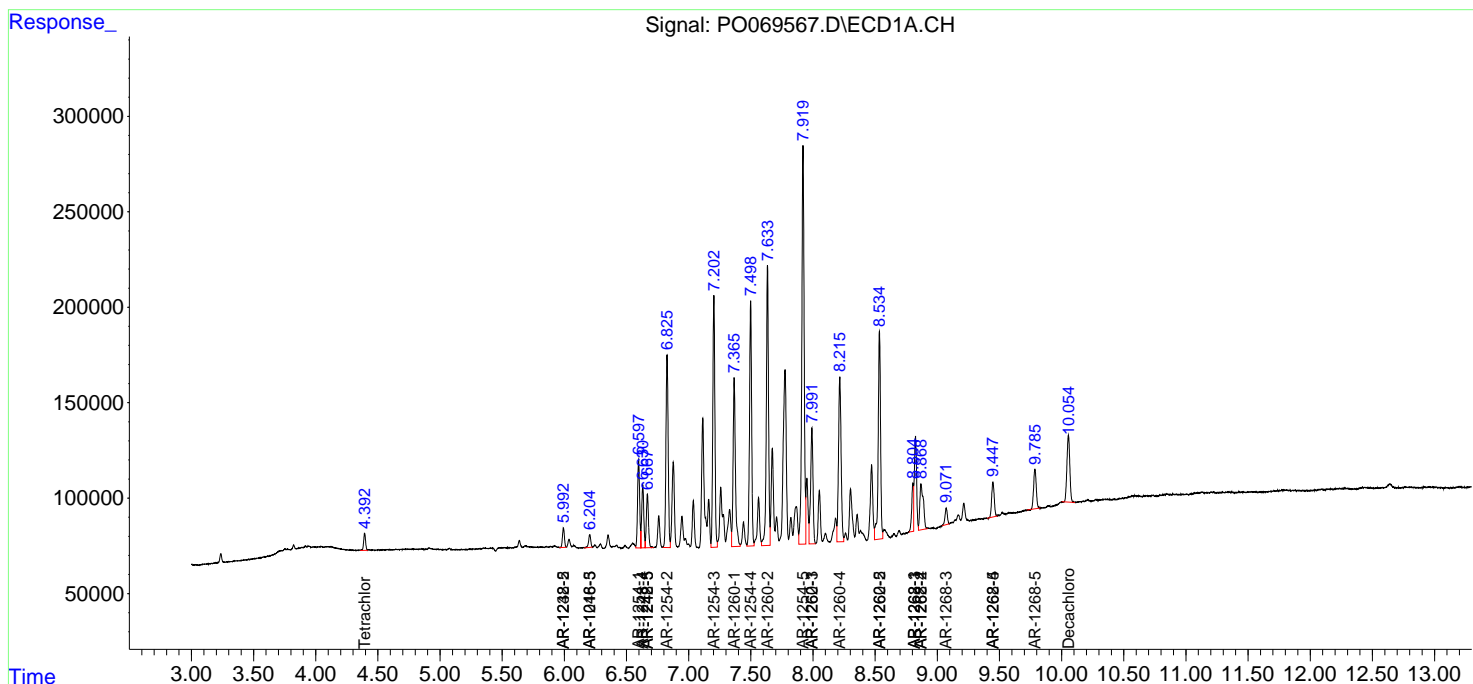
(f)=RT Delta > 1/2 Window (#)=Amounts differ by > 25% (m)=manual int.

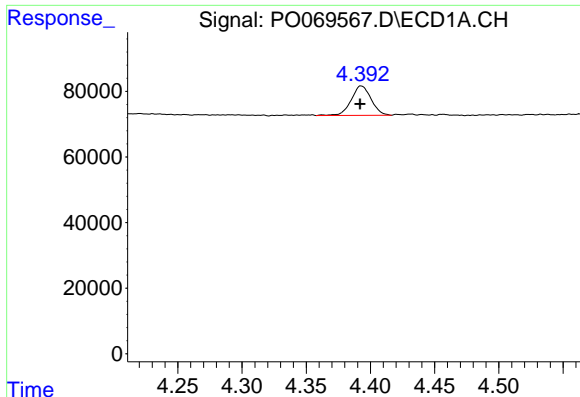
Data Path : Z:\pestpcbsrv\HPCHEM1\ECD_O\Data\P0071320\
 Data File : P0069567.D
 Signal(s) : Signal #1: ECD1A.CH Signal #2: ECD2B.CH
 Acq On : 13 Jul 2020 14:13
 Operator : DD\AJ
 Sample : L3274-10DL 10X
 Misc :
 ALS Vial : 15 Sample Multiplier: 1

Instrument :
 ECD_O
 ClientSampled :

Integration File signal 1: autoint1.e
 Integration File signal 2: autoint2.e
 Quant Time: Jul 13 16:26:44 2020
 Quant Method : Z:\pestpcbsrv\HPCHEM1\ECD_O\methods\P0070820.M
 Quant Title : GC EXTRACTABLES
 QLast Update : Wed Jul 08 16:12:41 2020
 Response via : Initial Calibration
 Integrator: ChemStation 6890 Scale Mode: Small noise peaks clipped

Volume Inj. : 2 µl
 Signal #1 Phase : ZB-MR1 Signal #2 Phase: ZB-MR2
 Signal #1 Info : 30Mx0.32mmx 0.50µ Signal #2 Info : 30M x 0.32mm x 0.25µm

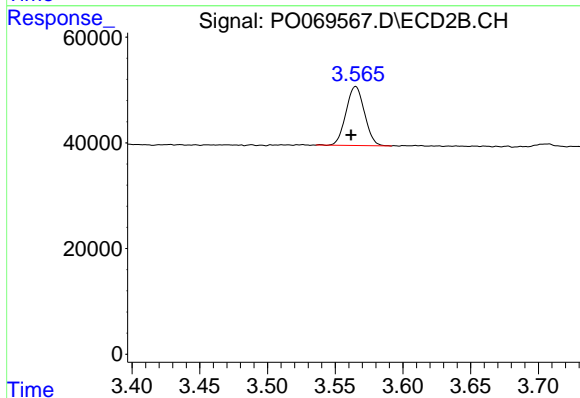




#1 Tetrachloro-m-xylene

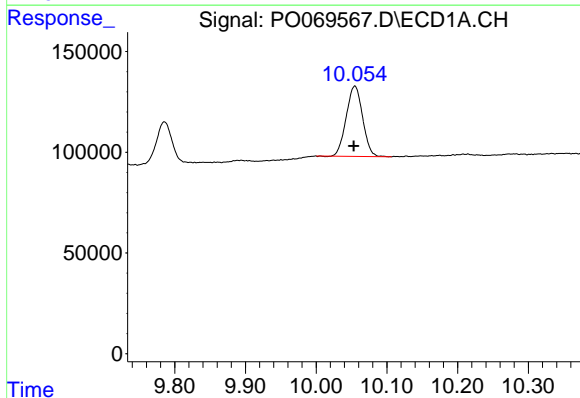
R.T.: 4.393 min
 Delta R.T.: 0.000 min
 Response: 96689
 Conc: 2.59 ng/ml

Instrument :
 ECD_O
 ClientSampleId :



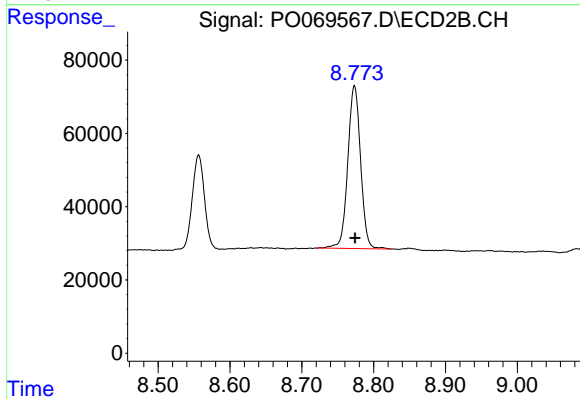
#1 Tetrachloro-m-xylene

R.T.: 3.565 min
 Delta R.T.: 0.004 min
 Response: 105781
 Conc: 2.66 ng/ml



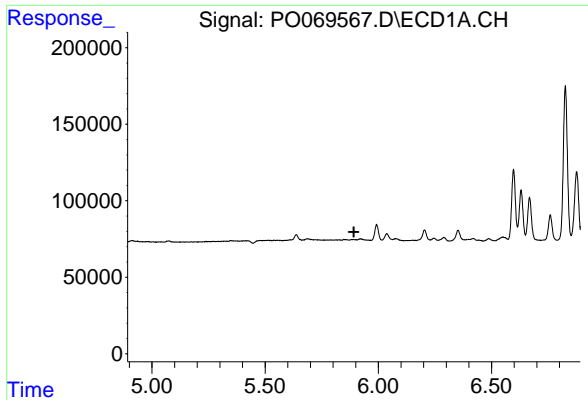
#2 Decachlorobiphenyl

R.T.: 10.055 min
 Delta R.T.: 0.001 min
 Response: 562703
 Conc: 9.35 ng/ml



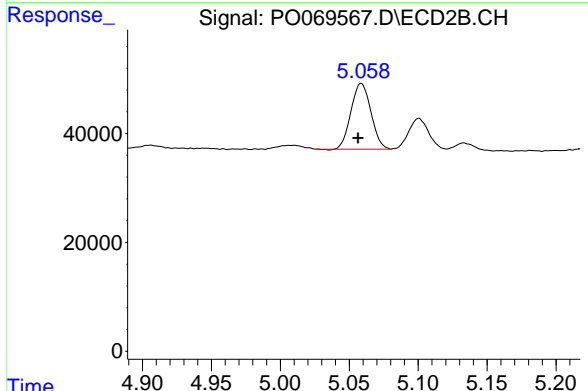
#2 Decachlorobiphenyl

R.T.: 8.773 min
 Delta R.T.: 0.000 min
 Response: 550716
 Conc: 9.70 ng/ml

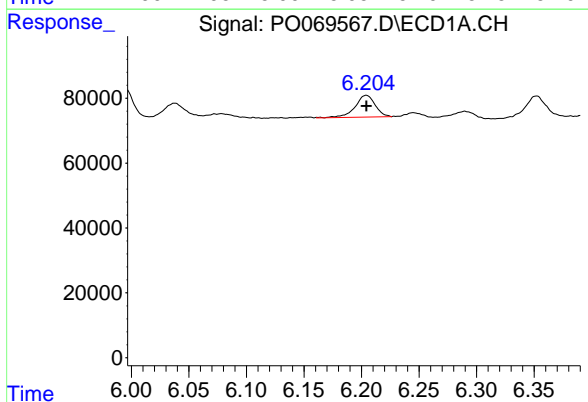


#6 AR-1016-4
 R.T.: 0.000 min
 Exp R.T.: 5.892 min
 Response: 0
 Conc: N.D.

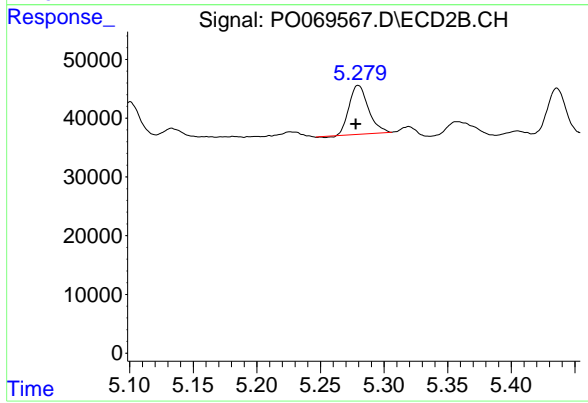
Instrument :
 ECD_O
 ClientSampled :



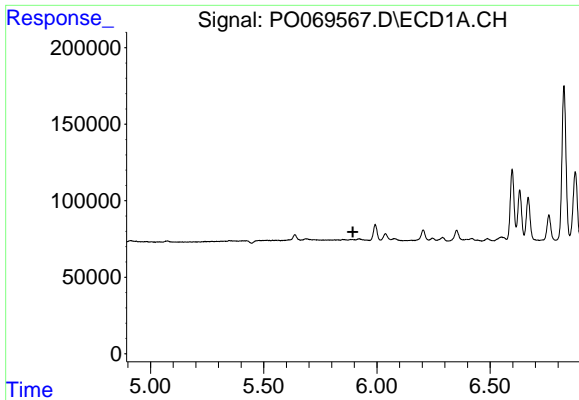
#6 AR-1016-4
 R.T.: 5.059 min
 Delta R.T.: 0.002 min
 Response: 121742
 Conc: 111.48 ng/ml



#7 AR-1016-5
 R.T.: 6.204 min
 Delta R.T.: 0.000 min
 Response: 82010
 Conc: 62.24 ng/ml



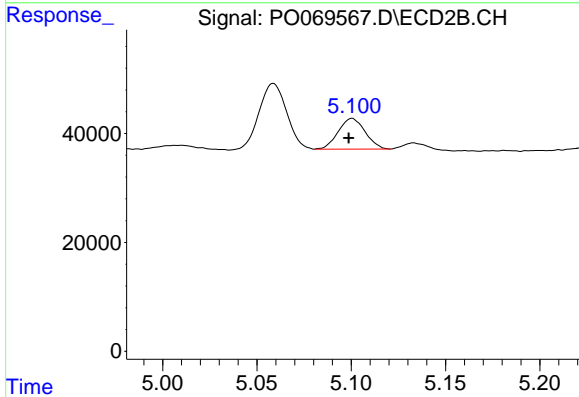
#7 AR-1016-5
 R.T.: 5.280 min
 Delta R.T.: 0.002 min
 Response: 87322
 Conc: 63.48 ng/ml



#14 AR-1232-4

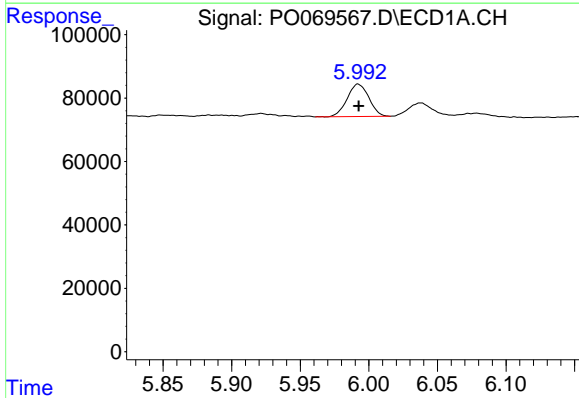
R.T.: 0.000 min
 Exp R.T.: 5.894 min
 Response: 0
 Conc: N.D.

Instrument :
 ECD_O
 ClientSampled :



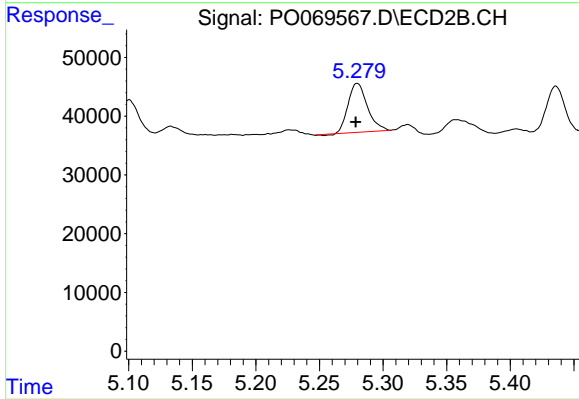
#14 AR-1232-4

R.T.: 5.101 min
 Delta R.T.: 0.002 min
 Response: 56013
 Conc: 127.76 ng/ml



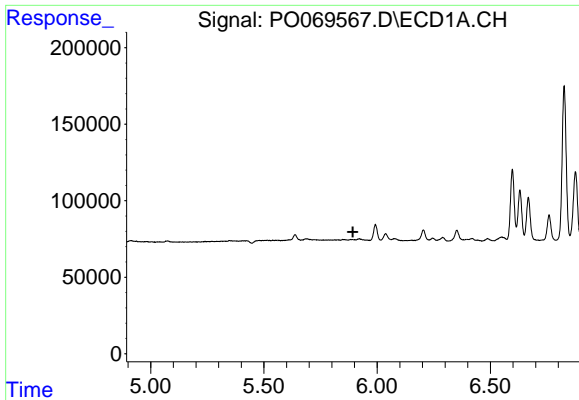
#15 AR-1232-5

R.T.: 5.992 min
 Delta R.T.: 0.000 min
 Response: 111852
 Conc: 352.45 ng/ml



#15 AR-1232-5

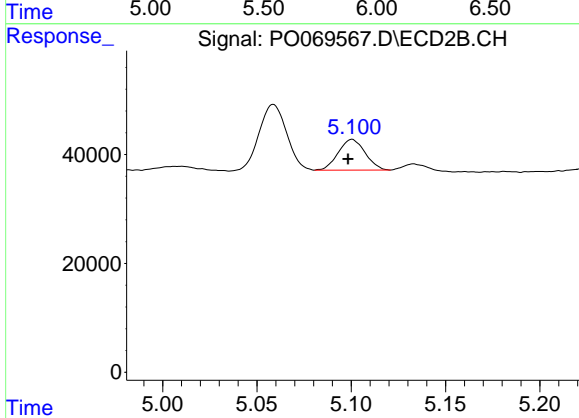
R.T.: 5.280 min
 Delta R.T.: 0.001 min
 Response: 87322
 Conc: 166.92 ng/ml



#19 AR-1242-4

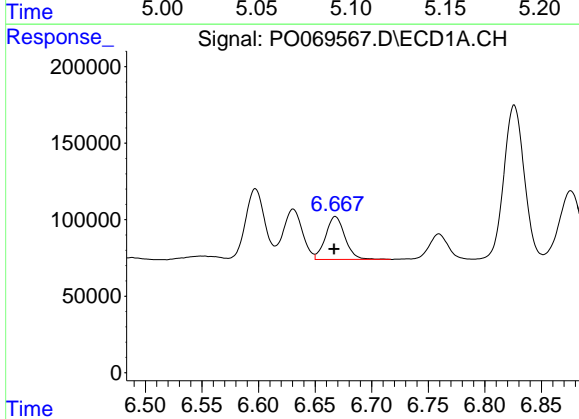
R.T.: 0.000 min
 Exp R.T.: 5.893 min
 Response: 0
 Conc: N.D.

Instrument :
 ECD_O
 ClientSampleId :



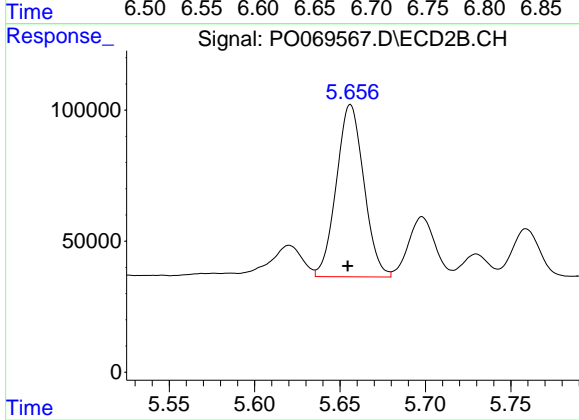
#19 AR-1242-4

R.T.: 5.101 min
 Delta R.T.: 0.002 min
 Response: 56013
 Conc: 61.92 ng/ml



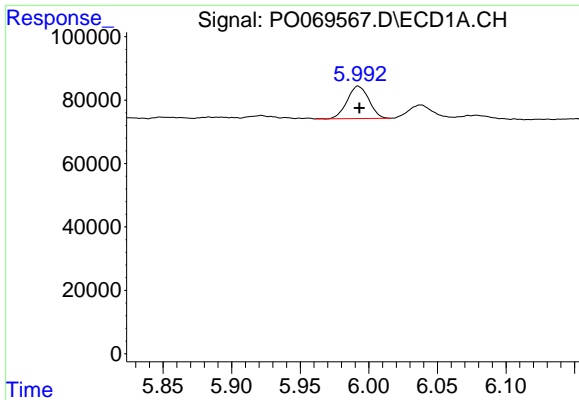
#20 AR-1242-5

R.T.: 6.668 min
 Delta R.T.: 0.001 min
 Response: 333187
 Conc: 280.67 ng/ml



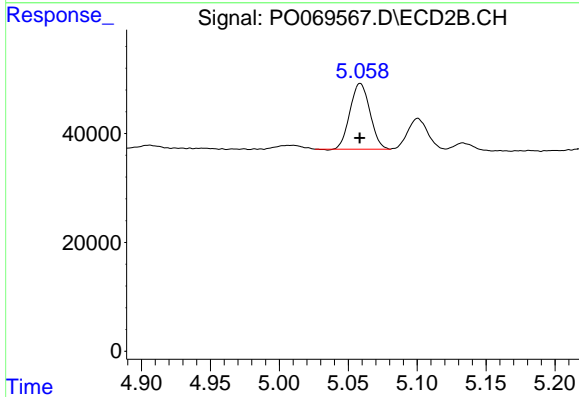
#20 AR-1242-5

R.T.: 5.656 min
 Delta R.T.: 0.002 min
 Response: 736429
 Conc: 581.03 ng/ml

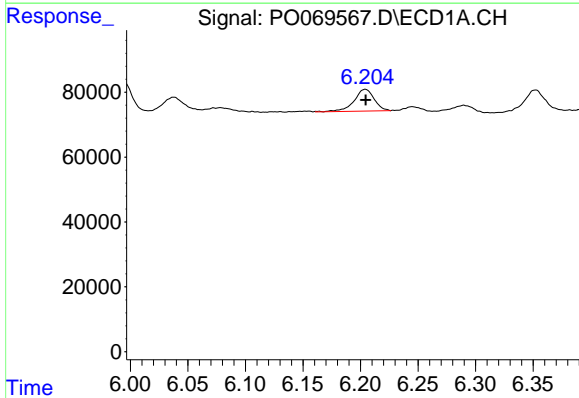


#22 AR-1248-2
 R.T.: 5.992 min
 Delta R.T.: 0.000 min
 Response: 111852
 Conc: 87.85 ng/ml

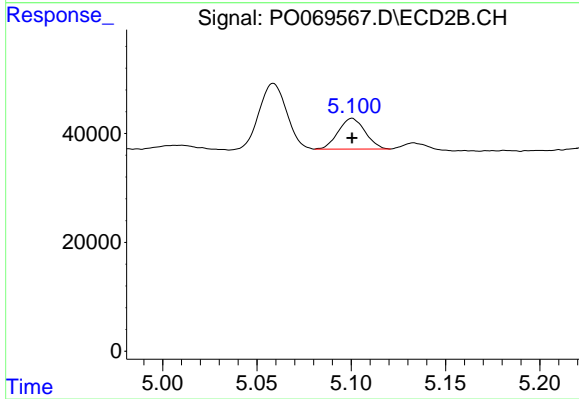
Instrument :
 ECD_O
 ClientSampleId :



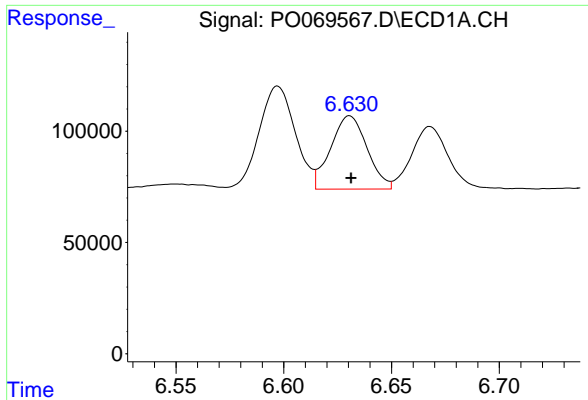
#22 AR-1248-2
 R.T.: 5.059 min
 Delta R.T.: 0.000 min
 Response: 121742
 Conc: 89.43 ng/ml



#23 AR-1248-3
 R.T.: 6.204 min
 Delta R.T.: 0.000 min
 Response: 82010
 Conc: 51.89 ng/ml

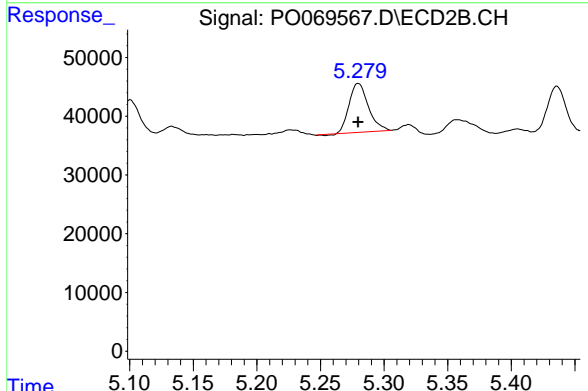


#23 AR-1248-3
 R.T.: 5.101 min
 Delta R.T.: 0.000 min
 Response: 56013
 Conc: 44.35 ng/ml

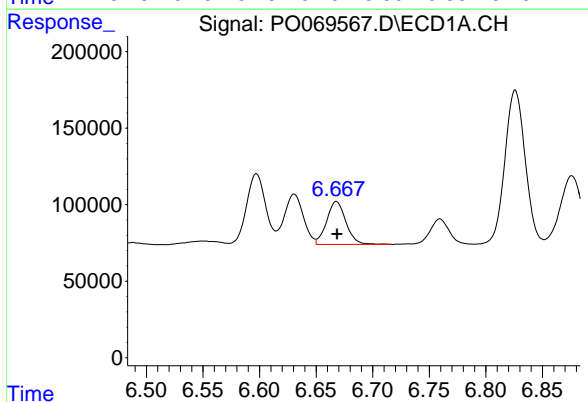


#24 AR-1248-4
 R.T.: 6.631 min
 Delta R.T.: 0.000 min
 Response: 387633
 Conc: 191.04 ng/ml

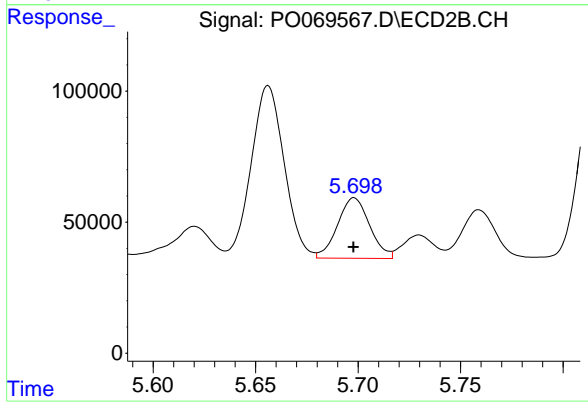
Instrument :
 ECD_O
 ClientSampleId :



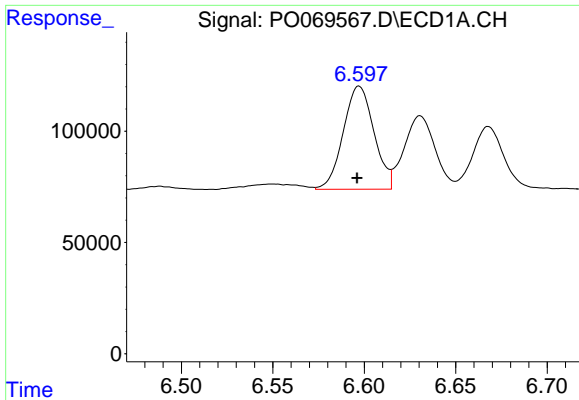
#24 AR-1248-4
 R.T.: 5.280 min
 Delta R.T.: 0.000 min
 Response: 87322
 Conc: 53.76 ng/ml



#25 AR-1248-5
 R.T.: 6.668 min
 Delta R.T.: 0.000 min
 Response: 333187
 Conc: 173.60 ng/ml



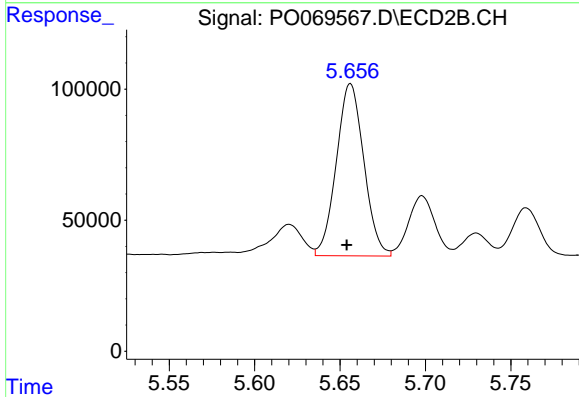
#25 AR-1248-5
 R.T.: 5.698 min
 Delta R.T.: 0.000 min
 Response: 251370
 Conc: 152.33 ng/ml



#26 AR-1254-1

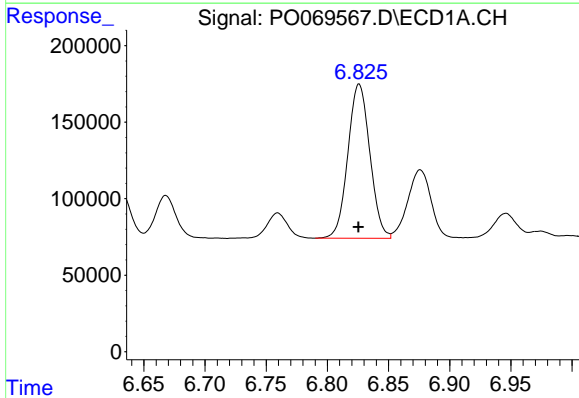
R.T.: 6.597 min
 Delta R.T.: 0.001 min
 Response: 541502
 Conc: 272.03 ng/ml

Instrument :
 ECD_O
 ClientSampleId :



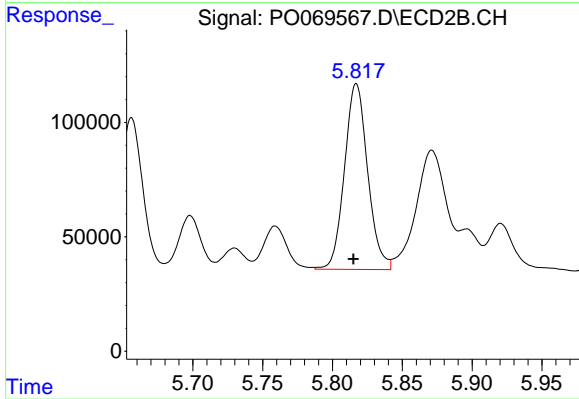
#26 AR-1254-1

R.T.: 5.656 min
 Delta R.T.: 0.002 min
 Response: 736429
 Conc: 282.91 ng/ml



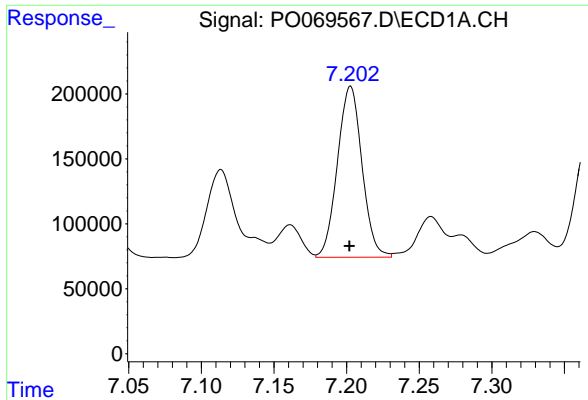
#27 AR-1254-2

R.T.: 6.826 min
 Delta R.T.: 0.000 min
 Response: 1261514
 Conc: 392.97 ng/ml



#27 AR-1254-2

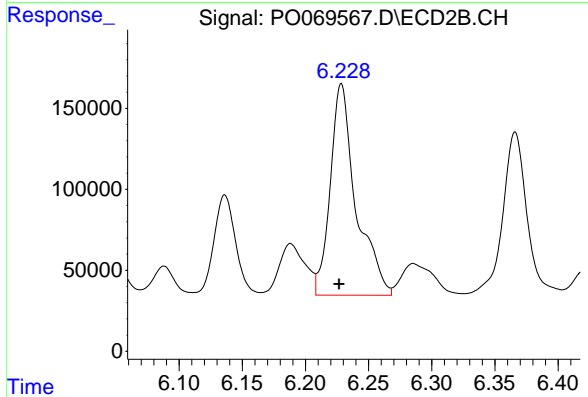
R.T.: 5.817 min
 Delta R.T.: 0.002 min
 Response: 938426
 Conc: 406.50 ng/ml



#28 AR-1254-3

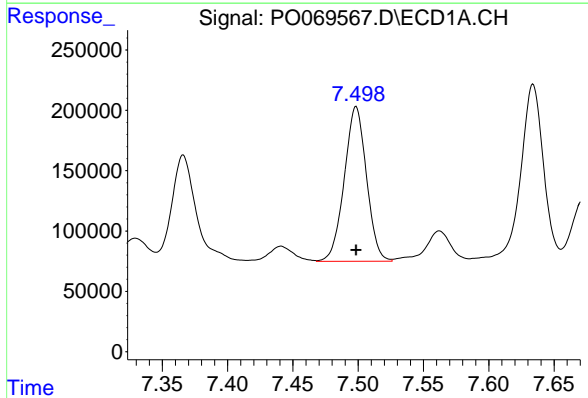
R.T.: 7.203 min
 Delta R.T.: 0.000 min
 Response: 1551421
 Conc: 441.74 ng/ml

Instrument :
 ECD_O
 ClientSampleId :



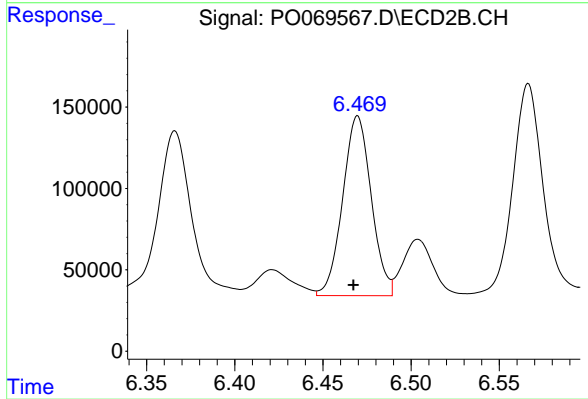
#28 AR-1254-3

R.T.: 6.228 min
 Delta R.T.: 0.002 min
 Response: 1851812
 Conc: 493.09 ng/ml



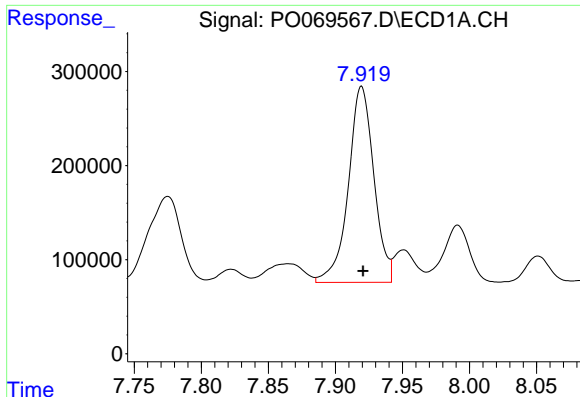
#29 AR-1254-4

R.T.: 7.498 min
 Delta R.T.: 0.000 min
 Response: 1518794
 Conc: 507.47 ng/ml



#29 AR-1254-4

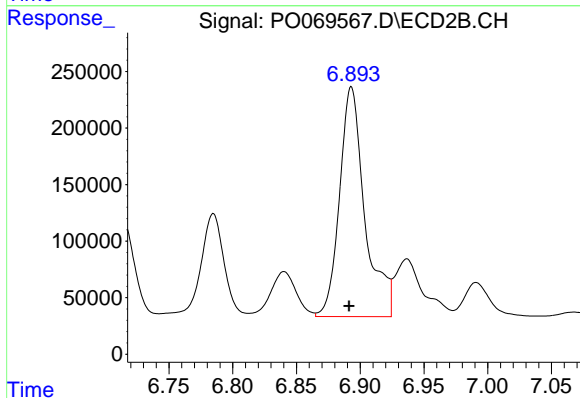
R.T.: 6.470 min
 Delta R.T.: 0.002 min
 Response: 1247737
 Conc: 493.74 ng/ml



#30 AR-1254-5

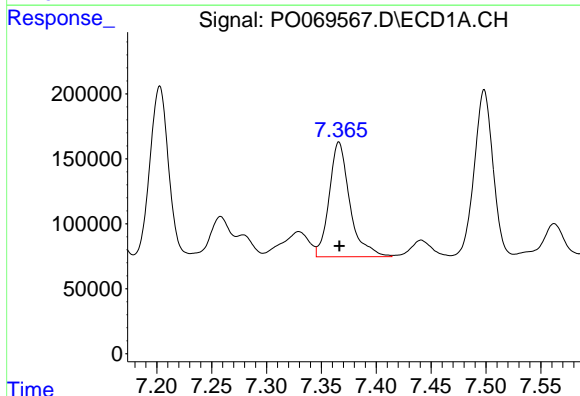
R.T.: 7.919 min
Delta R.T.: -0.001 min
Response: 2754662
Conc: 915.54 ng/ml

Instrument :
ECD_O
ClientSampled :



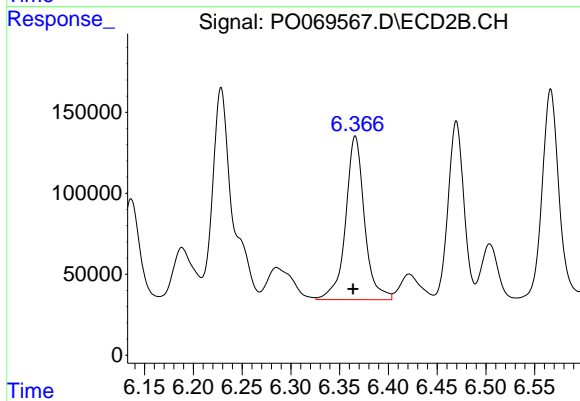
#30 AR-1254-5

R.T.: 6.893 min
Delta R.T.: 0.002 min
Response: 2800609
Conc: 780.34 ng/ml



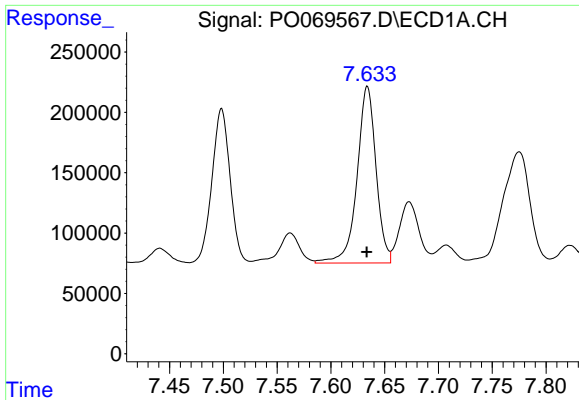
#31 AR-1260-1

R.T.: 7.366 min
Delta R.T.: 0.000 min
Response: 1155747
Conc: 439.55 ng/ml



#31 AR-1260-1

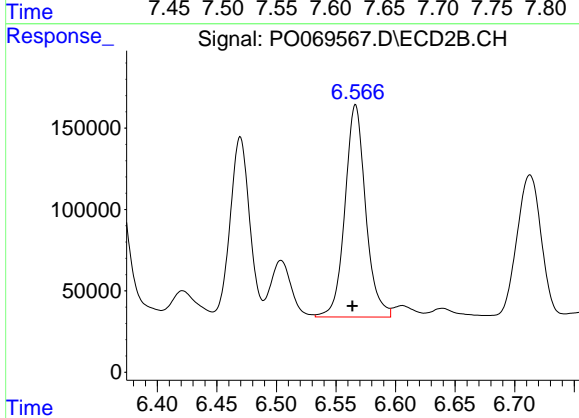
R.T.: 6.366 min
Delta R.T.: 0.002 min
Response: 1360157
Conc: 515.69 ng/ml



#32 AR-1260-2

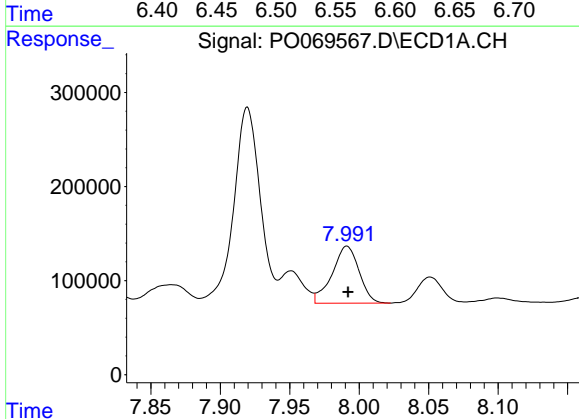
R.T.: 7.634 min
 Delta R.T.: 0.000 min
 Response: 1799556
 Conc: 507.29 ng/ml

Instrument :
 ECD_O
 ClientSampled :



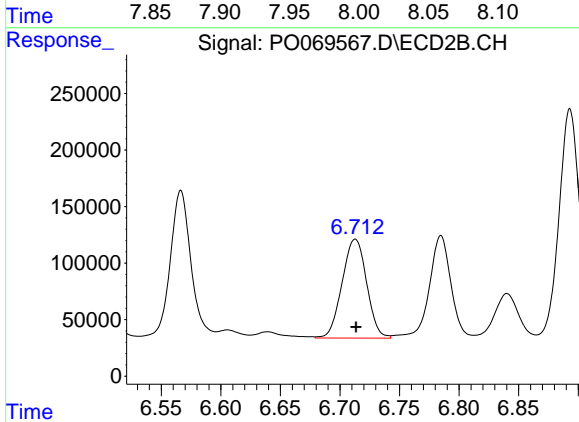
#32 AR-1260-2

R.T.: 6.566 min
 Delta R.T.: 0.002 min
 Response: 1580955
 Conc: 483.01 ng/ml



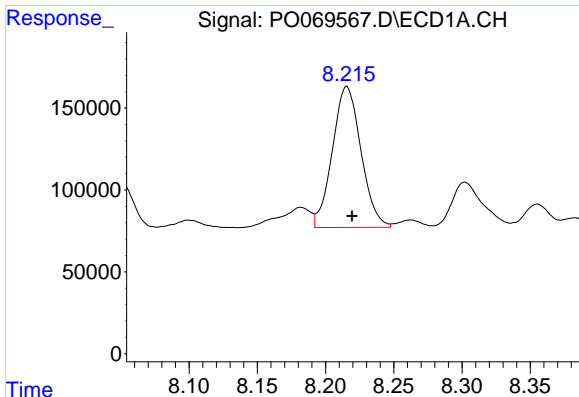
#33 AR-1260-3

R.T.: 7.991 min
 Delta R.T.: 0.000 min
 Response: 818410
 Conc: 283.09 ng/ml



#33 AR-1260-3

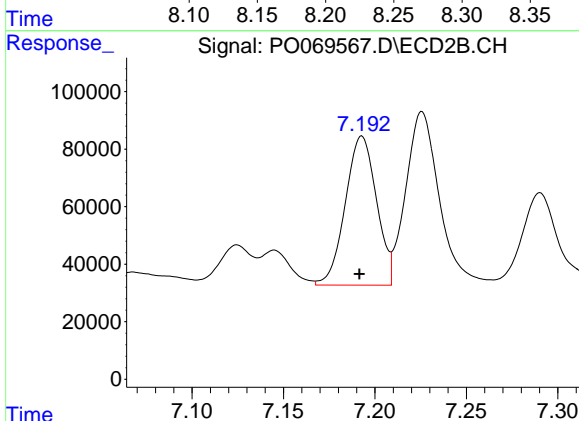
R.T.: 6.713 min
 Delta R.T.: 0.000 min
 Response: 1258051
 Conc: 413.20 ng/ml



#34 AR-1260-4

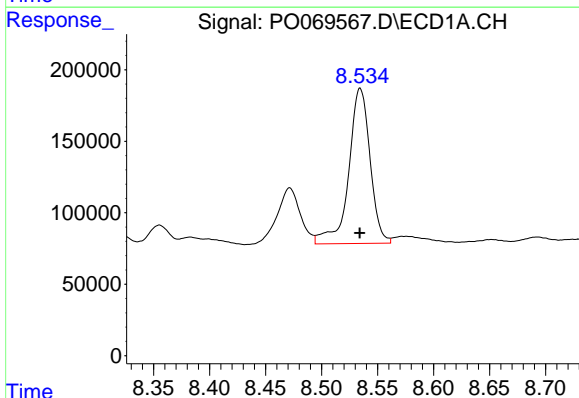
R.T.: 8.216 min
 Delta R.T.: -0.004 min
 Response: 1254877
 Conc: 423.67 ng/ml

Instrument :
 ECD_O
 ClientSampled :



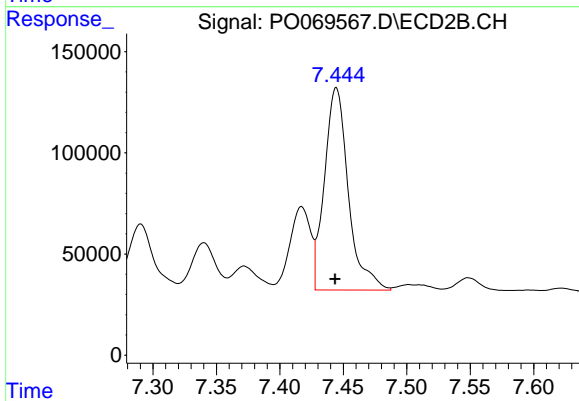
#34 AR-1260-4

R.T.: 7.193 min
 Delta R.T.: 0.001 min
 Response: 614059
 Conc: 226.86 ng/ml



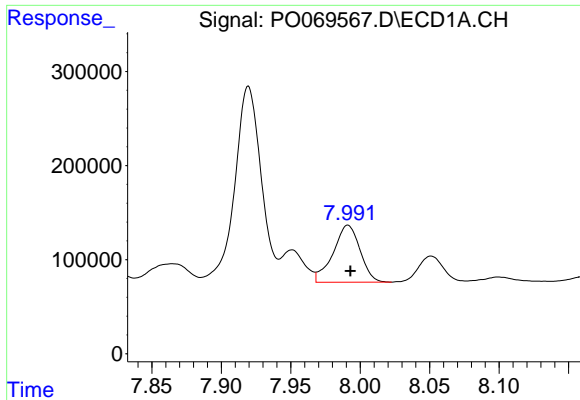
#35 AR-1260-5

R.T.: 8.534 min
 Delta R.T.: 0.000 min
 Response: 1443060
 Conc: 213.27 ng/ml



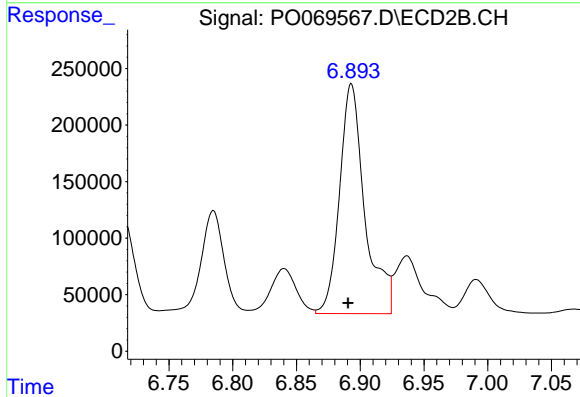
#35 AR-1260-5

R.T.: 7.444 min
 Delta R.T.: 0.001 min
 Response: 1313450
 Conc: 204.95 ng/ml

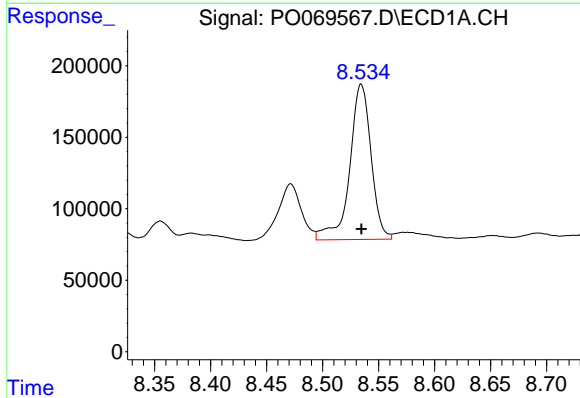


#36 AR-1262-1
 R.T.: 7.991 min
 Delta R.T.: -0.002 min
 Response: 818410
 Conc: 205.66 ng/ml

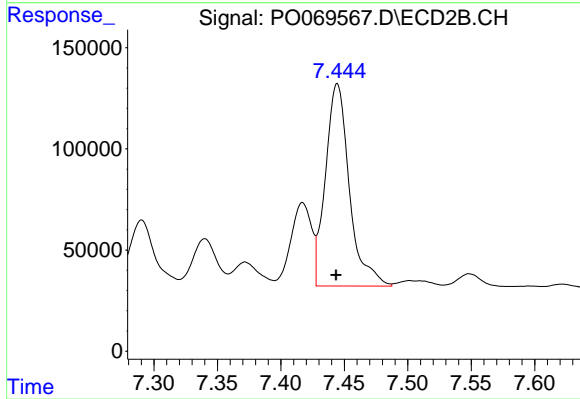
Instrument :
 ECD_O
 ClientSampleId :



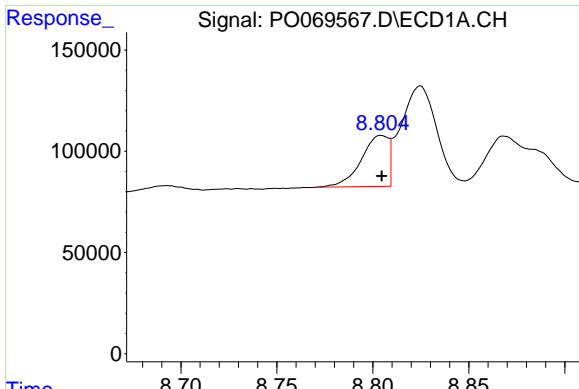
#36 AR-1262-1
 R.T.: 6.893 min
 Delta R.T.: 0.003 min
 Response: 2800609
 Conc: 1450.34 ng/ml



#37 AR-1262-2
 R.T.: 8.534 min
 Delta R.T.: 0.000 min
 Response: 1443060
 Conc: 199.92 ng/ml



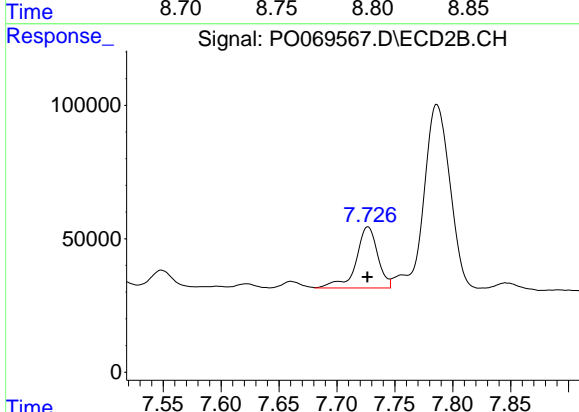
#37 AR-1262-2
 R.T.: 7.444 min
 Delta R.T.: 0.001 min
 Response: 1313450
 Conc: 201.16 ng/ml



#38 AR-1262-3

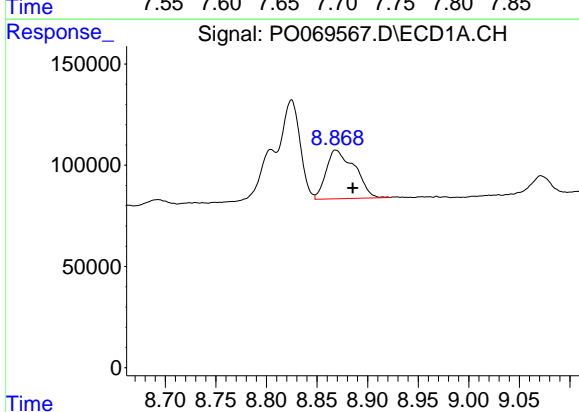
R.T.: 8.804 min
 Delta R.T.: 0.000 min
 Response: 249841
 Conc: 52.18 ng/ml

Instrument :
 ECD_O
 ClientSampled :



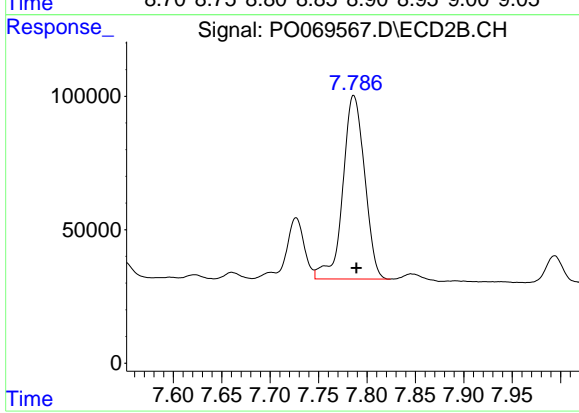
#38 AR-1262-3

R.T.: 7.727 min
 Delta R.T.: 0.000 min
 Response: 299298
 Conc: 111.06 ng/ml



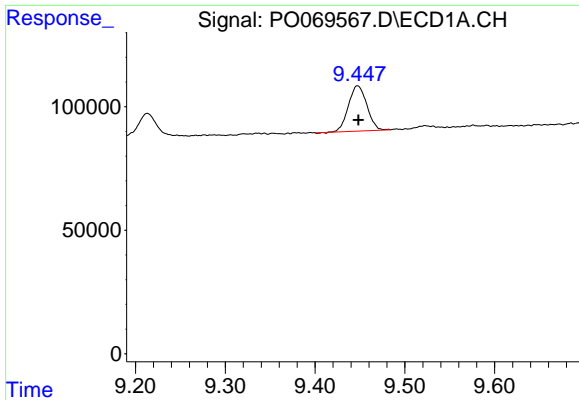
#39 AR-1262-4

R.T.: 8.869 min
 Delta R.T.: -0.017 min
 Response: 473241
 Conc: 244.14 ng/ml



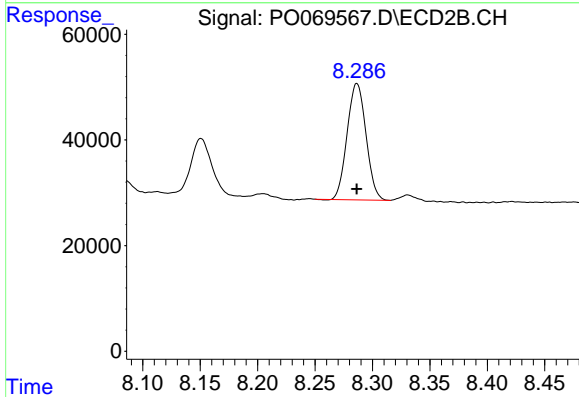
#39 AR-1262-4

R.T.: 7.786 min
 Delta R.T.: -0.003 min
 Response: 1078791
 Conc: 216.66 ng/ml

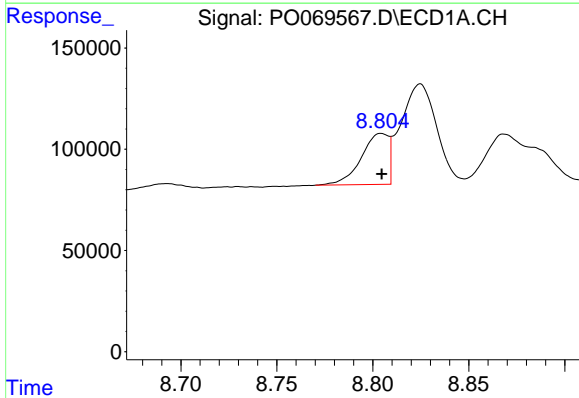


#40 AR-1262-5
 R.T.: 9.447 min
 Delta R.T.: 0.000 min
 Response: 261710
 Conc: 100.34 ng/ml

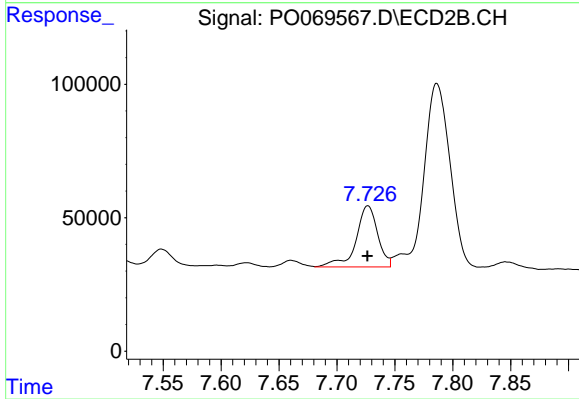
Instrument :
 ECD_O
 ClientSampled :



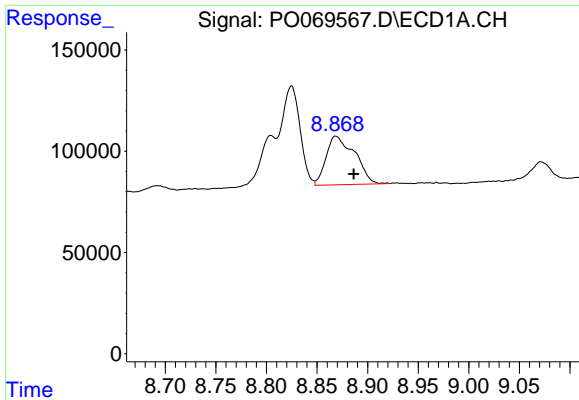
#40 AR-1262-5
 R.T.: 8.287 min
 Delta R.T.: 0.000 min
 Response: 253215
 Conc: 101.90 ng/ml



#41 AR-1268-1
 R.T.: 8.804 min
 Delta R.T.: 0.000 min
 Response: 249841
 Conc: 27.26 ng/ml



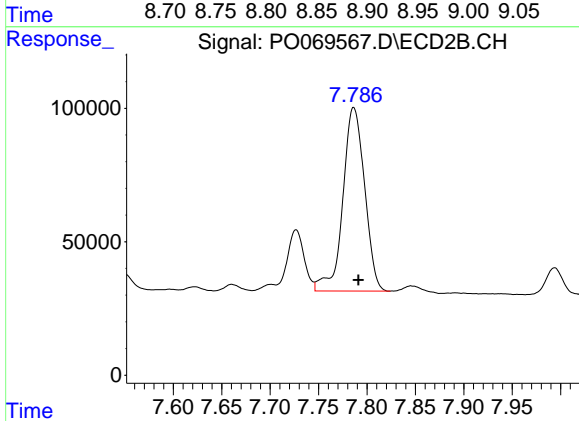
#41 AR-1268-1
 R.T.: 7.727 min
 Delta R.T.: 0.000 min
 Response: 299298
 Conc: 38.23 ng/ml



#42 AR-1268-2

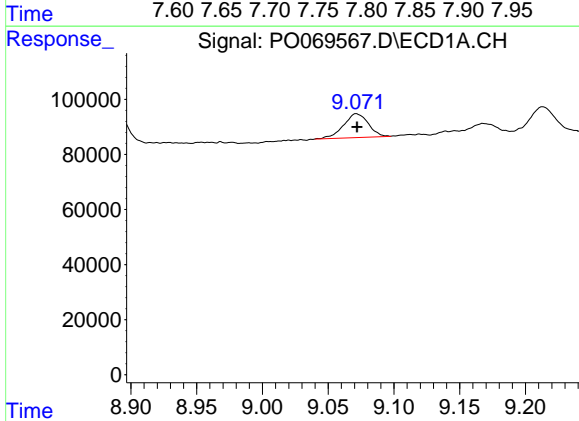
R.T.: 8.869 min
 Delta R.T.: -0.018 min
 Response: 473241
 Conc: 57.10 ng/ml

Instrument :
 ECD_O
 ClientSampled :



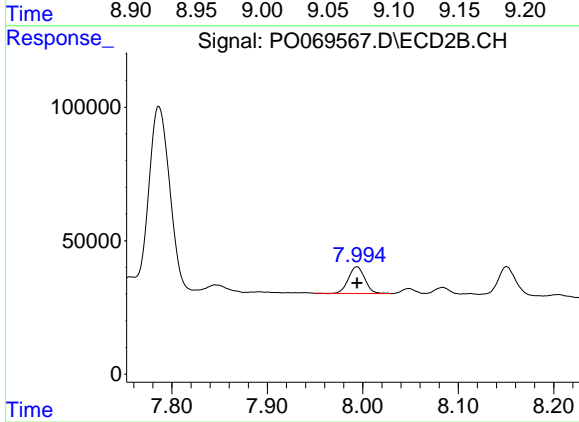
#42 AR-1268-2

R.T.: 7.786 min
 Delta R.T.: -0.005 min
 Response: 1078791
 Conc: 151.03 ng/ml



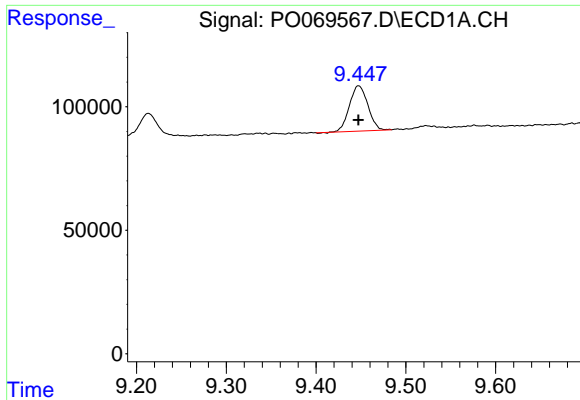
#43 AR-1268-3

R.T.: 9.071 min
 Delta R.T.: 0.000 min
 Response: 113717
 Conc: 16.07 ng/ml



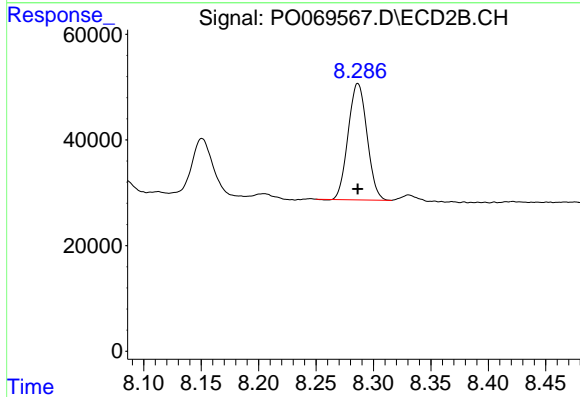
#43 AR-1268-3

R.T.: 7.994 min
 Delta R.T.: 0.000 min
 Response: 119231
 Conc: 19.97 ng/ml

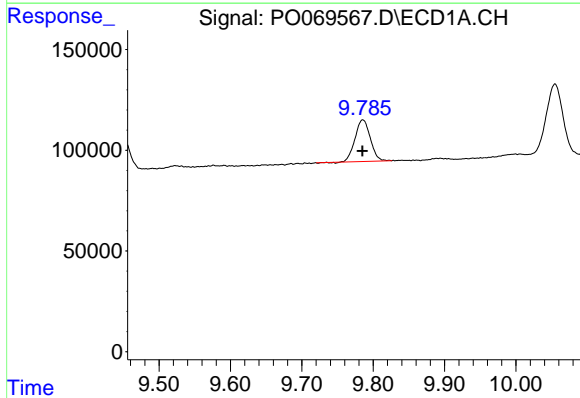


#44 AR-1268-4
 R.T.: 9.447 min
 Delta R.T.: 0.000 min
 Response: 261710
 Conc: 86.35 ng/ml

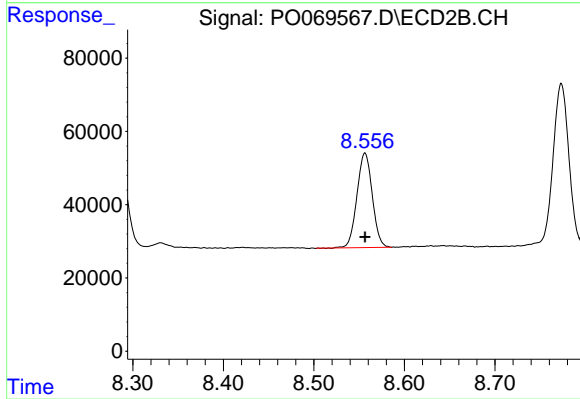
Instrument :
 ECD_O
 ClientSampled :



#44 AR-1268-4
 R.T.: 8.287 min
 Delta R.T.: 0.000 min
 Response: 253215
 Conc: 87.56 ng/ml



#45 AR-1268-5
 R.T.: 9.786 min
 Delta R.T.: 0.000 min
 Response: 307241
 Conc: 13.83 ng/ml



#45 AR-1268-5
 R.T.: 8.556 min
 Delta R.T.: 0.000 min
 Response: 304033
 Conc: 15.77 ng/ml