

Data Path : Z:\pestpcbsrv\HPCHEM1\ECD_0\Data\P0071320\
 Data File : P0069574.D
 Signal(s) : Signal #1: ECD1A.CH Signal #2: ECD2B.CH
 Acq On : 13 Jul 2020 16:51
 Operator : DD\AJ
 Sample : L3274-07MSD
 Misc :
 ALS Vial : 20 Sample Multiplier: 1

Instrument :
 ECD_O
 ClientSampled :

Integration File signal 1: autoint1.e
 Integration File signal 2: autoint2.e
 Quant Time: Jul 13 18:41:02 2020
 Quant Method : Z:\pestpcbsrv\HPCHEM1\ECD_0\methods\P0070820.M
 Quant Title : GC EXTRACTABLES
 QLast Update : Wed Jul 08 16:12:41 2020
 Response via : Initial Calibration
 Integrator: ChemStation 6890 Scale Mode: Small noise peaks clipped

Volume Inj. : 2 µl
 Signal #1 Phase : ZB-MR1 Signal #2 Phase: ZB-MR2
 Signal #1 Info : 30Mx0.32mmx 0.50µ Signal #2 Info : 30M x 0.32mm x 0.25µm

Compound	RT#1	RT#2	Resp#1	Resp#2	ng/ml	ng/ml
System Monitoring Compounds						
1) SA Tetrachlo...	4.393	3.565	932982	966029	24.989	24.274
2) SA Decachlor...	10.054	8.773	3477553	2990416	57.799	52.691
Target Compounds						
3) L1 AR-1016-1	5.702	4.798	539290	491373	301.037	292.202
4) L1 AR-1016-2	5.724	4.816	678025	593459	267.452	255.215
5) L1 AR-1016-3	5.788	5.002	383194	378040	249.848	296.766
6) L1 AR-1016-4	5.893	5.058	349099	622660	269.379	570.185 #
7) L1 AR-1016-5	6.204	5.280	756446	645531	574.109	469.289
8) L2 AR-1221-1	0.000	3.815	0	50215	N.D.	105.053 #
9) L2 AR-1221-2	4.744	3.914	48961	54229	159.702	151.550
10) L2 AR-1221-3	4.830	4.000	186310	212844	183.350	194.620
11) L3 AR-1232-1	4.830	4.000	186310	212844	229.048	238.058
12) L3 AR-1232-2	5.407	4.816	442895	593459	1033.365	613.891 #
13) L3 AR-1232-3	5.724	5.002	678025	378040	678.275	723.557
14) L3 AR-1232-4	5.893	5.101	349099	469834	713.488	1071.618 #
15) L3 AR-1232-5	5.992	5.280	660821	645531	2082.290	1233.958 #
16) L4 AR-1242-1	5.702	4.798	539290	491373	413.762	391.884
17) L4 AR-1242-2	5.724	4.816	678025	593459	360.060	339.675
18) L4 AR-1242-3	5.788	5.002	383194	378040	337.433	392.699
19) L4 AR-1242-4	5.893	5.101	349099	469834	363.798	519.340 #
20) L4 AR-1242-5	6.669	5.656	973882	2124663	820.366	1676.325 #
21) L5 AR-1248-1	5.702	4.798	539290	491373	552.233	502.093
22) L5 AR-1248-2	5.992	5.058	660821	622660	519.011	457.375
23) L5 AR-1248-3	6.204	5.101	756446	469834	478.620	372.018
24) L5 AR-1248-4	6.631	5.280	1116746	645531	550.372	397.409 #
25) L5 AR-1248-5	6.669	5.698	973882	617644	507.428	374.287 #
26) L6 AR-1254-1	6.597	5.656	1779751	2124663	894.086	816.208
27) L6 AR-1254-2	6.826	5.817	3662437	2564660	1140.861	1110.928
28) L6 AR-1254-3	7.203	6.229	4526820	4952311	1288.925	1318.679
29) L6 AR-1254-4	7.498	6.469	4741615	3378679	1584.302	1336.962
30) L6 AR-1254-5	7.921	6.893	8562293	8101549	2845.756	2257.358
31) L7 AR-1260-1	7.367	6.366	3753481	3993524	1427.499	1514.091
32) L7 AR-1260-2	7.633	6.566	5340565	4908238	1505.485	1499.543
33) L7 AR-1260-3	7.992	6.712	2815242	3535243	973.800	1161.137
34) L7 AR-1260-4	8.217	7.192	4144032	1851907	1399.095	684.171 #
35) L7 AR-1260-5	8.535	7.444	5002414	4147131	739.303	647.118
36) L8 AR-1262-1	7.992	6.893	2815242	8101549	707.443	4195.523 #
37) L8 AR-1262-2	8.535	7.444	5002414	4147131	693.036	635.162
38) L8 AR-1262-3	8.806	7.726	1008203	1105293	210.558	410.121 #
39) L8 AR-1262-4	8.869f	7.786	1725260	3452980	890.038	693.486
40) L8 AR-1262-5	9.449	8.287	990023	945755	379.593	380.602
41) L9 AR-1268-1	8.806	7.726	1008203	1105293	109.990	141.196 #

Data Path : Z:\pestpcbsrv\HPCHEM1\ECD_0\Data\P0071320\
 Data File : P0069574.D
 Signal(s) : Signal #1: ECD1A.CH Signal #2: ECD2B.CH
 Acq On : 13 Jul 2020 16:51
 Operator : DD\AJ
 Sample : L3274-07MSD
 Misc :
 ALS Vial : 20 Sample Multiplier: 1

Instrument :
 ECD_0
 ClientSampleId :

Integration File signal 1: autoint1.e
 Integration File signal 2: autoint2.e
 Quant Time: Jul 13 18:41:02 2020
 Quant Method : Z:\pestpcbsrv\HPCHEM1\ECD_0\methods\P0070820.M
 Quant Title : GC EXTRACTABLES
 QLast Update : Wed Jul 08 16:12:41 2020
 Response via : Initial Calibration
 Integrator: ChemStation 6890 Scale Mode: Small noise peaks clipped

Volume Inj. : 2 µl
 Signal #1 Phase : ZB-MR1 Signal #2 Phase: ZB-MR2
 Signal #1 Info : 30Mx0.32mmx 0.50µ Signal #2 Info : 30M x 0.32mm x 0.25µm

	Compound	RT#1	RT#2	Resp#1	Resp#2	ng/ml	ng/ml
42)	L9 AR-1268-2	8.869f	7.786	1725260	3452980	208.148	483.408 #
43)	L9 AR-1268-3	9.072	7.992	843734	868057	119.236	145.372
44)	L9 AR-1268-4	9.449	8.287	990023	945755	326.641	327.020
45)	L9 AR-1268-5	9.785	8.557	1994945	1703405	89.803	88.340

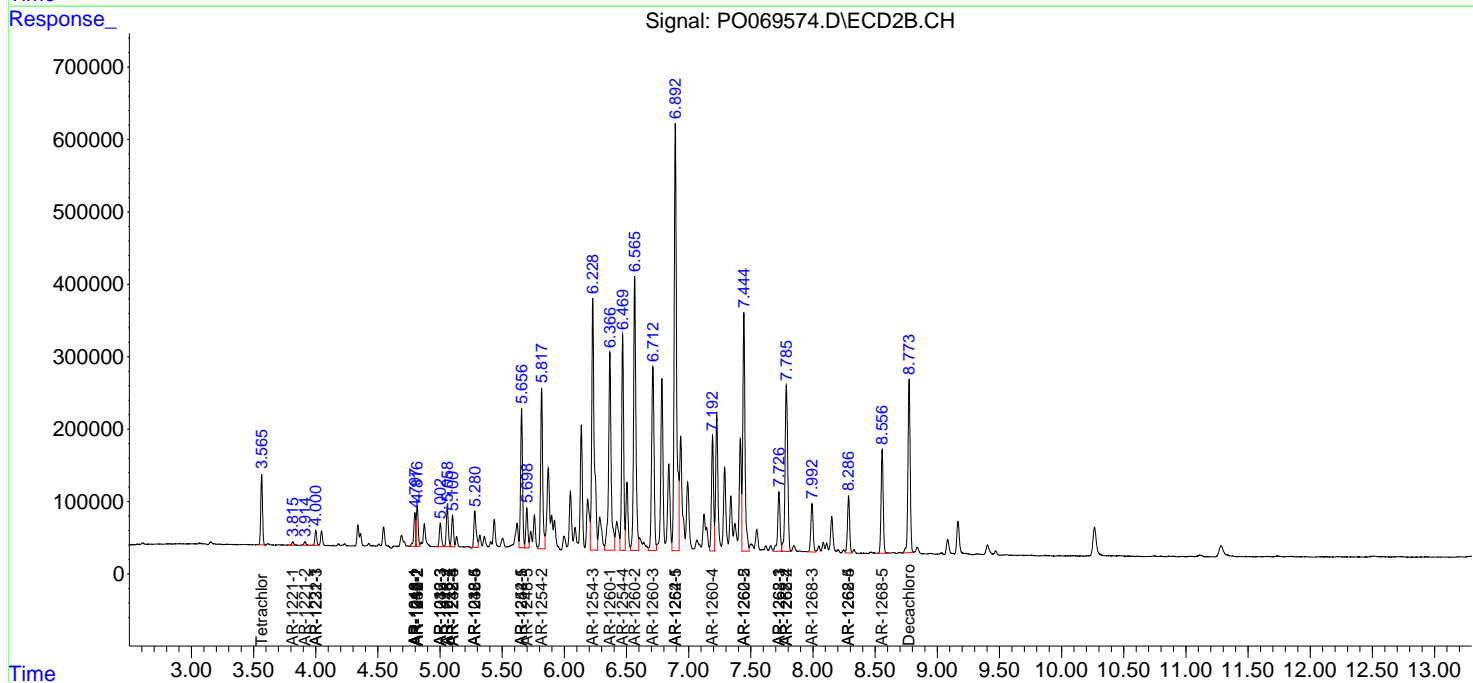
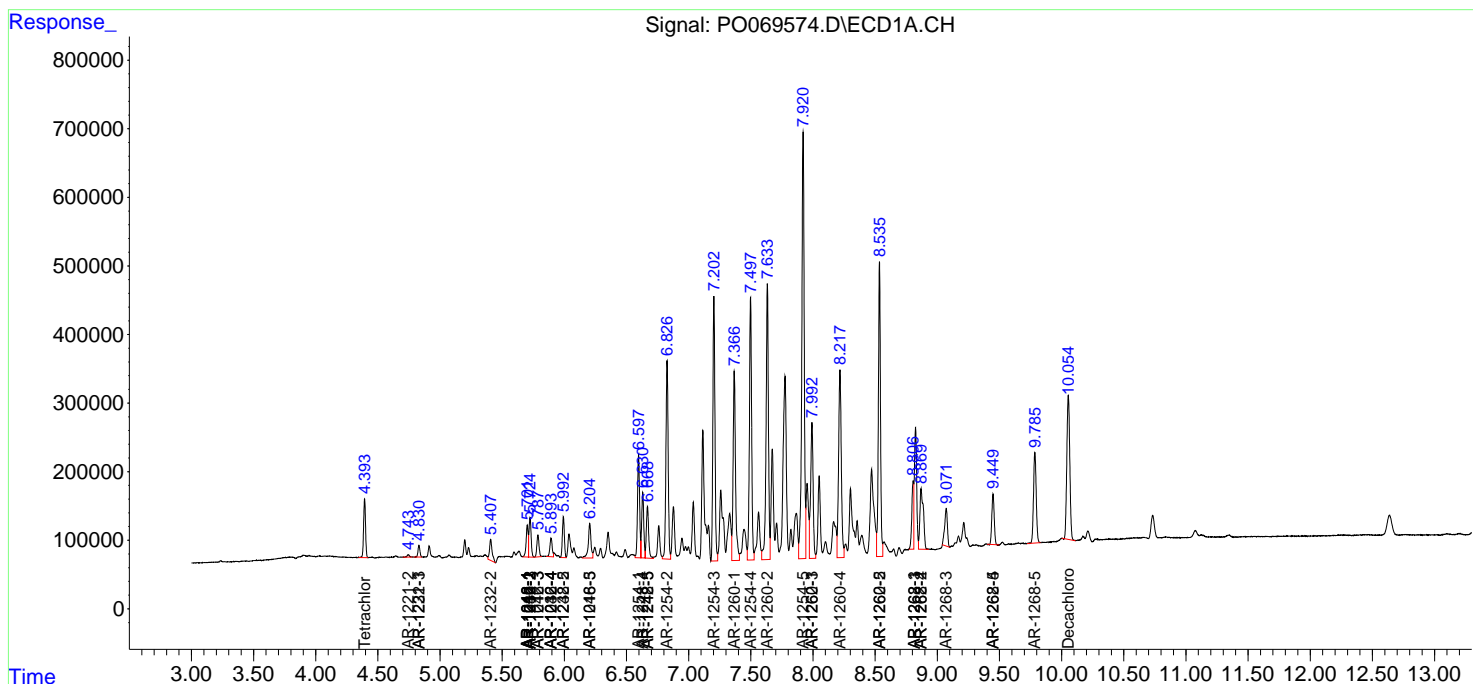
(f)=RT Delta > 1/2 Window (#)=Amounts differ by > 25% (m)=manual int.

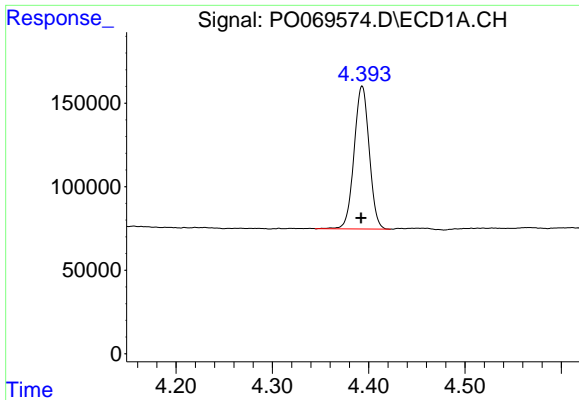
Data Path : Z:\pestpcbsrv\HPCHEM1\ECD_O\Data\P0071320\
 Data File : P0069574.D
 Signal(s) : Signal #1: ECD1A.CH Signal #2: ECD2B.CH
 Acq On : 13 Jul 2020 16:51
 Operator : DD\AJ
 Sample : L3274-07MSD
 Misc :
 ALS Vial : 20 Sample Multiplier: 1

Instrument :
 ECD_O
 ClientSampled :

Integration File signal 1: autoint1.e
 Integration File signal 2: autoint2.e
 Quant Time: Jul 13 18:41:02 2020
 Quant Method : Z:\pestpcbsrv\HPCHEM1\ECD_O\methods\P0070820.M
 Quant Title : GC EXTRACTABLES
 QLast Update : Wed Jul 08 16:12:41 2020
 Response via : Initial Calibration
 Integrator: ChemStation 6890 Scale Mode: Small noise peaks clipped

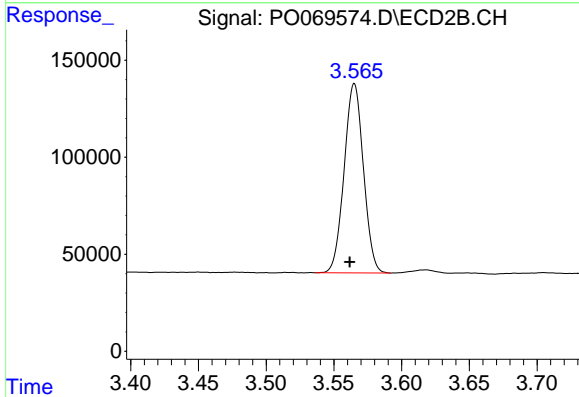
Volume Inj. : 2 µl
 Signal #1 Phase : ZB-MR1 Signal #2 Phase: ZB-MR2
 Signal #1 Info : 30Mx0.32mmx 0.50µ Signal #2 Info : 30M x 0.32mm x 0.25µm



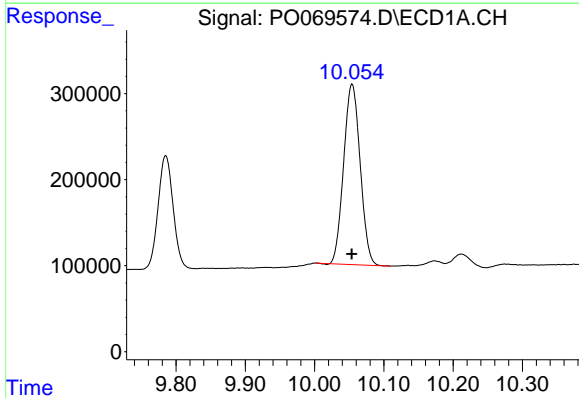


#1 Tetrachloro-m-xylene
 R.T.: 4.393 min
 Delta R.T.: 0.001 min
 Response: 932982
 Conc: 24.99 ng/ml

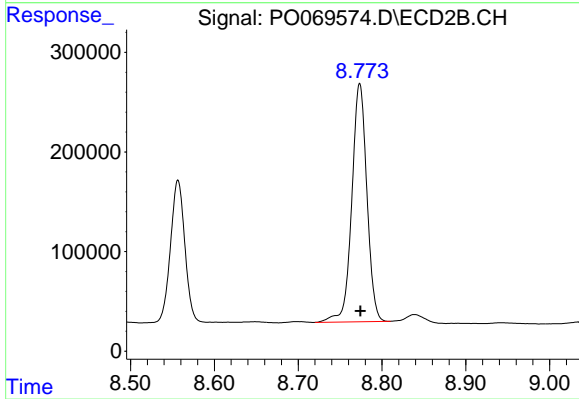
Instrument :
 ECD_O
 ClientSampleId :



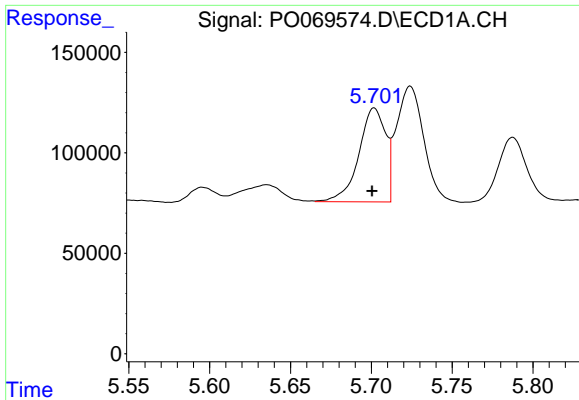
#1 Tetrachloro-m-xylene
 R.T.: 3.565 min
 Delta R.T.: 0.004 min
 Response: 966029
 Conc: 24.27 ng/ml



#2 Decachlorobiphenyl
 R.T.: 10.054 min
 Delta R.T.: 0.000 min
 Response: 3477553
 Conc: 57.80 ng/ml

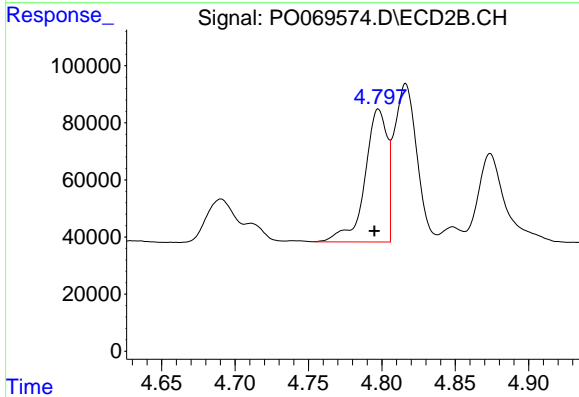


#2 Decachlorobiphenyl
 R.T.: 8.773 min
 Delta R.T.: 0.000 min
 Response: 2990416
 Conc: 52.69 ng/ml

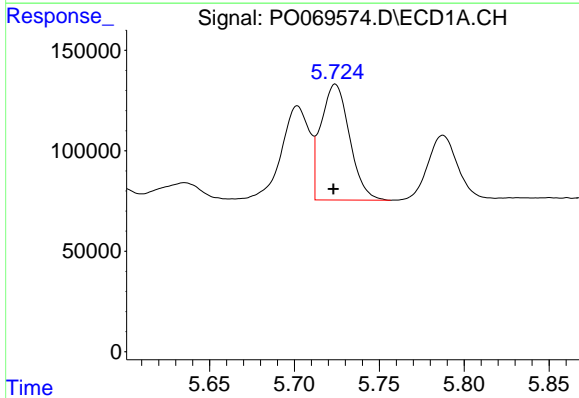


#3 AR-1016-1
 R.T.: 5.702 min
 Delta R.T.: 0.001 min
 Response: 539290
 Conc: 301.04 ng/ml

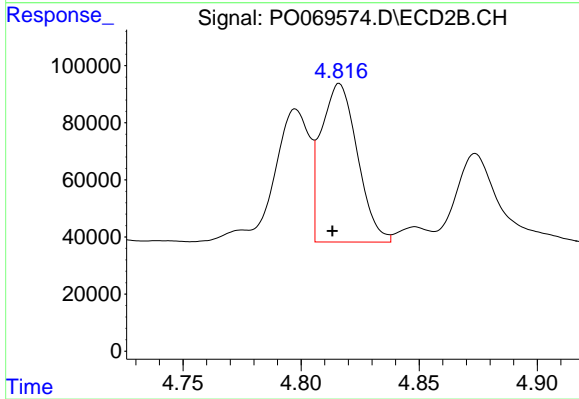
Instrument :
 ECD_O
 ClientSampleId :



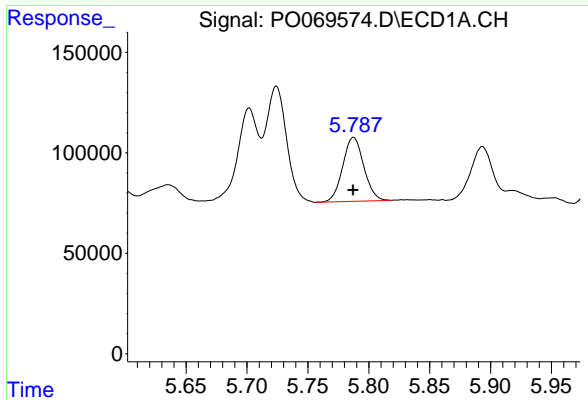
#3 AR-1016-1
 R.T.: 4.798 min
 Delta R.T.: 0.003 min
 Response: 491373
 Conc: 292.20 ng/ml



#4 AR-1016-2
 R.T.: 5.724 min
 Delta R.T.: 0.001 min
 Response: 678025
 Conc: 267.45 ng/ml

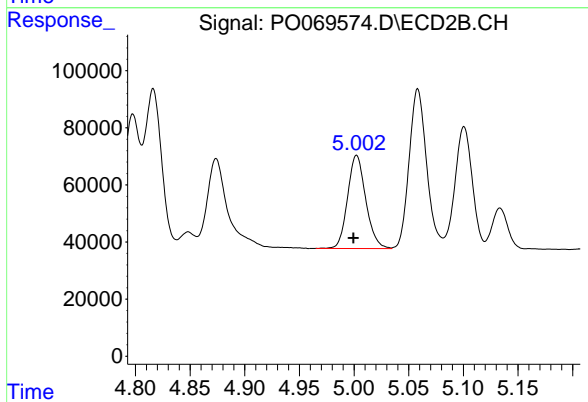


#4 AR-1016-2
 R.T.: 4.816 min
 Delta R.T.: 0.003 min
 Response: 593459
 Conc: 255.22 ng/ml

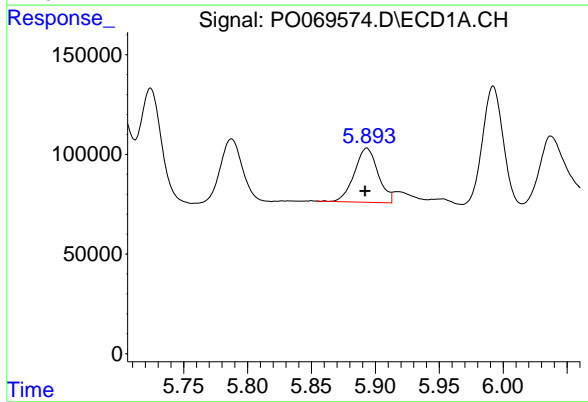


#5 AR-1016-3
R.T.: 5.788 min
Delta R.T.: 0.000 min
Response: 383194
Conc: 249.85 ng/ml

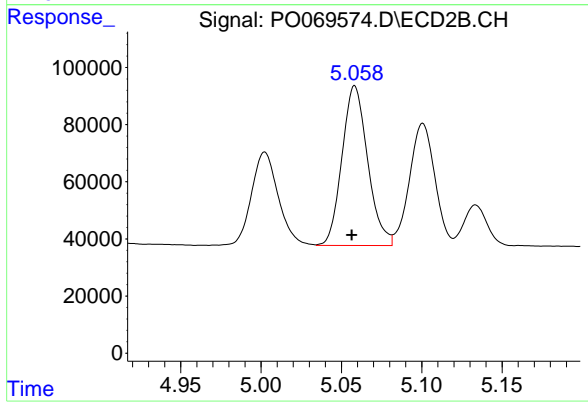
Instrument :
ECD_O
ClientSampleId :



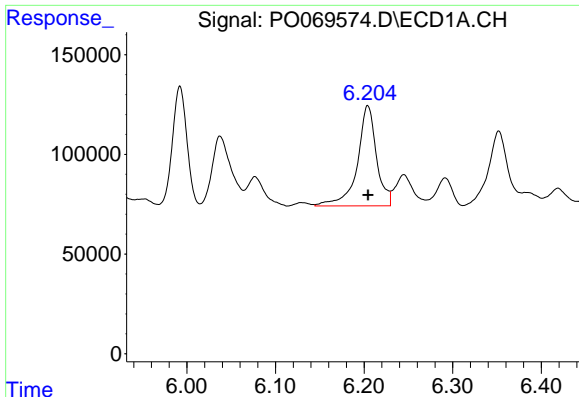
#5 AR-1016-3
R.T.: 5.002 min
Delta R.T.: 0.003 min
Response: 378040
Conc: 296.77 ng/ml



#6 AR-1016-4
R.T.: 5.893 min
Delta R.T.: 0.001 min
Response: 349099
Conc: 269.38 ng/ml



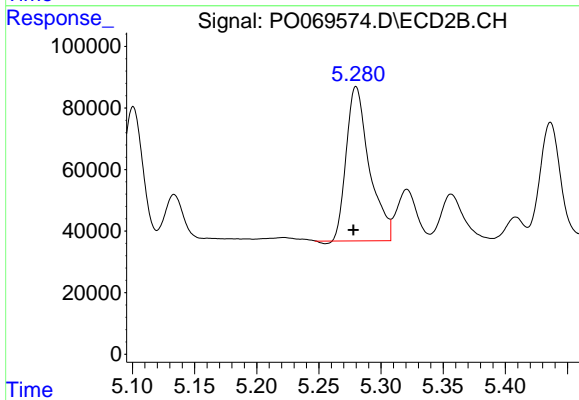
#6 AR-1016-4
R.T.: 5.058 min
Delta R.T.: 0.002 min
Response: 622660
Conc: 570.19 ng/ml



#7 AR-1016-5

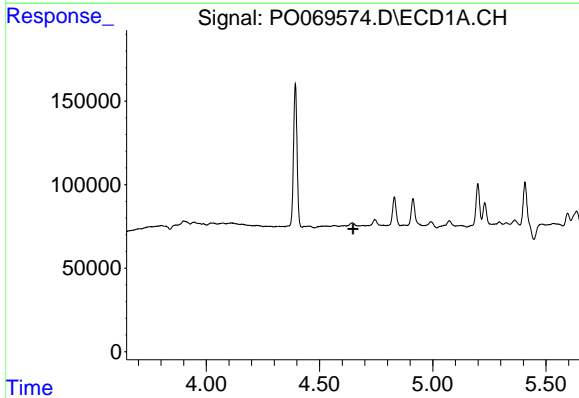
R.T.: 6.204 min
 Delta R.T.: 0.000 min
 Response: 756446
 Conc: 574.11 ng/ml

Instrument :
 ECD_O
 ClientSampled :



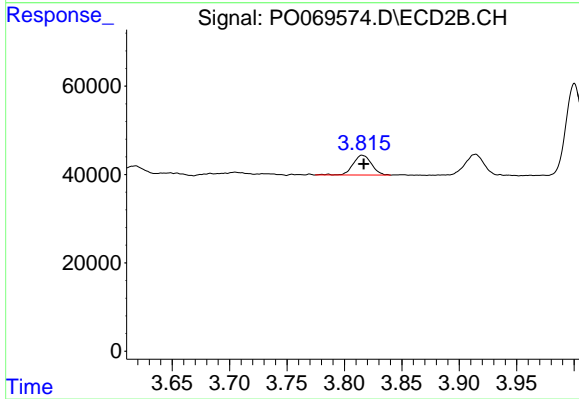
#7 AR-1016-5

R.T.: 5.280 min
 Delta R.T.: 0.002 min
 Response: 645531
 Conc: 469.29 ng/ml



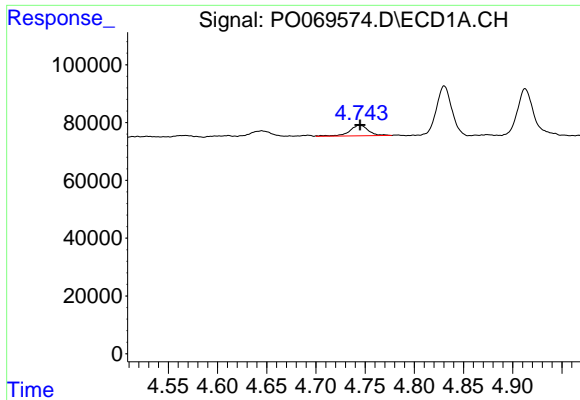
#8 AR-1221-1

R.T.: 0.000 min
 Exp R.T. : 4.648 min
 Response: 0
 Conc: N.D.



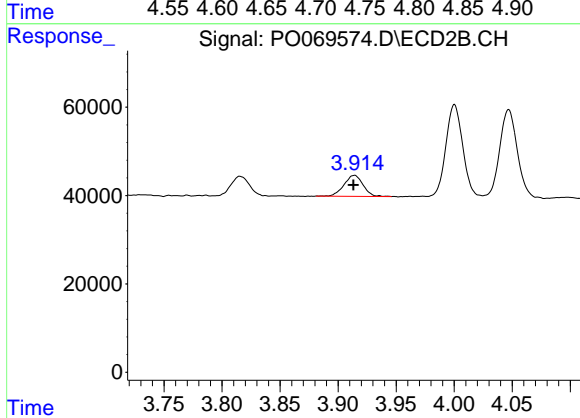
#8 AR-1221-1

R.T.: 3.815 min
 Delta R.T.: -0.001 min
 Response: 50215
 Conc: 105.05 ng/ml

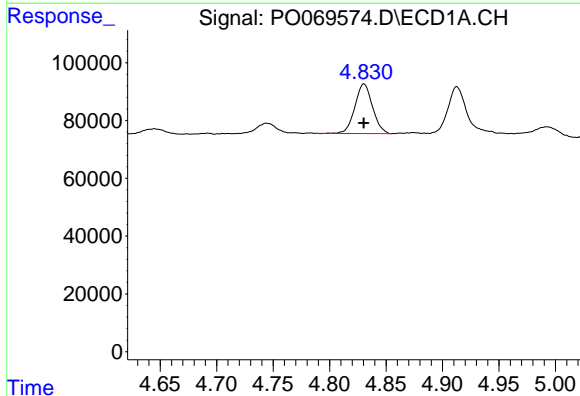


#9 AR-1221-2
 R.T.: 4.744 min
 Delta R.T.: 0.000 min
 Response: 48961
 Conc: 159.70 ng/ml

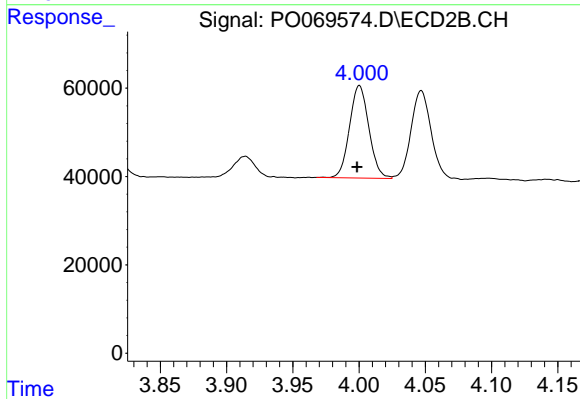
Instrument :
 ECD_O
 ClientSampled :



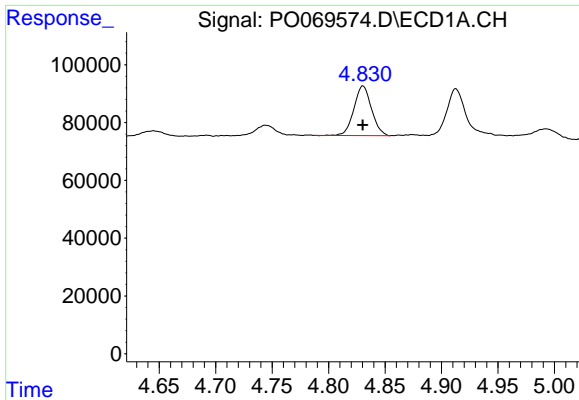
#9 AR-1221-2
 R.T.: 3.914 min
 Delta R.T.: 0.001 min
 Response: 54229
 Conc: 151.55 ng/ml



#10 AR-1221-3
 R.T.: 4.830 min
 Delta R.T.: 0.000 min
 Response: 186310
 Conc: 183.35 ng/ml



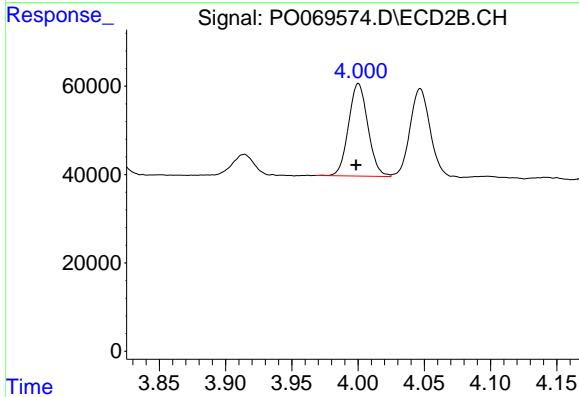
#10 AR-1221-3
 R.T.: 4.000 min
 Delta R.T.: 0.002 min
 Response: 212844
 Conc: 194.62 ng/ml



#11 AR-1232-1

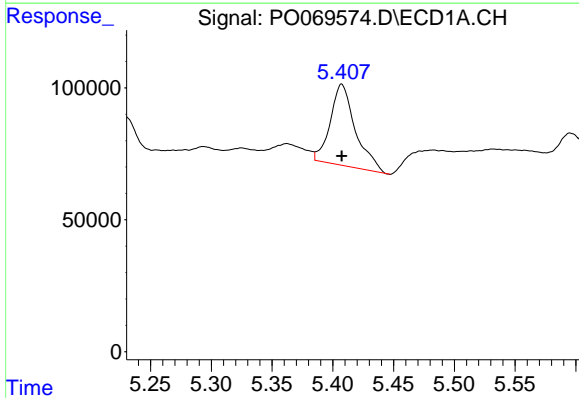
R.T.: 4.830 min
 Delta R.T.: 0.000 min
 Response: 186310
 Conc: 229.05 ng/ml

Instrument :
 ECD_O
 ClientSampleId :



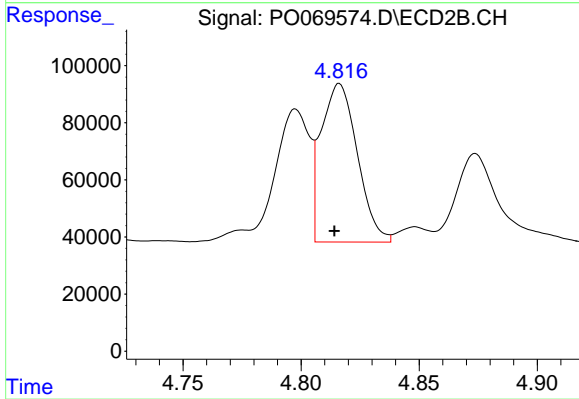
#11 AR-1232-1

R.T.: 4.000 min
 Delta R.T.: 0.002 min
 Response: 212844
 Conc: 238.06 ng/ml



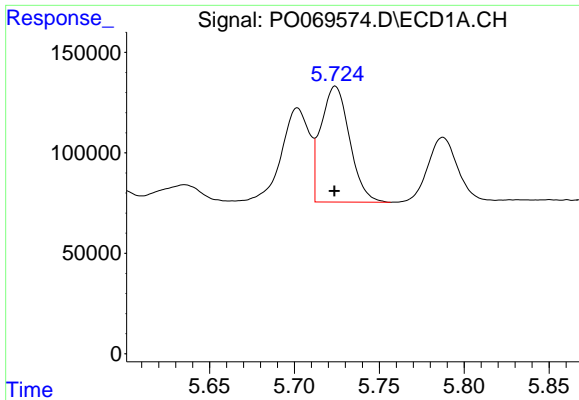
#12 AR-1232-2

R.T.: 5.407 min
 Delta R.T.: 0.000 min
 Response: 442895
 Conc: 1033.36 ng/ml



#12 AR-1232-2

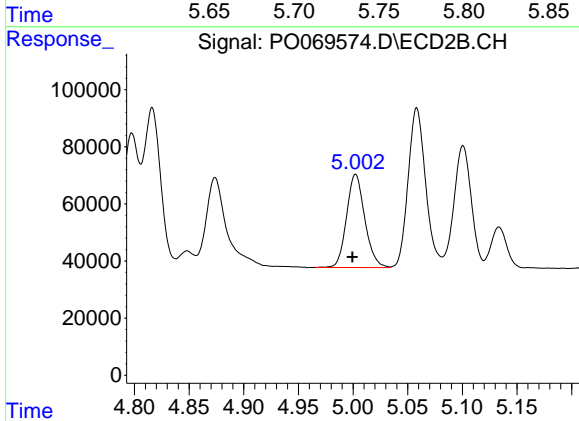
R.T.: 4.816 min
 Delta R.T.: 0.002 min
 Response: 593459
 Conc: 613.89 ng/ml



#13 AR-1232-3

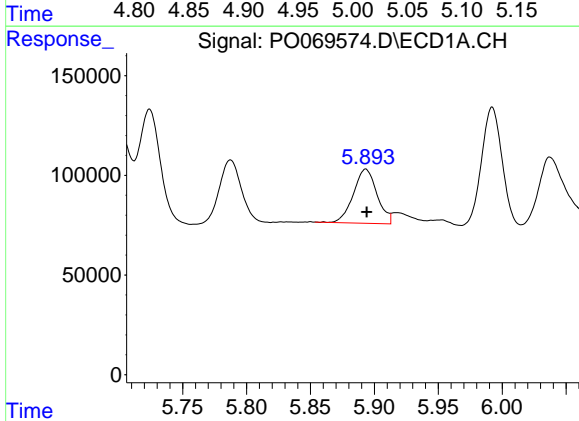
R.T.: 5.724 min
 Delta R.T.: 0.000 min
 Response: 678025
 Conc: 678.27 ng/ml

Instrument :
 ECD_O
 ClientSampleId :



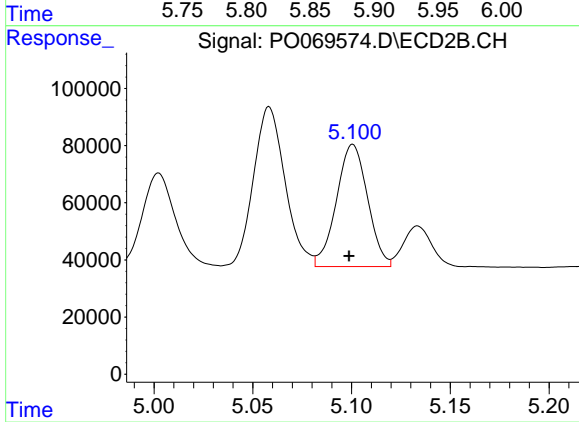
#13 AR-1232-3

R.T.: 5.002 min
 Delta R.T.: 0.003 min
 Response: 378040
 Conc: 723.56 ng/ml



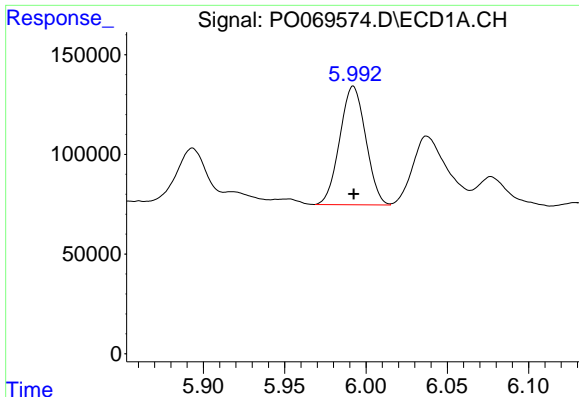
#14 AR-1232-4

R.T.: 5.893 min
 Delta R.T.: 0.000 min
 Response: 349099
 Conc: 713.49 ng/ml



#14 AR-1232-4

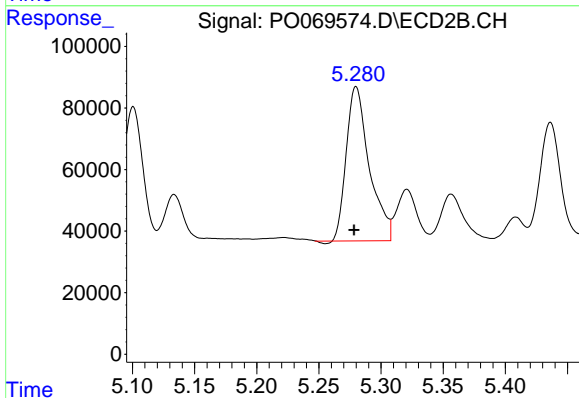
R.T.: 5.101 min
 Delta R.T.: 0.002 min
 Response: 469834
 Conc: 1071.62 ng/ml



#15 AR-1232-5

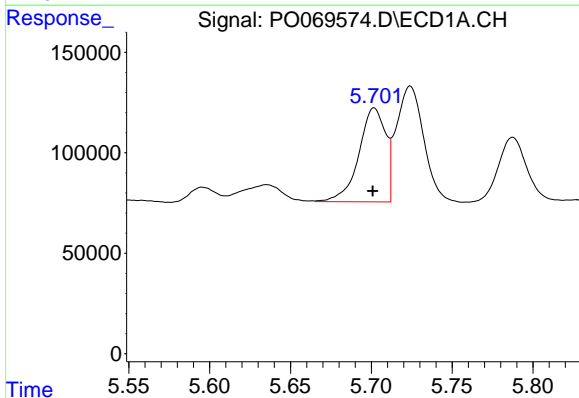
R.T.: 5.992 min
 Delta R.T.: 0.000 min
 Response: 660821
 Conc: 2082.29 ng/ml

Instrument :
 ECD_O
 ClientSampleId :



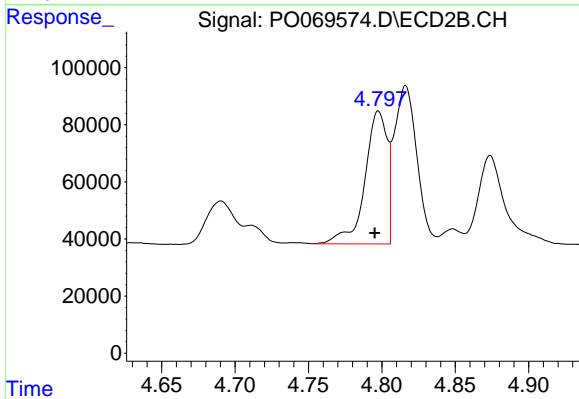
#15 AR-1232-5

R.T.: 5.280 min
 Delta R.T.: 0.002 min
 Response: 645531
 Conc: 1233.96 ng/ml



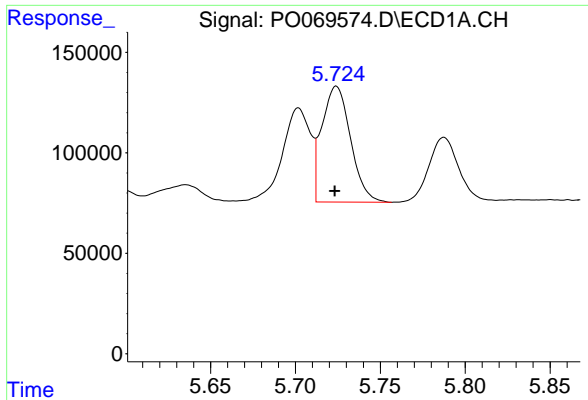
#16 AR-1242-1

R.T.: 5.702 min
 Delta R.T.: 0.000 min
 Response: 539290
 Conc: 413.76 ng/ml



#16 AR-1242-1

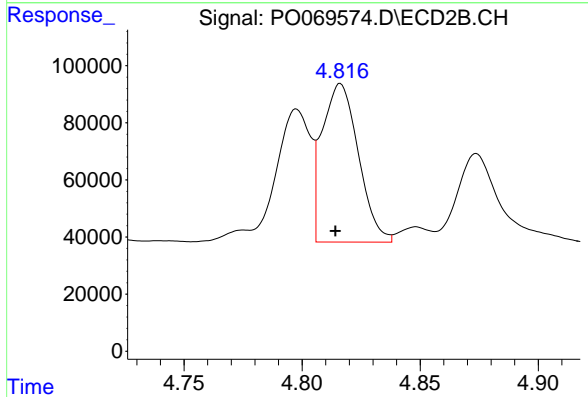
R.T.: 4.798 min
 Delta R.T.: 0.003 min
 Response: 491373
 Conc: 391.88 ng/ml



#17 AR-1242-2

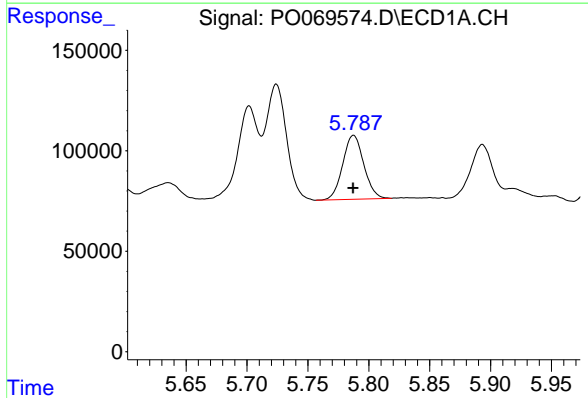
R.T.: 5.724 min
 Delta R.T.: 0.000 min
 Response: 678025
 Conc: 360.06 ng/ml

Instrument :
 ECD_O
 ClientSampleId :



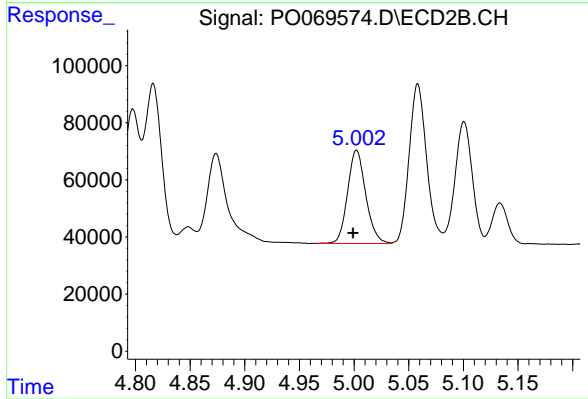
#17 AR-1242-2

R.T.: 4.816 min
 Delta R.T.: 0.002 min
 Response: 593459
 Conc: 339.67 ng/ml



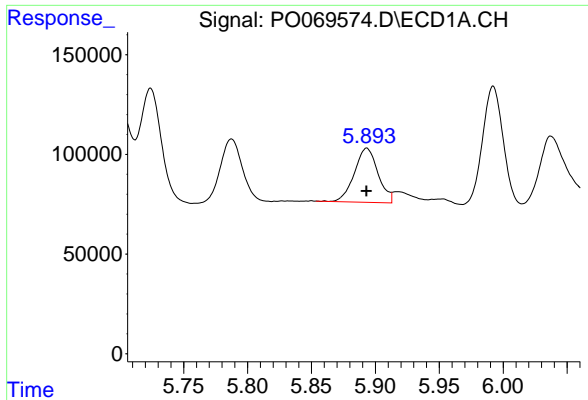
#18 AR-1242-3

R.T.: 5.788 min
 Delta R.T.: 0.000 min
 Response: 383194
 Conc: 337.43 ng/ml



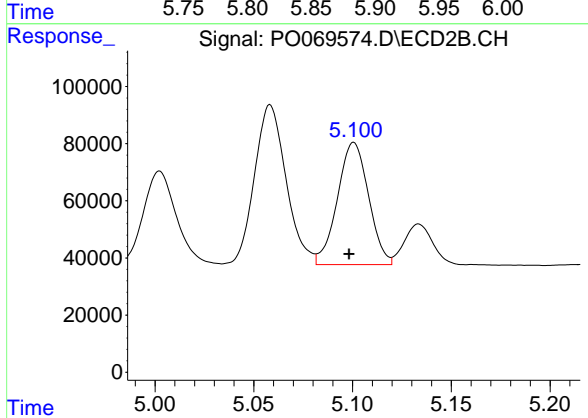
#18 AR-1242-3

R.T.: 5.002 min
 Delta R.T.: 0.003 min
 Response: 378040
 Conc: 392.70 ng/ml

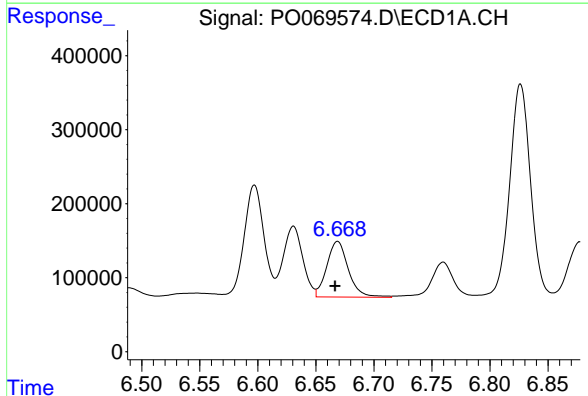


#19 AR-1242-4
 R.T.: 5.893 min
 Delta R.T.: 0.000 min
 Response: 349099
 Conc: 363.80 ng/ml

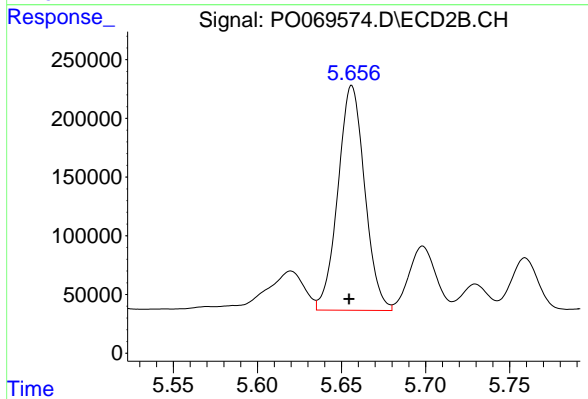
Instrument :
 ECD_O
 ClientSampleId :



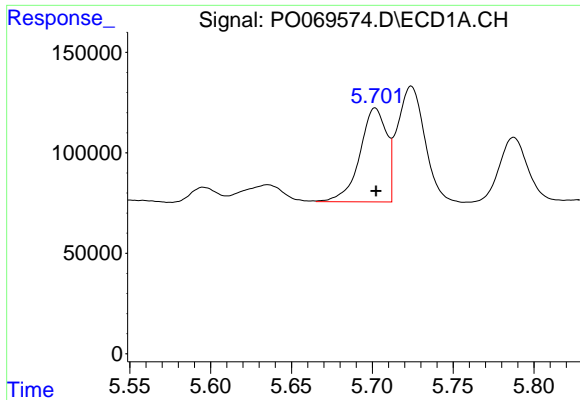
#19 AR-1242-4
 R.T.: 5.101 min
 Delta R.T.: 0.002 min
 Response: 469834
 Conc: 519.34 ng/ml



#20 AR-1242-5
 R.T.: 6.669 min
 Delta R.T.: 0.002 min
 Response: 973882
 Conc: 820.37 ng/ml



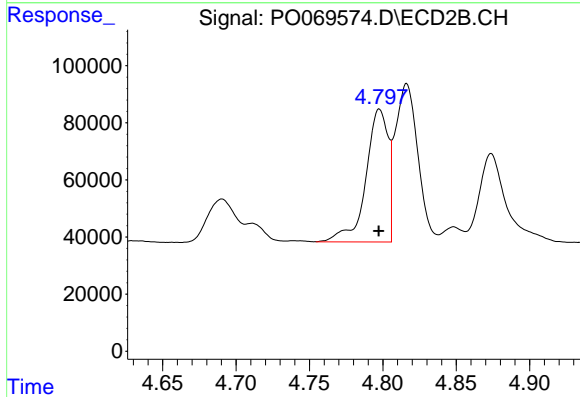
#20 AR-1242-5
 R.T.: 5.656 min
 Delta R.T.: 0.002 min
 Response: 2124663
 Conc: 1676.33 ng/ml



#21 AR-1248-1

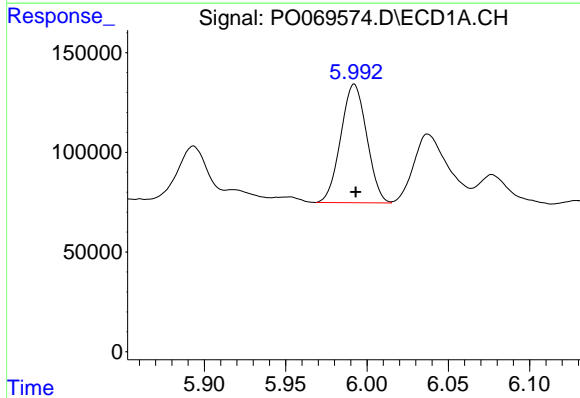
R.T.: 5.702 min
 Delta R.T.: 0.000 min
 Response: 539290
 Conc: 552.23 ng/ml

Instrument :
 ECD_O
 ClientSampleId :



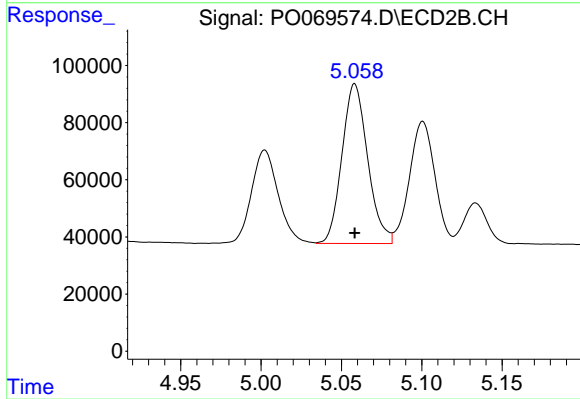
#21 AR-1248-1

R.T.: 4.798 min
 Delta R.T.: 0.000 min
 Response: 491373
 Conc: 502.09 ng/ml



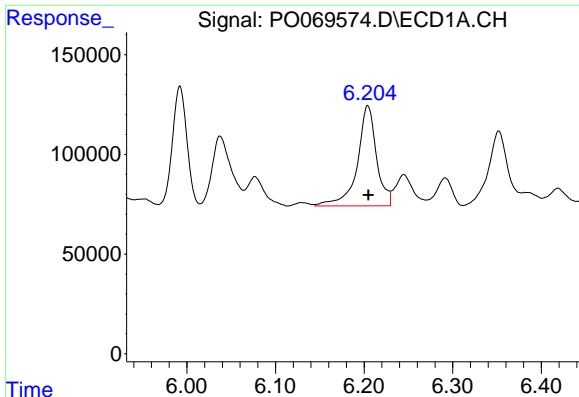
#22 AR-1248-2

R.T.: 5.992 min
 Delta R.T.: 0.000 min
 Response: 660821
 Conc: 519.01 ng/ml



#22 AR-1248-2

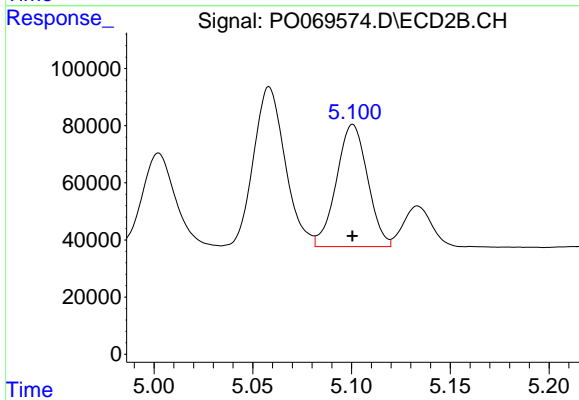
R.T.: 5.058 min
 Delta R.T.: 0.000 min
 Response: 622660
 Conc: 457.37 ng/ml



#23 AR-1248-3

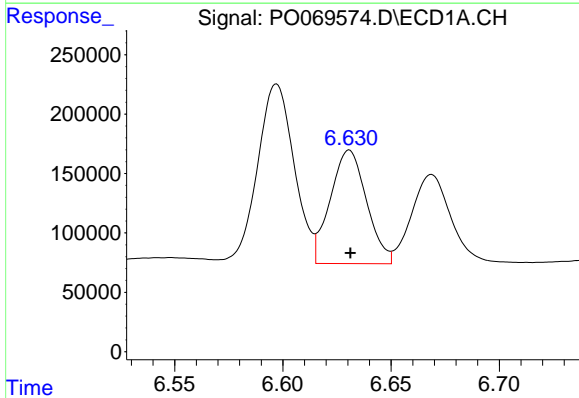
R.T.: 6.204 min
Delta R.T.: 0.000 min
Response: 756446
Conc: 478.62 ng/ml

Instrument :
ECD_O
ClientSampleId :



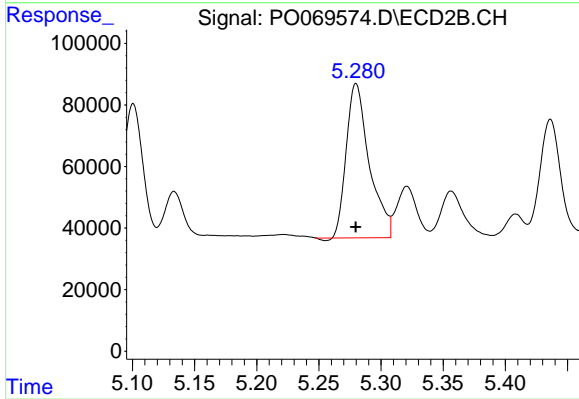
#23 AR-1248-3

R.T.: 5.101 min
Delta R.T.: 0.000 min
Response: 469834
Conc: 372.02 ng/ml



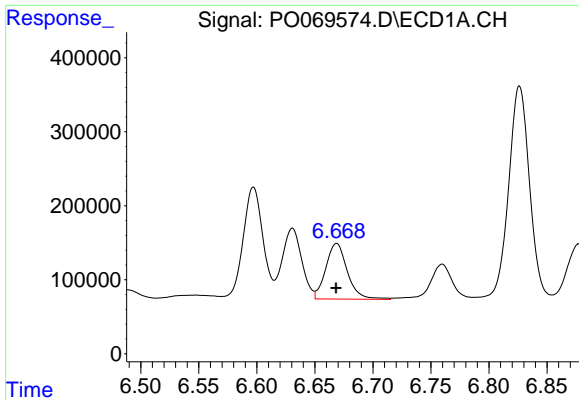
#24 AR-1248-4

R.T.: 6.631 min
Delta R.T.: 0.000 min
Response: 1116746
Conc: 550.37 ng/ml



#24 AR-1248-4

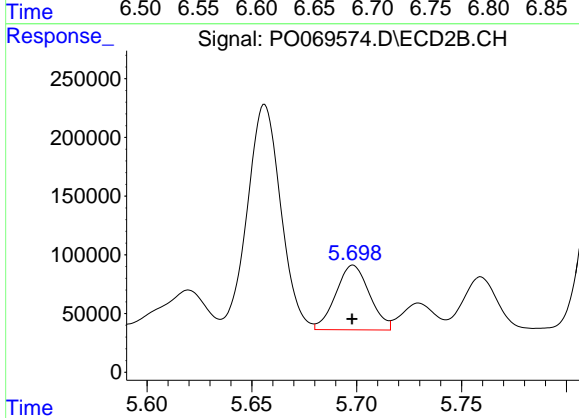
R.T.: 5.280 min
Delta R.T.: 0.000 min
Response: 645531
Conc: 397.41 ng/ml



#25 AR-1248-5

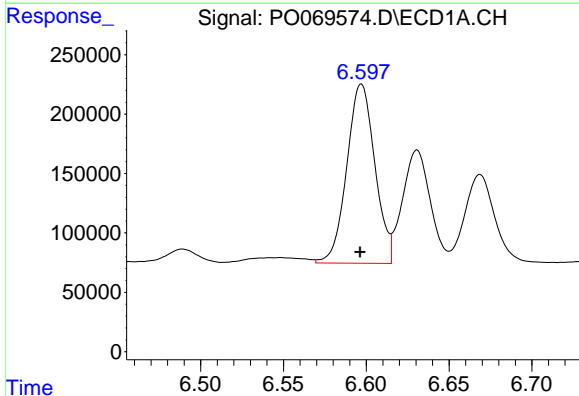
R.T.: 6.669 min
 Delta R.T.: 0.000 min
 Response: 973882
 Conc: 507.43 ng/ml

Instrument :
 ECD_O
 ClientSampled :



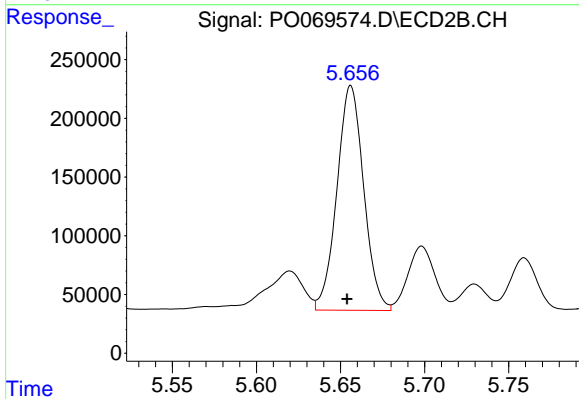
#25 AR-1248-5

R.T.: 5.698 min
 Delta R.T.: 0.000 min
 Response: 617644
 Conc: 374.29 ng/ml



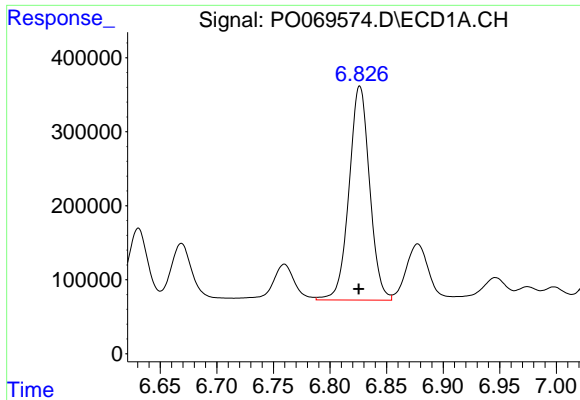
#26 AR-1254-1

R.T.: 6.597 min
 Delta R.T.: 0.000 min
 Response: 1779751
 Conc: 894.09 ng/ml



#26 AR-1254-1

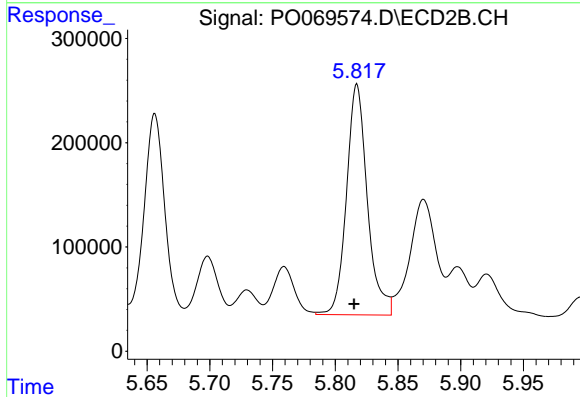
R.T.: 5.656 min
 Delta R.T.: 0.002 min
 Response: 2124663
 Conc: 816.21 ng/ml



#27 AR-1254-2

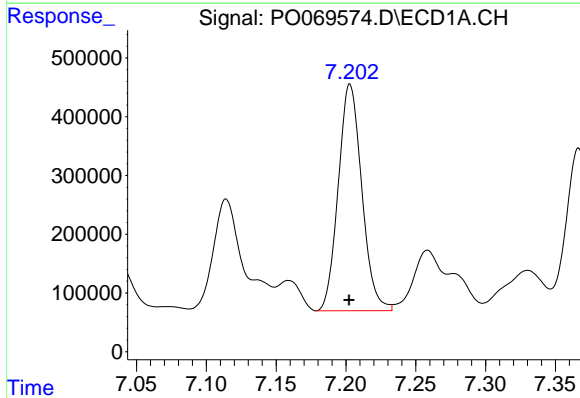
R.T.: 6.826 min
 Delta R.T.: 0.001 min
 Response: 3662437
 Conc: 1140.86 ng/ml

Instrument :
 ECD_O
 ClientSampleId :



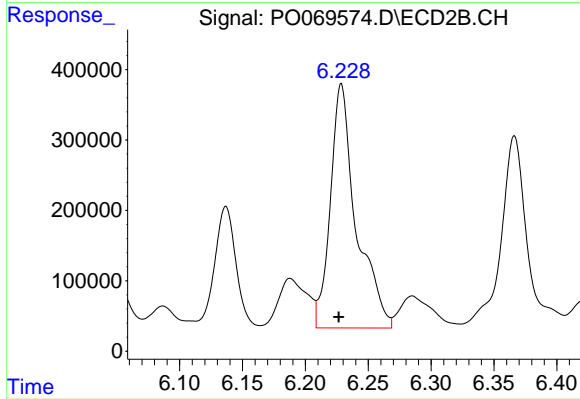
#27 AR-1254-2

R.T.: 5.817 min
 Delta R.T.: 0.002 min
 Response: 2564660
 Conc: 1110.93 ng/ml



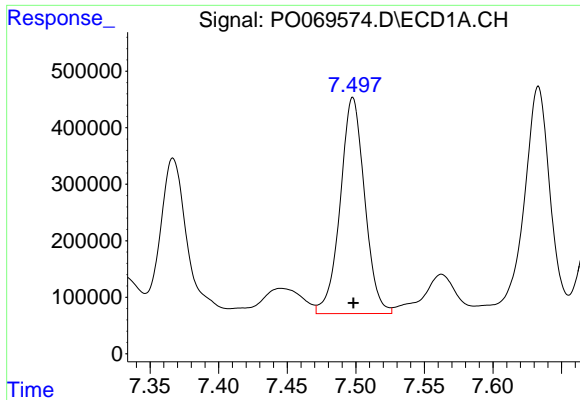
#28 AR-1254-3

R.T.: 7.203 min
 Delta R.T.: 0.000 min
 Response: 4526820
 Conc: 1288.92 ng/ml



#28 AR-1254-3

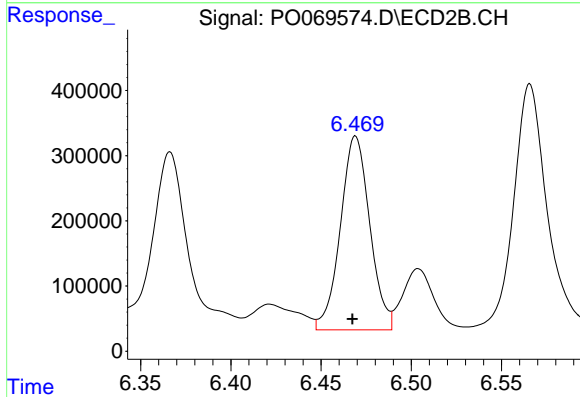
R.T.: 6.229 min
 Delta R.T.: 0.002 min
 Response: 4952311
 Conc: 1318.68 ng/ml



#29 AR-1254-4

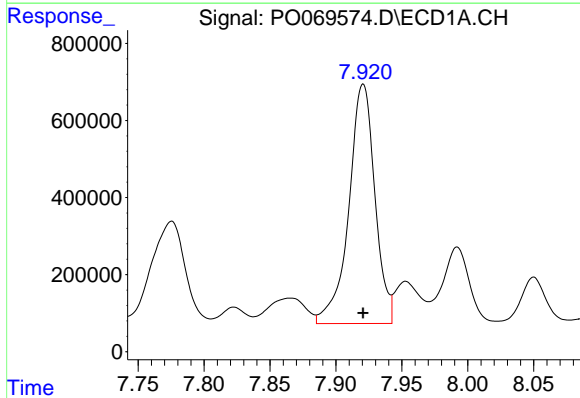
R.T.: 7.498 min
 Delta R.T.: 0.000 min
 Response: 4741615
 Conc: 1584.30 ng/ml

Instrument :
 ECD_O
 ClientSampleId :



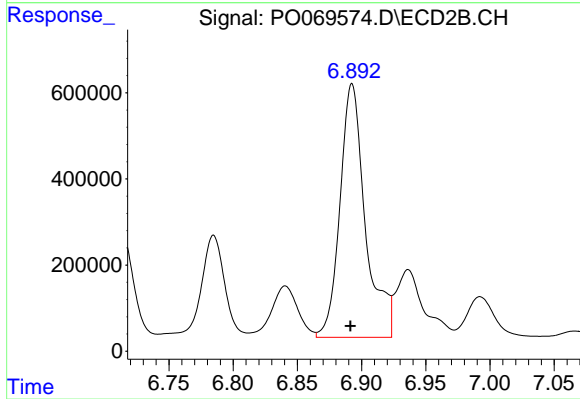
#29 AR-1254-4

R.T.: 6.469 min
 Delta R.T.: 0.002 min
 Response: 3378679
 Conc: 1336.96 ng/ml



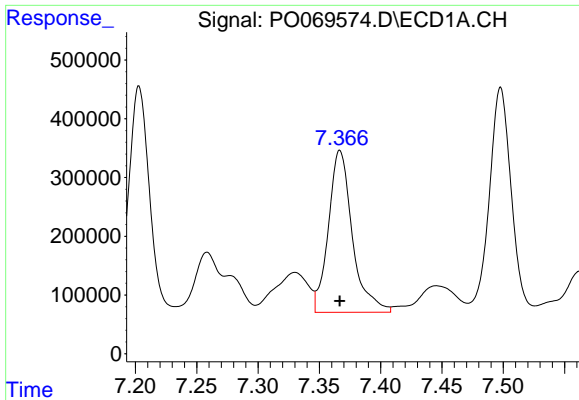
#30 AR-1254-5

R.T.: 7.921 min
 Delta R.T.: 0.000 min
 Response: 8562293
 Conc: 2845.76 ng/ml



#30 AR-1254-5

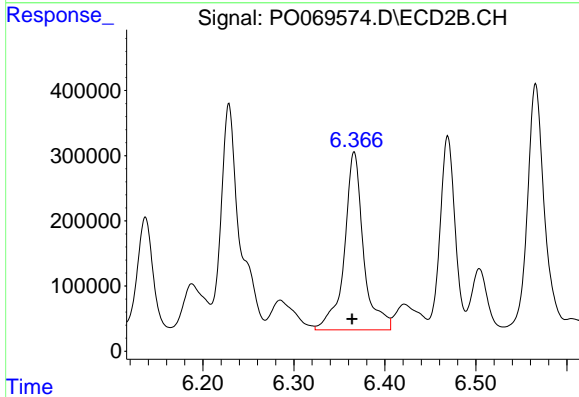
R.T.: 6.893 min
 Delta R.T.: 0.001 min
 Response: 8101549
 Conc: 2257.36 ng/ml



#31 AR-1260-1

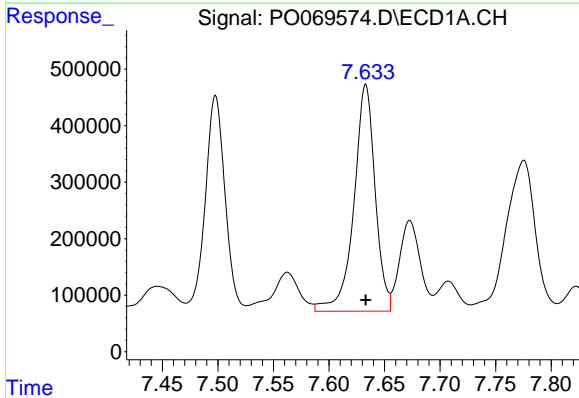
R.T.: 7.367 min
 Delta R.T.: 0.000 min
 Response: 3753481
 Conc: 1427.50 ng/ml

Instrument :
 ECD_O
 ClientSampleId :



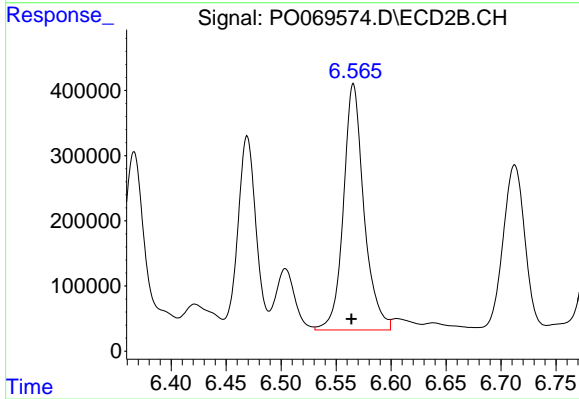
#31 AR-1260-1

R.T.: 6.366 min
 Delta R.T.: 0.003 min
 Response: 3993524
 Conc: 1514.09 ng/ml



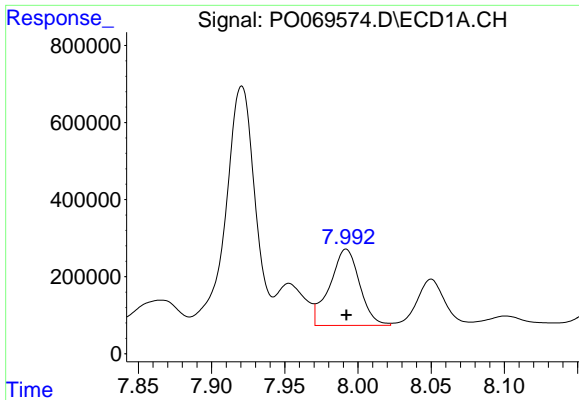
#32 AR-1260-2

R.T.: 7.633 min
 Delta R.T.: 0.000 min
 Response: 5340565
 Conc: 1505.49 ng/ml



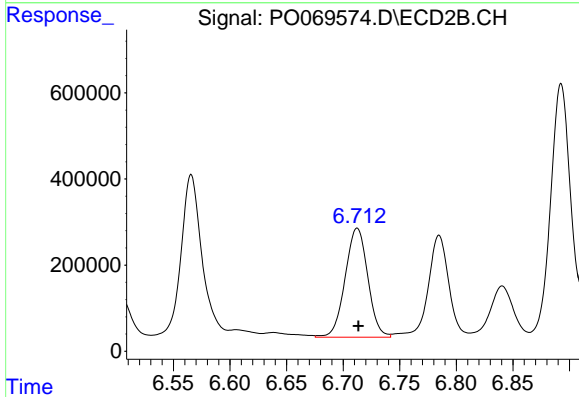
#32 AR-1260-2

R.T.: 6.566 min
 Delta R.T.: 0.002 min
 Response: 4908238
 Conc: 1499.54 ng/ml

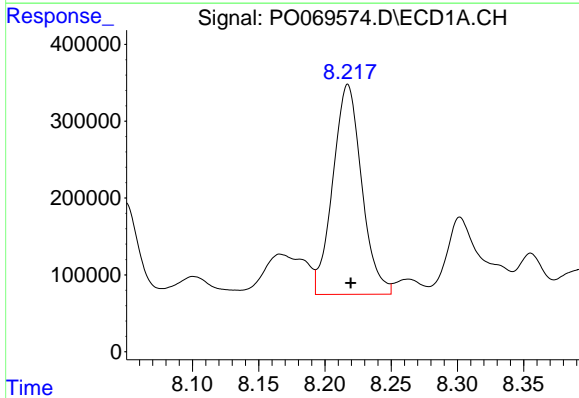


#33 AR-1260-3
 R.T.: 7.992 min
 Delta R.T.: 0.000 min
 Response: 2815242
 Conc: 973.80 ng/ml

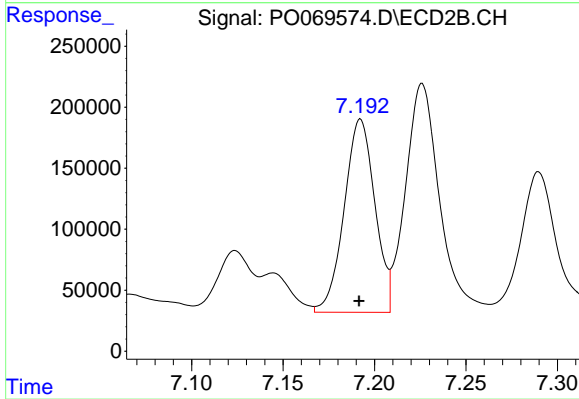
Instrument :
 ECD_O
 ClientSampleId :



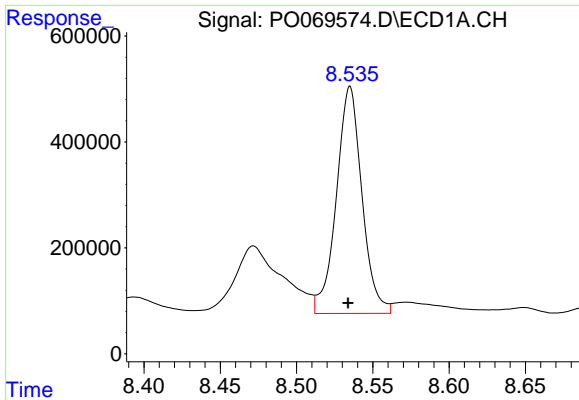
#33 AR-1260-3
 R.T.: 6.712 min
 Delta R.T.: -0.001 min
 Response: 3535243
 Conc: 1161.14 ng/ml



#34 AR-1260-4
 R.T.: 8.217 min
 Delta R.T.: -0.002 min
 Response: 4144032
 Conc: 1399.10 ng/ml

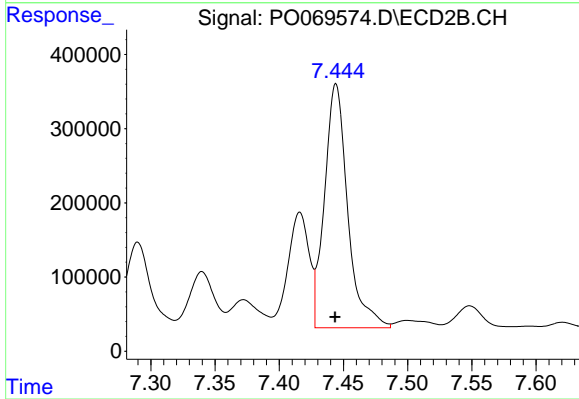


#34 AR-1260-4
 R.T.: 7.192 min
 Delta R.T.: 0.000 min
 Response: 1851907
 Conc: 684.17 ng/ml

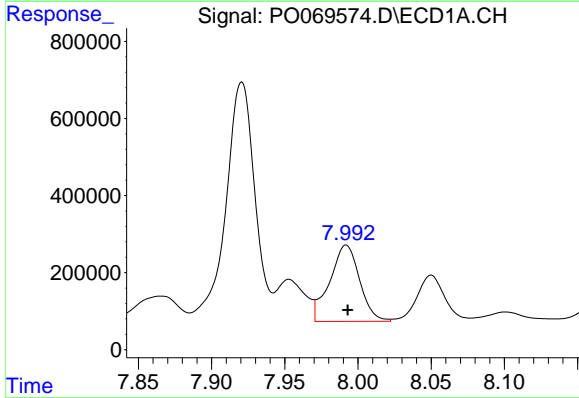


#35 AR-1260-5
R.T.: 8.535 min
Delta R.T.: 0.001 min
Response: 5002414
Conc: 739.30 ng/ml

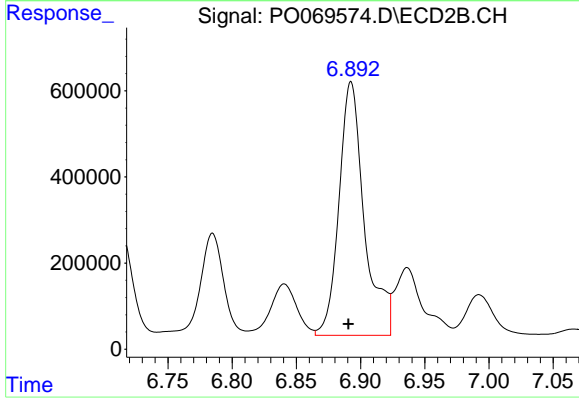
Instrument :
ECD_O
ClientSampled :



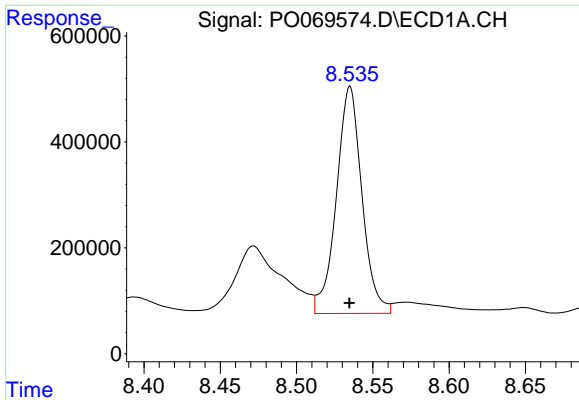
#35 AR-1260-5
R.T.: 7.444 min
Delta R.T.: 0.000 min
Response: 4147131
Conc: 647.12 ng/ml



#36 AR-1262-1
R.T.: 7.992 min
Delta R.T.: 0.000 min
Response: 2815242
Conc: 707.44 ng/ml

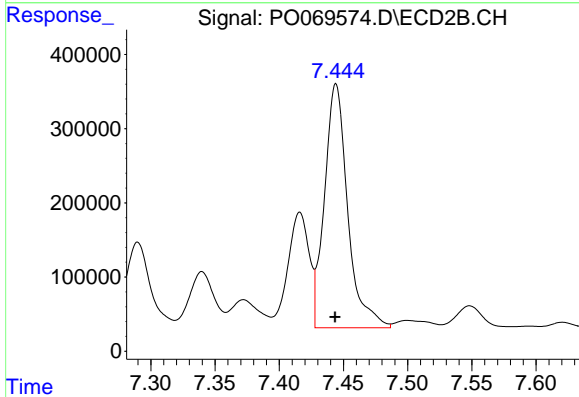


#36 AR-1262-1
R.T.: 6.893 min
Delta R.T.: 0.002 min
Response: 8101549
Conc: 4195.52 ng/ml

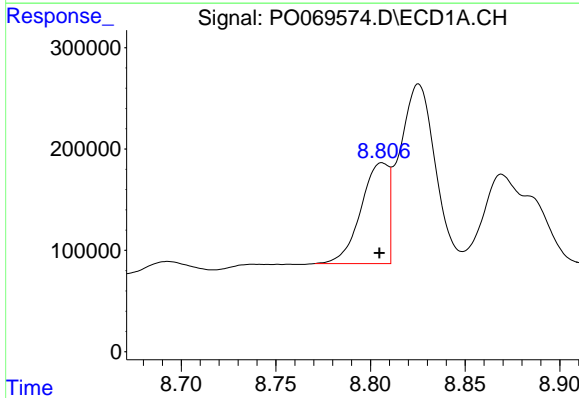


#37 AR-1262-2
 R.T.: 8.535 min
 Delta R.T.: 0.000 min
 Response: 5002414
 Conc: 693.04 ng/ml

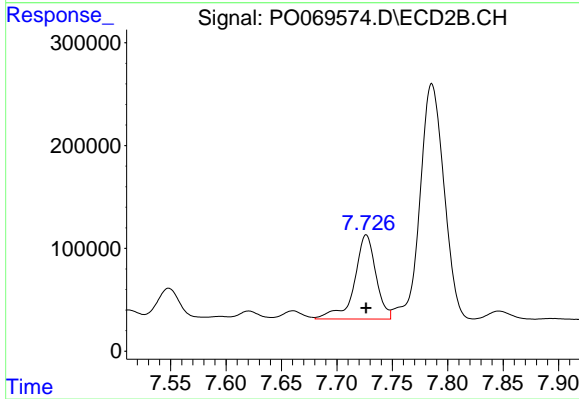
Instrument :
 ECD_O
 ClientSampleId :



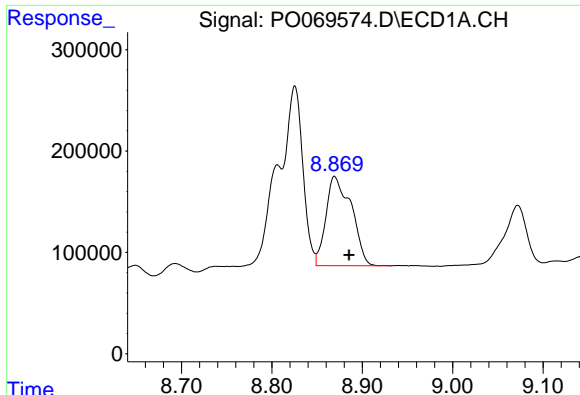
#37 AR-1262-2
 R.T.: 7.444 min
 Delta R.T.: 0.000 min
 Response: 4147131
 Conc: 635.16 ng/ml



#38 AR-1262-3
 R.T.: 8.806 min
 Delta R.T.: 0.002 min
 Response: 1008203
 Conc: 210.56 ng/ml

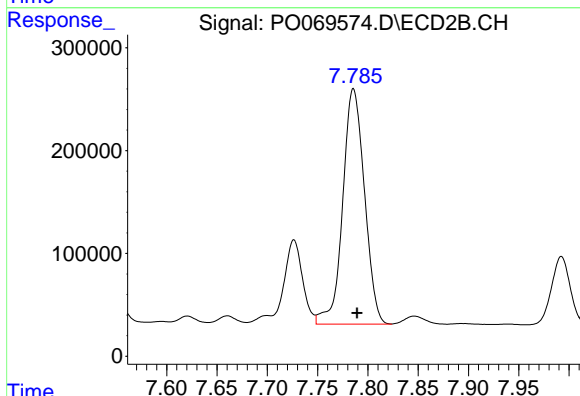


#38 AR-1262-3
 R.T.: 7.726 min
 Delta R.T.: 0.000 min
 Response: 1105293
 Conc: 410.12 ng/ml

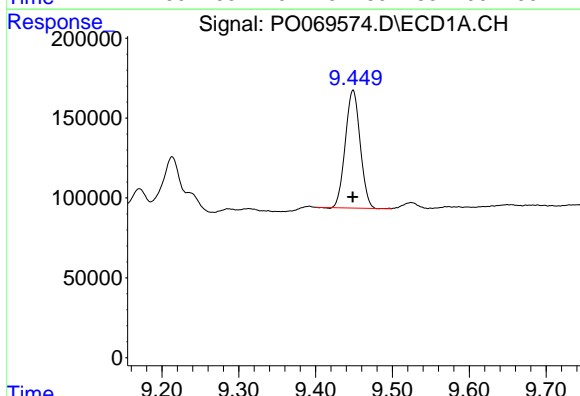


#39 AR-1262-4
 R.T.: 8.869 min
 Delta R.T.: -0.016 min
 Response: 1725260
 Conc: 890.04 ng/ml

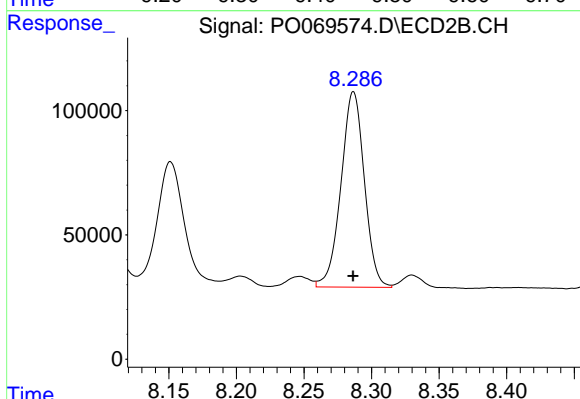
Instrument :
 ECD_O
 ClientSampleId :



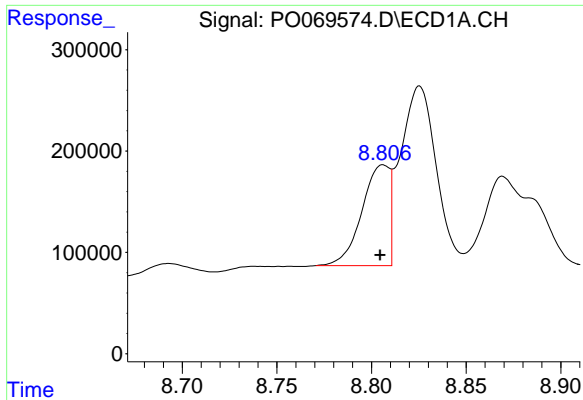
#39 AR-1262-4
 R.T.: 7.786 min
 Delta R.T.: -0.004 min
 Response: 3452980
 Conc: 693.49 ng/ml



#40 AR-1262-5
 R.T.: 9.449 min
 Delta R.T.: 0.000 min
 Response: 990023
 Conc: 379.59 ng/ml

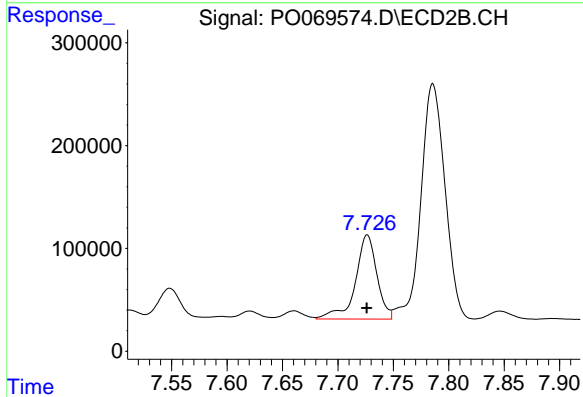


#40 AR-1262-5
 R.T.: 8.287 min
 Delta R.T.: 0.000 min
 Response: 945755
 Conc: 380.60 ng/ml

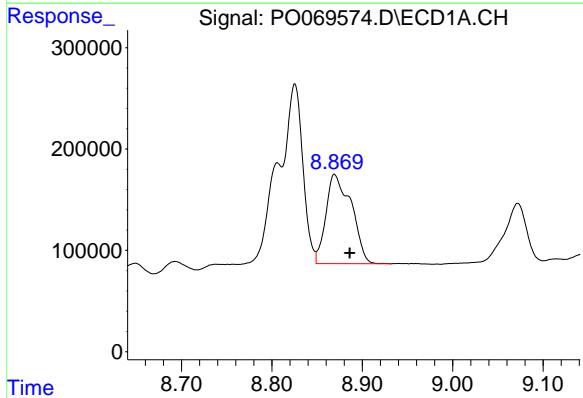


#41 AR-1268-1
 R.T.: 8.806 min
 Delta R.T.: 0.002 min
 Response: 1008203
 Conc: 109.99 ng/ml

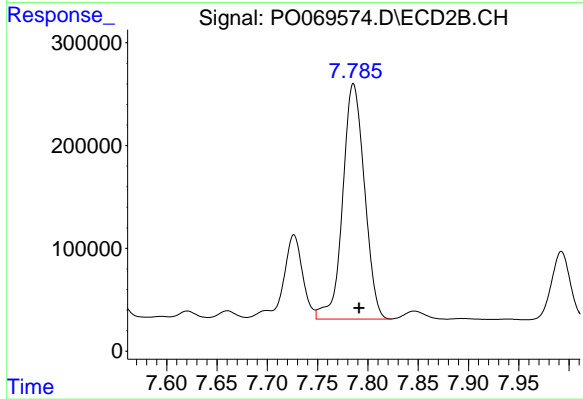
Instrument :
 ECD_O
 ClientSampleId :



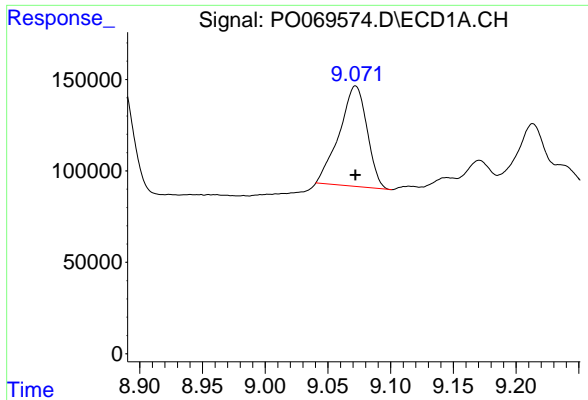
#41 AR-1268-1
 R.T.: 7.726 min
 Delta R.T.: 0.000 min
 Response: 1105293
 Conc: 141.20 ng/ml



#42 AR-1268-2
 R.T.: 8.869 min
 Delta R.T.: -0.017 min
 Response: 1725260
 Conc: 208.15 ng/ml

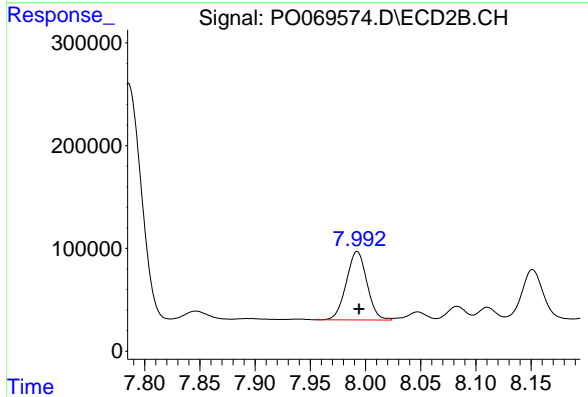


#42 AR-1268-2
 R.T.: 7.786 min
 Delta R.T.: -0.006 min
 Response: 3452980
 Conc: 483.41 ng/ml

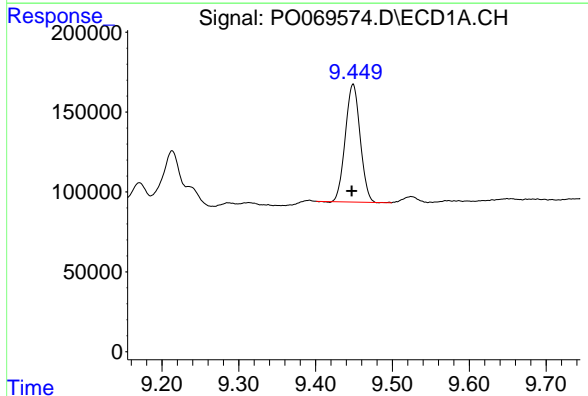


#43 AR-1268-3
 R.T.: 9.072 min
 Delta R.T.: 0.000 min
 Response: 843734
 Conc: 119.24 ng/ml

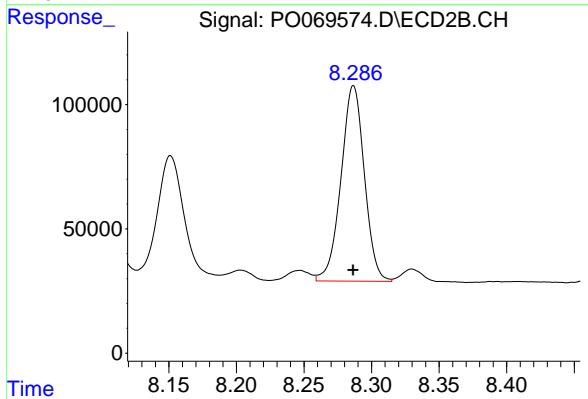
Instrument :
 ECD_O
 ClientSampled :



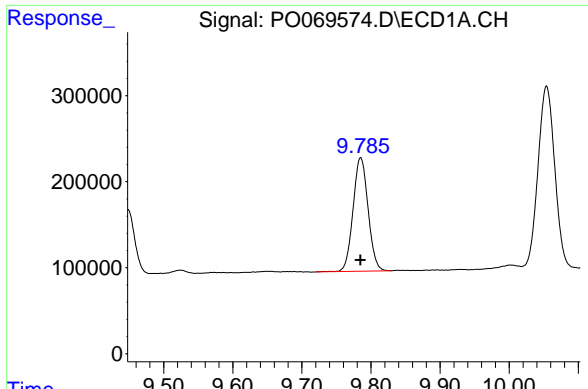
#43 AR-1268-3
 R.T.: 7.992 min
 Delta R.T.: -0.002 min
 Response: 868057
 Conc: 145.37 ng/ml



#44 AR-1268-4
 R.T.: 9.449 min
 Delta R.T.: 0.002 min
 Response: 990023
 Conc: 326.64 ng/ml



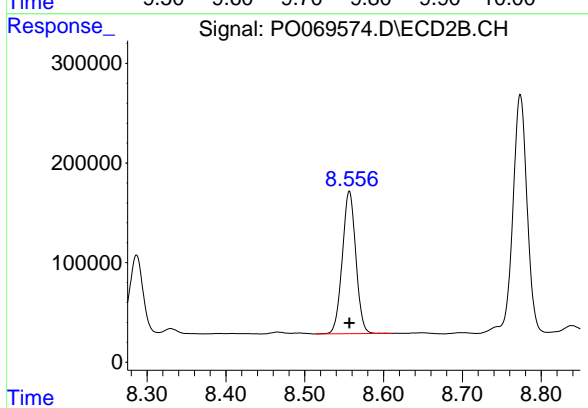
#44 AR-1268-4
 R.T.: 8.287 min
 Delta R.T.: 0.000 min
 Response: 945755
 Conc: 327.02 ng/ml



#45 AR-1268-5

R.T.: 9.785 min
Delta R.T.: 0.000 min
Response: 1994945
Conc: 89.80 ng/ml

Instrument :
ECD_O
ClientSampleId :



#45 AR-1268-5

R.T.: 8.557 min
Delta R.T.: 0.000 min
Response: 1703405
Conc: 88.34 ng/ml