

Data Path : Z:\pestpcbsrv\HPCHEM1\ECD_0\Data\P0071320\
 Data File : P0069587.D
 Signal(s) : Signal #1: ECD1A.CH Signal #2: ECD2B.CH
 Acq On : 13 Jul 2020 20:34
 Operator : DD\AJ
 Sample : I.BLK
 Misc :
 ALS Vial : 2 Sample Multiplier: 1

Instrument :
 ECD_0
 ClientSampleId :

Integration File signal 1: autoint1.e
 Integration File signal 2: autoint2.e
 Quant Time: Jul 14 00:54:56 2020
 Quant Method : Z:\pestpcbsrv\HPCHEM1\ECD_0\methods\P0070820.M
 Quant Title : GC EXTRACTABLES
 QLast Update : Wed Jul 08 16:12:41 2020
 Response via : Initial Calibration
 Integrator: ChemStation 6890 Scale Mode: Small noise peaks clipped

Volume Inj. : 2 µl
 Signal #1 Phase : ZB-MR1 Signal #2 Phase: ZB-MR2
 Signal #1 Info : 30Mx0.32mmx 0.50µ Signal #2 Info : 30M x 0.32mm x 0.25µm

Compound	RT#1	RT#2	Resp#1	Resp#2	ng/ml	ng/ml

System Monitoring Compounds						
1) SA Tetrachlo...	4.393	3.565	872148	926426	23.359	23.279
2) SA Decachlor...	10.053	8.773	1025556	923160	17.045	16.266

Target Compounds

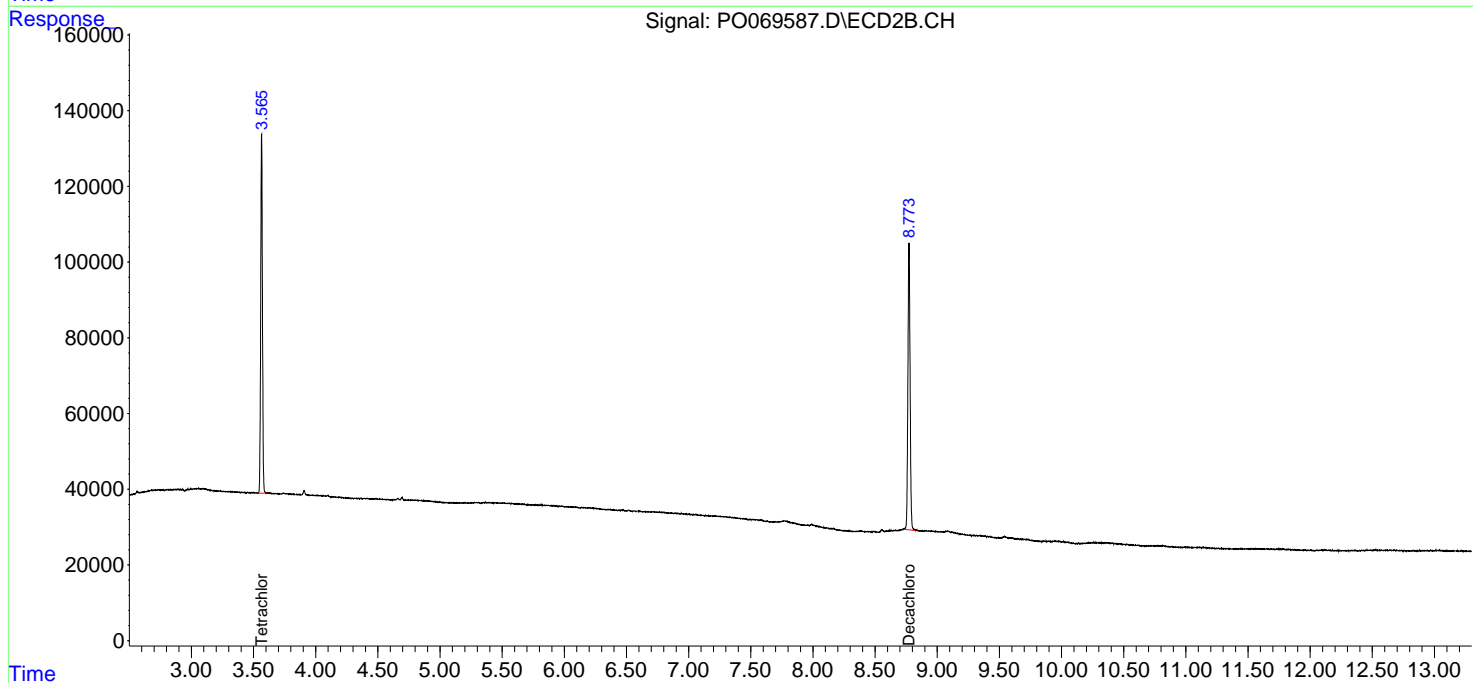
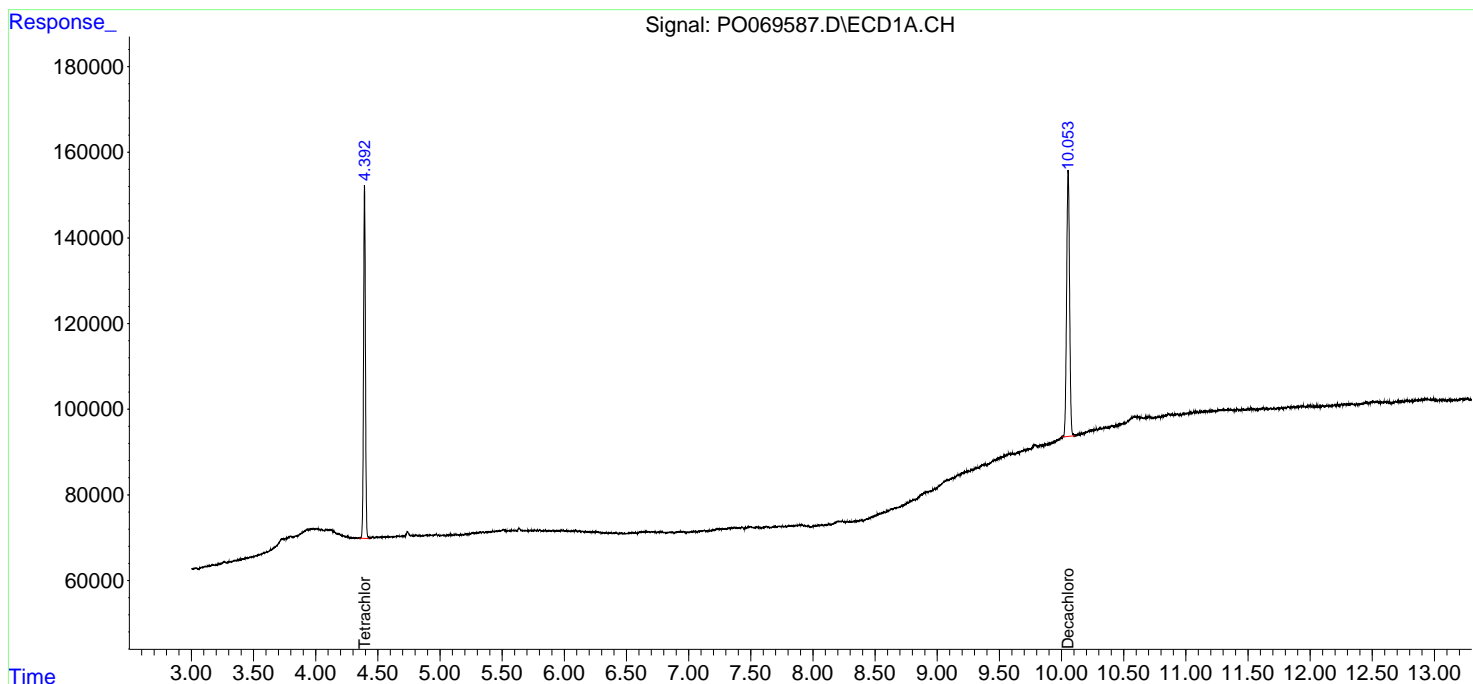
(f)=RT Delta > 1/2 Window (#)=Amounts differ by > 25% (m)=manual int.

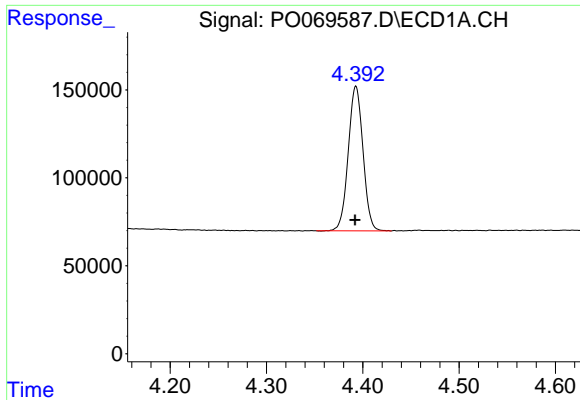
Data Path : Z:\pestpcbsrv\HPCHEM1\ECD_O\Data\P0071320\
 Data File : P0069587.D
 Signal(s) : Signal #1: ECD1A.CH Signal #2: ECD2B.CH
 Acq On : 13 Jul 2020 20:34
 Operator : DD\AJ
 Sample : I.BLK
 Misc :
 ALS Vial : 2 Sample Multiplier: 1

Instrument :
 ECD_O
 ClientSampled :

Integration File signal 1: autoint1.e
 Integration File signal 2: autoint2.e
 Quant Time: Jul 14 00:54:56 2020
 Quant Method : Z:\pestpcbsrv\HPCHEM1\ECD_O\methods\P0070820.M
 Quant Title : GC EXTRACTABLES
 QLast Update : Wed Jul 08 16:12:41 2020
 Response via : Initial Calibration
 Integrator: ChemStation 6890 Scale Mode: Small noise peaks clipped

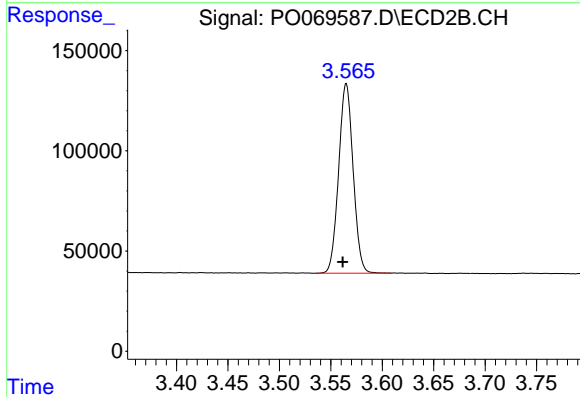
Volume Inj. : 2 µl
 Signal #1 Phase : ZB-MR1 Signal #2 Phase: ZB-MR2
 Signal #1 Info : 30Mx0.32mmx 0.50µ Signal #2 Info : 30M x 0.32mm x 0.25µm



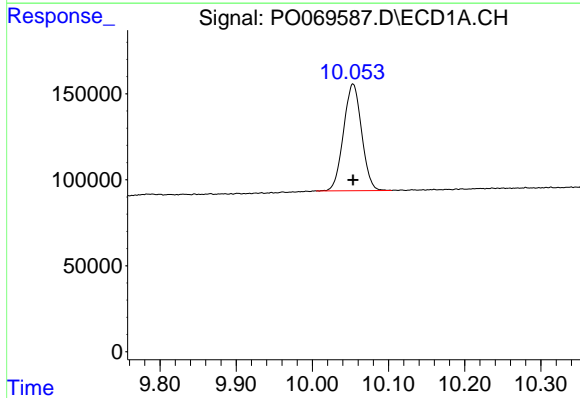


#1 Tetrachloro-m-xylene
 R.T.: 4.393 min
 Delta R.T.: 0.000 min
 Response: 872148
 Conc: 23.36 ng/ml

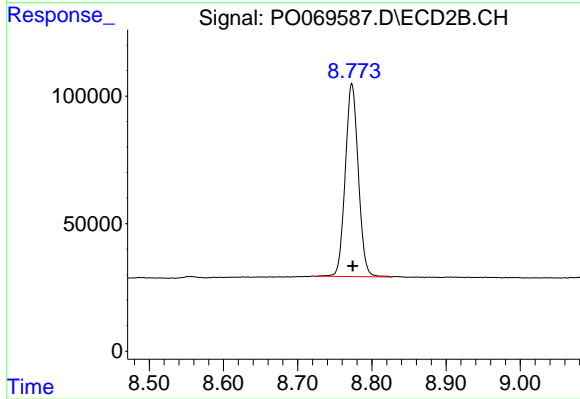
Instrument :
 ECD_O
 ClientSampleId :



#1 Tetrachloro-m-xylene
 R.T.: 3.565 min
 Delta R.T.: 0.003 min
 Response: 926426
 Conc: 23.28 ng/ml



#2 Decachlorobiphenyl
 R.T.: 10.053 min
 Delta R.T.: 0.000 min
 Response: 1025556
 Conc: 17.05 ng/ml



#2 Decachlorobiphenyl
 R.T.: 8.773 min
 Delta R.T.: -0.001 min
 Response: 923160
 Conc: 16.27 ng/ml