

Data Path : Z:\pestpcbsrv\HPCHEM1\ECD\_O\Data\PO071418\  
 Data File : PO046702.D  
 Signal(s) : Signal #1: ECD1A.CH Signal #2: ECD2B.CH  
 Acq On : 16 Jul 2018 00:41  
 Operator : SM/SJ  
 Sample : PB111111BSD  
 Misc :  
 ALS Vial : 15 Sample Multiplier: 1

Instrument :  
 ECD\_O  
 ClientSampleId :  
 PB111111BSD

Integration File signal 1: autoint1.e  
 Integration File signal 2: autoint2.e  
 Quant Time: Jul 16 05:16:22 2018  
 Quant Method : Z:\pestpcbsrv\HPCHEM1\ECD\_O\methods\PO070718.M  
 Quant Title : GC EXTRACTABLES  
 QLast Update : Mon Jul 09 15:27:34 2018  
 Response via : Initial Calibration  
 Integrator: ChemStation 6890 Scale Mode: Small noise peaks clipped

Volume Inj. : 2 µl  
 Signal #1 Phase : ZB-MR1 Signal #2 Phase: ZB-MR2  
 Signal #1 Info : 30Mx0.32mmx 0.50µ Signal #2 Info : 30M x 0.32mm x 0.25µm

Compound	RT#1	RT#2	Resp#1	Resp#2	ng/ml	ng/ml
-----						
System Monitoring Compounds						
1) SA Tetrachlo...	4.210	3.522	4285704	4197431	17.933	19.761
2) SA Decachlor...	9.736	8.455	3483030	3502826	18.274	18.058
Target Compounds						
3) L1 AR-1016-1	5.093	4.375	282271	431034	50.039	78.955 #
4) L1 AR-1016-2	5.440	4.825	365312	274733	51.043	56.659
5) L1 AR-1016-3	5.535	4.897	306295	130767	50.958	22.443 #
6) L1 AR-1016-4	5.829	5.036	220122	257919	37.742	40.601
7) L1 AR-1016-5	5.967	5.182	275819	343517	42.407	62.336 #
8) L2 AR-1221-1	0.000	3.818	0	144807	N.D.	54.150 #
9) L2 AR-1221-2	0.000	3.818	0	144807	N.D.	67.165 #
10) L2 AR-1221-3	4.573	3.893	534036	807492	70.651	117.865 #
11) L3 AR-1232-1	4.904	4.186	219745	475405	89.905	204.807 #
12) L3 AR-1232-2	5.357	4.610	475952	658094	134.446	191.040 #
13) L3 AR-1232-3	5.379	4.610	616098	658094	121.381	137.945
14) L3 AR-1232-4	5.440	4.666	365312	471907	112.107	134.280
15) L3 AR-1232-5	5.535	4.784	306295	394469	115.354	141.618
16) L4 AR-1242-1	5.379	4.610	616098	658094	60.591	68.696
17) L4 AR-1242-2	5.440	4.784	365312	394469	56.430	71.071 #
18) L4 AR-1242-3	5.535	4.897	306295	130767	56.221	25.183 #
19) L4 AR-1242-4	5.829	5.036	220122	257919	41.204	45.449
20) L4 AR-1242-5	5.967	5.182	275819	343517	45.724	66.313 #
21) L5 AR-1248-1	5.829	5.036	220122	257919	27.744	30.500
22) L5 AR-1248-2	5.967	5.182	275819	343517	38.952	53.819 #
23) L5 AR-1248-3	6.203	5.384	123813	330737	13.513	26.877 #
24) L5 AR-1248-4	6.203	5.384	123813	330737	13.958	37.994 #
25) L5 AR-1248-5	6.418	5.944	269801	620547	29.646	105.993 #
26) L6 AR-1254-1	6.418	5.384	269801	330737	19.349	24.735 #
27) L6 AR-1254-2	0.000	5.529	0	342055	N.D.	29.592 #
28) L6 AR-1254-3	6.778	5.944	212175	620547	13.877	31.530 #
29) L6 AR-1254-4	7.062	6.185	114103	138447	9.941	10.980
30) L6 AR-1254-5	7.324	6.517	276257	486155	31.129	53.599 #
31) L7 AR-1260-1	6.943	6.058	618612	693421	53.861	53.159
32) L7 AR-1260-2	7.198	6.244	705021	863209	52.225	54.135
33) L7 AR-1260-3	7.476	6.570	759228	1392060	46.926	77.626 #
34) L7 AR-1260-4	8.080	7.105	1000539	1730169	47.591	62.276 #
35) L7 AR-1260-5	8.379	7.449	616408	1005114	45.704	52.318
36) L8 AR-1262-1	6.943	6.244	618612	863209	64.940	65.907
37) L8 AR-1262-2	7.198	6.397	705021	861561	63.302	66.510
38) L8 AR-1262-3	7.554	6.607	381431	937422	26.638	53.531 #

Data Path : Z:\pestpcbsrv\HPCHEM1\ECD\_O\Data\PO071418\  
 Data File : PO046702.D  
 Signal(s) : Signal #1: ECD1A.CH Signal #2: ECD2B.CH  
 Acq On : 16 Jul 2018 00:41  
 Operator : SM/SJ  
 Sample : PB111111BSD  
 Misc :  
 ALS Vial : 15 Sample Multiplier: 1

Instrument :  
 ECD\_O  
 ClientSampleId :  
 PB111111BSD

Integration File signal 1: autoint1.e  
 Integration File signal 2: autoint2.e  
 Quant Time: Jul 16 05:16:22 2018  
 Quant Method : Z:\pestpcbsrv\HPCHEM1\ECD\_O\methods\PO070718.M  
 Quant Title : GC EXTRACTABLES  
 QLast Update : Mon Jul 09 15:27:34 2018  
 Response via : Initial Calibration  
 Integrator: ChemStation 6890 Scale Mode: Small noise peaks clipped

Volume Inj. : 2 µl  
 Signal #1 Phase : ZB-MR1 Signal #2 Phase: ZB-MR2  
 Signal #1 Info : 30Mx0.32mmx 0.50µ Signal #2 Info : 30M x 0.32mm x 0.25µm

	Compound	RT#1	RT#2	Resp#1	Resp#2	ng/ml	ng/ml	
39)	L8 AR-1262-4	7.776	6.905	528473	1071316	39.306	70.080	#
40)	L8 AR-1262-5	8.080	7.105	1000539	1730169	41.337	56.050	#
41)	L9 AR-1268-1	8.379	7.386	616408	417961	25.288	14.935	#
42)	L9 AR-1268-2	0.000	7.449	0	1005114	N.D.	36.485	#
44)	L9 AR-1268-4	9.052	7.940	235219	292465	27.734	30.729	
45)	L9 AR-1268-5	0.000	8.216	0	124258	N.D.	1.968	#

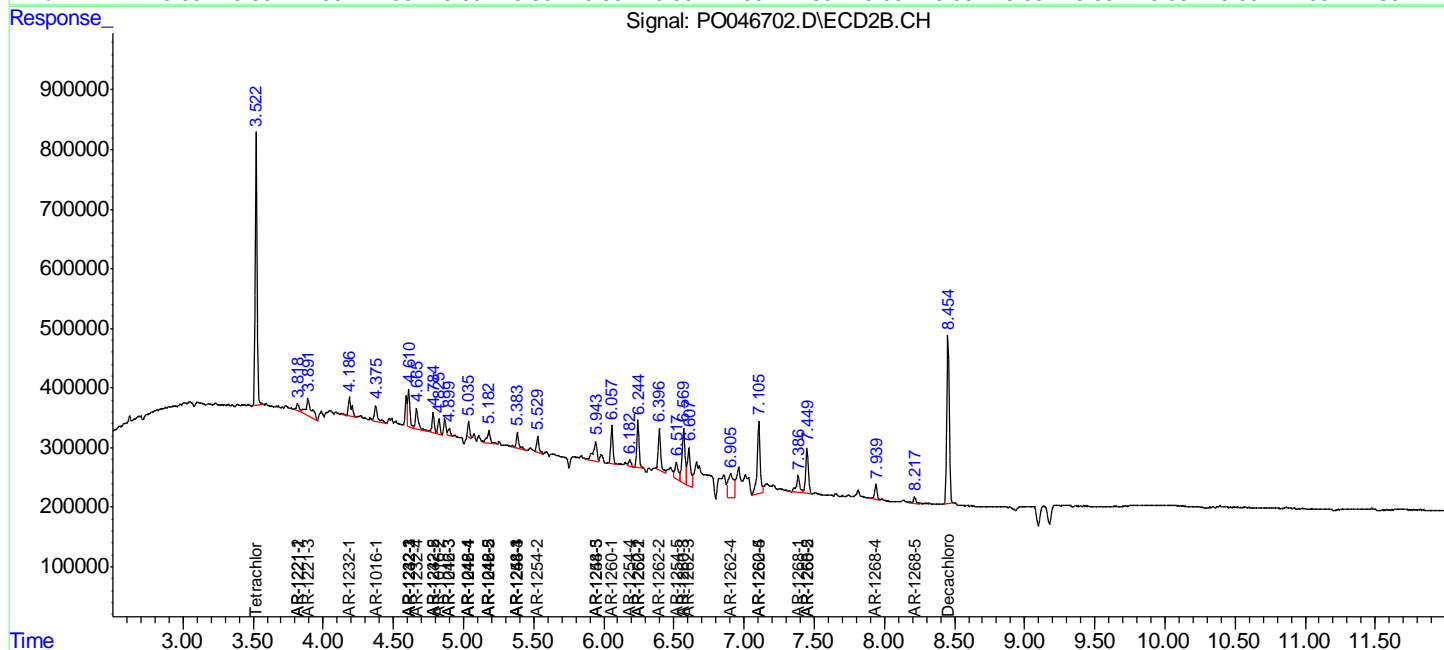
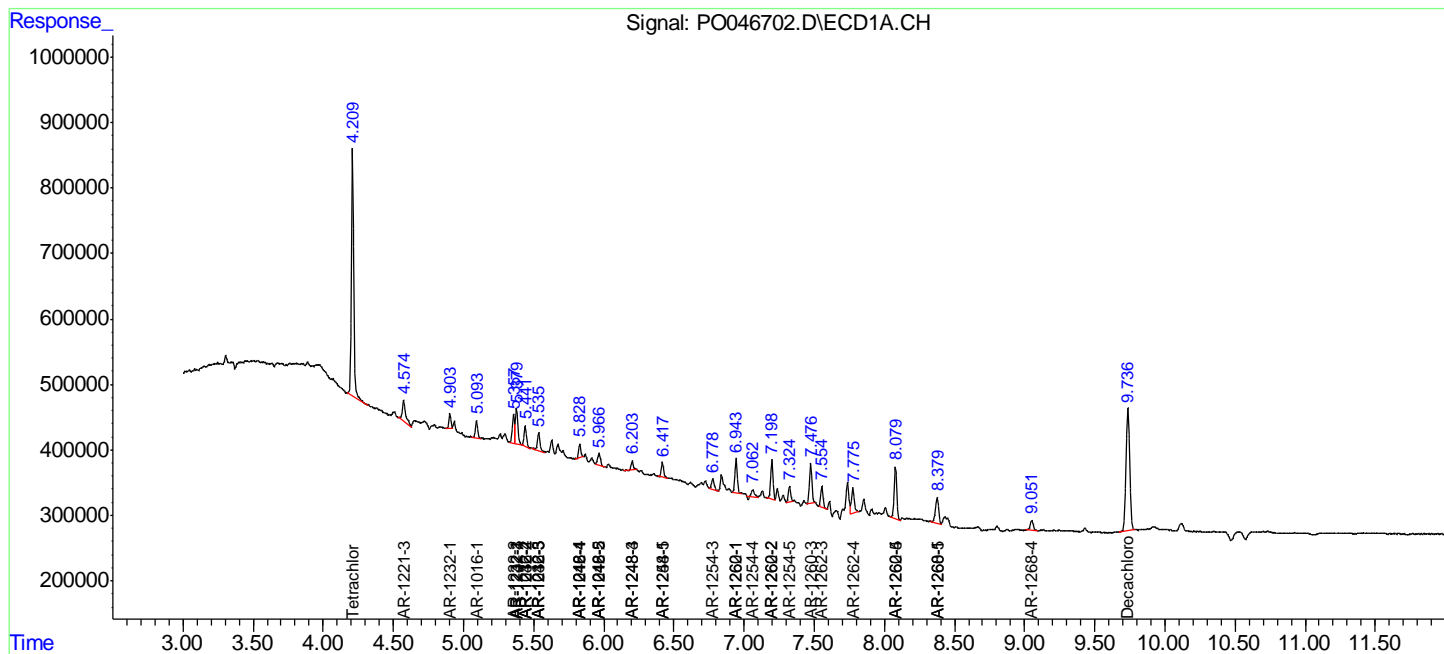
(f)=RT Delta > 1/2 Window (#)=Amounts differ by > 25% (m)=manual int.

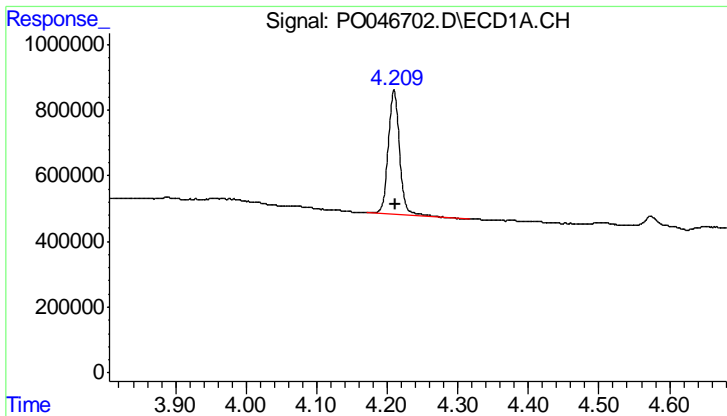
Data Path : Z:\pestpcbsrv\HPCHEM1\ECD\_O\Data\PO071418\  
 Data File : PO046702.D  
 Signal(s) : Signal #1: ECD1A.CH Signal #2: ECD2B.CH  
 Acq On : 16 Jul 2018 00:41  
 Operator : SM/SJ  
 Sample : PB111111BSD  
 Misc :  
 ALS Vial : 15 Sample Multiplier: 1

Instrument :  
 ECD\_O  
 ClientSampleId :  
 PB111111BSD

Integration File signal 1: autoint1.e  
 Integration File signal 2: autoint2.e  
 Quant Time: Jul 16 05:16:22 2018  
 Quant Method : Z:\pestpcbsrv\HPCHEM1\ECD\_O\methods\PO070718.M  
 Quant Title : GC EXTRACTABLES  
 QLast Update : Mon Jul 09 15:27:34 2018  
 Response via : Initial Calibration  
 Integrator: ChemStation 6890 Scale Mode: Small noise peaks clipped

Volume Inj. : 2 µl  
 Signal #1 Phase : ZB-MR1 Signal #2 Phase: ZB-MR2  
 Signal #1 Info : 30Mx0.32mmx 0.50µ Signal #2 Info : 30M x 0.32mm x 0.25µm

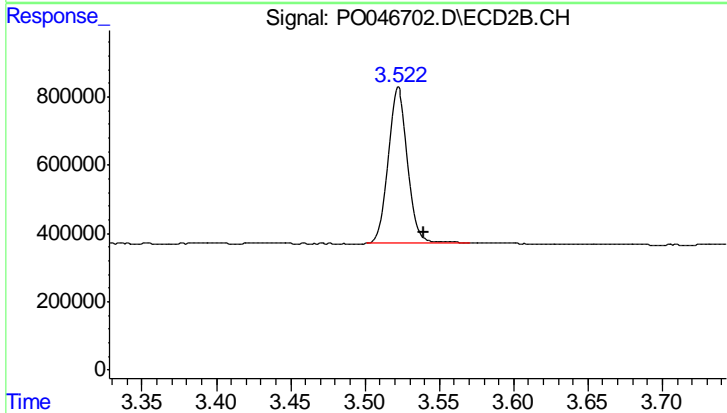




#1 Tetrachloro-m-xylene

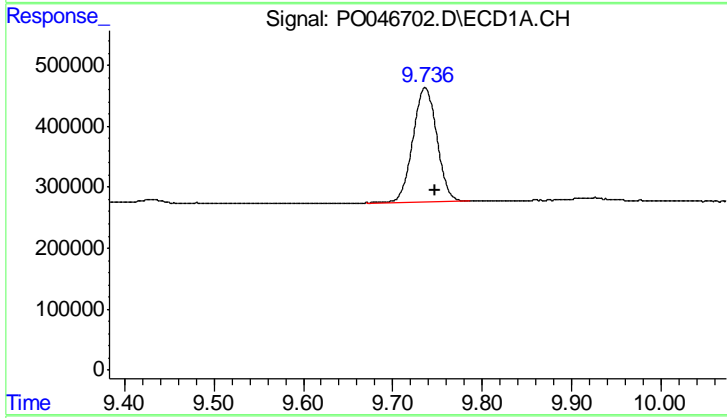
R.T.: 4.210 min  
 Delta R.T.: -0.003 min  
 Response: 4285704  
 Conc: 17.93 ng/ml

Instrument :  
 ECD\_O  
 ClientSampleId :  
 PB111111BSD



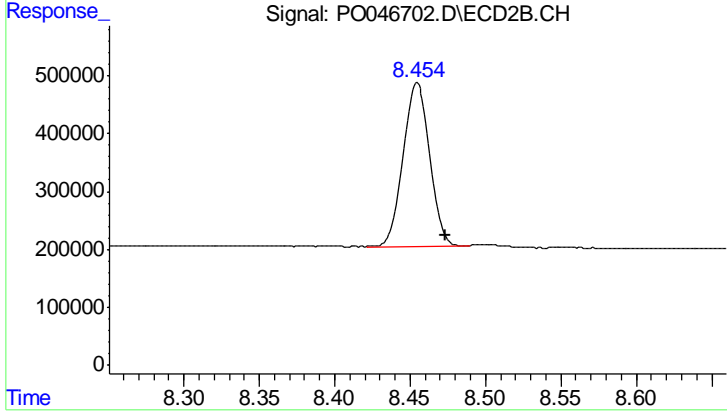
#1 Tetrachloro-m-xylene

R.T.: 3.522 min  
 Delta R.T.: -0.017 min  
 Response: 4197431  
 Conc: 19.76 ng/ml



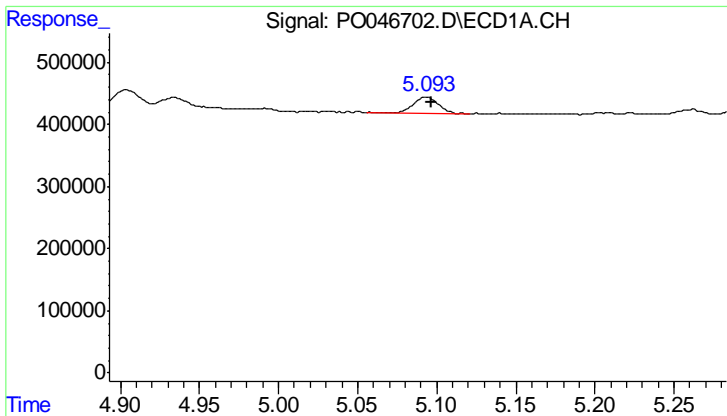
#2 Decachlorobiphenyl

R.T.: 9.736 min  
 Delta R.T.: -0.012 min  
 Response: 3483030  
 Conc: 18.27 ng/ml



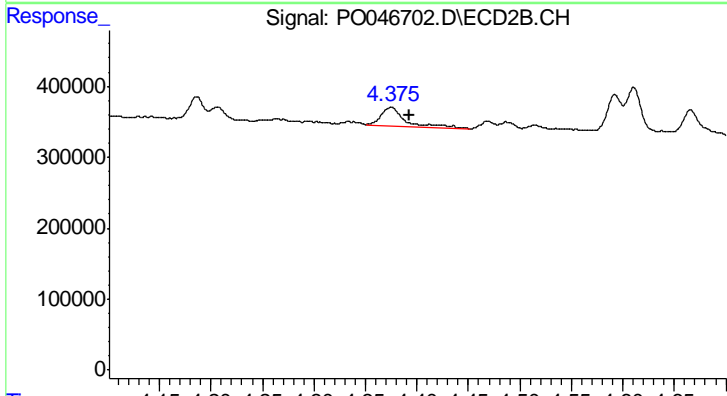
#2 Decachlorobiphenyl

R.T.: 8.455 min  
 Delta R.T.: -0.019 min  
 Response: 3502826  
 Conc: 18.06 ng/ml

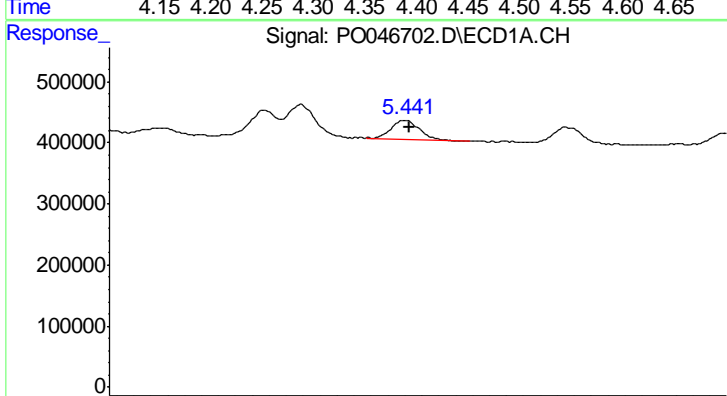


#3 AR-1016-1  
 R.T.: 5.093 min  
 Delta R.T.: -0.003 min  
 Response: 282271  
 Conc: 50.04 ng/ml

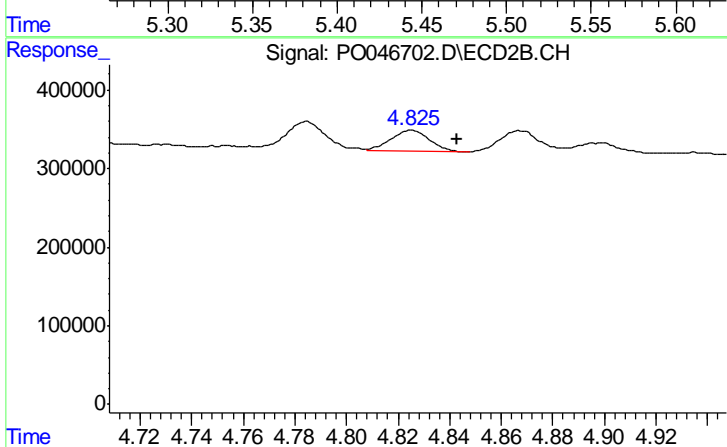
Instrument :  
 ECD\_O  
 ClientSampleId :  
 PB111111BSD



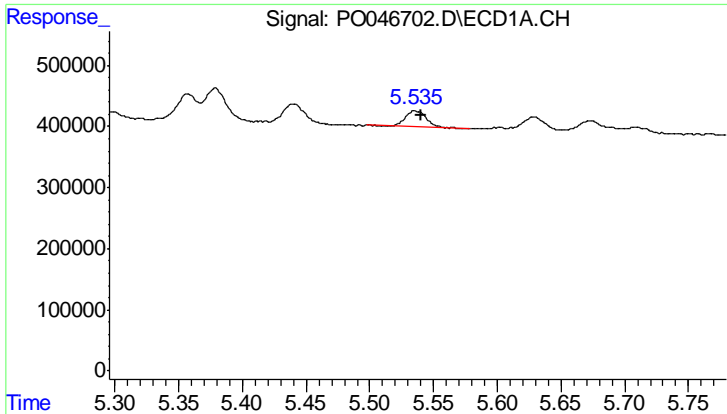
#3 AR-1016-1  
 R.T.: 4.375 min  
 Delta R.T.: -0.018 min  
 Response: 431034  
 Conc: 78.96 ng/ml



#4 AR-1016-2  
 R.T.: 5.440 min  
 Delta R.T.: -0.003 min  
 Response: 365312  
 Conc: 51.04 ng/ml

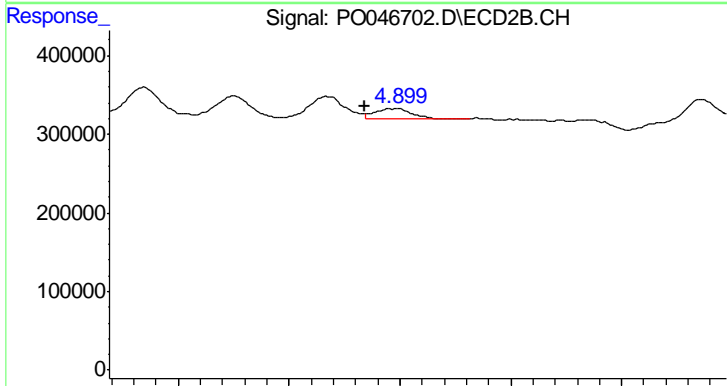


#4 AR-1016-2  
 R.T.: 4.825 min  
 Delta R.T.: -0.018 min  
 Response: 274733  
 Conc: 56.66 ng/ml

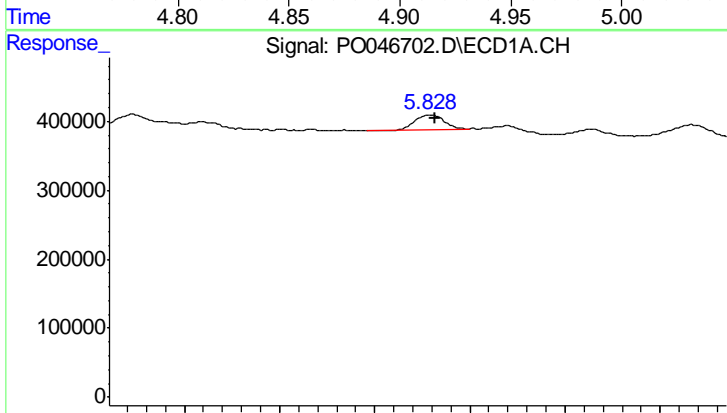


#5 AR-1016-3  
 R.T.: 5.535 min  
 Delta R.T.: -0.005 min  
 Response: 306295  
 Conc: 50.96 ng/ml

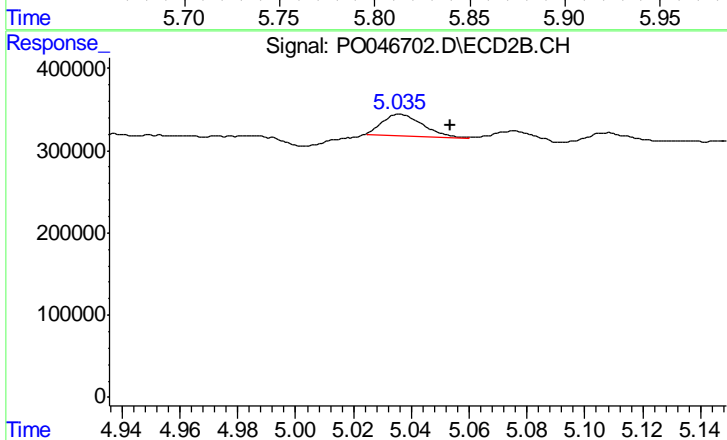
Instrument :  
 ECD\_O  
 ClientSampleId :  
 PB111111BSD



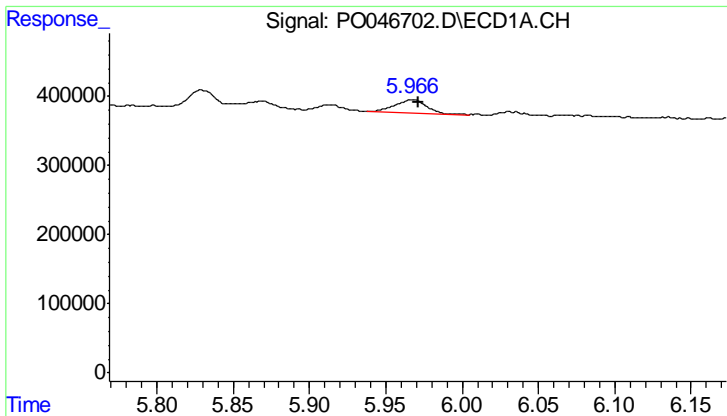
#5 AR-1016-3  
 R.T.: 4.897 min  
 Delta R.T.: 0.013 min  
 Response: 130767  
 Conc: 22.44 ng/ml



#6 AR-1016-4  
 R.T.: 5.829 min  
 Delta R.T.: -0.003 min  
 Response: 220122  
 Conc: 37.74 ng/ml



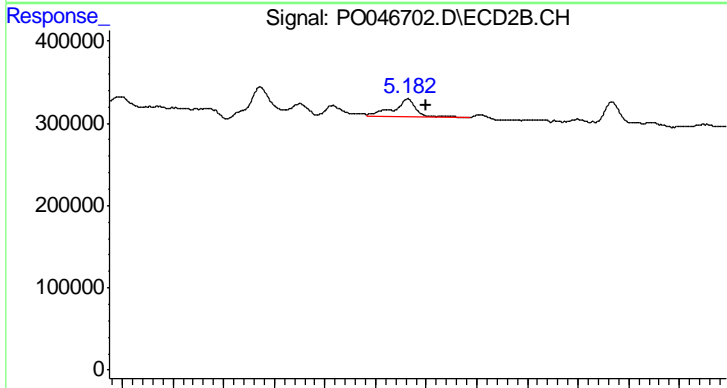
#6 AR-1016-4  
 R.T.: 5.036 min  
 Delta R.T.: -0.017 min  
 Response: 257919  
 Conc: 40.60 ng/ml



#7 AR-1016-5

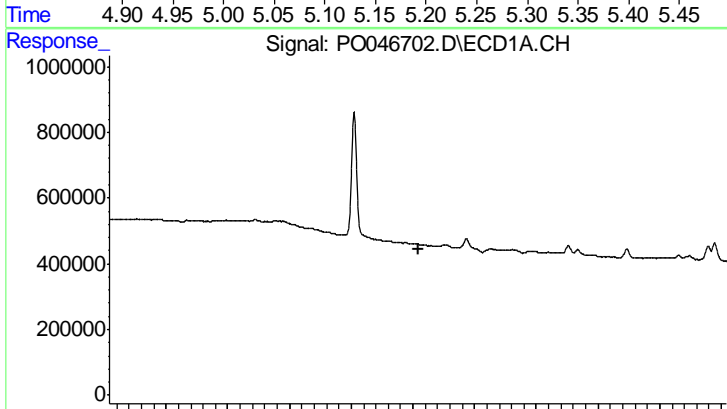
R.T.: 5.967 min  
 Delta R.T.: -0.005 min  
 Response: 275819  
 Conc: 42.41 ng/ml

Instrument :  
 ECD\_O  
 ClientSampleId :  
 PB111111BSD



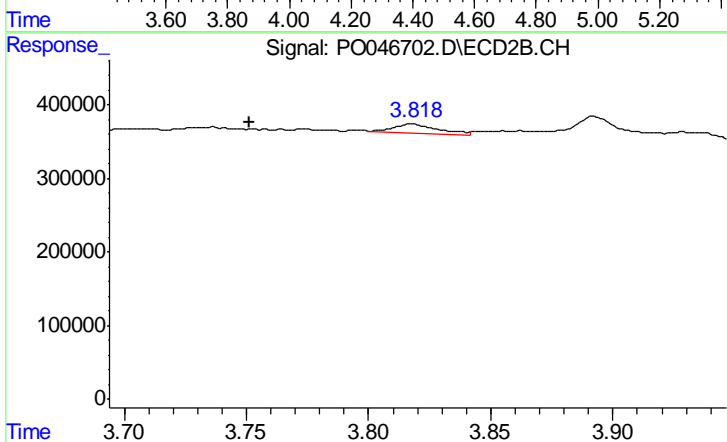
#7 AR-1016-5

R.T.: 5.182 min  
 Delta R.T.: -0.019 min  
 Response: 343517  
 Conc: 62.34 ng/ml



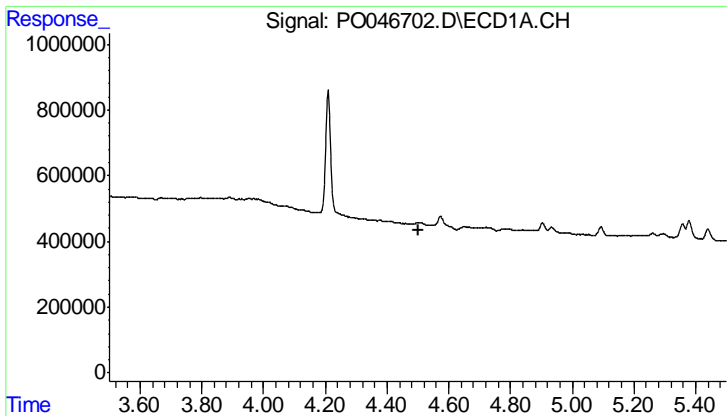
#8 AR-1221-1

R.T.: 0.000 min  
 Exp R.T. : 4.416 min  
 Response: 0  
 Conc: N.D.



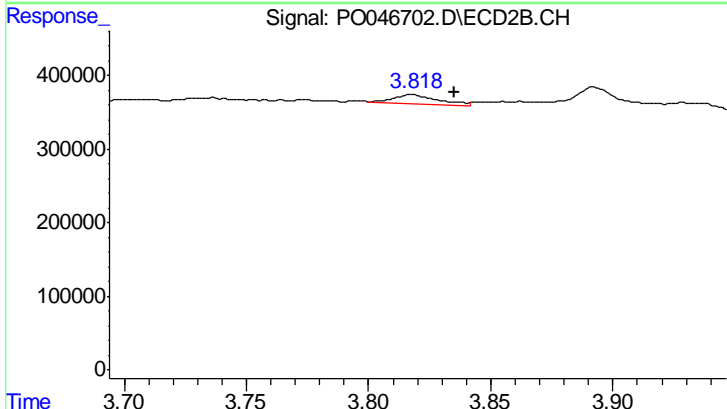
#8 AR-1221-1

R.T.: 3.818 min  
 Delta R.T.: 0.066 min  
 Response: 144807  
 Conc: 54.15 ng/ml

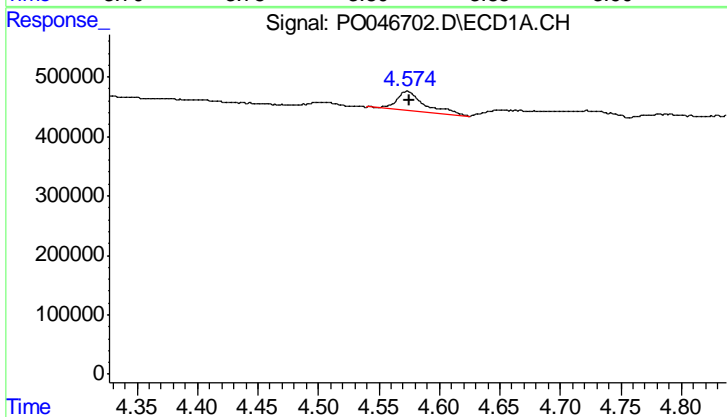


#9 AR-1221-2  
 R.T.: 0.000 min  
 Exp R.T.: 4.500 min  
 Response: 0  
 Conc: N.D.

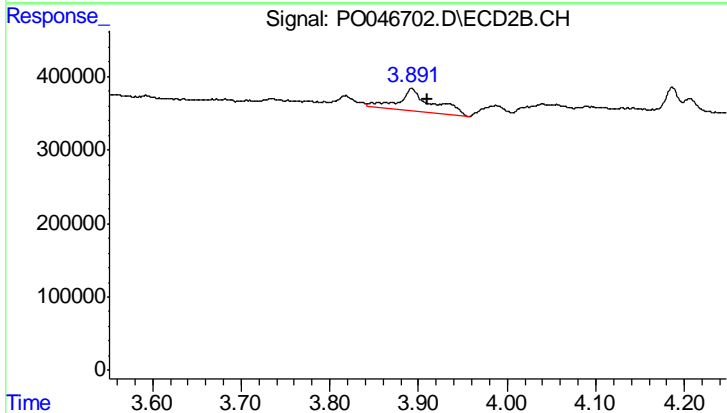
Instrument :  
 ECD\_O  
 ClientSampleId :  
 PB111111BSD



#9 AR-1221-2  
 R.T.: 3.818 min  
 Delta R.T.: -0.018 min  
 Response: 144807  
 Conc: 67.17 ng/ml

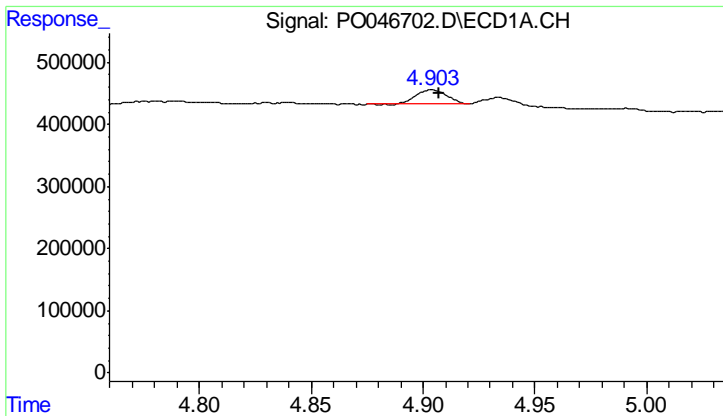


#10 AR-1221-3  
 R.T.: 4.573 min  
 Delta R.T.: -0.002 min  
 Response: 534036  
 Conc: 70.65 ng/ml



#10 AR-1221-3  
 R.T.: 3.893 min  
 Delta R.T.: -0.018 min  
 Response: 807492  
 Conc: 117.87 ng/ml

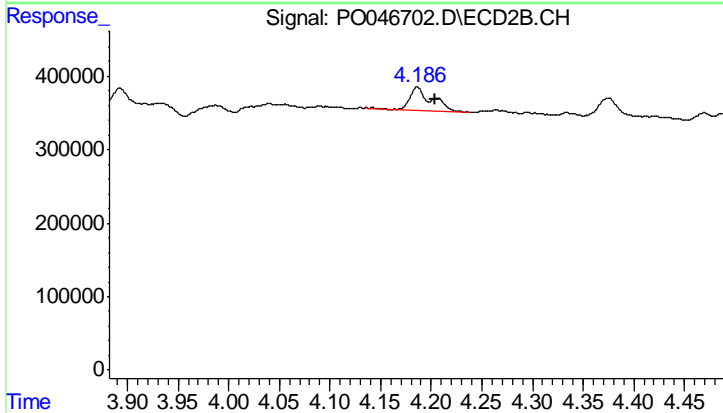




#11 AR-1232-1

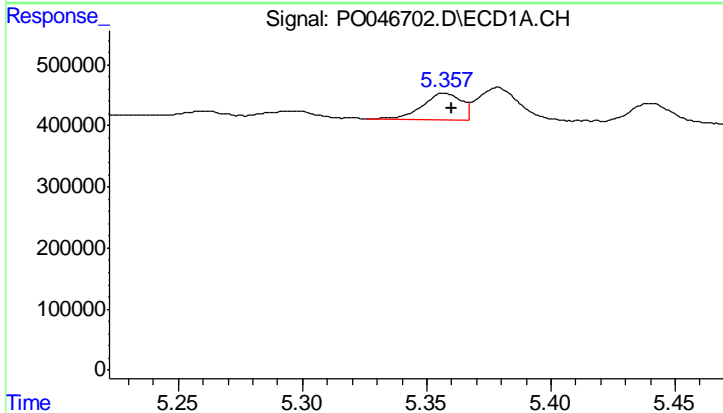
R.T.: 4.904 min  
 Delta R.T.: -0.003 min  
 Response: 219745  
 Conc: 89.90 ng/ml

Instrument :  
 ECD\_O  
 ClientSampleId :  
 PB111111BSD



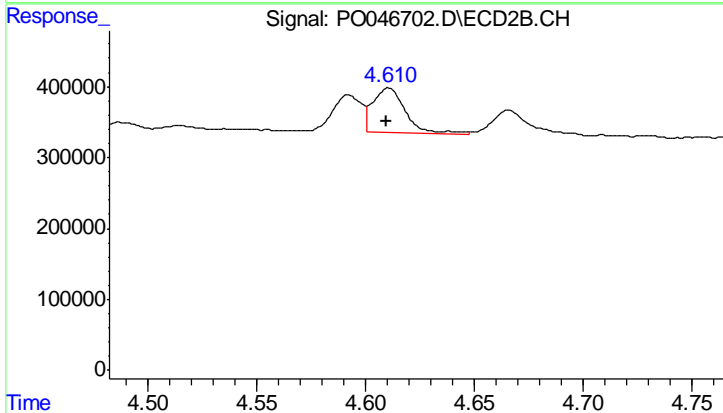
#11 AR-1232-1

R.T.: 4.186 min  
 Delta R.T.: -0.017 min  
 Response: 475405  
 Conc: 204.81 ng/ml



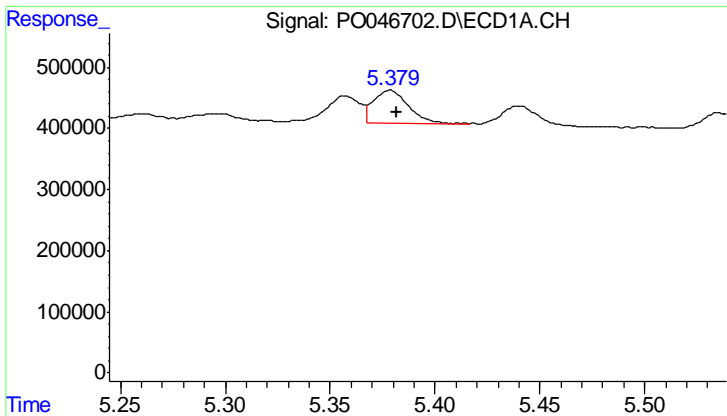
#12 AR-1232-2

R.T.: 5.357 min  
 Delta R.T.: -0.003 min  
 Response: 475952  
 Conc: 134.45 ng/ml



#12 AR-1232-2

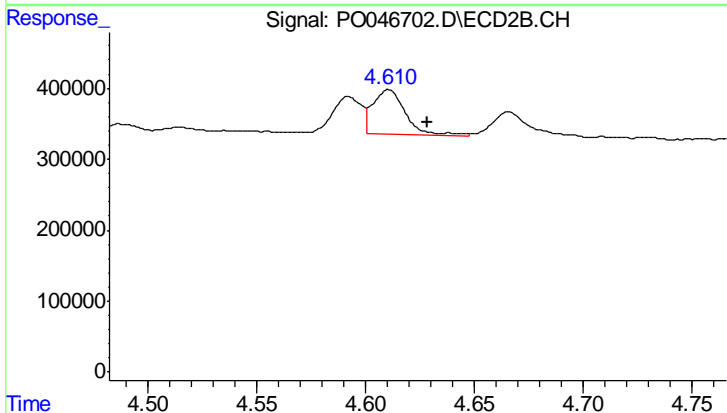
R.T.: 4.610 min  
 Delta R.T.: 0.000 min  
 Response: 658094  
 Conc: 191.04 ng/ml



#13 AR-1232-3

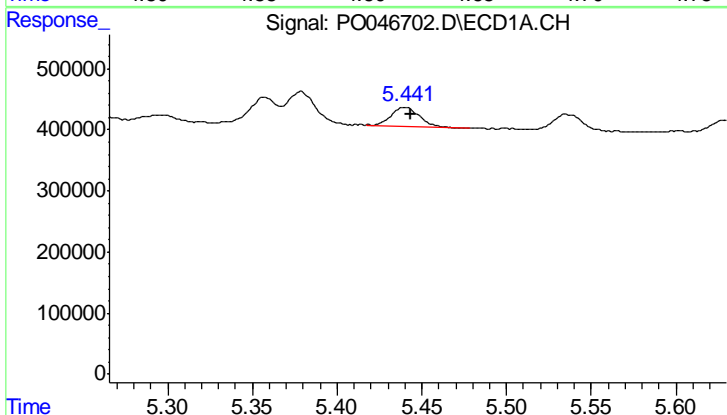
R.T.: 5.379 min  
 Delta R.T.: -0.003 min  
 Response: 616098  
 Conc: 121.38 ng/ml

Instrument :  
 ECD\_O  
 ClientSampleId :  
 PB111111BSD



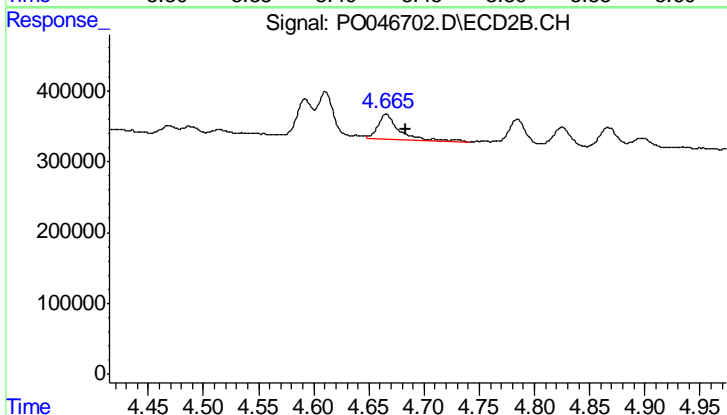
#13 AR-1232-3

R.T.: 4.610 min  
 Delta R.T.: -0.018 min  
 Response: 658094  
 Conc: 137.95 ng/ml



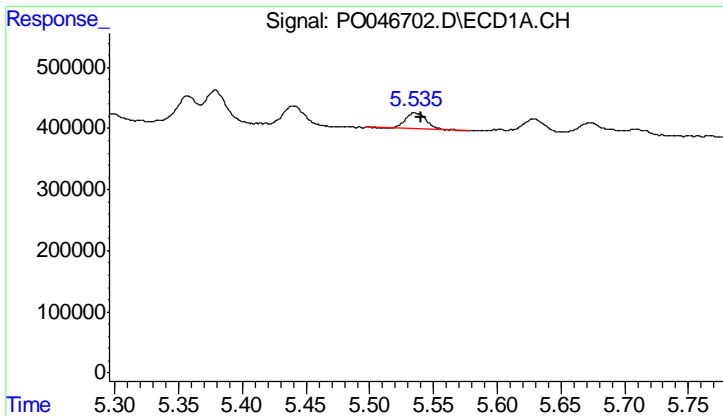
#14 AR-1232-4

R.T.: 5.440 min  
 Delta R.T.: -0.003 min  
 Response: 365312  
 Conc: 112.11 ng/ml



#14 AR-1232-4

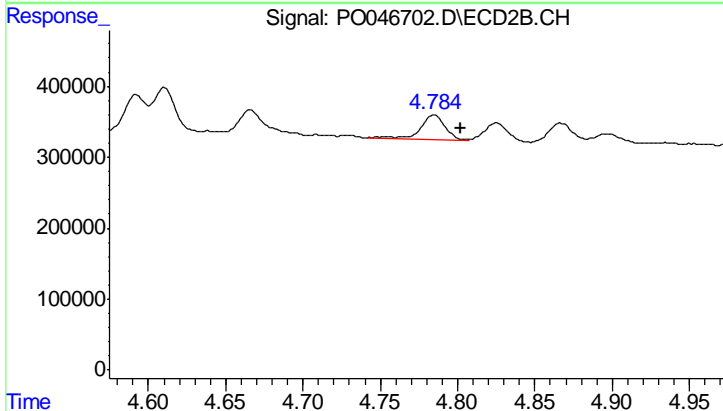
R.T.: 4.666 min  
 Delta R.T.: -0.018 min  
 Response: 471907  
 Conc: 134.28 ng/ml



#15 AR-1232-5

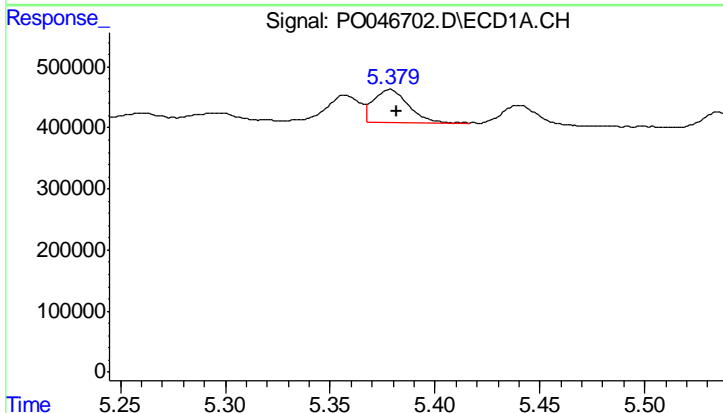
R.T.: 5.535 min  
 Delta R.T.: -0.004 min  
 Response: 306295  
 Conc: 115.35 ng/ml

Instrument :  
 ECD\_O  
 ClientSampleId :  
 PB111111BSD



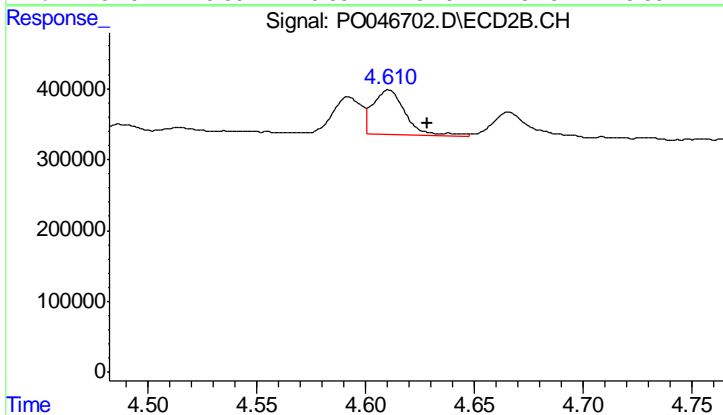
#15 AR-1232-5

R.T.: 4.784 min  
 Delta R.T.: -0.018 min  
 Response: 394469  
 Conc: 141.62 ng/ml



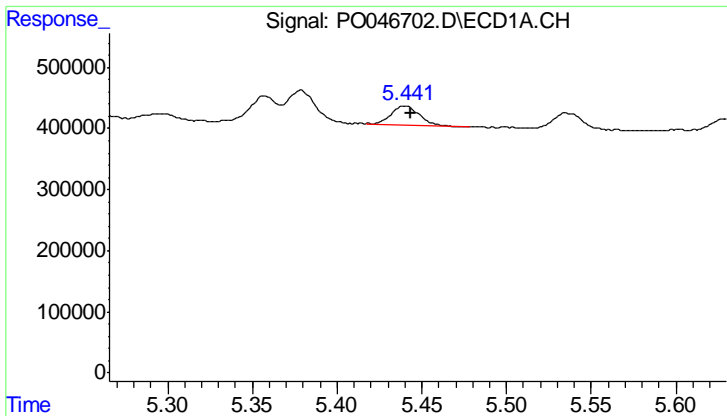
#16 AR-1242-1

R.T.: 5.379 min  
 Delta R.T.: -0.003 min  
 Response: 616098  
 Conc: 60.59 ng/ml



#16 AR-1242-1

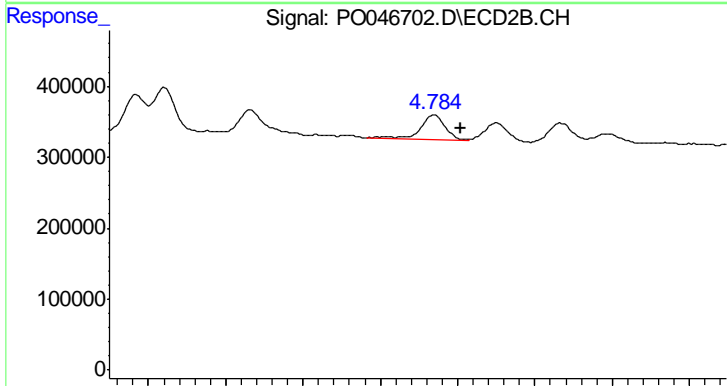
R.T.: 4.610 min  
 Delta R.T.: -0.018 min  
 Response: 658094  
 Conc: 68.70 ng/ml



#17 AR-1242-2

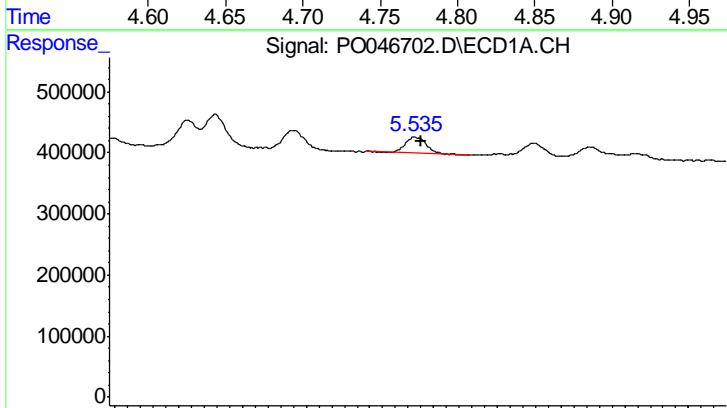
R.T.: 5.440 min  
 Delta R.T.: -0.003 min  
 Response: 365312  
 Conc: 56.43 ng/ml

Instrument :  
 ECD\_O  
 ClientSampleId :  
 PB1111111BSD



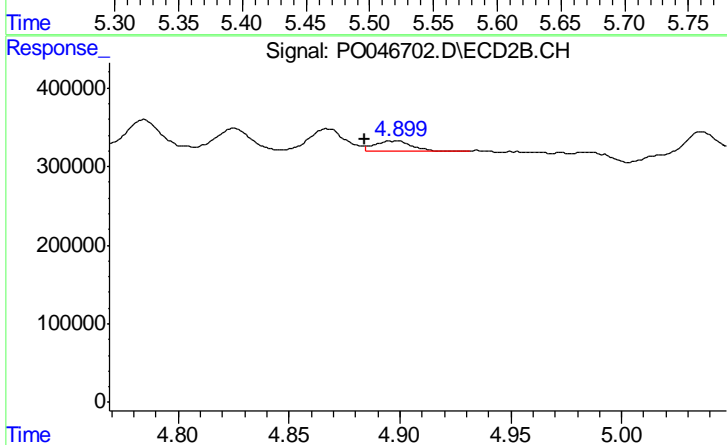
#17 AR-1242-2

R.T.: 4.784 min  
 Delta R.T.: -0.018 min  
 Response: 394469  
 Conc: 71.07 ng/ml



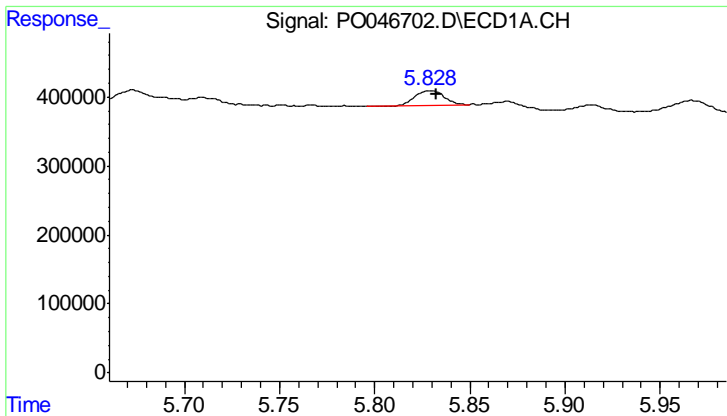
#18 AR-1242-3

R.T.: 5.535 min  
 Delta R.T.: -0.005 min  
 Response: 306295  
 Conc: 56.22 ng/ml



#18 AR-1242-3

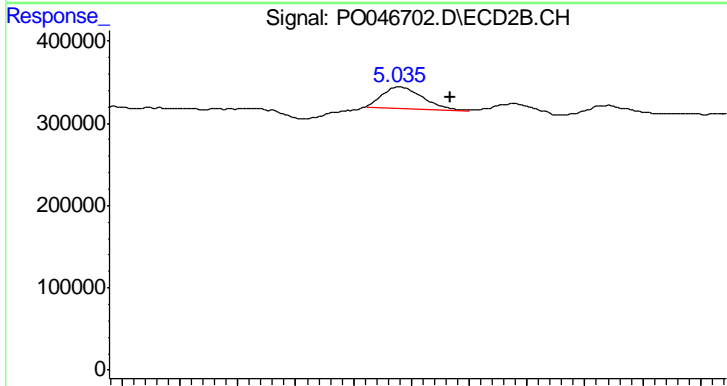
R.T.: 4.897 min  
 Delta R.T.: 0.013 min  
 Response: 130767  
 Conc: 25.18 ng/ml



#19 AR-1242-4

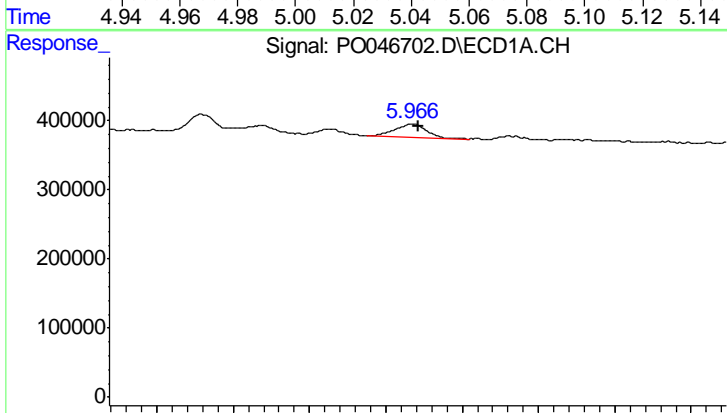
R.T.: 5.829 min  
 Delta R.T.: -0.003 min  
 Response: 220122  
 Conc: 41.20 ng/ml

Instrument :  
 ECD\_O  
 ClientSampleId :  
 PB1111111BSD



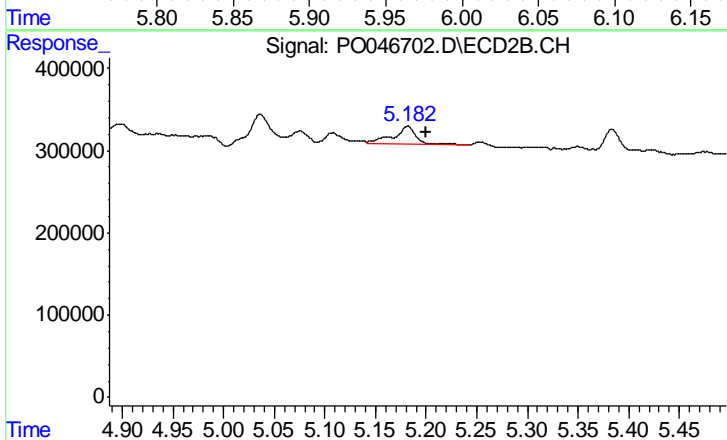
#19 AR-1242-4

R.T.: 5.036 min  
 Delta R.T.: -0.017 min  
 Response: 257919  
 Conc: 45.45 ng/ml



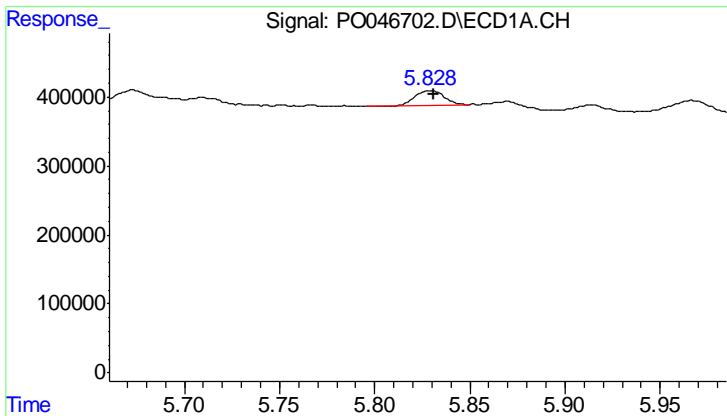
#20 AR-1242-5

R.T.: 5.967 min  
 Delta R.T.: -0.005 min  
 Response: 275819  
 Conc: 45.72 ng/ml



#20 AR-1242-5

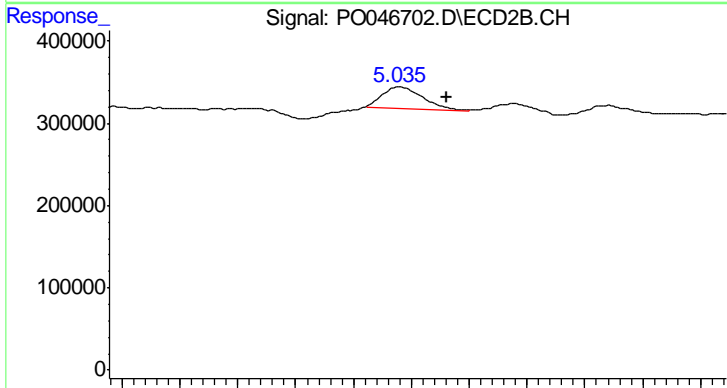
R.T.: 5.182 min  
 Delta R.T.: -0.019 min  
 Response: 343517  
 Conc: 66.31 ng/ml



#21 AR-1248-1

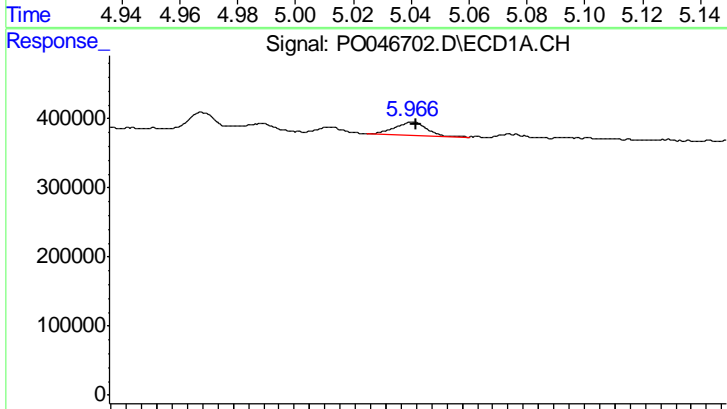
R.T.: 5.829 min  
 Delta R.T.: -0.002 min  
 Response: 220122  
 Conc: 27.74 ng/ml

Instrument :  
 ECD\_O  
 ClientSampleId :  
 PB111111BSD



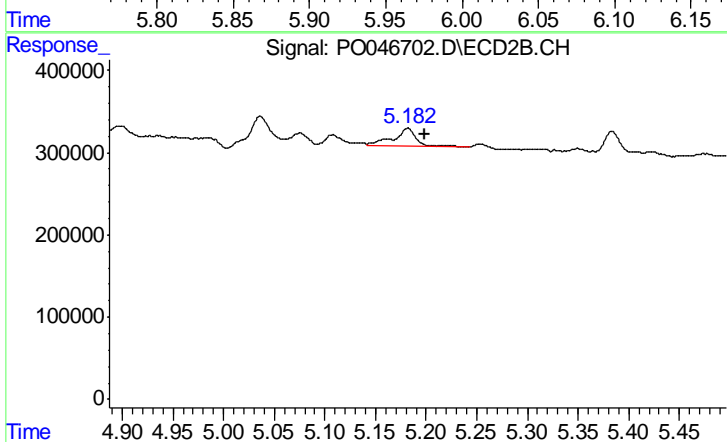
#21 AR-1248-1

R.T.: 5.036 min  
 Delta R.T.: -0.016 min  
 Response: 257919  
 Conc: 30.50 ng/ml



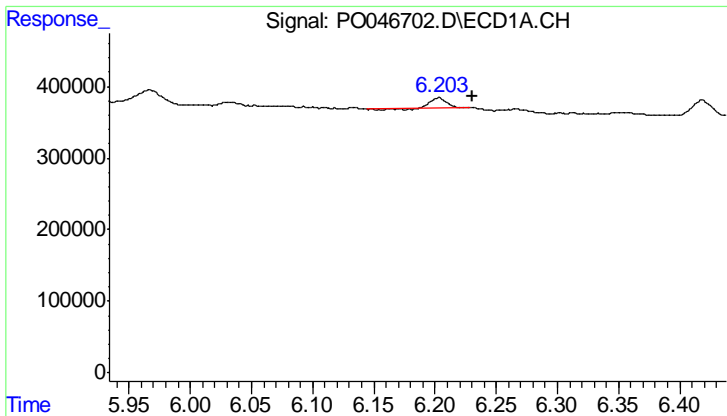
#22 AR-1248-2

R.T.: 5.967 min  
 Delta R.T.: -0.003 min  
 Response: 275819  
 Conc: 38.95 ng/ml



#22 AR-1248-2

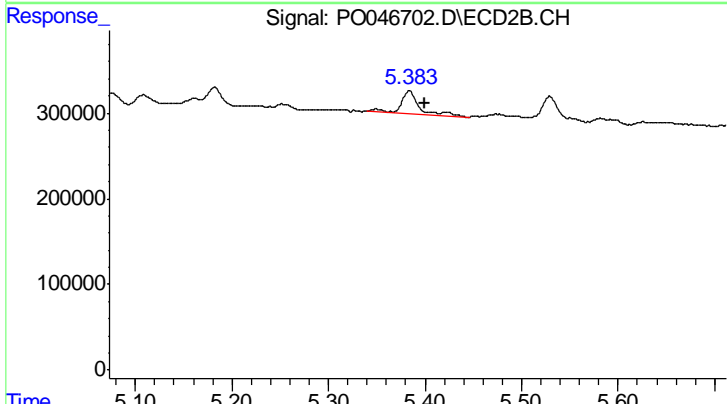
R.T.: 5.182 min  
 Delta R.T.: -0.017 min  
 Response: 343517  
 Conc: 53.82 ng/ml



#23 AR-1248-3

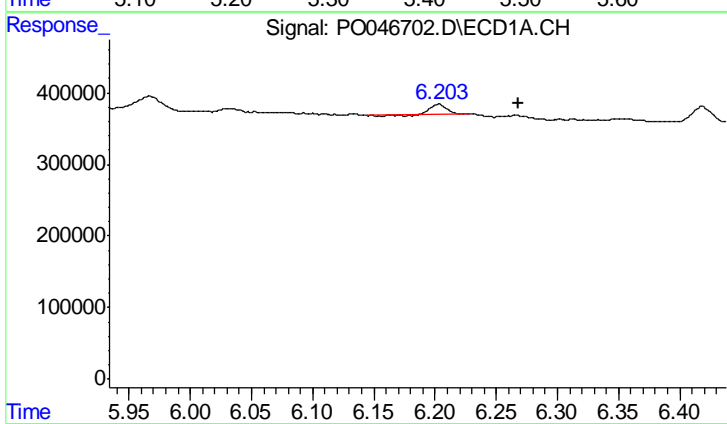
R.T.: 6.203 min  
 Delta R.T.: -0.027 min  
 Response: 123813  
 Conc: 13.51 ng/ml

Instrument :  
 ECD\_O  
 ClientSampleId :  
 PB111111BSD



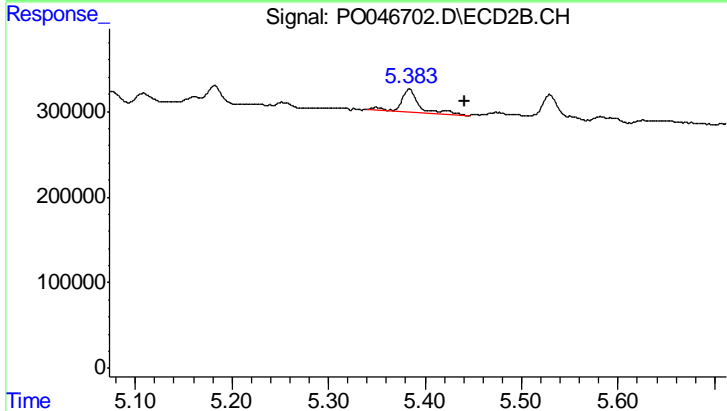
#23 AR-1248-3

R.T.: 5.384 min  
 Delta R.T.: -0.016 min  
 Response: 330737  
 Conc: 26.88 ng/ml



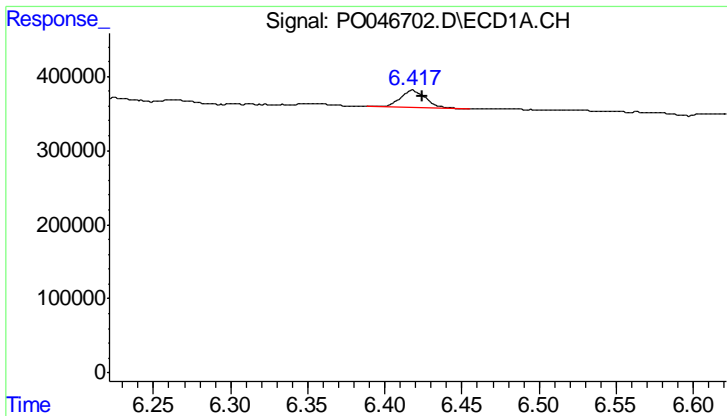
#24 AR-1248-4

R.T.: 6.203 min  
 Delta R.T.: -0.065 min  
 Response: 123813  
 Conc: 13.96 ng/ml



#24 AR-1248-4

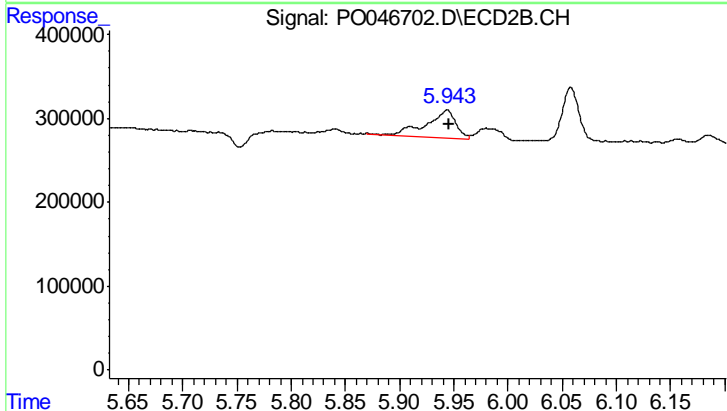
R.T.: 5.384 min  
 Delta R.T.: -0.057 min  
 Response: 330737  
 Conc: 37.99 ng/ml



#25 AR-1248-5

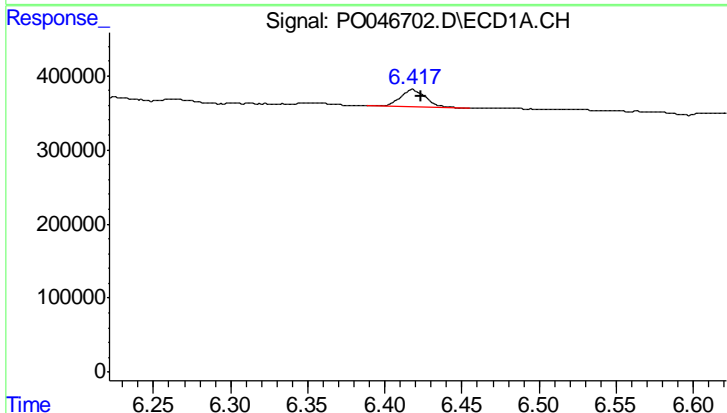
R.T.: 6.418 min  
 Delta R.T.: -0.006 min  
 Response: 269801  
 Conc: 29.65 ng/ml

Instrument :  
 ECD\_O  
 ClientSampleId :  
 PB111111BSD



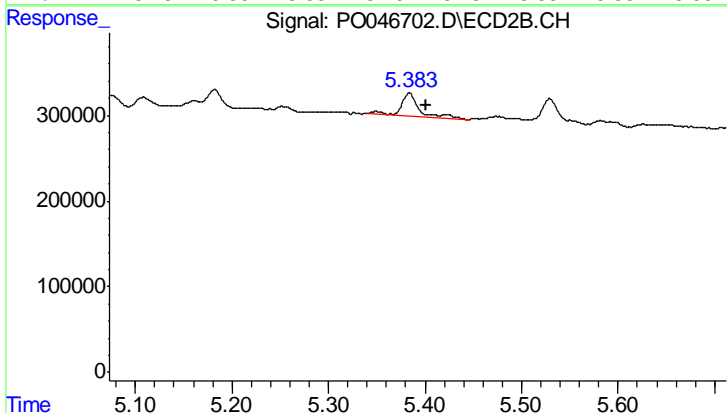
#25 AR-1248-5

R.T.: 5.944 min  
 Delta R.T.: -0.003 min  
 Response: 620547  
 Conc: 105.99 ng/ml



#26 AR-1254-1

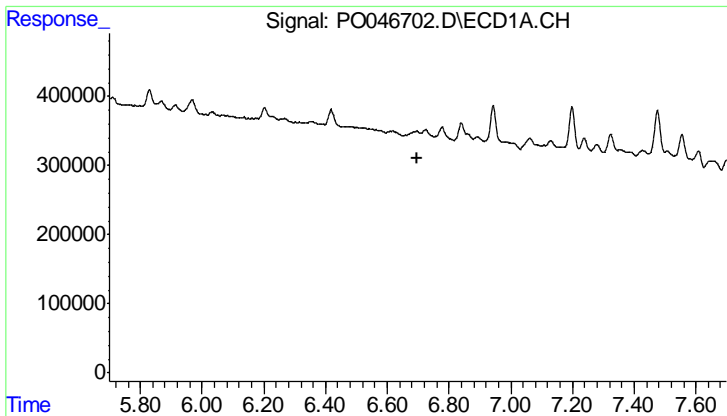
R.T.: 6.418 min  
 Delta R.T.: -0.005 min  
 Response: 269801  
 Conc: 19.35 ng/ml



#26 AR-1254-1

R.T.: 5.384 min  
 Delta R.T.: -0.018 min  
 Response: 330737  
 Conc: 24.74 ng/ml

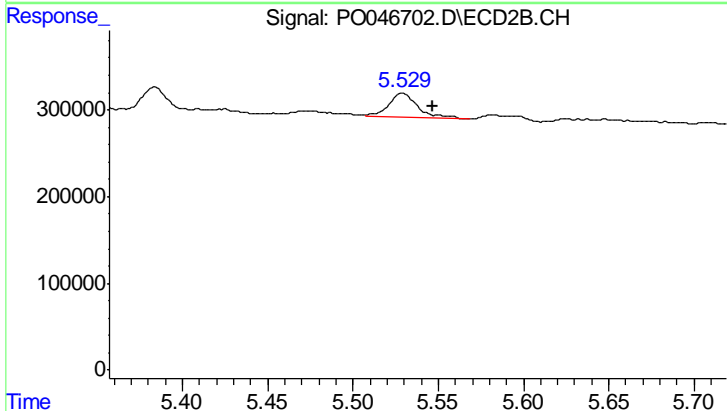




#27 AR-1254-2

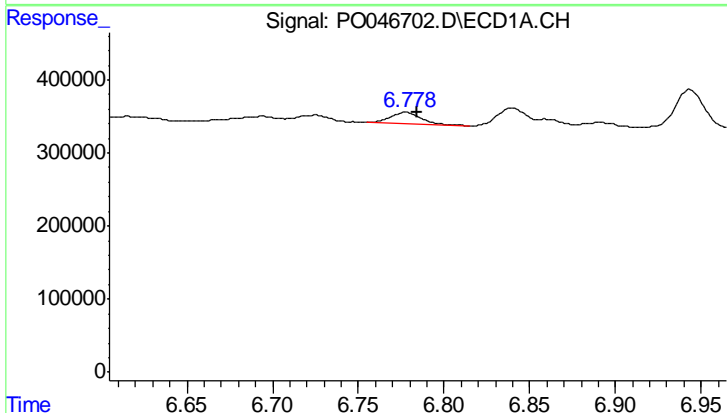
R.T.: 0.000 min  
 Exp R.T.: 6.699 min  
 Response: 0  
 Conc: N.D.

Instrument :  
 ECD\_O  
 ClientSampleId :  
 PB111111BSD



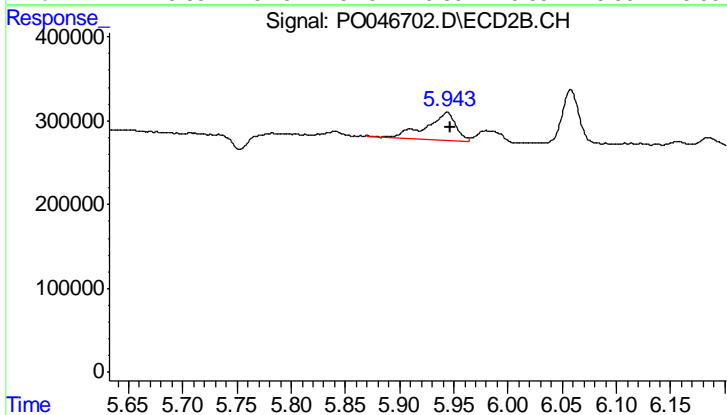
#27 AR-1254-2

R.T.: 5.529 min  
 Delta R.T.: -0.018 min  
 Response: 342055  
 Conc: 29.59 ng/ml



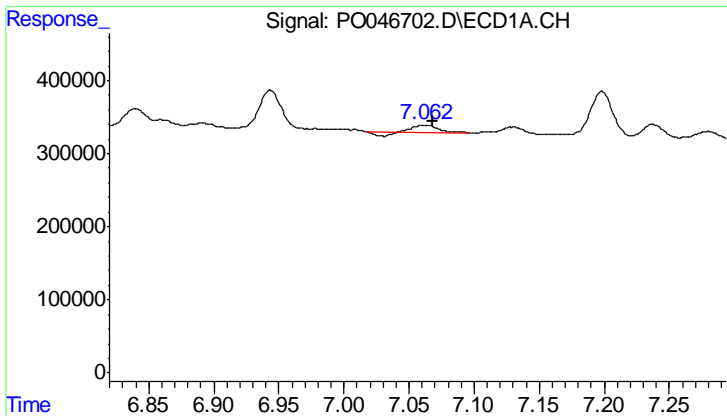
#28 AR-1254-3

R.T.: 6.778 min  
 Delta R.T.: -0.006 min  
 Response: 212175  
 Conc: 13.88 ng/ml



#28 AR-1254-3

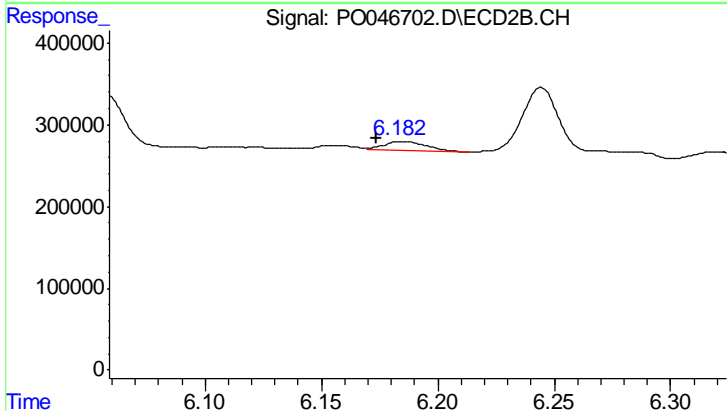
R.T.: 5.944 min  
 Delta R.T.: -0.004 min  
 Response: 620547  
 Conc: 31.53 ng/ml



#29 AR-1254-4

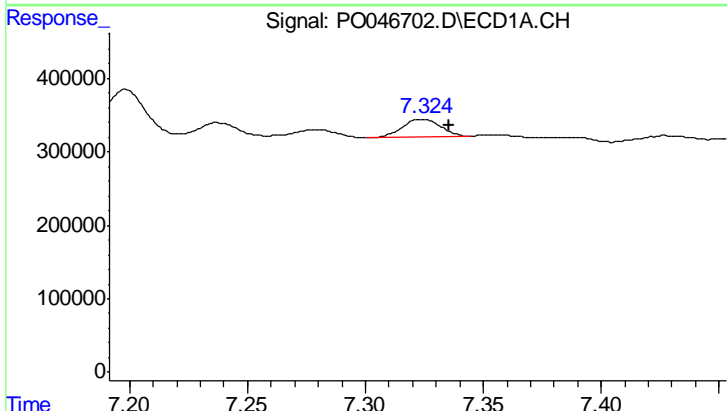
R.T.: 7.062 min  
 Delta R.T.: -0.005 min  
 Response: 114103  
 Conc: 9.94 ng/ml

Instrument :  
 ECD\_O  
 ClientSampleId :  
 PB111111BSD



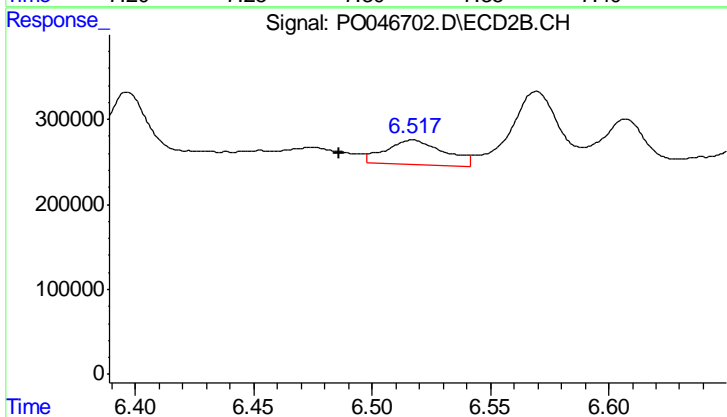
#29 AR-1254-4

R.T.: 6.185 min  
 Delta R.T.: 0.011 min  
 Response: 138447  
 Conc: 10.98 ng/ml



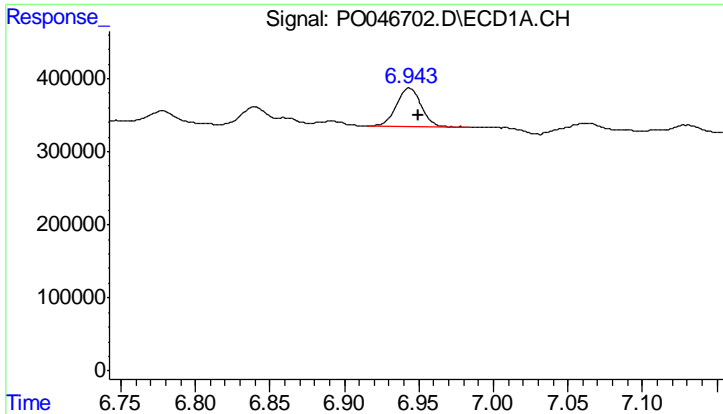
#30 AR-1254-5

R.T.: 7.324 min  
 Delta R.T.: -0.012 min  
 Response: 276257  
 Conc: 31.13 ng/ml



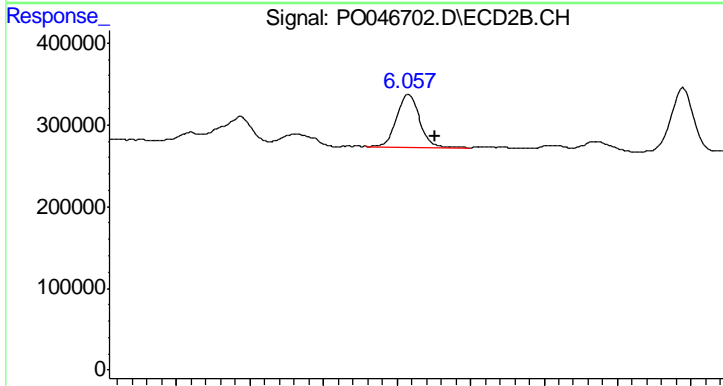
#30 AR-1254-5

R.T.: 6.517 min  
 Delta R.T.: 0.031 min  
 Response: 486155  
 Conc: 53.60 ng/ml

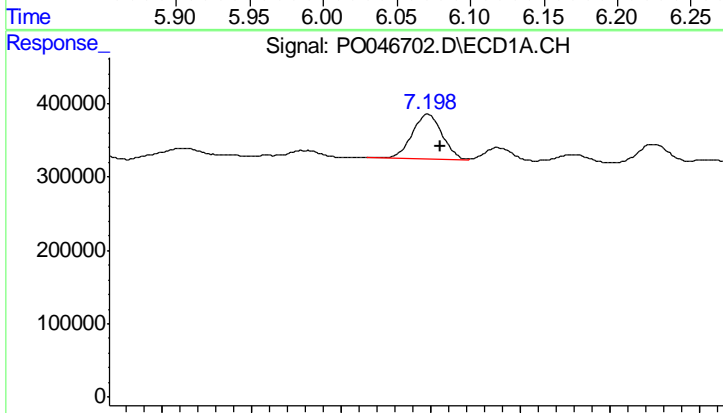


#31 AR-1260-1  
 R.T.: 6.943 min  
 Delta R.T.: -0.006 min  
 Response: 618612  
 Conc: 53.86 ng/ml

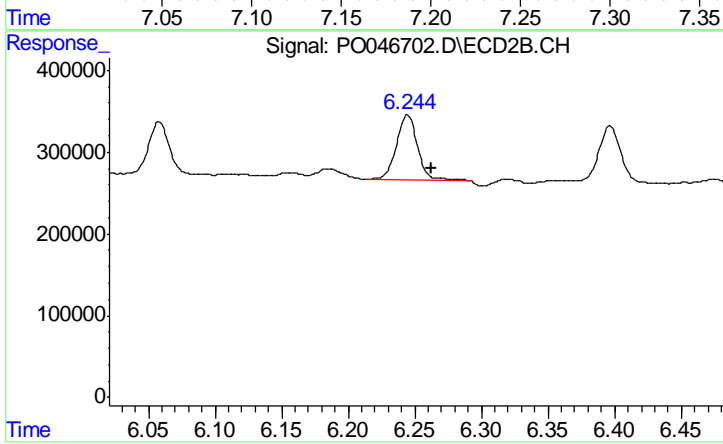
Instrument :  
 ECD\_O  
 ClientSampleId :  
 PB111111BSD



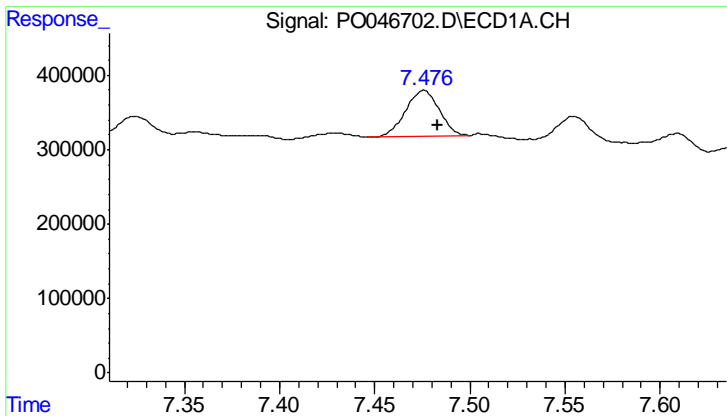
#31 AR-1260-1  
 R.T.: 6.058 min  
 Delta R.T.: -0.018 min  
 Response: 693421  
 Conc: 53.16 ng/ml



#32 AR-1260-2  
 R.T.: 7.198 min  
 Delta R.T.: -0.007 min  
 Response: 705021  
 Conc: 52.23 ng/ml



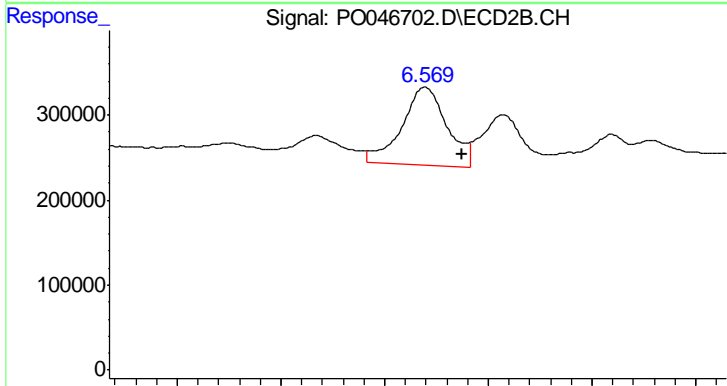
#32 AR-1260-2  
 R.T.: 6.244 min  
 Delta R.T.: -0.018 min  
 Response: 863209  
 Conc: 54.14 ng/ml



#33 AR-1260-3

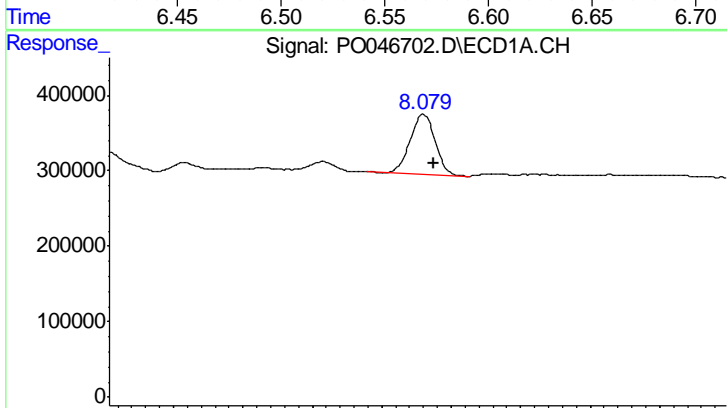
R.T.: 7.476 min  
 Delta R.T.: -0.007 min  
 Response: 759228  
 Conc: 46.93 ng/ml

Instrument :  
 ECD\_O  
 ClientSampleId :  
 PB1111111BSD



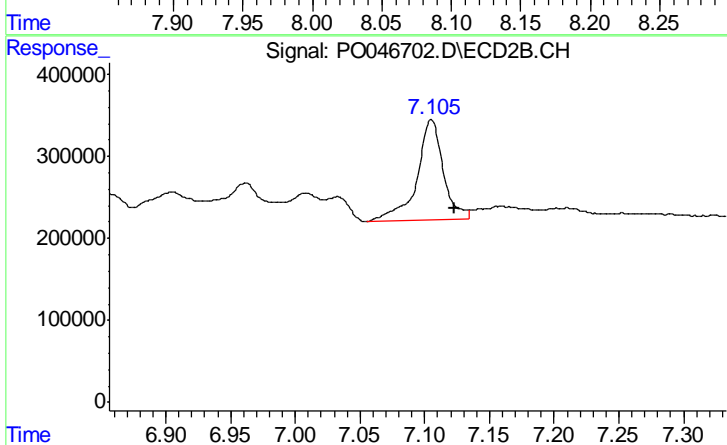
#33 AR-1260-3

R.T.: 6.570 min  
 Delta R.T.: -0.018 min  
 Response: 1392060  
 Conc: 77.63 ng/ml



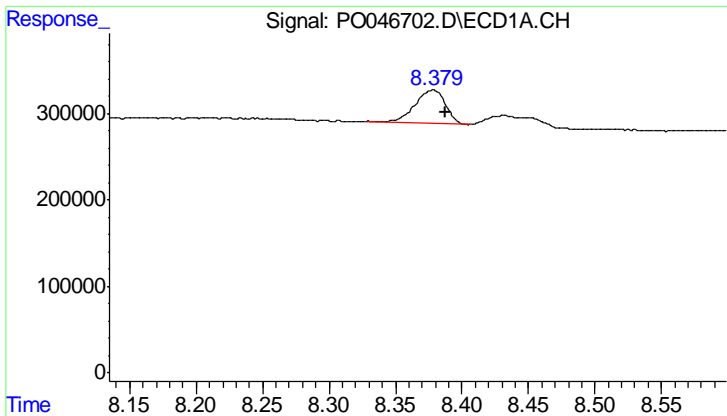
#34 AR-1260-4

R.T.: 8.080 min  
 Delta R.T.: -0.008 min  
 Response: 1000539  
 Conc: 47.59 ng/ml



#34 AR-1260-4

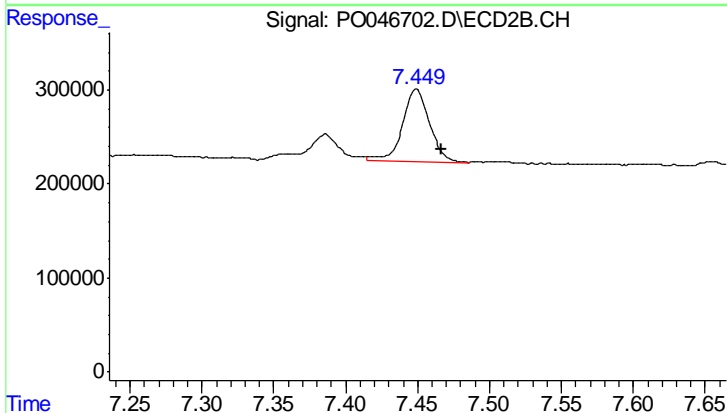
R.T.: 7.105 min  
 Delta R.T.: -0.017 min  
 Response: 1730169  
 Conc: 62.28 ng/ml



#35 AR-1260-5

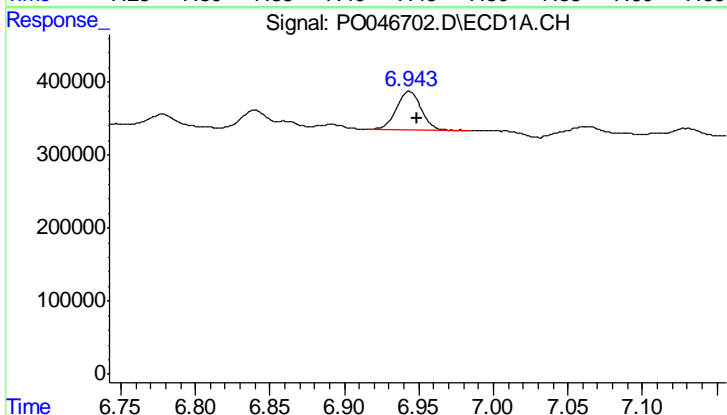
R.T.: 8.379 min  
Delta R.T.: -0.009 min  
Response: 616408  
Conc: 45.70 ng/ml

Instrument :  
ECD\_O  
ClientSampleId :  
PB111111BSD



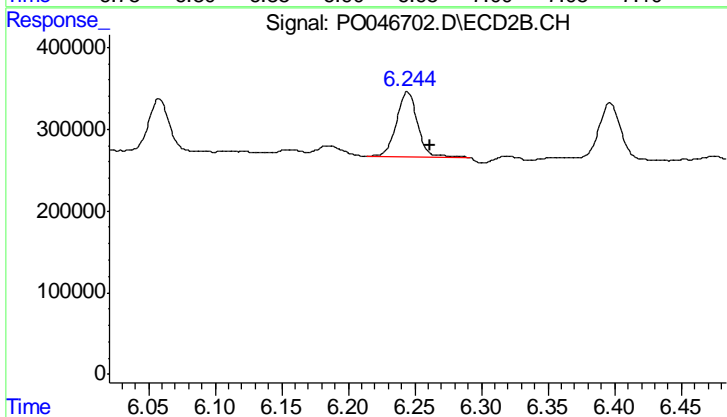
#35 AR-1260-5

R.T.: 7.449 min  
Delta R.T.: -0.017 min  
Response: 1005114  
Conc: 52.32 ng/ml



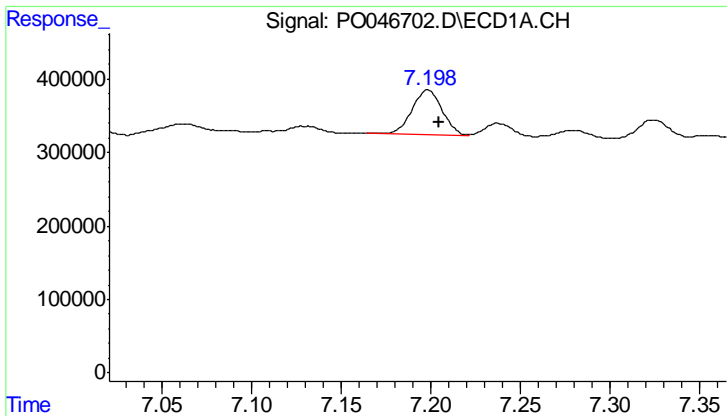
#36 AR-1262-1

R.T.: 6.943 min  
Delta R.T.: -0.006 min  
Response: 618612  
Conc: 64.94 ng/ml



#36 AR-1262-1

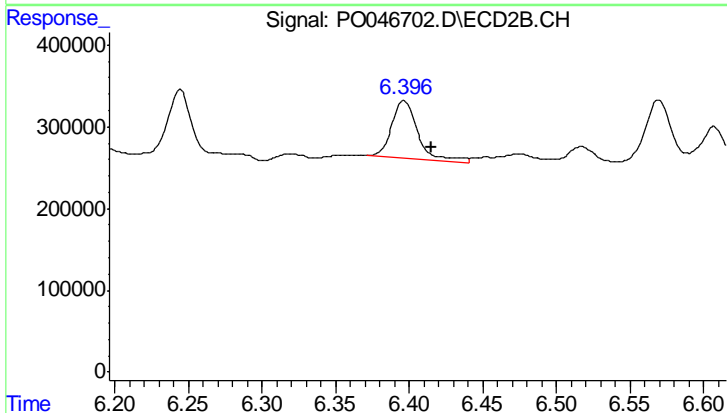
R.T.: 6.244 min  
Delta R.T.: -0.017 min  
Response: 863209  
Conc: 65.91 ng/ml



#37 AR-1262-2

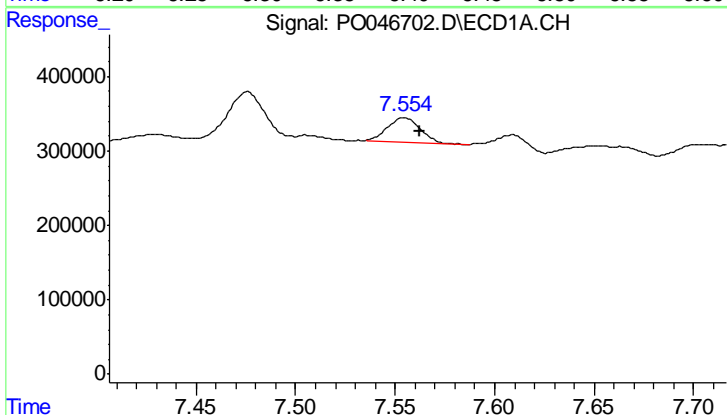
R.T.: 7.198 min  
 Delta R.T.: -0.006 min  
 Response: 705021  
 Conc: 63.30 ng/ml

Instrument :  
 ECD\_O  
 ClientSampleId :  
 PB111111BSD



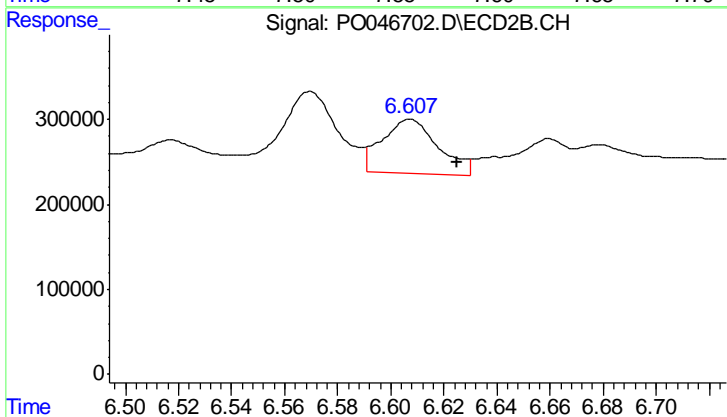
#37 AR-1262-2

R.T.: 6.397 min  
 Delta R.T.: -0.019 min  
 Response: 861561  
 Conc: 66.51 ng/ml



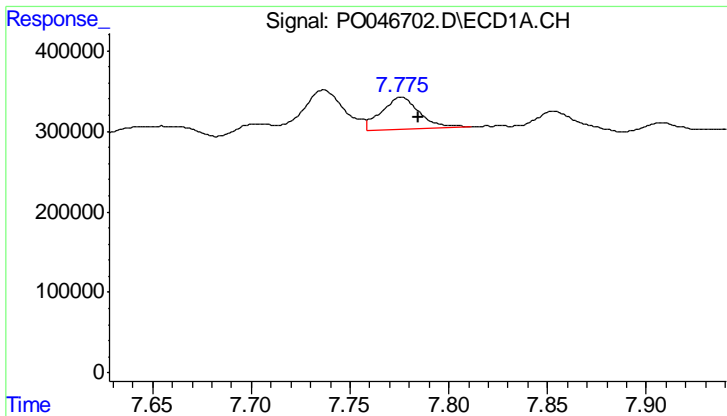
#38 AR-1262-3

R.T.: 7.554 min  
 Delta R.T.: -0.008 min  
 Response: 381431  
 Conc: 26.64 ng/ml



#38 AR-1262-3

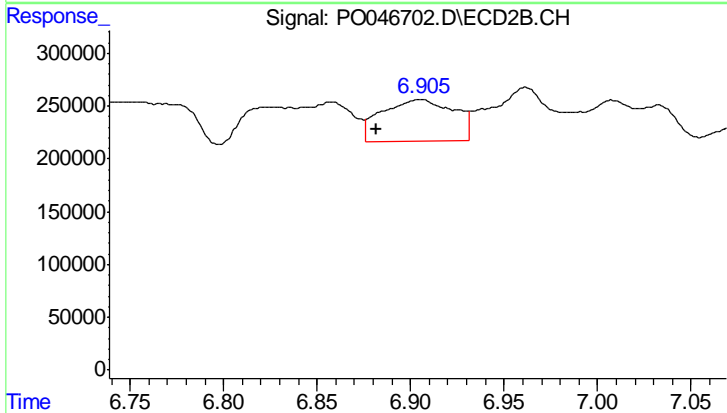
R.T.: 6.607 min  
 Delta R.T.: -0.018 min  
 Response: 937422  
 Conc: 53.53 ng/ml



#39 AR-1262-4

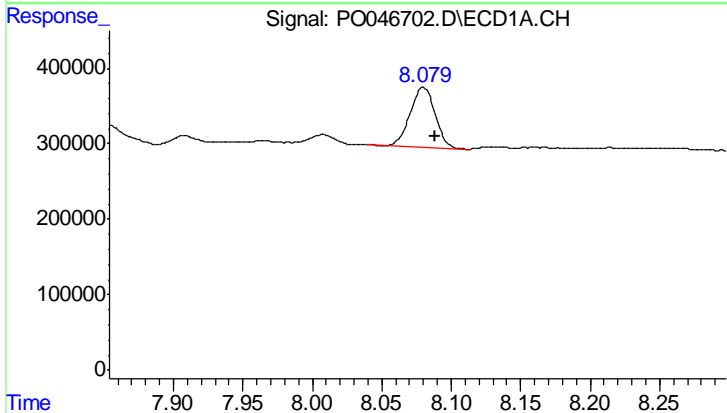
R.T.: 7.776 min  
 Delta R.T.: -0.008 min  
 Response: 528473  
 Conc: 39.31 ng/ml

Instrument :  
 ECD\_O  
 ClientSampleId :  
 PB111111BSD



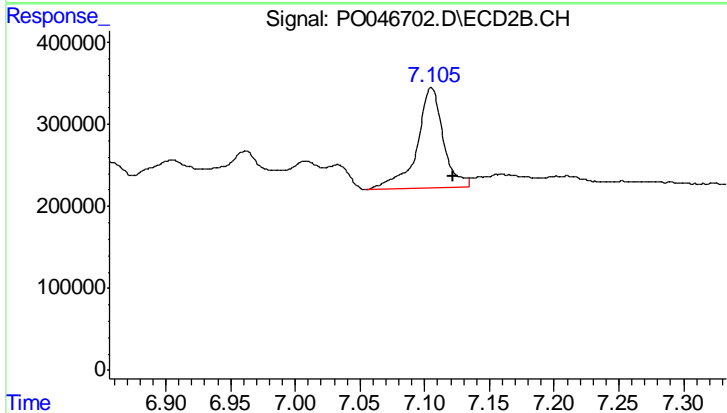
#39 AR-1262-4

R.T.: 6.905 min  
 Delta R.T.: 0.023 min  
 Response: 1071316  
 Conc: 70.08 ng/ml



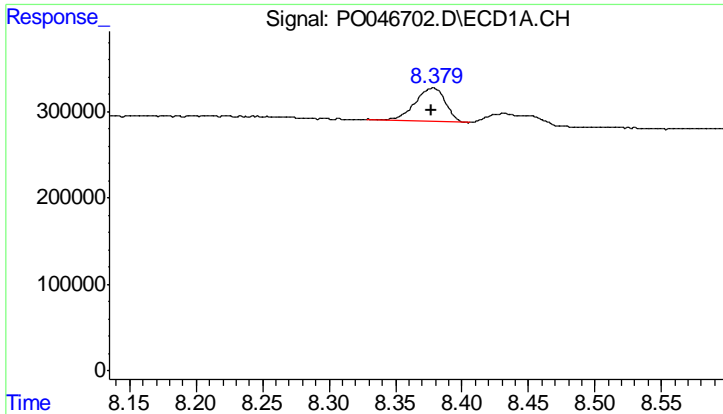
#40 AR-1262-5

R.T.: 8.080 min  
 Delta R.T.: -0.008 min  
 Response: 1000539  
 Conc: 41.34 ng/ml



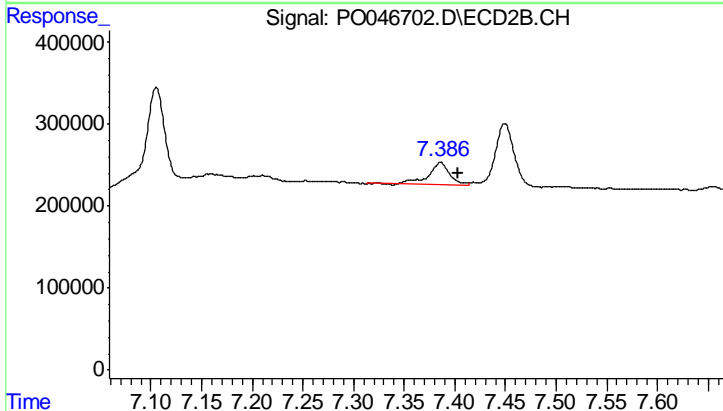
#40 AR-1262-5

R.T.: 7.105 min  
 Delta R.T.: -0.017 min  
 Response: 1730169  
 Conc: 56.05 ng/ml

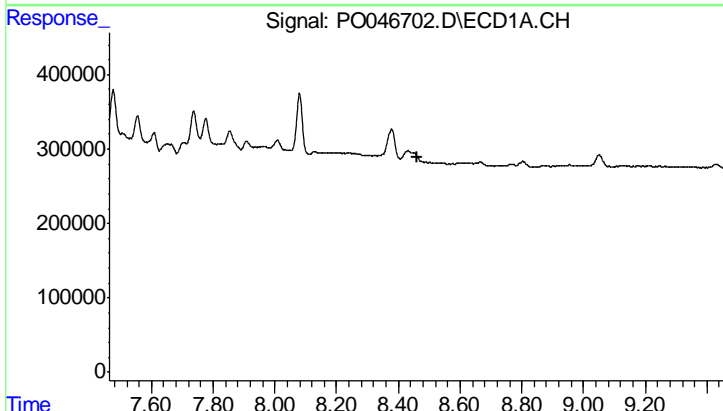


#41 AR-1268-1  
 R.T.: 8.379 min  
 Delta R.T.: 0.001 min  
 Response: 616408  
 Conc: 25.29 ng/ml

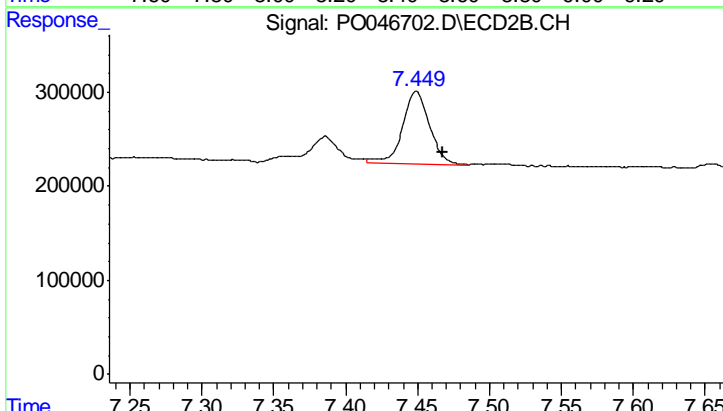
Instrument :  
 ECD\_O  
 ClientSampleId :  
 PB111111BSD



#41 AR-1268-1  
 R.T.: 7.386 min  
 Delta R.T.: -0.018 min  
 Response: 417961  
 Conc: 14.94 ng/ml

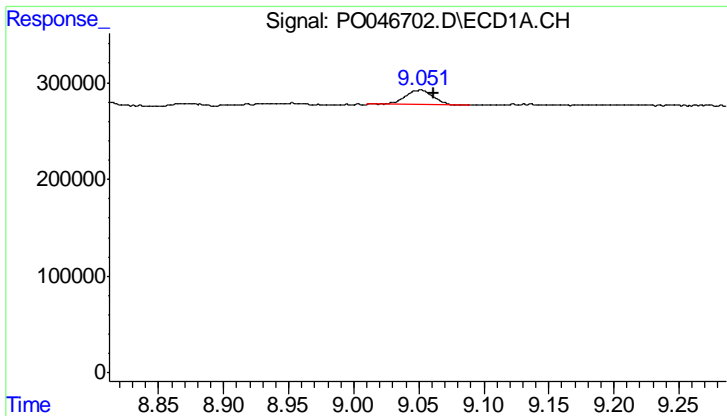


#42 AR-1268-2  
 R.T.: 0.000 min  
 Exp R.T. : 8.463 min  
 Response: 0  
 Conc: N.D.



#42 AR-1268-2  
 R.T.: 7.449 min  
 Delta R.T.: -0.018 min  
 Response: 1005114  
 Conc: 36.49 ng/ml

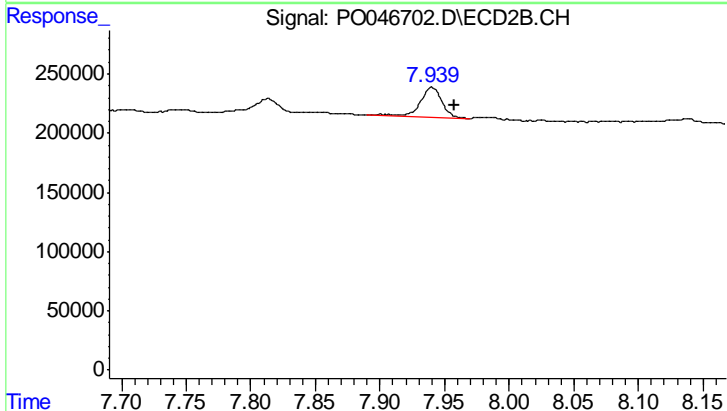




#44 AR-1268-4

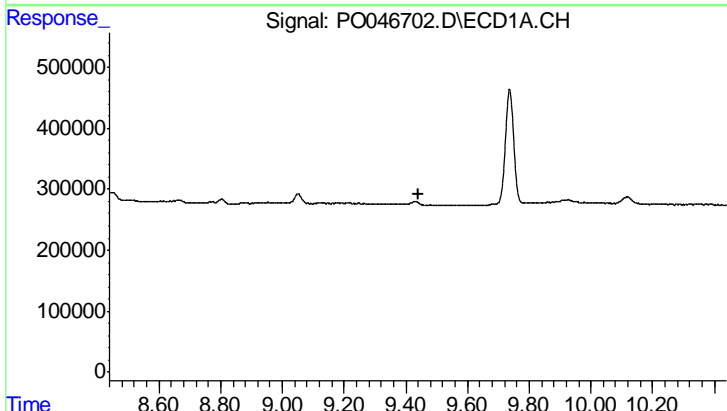
R.T.: 9.052 min  
 Delta R.T.: -0.010 min  
 Response: 235219  
 Conc: 27.73 ng/ml

Instrument :  
 ECD\_O  
 ClientSampleId :  
 PB111111BSD



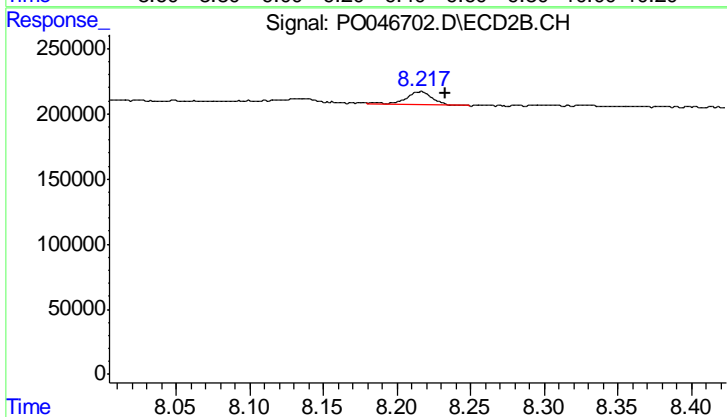
#44 AR-1268-4

R.T.: 7.940 min  
 Delta R.T.: -0.017 min  
 Response: 292465  
 Conc: 30.73 ng/ml



#45 AR-1268-5

R.T.: 0.000 min  
 Exp R.T. : 9.440 min  
 Response: 0  
 Conc: N.D.



#45 AR-1268-5

R.T.: 8.216 min  
 Delta R.T.: -0.017 min  
 Response: 124258  
 Conc: 1.97 ng/ml