

Data Path : Z:\pestpcbsrv\HPCHEM1\ECD_0\Data\P0071419\
 Data File : P0057939.D
 Signal(s) : Signal #1: ECD1A.CH Signal #2: ECD2B.CH
 Acq On : 13 Jul 2019 11:44
 Operator : SM/AJ
 Sample : I.BLK
 Misc :
 ALS Vial : 2 Sample Multiplier: 1

Instrument :
 ECD_0
 ClientSampleId :
 I.BLK

Integration File signal 1: autoint1.e
 Integration File signal 2: autoint2.e
 Quant Time: Jul 15 02:19:13 2019
 Quant Method : Z:\pestpcbsrv\HPCHEM1\ECD_0\methods\P0062419.M
 Quant Title : GC EXTRACTABLES
 QLast Update : Mon Jun 24 14:02:43 2019
 Response via : Initial Calibration
 Integrator: ChemStation 6890 Scale Mode: Small noise peaks clipped

Volume Inj. : 2 µl
 Signal #1 Phase : ZB-MR1 Signal #2 Phase: ZB-MR2
 Signal #1 Info : 30Mx0.32mmx 0.50µ Signal #2 Info : 30M x 0.32mm x 0.25µm

Compound	RT#1	RT#2	Resp#1	Resp#2	ng/ml	ng/ml
----------	------	------	--------	--------	-------	-------

 System Monitoring Compounds

1) SA Tetrachlo...	4.204	3.542	779824	672317	19.852	19.120
2) SA Decachlor...	9.726	8.449	916801	642241	16.304	17.169

Target Compounds

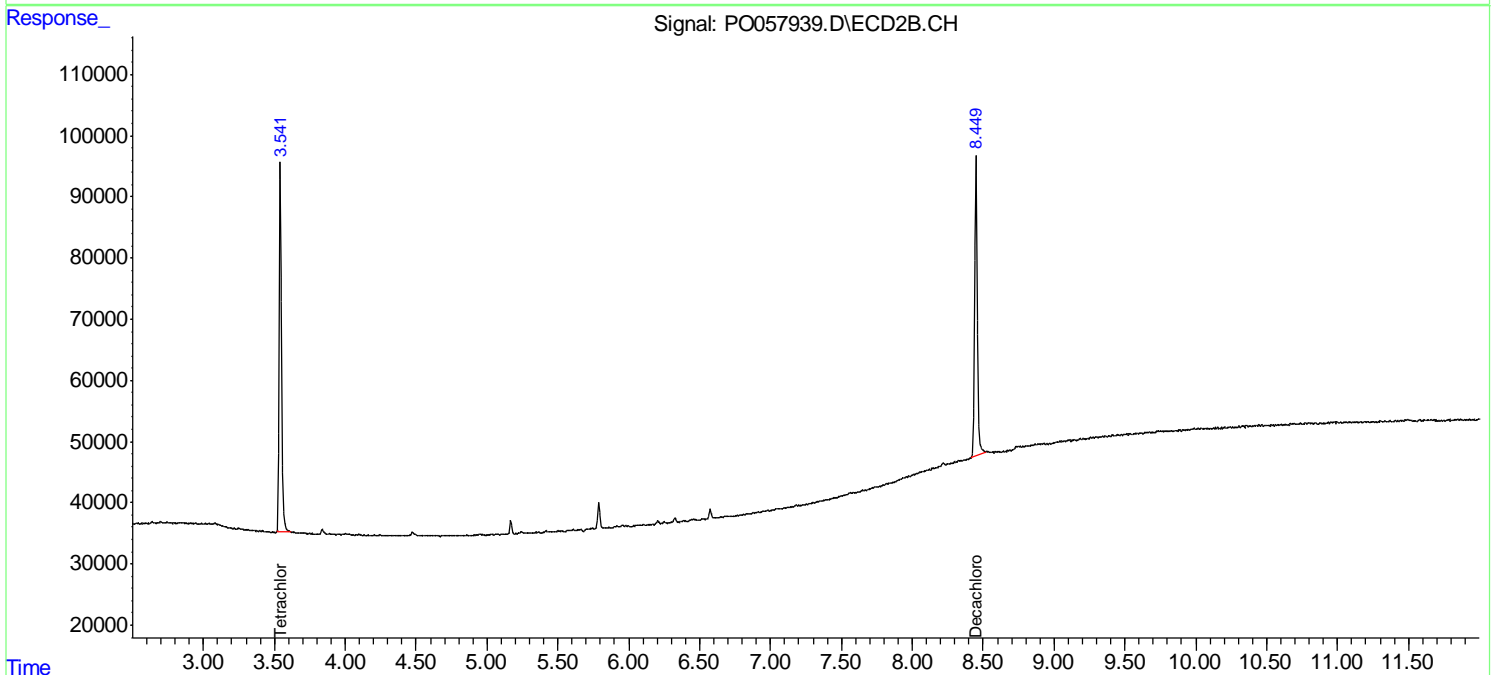
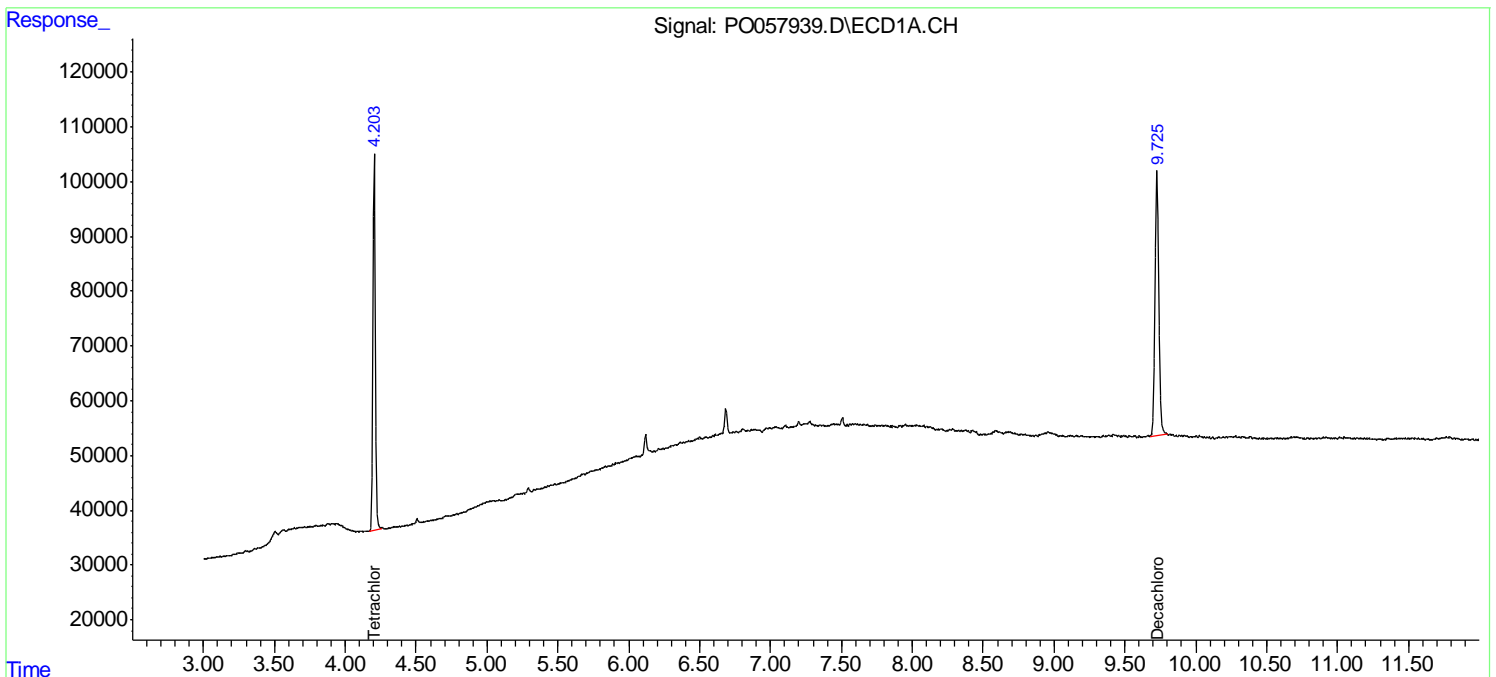
(f)=RT Delta > 1/2 Window (#)=Amounts differ by > 25% (m)=manual int.

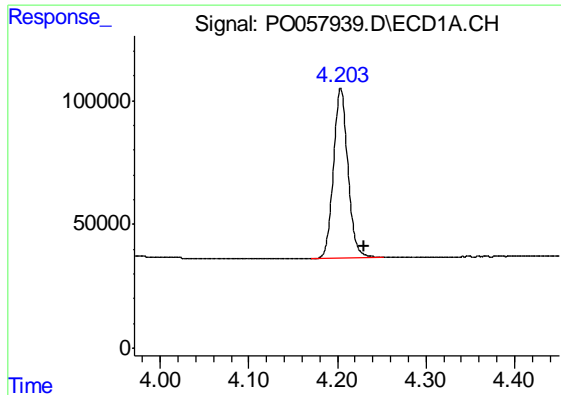
Data Path : Z:\pestpcbsrv\HPCHEM1\ECD_O\Data\PO071419\
Data File : PO057939.D
Signal(s) : Signal #1: ECD1A.CH Signal #2: ECD2B.CH
Acq On : 13 Jul 2019 11:44
Operator : SM/AJ
Sample : I.BLK
Misc :
ALS Vial : 2 Sample Multiplier: 1

Instrument :
ECD_O
ClientSampled :
I.BLK

Integration File signal 1: autoint1.e
Integration File signal 2: autoint2.e
Quant Time: Jul 15 02:19:13 2019
Quant Method : Z:\pestpcbsrv\HPCHEM1\ECD_O\methods\PO062419.M
Quant Title : GC EXTRACTABLES
QLast Update : Mon Jun 24 14:02:43 2019
Response via : Initial Calibration
Integrator: ChemStation 6890 Scale Mode: Small noise peaks clipped

Volume Inj. : 2 µl
Signal #1 Phase : ZB-MR1 Signal #2 Phase: ZB-MR2
Signal #1 Info : 30Mx0.32mmx 0.50µ Signal #2 Info : 30M x 0.32mm x 0.25µm

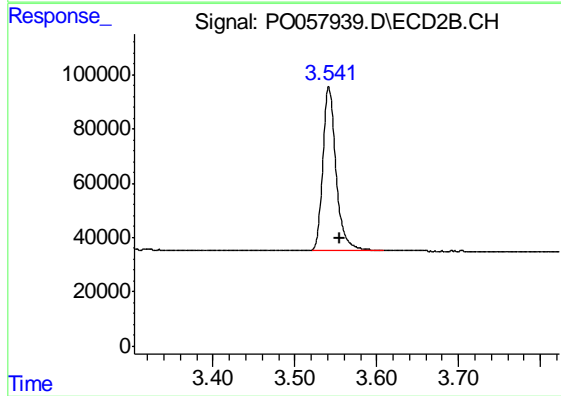




#1 Tetrachloro-m-xylene

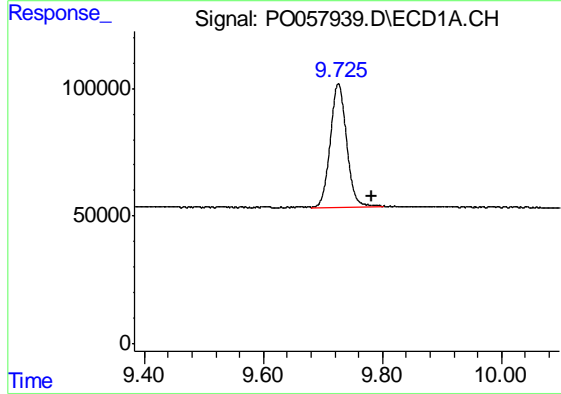
R.T.: 4.204 min
 Delta R.T.: -0.026 min
 Response: 779824
 Conc: 19.85 ng/ml

Instrument :
 ECD_O
 ClientSampled :
 I.BLK



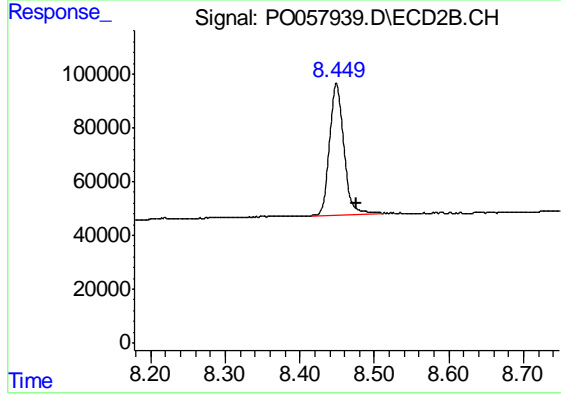
#1 Tetrachloro-m-xylene

R.T.: 3.542 min
 Delta R.T.: -0.014 min
 Response: 672317
 Conc: 19.12 ng/ml



#2 Decachlorobiphenyl

R.T.: 9.726 min
 Delta R.T.: -0.056 min
 Response: 916801
 Conc: 16.30 ng/ml



#2 Decachlorobiphenyl

R.T.: 8.449 min
 Delta R.T.: -0.028 min
 Response: 642241
 Conc: 17.17 ng/ml