

Data Path : Z:\pestpcbsrv\HPCHEM1\ECD_0\Data\P0071522\
 Data File : P0088086.D
 Signal(s) : Signal #1: ECD1A.ch Signal #2: ECD2B.ch
 Acq On : 15 Jul 2022 14:31
 Operator : YP/AJ
 Sample : N3720-07
 Misc :
 ALS Vial : 13 Sample Multiplier: 1

Instrument :
 ECD_0
 ClientSampleId :
 PIPE-5

Integration File signal 1: autoint1.e
 Integration File signal 2: autoint2.e
 Quant Time: Jul 16 01:32:36 2022
 Quant Method : Z:\pestpcbsrv\HPCHEM1\ECD_0\methods\P0071422.M
 Quant Title : GC EXTRACTABLES
 QLast Update : Fri Jul 15 03:57:23 2022
 Response via : Initial Calibration
 Integrator: ChemStation

Volume Inj. : 2 µl
 Signal #1 Phase : ZB-MR1 Signal #2 Phase: ZB-MR2
 Signal #1 Info : 30Mx0.32mmx 0.50µ Signal #2 Info : 30M x 0.32mm x 0.25µm

Compound	RT#1	RT#2	Resp#1	Resp#2	ng/ml	ng/ml

System Monitoring Compounds						
1) SA Tetrachlo...	4.447	3.605	49840573	17368128	19.536	18.409
2) SA Decachlor...	10.296	8.606	43685850	19872376	20.571	19.016

Target Compounds

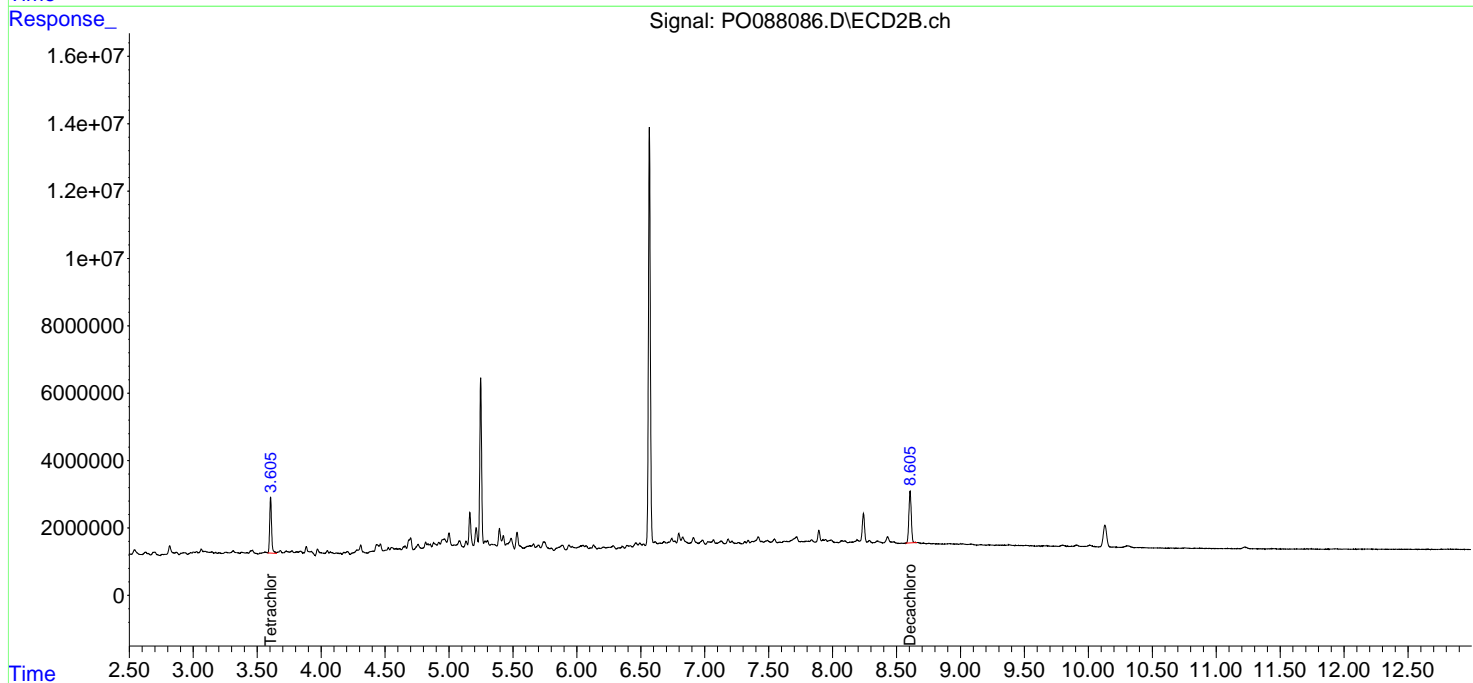
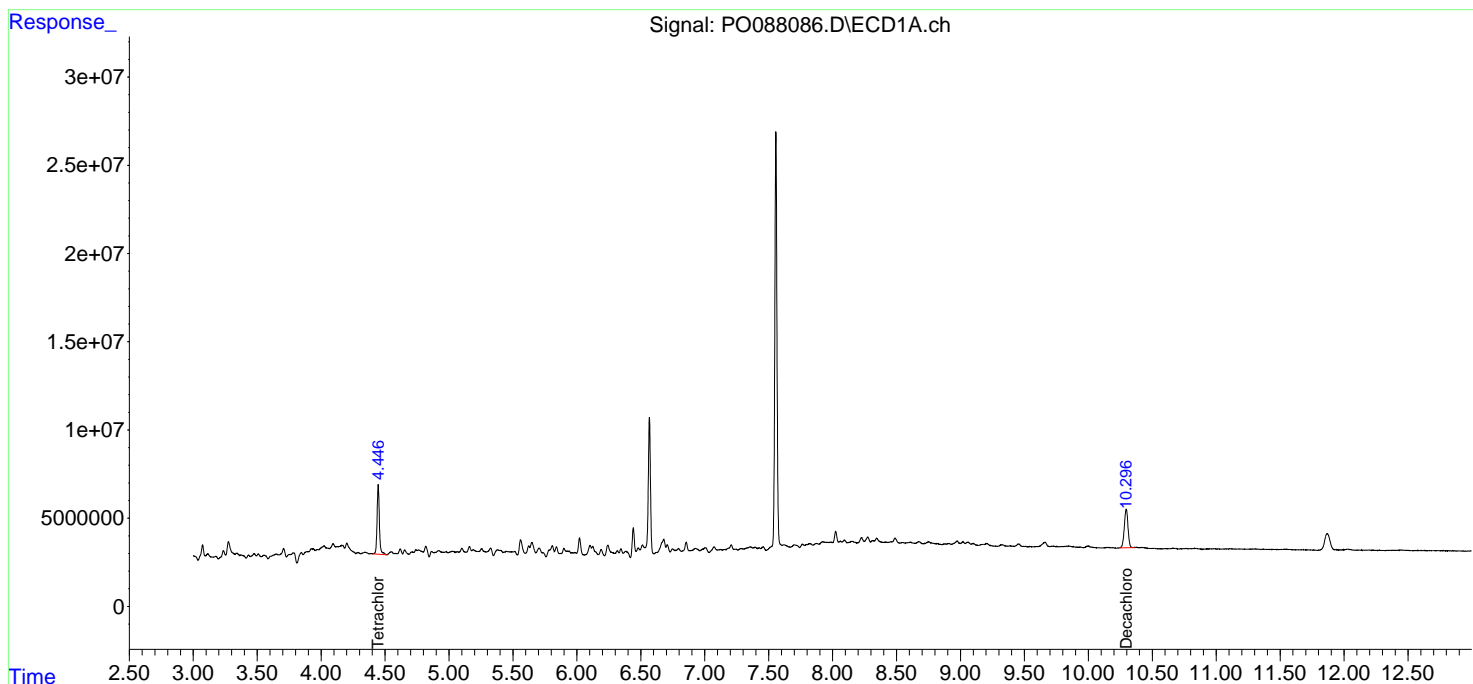
(f)=RT Delta > 1/2 Window (#)=Amounts differ by > 25% (m)=manual int.

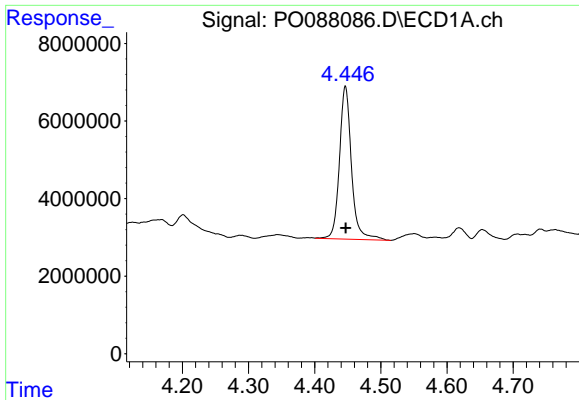
Data Path : Z:\pestpcbsrv\HPCHEM1\ECD_O\Data\P0071522\
 Data File : P0088086.D
 Signal(s) : Signal #1: ECD1A.ch Signal #2: ECD2B.ch
 Acq On : 15 Jul 2022 14:31
 Operator : YP/AJ
 Sample : N3720-07
 Misc :
 ALS Vial : 13 Sample Multiplier: 1

Instrument :
 ECD_O
 ClientSampleId :
 PIPE-5

Integration File signal 1: autoint1.e
 Integration File signal 2: autoint2.e
 Quant Time: Jul 16 01:32:36 2022
 Quant Method : Z:\pestpcbsrv\HPCHEM1\ECD_O\methods\P0071422.M
 Quant Title : GC EXTRACTABLES
 QLast Update : Fri Jul 15 03:57:23 2022
 Response via : Initial Calibration
 Integrator: ChemStation

Volume Inj. : 2 µl
 Signal #1 Phase : ZB-MR1 Signal #2 Phase: ZB-MR2
 Signal #1 Info : 30Mx0.32mmx 0.50µ Signal #2 Info : 30M x 0.32mm x 0.25µm

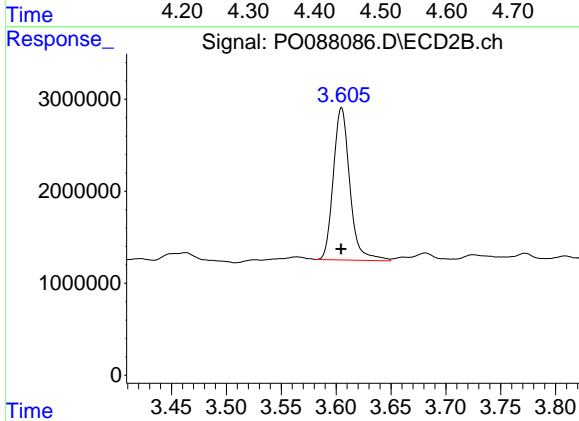




#1 Tetrachloro-m-xylene

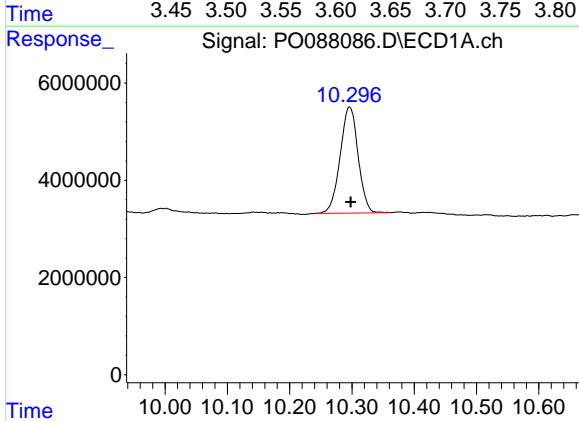
R.T.: 4.447 min
 Delta R.T.: 0.000 min
 Response: 49840573
 Conc: 19.54 ng/ml

Instrument :
 ECD_O
 ClientSampleId :
 PIPE-5



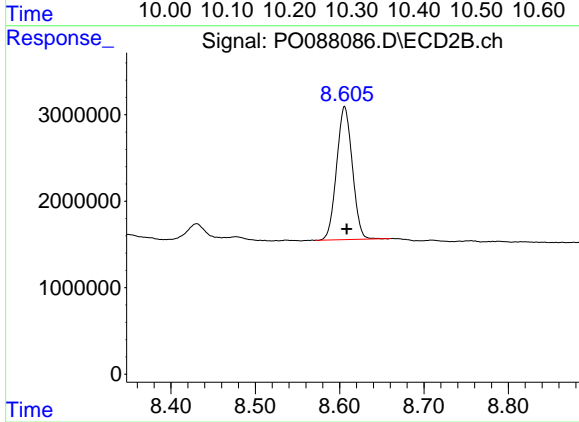
#1 Tetrachloro-m-xylene

R.T.: 3.605 min
 Delta R.T.: 0.000 min
 Response: 17368128
 Conc: 18.41 ng/ml



#2 Decachlorobiphenyl

R.T.: 10.296 min
 Delta R.T.: -0.002 min
 Response: 43685850
 Conc: 20.57 ng/ml



#2 Decachlorobiphenyl

R.T.: 8.606 min
 Delta R.T.: -0.003 min
 Response: 19872376
 Conc: 19.02 ng/ml