

Data Path : Z:\pestpcbsrv\HPCHEM1\ECD\_0\Data\P0071620\  
 Data File : P0069743.D  
 Signal(s) : Signal #1: ECD1A.CH Signal #2: ECD2B.CH  
 Acq On : 16 Jul 2020 18:37  
 Operator : DD\AJ  
 Sample : L3308-06  
 Misc :  
 ALS Vial : 35 Sample Multiplier: 1

Instrument :  
 ECD\_0  
 ClientSampleId :

Integration File signal 1: autoint1.e  
 Integration File signal 2: autoint2.e  
 Quant Time: Jul 17 01:38:30 2020  
 Quant Method : Z:\pestpcbsrv\HPCHEM1\ECD\_0\methods\P0070820.M  
 Quant Title : GC EXTRACTABLES  
 QLast Update : Wed Jul 08 16:12:41 2020  
 Response via : Initial Calibration  
 Integrator: ChemStation 6890 Scale Mode: Small noise peaks clipped

Volume Inj. : 2 µl  
 Signal #1 Phase : ZB-MR1 Signal #2 Phase: ZB-MR2  
 Signal #1 Info : 30Mx0.32mmx 0.50µ Signal #2 Info : 30M x 0.32mm x 0.25µm

Compound	RT#1	RT#2	Resp#1	Resp#2	ng/ml	ng/ml
-----						
System Monitoring Compounds						
1) SA Tetrachlo...	4.391	3.565	1169887	1192702	31.334	29.970
2) SA Decachlor...	10.046	8.770	868524	805632	14.435	14.195
Target Compounds						
10) L2 AR-1221-3	4.840	4.002	37627	45937	37.030	42.004
11) L3 AR-1232-1	4.840	4.002	37627	45937	46.259	51.379
27) L6 AR-1254-2	6.826	0.000	28818	0	8.977	N.D. #
28) L6 AR-1254-3	7.196	0.000	11281	0	3.212	N.D. #
32) L7 AR-1260-2	7.608f	6.580f	18394	56596	5.185	17.291 #
-----						

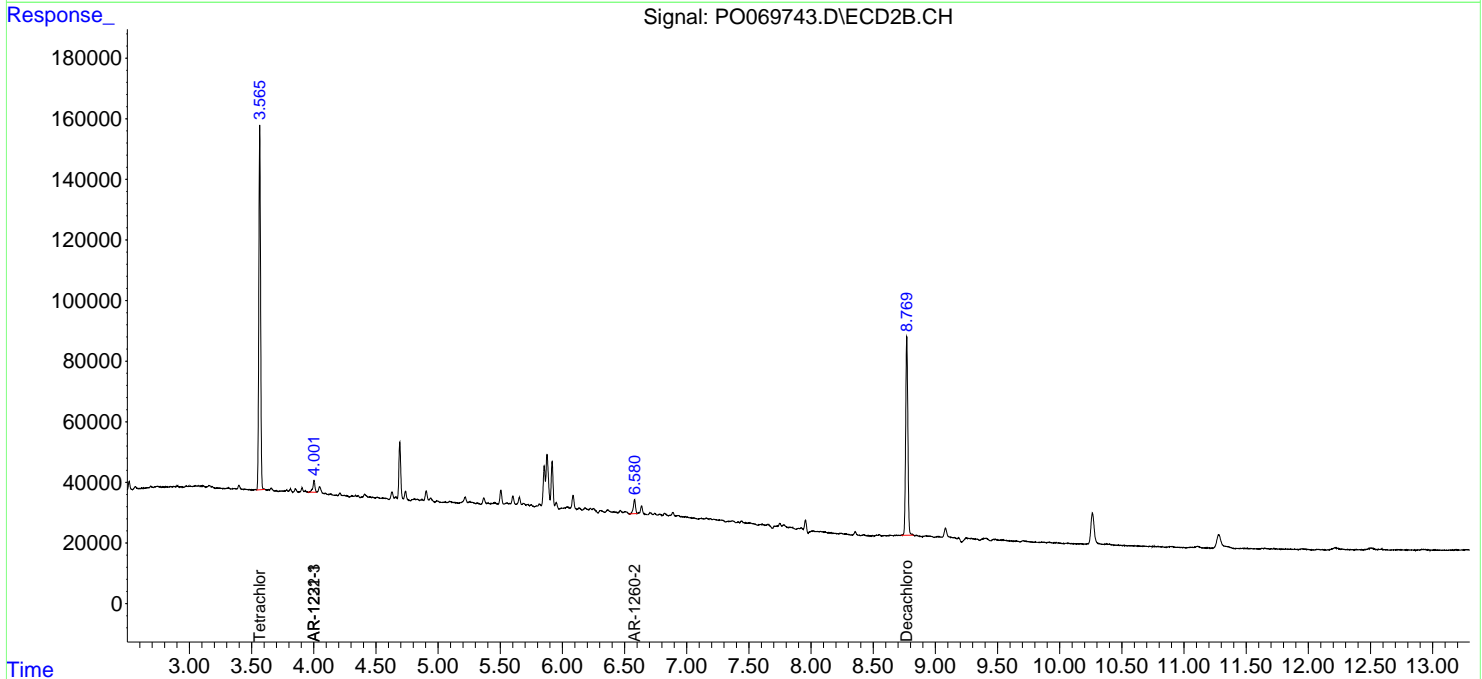
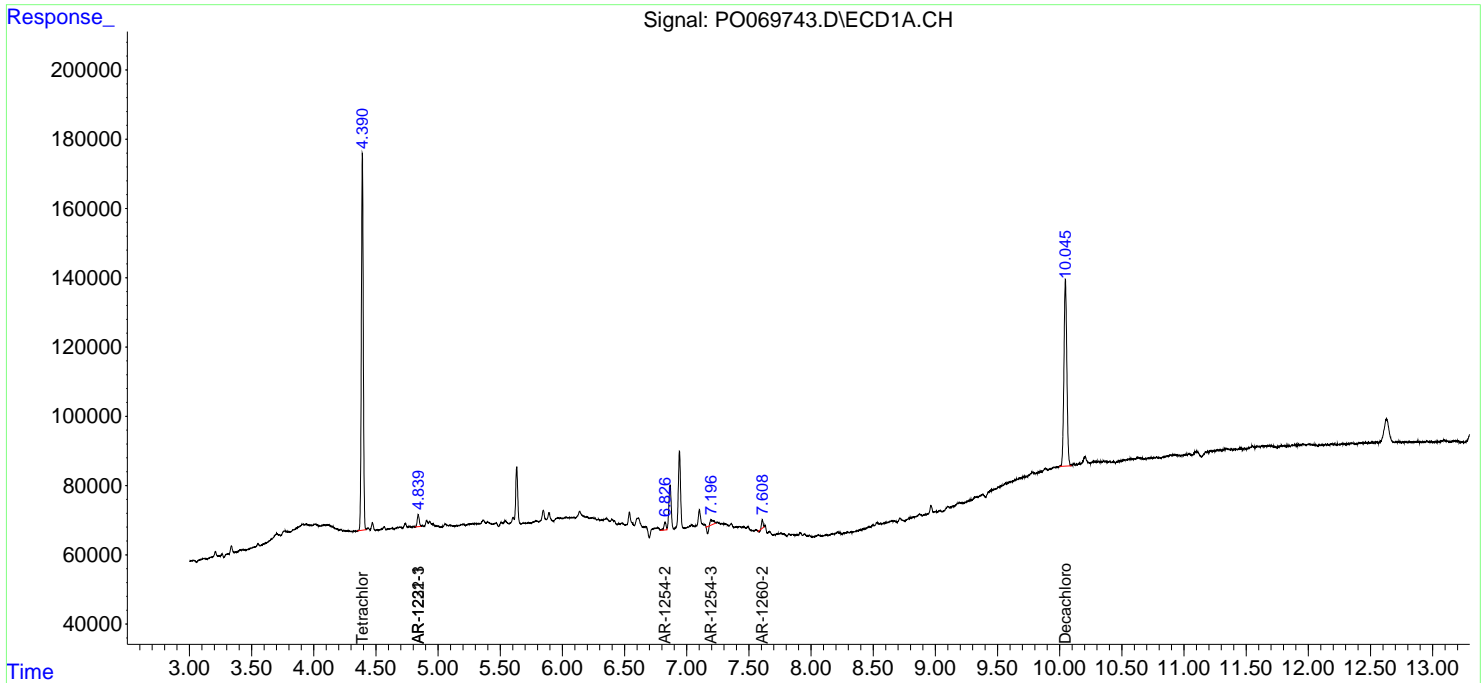
(f)=RT Delta > 1/2 Window (#)=Amounts differ by > 25% (m)=manual int.

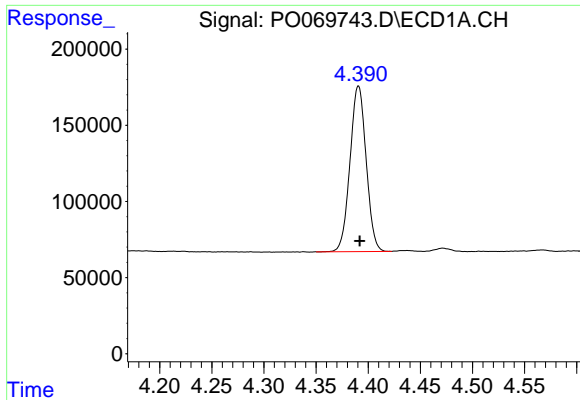
Data Path : Z:\pestpcbsrv\HPCHEM1\ECD\_O\Data\P0071620\  
 Data File : P0069743.D  
 Signal(s) : Signal #1: ECD1A.CH Signal #2: ECD2B.CH  
 Acq On : 16 Jul 2020 18:37  
 Operator : DD\AJ  
 Sample : L3308-06  
 Misc :  
 ALS Vial : 35 Sample Multiplier: 1

Instrument :  
 ECD\_O  
 ClientSampled :

Integration File signal 1: autoint1.e  
 Integration File signal 2: autoint2.e  
 Quant Time: Jul 17 01:38:30 2020  
 Quant Method : Z:\pestpcbsrv\HPCHEM1\ECD\_O\methods\P0070820.M  
 Quant Title : GC EXTRACTABLES  
 QLast Update : Wed Jul 08 16:12:41 2020  
 Response via : Initial Calibration  
 Integrator: ChemStation 6890 Scale Mode: Small noise peaks clipped

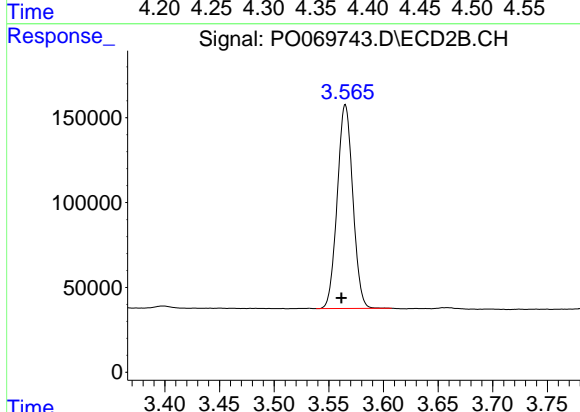
Volume Inj. : 2 µl  
 Signal #1 Phase : ZB-MR1 Signal #2 Phase: ZB-MR2  
 Signal #1 Info : 30Mx0.32mmx 0.50µ Signal #2 Info : 30M x 0.32mm x 0.25µm



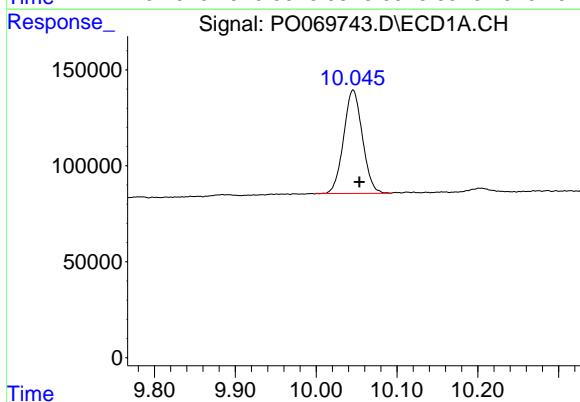


#1 Tetrachloro-m-xylene  
 R.T.: 4.391 min  
 Delta R.T.: -0.001 min  
 Response: 1169887  
 Conc: 31.33 ng/ml

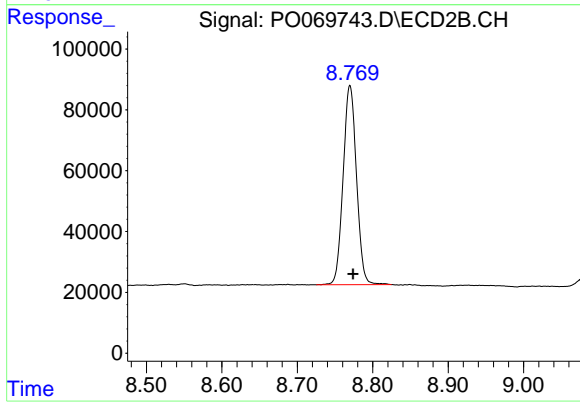
Instrument :  
 ECD\_O  
 ClientSampled :



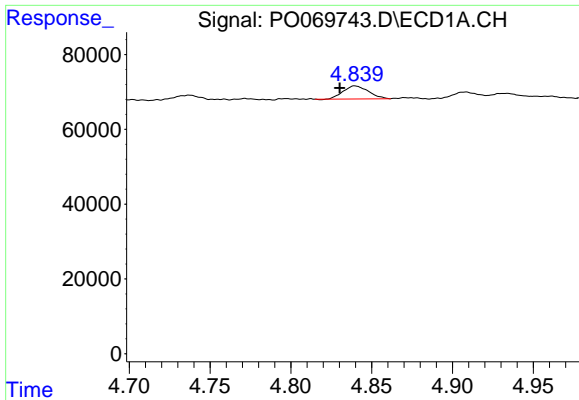
#1 Tetrachloro-m-xylene  
 R.T.: 3.565 min  
 Delta R.T.: 0.004 min  
 Response: 1192702  
 Conc: 29.97 ng/ml



#2 Decachlorobiphenyl  
 R.T.: 10.046 min  
 Delta R.T.: -0.008 min  
 Response: 868524  
 Conc: 14.44 ng/ml

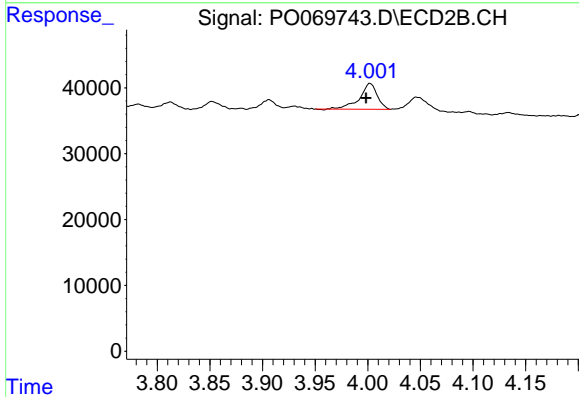


#2 Decachlorobiphenyl  
 R.T.: 8.770 min  
 Delta R.T.: -0.004 min  
 Response: 805632  
 Conc: 14.20 ng/ml

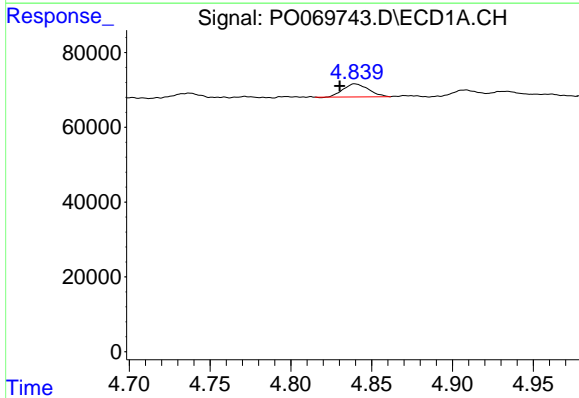


#10 AR-1221-3  
 R.T.: 4.840 min  
 Delta R.T.: 0.009 min  
 Response: 37627  
 Conc: 37.03 ng/ml

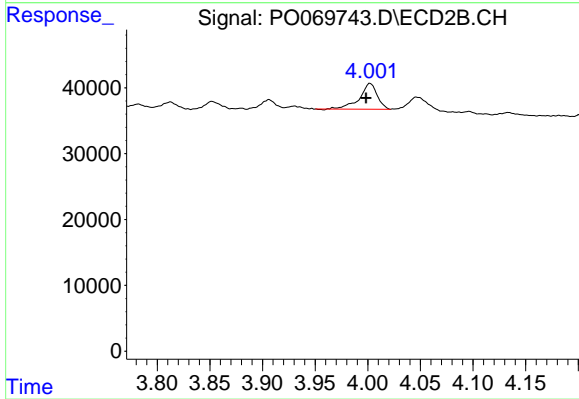
Instrument :  
 ECD\_O  
 ClientSampleId :



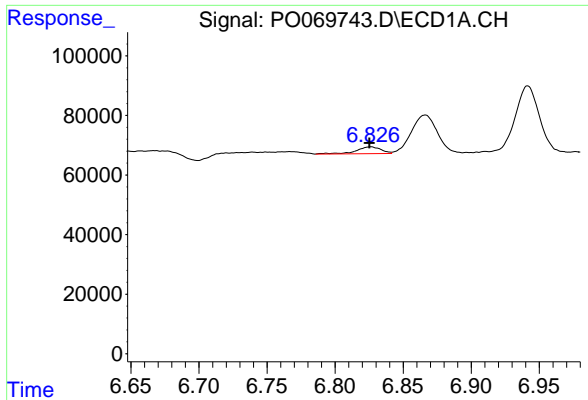
#10 AR-1221-3  
 R.T.: 4.002 min  
 Delta R.T.: 0.004 min  
 Response: 45937  
 Conc: 42.00 ng/ml



#11 AR-1232-1  
 R.T.: 4.840 min  
 Delta R.T.: 0.009 min  
 Response: 37627  
 Conc: 46.26 ng/ml



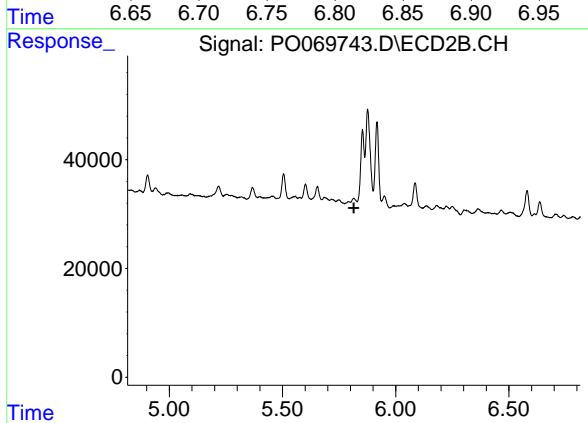
#11 AR-1232-1  
 R.T.: 4.002 min  
 Delta R.T.: 0.004 min  
 Response: 45937  
 Conc: 51.38 ng/ml



#27 AR-1254-2

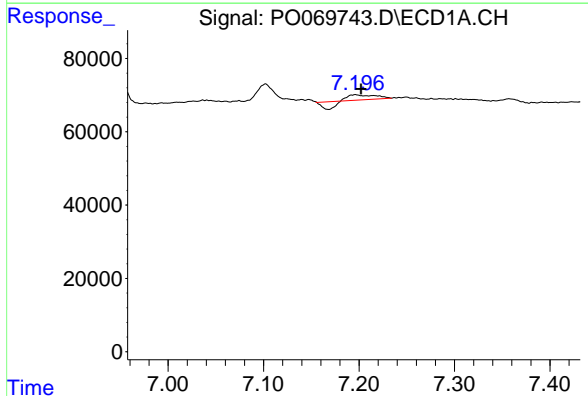
R.T.: 6.826 min  
 Delta R.T.: 0.001 min  
 Response: 28818  
 Conc: 8.98 ng/ml

Instrument :  
 ECD\_O  
 ClientSampleId :



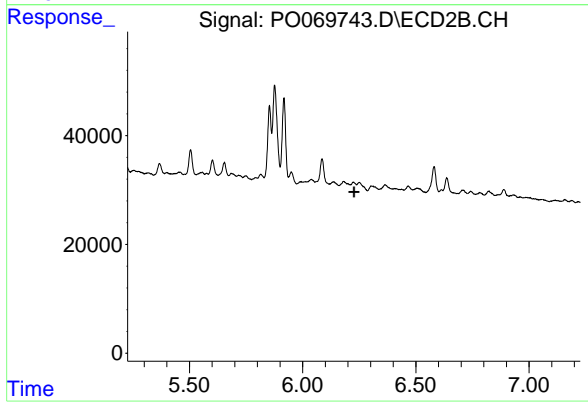
#27 AR-1254-2

R.T.: 0.000 min  
 Exp R.T. : 5.815 min  
 Response: 0  
 Conc: N.D.



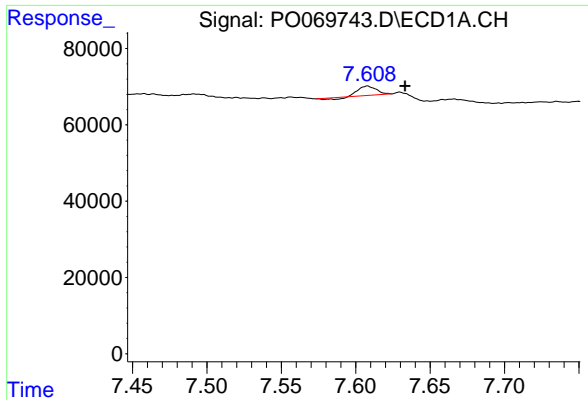
#28 AR-1254-3

R.T.: 7.196 min  
 Delta R.T.: -0.006 min  
 Response: 11281  
 Conc: 3.21 ng/ml



#28 AR-1254-3

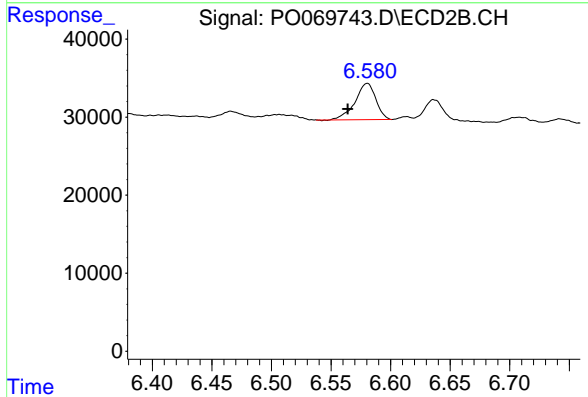
R.T.: 0.000 min  
 Exp R.T. : 6.227 min  
 Response: 0  
 Conc: N.D.



#32 AR-1260-2

R.T.: 7.608 min  
Delta R.T.: -0.025 min  
Response: 18394  
Conc: 5.19 ng/ml

Instrument :  
ECD\_O  
ClientSampleId :



#32 AR-1260-2

R.T.: 6.580 min  
Delta R.T.: 0.016 min  
Response: 56596  
Conc: 17.29 ng/ml