

Data Path : Z:\pestpcbsrv\HPCHEM1\ECD_0\Data\P0071620\
 Data File : P0069759.D
 Signal(s) : Signal #1: ECD1A.CH Signal #2: ECD2B.CH
 Acq On : 16 Jul 2020 23:46
 Operator : DD\AJ
 Sample : L3332-04
 Misc :
 ALS Vial : 49 Sample Multiplier: 1

Instrument :
 ECD_0
 ClientSampleId :
 S4-01-S-01

Integration File signal 1: autoint1.e
 Integration File signal 2: autoint2.e
 Quant Time: Jul 17 01:44:13 2020
 Quant Method : Z:\pestpcbsrv\HPCHEM1\ECD_0\methods\P0070820.M
 Quant Title : GC EXTRACTABLES
 QLast Update : Wed Jul 08 16:12:41 2020
 Response via : Initial Calibration
 Integrator: ChemStation 6890 Scale Mode: Small noise peaks clipped

Volume Inj. : 2 µl
 Signal #1 Phase : ZB-MR1 Signal #2 Phase: ZB-MR2
 Signal #1 Info : 30Mx0.32mmx 0.50µ Signal #2 Info : 30M x 0.32mm x 0.25µm

Compound	RT#1	RT#2	Resp#1	Resp#2	ng/ml	ng/ml

System Monitoring Compounds						
1) SA Tetrachlo...	4.390	3.565	1144656	1213886	30.658	30.503
2) SA Decachlor...	10.044	8.770	940867	853574	15.638	15.040
Target Compounds						
26) L6 AR-1254-1	6.592	5.652	2213921	2455661	1112.198	943.363
27) L6 AR-1254-2	6.820	5.814	5288962	3906029	1647.528	1691.966
28) L6 AR-1254-3	7.197	6.225	8408343	8364094	2394.114	2227.154
29) L6 AR-1254-4	7.492	6.466	9927977	7429497	3317.206	2939.892
30) L6 AR-1254-5	7.914	6.890	17426253	19191119	5791.774	5347.278

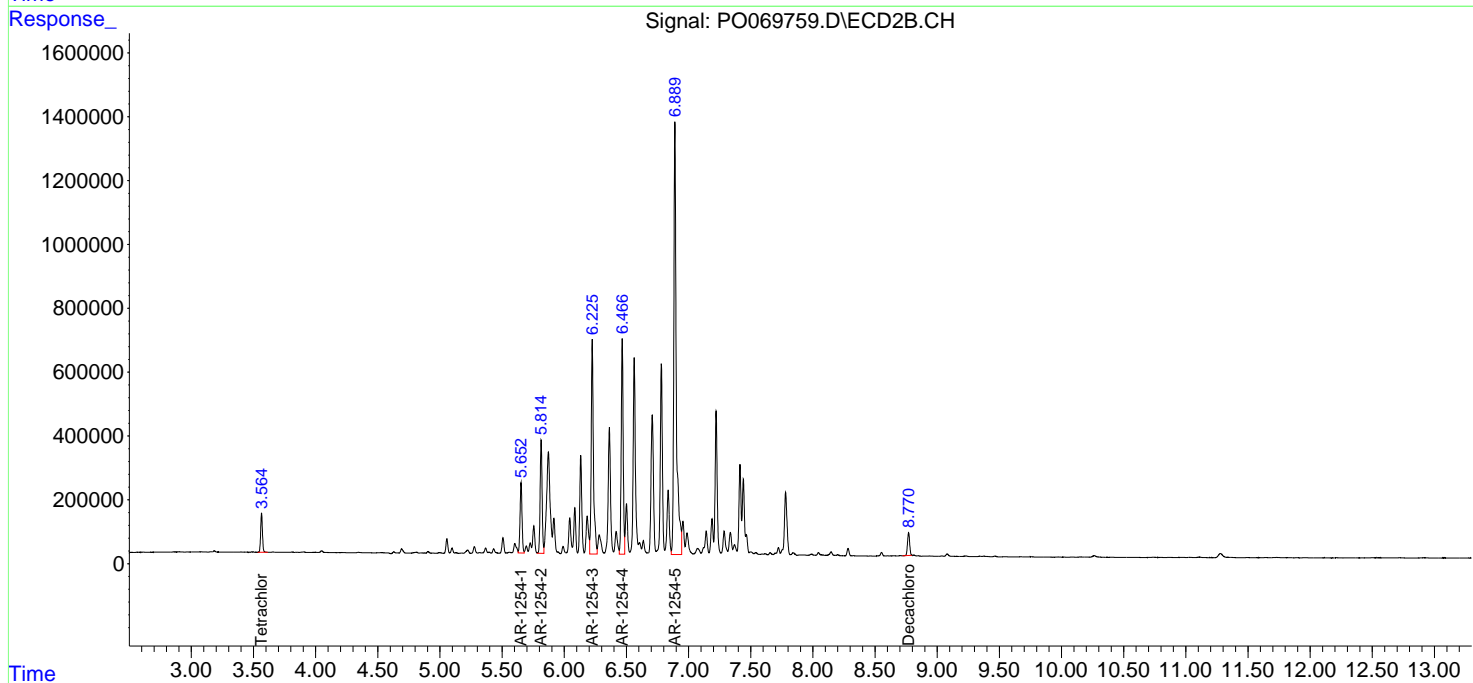
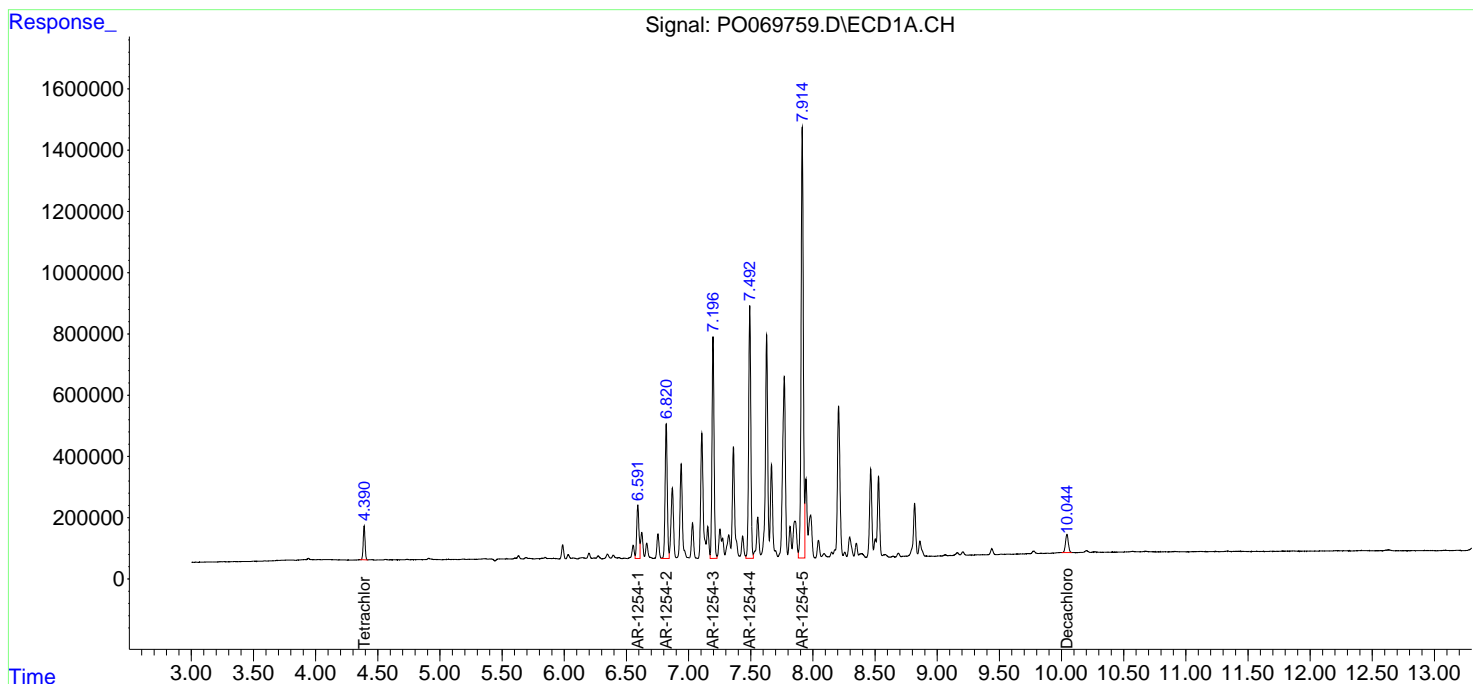
(f)=RT Delta > 1/2 Window (#)=Amounts differ by > 25% (m)=manual int.

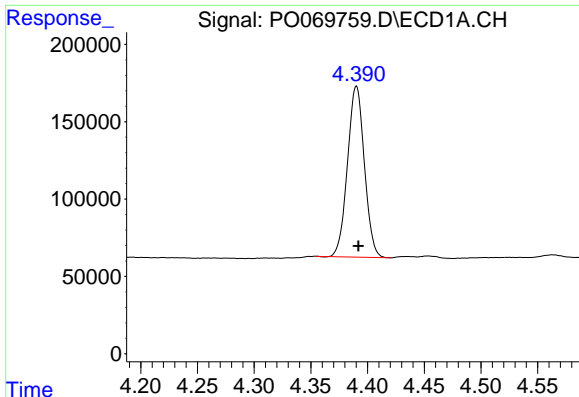
Data Path : Z:\pestpcbsrv\HPCHEM1\ECD_O\Data\P0071620\
 Data File : P0069759.D
 Signal(s) : Signal #1: ECD1A.CH Signal #2: ECD2B.CH
 Acq On : 16 Jul 2020 23:46
 Operator : DD\AJ
 Sample : L3332-04
 Misc :
 ALS Vial : 49 Sample Multiplier: 1

Instrument :
 ECD_O
 ClientSampled :
 S4-01-S-01

Integration File signal 1: autoint1.e
 Integration File signal 2: autoint2.e
 Quant Time: Jul 17 01:44:13 2020
 Quant Method : Z:\pestpcbsrv\HPCHEM1\ECD_O\methods\P0070820.M
 Quant Title : GC EXTRACTABLES
 QLast Update : Wed Jul 08 16:12:41 2020
 Response via : Initial Calibration
 Integrator: ChemStation 6890 Scale Mode: Small noise peaks clipped

Volume Inj. : 2 µl
 Signal #1 Phase : ZB-MR1 Signal #2 Phase: ZB-MR2
 Signal #1 Info : 30Mx0.32mmx 0.50µ Signal #2 Info : 30M x 0.32mm x 0.25µm

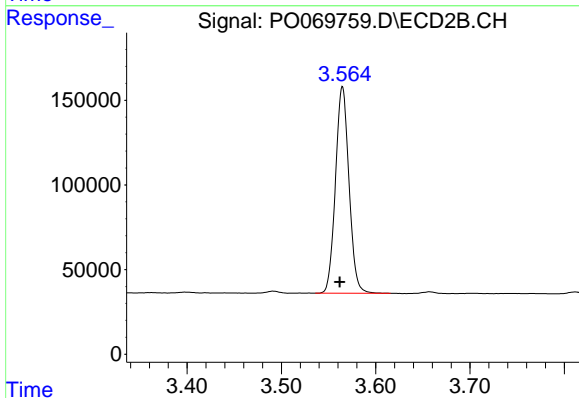




#1 Tetrachloro-m-xylene

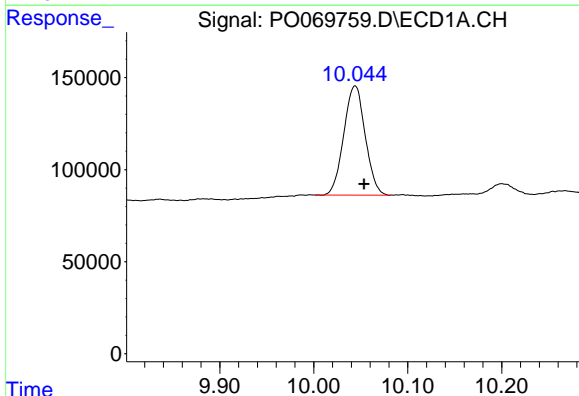
R.T.: 4.390 min
 Delta R.T.: -0.002 min
 Response: 1144656
 Conc: 30.66 ng/ml

Instrument :
 ECD_O
 ClientSampleId :
 S4-01-S-01



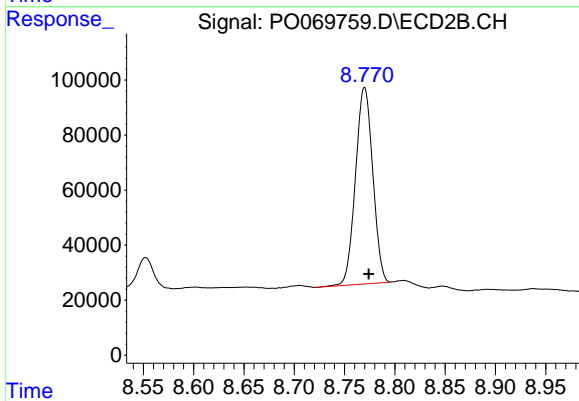
#1 Tetrachloro-m-xylene

R.T.: 3.565 min
 Delta R.T.: 0.003 min
 Response: 1213886
 Conc: 30.50 ng/ml



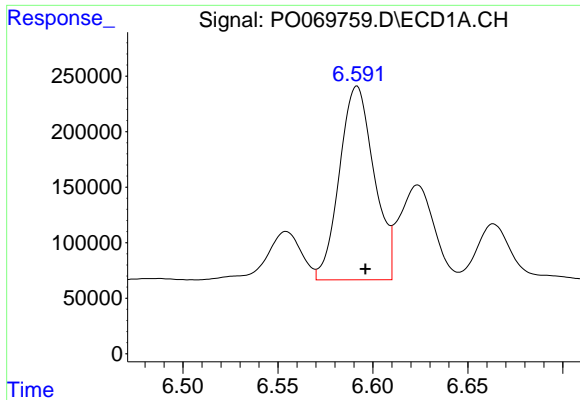
#2 Decachlorobiphenyl

R.T.: 10.044 min
 Delta R.T.: -0.009 min
 Response: 940867
 Conc: 15.64 ng/ml



#2 Decachlorobiphenyl

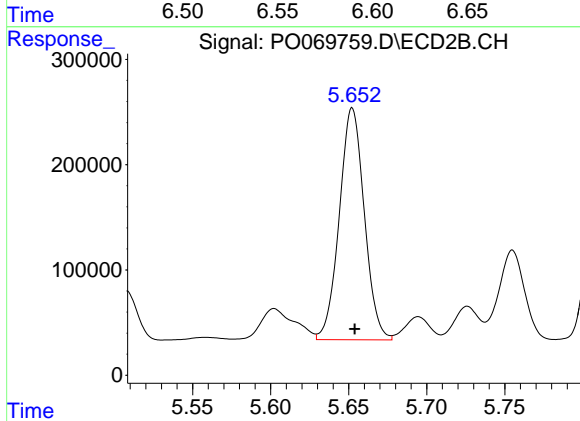
R.T.: 8.770 min
 Delta R.T.: -0.004 min
 Response: 853574
 Conc: 15.04 ng/ml



#26 AR-1254-1

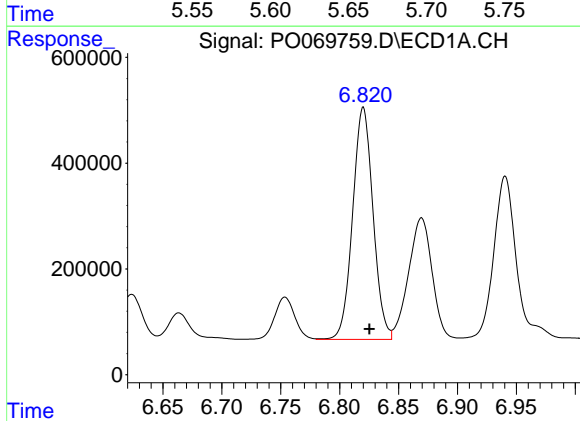
R.T.: 6.592 min
 Delta R.T.: -0.005 min
 Response: 2213921
 Conc: 1112.20 ng/ml

Instrument :
 ECD_O
 ClientSampleId :
 S4-01-S-01



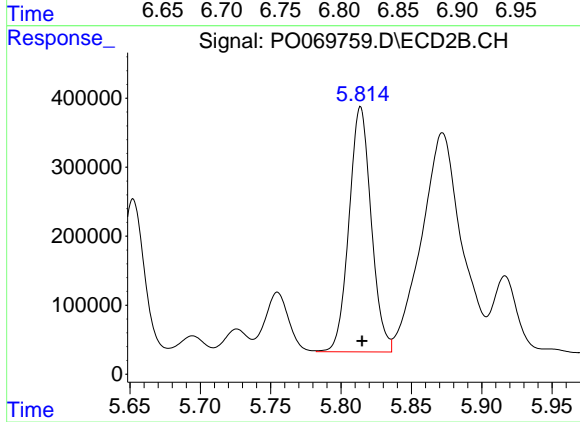
#26 AR-1254-1

R.T.: 5.652 min
 Delta R.T.: -0.002 min
 Response: 2455661
 Conc: 943.36 ng/ml



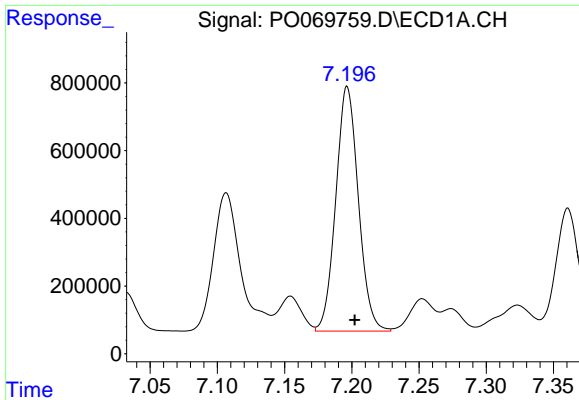
#27 AR-1254-2

R.T.: 6.820 min
 Delta R.T.: -0.005 min
 Response: 5288962
 Conc: 1647.53 ng/ml



#27 AR-1254-2

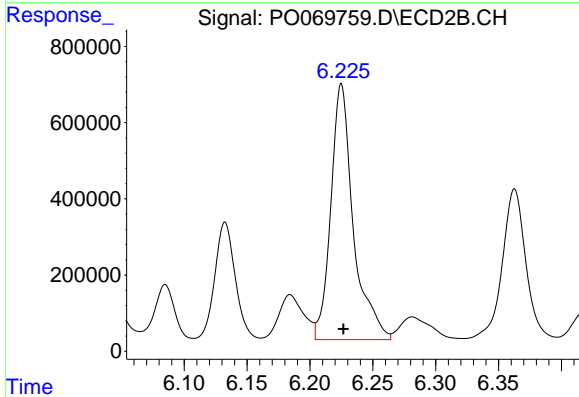
R.T.: 5.814 min
 Delta R.T.: -0.001 min
 Response: 3906029
 Conc: 1691.97 ng/ml



#28 AR-1254-3

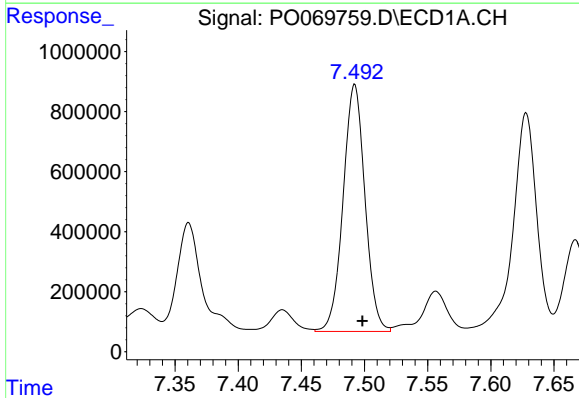
R.T.: 7.197 min
 Delta R.T.: -0.006 min
 Response: 8408343
 Conc: 2394.11 ng/ml

Instrument :
 ECD_O
 ClientSampled :
 S4-01-S-01



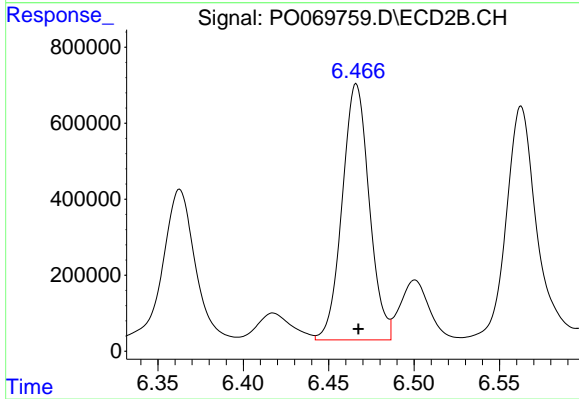
#28 AR-1254-3

R.T.: 6.225 min
 Delta R.T.: -0.002 min
 Response: 8364094
 Conc: 2227.15 ng/ml



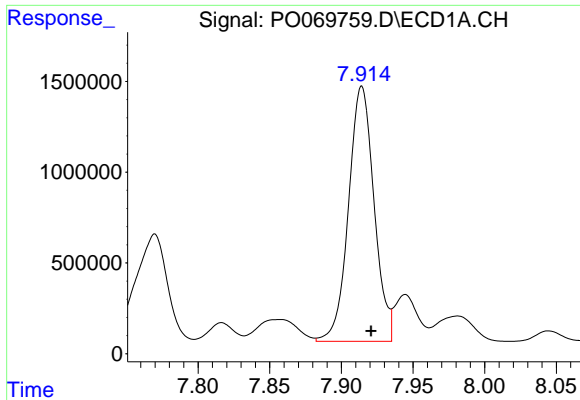
#29 AR-1254-4

R.T.: 7.492 min
 Delta R.T.: -0.006 min
 Response: 9927977
 Conc: 3317.21 ng/ml



#29 AR-1254-4

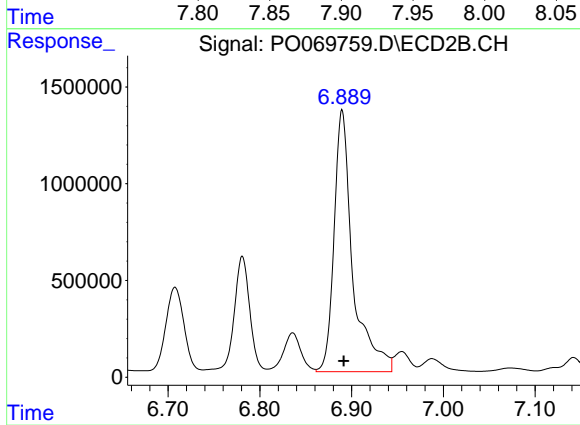
R.T.: 6.466 min
 Delta R.T.: -0.001 min
 Response: 7429497
 Conc: 2939.89 ng/ml



#30 AR-1254-5

R.T.: 7.914 min
Delta R.T.: -0.006 min
Response: 17426253
Conc: 5791.77 ng/ml

Instrument :
ECD_O
ClientSampled :
S4-01-S-01



#30 AR-1254-5

R.T.: 6.890 min
Delta R.T.: -0.002 min
Response: 19191119
Conc: 5347.28 ng/ml