

Data Path : Z:\pestpcbsrv\HPCHEM1\ECD O\Data\PO071718\
 Data File : PO046826.D
 Signal(s) : Signal #1: ECD1A.CH Signal #2: ECD2B.CH
 Acq On : 17 Jul 2018 19:12
 Operator : SM/SJ
 Sample : J3990-06
 Misc :
 ALS Vial : 24 Sample Multiplier: 1

Instrument :
 ECD_O
ClientSampleId :
 071218-DBRI-F-U-S

Manual Integrations
APPROVED
 Sohil
 7/18/2018 1:43:16 PM

Integration File signal 1: autoint1.e
 Integration File signal 2: autoint2.e
 Quant Time: Jul 18 08:21:58 2018
 Quant Method : Z:\pestpcbsrv\HPCHEM1\ECD_O\methods\PO070718.M
 Quant Title : GC EXTRACTABLES
 QLast Update : Mon Jul 09 15:27:34 2018
 Response via : Initial Calibration
 Integrator: ChemStation 6890 Scale Mode: Small noise peaks clipped

Volume Inj. : 2 µl
 Signal #1 Phase : ZB-MR1 Signal #2 Phase: ZB-MR2
 Signal #1 Info : 30Mx0.32mmx 0.50µ Signal #2 Info : 30M x 0.32mm x 0.25µm

Compound	RT#1	RT#2	Resp#1	Resp#2	ng/ml	ng/ml

System Monitoring Compounds						
1) SA Tetrachlo...	4.201	3.525	3738718	3907709	15.644	18.397m
2) SA Decachlor...	9.728	8.452	3365556	3360478	17.657	17.324

Target Compounds

(f)=RT Delta > 1/2 Window (#)=Amounts differ by > 25% (m)=manual int.

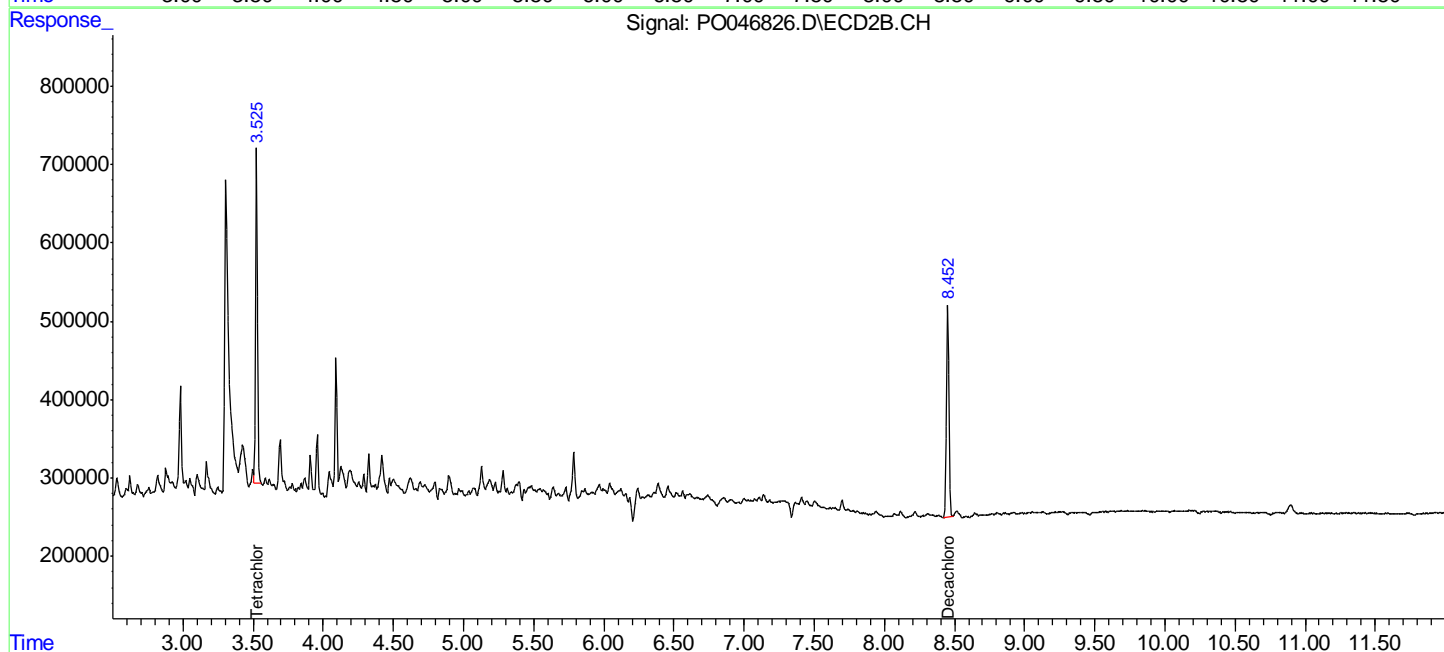
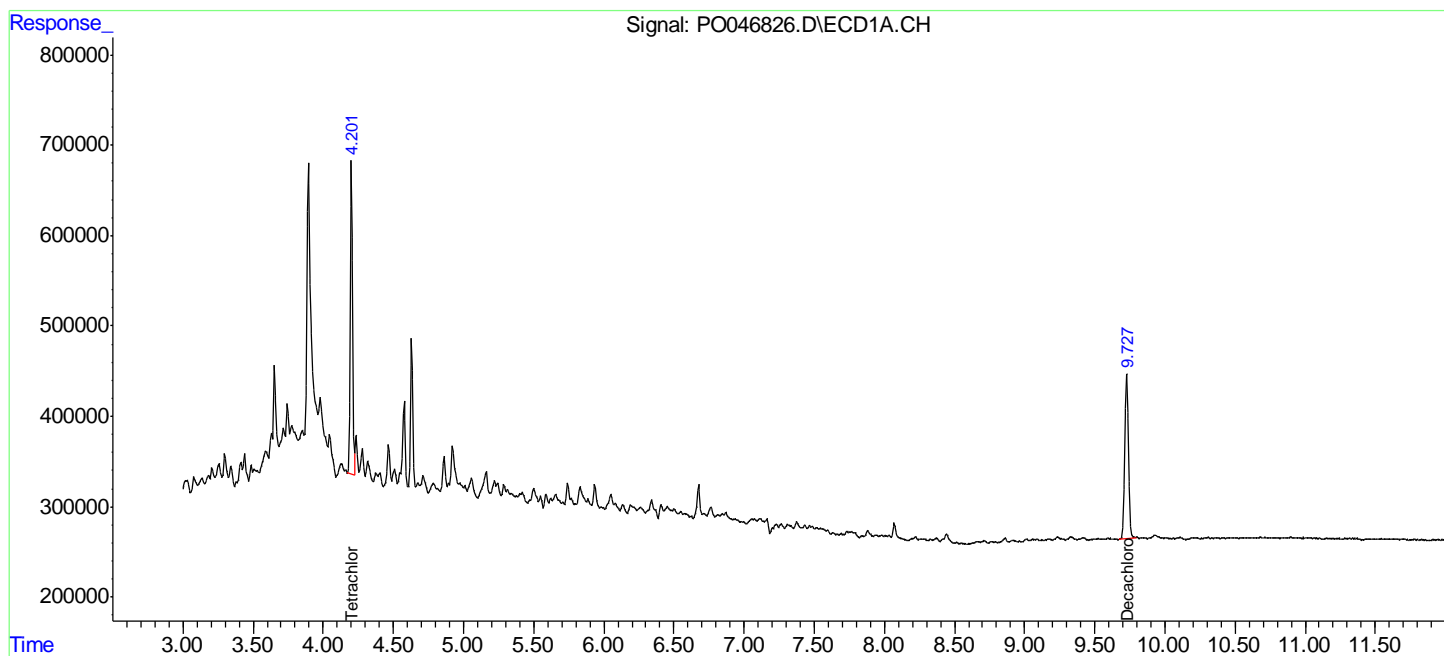
Data Path : Z:\pestpcbsrv\HPCHEM1\ECD O\Data\PO071718\
 Data File : PO046826.D
 Signal(s) : Signal #1: ECD1A.CH Signal #2: ECD2B.CH
 Acq On : 17 Jul 2018 19:12
 Operator : SM/SJ
 Sample : J3990-06
 Misc :
 ALS Vial : 24 Sample Multiplier: 1

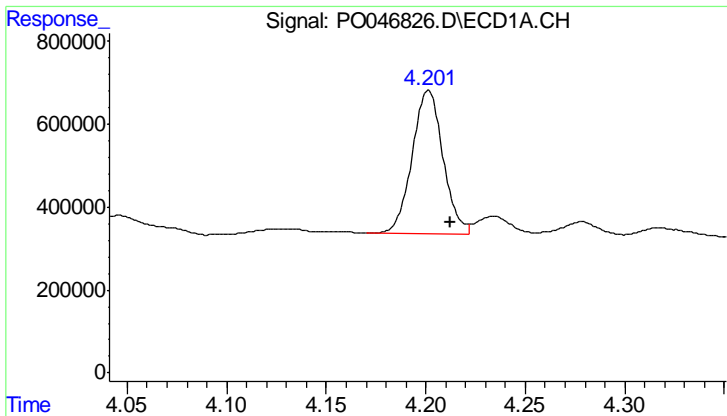
Instrument :
 ECD_O
ClientSampled :
 071218-DBRI-F-U-S

Manual Integrations
APPROVED
 Sohil
 7/18/2018 1:43:16 PM

Integration File signal 1: autoint1.e
 Integration File signal 2: autoint2.e
 Quant Time: Jul 18 08:21:58 2018
 Quant Method : Z:\pestpcbsrv\HPCHEM1\ECD_O\methods\PO070718.M
 Quant Title : GC EXTRACTABLES
 QLast Update : Mon Jul 09 15:27:34 2018
 Response via : Initial Calibration
 Integrator: ChemStation 6890 Scale Mode: Small noise peaks clipped

Volume Inj. : 2 µl
 Signal #1 Phase : ZB-MR1 Signal #2 Phase: ZB-MR2
 Signal #1 Info : 30Mx0.32mmx 0.50µ Signal #2 Info : 30M x 0.32mm x 0.25µm



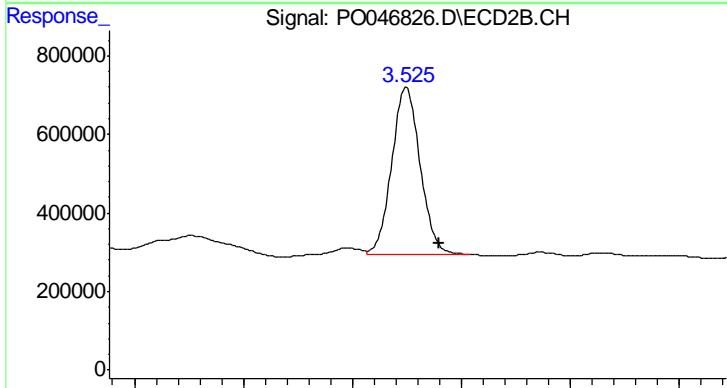


#1 Tetrachloro-m-xylene

R.T.: 4.201 min
 Delta R.T.: -0.011 min
 Response: 3738718
 Conc: 15.64 ng/ml

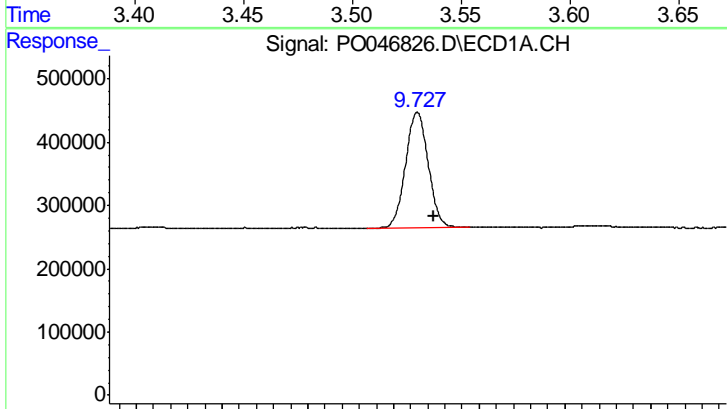
Instrument :
 ECD_O
ClientSampled :
 071218-DBRI-F-U-S

Manual Integrations
APPROVED
 Sohil
 7/18/2018 1:43:16 PM



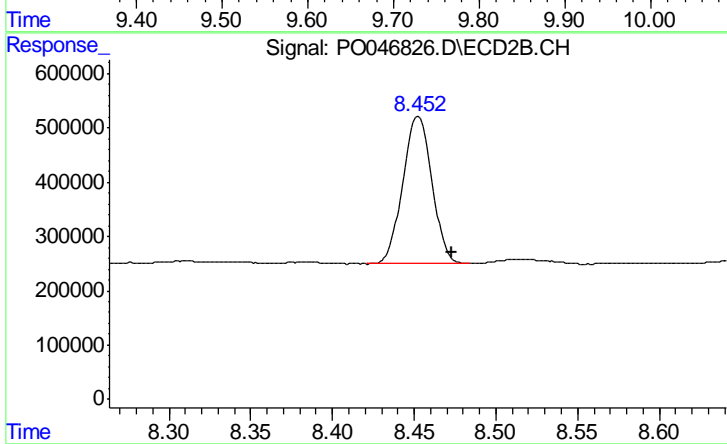
#1 Tetrachloro-m-xylene

R.T.: 3.525 min
 Delta R.T.: -0.015 min
 Response: 3907709
 Conc: 18.40 ng/ml m



#2 Decachlorobiphenyl

R.T.: 9.728 min
 Delta R.T.: -0.020 min
 Response: 3365556
 Conc: 17.66 ng/ml



#2 Decachlorobiphenyl

R.T.: 8.452 min
 Delta R.T.: -0.021 min
 Response: 3360478
 Conc: 17.32 ng/ml