

Data Path : Z:\pestpcbsrv\HPCHEM1\ECD O\Data\PO071718\  
 Data File : PO046842.D  
 Signal(s) : Signal #1: ECD1A.CH Signal #2: ECD2B.CH  
 Acq On : 18 Jul 2018 00:14  
 Operator : SM/SJ  
 Sample : J3997-07  
 Misc :  
 ALS Vial : 38 Sample Multiplier: 1

Instrument :  
 ECD\_O  
 ClientSampleId :  
 TP-F-D

Integration File signal 1: autoint1.e  
 Integration File signal 2: autoint2.e  
 Quant Time: Jul 18 08:33:41 2018  
 Quant Method : Z:\pestpcbsrv\HPCHEM1\ECD\_O\methods\PO070718.M  
 Quant Title : GC EXTRACTABLES  
 QLast Update : Mon Jul 09 15:27:34 2018  
 Response via : Initial Calibration  
 Integrator: ChemStation 6890 Scale Mode: Small noise peaks clipped

Volume Inj. : 2 µl  
 Signal #1 Phase : ZB-MR1 Signal #2 Phase: ZB-MR2  
 Signal #1 Info : 30Mx0.32mmx 0.50µ Signal #2 Info : 30M x 0.32mm x 0.25µm

Compound	RT#1	RT#2	Resp#1	Resp#2	nq/ml	nq/ml
-----						
System Monitoring Compounds						
1) SA Tetrachlo...	4.201	3.525	4765066	5365717	19.939	25.262 #
2) SA Decachlor...	9.727	8.451	2582809	2541020	13.551	13.099

Target Compounds

-----

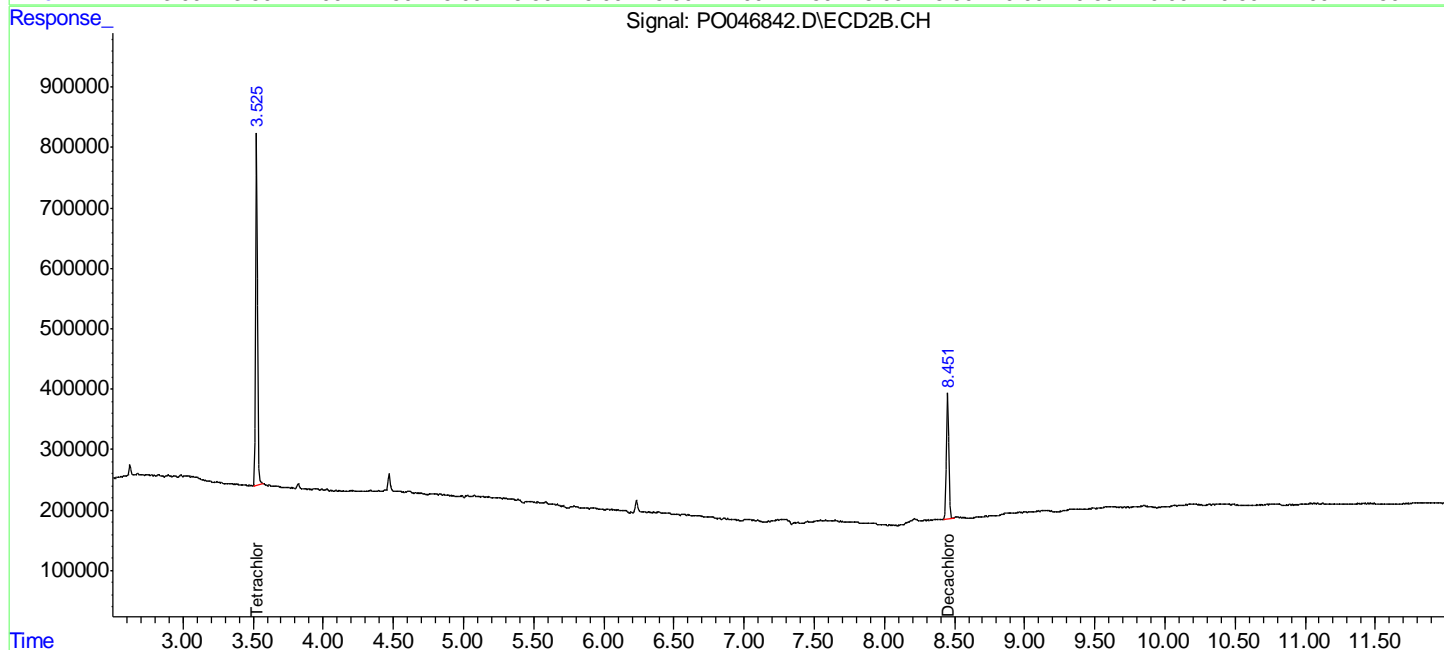
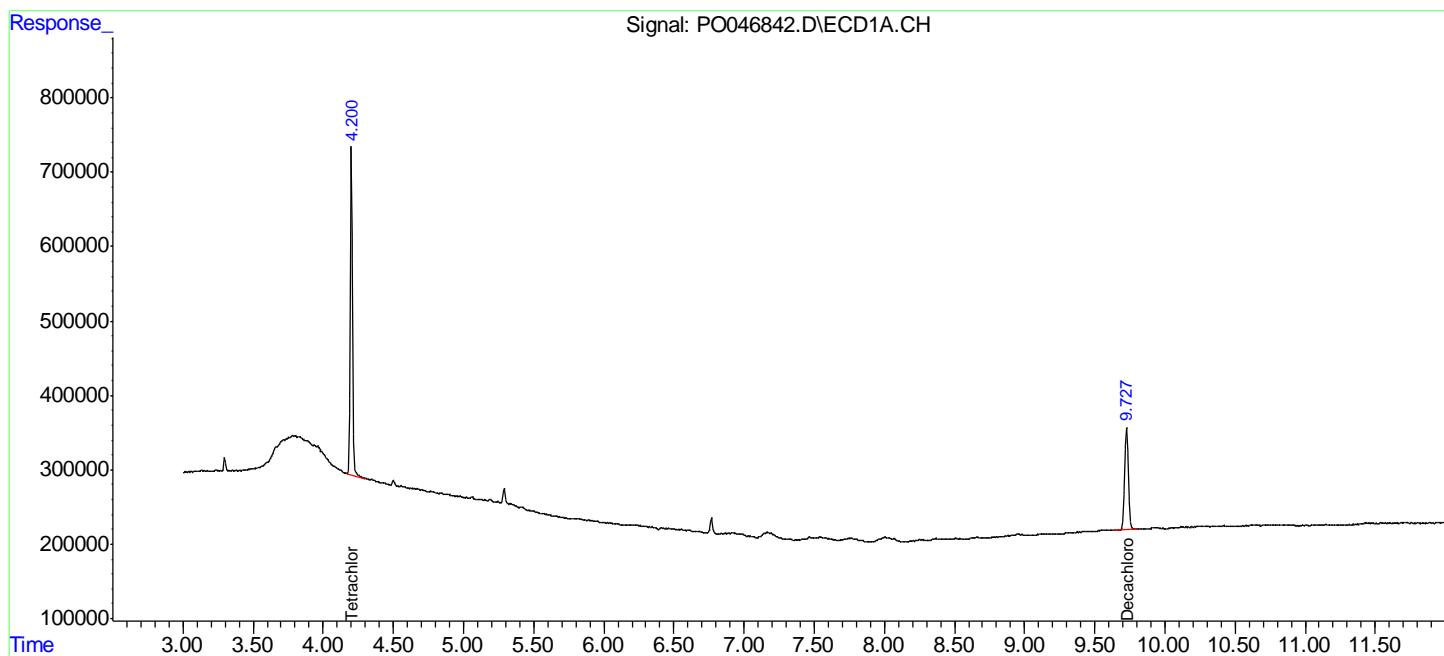
(f)=RT Delta > 1/2 Window (#)=Amounts differ by > 25% (m)=manual int.

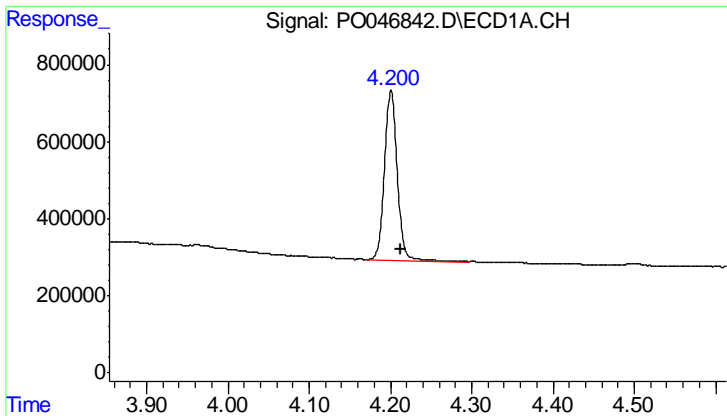
Data Path : Z:\pestpcbsrv\HPCHEM1\ECD O\Data\PO071718\  
 Data File : PO046842.D  
 Signal(s) : Signal #1: ECD1A.CH Signal #2: ECD2B.CH  
 Acq On : 18 Jul 2018 00:14  
 Operator : SM/SJ  
 Sample : J3997-07  
 Misc :  
 ALS Vial : 38 Sample Multiplier: 1

Instrument :  
 ECD\_O  
 ClientSampleId :  
 TP-F-D

Integration File signal 1: autoint1.e  
 Integration File signal 2: autoint2.e  
 Quant Time: Jul 18 08:33:41 2018  
 Quant Method : Z:\pestpcbsrv\HPCHEM1\ECD\_O\methods\PO070718.M  
 Quant Title : GC EXTRACTABLES  
 QLast Update : Mon Jul 09 15:27:34 2018  
 Response via : Initial Calibration  
 Integrator: ChemStation 6890 Scale Mode: Small noise peaks clipped

Volume Inj. : 2 µl  
 Signal #1 Phase : ZB-MR1 Signal #2 Phase: ZB-MR2  
 Signal #1 Info : 30Mx0.32mmx 0.50µ Signal #2 Info : 30M x 0.32mm x 0.25µm

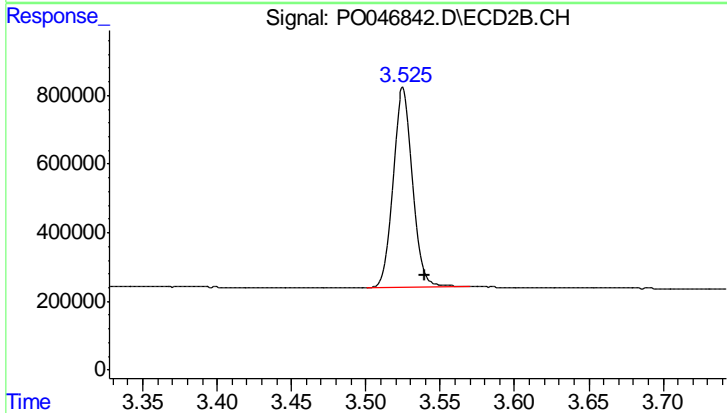




#1 Tetrachloro-m-xylene

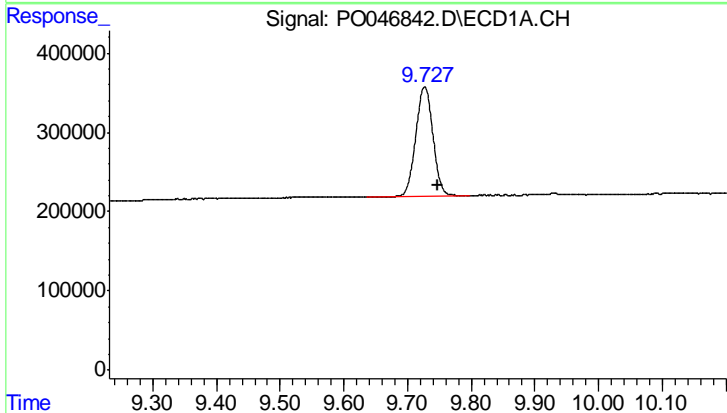
R.T.: 4.201 min  
 Delta R.T.: -0.012 min  
 Response: 4765066  
 Conc: 19.94 ng/ml

Instrument :  
 ECD\_O  
 ClientSampleId :  
 TP-F-D



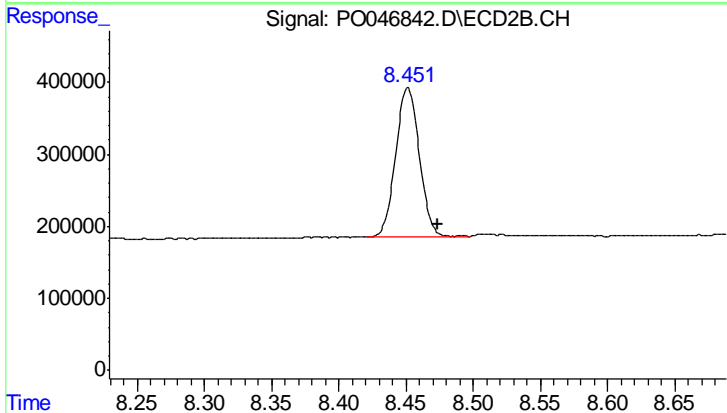
#1 Tetrachloro-m-xylene

R.T.: 3.525 min  
 Delta R.T.: -0.014 min  
 Response: 5365717  
 Conc: 25.26 ng/ml



#2 Decachlorobiphenyl

R.T.: 9.727 min  
 Delta R.T.: -0.021 min  
 Response: 2582809  
 Conc: 13.55 ng/ml



#2 Decachlorobiphenyl

R.T.: 8.451 min  
 Delta R.T.: -0.022 min  
 Response: 2541020  
 Conc: 13.10 ng/ml