

Data Path : Z:\pestpcbsrv\HPCHEM1\ECD O\Data\PO071718\
 Data File : PO046844.D
 Signal(s) : Signal #1: ECD1A.CH Signal #2: ECD2B.CH
 Acq On : 18 Jul 2018 00:46
 Operator : SM/SJ
 Sample : J3997-15
 Misc :
 ALS Vial : 40 Sample Multiplier: 1

Instrument :
 ECD_O
 ClientSampleID :
 TP-H-D

Integration File signal 1: autoint1.e
 Integration File signal 2: autoint2.e
 Quant Time: Jul 18 08:34:25 2018
 Quant Method : Z:\pestpcbsrv\HPCHEM1\ECD_O\methods\PO070718.M
 Quant Title : GC EXTRACTABLES
 QLast Update : Mon Jul 09 15:27:34 2018
 Response via : Initial Calibration
 Integrator: ChemStation 6890 Scale Mode: Small noise peaks clipped

Volume Inj. : 2 µl
 Signal #1 Phase : ZB-MR1 Signal #2 Phase: ZB-MR2
 Signal #1 Info : 30Mx0.32mmx 0.50µ Signal #2 Info : 30M x 0.32mm x 0.25µm

Compound	RT#1	RT#2	Resp#1	Resp#2	ng/ml	ng/ml

System Monitoring Compounds						
1) SA Tetrachlo...	4.201	3.525	4452692	4968898	18.632	23.393 #
2) SA Decachlor...	9.727	8.451	2941395	2984821	15.432	15.387

Target Compounds

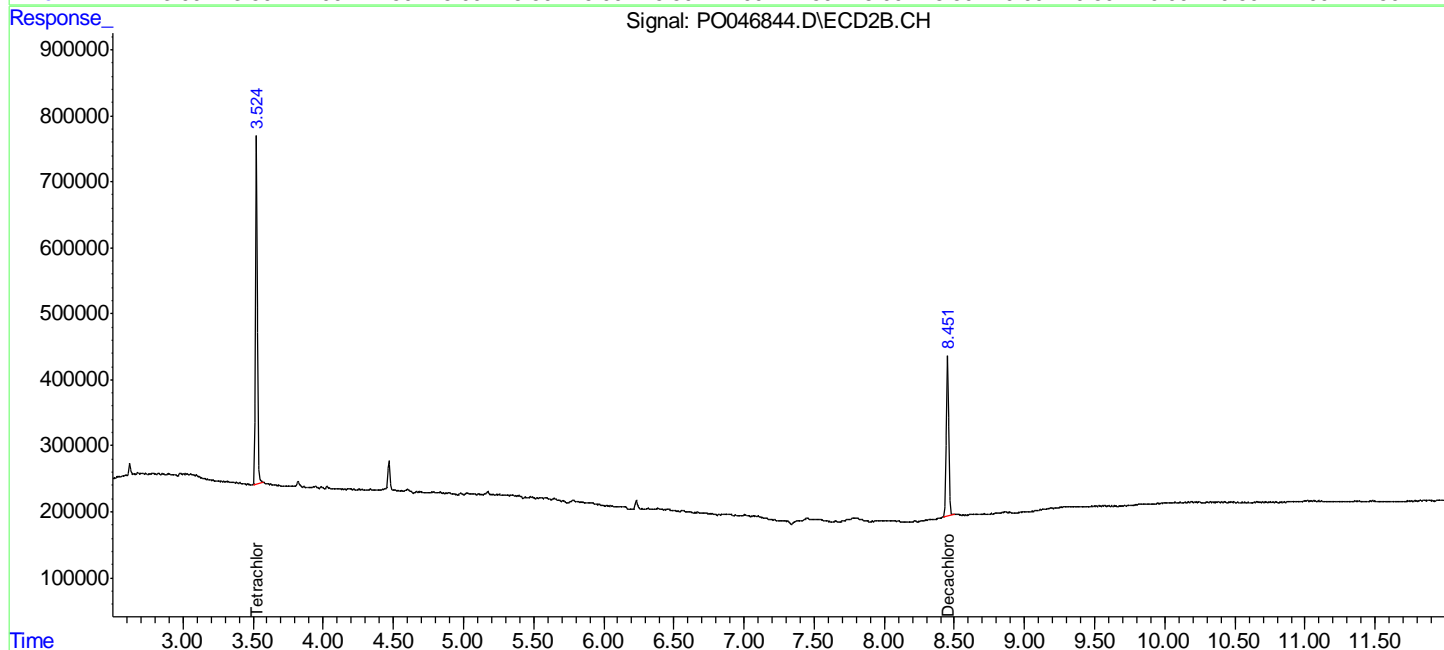
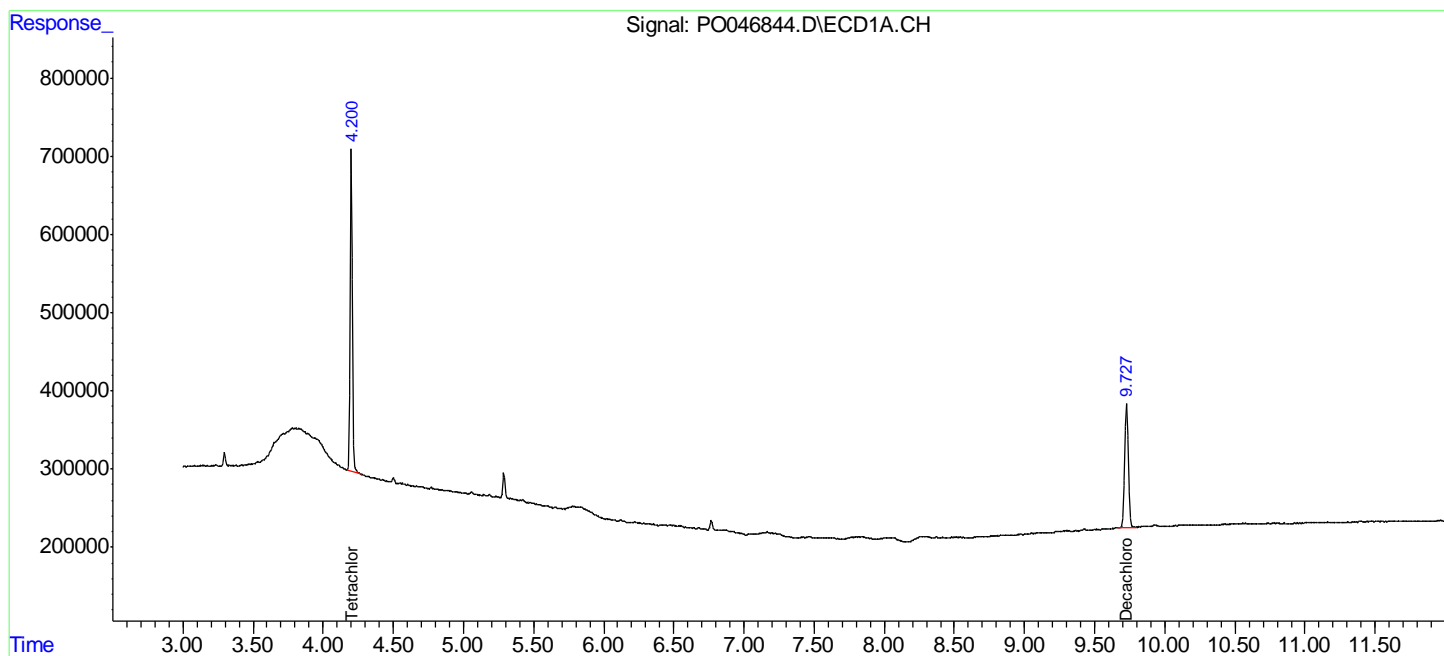
(f)=RT Delta > 1/2 Window (#)=Amounts differ by > 25% (m)=manual int.

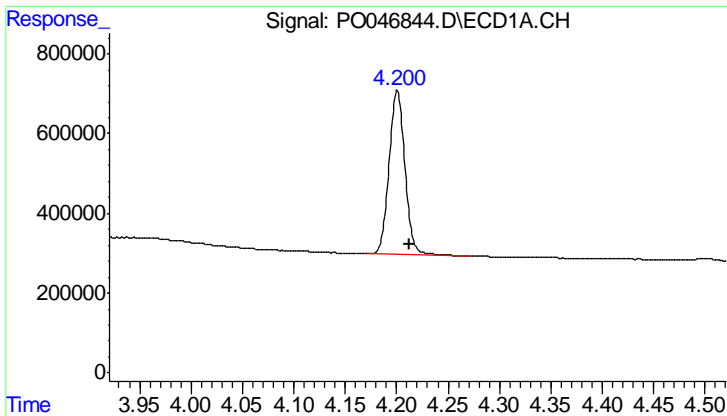
Data Path : Z:\pestpcbsrv\HPCHEM1\ECD O\Data\PO071718\
 Data File : PO046844.D
 Signal(s) : Signal #1: ECD1A.CH Signal #2: ECD2B.CH
 Acq On : 18 Jul 2018 00:46
 Operator : SM/SJ
 Sample : J3997-15
 Misc :
 ALS Vial : 40 Sample Multiplier: 1

Instrument :
 ECD_O
 ClientSampleId :
 TP-H-D

Integration File signal 1: autoint1.e
 Integration File signal 2: autoint2.e
 Quant Time: Jul 18 08:34:25 2018
 Quant Method : Z:\pestpcbsrv\HPCHEM1\ECD_O\methods\PO070718.M
 Quant Title : GC EXTRACTABLES
 QLast Update : Mon Jul 09 15:27:34 2018
 Response via : Initial Calibration
 Integrator: ChemStation 6890 Scale Mode: Small noise peaks clipped

Volume Inj. : 2 µl
 Signal #1 Phase : ZB-MR1 Signal #2 Phase: ZB-MR2
 Signal #1 Info : 30Mx0.32mmx 0.50µ Signal #2 Info : 30M x 0.32mm x 0.25µm

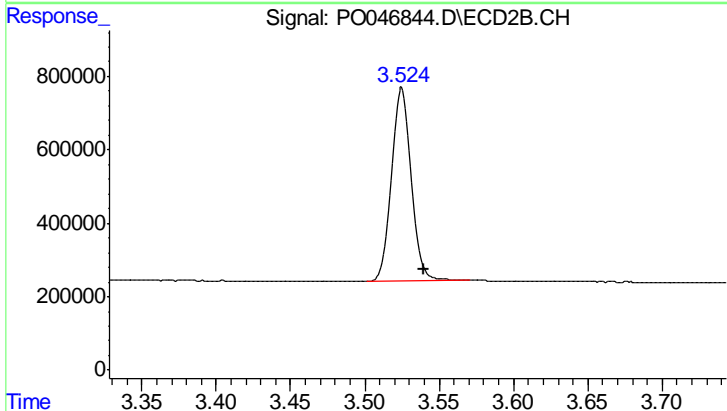




#1 Tetrachloro-m-xylene

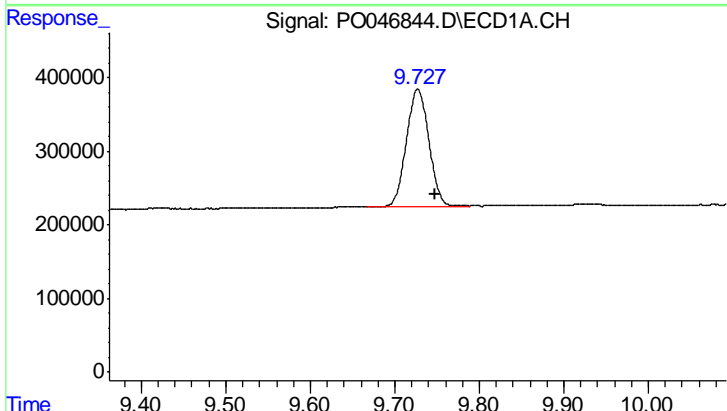
R.T.: 4.201 min
 Delta R.T.: -0.012 min
 Response: 4452692
 Conc: 18.63 ng/ml

Instrument :
 ECD_O
 ClientSampleId :
 TP-H-D



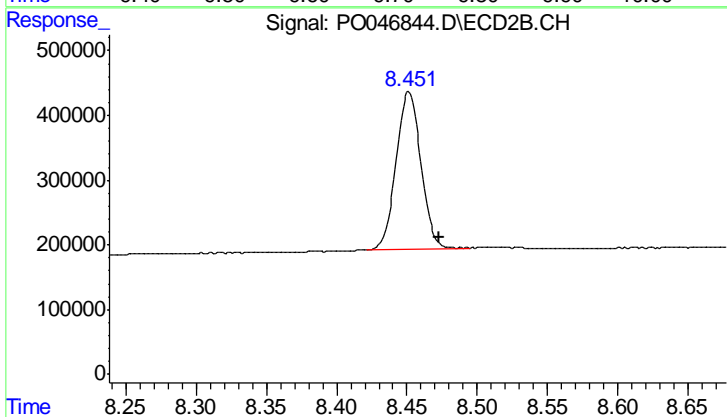
#1 Tetrachloro-m-xylene

R.T.: 3.525 min
 Delta R.T.: -0.015 min
 Response: 4968898
 Conc: 23.39 ng/ml



#2 Decachlorobiphenyl

R.T.: 9.727 min
 Delta R.T.: -0.021 min
 Response: 2941395
 Conc: 15.43 ng/ml



#2 Decachlorobiphenyl

R.T.: 8.451 min
 Delta R.T.: -0.022 min
 Response: 2984821
 Conc: 15.39 ng/ml