

Data Path : Z:\pestpcbsrv\HPCHEM1\ECD\_0\Data\P0071720\  
 Data File : P0069794.D  
 Signal(s) : Signal #1: ECD1A.CH Signal #2: ECD2B.CH  
 Acq On : 17 Jul 2020 19:54  
 Operator : DD\AJ  
 Sample : PB130290BL  
 Misc :  
 ALS Vial : 28 Sample Multiplier: 1

Instrument :  
 ECD\_0  
 ClientSampleId :

Integration File signal 1: autoint1.e  
 Integration File signal 2: autoint2.e  
 Quant Time: Jul 18 00:39:44 2020  
 Quant Method : Z:\pestpcbsrv\HPCHEM1\ECD\_0\methods\P0070820.M  
 Quant Title : GC EXTRACTABLES  
 QLast Update : Wed Jul 08 16:12:41 2020  
 Response via : Initial Calibration  
 Integrator: ChemStation 6890 Scale Mode: Small noise peaks clipped

Volume Inj. : 2 µl  
 Signal #1 Phase : ZB-MR1 Signal #2 Phase: ZB-MR2  
 Signal #1 Info : 30Mx0.32mmx 0.50µ Signal #2 Info : 30M x 0.32mm x 0.25µm

Compound	RT#1	RT#2	Resp#1	Resp#2	ng/ml	ng/ml
-----						
System Monitoring Compounds						
1) SA Tetrachlo...	4.390	3.564	1041136	1077205	27.886	27.068
2) SA Decachlor...	10.044	8.770	1061322	994859	17.640	17.529

Target Compounds

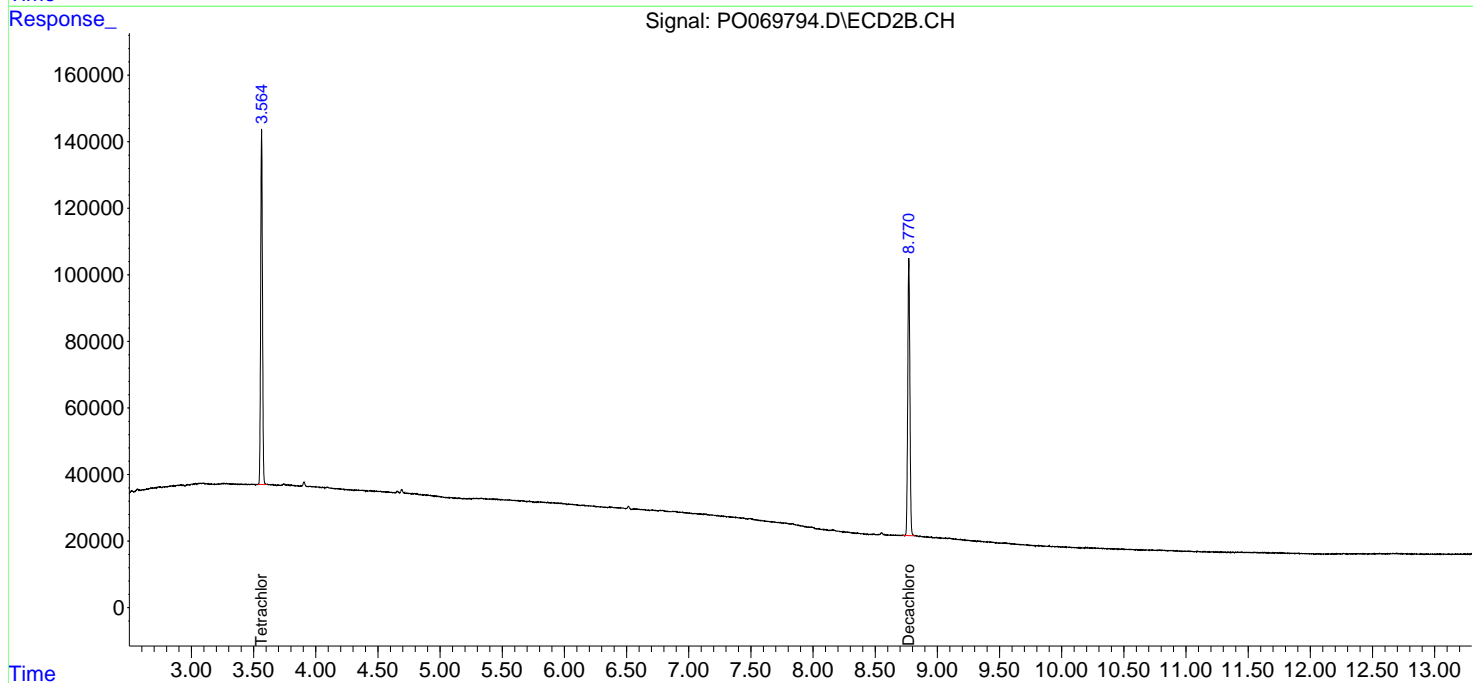
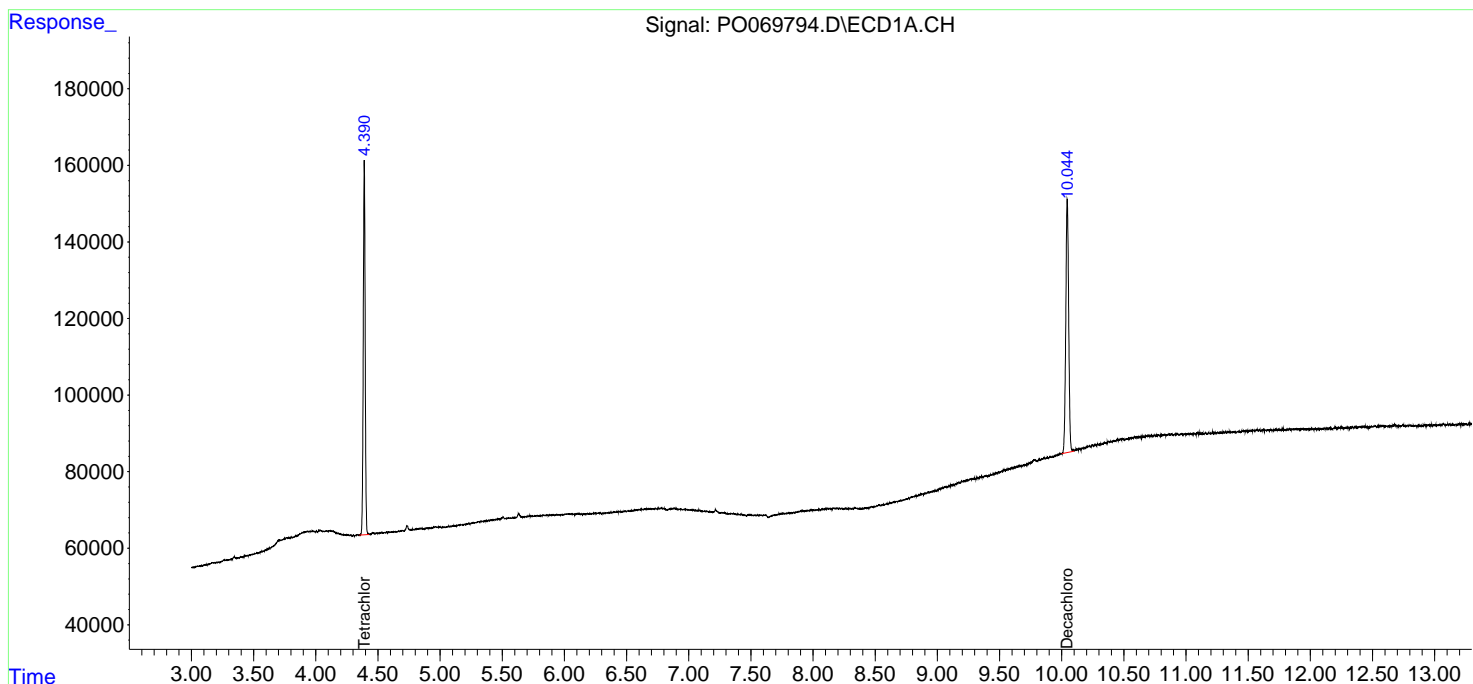
(f)=RT Delta > 1/2 Window (#)=Amounts differ by > 25% (m)=manual int.

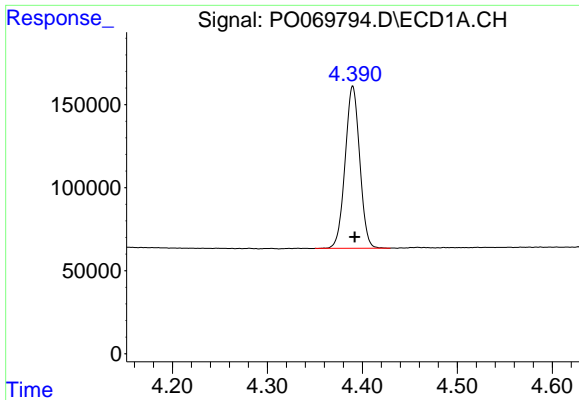
Data Path : Z:\pestpcbsrv\HPCHEM1\ECD\_0\Data\P0071720\  
 Data File : P0069794.D  
 Signal(s) : Signal #1: ECD1A.CH Signal #2: ECD2B.CH  
 Acq On : 17 Jul 2020 19:54  
 Operator : DD\AJ  
 Sample : PB130290BL  
 Misc :  
 ALS Vial : 28 Sample Multiplier: 1

Instrument :  
 ECD\_O  
 ClientSampled :

Integration File signal 1: autoint1.e  
 Integration File signal 2: autoint2.e  
 Quant Time: Jul 18 00:39:44 2020  
 Quant Method : Z:\pestpcbsrv\HPCHEM1\ECD\_0\methods\P0070820.M  
 Quant Title : GC EXTRACTABLES  
 QLast Update : Wed Jul 08 16:12:41 2020  
 Response via : Initial Calibration  
 Integrator: ChemStation 6890 Scale Mode: Small noise peaks clipped

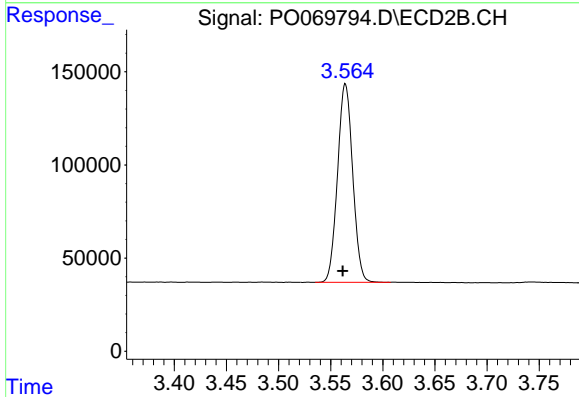
Volume Inj. : 2 µl  
 Signal #1 Phase : ZB-MR1 Signal #2 Phase: ZB-MR2  
 Signal #1 Info : 30Mx0.32mmx 0.50µ Signal #2 Info : 30M x 0.32mm x 0.25µm



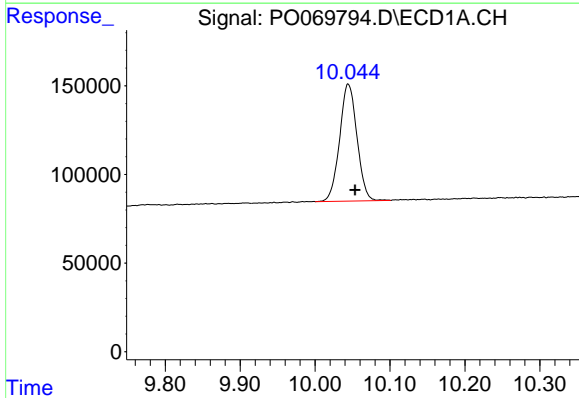


#1 Tetrachloro-m-xylene  
R.T.: 4.390 min  
Delta R.T.: -0.002 min  
Response: 1041136  
Conc: 27.89 ng/ml

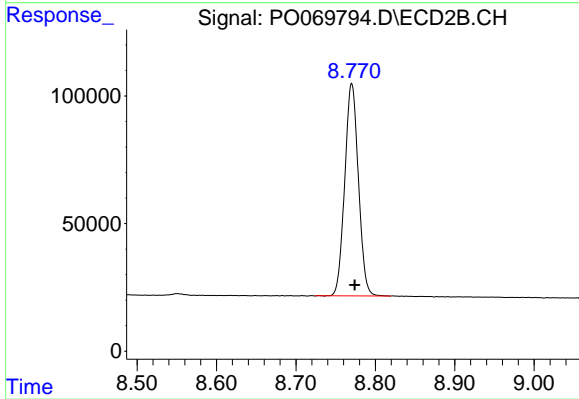
Instrument :  
ECD\_O  
ClientSampleId :



#1 Tetrachloro-m-xylene  
R.T.: 3.564 min  
Delta R.T.: 0.002 min  
Response: 1077205  
Conc: 27.07 ng/ml



#2 Decachlorobiphenyl  
R.T.: 10.044 min  
Delta R.T.: -0.009 min  
Response: 1061322  
Conc: 17.64 ng/ml



#2 Decachlorobiphenyl  
R.T.: 8.770 min  
Delta R.T.: -0.004 min  
Response: 994859  
Conc: 17.53 ng/ml