

Data Path : Z:\pestpcbsrv\HPCHEM1\ECD\_0\Data\P0071724\  
 Data File : PO104788.D  
 Signal(s) : Signal #1: ECD1A.ch Signal #2: ECD2B.ch  
 Acq On : 17 Jul 2024 10:18  
 Operator : YP/AJ  
 Sample : AR1248CCC500  
 Misc :  
 ALS Vial : 5 Sample Multiplier: 1

Instrument :  
 ECD\_0  
 ClientSampleId :

Integration File signal 1: autoint1.e  
 Integration File signal 2: autoint2.e  
 Quant Time: Jul 17 12:16:47 2024  
 Quant Method : Z:\pestpcbsrv\HPCHEM1\ECD\_0\methods\P0070224.M  
 Quant Title : GC EXTRACTABLES  
 QLast Update : Tue Jul 02 16:29:20 2024  
 Response via : Initial Calibration  
 Integrator: ChemStation

Volume Inj. : 2 µl  
 Signal #1 Phase : ZB-MR1 Signal #2 Phase: ZB-MR2  
 Signal #1 Info : 30Mx0.32mmx 0.50µ Signal #2 Info : 30M x 0.32mm x 0.25µm

Compound	RT#1	RT#2	Resp#1	Resp#2	ng/ml	ng/ml
System Monitoring Compounds						
1) SA Tetrachlo...	4.428	3.542	461.8E6	176.1E6	51.579	53.961
2) SA Decachlor...	10.218	8.441	296.6E6	99237804	48.370	47.321
Target Compounds						
3) L1 AR-1016-1	5.598	4.599	91349847	36613302	307.031	322.836
4) L1 AR-1016-2	5.621	4.617	105.2E6	36631257	252.728	235.762
5) L1 AR-1016-3	5.683	4.790	50962934	24295977	199.821	294.335 #
6) L1 AR-1016-4	5.782	4.831	60758074	48644921	283.489	748.339 #
7) L1 AR-1016-5	6.079	5.040	139.8E6	63850354	669.574	722.392
8) L2 AR-1221-1	4.636	3.748	2761335	460367	23.205	11.334 #
9) L2 AR-1221-2	4.734	3.834	10447942	3501596	118.601	108.676
10) L2 AR-1221-3	4.798	3.908	10892248	3226151	43.709	33.806
11) L3 AR-1232-1	4.798	3.908	10892248	3226151	52.915	40.969
12) L3 AR-1232-2	5.329	4.617	53392034	36631257	470.475	503.250
13) L3 AR-1232-3	5.621	4.790	105.2E6	24295977	540.498	619.193
14) L3 AR-1232-4	5.782	4.871	60758074	52167114	613.160	1465.016 #
15) L3 AR-1232-5	5.873	5.040	129.1E6	63850354	1647.709	1591.871
16) L4 AR-1242-1	5.598	4.599	91349847	36613302	385.410	410.608
17) L4 AR-1242-2	5.621	4.617	105.2E6	36631257	322.335	301.586
18) L4 AR-1242-3	5.683	4.790	50962934	24295977	248.223	371.738 #
19) L4 AR-1242-4	5.782	4.871	60758074	52167114	355.141	789.103 #
20) L4 AR-1242-5	6.524	5.385	159.9E6	86796685	890.908	1039.042
21) L5 AR-1248-1	5.598	4.599	91349847	36613302	500.710	527.734
22) L5 AR-1248-2	5.873	4.831	129.1E6	48644921	499.749	515.004
23) L5 AR-1248-3	6.079	4.871	139.8E6	52167114	509.226	528.970
24) L5 AR-1248-4	6.485	5.040	163.2E6	63850354	536.003	558.495
25) L5 AR-1248-5	6.524	5.424	159.9E6	62303213	543.670	557.976
26) L6 AR-1254-1	6.457	5.385	126.8E6	86796685	412.122	514.919
27) L6 AR-1254-2	6.682	5.530	149.5E6	27087614	334.317	182.146 #
28) L6 AR-1254-3	7.048	5.927	80699771	38231190	177.400	165.984
29) L6 AR-1254-4	7.335	6.152	55087930	25502934	163.374	178.754
30) L6 AR-1254-5	7.759	6.565	24375496	8612660	65.271	42.920 #
31) L7 AR-1260-1	7.216	6.045	9861193	4737589	27.316	29.586
32) L7 AR-1260-2	7.470	6.241	8018450	3423729	19.005	17.822
33) L7 AR-1260-3	7.823	6.391	13261434	5320838	44.887	29.916 #
34) L7 AR-1260-4	8.051	6.859	28877473	628569	81.507	4.692 #
35) L7 AR-1260-5	8.388	7.099	19789518	1772446	30.363	5.791 #
36) L8 AR-1262-1	7.759	6.565	24375496	8612660	78.963	76.081
37) L8 AR-1262-2	8.388	6.859	19789518	628569	25.010	3.403 #
38) L8 AR-1262-3	8.679	7.379	3257954	1159246	6.048	8.306 #
39) L8 AR-1262-4	8.777	7.441	6117692	2877180	15.009	11.161 #
40) L8 AR-1262-5	9.451	7.929	4391590	604035	15.726	5.296 #
41) L9 AR-1268-1	8.679	7.379	3257954	1159246	3.738	3.037

Data Path : Z:\pestpcbsrv\HPCHEM1\ECD\_0\Data\P0071724\  
 Data File : P0104788.D  
 Signal(s) : Signal #1: ECD1A.ch Signal #2: ECD2B.ch  
 Acq On : 17 Jul 2024 10:18  
 Operator : YP/AJ  
 Sample : AR1248CCC500  
 Misc :  
 ALS Vial : 5 Sample Multiplier: 1

Instrument :  
 ECD\_0  
 ClientSampleId :

Integration File signal 1: autoint1.e  
 Integration File signal 2: autoint2.e  
 Quant Time: Jul 17 12:16:47 2024  
 Quant Method : Z:\pestpcbsrv\HPCHEM1\ECD\_0\methods\P0070224.M  
 Quant Title : GC EXTRACTABLES  
 QLast Update : Tue Jul 02 16:29:20 2024  
 Response via : Initial Calibration  
 Integrator: ChemStation

Volume Inj. : 2 µl  
 Signal #1 Phase : ZB-MR1 Signal #2 Phase: ZB-MR2  
 Signal #1 Info : 30Mx0.32mmx 0.50µ Signal #2 Info : 30M x 0.32mm x 0.25µm

	Compound	RT#1	RT#2	Resp#1	Resp#2	ng/ml	ng/ml
42)	L9 AR-1268-2	8.793	7.441	8091276	2877180	10.119	8.448
43)	L9 AR-1268-3	9.018	7.647	4426810	360167	6.664	1.308 #
44)	L9 AR-1268-4	9.451	7.929	4391590	604035	15.375	5.118 #
45)	L9 AR-1268-5	9.885	8.205	1487725	683259	0.706	0.876

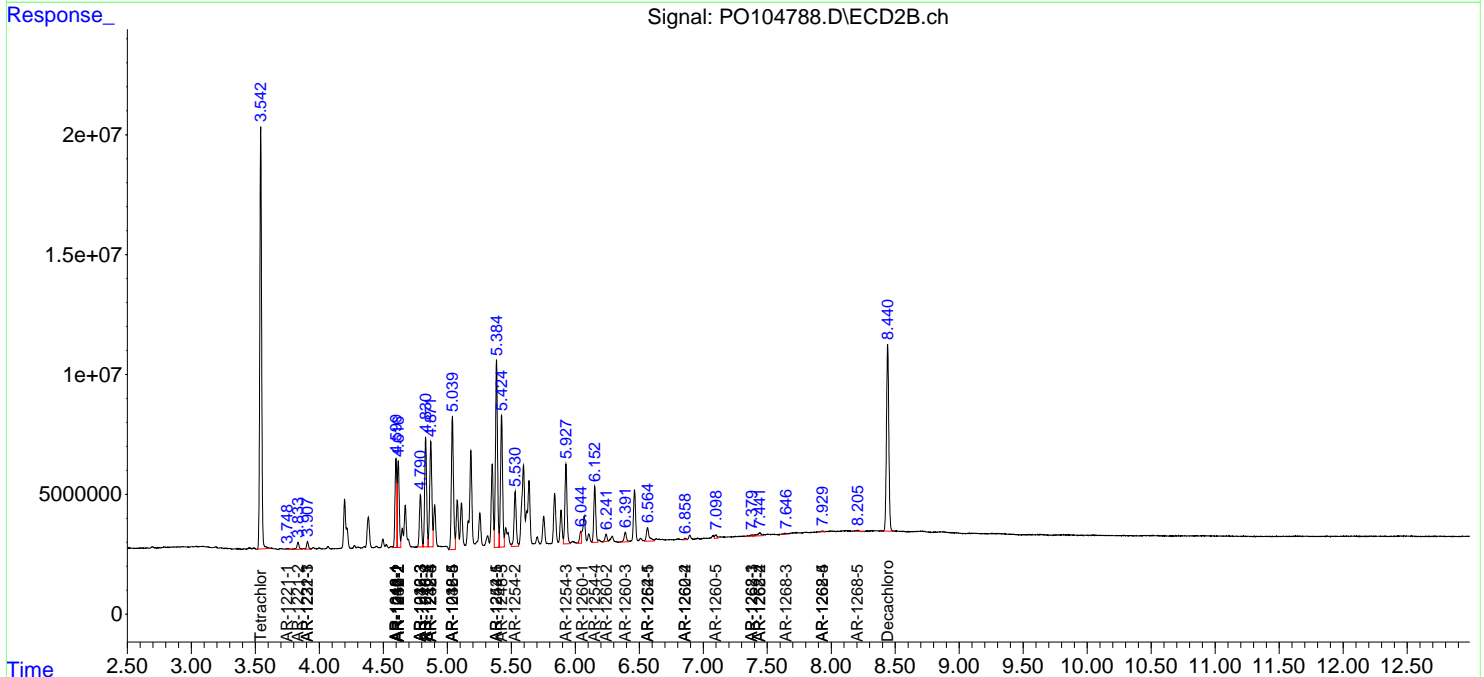
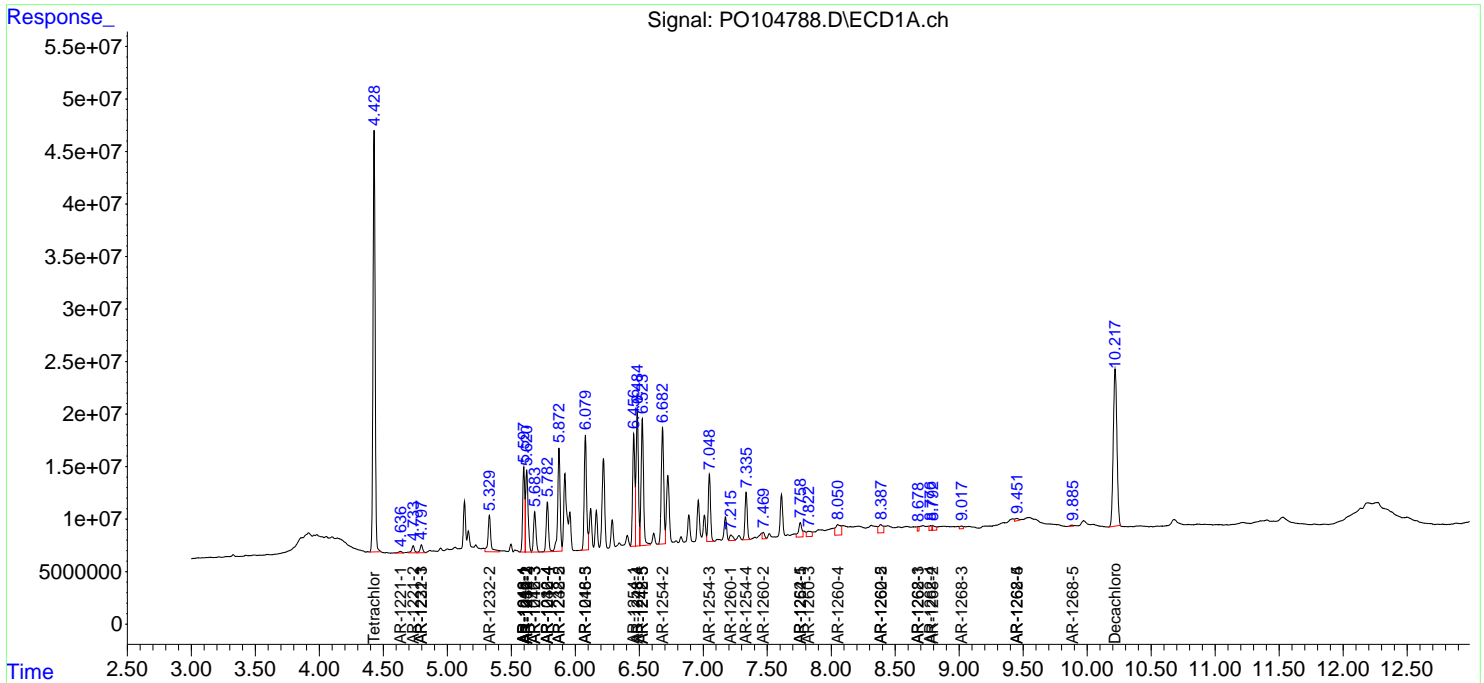
(f)=RT Delta > 1/2 Window (#)=Amounts differ by > 25% (m)=manual int.

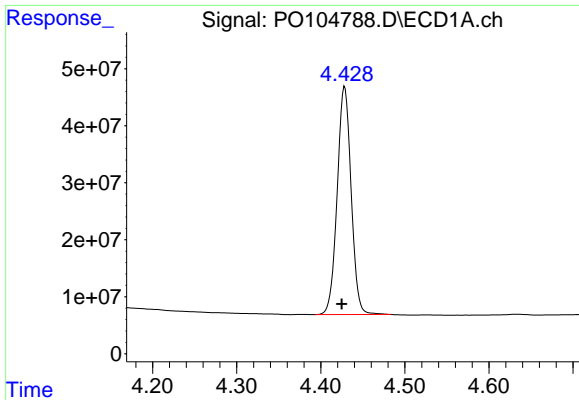
Data Path : Z:\pestpcbsrv\HPCHEM1\ECD\_O\Data\PO071724\  
 Data File : PO104788.D  
 Signal(s) : Signal #1: ECD1A.ch Signal #2: ECD2B.ch  
 Acq On : 17 Jul 2024 10:18  
 Operator : YP/AJ  
 Sample : AR1248CCC500  
 Misc :  
 ALS Vial : 5 Sample Multiplier: 1

Instrument :  
 ECD\_O  
 ClientSampleId :

Integration File signal 1: autoint1.e  
 Integration File signal 2: autoint2.e  
 Quant Time: Jul 17 12:16:47 2024  
 Quant Method : Z:\pestpcbsrv\HPCHEM1\ECD\_O\methods\PO070224.M  
 Quant Title : GC EXTRACTABLES  
 QLast Update : Tue Jul 02 16:29:20 2024  
 Response via : Initial Calibration  
 Integrator: ChemStation

Volume Inj. : 2 µl  
 Signal #1 Phase : ZB-MR1 Signal #2 Phase: ZB-MR2  
 Signal #1 Info : 30Mx0.32mmx 0.50µ Signal #2 Info : 30M x 0.32mm x 0.25µm

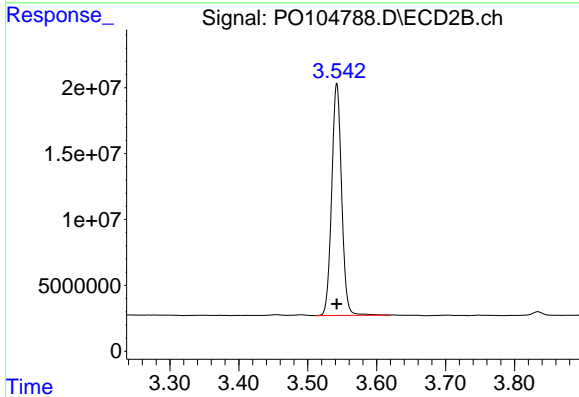




#1 Tetrachloro-m-xylene

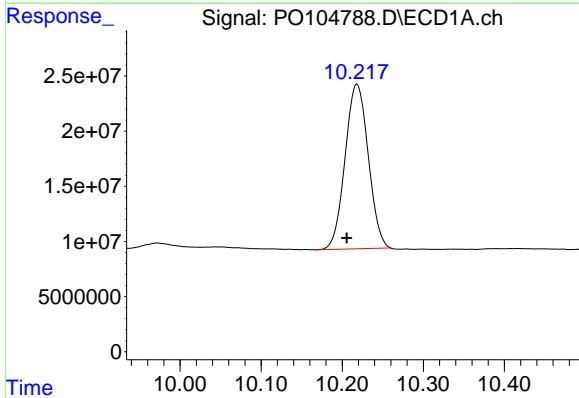
R.T.: 4.428 min  
 Delta R.T.: 0.003 min  
 Response: 461811331  
 Conc: 51.58 ng/ml

Instrument :  
 ECD\_O  
 ClientSampleId :



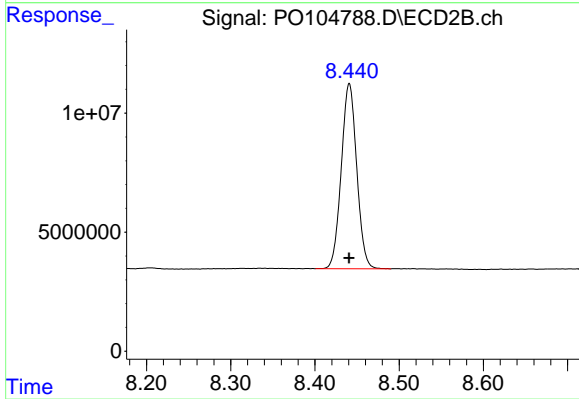
#1 Tetrachloro-m-xylene

R.T.: 3.542 min  
 Delta R.T.: 0.000 min  
 Response: 176052438  
 Conc: 53.96 ng/ml



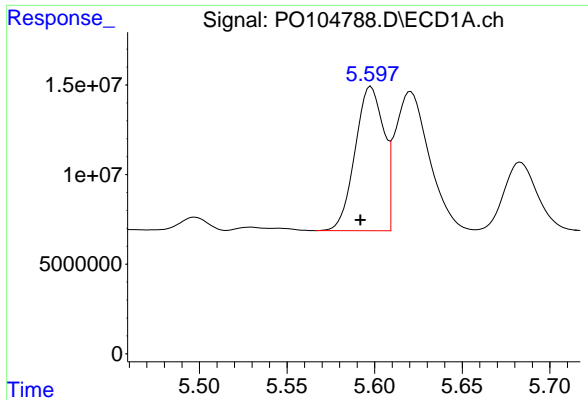
#2 Decachlorobiphenyl

R.T.: 10.218 min  
 Delta R.T.: 0.013 min  
 Response: 296632874  
 Conc: 48.37 ng/ml



#2 Decachlorobiphenyl

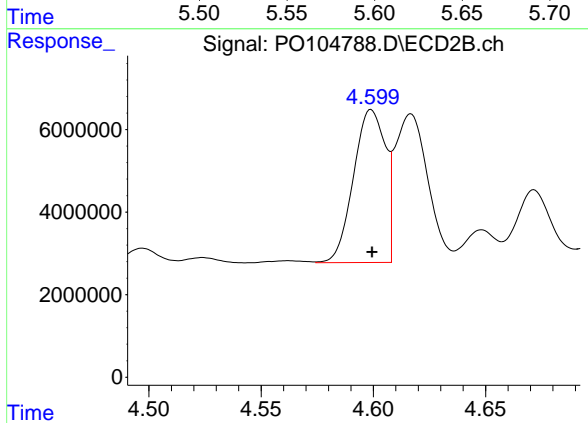
R.T.: 8.441 min  
 Delta R.T.: 0.000 min  
 Response: 99237804  
 Conc: 47.32 ng/ml



#3 AR-1016-1

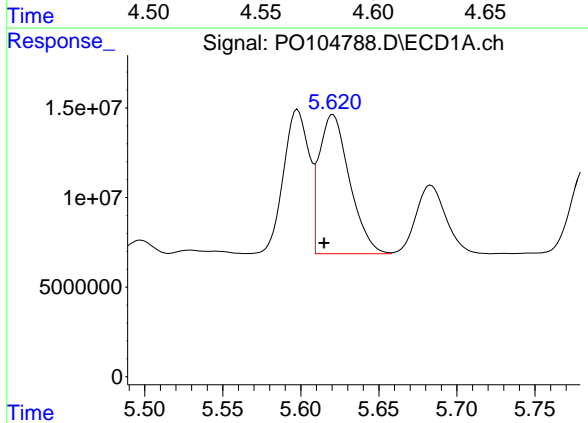
R.T.: 5.598 min  
 Delta R.T.: 0.006 min  
 Response: 91349847  
 Conc: 307.03 ng/ml

Instrument :  
 ECD\_O  
 ClientSampleId :



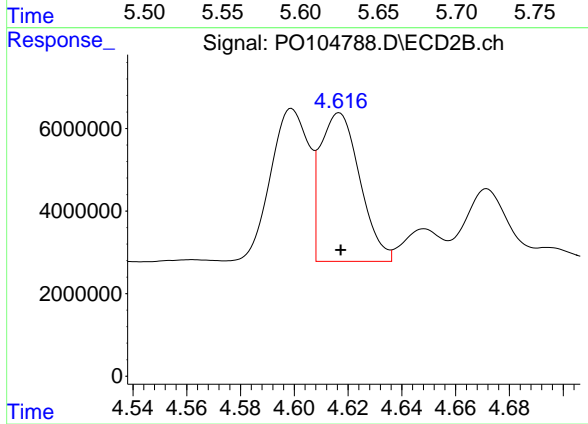
#3 AR-1016-1

R.T.: 4.599 min  
 Delta R.T.: 0.000 min  
 Response: 36613302  
 Conc: 322.84 ng/ml



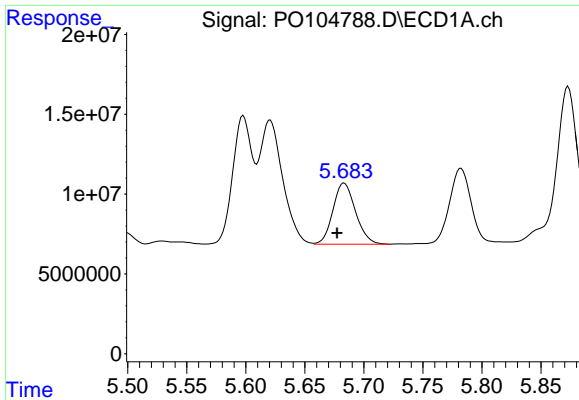
#4 AR-1016-2

R.T.: 5.621 min  
 Delta R.T.: 0.006 min  
 Response: 105209651  
 Conc: 252.73 ng/ml



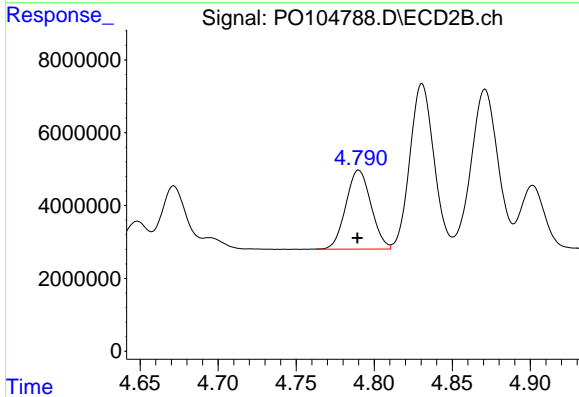
#4 AR-1016-2

R.T.: 4.617 min  
 Delta R.T.: 0.000 min  
 Response: 36631257  
 Conc: 235.76 ng/ml

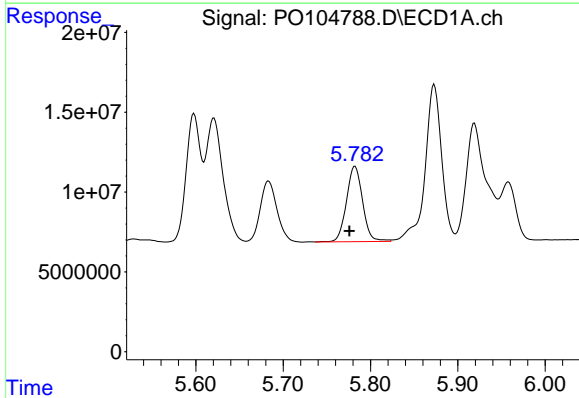


#5 AR-1016-3  
 R.T.: 5.683 min  
 Delta R.T.: 0.006 min  
 Response: 50962934  
 Conc: 199.82 ng/ml

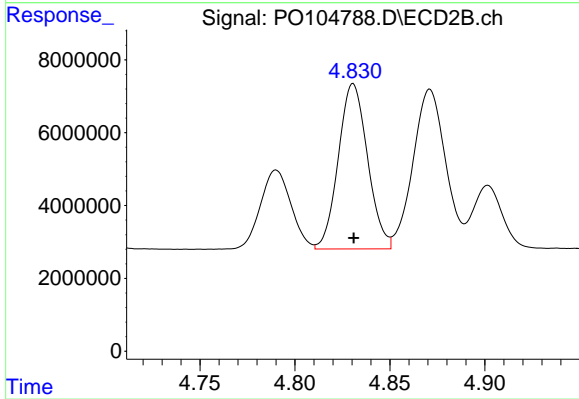
Instrument :  
 ECD\_O  
 ClientSampleId :



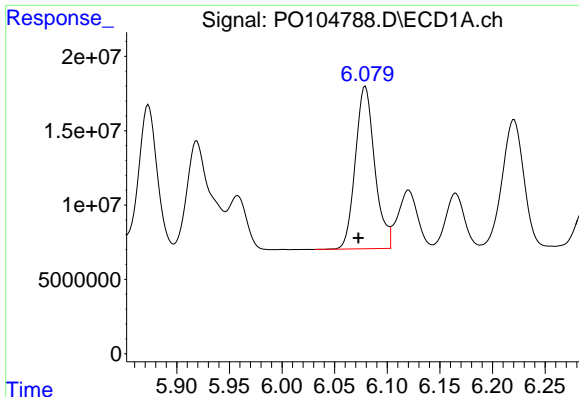
#5 AR-1016-3  
 R.T.: 4.790 min  
 Delta R.T.: 0.000 min  
 Response: 24295977  
 Conc: 294.34 ng/ml



#6 AR-1016-4  
 R.T.: 5.782 min  
 Delta R.T.: 0.006 min  
 Response: 60758074  
 Conc: 283.49 ng/ml



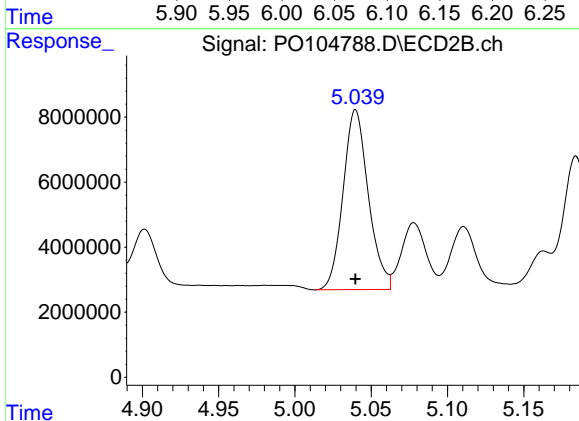
#6 AR-1016-4  
 R.T.: 4.831 min  
 Delta R.T.: 0.000 min  
 Response: 48644921  
 Conc: 748.34 ng/ml



#7 AR-1016-5

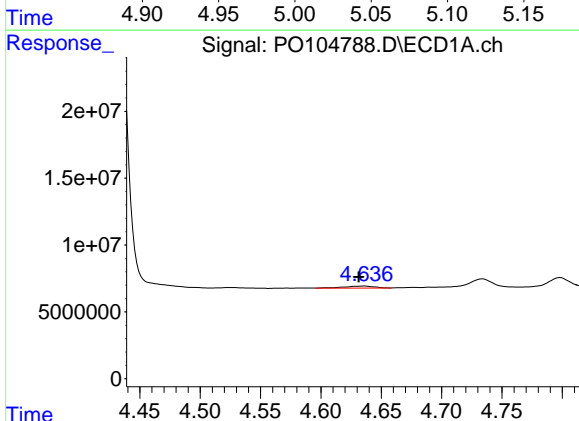
R.T.: 6.079 min  
 Delta R.T.: 0.007 min  
 Response: 139843691  
 Conc: 669.57 ng/ml

Instrument :  
 ECD\_O  
 ClientSampleId :



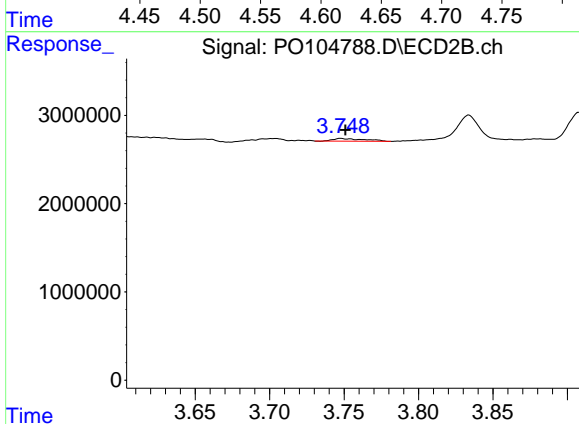
#7 AR-1016-5

R.T.: 5.040 min  
 Delta R.T.: 0.000 min  
 Response: 63850354  
 Conc: 722.39 ng/ml



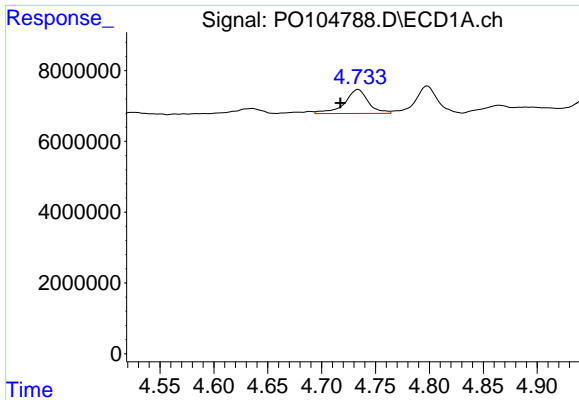
#8 AR-1221-1

R.T.: 4.636 min  
 Delta R.T.: 0.005 min  
 Response: 2761335  
 Conc: 23.20 ng/ml



#8 AR-1221-1

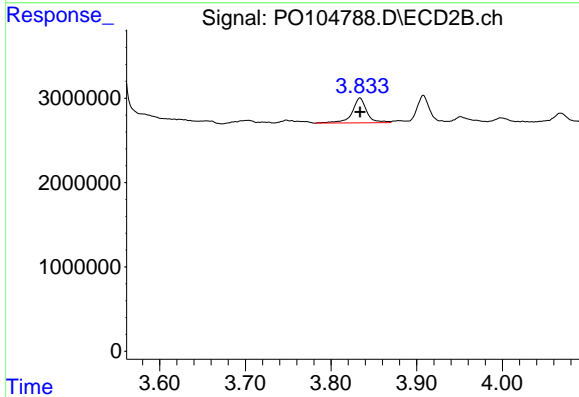
R.T.: 3.748 min  
 Delta R.T.: -0.003 min  
 Response: 460367  
 Conc: 11.33 ng/ml



#9 AR-1221-2

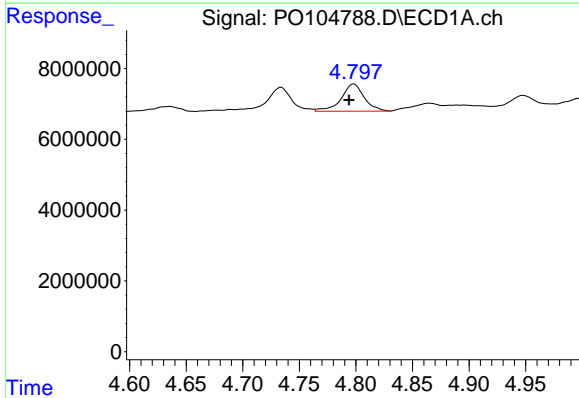
R.T.: 4.734 min  
 Delta R.T.: 0.017 min  
 Response: 10447942  
 Conc: 118.60 ng/ml

Instrument :  
 ECD\_O  
 ClientSampleId :



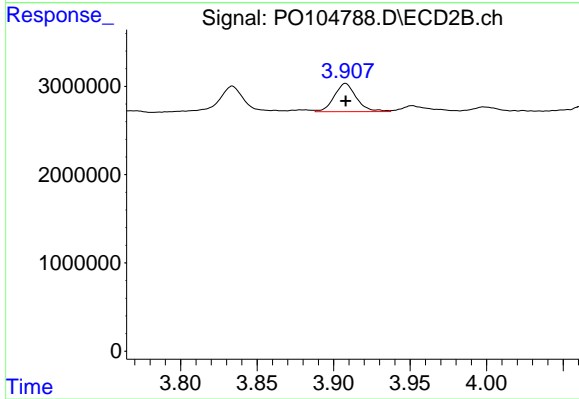
#9 AR-1221-2

R.T.: 3.834 min  
 Delta R.T.: 0.000 min  
 Response: 3501596  
 Conc: 108.68 ng/ml



#10 AR-1221-3

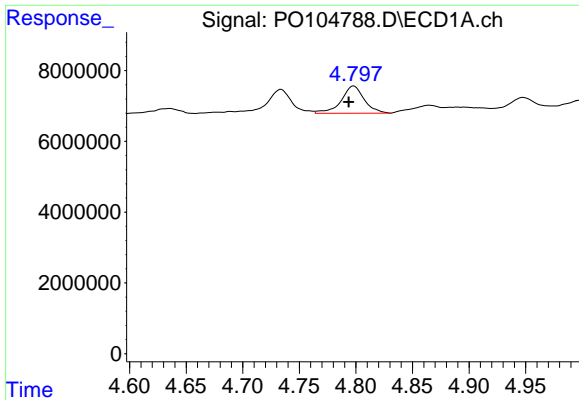
R.T.: 4.798 min  
 Delta R.T.: 0.004 min  
 Response: 10892248  
 Conc: 43.71 ng/ml



#10 AR-1221-3

R.T.: 3.908 min  
 Delta R.T.: 0.000 min  
 Response: 3226151  
 Conc: 33.81 ng/ml

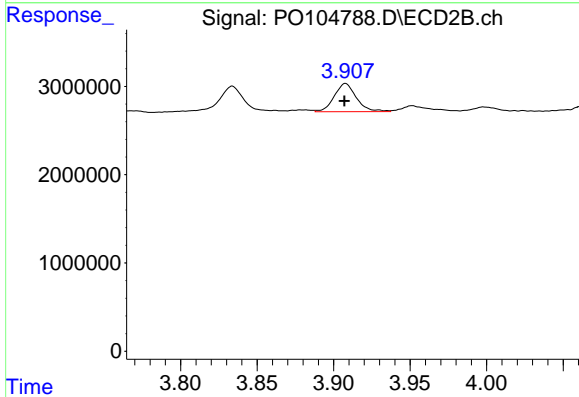




#11 AR-1232-1

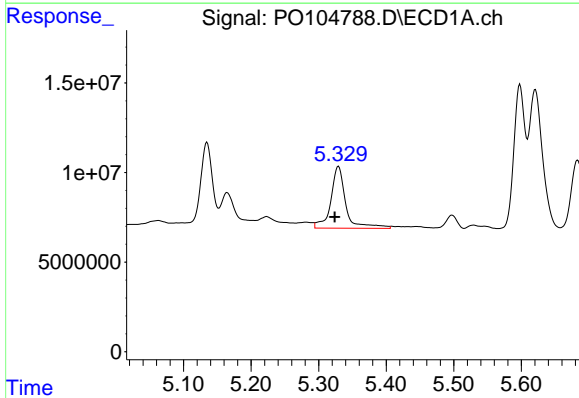
R.T.: 4.798 min  
 Delta R.T.: 0.004 min  
 Response: 10892248  
 Conc: 52.91 ng/ml

Instrument :  
 ECD\_O  
 ClientSampleId :



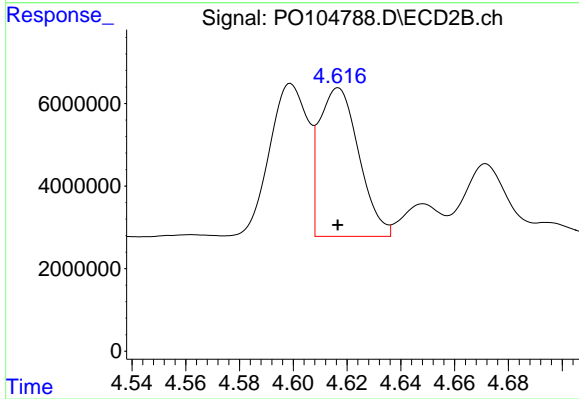
#11 AR-1232-1

R.T.: 3.908 min  
 Delta R.T.: 0.000 min  
 Response: 3226151  
 Conc: 40.97 ng/ml



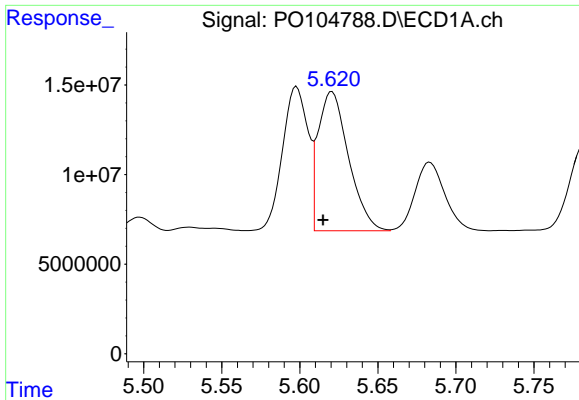
#12 AR-1232-2

R.T.: 5.329 min  
 Delta R.T.: 0.005 min  
 Response: 53392034  
 Conc: 470.47 ng/ml



#12 AR-1232-2

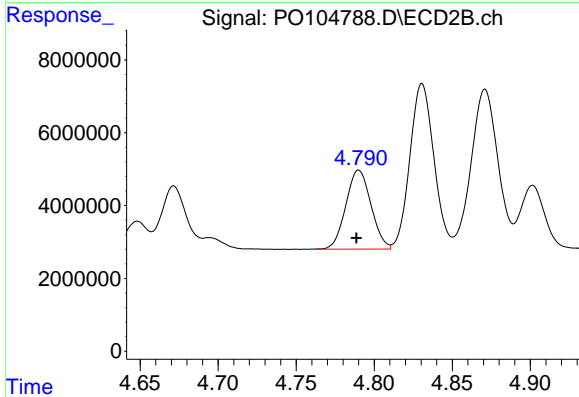
R.T.: 4.617 min  
 Delta R.T.: 0.000 min  
 Response: 36631257  
 Conc: 503.25 ng/ml



#13 AR-1232-3

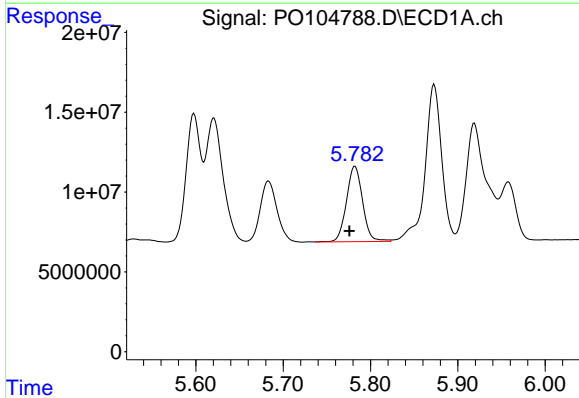
R.T.: 5.621 min  
 Delta R.T.: 0.006 min  
 Response: 105209651  
 Conc: 540.50 ng/ml

Instrument :  
 ECD\_O  
 ClientSampleId :



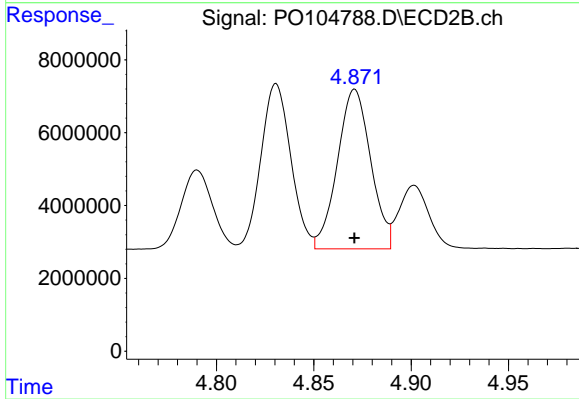
#13 AR-1232-3

R.T.: 4.790 min  
 Delta R.T.: 0.002 min  
 Response: 24295977  
 Conc: 619.19 ng/ml



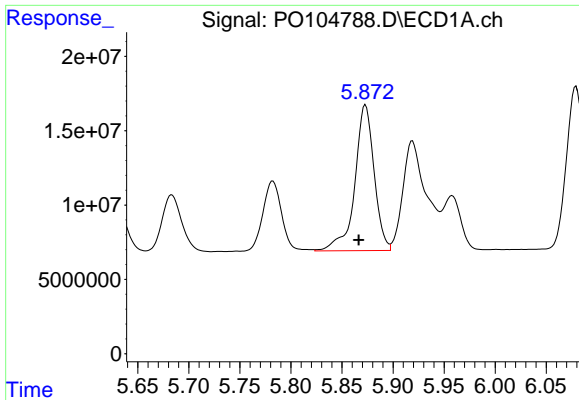
#14 AR-1232-4

R.T.: 5.782 min  
 Delta R.T.: 0.006 min  
 Response: 60758074  
 Conc: 613.16 ng/ml



#14 AR-1232-4

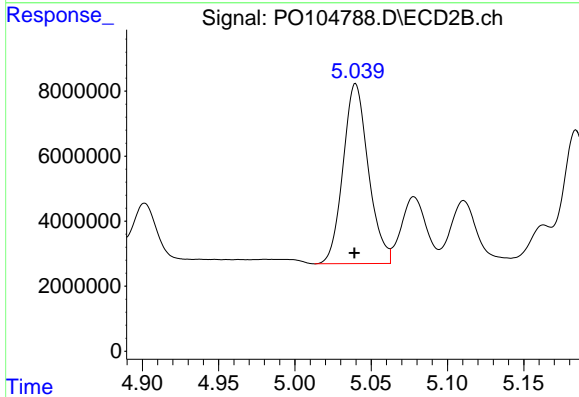
R.T.: 4.871 min  
 Delta R.T.: 0.000 min  
 Response: 52167114  
 Conc: 1465.02 ng/ml



#15 AR-1232-5

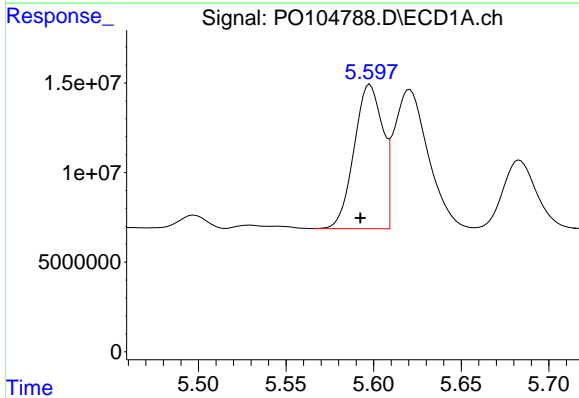
R.T.: 5.873 min  
 Delta R.T.: 0.007 min  
 Response: 129070151  
 Conc: 1647.71 ng/ml

Instrument :  
 ECD\_O  
 ClientSampleId :



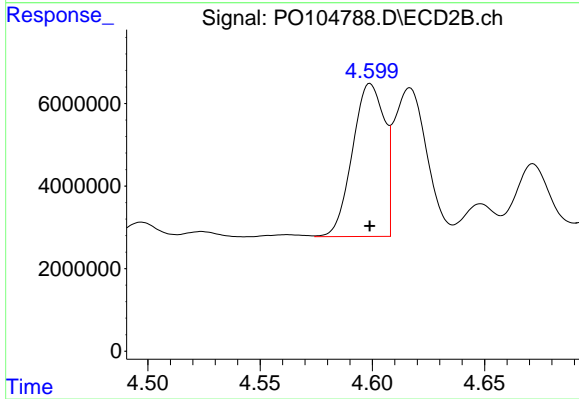
#15 AR-1232-5

R.T.: 5.040 min  
 Delta R.T.: 0.000 min  
 Response: 63850354  
 Conc: 1591.87 ng/ml



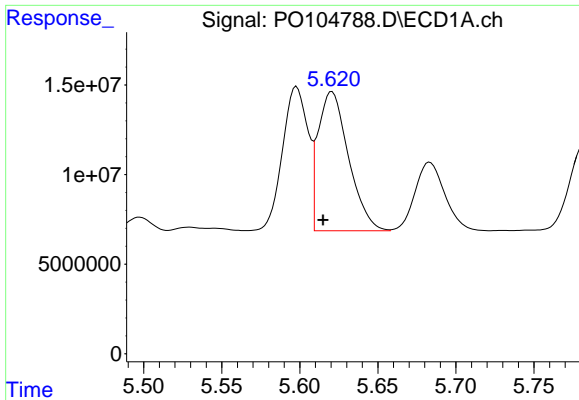
#16 AR-1242-1

R.T.: 5.598 min  
 Delta R.T.: 0.006 min  
 Response: 91349847  
 Conc: 385.41 ng/ml



#16 AR-1242-1

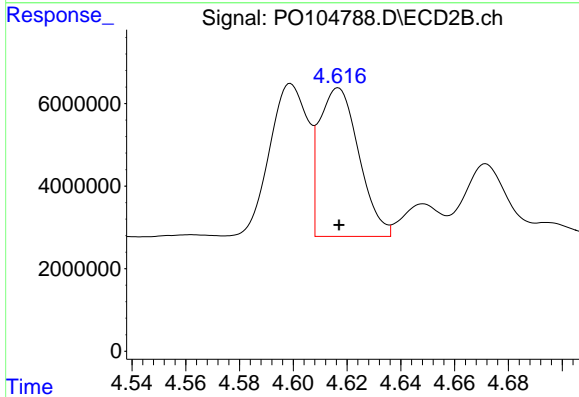
R.T.: 4.599 min  
 Delta R.T.: 0.000 min  
 Response: 36613302  
 Conc: 410.61 ng/ml



#17 AR-1242-2

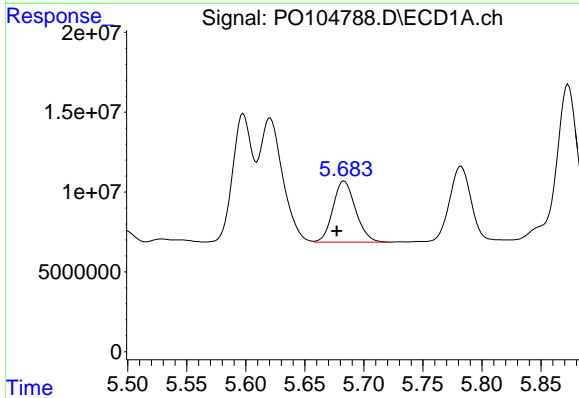
R.T.: 5.621 min  
 Delta R.T.: 0.006 min  
 Response: 105209651  
 Conc: 322.33 ng/ml

Instrument :  
 ECD\_O  
 ClientSampleId :



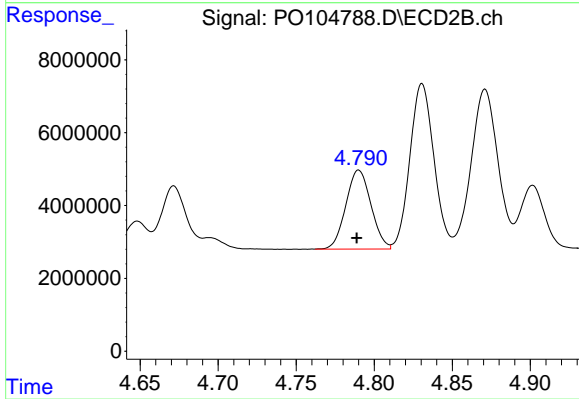
#17 AR-1242-2

R.T.: 4.617 min  
 Delta R.T.: 0.000 min  
 Response: 36631257  
 Conc: 301.59 ng/ml



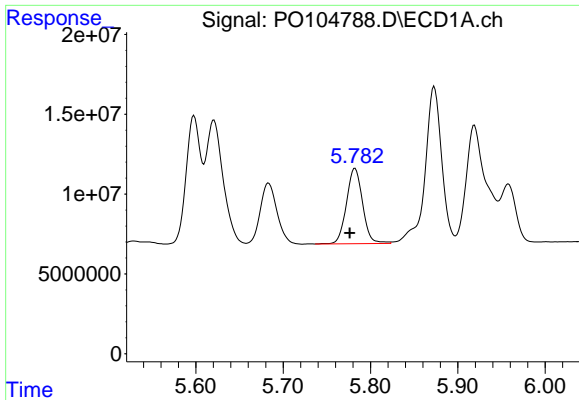
#18 AR-1242-3

R.T.: 5.683 min  
 Delta R.T.: 0.006 min  
 Response: 50962934  
 Conc: 248.22 ng/ml



#18 AR-1242-3

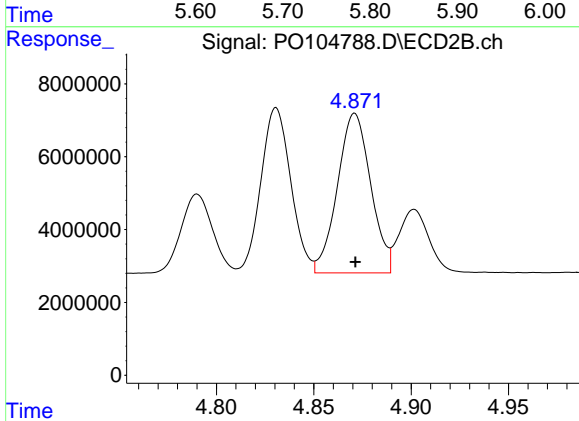
R.T.: 4.790 min  
 Delta R.T.: 0.001 min  
 Response: 24295977  
 Conc: 371.74 ng/ml



#19 AR-1242-4

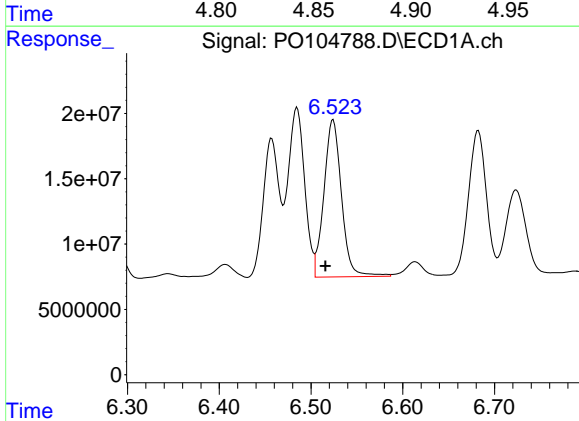
R.T.: 5.782 min  
 Delta R.T.: 0.006 min  
 Response: 60758074  
 Conc: 355.14 ng/ml

Instrument :  
 ECD\_O  
 ClientSampleId :



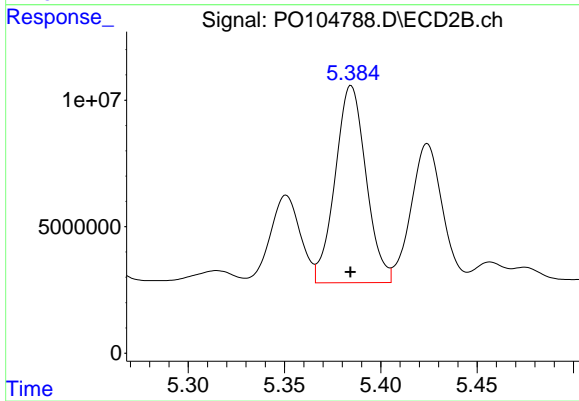
#19 AR-1242-4

R.T.: 4.871 min  
 Delta R.T.: 0.000 min  
 Response: 52167114  
 Conc: 789.10 ng/ml



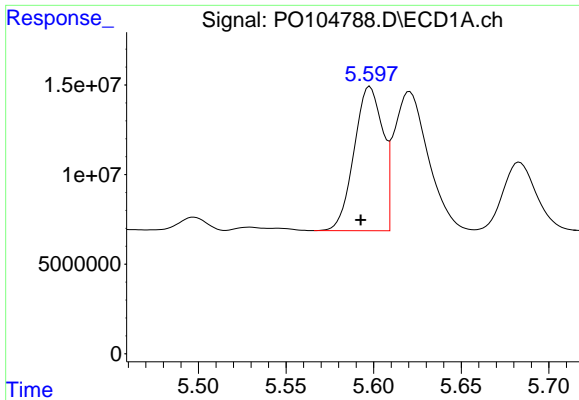
#20 AR-1242-5

R.T.: 6.524 min  
 Delta R.T.: 0.008 min  
 Response: 159944976  
 Conc: 890.91 ng/ml



#20 AR-1242-5

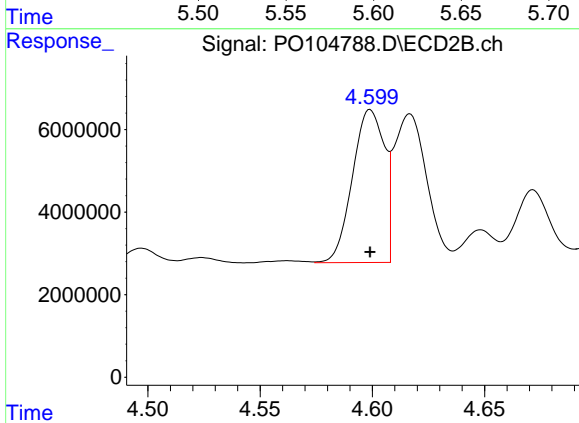
R.T.: 5.385 min  
 Delta R.T.: 0.000 min  
 Response: 86796685  
 Conc: 1039.04 ng/ml



#21 AR-1248-1

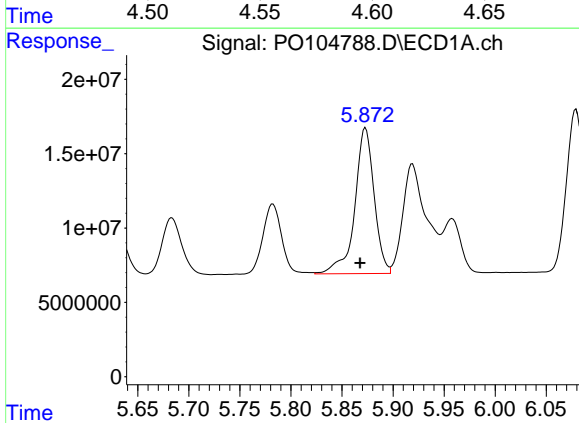
R.T.: 5.598 min  
 Delta R.T.: 0.005 min  
 Response: 91349847  
 Conc: 500.71 ng/ml

Instrument :  
 ECD\_O  
 ClientSampleId :



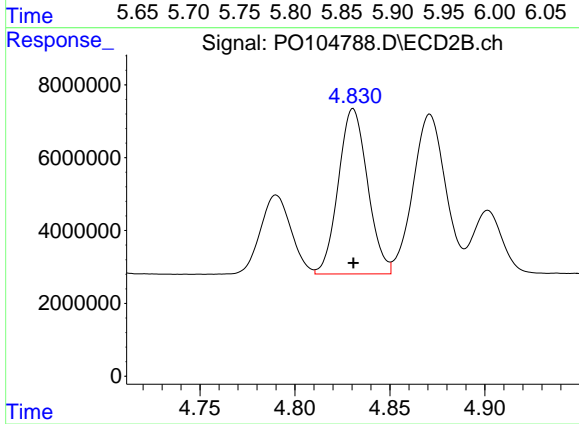
#21 AR-1248-1

R.T.: 4.599 min  
 Delta R.T.: 0.000 min  
 Response: 36613302  
 Conc: 527.73 ng/ml



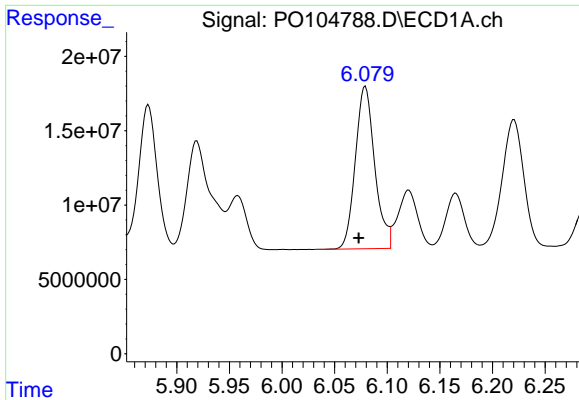
#22 AR-1248-2

R.T.: 5.873 min  
 Delta R.T.: 0.005 min  
 Response: 129070151  
 Conc: 499.75 ng/ml



#22 AR-1248-2

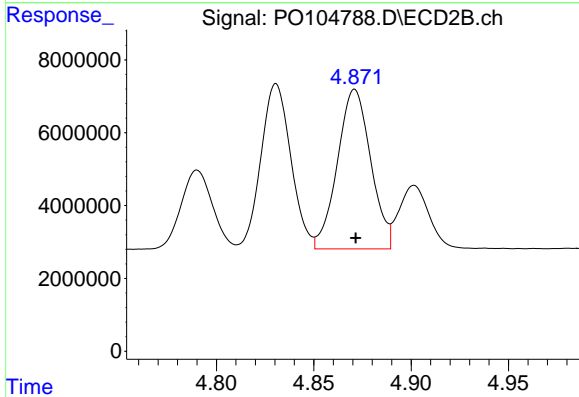
R.T.: 4.831 min  
 Delta R.T.: 0.000 min  
 Response: 48644921  
 Conc: 515.00 ng/ml



#23 AR-1248-3

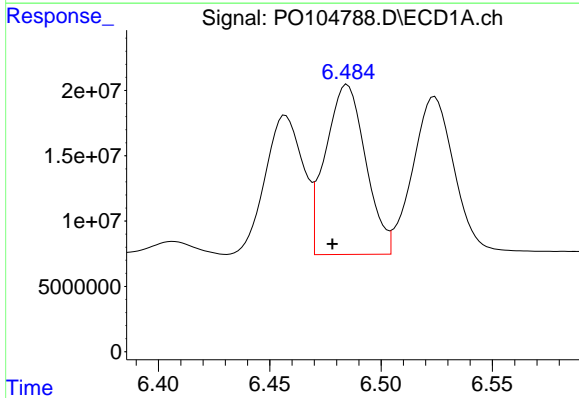
R.T.: 6.079 min  
 Delta R.T.: 0.006 min  
 Response: 139843691  
 Conc: 509.23 ng/ml

Instrument :  
 ECD\_O  
 ClientSampleId :



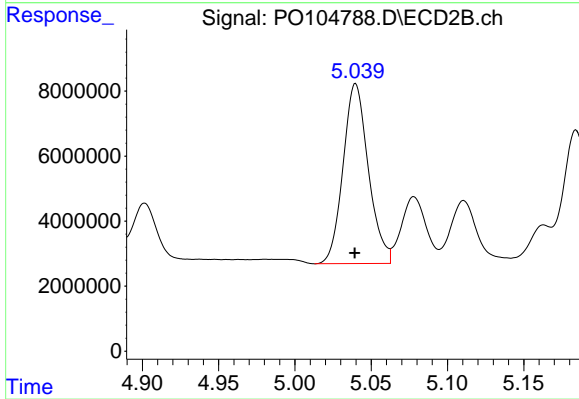
#23 AR-1248-3

R.T.: 4.871 min  
 Delta R.T.: 0.000 min  
 Response: 52167114  
 Conc: 528.97 ng/ml



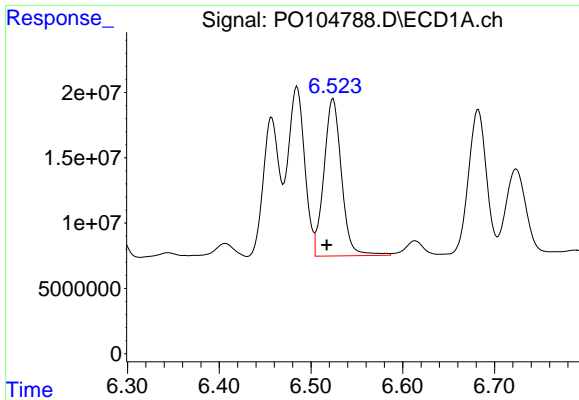
#24 AR-1248-4

R.T.: 6.485 min  
 Delta R.T.: 0.007 min  
 Response: 163186444  
 Conc: 536.00 ng/ml



#24 AR-1248-4

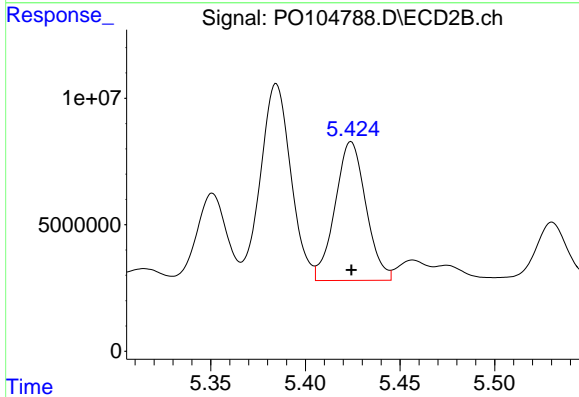
R.T.: 5.040 min  
 Delta R.T.: 0.000 min  
 Response: 63850354  
 Conc: 558.49 ng/ml



#25 AR-1248-5

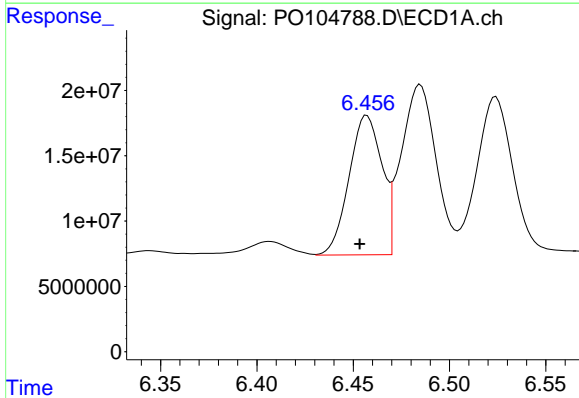
R.T.: 6.524 min  
 Delta R.T.: 0.007 min  
 Response: 159944976  
 Conc: 543.67 ng/ml

Instrument :  
 ECD\_O  
 ClientSampleId :



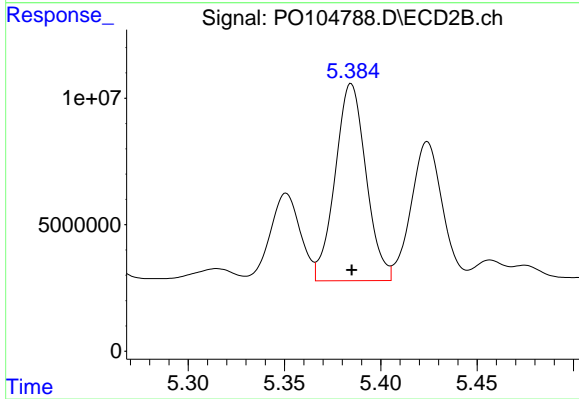
#25 AR-1248-5

R.T.: 5.424 min  
 Delta R.T.: 0.000 min  
 Response: 62303213  
 Conc: 557.98 ng/ml



#26 AR-1254-1

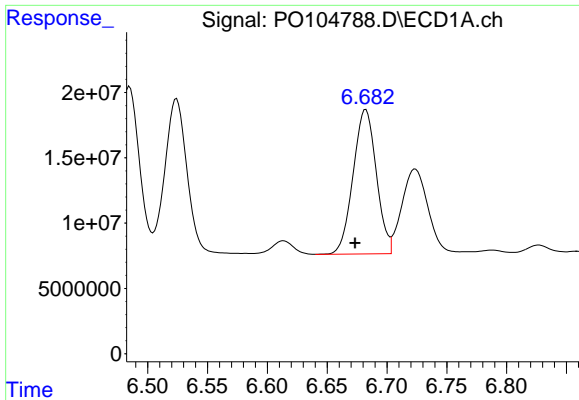
R.T.: 6.457 min  
 Delta R.T.: 0.004 min  
 Response: 126807067  
 Conc: 412.12 ng/ml



#26 AR-1254-1

R.T.: 5.385 min  
 Delta R.T.: 0.000 min  
 Response: 86796685  
 Conc: 514.92 ng/ml

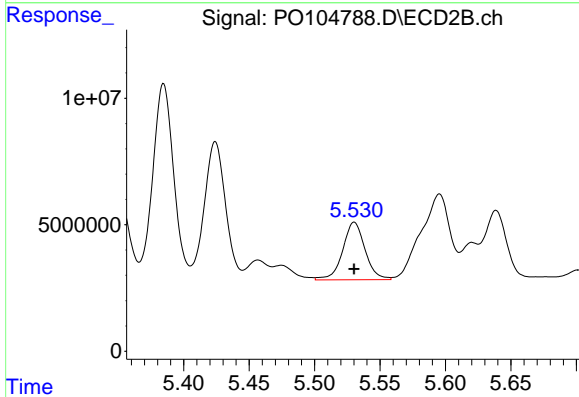




#27 AR-1254-2

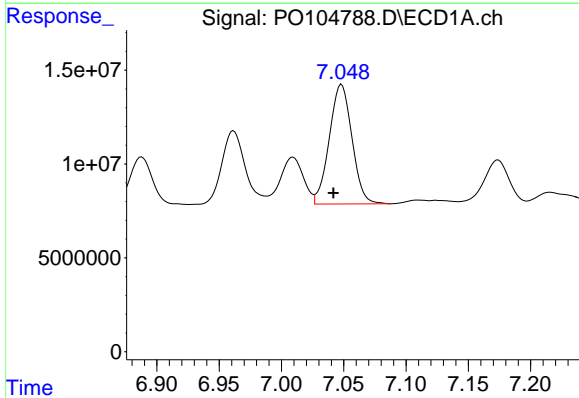
R.T.: 6.682 min  
 Delta R.T.: 0.009 min  
 Response: 149477680  
 Conc: 334.32 ng/ml

Instrument :  
 ECD\_O  
 ClientSampleId :



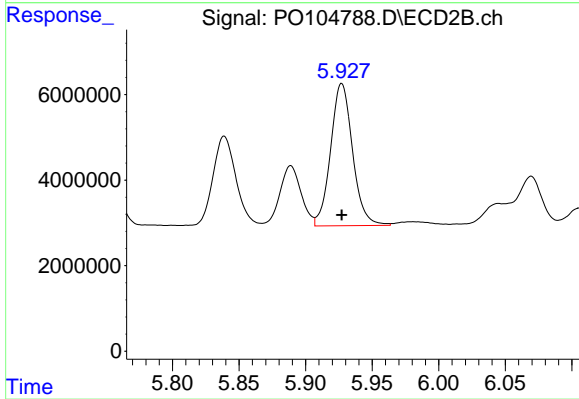
#27 AR-1254-2

R.T.: 5.530 min  
 Delta R.T.: 0.000 min  
 Response: 27087614  
 Conc: 182.15 ng/ml



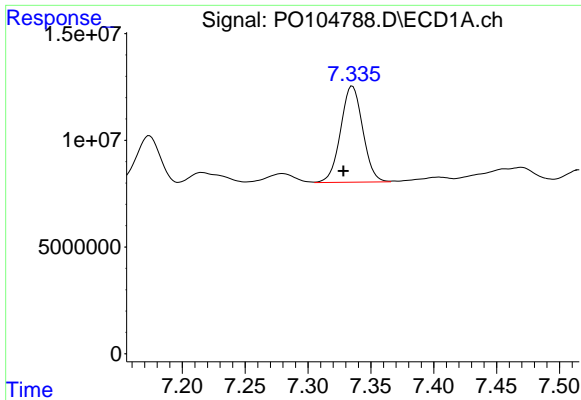
#28 AR-1254-3

R.T.: 7.048 min  
 Delta R.T.: 0.007 min  
 Response: 80699771  
 Conc: 177.40 ng/ml



#28 AR-1254-3

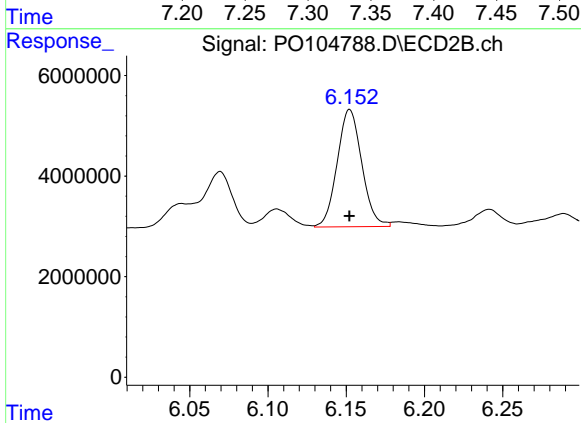
R.T.: 5.927 min  
 Delta R.T.: 0.000 min  
 Response: 38231190  
 Conc: 165.98 ng/ml



#29 AR-1254-4

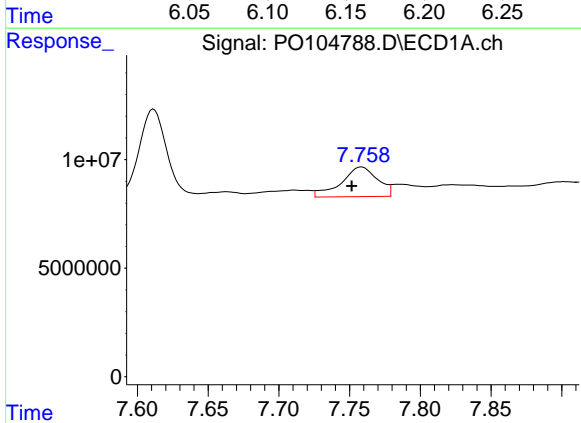
R.T.: 7.335 min  
 Delta R.T.: 0.007 min  
 Response: 55087930  
 Conc: 163.37 ng/ml

Instrument :  
 ECD\_O  
 ClientSampleId :



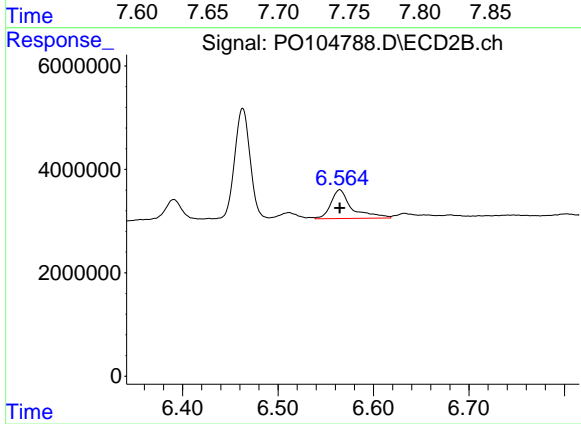
#29 AR-1254-4

R.T.: 6.152 min  
 Delta R.T.: 0.000 min  
 Response: 25502934  
 Conc: 178.75 ng/ml



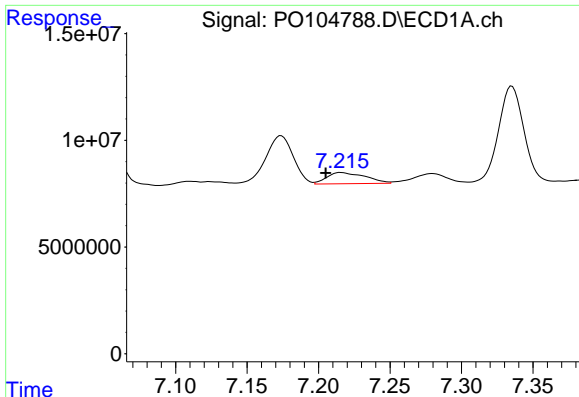
#30 AR-1254-5

R.T.: 7.759 min  
 Delta R.T.: 0.007 min  
 Response: 24375496  
 Conc: 65.27 ng/ml



#30 AR-1254-5

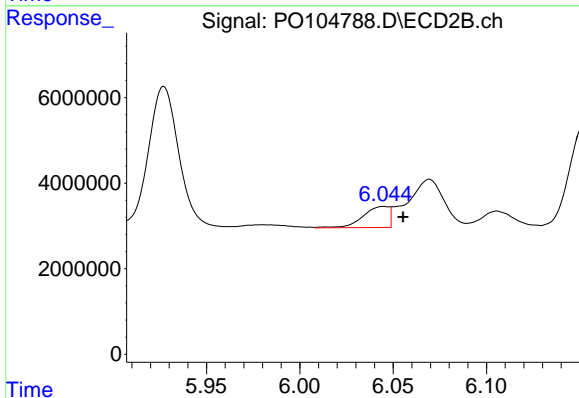
R.T.: 6.565 min  
 Delta R.T.: 0.000 min  
 Response: 8612660  
 Conc: 42.92 ng/ml



#31 AR-1260-1

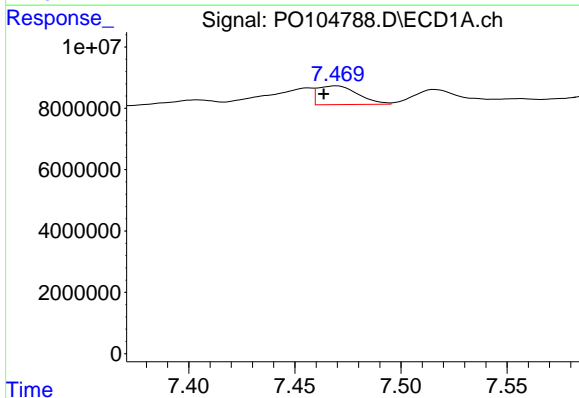
R.T.: 7.216 min  
 Delta R.T.: 0.011 min  
 Response: 9861193  
 Conc: 27.32 ng/ml

Instrument :  
 ECD\_O  
 ClientSampleId :



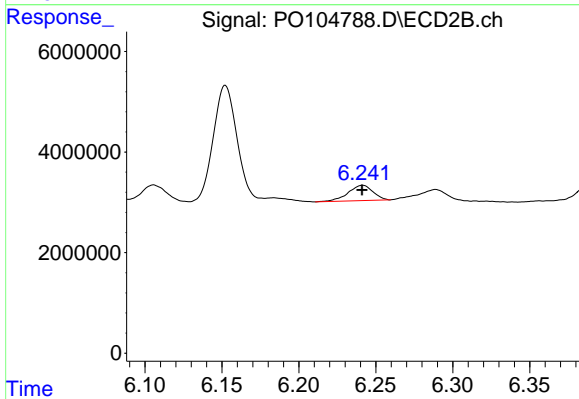
#31 AR-1260-1

R.T.: 6.045 min  
 Delta R.T.: -0.010 min  
 Response: 4737589  
 Conc: 29.59 ng/ml



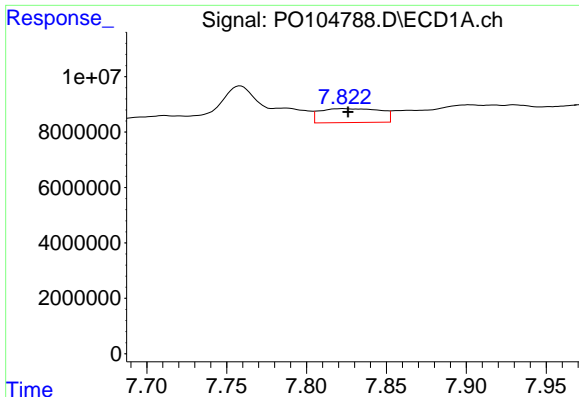
#32 AR-1260-2

R.T.: 7.470 min  
 Delta R.T.: 0.006 min  
 Response: 8018450  
 Conc: 19.01 ng/ml



#32 AR-1260-2

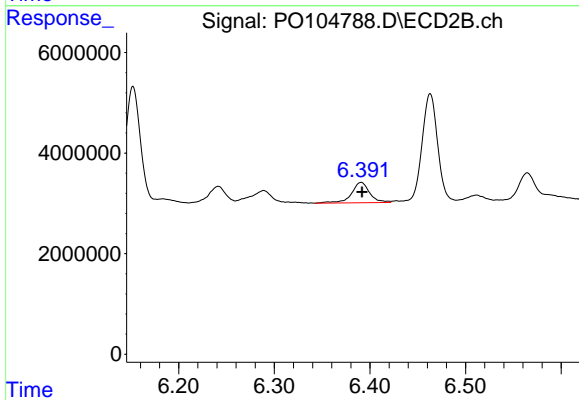
R.T.: 6.241 min  
 Delta R.T.: 0.000 min  
 Response: 3423729  
 Conc: 17.82 ng/ml



#33 AR-1260-3

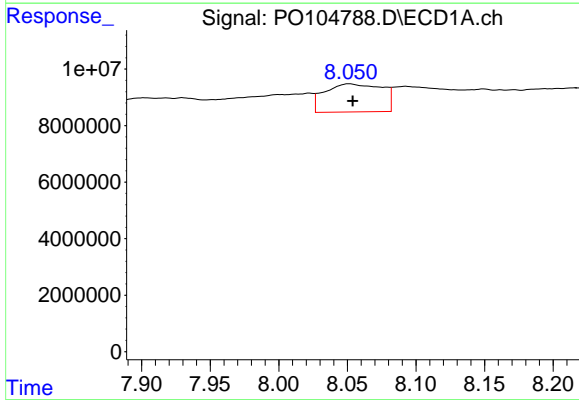
R.T.: 7.823 min  
 Delta R.T.: -0.003 min  
 Response: 13261434  
 Conc: 44.89 ng/ml

Instrument :  
 ECD\_O  
 ClientSampleId :



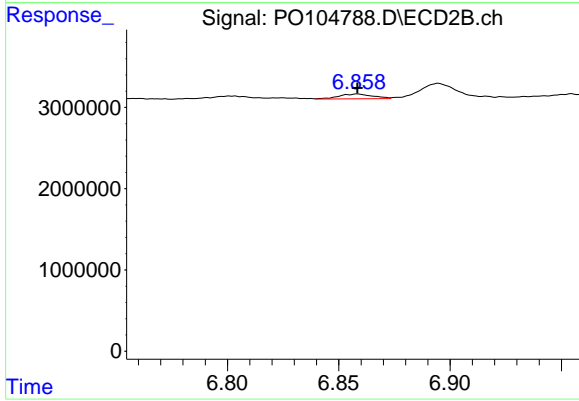
#33 AR-1260-3

R.T.: 6.391 min  
 Delta R.T.: -0.001 min  
 Response: 5320838  
 Conc: 29.92 ng/ml



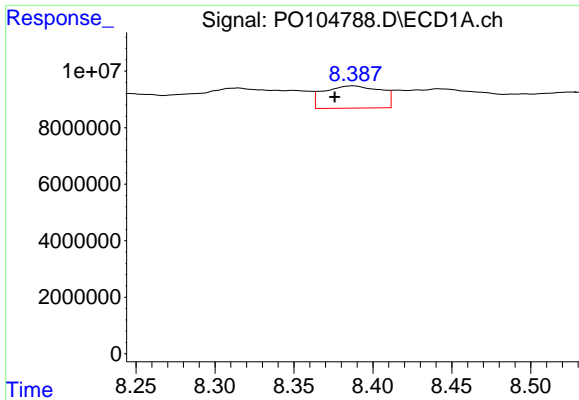
#34 AR-1260-4

R.T.: 8.051 min  
 Delta R.T.: -0.003 min  
 Response: 28877473  
 Conc: 81.51 ng/ml



#34 AR-1260-4

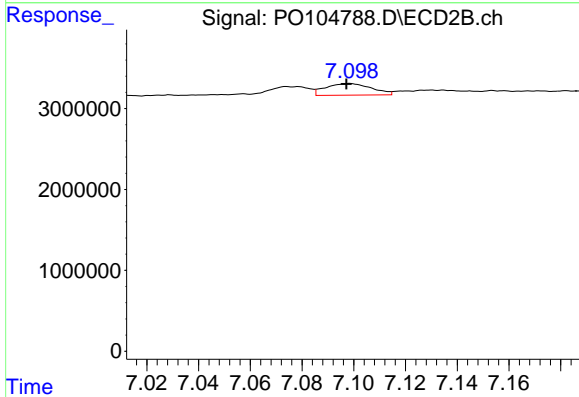
R.T.: 6.859 min  
 Delta R.T.: 0.000 min  
 Response: 628569  
 Conc: 4.69 ng/ml



#35 AR-1260-5

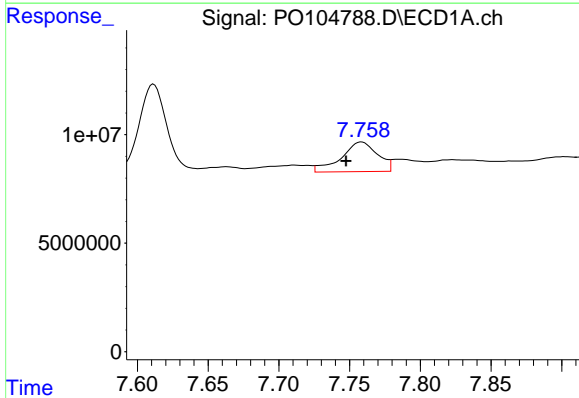
R.T.: 8.388 min  
 Delta R.T.: 0.012 min  
 Response: 19789518  
 Conc: 30.36 ng/ml

Instrument :  
 ECD\_O  
 ClientSampleId :



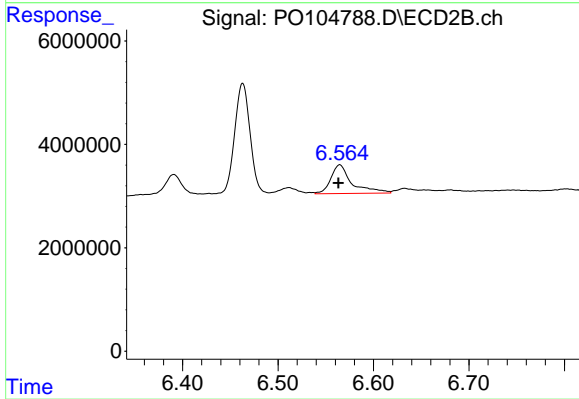
#35 AR-1260-5

R.T.: 7.099 min  
 Delta R.T.: 0.001 min  
 Response: 1772446  
 Conc: 5.79 ng/ml



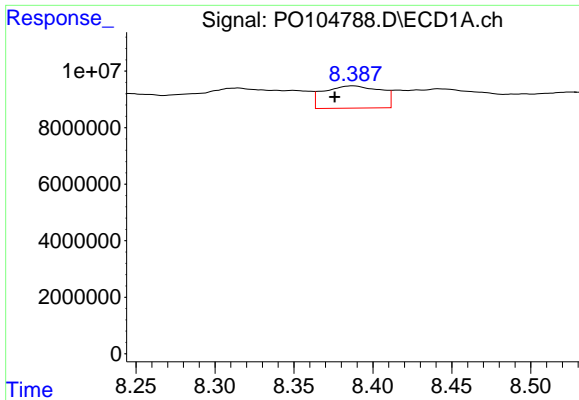
#36 AR-1262-1

R.T.: 7.759 min  
 Delta R.T.: 0.011 min  
 Response: 24375496  
 Conc: 78.96 ng/ml



#36 AR-1262-1

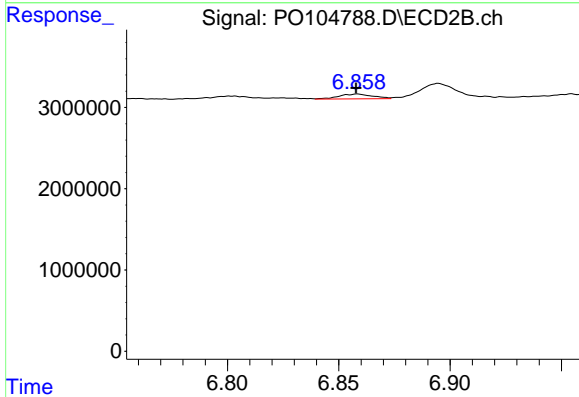
R.T.: 6.565 min  
 Delta R.T.: 0.002 min  
 Response: 8612660  
 Conc: 76.08 ng/ml



#37 AR-1262-2

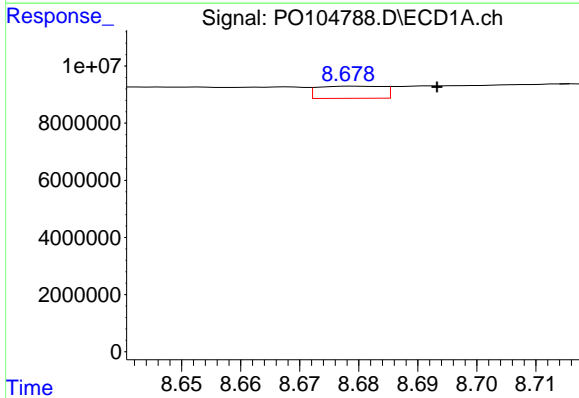
R.T.: 8.388 min  
 Delta R.T.: 0.012 min  
 Response: 19789518  
 Conc: 25.01 ng/ml

Instrument :  
 ECD\_O  
 ClientSampleId :



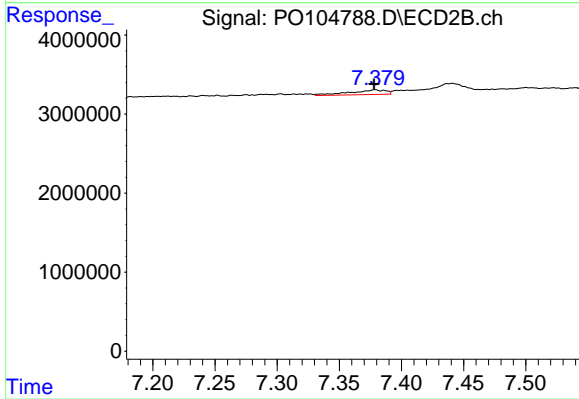
#37 AR-1262-2

R.T.: 6.859 min  
 Delta R.T.: 0.000 min  
 Response: 628569  
 Conc: 3.40 ng/ml



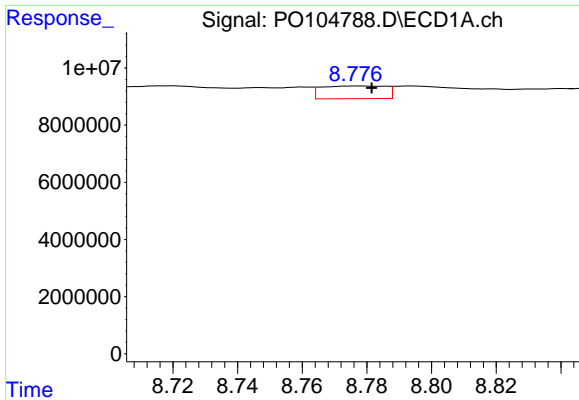
#38 AR-1262-3

R.T.: 8.679 min  
 Delta R.T.: -0.014 min  
 Response: 3257954  
 Conc: 6.05 ng/ml



#38 AR-1262-3

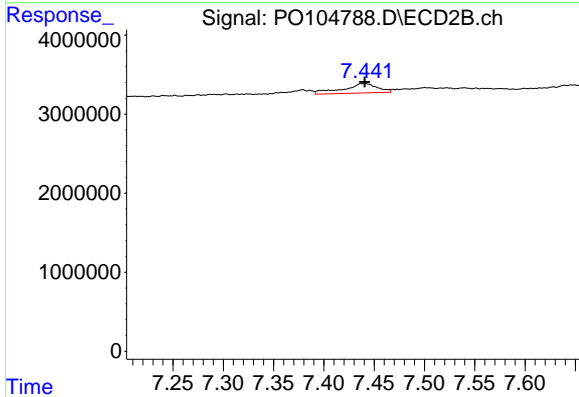
R.T.: 7.379 min  
 Delta R.T.: 0.000 min  
 Response: 1159246  
 Conc: 8.31 ng/ml



#39 AR-1262-4

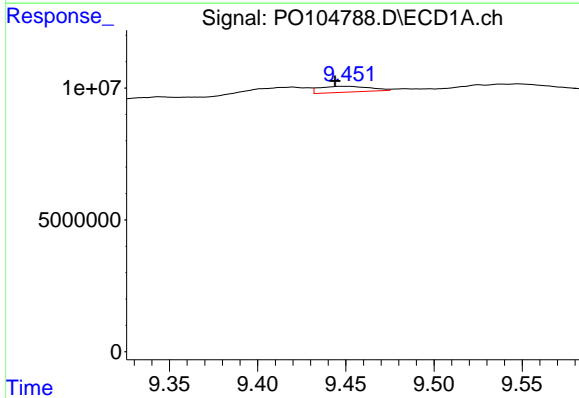
R.T.: 8.777 min  
 Delta R.T.: -0.004 min  
 Response: 6117692  
 Conc: 15.01 ng/ml

Instrument :  
 ECD\_O  
 ClientSampleId :



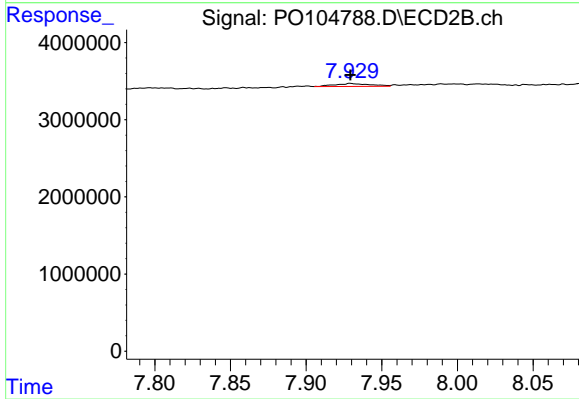
#39 AR-1262-4

R.T.: 7.441 min  
 Delta R.T.: 0.000 min  
 Response: 2877180  
 Conc: 11.16 ng/ml



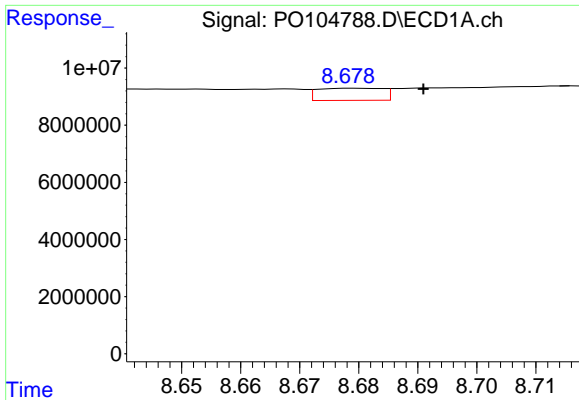
#40 AR-1262-5

R.T.: 9.451 min  
 Delta R.T.: 0.007 min  
 Response: 4391590  
 Conc: 15.73 ng/ml



#40 AR-1262-5

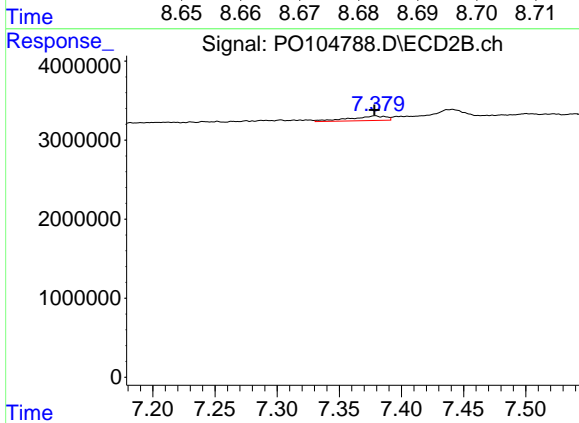
R.T.: 7.929 min  
 Delta R.T.: 0.000 min  
 Response: 604035  
 Conc: 5.30 ng/ml



#41 AR-1268-1

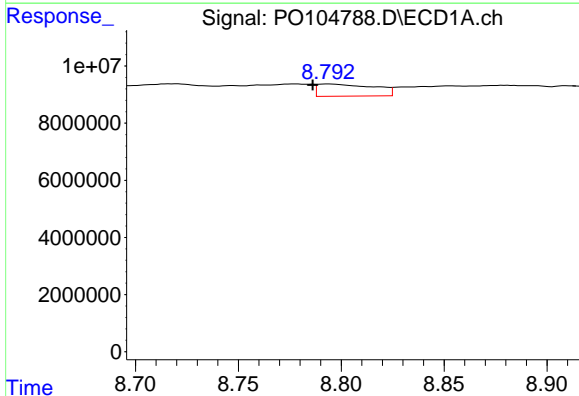
R.T.: 8.679 min  
 Delta R.T.: -0.012 min  
 Response: 3257954  
 Conc: 3.74 ng/ml

Instrument :  
 ECD\_O  
 ClientSampleId :



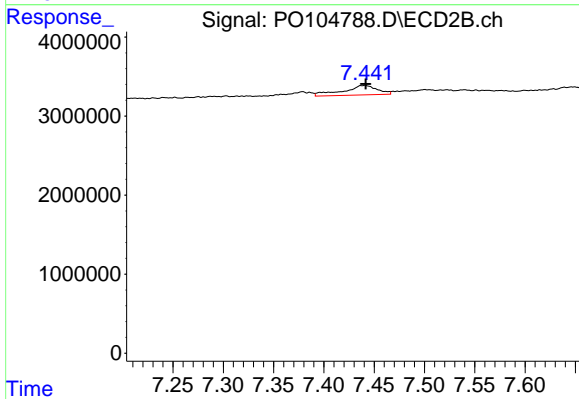
#41 AR-1268-1

R.T.: 7.379 min  
 Delta R.T.: 0.000 min  
 Response: 1159246  
 Conc: 3.04 ng/ml



#42 AR-1268-2

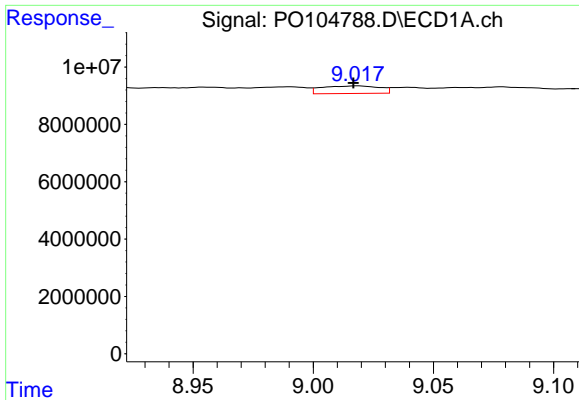
R.T.: 8.793 min  
 Delta R.T.: 0.007 min  
 Response: 8091276  
 Conc: 10.12 ng/ml



#42 AR-1268-2

R.T.: 7.441 min  
 Delta R.T.: 0.000 min  
 Response: 2877180  
 Conc: 8.45 ng/ml

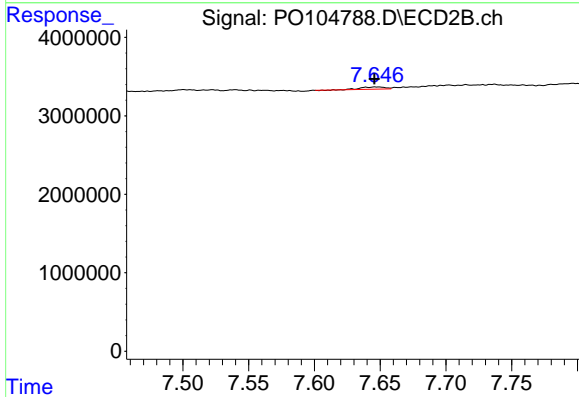




#43 AR-1268-3

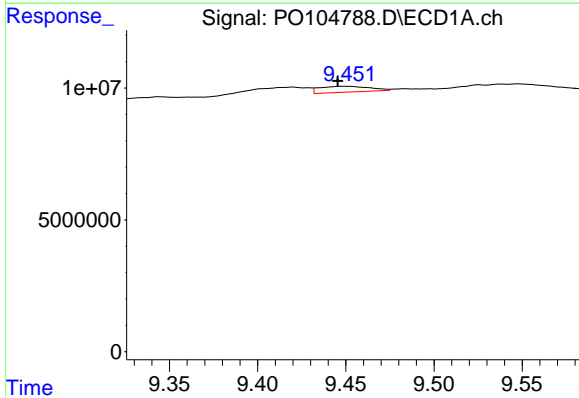
R.T.: 9.018 min  
 Delta R.T.: 0.002 min  
 Response: 4426810  
 Conc: 6.66 ng/ml

Instrument :  
 ECD\_O  
 ClientSampleId :



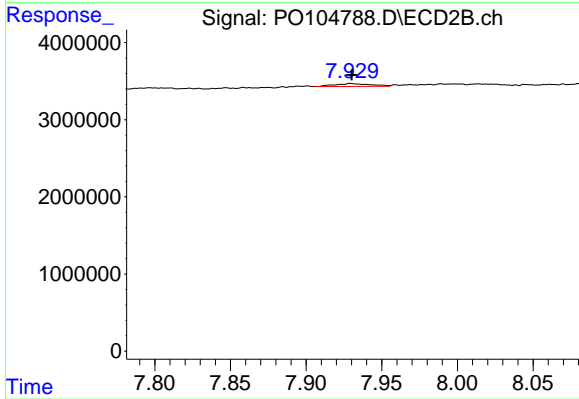
#43 AR-1268-3

R.T.: 7.647 min  
 Delta R.T.: 0.002 min  
 Response: 360167  
 Conc: 1.31 ng/ml



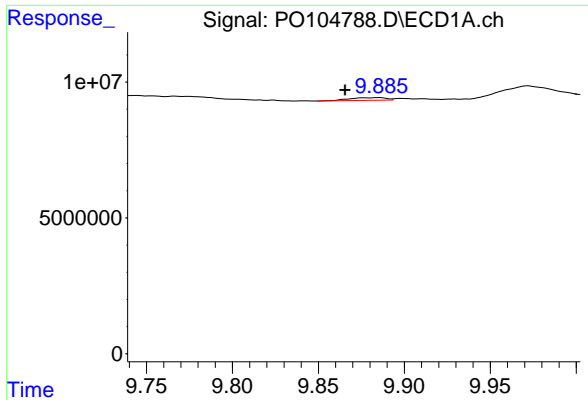
#44 AR-1268-4

R.T.: 9.451 min  
 Delta R.T.: 0.005 min  
 Response: 4391590  
 Conc: 15.38 ng/ml



#44 AR-1268-4

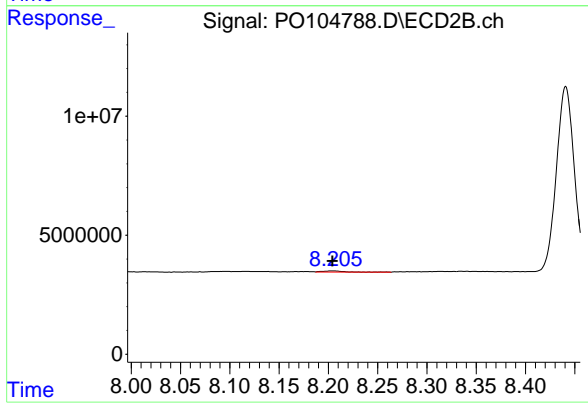
R.T.: 7.929 min  
 Delta R.T.: 0.000 min  
 Response: 604035  
 Conc: 5.12 ng/ml



#45 AR-1268-5

R.T.: 9.885 min  
Delta R.T.: 0.020 min  
Response: 1487725  
Conc: 0.71 ng/ml

Instrument :  
ECD\_O  
ClientSampleId :



#45 AR-1268-5

R.T.: 8.205 min  
Delta R.T.: 0.001 min  
Response: 683259  
Conc: 0.88 ng/ml