

Data Path : Z:\pestpcbsrv\HPCHEM1\ECD_O\Data\P0071724\
 Data File : P0104810.D
 Signal(s) : Signal #1: ECD1A.ch Signal #2: ECD2B.ch
 Acq On : 17 Jul 2024 17:09
 Operator : YP/AJ
 Sample : P3266-03
 Misc :
 ALS Vial : 21 Sample Multiplier: 1

Instrument :
 ECD_O
 ClientSampleId :
 SP-1-COMP

Integration File signal 1: autoint1.e
 Integration File signal 2: autoint2.e
 Quant Time: Jul 18 01:48:28 2024
 Quant Method : Z:\pestpcbsrv\HPCHEM1\ECD_O\methods\P0070224.M
 Quant Title : GC EXTRACTABLES
 QLast Update : Tue Jul 02 16:29:20 2024
 Response via : Initial Calibration
 Integrator: ChemStation

Volume Inj. : 2 µl
 Signal #1 Phase : ZB-MR2 Signal #2 Phase: ZB-MR2
 Signal #1 Info : 30Mx0.32mmx 0.50µ Signal #2 Info : 30M x 0.32mm x 0.25µm

Compound	RT#1	RT#2	Resp#1	Resp#2	ng/ml	ng/ml

System Monitoring Compounds						
1) SA Tetrachlo...	4.429	3.543	160.6E6	60803998	17.941	18.637
2) SA Decachlor...	10.220	8.442	111.6E6	34996099	18.193	16.688
Target Compounds						
3) L1 AR-1016-1	5.599	4.597	52704252	32153363	177.141	283.510 #
4) L1 AR-1016-2	5.624	4.617	105.4E6	21238096	253.282	136.690 #
5) L1 AR-1016-3	5.684	4.790	49912310	11294197	195.702	136.824 #
6) L1 AR-1016-4	5.789	4.832	79969191	12831816	373.125	197.401 #
7) L1 AR-1016-5	6.080	5.041	64925182	20023923	310.863	226.547 #
8) L2 AR-1221-1	4.632	3.753	6836150	979781	57.447	24.123 #
9) L2 AR-1221-2	4.703	3.835	9733278	2649491	110.488	82.230 #
10) L2 AR-1221-3	4.799	3.908	21740190	7973712	87.241	83.555
11) L3 AR-1232-1	4.799	3.908	21740190	7973712	105.615	101.257
12) L3 AR-1232-2	5.330	4.617	42274311	21238096	372.509	291.775
13) L3 AR-1232-3	5.624	4.790	105.4E6	11294197	541.682	287.837 #
14) L3 AR-1232-4	5.789	4.872	79969191	15907615	807.035	446.736 #
15) L3 AR-1232-5	5.874	5.041	41807525	20023923	533.715	499.222
16) L4 AR-1242-1	5.599	4.597	52704252	32153363	222.362	360.591 #
17) L4 AR-1242-2	5.624	4.617	105.4E6	21238096	323.041	174.854 #
18) L4 AR-1242-3	5.684	4.790	49912310	11294197	243.106	172.805 #
19) L4 AR-1242-4	5.789	4.872	79969191	15907615	467.433	240.626 #
20) L4 AR-1242-5	6.525	5.385	98705515	43199756	549.799	517.144
21) L5 AR-1248-1	5.599	4.597	52704252	32153363	288.884	463.449 #
22) L5 AR-1248-2	5.874	4.832	41807525	12831816	161.875	135.851
23) L5 AR-1248-3	6.080	4.872	64925182	15907615	236.418	161.302 #
24) L5 AR-1248-4	6.486	5.041	95029956	20023923	312.136	175.148 #
25) L5 AR-1248-5	6.525	5.426	98705515	34191742	335.510	306.215
26) L6 AR-1254-1	6.458	5.385	59131605	43199756	192.177	256.282 #
27) L6 AR-1254-2	6.683	5.531	95112513	19903925	212.726	133.841 #
28) L6 AR-1254-3	7.049	5.928	47921020	24785141	105.343	107.607
29) L6 AR-1254-4	7.336	6.153	24017856	7475496	71.230	52.397 #
30) L6 AR-1254-5	7.759	6.565	47801483	17016377	127.999	84.798 #
31) L7 AR-1260-1	7.215	6.057	42040543	21179112	116.455	132.263
32) L7 AR-1260-2	7.473	6.242	40577392	16656381	96.176	86.703
33) L7 AR-1260-3	7.836	6.393	25034679	11756529	84.737	66.100
34) L7 AR-1260-4	8.063	6.859	55914726	5508698	157.820	41.120 #
35) L7 AR-1260-5	8.386	7.099	44940166	11339809	68.952	37.052 #
36) L8 AR-1262-1	7.759	6.565	47801483	17016377	154.851	150.316
37) L8 AR-1262-2	8.386	6.859	44940166	5508698	56.795	29.826 #
38) L8 AR-1262-3	8.717	7.378	30527263	1978387	56.673	14.175 #
39) L8 AR-1262-4	8.782	7.440	2884816	7898414	7.078	30.639 #
40) L8 AR-1262-5	9.454	7.931	7973994	1953602	28.554	17.129 #
41) L9 AR-1268-1	8.717	7.378	30527263	1978387	35.021	5.183 #

Data Path : Z:\pestpcbsrv\HPCHEM1\ECD_0\Data\P0071724\
 Data File : P0104810.D
 Signal(s) : Signal #1: ECD1A.ch Signal #2: ECD2B.ch
 Acq On : 17 Jul 2024 17:09
 Operator : YP/AJ
 Sample : P3266-03
 Misc :
 ALS Vial : 21 Sample Multiplier: 1

Instrument :
 ECD_0
 ClientSampleId :
 SP-1-COMP

Integration File signal 1: autoint1.e
 Integration File signal 2: autoint2.e
 Quant Time: Jul 18 01:48:28 2024
 Quant Method : Z:\pestpcbsrv\HPCHEM1\ECD_0\methods\P0070224.M
 Quant Title : GC EXTRACTABLES
 QLast Update : Tue Jul 02 16:29:20 2024
 Response via : Initial Calibration
 Integrator: ChemStation

Volume Inj. : 2 µl
 Signal #1 Phase : ZB-MR1 Signal #2 Phase: ZB-MR2
 Signal #1 Info : 30Mx0.32mmx 0.50µ Signal #2 Info : 30M x 0.32mm x 0.25µm

	Compound	RT#1	RT#2	Resp#1	Resp#2	ng/ml	ng/ml
42)	L9 AR-1268-2	8.790	7.440	9051970	7898414	11.320	23.191 #
43)	L9 AR-1268-3	9.024	7.646	8558616	903858	12.884	3.282 #
44)	L9 AR-1268-4	9.454	7.931	7973994	1953602	27.918	16.552 #
45)	L9 AR-1268-5	9.875	8.205	696603	834224	0.331	1.069 #

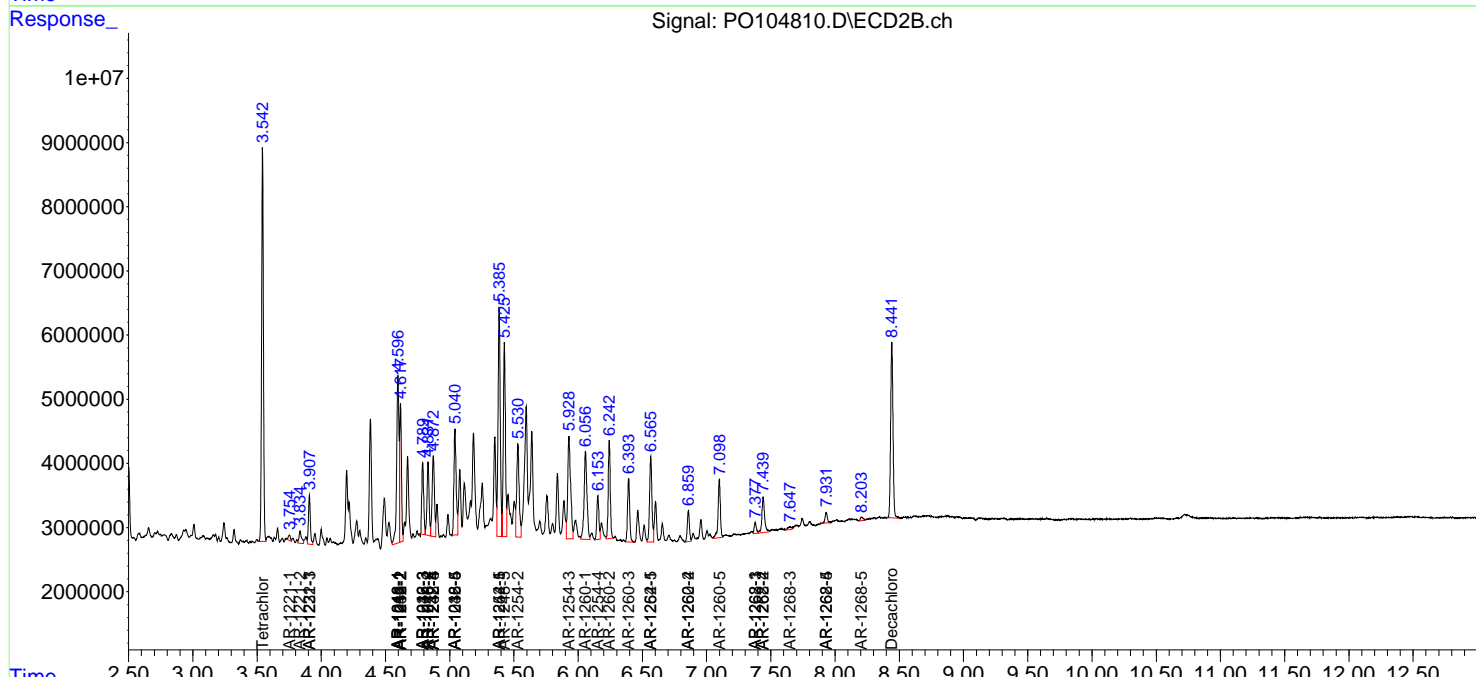
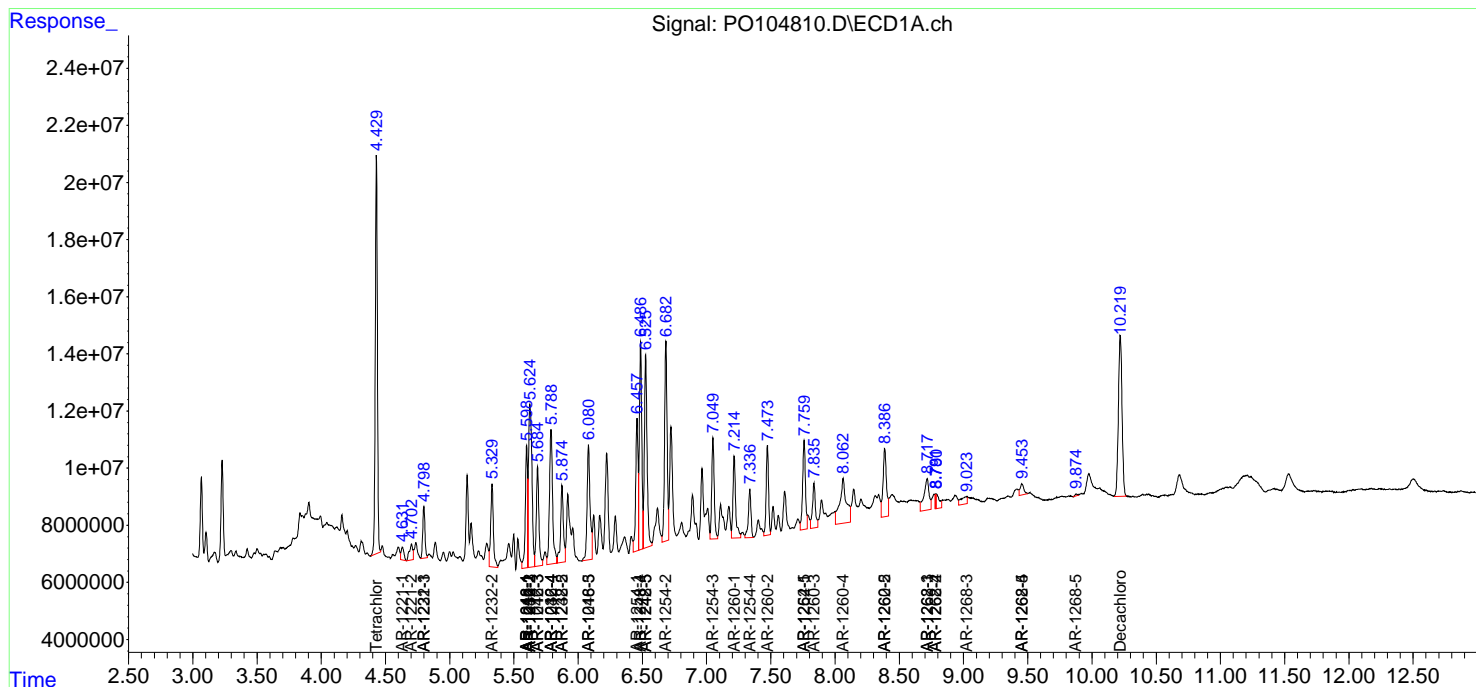
(f)=RT Delta > 1/2 Window (#)=Amounts differ by > 25% (m)=manual int.

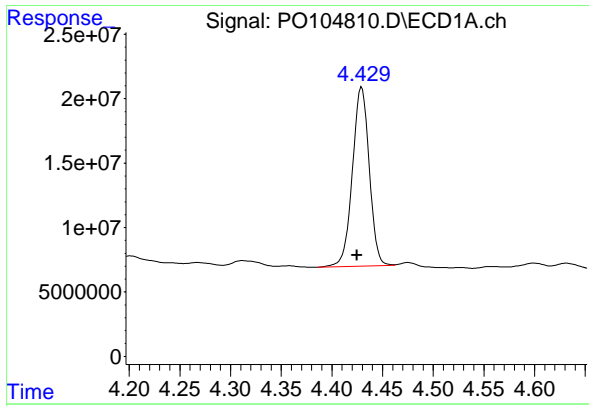
Data Path : Z:\pestpcbsrv\HPCHEM1\ECD_O\Data\PO071724\
 Data File : PO104810.D
 Signal(s) : Signal #1: ECD1A.ch Signal #2: ECD2B.ch
 Acq On : 17 Jul 2024 17:09
 Operator : YP/AJ
 Sample : P3266-03
 Misc :
 ALS Vial : 21 Sample Multiplier: 1

Instrument :
 ECD_O
 ClientSampleId :
 SP-1-COMP

Integration File signal 1: autoint1.e
 Integration File signal 2: autoint2.e
 Quant Time: Jul 18 01:48:28 2024
 Quant Method : Z:\pestpcbsrv\HPCHEM1\ECD_O\methods\PO070224.M
 Quant Title : GC EXTRACTABLES
 QLast Update : Tue Jul 02 16:29:20 2024
 Response via : Initial Calibration
 Integrator: ChemStation

Volume Inj. : 2 µl
 Signal #1 Phase : ZB-MR1 Signal #2 Phase: ZB-MR2
 Signal #1 Info : 30Mx0.32mmx 0.50µm Signal #2 Info : 30M x 0.32mm x 0.25µm

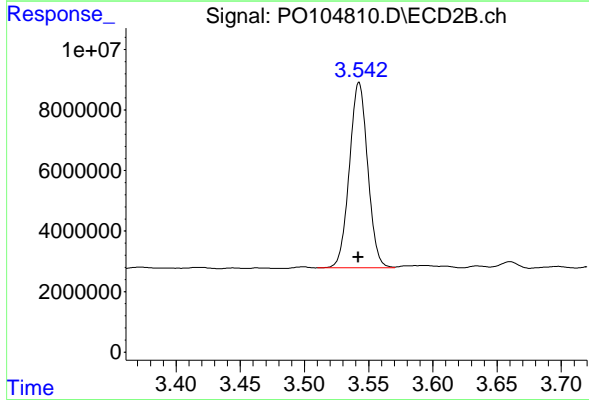




#1 Tetrachloro-m-xylene

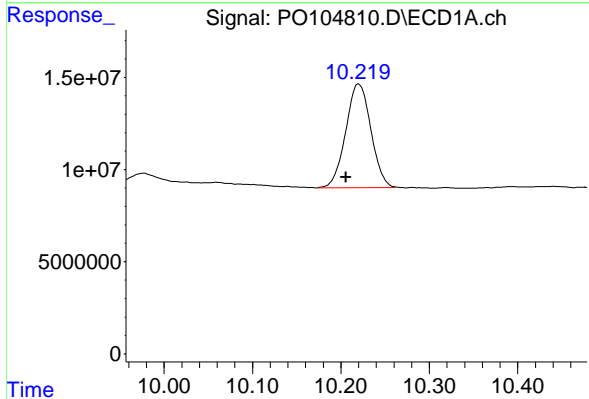
R.T.: 4.429 min
 Delta R.T.: 0.004 min
 Response: 160636799
 Conc: 17.94 ng/ml

Instrument :
 ECD_O
 ClientSampleId :
 SP-1-COMP



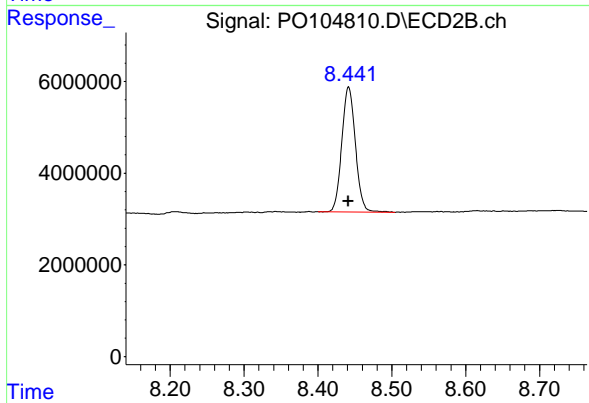
#1 Tetrachloro-m-xylene

R.T.: 3.543 min
 Delta R.T.: 0.000 min
 Response: 60803998
 Conc: 18.64 ng/ml



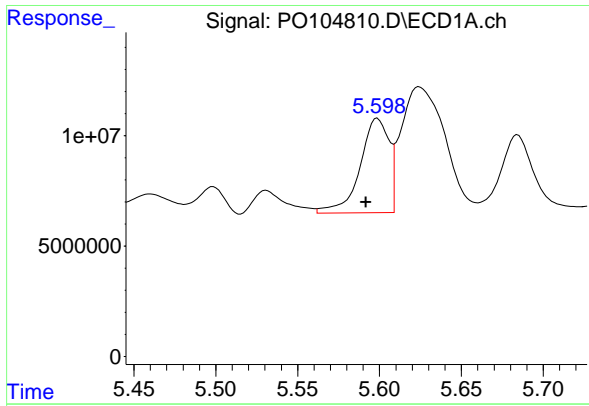
#2 Decachlorobiphenyl

R.T.: 10.220 min
 Delta R.T.: 0.014 min
 Response: 111566843
 Conc: 18.19 ng/ml



#2 Decachlorobiphenyl

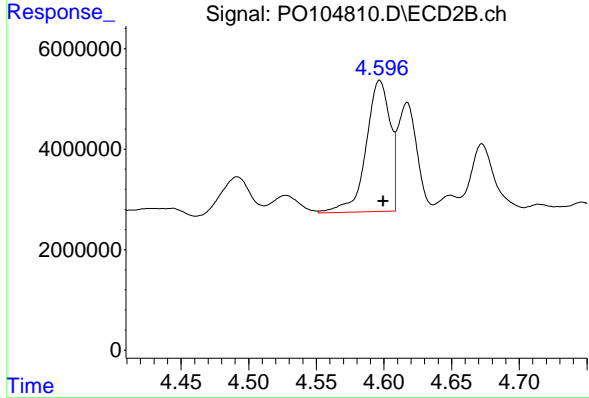
R.T.: 8.442 min
 Delta R.T.: 0.000 min
 Response: 34996099
 Conc: 16.69 ng/ml



#3 AR-1016-1

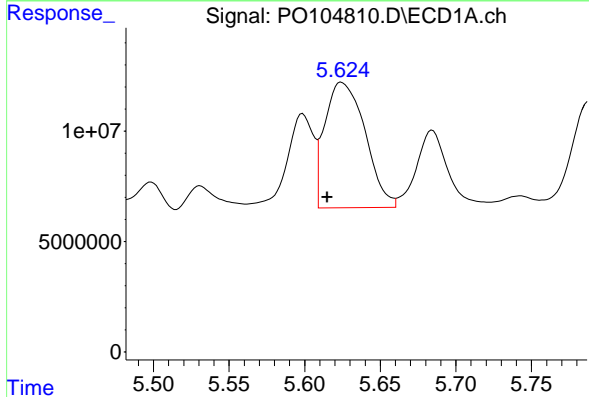
R.T.: 5.599 min
 Delta R.T.: 0.007 min
 Response: 52704252
 Conc: 177.14 ng/ml

Instrument :
 ECD_O
 ClientSampleId :
 SP-1-COMP



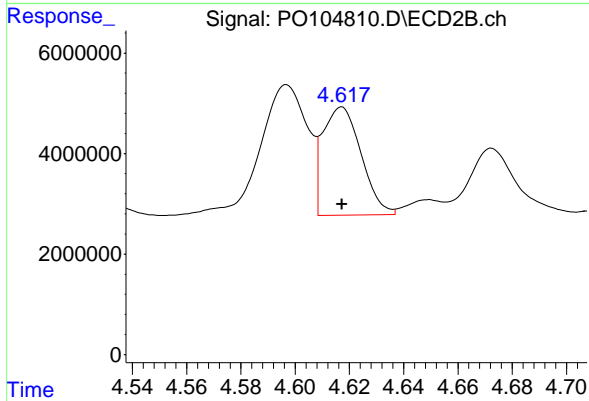
#3 AR-1016-1

R.T.: 4.597 min
 Delta R.T.: -0.003 min
 Response: 32153363
 Conc: 283.51 ng/ml



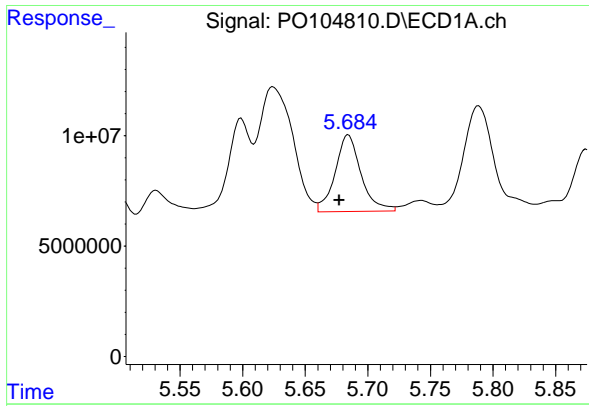
#4 AR-1016-2

R.T.: 5.624 min
 Delta R.T.: 0.009 min
 Response: 105440121
 Conc: 253.28 ng/ml



#4 AR-1016-2

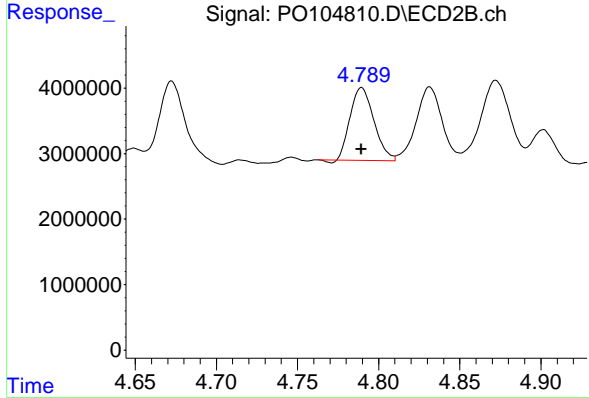
R.T.: 4.617 min
 Delta R.T.: 0.000 min
 Response: 21238096
 Conc: 136.69 ng/ml



#5 AR-1016-3

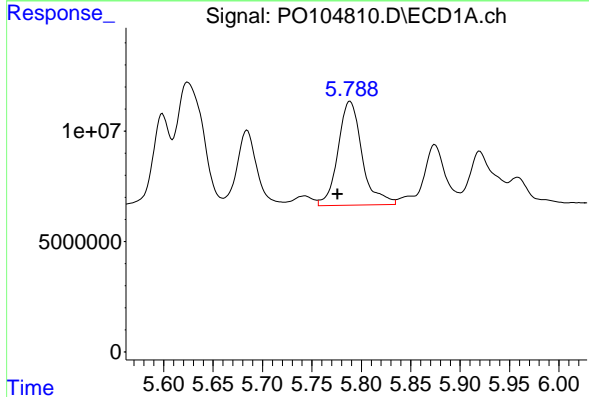
R.T.: 5.684 min
 Delta R.T.: 0.007 min
 Response: 49912310
 Conc: 195.70 ng/ml

Instrument :
 ECD_O
 ClientSampleId :
 SP-1-COMP



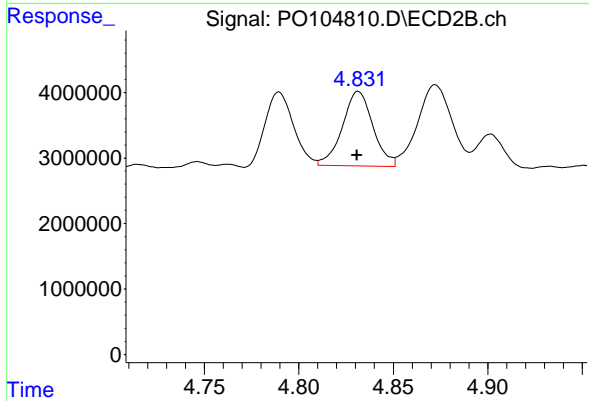
#5 AR-1016-3

R.T.: 4.790 min
 Delta R.T.: 0.000 min
 Response: 11294197
 Conc: 136.82 ng/ml



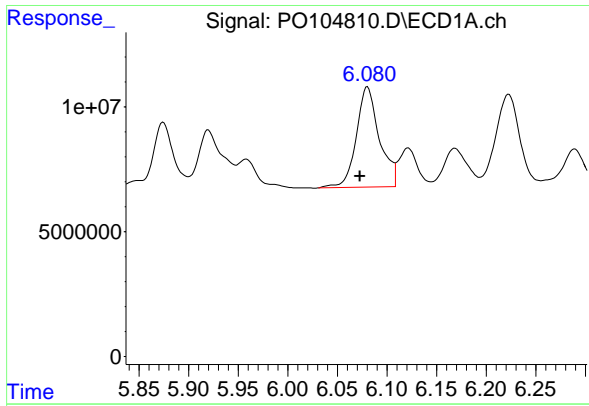
#6 AR-1016-4

R.T.: 5.789 min
 Delta R.T.: 0.013 min
 Response: 79969191
 Conc: 373.12 ng/ml



#6 AR-1016-4

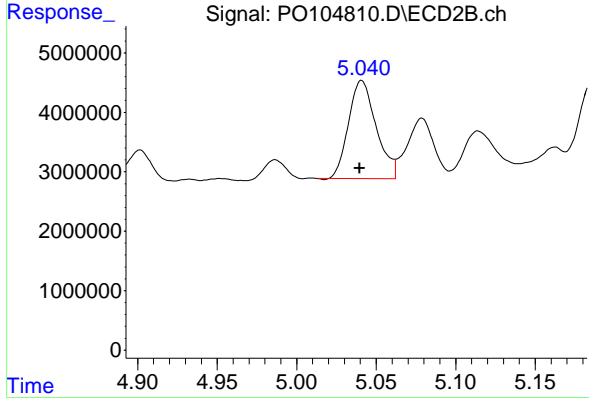
R.T.: 4.832 min
 Delta R.T.: 0.000 min
 Response: 12831816
 Conc: 197.40 ng/ml



#7 AR-1016-5

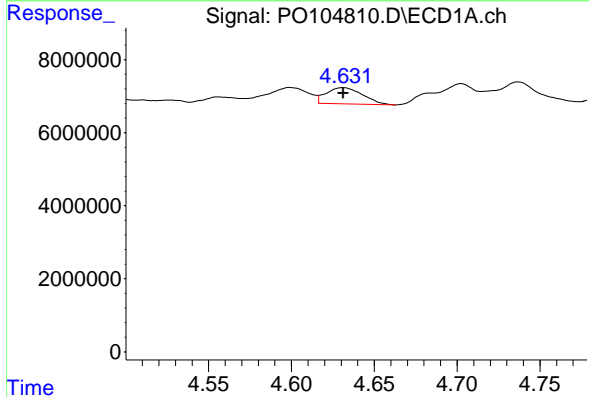
R.T.: 6.080 min
 Delta R.T.: 0.008 min
 Response: 64925182
 Conc: 310.86 ng/ml

Instrument :
 ECD_O
 ClientSampleId :
 SP-1-COMP



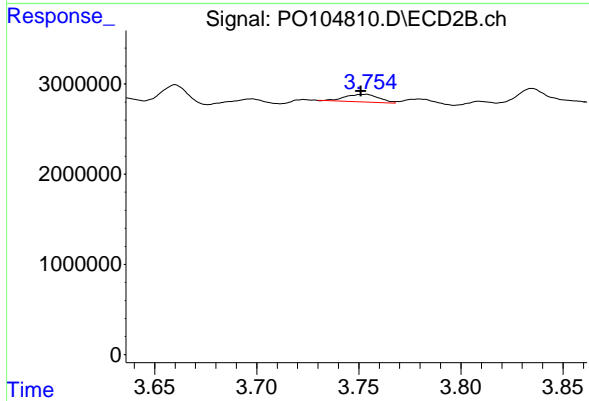
#7 AR-1016-5

R.T.: 5.041 min
 Delta R.T.: 0.001 min
 Response: 20023923
 Conc: 226.55 ng/ml



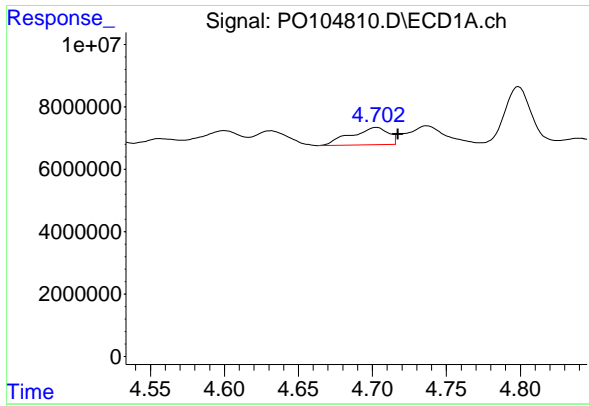
#8 AR-1221-1

R.T.: 4.632 min
 Delta R.T.: 0.000 min
 Response: 6836150
 Conc: 57.45 ng/ml



#8 AR-1221-1

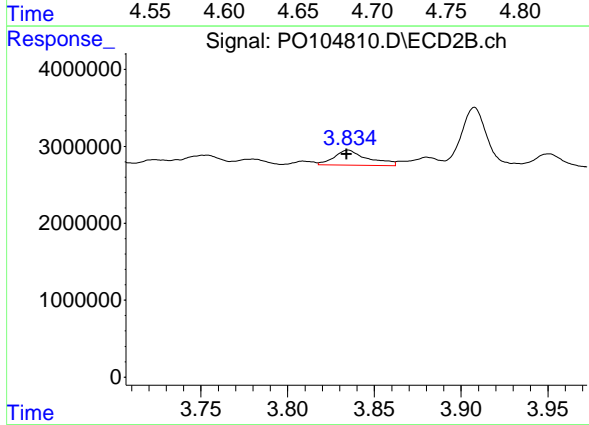
R.T.: 3.753 min
 Delta R.T.: 0.002 min
 Response: 979781
 Conc: 24.12 ng/ml



#9 AR-1221-2

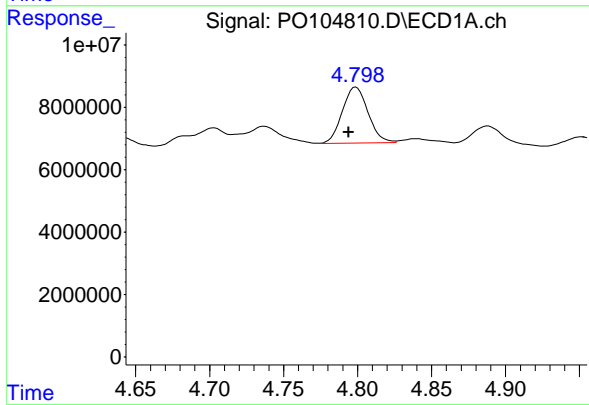
R.T.: 4.703 min
 Delta R.T.: -0.014 min
 Response: 9733278
 Conc: 110.49 ng/ml

Instrument :
 ECD_O
 ClientSampleId :
 SP-1-COMP



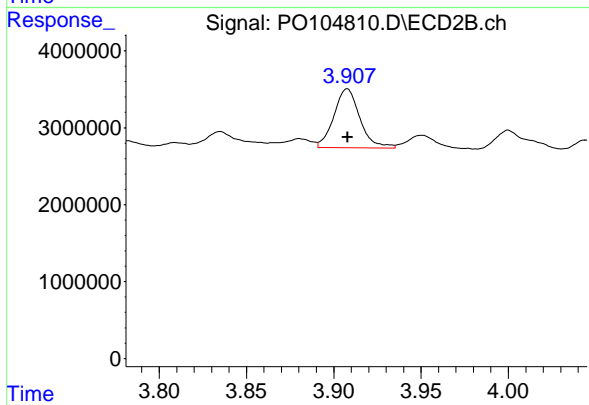
#9 AR-1221-2

R.T.: 3.835 min
 Delta R.T.: 0.000 min
 Response: 2649491
 Conc: 82.23 ng/ml



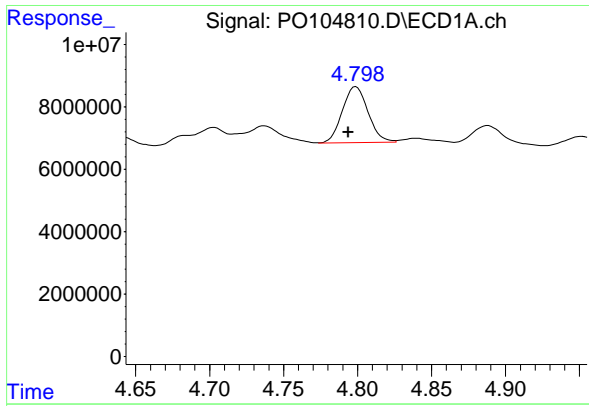
#10 AR-1221-3

R.T.: 4.799 min
 Delta R.T.: 0.005 min
 Response: 21740190
 Conc: 87.24 ng/ml



#10 AR-1221-3

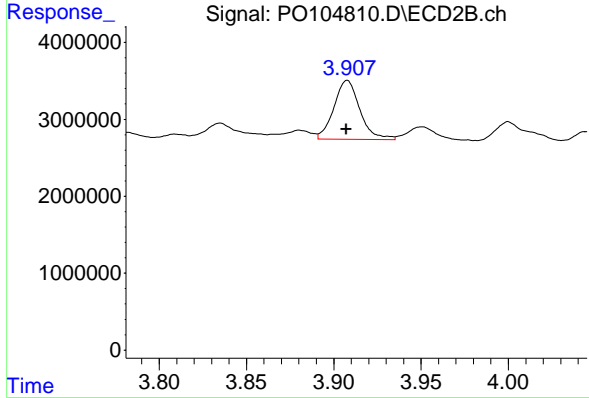
R.T.: 3.908 min
 Delta R.T.: 0.000 min
 Response: 7973712
 Conc: 83.56 ng/ml



#11 AR-1232-1

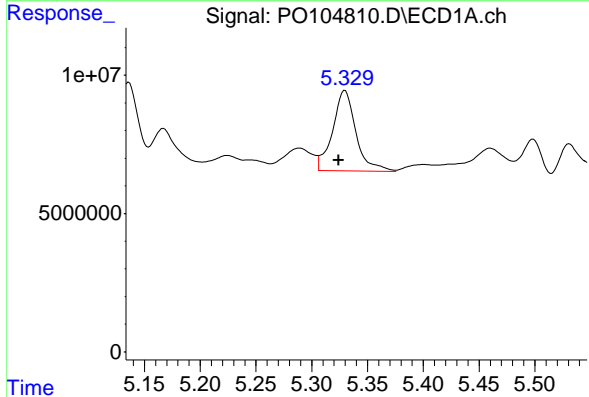
R.T.: 4.799 min
 Delta R.T.: 0.005 min
 Response: 21740190
 Conc: 105.61 ng/ml

Instrument :
 ECD_O
 ClientSampleId :
 SP-1-COMP



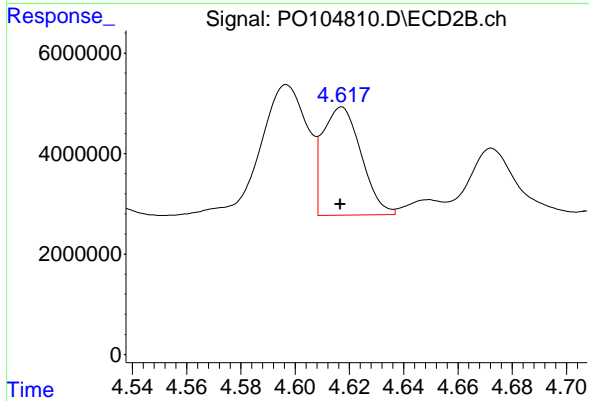
#11 AR-1232-1

R.T.: 3.908 min
 Delta R.T.: 0.000 min
 Response: 7973712
 Conc: 101.26 ng/ml



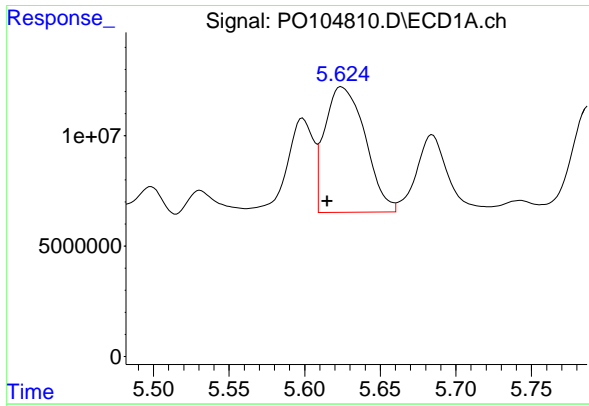
#12 AR-1232-2

R.T.: 5.330 min
 Delta R.T.: 0.006 min
 Response: 42274311
 Conc: 372.51 ng/ml



#12 AR-1232-2

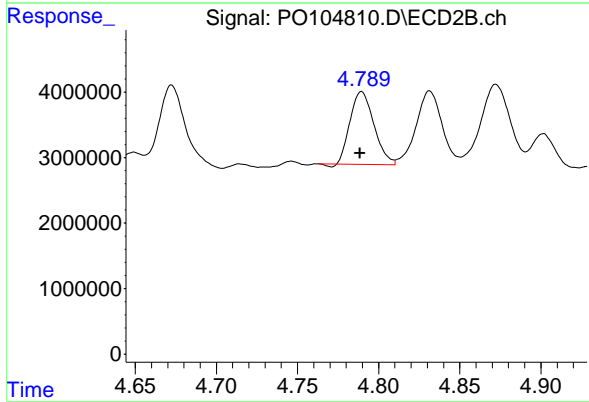
R.T.: 4.617 min
 Delta R.T.: 0.000 min
 Response: 21238096
 Conc: 291.77 ng/ml



#13 AR-1232-3

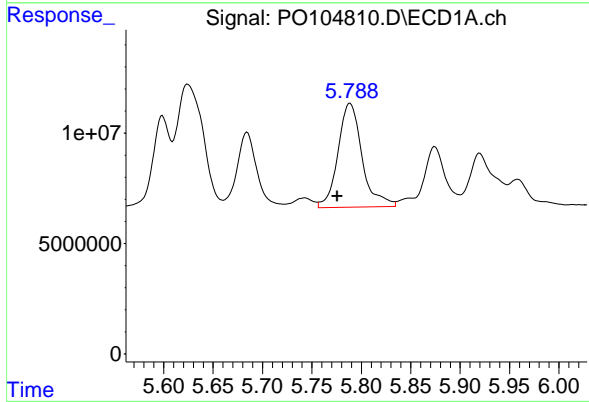
R.T.: 5.624 min
 Delta R.T.: 0.009 min
 Response: 105440121
 Conc: 541.68 ng/ml

Instrument :
 ECD_O
 ClientSampleId :
 SP-1-COMP



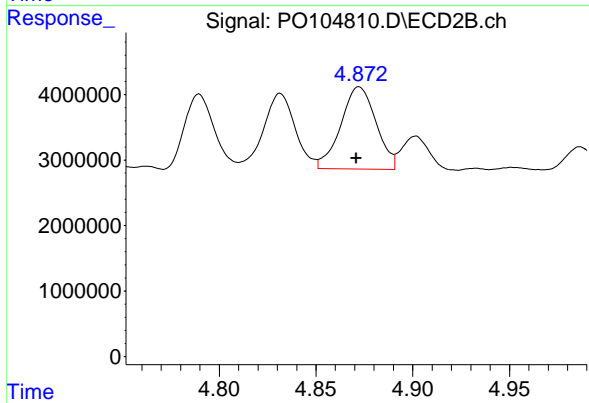
#13 AR-1232-3

R.T.: 4.790 min
 Delta R.T.: 0.001 min
 Response: 11294197
 Conc: 287.84 ng/ml



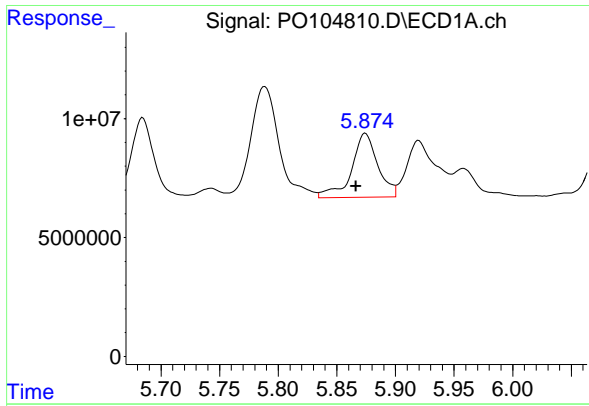
#14 AR-1232-4

R.T.: 5.789 min
 Delta R.T.: 0.013 min
 Response: 79969191
 Conc: 807.03 ng/ml



#14 AR-1232-4

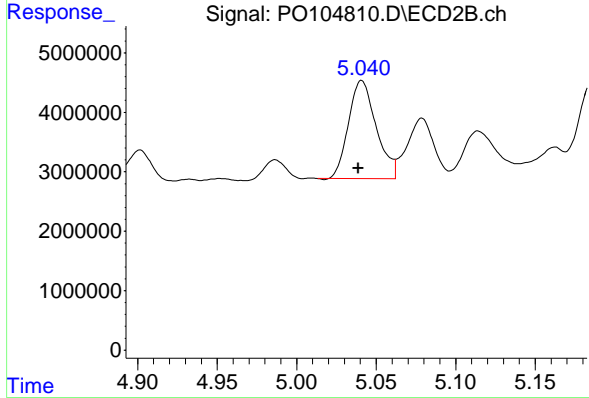
R.T.: 4.872 min
 Delta R.T.: 0.001 min
 Response: 15907615
 Conc: 446.74 ng/ml



#15 AR-1232-5

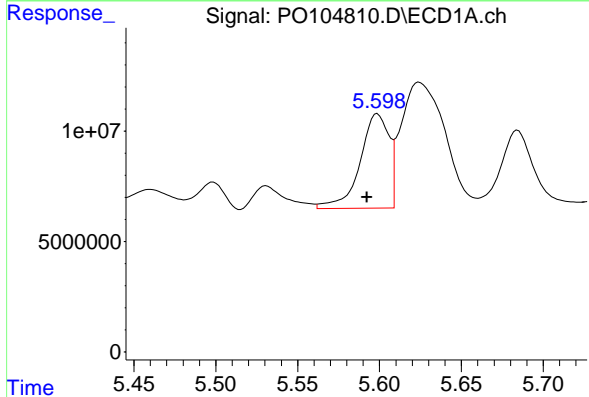
R.T.: 5.874 min
 Delta R.T.: 0.008 min
 Response: 41807525
 Conc: 533.71 ng/ml

Instrument :
 ECD_O
 ClientSampleId :
 SP-1-COMP



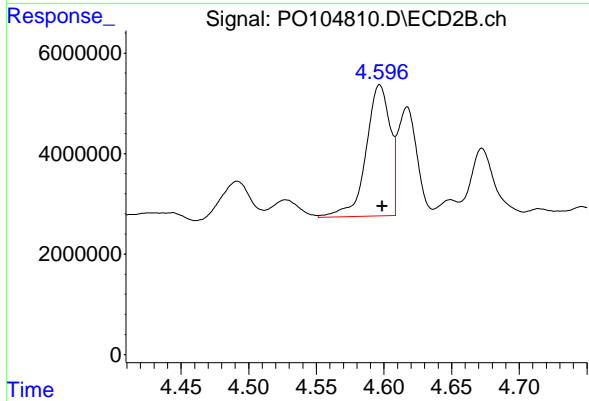
#15 AR-1232-5

R.T.: 5.041 min
 Delta R.T.: 0.002 min
 Response: 20023923
 Conc: 499.22 ng/ml



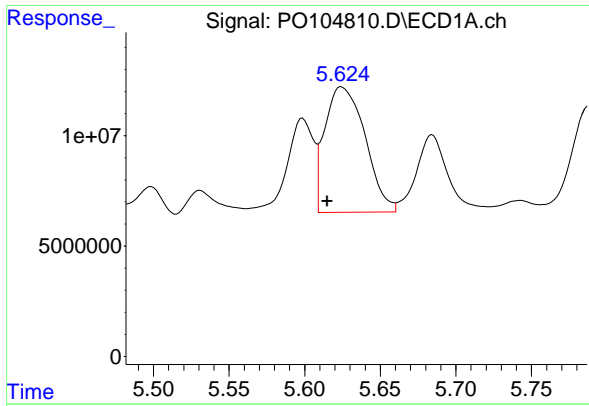
#16 AR-1242-1

R.T.: 5.599 min
 Delta R.T.: 0.006 min
 Response: 52704252
 Conc: 222.36 ng/ml



#16 AR-1242-1

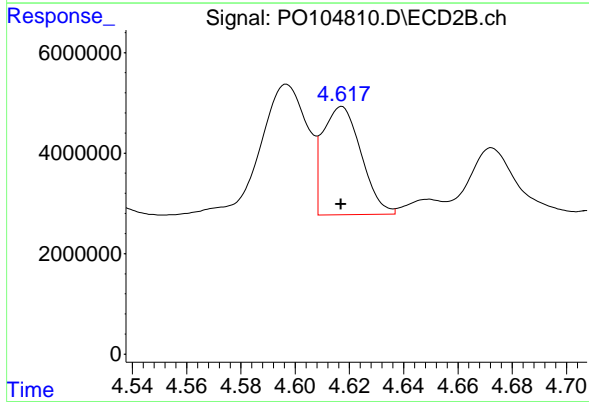
R.T.: 4.597 min
 Delta R.T.: -0.002 min
 Response: 32153363
 Conc: 360.59 ng/ml



#17 AR-1242-2

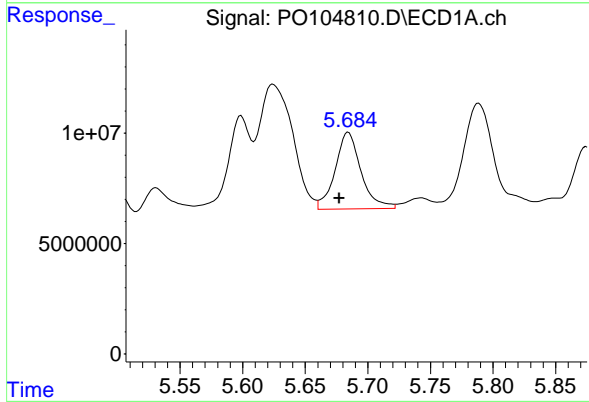
R.T.: 5.624 min
 Delta R.T.: 0.009 min
 Response: 105440121
 Conc: 323.04 ng/ml

Instrument :
 ECD_O
 ClientSampleId :
 SP-1-COMP



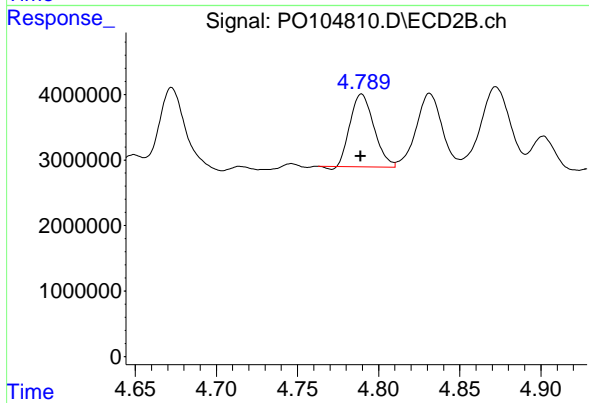
#17 AR-1242-2

R.T.: 4.617 min
 Delta R.T.: 0.000 min
 Response: 21238096
 Conc: 174.85 ng/ml



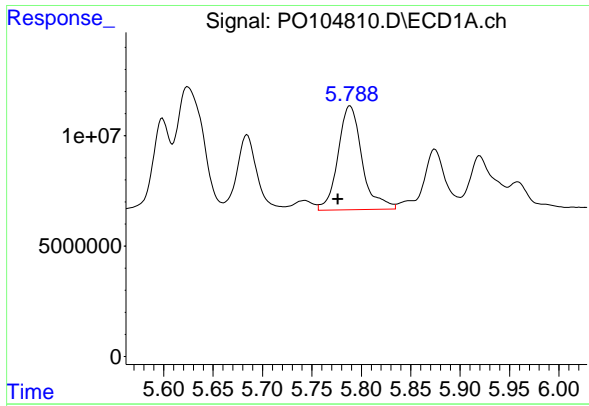
#18 AR-1242-3

R.T.: 5.684 min
 Delta R.T.: 0.007 min
 Response: 49912310
 Conc: 243.11 ng/ml



#18 AR-1242-3

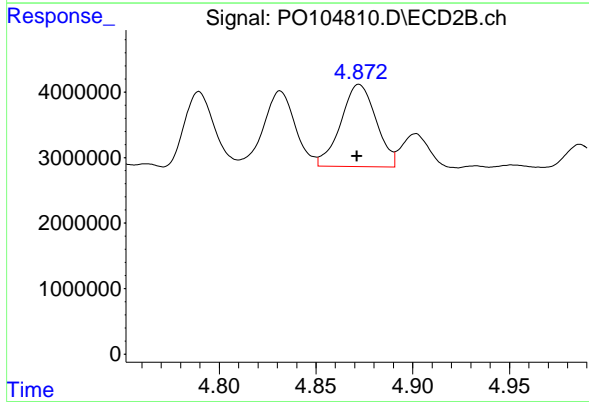
R.T.: 4.790 min
 Delta R.T.: 0.000 min
 Response: 11294197
 Conc: 172.81 ng/ml



#19 AR-1242-4

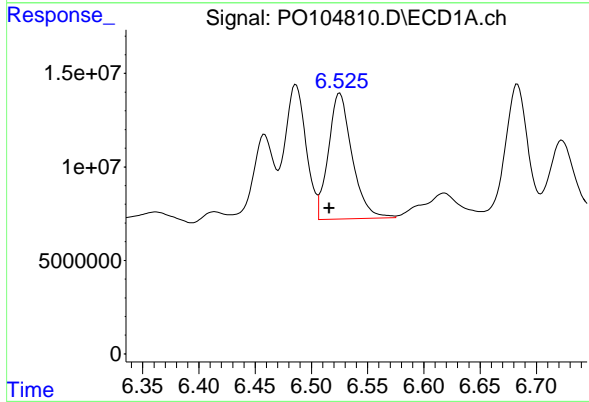
R.T.: 5.789 min
 Delta R.T.: 0.012 min
 Response: 79969191
 Conc: 467.43 ng/ml

Instrument :
 ECD_O
 ClientSampleId :
 SP-1-COMP



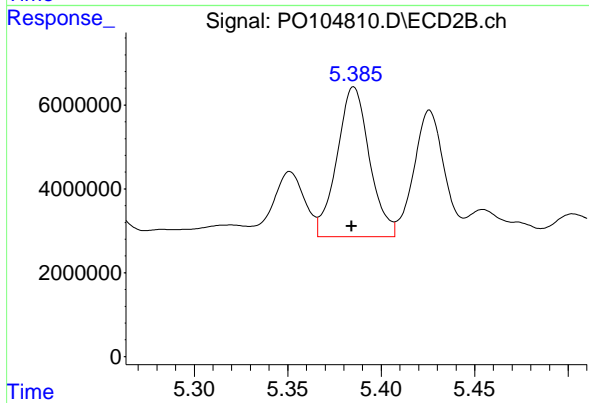
#19 AR-1242-4

R.T.: 4.872 min
 Delta R.T.: 0.000 min
 Response: 15907615
 Conc: 240.63 ng/ml



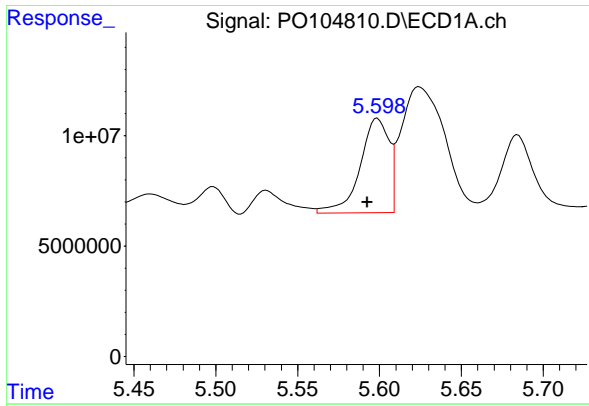
#20 AR-1242-5

R.T.: 6.525 min
 Delta R.T.: 0.009 min
 Response: 98705515
 Conc: 549.80 ng/ml



#20 AR-1242-5

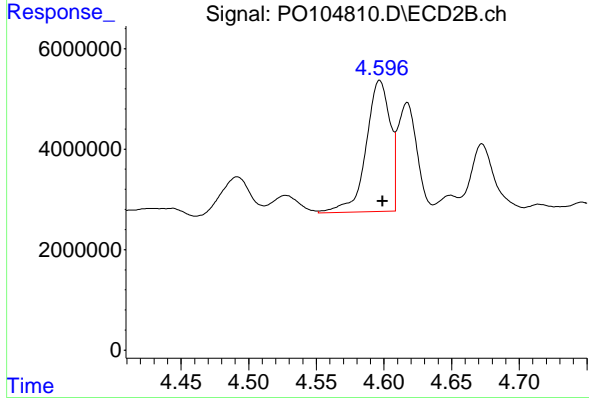
R.T.: 5.385 min
 Delta R.T.: 0.001 min
 Response: 43199756
 Conc: 517.14 ng/ml



#21 AR-1248-1

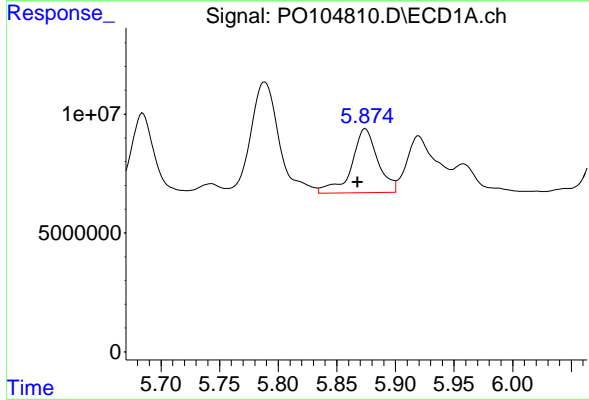
R.T.: 5.599 min
 Delta R.T.: 0.006 min
 Response: 52704252
 Conc: 288.88 ng/ml

Instrument :
 ECD_O
 ClientSampleId :
 SP-1-COMP



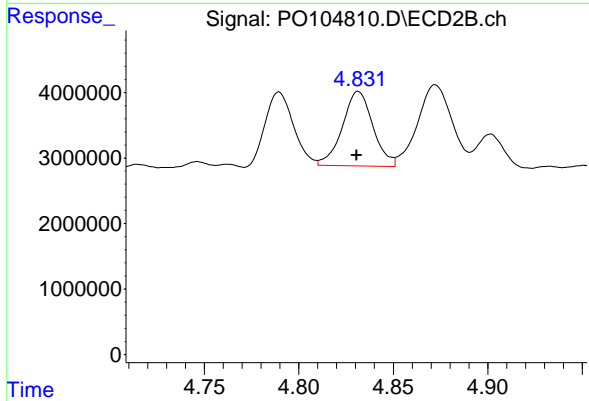
#21 AR-1248-1

R.T.: 4.597 min
 Delta R.T.: -0.002 min
 Response: 32153363
 Conc: 463.45 ng/ml



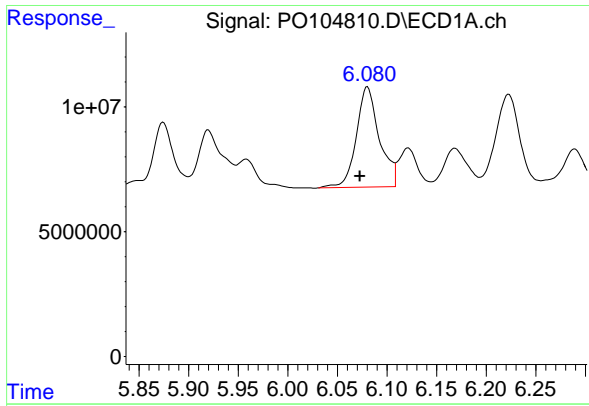
#22 AR-1248-2

R.T.: 5.874 min
 Delta R.T.: 0.007 min
 Response: 41807525
 Conc: 161.88 ng/ml



#22 AR-1248-2

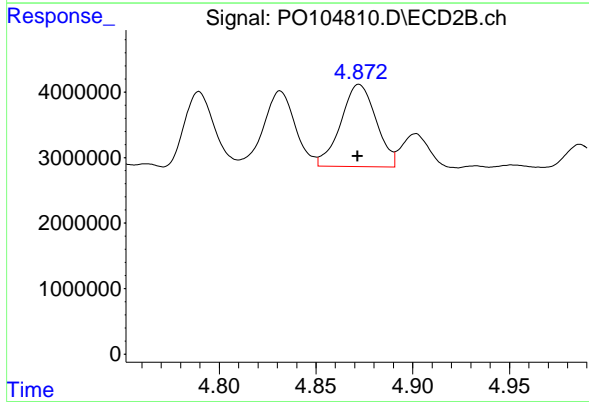
R.T.: 4.832 min
 Delta R.T.: 0.000 min
 Response: 12831816
 Conc: 135.85 ng/ml



#23 AR-1248-3

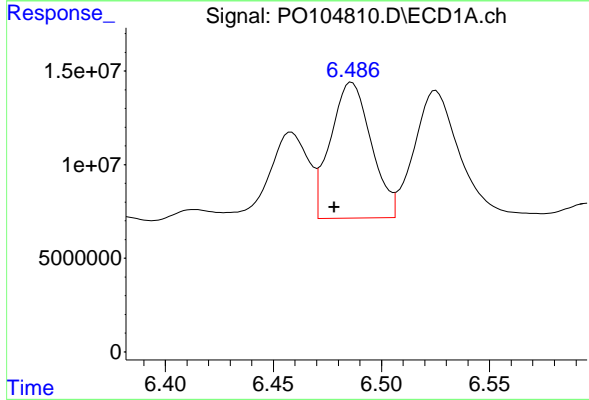
R.T.: 6.080 min
 Delta R.T.: 0.007 min
 Response: 64925182
 Conc: 236.42 ng/ml

Instrument :
 ECD_O
 ClientSampleId :
 SP-1-COMP



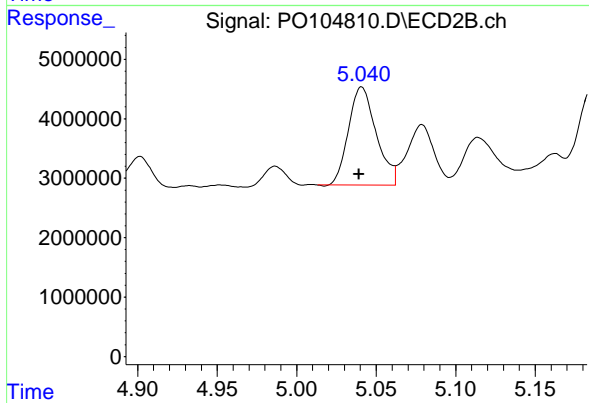
#23 AR-1248-3

R.T.: 4.872 min
 Delta R.T.: 0.000 min
 Response: 15907615
 Conc: 161.30 ng/ml



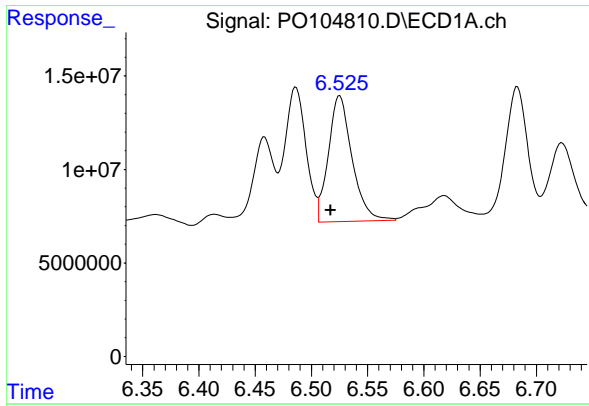
#24 AR-1248-4

R.T.: 6.486 min
 Delta R.T.: 0.008 min
 Response: 95029956
 Conc: 312.14 ng/ml



#24 AR-1248-4

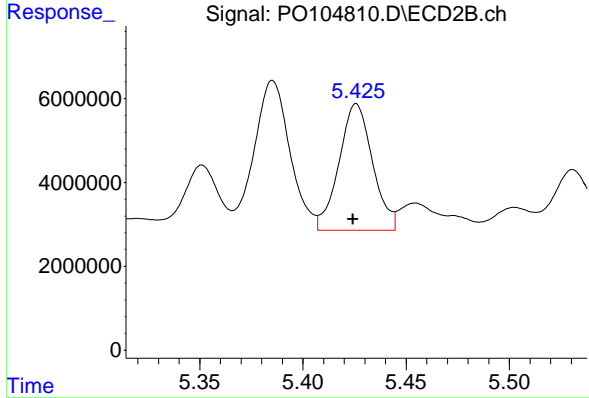
R.T.: 5.041 min
 Delta R.T.: 0.002 min
 Response: 20023923
 Conc: 175.15 ng/ml



#25 AR-1248-5

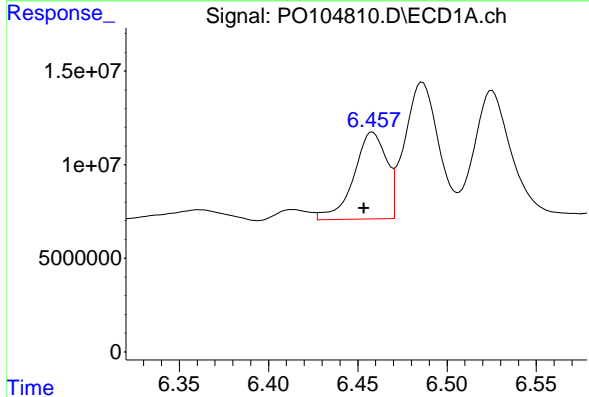
R.T.: 6.525 min
 Delta R.T.: 0.008 min
 Response: 98705515
 Conc: 335.51 ng/ml

Instrument :
 ECD_O
 ClientSampleId :
 SP-1-COMP



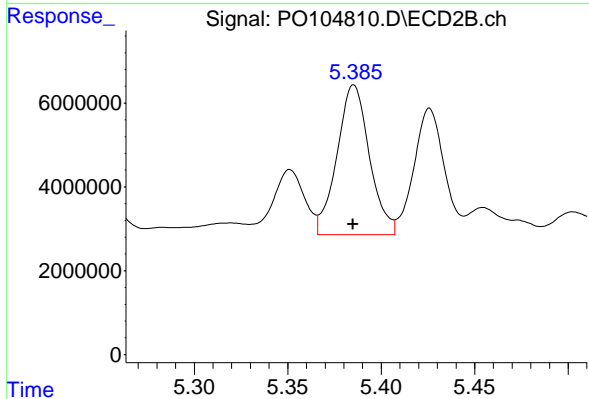
#25 AR-1248-5

R.T.: 5.426 min
 Delta R.T.: 0.002 min
 Response: 34191742
 Conc: 306.21 ng/ml



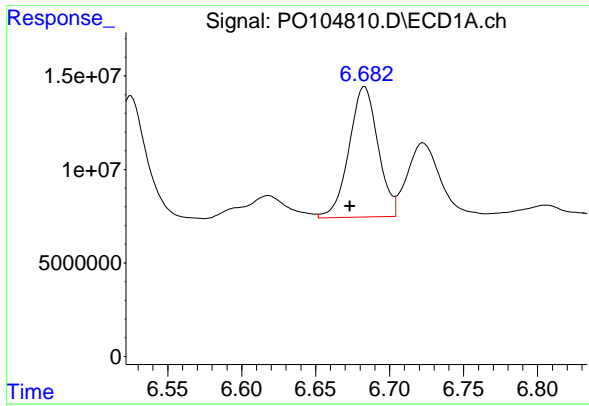
#26 AR-1254-1

R.T.: 6.458 min
 Delta R.T.: 0.005 min
 Response: 59131605
 Conc: 192.18 ng/ml



#26 AR-1254-1

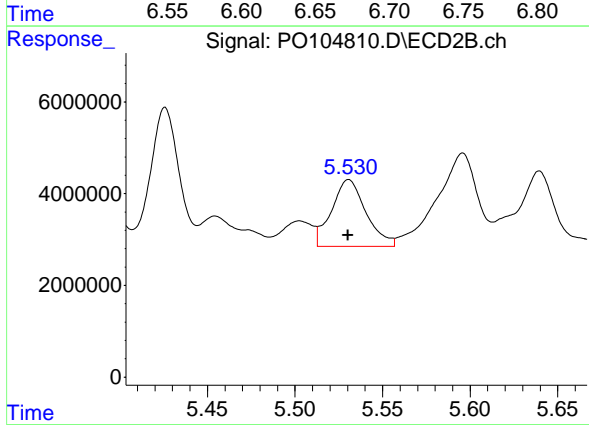
R.T.: 5.385 min
 Delta R.T.: 0.000 min
 Response: 43199756
 Conc: 256.28 ng/ml



#27 AR-1254-2

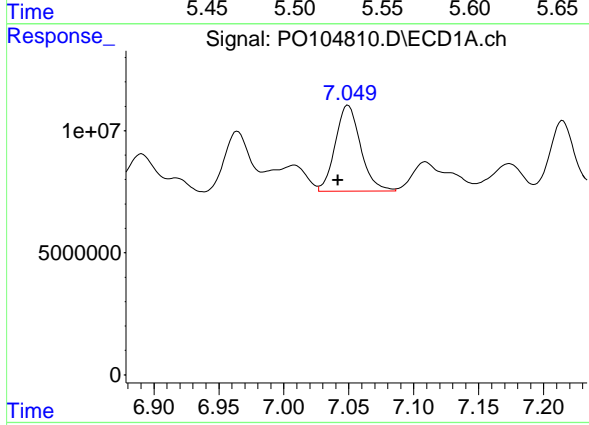
R.T.: 6.683 min
 Delta R.T.: 0.010 min
 Response: 95112513
 Conc: 212.73 ng/ml

Instrument :
 ECD_O
 ClientSampleId :
 SP-1-COMP



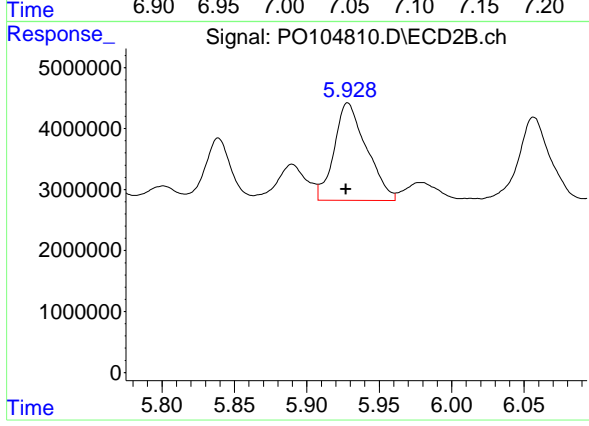
#27 AR-1254-2

R.T.: 5.531 min
 Delta R.T.: 0.000 min
 Response: 19903925
 Conc: 133.84 ng/ml



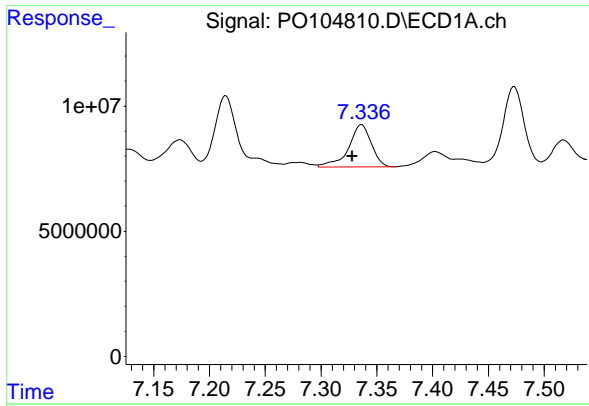
#28 AR-1254-3

R.T.: 7.049 min
 Delta R.T.: 0.008 min
 Response: 47921020
 Conc: 105.34 ng/ml



#28 AR-1254-3

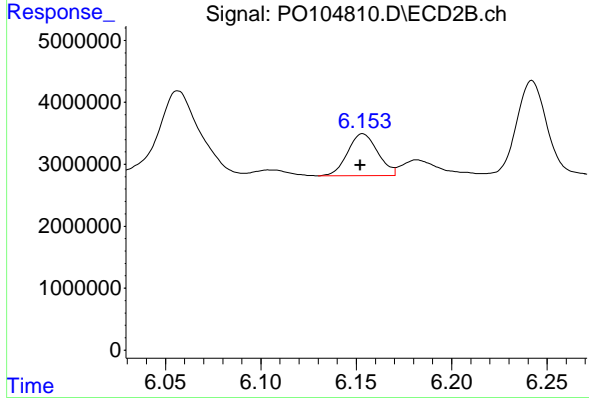
R.T.: 5.928 min
 Delta R.T.: 0.001 min
 Response: 24785141
 Conc: 107.61 ng/ml



#29 AR-1254-4

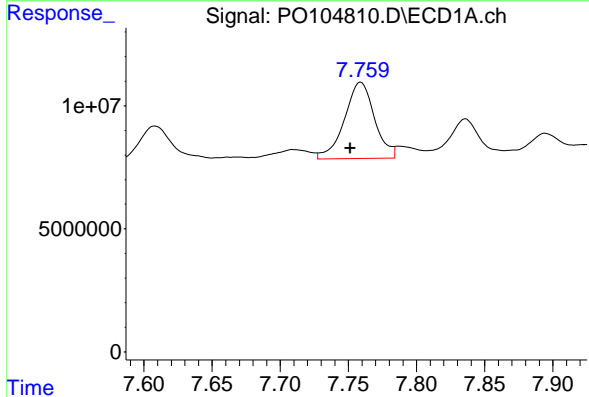
R.T.: 7.336 min
 Delta R.T.: 0.008 min
 Response: 24017856
 Conc: 71.23 ng/ml

Instrument :
 ECD_O
 ClientSampleId :
 SP-1-COMP



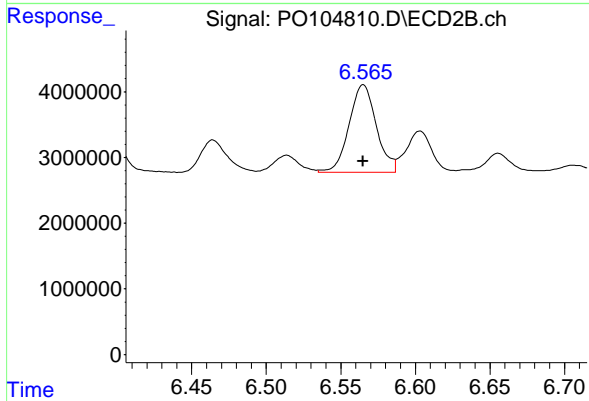
#29 AR-1254-4

R.T.: 6.153 min
 Delta R.T.: 0.001 min
 Response: 7475496
 Conc: 52.40 ng/ml



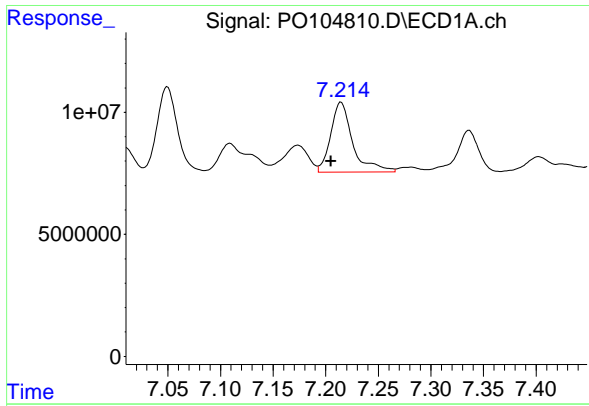
#30 AR-1254-5

R.T.: 7.759 min
 Delta R.T.: 0.008 min
 Response: 47801483
 Conc: 128.00 ng/ml



#30 AR-1254-5

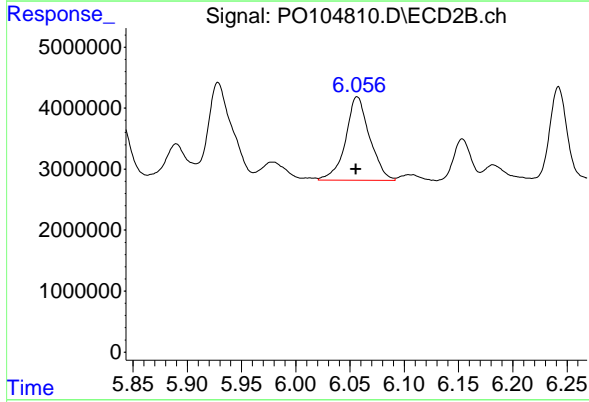
R.T.: 6.565 min
 Delta R.T.: 0.000 min
 Response: 17016377
 Conc: 84.80 ng/ml



#31 AR-1260-1

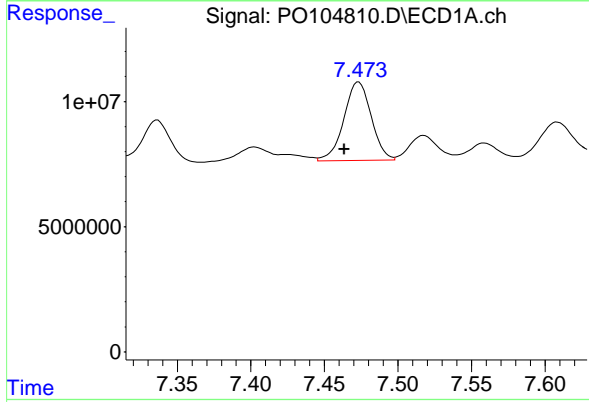
R.T.: 7.215 min
 Delta R.T.: 0.010 min
 Response: 42040543
 Conc: 116.46 ng/ml

Instrument :
 ECD_O
 ClientSampleId :
 SP-1-COMP



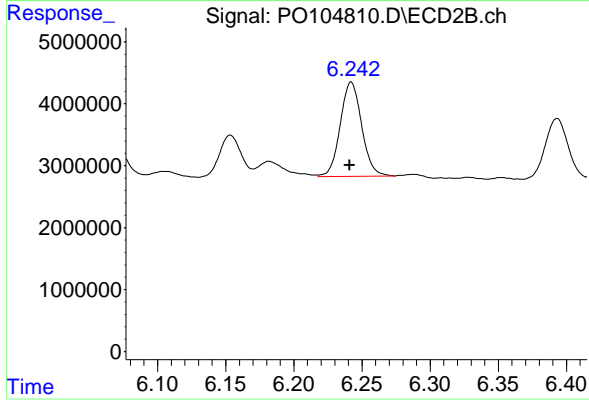
#31 AR-1260-1

R.T.: 6.057 min
 Delta R.T.: 0.001 min
 Response: 21179112
 Conc: 132.26 ng/ml



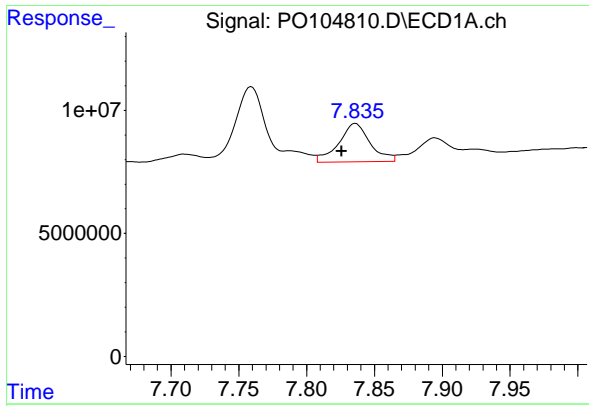
#32 AR-1260-2

R.T.: 7.473 min
 Delta R.T.: 0.010 min
 Response: 40577392
 Conc: 96.18 ng/ml



#32 AR-1260-2

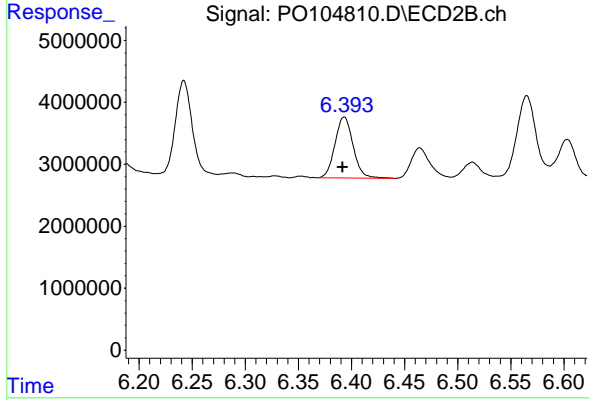
R.T.: 6.242 min
 Delta R.T.: 0.001 min
 Response: 16656381
 Conc: 86.70 ng/ml



#33 AR-1260-3

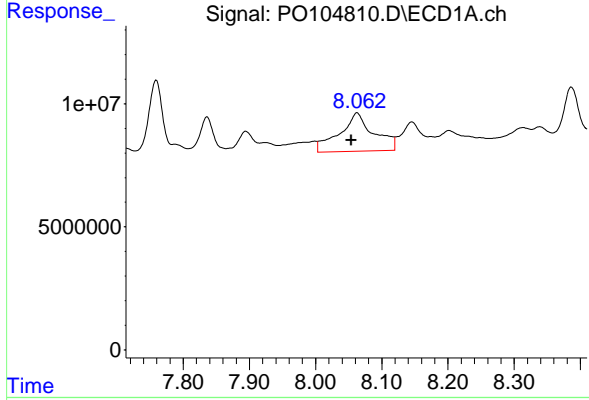
R.T.: 7.836 min
 Delta R.T.: 0.010 min
 Response: 25034679
 Conc: 84.74 ng/ml

Instrument :
 ECD_O
 ClientSampleId :
 SP-1-COMP



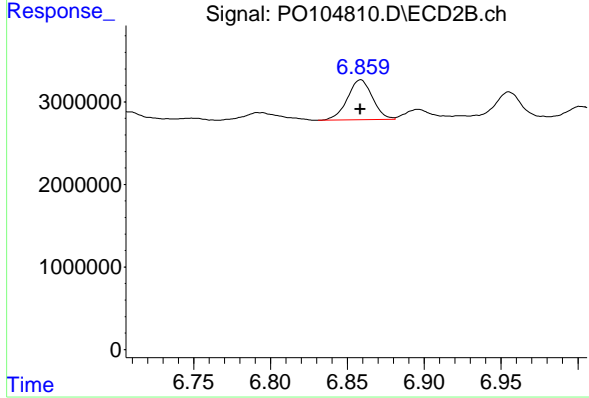
#33 AR-1260-3

R.T.: 6.393 min
 Delta R.T.: 0.001 min
 Response: 11756529
 Conc: 66.10 ng/ml



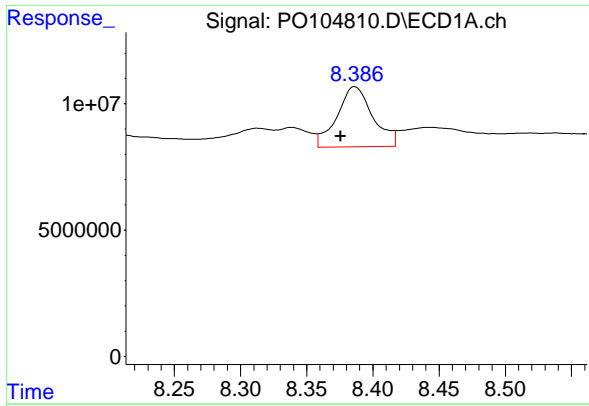
#34 AR-1260-4

R.T.: 8.063 min
 Delta R.T.: 0.009 min
 Response: 55914726
 Conc: 157.82 ng/ml



#34 AR-1260-4

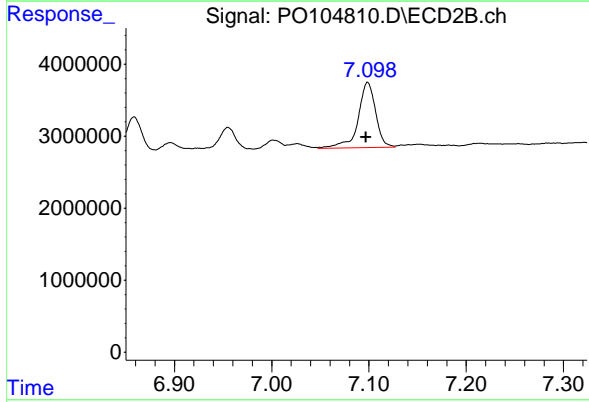
R.T.: 6.859 min
 Delta R.T.: 0.000 min
 Response: 5508698
 Conc: 41.12 ng/ml



#35 AR-1260-5

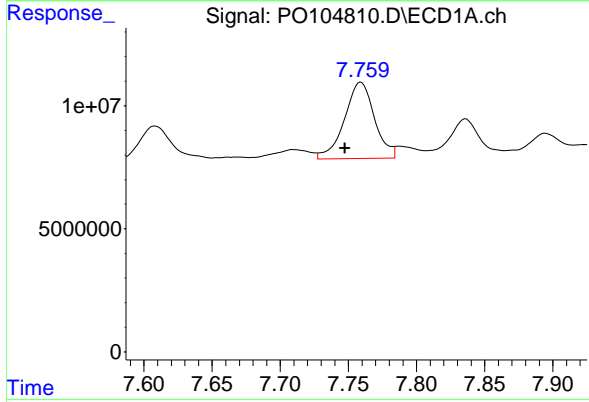
R.T.: 8.386 min
 Delta R.T.: 0.011 min
 Response: 44940166
 Conc: 68.95 ng/ml

Instrument :
 ECD_O
 ClientSampleId :
 SP-1-COMP



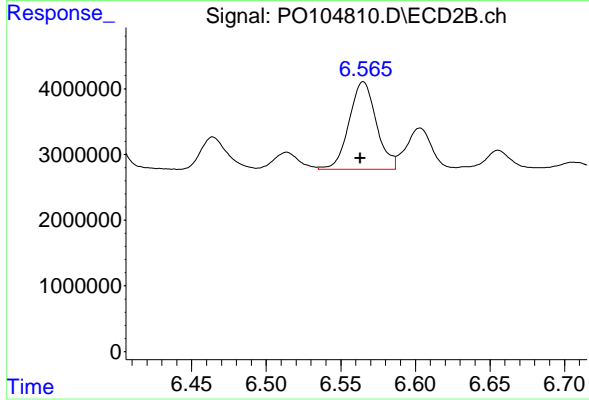
#35 AR-1260-5

R.T.: 7.099 min
 Delta R.T.: 0.002 min
 Response: 11339809
 Conc: 37.05 ng/ml



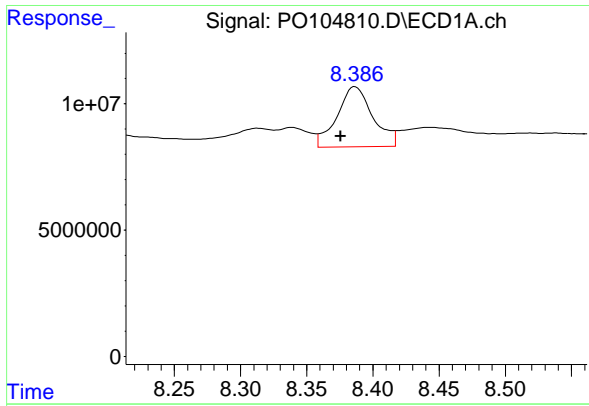
#36 AR-1262-1

R.T.: 7.759 min
 Delta R.T.: 0.012 min
 Response: 47801483
 Conc: 154.85 ng/ml



#36 AR-1262-1

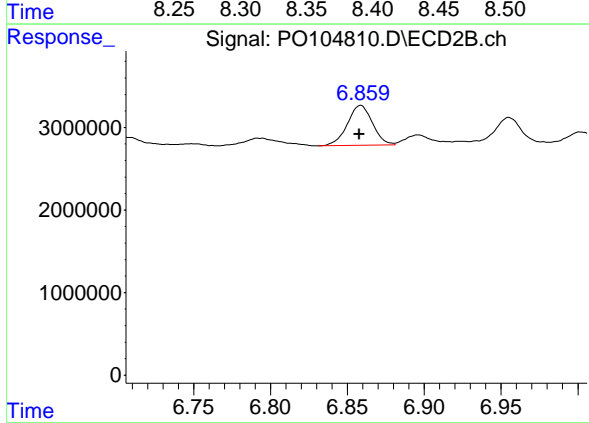
R.T.: 6.565 min
 Delta R.T.: 0.002 min
 Response: 17016377
 Conc: 150.32 ng/ml



#37 AR-1262-2

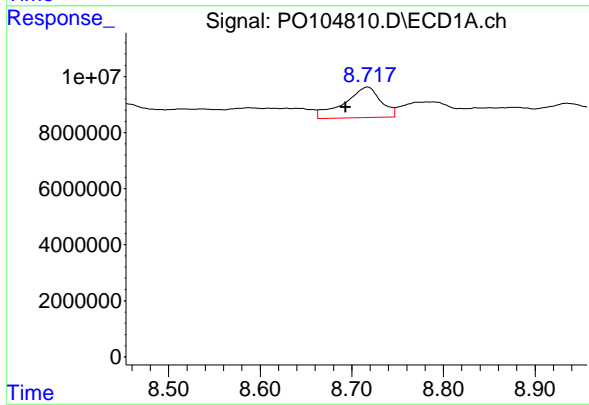
R.T.: 8.386 min
 Delta R.T.: 0.011 min
 Response: 44940166
 Conc: 56.79 ng/ml

Instrument :
 ECD_O
 ClientSampleId :
 SP-1-COMP



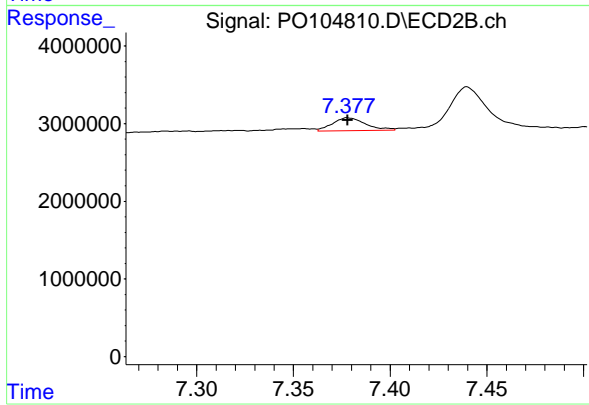
#37 AR-1262-2

R.T.: 6.859 min
 Delta R.T.: 0.000 min
 Response: 5508698
 Conc: 29.83 ng/ml



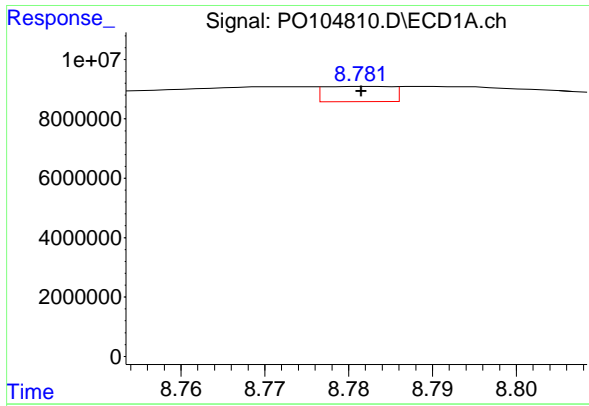
#38 AR-1262-3

R.T.: 8.717 min
 Delta R.T.: 0.024 min
 Response: 30527263
 Conc: 56.67 ng/ml



#38 AR-1262-3

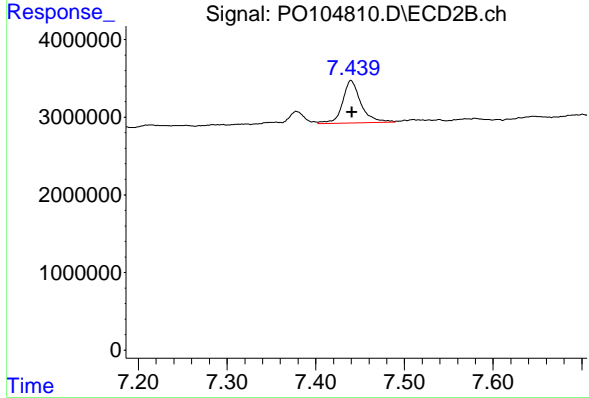
R.T.: 7.378 min
 Delta R.T.: 0.000 min
 Response: 1978387
 Conc: 14.17 ng/ml



#39 AR-1262-4

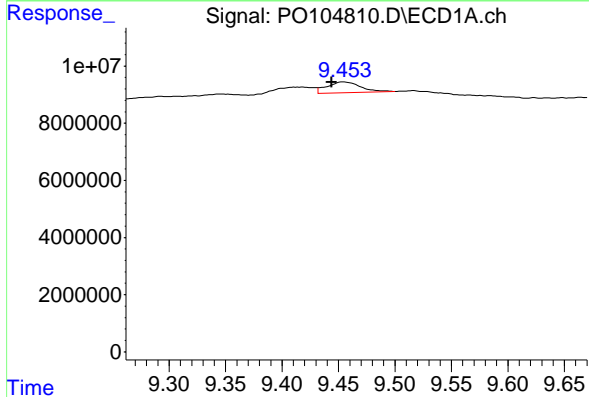
R.T.: 8.782 min
 Delta R.T.: 0.000 min
 Response: 2884816
 Conc: 7.08 ng/ml

Instrument :
 ECD_O
 ClientSampleId :
 SP-1-COMP



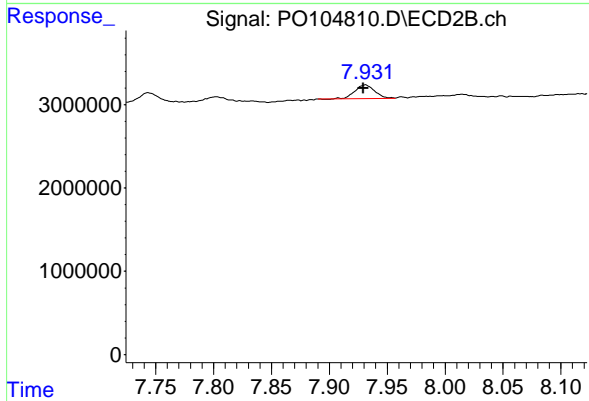
#39 AR-1262-4

R.T.: 7.440 min
 Delta R.T.: -0.001 min
 Response: 7898414
 Conc: 30.64 ng/ml



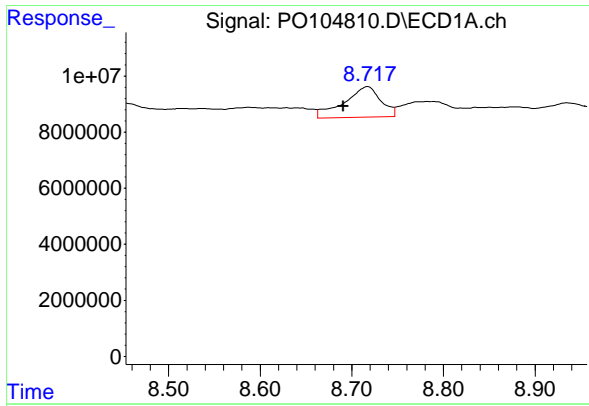
#40 AR-1262-5

R.T.: 9.454 min
 Delta R.T.: 0.010 min
 Response: 7973994
 Conc: 28.55 ng/ml



#40 AR-1262-5

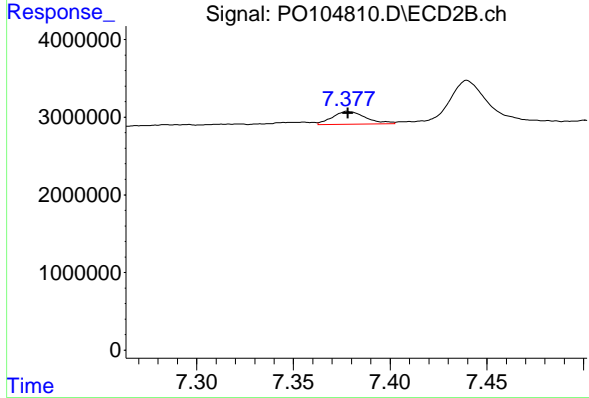
R.T.: 7.931 min
 Delta R.T.: 0.002 min
 Response: 1953602
 Conc: 17.13 ng/ml



#41 AR-1268-1

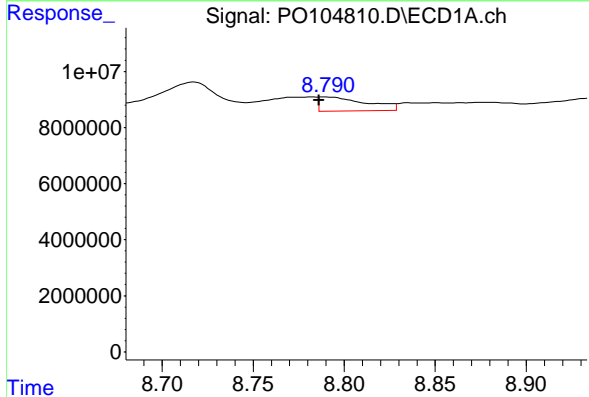
R.T.: 8.717 min
 Delta R.T.: 0.027 min
 Response: 30527263
 Conc: 35.02 ng/ml

Instrument :
 ECD_O
 ClientSampleId :
 SP-1-COMP



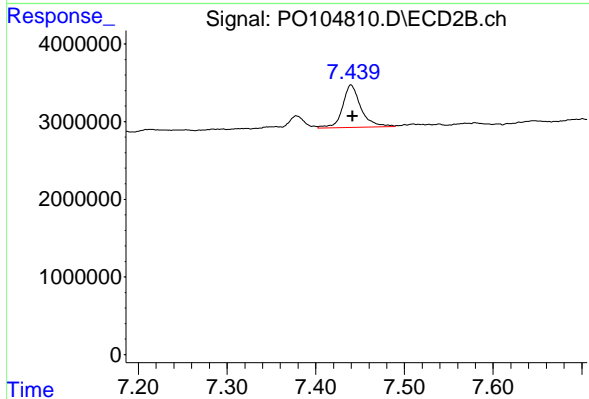
#41 AR-1268-1

R.T.: 7.378 min
 Delta R.T.: 0.000 min
 Response: 1978387
 Conc: 5.18 ng/ml



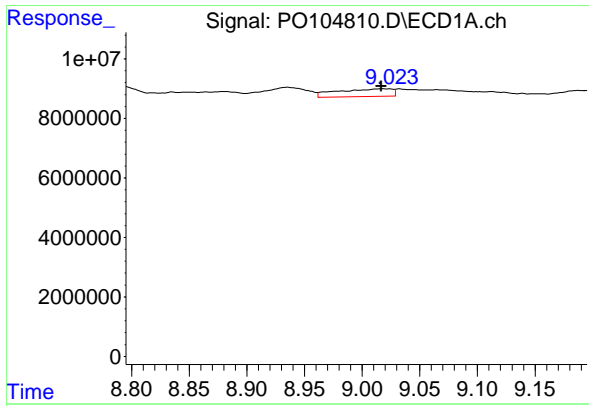
#42 AR-1268-2

R.T.: 8.790 min
 Delta R.T.: 0.004 min
 Response: 9051970
 Conc: 11.32 ng/ml



#42 AR-1268-2

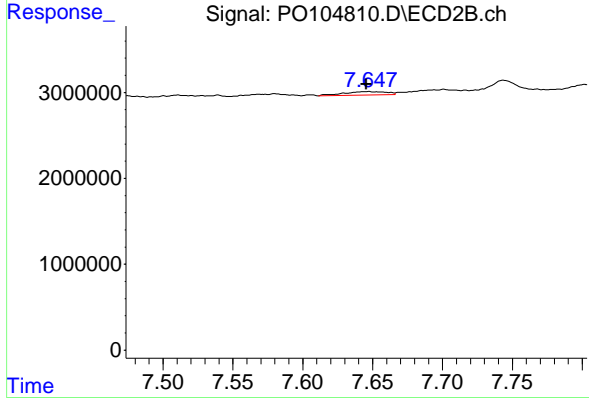
R.T.: 7.440 min
 Delta R.T.: -0.002 min
 Response: 7898414
 Conc: 23.19 ng/ml



#43 AR-1268-3

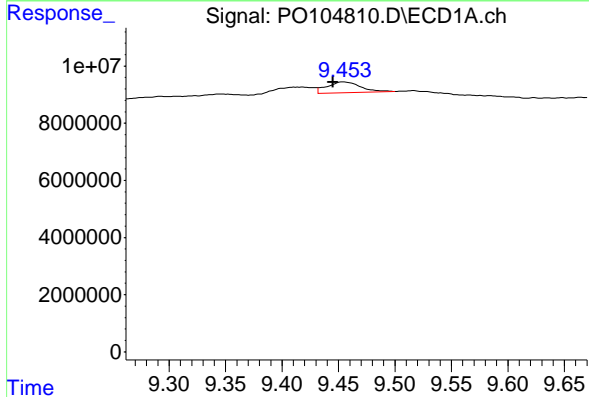
R.T.: 9.024 min
 Delta R.T.: 0.007 min
 Response: 8558616
 Conc: 12.88 ng/ml

Instrument :
 ECD_O
 ClientSampleId :
 SP-1-COMP



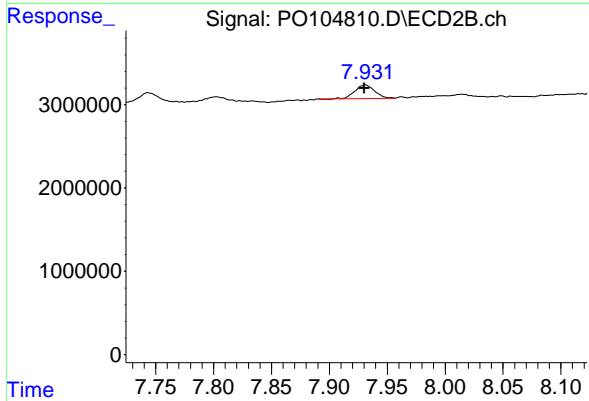
#43 AR-1268-3

R.T.: 7.646 min
 Delta R.T.: 0.000 min
 Response: 903858
 Conc: 3.28 ng/ml



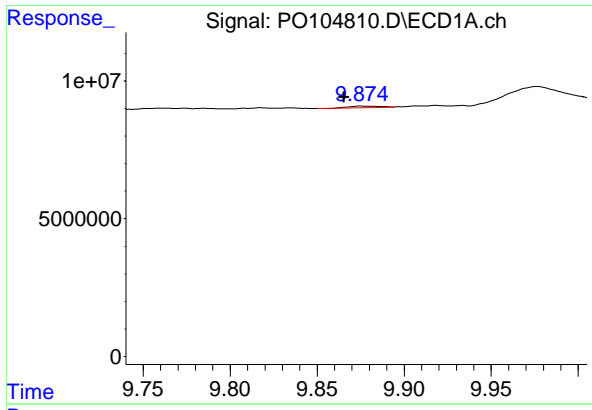
#44 AR-1268-4

R.T.: 9.454 min
 Delta R.T.: 0.009 min
 Response: 7973994
 Conc: 27.92 ng/ml



#44 AR-1268-4

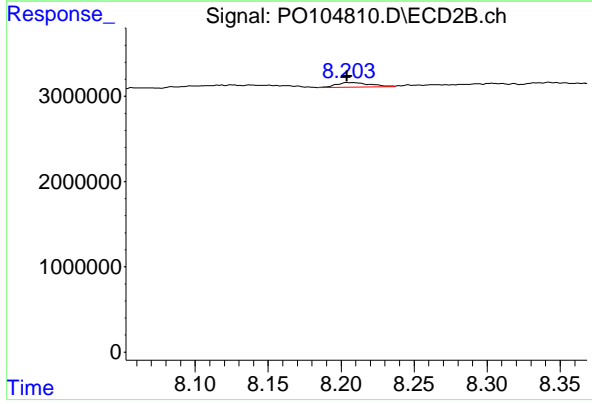
R.T.: 7.931 min
 Delta R.T.: 0.000 min
 Response: 1953602
 Conc: 16.55 ng/ml



#45 AR-1268-5

R.T.: 9.875 min
 Delta R.T.: 0.010 min
 Response: 696603
 Conc: 0.33 ng/ml

Instrument :
 ECD_O
 ClientSampleId :
 SP-1-COMP



#45 AR-1268-5

R.T.: 8.205 min
 Delta R.T.: 0.000 min
 Response: 834224
 Conc: 1.07 ng/ml