

Data Path : Z:\pestpcbsrv\HPCHEM1\ECD\_0\Data\P0071824\  
 Data File : PO104821.D  
 Signal(s) : Signal #1: ECD1A.ch Signal #2: ECD2B.ch  
 Acq On : 18 Jul 2024 10:02  
 Operator : YP/AJ  
 Sample : AR1242CCC500  
 Misc :  
 ALS Vial : 4 Sample Multiplier: 1

Instrument :  
 ECD\_0  
 ClientSampleId :  
 AR1242CCC500

Integration File signal 1: autoint1.e  
 Integration File signal 2: autoint2.e  
 Quant Time: Jul 18 14:03:29 2024  
 Quant Method : Z:\pestpcbsrv\HPCHEM1\ECD\_0\methods\P0070224.M  
 Quant Title : GC EXTRACTABLES  
 QLast Update : Tue Jul 02 16:29:20 2024  
 Response via : Initial Calibration  
 Integrator: ChemStation

Volume Inj. : 2 µl  
 Signal #1 Phase : ZB-MR2 Signal #2 Phase: ZB-MR2  
 Signal #1 Info : 30Mx0.32mmx 0.50µ Signal #2 Info : 30M x 0.32mm x 0.25µm

Compound	RT#1	RT#2	Resp#1	Resp#2	ng/ml	ng/ml
System Monitoring Compounds						
1) SA Tetrachlo...	4.434	3.543	467.7E6	174.8E6	52.235	53.578
2) SA Decachlor...	10.227	8.443	276.7E6	100.5E6	45.113	47.921
Target Compounds						
3) L1 AR-1016-1	5.605	4.600	123.6E6	47854868	415.381	421.958
4) L1 AR-1016-2	5.605	4.618	123.6E6	66430537	296.873	427.553 #
5) L1 AR-1016-3	5.690	4.790	104.6E6	36008809	409.977	436.231
6) L1 AR-1016-4	5.789	4.831	89406913	28243285	417.160	434.486
7) L1 AR-1016-5	6.085	5.040	88591394	39377196	424.177	445.507
8) L2 AR-1221-1	4.637	3.750	16017369	4975235	134.601	122.493
9) L2 AR-1221-2	4.729	3.834	24884899	8333785	282.483	258.648
10) L2 AR-1221-3	4.804	3.908	72334086	27779874	290.268	291.101
11) L3 AR-1232-1	4.804	3.908	72334086	27779874	351.402	352.774
12) L3 AR-1232-2	5.336	4.618	92044378	66430537	811.068	912.640
13) L3 AR-1232-3	5.605	4.790	123.6E6	36008809	634.909	917.699 #
14) L3 AR-1232-4	5.789	4.872	89406913	35937568	902.279	1009.240
15) L3 AR-1232-5	5.880	5.040	77056891	39377196	983.708	981.724
16) L4 AR-1242-1	5.605	4.600	123.6E6	47854868	521.419	536.679
17) L4 AR-1242-2	5.605	4.618	123.6E6	66430537	378.638	546.925 #
18) L4 AR-1242-3	5.690	4.790	104.6E6	36008809	509.284	550.948
19) L4 AR-1242-4	5.789	4.872	89406913	35937568	522.598	543.608
20) L4 AR-1242-5	6.531	5.385	92267028	44502991	513.936	532.745
21) L5 AR-1248-1	5.605	4.600	123.6E6	47854868	677.409	689.766
22) L5 AR-1248-2	5.880	4.831	77056891	28243285	298.358	299.012
23) L5 AR-1248-3	6.085	4.872	88591394	35937568	322.596	364.403
24) L5 AR-1248-4	6.492	5.040	88908338	39377196	292.029	344.430
25) L5 AR-1248-5	6.531	5.426	92267028	36538729	313.625	327.234
26) L6 AR-1254-1	6.464	5.385	68102246	44502991	221.332	264.013
27) L6 AR-1254-2	6.689	5.530	76073446	12412353	170.143	83.465 #
28) L6 AR-1254-3	7.055	5.928	31176820	15451753	68.535	67.085
29) L6 AR-1254-4	7.342	6.153	25850301	10785747	76.664	75.599
30) L6 AR-1254-5	7.767	6.566	45226115	5132949	121.103	25.579 #
31) L7 AR-1260-1	7.223	6.045	6694461	3305533	18.544	20.643
32) L7 AR-1260-2	7.477	6.242	15160485	2535696	35.933	13.199 #
33) L7 AR-1260-3	7.867f	6.392	114.0E6	3172825	386.022	17.839 #
34) L7 AR-1260-4	8.049	6.859	87745222	439880	247.662	3.283 #
35) L7 AR-1260-5	8.394	7.099	22078160	1042380	33.875	3.406 #
36) L8 AR-1262-1	7.767	6.566	45226115	5132949	146.508	45.343 #
37) L8 AR-1262-2	8.394	6.859	22078160	439880	27.902	2.382 #
38) L8 AR-1262-3	8.724	7.397	17904952	882168	33.240	6.321 #
39) L8 AR-1262-4	8.798	7.443	9027898	1545493	22.149	5.995 #
40) L8 AR-1262-5	9.453	7.931	584416	291661	2.093	2.557
41) L9 AR-1268-1	8.661	7.397	2663488	882168	3.056	2.311

Data Path : Z:\pestpcbsrv\HPCHEM1\ECD\_0\Data\P0071824\  
 Data File : P0104821.D  
 Signal(s) : Signal #1: ECD1A.ch Signal #2: ECD2B.ch  
 Acq On : 18 Jul 2024 10:02  
 Operator : YP/AJ  
 Sample : AR1242CCC500  
 Misc :  
 ALS Vial : 4 Sample Multiplier: 1

Instrument :  
 ECD\_0  
 ClientSampleId :  
 AR1242CCC500

Integration File signal 1: autoint1.e  
 Integration File signal 2: autoint2.e  
 Quant Time: Jul 18 14:03:29 2024  
 Quant Method : Z:\pestpcbsrv\HPCHEM1\ECD\_0\methods\P0070224.M  
 Quant Title : GC EXTRACTABLES  
 QLast Update : Tue Jul 02 16:29:20 2024  
 Response via : Initial Calibration  
 Integrator: ChemStation

Volume Inj. : 2 µl  
 Signal #1 Phase : ZB-MR1 Signal #2 Phase: ZB-MR2  
 Signal #1 Info : 30Mx0.32mmx 0.50µ Signal #2 Info : 30M x 0.32mm x 0.25µm

	Compound	RT#1	RT#2	Resp#1	Resp#2	ng/ml	ng/ml
42)	L9 AR-1268-2	8.798	7.443	9027898	1545493	11.290	4.538 #
43)	L9 AR-1268-3	9.011	7.649	2334854	955400	3.515	3.469
44)	L9 AR-1268-4	9.453	7.931	584416	291661	2.046	2.471
45)	L9 AR-1268-5	9.828f	8.202	274472	735934	0.130	0.943 #

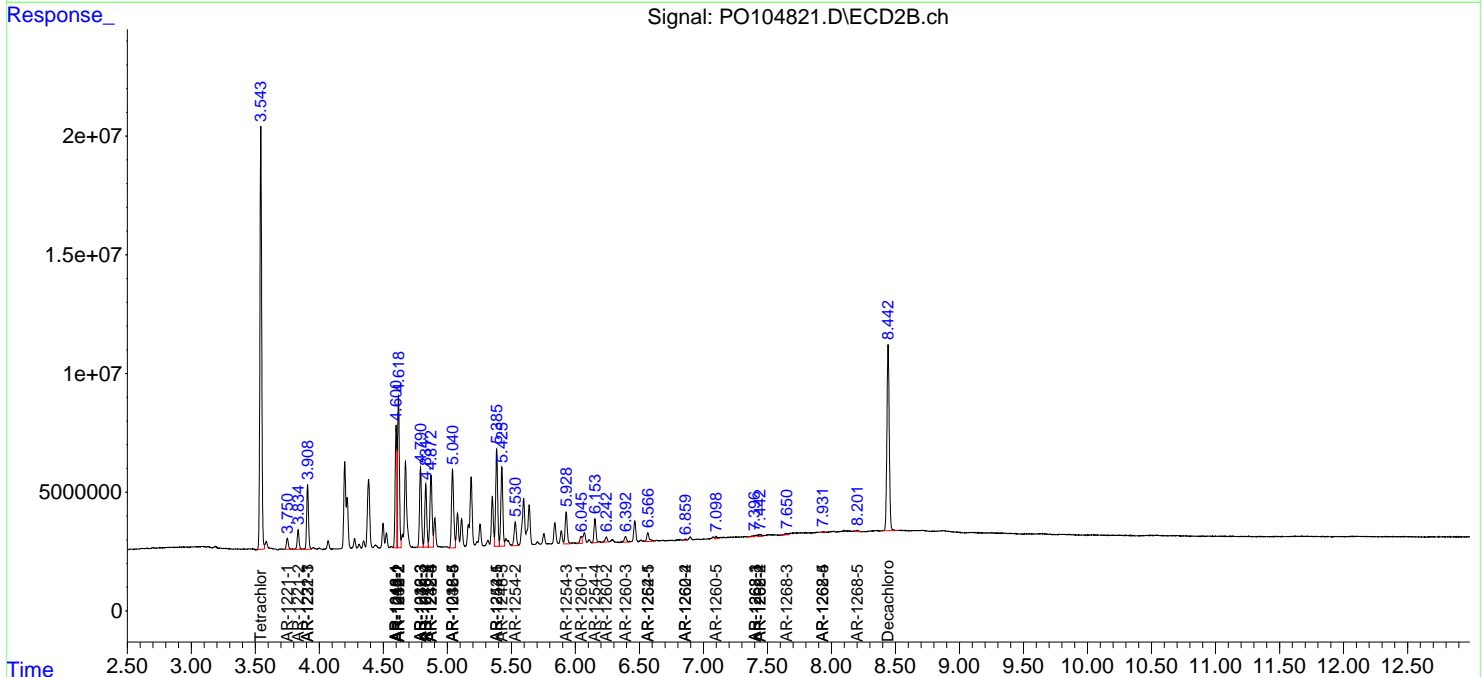
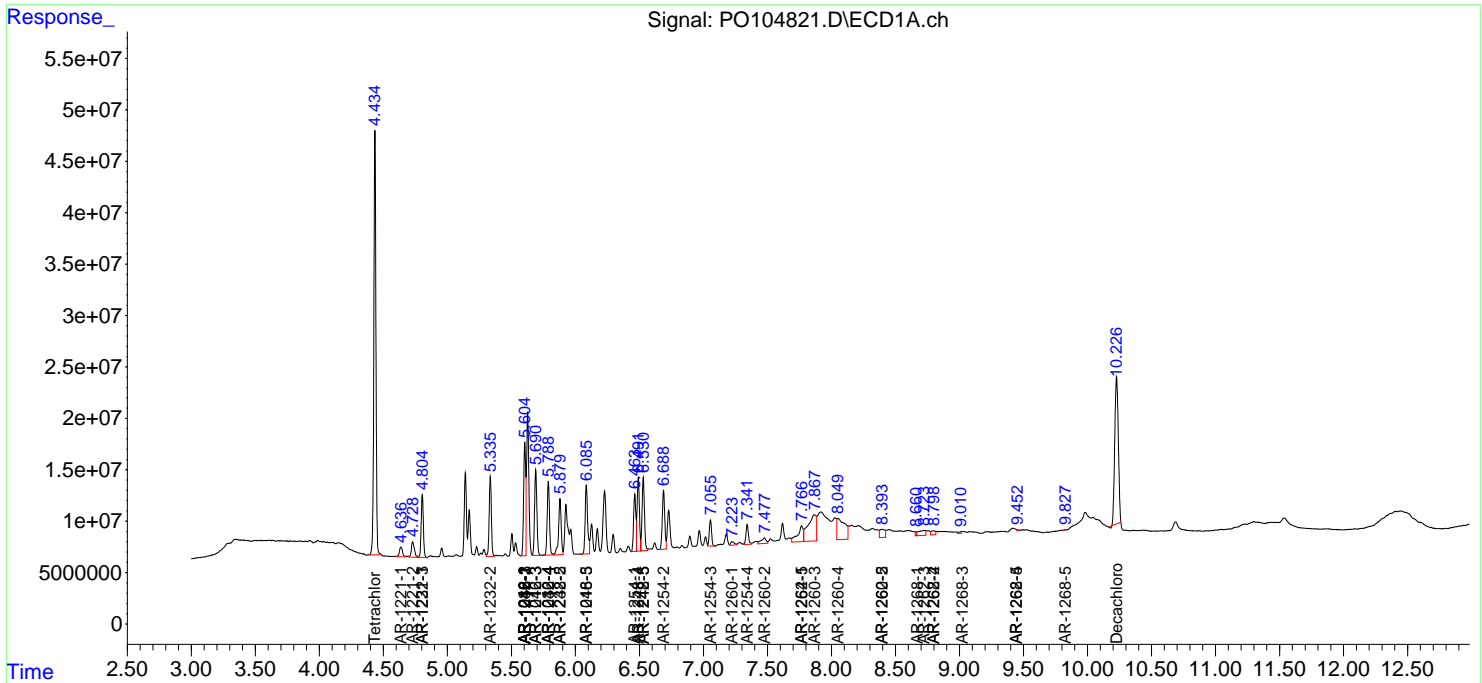
(f)=RT Delta > 1/2 Window (#)=Amounts differ by > 25% (m)=manual int.

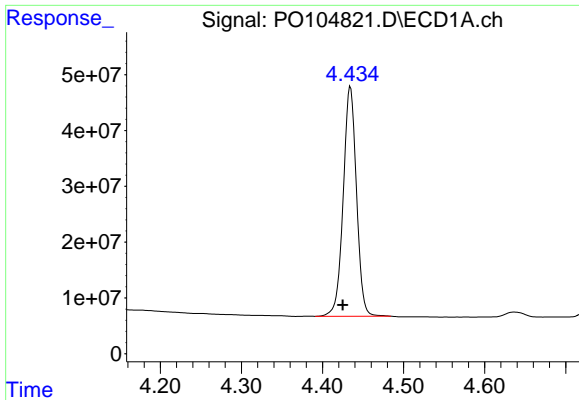
Data Path : Z:\pestpcbsrv\HPCHEM1\ECD\_O\Data\PO071824\  
 Data File : PO104821.D  
 Signal(s) : Signal #1: ECD1A.ch Signal #2: ECD2B.ch  
 Acq On : 18 Jul 2024 10:02  
 Operator : YP/AJ  
 Sample : AR1242CCC500  
 Misc :  
 ALS Vial : 4 Sample Multiplier: 1

**Instrument :**  
 ECD\_O  
**ClientSampleId :**  
 AR1242CCC500

Integration File signal 1: autoint1.e  
 Integration File signal 2: autoint2.e  
 Quant Time: Jul 18 14:03:29 2024  
 Quant Method : Z:\pestpcbsrv\HPCHEM1\ECD\_O\methods\PO070224.M  
 Quant Title : GC EXTRACTABLES  
 QLast Update : Tue Jul 02 16:29:20 2024  
 Response via : Initial Calibration  
 Integrator: ChemStation

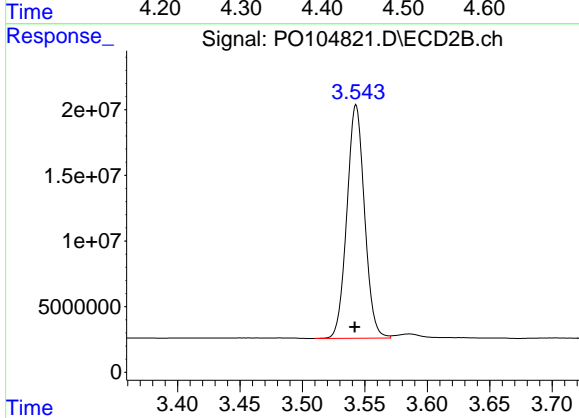
Volume Inj. : 2 µl  
 Signal #1 Phase : ZB-MR1 Signal #2 Phase: ZB-MR2  
 Signal #1 Info : 30Mx0.32mmx 0.50µ Signal #2 Info : 30M x 0.32mm x 0.25µm



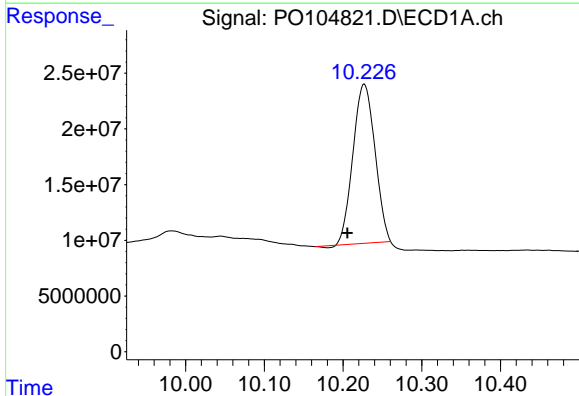


#1 Tetrachloro-m-xylene  
 R.T.: 4.434 min  
 Delta R.T.: 0.009 min  
 Response: 467678944  
 Conc: 52.23 ng/ml

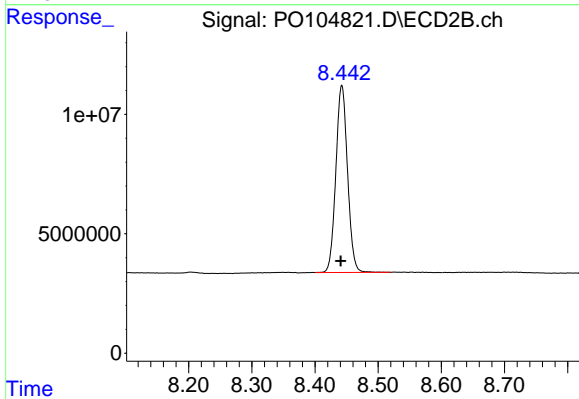
Instrument :  
 ECD\_O  
 ClientSampleId :  
 AR1242CCC500



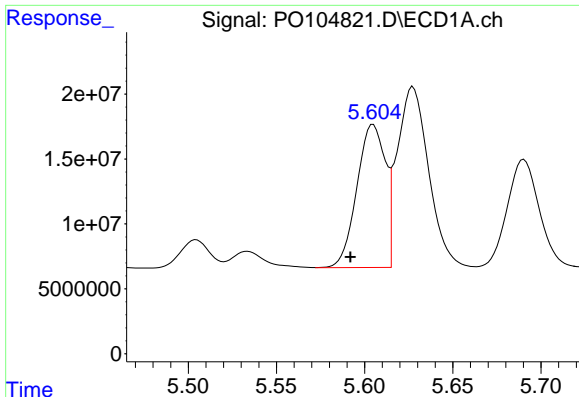
#1 Tetrachloro-m-xylene  
 R.T.: 3.543 min  
 Delta R.T.: 0.001 min  
 Response: 174802247  
 Conc: 53.58 ng/ml



#2 Decachlorobiphenyl  
 R.T.: 10.227 min  
 Delta R.T.: 0.022 min  
 Response: 276659137  
 Conc: 45.11 ng/ml



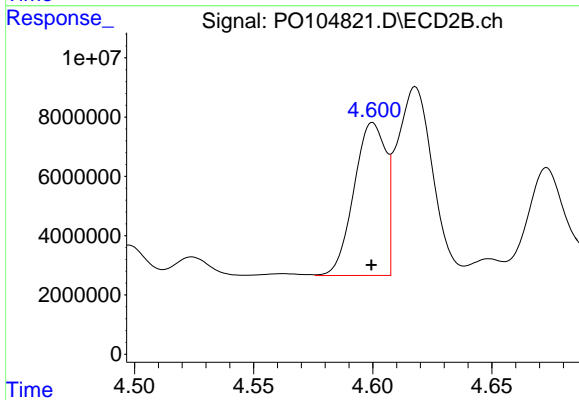
#2 Decachlorobiphenyl  
 R.T.: 8.443 min  
 Delta R.T.: 0.002 min  
 Response: 100494907  
 Conc: 47.92 ng/ml



#3 AR-1016-1

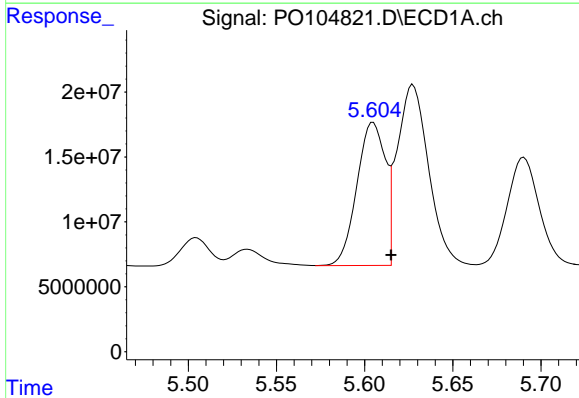
R.T.: 5.605 min  
 Delta R.T.: 0.013 min  
 Response: 123586937  
 Conc: 415.38 ng/ml

Instrument :  
 ECD\_O  
 ClientSampleId :  
 AR1242CCC500



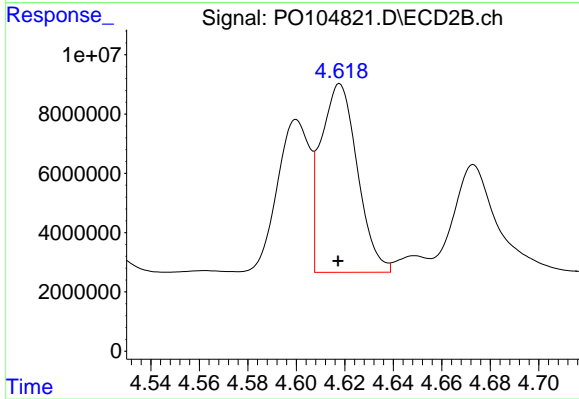
#3 AR-1016-1

R.T.: 4.600 min  
 Delta R.T.: 0.000 min  
 Response: 47854868  
 Conc: 421.96 ng/ml



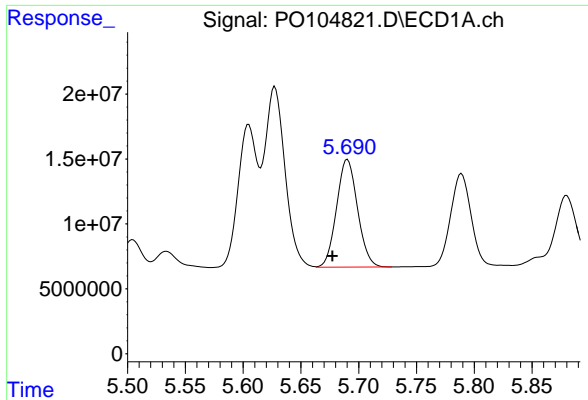
#4 AR-1016-2

R.T.: 5.605 min  
 Delta R.T.: -0.010 min  
 Response: 123586937  
 Conc: 296.87 ng/ml



#4 AR-1016-2

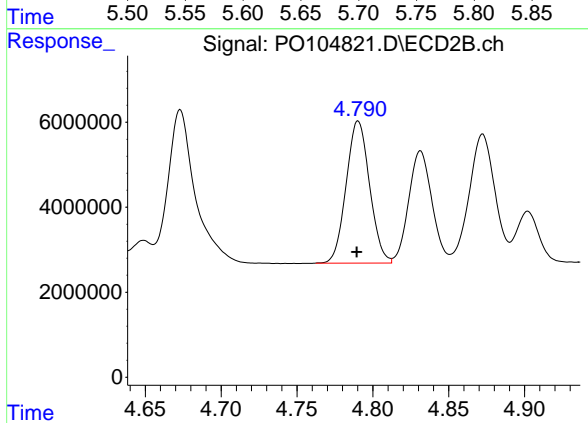
R.T.: 4.618 min  
 Delta R.T.: 0.000 min  
 Response: 66430537  
 Conc: 427.55 ng/ml



#5 AR-1016-3

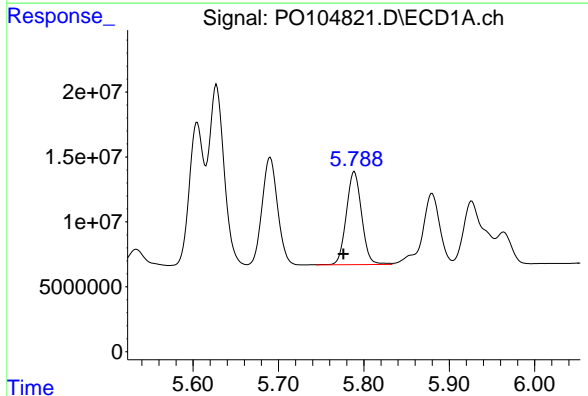
R.T.: 5.690 min  
 Delta R.T.: 0.013 min  
 Response: 104561762  
 Conc: 409.98 ng/ml

Instrument :  
 ECD\_O  
 ClientSampleId :  
 AR1242CCC500



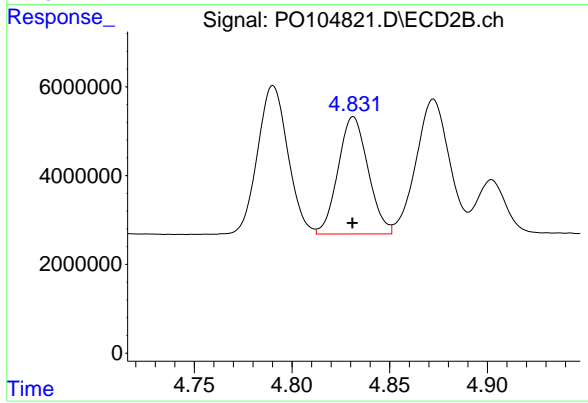
#5 AR-1016-3

R.T.: 4.790 min  
 Delta R.T.: 0.001 min  
 Response: 36008809  
 Conc: 436.23 ng/ml



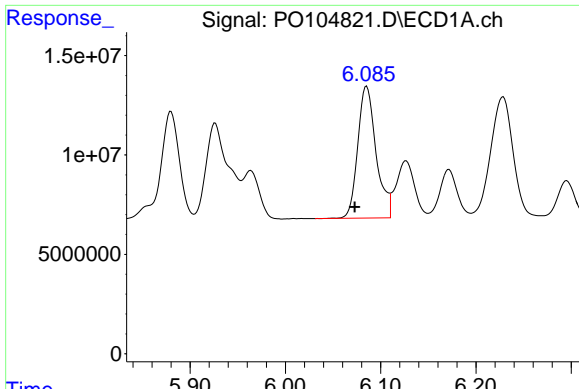
#6 AR-1016-4

R.T.: 5.789 min  
 Delta R.T.: 0.013 min  
 Response: 89406913  
 Conc: 417.16 ng/ml



#6 AR-1016-4

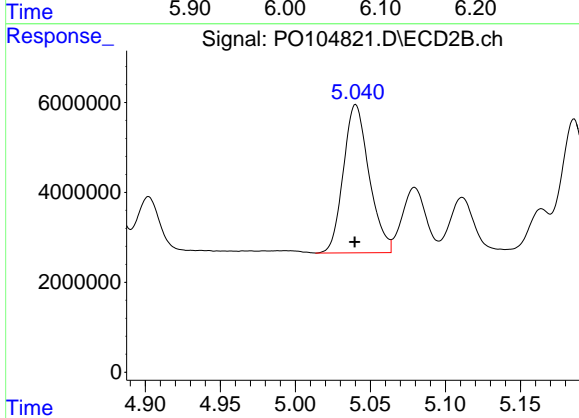
R.T.: 4.831 min  
 Delta R.T.: 0.000 min  
 Response: 28243285  
 Conc: 434.49 ng/ml



#7 AR-1016-5

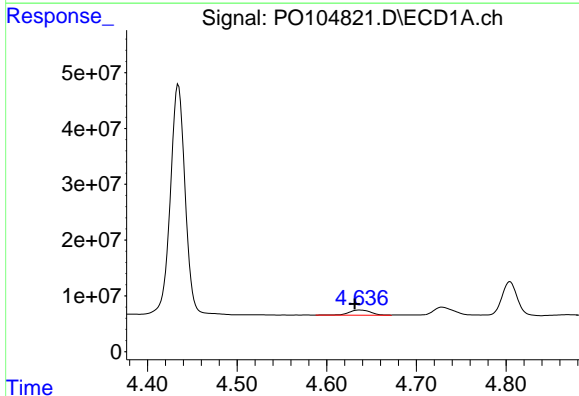
R.T.: 6.085 min  
 Delta R.T.: 0.013 min  
 Response: 88591394  
 Conc: 424.18 ng/ml

Instrument :  
 ECD\_O  
 ClientSampleId :  
 AR1242CCC500



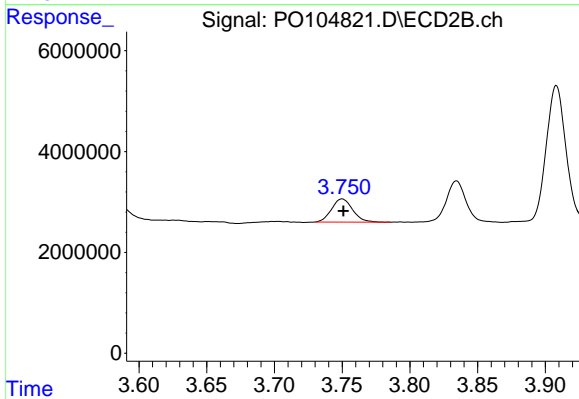
#7 AR-1016-5

R.T.: 5.040 min  
 Delta R.T.: 0.000 min  
 Response: 39377196  
 Conc: 445.51 ng/ml



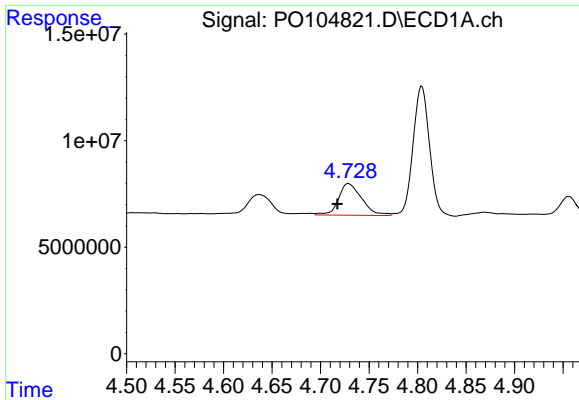
#8 AR-1221-1

R.T.: 4.637 min  
 Delta R.T.: 0.006 min  
 Response: 16017369  
 Conc: 134.60 ng/ml



#8 AR-1221-1

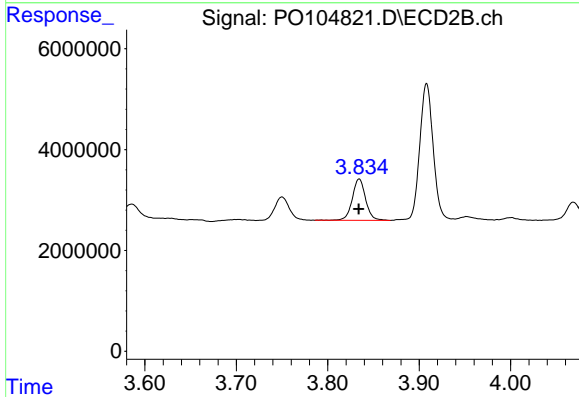
R.T.: 3.750 min  
 Delta R.T.: -0.001 min  
 Response: 4975235  
 Conc: 122.49 ng/ml



#9 AR-1221-2

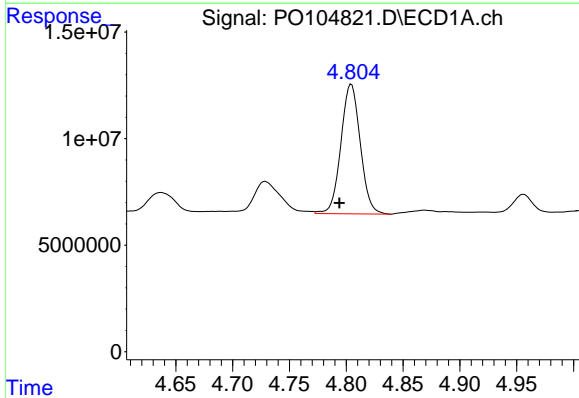
R.T.: 4.729 min  
 Delta R.T.: 0.012 min  
 Response: 24884899  
 Conc: 282.48 ng/ml

Instrument :  
 ECD\_O  
 ClientSampleId :  
 AR1242CCC500



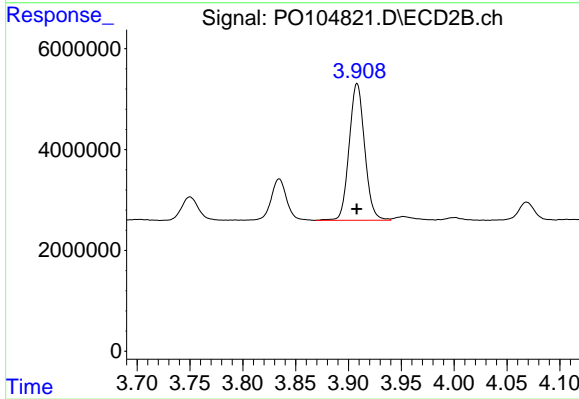
#9 AR-1221-2

R.T.: 3.834 min  
 Delta R.T.: 0.000 min  
 Response: 8333785  
 Conc: 258.65 ng/ml



#10 AR-1221-3

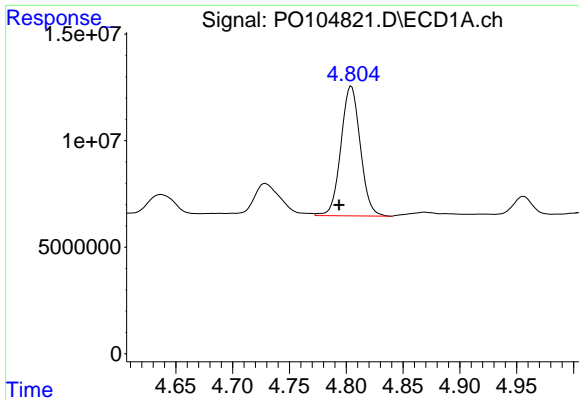
R.T.: 4.804 min  
 Delta R.T.: 0.010 min  
 Response: 72334086  
 Conc: 290.27 ng/ml



#10 AR-1221-3

R.T.: 3.908 min  
 Delta R.T.: 0.000 min  
 Response: 27779874  
 Conc: 291.10 ng/ml

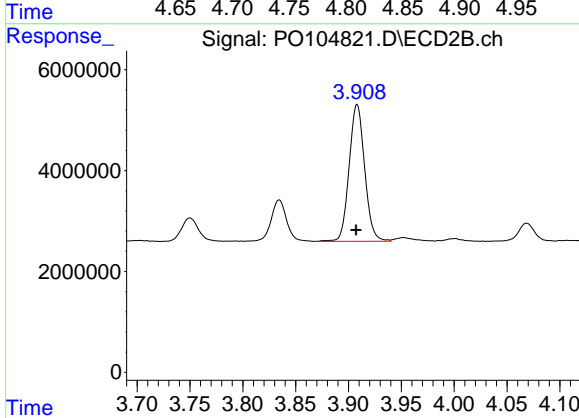




#11 AR-1232-1

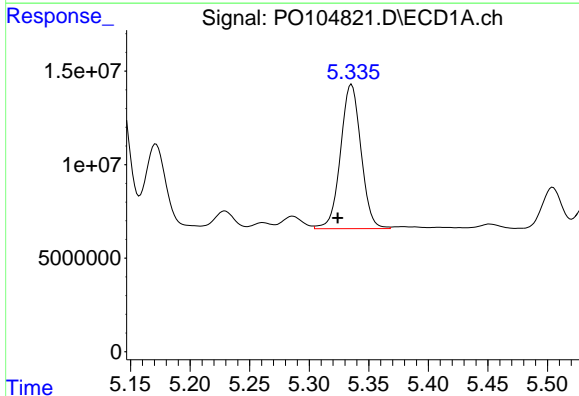
R.T.: 4.804 min  
 Delta R.T.: 0.011 min  
 Response: 72334086  
 Conc: 351.40 ng/ml

Instrument :  
 ECD\_O  
 ClientSampleId :  
 AR1242CCC500



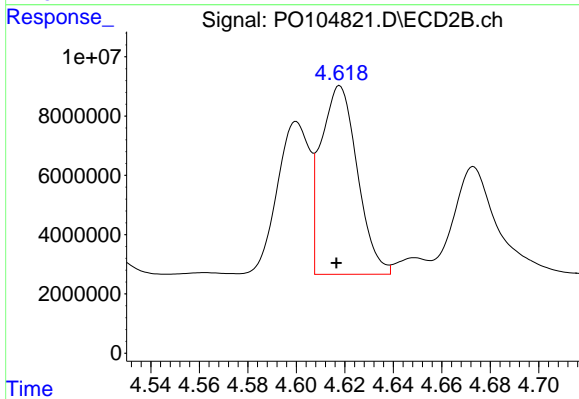
#11 AR-1232-1

R.T.: 3.908 min  
 Delta R.T.: 0.001 min  
 Response: 27779874  
 Conc: 352.77 ng/ml



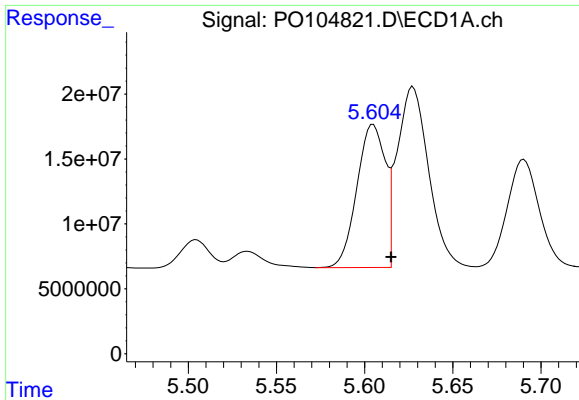
#12 AR-1232-2

R.T.: 5.336 min  
 Delta R.T.: 0.012 min  
 Response: 92044378  
 Conc: 811.07 ng/ml



#12 AR-1232-2

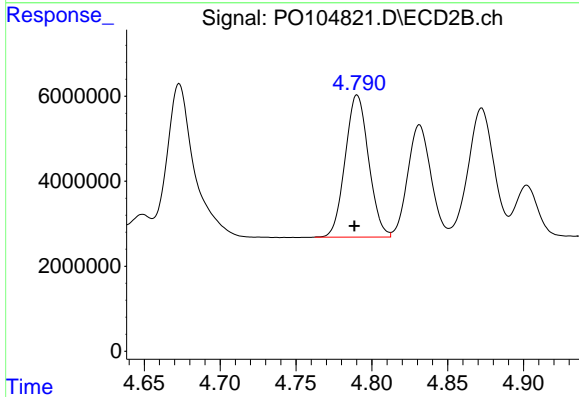
R.T.: 4.618 min  
 Delta R.T.: 0.001 min  
 Response: 66430537  
 Conc: 912.64 ng/ml



#13 AR-1232-3

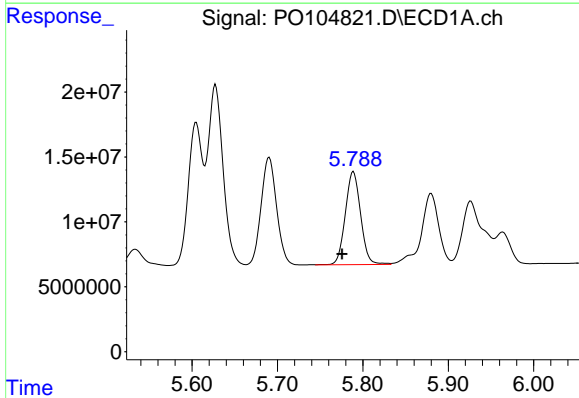
R.T.: 5.605 min  
 Delta R.T.: -0.010 min  
 Response: 123586937  
 Conc: 634.91 ng/ml

Instrument :  
 ECD\_O  
 ClientSampleId :  
 AR1242CCC500



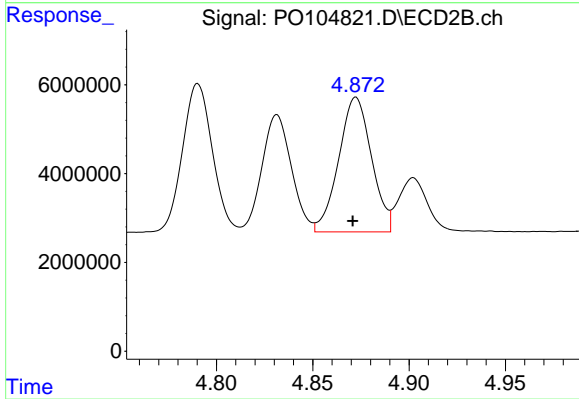
#13 AR-1232-3

R.T.: 4.790 min  
 Delta R.T.: 0.002 min  
 Response: 36008809  
 Conc: 917.70 ng/ml



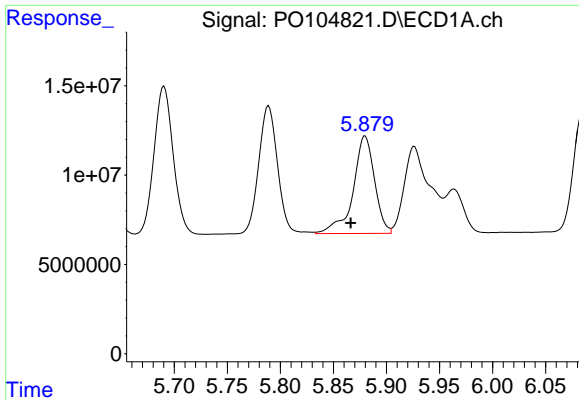
#14 AR-1232-4

R.T.: 5.789 min  
 Delta R.T.: 0.013 min  
 Response: 89406913  
 Conc: 902.28 ng/ml



#14 AR-1232-4

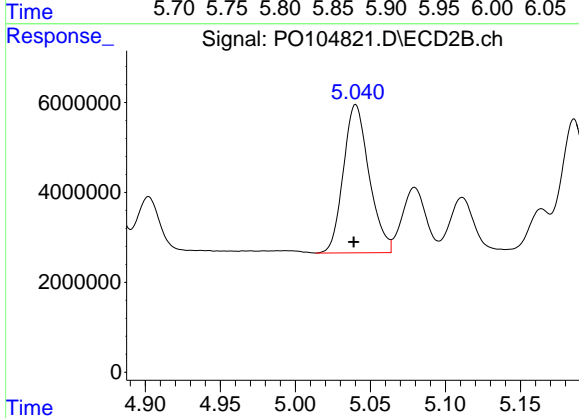
R.T.: 4.872 min  
 Delta R.T.: 0.002 min  
 Response: 35937568  
 Conc: 1009.24 ng/ml



#15 AR-1232-5

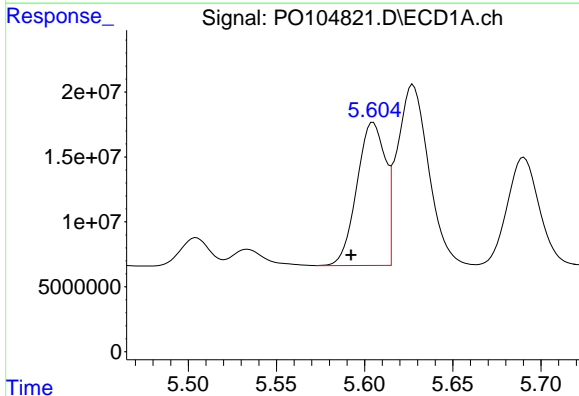
R.T.: 5.880 min  
 Delta R.T.: 0.014 min  
 Response: 77056891  
 Conc: 983.71 ng/ml

Instrument :  
 ECD\_O  
 ClientSampleId :  
 AR1242CCC500



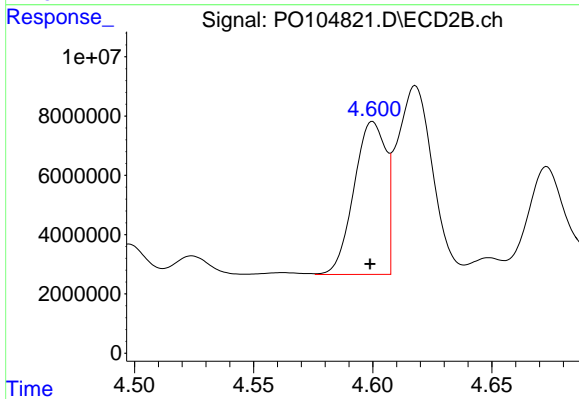
#15 AR-1232-5

R.T.: 5.040 min  
 Delta R.T.: 0.001 min  
 Response: 39377196  
 Conc: 981.72 ng/ml



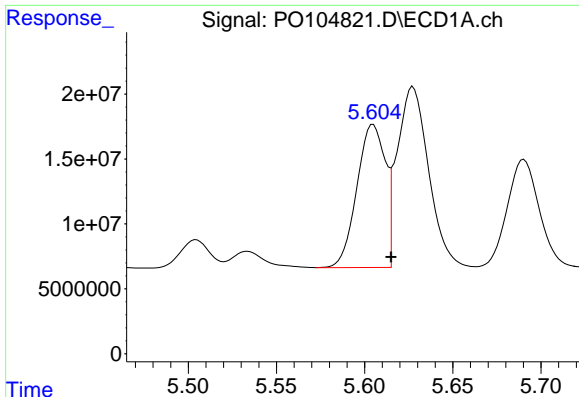
#16 AR-1242-1

R.T.: 5.605 min  
 Delta R.T.: 0.013 min  
 Response: 123586937  
 Conc: 521.42 ng/ml



#16 AR-1242-1

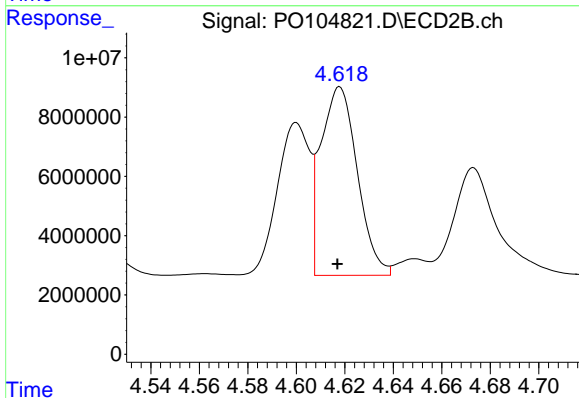
R.T.: 4.600 min  
 Delta R.T.: 0.001 min  
 Response: 47854868  
 Conc: 536.68 ng/ml



#17 AR-1242-2

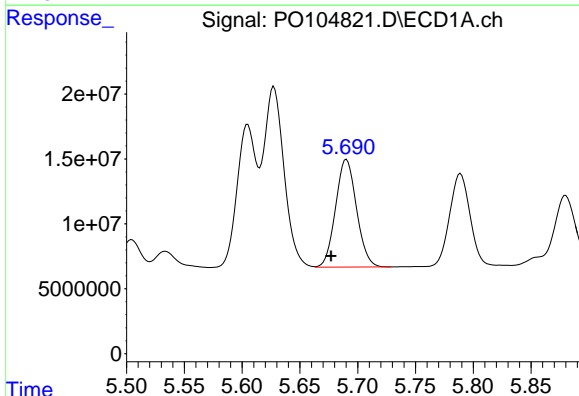
R.T.: 5.605 min  
 Delta R.T.: -0.010 min  
 Response: 123586937  
 Conc: 378.64 ng/ml

Instrument :  
 ECD\_O  
 ClientSampleId :  
 AR1242CCC500



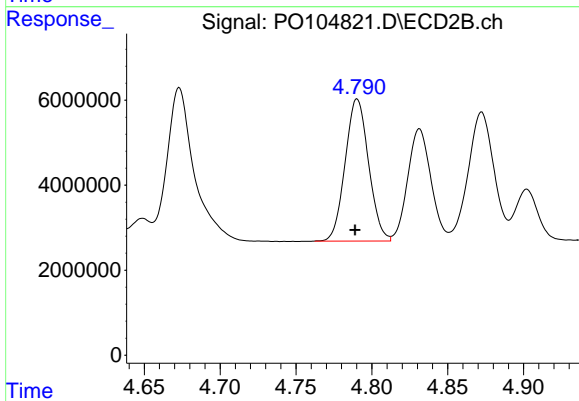
#17 AR-1242-2

R.T.: 4.618 min  
 Delta R.T.: 0.000 min  
 Response: 66430537  
 Conc: 546.92 ng/ml



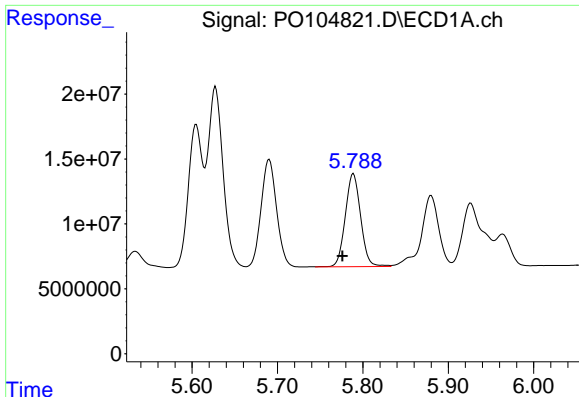
#18 AR-1242-3

R.T.: 5.690 min  
 Delta R.T.: 0.013 min  
 Response: 104561762  
 Conc: 509.28 ng/ml



#18 AR-1242-3

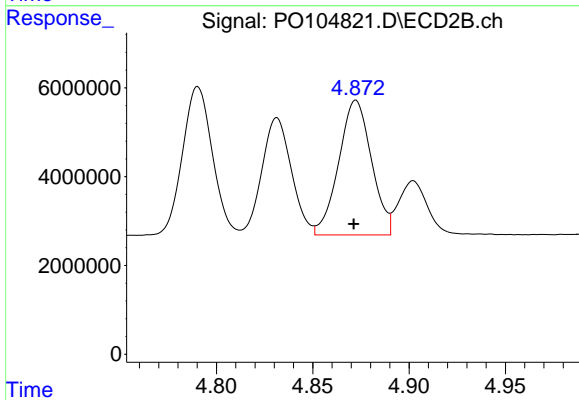
R.T.: 4.790 min  
 Delta R.T.: 0.002 min  
 Response: 36008809  
 Conc: 550.95 ng/ml



#19 AR-1242-4

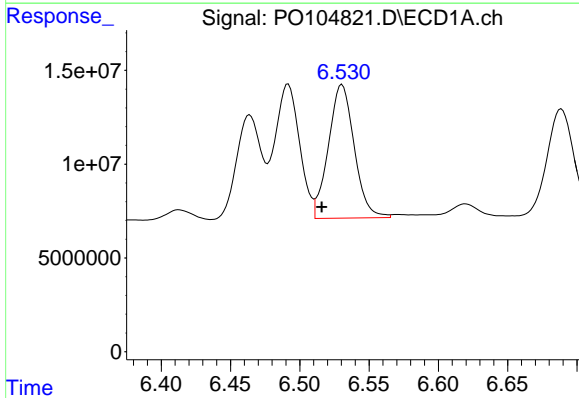
R.T.: 5.789 min  
 Delta R.T.: 0.013 min  
 Response: 89406913  
 Conc: 522.60 ng/ml

Instrument :  
 ECD\_O  
 ClientSampleId :  
 AR1242CCC500



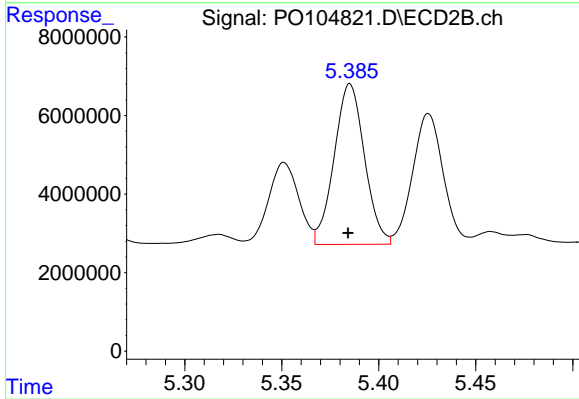
#19 AR-1242-4

R.T.: 4.872 min  
 Delta R.T.: 0.001 min  
 Response: 35937568  
 Conc: 543.61 ng/ml



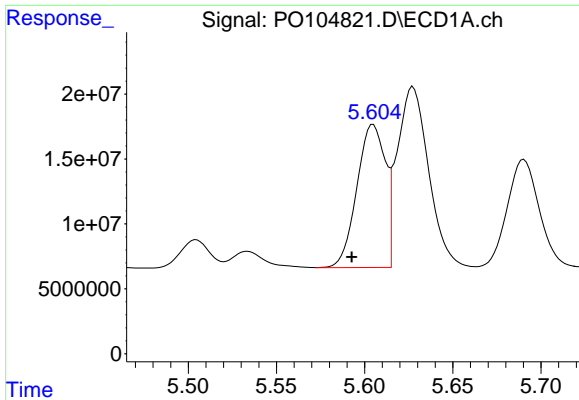
#20 AR-1242-5

R.T.: 6.531 min  
 Delta R.T.: 0.015 min  
 Response: 92267028  
 Conc: 513.94 ng/ml



#20 AR-1242-5

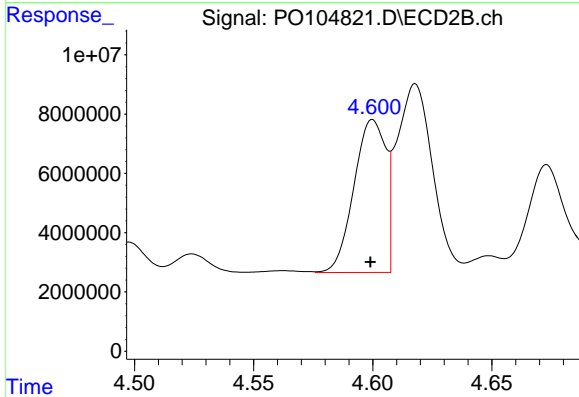
R.T.: 5.385 min  
 Delta R.T.: 0.000 min  
 Response: 44502991  
 Conc: 532.74 ng/ml



#21 AR-1248-1

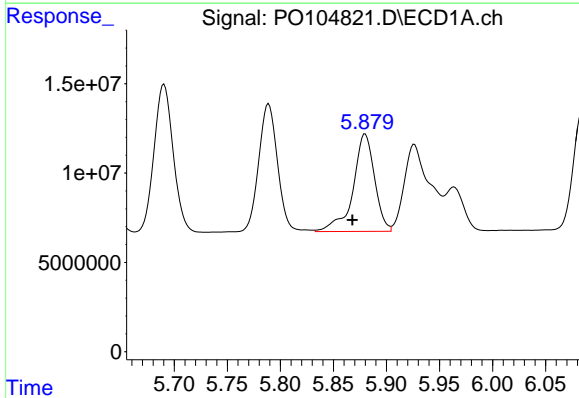
R.T.: 5.605 min  
 Delta R.T.: 0.012 min  
 Response: 123586937  
 Conc: 677.41 ng/ml

Instrument :  
 ECD\_O  
 ClientSampleId :  
 AR1242CCC500



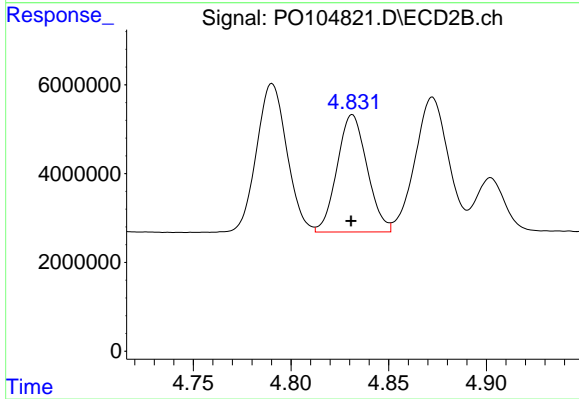
#21 AR-1248-1

R.T.: 4.600 min  
 Delta R.T.: 0.001 min  
 Response: 47854868  
 Conc: 689.77 ng/ml



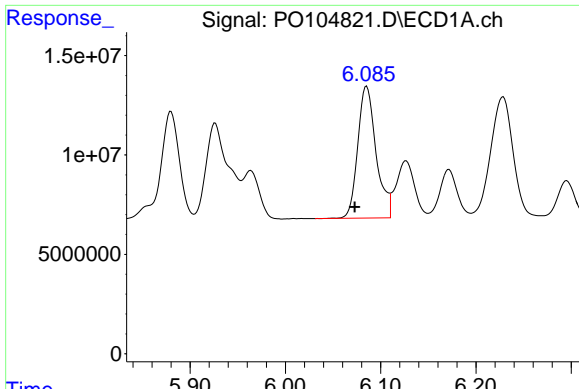
#22 AR-1248-2

R.T.: 5.880 min  
 Delta R.T.: 0.012 min  
 Response: 77056891  
 Conc: 298.36 ng/ml



#22 AR-1248-2

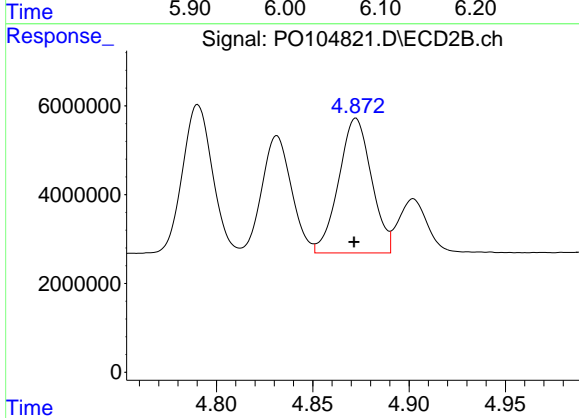
R.T.: 4.831 min  
 Delta R.T.: 0.000 min  
 Response: 28243285  
 Conc: 299.01 ng/ml



#23 AR-1248-3

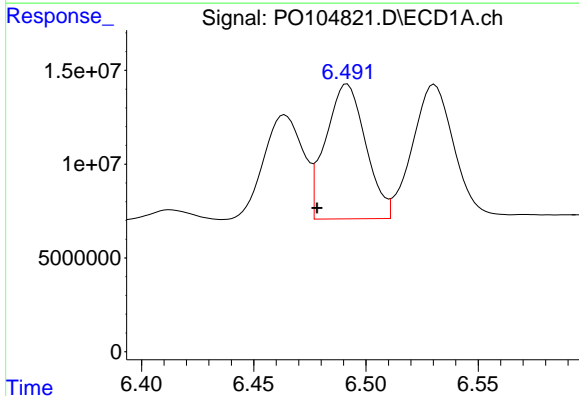
R.T.: 6.085 min  
 Delta R.T.: 0.012 min  
 Response: 88591394  
 Conc: 322.60 ng/ml

Instrument :  
 ECD\_O  
 ClientSampleId :  
 AR1242CCC500



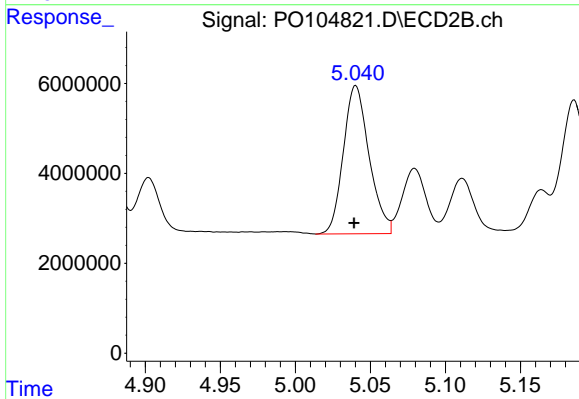
#23 AR-1248-3

R.T.: 4.872 min  
 Delta R.T.: 0.000 min  
 Response: 35937568  
 Conc: 364.40 ng/ml



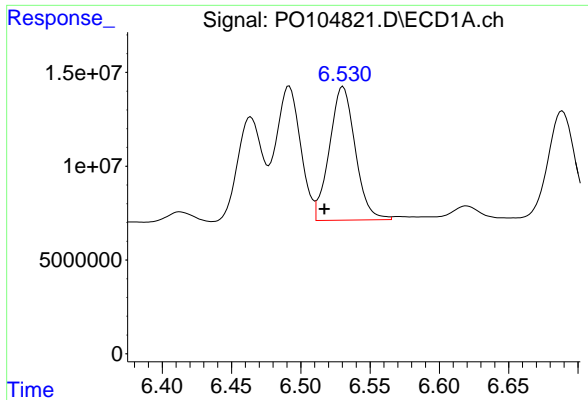
#24 AR-1248-4

R.T.: 6.492 min  
 Delta R.T.: 0.013 min  
 Response: 88908338  
 Conc: 292.03 ng/ml



#24 AR-1248-4

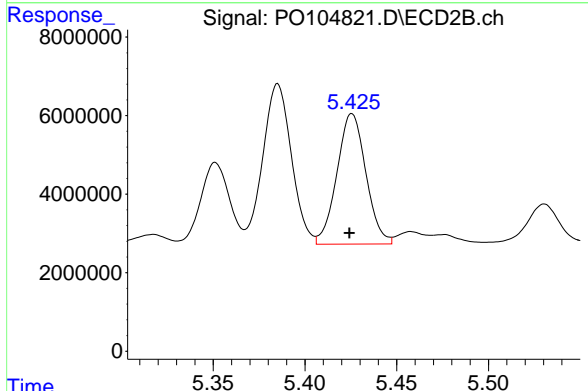
R.T.: 5.040 min  
 Delta R.T.: 0.000 min  
 Response: 39377196  
 Conc: 344.43 ng/ml



#25 AR-1248-5

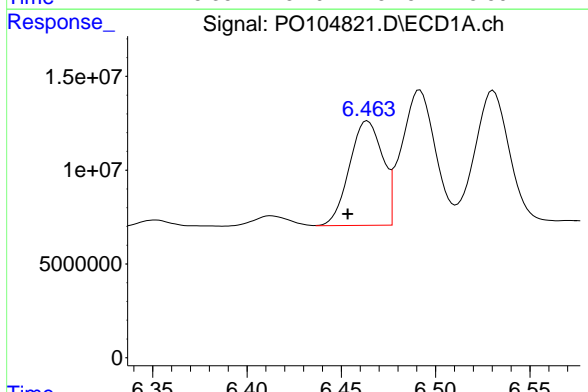
R.T.: 6.531 min  
 Delta R.T.: 0.013 min  
 Response: 92267028  
 Conc: 313.63 ng/ml

Instrument :  
 ECD\_O  
 ClientSampleId :  
 AR1242CCC500



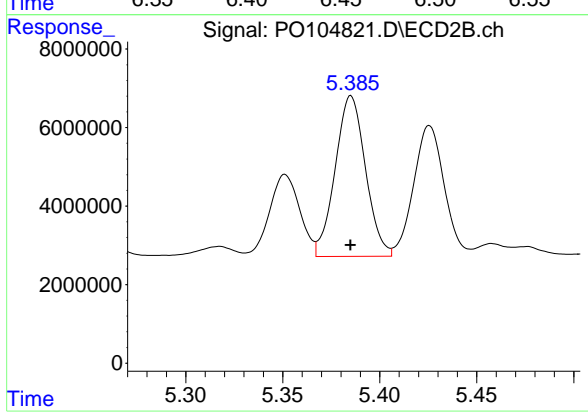
#25 AR-1248-5

R.T.: 5.426 min  
 Delta R.T.: 0.001 min  
 Response: 36538729  
 Conc: 327.23 ng/ml



#26 AR-1254-1

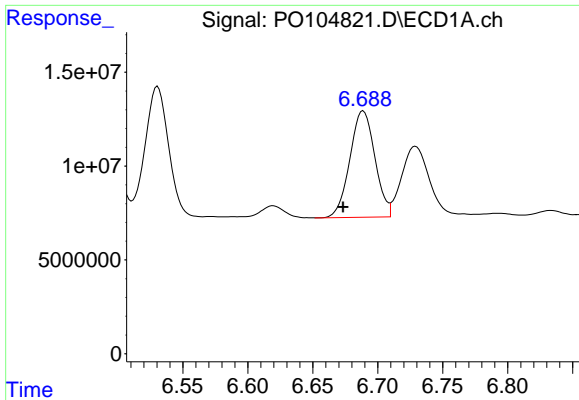
R.T.: 6.464 min  
 Delta R.T.: 0.011 min  
 Response: 68102246  
 Conc: 221.33 ng/ml



#26 AR-1254-1

R.T.: 5.385 min  
 Delta R.T.: 0.000 min  
 Response: 44502991  
 Conc: 264.01 ng/ml

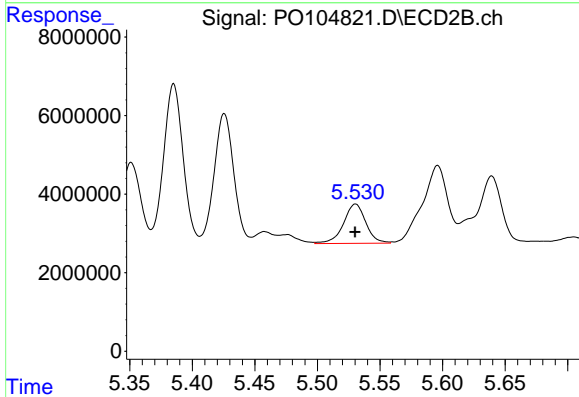




#27 AR-1254-2

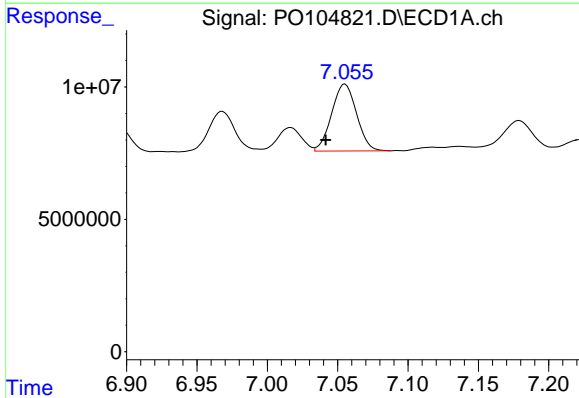
R.T.: 6.689 min  
 Delta R.T.: 0.016 min  
 Response: 76073446  
 Conc: 170.14 ng/ml

Instrument :  
 ECD\_O  
 ClientSampleId :  
 AR1242CCC500



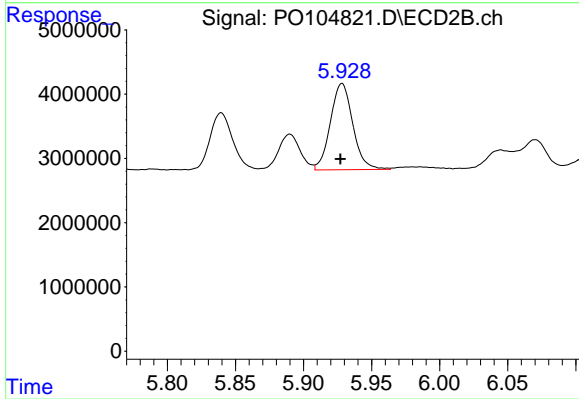
#27 AR-1254-2

R.T.: 5.530 min  
 Delta R.T.: 0.000 min  
 Response: 12412353  
 Conc: 83.46 ng/ml



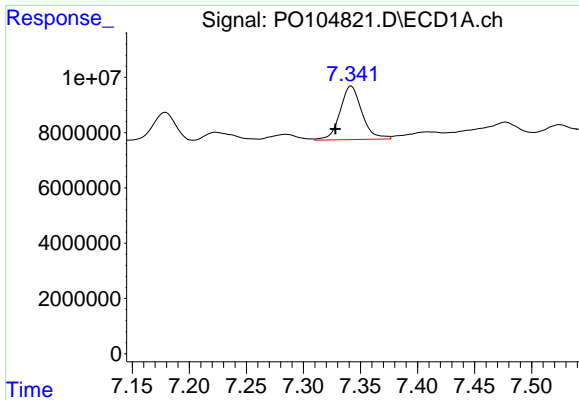
#28 AR-1254-3

R.T.: 7.055 min  
 Delta R.T.: 0.014 min  
 Response: 31176820  
 Conc: 68.54 ng/ml



#28 AR-1254-3

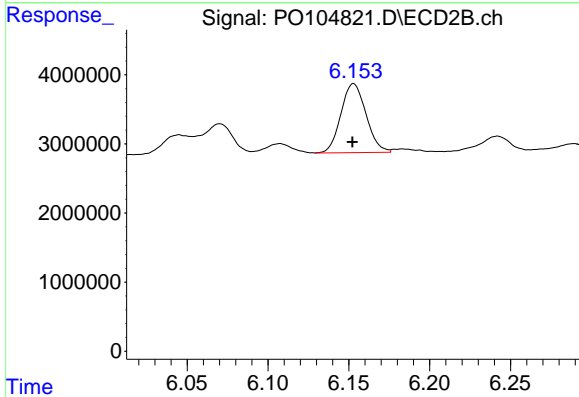
R.T.: 5.928 min  
 Delta R.T.: 0.001 min  
 Response: 15451753  
 Conc: 67.09 ng/ml



#29 AR-1254-4

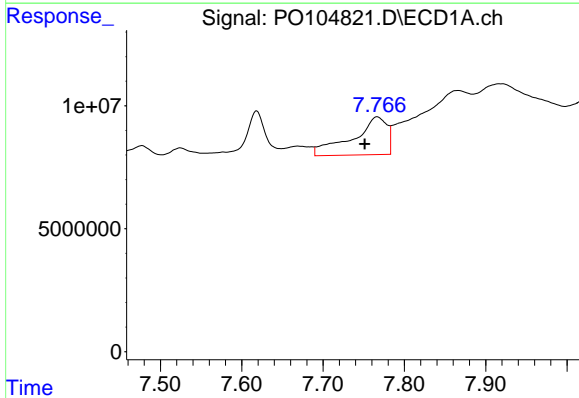
R.T.: 7.342 min  
 Delta R.T.: 0.014 min  
 Response: 25850301  
 Conc: 76.66 ng/ml

Instrument :  
 ECD\_O  
 ClientSampleId :  
 AR1242CCC500



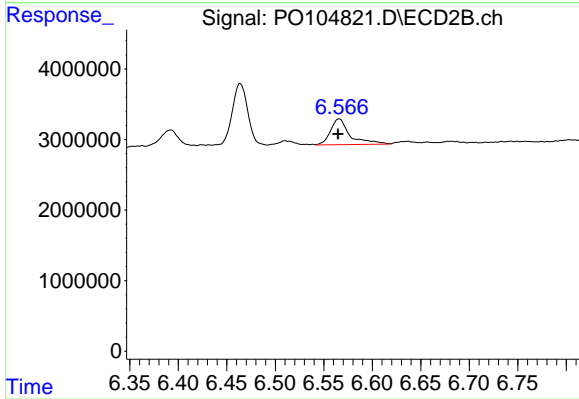
#29 AR-1254-4

R.T.: 6.153 min  
 Delta R.T.: 0.000 min  
 Response: 10785747  
 Conc: 75.60 ng/ml



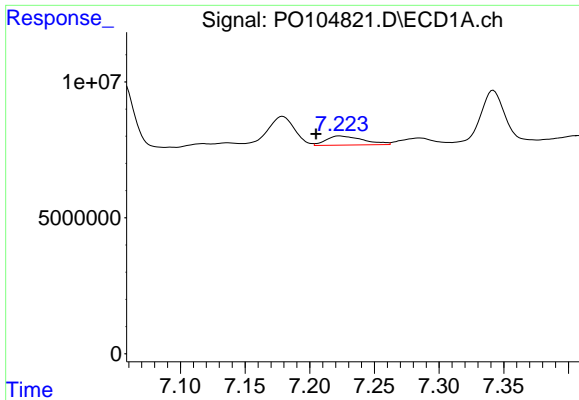
#30 AR-1254-5

R.T.: 7.767 min  
 Delta R.T.: 0.015 min  
 Response: 45226115  
 Conc: 121.10 ng/ml



#30 AR-1254-5

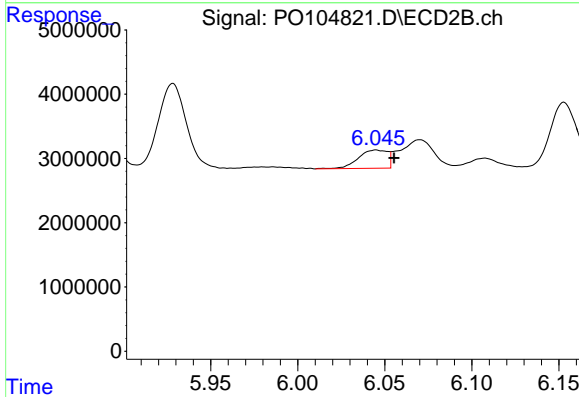
R.T.: 6.566 min  
 Delta R.T.: 0.001 min  
 Response: 5132949  
 Conc: 25.58 ng/ml



#31 AR-1260-1

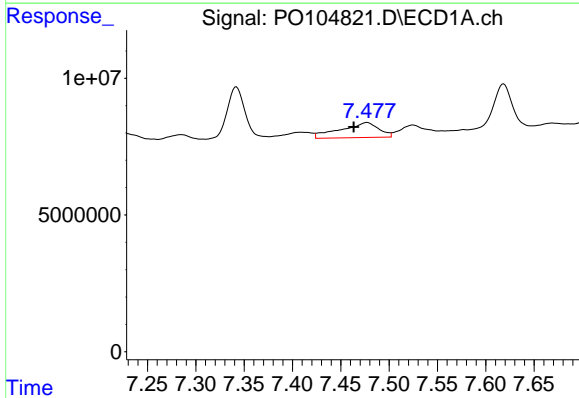
R.T.: 7.223 min  
 Delta R.T.: 0.018 min  
 Response: 6694461  
 Conc: 18.54 ng/ml

Instrument :  
 ECD\_O  
 ClientSampleId :  
 AR1242CCC500



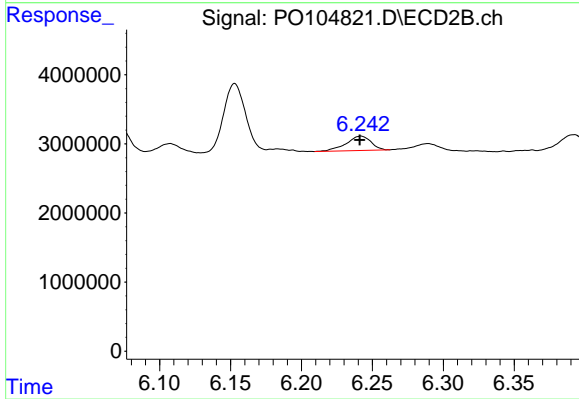
#31 AR-1260-1

R.T.: 6.045 min  
 Delta R.T.: -0.010 min  
 Response: 3305533  
 Conc: 20.64 ng/ml



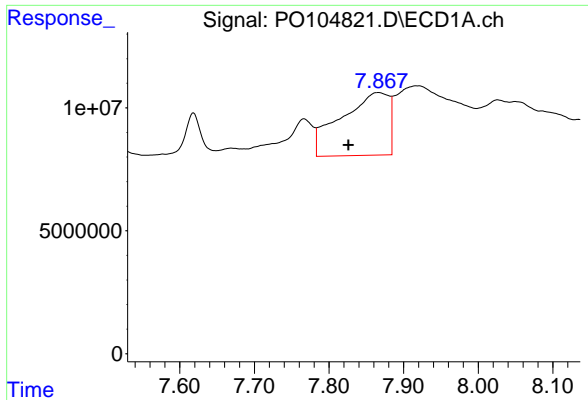
#32 AR-1260-2

R.T.: 7.477 min  
 Delta R.T.: 0.014 min  
 Response: 15160485  
 Conc: 35.93 ng/ml



#32 AR-1260-2

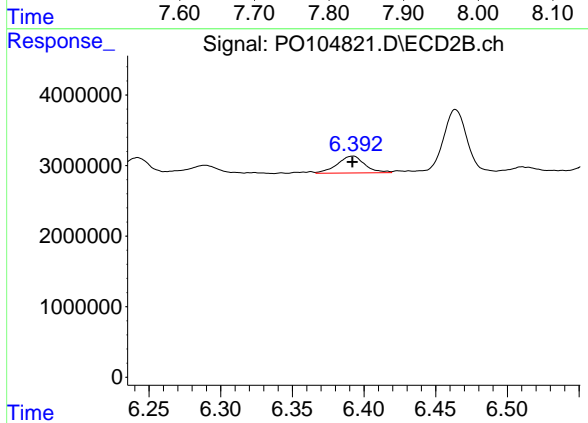
R.T.: 6.242 min  
 Delta R.T.: 0.000 min  
 Response: 2535696  
 Conc: 13.20 ng/ml



#33 AR-1260-3

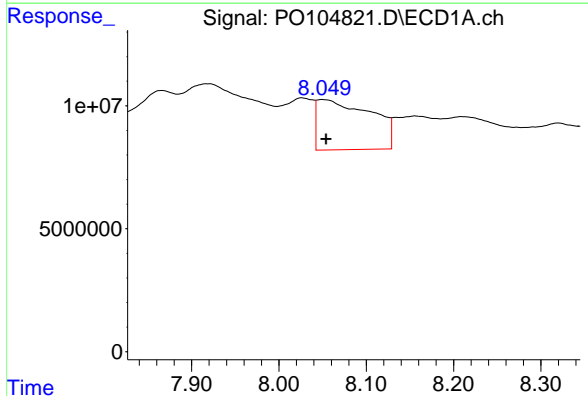
R.T.: 7.867 min  
 Delta R.T.: 0.041 min  
 Response: 114046131  
 Conc: 386.02 ng/ml

Instrument :  
 ECD\_O  
 ClientSampleId :  
 AR1242CCC500



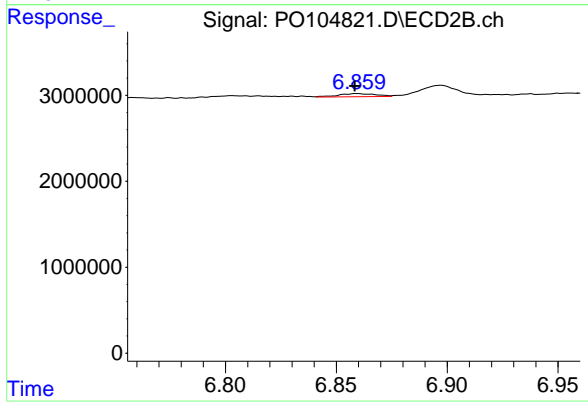
#33 AR-1260-3

R.T.: 6.392 min  
 Delta R.T.: 0.000 min  
 Response: 3172825  
 Conc: 17.84 ng/ml



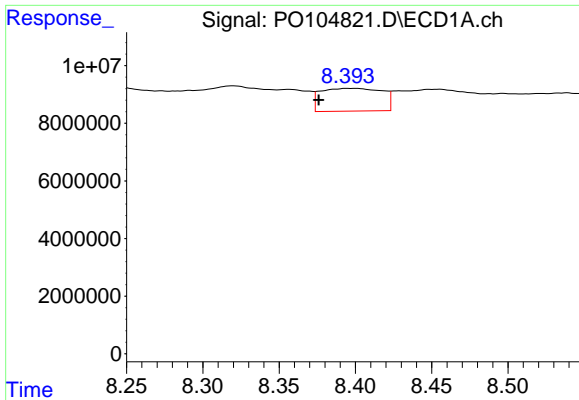
#34 AR-1260-4

R.T.: 8.049 min  
 Delta R.T.: -0.005 min  
 Response: 87745222  
 Conc: 247.66 ng/ml



#34 AR-1260-4

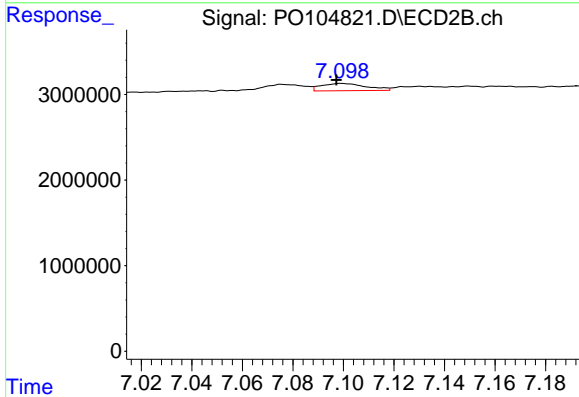
R.T.: 6.859 min  
 Delta R.T.: 0.000 min  
 Response: 439880  
 Conc: 3.28 ng/ml



#35 AR-1260-5

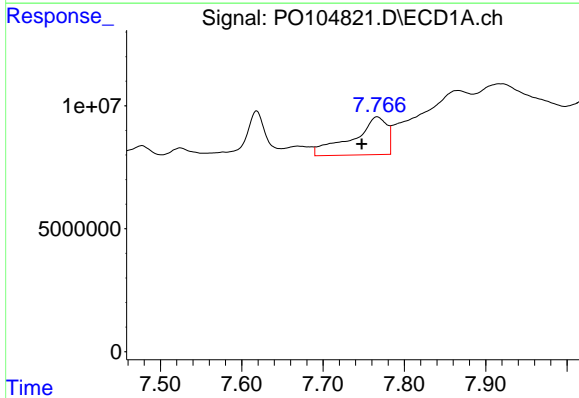
R.T.: 8.394 min  
 Delta R.T.: 0.019 min  
 Response: 22078160  
 Conc: 33.87 ng/ml

Instrument :  
 ECD\_O  
 ClientSampleId :  
 AR1242CCC500



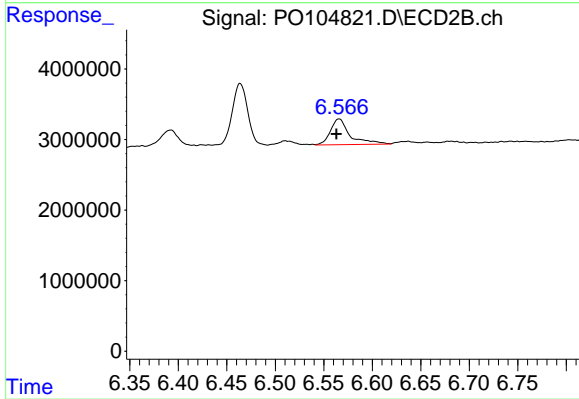
#35 AR-1260-5

R.T.: 7.099 min  
 Delta R.T.: 0.002 min  
 Response: 1042380  
 Conc: 3.41 ng/ml



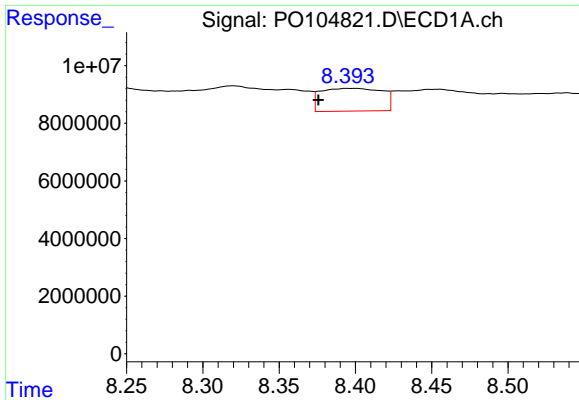
#36 AR-1262-1

R.T.: 7.767 min  
 Delta R.T.: 0.019 min  
 Response: 45226115  
 Conc: 146.51 ng/ml



#36 AR-1262-1

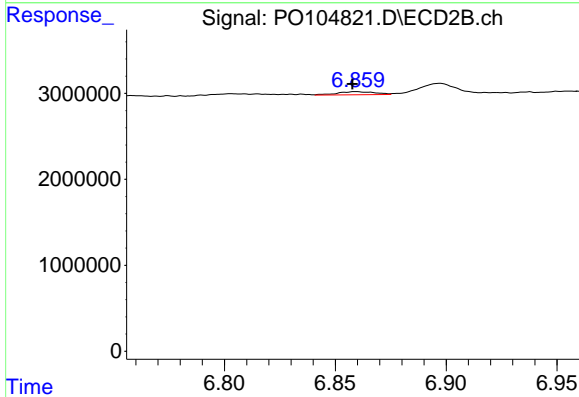
R.T.: 6.566 min  
 Delta R.T.: 0.003 min  
 Response: 5132949  
 Conc: 45.34 ng/ml



#37 AR-1262-2

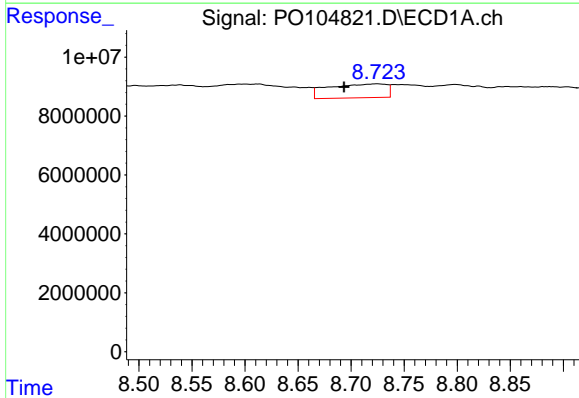
R.T.: 8.394 min  
 Delta R.T.: 0.019 min  
 Response: 22078160  
 Conc: 27.90 ng/ml

Instrument :  
 ECD\_O  
 ClientSampleId :  
 AR1242CCC500



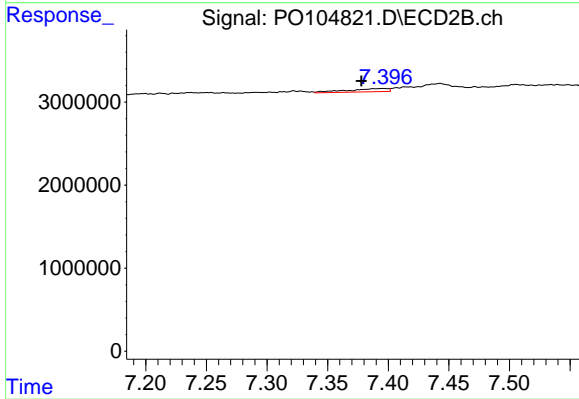
#37 AR-1262-2

R.T.: 6.859 min  
 Delta R.T.: 0.002 min  
 Response: 439880  
 Conc: 2.38 ng/ml



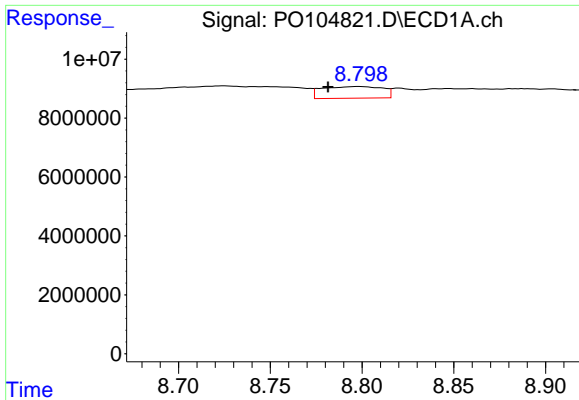
#38 AR-1262-3

R.T.: 8.724 min  
 Delta R.T.: 0.031 min  
 Response: 17904952  
 Conc: 33.24 ng/ml



#38 AR-1262-3

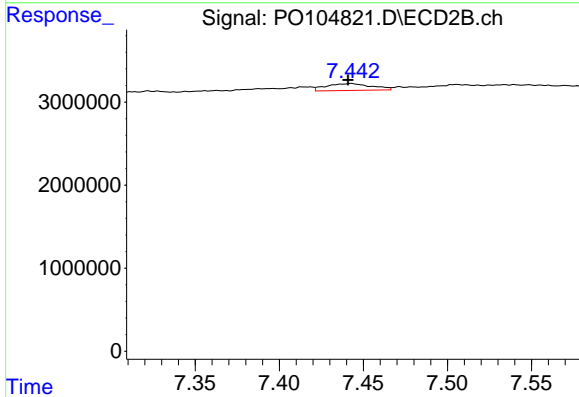
R.T.: 7.397 min  
 Delta R.T.: 0.019 min  
 Response: 882168  
 Conc: 6.32 ng/ml



#39 AR-1262-4

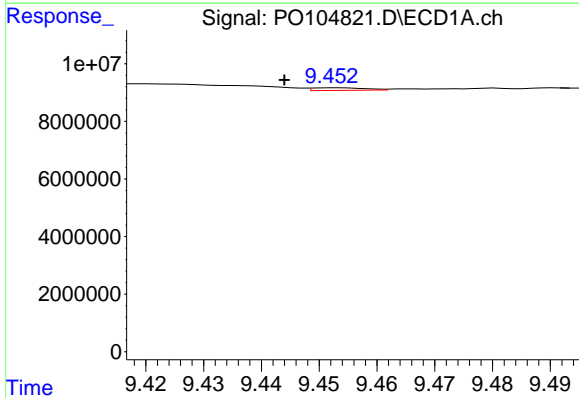
R.T.: 8.798 min  
 Delta R.T.: 0.017 min  
 Response: 9027898  
 Conc: 22.15 ng/ml

Instrument :  
 ECD\_O  
 ClientSampleId :  
 AR1242CCC500



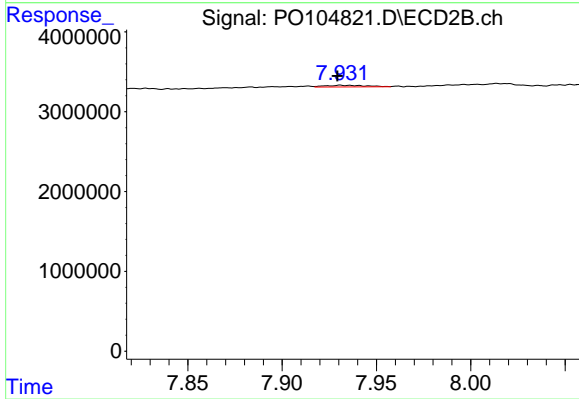
#39 AR-1262-4

R.T.: 7.443 min  
 Delta R.T.: 0.002 min  
 Response: 1545493  
 Conc: 6.00 ng/ml



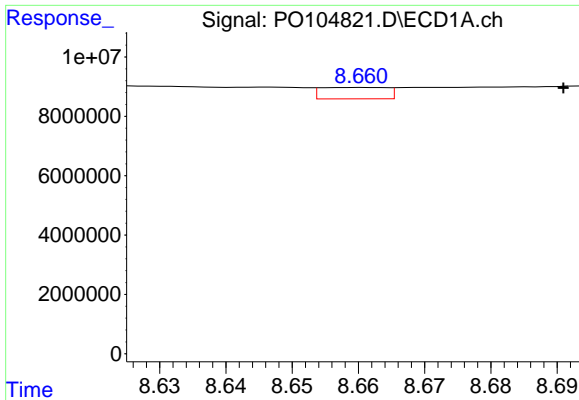
#40 AR-1262-5

R.T.: 9.453 min  
 Delta R.T.: 0.009 min  
 Response: 584416  
 Conc: 2.09 ng/ml



#40 AR-1262-5

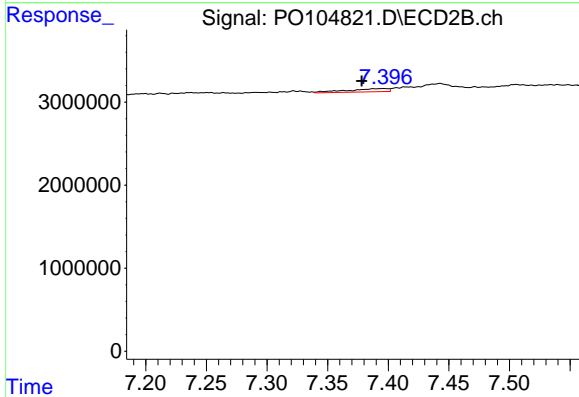
R.T.: 7.931 min  
 Delta R.T.: 0.002 min  
 Response: 291661  
 Conc: 2.56 ng/ml



#41 AR-1268-1

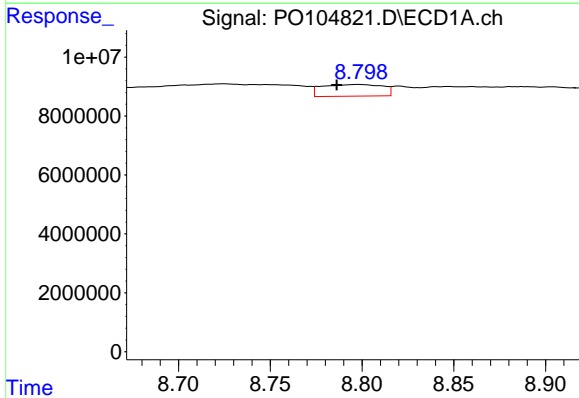
R.T.: 8.661 min  
 Delta R.T.: -0.030 min  
 Response: 2663488  
 Conc: 3.06 ng/ml

Instrument :  
 ECD\_O  
 ClientSampleId :  
 AR1242CCC500



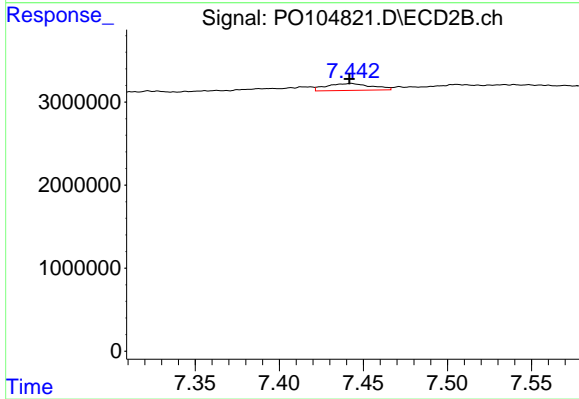
#41 AR-1268-1

R.T.: 7.397 min  
 Delta R.T.: 0.018 min  
 Response: 882168  
 Conc: 2.31 ng/ml



#42 AR-1268-2

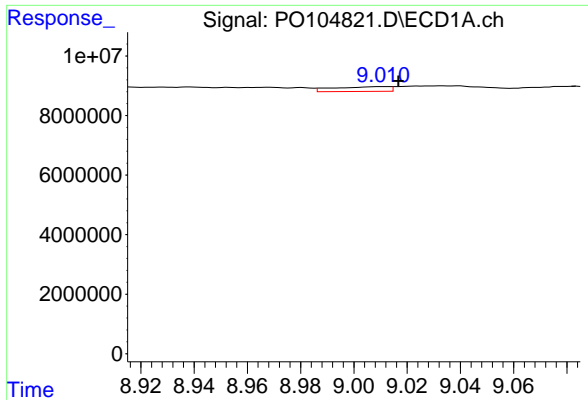
R.T.: 8.798 min  
 Delta R.T.: 0.012 min  
 Response: 9027898  
 Conc: 11.29 ng/ml



#42 AR-1268-2

R.T.: 7.443 min  
 Delta R.T.: 0.000 min  
 Response: 1545493  
 Conc: 4.54 ng/ml

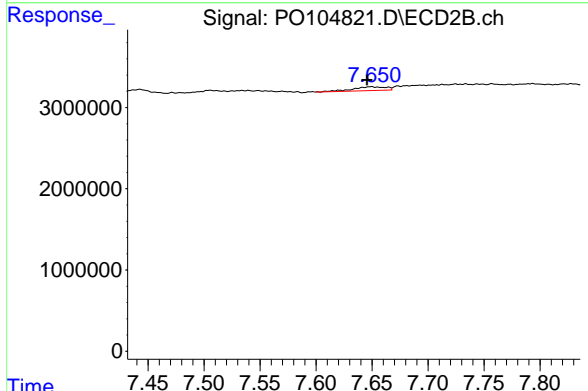




#43 AR-1268-3

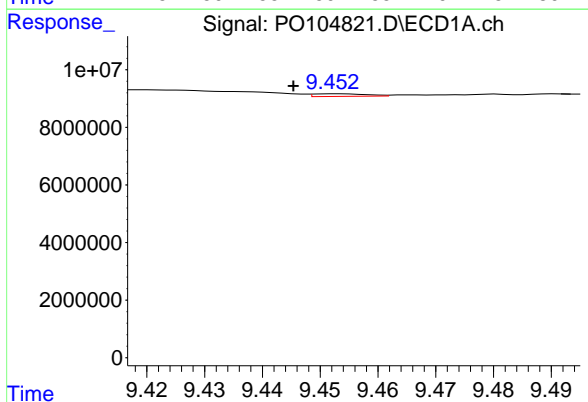
R.T.: 9.011 min  
 Delta R.T.: -0.006 min  
 Response: 2334854  
 Conc: 3.51 ng/ml

Instrument : ECD\_O  
 ClientSampleId : AR1242CCC500



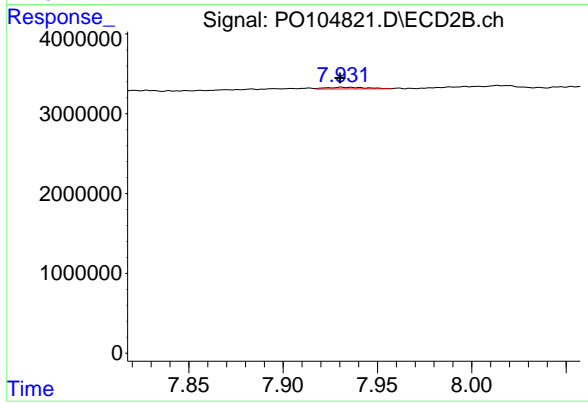
#43 AR-1268-3

R.T.: 7.649 min  
 Delta R.T.: 0.003 min  
 Response: 955400  
 Conc: 3.47 ng/ml



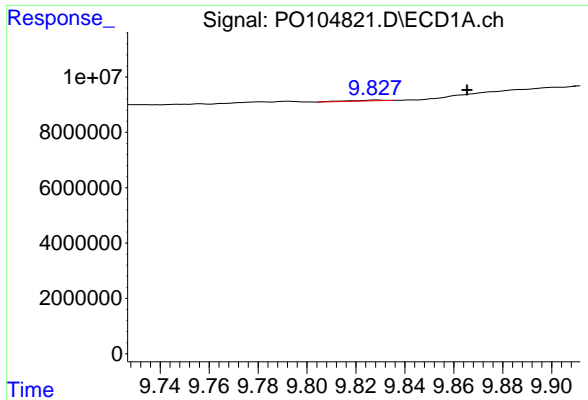
#44 AR-1268-4

R.T.: 9.453 min  
 Delta R.T.: 0.008 min  
 Response: 584416  
 Conc: 2.05 ng/ml



#44 AR-1268-4

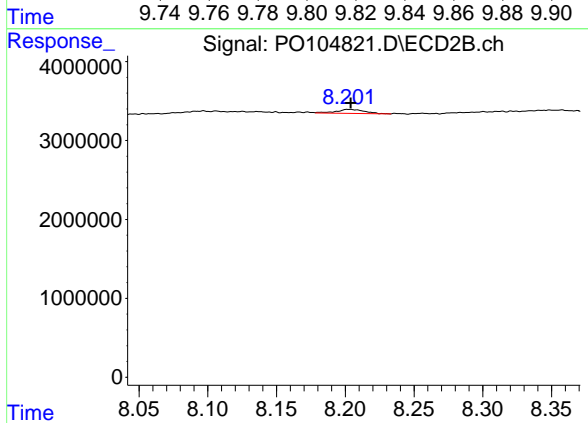
R.T.: 7.931 min  
 Delta R.T.: 0.000 min  
 Response: 291661  
 Conc: 2.47 ng/ml



#45 AR-1268-5

R.T.: 9.828 min  
 Delta R.T.: -0.037 min  
 Response: 274472  
 Conc: 0.13 ng/ml

Instrument :  
 ECD\_O  
 ClientSampleId :  
 AR1242CCC500



#45 AR-1268-5

R.T.: 8.202 min  
 Delta R.T.: -0.002 min  
 Response: 735934  
 Conc: 0.94 ng/ml