

Data Path : Z:\pestpcbsrv\HPCHEM1\ECD\_O\Data\PO071918\  
 Data File : PO046878.D  
 Signal(s) : Signal #1: ECD1A.CH Signal #2: ECD2B.CH  
 Acq On : 18 Jul 2018 19:25  
 Operator : SM/SJ  
 Sample : AR1660ICC050  
 Misc :  
 ALS Vial : 7 Sample Multiplier: 1

Instrument :  
 ECD\_O  
 ClientSampleId :  
 AR1660ICC050

Integration File signal 1: autoint1.e  
 Integration File signal 2: autoint2.e  
 Quant Time: Jul 19 00:08:33 2018  
 Quant Method : Z:\pestpcbsrv\HPCHEM1\ECD\_O\methods\PO071918.M  
 Quant Title : GC EXTRACTABLES  
 QLast Update : Thu Jul 19 00:05:44 2018  
 Response via : Initial Calibration  
 Integrator: ChemStation 6890 Scale Mode: Small noise peaks clipped

Volume Inj. : 2 µl  
 Signal #1 Phase : ZB-MR1 Signal #2 Phase: ZB-MR2  
 Signal #1 Info : 30Mx0.32mmx 0.50µ Signal #2 Info : 30M x 0.32mm x 0.25µm

Compound	RT#1	RT#2	Resp#1	Resp#2	ng/ml	ng/ml
-----						
System Monitoring Compounds						
1) SA Tetrachlo...	4.193	3.517	1469480	1524152	5.821	6.532
2) SA Decachlor...	9.716	8.441	1191565	1238830	6.038	6.021
Target Compounds						
3) L1 AR-1016-1	5.076	4.367	338817	413954	57.219	70.510
4) L1 AR-1016-2	5.423	4.776	465791	467338	62.693	84.123 #
5) L1 AR-1016-3	5.519	4.818	419068	326874	67.309	55.613
6) L1 AR-1016-4	5.812	4.859	359696	408386	59.591	62.163
7) L1 AR-1016-5	5.950	5.027	379823	401399	56.335	66.611
9) L2 AR-1221-2	4.556	3.886	249022	258103	105.279	119.715
10) L2 AR-1221-3	4.556	3.886	249022	258103	32.945	37.674
11) L3 AR-1232-1	4.916	4.199	187554	203038	76.734	87.470
12) L3 AR-1232-2	5.362	4.603	743076	770171	209.902	223.575
13) L3 AR-1232-3	5.362	4.603	743076	770171	146.398	161.438
14) L3 AR-1232-4	5.423	4.658	465791	567055	142.942	161.354
15) L3 AR-1232-5	5.519	4.818	419068	326874	157.825	117.350 #
16) L4 AR-1242-1	5.362	4.603	743076	770171	73.079	80.396
17) L4 AR-1242-2	5.423	4.818	465791	326874	71.951	58.893
18) L4 AR-1242-3	5.519	4.889	419068	192212	76.920	37.016 #
19) L4 AR-1242-4	5.812	5.067	359696	158569	67.331	27.942 #
20) L4 AR-1242-5	5.950	5.174	379823	491502	62.966	94.880 #
21) L5 AR-1248-1	5.812	5.067	359696	158569	45.337	18.752 #
22) L5 AR-1248-2	5.950	5.174	379823	491502	53.640	77.004 #
23) L5 AR-1248-3	6.184	5.375	177310	448754	19.352	36.468 #
24) L5 AR-1248-4	0.000	5.375	0	448754	N.D.	51.552 #
25) L5 AR-1248-5	6.401	5.935	312887	595187	34.380	101.662 #
26) L6 AR-1254-1	6.401	5.375	312887	448754	22.439	33.562 #
27) L6 AR-1254-2	0.000	5.521	0	309137	N.D.	26.744 #
28) L6 AR-1254-3	6.822	5.935	412202	595187	26.960	30.242
29) L6 AR-1254-4	0.000	6.176	0	171266	N.D.	13.583 #
30) L6 AR-1254-5	7.308	6.508	303123	299070	34.157	32.973
31) L7 AR-1260-1	6.926	6.048	661813	866122	57.057	63.224
32) L7 AR-1260-2	7.182	6.235	804720	1172845	58.657	68.843
33) L7 AR-1260-3	7.459	6.559	813160	1232139	49.723	65.159 #
34) L7 AR-1260-4	8.064	7.094	1287085	1977550	60.007	66.237
35) L7 AR-1260-5	8.362	7.439	761628	1331589	55.478	64.647
36) L8 AR-1262-1	6.926	6.235	661813	1172845	69.475	89.548 #
37) L8 AR-1262-2	7.222	6.387	217386	1071088	19.518	82.684 #
38) L8 AR-1262-3	7.539	6.651	524334	476489	36.618	27.210 #
39) L8 AR-1262-4	7.761	6.853	642692	775322	47.801	50.717

Data Path : Z:\pestpcbsrv\HPCHEM1\ECD\_O\Data\PO071918\  
 Data File : PO046878.D  
 Signal(s) : Signal #1: ECD1A.CH Signal #2: ECD2B.CH  
 Acq On : 18 Jul 2018 19:25  
 Operator : SM/SJ  
 Sample : AR1660ICC050  
 Misc :  
 ALS Vial : 7 Sample Multiplier: 1

Instrument :  
 ECD\_O  
 ClientSampleId :  
 AR1660ICC050

Integration File signal 1: autoint1.e  
 Integration File signal 2: autoint2.e  
 Quant Time: Jul 19 00:08:33 2018  
 Quant Method : Z:\pestpcbsrv\HPCHEM1\ECD\_O\methods\PO071918.M  
 Quant Title : GC EXTRACTABLES  
 QLast Update : Thu Jul 19 00:05:44 2018  
 Response via : Initial Calibration  
 Integrator: ChemStation 6890 Scale Mode: Small noise peaks clipped

Volume Inj. : 2 µl  
 Signal #1 Phase : ZB-MR1 Signal #2 Phase: ZB-MR2  
 Signal #1 Info : 30Mx0.32mmx 0.50µ Signal #2 Info : 30M x 0.32mm x 0.25µm

	Compound	RT#1	RT#2	Resp#1	Resp#2	ng/ml	ng/ml
40)	L8 AR-1262-5	8.064	7.094	1287085	1977550	53.176	64.064
41)	L9 AR-1268-1	8.362	7.376	761628	445127	31.245	15.906 #
42)	L9 AR-1268-2	8.435	7.439	465638	1331589	20.552	48.336 #
44)	L9 AR-1268-4	9.032	7.930	313852	417963	37.006	43.915

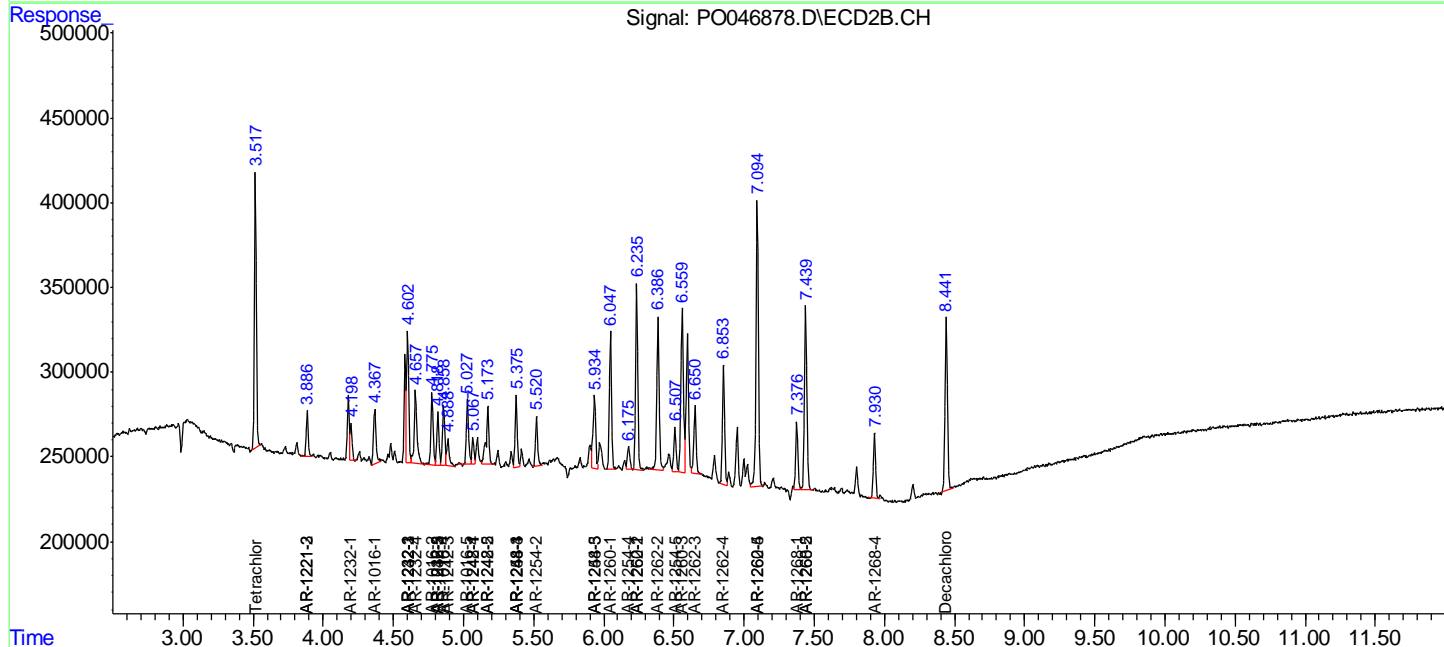
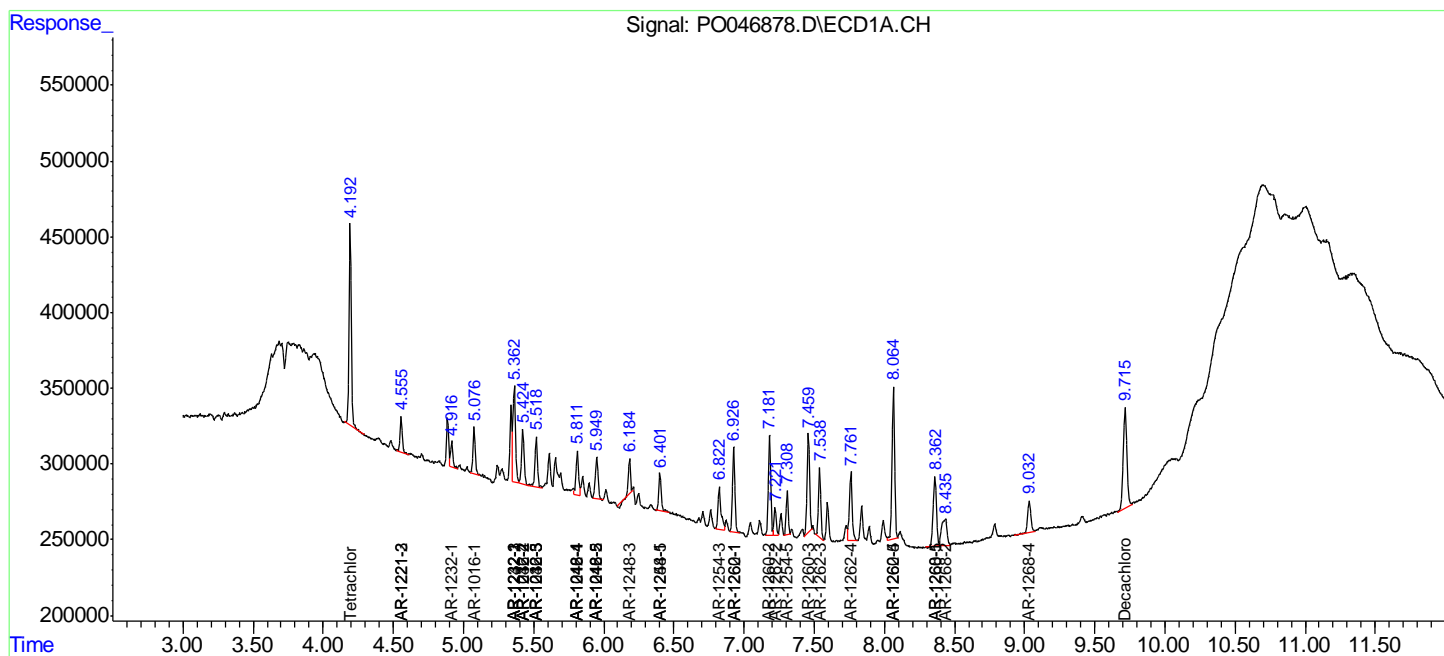
(f)=RT Delta > 1/2 Window (#)=Amounts differ by > 25% (m)=manual int.

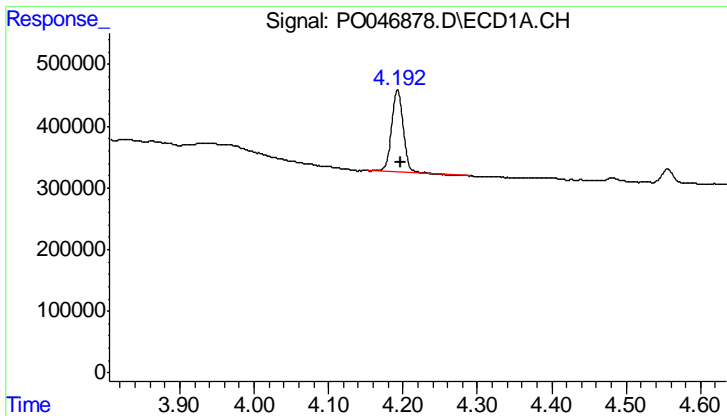
Data Path : Z:\pestpcbsrv\HPCHEM1\ECD\_O\Data\PO071918\  
 Data File : PO046878.D  
 Signal(s) : Signal #1: ECD1A.CH Signal #2: ECD2B.CH  
 Acq On : 18 Jul 2018 19:25  
 Operator : SM/SJ  
 Sample : AR1660ICC050  
 Misc :  
 ALS Vial : 7 Sample Multiplier: 1

Instrument :  
 ECD\_O  
 Client Sampled :  
 AR1660ICC050

Integration File signal 1: autoint1.e  
 Integration File signal 2: autoint2.e  
 Quant Time: Jul 19 00:08:33 2018  
 Quant Method : Z:\pestpcbsrv\HPCHEM1\ECD\_O\methods\PO071918.M  
 Quant Title : GC EXTRACTABLES  
 QLast Update : Thu Jul 19 00:05:44 2018  
 Response via : Initial Calibration  
 Integrator: ChemStation 6890 Scale Mode: Small noise peaks clipped

Volume Inj. : 2 µl  
 Signal #1 Phase : ZB-MR1 Signal #2 Phase: ZB-MR2  
 Signal #1 Info : 30Mx0.32mmx 0.50µ Signal #2 Info : 30M x 0.32mm x 0.25µm

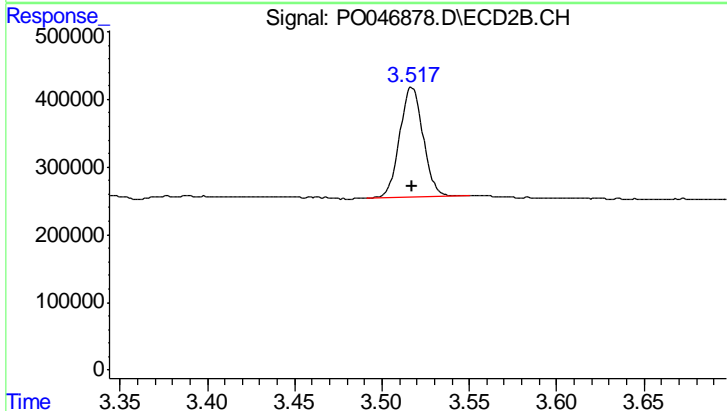




#1 Tetrachloro-m-xylene

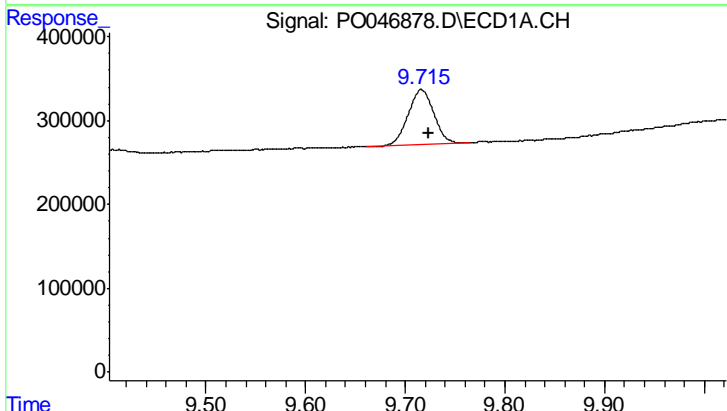
R.T.: 4.193 min  
 Delta R.T.: -0.004 min  
 Response: 1469480  
 Conc: 5.82 ng/ml

Instrument :  
 ECD\_O  
 ClientSampleId :  
 AR1660ICC050



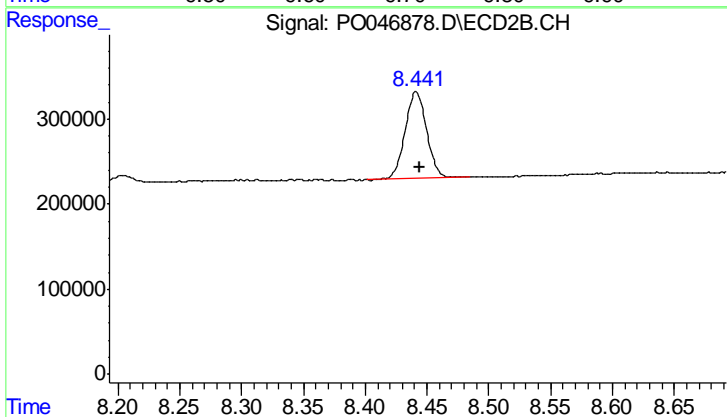
#1 Tetrachloro-m-xylene

R.T.: 3.517 min  
 Delta R.T.: 0.000 min  
 Response: 1524152  
 Conc: 6.53 ng/ml



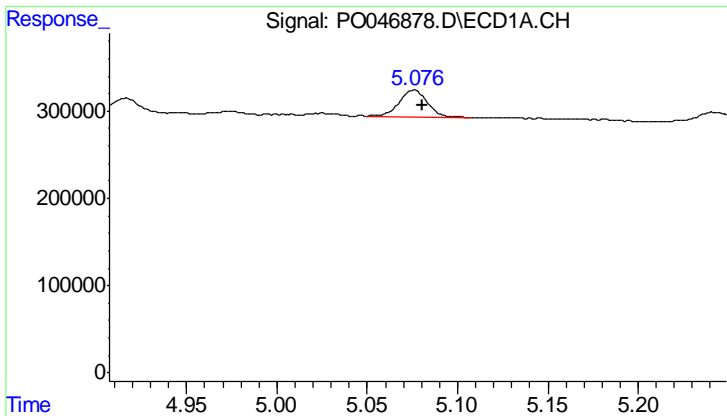
#2 Decachlorobiphenyl

R.T.: 9.716 min  
 Delta R.T.: -0.007 min  
 Response: 1191565  
 Conc: 6.04 ng/ml



#2 Decachlorobiphenyl

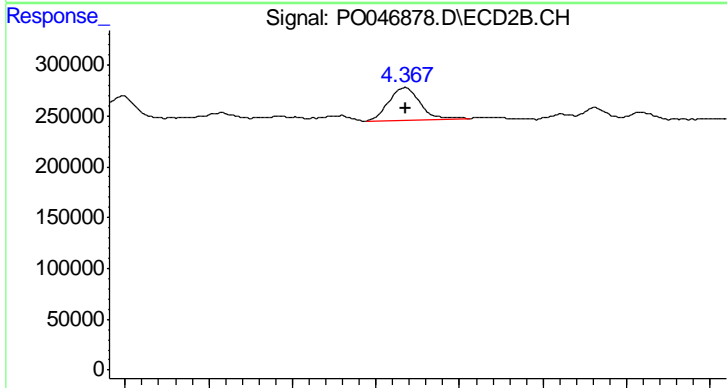
R.T.: 8.441 min  
 Delta R.T.: -0.003 min  
 Response: 1238830  
 Conc: 6.02 ng/ml



#3 AR-1016-1

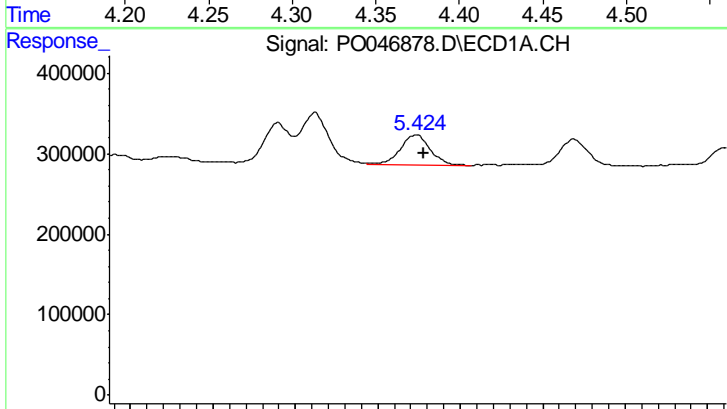
R.T.: 5.076 min  
 Delta R.T.: -0.005 min  
 Response: 338817  
 Conc: 57.22 ng/ml

Instrument :  
 ECD\_O  
 ClientSampleId :  
 AR1660ICC050



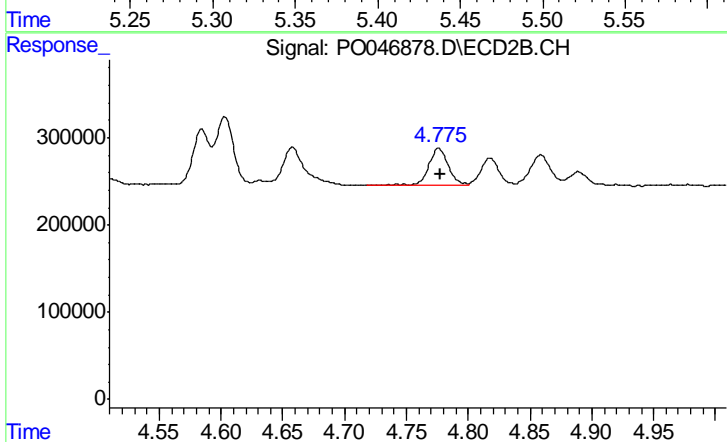
#3 AR-1016-1

R.T.: 4.367 min  
 Delta R.T.: 0.000 min  
 Response: 413954  
 Conc: 70.51 ng/ml



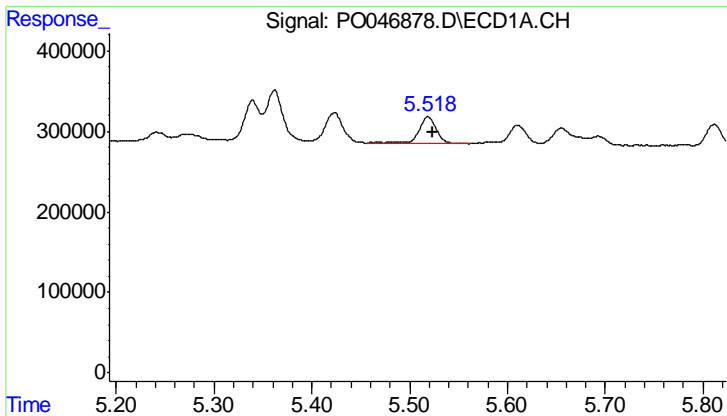
#4 AR-1016-2

R.T.: 5.423 min  
 Delta R.T.: -0.004 min  
 Response: 465791  
 Conc: 62.69 ng/ml



#4 AR-1016-2

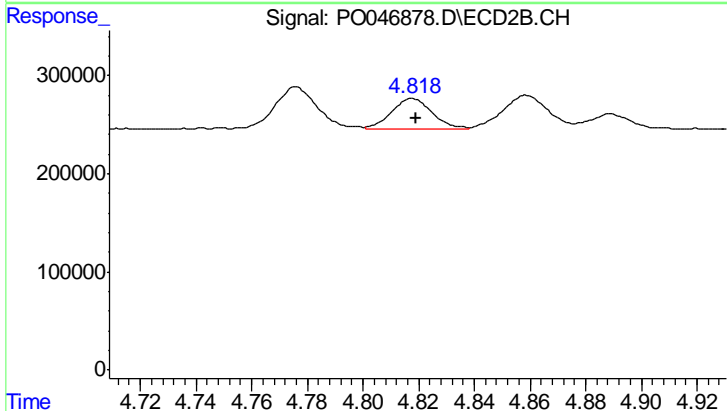
R.T.: 4.776 min  
 Delta R.T.: -0.002 min  
 Response: 467338  
 Conc: 84.12 ng/ml



#5 AR-1016-3

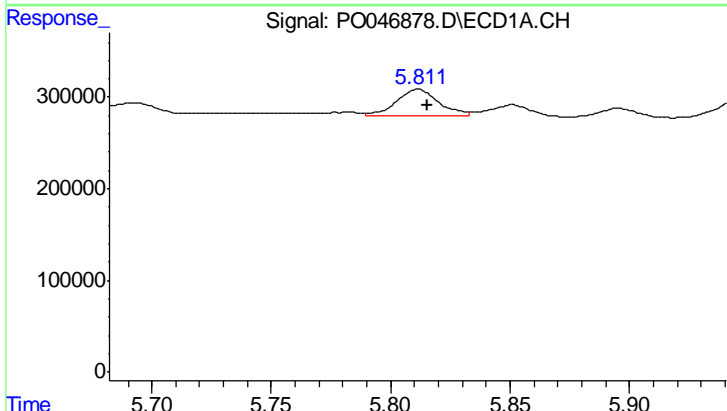
R.T.: 5.519 min  
 Delta R.T.: -0.005 min  
 Response: 419068  
 Conc: 67.31 ng/ml

Instrument :  
 ECD\_O  
 ClientSampleId :  
 AR1660ICC050



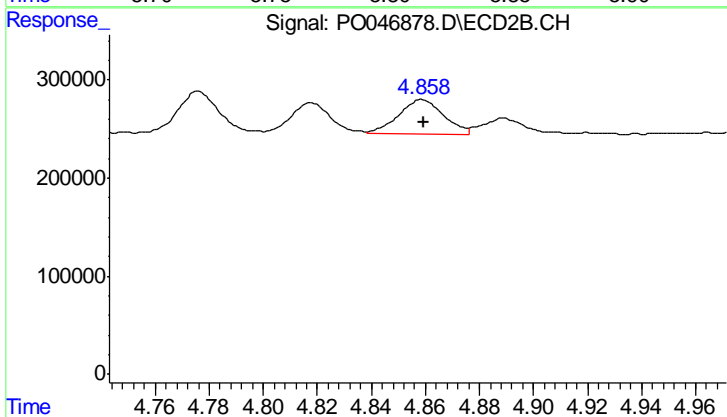
#5 AR-1016-3

R.T.: 4.818 min  
 Delta R.T.: -0.001 min  
 Response: 326874  
 Conc: 55.61 ng/ml



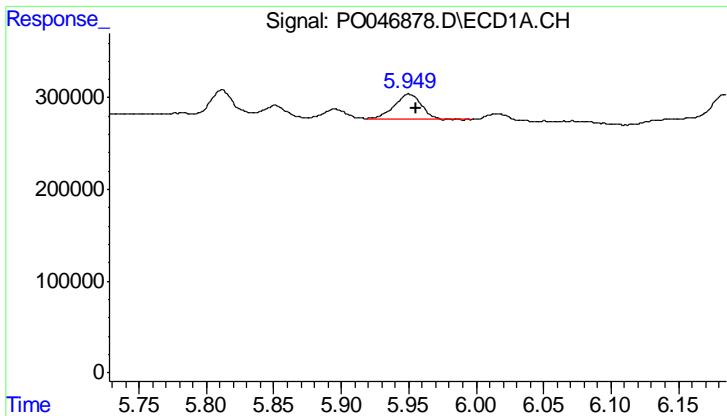
#6 AR-1016-4

R.T.: 5.812 min  
 Delta R.T.: -0.004 min  
 Response: 359696  
 Conc: 59.59 ng/ml



#6 AR-1016-4

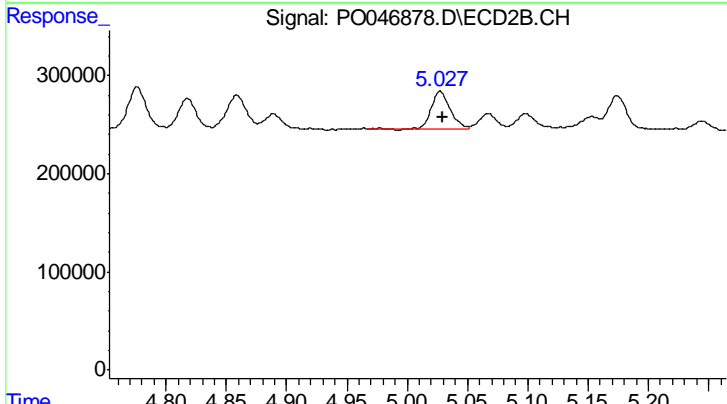
R.T.: 4.859 min  
 Delta R.T.: 0.000 min  
 Response: 408386  
 Conc: 62.16 ng/ml



#7 AR-1016-5

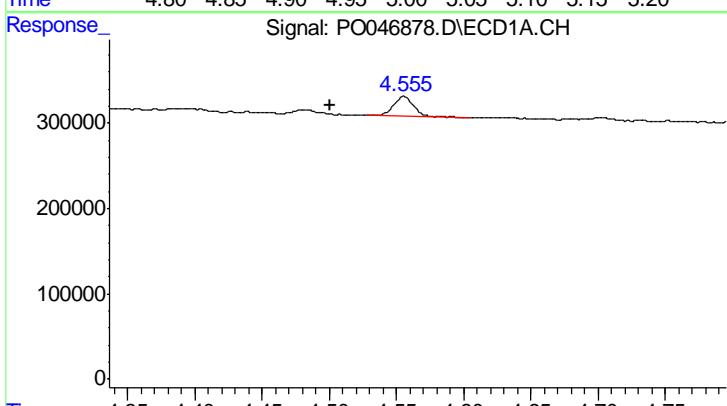
R.T.: 5.950 min  
 Delta R.T.: -0.005 min  
 Response: 379823  
 Conc: 56.33 ng/ml

Instrument :  
 ECD\_O  
 ClientSampleId :  
 AR1660ICC050



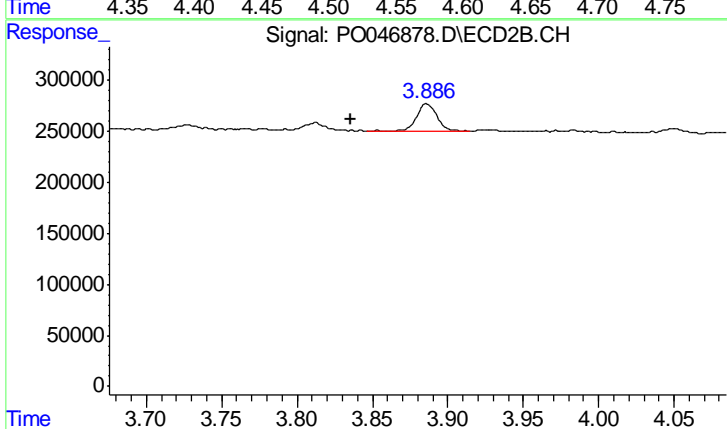
#7 AR-1016-5

R.T.: 5.027 min  
 Delta R.T.: -0.002 min  
 Response: 401399  
 Conc: 66.61 ng/ml



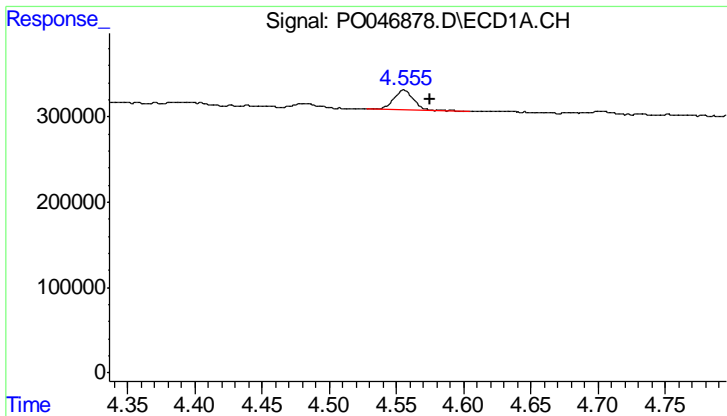
#9 AR-1221-2

R.T.: 4.556 min  
 Delta R.T.: 0.055 min  
 Response: 249022  
 Conc: 105.28 ng/ml



#9 AR-1221-2

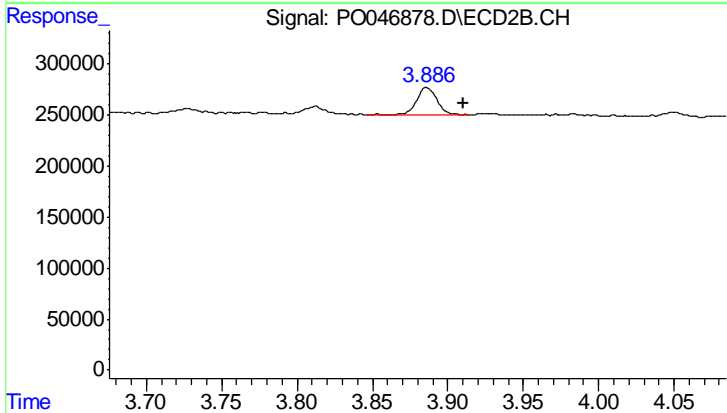
R.T.: 3.886 min  
 Delta R.T.: 0.051 min  
 Response: 258103  
 Conc: 119.72 ng/ml



#10 AR-1221-3

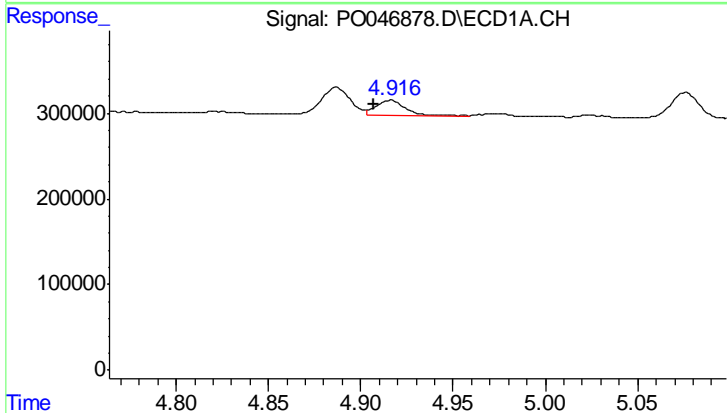
R.T.: 4.556 min  
 Delta R.T.: -0.020 min  
 Response: 249022  
 Conc: 32.94 ng/ml

Instrument :  
 ECD\_O  
 ClientSampleId :  
 AR1660ICC050



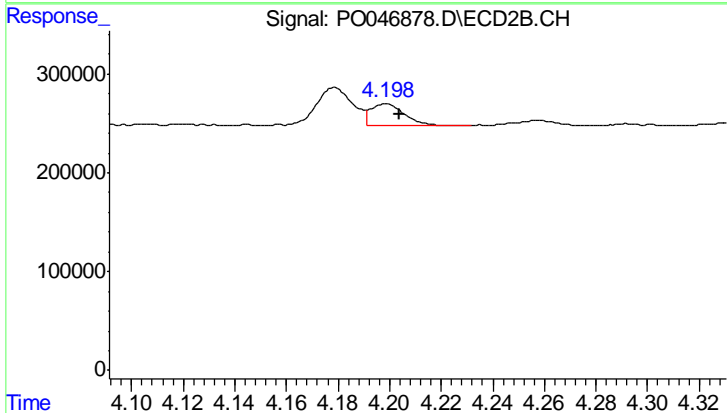
#10 AR-1221-3

R.T.: 3.886 min  
 Delta R.T.: -0.024 min  
 Response: 258103  
 Conc: 37.67 ng/ml



#11 AR-1232-1

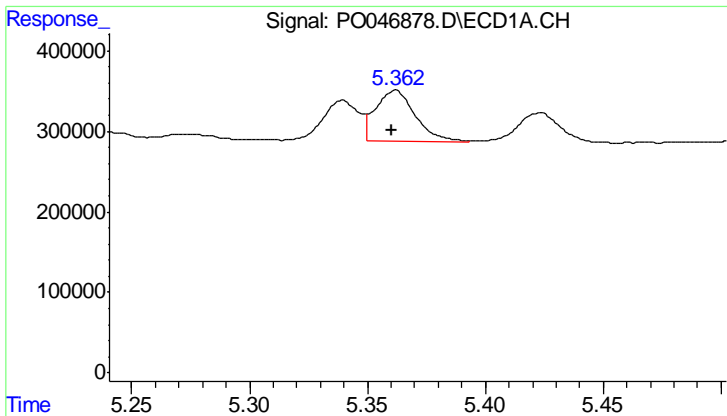
R.T.: 4.916 min  
 Delta R.T.: 0.010 min  
 Response: 187554  
 Conc: 76.73 ng/ml



#11 AR-1232-1

R.T.: 4.199 min  
 Delta R.T.: -0.005 min  
 Response: 203038  
 Conc: 87.47 ng/ml

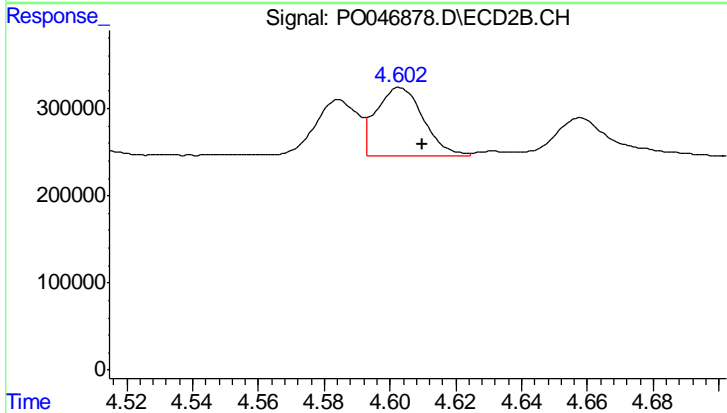




#12 AR-1232-2

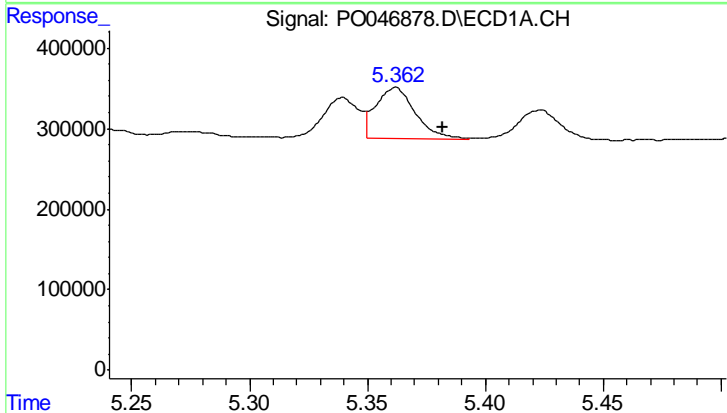
R.T.: 5.362 min  
 Delta R.T.: 0.002 min  
 Response: 743076  
 Conc: 209.90 ng/ml

Instrument :  
 ECD\_O  
 ClientSampleId :  
 AR1660ICC050



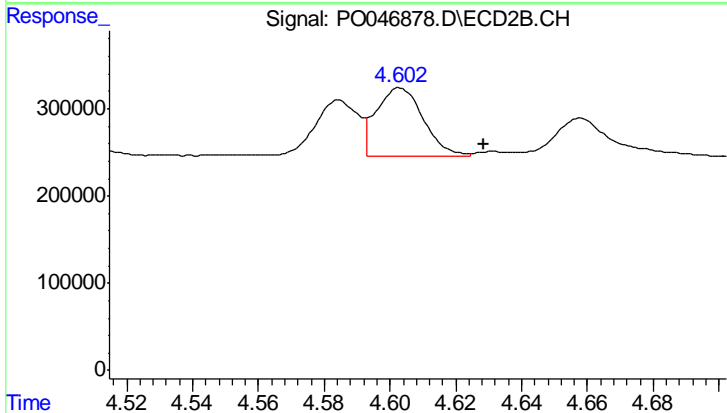
#12 AR-1232-2

R.T.: 4.603 min  
 Delta R.T.: -0.007 min  
 Response: 770171  
 Conc: 223.57 ng/ml



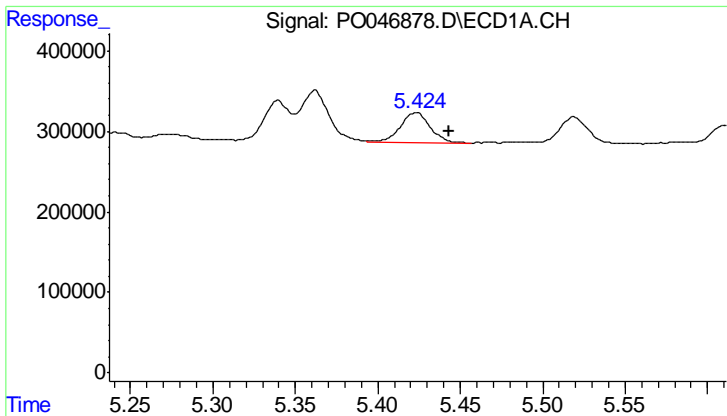
#13 AR-1232-3

R.T.: 5.362 min  
 Delta R.T.: -0.020 min  
 Response: 743076  
 Conc: 146.40 ng/ml



#13 AR-1232-3

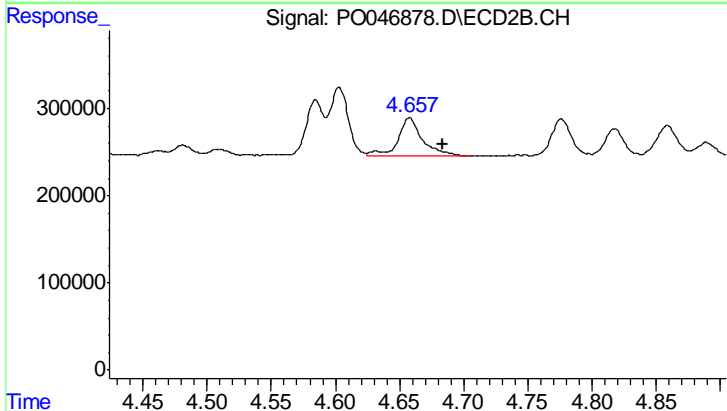
R.T.: 4.603 min  
 Delta R.T.: -0.026 min  
 Response: 770171  
 Conc: 161.44 ng/ml



#14 AR-1232-4

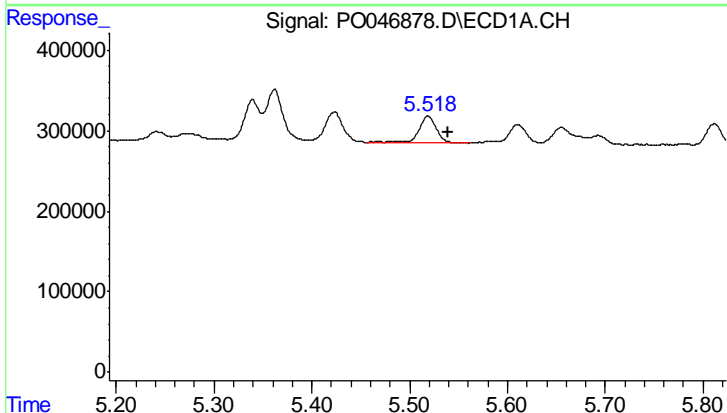
R.T.: 5.423 min  
 Delta R.T.: -0.020 min  
 Response: 465791  
 Conc: 142.94 ng/ml

Instrument :  
 ECD\_O  
 ClientSampleId :  
 AR1660ICC050



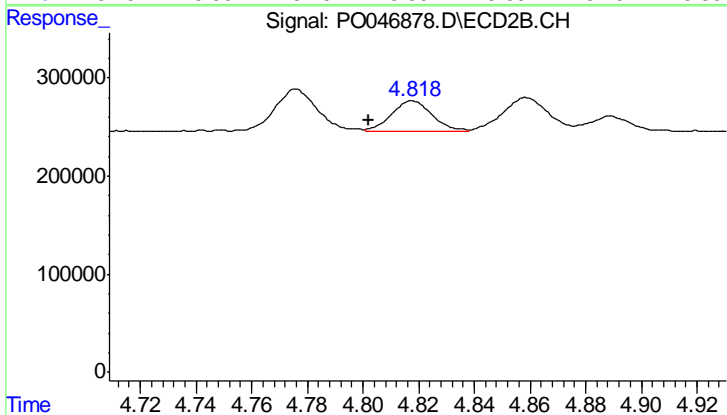
#14 AR-1232-4

R.T.: 4.658 min  
 Delta R.T.: -0.025 min  
 Response: 567055  
 Conc: 161.35 ng/ml



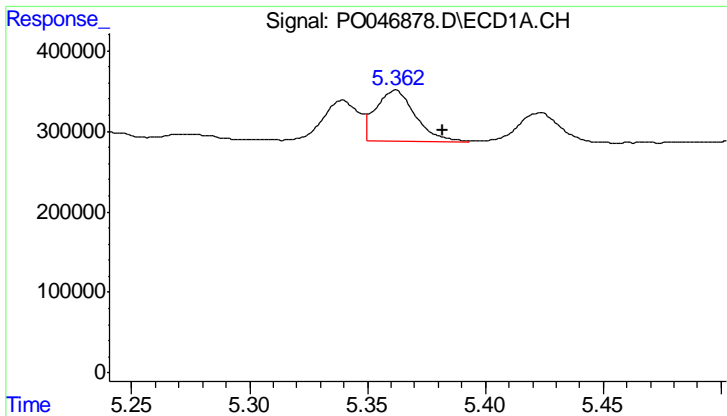
#15 AR-1232-5

R.T.: 5.519 min  
 Delta R.T.: -0.021 min  
 Response: 419068  
 Conc: 157.83 ng/ml



#15 AR-1232-5

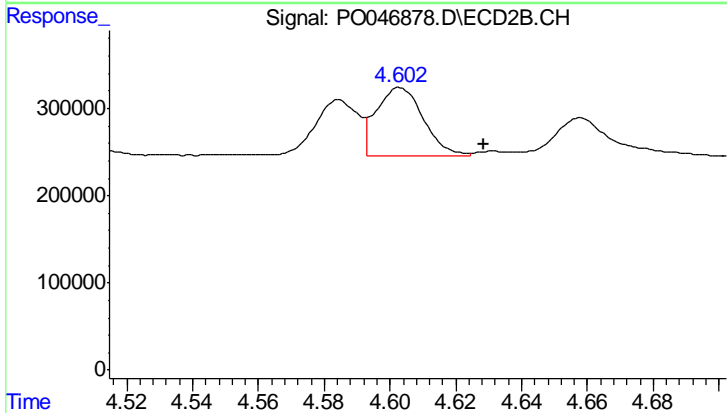
R.T.: 4.818 min  
 Delta R.T.: 0.015 min  
 Response: 326874  
 Conc: 117.35 ng/ml



#16 AR-1242-1

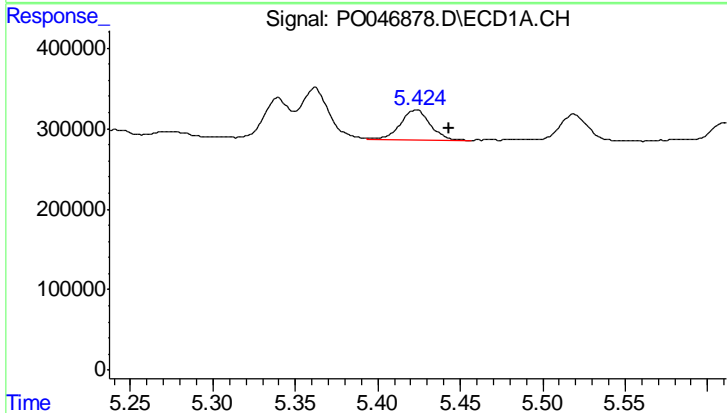
R.T.: 5.362 min  
 Delta R.T.: -0.020 min  
 Response: 743076  
 Conc: 73.08 ng/ml

Instrument :  
 ECD\_O  
 ClientSampleId :  
 AR1660ICC050



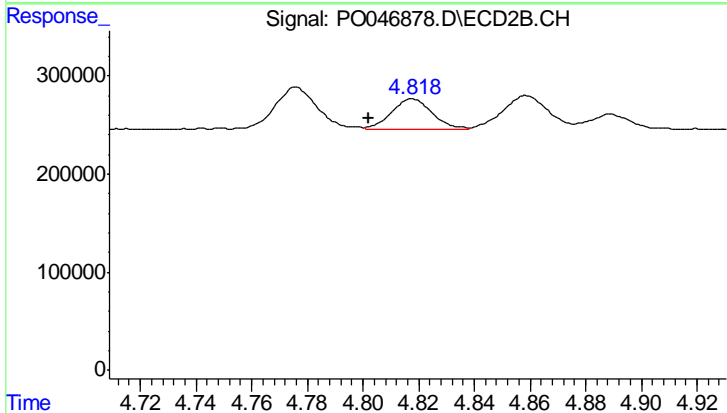
#16 AR-1242-1

R.T.: 4.603 min  
 Delta R.T.: -0.026 min  
 Response: 770171  
 Conc: 80.40 ng/ml



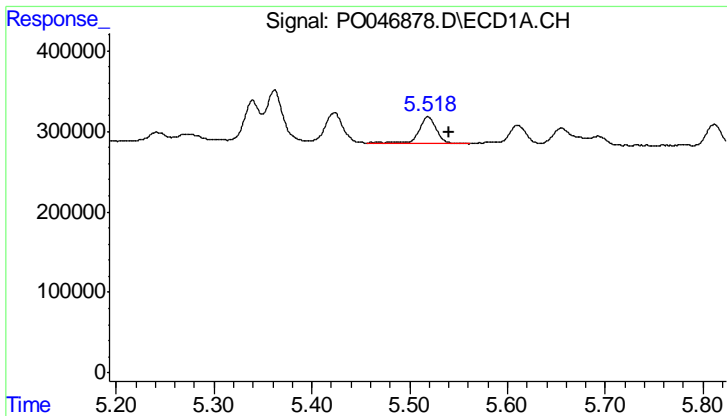
#17 AR-1242-2

R.T.: 5.423 min  
 Delta R.T.: -0.020 min  
 Response: 465791  
 Conc: 71.95 ng/ml



#17 AR-1242-2

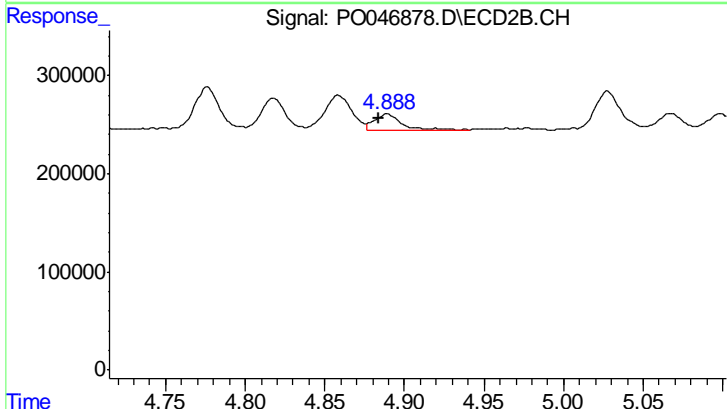
R.T.: 4.818 min  
 Delta R.T.: 0.016 min  
 Response: 326874  
 Conc: 58.89 ng/ml



#18 AR-1242-3

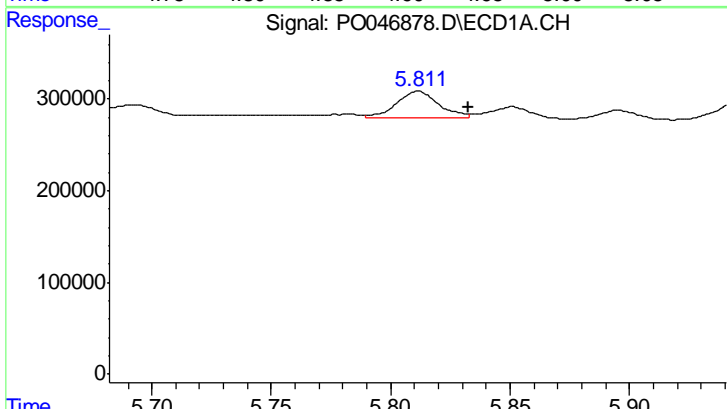
R.T.: 5.519 min  
 Delta R.T.: -0.021 min  
 Response: 419068  
 Conc: 76.92 ng/ml

Instrument :  
 ECD\_O  
 ClientSampleId :  
 AR1660ICC050



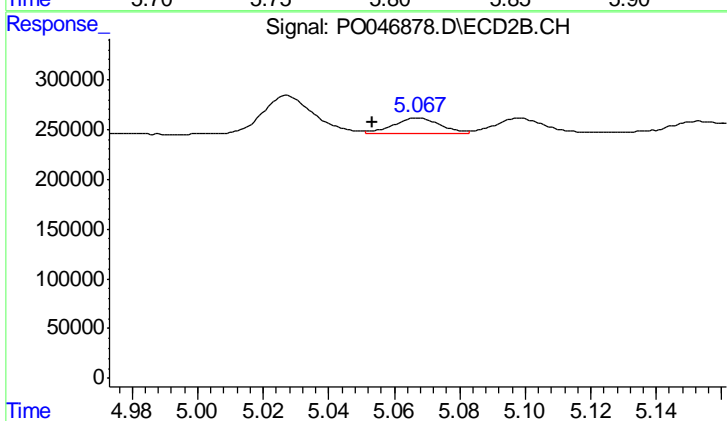
#18 AR-1242-3

R.T.: 4.889 min  
 Delta R.T.: 0.005 min  
 Response: 192212  
 Conc: 37.02 ng/ml



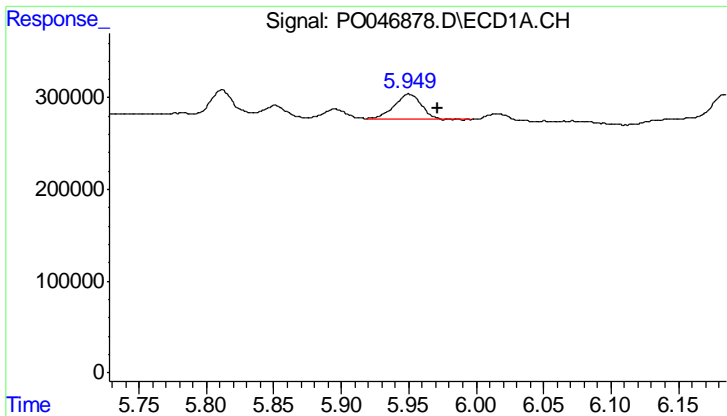
#19 AR-1242-4

R.T.: 5.812 min  
 Delta R.T.: -0.021 min  
 Response: 359696  
 Conc: 67.33 ng/ml



#19 AR-1242-4

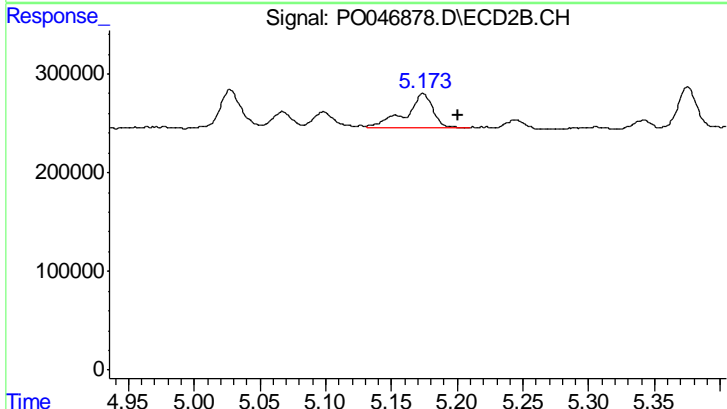
R.T.: 5.067 min  
 Delta R.T.: 0.014 min  
 Response: 158569  
 Conc: 27.94 ng/ml



#20 AR-1242-5

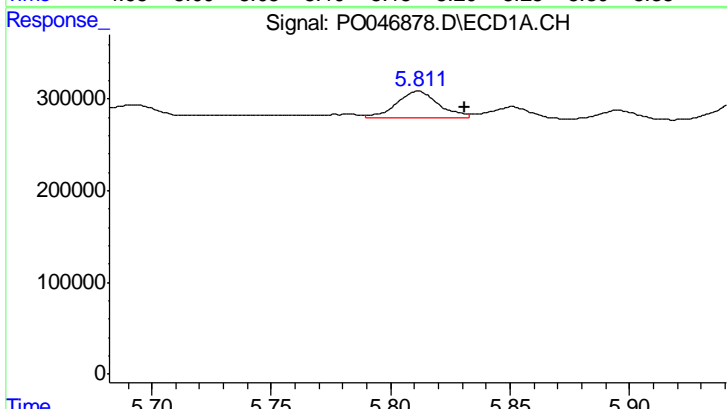
R.T.: 5.950 min  
 Delta R.T.: -0.022 min  
 Response: 379823  
 Conc: 62.97 ng/ml

Instrument :  
 ECD\_O  
 ClientSampleId :  
 AR1660ICC050



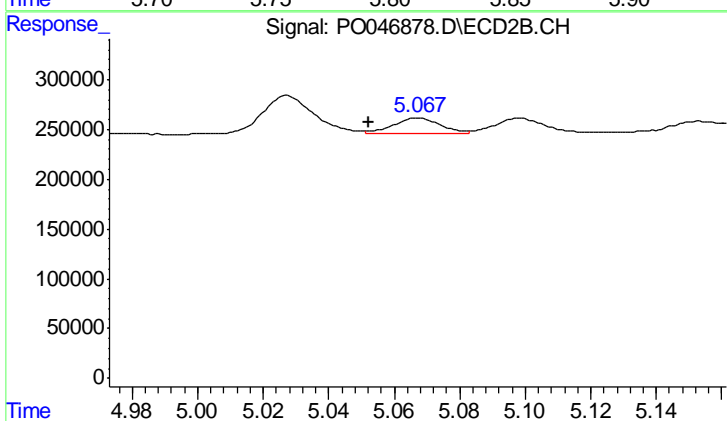
#20 AR-1242-5

R.T.: 5.174 min  
 Delta R.T.: -0.026 min  
 Response: 491502  
 Conc: 94.88 ng/ml



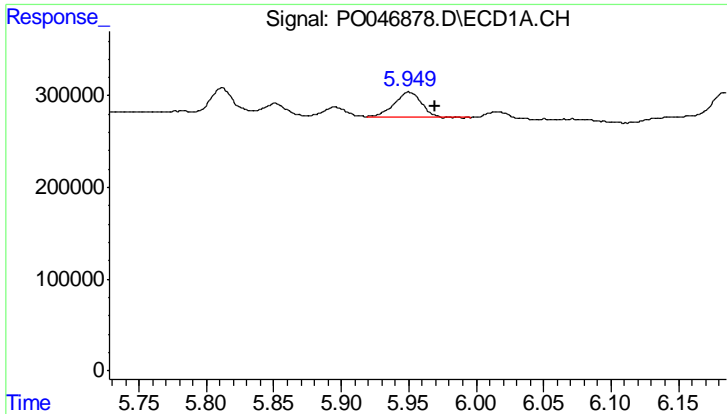
#21 AR-1248-1

R.T.: 5.812 min  
 Delta R.T.: -0.020 min  
 Response: 359696  
 Conc: 45.34 ng/ml



#21 AR-1248-1

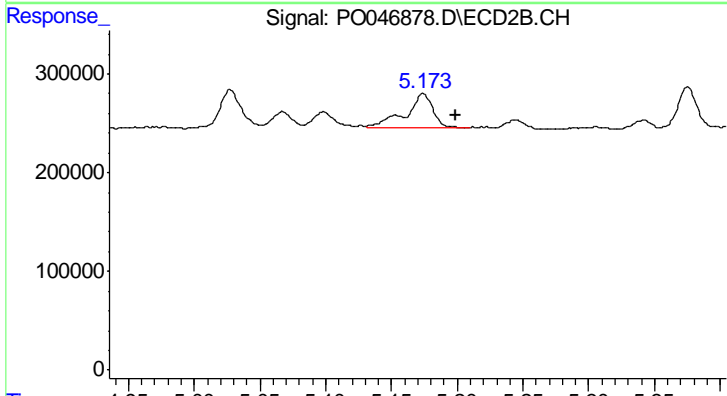
R.T.: 5.067 min  
 Delta R.T.: 0.015 min  
 Response: 158569  
 Conc: 18.75 ng/ml



#22 AR-1248-2

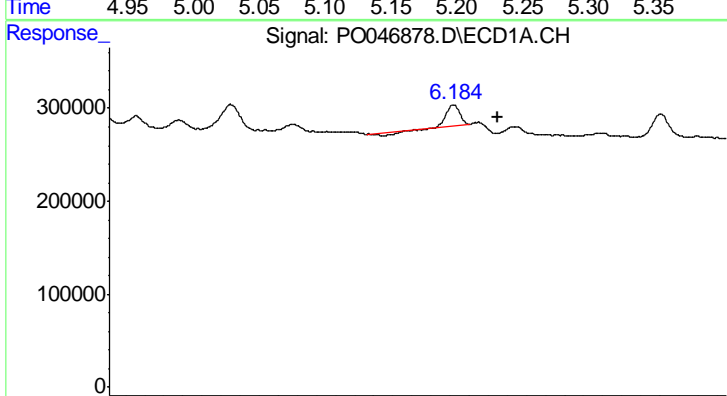
R.T.: 5.950 min  
 Delta R.T.: -0.020 min  
 Response: 379823  
 Conc: 53.64 ng/ml

Instrument :  
 ECD\_O  
 ClientSampleId :  
 AR1660ICC050



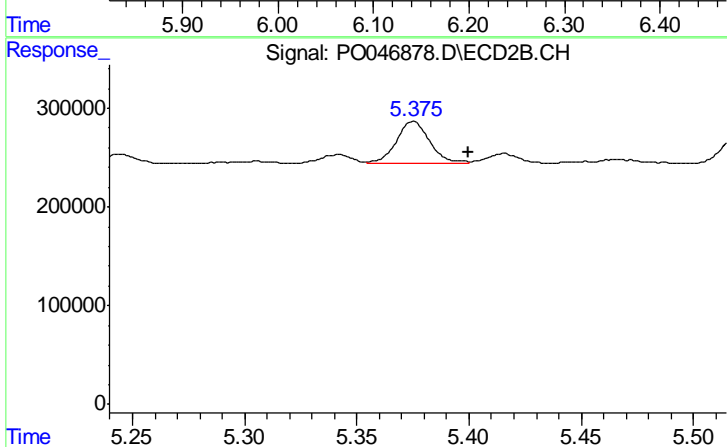
#22 AR-1248-2

R.T.: 5.174 min  
 Delta R.T.: -0.025 min  
 Response: 491502  
 Conc: 77.00 ng/ml



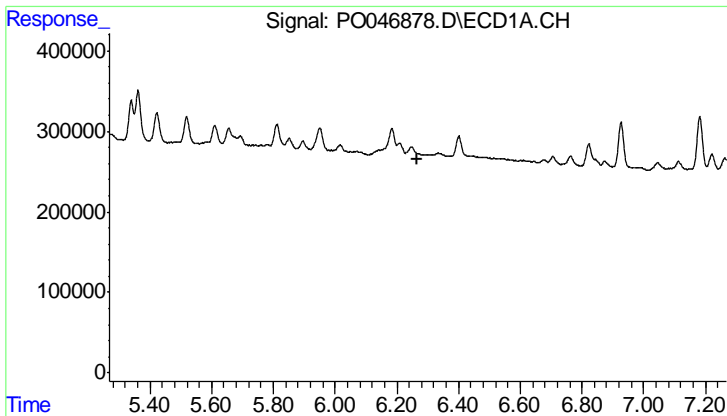
#23 AR-1248-3

R.T.: 6.184 min  
 Delta R.T.: -0.047 min  
 Response: 177310  
 Conc: 19.35 ng/ml



#23 AR-1248-3

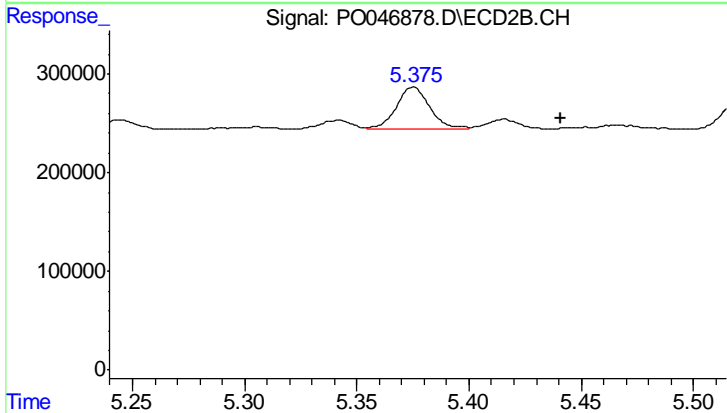
R.T.: 5.375 min  
 Delta R.T.: -0.024 min  
 Response: 448754  
 Conc: 36.47 ng/ml



#24 AR-1248-4

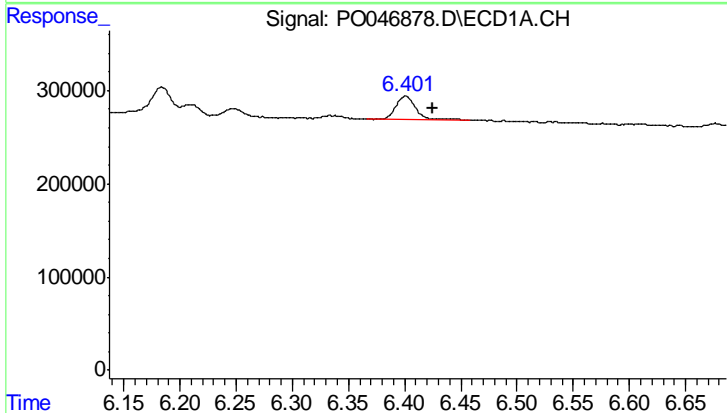
R.T.: 0.000 min  
 Exp R.T.: 6.268 min  
 Response: 0  
 Conc: N.D.

Instrument :  
 ECD\_O  
 ClientSampleId :  
 AR1660ICC050



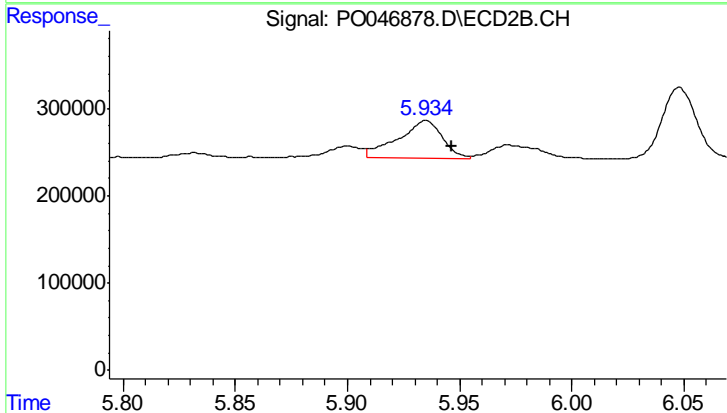
#24 AR-1248-4

R.T.: 5.375 min  
 Delta R.T.: -0.065 min  
 Response: 448754  
 Conc: 51.55 ng/ml



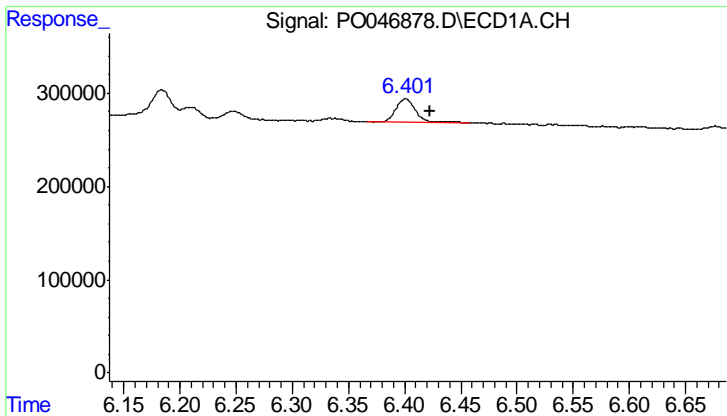
#25 AR-1248-5

R.T.: 6.401 min  
 Delta R.T.: -0.023 min  
 Response: 312887  
 Conc: 34.38 ng/ml



#25 AR-1248-5

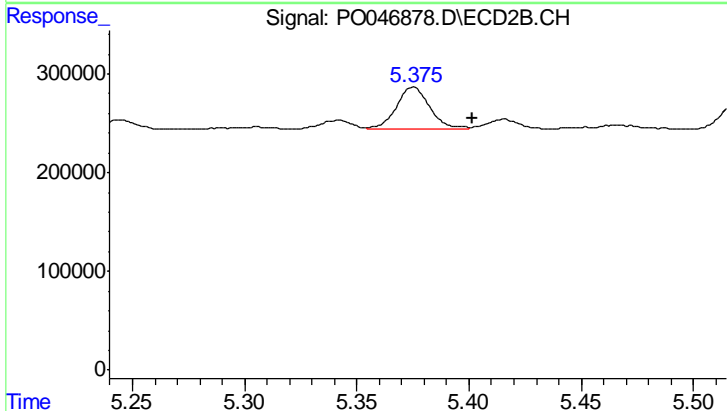
R.T.: 5.935 min  
 Delta R.T.: -0.011 min  
 Response: 595187  
 Conc: 101.66 ng/ml



#26 AR-1254-1

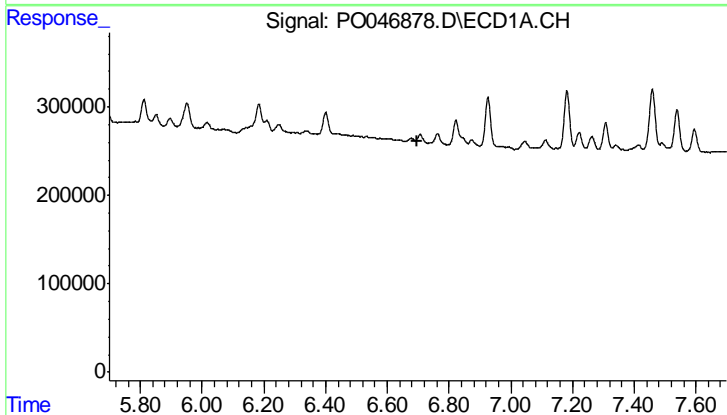
R.T.: 6.401 min  
 Delta R.T.: -0.022 min  
 Response: 312887  
 Conc: 22.44 ng/ml

Instrument :  
 ECD\_O  
 ClientSampleId :  
 AR1660ICC050



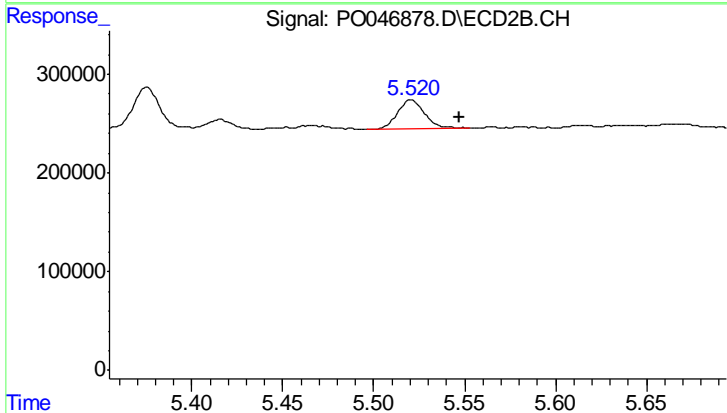
#26 AR-1254-1

R.T.: 5.375 min  
 Delta R.T.: -0.026 min  
 Response: 448754  
 Conc: 33.56 ng/ml



#27 AR-1254-2

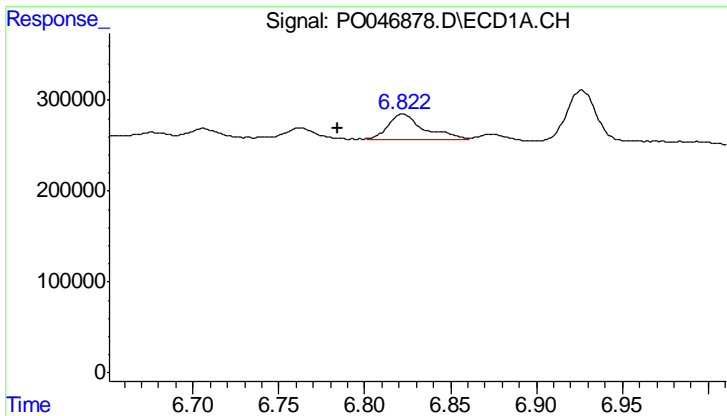
R.T.: 0.000 min  
 Exp R.T. : 6.699 min  
 Response: 0  
 Conc: N.D.



#27 AR-1254-2

R.T.: 5.521 min  
 Delta R.T.: -0.026 min  
 Response: 309137  
 Conc: 26.74 ng/ml

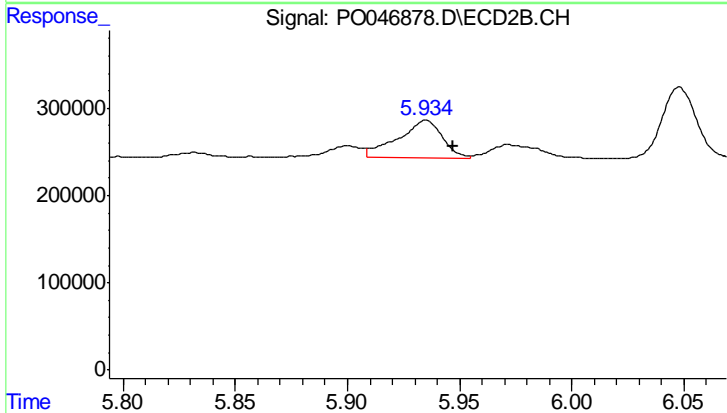




#28 AR-1254-3

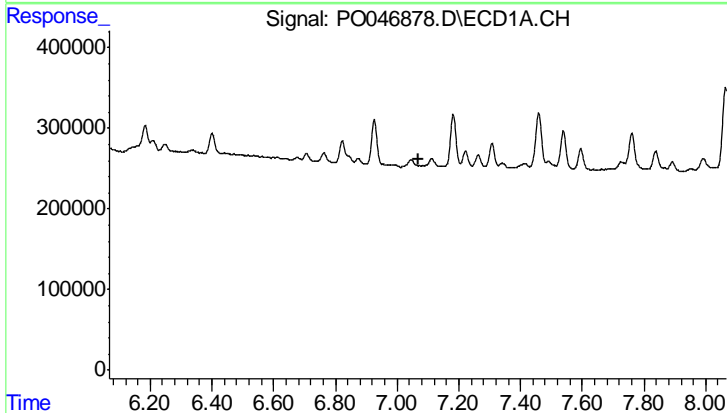
R.T.: 6.822 min  
 Delta R.T.: 0.038 min  
 Response: 412202  
 Conc: 26.96 ng/ml

Instrument :  
 ECD\_O  
 ClientSampleId :  
 AR1660ICC050



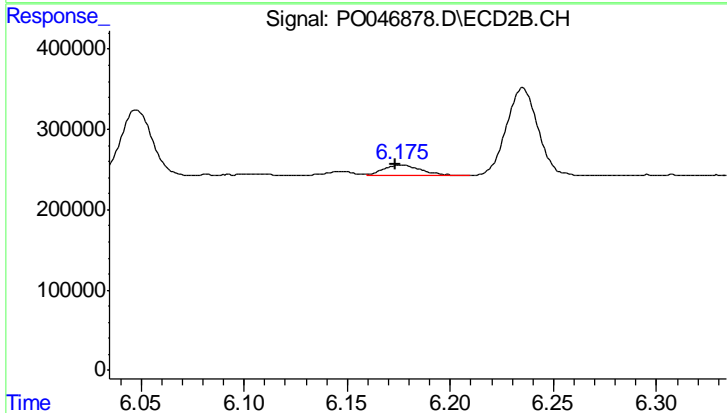
#28 AR-1254-3

R.T.: 5.935 min  
 Delta R.T.: -0.012 min  
 Response: 595187  
 Conc: 30.24 ng/ml



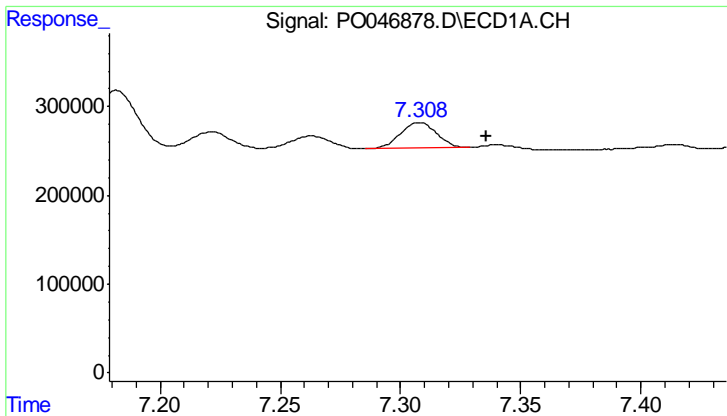
#29 AR-1254-4

R.T.: 0.000 min  
 Exp R.T. : 7.068 min  
 Response: 0  
 Conc: N.D.



#29 AR-1254-4

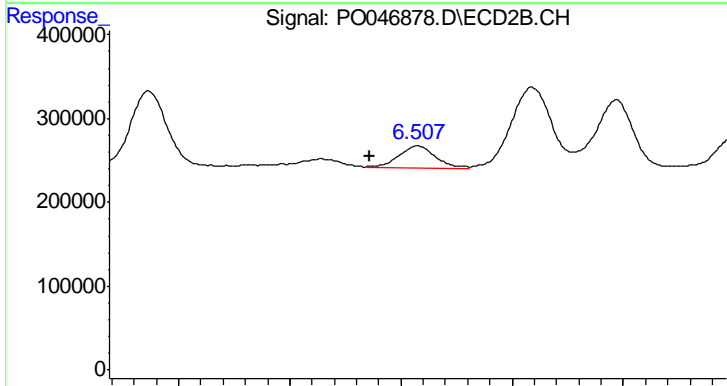
R.T.: 6.176 min  
 Delta R.T.: 0.002 min  
 Response: 171266  
 Conc: 13.58 ng/ml



#30 AR-1254-5

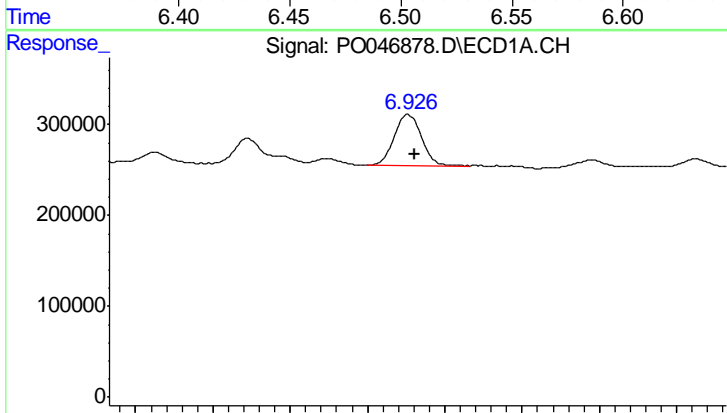
R.T.: 7.308 min  
 Delta R.T.: -0.028 min  
 Response: 303123  
 Conc: 34.16 ng/ml

Instrument :  
 ECD\_O  
 ClientSampleId :  
 AR1660ICC050



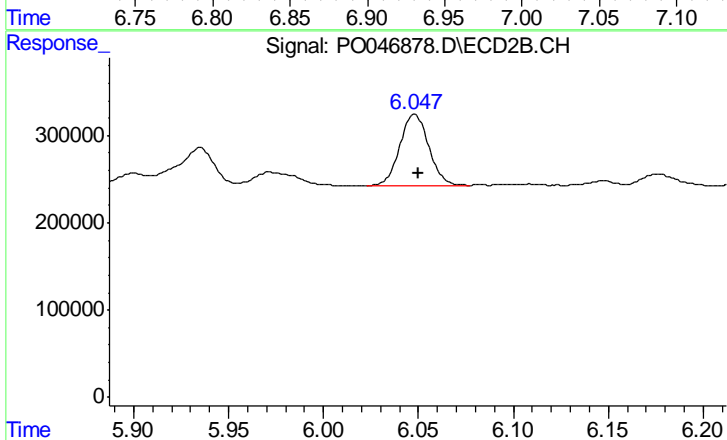
#30 AR-1254-5

R.T.: 6.508 min  
 Delta R.T.: 0.022 min  
 Response: 299070  
 Conc: 32.97 ng/ml



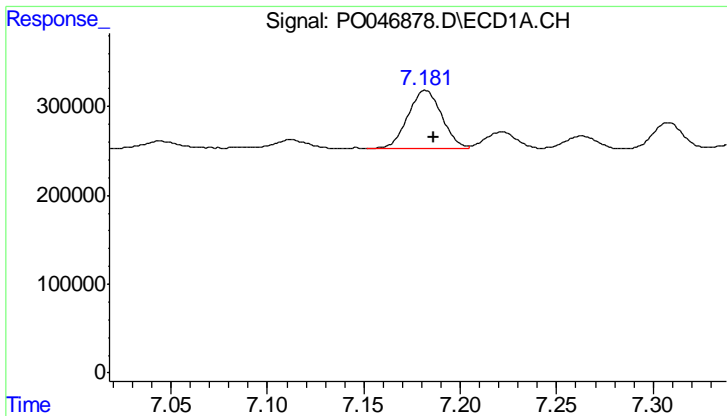
#31 AR-1260-1

R.T.: 6.926 min  
 Delta R.T.: -0.004 min  
 Response: 661813  
 Conc: 57.06 ng/ml



#31 AR-1260-1

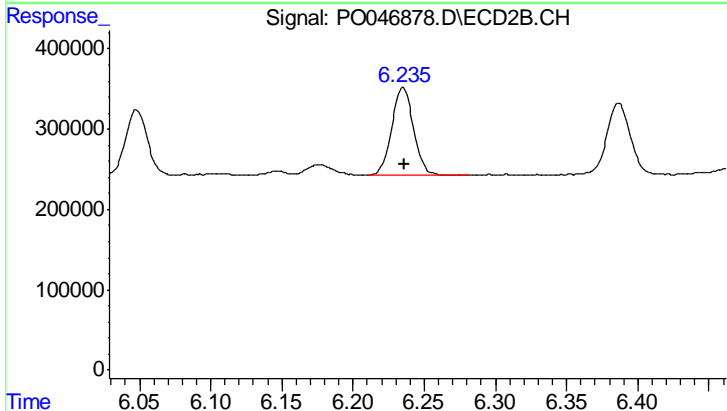
R.T.: 6.048 min  
 Delta R.T.: -0.002 min  
 Response: 866122  
 Conc: 63.22 ng/ml



#32 AR-1260-2

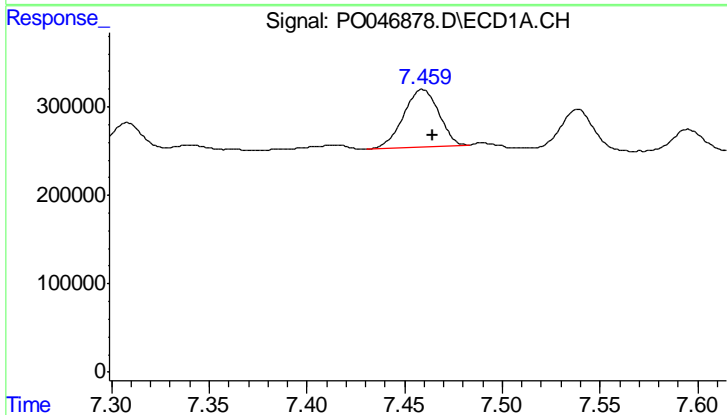
R.T.: 7.182 min  
 Delta R.T.: -0.004 min  
 Response: 804720  
 Conc: 58.66 ng/ml

Instrument :  
 ECD\_O  
 ClientSampleId :  
 AR1660ICC050



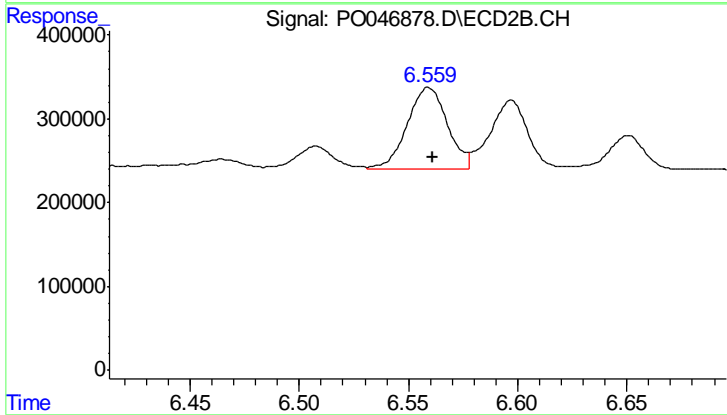
#32 AR-1260-2

R.T.: 6.235 min  
 Delta R.T.: -0.001 min  
 Response: 1172845  
 Conc: 68.84 ng/ml



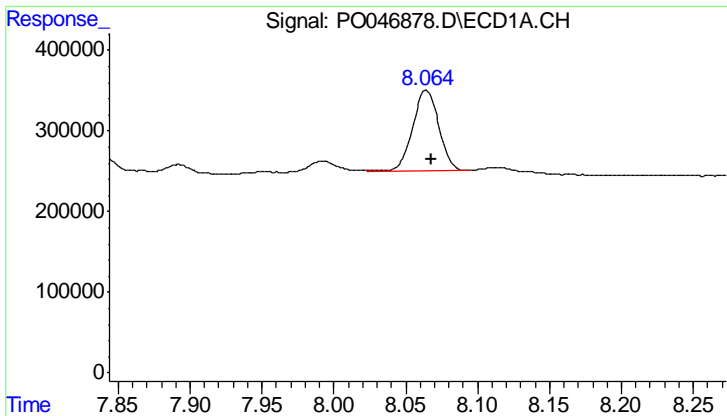
#33 AR-1260-3

R.T.: 7.459 min  
 Delta R.T.: -0.005 min  
 Response: 813160  
 Conc: 49.72 ng/ml



#33 AR-1260-3

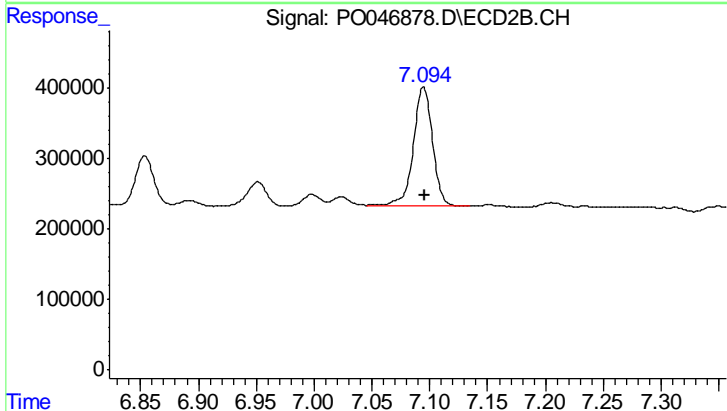
R.T.: 6.559 min  
 Delta R.T.: -0.002 min  
 Response: 1232139  
 Conc: 65.16 ng/ml



#34 AR-1260-4

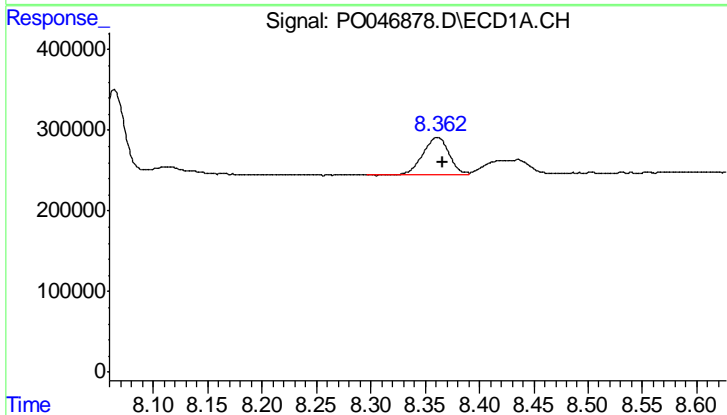
R.T.: 8.064 min  
 Delta R.T.: -0.004 min  
 Response: 1287085  
 Conc: 60.01 ng/ml

Instrument :  
 ECD\_O  
 ClientSampleId :  
 AR1660ICC050



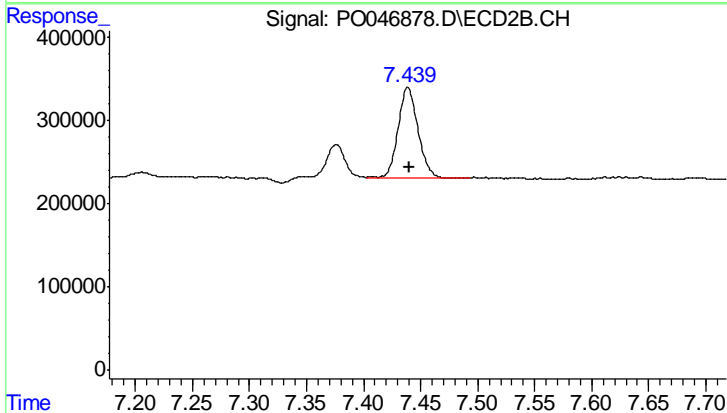
#34 AR-1260-4

R.T.: 7.094 min  
 Delta R.T.: -0.002 min  
 Response: 1977550  
 Conc: 66.24 ng/ml



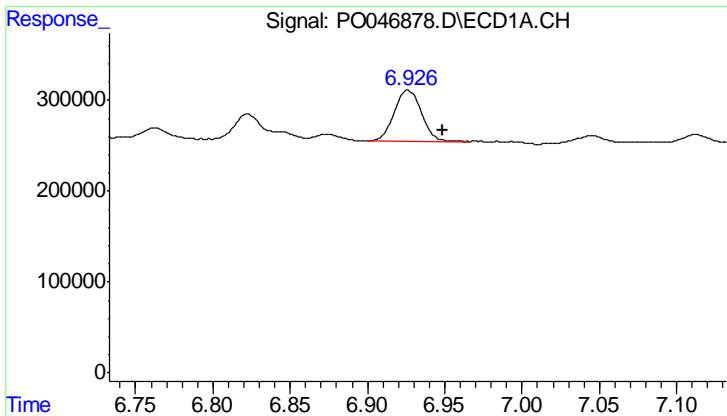
#35 AR-1260-5

R.T.: 8.362 min  
 Delta R.T.: -0.005 min  
 Response: 761628  
 Conc: 55.48 ng/ml



#35 AR-1260-5

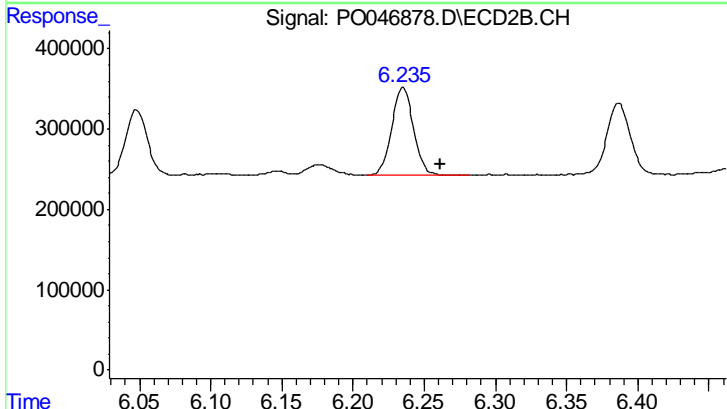
R.T.: 7.439 min  
 Delta R.T.: -0.002 min  
 Response: 1331589  
 Conc: 64.65 ng/ml



#36 AR-1262-1

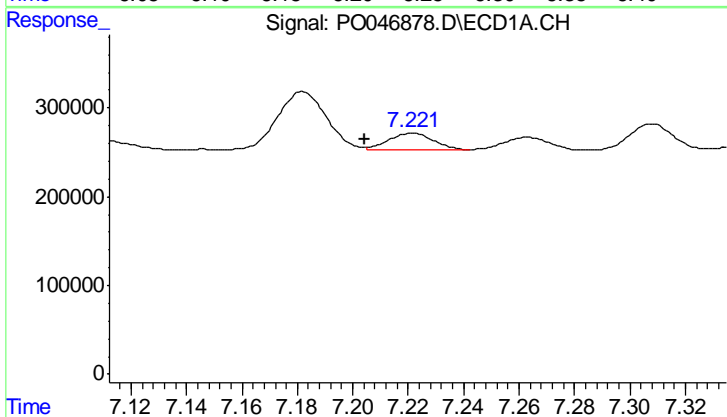
R.T.: 6.926 min  
 Delta R.T.: -0.023 min  
 Response: 661813  
 Conc: 69.47 ng/ml

Instrument :  
 ECD\_O  
 ClientSampleId :  
 AR1660ICC050



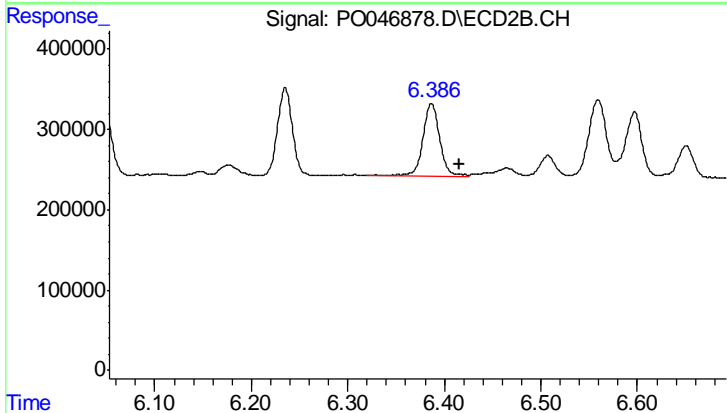
#36 AR-1262-1

R.T.: 6.235 min  
 Delta R.T.: -0.027 min  
 Response: 1172845  
 Conc: 89.55 ng/ml



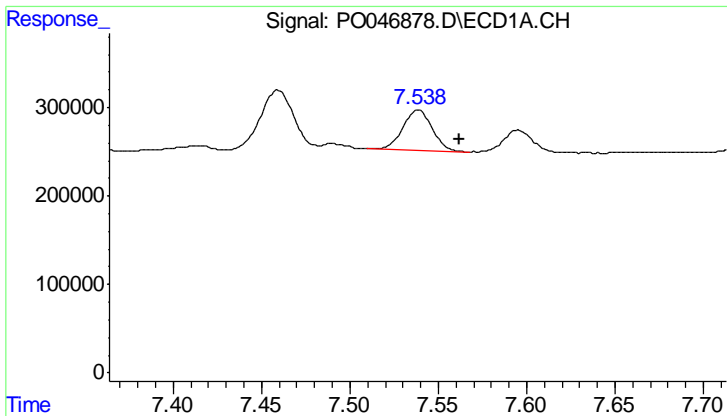
#37 AR-1262-2

R.T.: 7.222 min  
 Delta R.T.: 0.017 min  
 Response: 217386  
 Conc: 19.52 ng/ml



#37 AR-1262-2

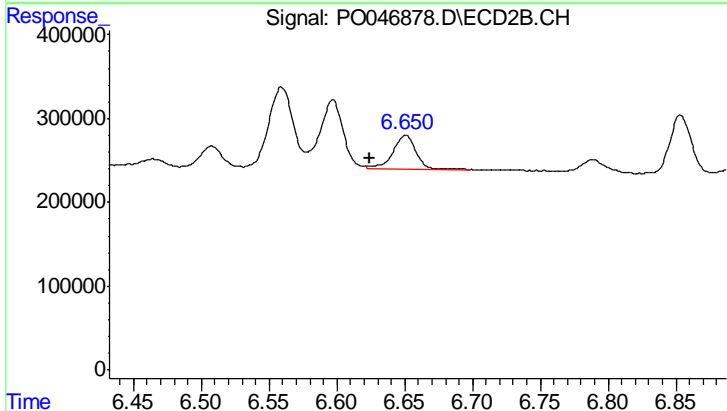
R.T.: 6.387 min  
 Delta R.T.: -0.029 min  
 Response: 1071088  
 Conc: 82.68 ng/ml



#38 AR-1262-3

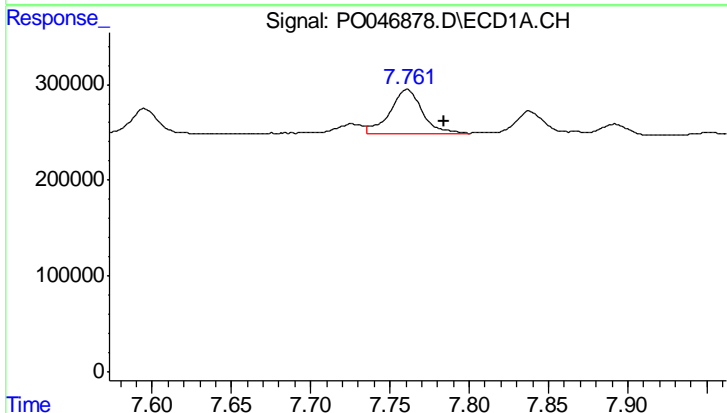
R.T.: 7.539 min  
 Delta R.T.: -0.024 min  
 Response: 524334  
 Conc: 36.62 ng/ml

Instrument :  
 ECD\_O  
 ClientSampleId :  
 AR1660ICC050



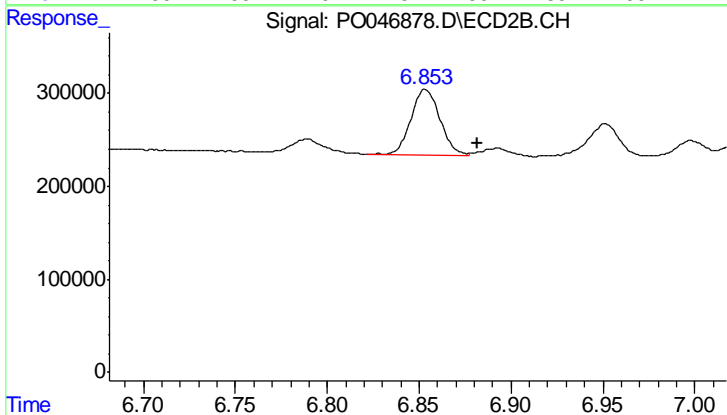
#38 AR-1262-3

R.T.: 6.651 min  
 Delta R.T.: 0.026 min  
 Response: 476489  
 Conc: 27.21 ng/ml



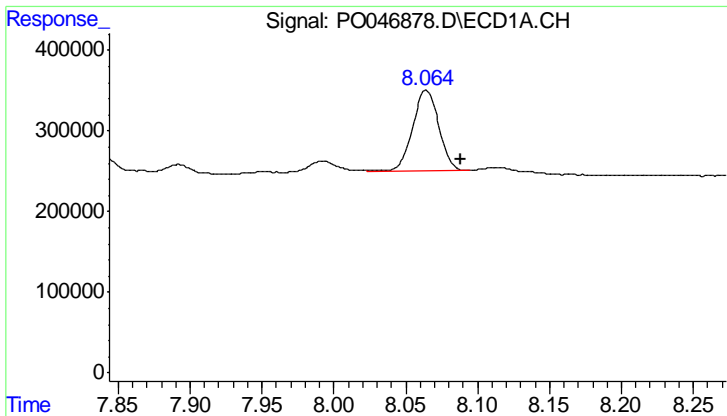
#39 AR-1262-4

R.T.: 7.761 min  
 Delta R.T.: -0.023 min  
 Response: 642692  
 Conc: 47.80 ng/ml



#39 AR-1262-4

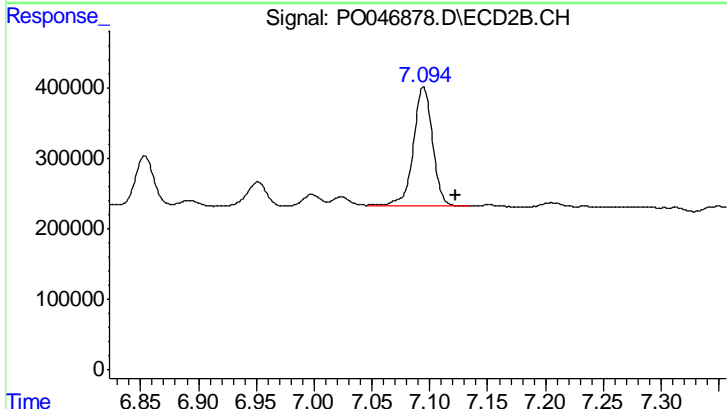
R.T.: 6.853 min  
 Delta R.T.: -0.029 min  
 Response: 775322  
 Conc: 50.72 ng/ml



#40 AR-1262-5

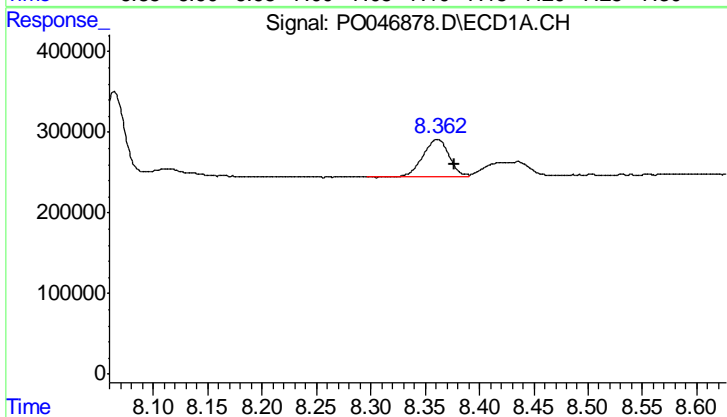
R.T.: 8.064 min  
 Delta R.T.: -0.024 min  
 Response: 1287085  
 Conc: 53.18 ng/ml

Instrument :  
 ECD\_O  
 ClientSampleId :  
 AR1660ICC050



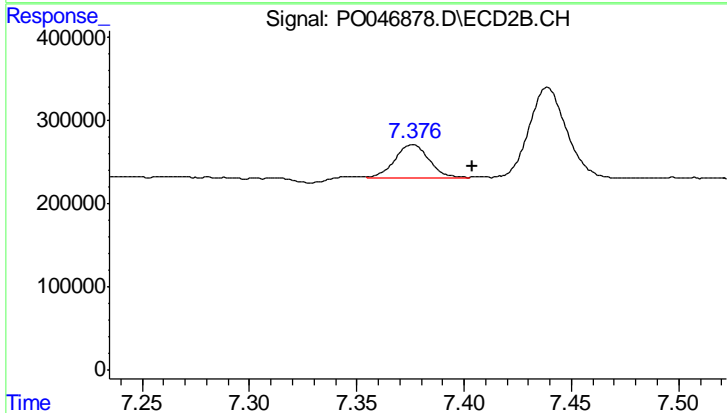
#40 AR-1262-5

R.T.: 7.094 min  
 Delta R.T.: -0.028 min  
 Response: 1977550  
 Conc: 64.06 ng/ml



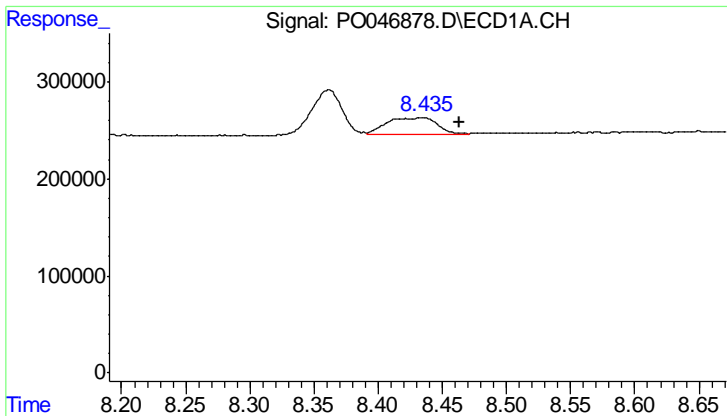
#41 AR-1268-1

R.T.: 8.362 min  
 Delta R.T.: -0.015 min  
 Response: 761628  
 Conc: 31.25 ng/ml



#41 AR-1268-1

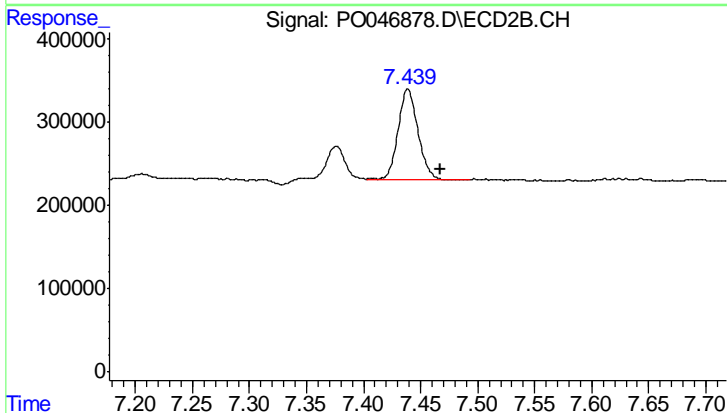
R.T.: 7.376 min  
 Delta R.T.: -0.028 min  
 Response: 445127  
 Conc: 15.91 ng/ml



#42 AR-1268-2

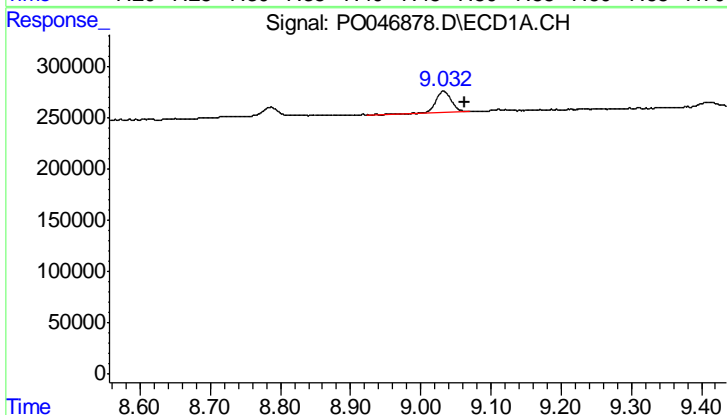
R.T.: 8.435 min  
 Delta R.T.: -0.028 min  
 Response: 465638  
 Conc: 20.55 ng/ml

Instrument :  
 ECD\_O  
 ClientSampleId :  
 AR1660ICC050



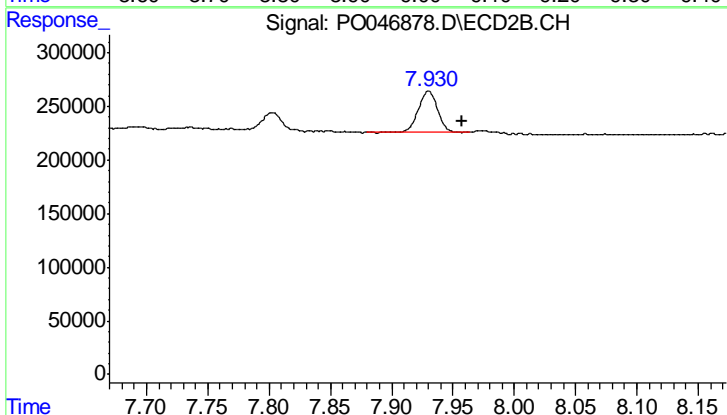
#42 AR-1268-2

R.T.: 7.439 min  
 Delta R.T.: -0.029 min  
 Response: 1331589  
 Conc: 48.34 ng/ml



#44 AR-1268-4

R.T.: 9.032 min  
 Delta R.T.: -0.030 min  
 Response: 313852  
 Conc: 37.01 ng/ml



#44 AR-1268-4

R.T.: 7.930 min  
 Delta R.T.: -0.027 min  
 Response: 417963  
 Conc: 43.91 ng/ml