

Data Path : Z:\pestpcbsrv\HPCHEM1\ECD\_0\Data\P0071919\  
 Data File : P0058092.D  
 Signal(s) : Signal #1: ECD1A.CH Signal #2: ECD2B.CH  
 Acq On : 18 Jul 2019 12:45  
 Operator : SM/AJ  
 Sample : K3826-03  
 Misc :  
 ALS Vial : 10 Sample Multiplier: 1

Instrument :  
 ECD\_0  
 ClientSampleId :  
 RBR-200036

Integration File signal 1: autoint1.e  
 Integration File signal 2: autoint2.e  
 Quant Time: Jul 18 13:02:52 2019  
 Quant Method : Z:\pestpcbsrv\HPCHEM1\ECD\_0\methods\P0071719.M  
 Quant Title : GC EXTRACTABLES  
 QLast Update : Wed Jul 17 11:13:08 2019  
 Response via : Initial Calibration  
 Integrator: ChemStation 6890 Scale Mode: Small noise peaks clipped

Volume Inj. : 2 µl  
 Signal #1 Phase : ZB-MR1 Signal #2 Phase: ZB-MR2  
 Signal #1 Info : 30Mx0.32mmx 0.50µ Signal #2 Info : 30M x 0.32mm x 0.25µm

Compound	RT#1	RT#2	Resp#1	Resp#2	ng/ml	ng/ml
-----						
System Monitoring Compounds						
1) SA Tetrachlo...	4.197	3.540	882803	807513	26.052	25.177
2) SA Decachlor...	9.711	8.442	697737	465297	13.639	13.575
Target Compounds						
3) L1 AR-1016-1	5.425	0.000	17190	0	11.139	N.D. #
4) L1 AR-1016-2	5.425	0.000	17190	0	7.610	N.D. #
5) L1 AR-1016-3	5.425	0.000	17190	0	12.146	N.D. #
6) L1 AR-1016-4	5.478	0.000	7889	0	6.927	N.D. #
7) L1 AR-1016-5	5.839	0.000	37135	0	32.374	N.D. #
9) L2 AR-1221-2	4.493	0.000	18788	0	60.744	N.D. #
10) L2 AR-1221-3	0.000	3.951	0	38017	N.D.	44.877 #
11) L3 AR-1232-1	0.000	3.951	0	38017	N.D.	53.929 #
12) L3 AR-1232-2	5.034	0.000	15877	0	34.331	N.D. #
13) L3 AR-1232-3	5.425	0.000	17190	0	17.260	N.D. #
14) L3 AR-1232-4	5.478	0.000	7889	0	15.820	N.D. #
15) L3 AR-1232-5	5.669	0.000	30275	0	80.291	N.D. #
16) L4 AR-1242-1	5.425	0.000	17190	0	14.035	N.D. #
17) L4 AR-1242-2	5.425	0.000	17190	0	9.362	N.D. #
18) L4 AR-1242-3	5.425	0.000	17190	0	14.804	N.D. #
19) L4 AR-1242-4	5.478	0.000	7889	0	8.367	N.D. #
21) L5 AR-1248-1	5.425	0.000	17190	0	18.388	N.D. #
22) L5 AR-1248-2	5.669	0.000	30275	0	22.469	N.D. #
23) L5 AR-1248-3	5.839	0.000	37135	0	23.954	N.D. #
24) L5 AR-1248-4	6.190	0.000	56847	0	29.035	N.D. #
26) L6 AR-1254-1	6.190	0.000	56847	0	28.927	N.D. #
27) L6 AR-1254-2	6.431	0.000	86253	0	26.385	N.D. #
28) L6 AR-1254-3	6.796	0.000	98022	0	27.786	N.D. #
29) L6 AR-1254-4	7.000	0.000	50031	0	16.909	N.D. #
31) L7 AR-1260-1	6.940	0.000	15356	0	6.140	N.D. #
32) L7 AR-1260-2	7.210	0.000	110871	0	31.534	N.D. #
43) L9 AR-1268-3	0.000	7.580	0	55483	N.D.	9.211 #

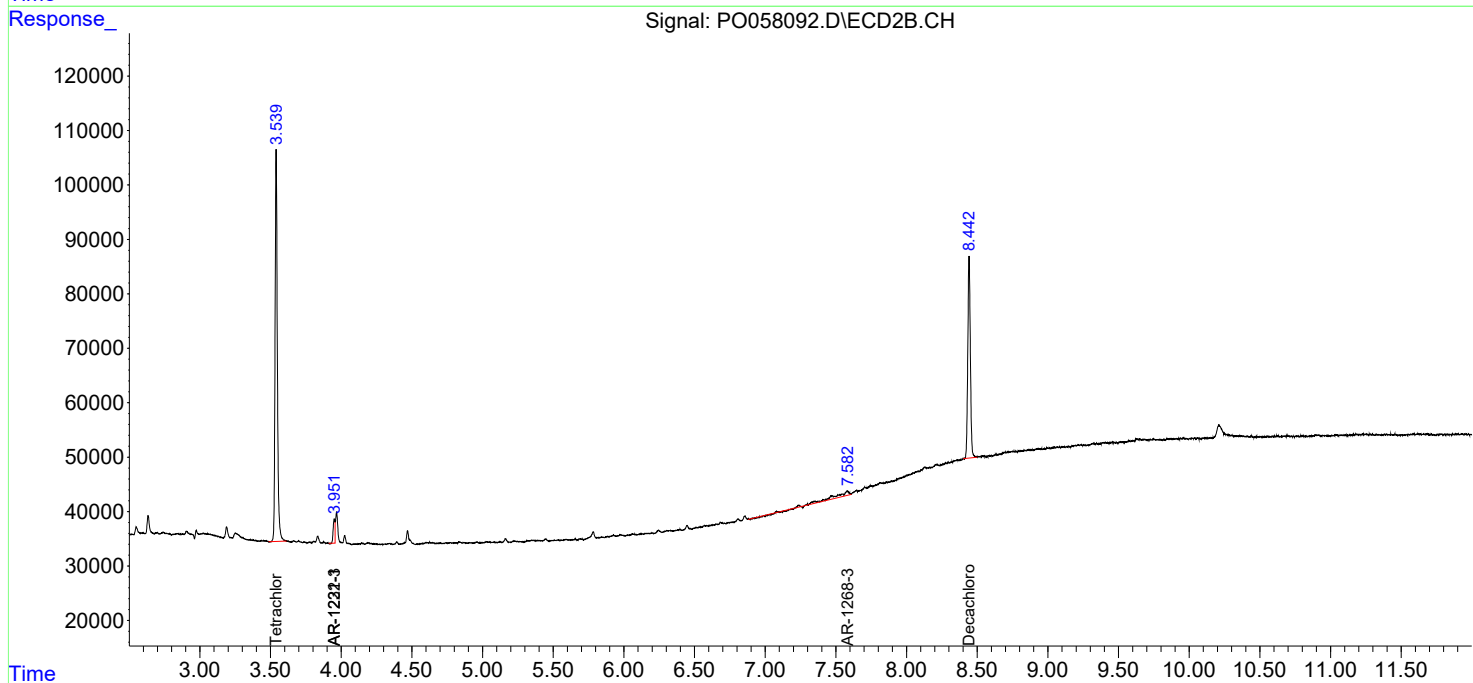
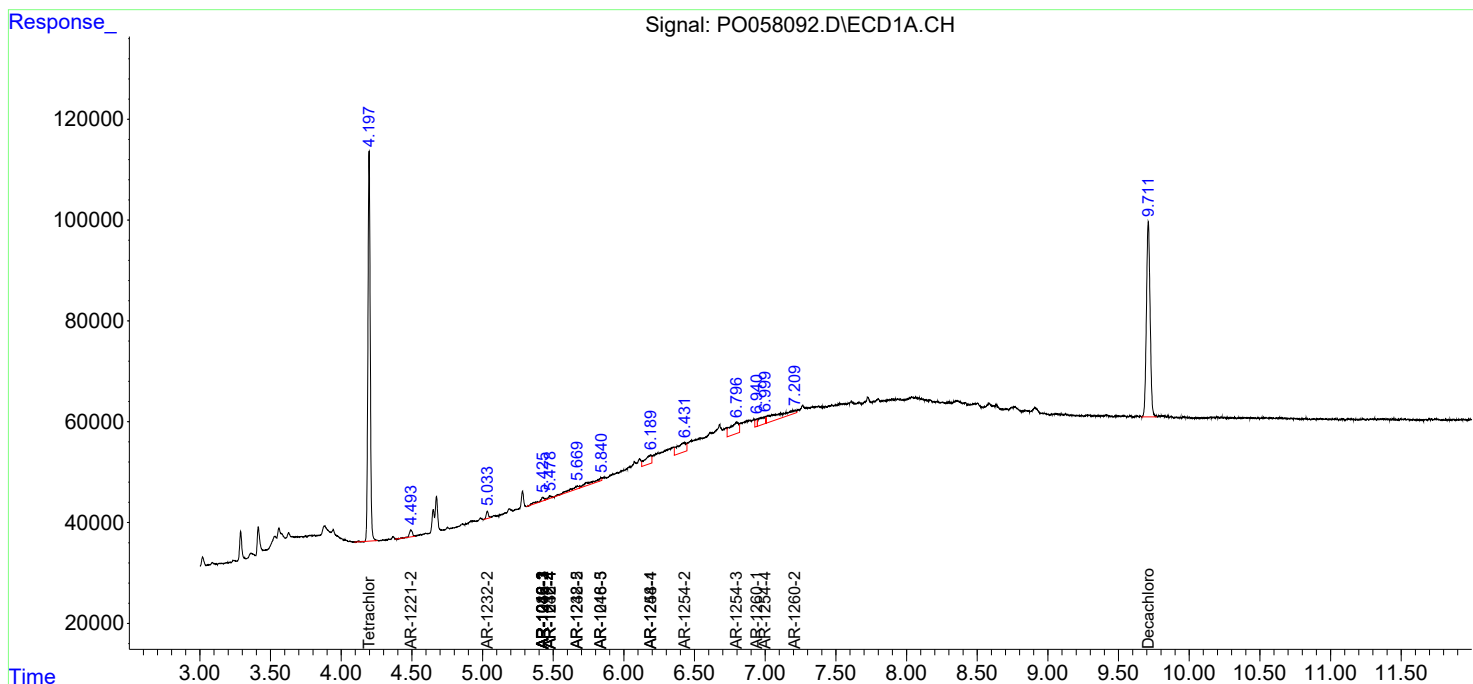
(f)=RT Delta > 1/2 Window (#)=Amounts differ by > 25% (m)=manual int.

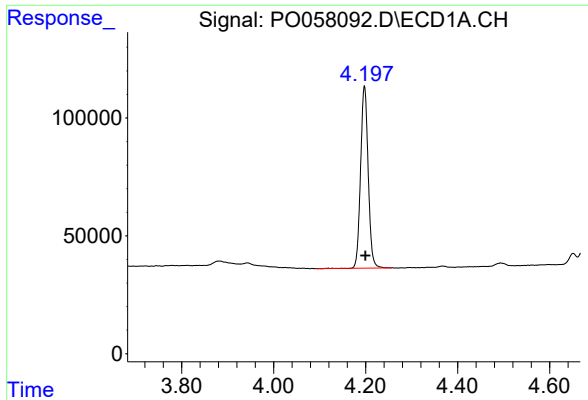
Data Path : Z:\pestpcbsrv\HPCHEM1\ECD\_0\Data\P0071919\  
 Data File : P0058092.D  
 Signal(s) : Signal #1: ECD1A.CH Signal #2: ECD2B.CH  
 Acq On : 18 Jul 2019 12:45  
 Operator : SM/AJ  
 Sample : K3826-03  
 Misc :  
 ALS Vial : 10 Sample Multiplier: 1

Instrument :  
 ECD\_O  
 ClientSampled :  
 RBR-200036

Integration File signal 1: autoint1.e  
 Integration File signal 2: autoint2.e  
 Quant Time: Jul 18 13:02:52 2019  
 Quant Method : Z:\pestpcbsrv\HPCHEM1\ECD\_0\methods\P0071719.M  
 Quant Title : GC EXTRACTABLES  
 QLast Update : Wed Jul 17 11:13:08 2019  
 Response via : Initial Calibration  
 Integrator: ChemStation 6890 Scale Mode: Small noise peaks clipped

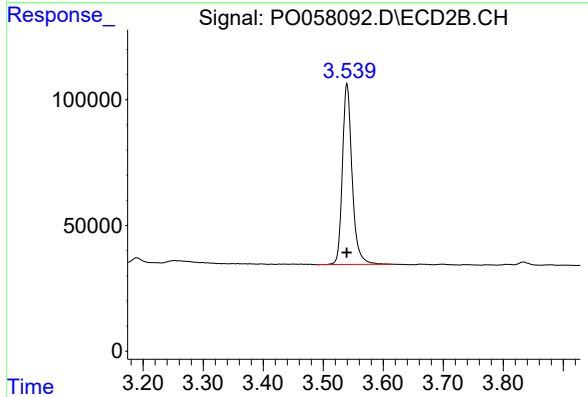
Volume Inj. : 2 µl  
 Signal #1 Phase : ZB-MR1 Signal #2 Phase: ZB-MR2  
 Signal #1 Info : 30Mx0.32mmx 0.50µ Signal #2 Info : 30M x 0.32mm x 0.25µm



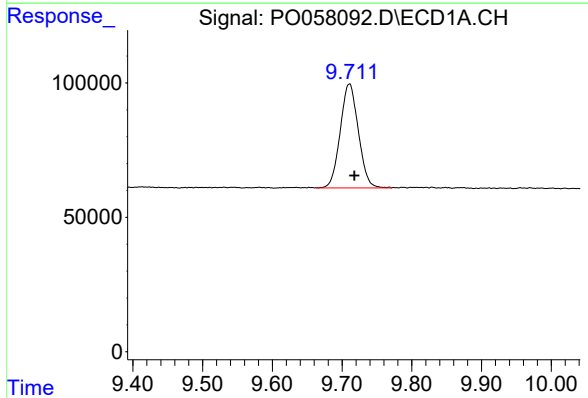


#1 Tetrachloro-m-xylene  
 R.T.: 4.197 min  
 Delta R.T.: -0.003 min  
 Response: 882803  
 Conc: 26.05 ng/ml

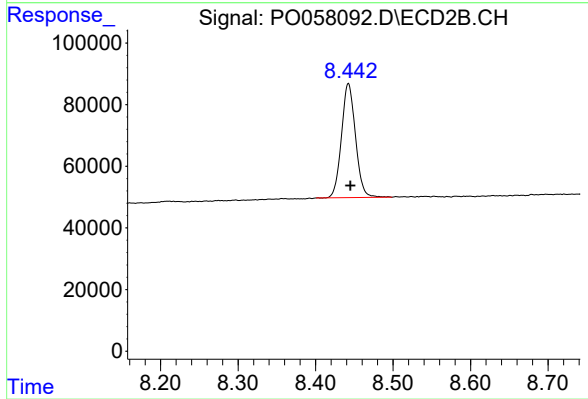
Instrument :  
 ECD\_O  
 ClientSampleId :  
 RBR-200036



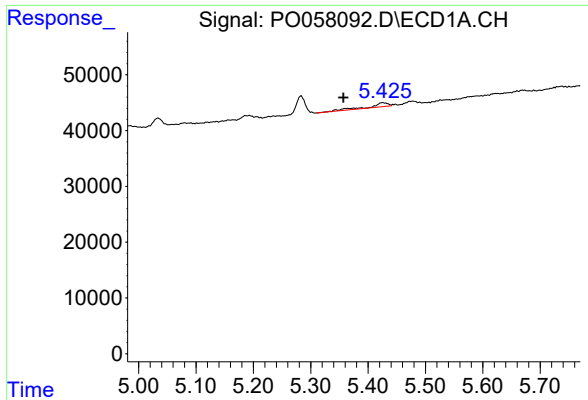
#1 Tetrachloro-m-xylene  
 R.T.: 3.540 min  
 Delta R.T.: 0.000 min  
 Response: 807513  
 Conc: 25.18 ng/ml



#2 Decachlorobiphenyl  
 R.T.: 9.711 min  
 Delta R.T.: -0.007 min  
 Response: 697737  
 Conc: 13.64 ng/ml

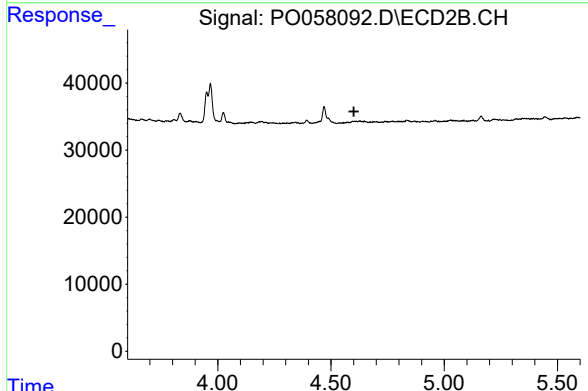


#2 Decachlorobiphenyl  
 R.T.: 8.442 min  
 Delta R.T.: -0.003 min  
 Response: 465297  
 Conc: 13.58 ng/ml

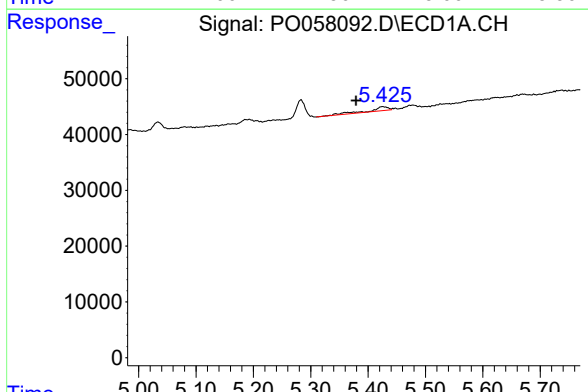


#3 AR-1016-1  
 R.T.: 5.425 min  
 Delta R.T.: 0.068 min  
 Response: 17190  
 Conc: 11.14 ng/ml

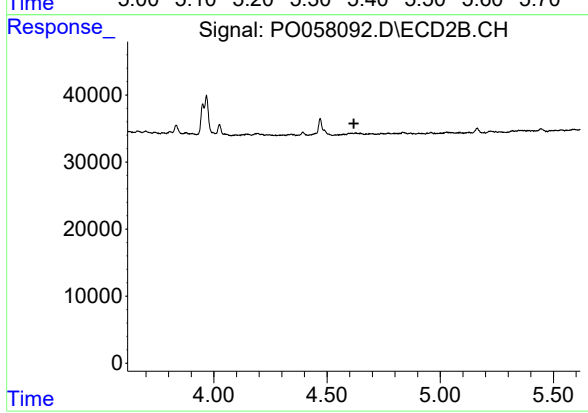
**Instrument :**  
 ECD\_O  
**ClientSampled :**  
 RBR-200036



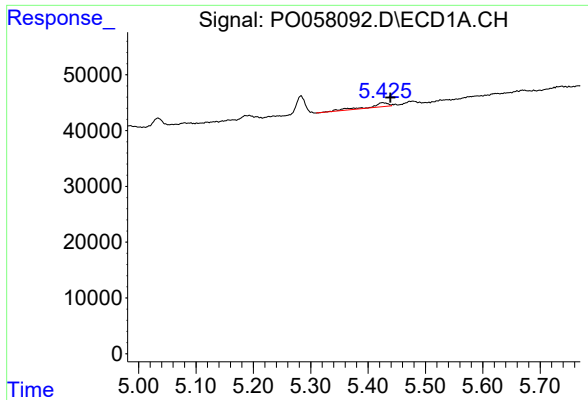
#3 AR-1016-1  
 R.T.: 0.000 min  
 Exp R.T. : 4.601 min  
 Response: 0  
 Conc: N.D.



#4 AR-1016-2  
 R.T.: 5.425 min  
 Delta R.T.: 0.046 min  
 Response: 17190  
 Conc: 7.61 ng/ml

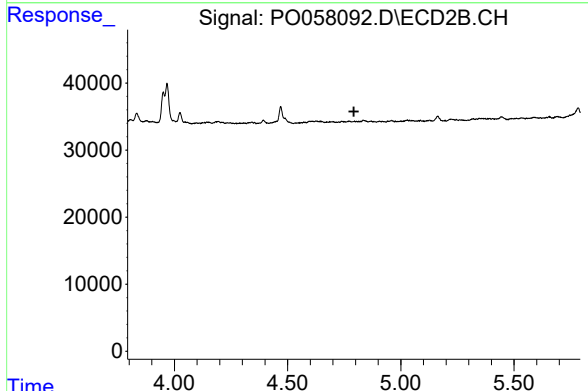


#4 AR-1016-2  
 R.T.: 0.000 min  
 Exp R.T. : 4.619 min  
 Response: 0  
 Conc: N.D.

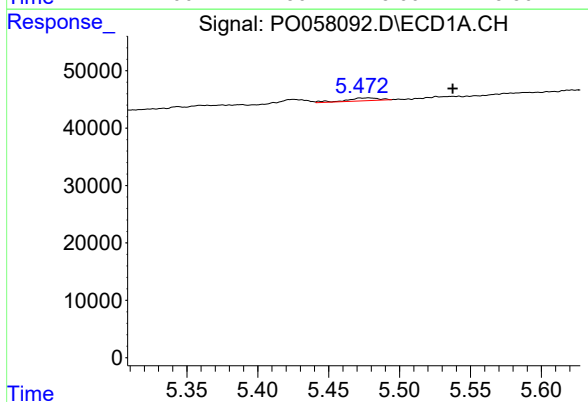


#5 AR-1016-3  
 R.T.: 5.425 min  
 Delta R.T.: -0.014 min  
 Response: 17190  
 Conc: 12.15 ng/ml

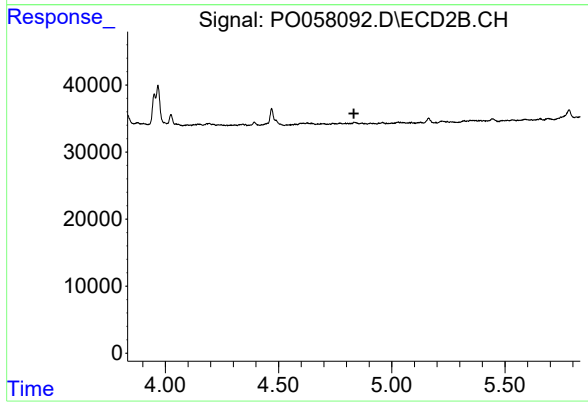
**Instrument :**  
 ECD\_O  
**ClientSampleId :**  
 RBR-200036



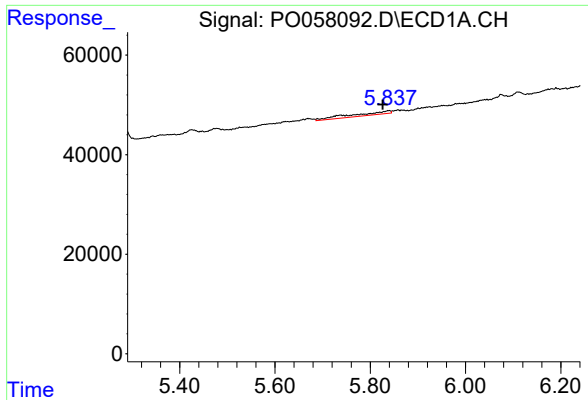
#5 AR-1016-3  
 R.T.: 0.000 min  
 Exp R.T. : 4.793 min  
 Response: 0  
 Conc: N.D.



#6 AR-1016-4  
 R.T.: 5.478 min  
 Delta R.T.: -0.059 min  
 Response: 7889  
 Conc: 6.93 ng/ml

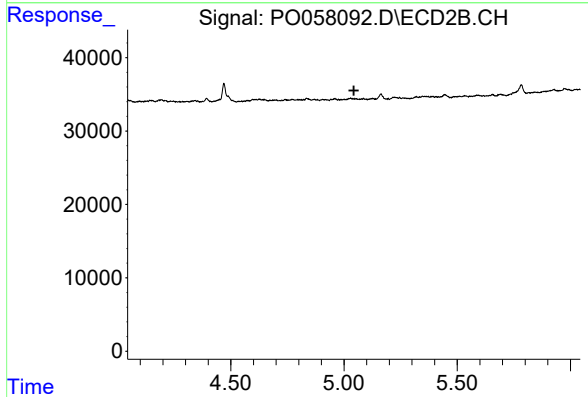


#6 AR-1016-4  
 R.T.: 0.000 min  
 Exp R.T. : 4.833 min  
 Response: 0  
 Conc: N.D.

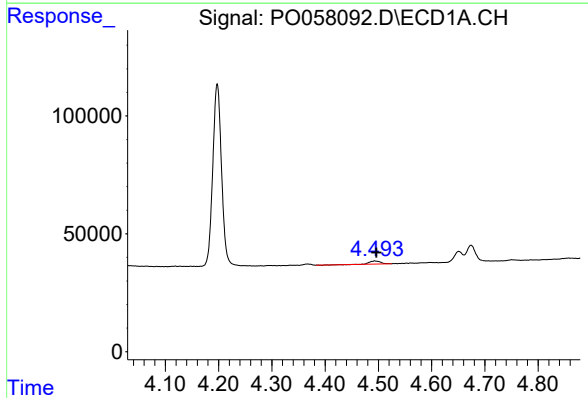


#7 AR-1016-5  
 R.T.: 5.839 min  
 Delta R.T.: 0.013 min  
 Response: 37135  
 Conc: 32.37 ng/ml

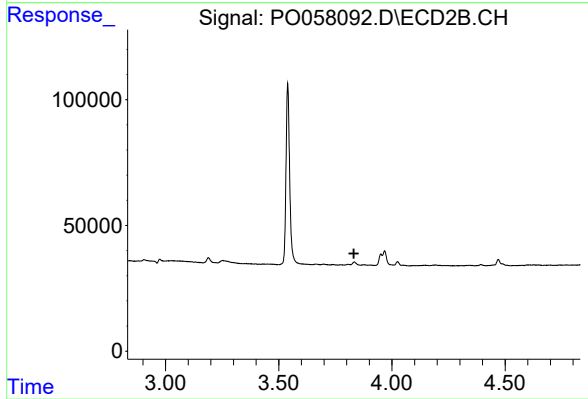
Instrument :  
 ECD\_O  
 ClientSampleId :  
 RBR-200036



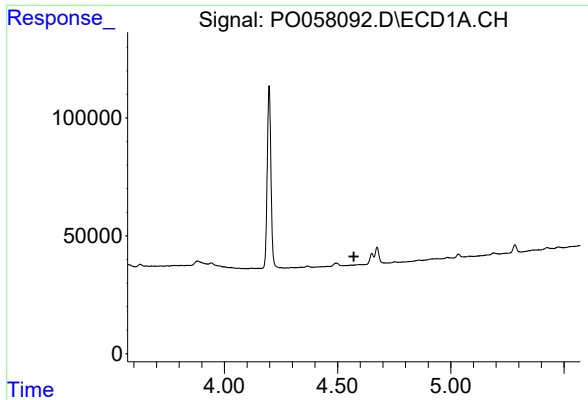
#7 AR-1016-5  
 R.T.: 0.000 min  
 Exp R.T. : 5.043 min  
 Response: 0  
 Conc: N.D.



#9 AR-1221-2  
 R.T.: 4.493 min  
 Delta R.T.: -0.003 min  
 Response: 18788  
 Conc: 60.74 ng/ml



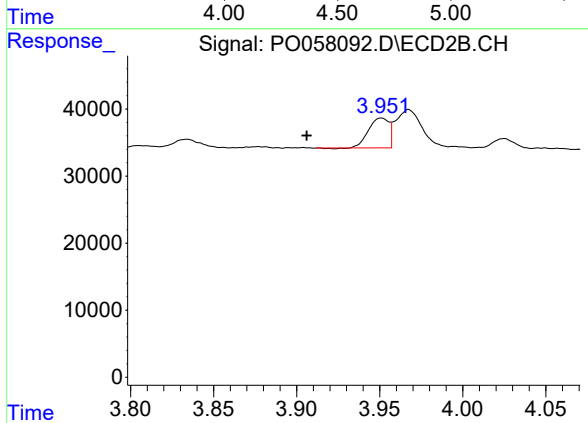
#9 AR-1221-2  
 R.T.: 0.000 min  
 Exp R.T. : 3.832 min  
 Response: 0  
 Conc: N.D.



#10 AR-1221-3

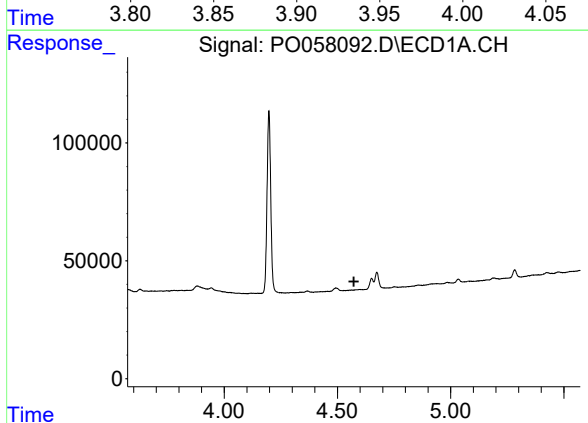
R.T.: 0.000 min  
 Exp R.T. : 4.572 min  
 Response: 0  
 Conc: N.D.

Instrument :  
 ECD\_O  
 ClientSampleId :  
 RBR-200036



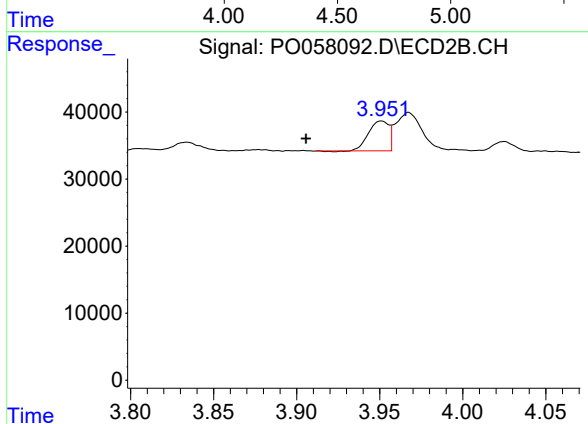
#10 AR-1221-3

R.T.: 3.951 min  
 Delta R.T.: 0.045 min  
 Response: 38017  
 Conc: 44.88 ng/ml



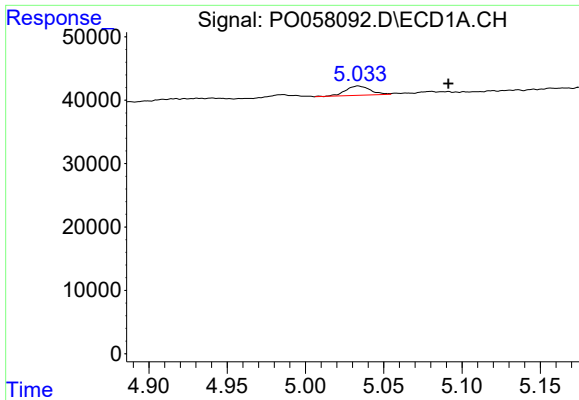
#11 AR-1232-1

R.T.: 0.000 min  
 Exp R.T. : 4.572 min  
 Response: 0  
 Conc: N.D.



#11 AR-1232-1

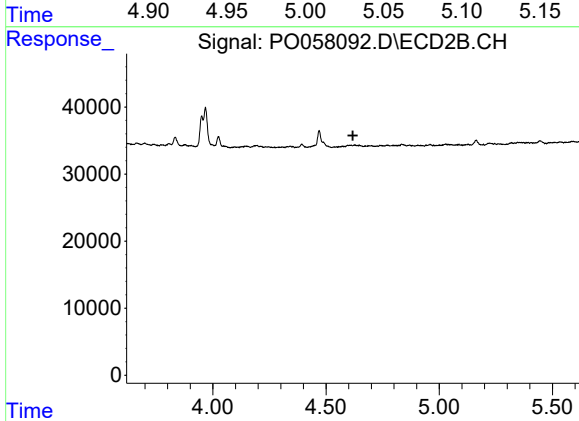
R.T.: 3.951 min  
 Delta R.T.: 0.045 min  
 Response: 38017  
 Conc: 53.93 ng/ml



#12 AR-1232-2

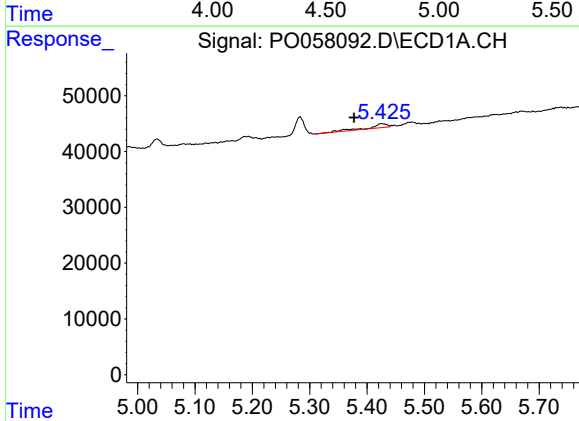
R.T.: 5.034 min  
 Delta R.T.: -0.058 min  
 Response: 15877  
 Conc: 34.33 ng/ml

**Instrument :**  
 ECD\_O  
**ClientSampled :**  
 RBR-200036



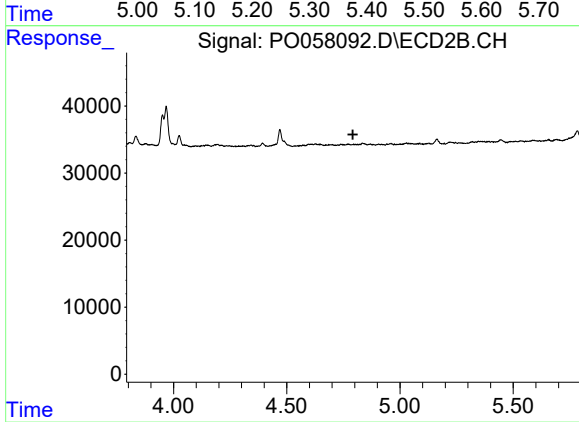
#12 AR-1232-2

R.T.: 0.000 min  
 Exp R.T. : 4.619 min  
 Response: 0  
 Conc: N.D.



#13 AR-1232-3

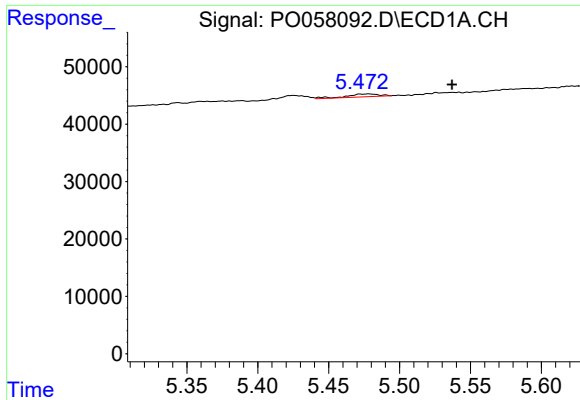
R.T.: 5.425 min  
 Delta R.T.: 0.048 min  
 Response: 17190  
 Conc: 17.26 ng/ml



#13 AR-1232-3

R.T.: 0.000 min  
 Exp R.T. : 4.792 min  
 Response: 0  
 Conc: N.D.

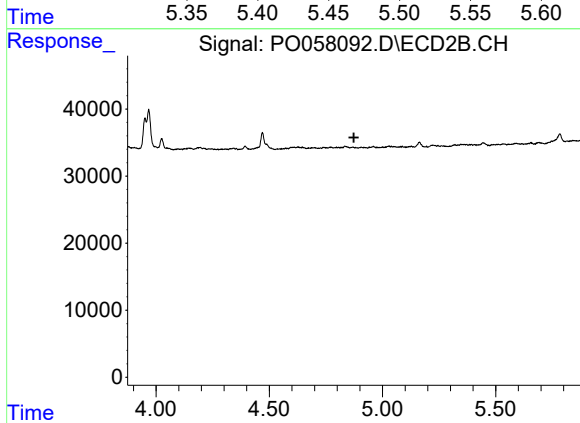




#14 AR-1232-4

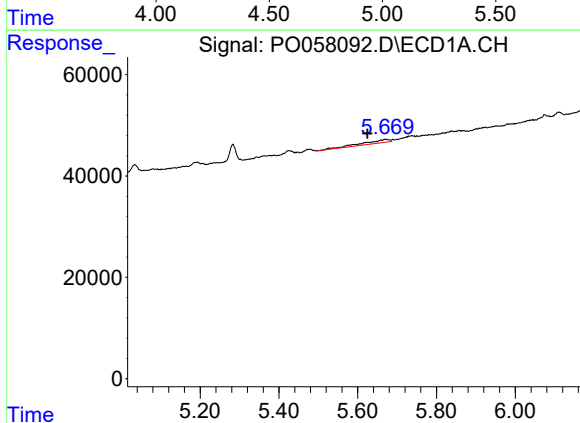
R.T.: 5.478 min  
 Delta R.T.: -0.059 min  
 Response: 7889  
 Conc: 15.82 ng/ml

Instrument :  
 ECD\_O  
 ClientSampleId :  
 RBR-200036



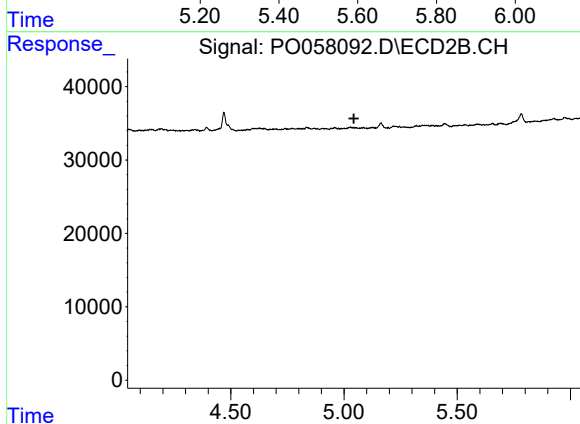
#14 AR-1232-4

R.T.: 0.000 min  
 Exp R.T. : 4.873 min  
 Response: 0  
 Conc: N.D.



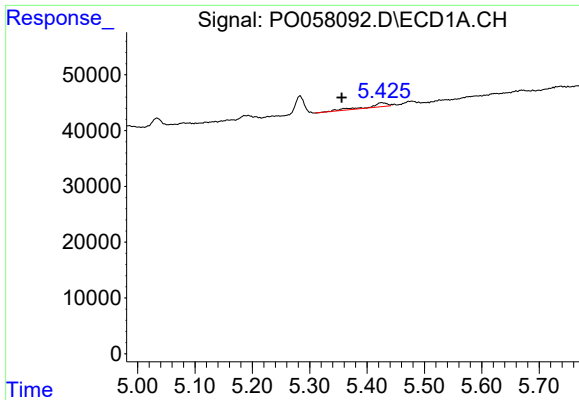
#15 AR-1232-5

R.T.: 5.669 min  
 Delta R.T.: 0.045 min  
 Response: 30275  
 Conc: 80.29 ng/ml



#15 AR-1232-5

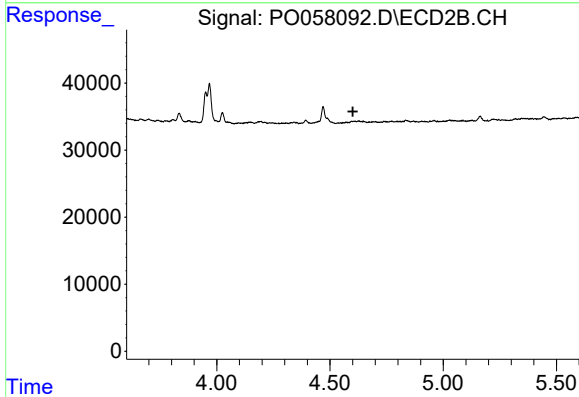
R.T.: 0.000 min  
 Exp R.T. : 5.043 min  
 Response: 0  
 Conc: N.D.



#16 AR-1242-1

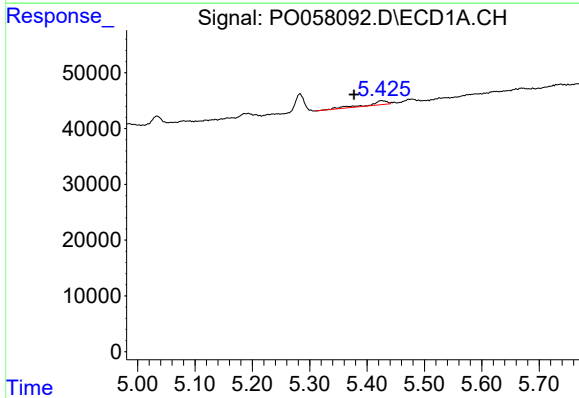
R.T.: 5.425 min  
 Delta R.T.: 0.069 min  
 Response: 17190  
 Conc: 14.04 ng/ml

Instrument :  
 ECD\_O  
 ClientSampleId :  
 RBR-200036



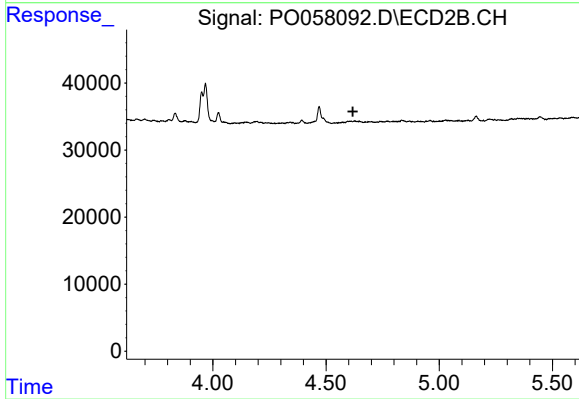
#16 AR-1242-1

R.T.: 0.000 min  
 Exp R.T. : 4.601 min  
 Response: 0  
 Conc: N.D.



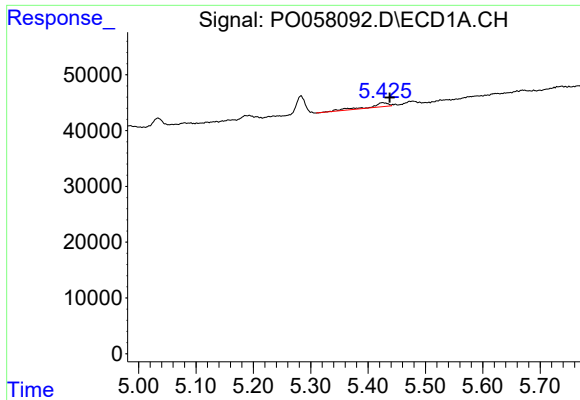
#17 AR-1242-2

R.T.: 5.425 min  
 Delta R.T.: 0.048 min  
 Response: 17190  
 Conc: 9.36 ng/ml



#17 AR-1242-2

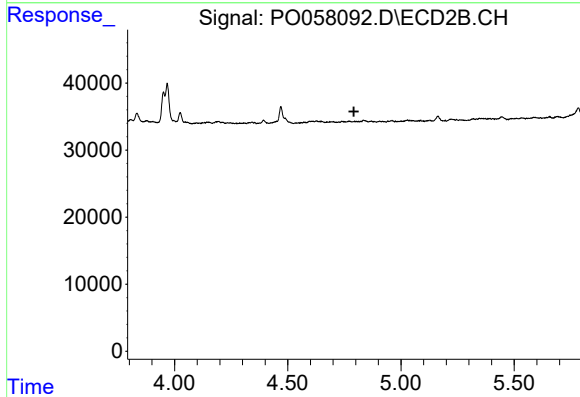
R.T.: 0.000 min  
 Exp R.T. : 4.619 min  
 Response: 0  
 Conc: N.D.



#18 AR-1242-3

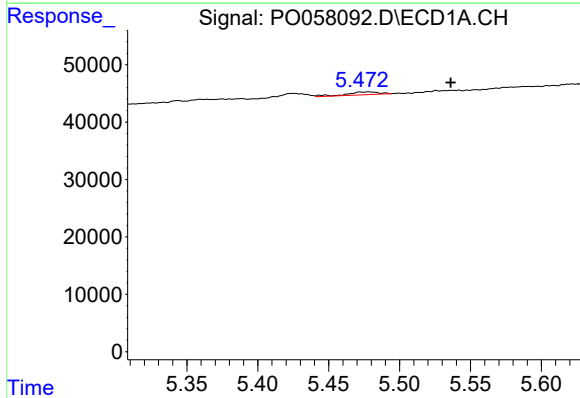
R.T.: 5.425 min  
 Delta R.T.: -0.013 min  
 Response: 17190  
 Conc: 14.80 ng/ml

Instrument :  
 ECD\_O  
 ClientSampleId :  
 RBR-200036



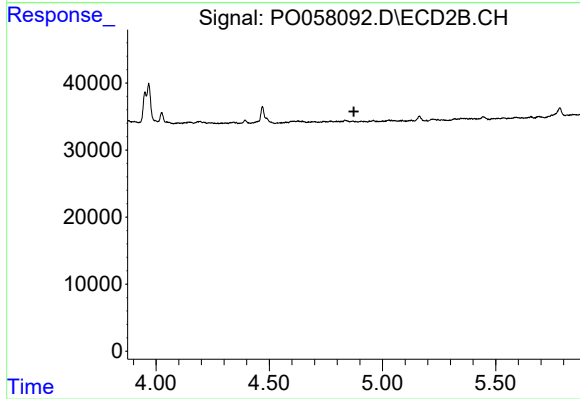
#18 AR-1242-3

R.T.: 0.000 min  
 Exp R.T. : 4.792 min  
 Response: 0  
 Conc: N.D.



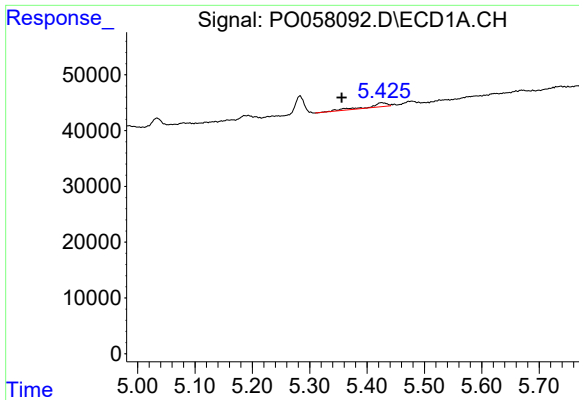
#19 AR-1242-4

R.T.: 5.478 min  
 Delta R.T.: -0.058 min  
 Response: 7889  
 Conc: 8.37 ng/ml



#19 AR-1242-4

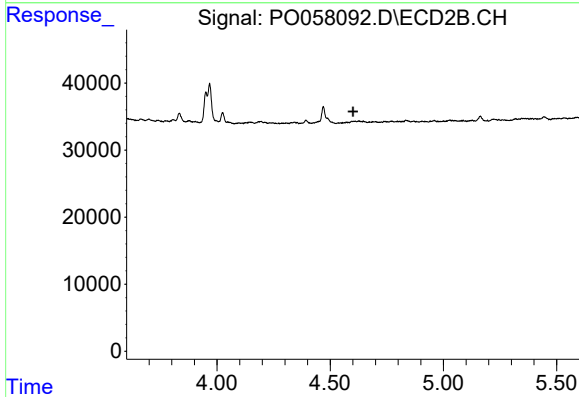
R.T.: 0.000 min  
 Exp R.T. : 4.874 min  
 Response: 0  
 Conc: N.D.



#21 AR-1248-1

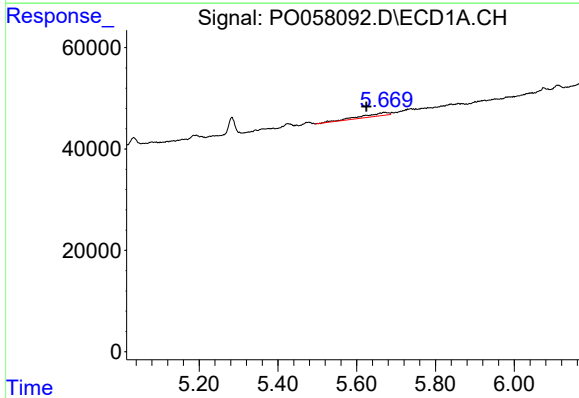
R.T.: 5.425 min  
 Delta R.T.: 0.069 min  
 Response: 17190  
 Conc: 18.39 ng/ml

Instrument :  
 ECD\_O  
 ClientSampleId :  
 RBR-200036



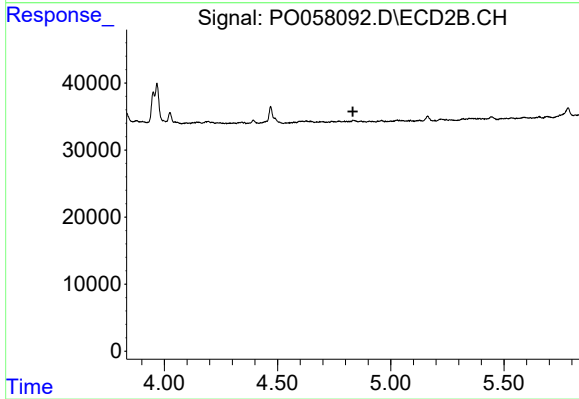
#21 AR-1248-1

R.T.: 0.000 min  
 Exp R.T. : 4.601 min  
 Response: 0  
 Conc: N.D.



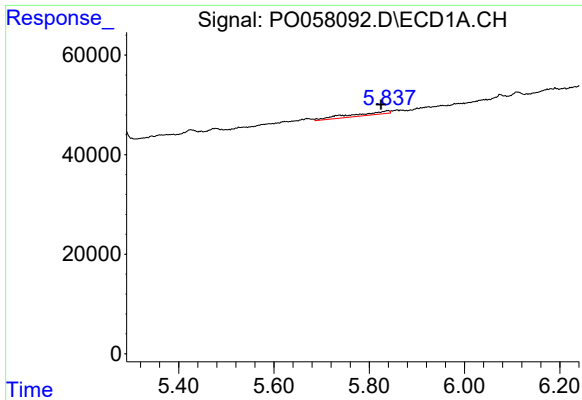
#22 AR-1248-2

R.T.: 5.669 min  
 Delta R.T.: 0.045 min  
 Response: 30275  
 Conc: 22.47 ng/ml



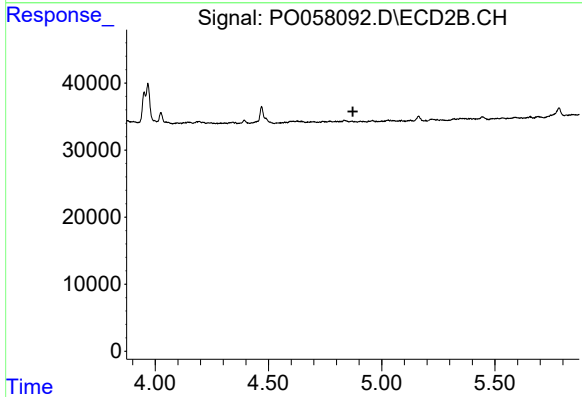
#22 AR-1248-2

R.T.: 0.000 min  
 Exp R.T. : 4.833 min  
 Response: 0  
 Conc: N.D.

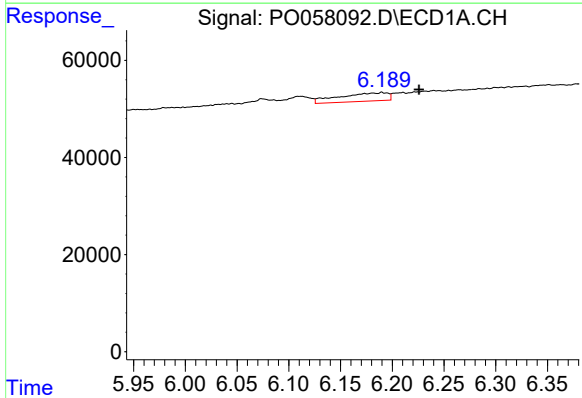


#23 AR-1248-3  
 R.T.: 5.839 min  
 Delta R.T.: 0.014 min  
 Response: 37135  
 Conc: 23.95 ng/ml

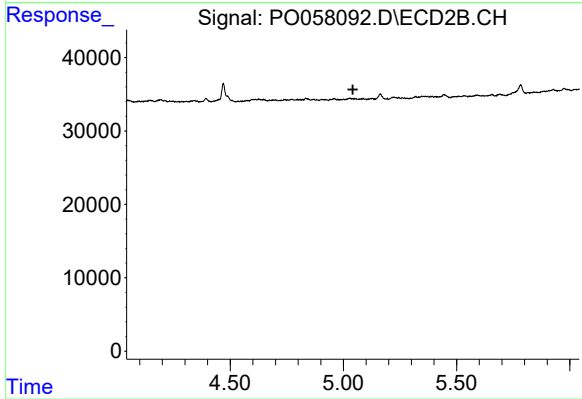
Instrument :  
 ECD\_O  
 ClientSampleId :  
 RBR-200036



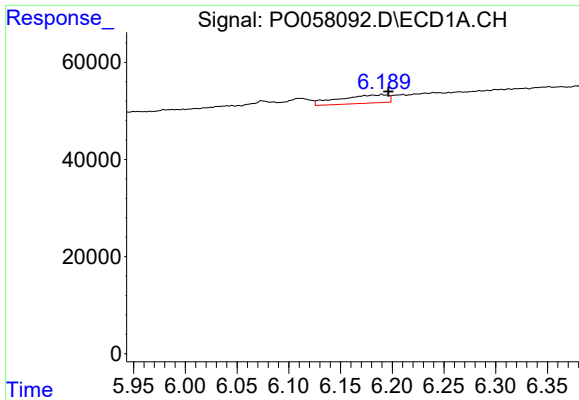
#23 AR-1248-3  
 R.T.: 0.000 min  
 Exp R.T. : 4.873 min  
 Response: 0  
 Conc: N.D.



#24 AR-1248-4  
 R.T.: 6.190 min  
 Delta R.T.: -0.036 min  
 Response: 56847  
 Conc: 29.04 ng/ml



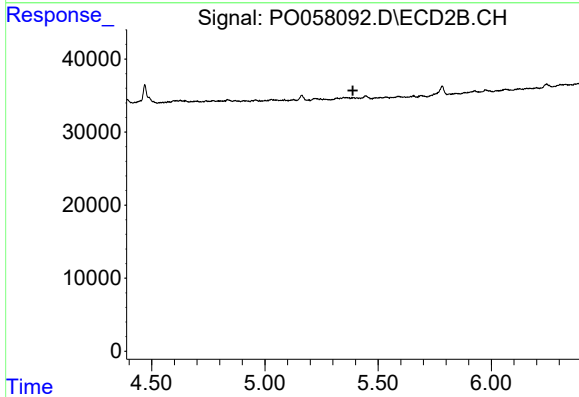
#24 AR-1248-4  
 R.T.: 0.000 min  
 Exp R.T. : 5.042 min  
 Response: 0  
 Conc: N.D.



#26 AR-1254-1

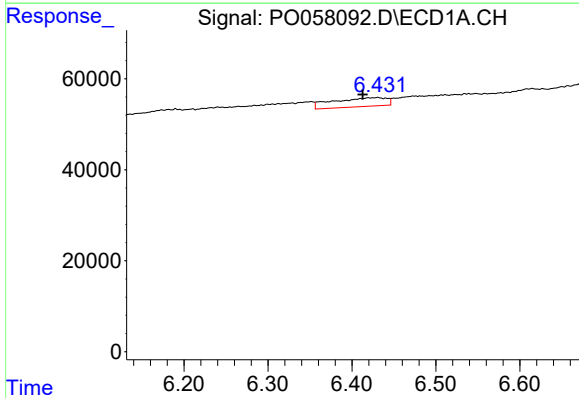
R.T.: 6.190 min  
 Delta R.T.: -0.006 min  
 Response: 56847  
 Conc: 28.93 ng/ml

**Instrument :**  
 ECD\_O  
**ClientSampled :**  
 RBR-200036



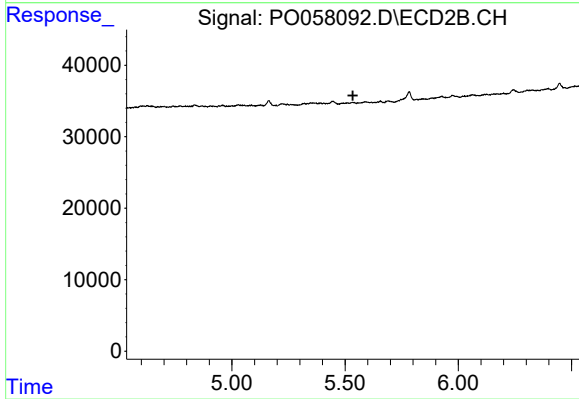
#26 AR-1254-1

R.T.: 0.000 min  
 Exp R.T. : 5.389 min  
 Response: 0  
 Conc: N.D.



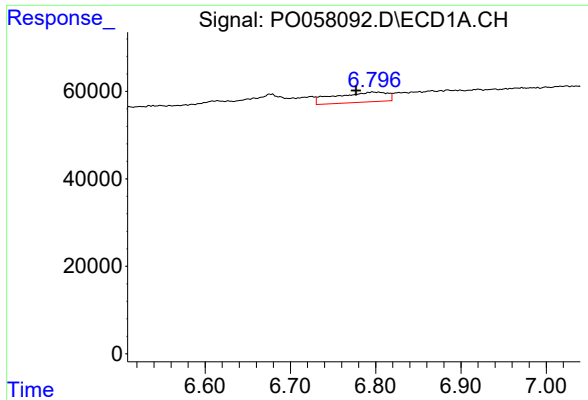
#27 AR-1254-2

R.T.: 6.431 min  
 Delta R.T.: 0.018 min  
 Response: 86253  
 Conc: 26.38 ng/ml



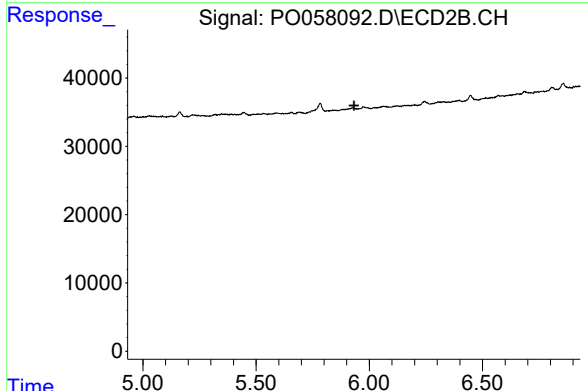
#27 AR-1254-2

R.T.: 0.000 min  
 Exp R.T. : 5.535 min  
 Response: 0  
 Conc: N.D.

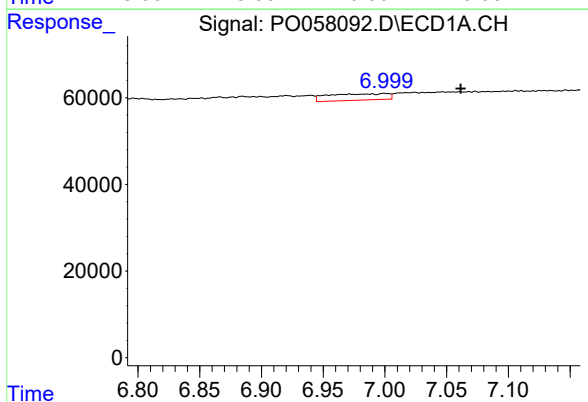


#28 AR-1254-3  
 R.T.: 6.796 min  
 Delta R.T.: 0.019 min  
 Response: 98022  
 Conc: 27.79 ng/ml

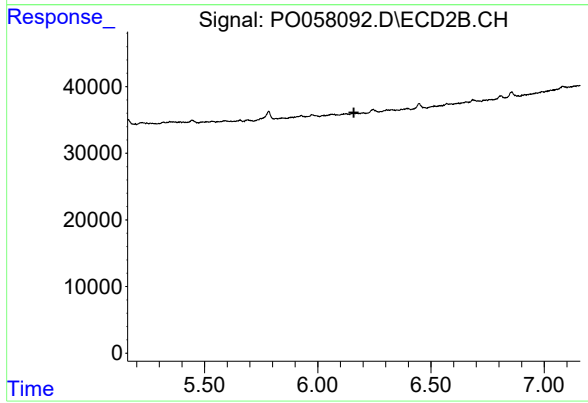
**Instrument :**  
 ECD\_O  
**ClientSampleId :**  
 RBR-200036



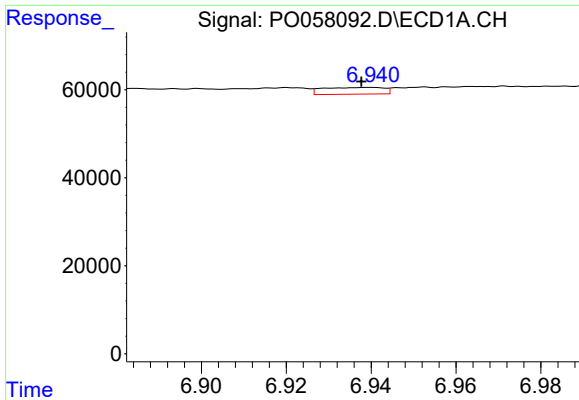
#28 AR-1254-3  
 R.T.: 0.000 min  
 Exp R.T. : 5.932 min  
 Response: 0  
 Conc: N.D.



#29 AR-1254-4  
 R.T.: 7.000 min  
 Delta R.T.: -0.062 min  
 Response: 50031  
 Conc: 16.91 ng/ml



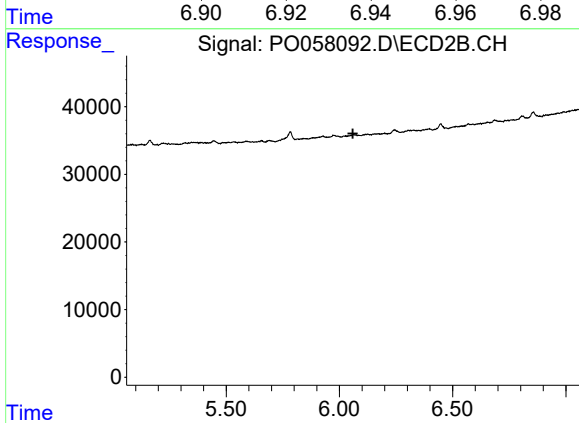
#29 AR-1254-4  
 R.T.: 0.000 min  
 Exp R.T. : 6.159 min  
 Response: 0  
 Conc: N.D.



#31 AR-1260-1

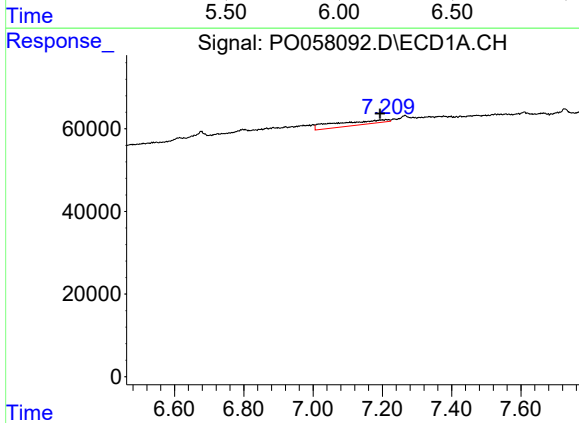
R.T.: 6.940 min  
 Delta R.T.: 0.002 min  
 Response: 15356  
 Conc: 6.14 ng/ml

Instrument :  
 ECD\_O  
 ClientSampleId :  
 RBR-200036



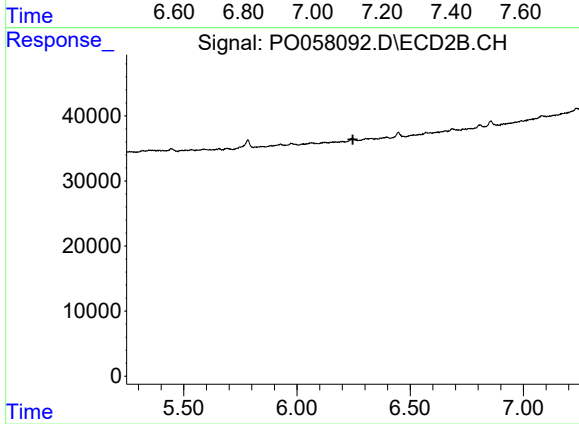
#31 AR-1260-1

R.T.: 0.000 min  
 Exp R.T. : 6.060 min  
 Response: 0  
 Conc: N.D.



#32 AR-1260-2

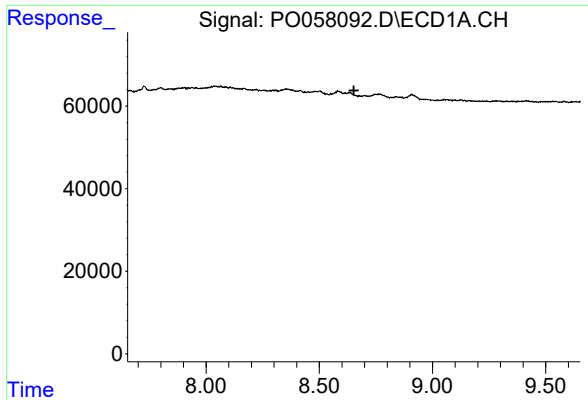
R.T.: 7.210 min  
 Delta R.T.: 0.016 min  
 Response: 110871  
 Conc: 31.53 ng/ml



#32 AR-1260-2

R.T.: 0.000 min  
 Exp R.T. : 6.247 min  
 Response: 0  
 Conc: N.D.

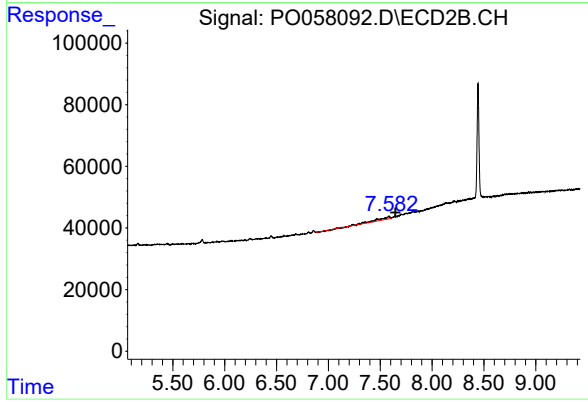




#43 AR-1268-3

R.T.: 0.000 min  
 Exp R.T.: 8.653 min  
 Response: 0  
 Conc: N.D.

**Instrument :**  
 ECD\_O  
**ClientSampled :**  
 RBR-200036



#43 AR-1268-3

R.T.: 7.580 min  
 Delta R.T.: -0.066 min  
 Response: 55483  
 Conc: 9.21 ng/ml