

Data Path : Z:\pestpcbsrv\HPCHEM1\ECD_0\Data\P0071919\
 Data File : P0058103.D
 Signal(s) : Signal #1: ECD1A.CH Signal #2: ECD2B.CH
 Acq On : 18 Jul 2019 17:07
 Operator : SM/AJ
 Sample : K3861-03RE
 Misc :
 ALS Vial : 7 Sample Multiplier: 1

Instrument :
 ECD_0
 ClientSampleId :
 S10-02-SRE

Integration File signal 1: autoint1.e
 Integration File signal 2: autoint2.e
 Quant Time: Jul 19 05:38:14 2019
 Quant Method : Z:\pestpcbsrv\HPCHEM1\ECD_0\methods\P0071719.M
 Quant Title : GC EXTRACTABLES
 QLast Update : Wed Jul 17 11:13:08 2019
 Response via : Initial Calibration
 Integrator: ChemStation 6890 Scale Mode: Small noise peaks clipped

Volume Inj. : 2 µl
 Signal #1 Phase : ZB-MR1 Signal #2 Phase: ZB-MR2
 Signal #1 Info : 30Mx0.32mmx 0.50µ Signal #2 Info : 30M x 0.32mm x 0.25µm

Compound	RT#1	RT#2	Resp#1	Resp#2	ng/ml	ng/ml
System Monitoring Compounds						
1) SA Tetrachlo...	4.197	3.540	1023118	898362	30.192	28.009
2) SA Decachlor...	9.711	8.443	1487806	1040579	29.082	30.359
Target Compounds						
3) L1 AR-1016-1	5.366	4.538	68617	26391	44.463	22.083 #
4) L1 AR-1016-2	5.366	0.000	68617	0	30.379	N.D. #
5) L1 AR-1016-3	5.407	4.795	66727	44699	47.148	47.616
6) L1 AR-1016-4	5.570	4.832	62047	43346	54.479	55.680
7) L1 AR-1016-5	5.825	5.041	140431	42619	122.425	41.572 #
10) L2 AR-1221-3	4.582	3.951	19672	62369	19.805	73.623 #
11) L3 AR-1232-1	4.582	3.951	19672	62369	23.945	88.474 #
12) L3 AR-1232-2	5.059	0.000	52353	0	113.200	N.D. #
13) L3 AR-1232-3	5.366	4.795	68617	44699	68.895	108.613 #
14) L3 AR-1232-4	5.570	4.900	62047	29309	124.427	79.860 #
15) L3 AR-1232-5	5.619	5.041	185924	42619	493.079	102.965 #
16) L4 AR-1242-1	5.366	4.538	68617	26391	56.025	27.693 #
17) L4 AR-1242-2	5.366	0.000	68617	0	37.372	N.D. #
18) L4 AR-1242-3	5.407	4.795	66727	44699	57.467	58.300
19) L4 AR-1242-4	5.503	4.900	254379	29309	269.808	38.616 #
20) L4 AR-1242-5	6.264	5.388	202930	581612	175.243	610.383 #
21) L5 AR-1248-1	5.366	4.538	68617	26391	73.400	35.937 #
22) L5 AR-1248-2	5.619	4.832	185924	43346	137.983	42.538 #
23) L5 AR-1248-3	5.825	4.900	140431	29309	90.586	27.882 #
24) L5 AR-1248-4	6.222	5.041	385342	42619	196.820	33.100 #
25) L5 AR-1248-5	6.264	5.388	202930	581612	106.478	460.067 #
26) L6 AR-1254-1	6.200	5.388	631642	581612	321.415	285.461
27) L6 AR-1254-2	6.413	5.533	1712610	269990	523.887	148.991 #
28) L6 AR-1254-3	6.786	5.948	1712714	1301257	485.492	444.352
29) L6 AR-1254-4	7.058	6.158	779799	434865	263.550	235.363
30) L6 AR-1254-5	7.474	6.569	883096	969071	300.859	356.474
31) L7 AR-1260-1	6.934	6.057	623931	430896	249.460	212.768
32) L7 AR-1260-2	7.190	6.245	1948148	516450	554.102	200.826 #
33) L7 AR-1260-3	7.541	6.395	426939	372464	145.406	163.310
34) L7 AR-1260-4	7.781	6.854	418280	305874	153.118	157.973
35) L7 AR-1260-5	8.075	7.103	242974	168278	41.882	36.562
36) L8 AR-1262-1	7.541	6.596	426939	518529	77.277	130.545 #
37) L8 AR-1262-2	8.075	7.103	242974	168278	28.573	26.052
38) L8 AR-1262-3	8.358	7.379	1023824	784505	181.882	284.616 #
39) L8 AR-1262-4	8.445	7.445	586046	588840	128.449	123.325
40) L8 AR-1262-5	9.046	7.938	158098	128554	56.899	64.635
41) L9 AR-1268-1	8.358	7.379	1023824	784505	99.566	100.488
42) L9 AR-1268-2	8.445	7.445	586046	588840	63.984	82.643 #
43) L9 AR-1268-3	8.648	7.644	1066584	855029	133.551	141.947

Data Path : Z:\pestpcbsrv\HPCHEM1\ECD_0\Data\P0071919\
 Data File : P0058103.D
 Signal(s) : Signal #1: ECD1A.CH Signal #2: ECD2B.CH
 Acq On : 18 Jul 2019 17:07
 Operator : SM/AJ
 Sample : K3861-03RE
 Misc :
 ALS Vial : 7 Sample Multiplier: 1

Instrument :
 ECD_0
 ClientSampleId :
 S10-02-SRE

Integration File signal 1: autoint1.e
 Integration File signal 2: autoint2.e
 Quant Time: Jul 19 05:38:14 2019
 Quant Method : Z:\pestpcbsrv\HPCHEM1\ECD_0\methods\P0071719.M
 Quant Title : GC EXTRACTABLES
 QLast Update : Wed Jul 17 11:13:08 2019
 Response via : Initial Calibration
 Integrator: ChemStation 6890 Scale Mode: Small noise peaks clipped

Volume Inj. : 2 µl
 Signal #1 Phase : ZB-MR1 Signal #2 Phase: ZB-MR2
 Signal #1 Info : 30Mx0.32mmx 0.50µ Signal #2 Info : 30M x 0.32mm x 0.25µm

	Compound	RT#1	RT#2	Resp#1	Resp#2	ng/ml	ng/ml
44)	L9 AR-1268-4	9.046	7.938	158098	128554	53.353	61.456
45)	L9 AR-1268-5	9.415	8.210	2559192	1848350	117.485	110.838

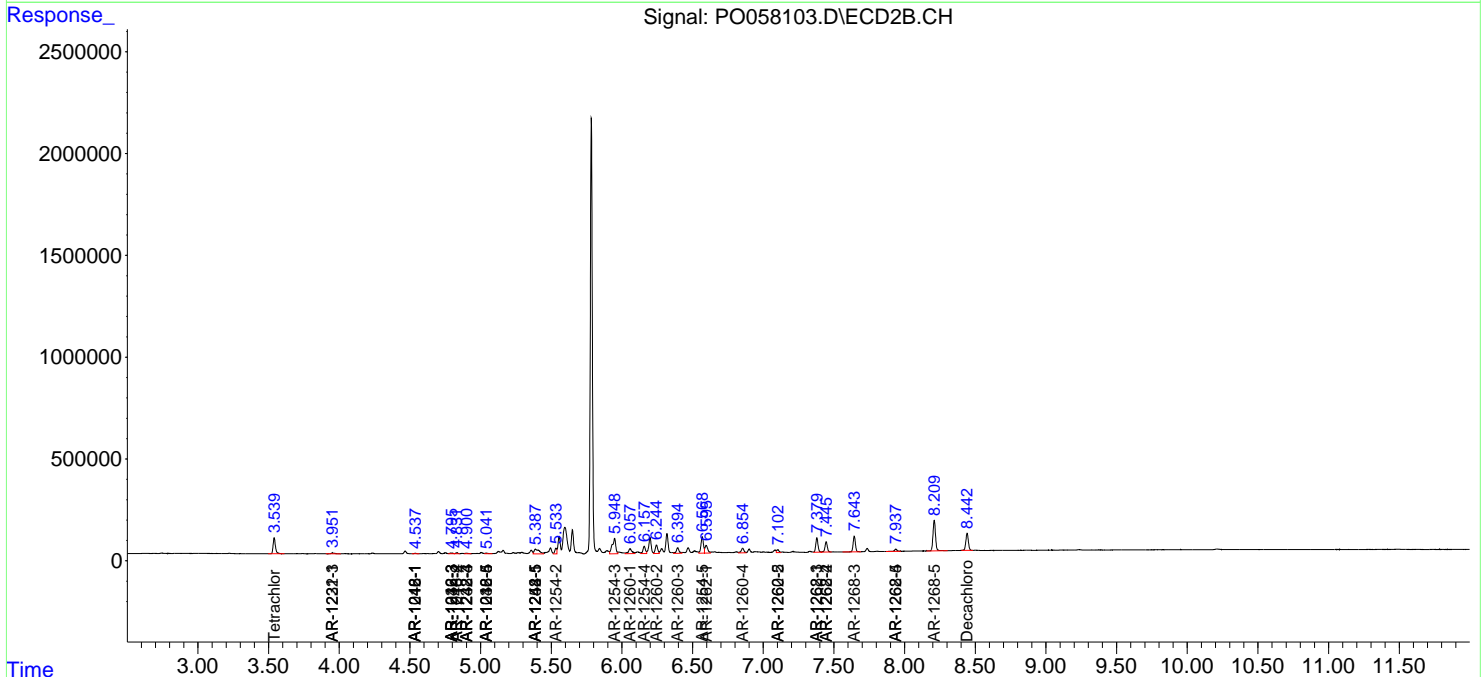
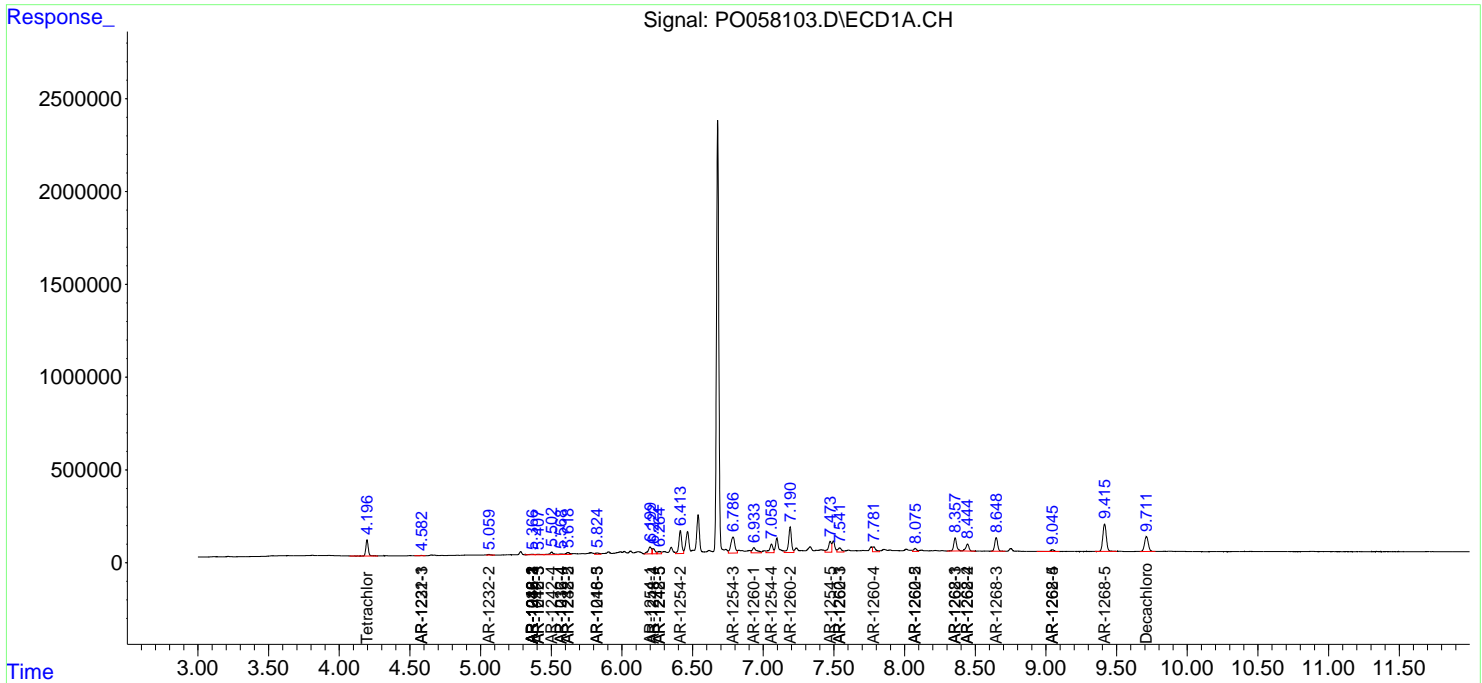
(f)=RT Delta > 1/2 Window (#)=Amounts differ by > 25% (m)=manual int.

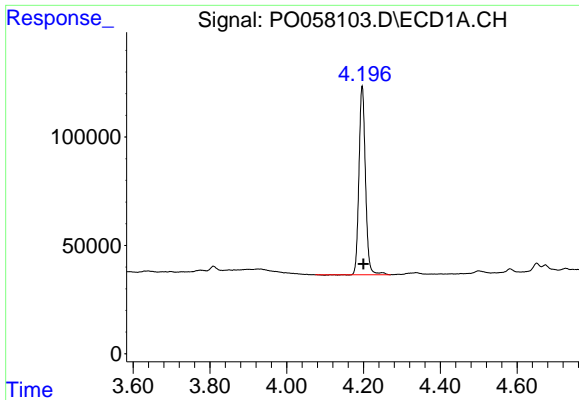
Data Path : Z:\pestpcbsrv\HPCHEM1\ECD_O\Data\P0071919\
 Data File : P0058103.D
 Signal(s) : Signal #1: ECD1A.CH Signal #2: ECD2B.CH
 Acq On : 18 Jul 2019 17:07
 Operator : SM/AJ
 Sample : K3861-03RE
 Misc :
 ALS Vial : 7 Sample Multiplier: 1

Instrument :
 ECD_O
 ClientSampled :
 S10-02-SRE

Integration File signal 1: autoint1.e
 Integration File signal 2: autoint2.e
 Quant Time: Jul 19 05:38:14 2019
 Quant Method : Z:\pestpcbsrv\HPCHEM1\ECD_O\methods\P0071719.M
 Quant Title : GC EXTRACTABLES
 QLast Update : Wed Jul 17 11:13:08 2019
 Response via : Initial Calibration
 Integrator: ChemStation 6890 Scale Mode: Small noise peaks clipped

Volume Inj. : 2 µl
 Signal #1 Phase : ZB-MR1 Signal #2 Phase: ZB-MR2
 Signal #1 Info : 30Mx0.32mmx 0.50µ Signal #2 Info : 30M x 0.32mm x 0.25µm

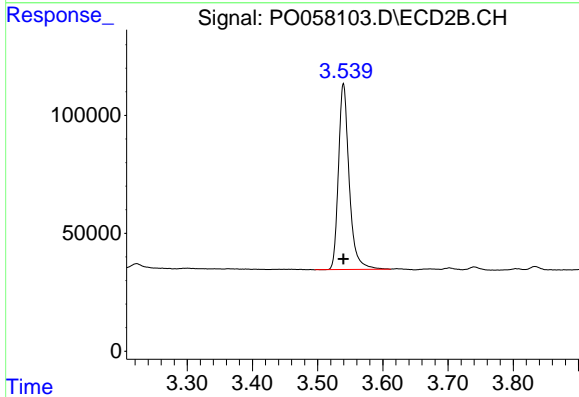




#1 Tetrachloro-m-xylene

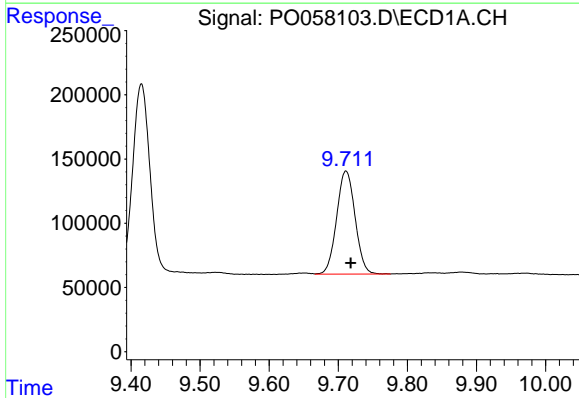
R.T.: 4.197 min
 Delta R.T.: -0.003 min
 Response: 1023118
 Conc: 30.19 ng/ml

Instrument :
 ECD_O
 ClientSampleId :
 S10-02-SRE



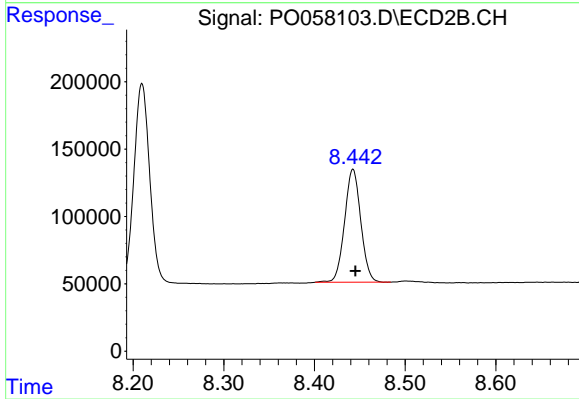
#1 Tetrachloro-m-xylene

R.T.: 3.540 min
 Delta R.T.: 0.000 min
 Response: 898362
 Conc: 28.01 ng/ml



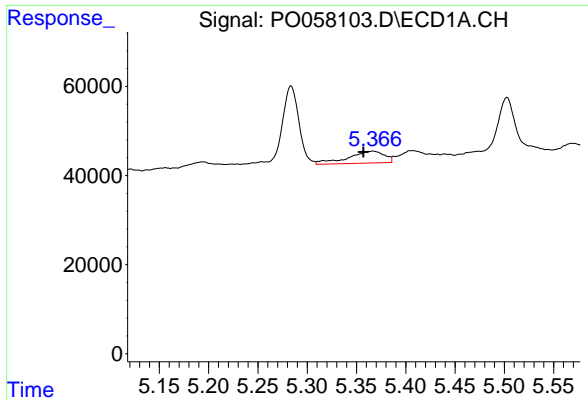
#2 Decachlorobiphenyl

R.T.: 9.711 min
 Delta R.T.: -0.007 min
 Response: 1487806
 Conc: 29.08 ng/ml



#2 Decachlorobiphenyl

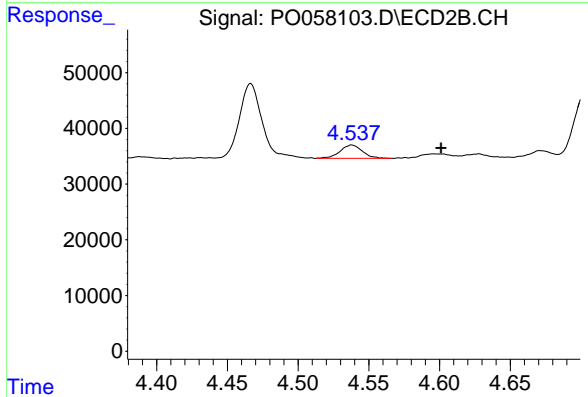
R.T.: 8.443 min
 Delta R.T.: -0.003 min
 Response: 1040579
 Conc: 30.36 ng/ml



#3 AR-1016-1

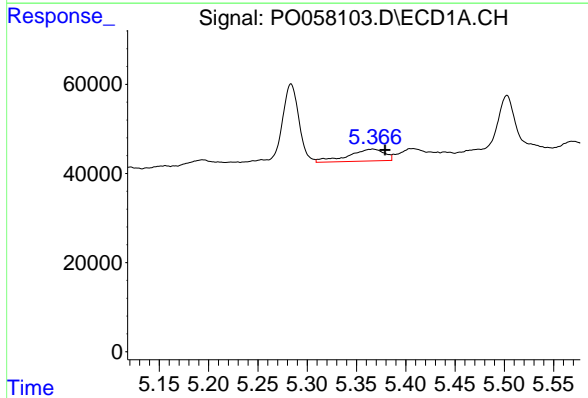
R.T.: 5.366 min
 Delta R.T.: 0.009 min
 Response: 68617
 Conc: 44.46 ng/ml

Instrument :
 ECD_O
 ClientSampleId :
 S10-02-SRE



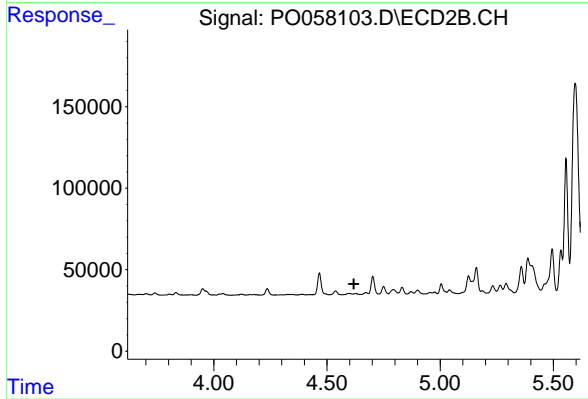
#3 AR-1016-1

R.T.: 4.538 min
 Delta R.T.: -0.063 min
 Response: 26391
 Conc: 22.08 ng/ml



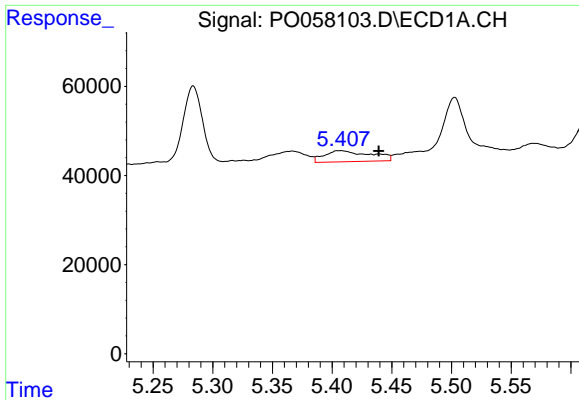
#4 AR-1016-2

R.T.: 5.366 min
 Delta R.T.: -0.013 min
 Response: 68617
 Conc: 30.38 ng/ml



#4 AR-1016-2

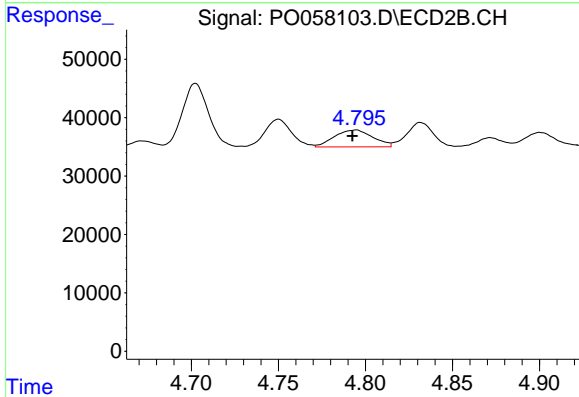
R.T.: 0.000 min
 Exp R.T. : 4.619 min
 Response: 0
 Conc: N.D.



#5 AR-1016-3

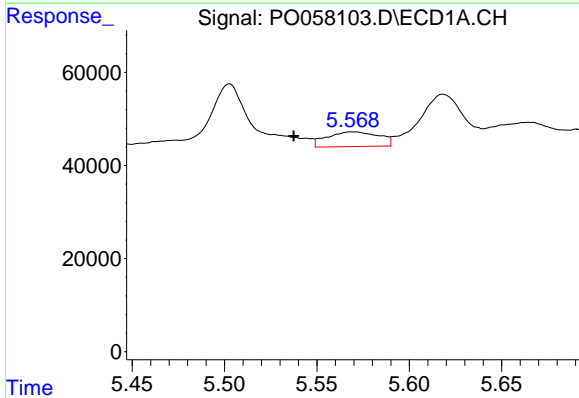
R.T.: 5.407 min
 Delta R.T.: -0.032 min
 Response: 66727
 Conc: 47.15 ng/ml

Instrument :
 ECD_O
 ClientSampleId :
 S10-02-SRE



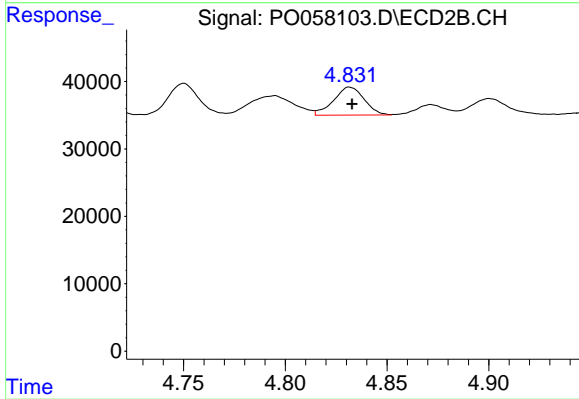
#5 AR-1016-3

R.T.: 4.795 min
 Delta R.T.: 0.002 min
 Response: 44699
 Conc: 47.62 ng/ml



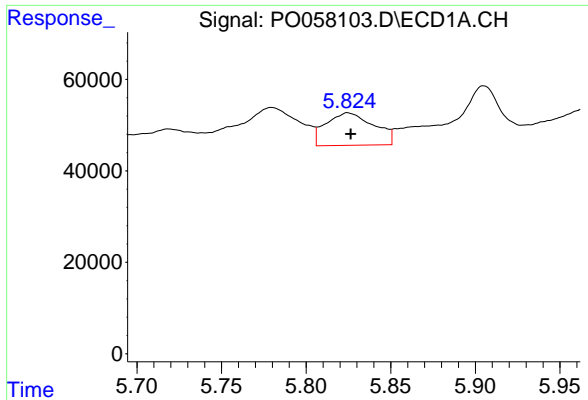
#6 AR-1016-4

R.T.: 5.570 min
 Delta R.T.: 0.032 min
 Response: 62047
 Conc: 54.48 ng/ml



#6 AR-1016-4

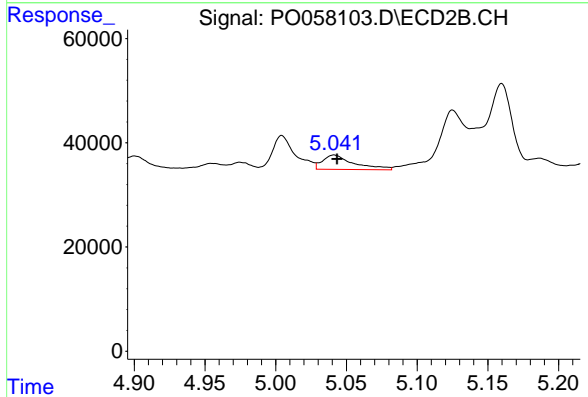
R.T.: 4.832 min
 Delta R.T.: 0.000 min
 Response: 43346
 Conc: 55.68 ng/ml



#7 AR-1016-5

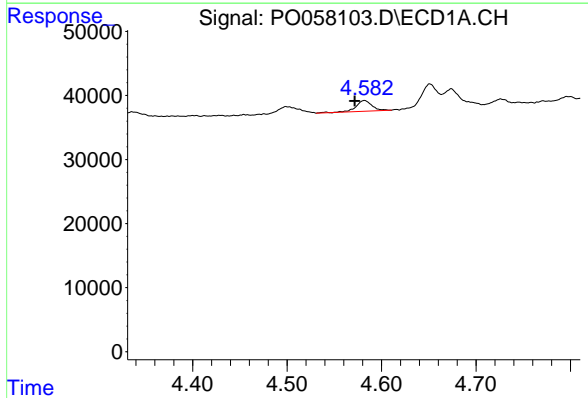
R.T.: 5.825 min
 Delta R.T.: -0.001 min
 Response: 140431
 Conc: 122.43 ng/ml

Instrument :
 ECD_O
 ClientSampleId :
 S10-02-SRE



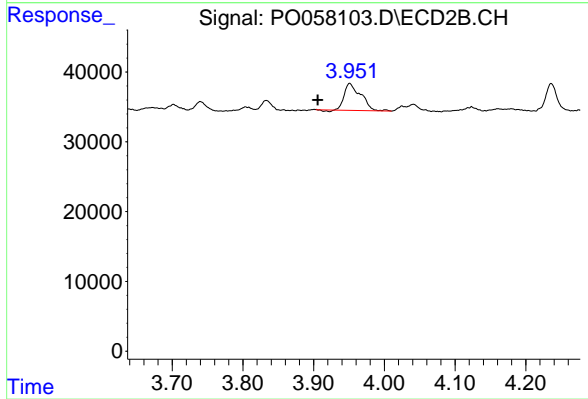
#7 AR-1016-5

R.T.: 5.041 min
 Delta R.T.: -0.002 min
 Response: 42619
 Conc: 41.57 ng/ml



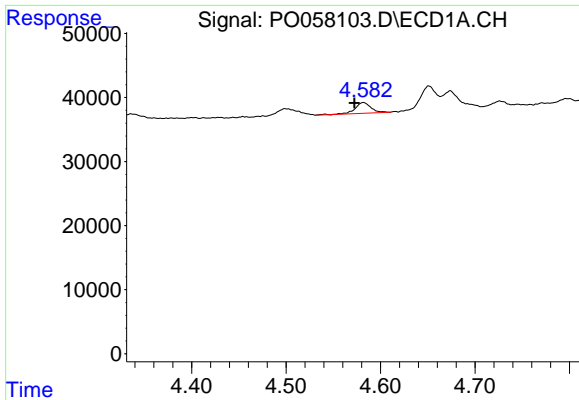
#10 AR-1221-3

R.T.: 4.582 min
 Delta R.T.: 0.010 min
 Response: 19672
 Conc: 19.81 ng/ml



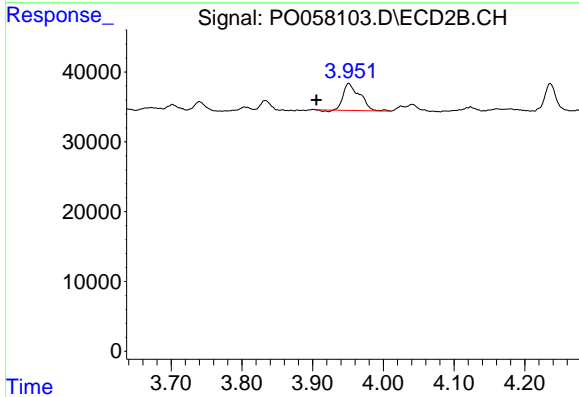
#10 AR-1221-3

R.T.: 3.951 min
 Delta R.T.: 0.045 min
 Response: 62369
 Conc: 73.62 ng/ml

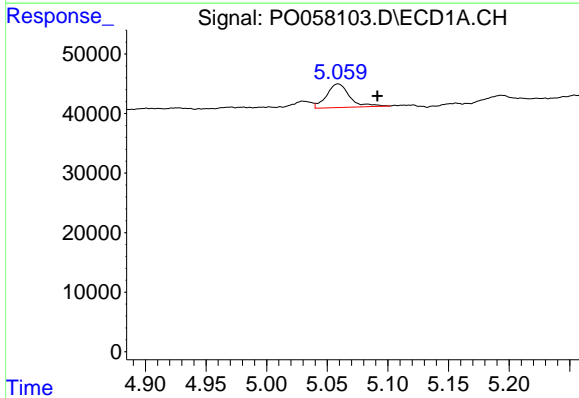


#11 AR-1232-1
 R.T.: 4.582 min
 Delta R.T.: 0.010 min
 Response: 19672
 Conc: 23.94 ng/ml

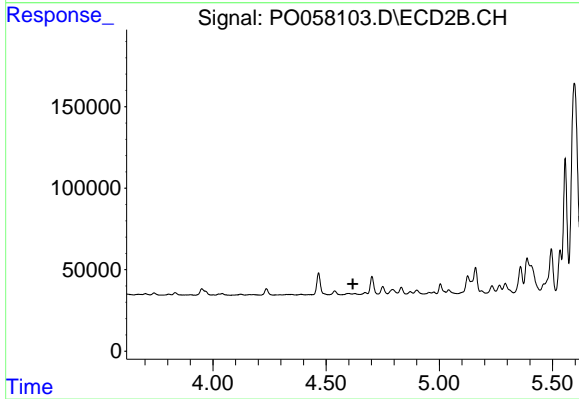
Instrument :
 ECD_O
ClientSampled :
 S10-02-SRE



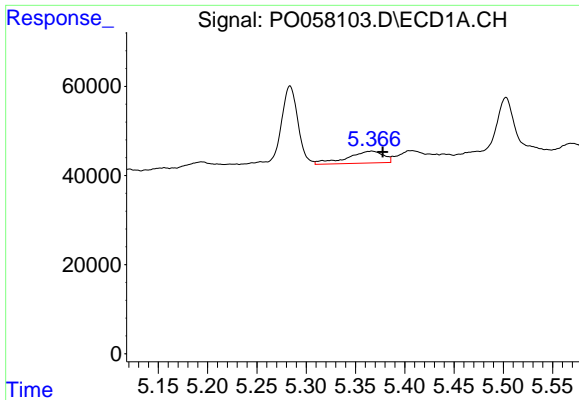
#11 AR-1232-1
 R.T.: 3.951 min
 Delta R.T.: 0.045 min
 Response: 62369
 Conc: 88.47 ng/ml



#12 AR-1232-2
 R.T.: 5.059 min
 Delta R.T.: -0.032 min
 Response: 52353
 Conc: 113.20 ng/ml



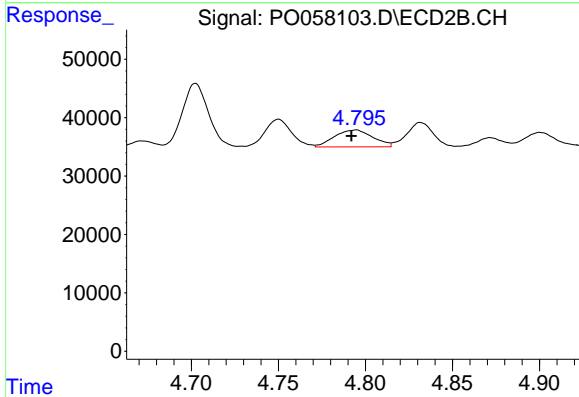
#12 AR-1232-2
 R.T.: 0.000 min
 Exp R.T. : 4.619 min
 Response: 0
 Conc: N.D.



#13 AR-1232-3

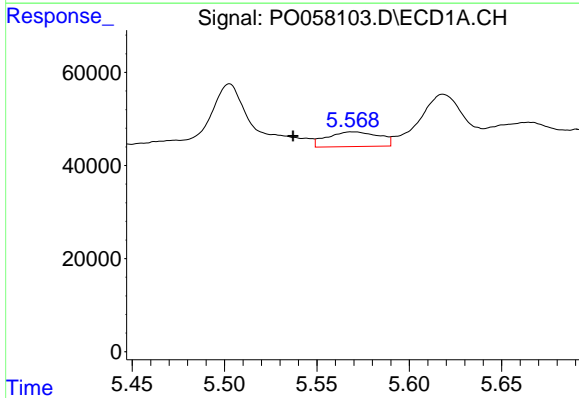
R.T.: 5.366 min
 Delta R.T.: -0.011 min
 Response: 68617
 Conc: 68.89 ng/ml

Instrument :
 ECD_O
 ClientSampleId :
 S10-02-SRE



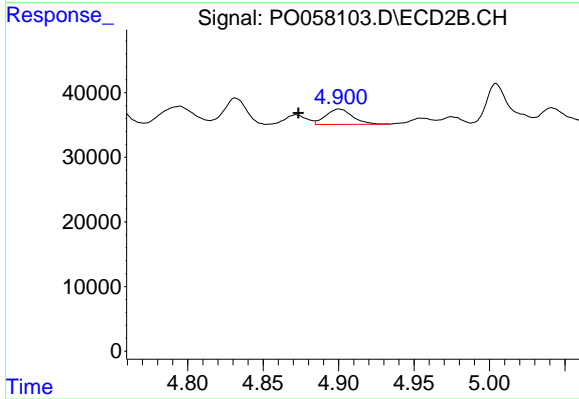
#13 AR-1232-3

R.T.: 4.795 min
 Delta R.T.: 0.003 min
 Response: 44699
 Conc: 108.61 ng/ml



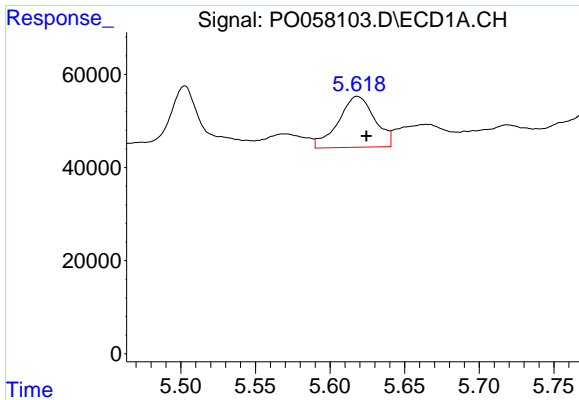
#14 AR-1232-4

R.T.: 5.570 min
 Delta R.T.: 0.033 min
 Response: 62047
 Conc: 124.43 ng/ml



#14 AR-1232-4

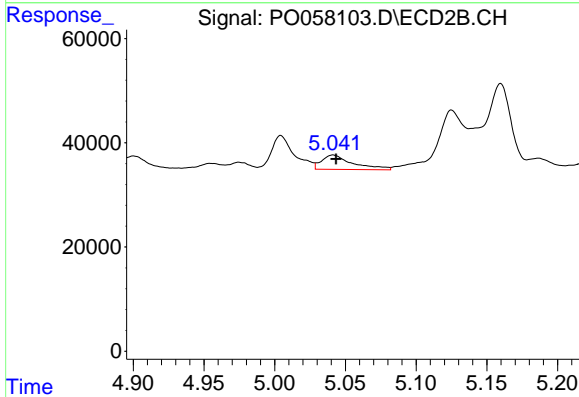
R.T.: 4.900 min
 Delta R.T.: 0.027 min
 Response: 29309
 Conc: 79.86 ng/ml



#15 AR-1232-5

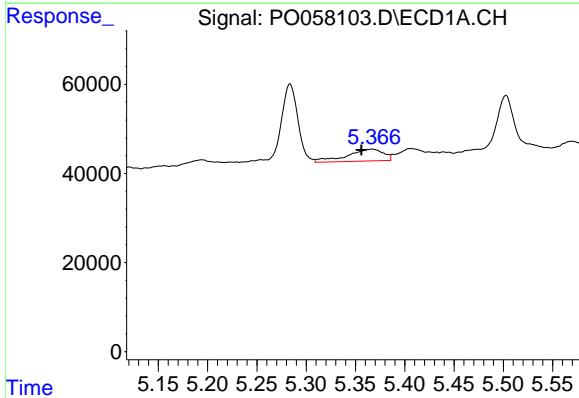
R.T.: 5.619 min
 Delta R.T.: -0.006 min
 Response: 185924
 Conc: 493.08 ng/ml

Instrument :
 ECD_O
 ClientSampleId :
 S10-02-SRE



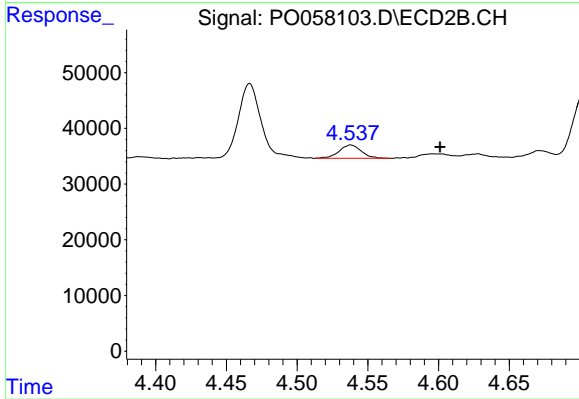
#15 AR-1232-5

R.T.: 5.041 min
 Delta R.T.: -0.002 min
 Response: 42619
 Conc: 102.97 ng/ml



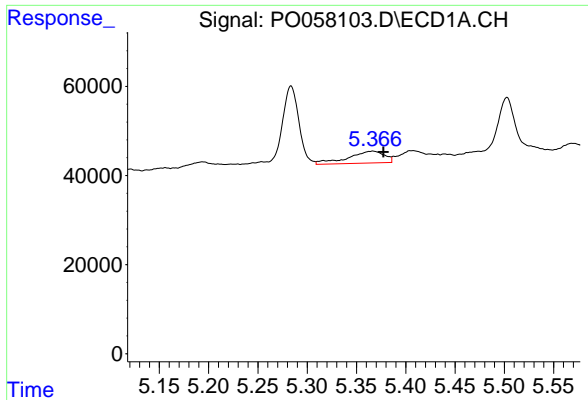
#16 AR-1242-1

R.T.: 5.366 min
 Delta R.T.: 0.010 min
 Response: 68617
 Conc: 56.02 ng/ml



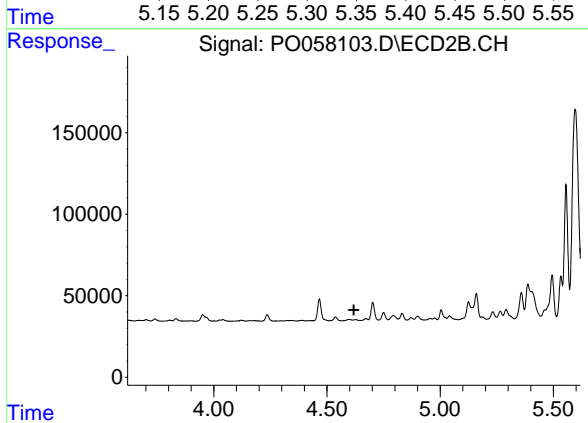
#16 AR-1242-1

R.T.: 4.538 min
 Delta R.T.: -0.063 min
 Response: 26391
 Conc: 27.69 ng/ml

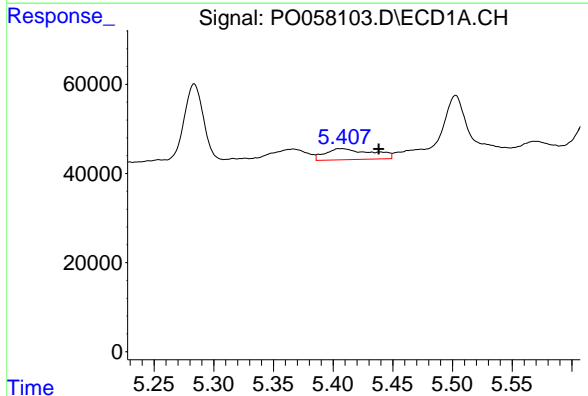


#17 AR-1242-2
 R.T.: 5.366 min
 Delta R.T.: -0.011 min
 Response: 68617
 Conc: 37.37 ng/ml

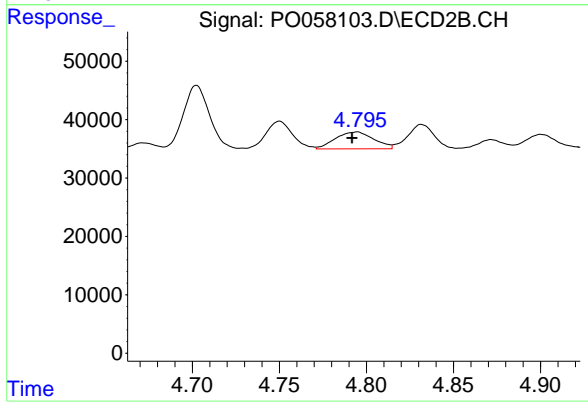
Instrument :
 ECD_O
 ClientSampled :
 S10-02-SRE



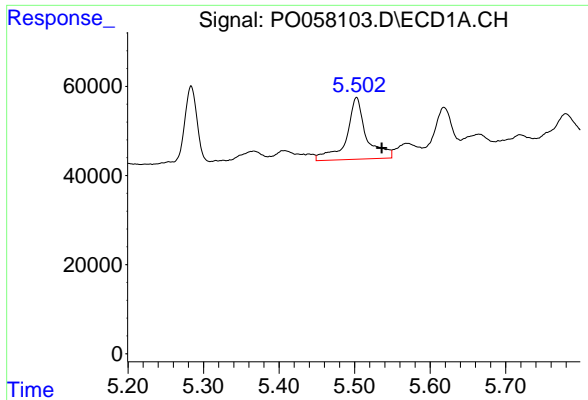
#17 AR-1242-2
 R.T.: 0.000 min
 Exp R.T. : 4.619 min
 Response: 0
 Conc: N.D.



#18 AR-1242-3
 R.T.: 5.407 min
 Delta R.T.: -0.031 min
 Response: 66727
 Conc: 57.47 ng/ml

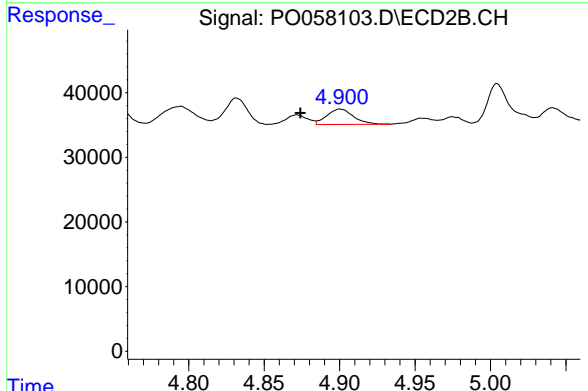


#18 AR-1242-3
 R.T.: 4.795 min
 Delta R.T.: 0.003 min
 Response: 44699
 Conc: 58.30 ng/ml

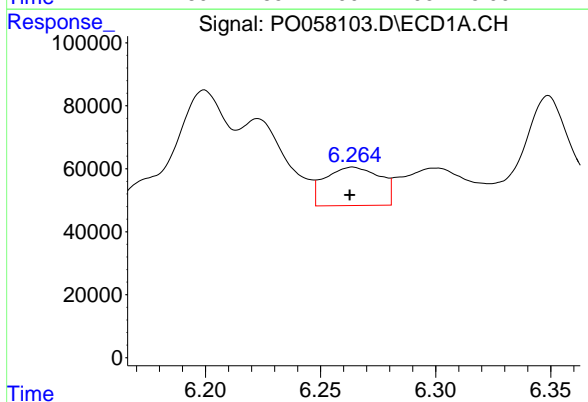


#19 AR-1242-4
 R.T.: 5.503 min
 Delta R.T.: -0.034 min
 Response: 254379
 Conc: 269.81 ng/ml

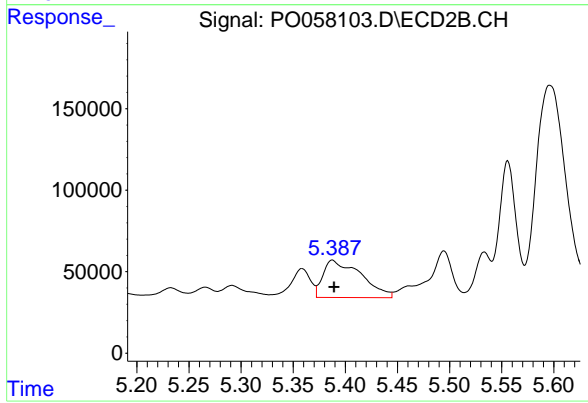
Instrument :
 ECD_O
 ClientSampleId :
 S10-02-SRE



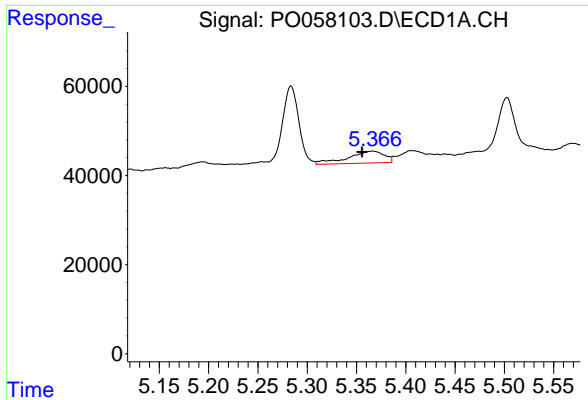
#19 AR-1242-4
 R.T.: 4.900 min
 Delta R.T.: 0.027 min
 Response: 29309
 Conc: 38.62 ng/ml



#20 AR-1242-5
 R.T.: 6.264 min
 Delta R.T.: 0.001 min
 Response: 202930
 Conc: 175.24 ng/ml

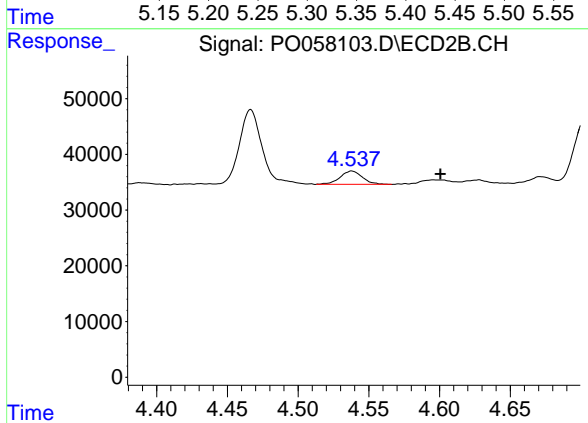


#20 AR-1242-5
 R.T.: 5.388 min
 Delta R.T.: -0.002 min
 Response: 581612
 Conc: 610.38 ng/ml

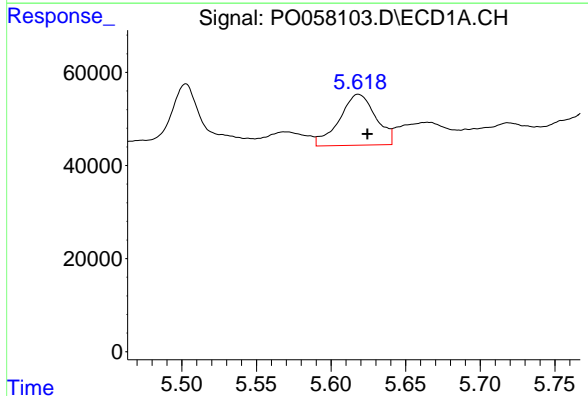


#21 AR-1248-1
 R.T.: 5.366 min
 Delta R.T.: 0.010 min
 Response: 68617
 Conc: 73.40 ng/ml

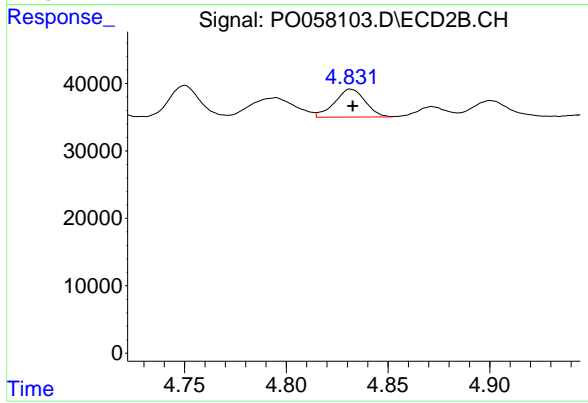
Instrument :
 ECD_O
ClientSampled :
 S10-02-SRE



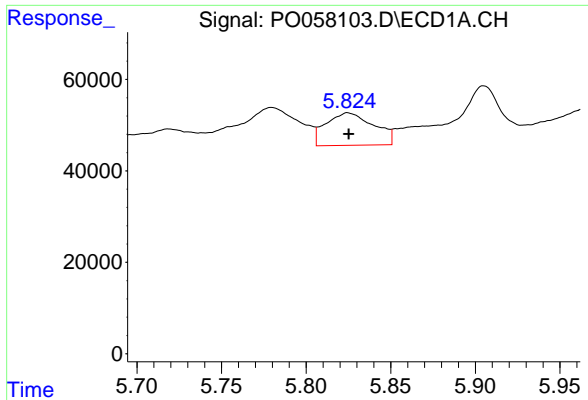
#21 AR-1248-1
 R.T.: 4.538 min
 Delta R.T.: -0.063 min
 Response: 26391
 Conc: 35.94 ng/ml



#22 AR-1248-2
 R.T.: 5.619 min
 Delta R.T.: -0.006 min
 Response: 185924
 Conc: 137.98 ng/ml



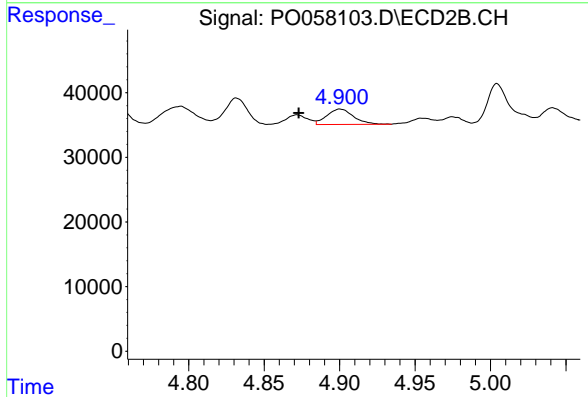
#22 AR-1248-2
 R.T.: 4.832 min
 Delta R.T.: 0.000 min
 Response: 43346
 Conc: 42.54 ng/ml



#23 AR-1248-3

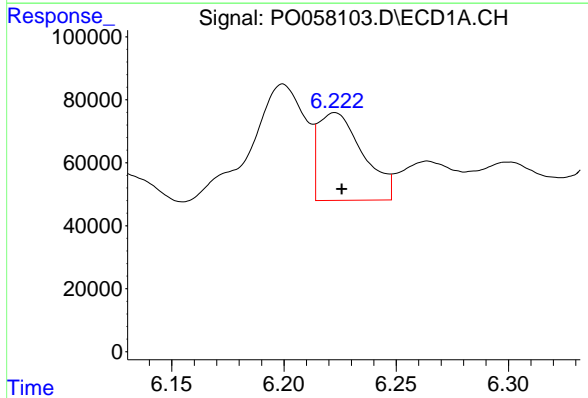
R.T.: 5.825 min
 Delta R.T.: 0.000 min
 Response: 140431
 Conc: 90.59 ng/ml

Instrument :
 ECD_O
 ClientSampleId :
 S10-02-SRE



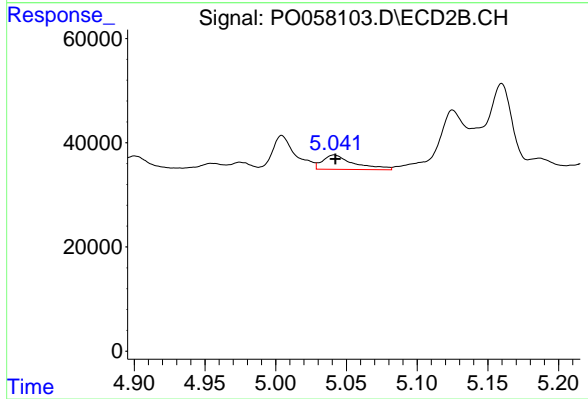
#23 AR-1248-3

R.T.: 4.900 min
 Delta R.T.: 0.027 min
 Response: 29309
 Conc: 27.88 ng/ml



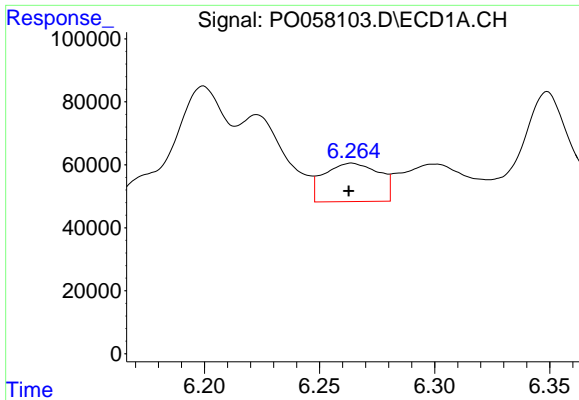
#24 AR-1248-4

R.T.: 6.222 min
 Delta R.T.: -0.003 min
 Response: 385342
 Conc: 196.82 ng/ml



#24 AR-1248-4

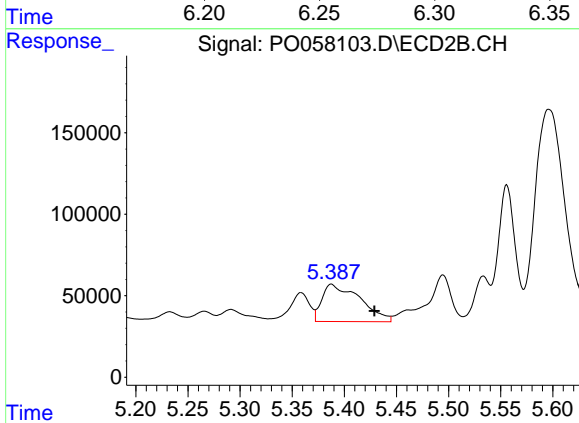
R.T.: 5.041 min
 Delta R.T.: 0.000 min
 Response: 42619
 Conc: 33.10 ng/ml



#25 AR-1248-5

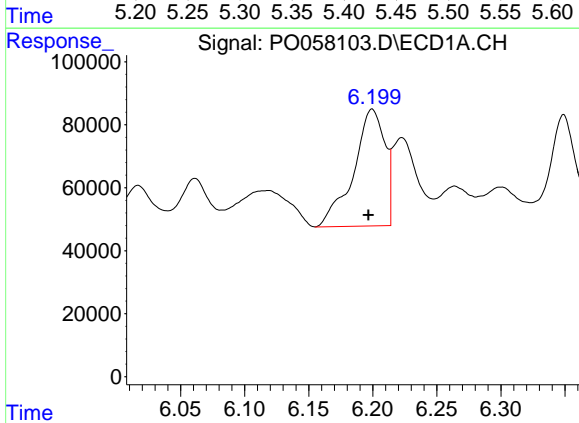
R.T.: 6.264 min
 Delta R.T.: 0.001 min
 Response: 202930
 Conc: 106.48 ng/ml

Instrument :
 ECD_O
 ClientSampleId :
 S10-02-SRE



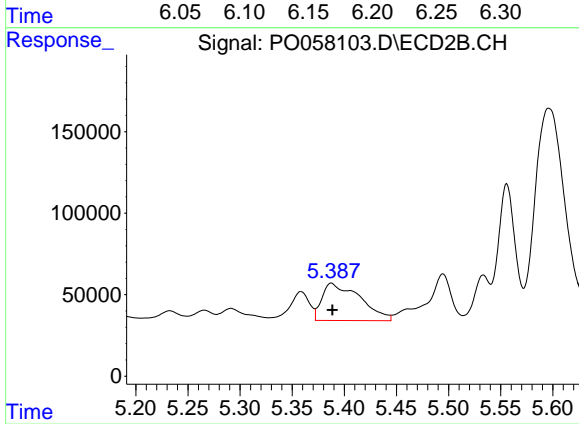
#25 AR-1248-5

R.T.: 5.388 min
 Delta R.T.: -0.041 min
 Response: 581612
 Conc: 460.07 ng/ml



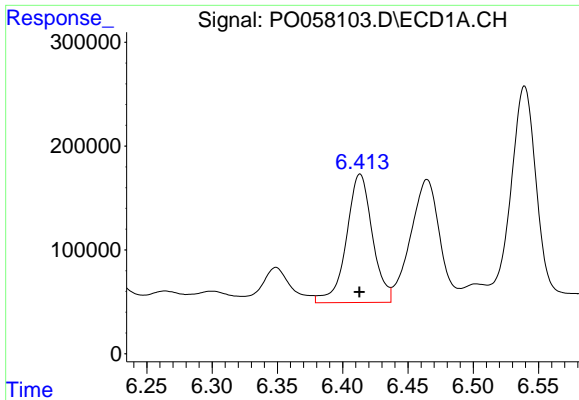
#26 AR-1254-1

R.T.: 6.200 min
 Delta R.T.: 0.003 min
 Response: 631642
 Conc: 321.41 ng/ml



#26 AR-1254-1

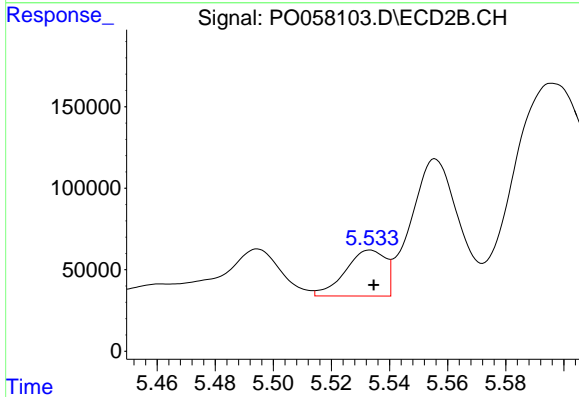
R.T.: 5.388 min
 Delta R.T.: -0.001 min
 Response: 581612
 Conc: 285.46 ng/ml



#27 AR-1254-2

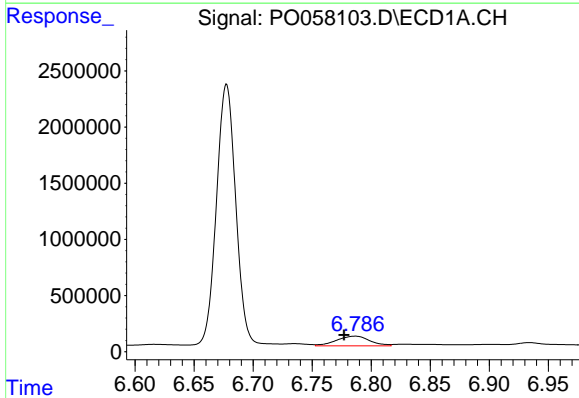
R.T.: 6.413 min
 Delta R.T.: 0.000 min
 Response: 1712610
 Conc: 523.89 ng/ml

Instrument :
 ECD_O
 ClientSampleId :
 S10-02-SRE



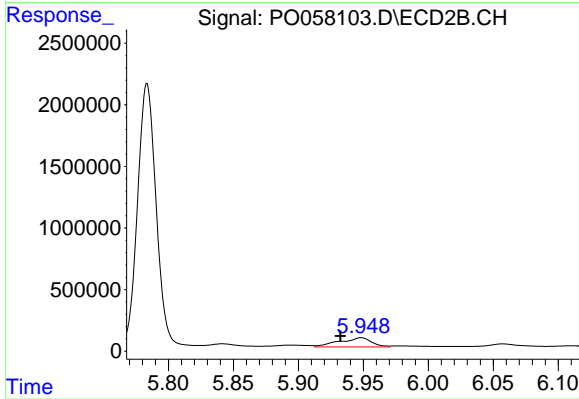
#27 AR-1254-2

R.T.: 5.533 min
 Delta R.T.: -0.001 min
 Response: 269990
 Conc: 148.99 ng/ml



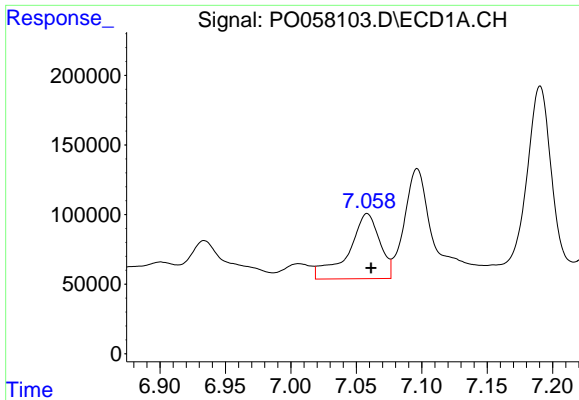
#28 AR-1254-3

R.T.: 6.786 min
 Delta R.T.: 0.009 min
 Response: 1712714
 Conc: 485.49 ng/ml



#28 AR-1254-3

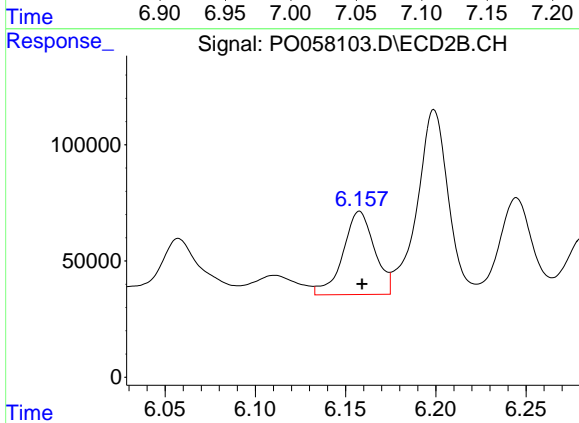
R.T.: 5.948 min
 Delta R.T.: 0.016 min
 Response: 1301257
 Conc: 444.35 ng/ml



#29 AR-1254-4

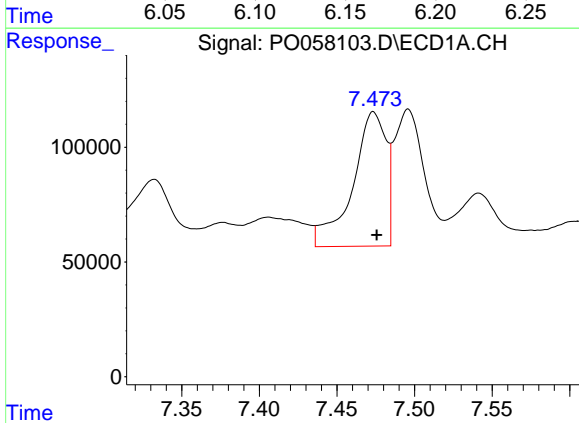
R.T.: 7.058 min
 Delta R.T.: -0.003 min
 Response: 779799
 Conc: 263.55 ng/ml

Instrument :
 ECD_O
 ClientSampled :
 S10-02-SRE



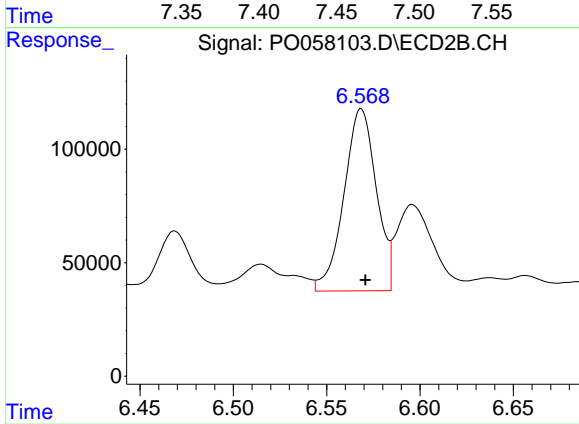
#29 AR-1254-4

R.T.: 6.158 min
 Delta R.T.: -0.001 min
 Response: 434865
 Conc: 235.36 ng/ml



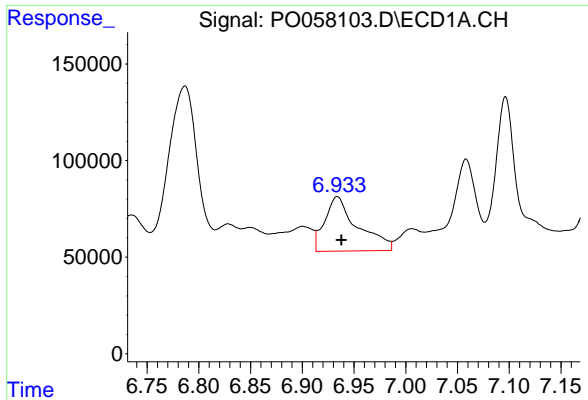
#30 AR-1254-5

R.T.: 7.474 min
 Delta R.T.: -0.002 min
 Response: 883096
 Conc: 300.86 ng/ml



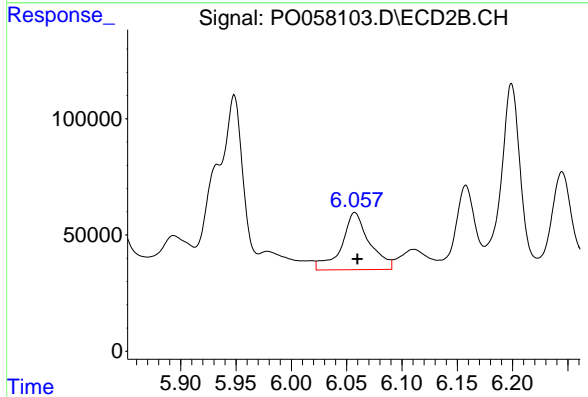
#30 AR-1254-5

R.T.: 6.569 min
 Delta R.T.: -0.002 min
 Response: 969071
 Conc: 356.47 ng/ml

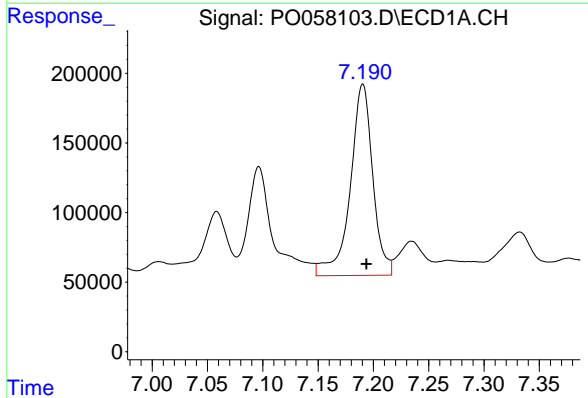


#31 AR-1260-1
 R.T.: 6.934 min
 Delta R.T.: -0.004 min
 Response: 623931
 Conc: 249.46 ng/ml

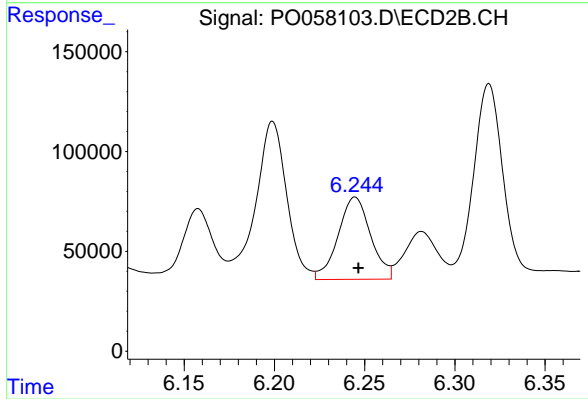
Instrument :
 ECD_O
 ClientSampleId :
 S10-02-SRE



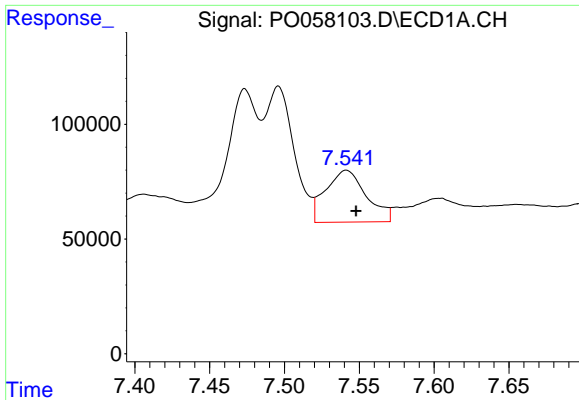
#31 AR-1260-1
 R.T.: 6.057 min
 Delta R.T.: -0.002 min
 Response: 430896
 Conc: 212.77 ng/ml



#32 AR-1260-2
 R.T.: 7.190 min
 Delta R.T.: -0.003 min
 Response: 1948148
 Conc: 554.10 ng/ml



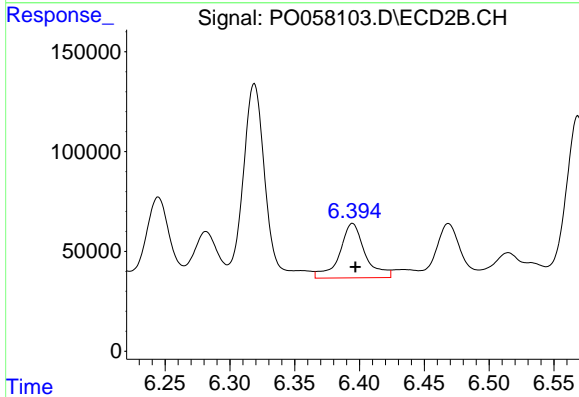
#32 AR-1260-2
 R.T.: 6.245 min
 Delta R.T.: -0.002 min
 Response: 516450
 Conc: 200.83 ng/ml



#33 AR-1260-3

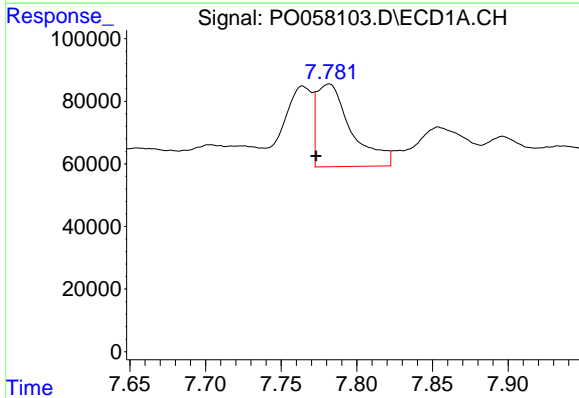
R.T.: 7.541 min
 Delta R.T.: -0.007 min
 Response: 426939
 Conc: 145.41 ng/ml

Instrument :
 ECD_O
 ClientSampled :
 S10-02-SRE



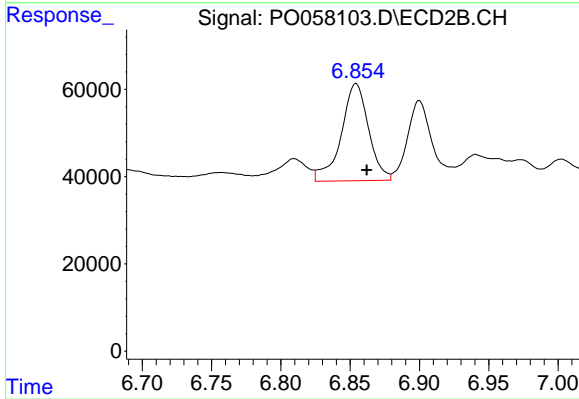
#33 AR-1260-3

R.T.: 6.395 min
 Delta R.T.: -0.002 min
 Response: 372464
 Conc: 163.31 ng/ml



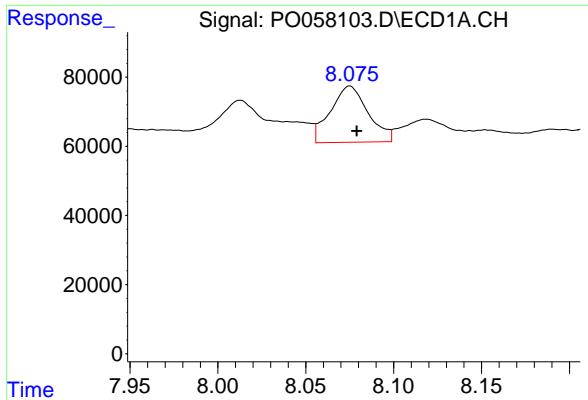
#34 AR-1260-4

R.T.: 7.781 min
 Delta R.T.: 0.008 min
 Response: 418280
 Conc: 153.12 ng/ml



#34 AR-1260-4

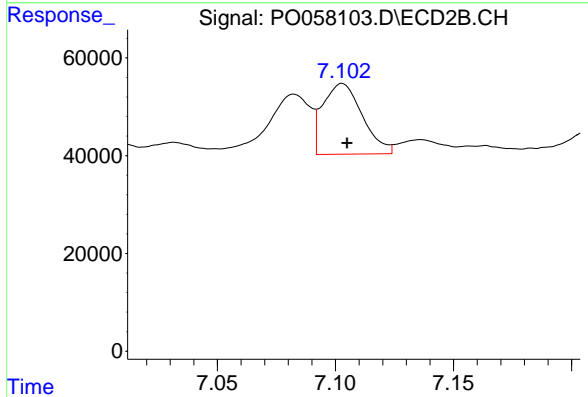
R.T.: 6.854 min
 Delta R.T.: -0.008 min
 Response: 305874
 Conc: 157.97 ng/ml



#35 AR-1260-5

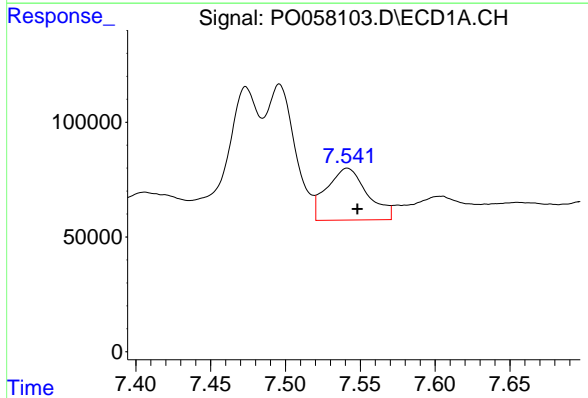
R.T.: 8.075 min
 Delta R.T.: -0.004 min
 Response: 242974
 Conc: 41.88 ng/ml

Instrument :
 ECD_O
 ClientSampleId :
 S10-02-SRE



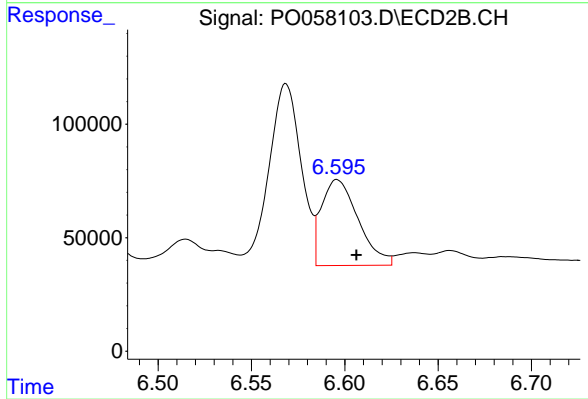
#35 AR-1260-5

R.T.: 7.103 min
 Delta R.T.: -0.002 min
 Response: 168278
 Conc: 36.56 ng/ml



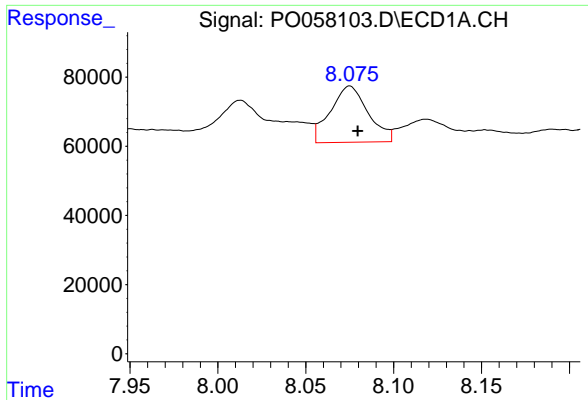
#36 AR-1262-1

R.T.: 7.541 min
 Delta R.T.: -0.007 min
 Response: 426939
 Conc: 77.28 ng/ml



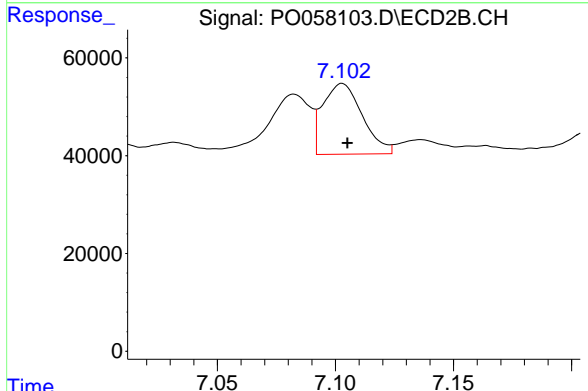
#36 AR-1262-1

R.T.: 6.596 min
 Delta R.T.: -0.010 min
 Response: 518529
 Conc: 130.54 ng/ml

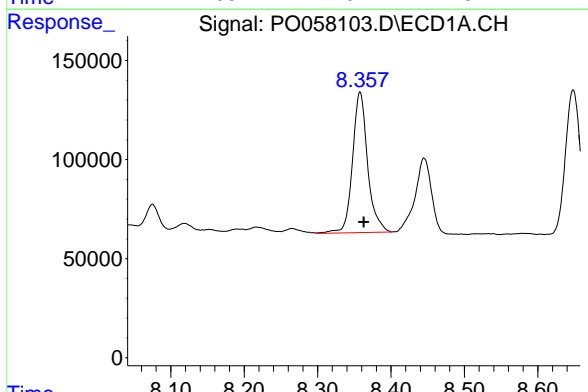


#37 AR-1262-2
 R.T.: 8.075 min
 Delta R.T.: -0.005 min
 Response: 242974
 Conc: 28.57 ng/ml

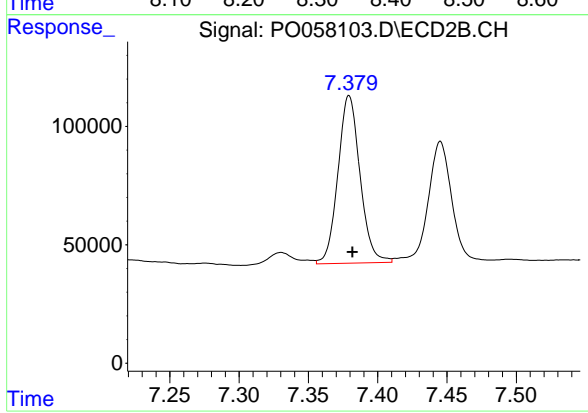
Instrument :
 ECD_O
ClientSampled :
 S10-02-SRE



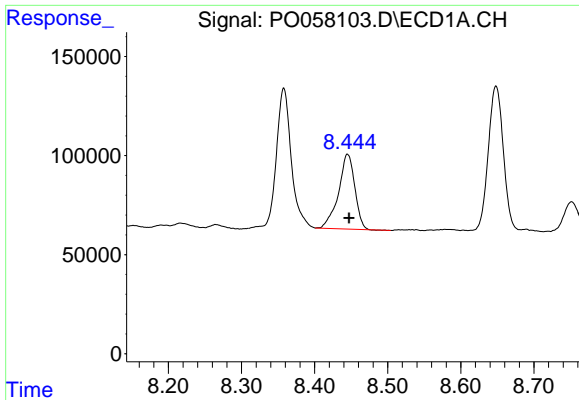
#37 AR-1262-2
 R.T.: 7.103 min
 Delta R.T.: -0.002 min
 Response: 168278
 Conc: 26.05 ng/ml



#38 AR-1262-3
 R.T.: 8.358 min
 Delta R.T.: -0.005 min
 Response: 1023824
 Conc: 181.88 ng/ml

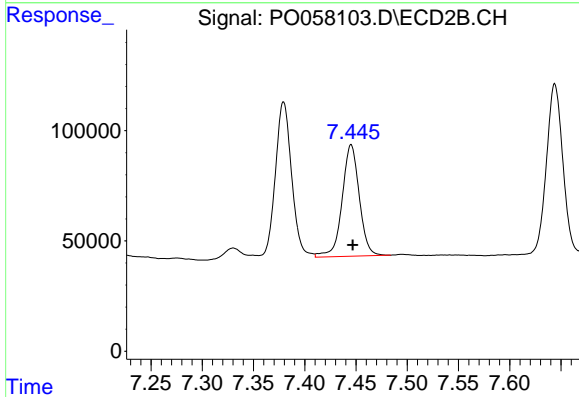


#38 AR-1262-3
 R.T.: 7.379 min
 Delta R.T.: -0.002 min
 Response: 784505
 Conc: 284.62 ng/ml

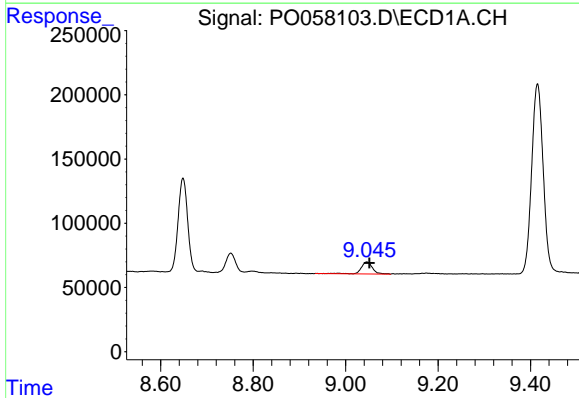


#39 AR-1262-4
 R.T.: 8.445 min
 Delta R.T.: -0.002 min
 Response: 586046
 Conc: 128.45 ng/ml

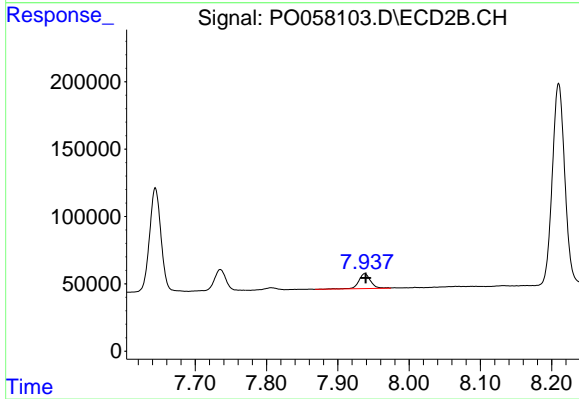
Instrument :
 ECD_O
 ClientSampleId :
 S10-02-SRE



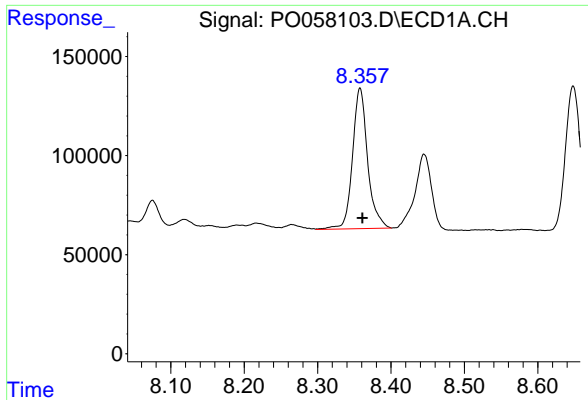
#39 AR-1262-4
 R.T.: 7.445 min
 Delta R.T.: -0.002 min
 Response: 588840
 Conc: 123.32 ng/ml



#40 AR-1262-5
 R.T.: 9.046 min
 Delta R.T.: -0.006 min
 Response: 158098
 Conc: 56.90 ng/ml

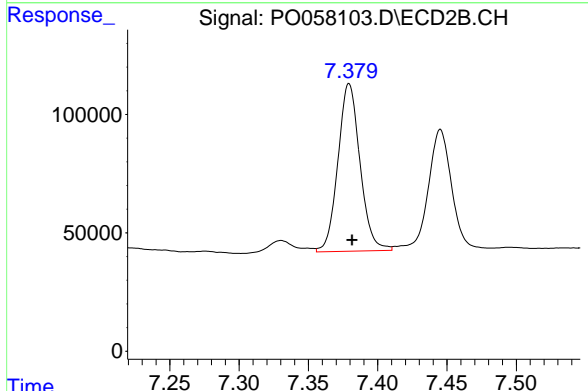


#40 AR-1262-5
 R.T.: 7.938 min
 Delta R.T.: -0.002 min
 Response: 128554
 Conc: 64.64 ng/ml

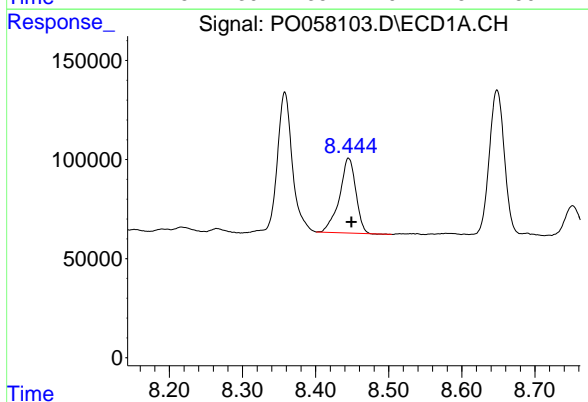


#41 AR-1268-1
 R.T.: 8.358 min
 Delta R.T.: -0.003 min
 Response: 1023824
 Conc: 99.57 ng/ml

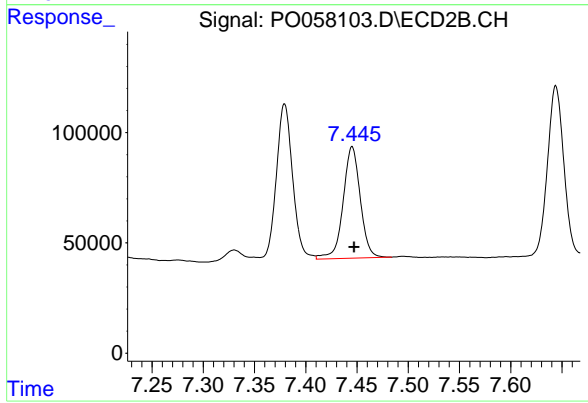
Instrument :
 ECD_O
 ClientSampleId :
 S10-02-SRE



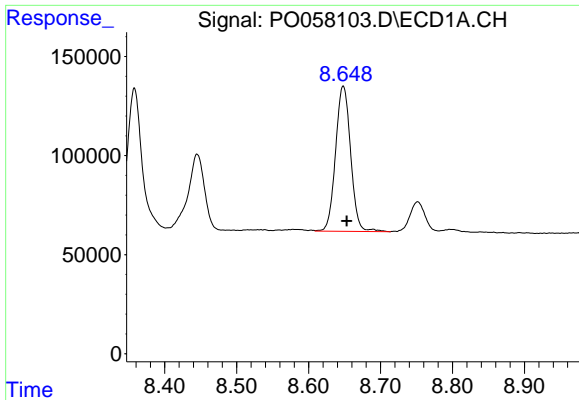
#41 AR-1268-1
 R.T.: 7.379 min
 Delta R.T.: -0.002 min
 Response: 784505
 Conc: 100.49 ng/ml



#42 AR-1268-2
 R.T.: 8.445 min
 Delta R.T.: -0.004 min
 Response: 586046
 Conc: 63.98 ng/ml



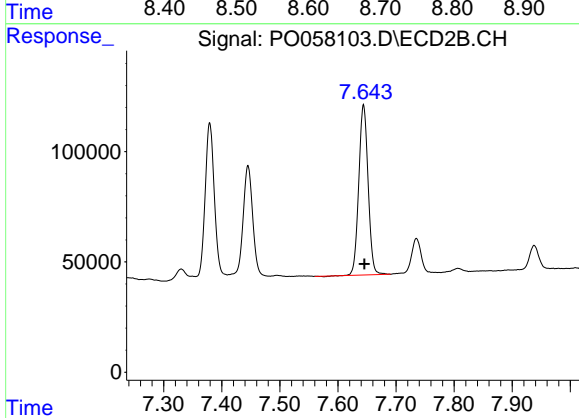
#42 AR-1268-2
 R.T.: 7.445 min
 Delta R.T.: -0.002 min
 Response: 588840
 Conc: 82.64 ng/ml



#43 AR-1268-3

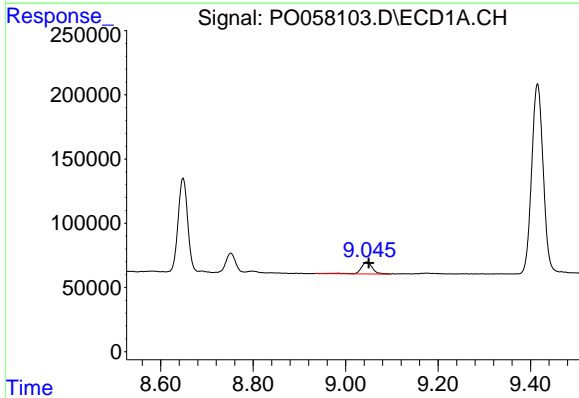
R.T.: 8.648 min
 Delta R.T.: -0.005 min
 Response: 1066584
 Conc: 133.55 ng/ml

Instrument :
 ECD_O
 ClientSampleId :
 S10-02-SRE



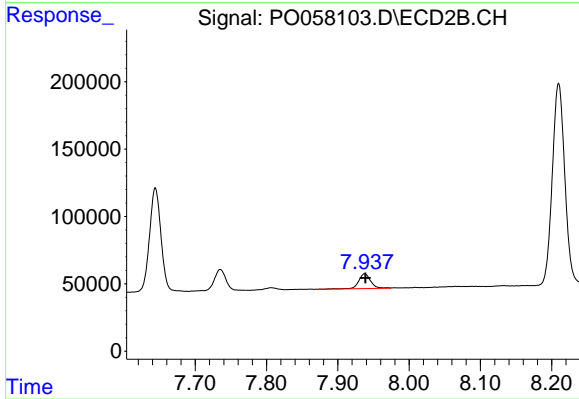
#43 AR-1268-3

R.T.: 7.644 min
 Delta R.T.: -0.001 min
 Response: 855029
 Conc: 141.95 ng/ml



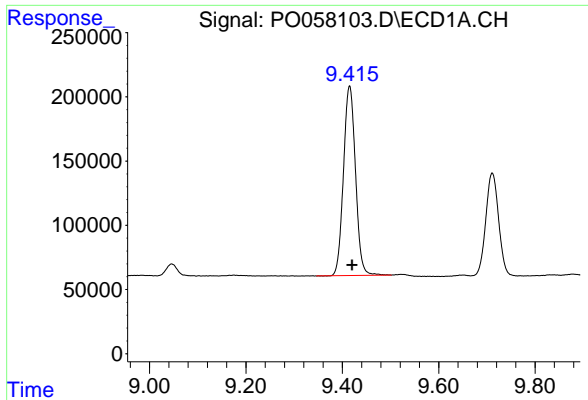
#44 AR-1268-4

R.T.: 9.046 min
 Delta R.T.: -0.004 min
 Response: 158098
 Conc: 53.35 ng/ml



#44 AR-1268-4

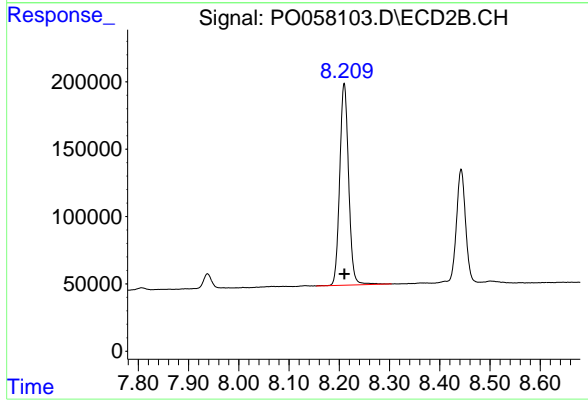
R.T.: 7.938 min
 Delta R.T.: 0.000 min
 Response: 128554
 Conc: 61.46 ng/ml



#45 AR-1268-5

R.T.: 9.415 min
Delta R.T.: -0.005 min
Response: 2559192
Conc: 117.49 ng/ml

Instrument :
ECD_O
ClientSampled :
S10-02-SRE



#45 AR-1268-5

R.T.: 8.210 min
Delta R.T.: 0.000 min
Response: 1848350
Conc: 110.84 ng/ml