

Data Path : Z:\pestpcbsrv\HPCHEM1\ECD\_0\Data\P0071921\  
 Data File : P0079644.D  
 Signal(s) : Signal #1: ECD1A.CH Signal #2: ECD2B.CH  
 Acq On : 19 Jul 2021 14:41  
 Operator : DD\AJ  
 Sample : AR1660ICC750  
 Misc :  
 ALS Vial : 4 Sample Multiplier: 1

Instrument :  
 ECD\_0  
 ClientSampleId :  
 AR1660ICC750

Integration File signal 1: autoint1.e  
 Integration File signal 2: autoint2.e  
 Quant Time: Jul 20 03:30:35 2021  
 Quant Method : Z:\pestpcbsrv\HPCHEM1\ECD\_0\methods\P0071921.M  
 Quant Title : GC EXTRACTABLES  
 QLast Update : Tue Jul 20 03:29:25 2021  
 Response via : Initial Calibration  
 Integrator: ChemStation 6890 Scale Mode: Small noise peaks clipped

Volume Inj. : 2 µl  
 Signal #1 Phase : ZB-MR1 Signal #2 Phase: ZB-MR2  
 Signal #1 Info : 30Mx0.32mmx 0.50µ Signal #2 Info : 30M x 0.32mm x 0.25µm

Compound	RT#1	RT#2	Resp#1	Resp#2	ng/ml	ng/ml
-----						
System Monitoring Compounds						
1) SA Tetrachlo...	5.017	4.236	5556734	1844336	74.990	74.211
2) SA Decachlor...	11.142	9.704	3872462	1613865	72.302	71.777
Target Compounds						
3) L1 AR-1016-1	6.347	5.518	1894538	725236	723.971	720.343
4) L1 AR-1016-2	6.371	5.539	2654651	970745	735.130	728.160
5) L1 AR-1016-3	6.438	5.737	1618214	535577	714.363	728.959
6) L1 AR-1016-4	6.546	5.787	1337428	447318	712.215	721.759
7) L1 AR-1016-5	6.862	6.023	1309825	560525	733.148	724.282
31) L7 AR-1260-1	8.044	7.142	2044995	970168	724.675	717.221
32) L7 AR-1260-2	8.311	7.339	2438995	1154621	730.142	716.963
33) L7 AR-1260-3	8.678	7.500	1843468	1083986	741.857	715.578
34) L7 AR-1260-4	8.911	7.993	2147299	907841	741.833	719.867
35) L7 AR-1260-5	9.247	8.241	4134129	2125239	736.347	729.105

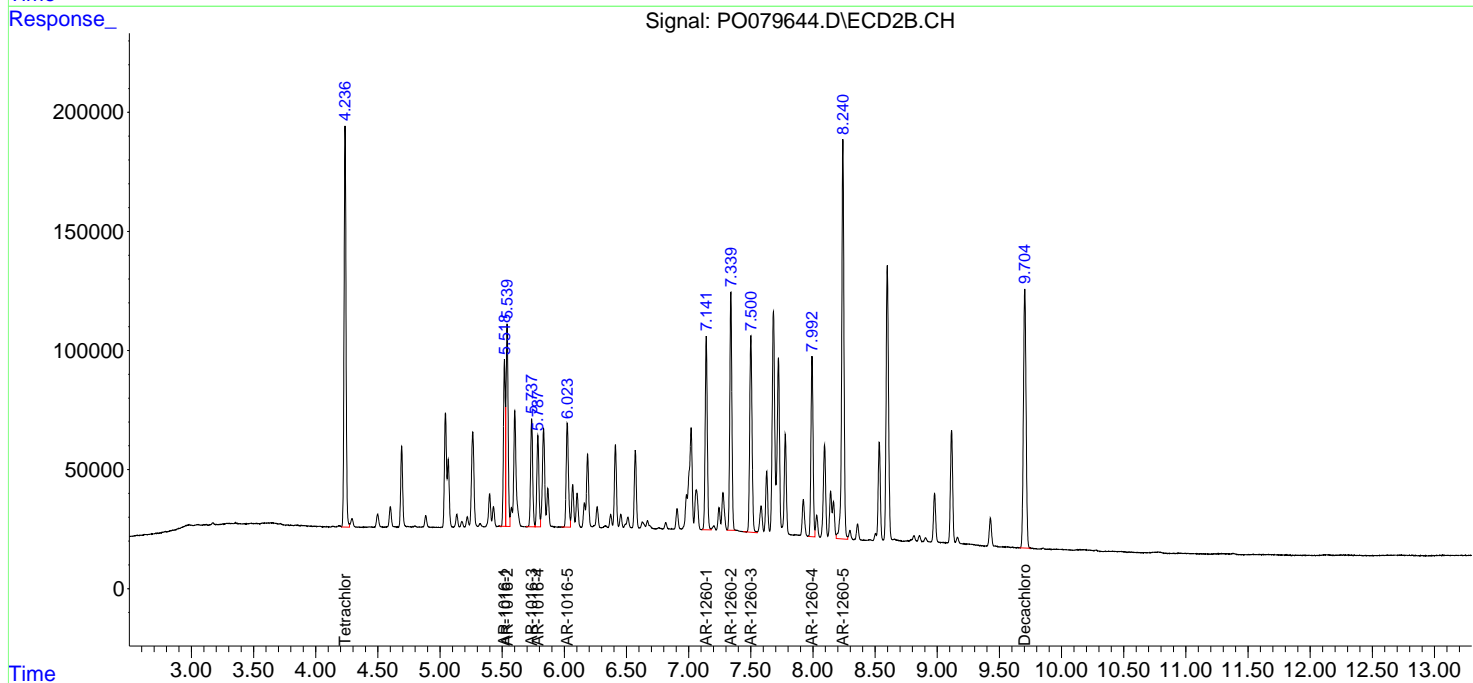
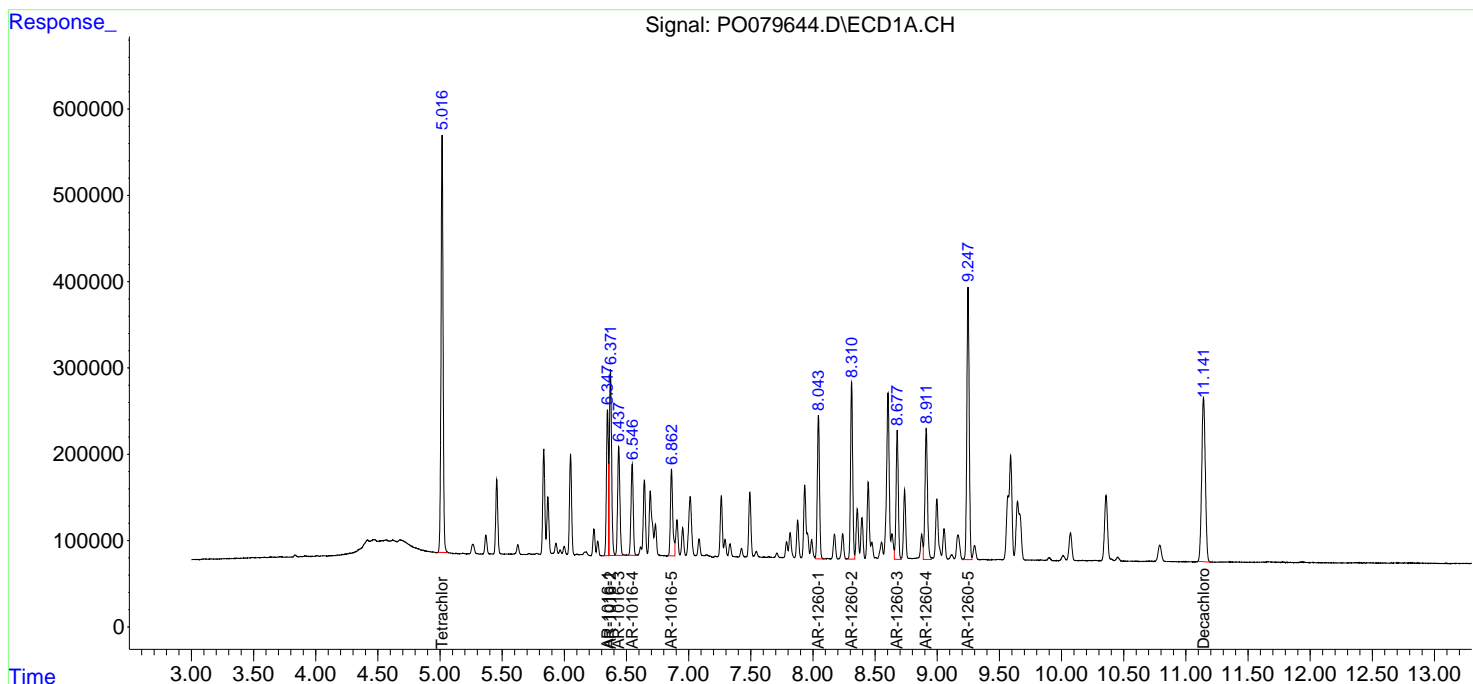
(f)=RT Delta > 1/2 Window (#)=Amounts differ by > 25% (m)=manual int.

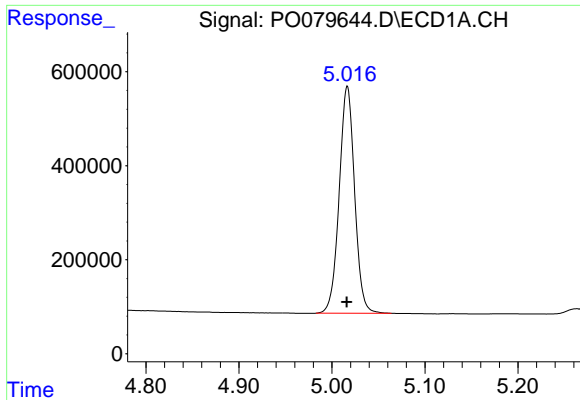
Data Path : Z:\pestpcbsrv\HPCHEM1\ECD\_O\Data\P0071921\  
 Data File : P0079644.D  
 Signal(s) : Signal #1: ECD1A.CH Signal #2: ECD2B.CH  
 Acq On : 19 Jul 2021 14:41  
 Operator : DD\AJ  
 Sample : AR1660ICC750  
 Misc :  
 ALS Vial : 4 Sample Multiplier: 1

Instrument :  
 ECD\_O  
 Client Sampled :  
 AR1660ICC750

Integration File signal 1: autoint1.e  
 Integration File signal 2: autoint2.e  
 Quant Time: Jul 20 03:30:35 2021  
 Quant Method : Z:\pestpcbsrv\HPCHEM1\ECD\_O\methods\P0071921.M  
 Quant Title : GC EXTRACTABLES  
 QLast Update : Tue Jul 20 03:29:25 2021  
 Response via : Initial Calibration  
 Integrator: ChemStation 6890 Scale Mode: Small noise peaks clipped

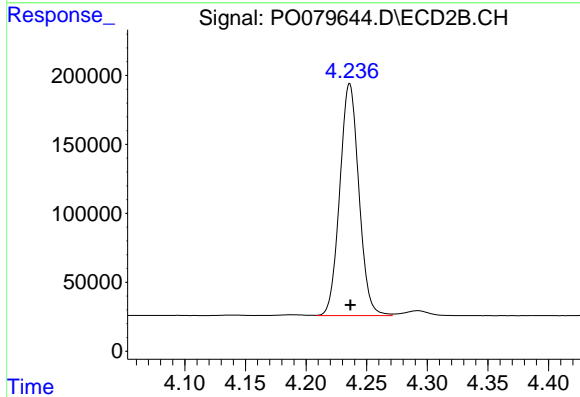
Volume Inj. : 2 µl  
 Signal #1 Phase : ZB-MR1 Signal #2 Phase: ZB-MR2  
 Signal #1 Info : 30Mx0.32mmx 0.50µ Signal #2 Info : 30M x 0.32mm x 0.25µm



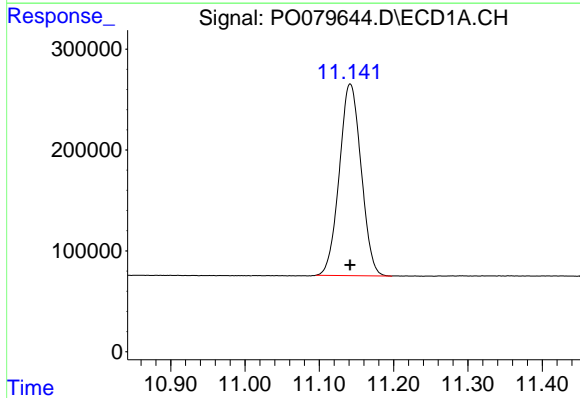


#1 Tetrachloro-m-xylene  
 R.T.: 5.017 min  
 Delta R.T.: 0.000 min  
 Response: 5556734  
 Conc: 74.99 ng/ml

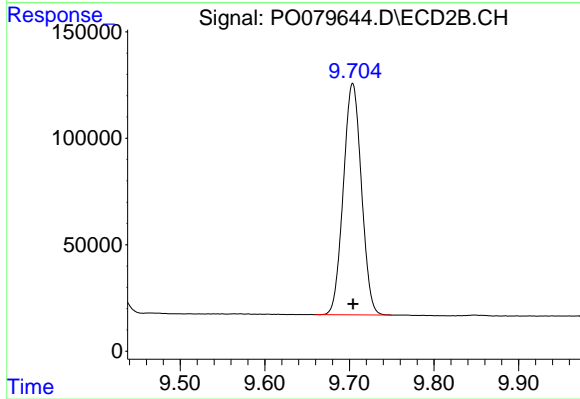
Instrument :  
 ECD\_O  
 ClientSampleId :  
 AR1660ICC750



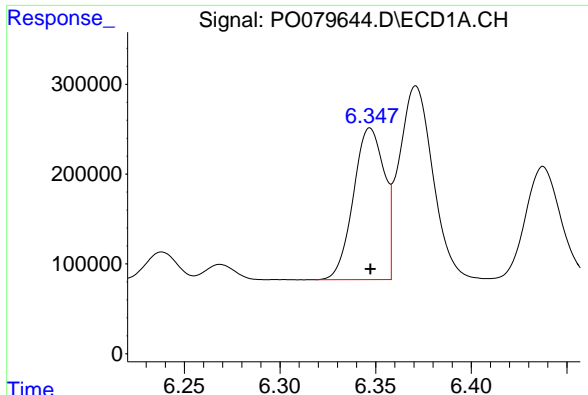
#1 Tetrachloro-m-xylene  
 R.T.: 4.236 min  
 Delta R.T.: 0.000 min  
 Response: 1844336  
 Conc: 74.21 ng/ml



#2 Decachlorobiphenyl  
 R.T.: 11.142 min  
 Delta R.T.: 0.000 min  
 Response: 3872462  
 Conc: 72.30 ng/ml



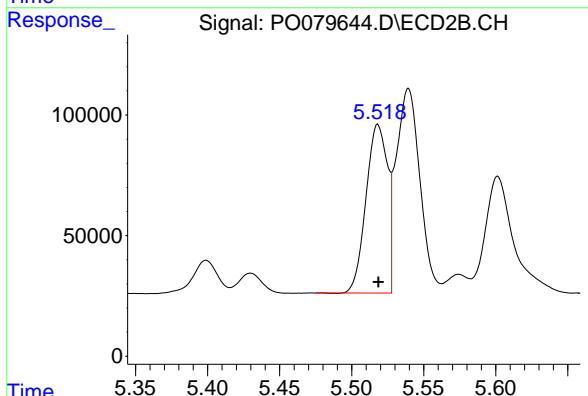
#2 Decachlorobiphenyl  
 R.T.: 9.704 min  
 Delta R.T.: 0.000 min  
 Response: 1613865  
 Conc: 71.78 ng/ml



#3 AR-1016-1

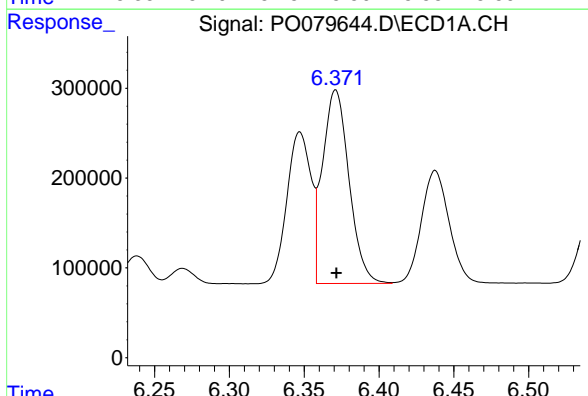
R.T.: 6.347 min  
 Delta R.T.: 0.000 min  
 Response: 1894538  
 Conc: 723.97 ng/ml

Instrument :  
 ECD\_O  
 ClientSampleId :  
 AR1660ICC750



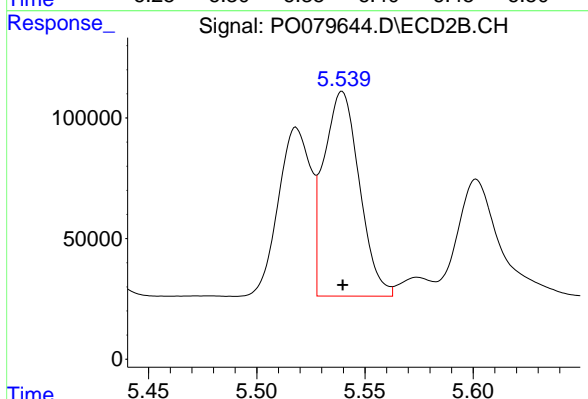
#3 AR-1016-1

R.T.: 5.518 min  
 Delta R.T.: 0.000 min  
 Response: 725236  
 Conc: 720.34 ng/ml



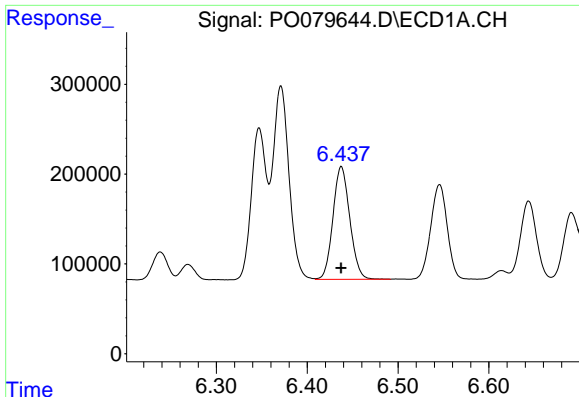
#4 AR-1016-2

R.T.: 6.371 min  
 Delta R.T.: 0.000 min  
 Response: 2654651  
 Conc: 735.13 ng/ml



#4 AR-1016-2

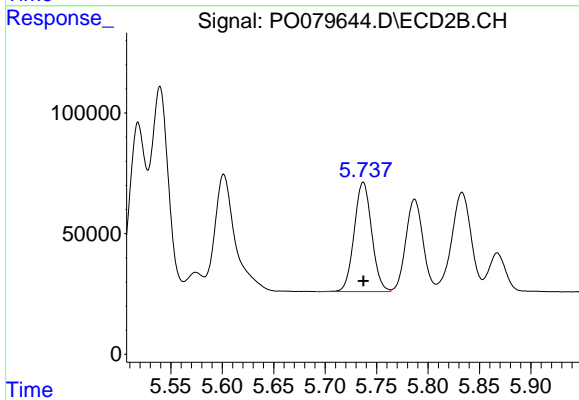
R.T.: 5.539 min  
 Delta R.T.: 0.000 min  
 Response: 970745  
 Conc: 728.16 ng/ml



#5 AR-1016-3

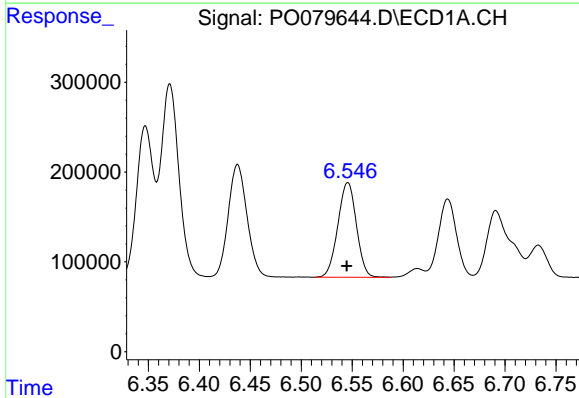
R.T.: 6.438 min  
Delta R.T.: 0.000 min  
Response: 1618214  
Conc: 714.36 ng/ml

Instrument :  
ECD\_O  
ClientSampleId :  
AR1660ICC750



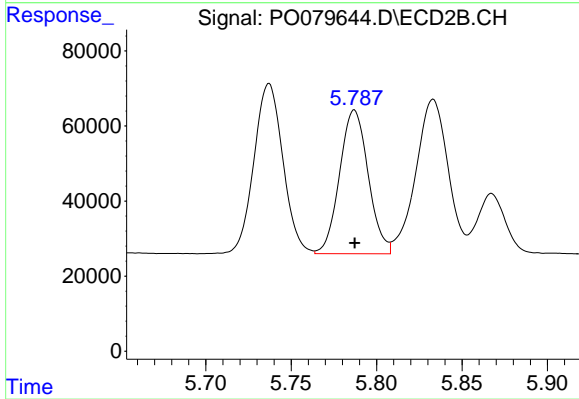
#5 AR-1016-3

R.T.: 5.737 min  
Delta R.T.: 0.000 min  
Response: 535577  
Conc: 728.96 ng/ml



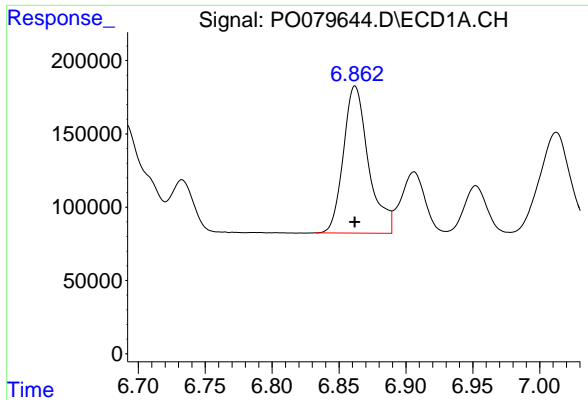
#6 AR-1016-4

R.T.: 6.546 min  
Delta R.T.: 0.001 min  
Response: 1337428  
Conc: 712.22 ng/ml



#6 AR-1016-4

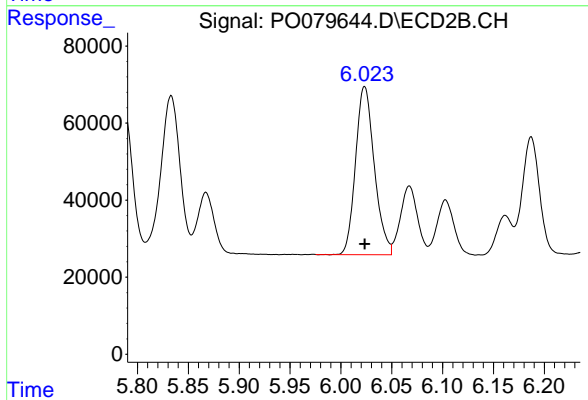
R.T.: 5.787 min  
Delta R.T.: 0.000 min  
Response: 447318  
Conc: 721.76 ng/ml



#7 AR-1016-5

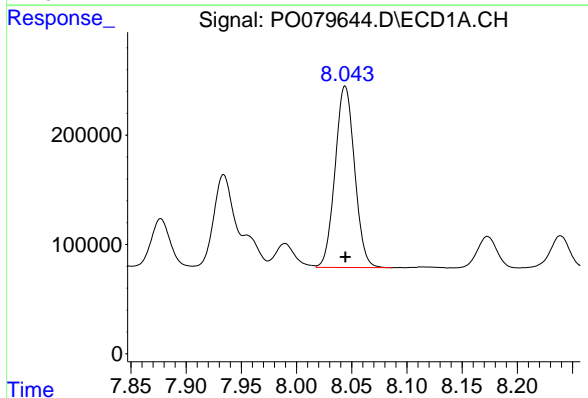
R.T.: 6.862 min  
 Delta R.T.: 0.000 min  
 Response: 1309825  
 Conc: 733.15 ng/ml

Instrument :  
 ECD\_O  
 ClientSampled :  
 AR1660ICC750



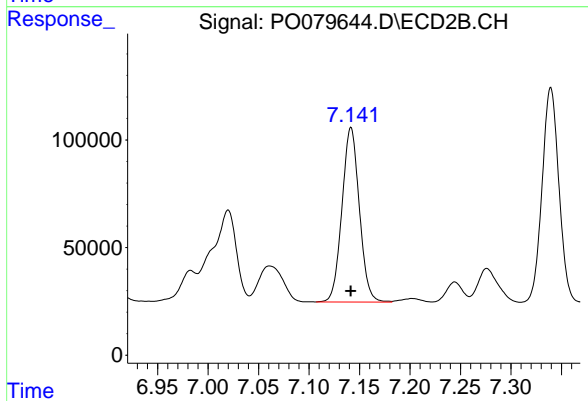
#7 AR-1016-5

R.T.: 6.023 min  
 Delta R.T.: 0.000 min  
 Response: 560525  
 Conc: 724.28 ng/ml



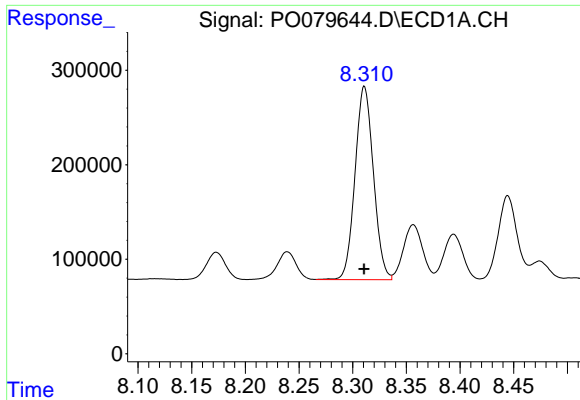
#31 AR-1260-1

R.T.: 8.044 min  
 Delta R.T.: 0.000 min  
 Response: 2044995  
 Conc: 724.67 ng/ml



#31 AR-1260-1

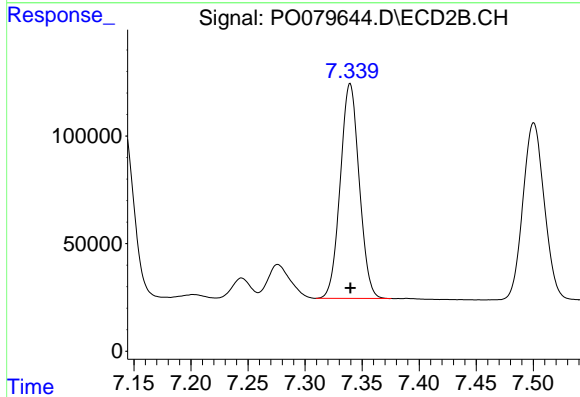
R.T.: 7.142 min  
 Delta R.T.: 0.000 min  
 Response: 970168  
 Conc: 717.22 ng/ml



#32 AR-1260-2

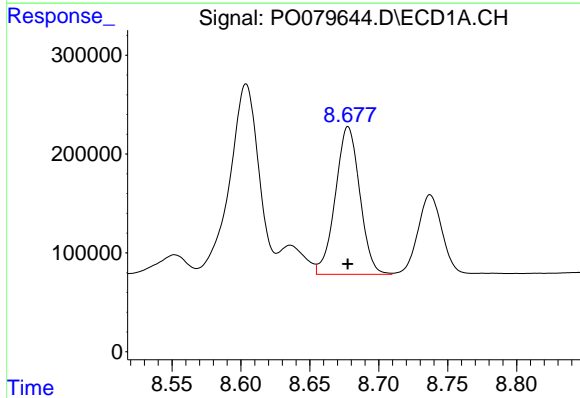
R.T.: 8.311 min  
 Delta R.T.: 0.000 min  
 Response: 2438995  
 Conc: 730.14 ng/ml

Instrument :  
 ECD\_O  
 ClientSampleId :  
 AR1660ICC750



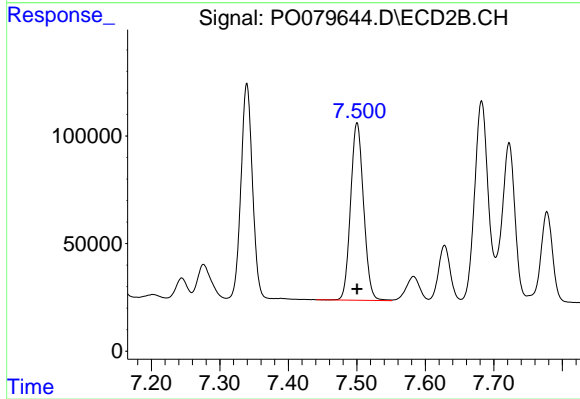
#32 AR-1260-2

R.T.: 7.339 min  
 Delta R.T.: 0.000 min  
 Response: 1154621  
 Conc: 716.96 ng/ml



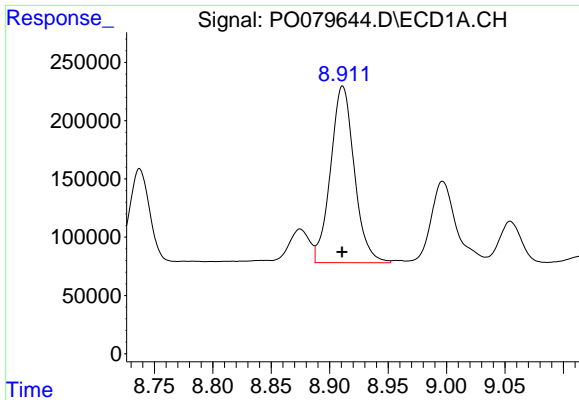
#33 AR-1260-3

R.T.: 8.678 min  
 Delta R.T.: 0.000 min  
 Response: 1843468  
 Conc: 741.86 ng/ml



#33 AR-1260-3

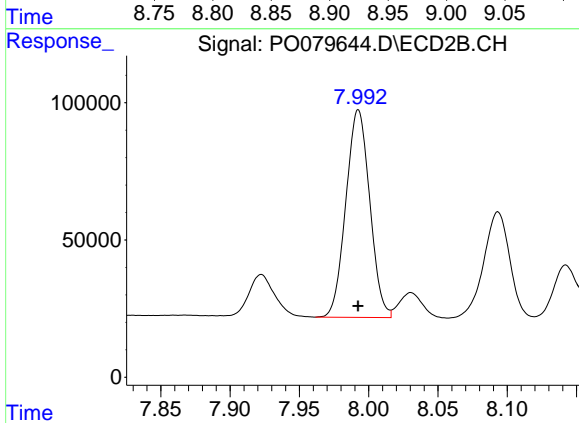
R.T.: 7.500 min  
 Delta R.T.: 0.000 min  
 Response: 1083986  
 Conc: 715.58 ng/ml



#34 AR-1260-4

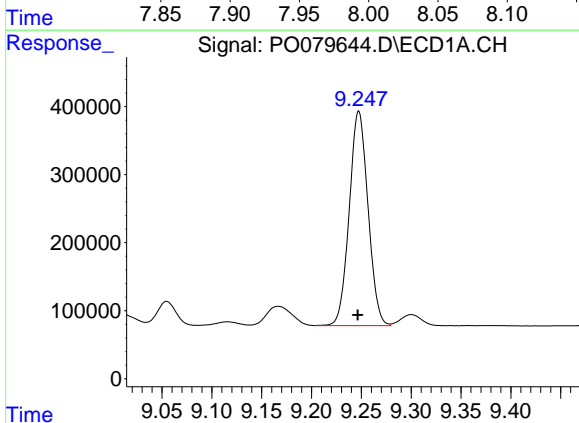
R.T.: 8.911 min  
 Delta R.T.: 0.000 min  
 Response: 2147299  
 Conc: 741.83 ng/ml

Instrument :  
 ECD\_O  
 ClientSampleId :  
 AR1660ICC750



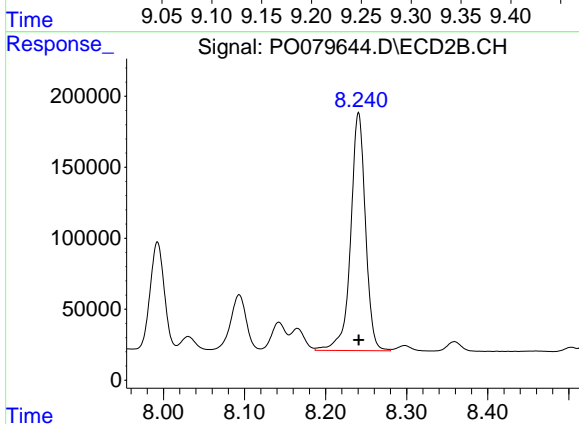
#34 AR-1260-4

R.T.: 7.993 min  
 Delta R.T.: 0.000 min  
 Response: 907841  
 Conc: 719.87 ng/ml



#35 AR-1260-5

R.T.: 9.247 min  
 Delta R.T.: 0.000 min  
 Response: 4134129  
 Conc: 736.35 ng/ml



#35 AR-1260-5

R.T.: 8.241 min  
 Delta R.T.: 0.000 min  
 Response: 2125239  
 Conc: 729.10 ng/ml