

Data Path : Z:\pestpcbsrv\HPCHEM1\ECD_0\Data\P0072019\
 Data File : P0058186.D
 Signal(s) : Signal #1: ECD1A.CH Signal #2: ECD2B.CH
 Acq On : 19 Jul 2019 23:43
 Operator : SM/AJ
 Sample : I.BLK
 Misc :
 ALS Vial : 2 Sample Multiplier: 1

Instrument :
 ECD_O
 ClientSampleId :
 I.BLK

Integration File signal 1: autoint1.e
 Integration File signal 2: autoint2.e
 Quant Time: Jul 20 01:41:54 2019
 Quant Method : Z:\pestpcbsrv\HPCHEM1\ECD_0\methods\P0071719.M
 Quant Title : GC EXTRACTABLES
 QLast Update : Wed Jul 17 11:13:08 2019
 Response via : Initial Calibration
 Integrator: ChemStation 6890 Scale Mode: Small noise peaks clipped

Volume Inj. : 2 µl
 Signal #1 Phase : ZB-MR1 Signal #2 Phase: ZB-MR2
 Signal #1 Info : 30Mx0.32mmx 0.50µ Signal #2 Info : 30M x 0.32mm x 0.25µm

Compound	RT#1	RT#2	Resp#1	Resp#2	ng/ml	ng/ml

System Monitoring Compounds						
1) SA Tetrachlo...	4.192	3.535	602637	604713	17.784	18.854
2) SA Decachlor...	9.702	8.437	1042962	703223	20.387	20.517
Target Compounds						
12) L3 AR-1232-2	5.034	0.000	31783	0	68.722	N.D. #
20) L4 AR-1242-5	6.201	0.000	76932	0	66.436	N.D. #
24) L5 AR-1248-4	6.201	0.000	76932	0	39.294	N.D. #
25) L5 AR-1248-5	6.201	0.000	76932	0	40.367	N.D. #
26) L6 AR-1254-1	6.201	0.000	76932	0	39.148	N.D. #
27) L6 AR-1254-2	6.436	0.000	130982	0	40.067	N.D. #
28) L6 AR-1254-3	6.793	0.000	295311	0	83.710	N.D. #
31) L7 AR-1260-1	6.904	0.000	27525	0	11.005	N.D. #
32) L7 AR-1260-2	7.134	0.000	115278	0	32.788	N.D. #

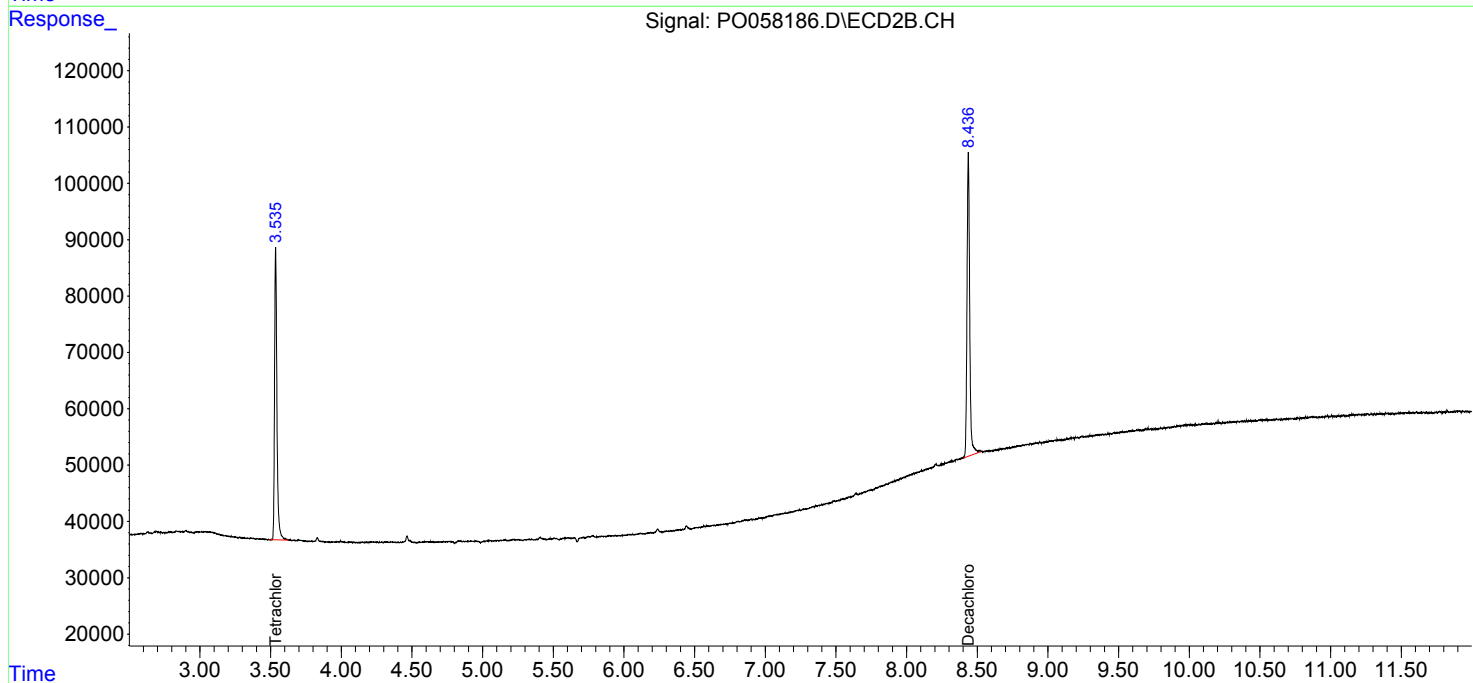
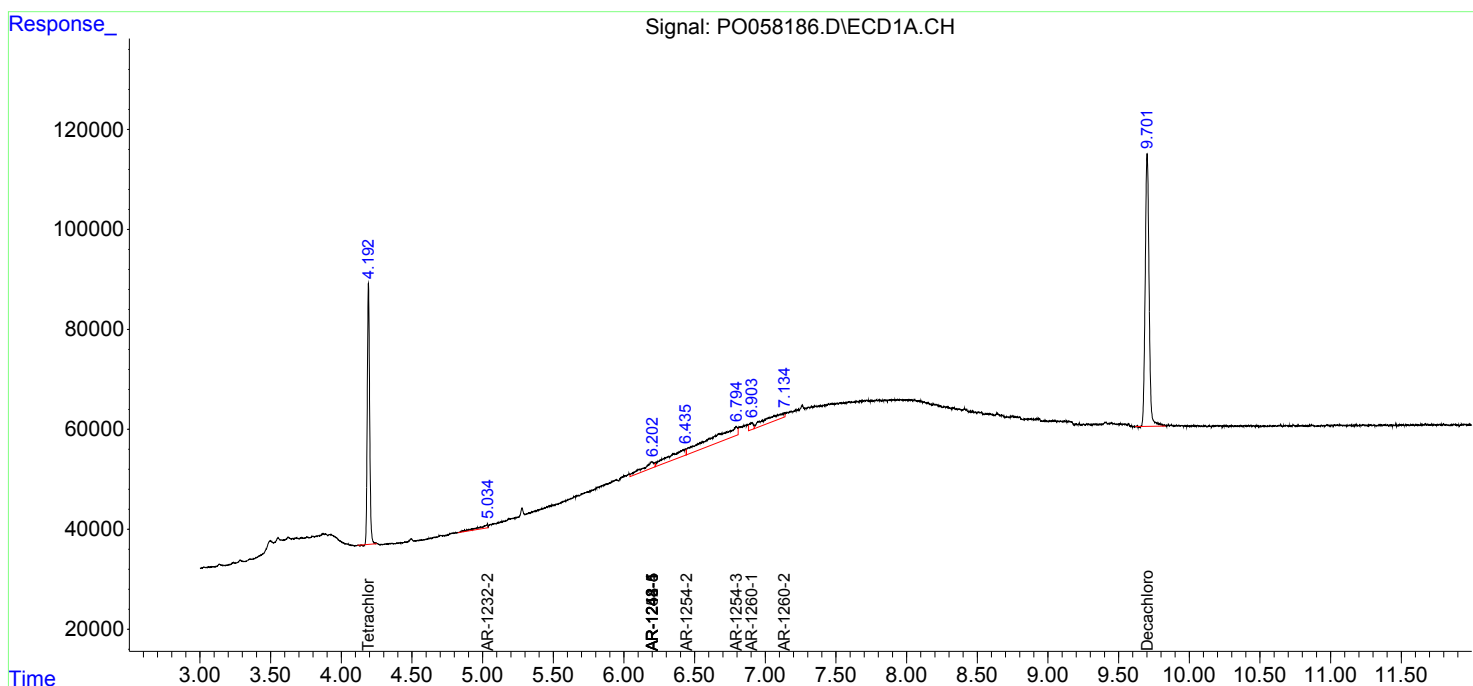
(f)=RT Delta > 1/2 Window (#)=Amounts differ by > 25% (m)=manual int.

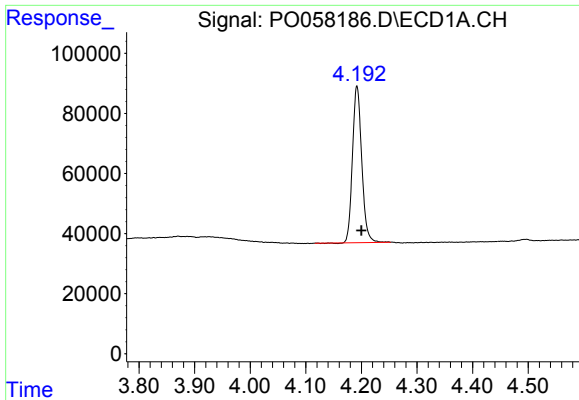
Data Path : Z:\pestpcbsrv\HPCHEM1\ECD_0\Data\P0072019\
 Data File : P0058186.D
 Signal(s) : Signal #1: ECD1A.CH Signal #2: ECD2B.CH
 Acq On : 19 Jul 2019 23:43
 Operator : SM/AJ
 Sample : I.BLK
 Misc :
 ALS Vial : 2 Sample Multiplier: 1

Instrument :
 ECD_O
 ClientSampled :
 I.BLK

Integration File signal 1: autoint1.e
 Integration File signal 2: autoint2.e
 Quant Time: Jul 20 01:41:54 2019
 Quant Method : Z:\pestpcbsrv\HPCHEM1\ECD_0\methods\P0071719.M
 Quant Title : GC EXTRACTABLES
 QLast Update : Wed Jul 17 11:13:08 2019
 Response via : Initial Calibration
 Integrator: ChemStation 6890 Scale Mode: Small noise peaks clipped

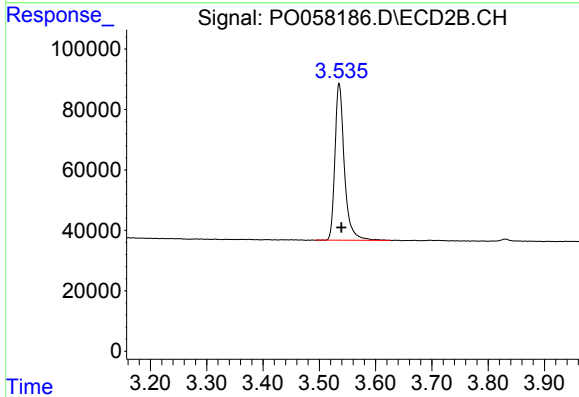
Volume Inj. : 2 µl
 Signal #1 Phase : ZB-MR1 Signal #2 Phase: ZB-MR2
 Signal #1 Info : 30Mx0.32mmx 0.50µ Signal #2 Info : 30M x 0.32mm x 0.25µm



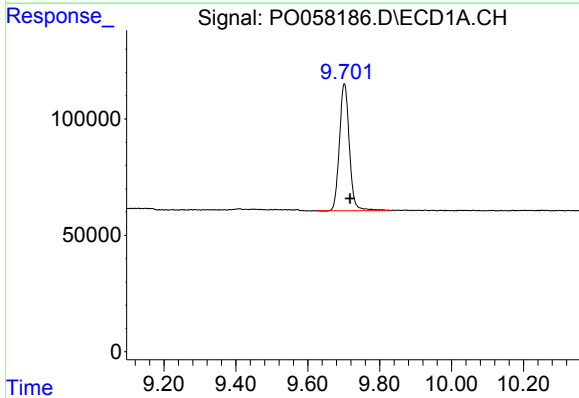


#1 Tetrachloro-m-xylene
 R.T.: 4.192 min
 Delta R.T.: -0.008 min
 Response: 602637
 Conc: 17.78 ng/ml

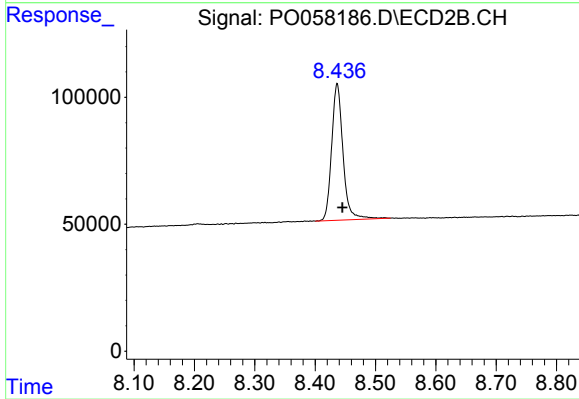
Instrument :
 ECD_O
 ClientSampled :
 I.BLK



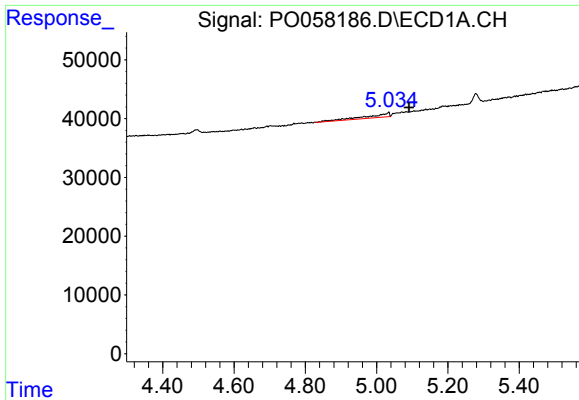
#1 Tetrachloro-m-xylene
 R.T.: 3.535 min
 Delta R.T.: -0.004 min
 Response: 604713
 Conc: 18.85 ng/ml



#2 Decachlorobiphenyl
 R.T.: 9.702 min
 Delta R.T.: -0.016 min
 Response: 1042962
 Conc: 20.39 ng/ml



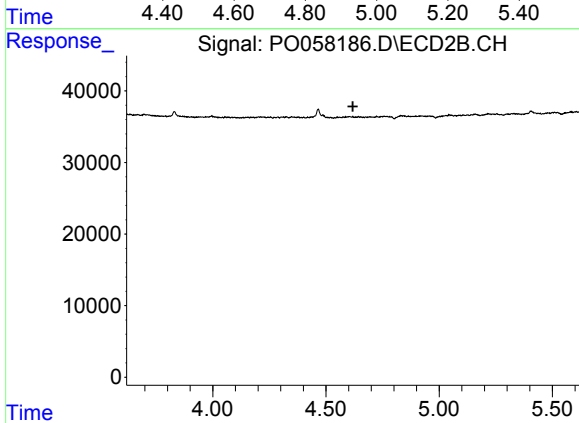
#2 Decachlorobiphenyl
 R.T.: 8.437 min
 Delta R.T.: -0.009 min
 Response: 703223
 Conc: 20.52 ng/ml



#12 AR-1232-2

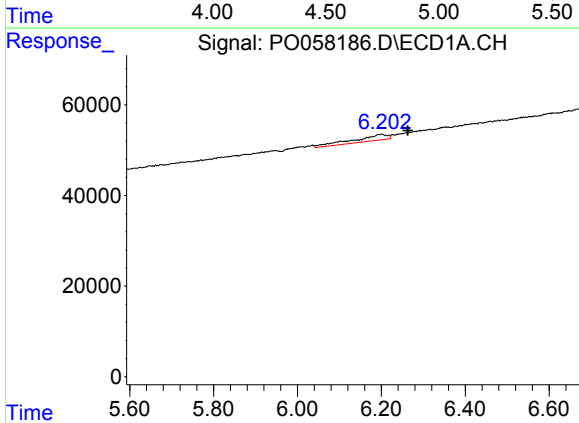
R.T.: 5.034 min
 Delta R.T.: -0.058 min
 Response: 31783
 Conc: 68.72 ng/ml

Instrument :
 ECD_O
 ClientSampled :
 I.BLK



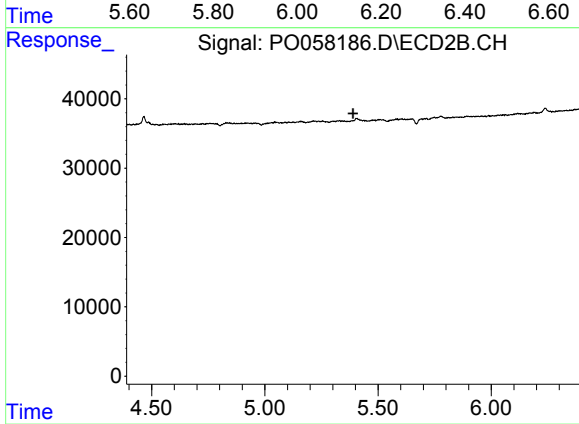
#12 AR-1232-2

R.T.: 0.000 min
 Exp R.T. : 4.619 min
 Response: 0
 Conc: N.D.



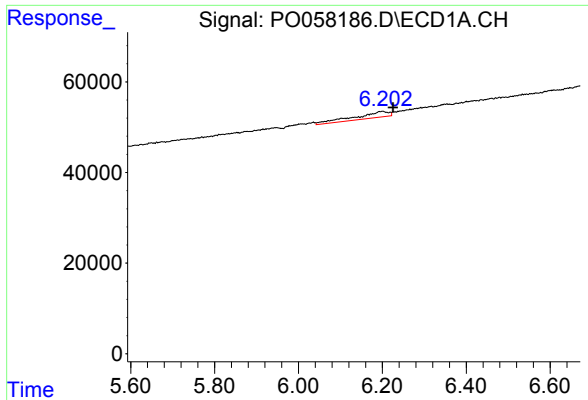
#20 AR-1242-5

R.T.: 6.201 min
 Delta R.T.: -0.062 min
 Response: 76932
 Conc: 66.44 ng/ml



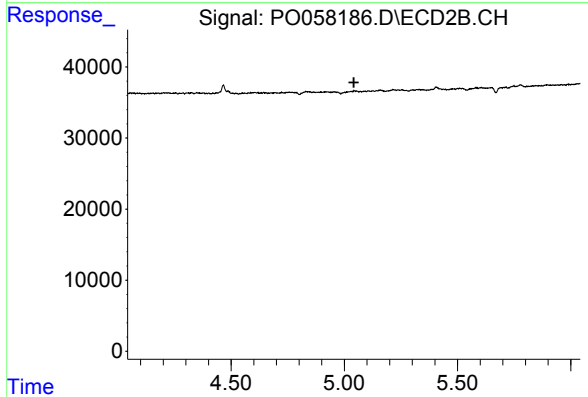
#20 AR-1242-5

R.T.: 0.000 min
 Exp R.T. : 5.389 min
 Response: 0
 Conc: N.D.

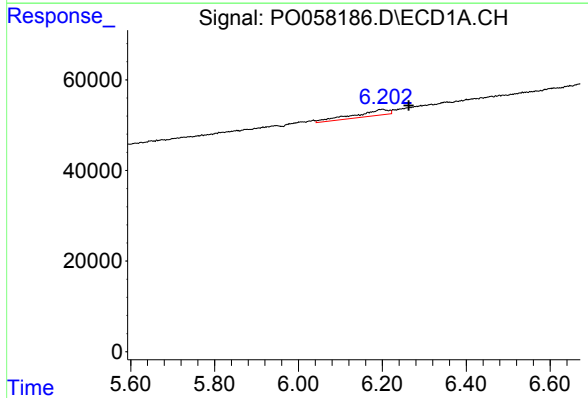


#24 AR-1248-4
 R.T.: 6.201 min
 Delta R.T.: -0.025 min
 Response: 76932
 Conc: 39.29 ng/ml

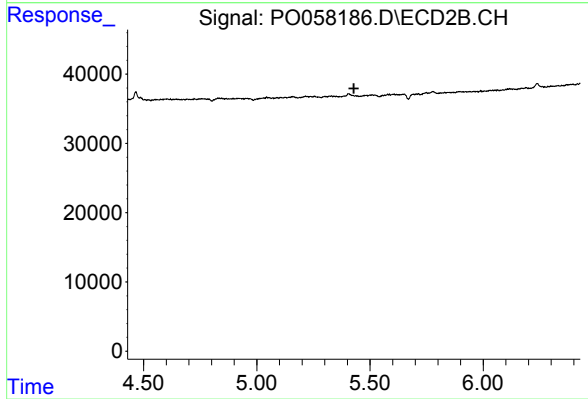
Instrument :
 ECD_O
 ClientSampled :
 I.BLK



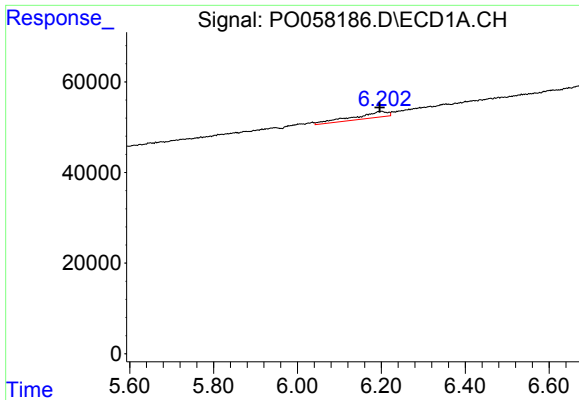
#24 AR-1248-4
 R.T.: 0.000 min
 Exp R.T. : 5.042 min
 Response: 0
 Conc: N.D.



#25 AR-1248-5
 R.T.: 6.201 min
 Delta R.T.: -0.062 min
 Response: 76932
 Conc: 40.37 ng/ml



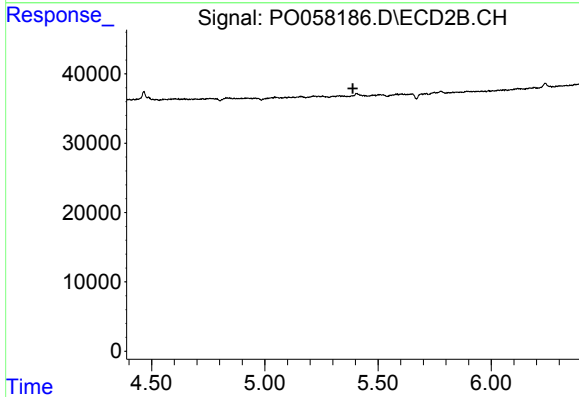
#25 AR-1248-5
 R.T.: 0.000 min
 Exp R.T. : 5.429 min
 Response: 0
 Conc: N.D.



#26 AR-1254-1

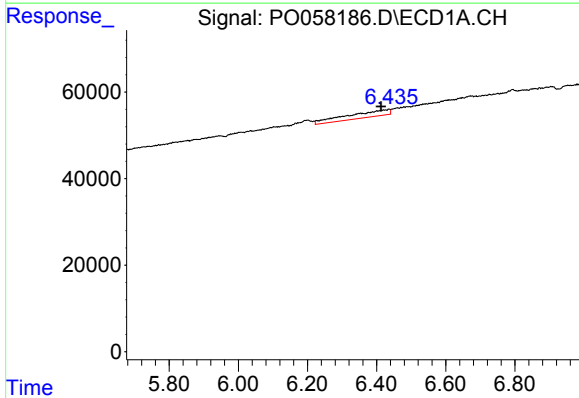
R.T.: 6.201 min
 Delta R.T.: 0.005 min
 Response: 76932
 Conc: 39.15 ng/ml

Instrument :
 ECD_O
 ClientSampled :
 I.BLK



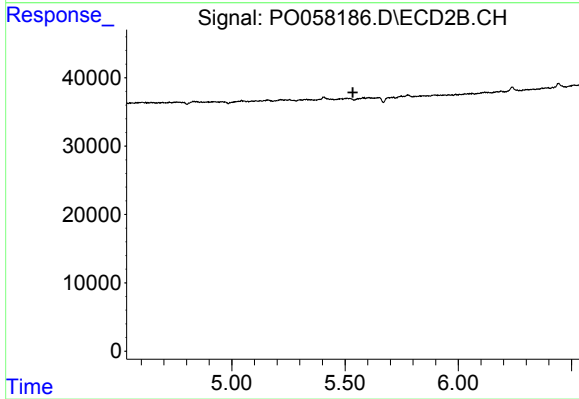
#26 AR-1254-1

R.T.: 0.000 min
 Exp R.T. : 5.389 min
 Response: 0
 Conc: N.D.



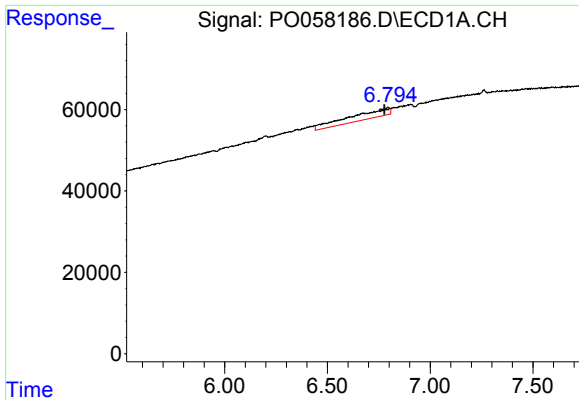
#27 AR-1254-2

R.T.: 6.436 min
 Delta R.T.: 0.023 min
 Response: 130982
 Conc: 40.07 ng/ml



#27 AR-1254-2

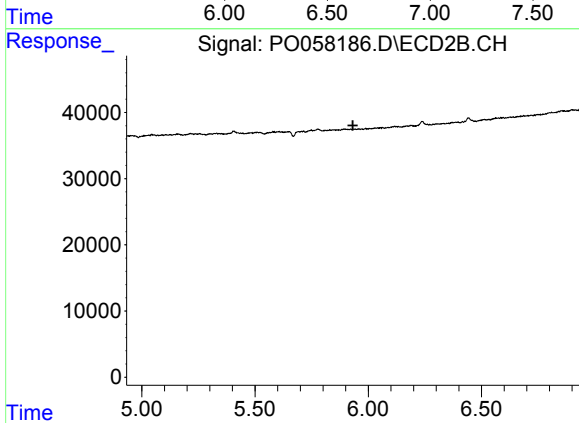
R.T.: 0.000 min
 Exp R.T. : 5.535 min
 Response: 0
 Conc: N.D.



#28 AR-1254-3

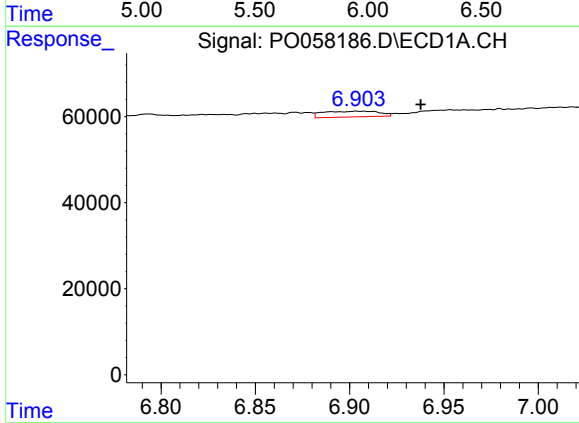
R.T.: 6.793 min
 Delta R.T.: 0.016 min
 Response: 295311
 Conc: 83.71 ng/ml

Instrument :
 ECD_O
 ClientSampled :
 I.BLK



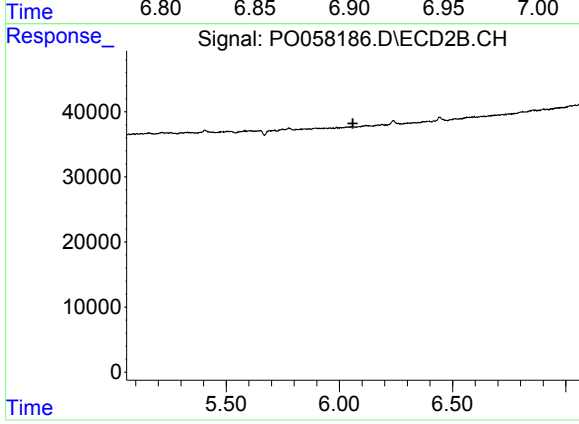
#28 AR-1254-3

R.T.: 0.000 min
 Exp R.T. : 5.932 min
 Response: 0
 Conc: N.D.



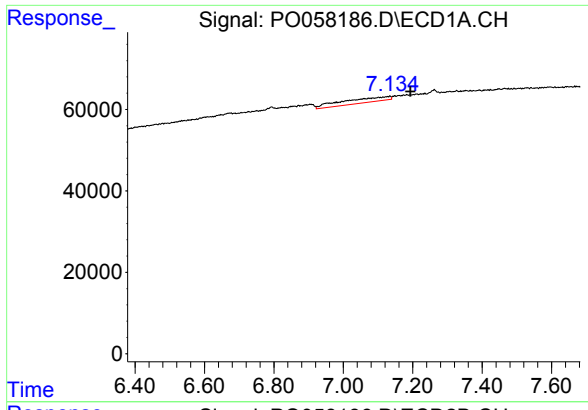
#31 AR-1260-1

R.T.: 6.904 min
 Delta R.T.: -0.033 min
 Response: 27525
 Conc: 11.01 ng/ml



#31 AR-1260-1

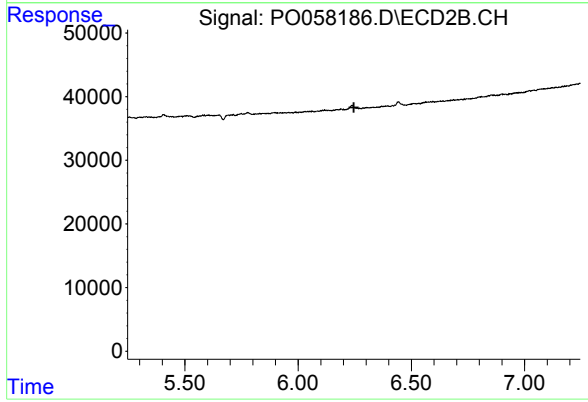
R.T.: 0.000 min
 Exp R.T. : 6.060 min
 Response: 0
 Conc: N.D.



#32 AR-1260-2

R.T.: 7.134 min
Delta R.T.: -0.060 min
Response: 115278
Conc: 32.79 ng/ml

Instrument :
ECD_O
ClientSampleId :
I.BLK



#32 AR-1260-2

R.T.: 0.000 min
Exp R.T. : 6.247 min
Response: 0
Conc: N.D.