

Data Path : Z:\pestpcbsrv\HPCHEM1\ECD\_P\Data\PP072021\  
 Data File : PP037443.D  
 Signal(s) : Signal #1: ECD1A.CH Signal #2: ECD2B.CH  
 Acq On : 20 Jul 2021 19:32  
 Operator : DD\AJ  
 Sample : M3096-01  
 Misc :  
 ALS Vial : 19 Sample Multiplier: 1

Instrument :  
 ECD\_O  
 ClientSampled :

Integration File signal 1: autoint1.e  
 Integration File signal 2: autoint2.e  
 Quant Time: Jul 21 02:13:04 2021  
 Quant Method : Z:\pestpcbsrv\HPCHEM1\ECD\_P\methods\PP070621.M  
 Quant Title : GC EXTRACTABLES  
 QLast Update : Wed Jul 07 08:32:32 2021  
 Response via : Initial Calibration  
 Integrator: ChemStation 6890 Scale Mode: Small noise peaks clipped

Volume Inj. : 2 µl  
 Signal #1 Phase : ZB-MR2 Signal #2 Phase: ZB-MR2  
 Signal #1 Info : 30Mx0.32mmx 0.50µ Signal #2 Info : 30M x 0.32mm x 0.25µm

	Compound	RT#1	RT#2	Resp#1	Resp#2	ng/ml	ng/ml
-----							
System Monitoring Compounds							
1)	SA Tetrachlo...	4.958	3.948	1002935	595229	22.067	21.752
2)	SA Decachlor...	10.989	9.241	818718	431434	17.784	15.500
Target Compounds							
6)	L1 AR-1016-4	0.000	5.463	0	4965	N.D.	8.226 #
8)	L2 AR-1221-1	5.208	0.000	36214	0	68.280	N.D. #
9)	L2 AR-1221-2	5.309	4.297	14905	11287	36.790	47.944 #
10)	L2 AR-1221-3	5.409	4.392	43778	20701	35.930	27.833
11)	L3 AR-1232-1	5.409	4.392	43778	20701	39.400	30.489
12)	L3 AR-1232-2	5.994	0.000	20526	0	34.423	N.D. #
14)	L3 AR-1232-4	0.000	5.512	0	2469	N.D.	8.955 #
19)	L4 AR-1242-4	0.000	5.512	0	2469	N.D.	4.791 #
20)	L4 AR-1242-5	7.262	6.069	20318	11403	19.537	16.753
22)	L5 AR-1248-2	0.000	5.463	0	4965	N.D.	6.053 #
23)	L5 AR-1248-3	0.000	5.512	0	2469	N.D.	2.885 #
24)	L5 AR-1248-4	7.222	0.000	39358	0	20.823	N.D. #
25)	L5 AR-1248-5	7.262	0.000	20318	0	10.856	N.D. #
26)	L6 AR-1254-1	7.195	6.069	64675	11403	36.001	7.681 #
27)	L6 AR-1254-2	7.424	0.000	49144	0	17.667	N.D. #
28)	L6 AR-1254-3	7.804	6.647	58778	8579	19.065	4.020 #
29)	L6 AR-1254-4	8.090	6.888	84791	10344	37.329	7.624 #
30)	L6 AR-1254-5	8.523	7.317	34631	28205	13.839	15.046
31)	L7 AR-1260-1	7.964	6.794	16757	20585	7.612	14.897 #
32)	L7 AR-1260-2	8.228	6.985	140449	16101	50.489	9.584 #
33)	L7 AR-1260-3	0.000	7.137	0	11888	N.D.	6.938 #
34)	L7 AR-1260-4	8.820	0.000	21466	0	8.727	N.D. #
35)	L7 AR-1260-5	9.157	7.873	23456	28515	5.083	8.841 #
36)	L8 AR-1262-1	0.000	7.317	0	28205	N.D.	27.162 #
37)	L8 AR-1262-2	9.157	7.873	23456	28515	4.466	8.197 #
38)	L8 AR-1262-3	9.491f	0.000	15000	0	3.915	N.D. #
39)	L8 AR-1262-4	9.538f	0.000	14250	0	4.849	N.D. #
41)	L9 AR-1268-1	9.491f	0.000	15000	0	2.470	N.D. #
42)	L9 AR-1268-2	9.538f	0.000	14250	0	2.479	N.D. #

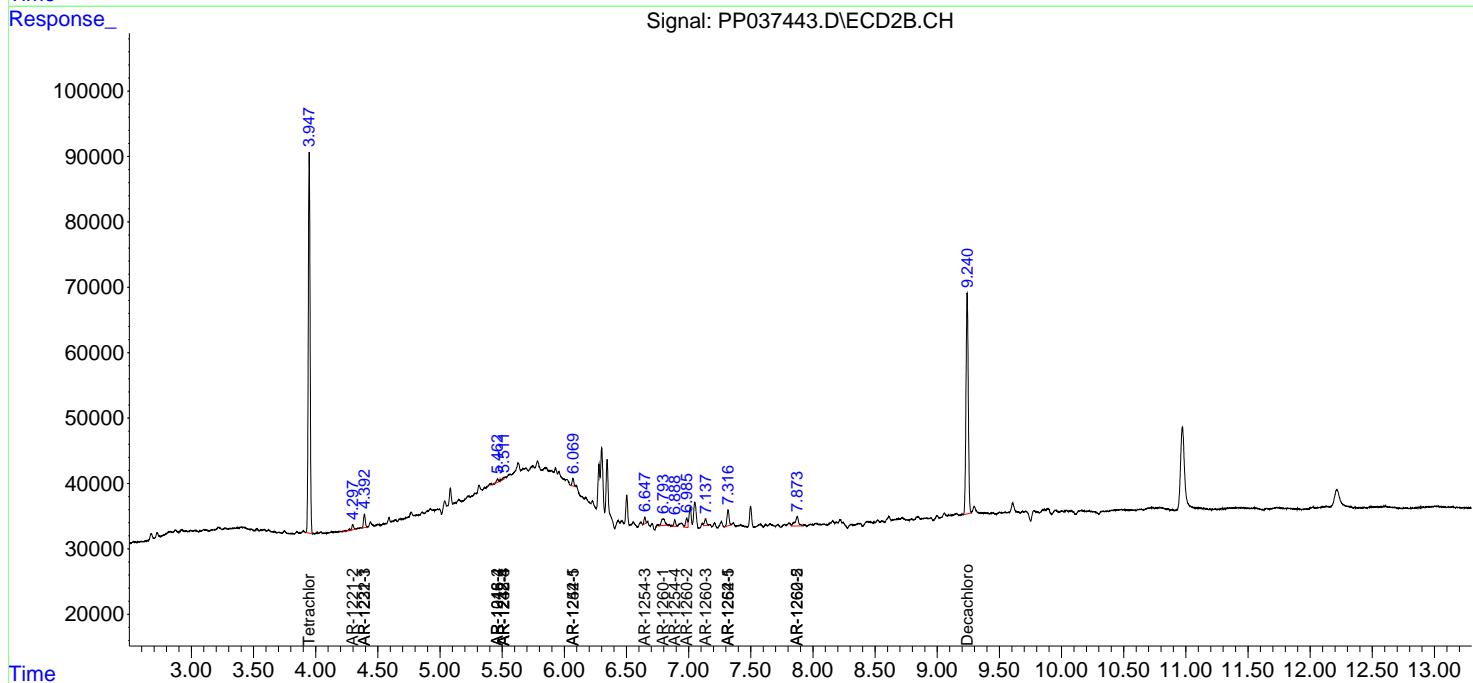
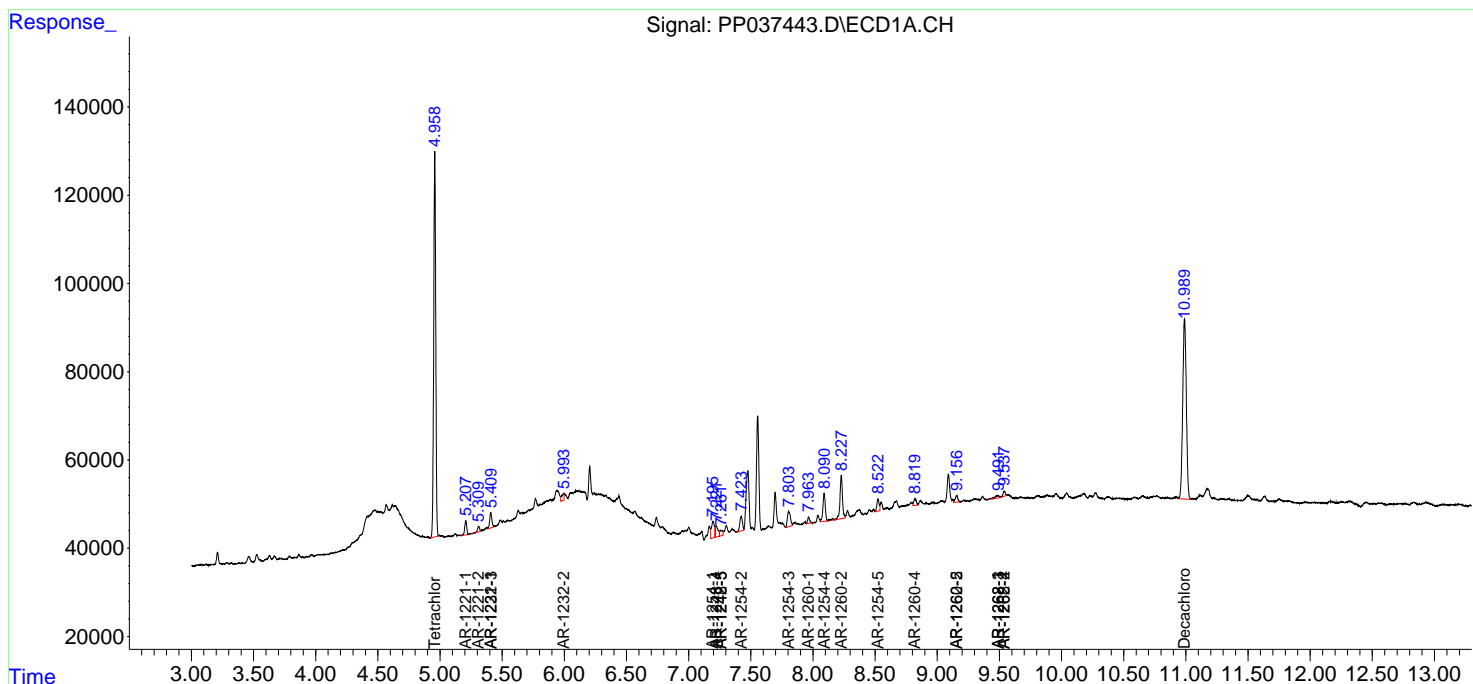
(f)=RT Delta > 1/2 Window (#)=Amounts differ by > 25% (m)=manual int.

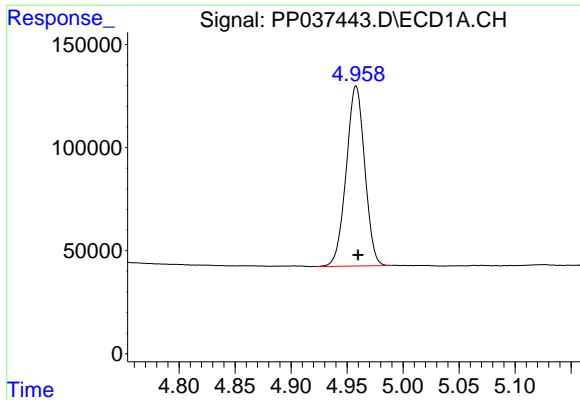
Data Path : Z:\pestpcbsrv\HPCHEM1\ECD\_P\Data\PP072021\  
 Data File : PP037443.D  
 Signal(s) : Signal #1: ECD1A.CH Signal #2: ECD2B.CH  
 Acq On : 20 Jul 2021 19:32  
 Operator : DD\AJ  
 Sample : M3096-01  
 Misc :  
 ALS Vial : 19 Sample Multiplier: 1

Instrument :  
 ECD\_O  
 ClientSampled :

Integration File signal 1: autoint1.e  
 Integration File signal 2: autoint2.e  
 Quant Time: Jul 21 02:13:04 2021  
 Quant Method : Z:\pestpcbsrv\HPCHEM1\ECD\_P\methods\PP070621.M  
 Quant Title : GC EXTRACTABLES  
 QLast Update : Wed Jul 07 08:32:32 2021  
 Response via : Initial Calibration  
 Integrator: ChemStation 6890 Scale Mode: Small noise peaks clipped

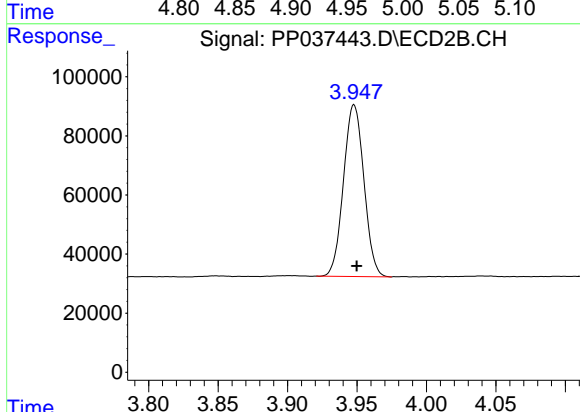
Volume Inj. : 2 µl  
 Signal #1 Phase : ZB-MR1 Signal #2 Phase: ZB-MR2  
 Signal #1 Info : 30Mx0.32mmx 0.50µ Signal #2 Info : 30M x 0.32mm x 0.25µm



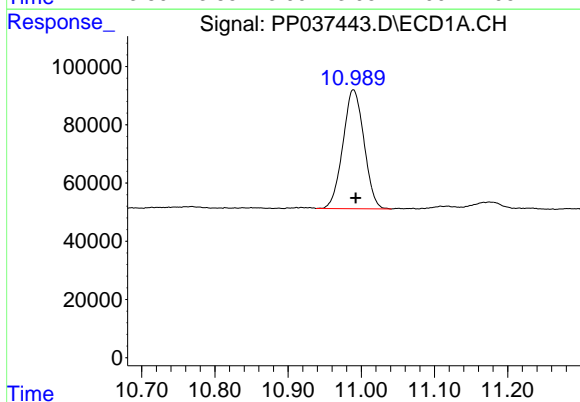


#1 Tetrachloro-m-xylene  
 R.T.: 4.958 min  
 Delta R.T.: -0.002 min  
 Response: 1002935  
 Conc: 22.07 ng/ml

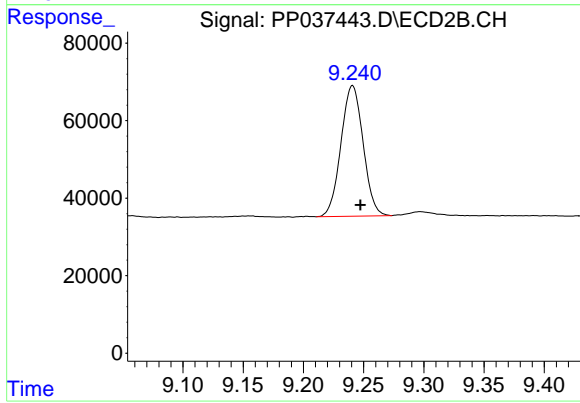
Instrument :  
 ECD\_O  
 ClientSampled :



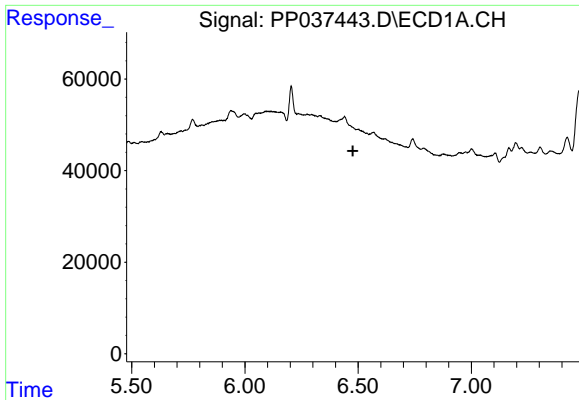
#1 Tetrachloro-m-xylene  
 R.T.: 3.948 min  
 Delta R.T.: -0.002 min  
 Response: 595229  
 Conc: 21.75 ng/ml



#2 Decachlorobiphenyl  
 R.T.: 10.989 min  
 Delta R.T.: -0.003 min  
 Response: 818718  
 Conc: 17.78 ng/ml



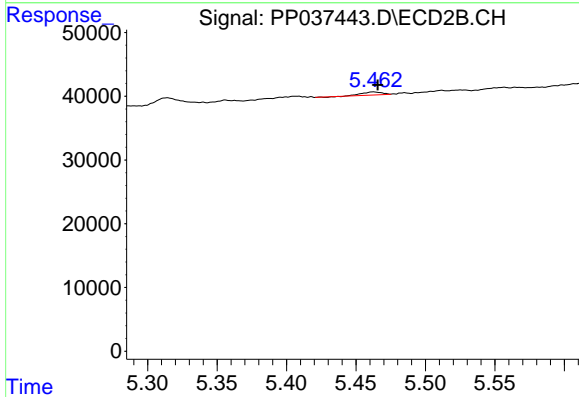
#2 Decachlorobiphenyl  
 R.T.: 9.241 min  
 Delta R.T.: -0.007 min  
 Response: 431434  
 Conc: 15.50 ng/ml



#6 AR-1016-4

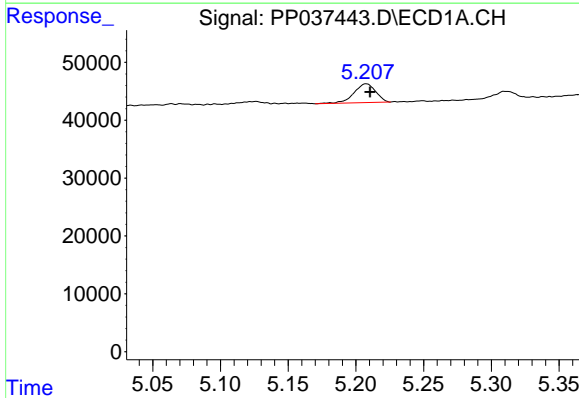
R.T.: 0.000 min  
 Exp R.T.: 6.477 min  
 Response: 0  
 Conc: N.D.

Instrument :  
 ECD\_O  
 ClientSampleId :



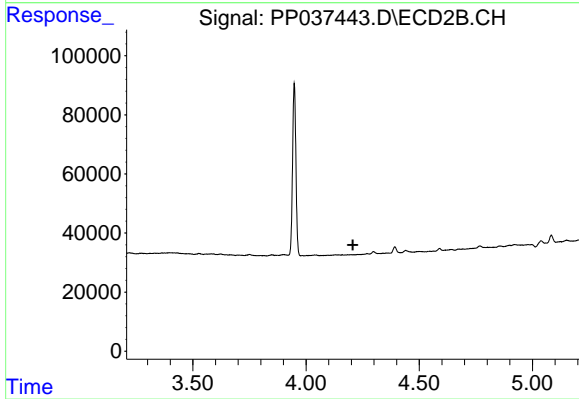
#6 AR-1016-4

R.T.: 5.463 min  
 Delta R.T.: -0.003 min  
 Response: 4965  
 Conc: 8.23 ng/ml



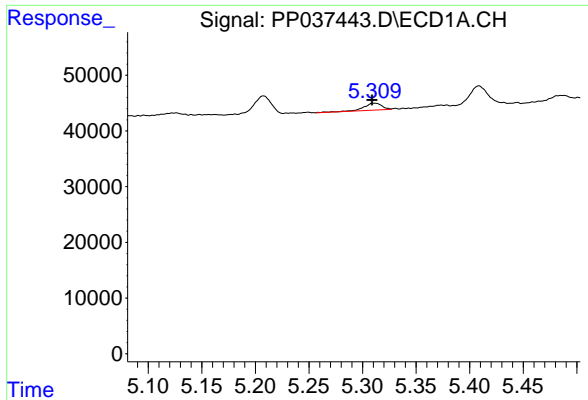
#8 AR-1221-1

R.T.: 5.208 min  
 Delta R.T.: -0.003 min  
 Response: 36214  
 Conc: 68.28 ng/ml



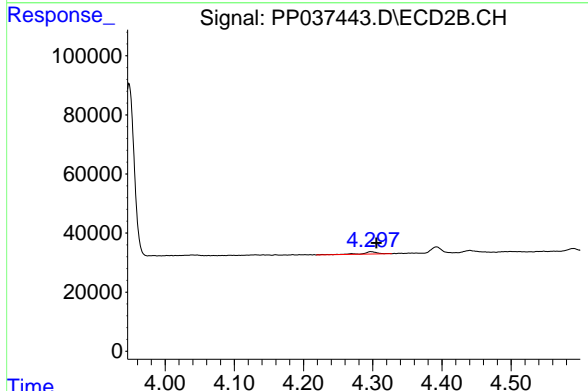
#8 AR-1221-1

R.T.: 0.000 min  
 Exp R.T.: 4.207 min  
 Response: 0  
 Conc: N.D.

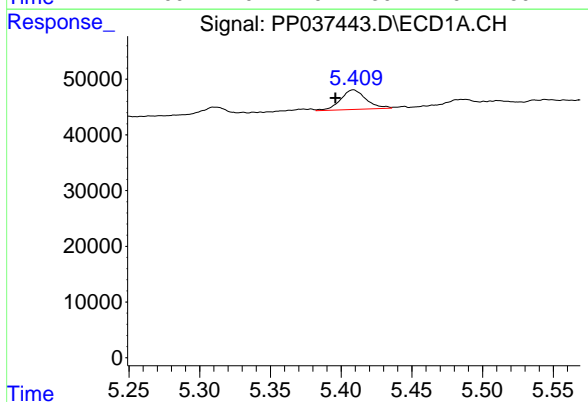


#9 AR-1221-2  
 R.T.: 5.309 min  
 Delta R.T.: 0.000 min  
 Response: 14905  
 Conc: 36.79 ng/ml

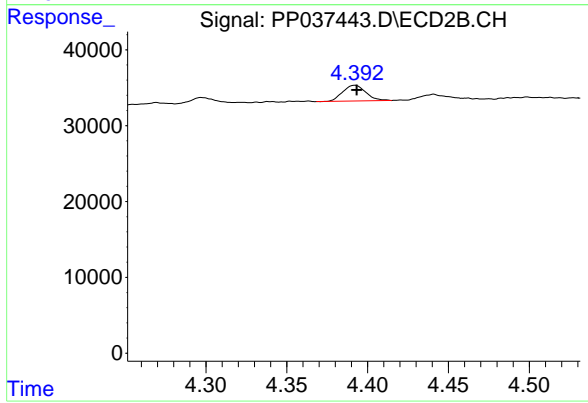
Instrument :  
 ECD\_O  
 ClientSampled :



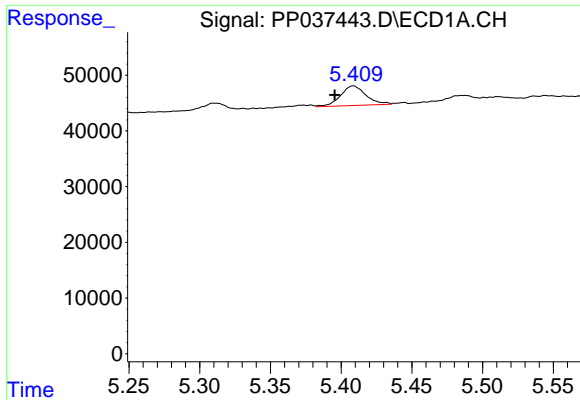
#9 AR-1221-2  
 R.T.: 4.297 min  
 Delta R.T.: -0.008 min  
 Response: 11287  
 Conc: 47.94 ng/ml



#10 AR-1221-3  
 R.T.: 5.409 min  
 Delta R.T.: 0.013 min  
 Response: 43778  
 Conc: 35.93 ng/ml

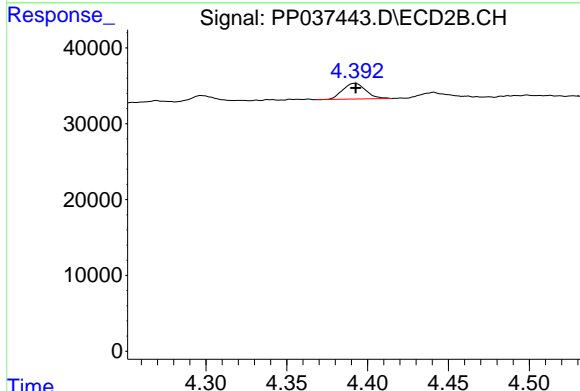


#10 AR-1221-3  
 R.T.: 4.392 min  
 Delta R.T.: -0.001 min  
 Response: 20701  
 Conc: 27.83 ng/ml

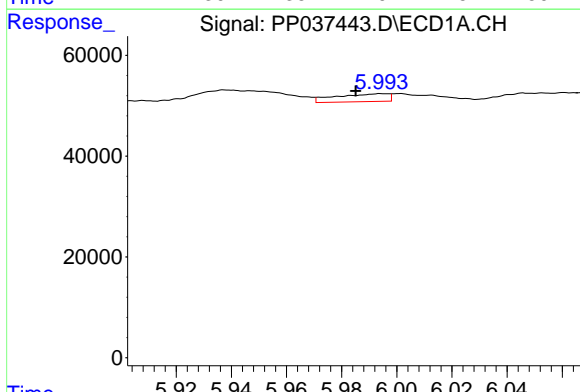


#11 AR-1232-1  
 R.T.: 5.409 min  
 Delta R.T.: 0.013 min  
 Response: 43778  
 Conc: 39.40 ng/ml

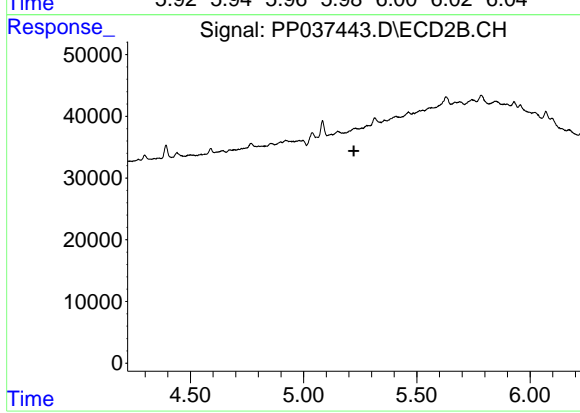
Instrument :  
 ECD\_O  
 ClientSampleId :



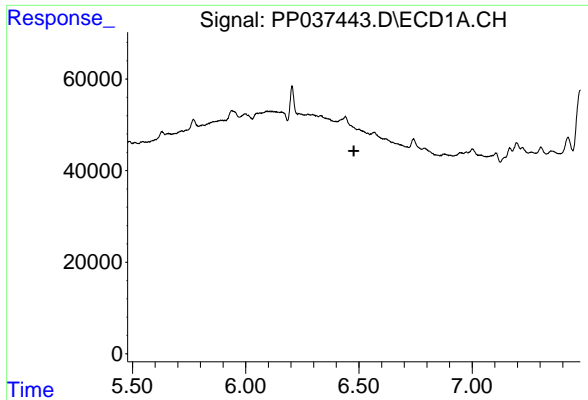
#11 AR-1232-1  
 R.T.: 4.392 min  
 Delta R.T.: 0.000 min  
 Response: 20701  
 Conc: 30.49 ng/ml



#12 AR-1232-2  
 R.T.: 5.994 min  
 Delta R.T.: 0.009 min  
 Response: 20526  
 Conc: 34.42 ng/ml



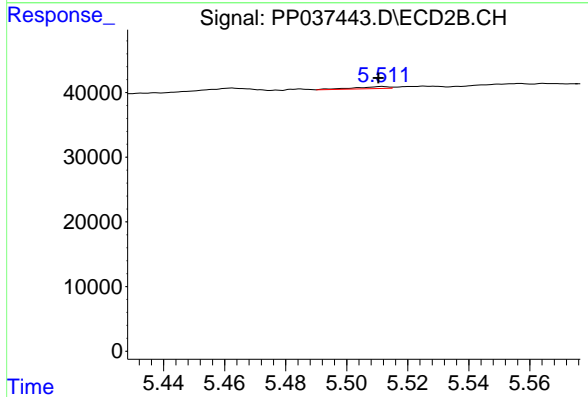
#12 AR-1232-2  
 R.T.: 0.000 min  
 Exp R.T. : 5.222 min  
 Response: 0  
 Conc: N.D.



#14 AR-1232-4

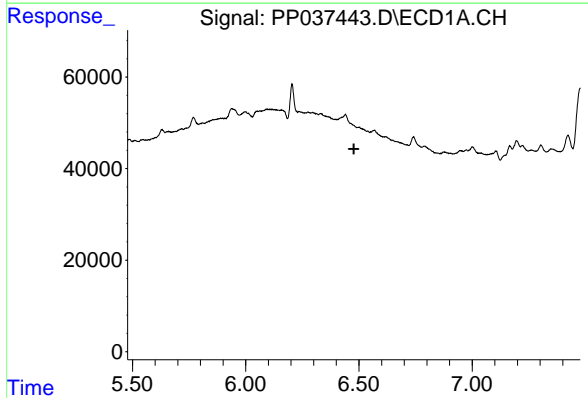
R.T.: 0.000 min  
 Exp R.T. : 6.478 min  
 Response: 0  
 Conc: N.D.

Instrument :  
 ECD\_O  
 ClientSampleId :



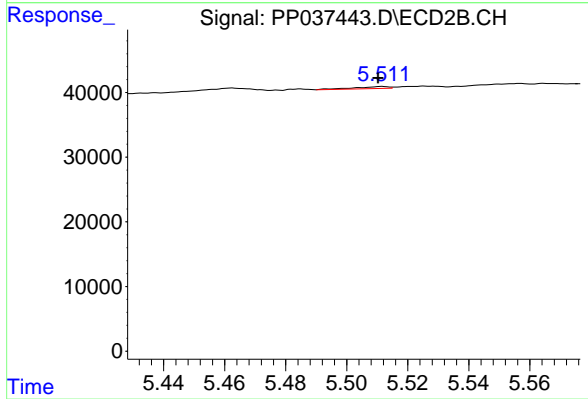
#14 AR-1232-4

R.T.: 5.512 min  
 Delta R.T.: 0.001 min  
 Response: 2469  
 Conc: 8.96 ng/ml



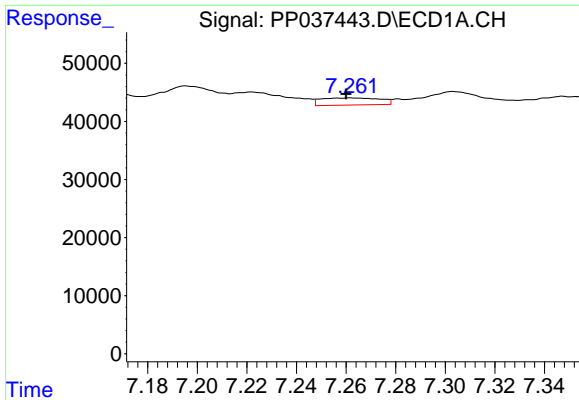
#19 AR-1242-4

R.T.: 0.000 min  
 Exp R.T. : 6.478 min  
 Response: 0  
 Conc: N.D.



#19 AR-1242-4

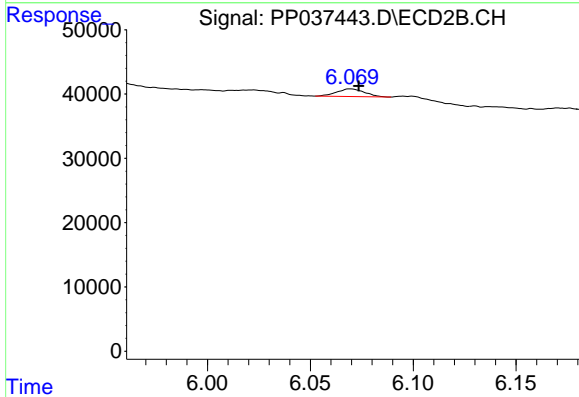
R.T.: 5.512 min  
 Delta R.T.: 0.001 min  
 Response: 2469  
 Conc: 4.79 ng/ml



#20 AR-1242-5

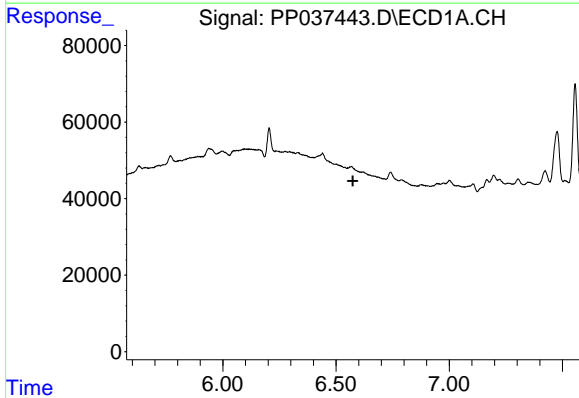
R.T.: 7.262 min  
 Delta R.T.: 0.002 min  
 Response: 20318  
 Conc: 19.54 ng/ml

Instrument :  
 ECD\_O  
 ClientSampled :



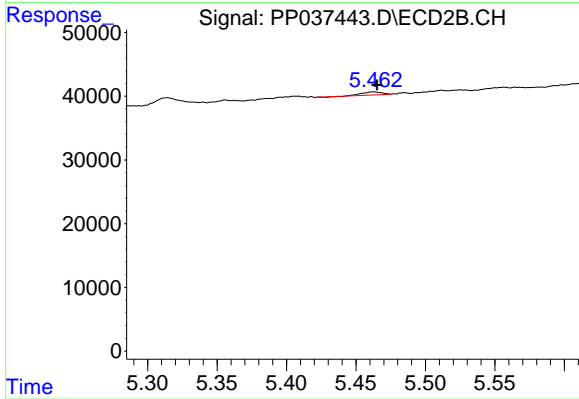
#20 AR-1242-5

R.T.: 6.069 min  
 Delta R.T.: -0.004 min  
 Response: 11403  
 Conc: 16.75 ng/ml



#22 AR-1248-2

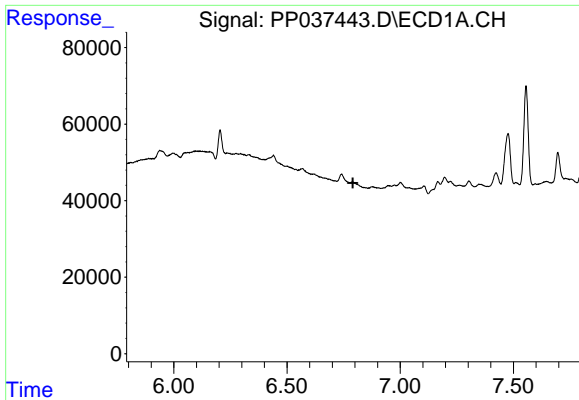
R.T.: 0.000 min  
 Exp R.T. : 6.574 min  
 Response: 0  
 Conc: N.D.



#22 AR-1248-2

R.T.: 5.463 min  
 Delta R.T.: -0.003 min  
 Response: 4965  
 Conc: 6.05 ng/ml

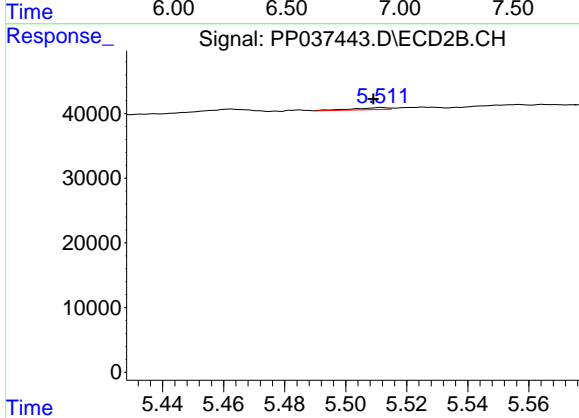




#23 AR-1248-3

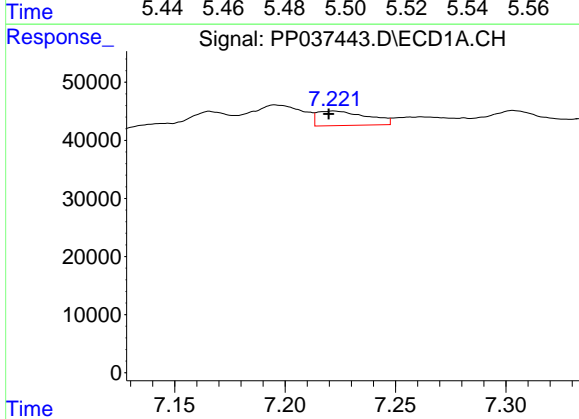
R.T.: 0.000 min  
 Exp R.T.: 6.791 min  
 Response: 0  
 Conc: N.D.

Instrument :  
 ECD\_O  
 ClientSampled :



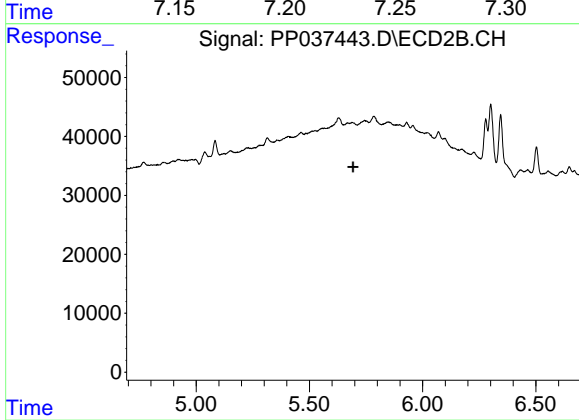
#23 AR-1248-3

R.T.: 5.512 min  
 Delta R.T.: 0.003 min  
 Response: 2469  
 Conc: 2.89 ng/ml



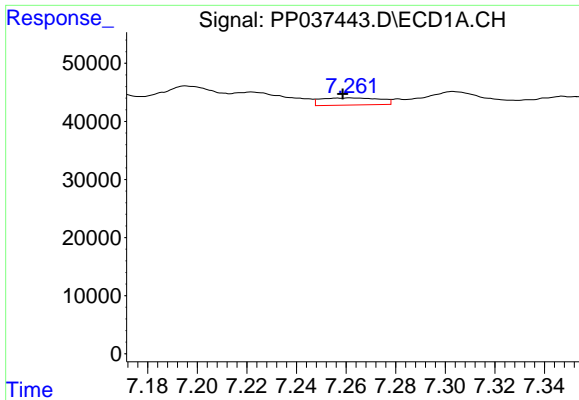
#24 AR-1248-4

R.T.: 7.222 min  
 Delta R.T.: 0.002 min  
 Response: 39358  
 Conc: 20.82 ng/ml



#24 AR-1248-4

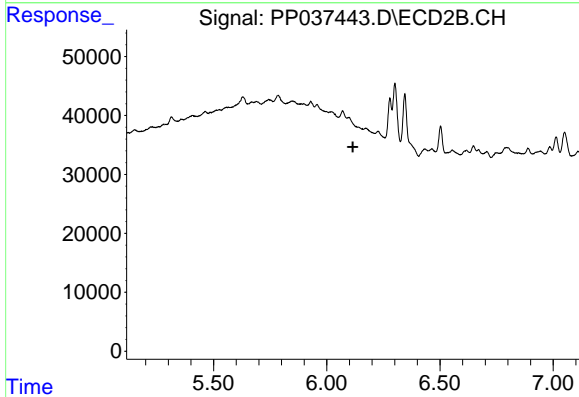
R.T.: 0.000 min  
 Exp R.T.: 5.692 min  
 Response: 0  
 Conc: N.D.



#25 AR-1248-5

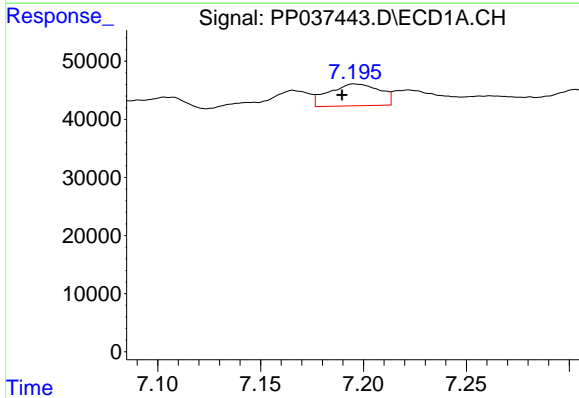
R.T.: 7.262 min  
 Delta R.T.: 0.003 min  
 Response: 20318  
 Conc: 10.86 ng/ml

Instrument :  
 ECD\_O  
 ClientSampleId :



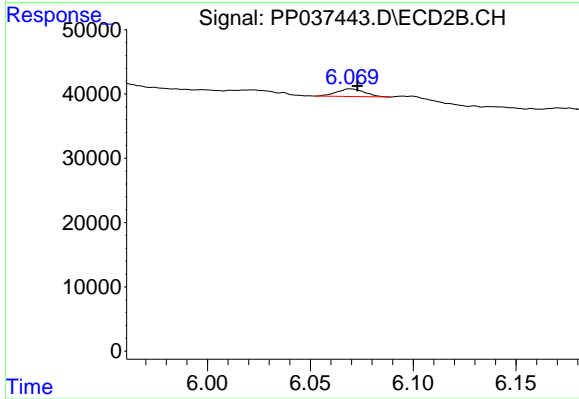
#25 AR-1248-5

R.T.: 0.000 min  
 Exp R.T. : 6.115 min  
 Response: 0  
 Conc: N.D.



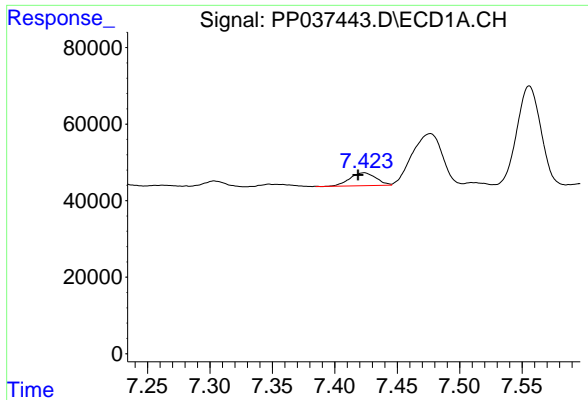
#26 AR-1254-1

R.T.: 7.195 min  
 Delta R.T.: 0.006 min  
 Response: 64675  
 Conc: 36.00 ng/ml



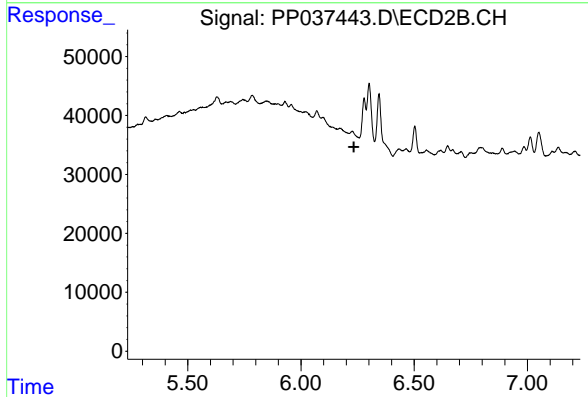
#26 AR-1254-1

R.T.: 6.069 min  
 Delta R.T.: -0.003 min  
 Response: 11403  
 Conc: 7.68 ng/ml

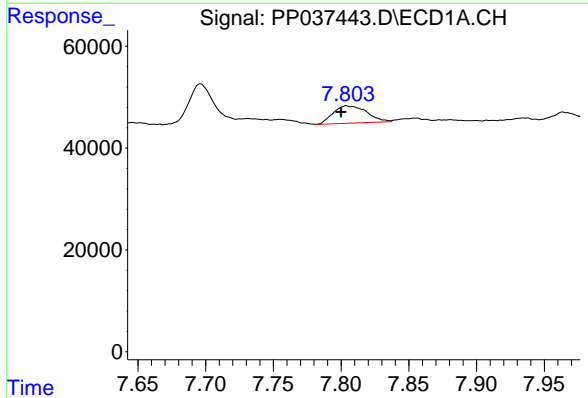


#27 AR-1254-2  
 R.T.: 7.424 min  
 Delta R.T.: 0.005 min  
 Response: 49144  
 Conc: 17.67 ng/ml

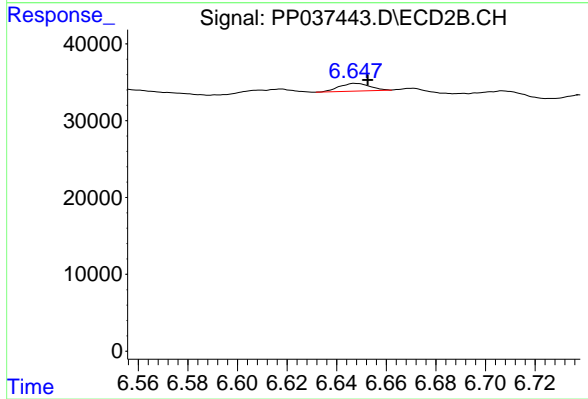
Instrument :  
 ECD\_O  
 ClientSampled :



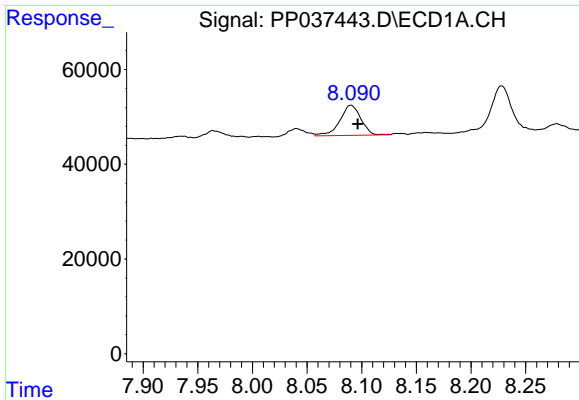
#27 AR-1254-2  
 R.T.: 0.000 min  
 Exp R.T. : 6.234 min  
 Response: 0  
 Conc: N.D.



#28 AR-1254-3  
 R.T.: 7.804 min  
 Delta R.T.: 0.004 min  
 Response: 58778  
 Conc: 19.06 ng/ml

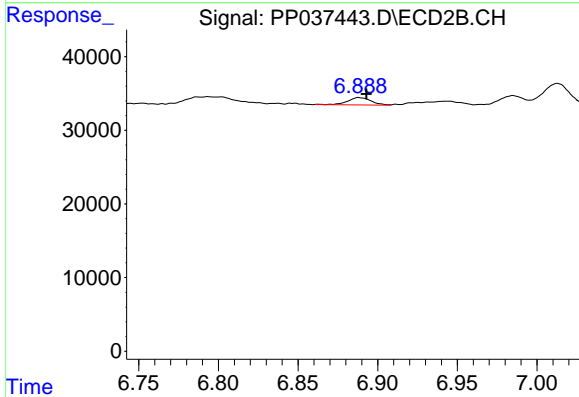


#28 AR-1254-3  
 R.T.: 6.647 min  
 Delta R.T.: -0.005 min  
 Response: 8579  
 Conc: 4.02 ng/ml

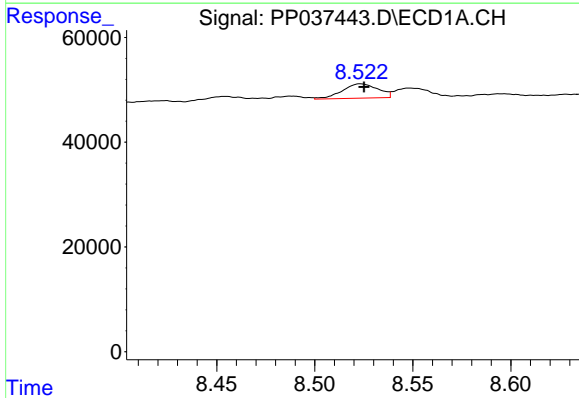


#29 AR-1254-4  
 R.T.: 8.090 min  
 Delta R.T.: -0.006 min  
 Response: 84791  
 Conc: 37.33 ng/ml

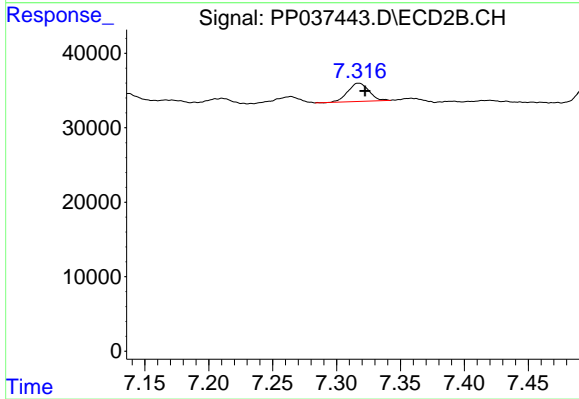
Instrument :  
 ECD\_O  
 ClientSampleId :



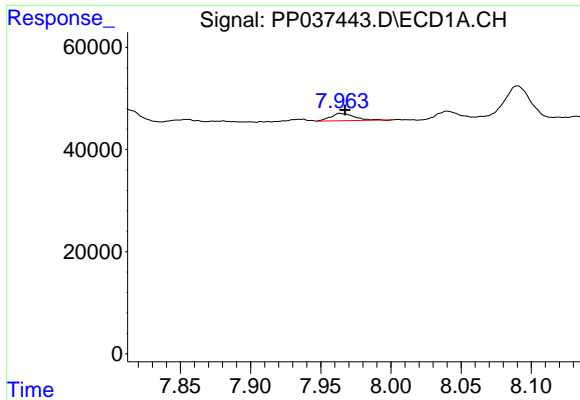
#29 AR-1254-4  
 R.T.: 6.888 min  
 Delta R.T.: -0.005 min  
 Response: 10344  
 Conc: 7.62 ng/ml



#30 AR-1254-5  
 R.T.: 8.523 min  
 Delta R.T.: -0.002 min  
 Response: 34631  
 Conc: 13.84 ng/ml

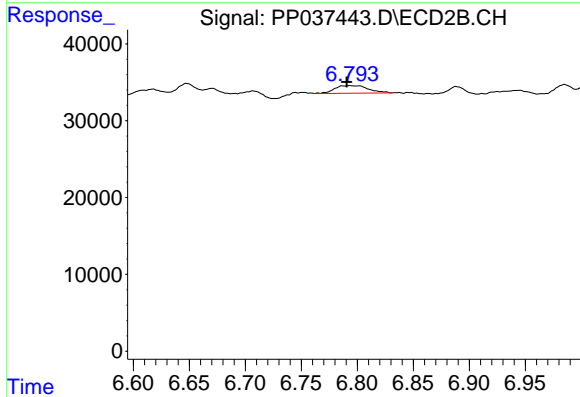


#30 AR-1254-5  
 R.T.: 7.317 min  
 Delta R.T.: -0.005 min  
 Response: 28205  
 Conc: 15.05 ng/ml

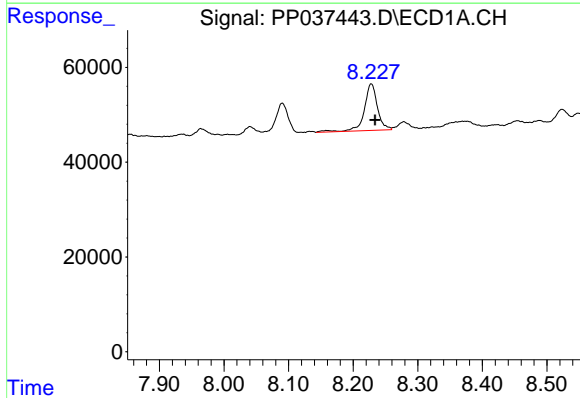


#31 AR-1260-1  
 R.T.: 7.964 min  
 Delta R.T.: -0.003 min  
 Response: 16757  
 Conc: 7.61 ng/ml

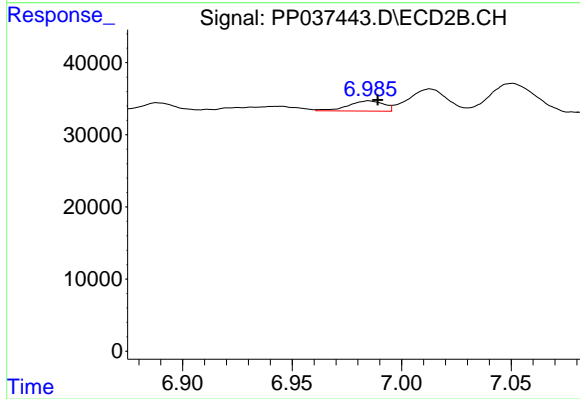
Instrument :  
 ECD\_O  
 ClientSampleId :



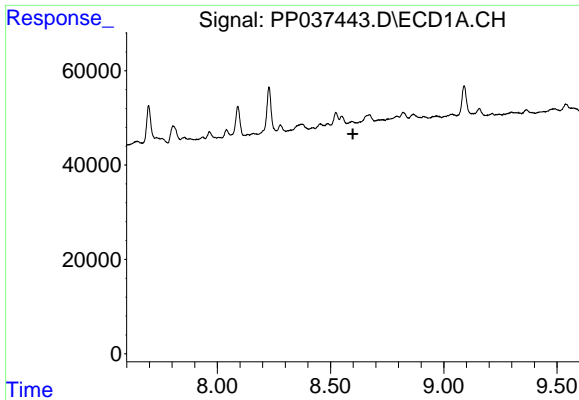
#31 AR-1260-1  
 R.T.: 6.794 min  
 Delta R.T.: 0.003 min  
 Response: 20585  
 Conc: 14.90 ng/ml



#32 AR-1260-2  
 R.T.: 8.228 min  
 Delta R.T.: -0.006 min  
 Response: 140449  
 Conc: 50.49 ng/ml



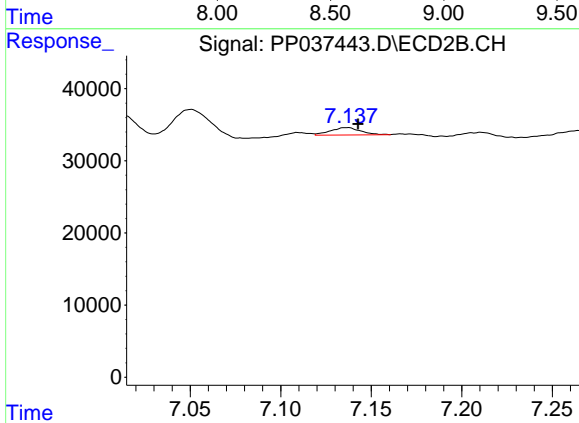
#32 AR-1260-2  
 R.T.: 6.985 min  
 Delta R.T.: -0.004 min  
 Response: 16101  
 Conc: 9.58 ng/ml



#33 AR-1260-3

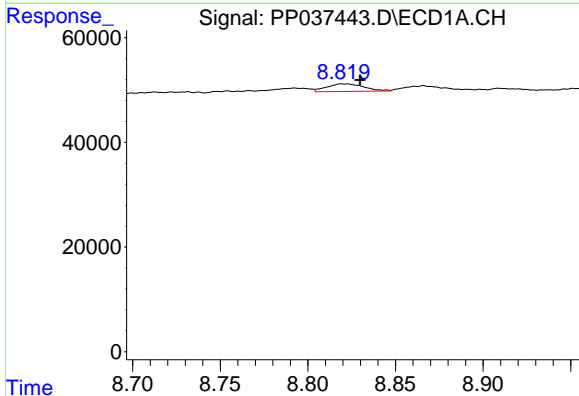
R.T.: 0.000 min  
 Exp R.T.: 8.599 min  
 Response: 0  
 Conc: N.D.

Instrument :  
 ECD\_O  
 ClientSampled :



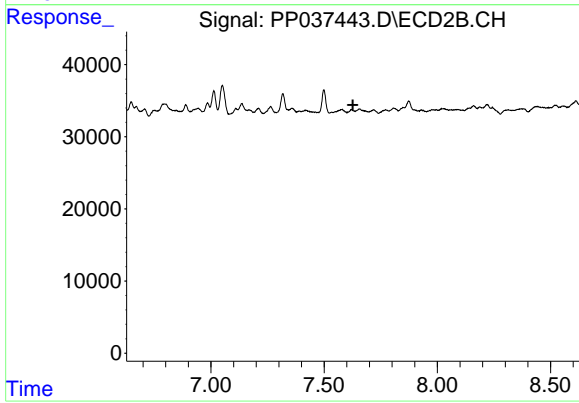
#33 AR-1260-3

R.T.: 7.137 min  
 Delta R.T.: -0.006 min  
 Response: 11888  
 Conc: 6.94 ng/ml



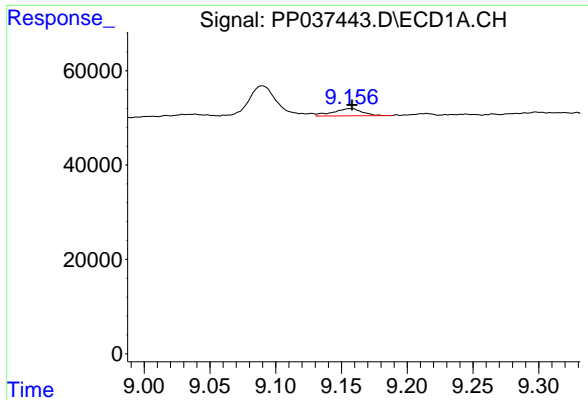
#34 AR-1260-4

R.T.: 8.820 min  
 Delta R.T.: -0.010 min  
 Response: 21466  
 Conc: 8.73 ng/ml



#34 AR-1260-4

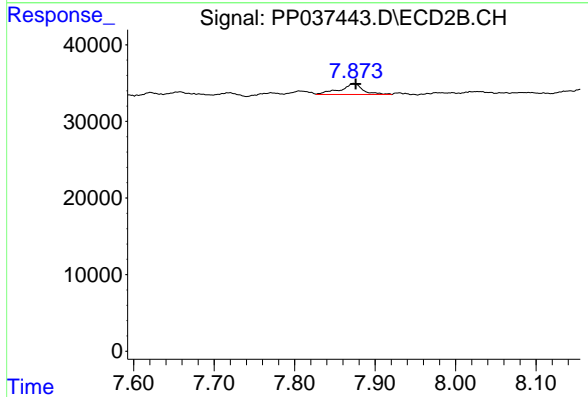
R.T.: 0.000 min  
 Exp R.T.: 7.627 min  
 Response: 0  
 Conc: N.D.



#35 AR-1260-5

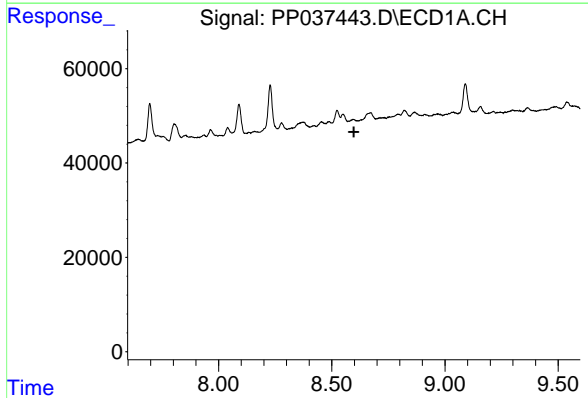
R.T.: 9.157 min  
 Delta R.T.: -0.001 min  
 Response: 23456  
 Conc: 5.08 ng/ml

Instrument :  
 ECD\_O  
 ClientSampleId :



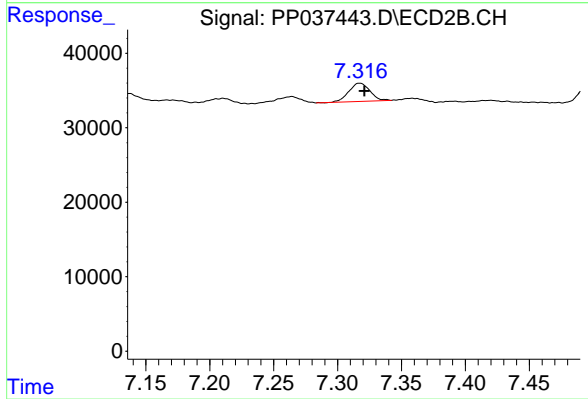
#35 AR-1260-5

R.T.: 7.873 min  
 Delta R.T.: -0.002 min  
 Response: 28515  
 Conc: 8.84 ng/ml



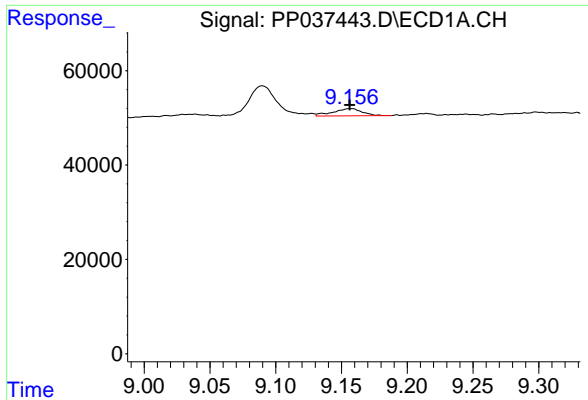
#36 AR-1262-1

R.T.: 0.000 min  
 Exp R.T. : 8.598 min  
 Response: 0  
 Conc: N.D.



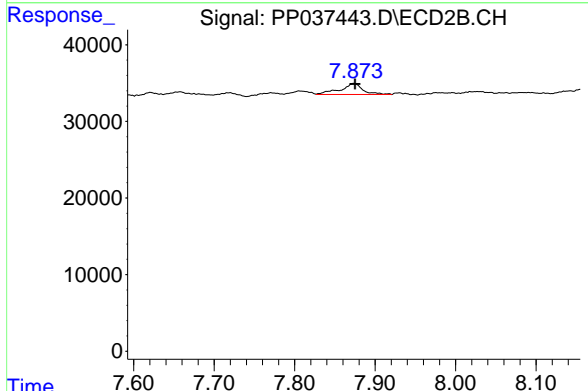
#36 AR-1262-1

R.T.: 7.317 min  
 Delta R.T.: -0.003 min  
 Response: 28205  
 Conc: 27.16 ng/ml

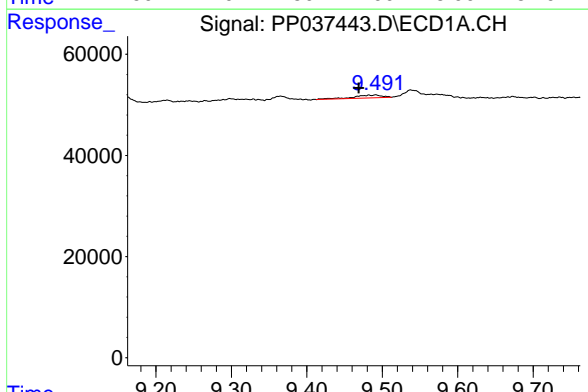


#37 AR-1262-2  
 R.T.: 9.157 min  
 Delta R.T.: 0.000 min  
 Response: 23456  
 Conc: 4.47 ng/ml

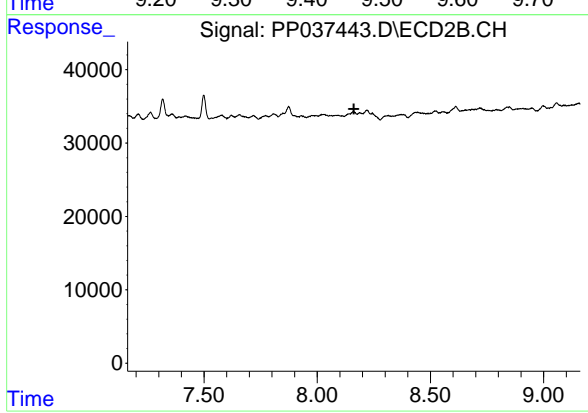
Instrument :  
 ECD\_O  
 ClientSampleId :



#37 AR-1262-2  
 R.T.: 7.873 min  
 Delta R.T.: -0.002 min  
 Response: 28515  
 Conc: 8.20 ng/ml

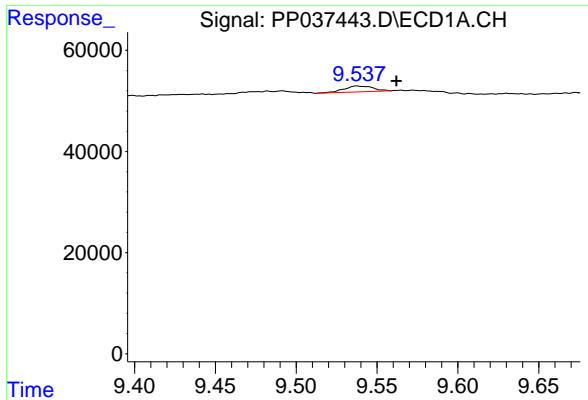


#38 AR-1262-3  
 R.T.: 9.491 min  
 Delta R.T.: 0.023 min  
 Response: 15000  
 Conc: 3.91 ng/ml



#38 AR-1262-3  
 R.T.: 0.000 min  
 Exp R.T. : 8.162 min  
 Response: 0  
 Conc: N.D.

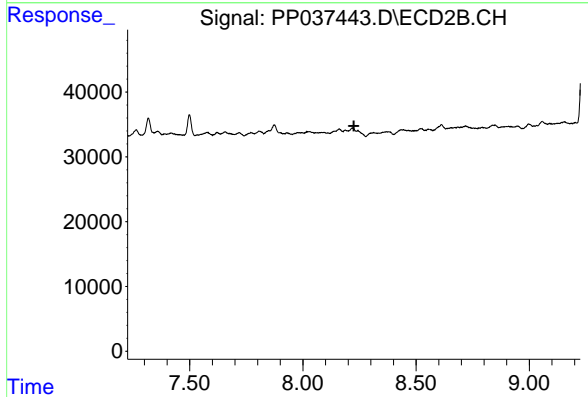




#39 AR-1262-4

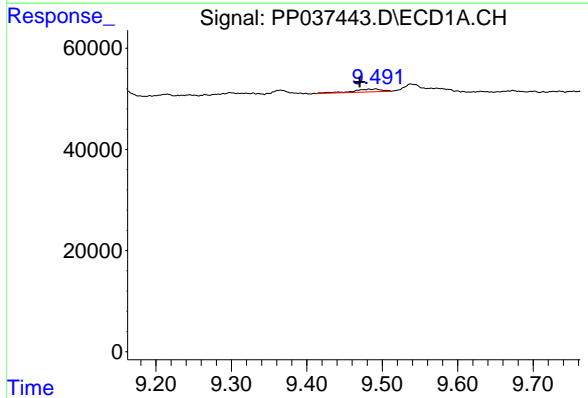
R.T.: 9.538 min  
 Delta R.T.: -0.024 min  
 Response: 14250  
 Conc: 4.85 ng/ml

Instrument :  
 ECD\_O  
 ClientSampleId :



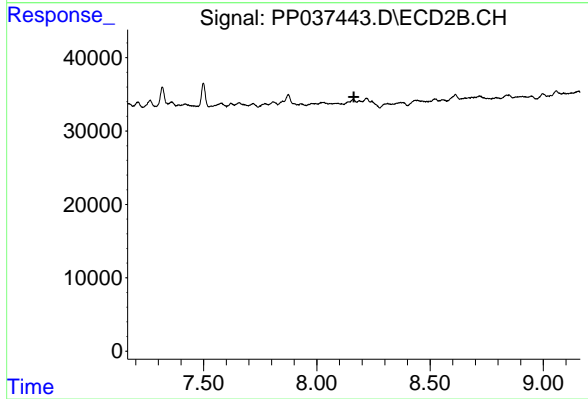
#39 AR-1262-4

R.T.: 0.000 min  
 Exp R.T. : 8.225 min  
 Response: 0  
 Conc: N.D.



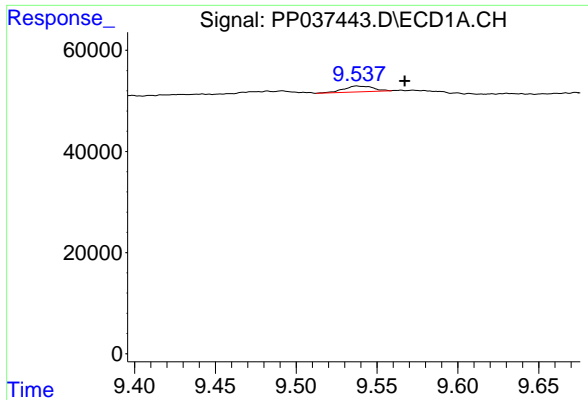
#41 AR-1268-1

R.T.: 9.491 min  
 Delta R.T.: 0.021 min  
 Response: 15000  
 Conc: 2.47 ng/ml



#41 AR-1268-1

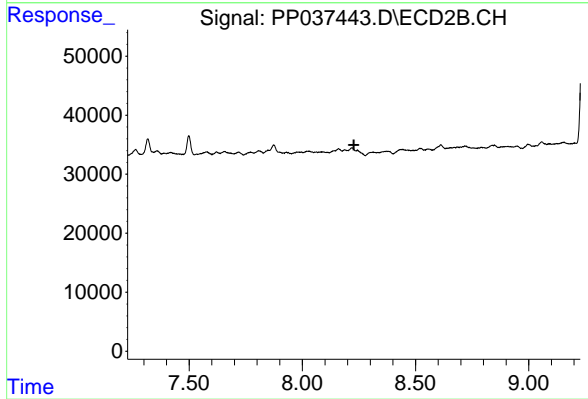
R.T.: 0.000 min  
 Exp R.T. : 8.163 min  
 Response: 0  
 Conc: N.D.



#42 AR-1268-2

R.T.: 9.538 min  
Delta R.T.: -0.030 min  
Response: 14250  
Conc: 2.48 ng/ml

Instrument :  
ECD\_O  
ClientSampleId :



#42 AR-1268-2

R.T.: 0.000 min  
Exp R.T. : 8.228 min  
Response: 0  
Conc: N.D.