

Data Path : Z:\pestpcbsrv\HPCHEM1\ECD\_P\Data\PP072021\  
 Data File : PP037454.D  
 Signal(s) : Signal #1: ECD1A.CH Signal #2: ECD2B.CH  
 Acq On : 20 Jul 2021 22:55  
 Operator : DD\AJ  
 Sample : AR1254CCC500  
 Misc :  
 ALS Vial : 6 Sample Multiplier: 1

Instrument :  
 ECD\_O  
 ClientSampled :

Integration File signal 1: autoint1.e  
 Integration File signal 2: autoint2.e  
 Quant Time: Jul 21 02:17:14 2021  
 Quant Method : Z:\pestpcbsrv\HPCHEM1\ECD\_P\methods\PP070621.M  
 Quant Title : GC EXTRACTABLES  
 QLast Update : Wed Jul 07 08:32:32 2021  
 Response via : Initial Calibration  
 Integrator: ChemStation 6890 Scale Mode: Small noise peaks clipped

Volume Inj. : 2 µl  
 Signal #1 Phase : ZB-MR1 Signal #2 Phase: ZB-MR2  
 Signal #1 Info : 30Mx0.32mmx 0.50µ Signal #2 Info : 30M x 0.32mm x 0.25µm

Compound	RT#1	RT#2	Resp#1	Resp#2	ng/ml	ng/ml
System Monitoring Compounds						
1) SA Tetrachlo...	4.958	3.948	2586101	1540671	56.901	56.302
2) SA Decachlor...	10.989	9.241	2294336	1307589	49.838	46.977
Target Compounds						
3) L1 AR-1016-1	6.277	5.198	21154	13064	12.174	12.642
4) L1 AR-1016-2	6.304	5.219	35693	10649	14.277	7.437 #
5) L1 AR-1016-3	6.367	0.000	12778	0	8.023	N.D. #
6) L1 AR-1016-4	0.000	5.462	0	303755	N.D.	503.248 #
7) L1 AR-1016-5	6.790	5.689	341720	222090	270.133	287.610
9) L2 AR-1221-2	5.310	4.298	33645	20558	83.048	87.326
12) L3 AR-1232-2	5.982	5.219	13554	10649	22.731	17.013 #
13) L3 AR-1232-3	6.304	0.000	35693	0	32.618	N.D. #
14) L3 AR-1232-4	0.000	5.505	0	87742	N.D.	318.241 #
15) L3 AR-1232-5	6.573	5.689	537686	222090	1398.087	747.098 #
16) L4 AR-1242-1	6.277	5.198	21154	13064	16.596	17.333
17) L4 AR-1242-2	6.304	5.219	35693	10649	19.686	10.349 #
18) L4 AR-1242-3	6.367	0.000	12778	0	11.110	N.D. #
19) L4 AR-1242-4	0.000	5.505	0	87742	N.D.	170.249 #
20) L4 AR-1242-5	7.260	6.069	451555	763068	434.204	1121.042 #
21) L5 AR-1248-1	6.277	5.198	21154	13064	20.155	20.701
22) L5 AR-1248-2	6.573	5.462	537686	303755	362.188	370.311
23) L5 AR-1248-3	6.790	5.505	341720	87742	206.877	102.530 #
24) L5 AR-1248-4	7.218	5.689	577918	222090	305.759	218.233 #
25) L5 AR-1248-5	7.260	6.092f	451555	293133	241.266	276.346
26) L6 AR-1254-1	7.189	6.069	1380618	763068	768.507	513.999 #
27) L6 AR-1254-2	7.418	6.229	1534854	642460	551.773	494.579
28) L6 AR-1254-3	7.800	6.648	1612982	1062379	523.183	497.828
29) L6 AR-1254-4	8.095	6.888	1148079	681406	505.441	502.241
30) L6 AR-1254-5	8.524	7.317	1257343	955752	502.456	509.833
31) L7 AR-1260-1	7.966	6.787	568543	512625	258.260	370.980 #
32) L7 AR-1260-2	8.231	6.984	722529	427509	259.737	254.480
33) L7 AR-1260-3	8.585	7.136	175230	455950	86.697	266.108 #
34) L7 AR-1260-4	8.821	7.622	539596	47022	219.365	34.587 #
35) L7 AR-1260-5	9.155	7.871	191459	97345	41.492	30.181 #
36) L8 AR-1262-1	8.585	7.317	175230	955752	60.165	920.416 #
37) L8 AR-1262-2	9.155	7.871	191459	97345	36.456	27.984
38) L8 AR-1262-3	9.493f	8.136f	141750	116566	36.995	82.791 #
39) L8 AR-1262-4	0.000	8.217	0	110964	N.D.	41.669 #
41) L9 AR-1268-1	9.493f	8.136f	141750	116566	23.342	29.251 #
42) L9 AR-1268-2	0.000	8.217	0	110964	N.D.	29.981 #
45) L9 AR-1268-5	10.647	0.000	17921	0	1.132	N.D. #

Data Path : Z:\pestpcbsrv\HPCHEM1\ECD\_P\Data\PP072021\  
Data File : PP037454.D  
Signal(s) : Signal #1: ECD1A.CH Signal #2: ECD2B.CH  
Acq On : 20 Jul 2021 22:55  
Operator : DD\AJ  
Sample : AR1254CCC500  
Misc :  
ALS Vial : 6 Sample Multiplier: 1

Instrument :  
ECD\_O  
ClientSampleId :

Integration File signal 1: autoint1.e  
Integration File signal 2: autoint2.e  
Quant Time: Jul 21 02:17:14 2021  
Quant Method : Z:\pestpcbsrv\HPCHEM1\ECD\_P\methods\PP070621.M  
Quant Title : GC EXTRACTABLES  
QLast Update : Wed Jul 07 08:32:32 2021  
Response via : Initial Calibration  
Integrator: ChemStation 6890 Scale Mode: Small noise peaks clipped

Volume Inj. : 2 µl  
Signal #1 Phase : ZB-MR1 Signal #2 Phase: ZB-MR2  
Signal #1 Info : 30Mx0.32mmx 0.50µ Signal #2 Info : 30M x 0.32mm x 0.25µm

Compound	RT#1	RT#2	Resp#1	Resp#2	ng/ml	ng/ml
----------	------	------	--------	--------	-------	-------

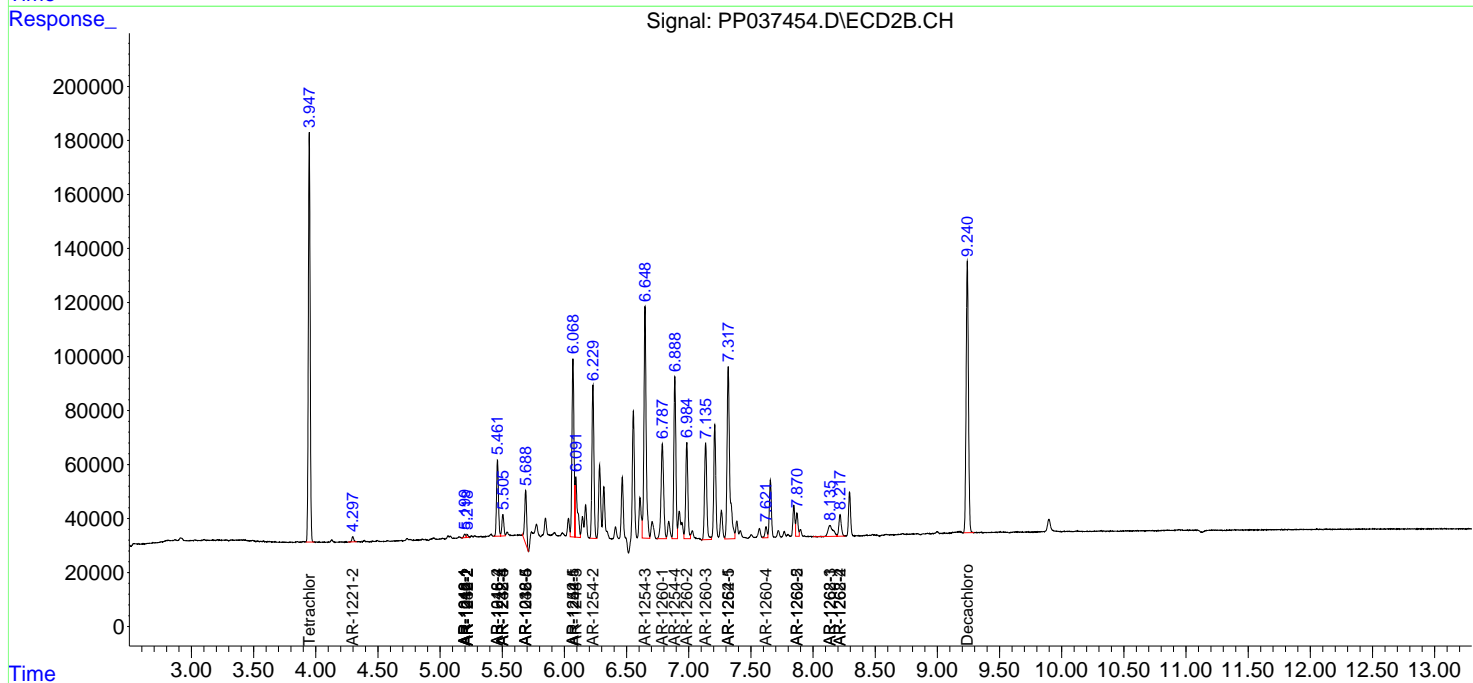
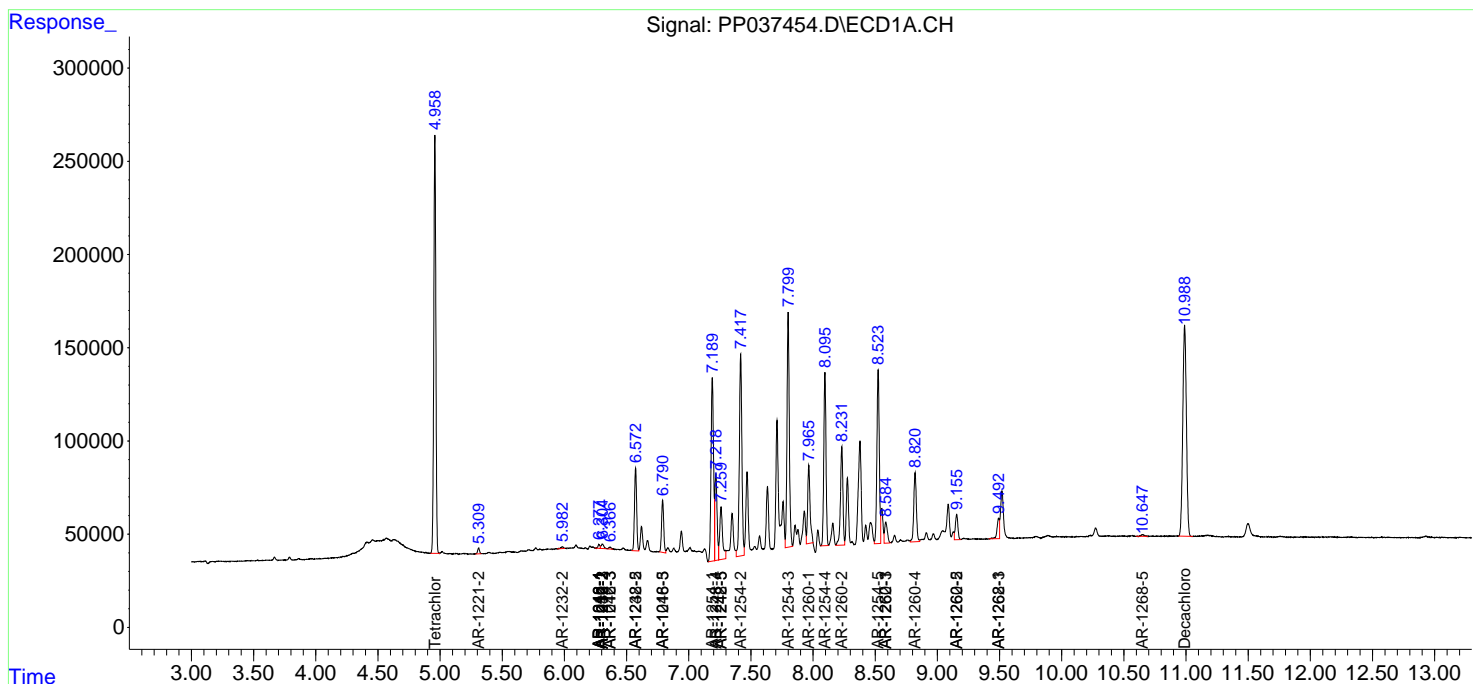
-----  
(f)=RT Delta > 1/2 Window (#)=Amounts differ by > 25% (m)=manual int.

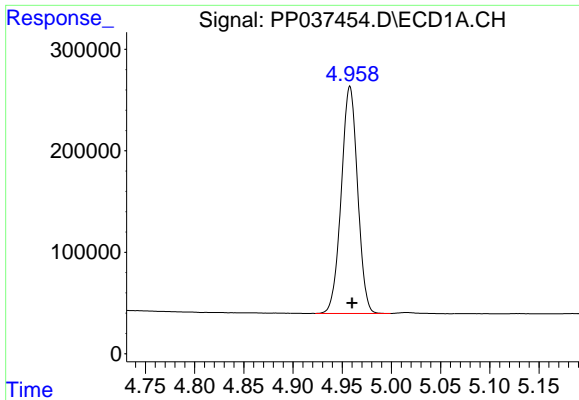
Data Path : Z:\pestpcbsrv\HPCHEM1\ECD\_P\Data\PP072021\  
 Data File : PP037454.D  
 Signal(s) : Signal #1: ECD1A.CH Signal #2: ECD2B.CH  
 Acq On : 20 Jul 2021 22:55  
 Operator : DD\AJ  
 Sample : AR1254CCC500  
 Misc :  
 ALS Vial : 6 Sample Multiplier: 1

Instrument :  
 ECD\_O  
 ClientSampled :

Integration File signal 1: autoint1.e  
 Integration File signal 2: autoint2.e  
 Quant Time: Jul 21 02:17:14 2021  
 Quant Method : Z:\pestpcbsrv\HPCHEM1\ECD\_P\methods\PP070621.M  
 Quant Title : GC EXTRACTABLES  
 QLast Update : Wed Jul 07 08:32:32 2021  
 Response via : Initial Calibration  
 Integrator: ChemStation 6890 Scale Mode: Small noise peaks clipped

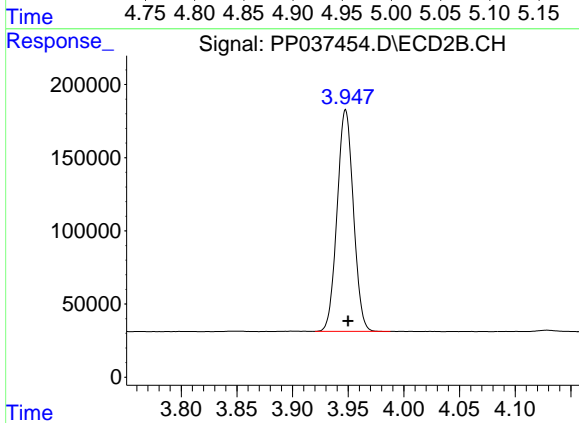
Volume Inj. : 2 µl  
 Signal #1 Phase : ZB-MR1 Signal #2 Phase: ZB-MR2  
 Signal #1 Info : 30Mx0.32mmx 0.50µ Signal #2 Info : 30M x 0.32mm x 0.25µm



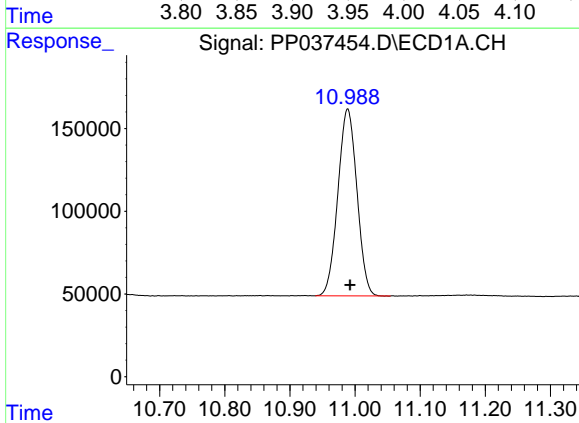


#1 Tetrachloro-m-xylene  
 R.T.: 4.958 min  
 Delta R.T.: -0.002 min  
 Response: 2586101  
 Conc: 56.90 ng/ml

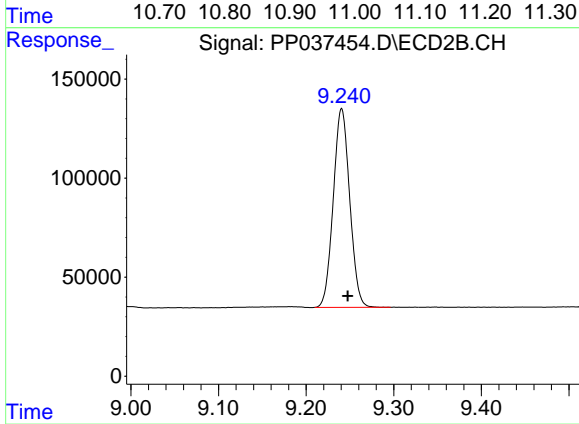
Instrument :  
 ECD\_O  
 ClientSampleId :



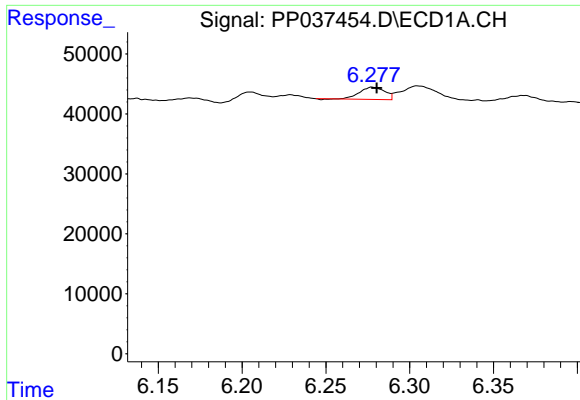
#1 Tetrachloro-m-xylene  
 R.T.: 3.948 min  
 Delta R.T.: -0.002 min  
 Response: 1540671  
 Conc: 56.30 ng/ml



#2 Decachlorobiphenyl  
 R.T.: 10.989 min  
 Delta R.T.: -0.004 min  
 Response: 2294336  
 Conc: 49.84 ng/ml



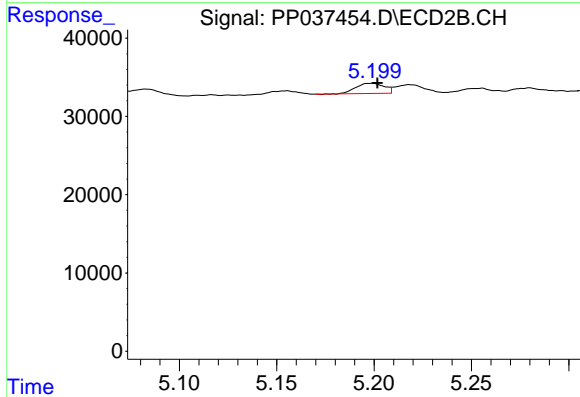
#2 Decachlorobiphenyl  
 R.T.: 9.241 min  
 Delta R.T.: -0.007 min  
 Response: 1307589  
 Conc: 46.98 ng/ml



#3 AR-1016-1

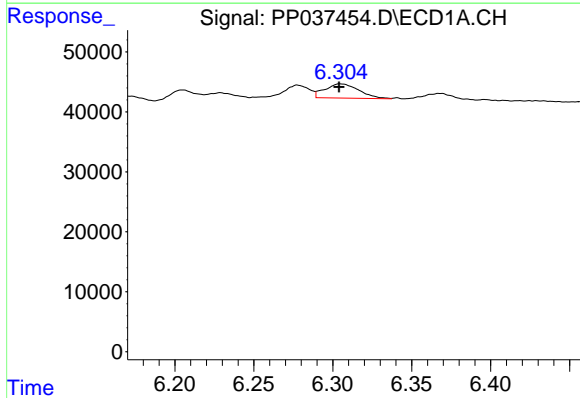
R.T.: 6.277 min  
 Delta R.T.: -0.003 min  
 Response: 21154  
 Conc: 12.17 ng/ml

Instrument :  
 ECD\_O  
 ClientSampleId :



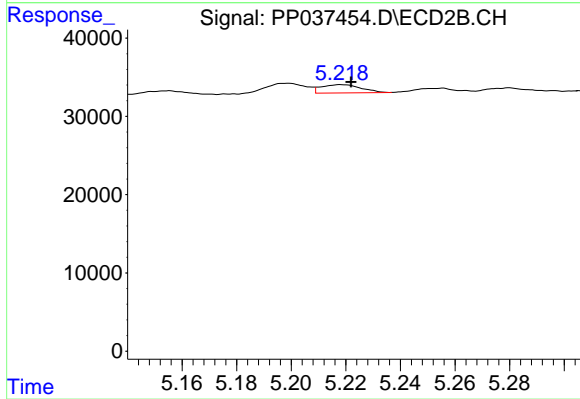
#3 AR-1016-1

R.T.: 5.198 min  
 Delta R.T.: -0.003 min  
 Response: 13064  
 Conc: 12.64 ng/ml



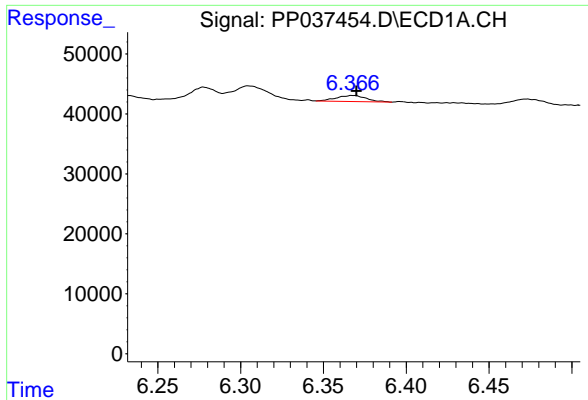
#4 AR-1016-2

R.T.: 6.304 min  
 Delta R.T.: 0.000 min  
 Response: 35693  
 Conc: 14.28 ng/ml



#4 AR-1016-2

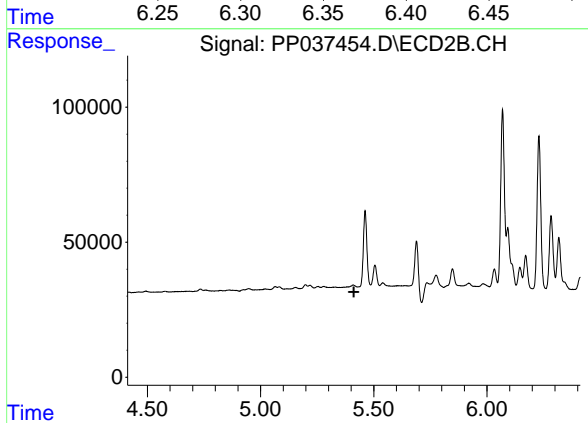
R.T.: 5.219 min  
 Delta R.T.: -0.003 min  
 Response: 10649  
 Conc: 7.44 ng/ml



#5 AR-1016-3

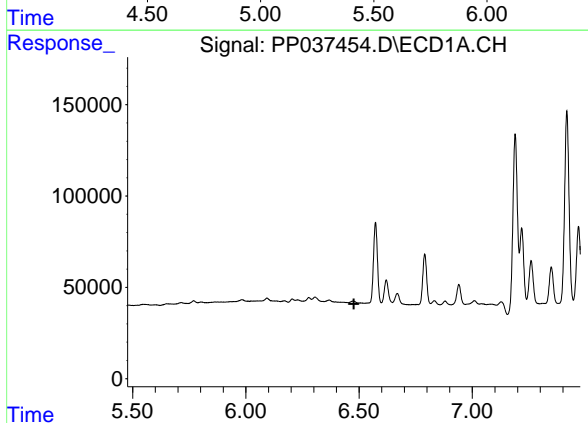
R.T.: 6.367 min  
 Delta R.T.: -0.003 min  
 Response: 12778  
 Conc: 8.02 ng/ml

Instrument :  
 ECD\_O  
 ClientSampled :



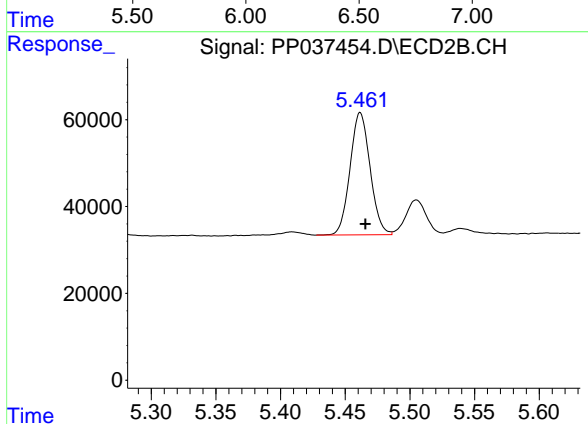
#5 AR-1016-3

R.T.: 0.000 min  
 Exp R.T. : 5.412 min  
 Response: 0  
 Conc: N.D.



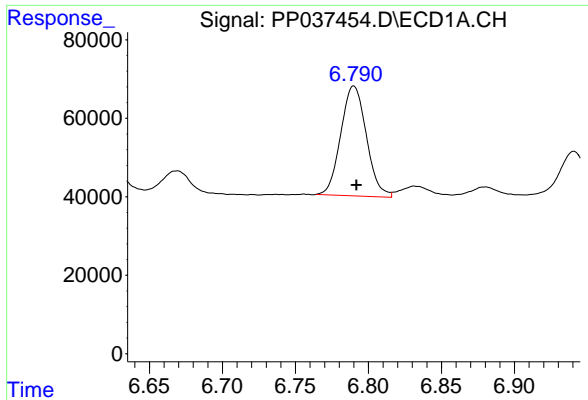
#6 AR-1016-4

R.T.: 0.000 min  
 Exp R.T. : 6.477 min  
 Response: 0  
 Conc: N.D.



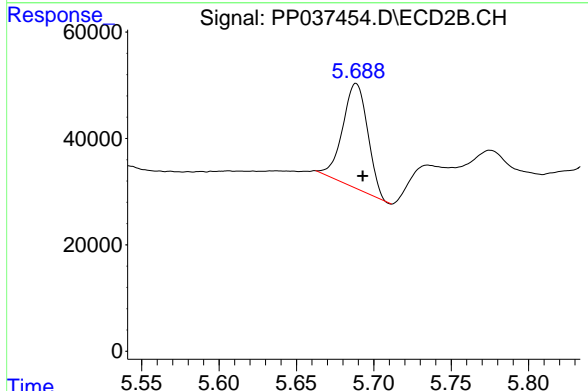
#6 AR-1016-4

R.T.: 5.462 min  
 Delta R.T.: -0.004 min  
 Response: 303755  
 Conc: 503.25 ng/ml

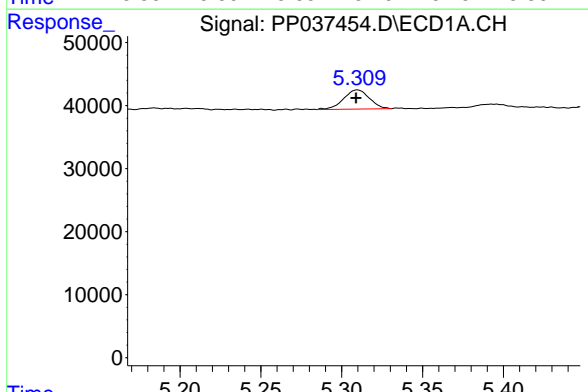


#7 AR-1016-5  
 R.T.: 6.790 min  
 Delta R.T.: -0.002 min  
 Response: 341720  
 Conc: 270.13 ng/ml

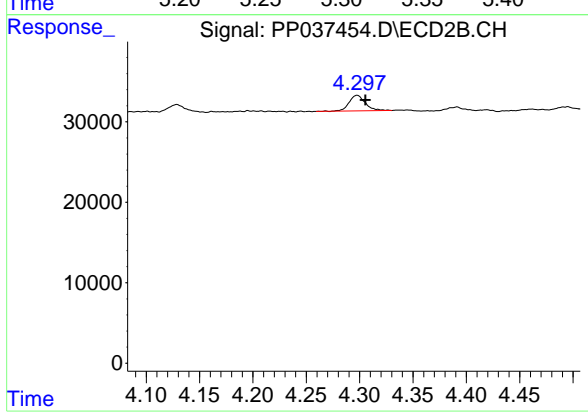
Instrument :  
 ECD\_O  
 ClientSampleId :



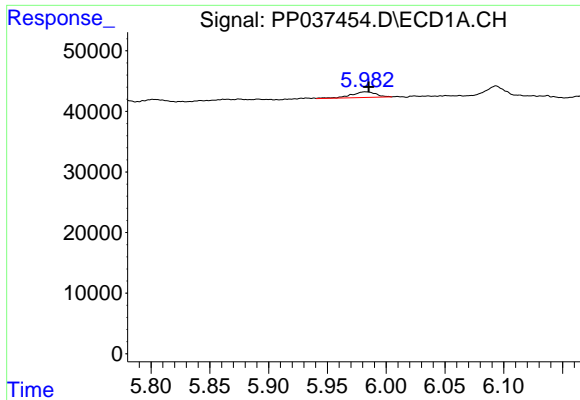
#7 AR-1016-5  
 R.T.: 5.689 min  
 Delta R.T.: -0.004 min  
 Response: 222090  
 Conc: 287.61 ng/ml



#9 AR-1221-2  
 R.T.: 5.310 min  
 Delta R.T.: 0.000 min  
 Response: 33645  
 Conc: 83.05 ng/ml



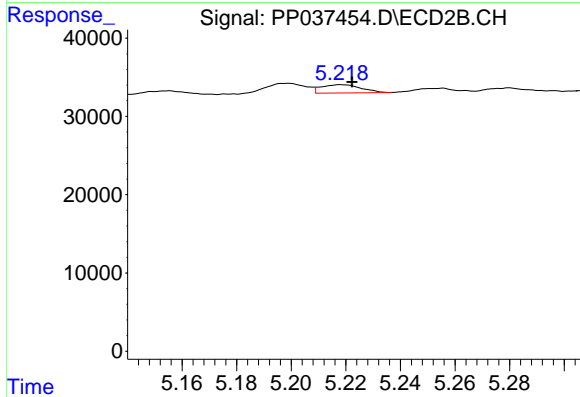
#9 AR-1221-2  
 R.T.: 4.298 min  
 Delta R.T.: -0.008 min  
 Response: 20558  
 Conc: 87.33 ng/ml



#12 AR-1232-2

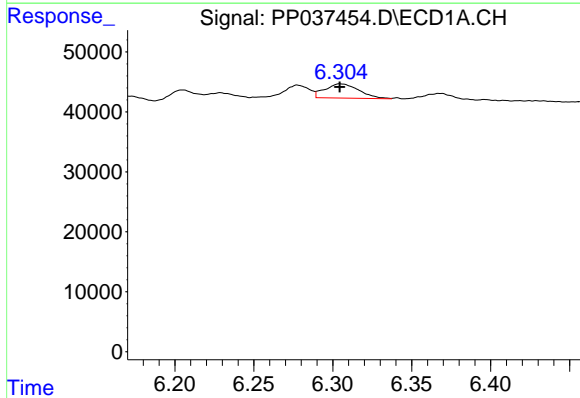
R.T.: 5.982 min  
 Delta R.T.: -0.003 min  
 Response: 13554  
 Conc: 22.73 ng/ml

Instrument :  
 ECD\_O  
 ClientSampleId :



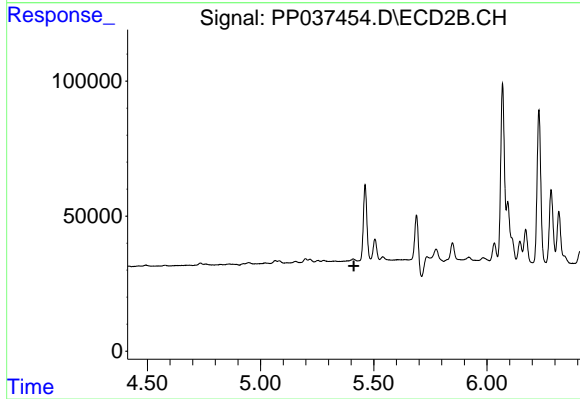
#12 AR-1232-2

R.T.: 5.219 min  
 Delta R.T.: -0.004 min  
 Response: 10649  
 Conc: 17.01 ng/ml



#13 AR-1232-3

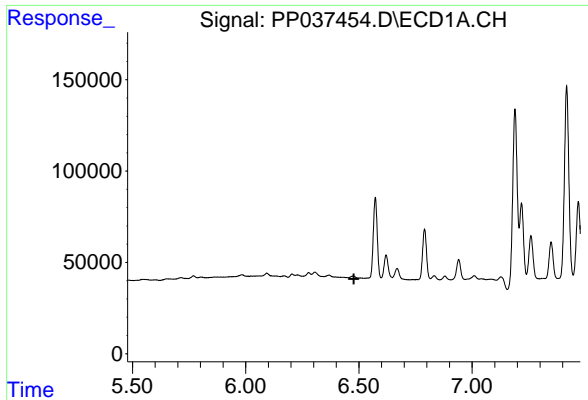
R.T.: 6.304 min  
 Delta R.T.: 0.000 min  
 Response: 35693  
 Conc: 32.62 ng/ml



#13 AR-1232-3

R.T.: 0.000 min  
 Exp R.T. : 5.412 min  
 Response: 0  
 Conc: N.D.

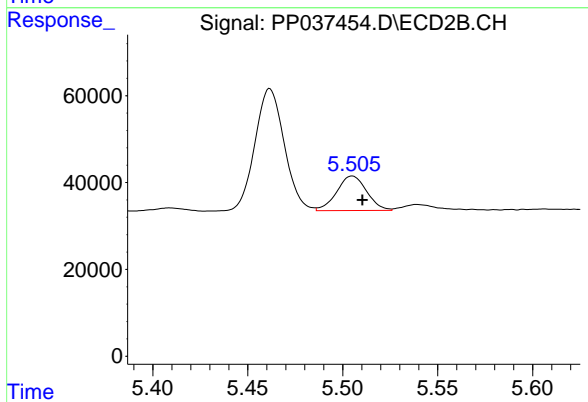




#14 AR-1232-4

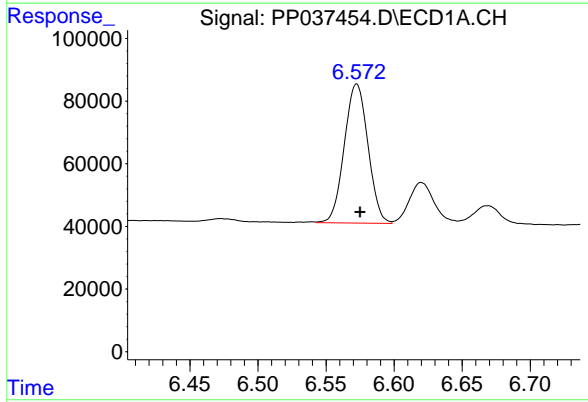
R.T.: 0.000 min  
 Exp R.T.: 6.478 min  
 Response: 0  
 Conc: N.D.

Instrument :  
 ECD\_O  
 ClientSampled :



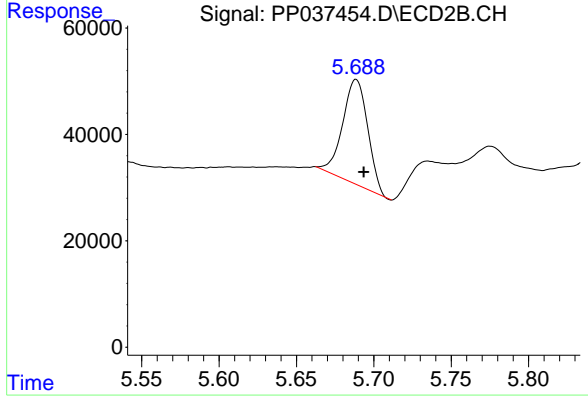
#14 AR-1232-4

R.T.: 5.505 min  
 Delta R.T.: -0.005 min  
 Response: 87742  
 Conc: 318.24 ng/ml



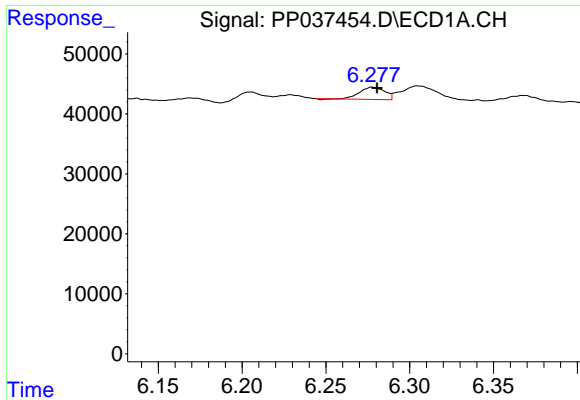
#15 AR-1232-5

R.T.: 6.573 min  
 Delta R.T.: -0.002 min  
 Response: 537686  
 Conc: 1398.09 ng/ml



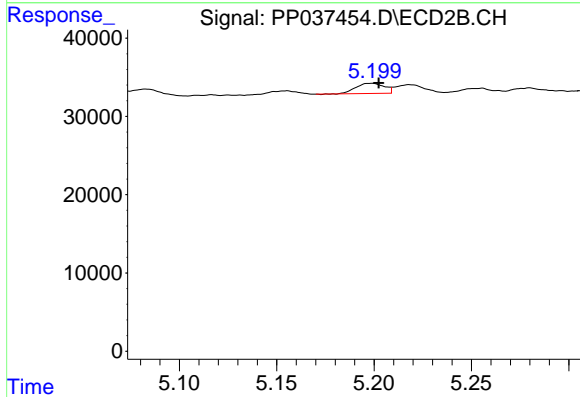
#15 AR-1232-5

R.T.: 5.689 min  
 Delta R.T.: -0.005 min  
 Response: 222090  
 Conc: 747.10 ng/ml

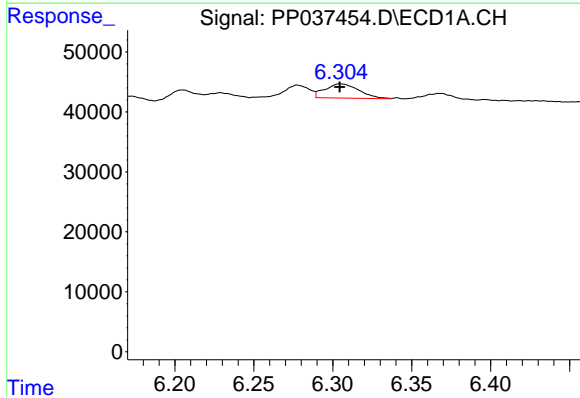


#16 AR-1242-1  
 R.T.: 6.277 min  
 Delta R.T.: -0.003 min  
 Response: 21154  
 Conc: 16.60 ng/ml

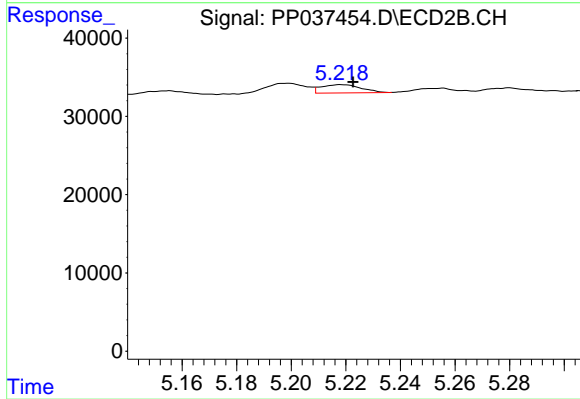
Instrument :  
 ECD\_O  
 ClientSampleId :



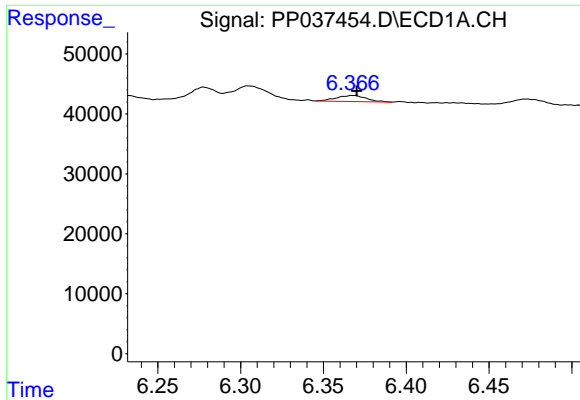
#16 AR-1242-1  
 R.T.: 5.198 min  
 Delta R.T.: -0.004 min  
 Response: 13064  
 Conc: 17.33 ng/ml



#17 AR-1242-2  
 R.T.: 6.304 min  
 Delta R.T.: 0.000 min  
 Response: 35693  
 Conc: 19.69 ng/ml

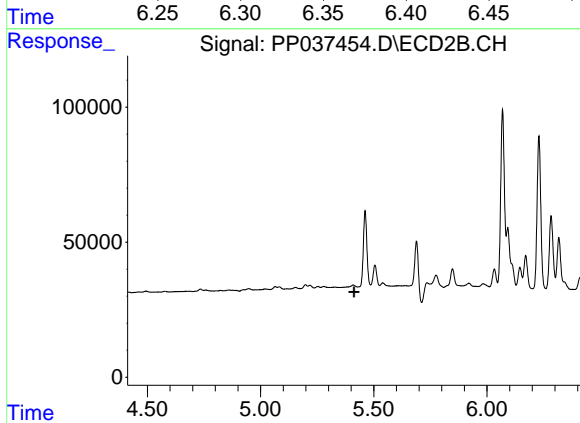


#17 AR-1242-2  
 R.T.: 5.219 min  
 Delta R.T.: -0.004 min  
 Response: 10649  
 Conc: 10.35 ng/ml

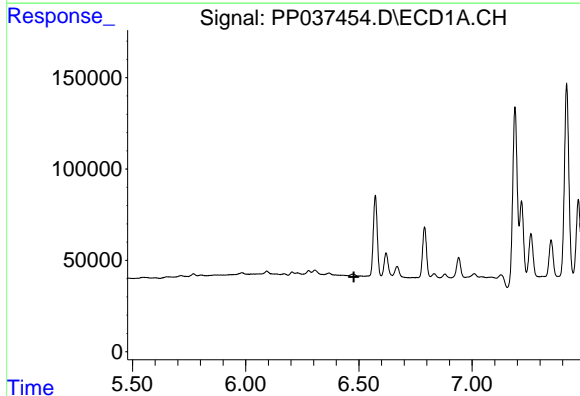


#18 AR-1242-3  
 R.T.: 6.367 min  
 Delta R.T.: -0.003 min  
 Response: 12778  
 Conc: 11.11 ng/ml

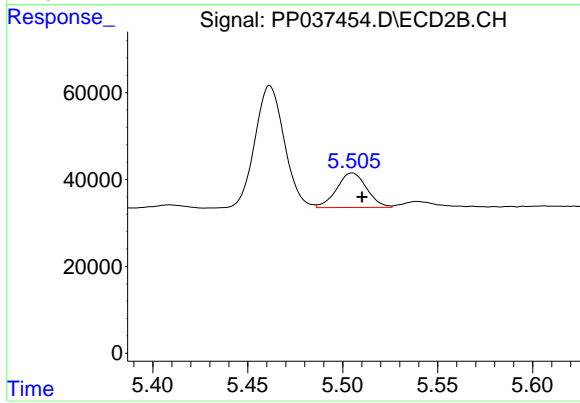
Instrument :  
 ECD\_O  
 ClientSampled :



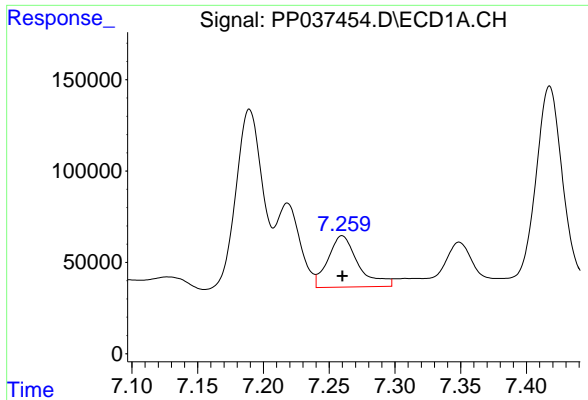
#18 AR-1242-3  
 R.T.: 0.000 min  
 Exp R.T. : 5.412 min  
 Response: 0  
 Conc: N.D.



#19 AR-1242-4  
 R.T.: 0.000 min  
 Exp R.T. : 6.478 min  
 Response: 0  
 Conc: N.D.

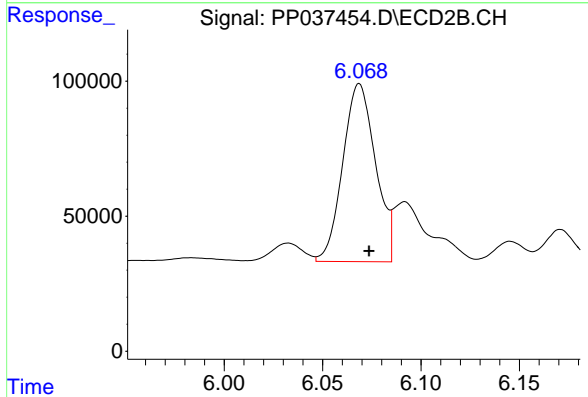


#19 AR-1242-4  
 R.T.: 5.505 min  
 Delta R.T.: -0.005 min  
 Response: 87742  
 Conc: 170.25 ng/ml

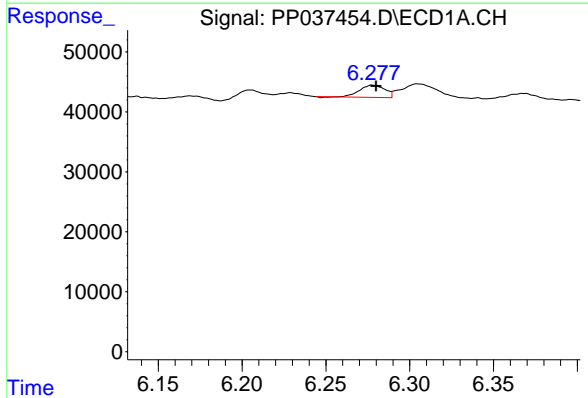


#20 AR-1242-5  
 R.T.: 7.260 min  
 Delta R.T.: 0.000 min  
 Response: 451555  
 Conc: 434.20 ng/ml

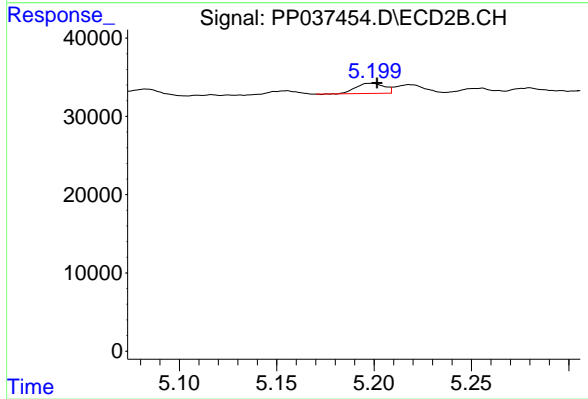
Instrument :  
 ECD\_O  
 ClientSampled :



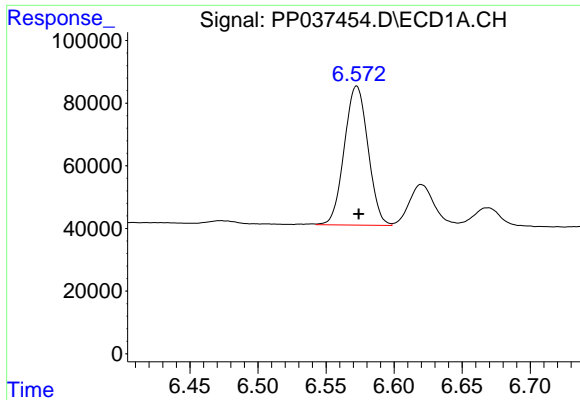
#20 AR-1242-5  
 R.T.: 6.069 min  
 Delta R.T.: -0.005 min  
 Response: 763068  
 Conc: 1121.04 ng/ml



#21 AR-1248-1  
 R.T.: 6.277 min  
 Delta R.T.: -0.002 min  
 Response: 21154  
 Conc: 20.16 ng/ml



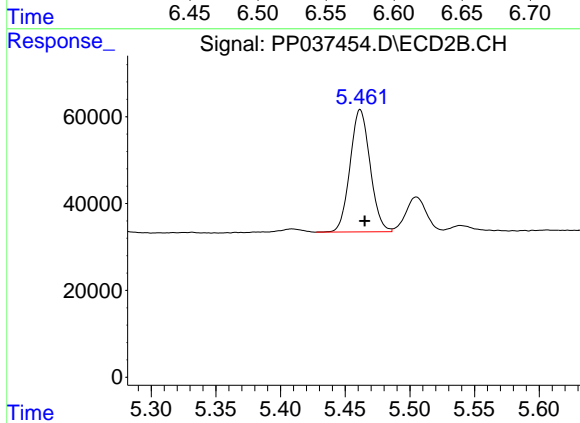
#21 AR-1248-1  
 R.T.: 5.198 min  
 Delta R.T.: -0.003 min  
 Response: 13064  
 Conc: 20.70 ng/ml



#22 AR-1248-2

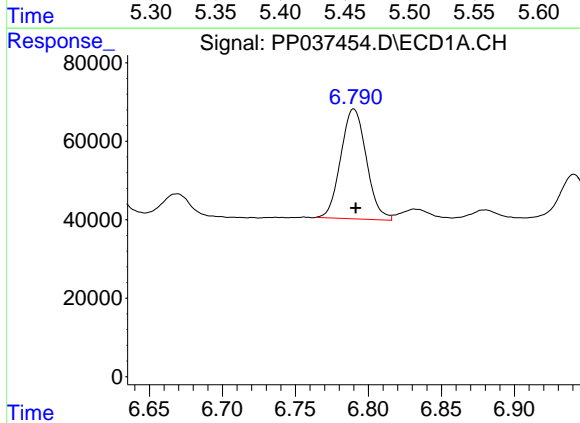
R.T.: 6.573 min  
 Delta R.T.: -0.002 min  
 Response: 537686  
 Conc: 362.19 ng/ml

Instrument :  
 ECD\_O  
 ClientSampleId :



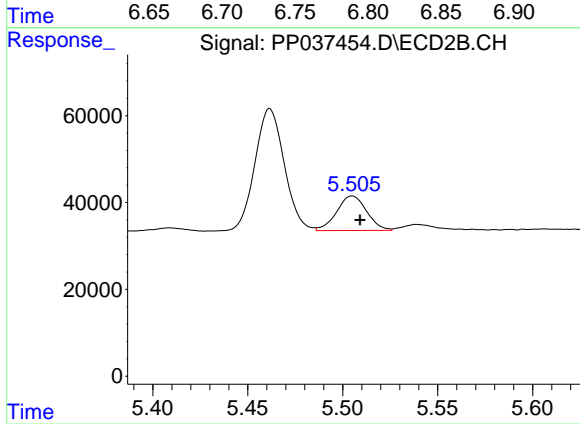
#22 AR-1248-2

R.T.: 5.462 min  
 Delta R.T.: -0.003 min  
 Response: 303755  
 Conc: 370.31 ng/ml



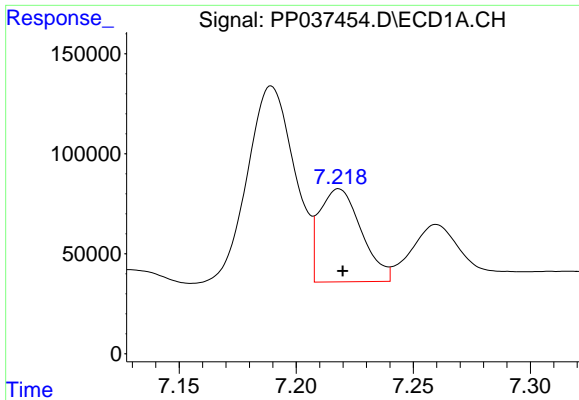
#23 AR-1248-3

R.T.: 6.790 min  
 Delta R.T.: -0.001 min  
 Response: 341720  
 Conc: 206.88 ng/ml



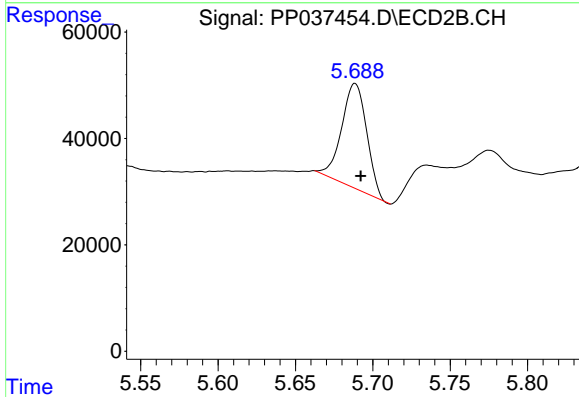
#23 AR-1248-3

R.T.: 5.505 min  
 Delta R.T.: -0.004 min  
 Response: 87742  
 Conc: 102.53 ng/ml

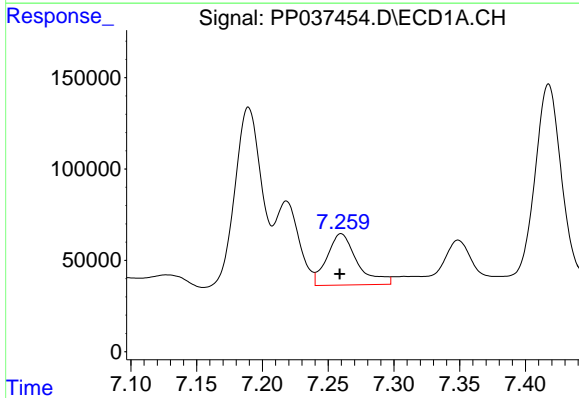


#24 AR-1248-4  
 R.T.: 7.218 min  
 Delta R.T.: -0.002 min  
 Response: 577918  
 Conc: 305.76 ng/ml

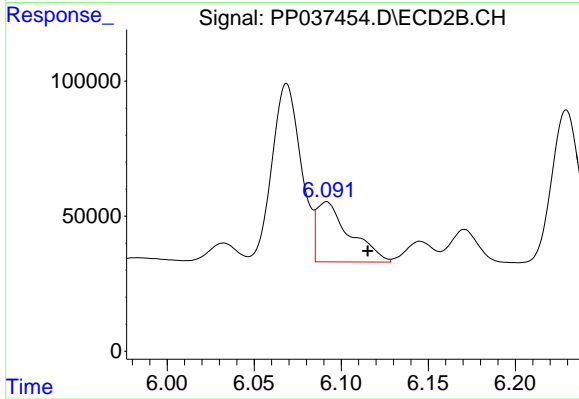
Instrument :  
 ECD\_O  
 ClientSampleId :



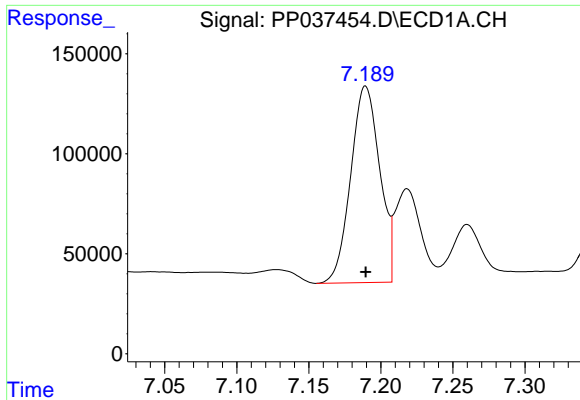
#24 AR-1248-4  
 R.T.: 5.689 min  
 Delta R.T.: -0.004 min  
 Response: 222090  
 Conc: 218.23 ng/ml



#25 AR-1248-5  
 R.T.: 7.260 min  
 Delta R.T.: 0.001 min  
 Response: 451555  
 Conc: 241.27 ng/ml



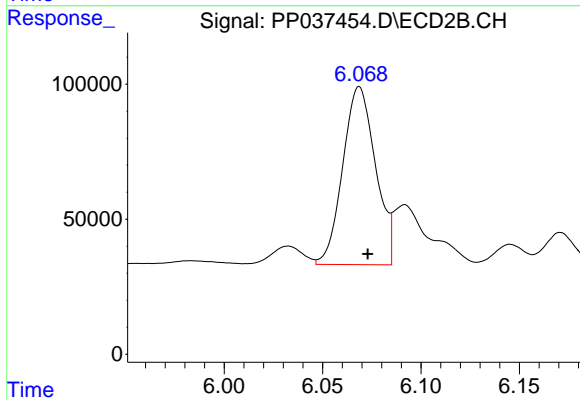
#25 AR-1248-5  
 R.T.: 6.092 min  
 Delta R.T.: -0.024 min  
 Response: 293133  
 Conc: 276.35 ng/ml



#26 AR-1254-1

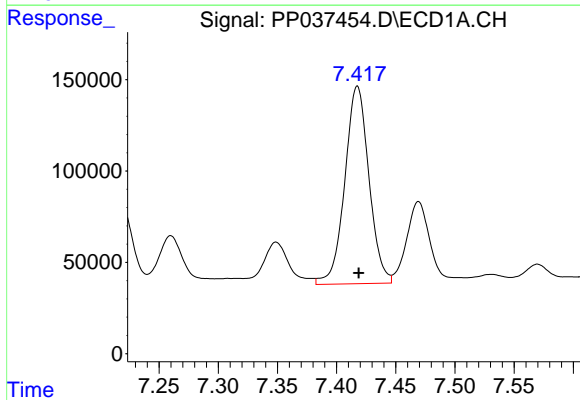
R.T.: 7.189 min  
 Delta R.T.: 0.000 min  
 Response: 1380618  
 Conc: 768.51 ng/ml

Instrument :  
 ECD\_O  
 ClientSampled :



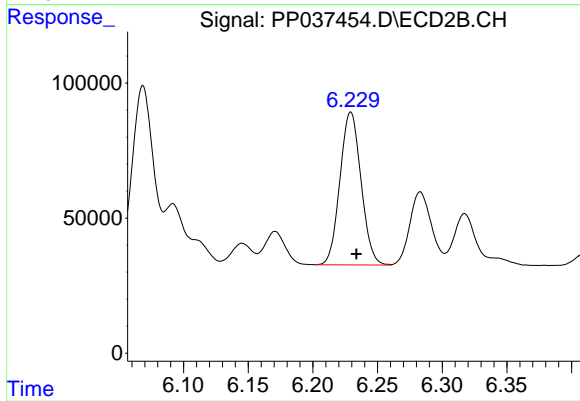
#26 AR-1254-1

R.T.: 6.069 min  
 Delta R.T.: -0.004 min  
 Response: 763068  
 Conc: 514.00 ng/ml



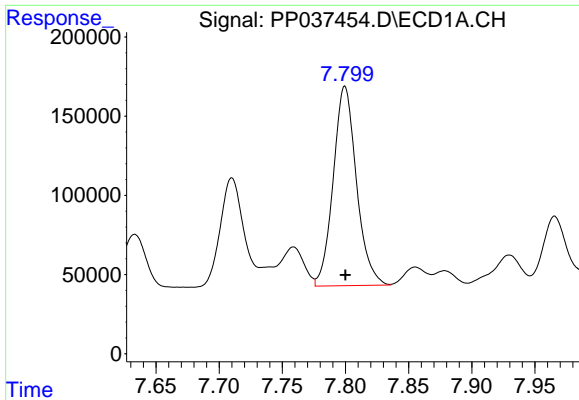
#27 AR-1254-2

R.T.: 7.418 min  
 Delta R.T.: -0.001 min  
 Response: 1534854  
 Conc: 551.77 ng/ml



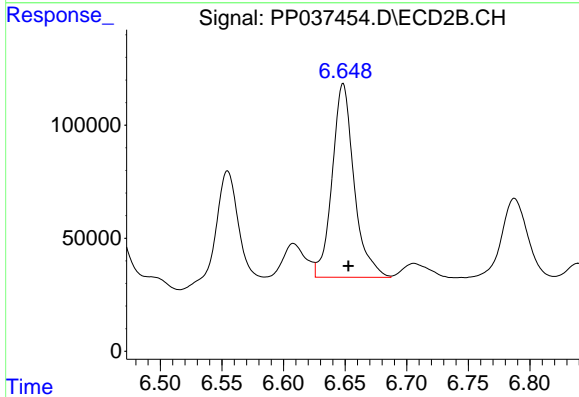
#27 AR-1254-2

R.T.: 6.229 min  
 Delta R.T.: -0.004 min  
 Response: 642460  
 Conc: 494.58 ng/ml

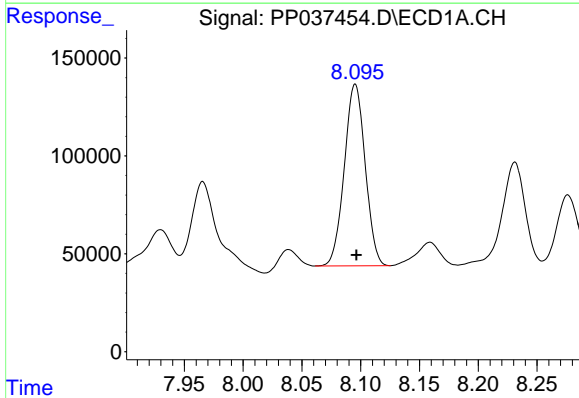


#28 AR-1254-3  
 R.T.: 7.800 min  
 Delta R.T.: 0.000 min  
 Response: 1612982  
 Conc: 523.18 ng/ml

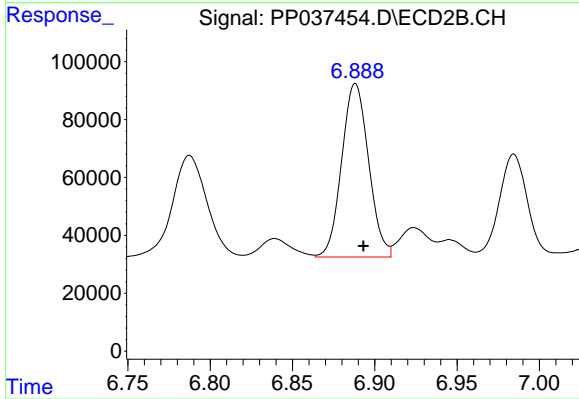
Instrument :  
 ECD\_O  
 ClientSampleId :



#28 AR-1254-3  
 R.T.: 6.648 min  
 Delta R.T.: -0.004 min  
 Response: 1062379  
 Conc: 497.83 ng/ml

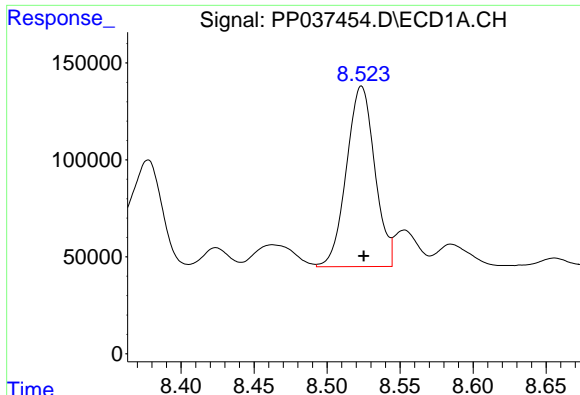


#29 AR-1254-4  
 R.T.: 8.095 min  
 Delta R.T.: 0.000 min  
 Response: 1148079  
 Conc: 505.44 ng/ml



#29 AR-1254-4  
 R.T.: 6.888 min  
 Delta R.T.: -0.005 min  
 Response: 681406  
 Conc: 502.24 ng/ml

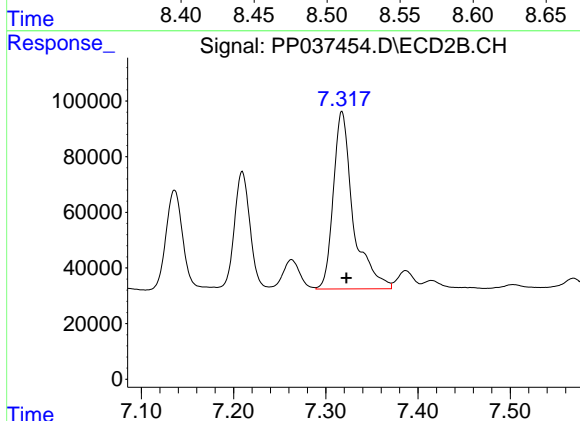




#30 AR-1254-5

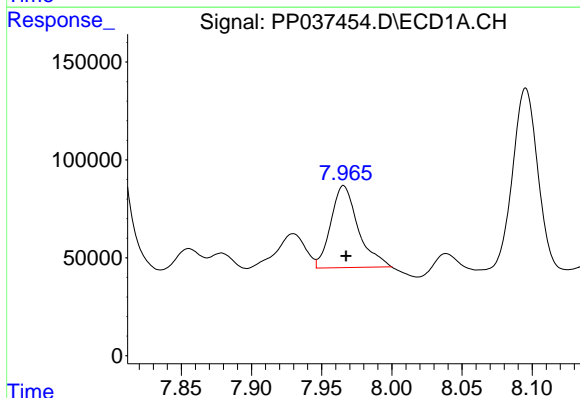
R.T.: 8.524 min  
Delta R.T.: -0.002 min  
Response: 1257343  
Conc: 502.46 ng/ml

Instrument :  
ECD\_O  
ClientSampled :



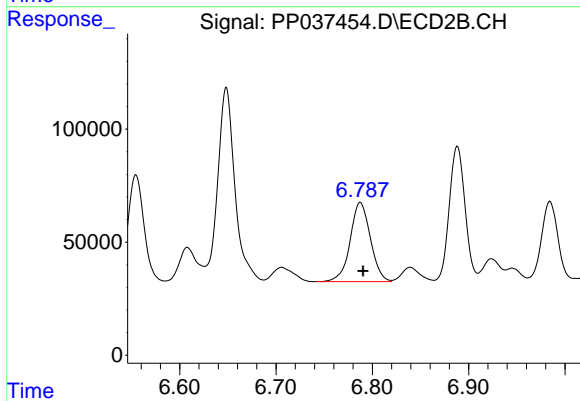
#30 AR-1254-5

R.T.: 7.317 min  
Delta R.T.: -0.005 min  
Response: 955752  
Conc: 509.83 ng/ml



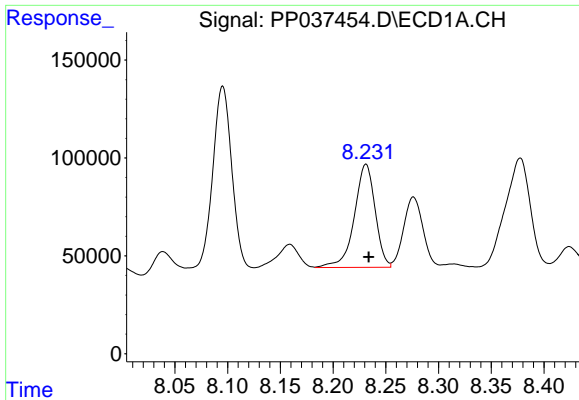
#31 AR-1260-1

R.T.: 7.966 min  
Delta R.T.: -0.002 min  
Response: 568543  
Conc: 258.26 ng/ml



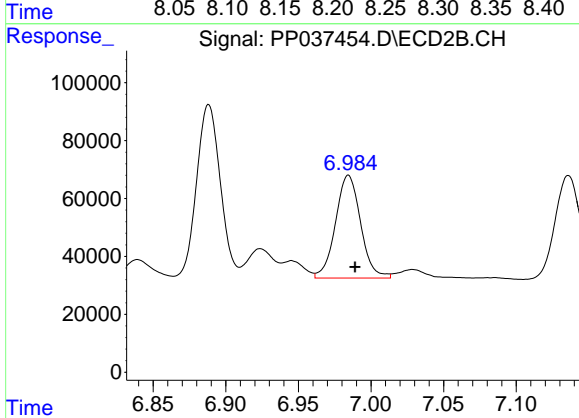
#31 AR-1260-1

R.T.: 6.787 min  
Delta R.T.: -0.003 min  
Response: 512625  
Conc: 370.98 ng/ml

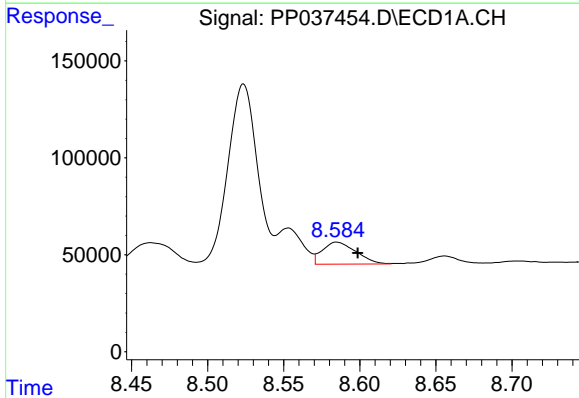


#32 AR-1260-2  
 R.T.: 8.231 min  
 Delta R.T.: -0.003 min  
 Response: 722529  
 Conc: 259.74 ng/ml

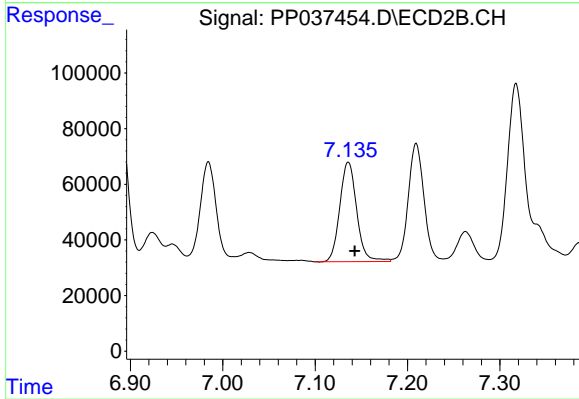
Instrument :  
 ECD\_O  
 ClientSampled :



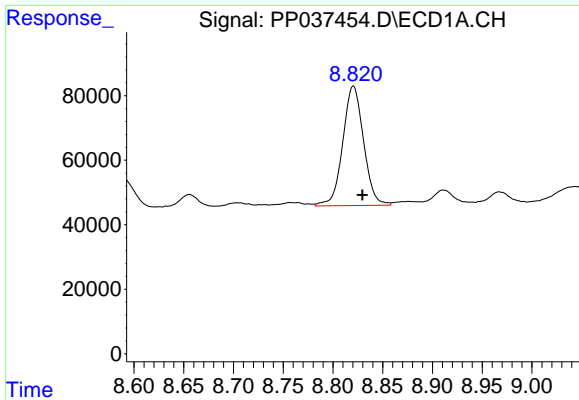
#32 AR-1260-2  
 R.T.: 6.984 min  
 Delta R.T.: -0.005 min  
 Response: 427509  
 Conc: 254.48 ng/ml



#33 AR-1260-3  
 R.T.: 8.585 min  
 Delta R.T.: -0.014 min  
 Response: 175230  
 Conc: 86.70 ng/ml



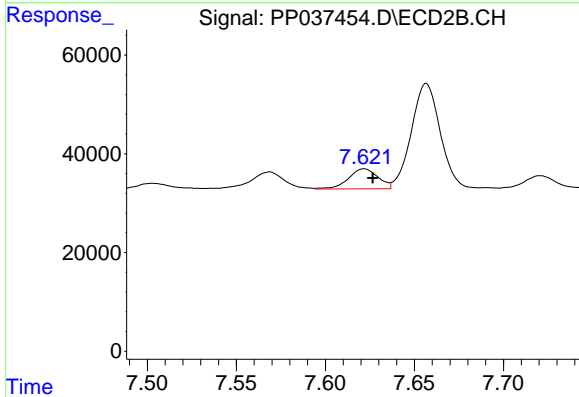
#33 AR-1260-3  
 R.T.: 7.136 min  
 Delta R.T.: -0.007 min  
 Response: 455950  
 Conc: 266.11 ng/ml



#34 AR-1260-4

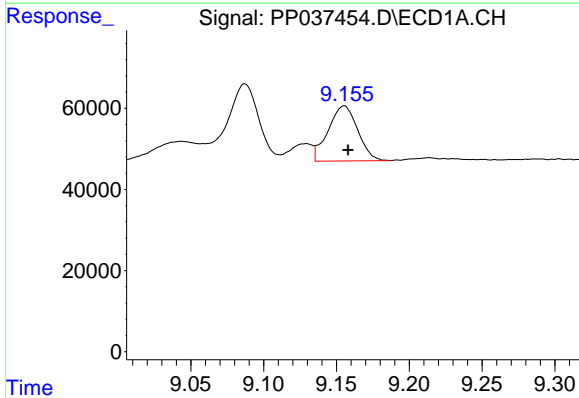
R.T.: 8.821 min  
 Delta R.T.: -0.009 min  
 Response: 539596  
 Conc: 219.36 ng/ml

Instrument :  
 ECD\_O  
 ClientSampleId :



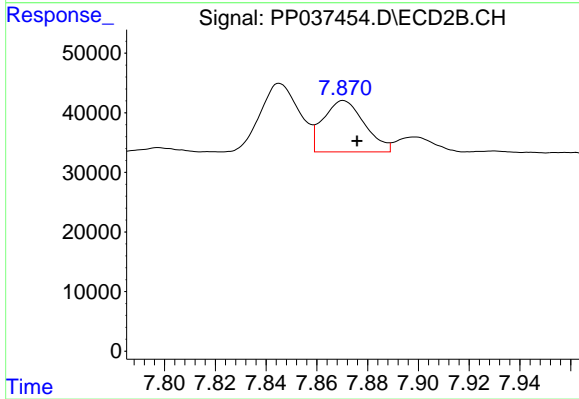
#34 AR-1260-4

R.T.: 7.622 min  
 Delta R.T.: -0.005 min  
 Response: 47022  
 Conc: 34.59 ng/ml



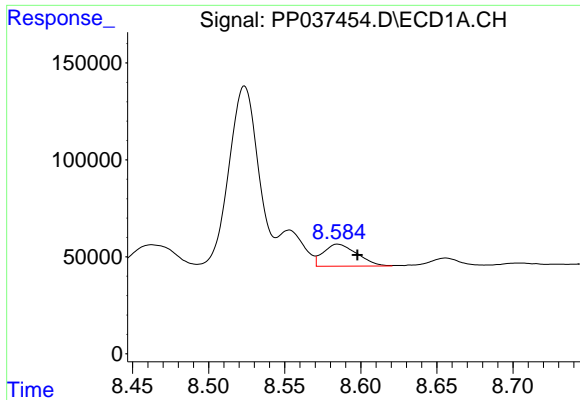
#35 AR-1260-5

R.T.: 9.155 min  
 Delta R.T.: -0.003 min  
 Response: 191459  
 Conc: 41.49 ng/ml



#35 AR-1260-5

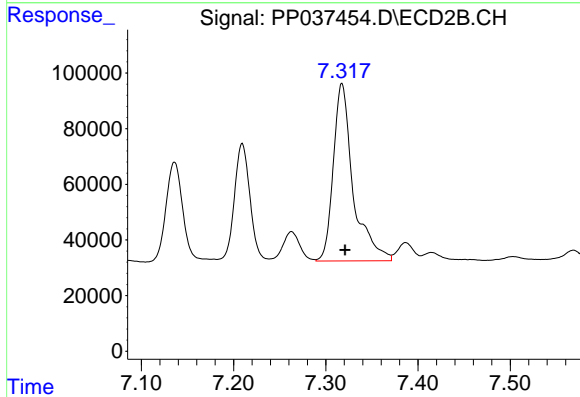
R.T.: 7.871 min  
 Delta R.T.: -0.005 min  
 Response: 97345  
 Conc: 30.18 ng/ml



#36 AR-1262-1

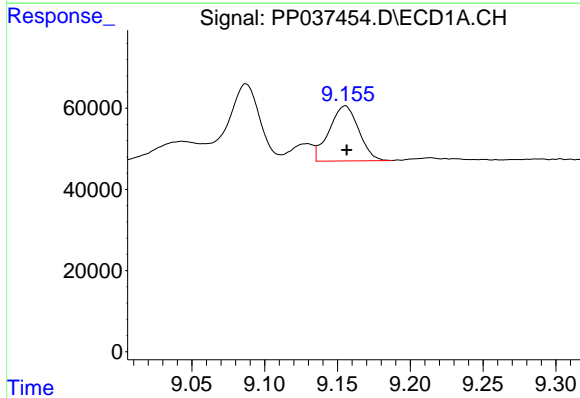
R.T.: 8.585 min  
 Delta R.T.: -0.013 min  
 Response: 175230  
 Conc: 60.16 ng/ml

Instrument :  
 ECD\_O  
 ClientSampled :



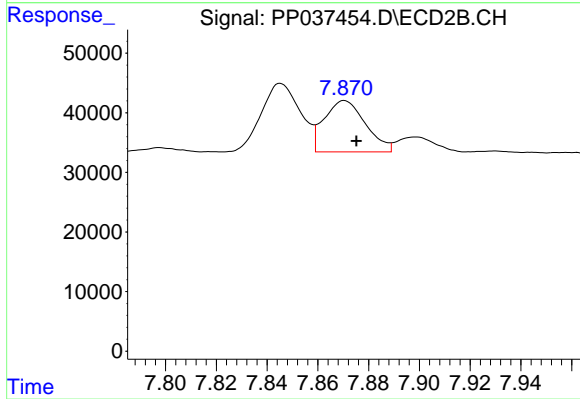
#36 AR-1262-1

R.T.: 7.317 min  
 Delta R.T.: -0.003 min  
 Response: 955752  
 Conc: 920.42 ng/ml



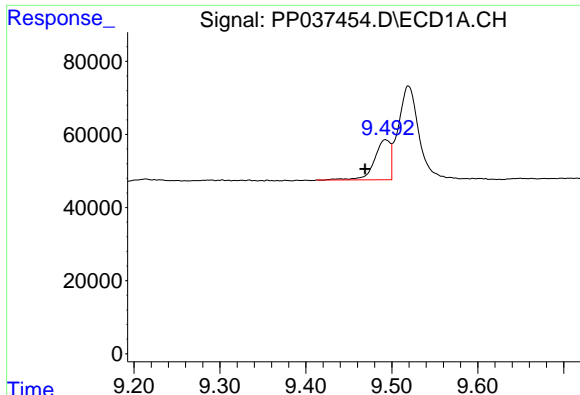
#37 AR-1262-2

R.T.: 9.155 min  
 Delta R.T.: 0.000 min  
 Response: 191459  
 Conc: 36.46 ng/ml



#37 AR-1262-2

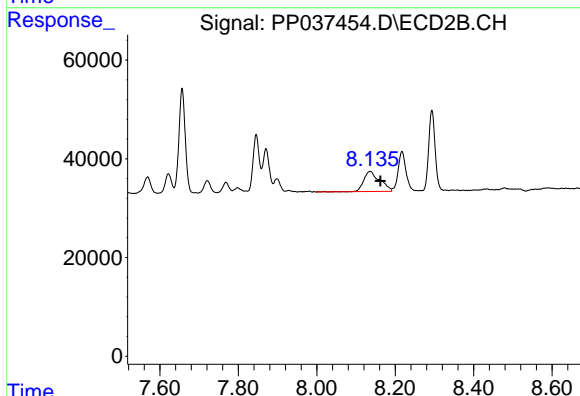
R.T.: 7.871 min  
 Delta R.T.: -0.005 min  
 Response: 97345  
 Conc: 27.98 ng/ml



#38 AR-1262-3

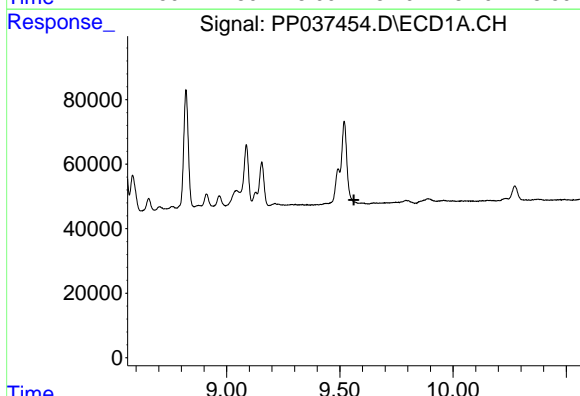
R.T.: 9.493 min  
 Delta R.T.: 0.024 min  
 Response: 141750  
 Conc: 36.99 ng/ml

Instrument :  
 ECD\_O  
 ClientSampleId :



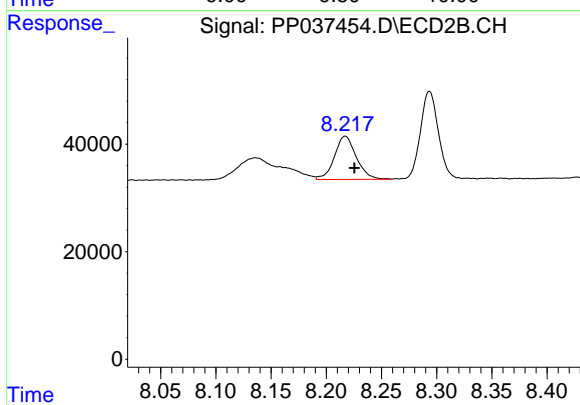
#38 AR-1262-3

R.T.: 8.136 min  
 Delta R.T.: -0.026 min  
 Response: 116566  
 Conc: 82.79 ng/ml



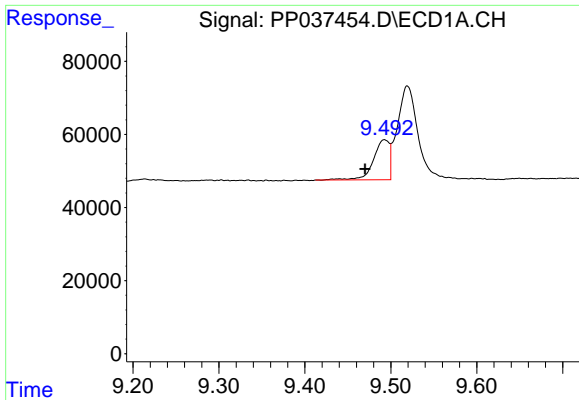
#39 AR-1262-4

R.T.: 0.000 min  
 Exp R.T. : 9.562 min  
 Response: 0  
 Conc: N.D.



#39 AR-1262-4

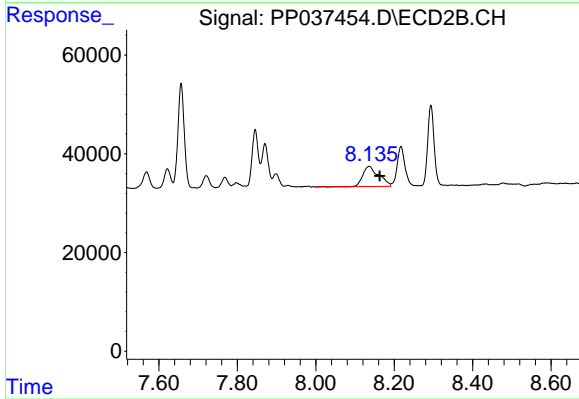
R.T.: 8.217 min  
 Delta R.T.: -0.008 min  
 Response: 110964  
 Conc: 41.67 ng/ml



#41 AR-1268-1

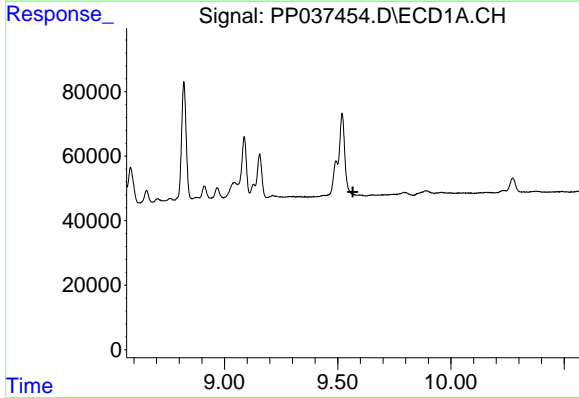
R.T.: 9.493 min  
 Delta R.T.: 0.022 min  
 Response: 141750  
 Conc: 23.34 ng/ml

Instrument :  
 ECD\_O  
 ClientSampled :



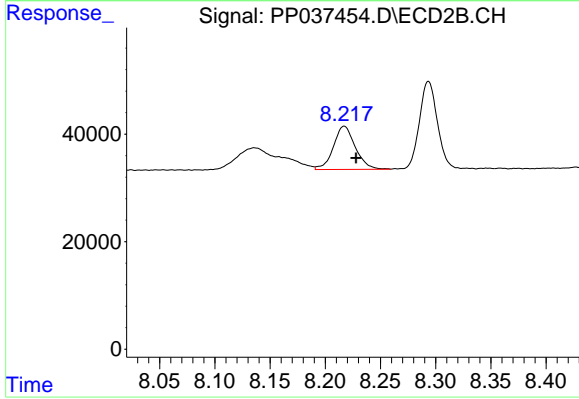
#41 AR-1268-1

R.T.: 8.136 min  
 Delta R.T.: -0.027 min  
 Response: 116566  
 Conc: 29.25 ng/ml



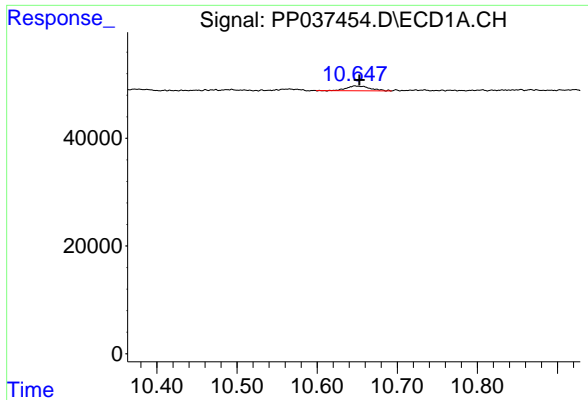
#42 AR-1268-2

R.T.: 0.000 min  
 Exp R.T. : 9.567 min  
 Response: 0  
 Conc: N.D.



#42 AR-1268-2

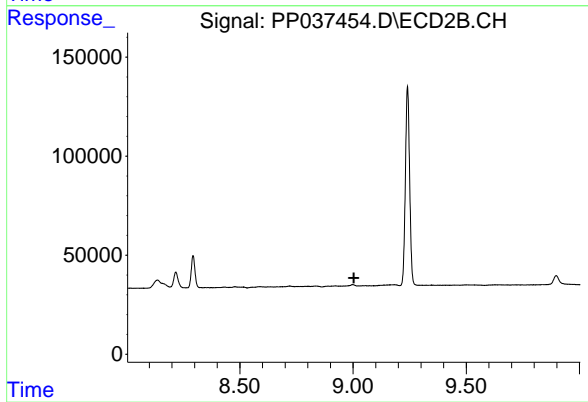
R.T.: 8.217 min  
 Delta R.T.: -0.011 min  
 Response: 110964  
 Conc: 29.98 ng/ml



#45 AR-1268-5

R.T.: 10.647 min  
Delta R.T.: -0.005 min  
Response: 17921  
Conc: 1.13 ng/ml

Instrument :  
ECD\_O  
ClientSampleId :



#45 AR-1268-5

R.T.: 0.000 min  
Exp R.T. : 9.004 min  
Response: 0  
Conc: N.D.