

Data Path : Z:\pestpcbsrv\HPCHEM1\ECD O\Data\PO072118\
 Data File : PO046983.D
 Signal(s) : Signal #1: ECD1A.CH Signal #2: ECD2B.CH
 Acq On : 20 Jul 2018 12:31
 Operator : SM/SJ
 Sample : J4062-19
 Misc :
 ALS Vial : 35 Sample Multiplier: 1

Instrument :
 ECD_O
ClientSampled :
 TP-8

Manual Integrations
APPROVED
 Sohil
 7/23/2018 2:28:44 PM

Integration File signal 1: autoint1.e
 Integration File signal 2: autoint2.e
 Quant Time: Jul 21 04:38:53 2018
 Quant Method : Z:\pestpcbsrv\HPCHEM1\ECD_O\methods\PO071918.M
 Quant Title : GC EXTRACTABLES
 QLast Update : Thu Jul 19 01:07:21 2018
 Response via : Initial Calibration
 Integrator: ChemStation 6890 Scale Mode: Small noise peaks clipped

Volume Inj. : 2 ul
 Signal #1 Phase : ZB-MR1 Signal #2 Phase: ZB-MR2
 Signal #1 Info : 30Mx0.32mmx 0.50µ Signal #2 Info : 30M x 0.32mm x 0.25µm

Compound	RT#1	RT#2	Resp#1	Resp#2	ng/ml	ng/ml

System Monitoring Compounds						
1) SA Tetrachlo...	4.198	3.523	3657474	3999364	12.727	13.102
2) SA Decachlor...	9.721	8.443	2219639	2138029	10.092	8.732m
Target Compounds						
31) L7 AR-1260-1	6.931	6.053	198806	317443	16.769m	19.883m
32) L7 AR-1260-2	7.176	6.238	624205	503071	44.646m	23.918m#
33) L7 AR-1260-3	7.464	6.564	443950	511999	27.565m	23.179
34) L7 AR-1260-4	8.068	7.099	266372	394477	11.702	10.669m
35) L7 AR-1260-5	8.364	7.442	193259	298238	13.642m	11.757m

(f)=RT Delta > 1/2 Window (#)=Amounts differ by > 25% (m)=manual int.

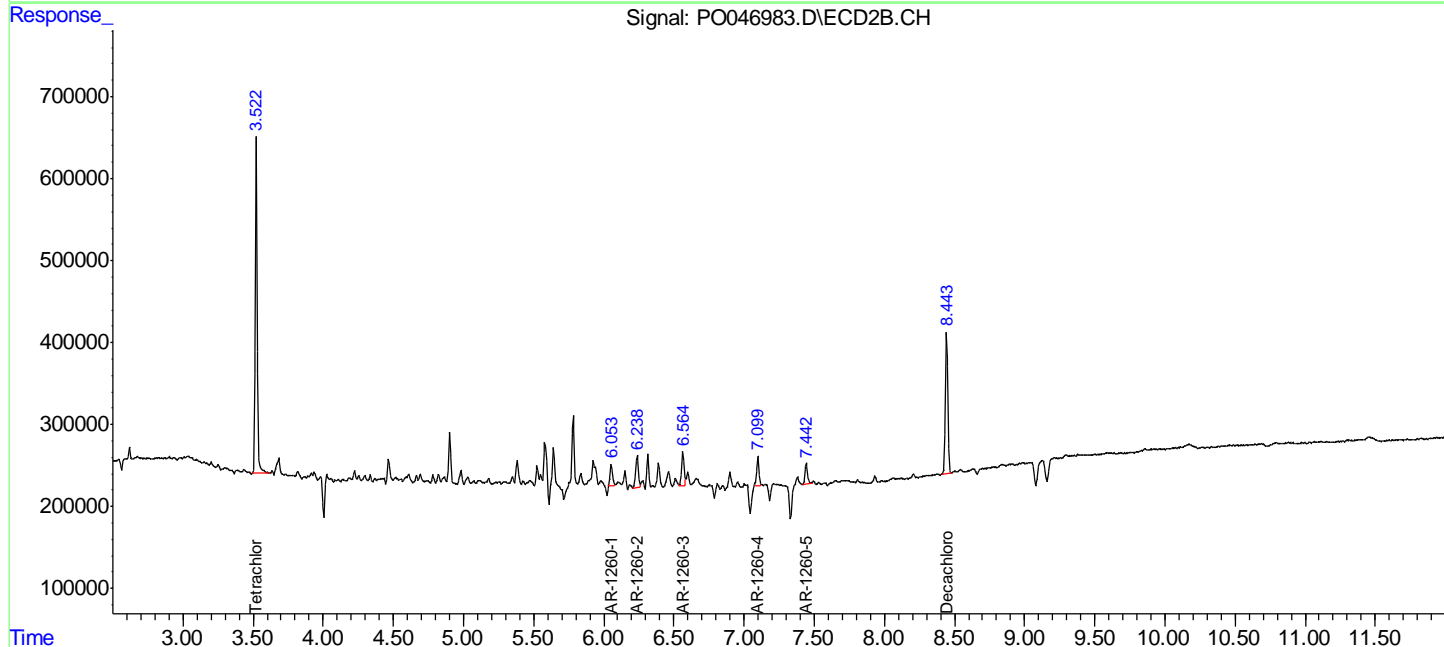
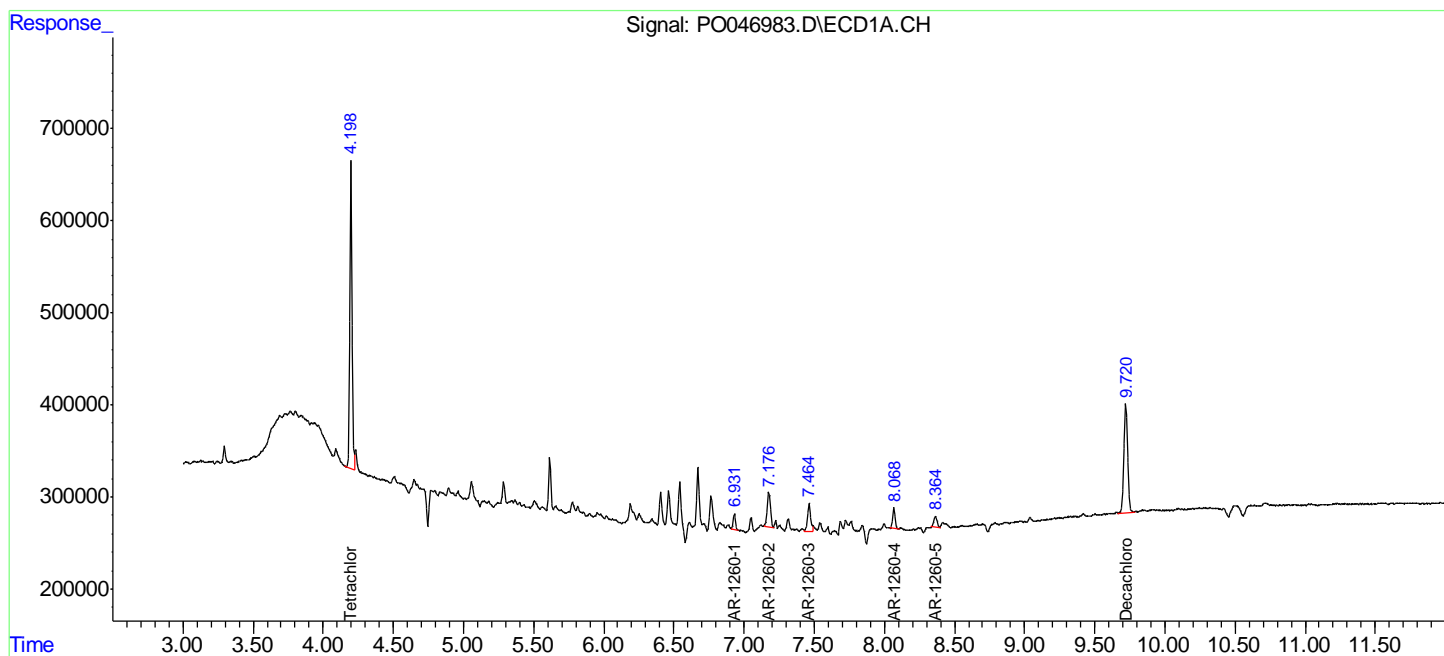
Data Path : Z:\pestpcbsrv\HPCHEM1\ECD O\Data\PO072118\
 Data File : PO046983.D
 Signal(s) : Signal #1: ECD1A.CH Signal #2: ECD2B.CH
 Acq On : 20 Jul 2018 12:31
 Operator : SM/SJ
 Sample : J4062-19
 Misc :
 ALS Vial : 35 Sample Multiplier: 1

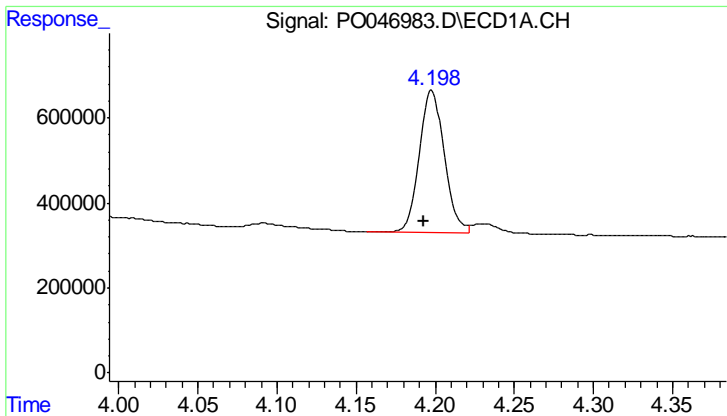
Instrument :
 ECD_O
 Client Sampled :
 TP-8

Manual Integrations
APPROVED
 Sohil
 7/23/2018 2:28:44 PM

Integration File signal 1: autoint1.e
 Integration File signal 2: autoint2.e
 Quant Time: Jul 21 04:38:53 2018
 Quant Method : Z:\pestpcbsrv\HPCHEM1\ECD_O\methods\PO071918.M
 Quant Title : GC EXTRACTABLES
 QLast Update : Thu Jul 19 01:07:21 2018
 Response via : Initial Calibration
 Integrator: ChemStation 6890 Scale Mode: Small noise peaks clipped

Volume Inj. : 2 µl
 Signal #1 Phase : ZB-MR1 Signal #2 Phase: ZB-MR2
 Signal #1 Info : 30Mx0.32mmx 0.50µ Signal #2 Info : 30M x 0.32mm x 0.25µm





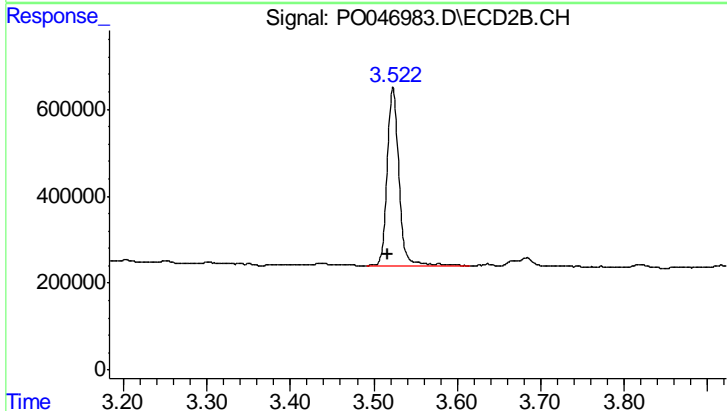
#1 Tetrachloro-m-xylene

R.T.: 4.198 min
 Delta R.T.: 0.005 min
 Response: 3657474
 Conc: 12.73 ng/ml

Instrument :
 ECD_O
 ClientSampled :
 TP-8

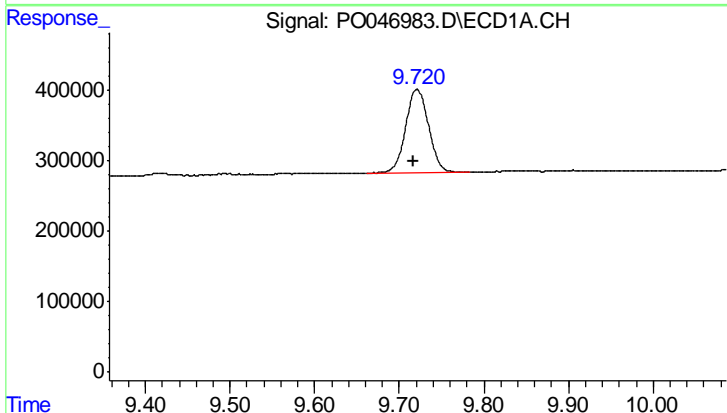
Manual Integrations
 APPROVED

Sohil
 7/23/2018 2:28:44 PM



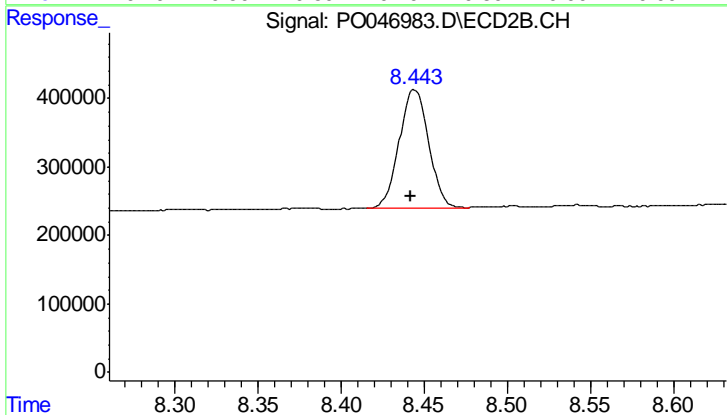
#1 Tetrachloro-m-xylene

R.T.: 3.523 min
 Delta R.T.: 0.006 min
 Response: 3999364
 Conc: 13.10 ng/ml



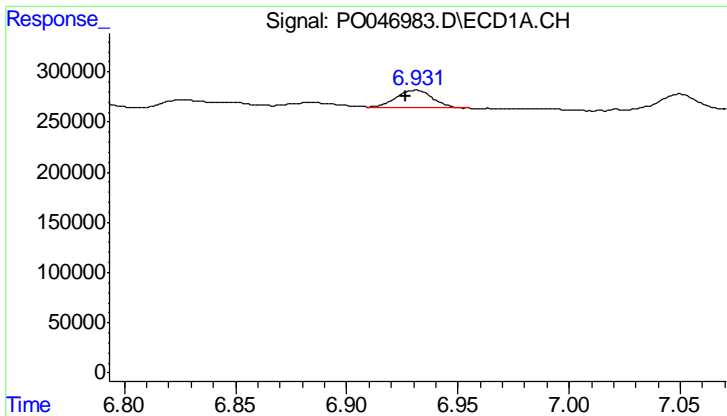
#2 Decachlorobiphenyl

R.T.: 9.721 min
 Delta R.T.: 0.003 min
 Response: 2219639
 Conc: 10.09 ng/ml



#2 Decachlorobiphenyl

R.T.: 8.443 min
 Delta R.T.: 0.002 min
 Response: 2138029
 Conc: 8.73 ng/ml m



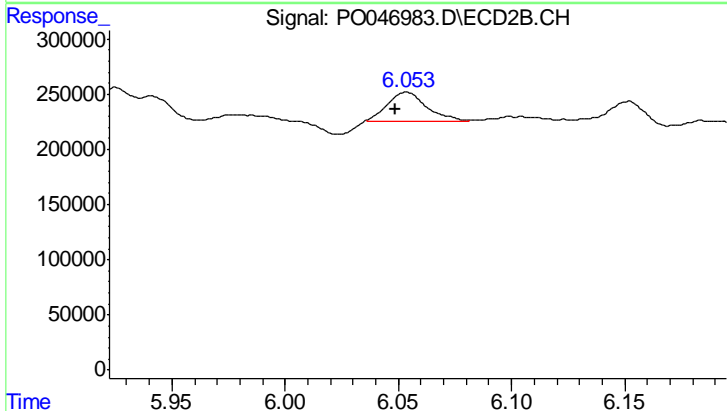
#31 AR-1260-1

R.T.: 6.931 min
 Delta R.T.: 0.005 min
 Response: 198806
 Conc: 16.77 ng/ml

Instrument :
 ECD_O
 ClientSampled :
 TP-8

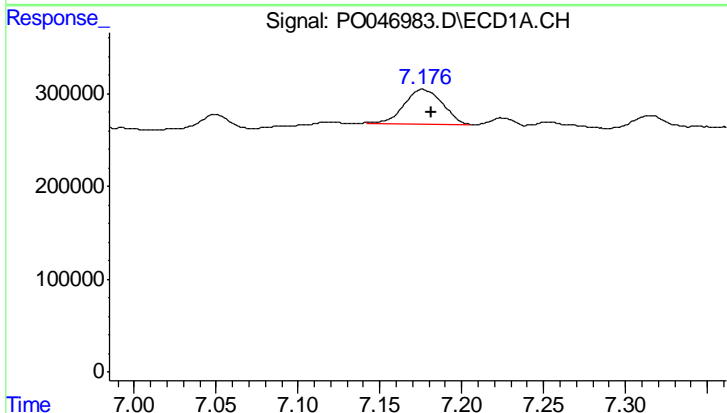
Manual Integrations
 APPROVED

Sohil
 7/23/2018 2:28:44 PM



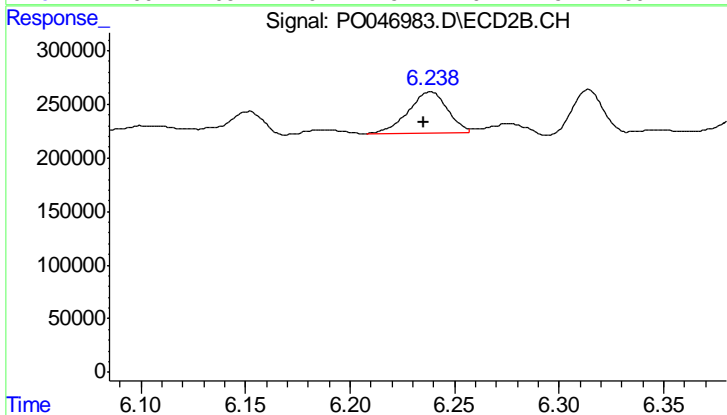
#31 AR-1260-1

R.T.: 6.053 min
 Delta R.T.: 0.005 min
 Response: 317443
 Conc: 19.88 ng/ml m



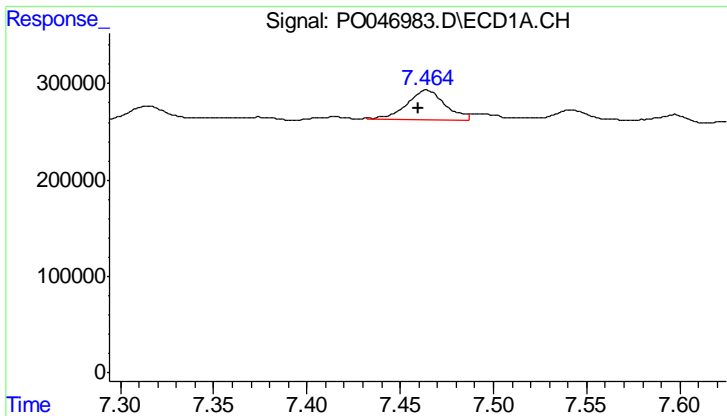
#32 AR-1260-2

R.T.: 7.176 min
 Delta R.T.: -0.006 min
 Response: 624205
 Conc: 44.65 ng/ml m



#32 AR-1260-2

R.T.: 6.238 min
 Delta R.T.: 0.003 min
 Response: 503071
 Conc: 23.92 ng/ml m



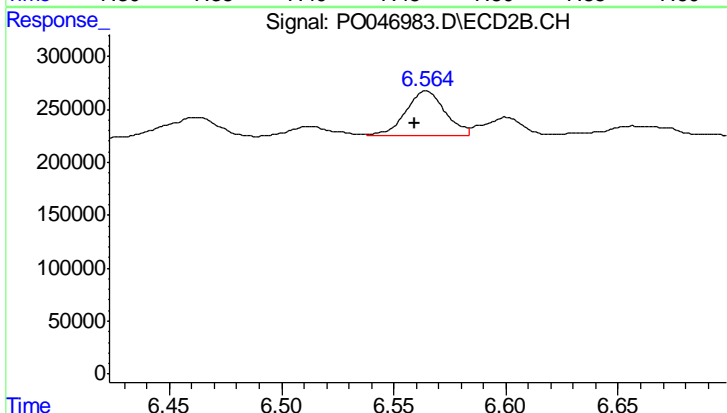
#33 AR-1260-3

R.T.: 7.464 min
 Delta R.T.: 0.003 min
 Response: 443950
 Conc: 27.57 ng/ml

Instrument :
 ECD_O
 ClientSampled :
 TP-8

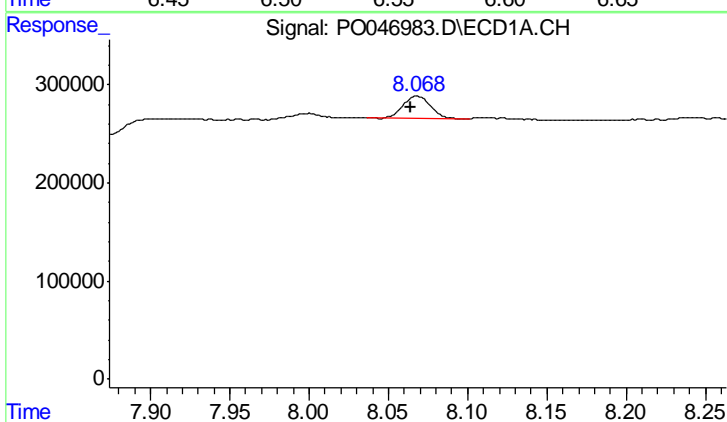
Manual Integrations
 APPROVED

Sohil
 7/23/2018 2:28:44 PM



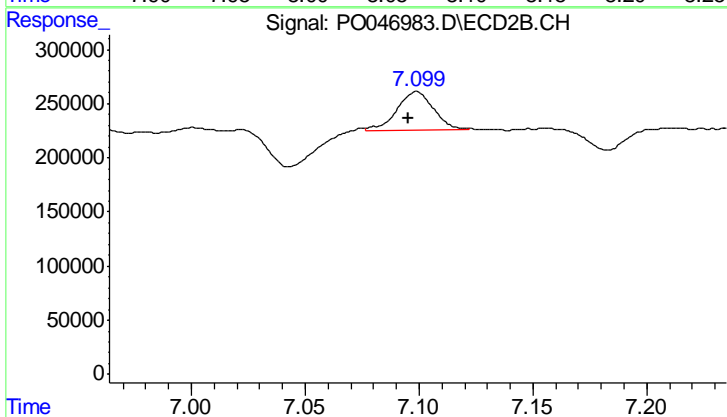
#33 AR-1260-3

R.T.: 6.564 min
 Delta R.T.: 0.005 min
 Response: 511999
 Conc: 23.18 ng/ml



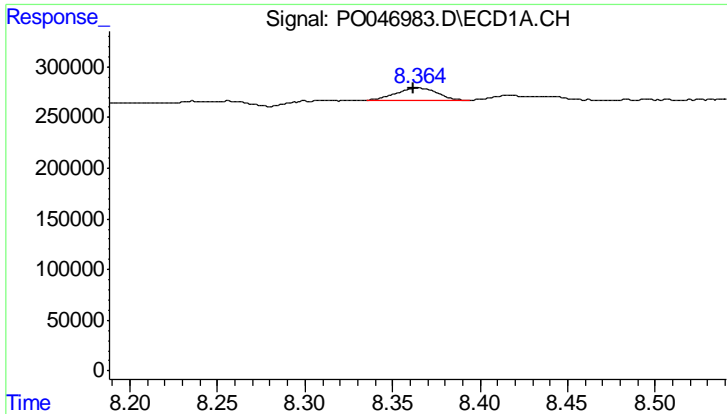
#34 AR-1260-4

R.T.: 8.068 min
 Delta R.T.: 0.004 min
 Response: 266372
 Conc: 11.70 ng/ml



#34 AR-1260-4

R.T.: 7.099 min
 Delta R.T.: 0.003 min
 Response: 394477
 Conc: 10.67 ng/ml m



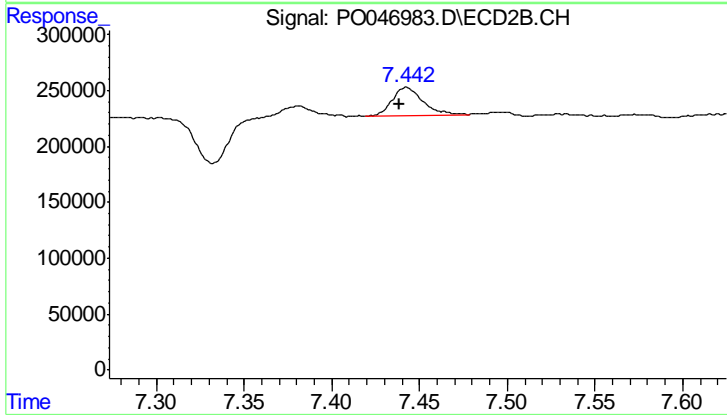
#35 AR-1260-5

R.T.: 8.364 min
 Delta R.T.: 0.002 min
 Response: 193259
 Conc: 13.64 ng/ml

Instrument :
 ECD_O
 ClientSampled :
 TP-8

Manual Integrations
 APPROVED

Sohil
 7/23/2018 2:28:44 PM



#35 AR-1260-5

R.T.: 7.442 min
 Delta R.T.: 0.004 min
 Response: 298238
 Conc: 11.76 ng/ml m