

Data Path : Z:\pestpcbsrv\HPCHEM1\ECD_0\Data\P0072123\
 Data File : P0096245.D
 Signal(s) : Signal #1: ECD1A.ch Signal #2: ECD2B.ch
 Acq On : 22 Jul 2023 16:01
 Operator : YP/AJ
 Sample : 03706-01
 Misc :
 ALS Vial : 55 Sample Multiplier: 1

Instrument :
 ECD_0
 ClientSampleId :
 B-P9A

Integration File signal 1: autoint1.e
 Integration File signal 2: autoint2.e
 Quant Time: Jul 23 20:14:49 2023
 Quant Method : Z:\pestpcbsrv\HPCHEM1\ECD_0\methods\P0072123.M
 Quant Title : GC EXTRACTABLES
 QLast Update : Sat Jul 22 12:20:47 2023
 Response via : Initial Calibration
 Integrator: ChemStation

Volume Inj. : 2 µl
 Signal #1 Phase : ZB-MR1 Signal #2 Phase: ZB-MR2
 Signal #1 Info : 30Mx0.32mmx 0.50µ Signal #2 Info : 30M x 0.32mm x 0.25µm

Compound	RT#1	RT#2	Resp#1	Resp#2	ng/ml	ng/ml

System Monitoring Compounds						
1) SA Tetrachlo...	4.411	3.628	52658025	21932640	16.725	16.711
2) SA Decachlor...	10.239	8.663	30472967	16999046	15.486	15.603

Target Compounds

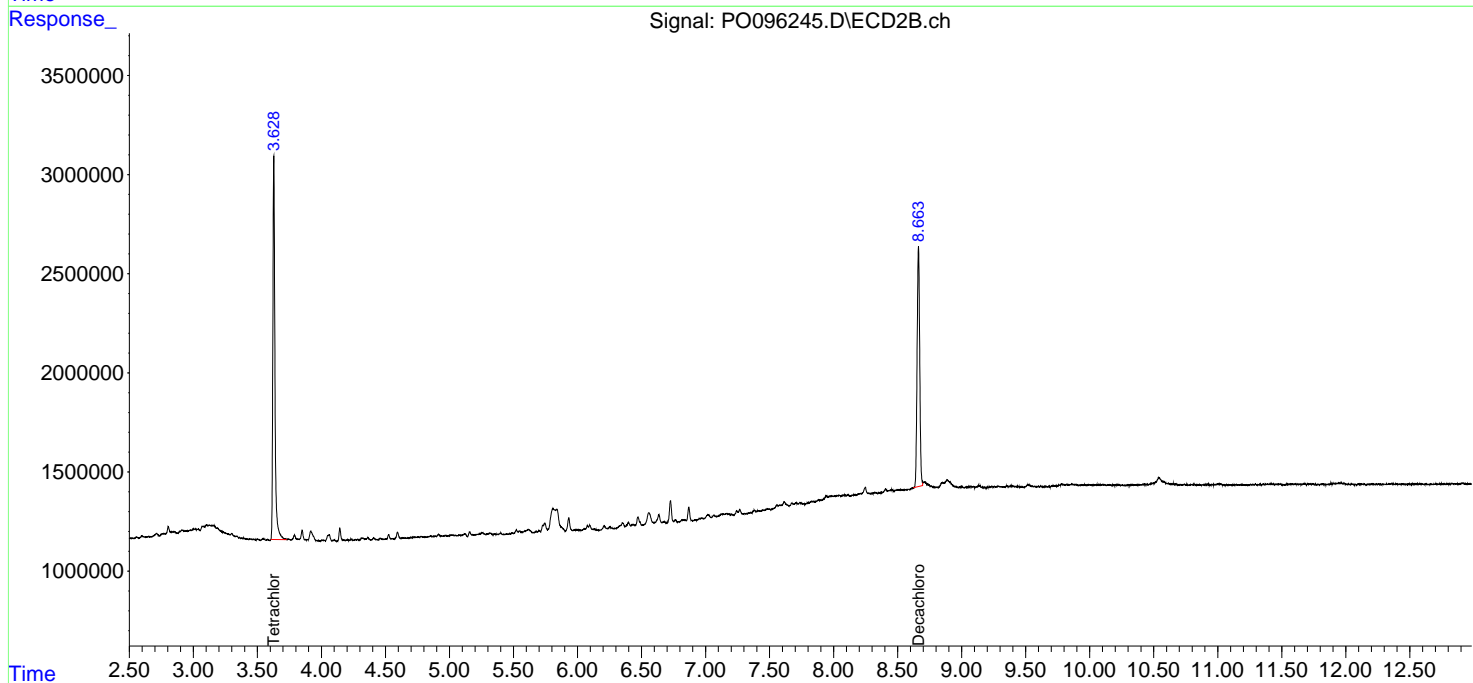
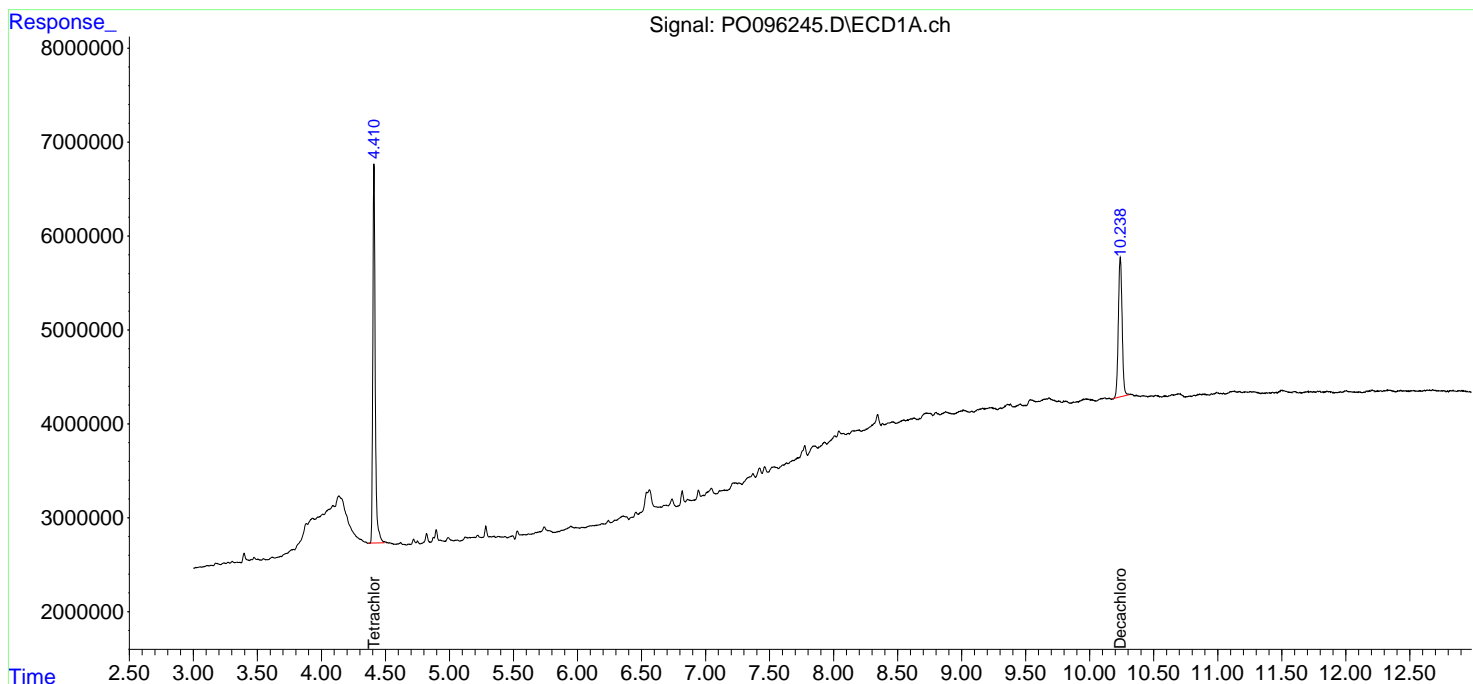
(f)=RT Delta > 1/2 Window (#)=Amounts differ by > 25% (m)=manual int.

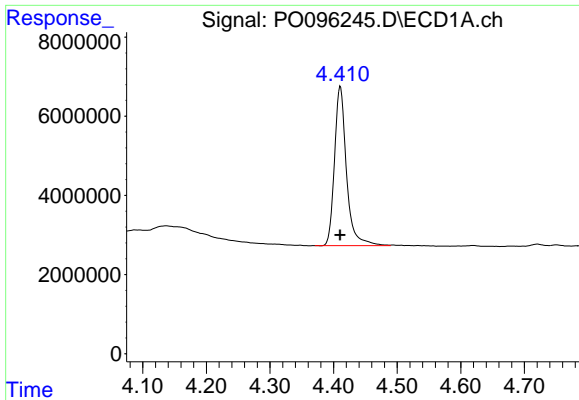
Data Path : Z:\pestpcbsrv\HPCHEM1\ECD_O\Data\P0072123\
 Data File : P0096245.D
 Signal(s) : Signal #1: ECD1A.ch Signal #2: ECD2B.ch
 Acq On : 22 Jul 2023 16:01
 Operator : YP/AJ
 Sample : 03706-01
 Misc :
 ALS Vial : 55 Sample Multiplier: 1

Instrument :
 ECD_O
 ClientSampleId :
 B-P9A

Integration File signal 1: autoint1.e
 Integration File signal 2: autoint2.e
 Quant Time: Jul 23 20:14:49 2023
 Quant Method : Z:\pestpcbsrv\HPCHEM1\ECD_O\methods\P0072123.M
 Quant Title : GC EXTRACTABLES
 QLast Update : Sat Jul 22 12:20:47 2023
 Response via : Initial Calibration
 Integrator: ChemStation

Volume Inj. : 2 µl
 Signal #1 Phase : ZB-MR1 Signal #2 Phase: ZB-MR2
 Signal #1 Info : 30Mx0.32mmx 0.50µ Signal #2 Info : 30M x 0.32mm x 0.25µm

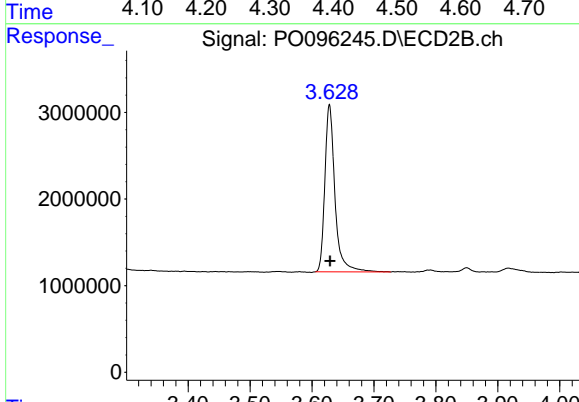




#1 Tetrachloro-m-xylene

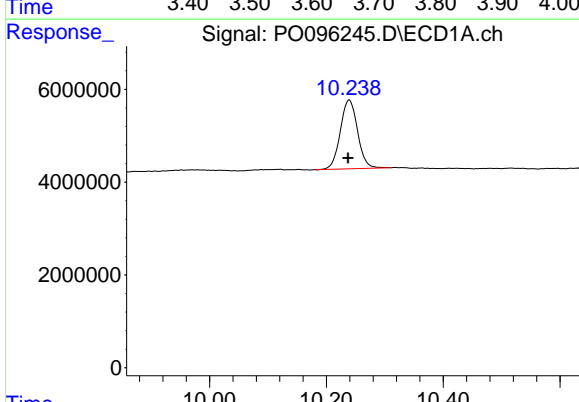
R.T.: 4.411 min
 Delta R.T.: 0.000 min
 Response: 52658025
 Conc: 16.73 ng/ml

Instrument :
 ECD_O
 ClientSampleId :
 B-P9A



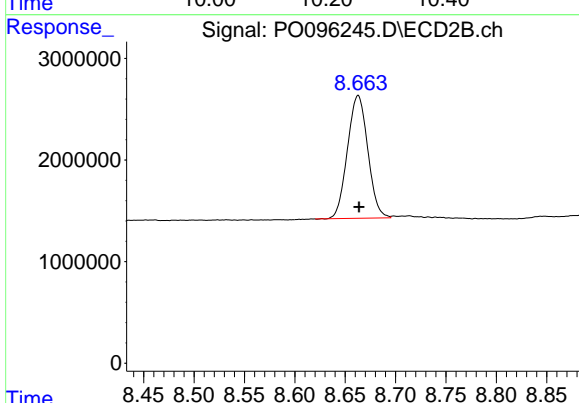
#1 Tetrachloro-m-xylene

R.T.: 3.628 min
 Delta R.T.: 0.000 min
 Response: 21932640
 Conc: 16.71 ng/ml



#2 Decachlorobiphenyl

R.T.: 10.239 min
 Delta R.T.: 0.002 min
 Response: 30472967
 Conc: 15.49 ng/ml



#2 Decachlorobiphenyl

R.T.: 8.663 min
 Delta R.T.: 0.000 min
 Response: 16999046
 Conc: 15.60 ng/ml