

Data Path : Z:\pestpcbsrv\HPCHEM1\ECD\_0\Data\P0072222\  
 Data File : P0088276.D  
 Signal(s) : Signal #1: ECD1A.ch Signal #2: ECD2B.ch  
 Acq On : 22 Jul 2022 17:17  
 Operator : YP/AJ  
 Sample : I.BLK  
 Misc :  
 ALS Vial : 2 Sample Multiplier: 1

Instrument :  
 ECD\_0  
 ClientSampleId :

Integration File signal 1: autoint1.e  
 Integration File signal 2: autoint2.e  
 Quant Time: Jul 22 22:46:58 2022  
 Quant Method : Z:\pestpcbsrv\HPCHEM1\ECD\_0\methods\P0071422.M  
 Quant Title : GC EXTRACTABLES  
 QLast Update : Fri Jul 15 03:57:23 2022  
 Response via : Initial Calibration  
 Integrator: ChemStation

Volume Inj. : 2 µl  
 Signal #1 Phase : ZB-MR1 Signal #2 Phase: ZB-MR2  
 Signal #1 Info : 30Mx0.32mmx 0.50µ Signal #2 Info : 30M x 0.32mm x 0.25µm

Compound	RT#1	RT#2	Resp#1	Resp#2	ng/ml	ng/ml
-----						
System Monitoring Compounds						
1) SA Tetrachlo...	4.446	3.606	47319302	17767032	18.548	18.831
2) SA Decachlor...	10.295	8.603	37009326	18816898	17.427	18.006
Target Compounds						
3) L1 AR-1016-1	5.645	4.694	222165	325815	2.533	9.055 #
4) L1 AR-1016-2	5.645	4.694	222165	325815	1.771	6.377 #
5) L1 AR-1016-3	5.693	4.927f	498122	242616	6.422	8.739 #
6) L1 AR-1016-4	0.000	4.927	0	242616	N.D.	10.430 #
7) L1 AR-1016-5	6.149f	5.085f	355685	831134	5.731	28.083 #
8) L2 AR-1221-1	4.653	0.000	210265	0	6.949	N.D. #
9) L2 AR-1221-2	4.754	3.903	951476	376180	42.925	47.433
10) L2 AR-1221-3	4.876f	0.000	351168	0	5.096	N.D. #
11) L3 AR-1232-1	4.876f	0.000	351168	0	6.758	N.D. #
12) L3 AR-1232-2	5.195f	4.694	200016	325815	7.802	16.521 #
13) L3 AR-1232-3	5.645	4.927f	222165	242616	4.620	23.827 #
14) L3 AR-1232-4	0.000	5.001f	0	586593	N.D.	60.386 #
15) L3 AR-1232-5	0.000	5.085f	0	831134	N.D.	76.419 #
16) L4 AR-1242-1	5.645	4.694	222165	325815	3.254	11.199 #
17) L4 AR-1242-2	5.645	4.694	222165	325815	2.294	8.044 #
18) L4 AR-1242-3	5.693	4.927f	498122	242616	8.210	10.980 #
19) L4 AR-1242-4	0.000	5.001f	0	586593	N.D.	25.088 #
20) L4 AR-1242-5	6.533	5.508	317321	379576	6.025	14.163 #
21) L5 AR-1248-1	5.645	4.694	222165	325815	4.158	14.224 #
22) L5 AR-1248-2	0.000	4.927	0	242616	N.D.	7.192 #
23) L5 AR-1248-3	6.149f	5.001f	355685	586593	4.249	16.879 #
24) L5 AR-1248-4	6.523	5.085f	888673	831134	9.669	19.853 #
25) L5 AR-1248-5	6.533	5.508	317321	379576	3.528	10.535 #
26) L6 AR-1254-1	6.483	5.508	1678989	379576	17.708	6.584 #
27) L6 AR-1254-2	6.708	0.000	4092101	0	28.505	N.D. #
28) L6 AR-1254-3	7.074	6.072	5008324	3416081	34.192	42.096
29) L6 AR-1254-4	7.350	6.242	698086	935170	6.450	18.751 #
30) L6 AR-1254-5	7.797	6.677	1169172	186117	9.714	2.464 #
31) L7 AR-1260-1	7.234	6.161	1286299	797811	11.055	14.720 #
32) L7 AR-1260-2	7.507	6.337	1777216	700455	13.153	10.787
33) L7 AR-1260-3	7.860	6.492	974574	500024	10.645	8.039
34) L7 AR-1260-4	8.091	6.977	165807	635674	1.535	13.439 #
35) L7 AR-1260-5	8.409	7.220	1309930	902441	6.384	7.887
36) L8 AR-1262-1	7.860	0.000	974574	0	7.095	N.D. #
37) L8 AR-1262-2	8.409	7.220	1309930	902441	5.566	6.716
38) L8 AR-1262-3	8.788f	7.566f	312019	2360373	1.883	43.281 #
39) L8 AR-1262-4	8.825	7.566	40071	2360373	0.480	23.332 #
40) L8 AR-1262-5	9.511	0.000	2583961	0	28.994	N.D. #
41) L9 AR-1268-1	8.788f	7.566f	312019	2360373	1.103	14.897 #

Data Path : Z:\pestpcbsrv\HPCHEM1\ECD\_0\Data\P0072222\  
 Data File : P0088276.D  
 Signal(s) : Signal #1: ECD1A.ch Signal #2: ECD2B.ch  
 Acq On : 22 Jul 2022 17:17  
 Operator : YP/AJ  
 Sample : I.BLK  
 Misc :  
 ALS Vial : 2 Sample Multiplier: 1

Instrument :  
 ECD\_0  
 ClientSampleId :

Integration File signal 1: autoint1.e  
 Integration File signal 2: autoint2.e  
 Quant Time: Jul 22 22:46:58 2022  
 Quant Method : Z:\pestpcbsrv\HPCHEM1\ECD\_0\methods\P0071422.M  
 Quant Title : GC EXTRACTABLES  
 QLast Update : Fri Jul 15 03:57:23 2022  
 Response via : Initial Calibration  
 Integrator: ChemStation

Volume Inj. : 2 µl  
 Signal #1 Phase : ZB-MR1 Signal #2 Phase: ZB-MR2  
 Signal #1 Info : 30Mx0.32mmx 0.50µ Signal #2 Info : 30M x 0.32mm x 0.25µm

	Compound	RT#1	RT#2	Resp#1	Resp#2	ng/ml	ng/ml
42)	L9 AR-1268-2	8.825	7.566	40071	2360373	0.154	16.410 #
43)	L9 AR-1268-3	9.079	7.748	495704	2220478	2.214	17.827 #
44)	L9 AR-1268-4	9.511	0.000	2583961	0	26.355	N.D. #
45)	L9 AR-1268-5	9.944	8.351	368358	701000	0.507	1.813 #

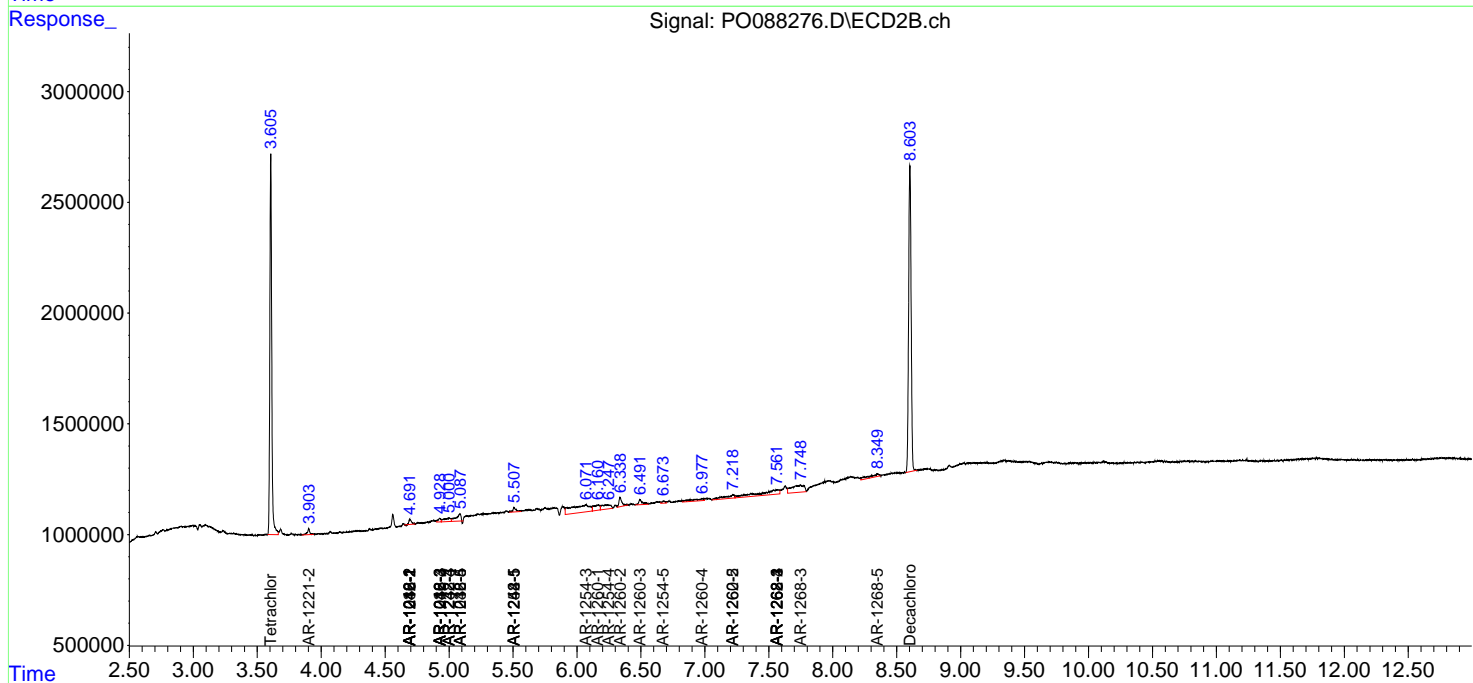
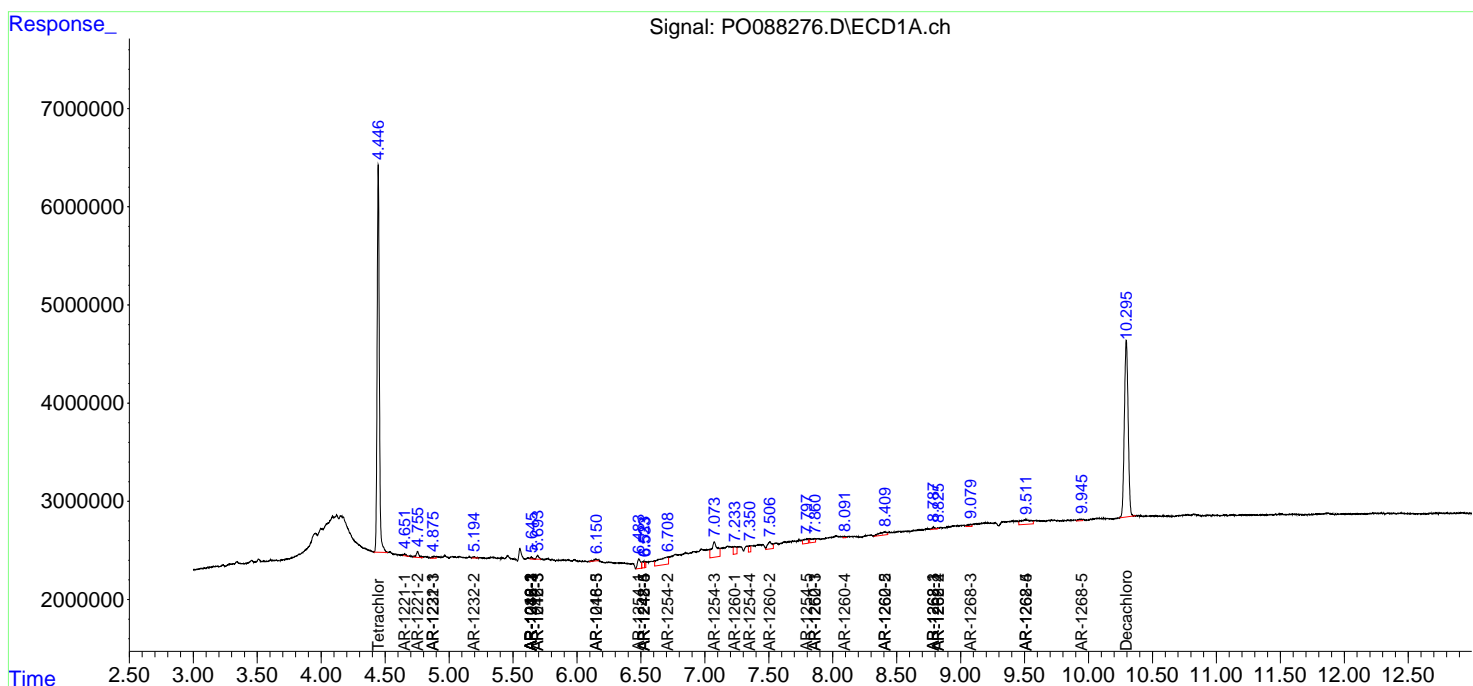
(f)=RT Delta > 1/2 Window (#)=Amounts differ by > 25% (m)=manual int.

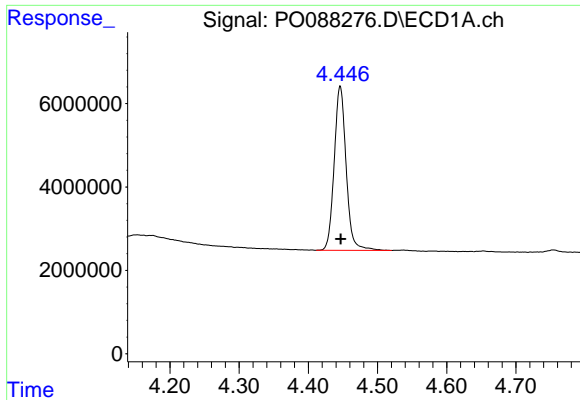
Data Path : Z:\pestpcbsrv\HPCHEM1\ECD\_O\Data\P0072222\  
 Data File : P0088276.D  
 Signal(s) : Signal #1: ECD1A.ch Signal #2: ECD2B.ch  
 Acq On : 22 Jul 2022 17:17  
 Operator : YP/AJ  
 Sample : I.BLK  
 Misc :  
 ALS Vial : 2 Sample Multiplier: 1

Instrument :  
 ECD\_O  
 ClientSampleId :

Integration File signal 1: autoint1.e  
 Integration File signal 2: autoint2.e  
 Quant Time: Jul 22 22:46:58 2022  
 Quant Method : Z:\pestpcbsrv\HPCHEM1\ECD\_O\methods\P0071422.M  
 Quant Title : GC EXTRACTABLES  
 QLast Update : Fri Jul 15 03:57:23 2022  
 Response via : Initial Calibration  
 Integrator: ChemStation

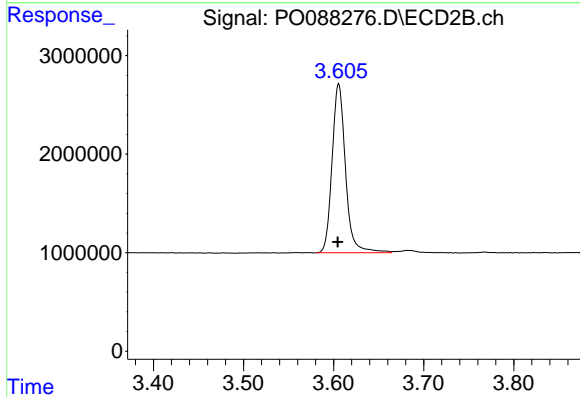
Volume Inj. : 2 µl  
 Signal #1 Phase : ZB-MR1 Signal #2 Phase: ZB-MR2  
 Signal #1 Info : 30Mx0.32mmx 0.50µ Signal #2 Info : 30M x 0.32mm x 0.25µm



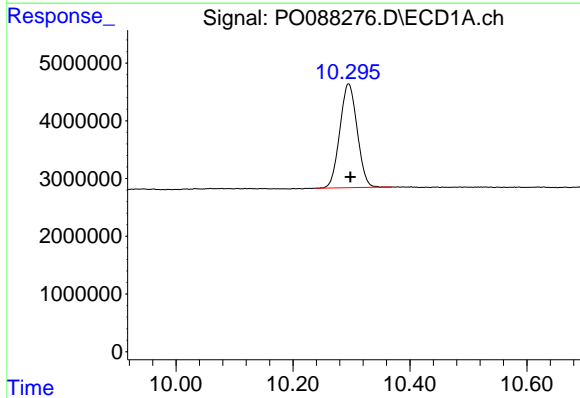


#1 Tetrachloro-m-xylene  
 R.T.: 4.446 min  
 Delta R.T.: 0.000 min  
 Response: 47319302  
 Conc: 18.55 ng/ml

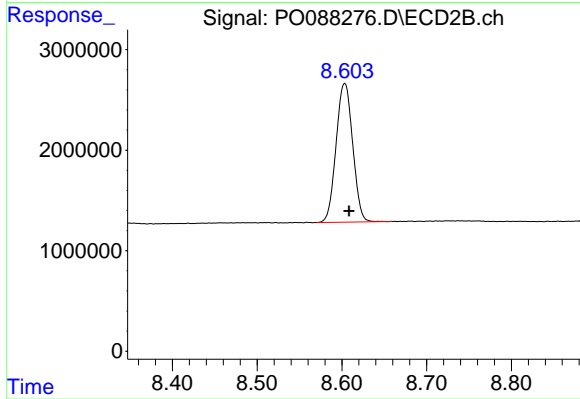
Instrument :  
 ECD\_O  
 ClientSampleId :



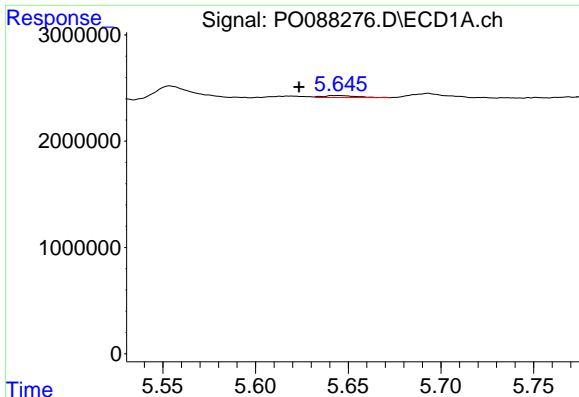
#1 Tetrachloro-m-xylene  
 R.T.: 3.606 min  
 Delta R.T.: 0.001 min  
 Response: 17767032  
 Conc: 18.83 ng/ml



#2 Decachlorobiphenyl  
 R.T.: 10.295 min  
 Delta R.T.: -0.003 min  
 Response: 37009326  
 Conc: 17.43 ng/ml



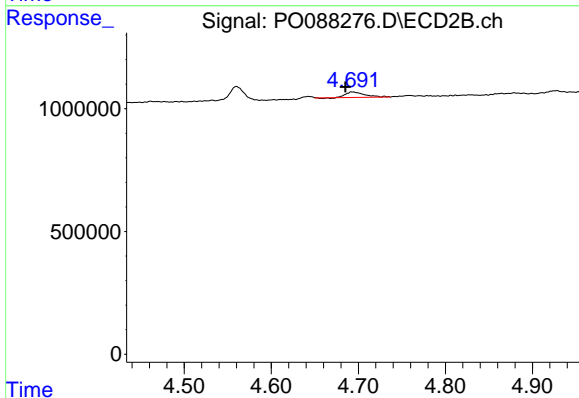
#2 Decachlorobiphenyl  
 R.T.: 8.603 min  
 Delta R.T.: -0.005 min  
 Response: 18816898  
 Conc: 18.01 ng/ml



#3 AR-1016-1

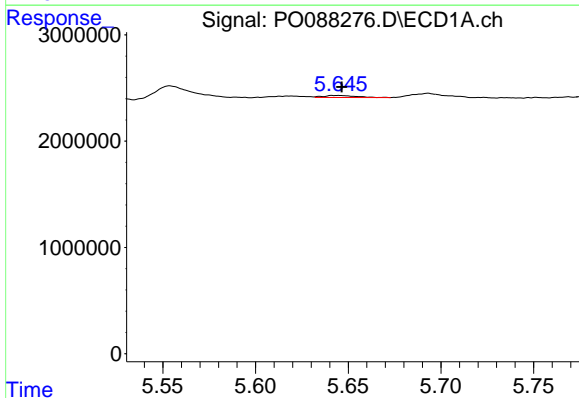
R.T.: 5.645 min  
 Delta R.T.: 0.021 min  
 Response: 222165  
 Conc: 2.53 ng/ml

Instrument :  
 ECD\_O  
 ClientSampleId :



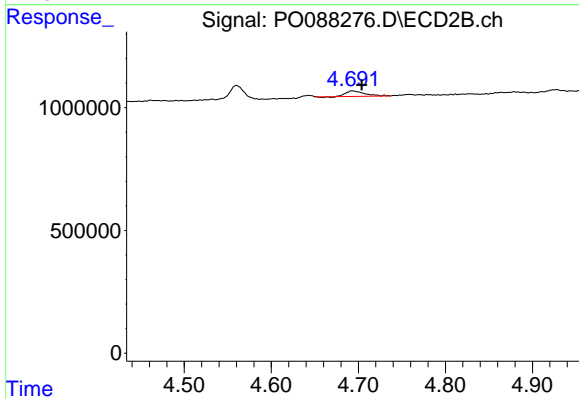
#3 AR-1016-1

R.T.: 4.694 min  
 Delta R.T.: 0.009 min  
 Response: 325815  
 Conc: 9.06 ng/ml



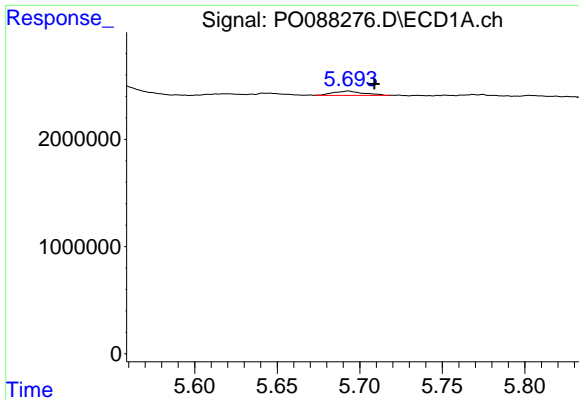
#4 AR-1016-2

R.T.: 5.645 min  
 Delta R.T.: -0.002 min  
 Response: 222165  
 Conc: 1.77 ng/ml



#4 AR-1016-2

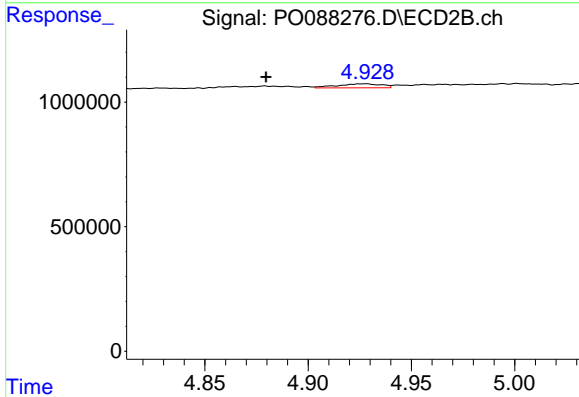
R.T.: 4.694 min  
 Delta R.T.: -0.010 min  
 Response: 325815  
 Conc: 6.38 ng/ml



#5 AR-1016-3

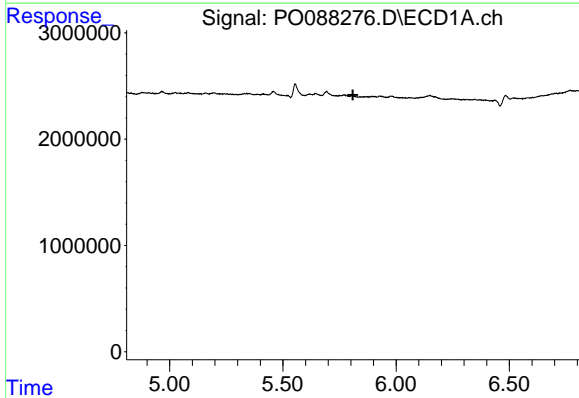
R.T.: 5.693 min  
 Delta R.T.: -0.016 min  
 Response: 498122  
 Conc: 6.42 ng/ml

Instrument :  
 ECD\_O  
 ClientSampleId :



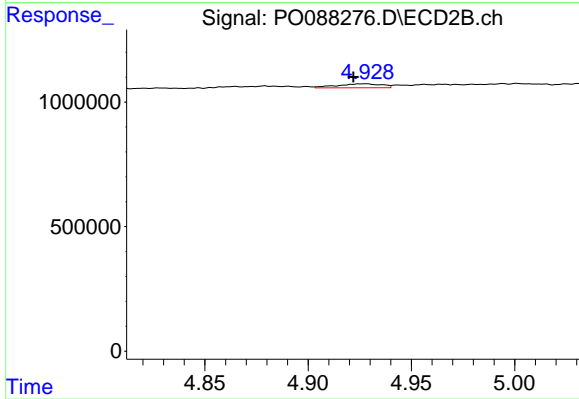
#5 AR-1016-3

R.T.: 4.927 min  
 Delta R.T.: 0.047 min  
 Response: 242616  
 Conc: 8.74 ng/ml



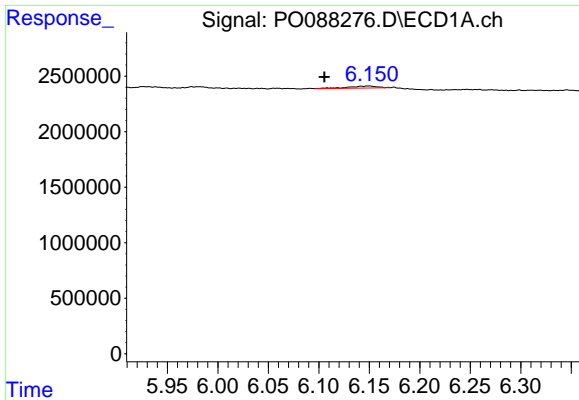
#6 AR-1016-4

R.T.: 0.000 min  
 Exp R.T. : 5.809 min  
 Response: 0  
 Conc: N.D.



#6 AR-1016-4

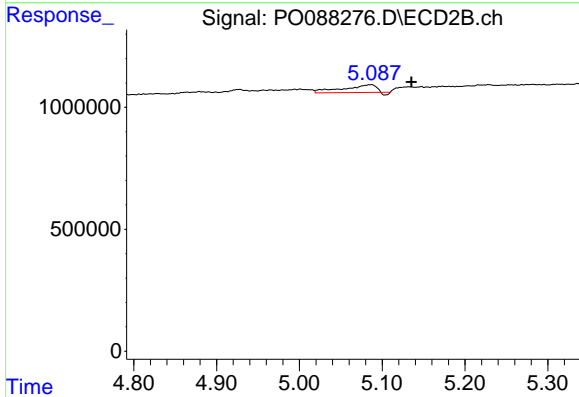
R.T.: 4.927 min  
 Delta R.T.: 0.005 min  
 Response: 242616  
 Conc: 10.43 ng/ml



#7 AR-1016-5

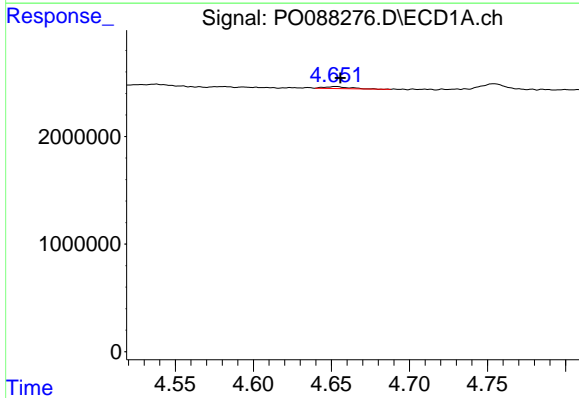
R.T.: 6.149 min  
 Delta R.T.: 0.044 min  
 Response: 355685  
 Conc: 5.73 ng/ml

Instrument :  
 ECD\_O  
 ClientSampleId :



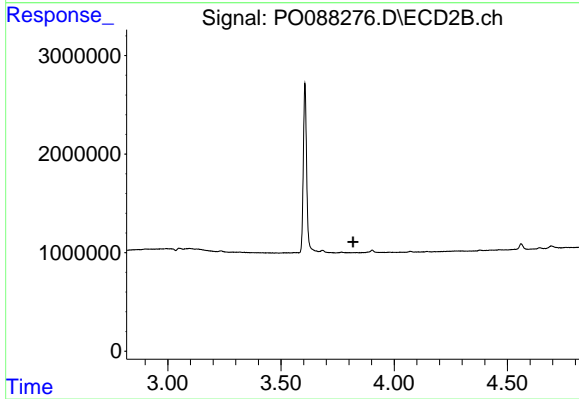
#7 AR-1016-5

R.T.: 5.085 min  
 Delta R.T.: -0.050 min  
 Response: 831134  
 Conc: 28.08 ng/ml



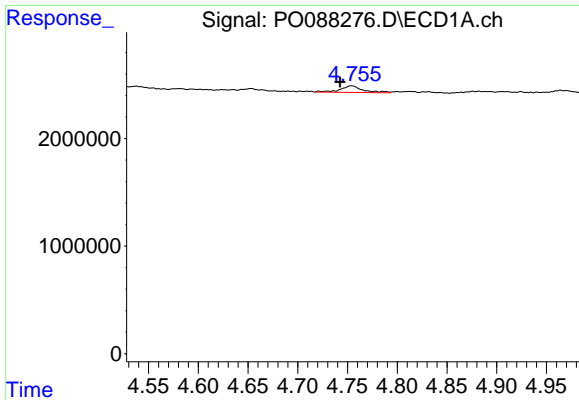
#8 AR-1221-1

R.T.: 4.653 min  
 Delta R.T.: -0.003 min  
 Response: 210265  
 Conc: 6.95 ng/ml



#8 AR-1221-1

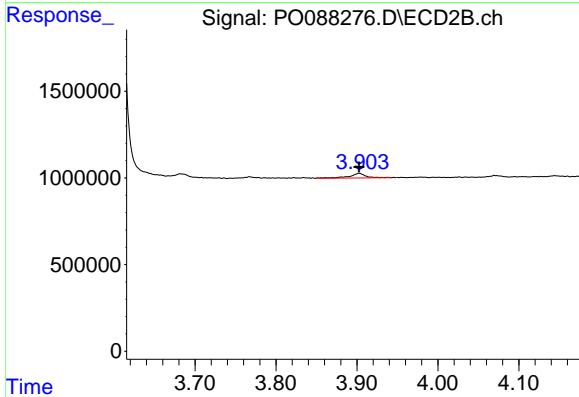
R.T.: 0.000 min  
 Exp R.T. : 3.818 min  
 Response: 0  
 Conc: N.D.



#9 AR-1221-2

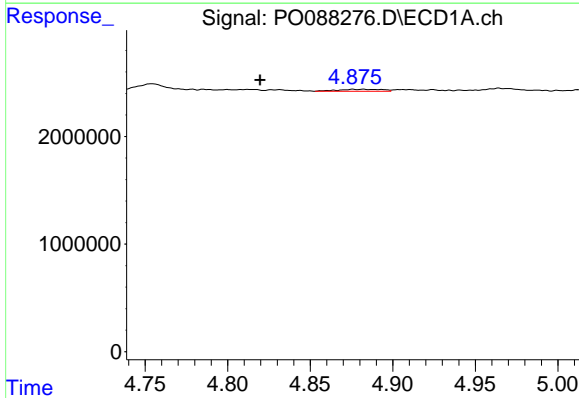
R.T.: 4.754 min  
 Delta R.T.: 0.012 min  
 Response: 951476  
 Conc: 42.93 ng/ml

Instrument :  
 ECD\_O  
 ClientSampleId :



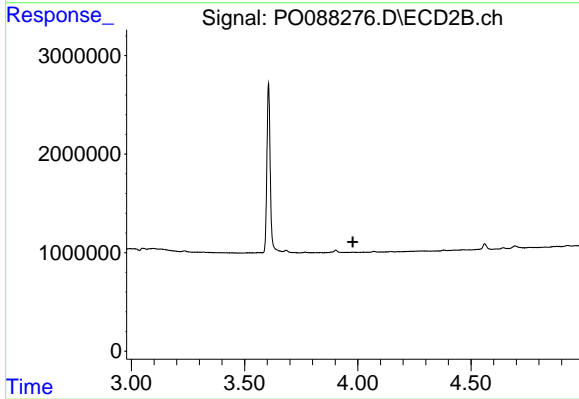
#9 AR-1221-2

R.T.: 3.903 min  
 Delta R.T.: 0.000 min  
 Response: 376180  
 Conc: 47.43 ng/ml



#10 AR-1221-3

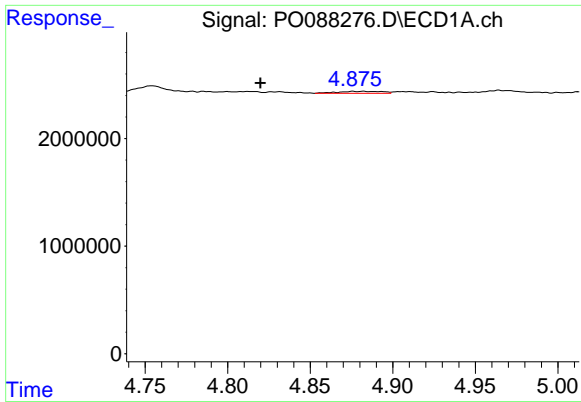
R.T.: 4.876 min  
 Delta R.T.: 0.056 min  
 Response: 351168  
 Conc: 5.10 ng/ml



#10 AR-1221-3

R.T.: 0.000 min  
 Exp R.T. : 3.978 min  
 Response: 0  
 Conc: N.D.

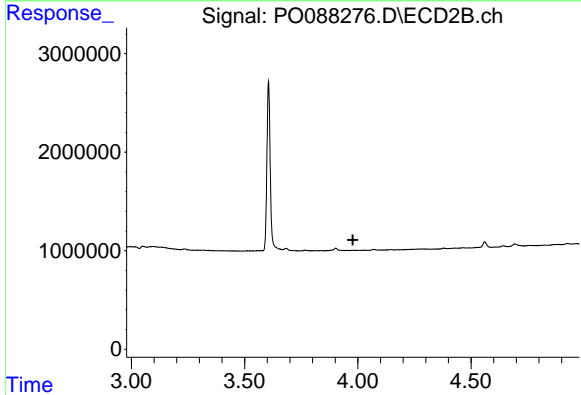




#11 AR-1232-1

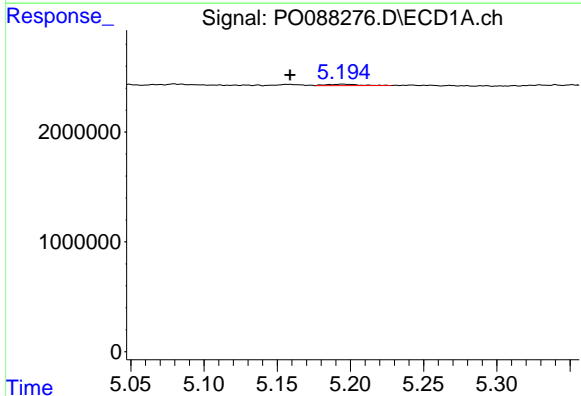
R.T.: 4.876 min  
 Delta R.T.: 0.056 min  
 Response: 351168  
 Conc: 6.76 ng/ml

Instrument :  
 ECD\_O  
 ClientSampleId :



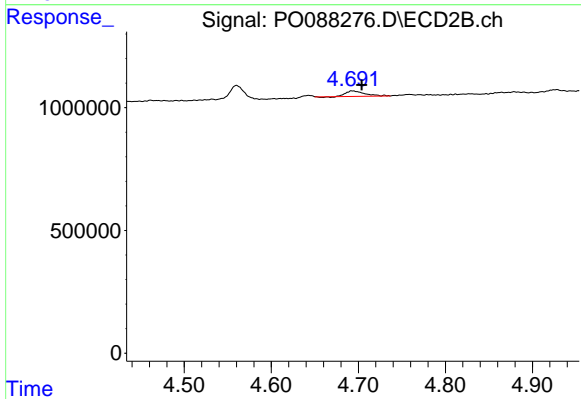
#11 AR-1232-1

R.T.: 0.000 min  
 Exp R.T. : 3.978 min  
 Response: 0  
 Conc: N.D.



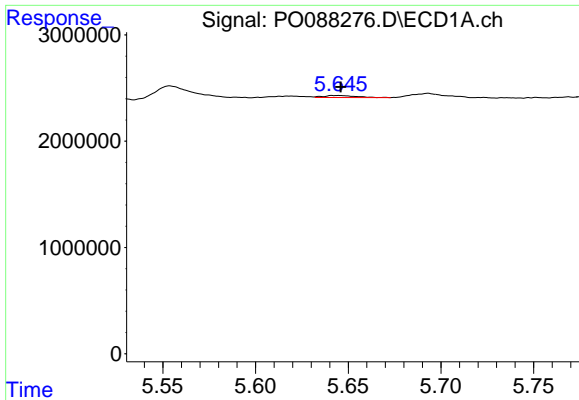
#12 AR-1232-2

R.T.: 5.195 min  
 Delta R.T.: 0.036 min  
 Response: 200016  
 Conc: 7.80 ng/ml



#12 AR-1232-2

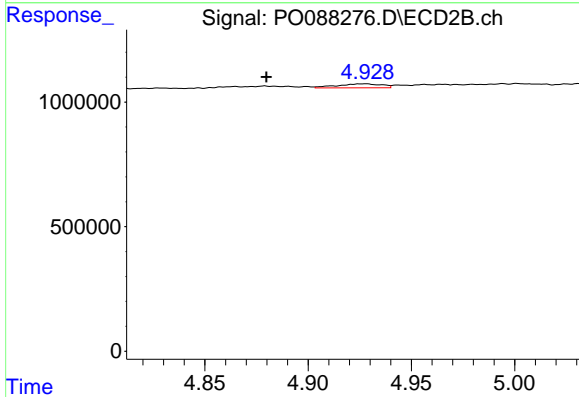
R.T.: 4.694 min  
 Delta R.T.: -0.010 min  
 Response: 325815  
 Conc: 16.52 ng/ml



#13 AR-1232-3

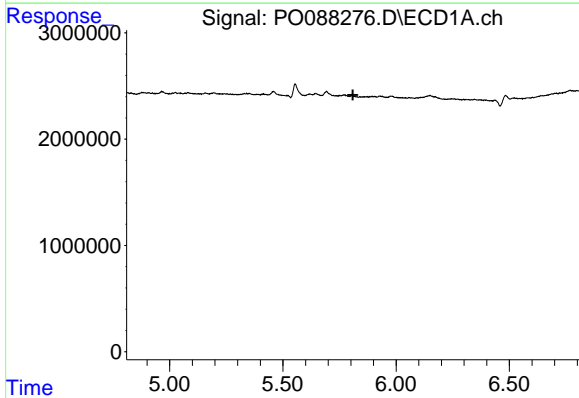
R.T.: 5.645 min  
 Delta R.T.: -0.001 min  
 Response: 222165  
 Conc: 4.62 ng/ml

Instrument :  
 ECD\_O  
 ClientSampleId :



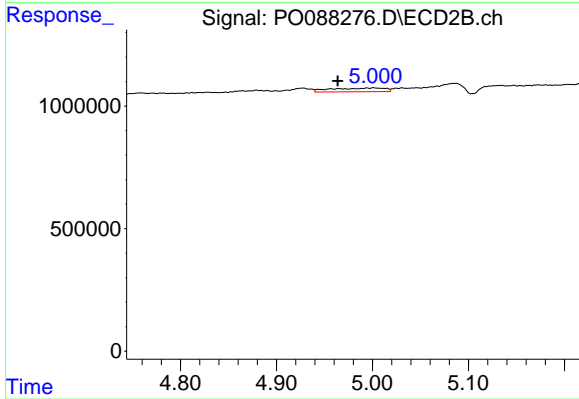
#13 AR-1232-3

R.T.: 4.927 min  
 Delta R.T.: 0.047 min  
 Response: 242616  
 Conc: 23.83 ng/ml



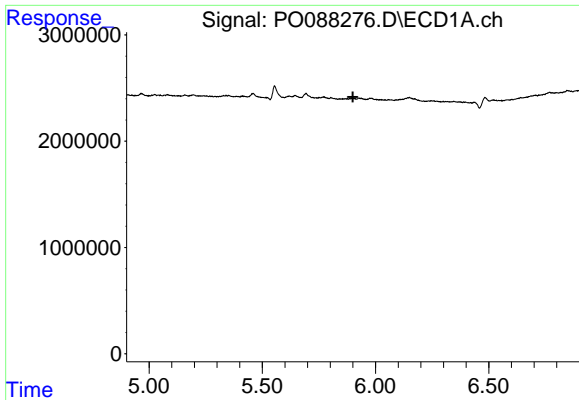
#14 AR-1232-4

R.T.: 0.000 min  
 Exp R.T. : 5.809 min  
 Response: 0  
 Conc: N.D.



#14 AR-1232-4

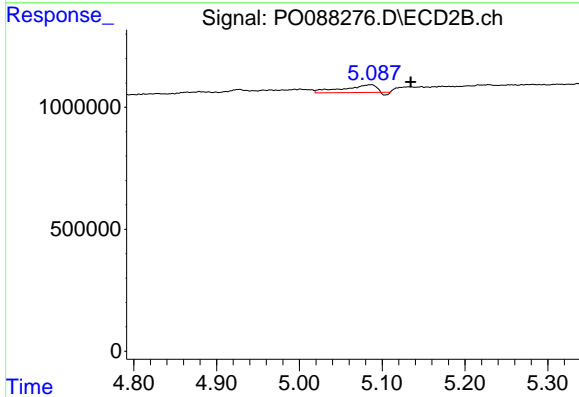
R.T.: 5.001 min  
 Delta R.T.: 0.037 min  
 Response: 586593  
 Conc: 60.39 ng/ml



#15 AR-1232-5

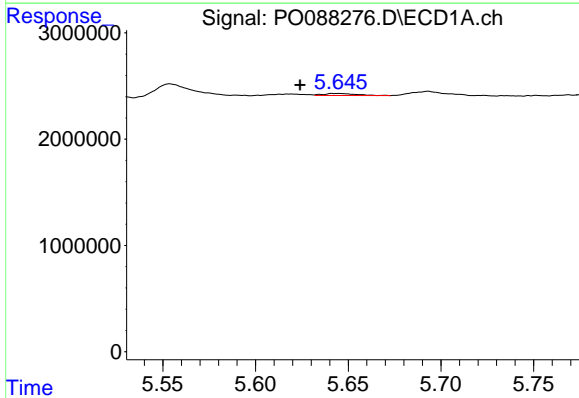
R.T.: 0.000 min  
 Exp R.T.: 5.900 min  
 Response: 0  
 Conc: N.D.

Instrument :  
 ECD\_O  
 ClientSampleId :



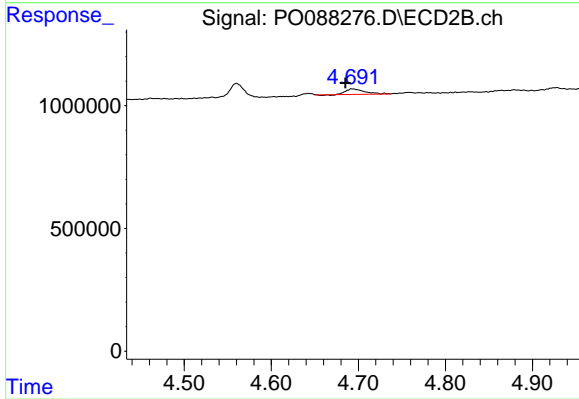
#15 AR-1232-5

R.T.: 5.085 min  
 Delta R.T.: -0.049 min  
 Response: 831134  
 Conc: 76.42 ng/ml



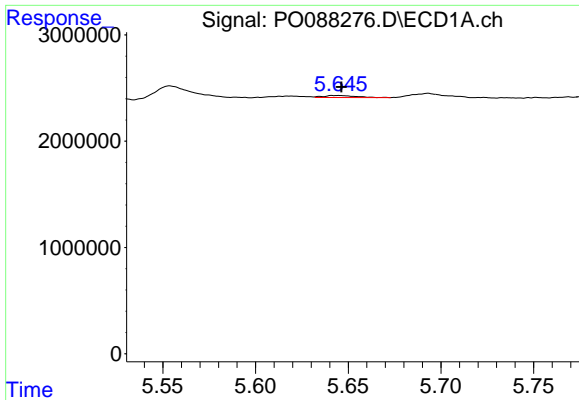
#16 AR-1242-1

R.T.: 5.645 min  
 Delta R.T.: 0.021 min  
 Response: 222165  
 Conc: 3.25 ng/ml



#16 AR-1242-1

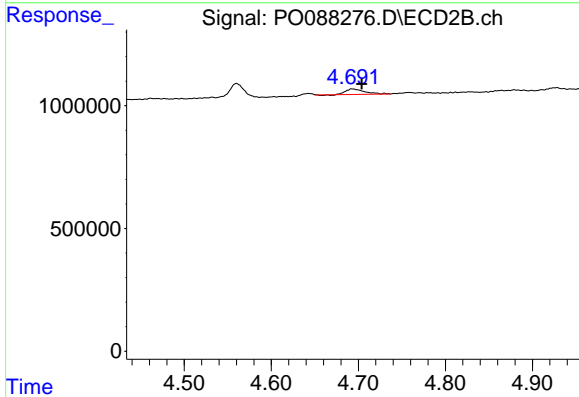
R.T.: 4.694 min  
 Delta R.T.: 0.009 min  
 Response: 325815  
 Conc: 11.20 ng/ml



#17 AR-1242-2

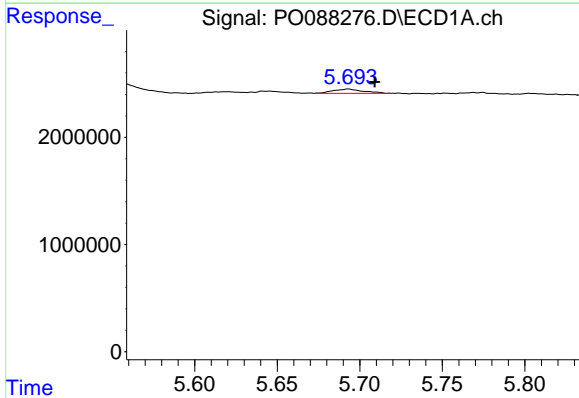
R.T.: 5.645 min  
 Delta R.T.: -0.002 min  
 Response: 222165  
 Conc: 2.29 ng/ml

Instrument :  
 ECD\_O  
 ClientSampleId :



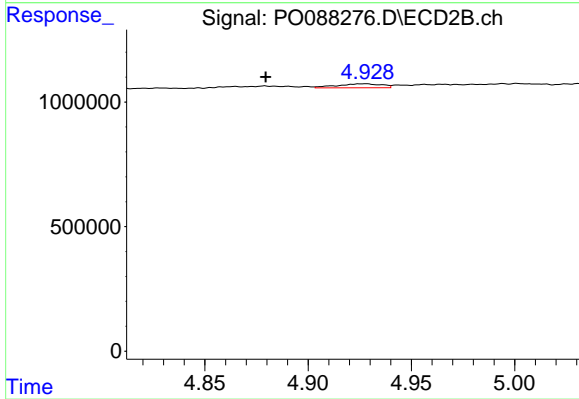
#17 AR-1242-2

R.T.: 4.694 min  
 Delta R.T.: -0.010 min  
 Response: 325815  
 Conc: 8.04 ng/ml



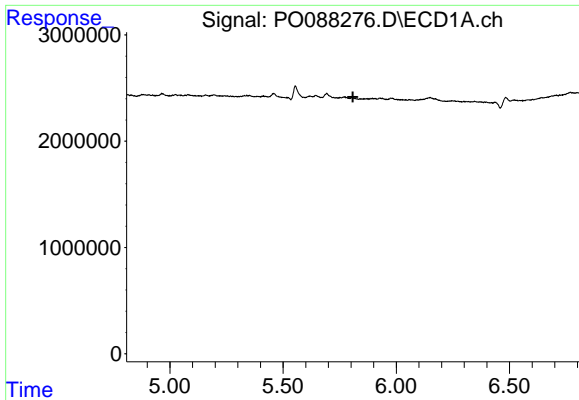
#18 AR-1242-3

R.T.: 5.693 min  
 Delta R.T.: -0.016 min  
 Response: 498122  
 Conc: 8.21 ng/ml



#18 AR-1242-3

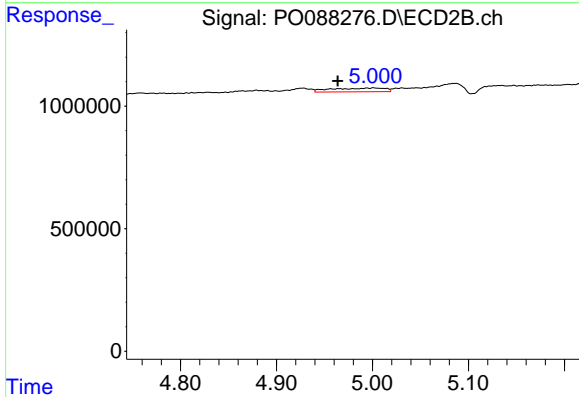
R.T.: 4.927 min  
 Delta R.T.: 0.047 min  
 Response: 242616  
 Conc: 10.98 ng/ml



#19 AR-1242-4

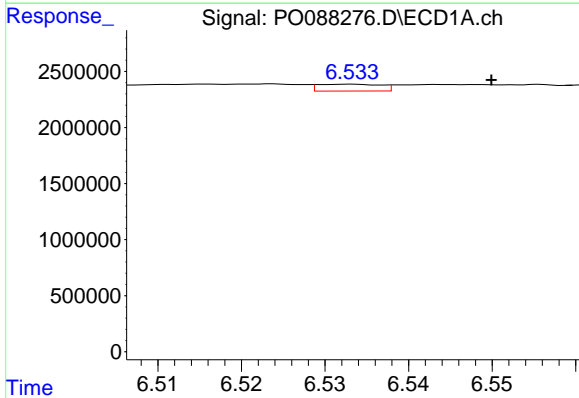
R.T.: 0.000 min  
 Exp R.T.: 5.808 min  
 Response: 0  
 Conc: N.D.

Instrument :  
 ECD\_O  
 ClientSampleId :



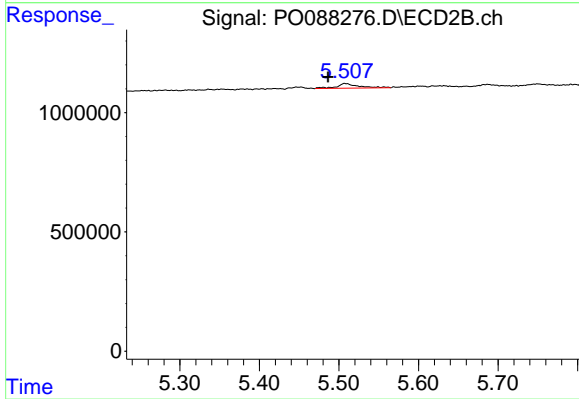
#19 AR-1242-4

R.T.: 5.001 min  
 Delta R.T.: 0.037 min  
 Response: 586593  
 Conc: 25.09 ng/ml



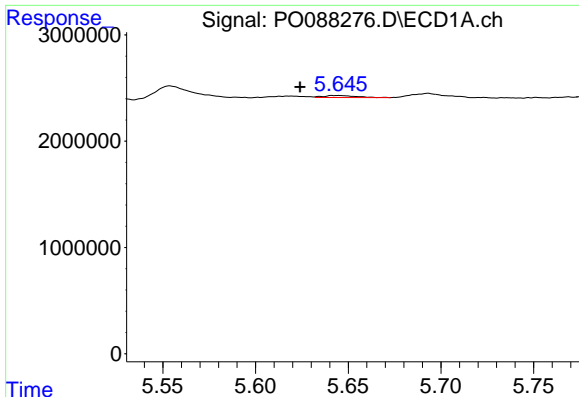
#20 AR-1242-5

R.T.: 6.533 min  
 Delta R.T.: -0.017 min  
 Response: 317321  
 Conc: 6.03 ng/ml



#20 AR-1242-5

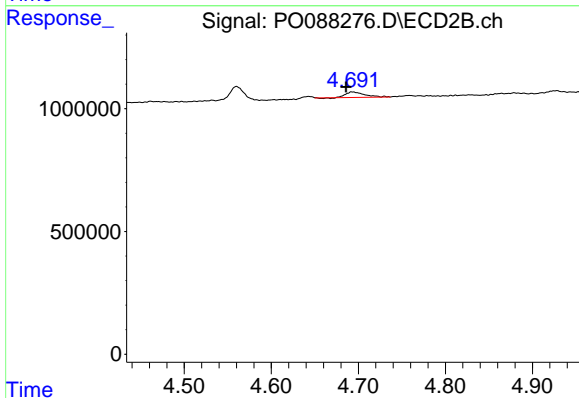
R.T.: 5.508 min  
 Delta R.T.: 0.022 min  
 Response: 379576  
 Conc: 14.16 ng/ml



#21 AR-1248-1

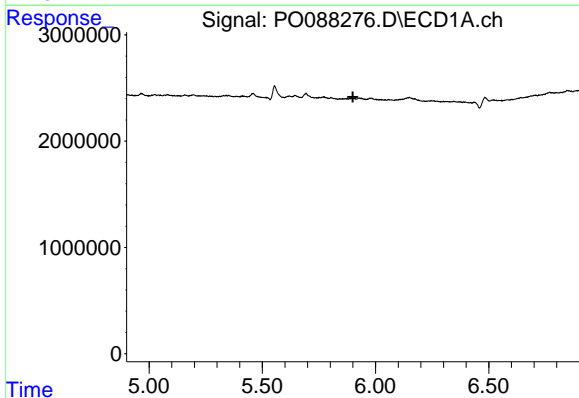
R.T.: 5.645 min  
 Delta R.T.: 0.021 min  
 Response: 222165  
 Conc: 4.16 ng/ml

Instrument :  
 ECD\_O  
 ClientSampleId :



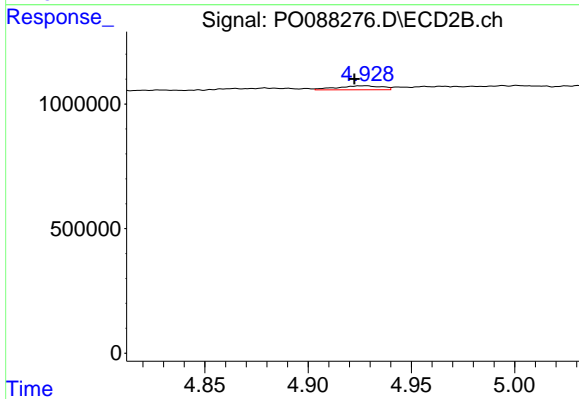
#21 AR-1248-1

R.T.: 4.694 min  
 Delta R.T.: 0.008 min  
 Response: 325815  
 Conc: 14.22 ng/ml



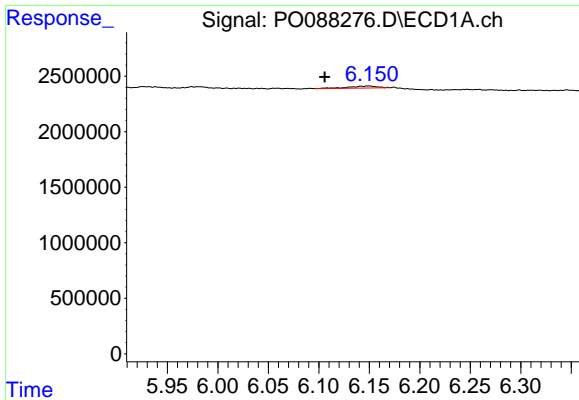
#22 AR-1248-2

R.T.: 0.000 min  
 Exp R.T. : 5.900 min  
 Response: 0  
 Conc: N.D.



#22 AR-1248-2

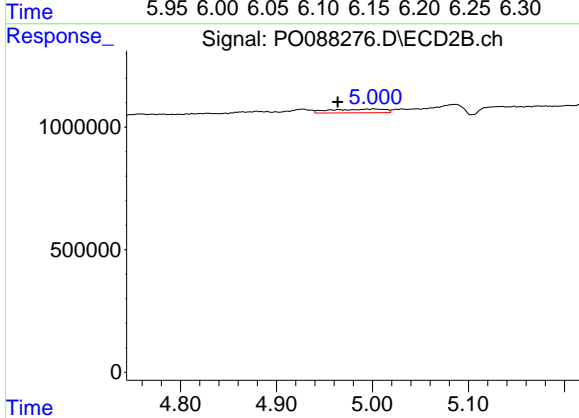
R.T.: 4.927 min  
 Delta R.T.: 0.004 min  
 Response: 242616  
 Conc: 7.19 ng/ml



#23 AR-1248-3

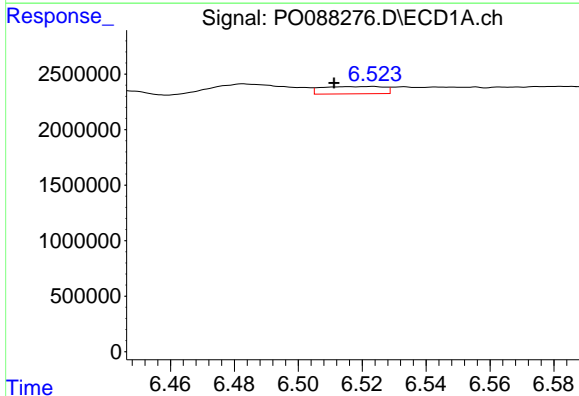
R.T.: 6.149 min  
 Delta R.T.: 0.044 min  
 Response: 355685  
 Conc: 4.25 ng/ml

Instrument :  
 ECD\_O  
 ClientSampleId :



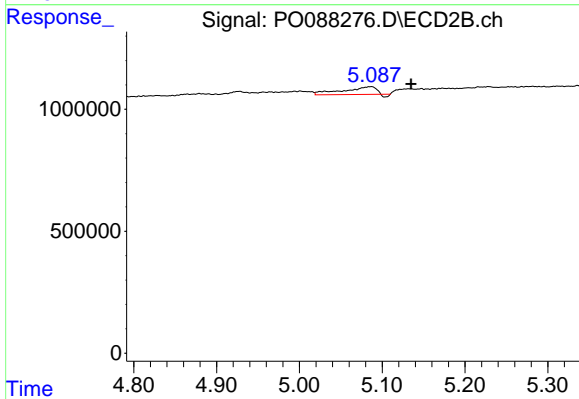
#23 AR-1248-3

R.T.: 5.001 min  
 Delta R.T.: 0.037 min  
 Response: 586593  
 Conc: 16.88 ng/ml



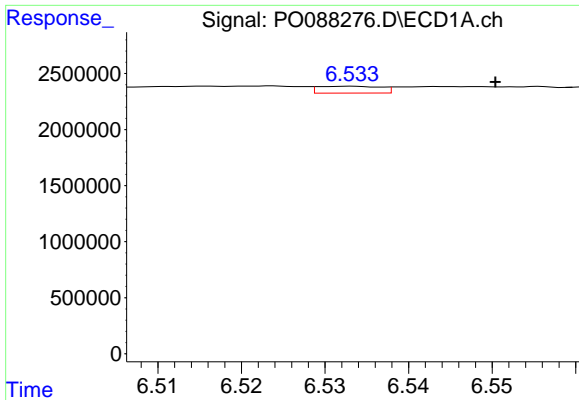
#24 AR-1248-4

R.T.: 6.523 min  
 Delta R.T.: 0.012 min  
 Response: 888673  
 Conc: 9.67 ng/ml



#24 AR-1248-4

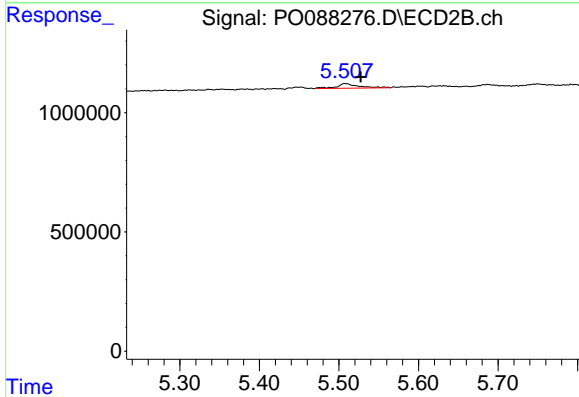
R.T.: 5.085 min  
 Delta R.T.: -0.050 min  
 Response: 831134  
 Conc: 19.85 ng/ml



#25 AR-1248-5

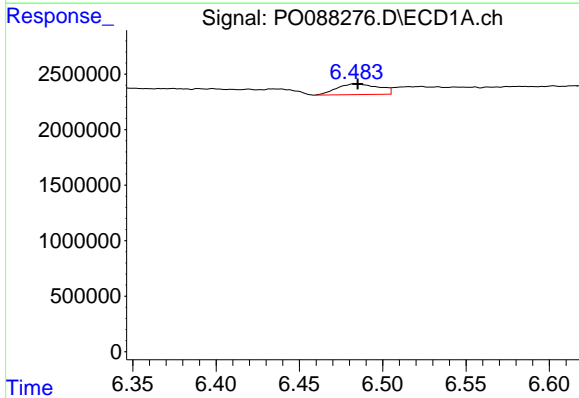
R.T.: 6.533 min  
 Delta R.T.: -0.018 min  
 Response: 317321  
 Conc: 3.53 ng/ml

Instrument :  
 ECD\_O  
 ClientSampleId :



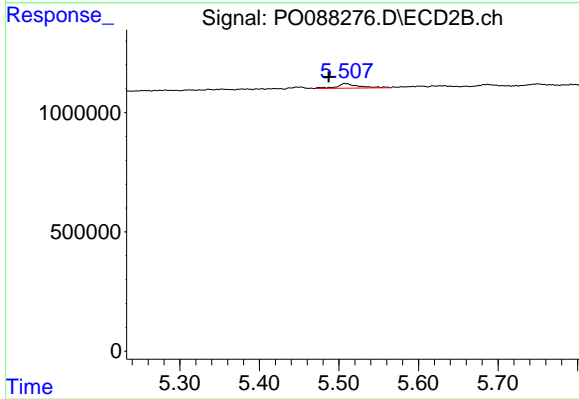
#25 AR-1248-5

R.T.: 5.508 min  
 Delta R.T.: -0.019 min  
 Response: 379576  
 Conc: 10.54 ng/ml



#26 AR-1254-1

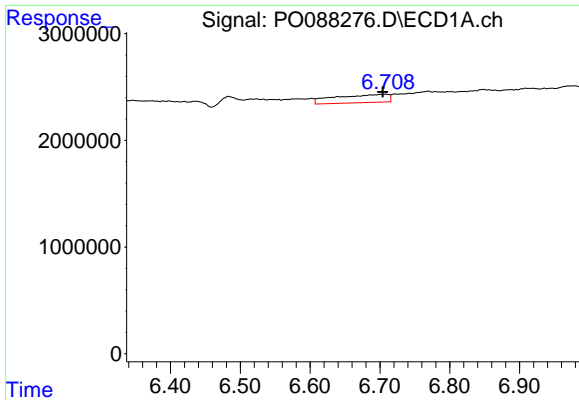
R.T.: 6.483 min  
 Delta R.T.: -0.002 min  
 Response: 1678989  
 Conc: 17.71 ng/ml



#26 AR-1254-1

R.T.: 5.508 min  
 Delta R.T.: 0.021 min  
 Response: 379576  
 Conc: 6.58 ng/ml

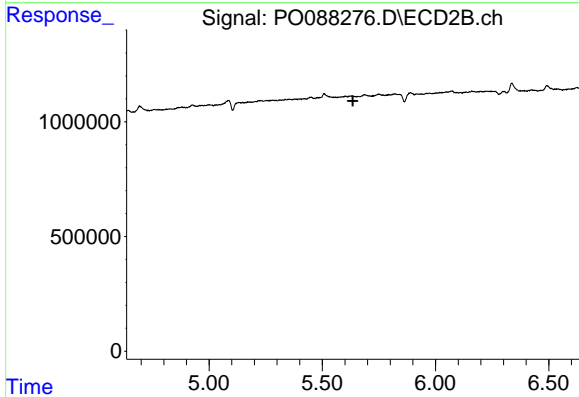




#27 AR-1254-2

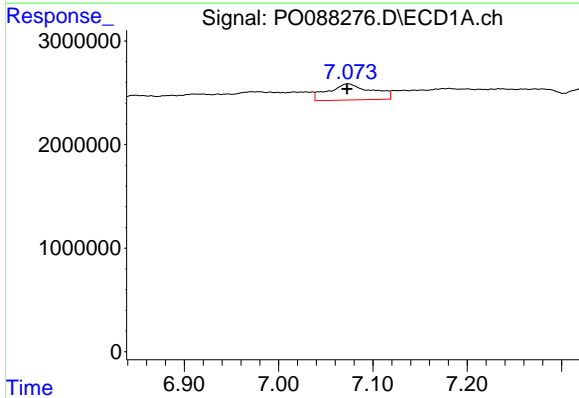
R.T.: 6.708 min  
 Delta R.T.: 0.004 min  
 Response: 4092101  
 Conc: 28.50 ng/ml

Instrument :  
 ECD\_O  
 ClientSampleId :



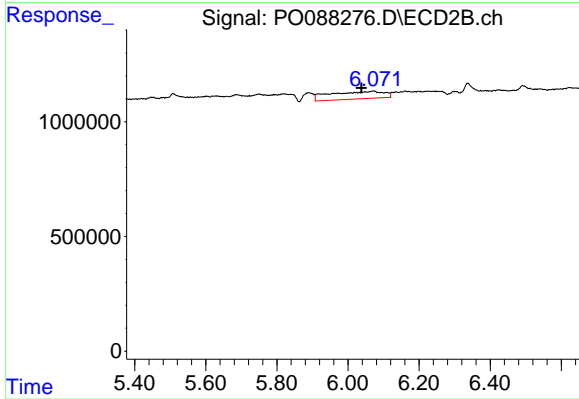
#27 AR-1254-2

R.T.: 0.000 min  
 Exp R.T. : 5.635 min  
 Response: 0  
 Conc: N.D.



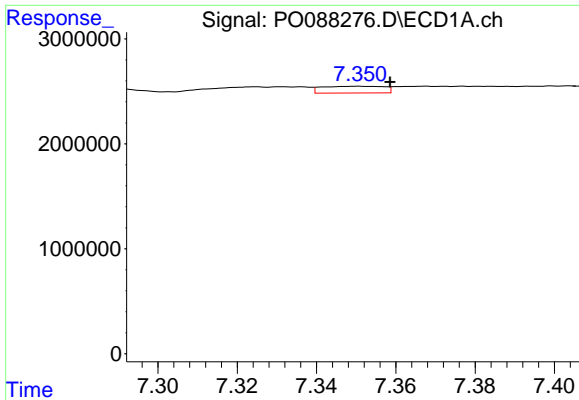
#28 AR-1254-3

R.T.: 7.074 min  
 Delta R.T.: 0.001 min  
 Response: 5008324  
 Conc: 34.19 ng/ml



#28 AR-1254-3

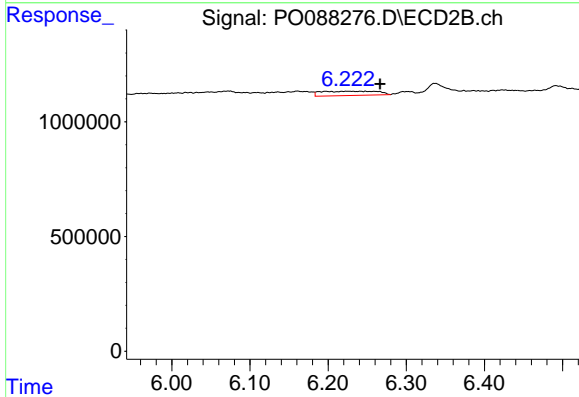
R.T.: 6.072 min  
 Delta R.T.: 0.033 min  
 Response: 3416081  
 Conc: 42.10 ng/ml



#29 AR-1254-4

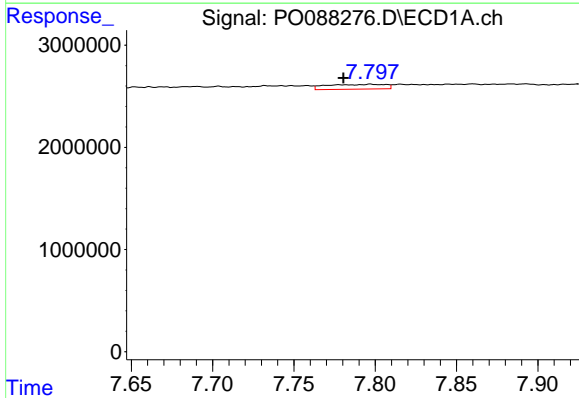
R.T.: 7.350 min  
 Delta R.T.: -0.008 min  
 Response: 698086  
 Conc: 6.45 ng/ml

Instrument :  
 ECD\_O  
 ClientSampleId :



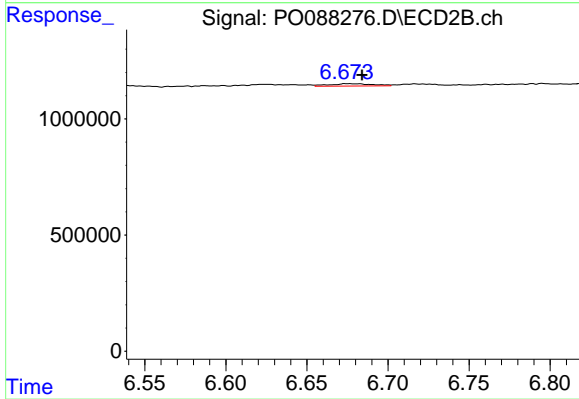
#29 AR-1254-4

R.T.: 6.242 min  
 Delta R.T.: -0.024 min  
 Response: 935170  
 Conc: 18.75 ng/ml



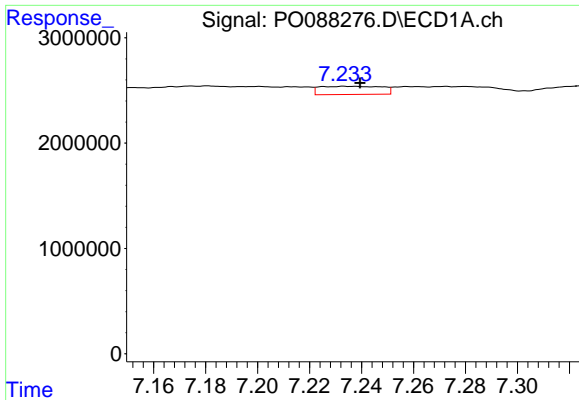
#30 AR-1254-5

R.T.: 7.797 min  
 Delta R.T.: 0.017 min  
 Response: 1169172  
 Conc: 9.71 ng/ml



#30 AR-1254-5

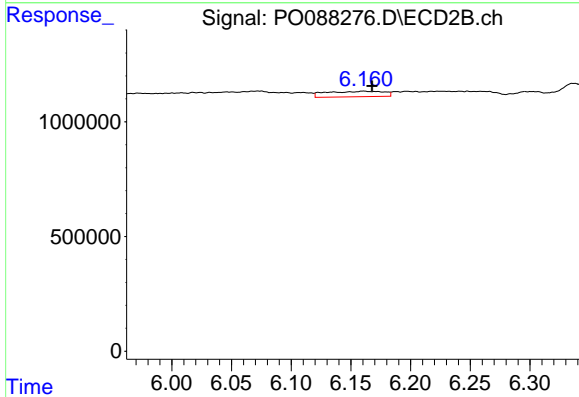
R.T.: 6.677 min  
 Delta R.T.: -0.007 min  
 Response: 186117  
 Conc: 2.46 ng/ml



#31 AR-1260-1

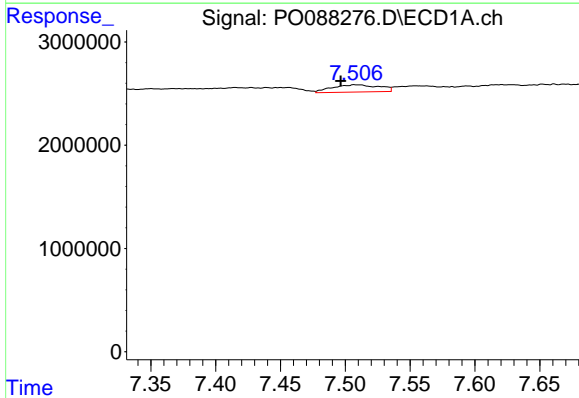
R.T.: 7.234 min  
 Delta R.T.: -0.006 min  
 Response: 1286299  
 Conc: 11.05 ng/ml

Instrument :  
 ECD\_O  
 ClientSampleId :



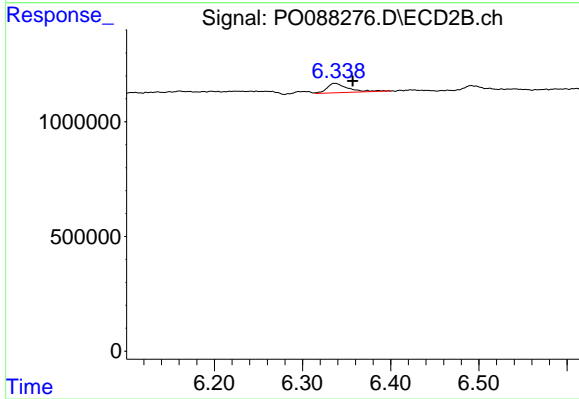
#31 AR-1260-1

R.T.: 6.161 min  
 Delta R.T.: -0.007 min  
 Response: 797811  
 Conc: 14.72 ng/ml



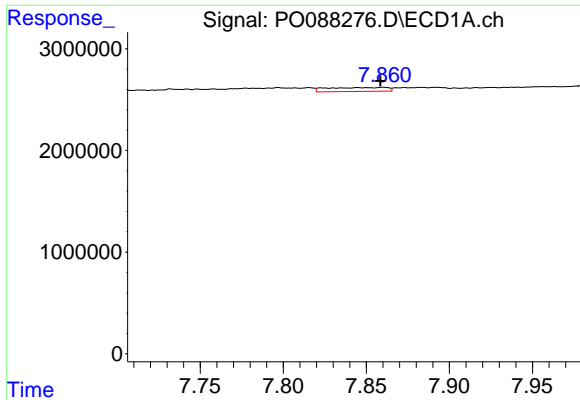
#32 AR-1260-2

R.T.: 7.507 min  
 Delta R.T.: 0.011 min  
 Response: 1777216  
 Conc: 13.15 ng/ml



#32 AR-1260-2

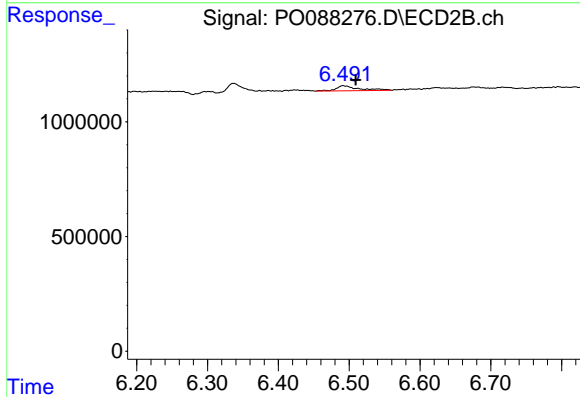
R.T.: 6.337 min  
 Delta R.T.: -0.020 min  
 Response: 700455  
 Conc: 10.79 ng/ml



#33 AR-1260-3

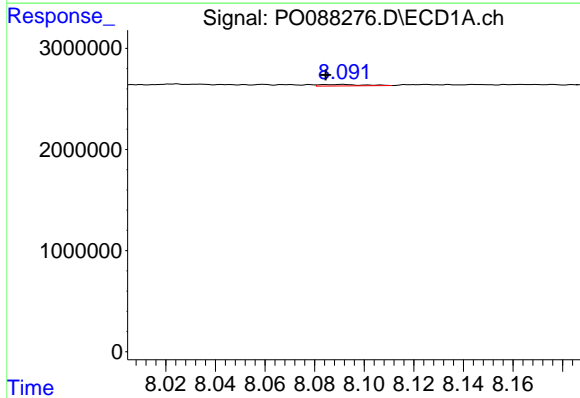
R.T.: 7.860 min  
 Delta R.T.: 0.002 min  
 Response: 974574  
 Conc: 10.65 ng/ml

Instrument :  
 ECD\_O  
 ClientSampleId :



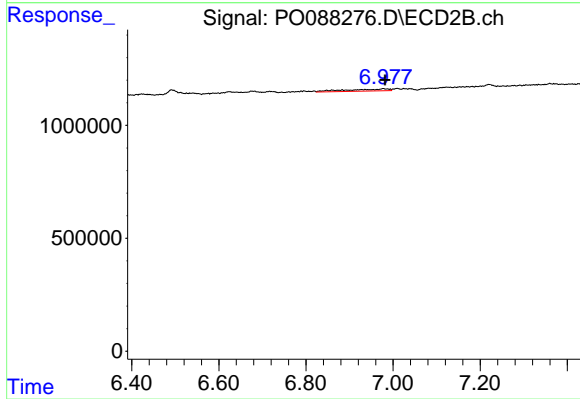
#33 AR-1260-3

R.T.: 6.492 min  
 Delta R.T.: -0.017 min  
 Response: 500024  
 Conc: 8.04 ng/ml



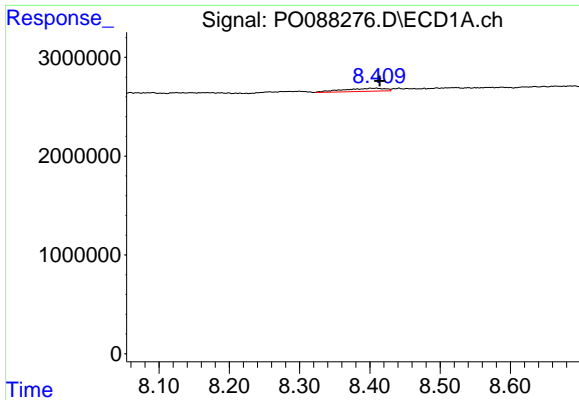
#34 AR-1260-4

R.T.: 8.091 min  
 Delta R.T.: 0.007 min  
 Response: 165807  
 Conc: 1.53 ng/ml



#34 AR-1260-4

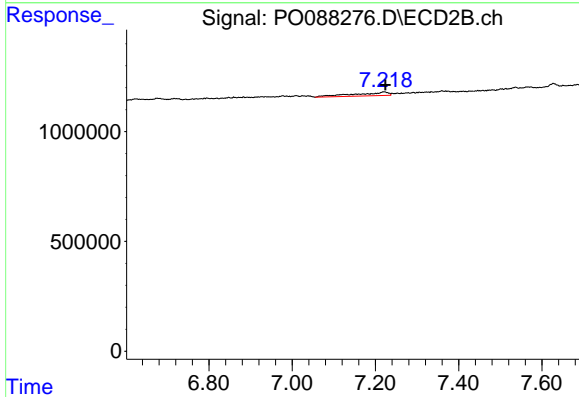
R.T.: 6.977 min  
 Delta R.T.: -0.004 min  
 Response: 635674  
 Conc: 13.44 ng/ml



#35 AR-1260-5

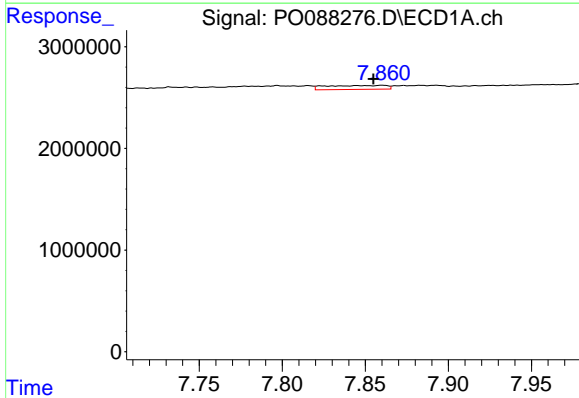
R.T.: 8.409 min  
 Delta R.T.: -0.005 min  
 Response: 1309930  
 Conc: 6.38 ng/ml

Instrument :  
 ECD\_O  
 ClientSampleId :



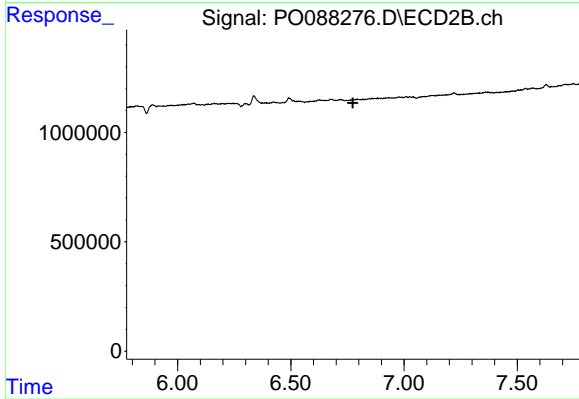
#35 AR-1260-5

R.T.: 7.220 min  
 Delta R.T.: -0.004 min  
 Response: 902441  
 Conc: 7.89 ng/ml



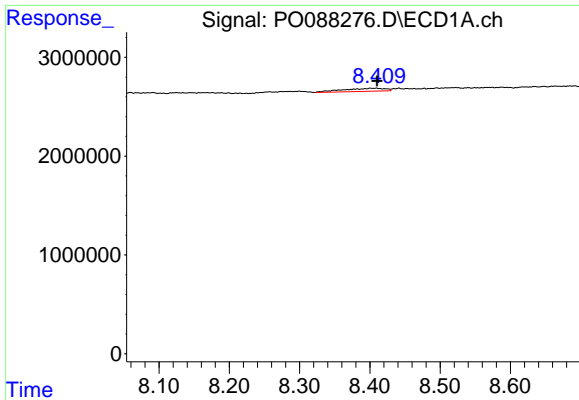
#36 AR-1262-1

R.T.: 7.860 min  
 Delta R.T.: 0.005 min  
 Response: 974574  
 Conc: 7.09 ng/ml



#36 AR-1262-1

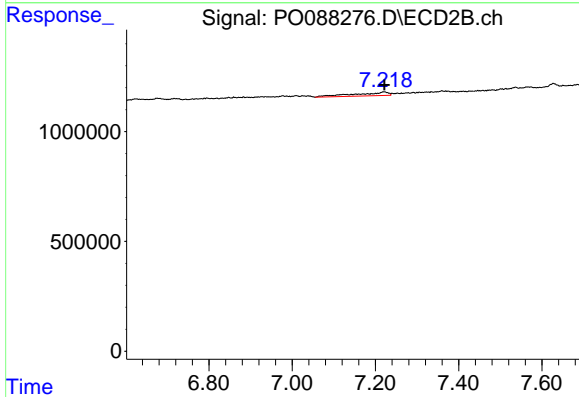
R.T.: 0.000 min  
 Exp R.T.: 6.774 min  
 Response: 0  
 Conc: N.D.



#37 AR-1262-2

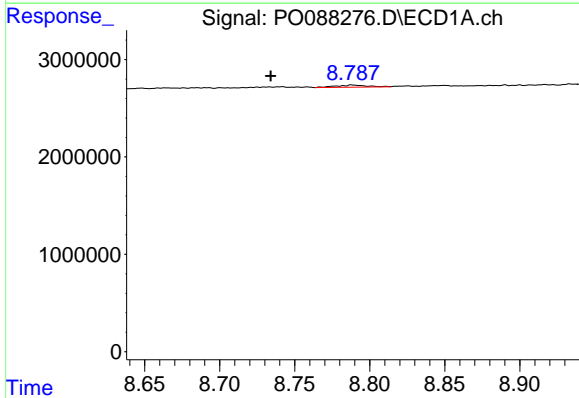
R.T.: 8.409 min  
 Delta R.T.: -0.001 min  
 Response: 1309930  
 Conc: 5.57 ng/ml

Instrument :  
 ECD\_O  
 ClientSampleId :



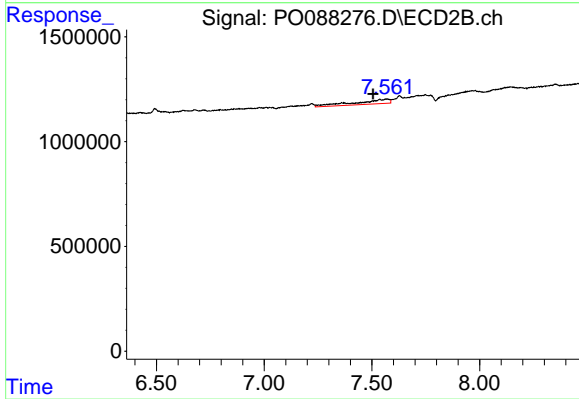
#37 AR-1262-2

R.T.: 7.220 min  
 Delta R.T.: -0.001 min  
 Response: 902441  
 Conc: 6.72 ng/ml



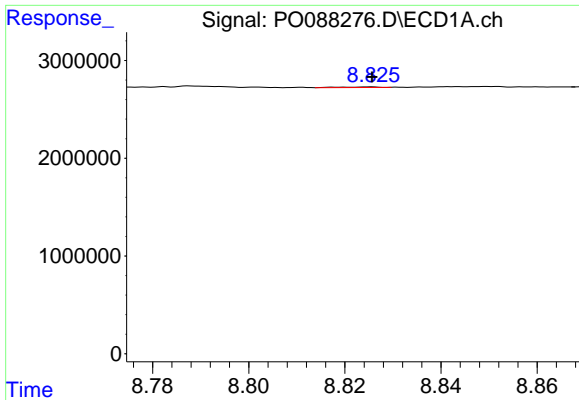
#38 AR-1262-3

R.T.: 8.788 min  
 Delta R.T.: 0.054 min  
 Response: 312019  
 Conc: 1.88 ng/ml



#38 AR-1262-3

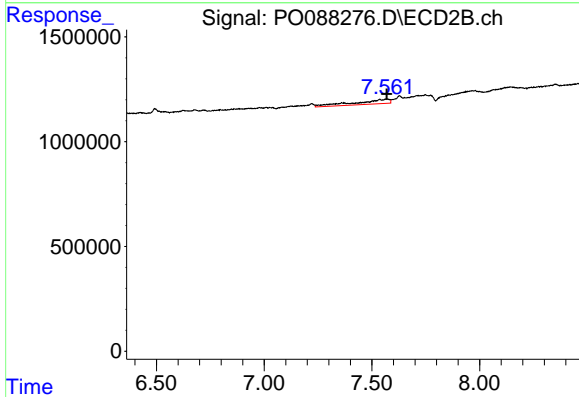
R.T.: 7.566 min  
 Delta R.T.: 0.060 min  
 Response: 2360373  
 Conc: 43.28 ng/ml



#39 AR-1262-4

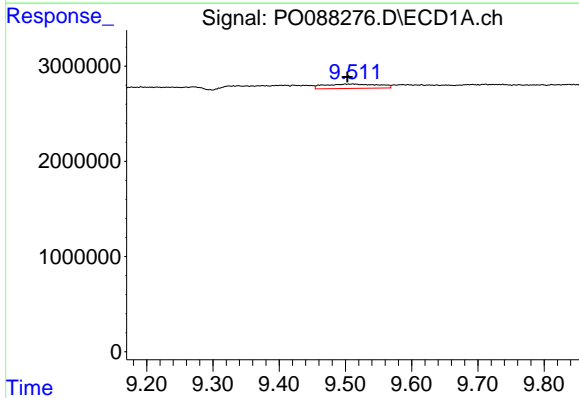
R.T.: 8.825 min  
 Delta R.T.: 0.000 min  
 Response: 40071  
 Conc: 0.48 ng/ml

Instrument :  
 ECD\_O  
 ClientSampleId :



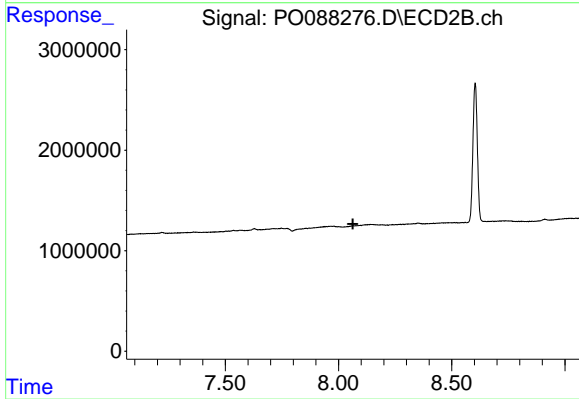
#39 AR-1262-4

R.T.: 7.566 min  
 Delta R.T.: -0.003 min  
 Response: 2360373  
 Conc: 23.33 ng/ml



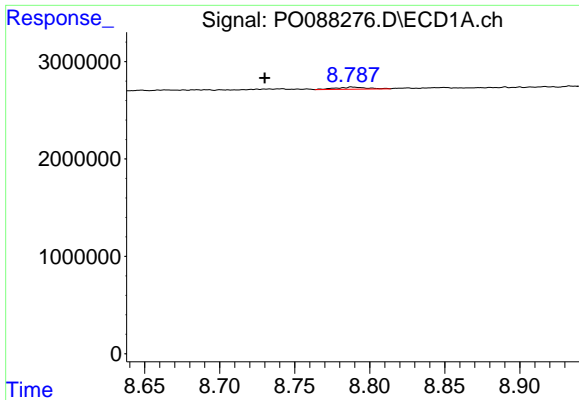
#40 AR-1262-5

R.T.: 9.511 min  
 Delta R.T.: 0.008 min  
 Response: 2583961  
 Conc: 28.99 ng/ml



#40 AR-1262-5

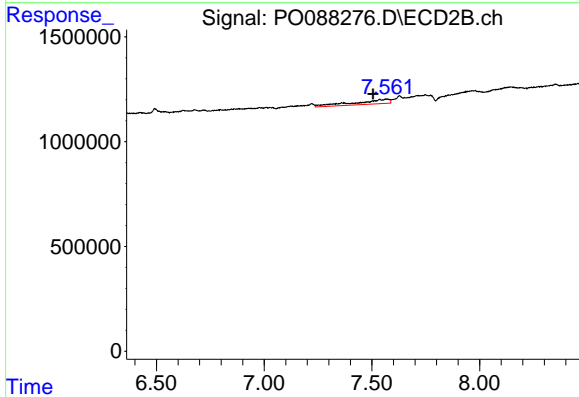
R.T.: 0.000 min  
 Exp R.T. : 8.064 min  
 Response: 0  
 Conc: N.D.



#41 AR-1268-1

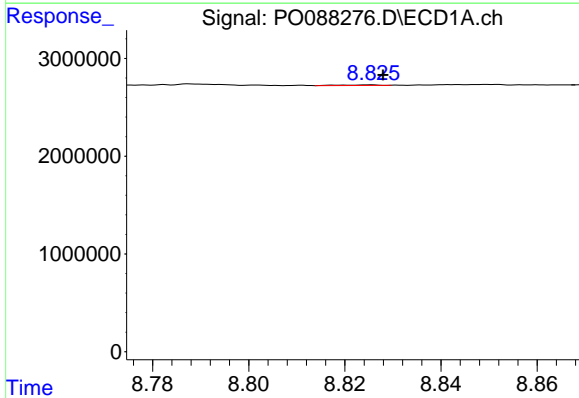
R.T.: 8.788 min  
 Delta R.T.: 0.058 min  
 Response: 312019  
 Conc: 1.10 ng/ml

Instrument :  
 ECD\_O  
 ClientSampleId :



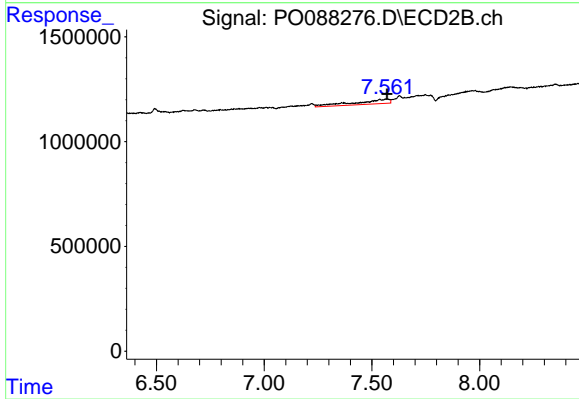
#41 AR-1268-1

R.T.: 7.566 min  
 Delta R.T.: 0.061 min  
 Response: 2360373  
 Conc: 14.90 ng/ml



#42 AR-1268-2

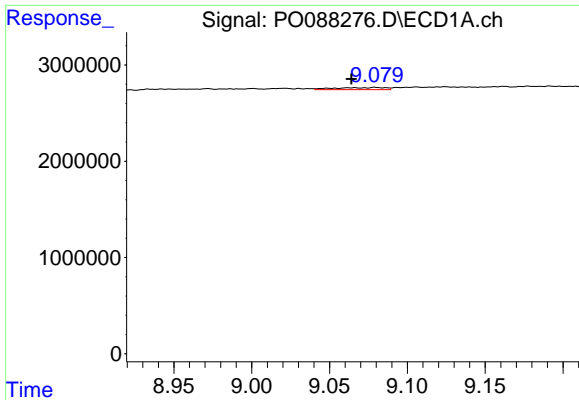
R.T.: 8.825 min  
 Delta R.T.: -0.003 min  
 Response: 40071  
 Conc: 0.15 ng/ml



#42 AR-1268-2

R.T.: 7.566 min  
 Delta R.T.: -0.004 min  
 Response: 2360373  
 Conc: 16.41 ng/ml

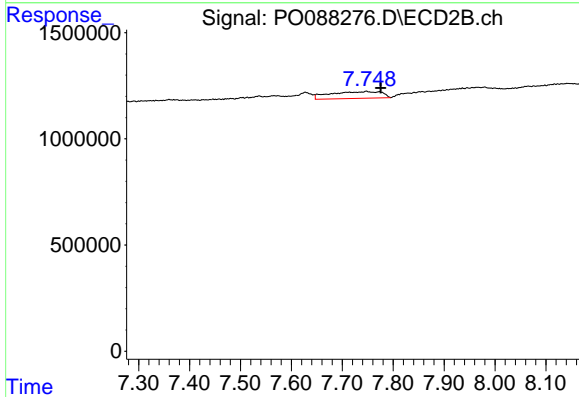




#43 AR-1268-3

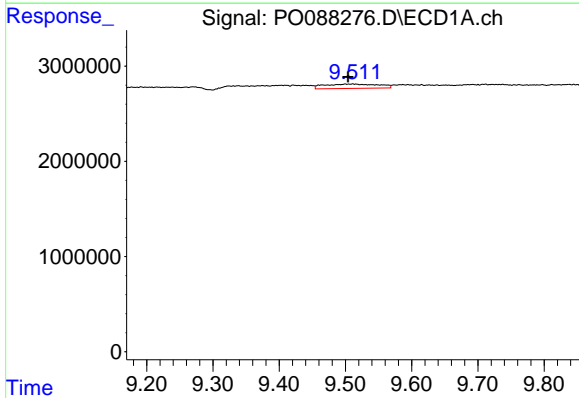
R.T.: 9.079 min  
 Delta R.T.: 0.015 min  
 Response: 495704  
 Conc: 2.21 ng/ml

Instrument :  
 ECD\_O  
 ClientSampleId :



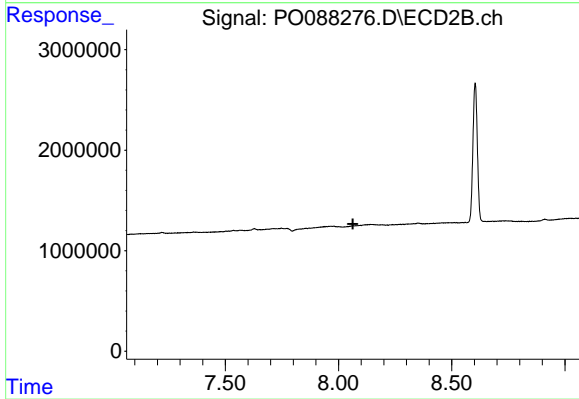
#43 AR-1268-3

R.T.: 7.748 min  
 Delta R.T.: -0.028 min  
 Response: 2220478  
 Conc: 17.83 ng/ml



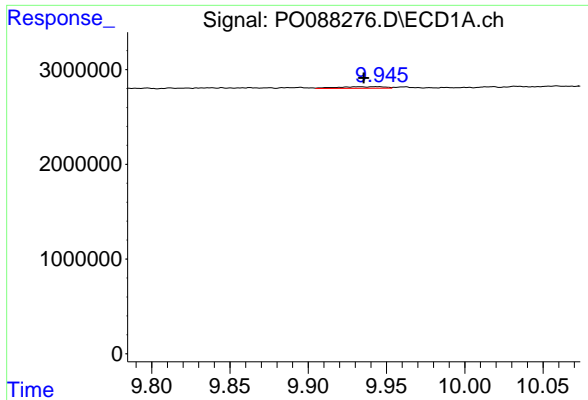
#44 AR-1268-4

R.T.: 9.511 min  
 Delta R.T.: 0.007 min  
 Response: 2583961  
 Conc: 26.35 ng/ml



#44 AR-1268-4

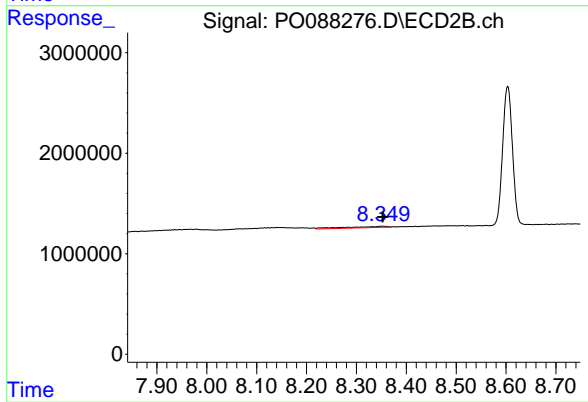
R.T.: 0.000 min  
 Exp R.T. : 8.063 min  
 Response: 0  
 Conc: N.D.



#45 AR-1268-5

R.T.: 9.944 min  
 Delta R.T.: 0.009 min  
 Response: 368358  
 Conc: 0.51 ng/ml

Instrument :  
 ECD\_O  
 ClientSampleId :



#45 AR-1268-5

R.T.: 8.351 min  
 Delta R.T.: -0.002 min  
 Response: 701000  
 Conc: 1.81 ng/ml